

Data Path : Z:\voasrv\HPCHEM1\MSVOA_Y\Data\VY032521\
 Data File : VY004200.D
 Acq On : 25 Mar 2021 13:57
 Operator : SY/MD
 Sample : M1817-02RE
 Misc : 7.69g/5mL/MSVOA_Y/SOIL
 ALS Vial : 8 Sample Multiplier: 1

Instrument :
 MSVOA_Y
 ClientSampleId :
 PHC-326FB-003RE

Quant Time: Mar 26 01:13:35 2021
 Quant Method : Z:\voasrv\HPCHEM1\MSVOA_Y\methods\82Y030821S.M
 Quant Title : SW846 8260
 QLast Update : Mon Mar 08 12:28:55 2021
 Response via : Initial Calibration

Compound	R.T.	QIon	Response	Conc	Units	Dev(Min)
Internal Standards						
1) Pentafluorobenzene	7.746	168	376	50.00	ug/l	-0.05
34) 1,4-Difluorobenzene	8.667	114	22	50.00	ug/l	-0.03
63) Chlorobenzene-d5	11.660	117	34528	50.00	ug/l	0.16
72) 1,4-Dichlorobenzene-d4	13.459	152	10200	50.00	ug/l	0.03
System Monitoring Compounds						
33) 1,2-Dichloroethane-d4	8.143	65	100	26.95	ug/l	-0.01
Spiked Amount	50.000	Range	50 - 163	Recovery	=	53.90%
35) Dibromofluoromethane	7.734	113	272	2192.45	ug/l	0.00
Spiked Amount	50.000	Range	54 - 147	Recovery	=	4384.90%#
50) Toluene-d8	10.155	98	59	121.31	ug/l	-0.03
Spiked Amount	50.000	Range	49 - 140	Recovery	=	242.62%#
62) 4-Bromofluorobenzene	12.563	95	13597	75694.33	ug/l	0.08
Spiked Amount	50.000	Range	25 - 144	Recovery	=	151388.66%#
Target Compounds						
						Qvalue
5) Bromomethane	2.827	94	19	6.54	ug/l #	1
7) Trichlorofluoromethane	3.137	101	1000	165.58	ug/l	95
8) Diethyl Ether	3.503	74	70	36.16	ug/l #	1
10) Methyl Iodide	4.204	142	1125	325.88	ug/l #	1
11) Tert butyl alcohol	4.912	59	40	119.23	ug/l #	1
12) 1,1-Dichloroethene	3.851	96	98	29.64	ug/l #	1
13) Acrolein	3.723	56	134	402.66	ug/l #	15
14) Allyl chloride	4.479	41	131	23.96	ug/l #	54
15) Acrylonitrile	5.137	53	242	251.53	ug/l #	83
16) Acetone	3.985	43	240	267.97	ug/l #	82
17) Carbon Disulfide	4.198	76	488	50.20	ug/l #	1
18) Methyl Acetate	4.479	43	156	70.50	ug/l #	1
19) Methyl tert-butyl Ether	5.222	73	170	18.06	ug/l #	54
20) Methylene Chloride	4.723	84	79	18.80	ug/l #	12
21) trans-1,2-Dichloroethene	5.235	96	155	41.73	ug/l #	1
22) Diisopropyl ether	6.082	45	283	24.52	ug/l #	42
23) Vinyl Acetate	6.045	43	1021	134.38	ug/l #	74
24) 1,1-Dichloroethane	5.978	63	187	29.18	ug/l #	82
25) 2-Butanone	6.954	43	259	200.60	ug/l #	81
26) 2,2-Dichloropropane	6.923	77	405	66.17	ug/l	91
27) cis-1,2-Dichloroethene	6.990	96	248	58.65	ug/l	6
28) Bromochloromethane	7.326	49	93	33.23	ug/l #	1
29) Tetrahydrofuran	7.320	42	225	268.26	ug/l #	54
30) Chloroform	7.539	83	175	26.36	ug/l	92
31) Cyclohexane	7.746	56	113	17.36	ug/l #	64
32) 1,1,1-Trichloroethane	7.692	97	24	3.90	ug/l #	1
36) 1,1-Dichloropropene	7.893	75	89	460.48	ug/l #	1
37) Ethyl Acetate	7.094	43	379	3640.00	ug/l #	14
38) Carbon Tetrachloride	7.887	117	57	277.97	ug/l #	61
39) Methylcyclohexane	9.149	83	162	648.88	ug/l #	35
40) Benzene	8.149	78	522	958.75	ug/l #	1
41) Methacrylonitrile	7.332	41	49	759.55	ug/l #	1
42) 1,2-Dichloroethane	8.356	62	1973	11855.98	ug/l	85
43) Isopropyl Acetate	8.265	43	271	1297.12	ug/l #	1
44) Trichloroethene	8.899	130	79	501.03	ug/l	6
45) 1,2-Dichloropropane	9.283	63	18241	134190.36	ug/l #	45

Data Path : Z:\voasrv\HPCHEM1\MSVOA_Y\Data\VY032521\
 Data File : VY004200.D
 Acq On : 25 Mar 2021 13:57
 Operator : SY/MD
 Sample : M1817-02RE
 Misc : 7.69g/5mL/MSVOA_Y/SOIL
 ALS Vial : 8 Sample Multiplier: 1

Instrument :
 MSVOA_Y
 ClientSampleId :
 PHC-326FB-003RE

Quant Time: Mar 26 01:13:35 2021
 Quant Method : Z:\voasrv\HPCHEM1\MSVOA_Y\methods\82Y030821S.M
 Quant Title : SW846 8260
 QLast Update : Mon Mar 08 12:28:55 2021
 Response via : Initial Calibration

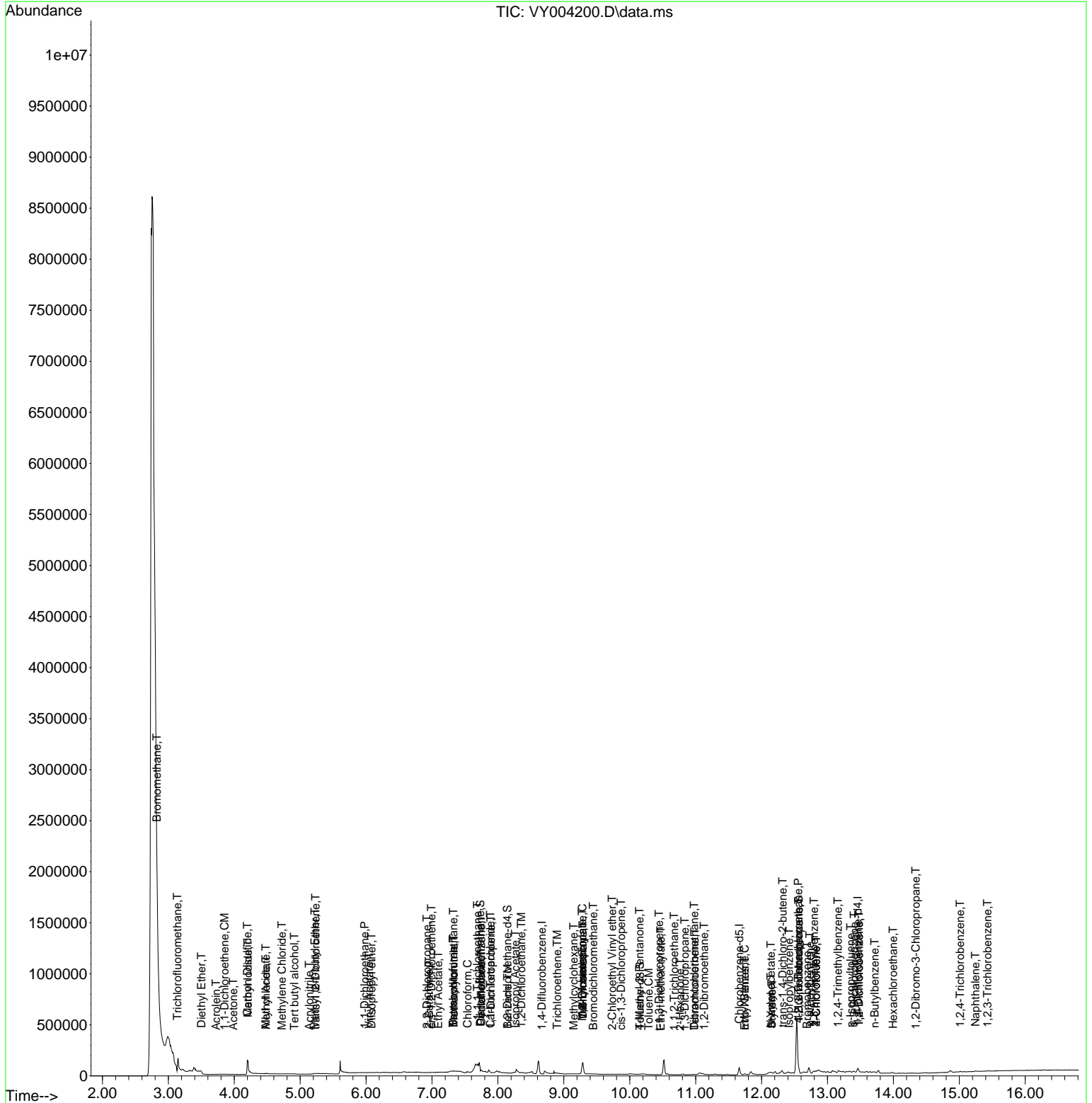
Compound	R.T.	QIon	Response	Conc	Units	Dev(Min)
46) Dibromomethane	9.289	93	1995	25669.77	ug/l #	1
47) Bromodichloromethane	9.447	83	117	603.04	ug/l #	24
48) Methyl methacrylate	9.277	41	171	1722.70	ug/l #	1
49) 1,4-Dioxane	9.283	88	15174	15337540.99	ug/l #	23
51) 4-Methyl-2-Pentanone	10.148	43	249	2353.49	ug/l	96
52) Toluene	10.289	92	66	187.18	ug/l	99
53) t-1,3-Dichloropropene	10.447	75	90	439.71	ug/l #	1
54) cis-1,3-Dichloropropene	9.868	75	177	771.75	ug/l #	36
55) 1,1,2-Trichloroethane	10.673	97	398	3641.63	ug/l #	15
56) Ethyl methacrylate	10.472	69	97	634.91	ug/l #	31
57) 1,3-Dichloropropane	10.837	76	46	245.78	ug/l #	1
58) 2-Chloroethyl Vinyl ether	9.734	63	482	8681.46	ug/l #	47
59) 2-Hexanone	10.764	43	238	3201.78	ug/l	81
60) Dibromochloromethane	10.978	129	559	4073.85	ug/l #	10
61) 1,2-Dibromoethane	11.130	107	23	216.11	ug/l #	2
64) Tetrachloroethene	10.984	164	465	1.61	ug/l #	71
67) Ethyl Benzene	11.746	91	5927	4.88	ug/l	100
68) m/p-Xylenes	11.746	106	1677	3.62	ug/l #	5
69) o-Xylene	12.142	106	2019	4.61	ug/l	93
70) Styrene	12.154	104	1910	2.55	ug/l #	77
73) Isopropylbenzene	12.416	105	1888	2.66	ug/l	99
74) N-amyl acetate	12.142	43	997	4.91	ug/l #	55
75) 1,1,2,2-Tetrachloroethane	12.557	83	339	2.75	ug/l #	26
76) 1,2,3-Trichloropropane	12.563	75	7194	73.56	ug/l #	100
77) Bromobenzene	12.691	156	654	3.99	ug/l #	30
78) n-propylbenzene	12.733	91	5594	6.70	ug/l	99
79) 2-Chlorotoluene	12.825	91	4589	9.79	ug/l	92
80) 1,3,5-Trimethylbenzene	12.794	105	2903	4.83	ug/l	91
81) trans-1,4-Dichloro-2-b...	12.319	75	403	8.13	ug/l #	33
82) 4-Chlorotoluene	12.825	91	4589	9.25	ug/l	92
84) 1,2,4-Trimethylbenzene	13.160	105	7717	12.82	ug/l	86
86) p-Isopropyltoluene	13.349	119	1341	2.03	ug/l	79
87) 1,3-Dichlorobenzene	13.404	146	2044	6.47	ug/l #	80
88) 1,4-Dichlorobenzene	13.477	146	2321	7.36	ug/l #	76
89) n-Butylbenzene	13.715	91	4038	6.42	ug/l #	78
90) Hexachloroethane	13.995	117	618	5.20	ug/l #	4
91) 1,2-Dichlorobenzene	13.477	146	2321	8.28	ug/l	84
92) 1,2-Dibromo-3-Chloropr...	14.337	75	194	8.34	ug/l #	2
93) 1,2,4-Trichlorobenzene	15.013	180	1331	7.00	ug/l #	78
95) Naphthalene	15.245	128	3683	9.77	ug/l #	95
96) 1,2,3-Trichlorobenzene	15.428	180	820	5.13	ug/l	86

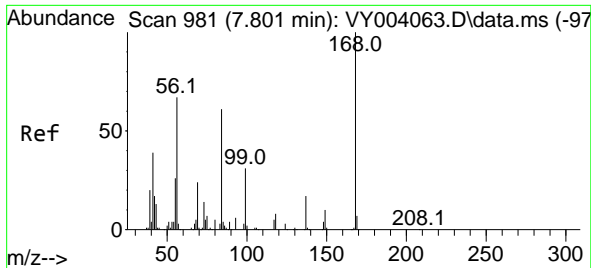
(#) = qualifier out of range (m) = manual integration (+) = signals summed

Data Path : Z:\voasrv\HPCHEM1\MSVOA_Y\Data\VY032521\
 Data File : VY004200.D
 Acq On : 25 Mar 2021 13:57
 Operator : SY/MD
 Sample : M1817-02RE
 Misc : 7.69g/5mL/MSVOA_Y/SOIL
 ALS Vial : 8 Sample Multiplier: 1

Instrument :
 MSVOA_Y
 Client Sampled :
 PHC-326FB-003RE

Quant Time: Mar 26 01:13:35 2021
 Quant Method : Z:\voasrv\HPCHEM1\MSVOA_Y\methods\82Y030821S.M
 Quant Title : SW846 8260
 QLast Update : Mon Mar 08 12:28:55 2021
 Response via : Initial Calibration

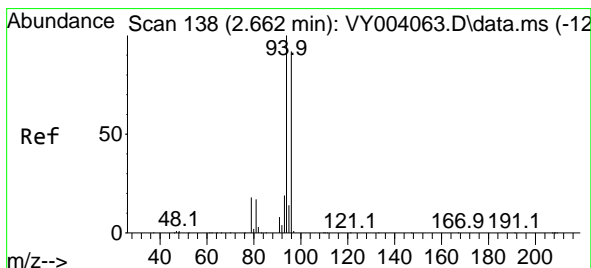
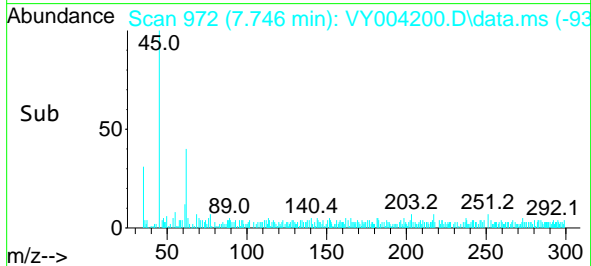
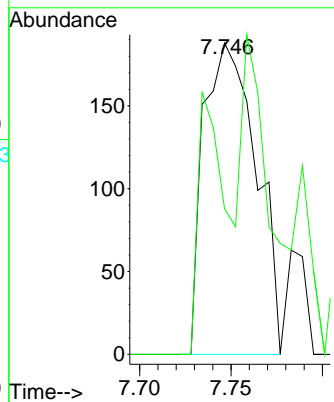
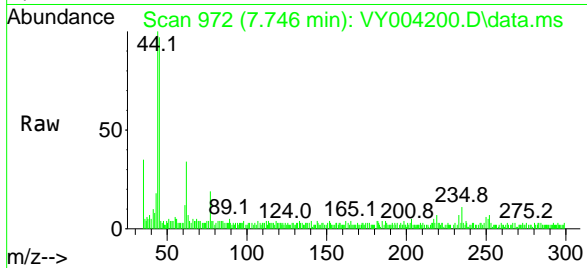




#1
 Pentafluorobenzene
 Concen: 50.00 ug/l
 RT: 7.746 min Scan# 972
 Delta R.T. -0.055 min
 Lab File: VY004200.D
 Acq: 25 Mar 2021 13:57

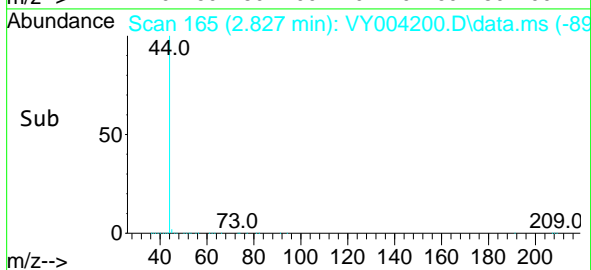
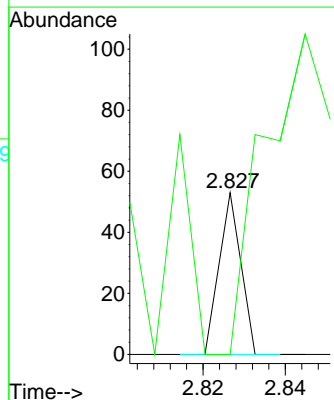
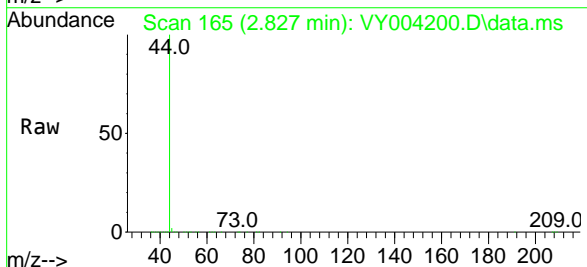
Instrument :
 MSVOA_Y
 ClientSampled :
 PHC-326FB-003RE

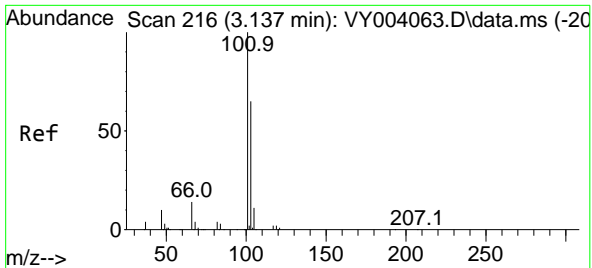
Tgt Ion:168 Resp: 376
 Ion Ratio Lower Upper
 168 100
 99 46.8 41.2 61.8



#5
 Bromomethane
 Concen: 6.54 ug/l
 RT: 2.827 min Scan# 165
 Delta R.T. 0.165 min
 Lab File: VY004200.D
 Acq: 25 Mar 2021 13:57

Tgt Ion: 94 Resp: 19
 Ion Ratio Lower Upper
 94 100
 96 0.0 77.4 116.2#

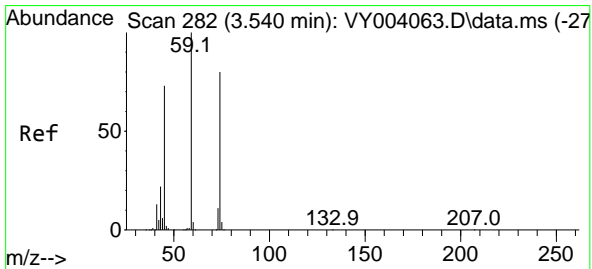
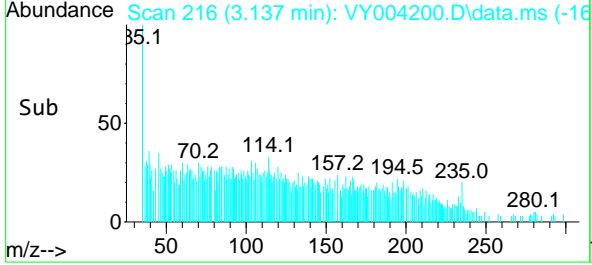
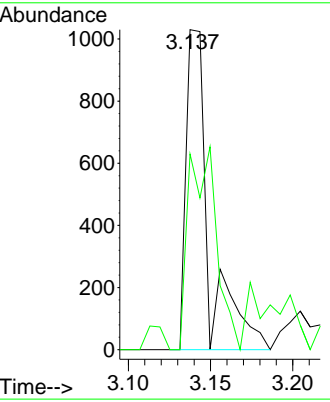
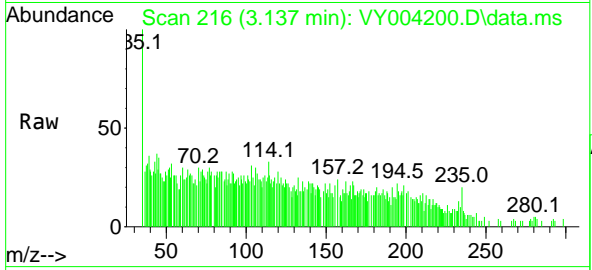




#7
 Trichlorofluoromethane
 Concen: 165.58 ug/l
 RT: 3.137 min Scan# 216
 Delta R.T. 0.000 min
 Lab File: VY004200.D
 Acq: 25 Mar 2021 13:57

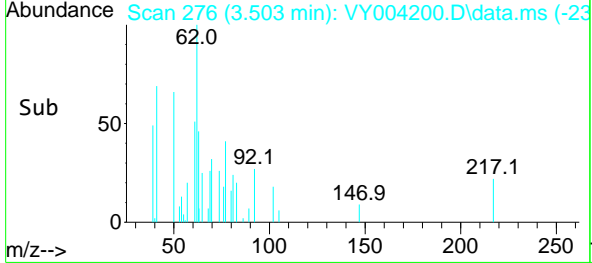
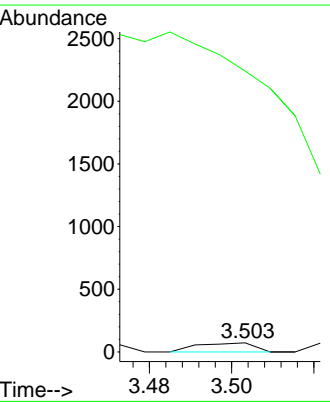
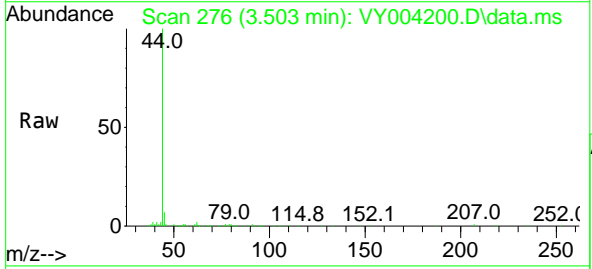
Instrument :
 MSVOA_Y
 ClientSampled :
 PHC-326FB-003RE

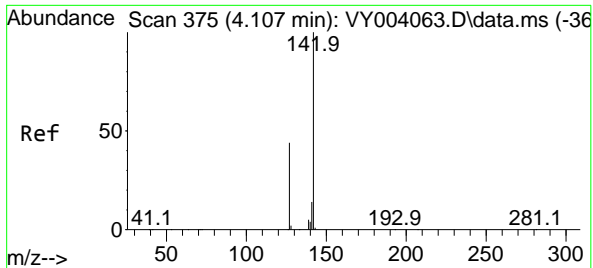
Tgt Ion:101 Resp: 1000
 Ion Ratio Lower Upper
 101 100
 103 61.2 52.2 78.2



#8
 Diethyl Ether
 Concen: 36.16 ug/l
 RT: 3.503 min Scan# 276
 Delta R.T. -0.037 min
 Lab File: VY004200.D
 Acq: 25 Mar 2021 13:57

Tgt Ion: 74 Resp: 70
 Ion Ratio Lower Upper
 74 100
 45 0.0 52.6 157.8#

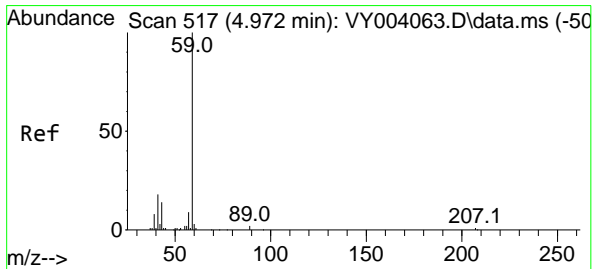
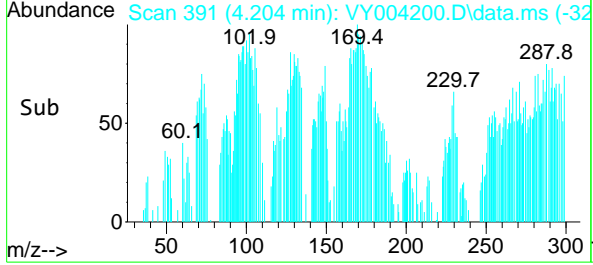
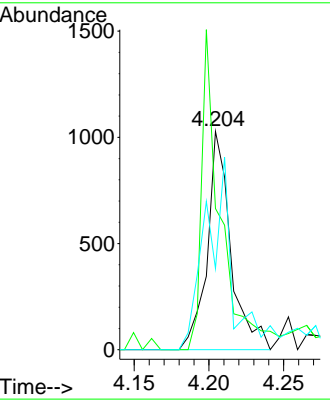
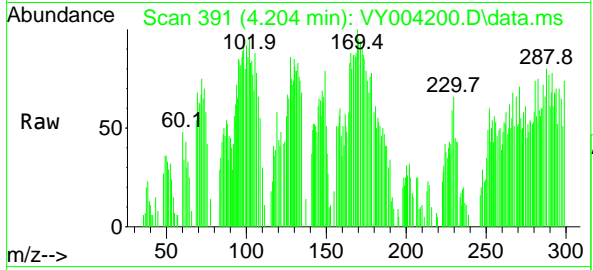




#10
Methyl Iodide
Concen: 325.88 ug/l
RT: 4.204 min Scan# 391
Delta R.T. 0.097 min
Lab File: VY004200.D
Acq: 25 Mar 2021 13:57

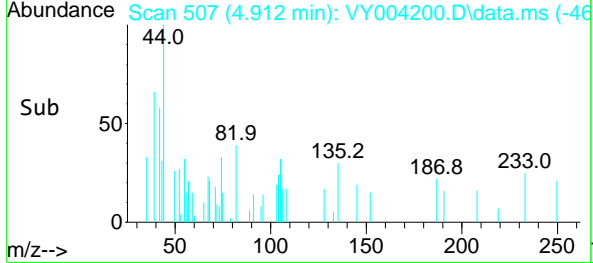
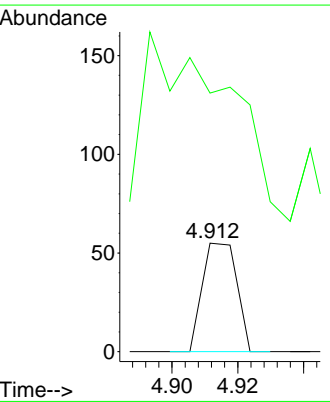
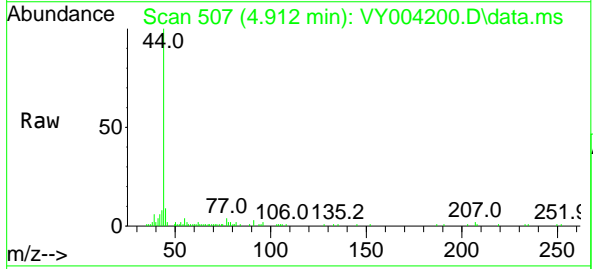
Instrument : MSVOA_Y
Client Sampled : PHC-326FB-003RE

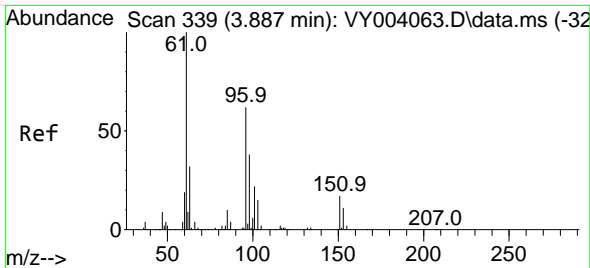
Tgt Ion	Resp	Lower	Upper
142	1125		
100	100		
127	117.4	35.4	53.0#
141	99.6	11.5	17.3#



#11
Tert butyl alcohol
Concen: 119.23 ug/l
RT: 4.912 min Scan# 507
Delta R.T. -0.060 min
Lab File: VY004200.D
Acq: 25 Mar 2021 13:57

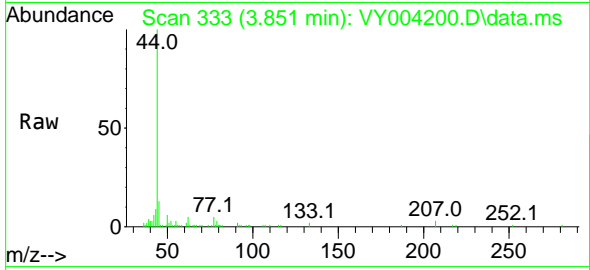
Tgt Ion	Resp	Lower	Upper
59	40		
100	100		
57	407.5	6.9	10.3#



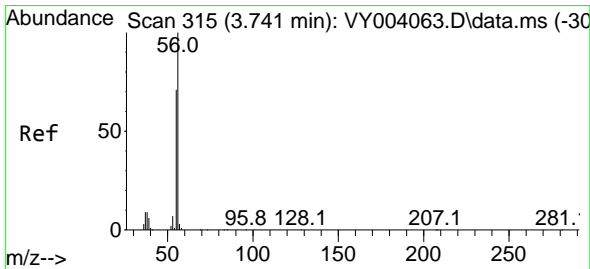
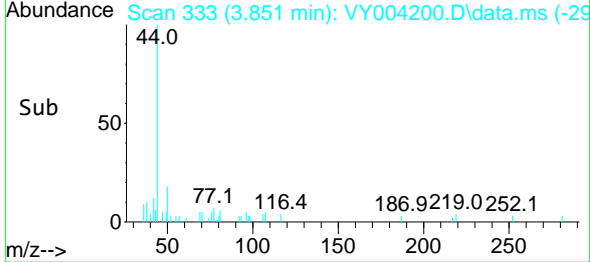
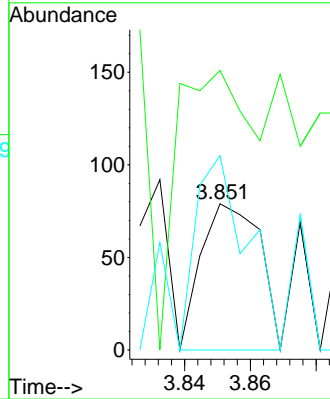


#12
 1,1-Dichloroethene
 Concen: 29.64 ug/l
 RT: 3.851 min Scan# 333
 Delta R.T. -0.036 min
 Lab File: VY004200.D
 Acq: 25 Mar 2021 13:57

Instrument :
 MSVOA_Y
 ClientSampleId :
 PHC-326FB-003RE

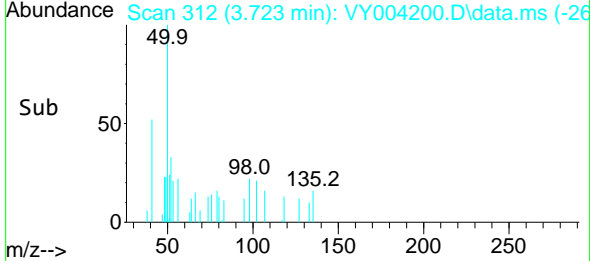
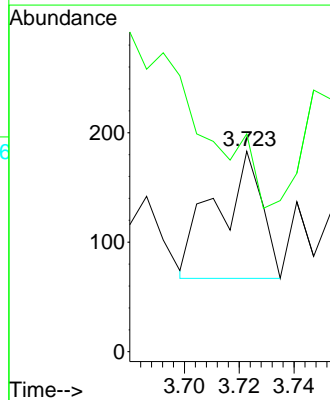
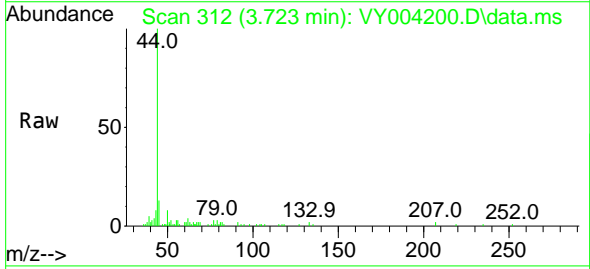


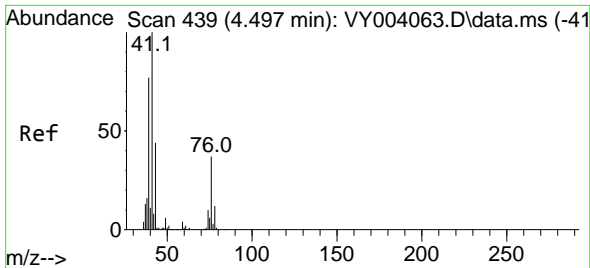
Tgt Ion: 96 Resp: 98
 Ion Ratio Lower Upper
 96 100
 61 8.9 130.7 196.1#
 98 132.9 48.9 73.3#



#13
 Acrolein
 Concen: 402.66 ug/l
 RT: 3.723 min Scan# 312
 Delta R.T. -0.018 min
 Lab File: VY004200.D
 Acq: 25 Mar 2021 13:57

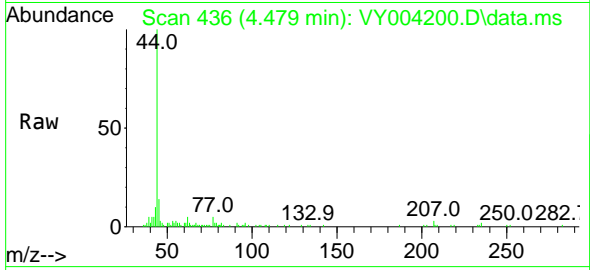
Tgt Ion: 56 Resp: 134
 Ion Ratio Lower Upper
 56 100
 55 0.0 55.4 83.0#





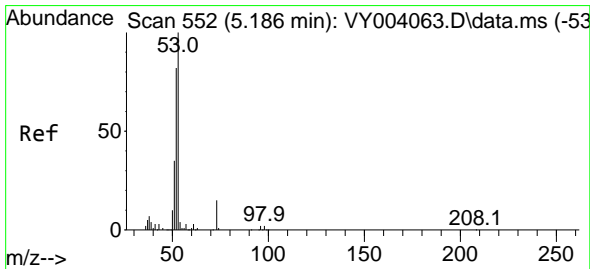
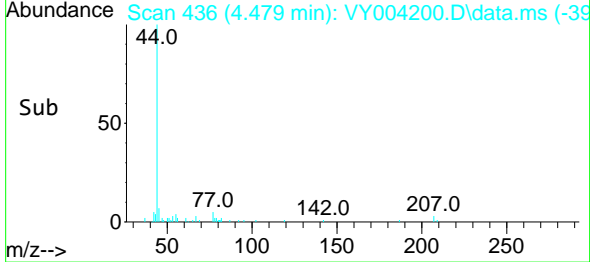
#14
 Allyl chloride
 Concen: 23.96 ug/l
 RT: 4.479 min Scan# 436
 Delta R.T. -0.018 min
 Lab File: VY004200.D
 Acq: 25 Mar 2021 13:57

Instrument :
 MSVOA_Y
 ClientSampled :
 PHC-326FB-003RE

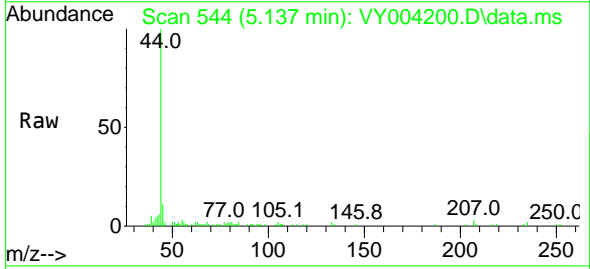


Tgt Ion: 41 Resp: 131

Ion	Ratio	Lower	Upper
41	100		
39	116.8	54.0	81.0#
76	41.2	26.1	39.1#

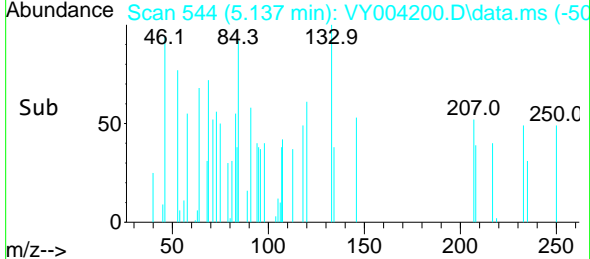
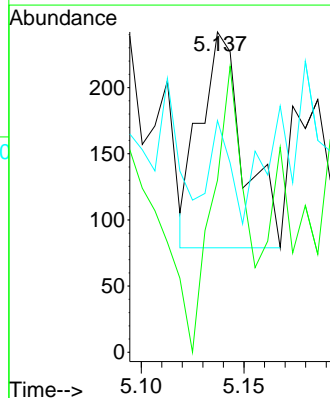


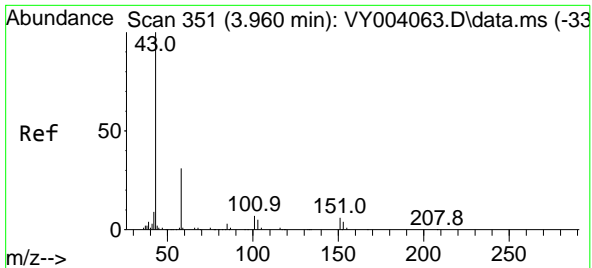
#15
 Acrylonitrile
 Concen: 251.53 ug/l
 RT: 5.137 min Scan# 544
 Delta R.T. -0.049 min
 Lab File: VY004200.D
 Acq: 25 Mar 2021 13:57



Tgt Ion: 53 Resp: 242

Ion	Ratio	Lower	Upper
53	100		
52	94.6	66.2	99.4
51	22.3	29.5	44.3#

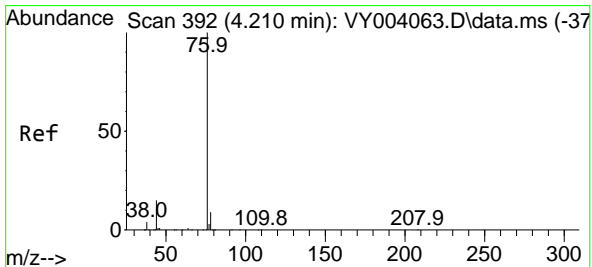
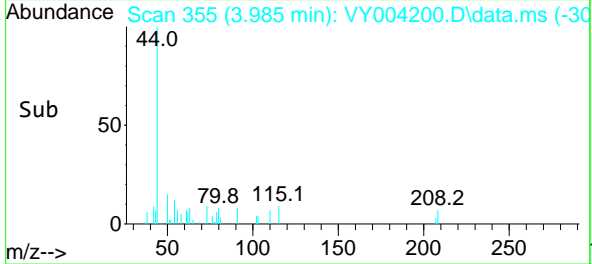
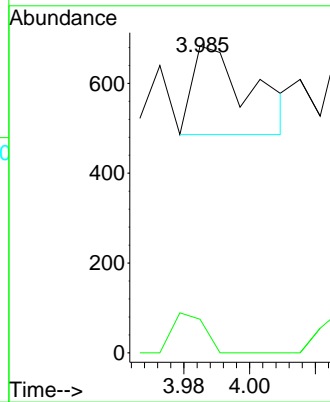
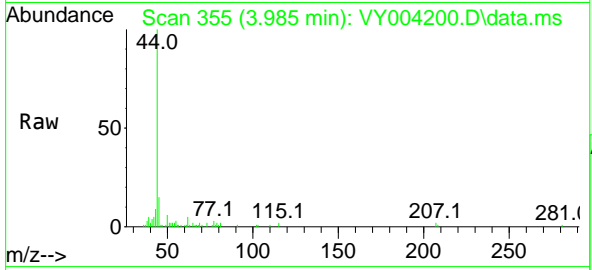




#16
 Acetone
 Concen: 267.97 ug/l
 RT: 3.985 min Scan# 355
 Delta R.T. 0.025 min
 Lab File: VY004200.D
 Acq: 25 Mar 2021 13:57

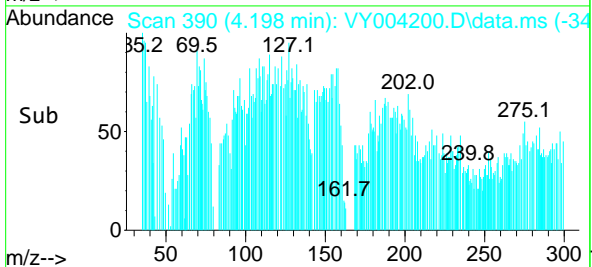
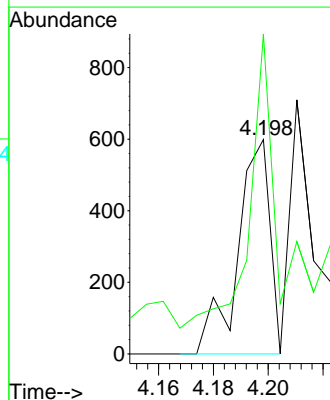
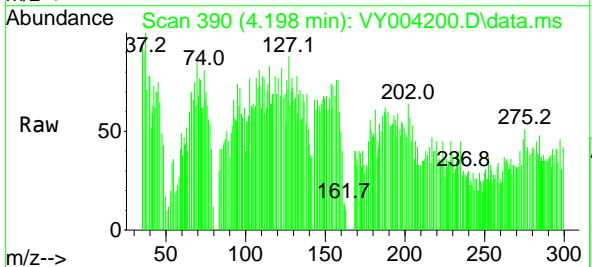
Instrument :
 MSVOA_Y
 ClientSampleId :
 PHC-326FB-003RE

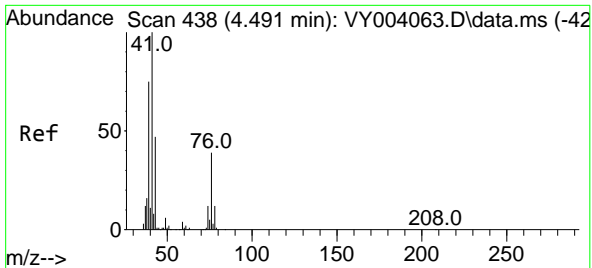
Tgt Ion: 43 Resp: 240
 Ion Ratio Lower Upper
 43 100
 58 38.1 22.6 34.0#



#17
 Carbon Disulfide
 Concen: 50.20 ug/l
 RT: 4.198 min Scan# 390
 Delta R.T. -0.012 min
 Lab File: VY004200.D
 Acq: 25 Mar 2021 13:57

Tgt Ion: 76 Resp: 488
 Ion Ratio Lower Upper
 76 100
 78 72.7 6.8 10.2#



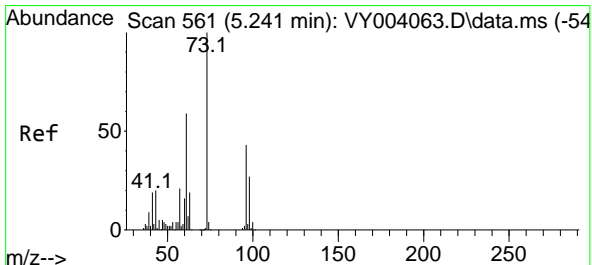
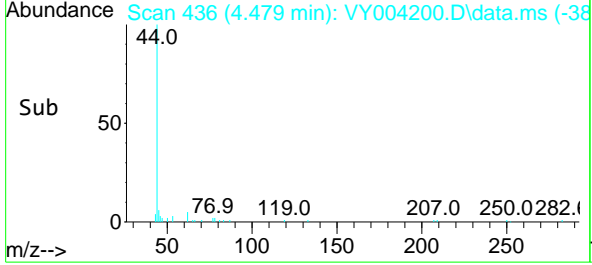
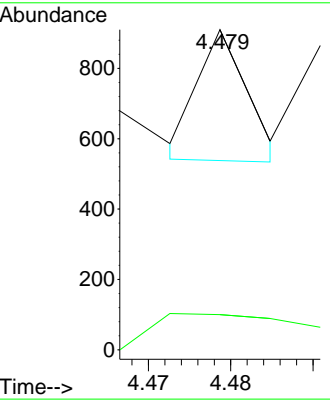
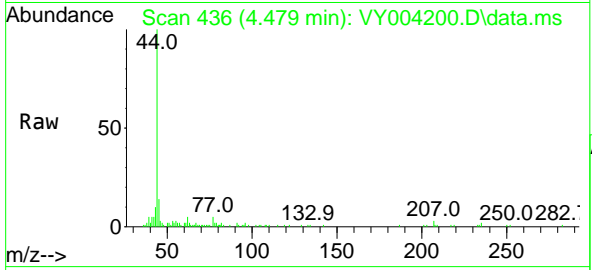


#18
 Methyl Acetate
 Concen: 70.50 ug/l
 RT: 4.479 min Scan# 436
 Delta R.T. -0.012 min
 Lab File: VY004200.D
 Acq: 25 Mar 2021 13:57

Instrument :
 MSVOA_Y
 ClientSampled :
 PHC-326FB-003RE

Tgt Ion: 43 Resp: 156

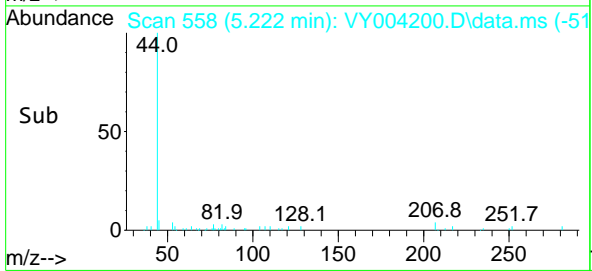
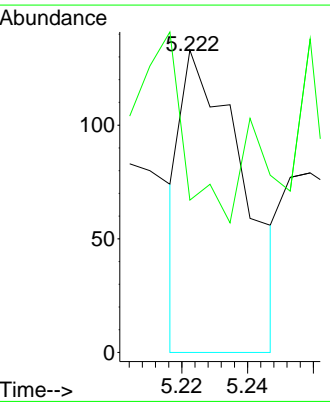
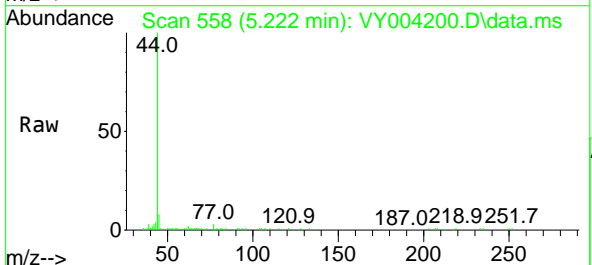
Ion	Ratio	Lower	Upper
43	100		
74	114.1	17.6	26.4#

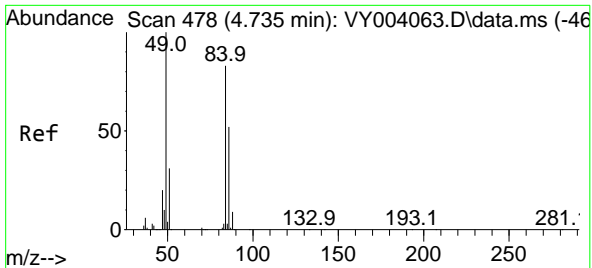


#19
 Methyl tert-butyl Ether
 Concen: 18.06 ug/l
 RT: 5.222 min Scan# 558
 Delta R.T. -0.019 min
 Lab File: VY004200.D
 Acq: 25 Mar 2021 13:57

Tgt Ion: 73 Resp: 170

Ion	Ratio	Lower	Upper
73	100		
57	0.0	17.5	26.3#

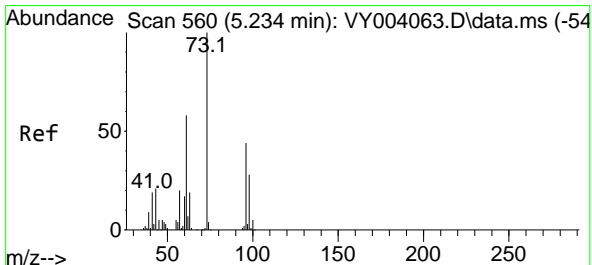
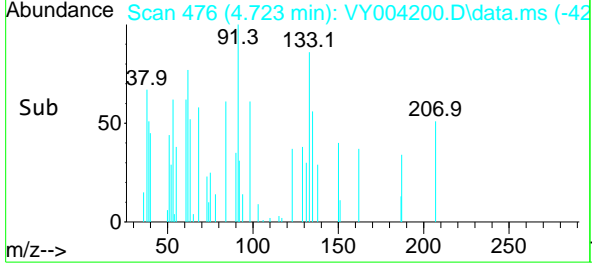
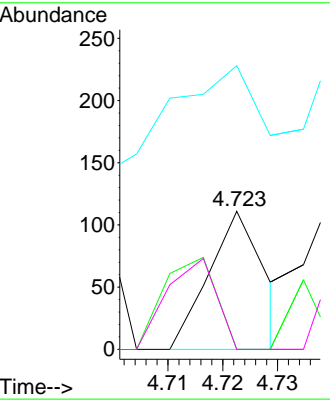
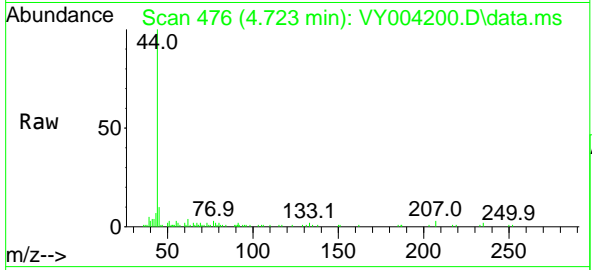




#20
 Methylene Chloride
 Concen: 18.80 ug/l
 RT: 4.723 min Scan# 476
 Delta R.T. -0.012 min
 Lab File: VY004200.D
 Acq: 25 Mar 2021 13:57

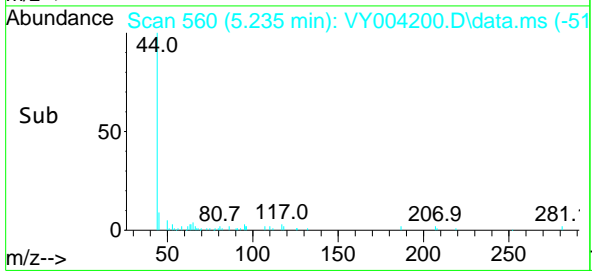
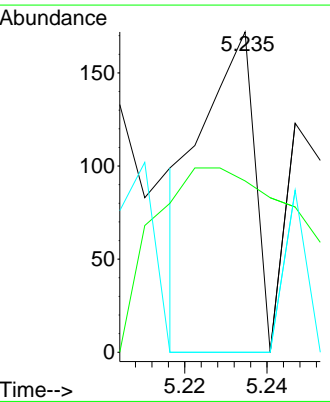
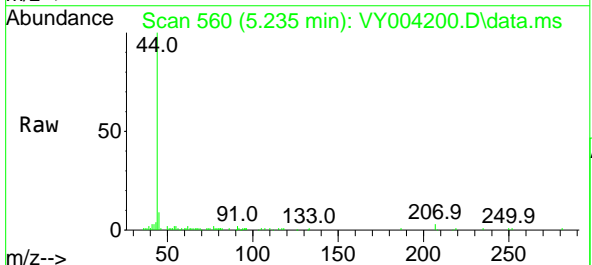
Instrument :
 MSVOA_Y
Client Sampled :
 PHC-326FB-003RE

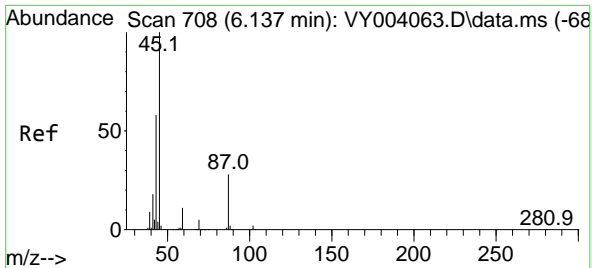
Tgt Ion	Resp	Lower	Upper
84	100		
49	0.0	105.8	158.6#
51	50.5	32.6	48.8#
86	0.0	52.1	78.1#



#21
 trans-1,2-Dichloroethene
 Concen: 41.73 ug/l
 RT: 5.235 min Scan# 560
 Delta R.T. 0.001 min
 Lab File: VY004200.D
 Acq: 25 Mar 2021 13:57

Tgt Ion	Resp	Lower	Upper
96	100		
61	7.0	110.8	166.2#
98	0.0	51.0	76.6#

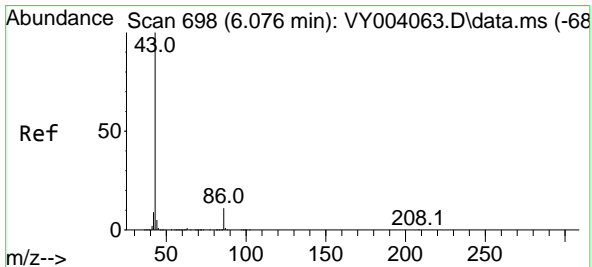
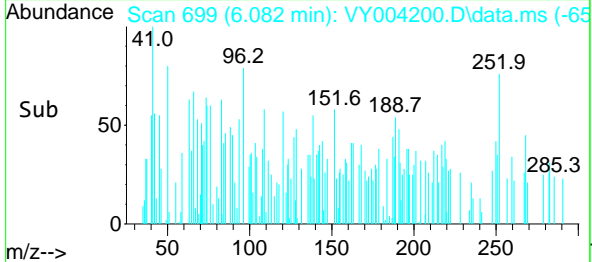
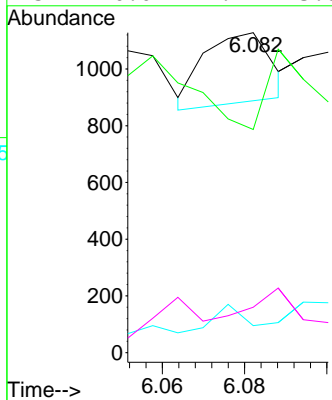
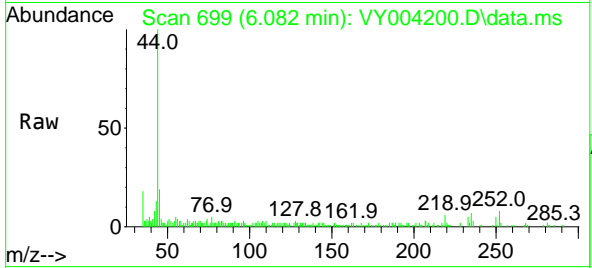




#22
 Diisopropyl ether
 Concen: 24.52 ug/l
 RT: 6.082 min Scan# 699
 Delta R.T. -0.055 min
 Lab File: VY004200.D
 Acq: 25 Mar 2021 13:57

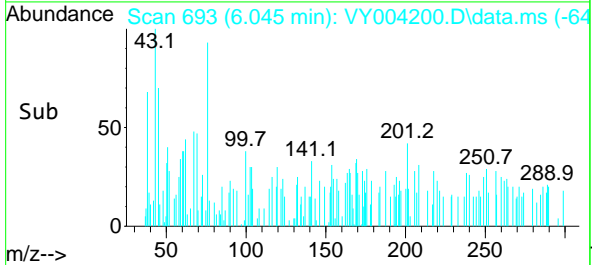
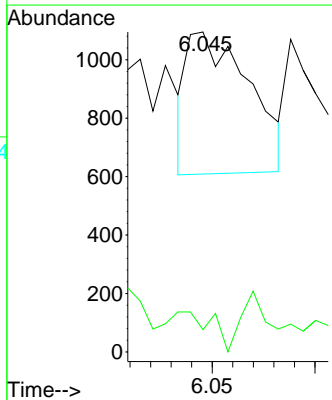
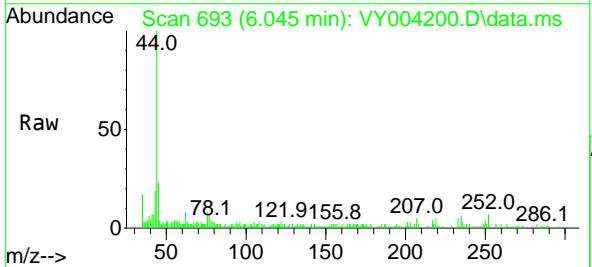
Instrument :
 MSVOA_Y
 ClientSampleId :
 PHC-326FB-003RE

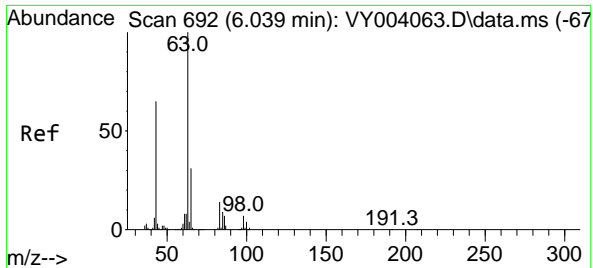
Tgt Ion	Resp	Lower	Upper
45	100		
43	0.0	45.1	67.7#
87	10.9	21.0	31.4#
59	0.0	9.2	13.8#



#23
 Vinyl Acetate
 Concen: 134.38 ug/l
 RT: 6.045 min Scan# 693
 Delta R.T. -0.031 min
 Lab File: VY004200.D
 Acq: 25 Mar 2021 13:57

Tgt Ion	Resp	Lower	Upper
43	100		
86	0.0	7.8	11.6#

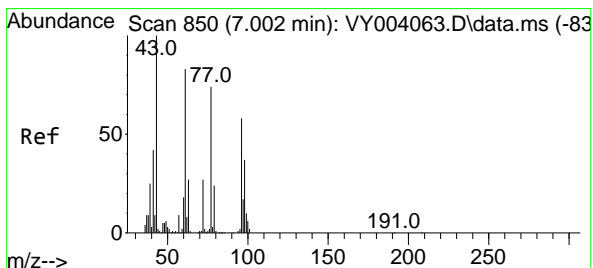
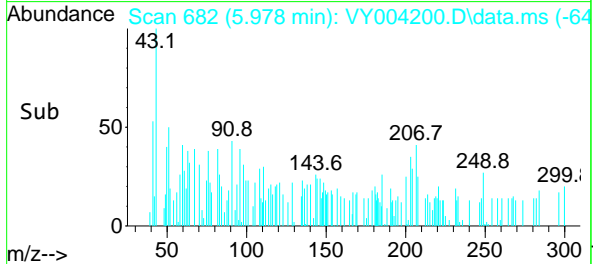
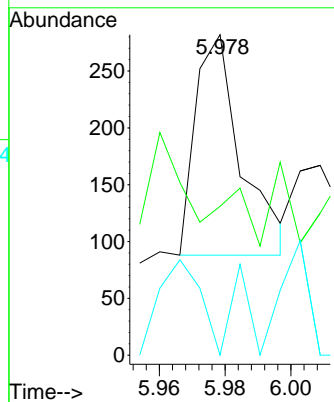
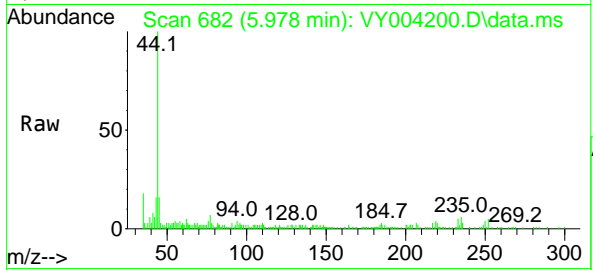




#24
 1,1-Dichloroethane
 Concen: 29.18 ug/l
 RT: 5.978 min Scan# 682
 Delta R.T. -0.061 min
 Lab File: VY004200.D
 Acq: 25 Mar 2021 13:57

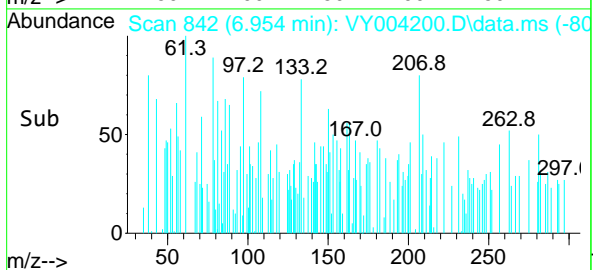
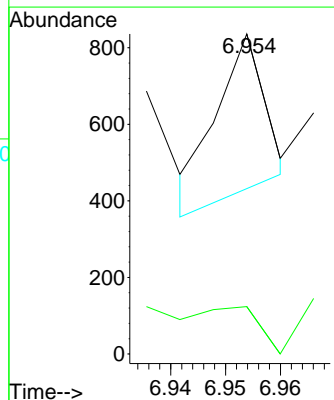
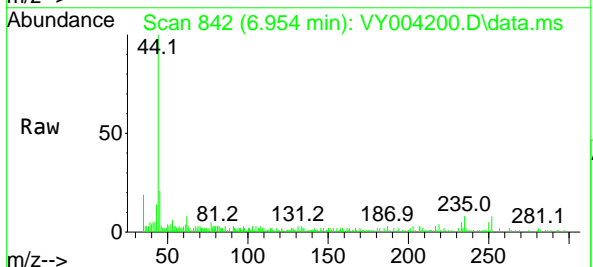
Instrument :
 MSVOA_Y
 ClientSampled :
 PHC-326FB-003RE

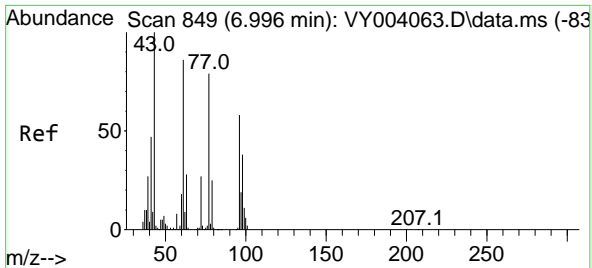
Tgt Ion	Resp	Lower	Upper
63	100		
98	0.0	3.5	10.4#
100	0.0	2.3	6.9#



#25
 2-Butanone
 Concen: 200.60 ug/l
 RT: 6.954 min Scan# 842
 Delta R.T. -0.048 min
 Lab File: VY004200.D
 Acq: 25 Mar 2021 13:57

Tgt Ion	Resp	Lower	Upper
43	100		
72	33.8	19.4	29.0#

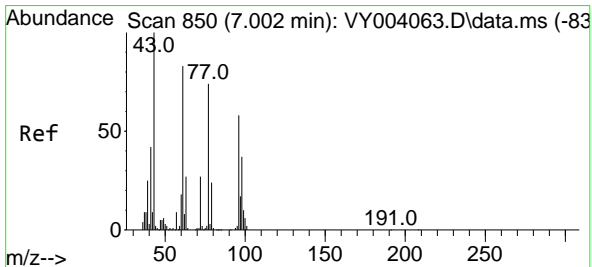
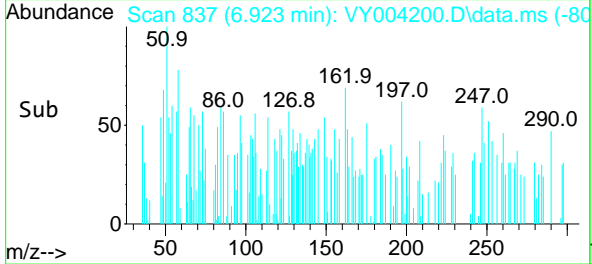
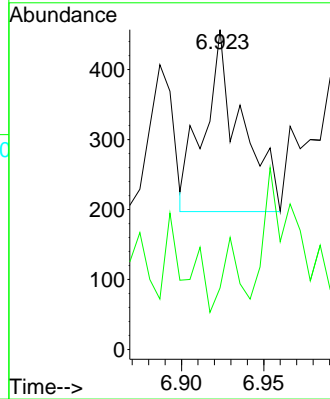
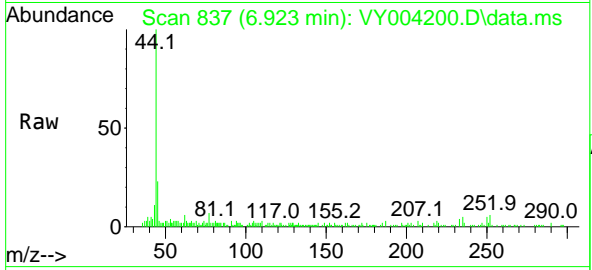




#26
 2,2-Dichloropropane
 Concen: 66.17 ug/l
 RT: 6.923 min Scan# 837
 Delta R.T. -0.073 min
 Lab File: VY004200.D
 Acq: 25 Mar 2021 13:57

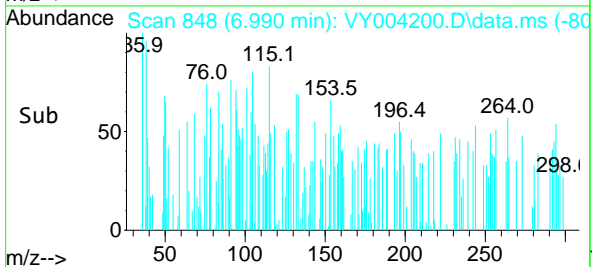
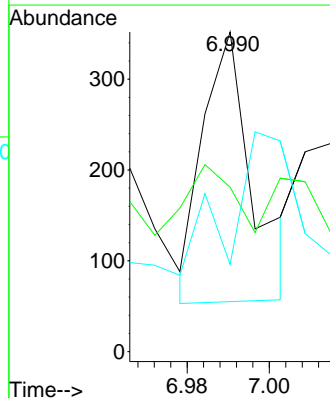
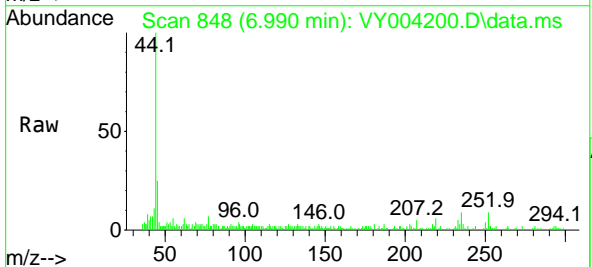
Instrument :
 MSVOA_Y
 ClientSampled :
 PHC-326FB-003RE

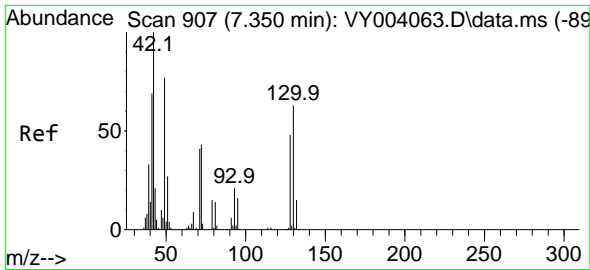
Tgt Ion: 77 Resp: 405
 Ion Ratio Lower Upper
 77 100
 97 18.3 11.4 34.1



#27
 cis-1,2-Dichloroethene
 Concen: 58.65 ug/l
 RT: 6.990 min Scan# 848
 Delta R.T. -0.012 min
 Lab File: VY004200.D
 Acq: 25 Mar 2021 13:57

Tgt Ion: 96 Resp: 248
 Ion Ratio Lower Upper
 96 100
 61 24.2 0.0 303.6
 98 129.4 0.0 130.6



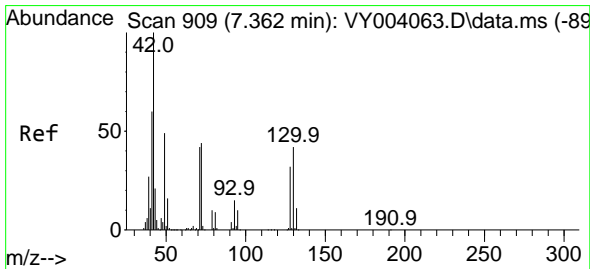
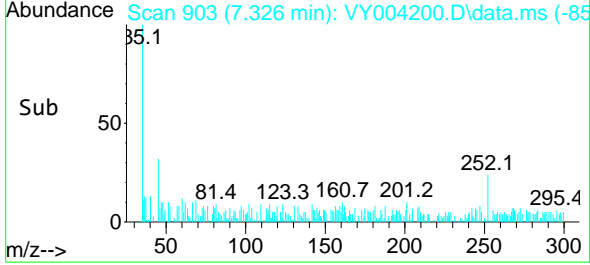
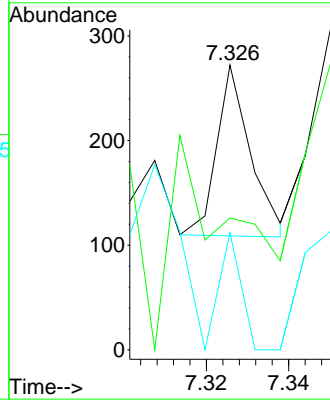
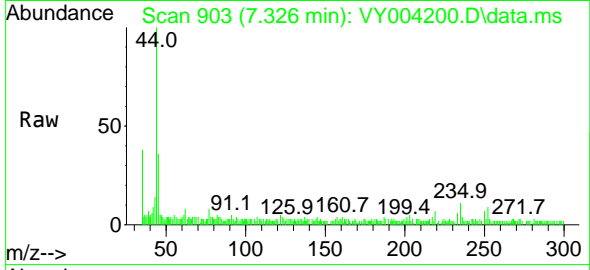


#28
 Bromochloromethane
 Concen: 33.23 ug/l
 RT: 7.326 min Scan# 903
 Delta R.T. -0.024 min
 Lab File: VY004200.D
 Acq: 25 Mar 2021 13:57

Instrument :
 MSVOA_Y
 ClientSampled :
 PHC-326FB-003RE

Tgt Ion: 49 Resp: 93

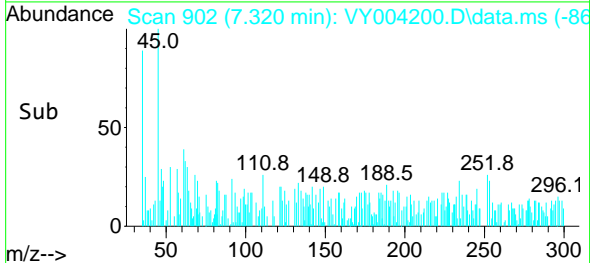
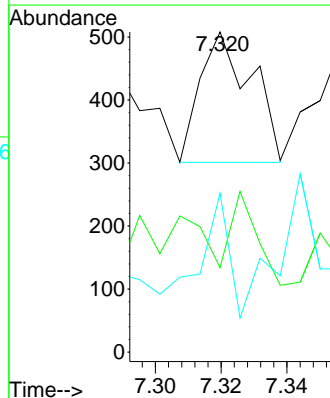
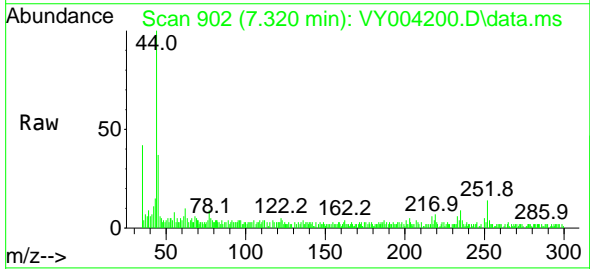
Ion	Ratio	Lower	Upper
49	100		
129	218.3	0.0	4.4#
130	260.2	59.0	88.4#

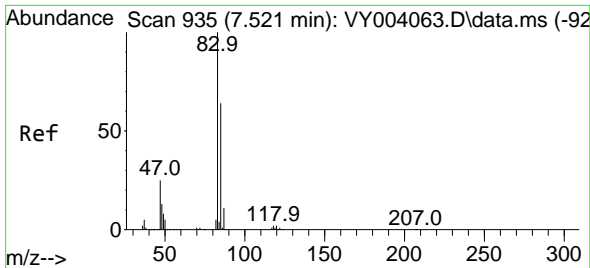


#29
 Tetrahydrofuran
 Concen: 268.26 ug/l
 RT: 7.320 min Scan# 902
 Delta R.T. -0.042 min
 Lab File: VY004200.D
 Acq: 25 Mar 2021 13:57

Tgt Ion: 42 Resp: 225

Ion	Ratio	Lower	Upper
42	100		
72	0.0	32.6	48.8#
71	54.2	31.0	46.6#

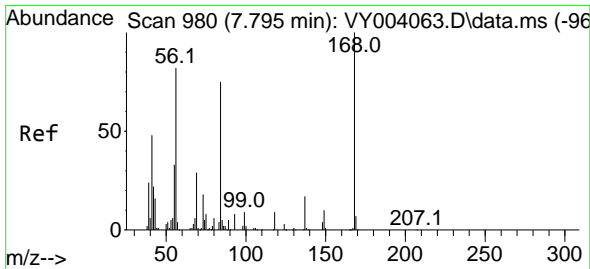
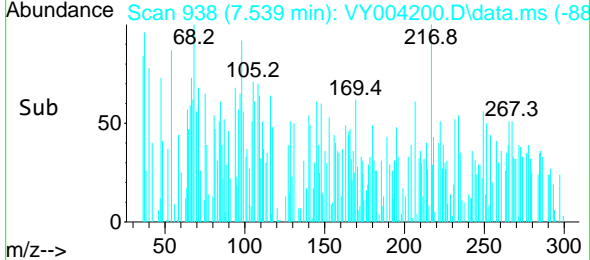
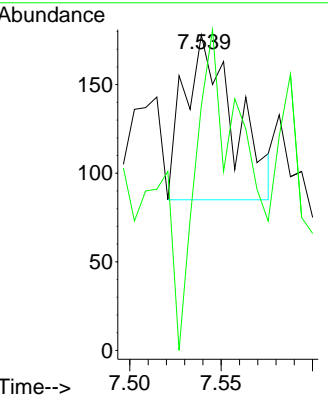
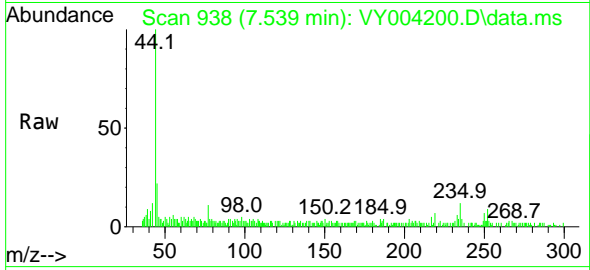




#30
 Chloroform
 Concen: 26.36 ug/l
 RT: 7.539 min Scan# 938
 Delta R.T. 0.018 min
 Lab File: VY004200.D
 Acq: 25 Mar 2021 13:57

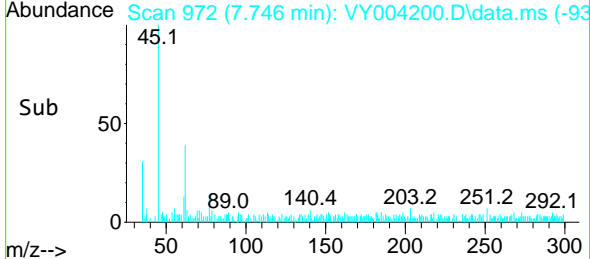
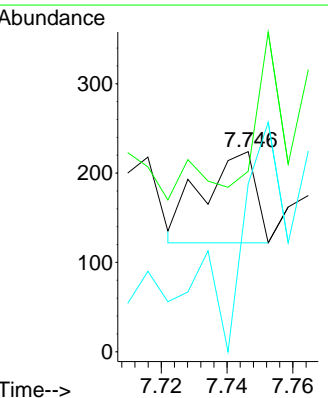
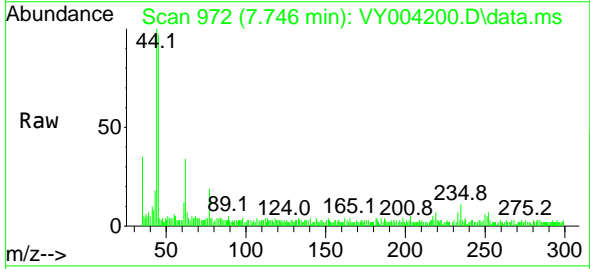
Instrument :
 MSVOA_Y
 ClientSampled :
 PHC-326FB-003RE

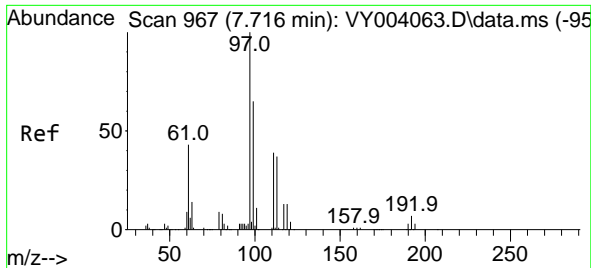
Tgt Ion: 83 Resp: 175
 Ion Ratio Lower Upper
 83 100
 85 69.9 51.0 76.6



#31
 Cyclohexane
 Concen: 17.36 ug/l
 RT: 7.746 min Scan# 972
 Delta R.T. -0.049 min
 Lab File: VY004200.D
 Acq: 25 Mar 2021 13:57

Tgt Ion: 56 Resp: 113
 Ion Ratio Lower Upper
 56 100
 69 31.4 25.3 37.9
 84 129.4 67.3 100.9#

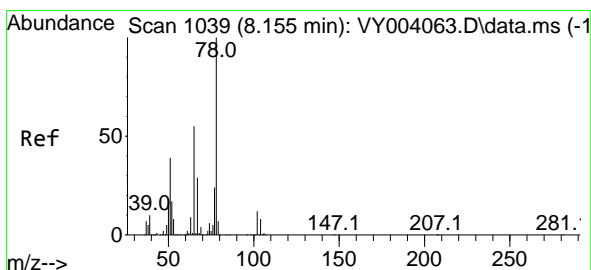
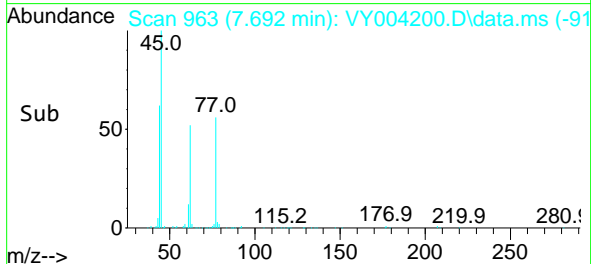
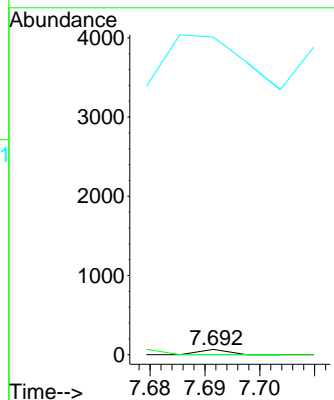
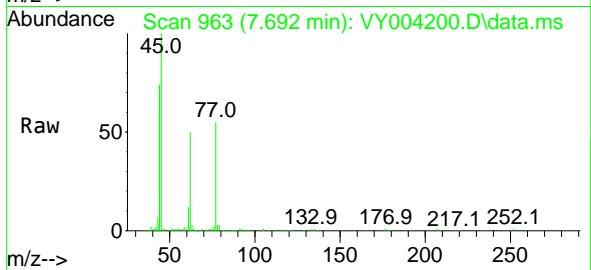




#32
 1,1,1-Trichloroethane
 Concen: 3.90 ug/l
 RT: 7.692 min Scan# 963
 Delta R.T. -0.024 min
 Lab File: VY004200.D
 Acq: 25 Mar 2021 13:57

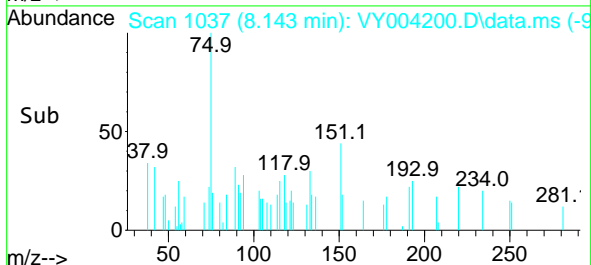
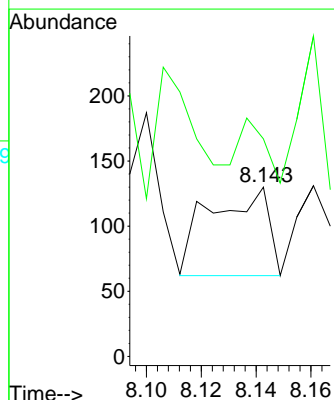
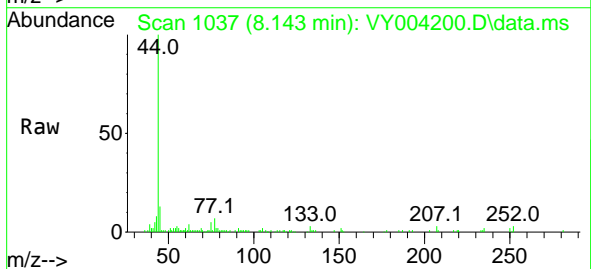
Instrument :
 MSVOA_Y
 ClientSampled :
 PHC-326FB-003RE

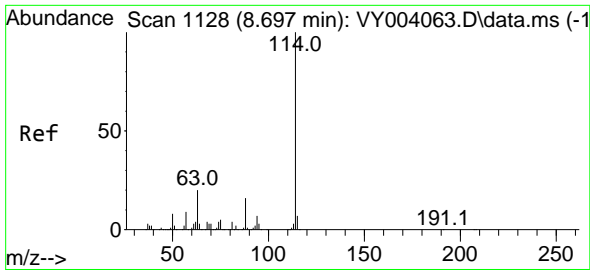
Tgt Ion	Resp	Lower	Upper
97	100		
99	204.2	51.8	77.6#
61	0.0	34.5	51.7#



#33
 1,2-Dichloroethane-d4
 Concen: 26.95 ug/l
 RT: 8.143 min Scan# 1037
 Delta R.T. -0.012 min
 Lab File: VY004200.D
 Acq: 25 Mar 2021 13:57

Tgt Ion	Resp	Lower	Upper
65	100		
67	69.0	0.0	101.4

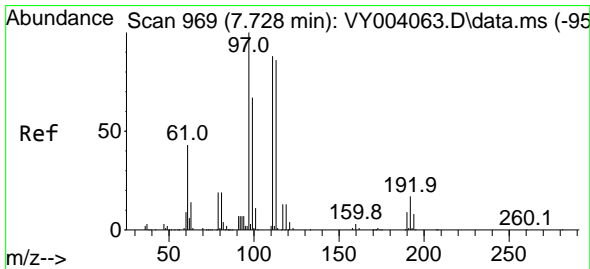
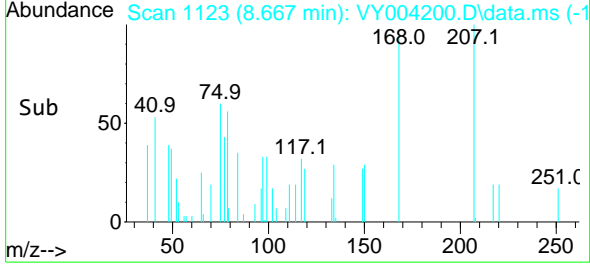
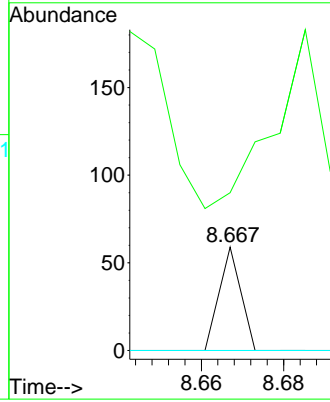
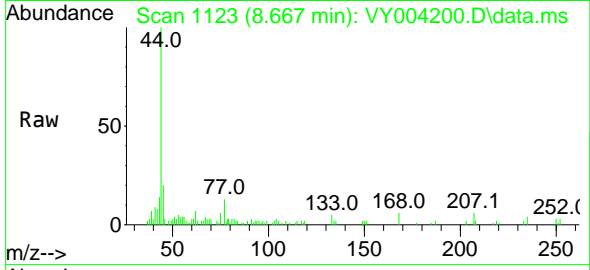




#34
 1,4-Difluorobenzene
 Concen: 50.00 ug/l
 RT: 8.667 min Scan# 1123
 Delta R.T. -0.030 min
 Lab File: VY004200.D
 Acq: 25 Mar 2021 13:57

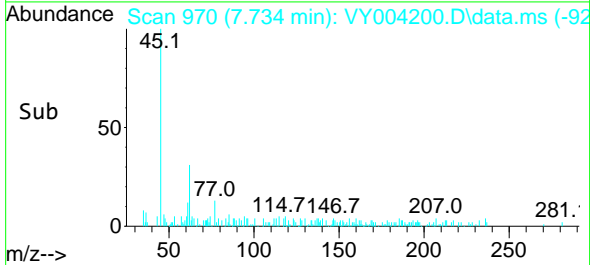
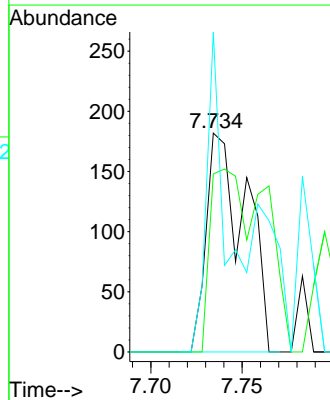
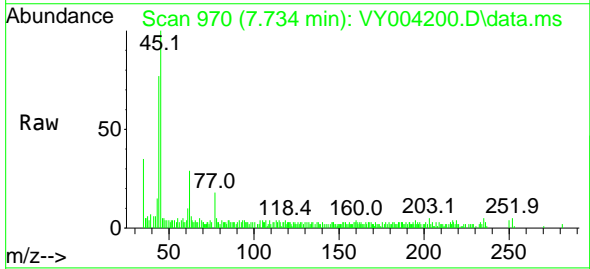
Instrument :
 MSVOA_Y
 ClientSampleId :
 PHC-326FB-003RE

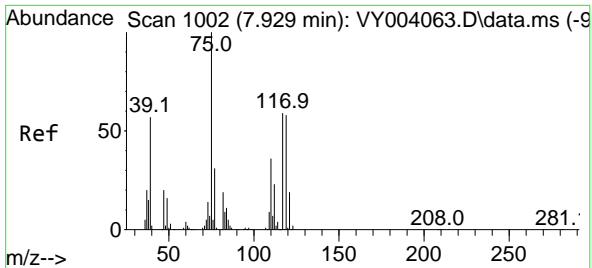
Tgt Ion	Resp	Lower	Upper
114	100		
63	0.0	0.0	41.6
88	0.0	0.0	31.4



#35
 Dibromofluoromethane
 Concen: 2192.45 ug/l
 RT: 7.734 min Scan# 970
 Delta R.T. 0.006 min
 Lab File: VY004200.D
 Acq: 25 Mar 2021 13:57

Tgt Ion	Resp	Lower	Upper
113	100		
111	72.4	83.2	124.8#
192	73.2	18.5	27.7#

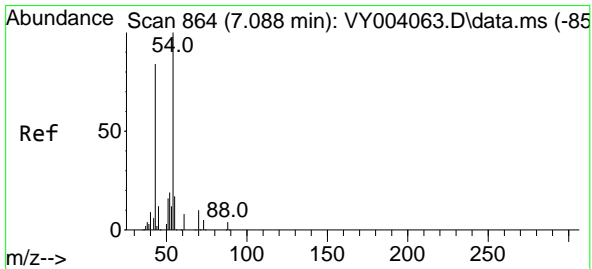
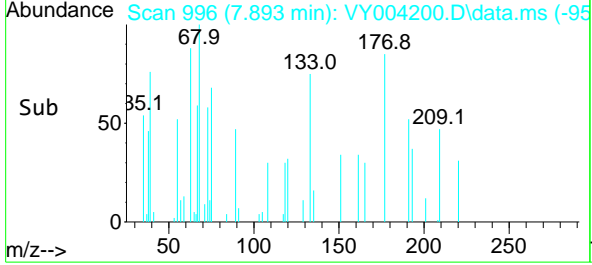
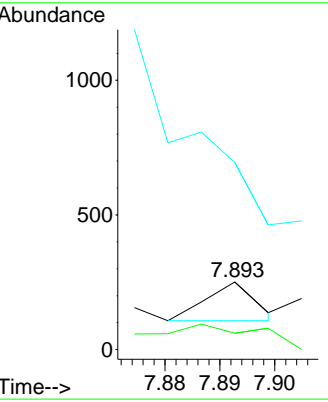
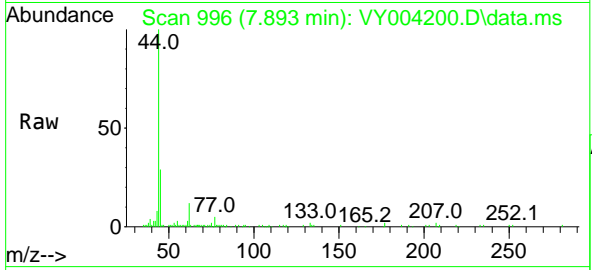




#36
 1,1-Dichloropropene
 Concen: 460.48 ug/l
 RT: 7.893 min Scan# 996
 Delta R.T. -0.036 min
 Lab File: VY004200.D
 Acq: 25 Mar 2021 13:57

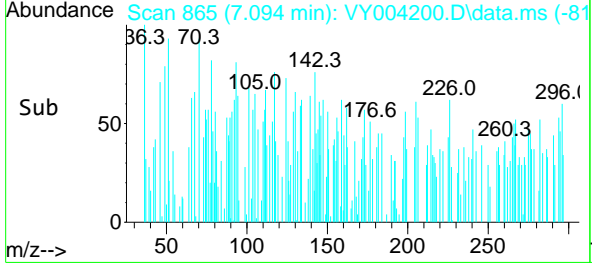
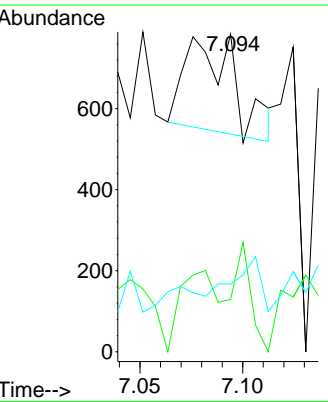
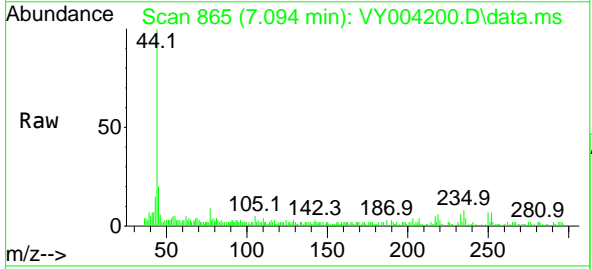
Instrument :
 MSVOA_Y
 ClientSampled :
 PHC-326FB-003RE

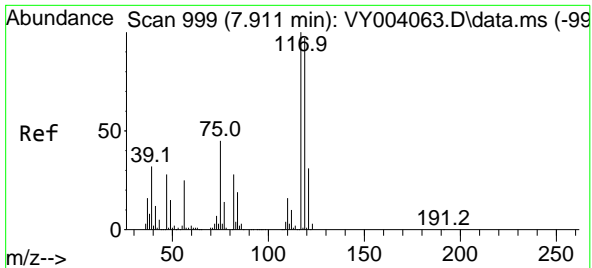
Tgt Ion	Resp	Lower	Upper
75	100		
110	173.0	17.4	52.3#
77	0.0	24.5	36.7#



#37
 Ethyl Acetate
 Concen: 3640.00 ug/l
 RT: 7.094 min Scan# 865
 Delta R.T. 0.006 min
 Lab File: VY004200.D
 Acq: 25 Mar 2021 13:57

Tgt Ion	Resp	Lower	Upper
43	100		
61	65.2	10.7	16.1#
70	0.0	7.7	11.5#



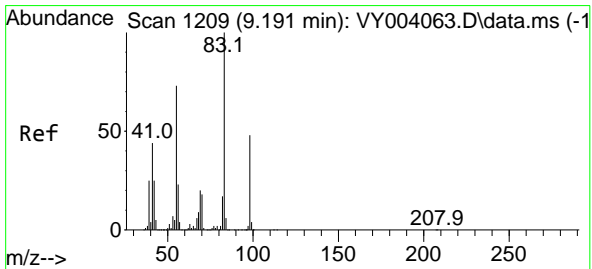
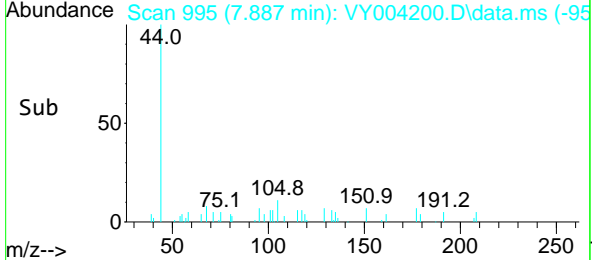
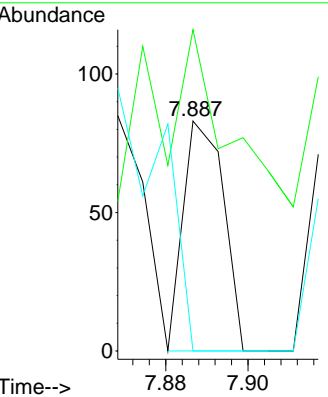
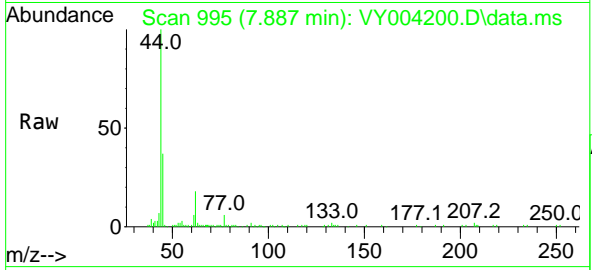


#38
 Carbon Tetrachloride
 Concen: 277.97 ug/l
 RT: 7.887 min Scan# 995
 Delta R.T. -0.024 min
 Lab File: VY004200.D
 Acq: 25 Mar 2021 13:57

Instrument :
 MSVOA_Y
 ClientSampled :
 PHC-326FB-003RE

Tgt Ion:117 Resp: 57

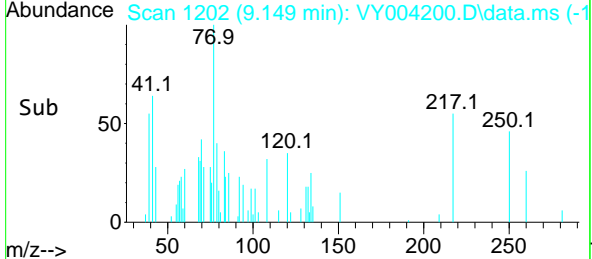
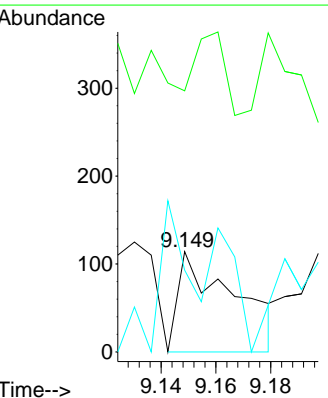
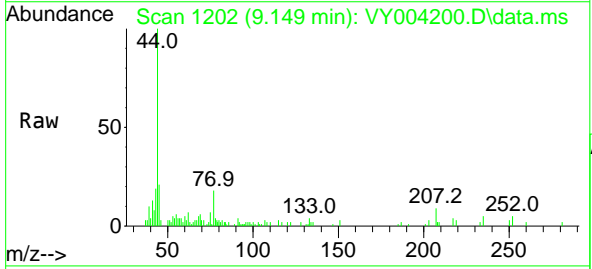
Ion	Ratio	Lower	Upper
117	100		
119	61.4	75.4	113.0#
121	0.0	24.2	36.2#

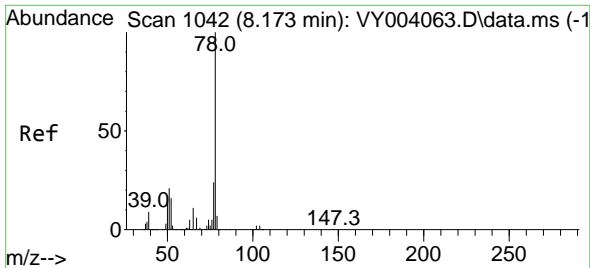


#39
 Methylcyclohexane
 Concen: 648.88 ug/l
 RT: 9.149 min Scan# 1202
 Delta R.T. -0.042 min
 Lab File: VY004200.D
 Acq: 25 Mar 2021 13:57

Tgt Ion: 83 Resp: 162

Ion	Ratio	Lower	Upper
83	100		
55	0.0	65.6	98.4#
98	35.1	39.5	59.3#

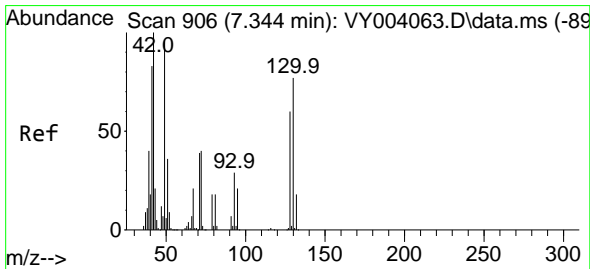
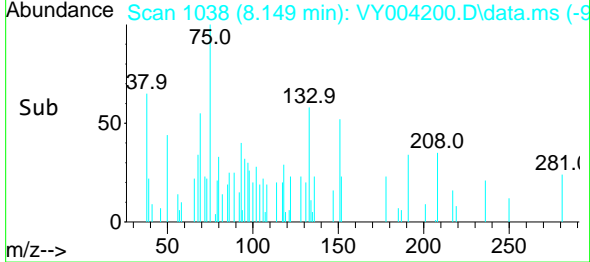
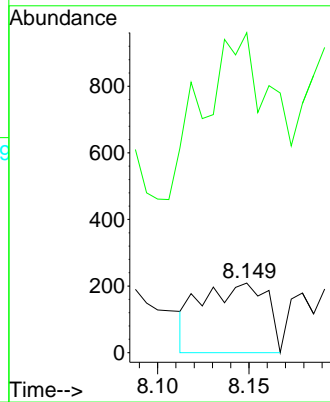
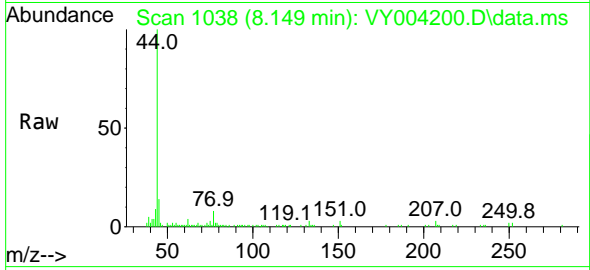




#40
Benzene
Concen: 958.75 ug/l
RT: 8.149 min Scan# 1038
Delta R.T. -0.024 min
Lab File: VY004200.D
Acq: 25 Mar 2021 13:57

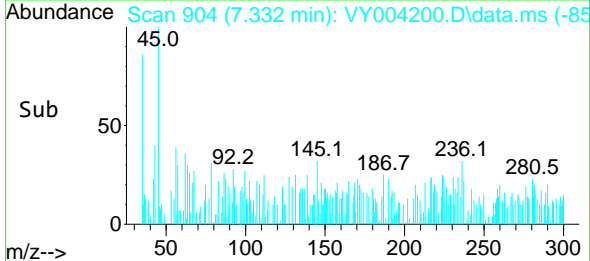
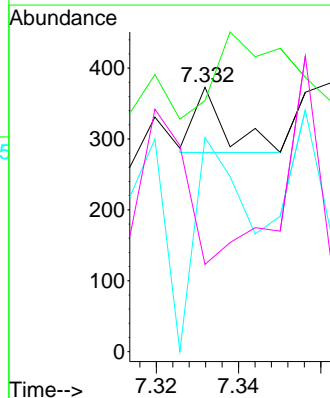
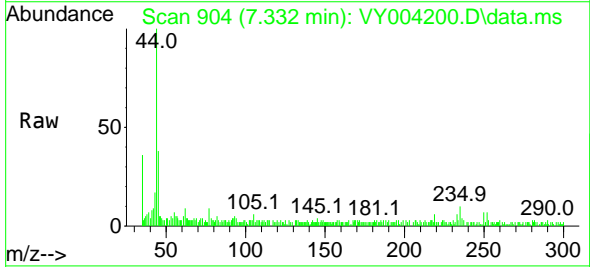
Instrument :
MSVOA_Y
ClientSampled :
PHC-326FB-003RE

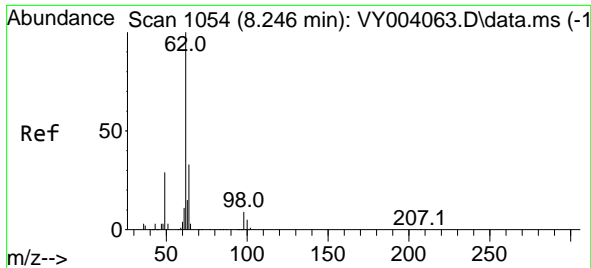
Tgt Ion: 78 Resp: 522
Ion Ratio Lower Upper
78 100
77 166.0 20.1 30.1#



#41
Methacrylonitrile
Concen: 759.55 ug/l
RT: 7.332 min Scan# 904
Delta R.T. -0.012 min
Lab File: VY004200.D
Acq: 25 Mar 2021 13:57

Tgt Ion: 41 Resp: 49
Ion Ratio Lower Upper
41 100
39 314.3 91.2 136.8#
67 534.7 0.0 0.0#
52 0.0 0.0 0.0

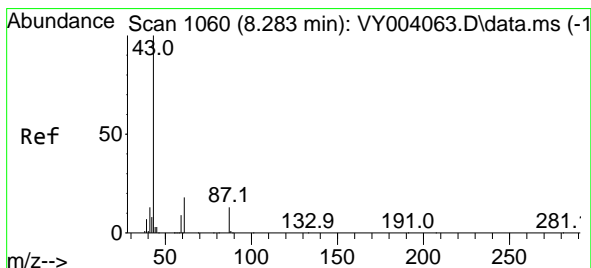
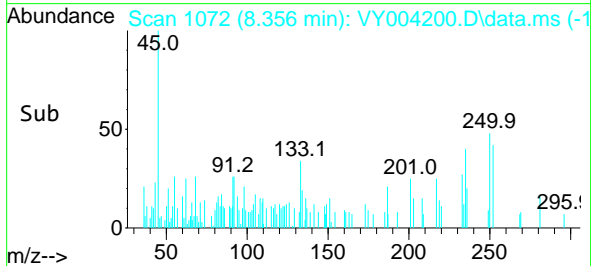
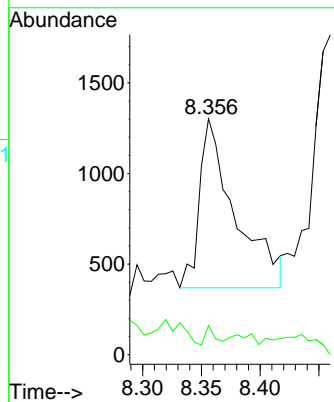
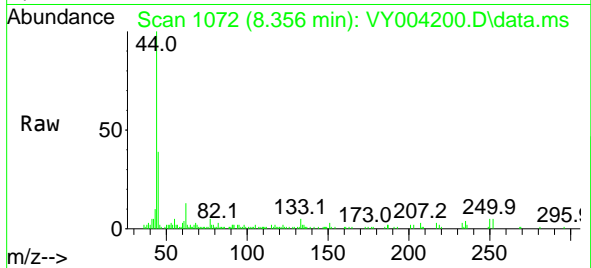




#42
 1,2-Dichloroethane
 Concen: 11855.98 ug/l
 RT: 8.356 min Scan# 1072
 Delta R.T. 0.110 min
 Lab File: VY004200.D
 Acq: 25 Mar 2021 13:57

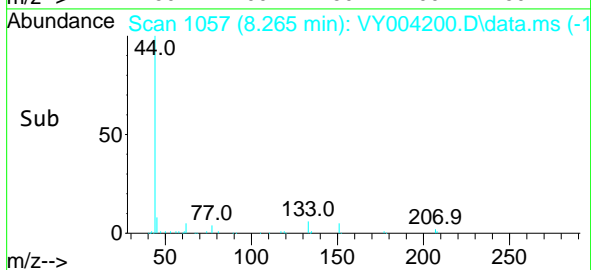
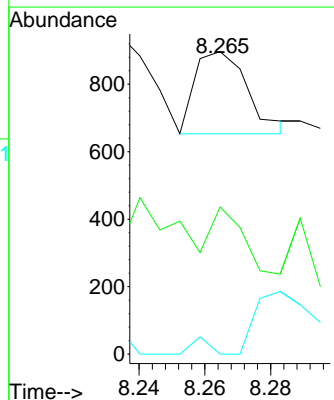
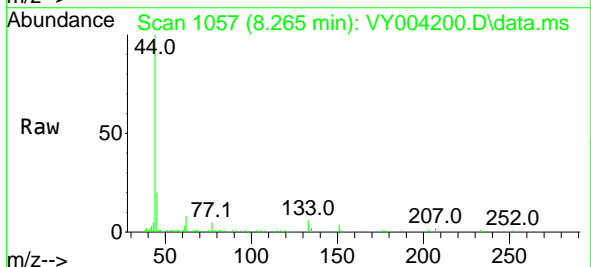
Instrument :
 MSVOA_Y
 ClientSampled :
 PHC-326FB-003RE

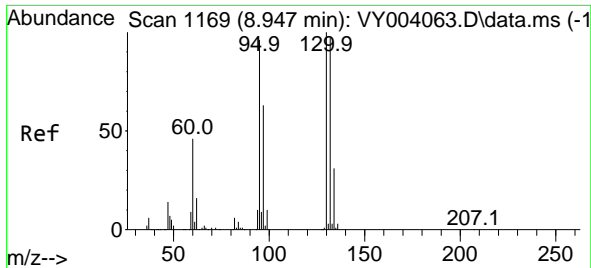
Tgt Ion: 62 Resp: 1973
 Ion Ratio Lower Upper
 62 100
 98 3.1 0.0 17.0



#43
 Isopropyl Acetate
 Concen: 1297.12 ug/l
 RT: 8.265 min Scan# 1057
 Delta R.T. -0.018 min
 Lab File: VY004200.D
 Acq: 25 Mar 2021 13:57

Tgt Ion: 43 Resp: 271
 Ion Ratio Lower Upper
 43 100
 61 0.0 22.1 33.1#
 87 128.8 9.8 14.8#

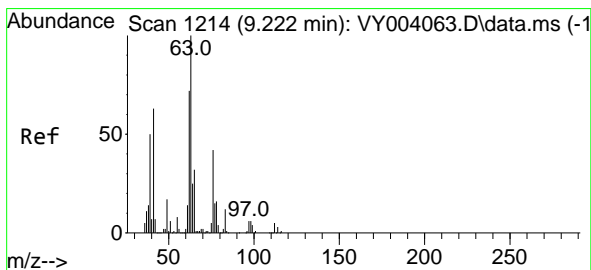
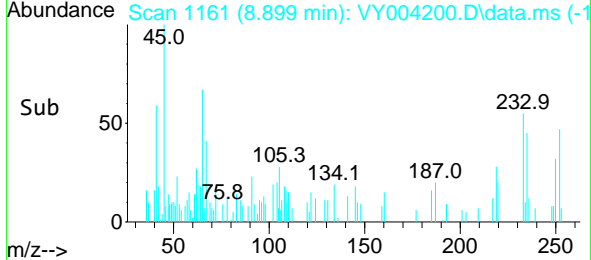
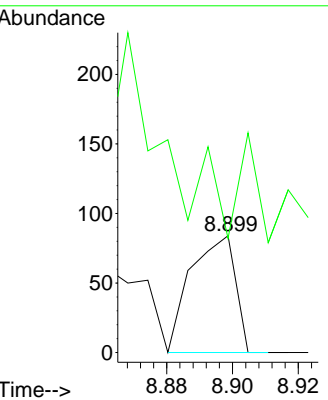
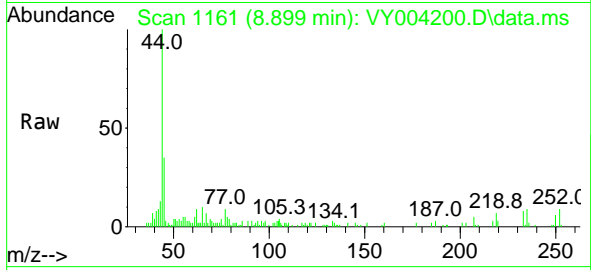




#44
 Trichloroethene
 Concen: 501.03 ug/l
 RT: 8.899 min Scan# 1161
 Delta R.T. -0.048 min
 Lab File: VY004200.D
 Acq: 25 Mar 2021 13:57

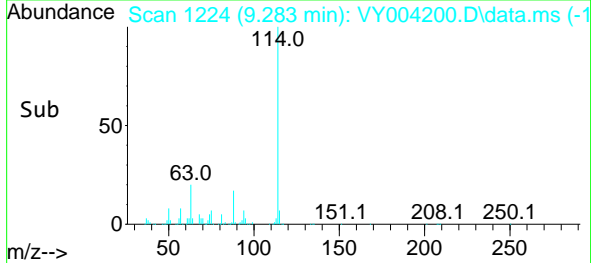
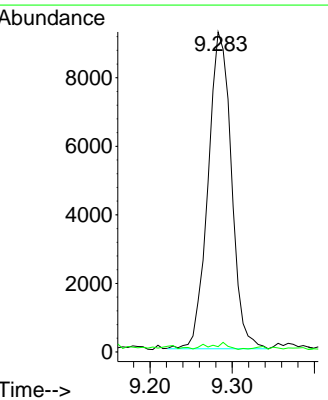
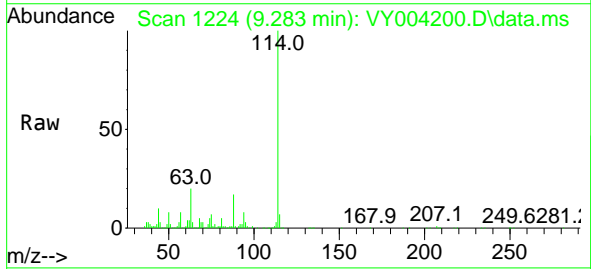
Instrument :
 MSVOA_Y
 ClientSampled :
 PHC-326FB-003RE

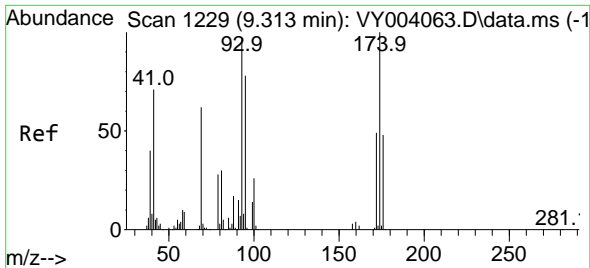
Tgt Ion:130 Resp: 79
 Ion Ratio Lower Upper
 130 100
 95 3.6 0.0 188.0



#45
 1,2-Dichloropropane
 Concen: 134190.36 ug/l
 RT: 9.283 min Scan# 1224
 Delta R.T. 0.061 min
 Lab File: VY004200.D
 Acq: 25 Mar 2021 13:57

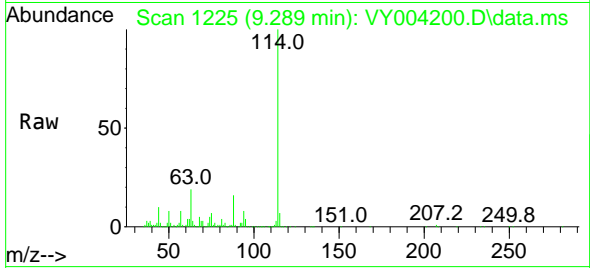
Tgt Ion: 63 Resp: 18241
 Ion Ratio Lower Upper
 63 100
 65 0.7 24.4 36.6#



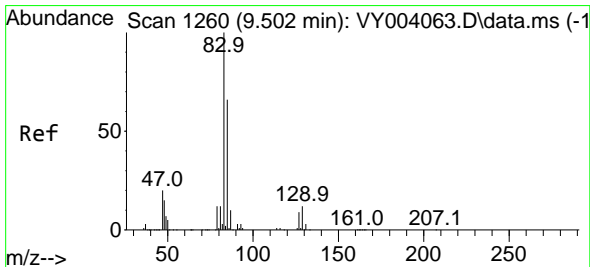
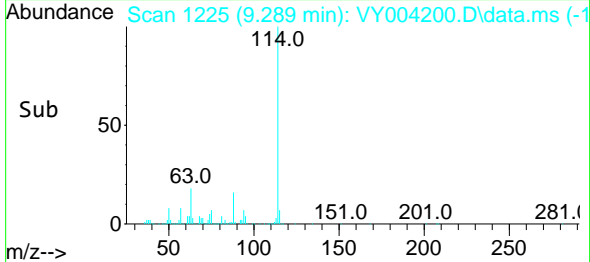
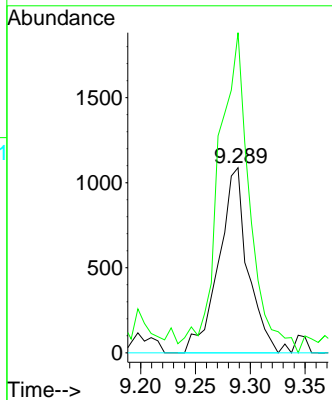


#46
 Dibromomethane
 Concen: 25669.77 ug/l
 RT: 9.289 min Scan# 1225
 Delta R.T. -0.024 min
 Lab File: VY004200.D
 Acq: 25 Mar 2021 13:57

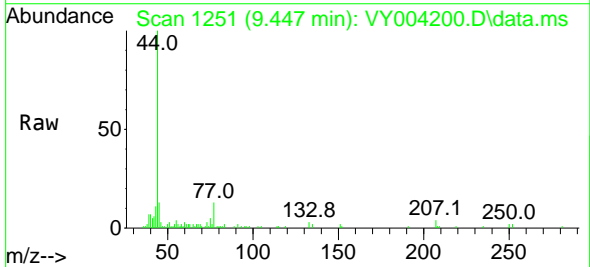
Instrument :
 MSVOA_Y
 ClientSampled :
 PHC-326FB-003RE



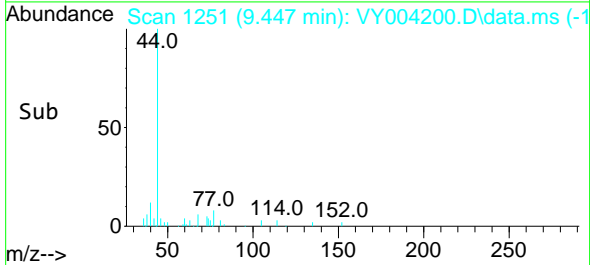
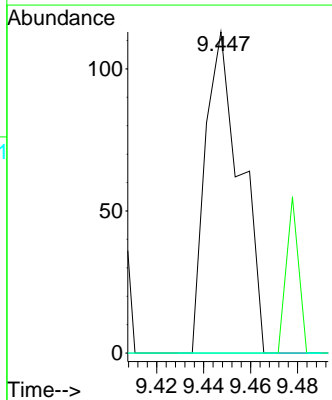
Tgt Ion	Resp	Lower	Upper
93	1995		
93	100		
95	186.5	66.3	99.5#
174	0.0	88.1	132.1#

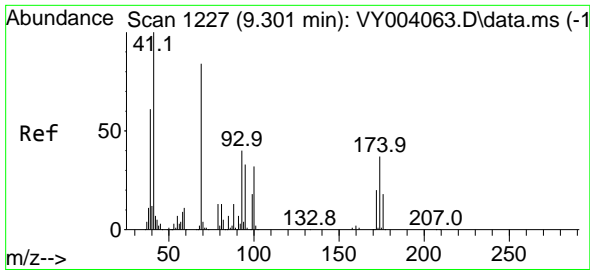


#47
 Bromodichloromethane
 Concen: 603.04 ug/l
 RT: 9.447 min Scan# 1251
 Delta R.T. -0.055 min
 Lab File: VY004200.D
 Acq: 25 Mar 2021 13:57



Tgt Ion	Resp	Lower	Upper
83	117		
83	100		
85	0.0	51.6	77.4#
127	0.0	6.5	9.7#

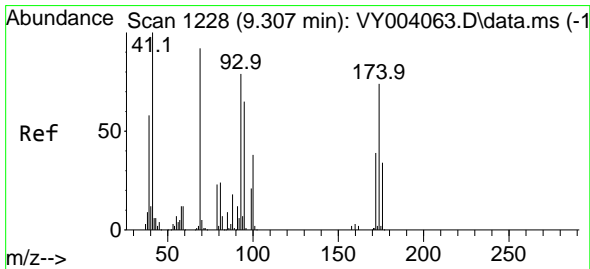
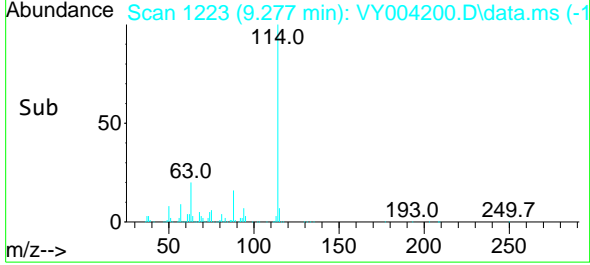
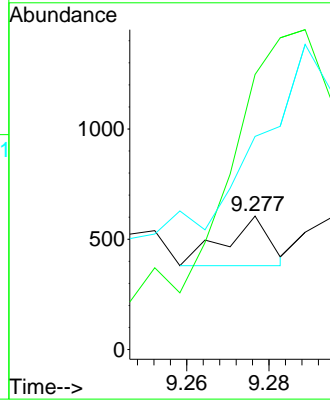
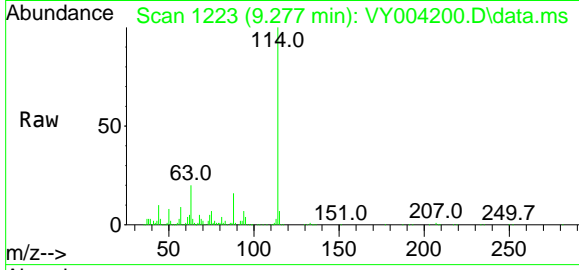




#48
 Methyl methacrylate
 Concen: 1722.70 ug/l
 RT: 9.277 min Scan# 1223
 Delta R.T. -0.024 min
 Lab File: VY004200.D
 Acq: 25 Mar 2021 13:57

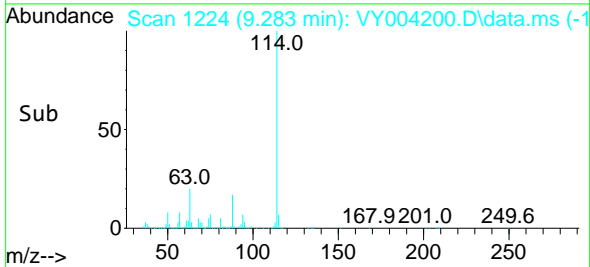
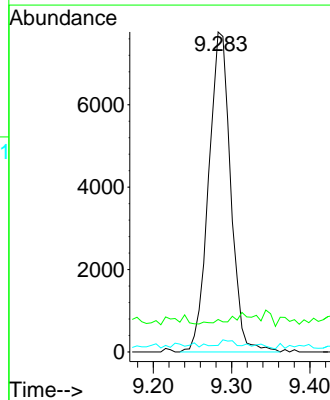
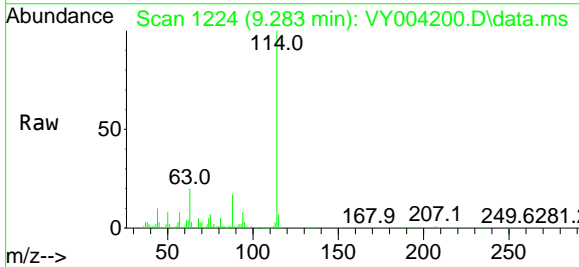
Instrument :
 MSVOA_Y
 Client Sampled :
 PHC-326FB-003RE

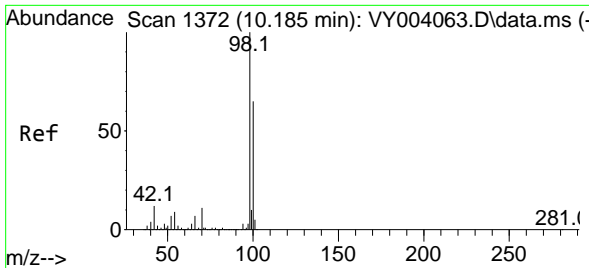
Tgt Ion	Resp	Lower	Upper
41	100		
69	1760.8	65.1	97.7#
39	1757.3	44.2	66.2#



#49
 1,4-Dioxane
 Concen: 15337540.99 ug/l
 RT: 9.283 min Scan# 1224
 Delta R.T. -0.024 min
 Lab File: VY004200.D
 Acq: 25 Mar 2021 13:57

Tgt Ion	Resp	Lower	Upper
88	100		
43	0.0	32.0	48.0#
58	0.9	56.5	84.7#

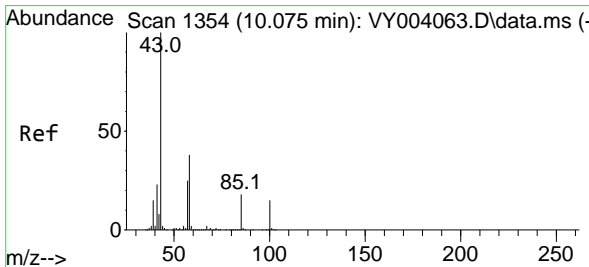
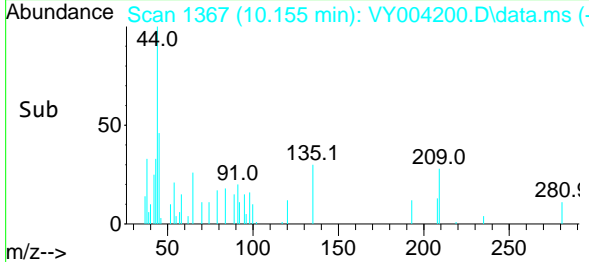
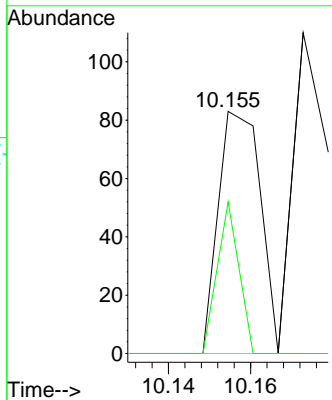
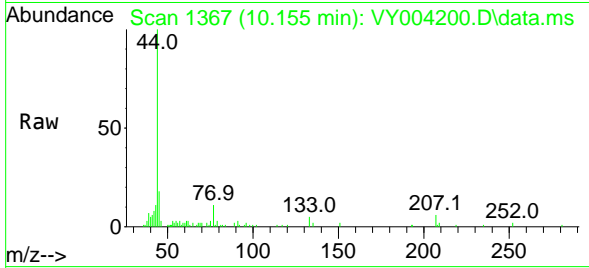




#50
 Toluene-d8
 Concen: 121.31 ug/l
 RT: 10.155 min Scan# 1367
 Delta R.T. -0.030 min
 Lab File: VY004200.D
 Acq: 25 Mar 2021 13:57

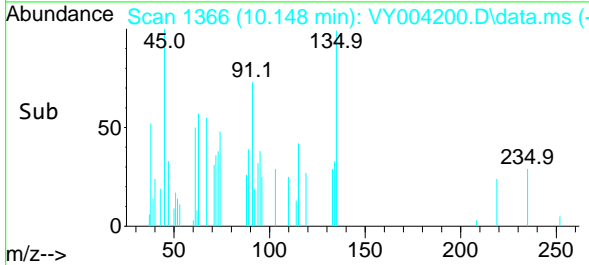
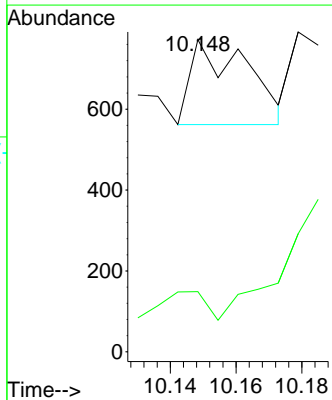
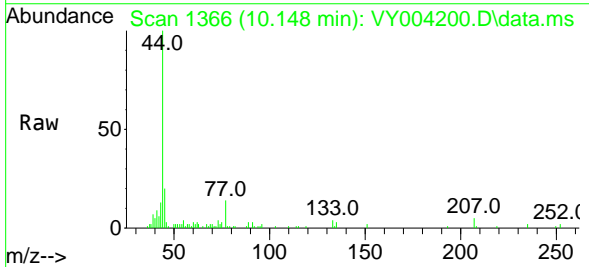
Instrument :
 MSVOA_Y
 ClientSampleId :
 PHC-326FB-003RE

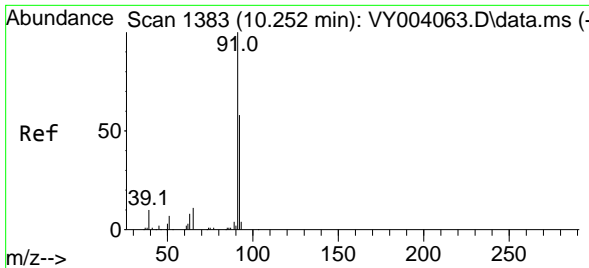
Tgt Ion: 98 Resp: 59
 Ion Ratio Lower Upper
 98 100
 100 32.2 51.8 77.6#



#51
 4-Methyl-2-Pentanone
 Concen: 2353.49 ug/l
 RT: 10.148 min Scan# 1366
 Delta R.T. 0.073 min
 Lab File: VY004200.D
 Acq: 25 Mar 2021 13:57

Tgt Ion: 43 Resp: 249
 Ion Ratio Lower Upper
 43 100
 58 34.9 29.8 44.8

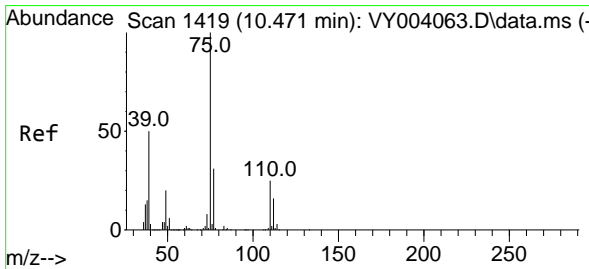
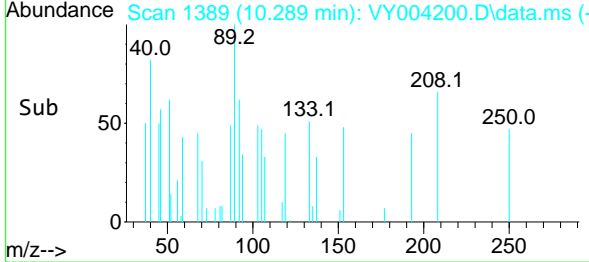
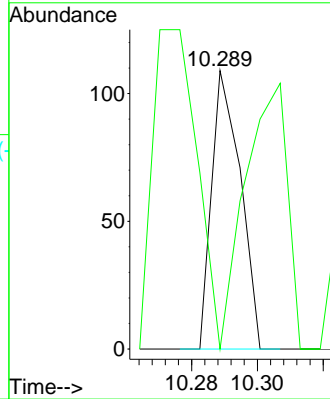
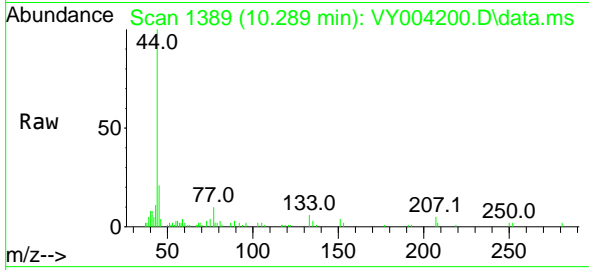




#52
 Toluene
 Concen: 187.18 ug/l
 RT: 10.289 min Scan# 1389
 Delta R.T. 0.037 min
 Lab File: VY004200.D
 Acq: 25 Mar 2021 13:57

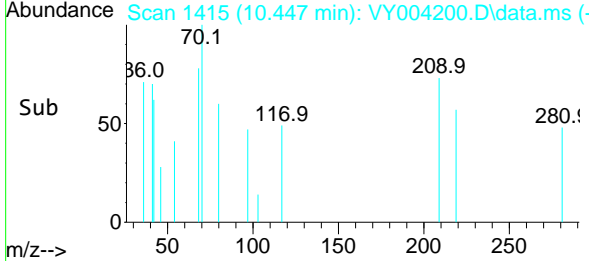
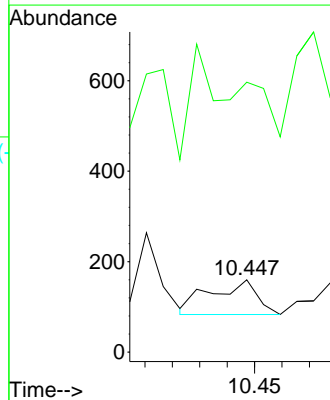
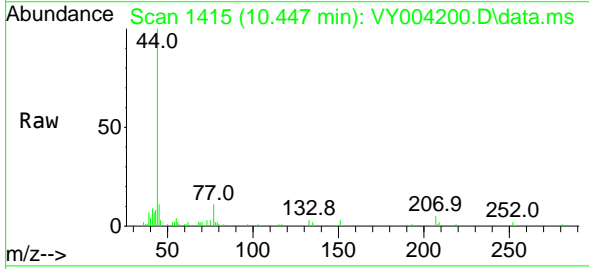
Instrument :
 MSVOA_Y
 ClientSampled :
 PHC-326FB-003RE

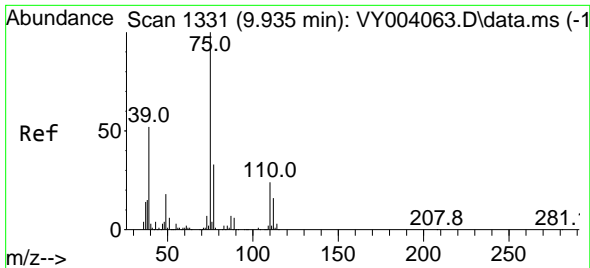
Tgt Ion: 92 Resp: 66
 Ion Ratio Lower Upper
 92 100
 91 177.3 141.0 211.4



#53
 t-1,3-Dichloropropene
 Concen: 439.71 ug/l
 RT: 10.447 min Scan# 1415
 Delta R.T. -0.024 min
 Lab File: VY004200.D
 Acq: 25 Mar 2021 13:57

Tgt Ion: 75 Resp: 90
 Ion Ratio Lower Upper
 75 100
 77 223.4 24.5 36.7#

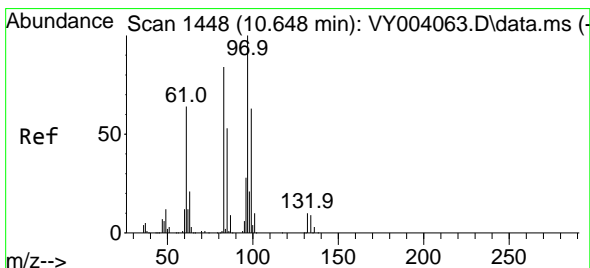
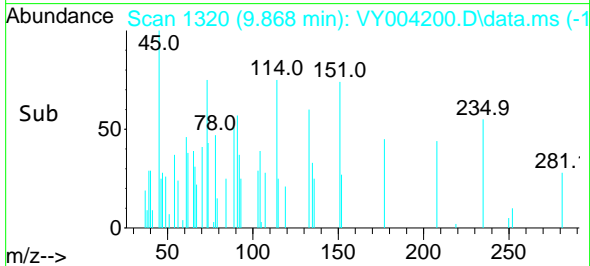
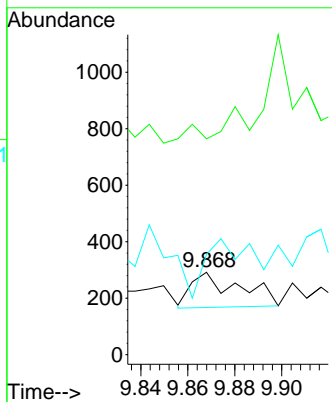
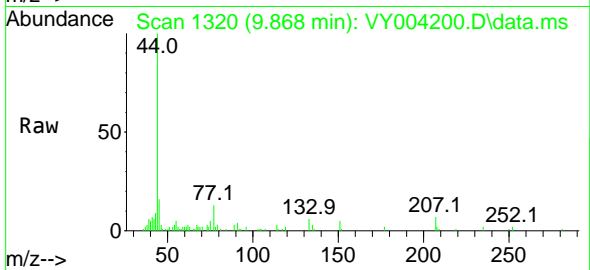




#54
 cis-1,3-Dichloropropene
 Concen: 771.75 ug/l
 RT: 9.868 min Scan# 1320
 Delta R.T. -0.067 min
 Lab File: VY004200.D
 Acq: 25 Mar 2021 13:57

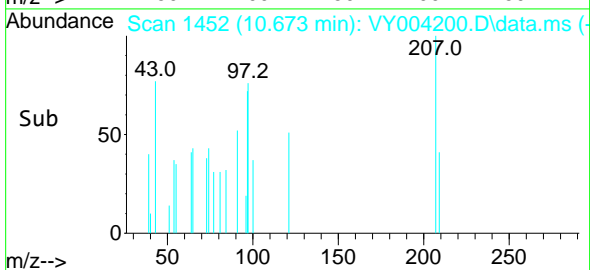
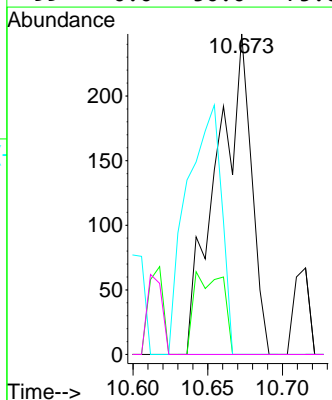
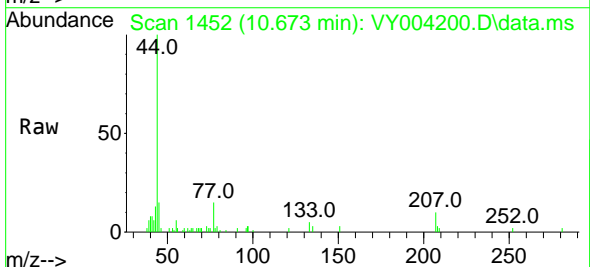
Instrument :
 MSVOA_Y
 ClientSampled :
 PHC-326FB-003RE

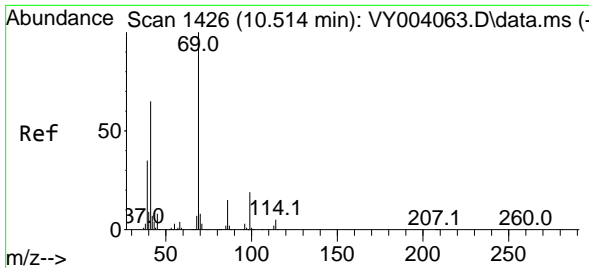
Tgt Ion	Resp	Lower	Upper
75	100		
77	0.0	24.2	36.4#
39	2.5	40.4	60.6#



#55
 1,1,2-Trichloroethane
 Concen: 3641.63 ug/l
 RT: 10.673 min Scan# 1452
 Delta R.T. 0.025 min
 Lab File: VY004200.D
 Acq: 25 Mar 2021 13:57

Tgt Ion	Resp	Lower	Upper
97	100		
83	0.0	69.4	104.0#
85	0.0	43.4	65.0#
99	0.0	50.0	75.0#



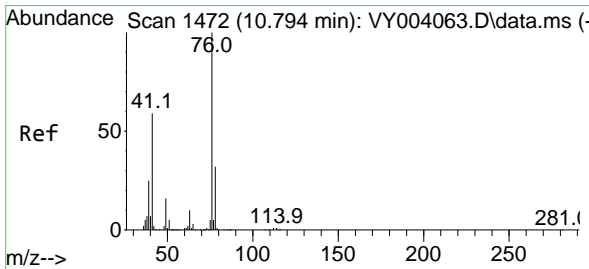
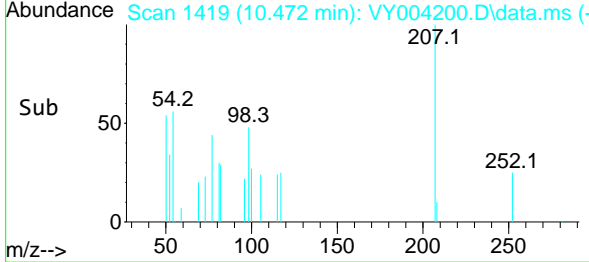
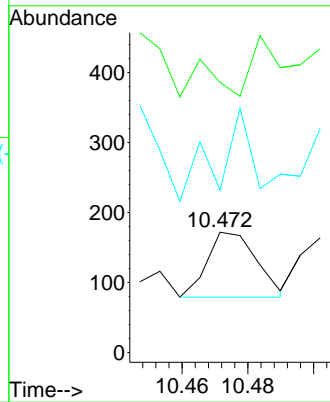
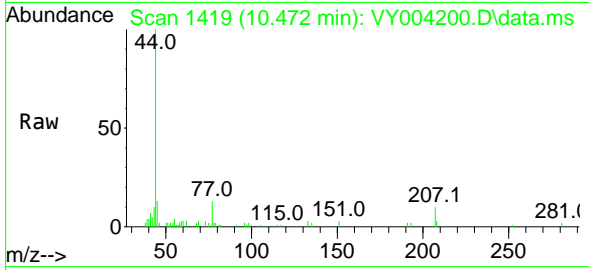


#56
 Ethyl methacrylate
 Concen: 634.91 ug/l
 RT: 10.472 min Scan# 1419
 Delta R.T. -0.042 min
 Lab File: VY004200.D
 Acq: 25 Mar 2021 13:57

Instrument :
 MSVOA_Y
 ClientSampleId :
 PHC-326FB-003RE

Tgt Ion: 69 Resp: 97

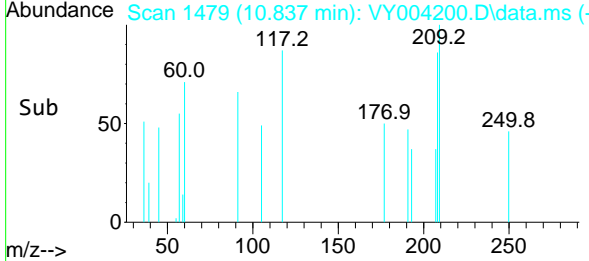
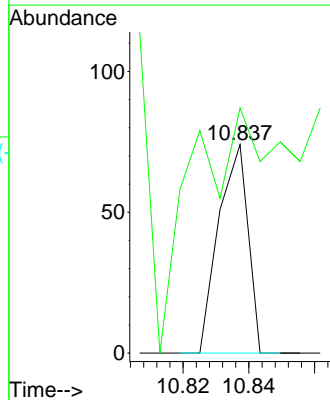
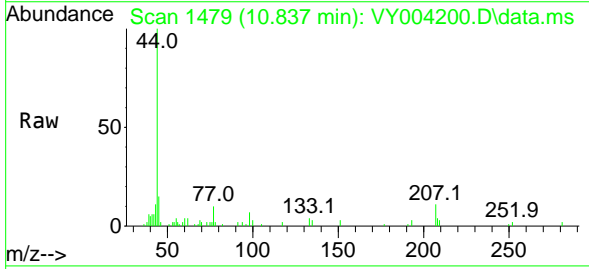
Ion	Ratio	Lower	Upper
69	100		
41	48.5	57.2	85.8#
39	123.7	27.8	41.6#

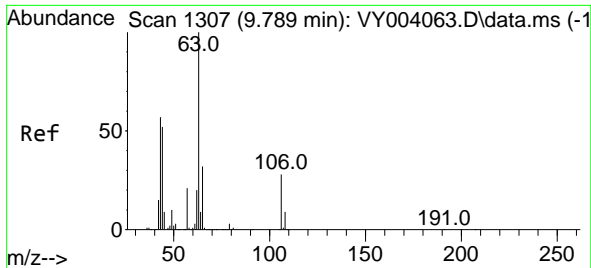


#57
 1,3-Dichloropropane
 Concen: 245.78 ug/l
 RT: 10.837 min Scan# 1479
 Delta R.T. 0.043 min
 Lab File: VY004200.D
 Acq: 25 Mar 2021 13:57

Tgt Ion: 76 Resp: 46

Ion	Ratio	Lower	Upper
76	100		
78	458.7	25.5	38.3#

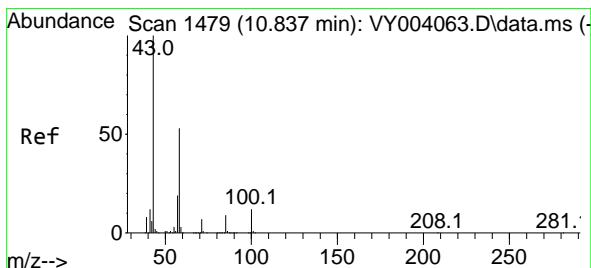
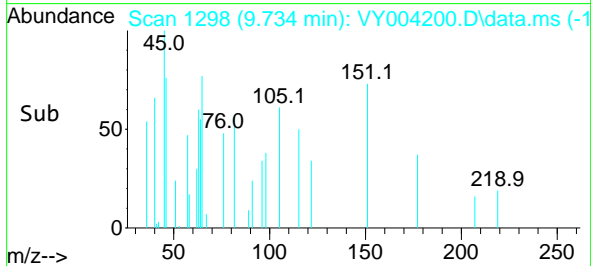
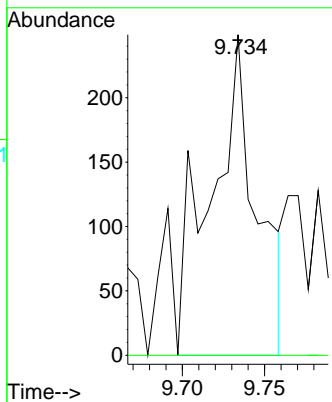
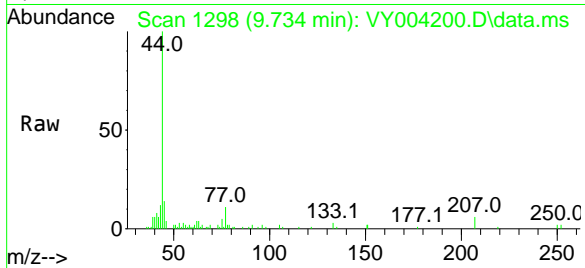




#58
 2-Chloroethyl Vinyl ether
 Concen: 8681.46 ug/l
 RT: 9.734 min Scan# 1298
 Delta R.T. -0.055 min
 Lab File: VY004200.D
 Acq: 25 Mar 2021 13:57

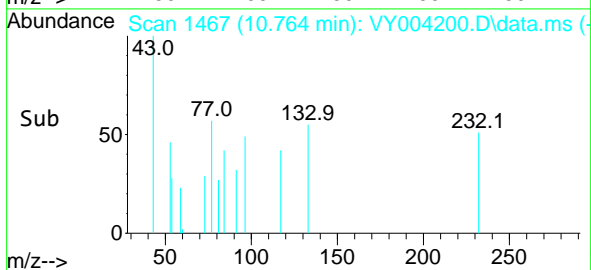
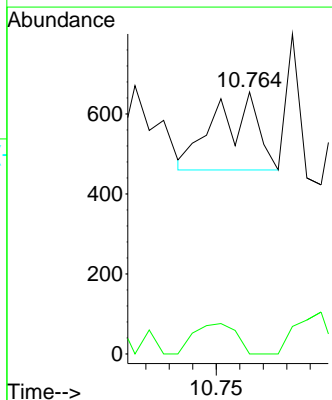
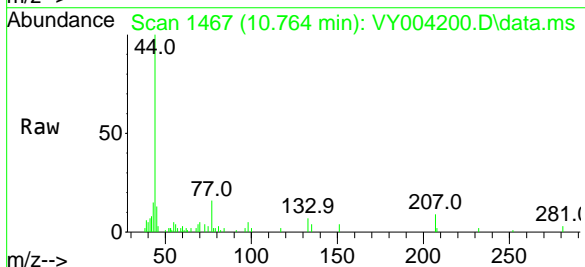
Instrument :
 MSVOA_Y
 ClientSampleId :
 PHC-326FB-003RE

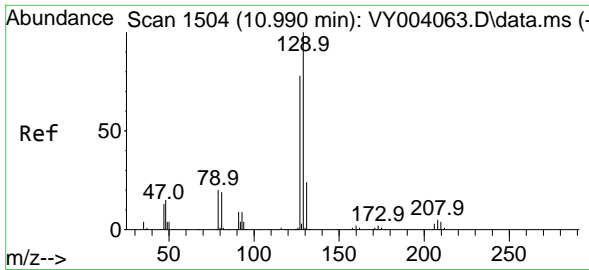
Tgt Ion: 63 Resp: 482
 Ion Ratio Lower Upper
 63 100
 106 0.0 22.1 33.1#



#59
 2-Hexanone
 Concen: 3201.78 ug/l
 RT: 10.764 min Scan# 1467
 Delta R.T. -0.073 min
 Lab File: VY004200.D
 Acq: 25 Mar 2021 13:57

Tgt Ion: 43 Resp: 238
 Ion Ratio Lower Upper
 43 100
 58 39.5 26.5 79.4

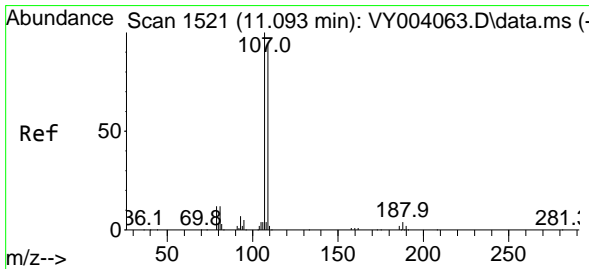
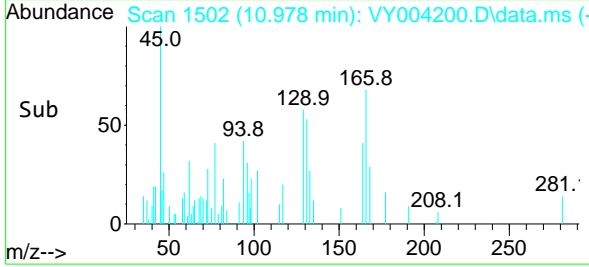
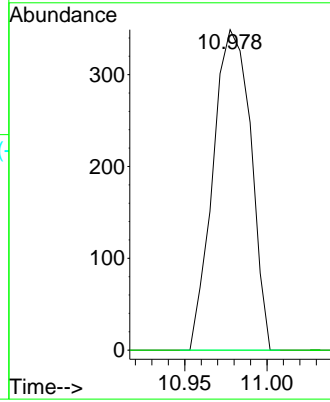
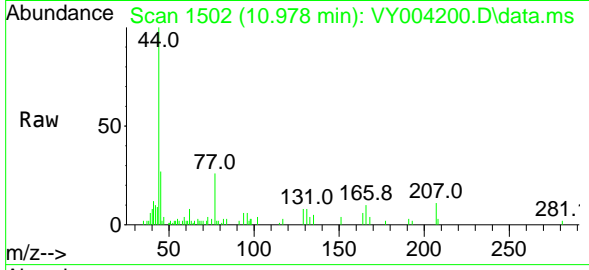




#60
 Dibromochloromethane
 Concen: 4073.85 ug/l
 RT: 10.978 min Scan# 1502
 Delta R.T. -0.012 min
 Lab File: VY004200.D
 Acq: 25 Mar 2021 13:57

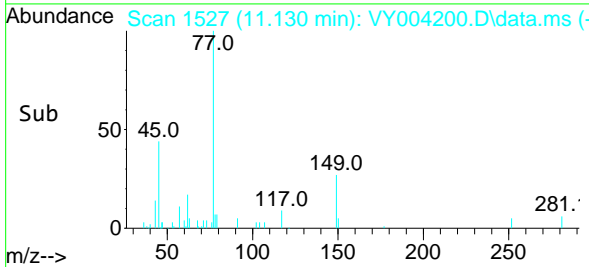
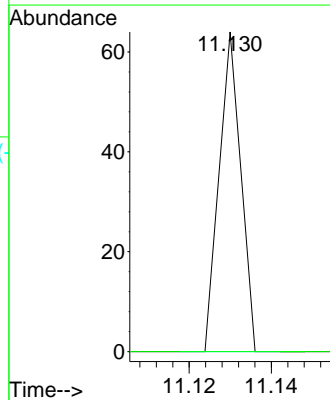
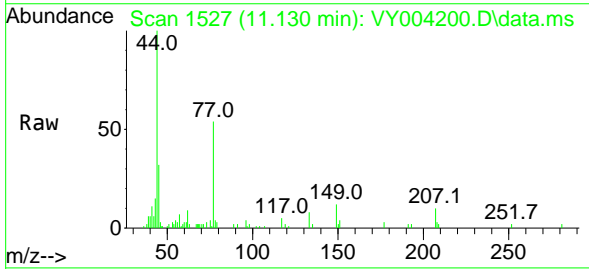
Instrument :
 MSVOA_Y
 ClientSampled :
 PHC-326FB-003RE

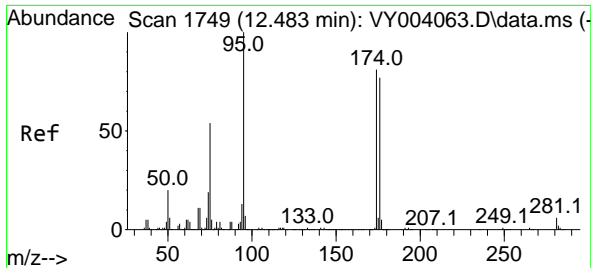
Tgt Ion:129 Resp: 559
 Ion Ratio Lower Upper
 129 100
 127 0.0 39.0 117.0#



#61
 1,2-Dibromoethane
 Concen: 216.11 ug/l
 RT: 11.130 min Scan# 1527
 Delta R.T. 0.037 min
 Lab File: VY004200.D
 Acq: 25 Mar 2021 13:57

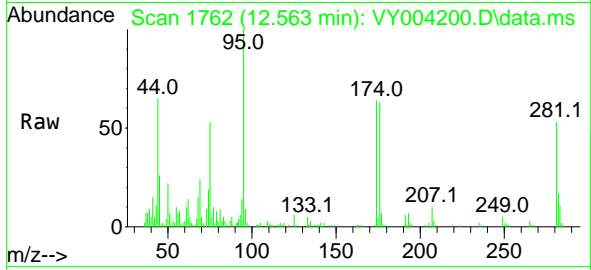
Tgt Ion:107 Resp: 23
 Ion Ratio Lower Upper
 107 100
 109 0.0 76.7 115.1#



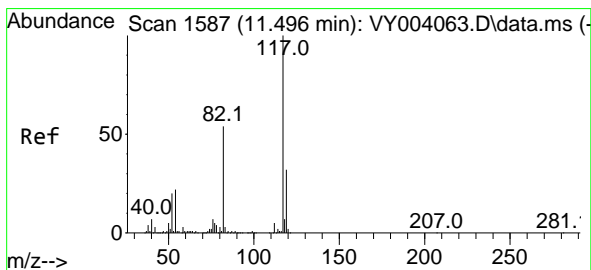
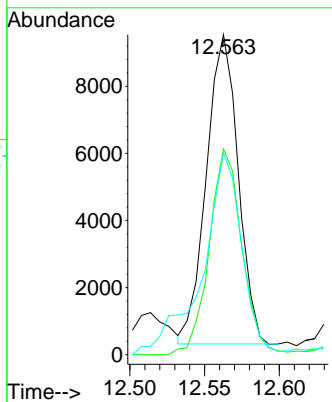
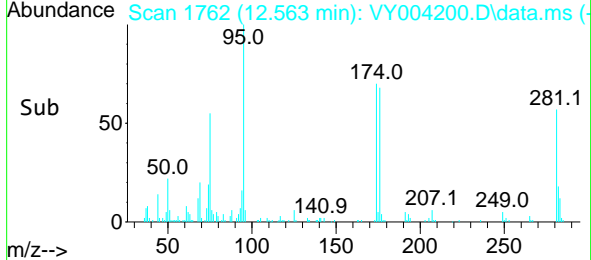


#62
 4-Bromofluorobenzene
 Concen: 75694.33 ug/l
 RT: 12.563 min Scan# 1762
 Delta R.T. 0.080 min
 Lab File: VY004200.D
 Acq: 25 Mar 2021 13:57

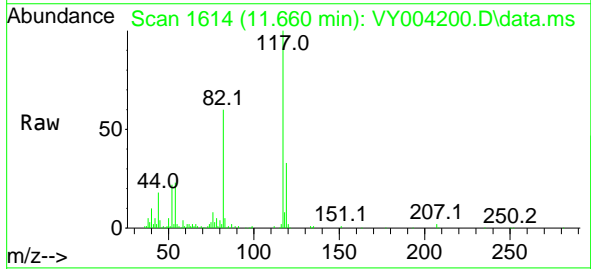
Instrument :
 MSVOA_Y
ClientSampled :
 PHC-326FB-003RE



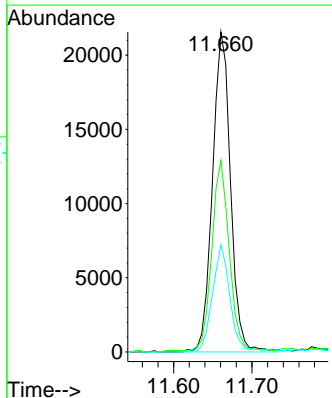
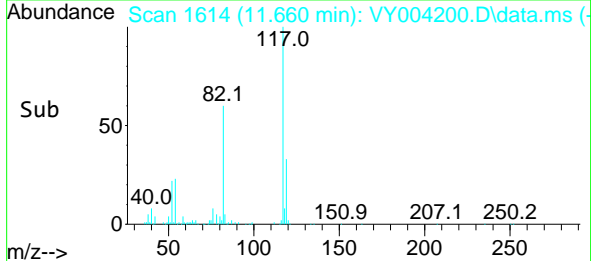
Tgt Ion: 95 Resp: 13597
 Ion Ratio Lower Upper
 95 100
 174 68.5 0.0 179.0
 176 81.4 0.0 174.4

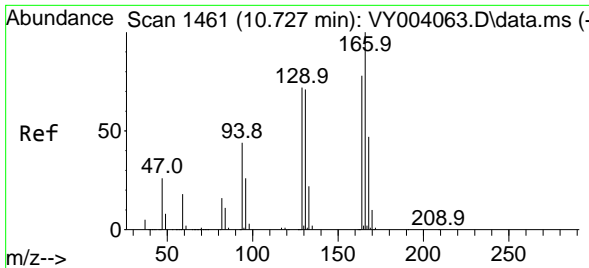


#63
 Chlorobenzene-d5
 Concen: 50.00 ug/l
 RT: 11.660 min Scan# 1614
 Delta R.T. 0.164 min
 Lab File: VY004200.D
 Acq: 25 Mar 2021 13:57



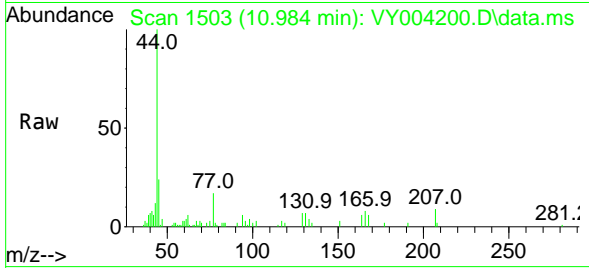
Tgt Ion: 117 Resp: 34528
 Ion Ratio Lower Upper
 117 100
 82 59.4 43.8 65.6
 119 33.4 26.2 39.2



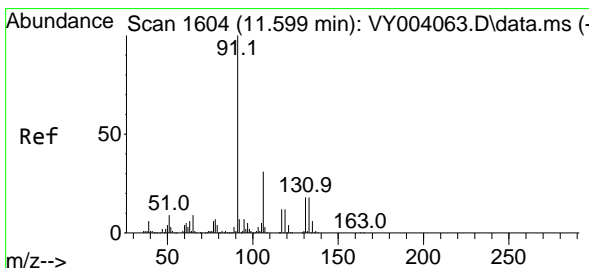
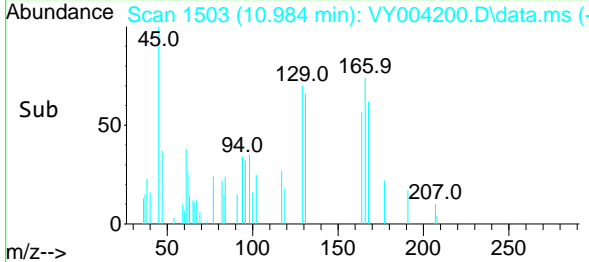
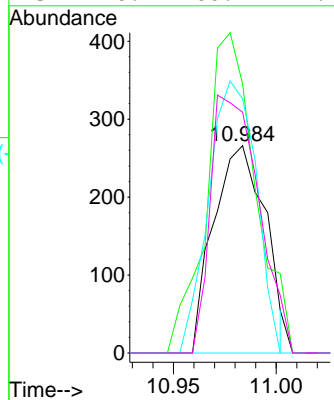


#64
 Tetrachloroethene
 Concen: 1.61 ug/l
 RT: 10.984 min Scan# 1503
 Delta R.T. 0.257 min
 Lab File: VY004200.D
 Acq: 25 Mar 2021 13:57

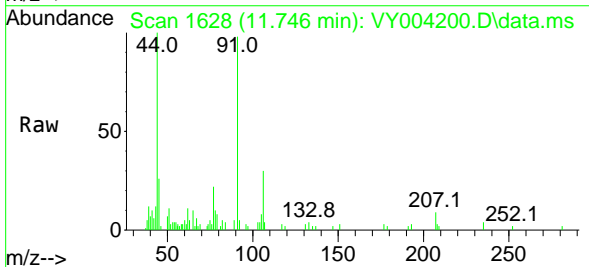
Instrument :
 MSVOA_Y
 ClientSampleId :
 PHC-326FB-003RE



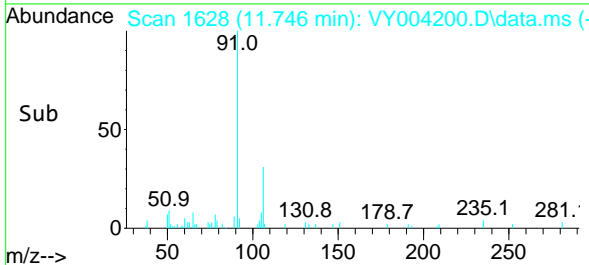
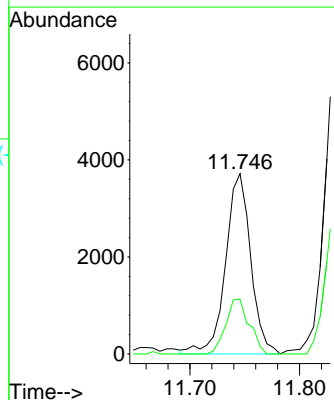
Tgt Ion:164 Resp: 465
 Ion Ratio Lower Upper
 164 100
 166 106.8 102.7 154.1
 129 122.6 70.6 105.8#
 131 116.2 66.2 99.2#

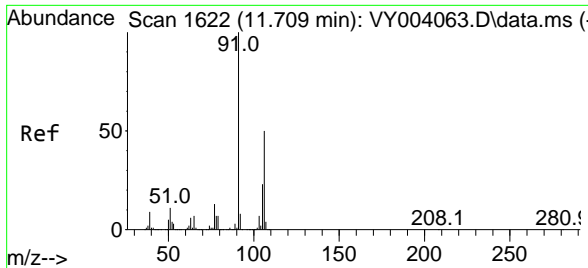


#67
 Ethyl Benzene
 Concen: 4.88 ug/l
 RT: 11.746 min Scan# 1628
 Delta R.T. 0.147 min
 Lab File: VY004200.D
 Acq: 25 Mar 2021 13:57



Tgt Ion: 91 Resp: 5927
 Ion Ratio Lower Upper
 91 100
 106 30.4 24.5 36.7

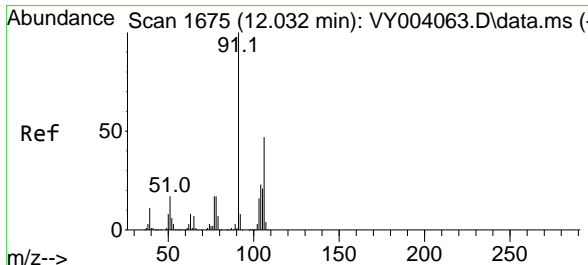
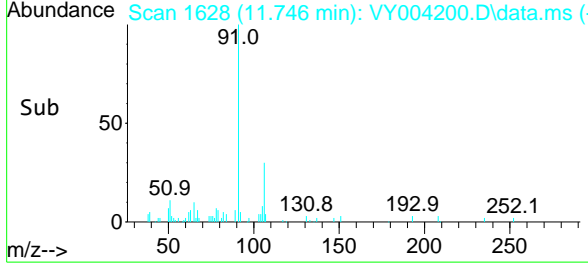
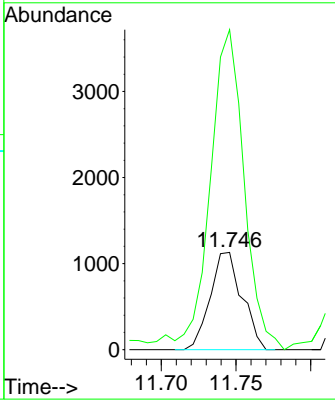
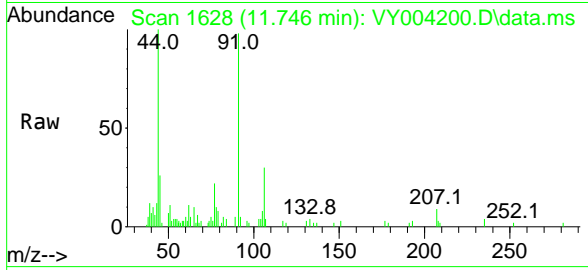




#68
 m/p-Xylenes
 Concen: 3.62 ug/l
 RT: 11.746 min Scan# 1628
 Delta R.T. 0.037 min
 Lab File: VY004200.D
 Acq: 25 Mar 2021 13:57

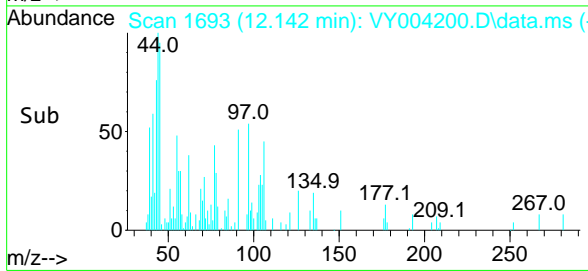
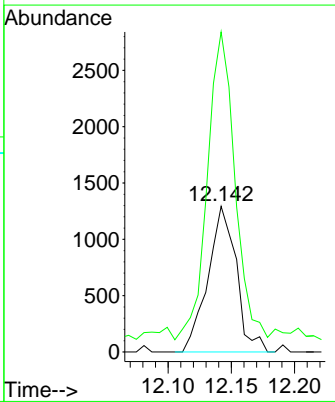
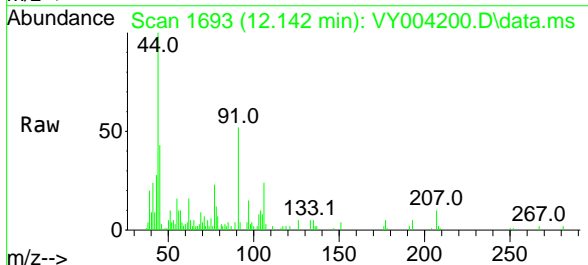
Instrument :
 MSVOA_Y
ClientSampled :
 PHC-326FB-003RE

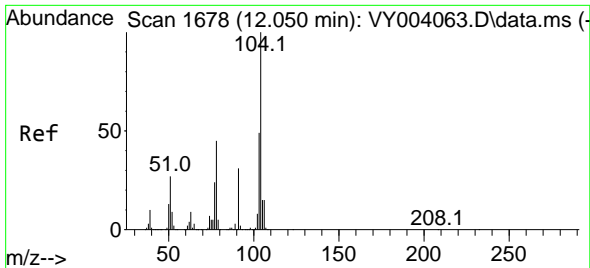
Tgt Ion:106 Resp: 1677
 Ion Ratio Lower Upper
 106 100
 91 353.4 165.4 248.0#



#69
 o-Xylene
 Concen: 4.61 ug/l
 RT: 12.142 min Scan# 1693
 Delta R.T. 0.110 min
 Lab File: VY004200.D
 Acq: 25 Mar 2021 13:57

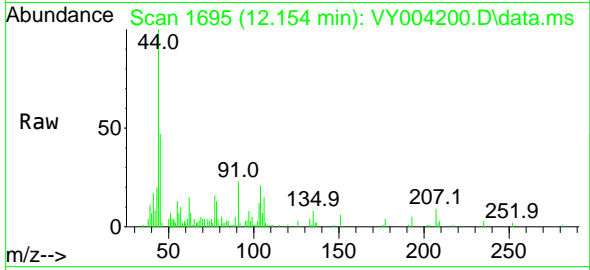
Tgt Ion:106 Resp: 2019
 Ion Ratio Lower Upper
 106 100
 91 206.9 108.9 326.7





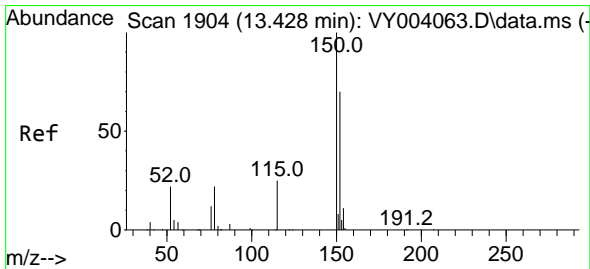
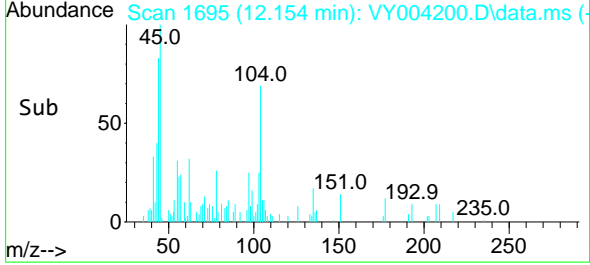
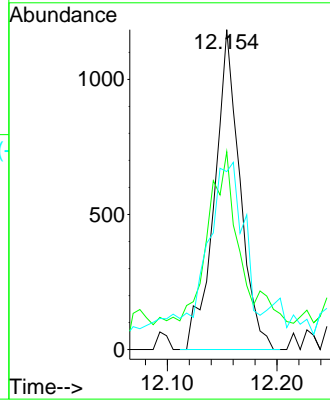
#70
 Styrene
 Concen: 2.55 ug/l
 RT: 12.154 min Scan# 1695
 Delta R.T. 0.104 min
 Lab File: VY004200.D
 Acq: 25 Mar 2021 13:57

Instrument :
 MSVOA_Y
 ClientSampled :
 PHC-326FB-003RE

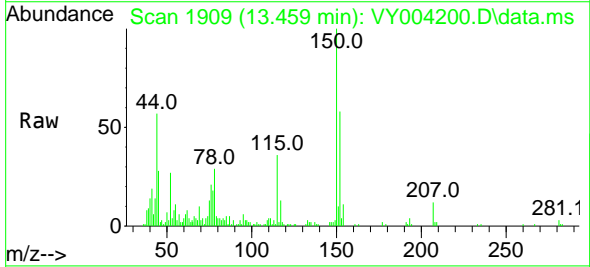


Tgt Ion:104 Resp: 1910

Ion	Ratio	Lower	Upper
104	100		
78	70.9	41.1	61.7#
103	67.8	43.9	65.9#

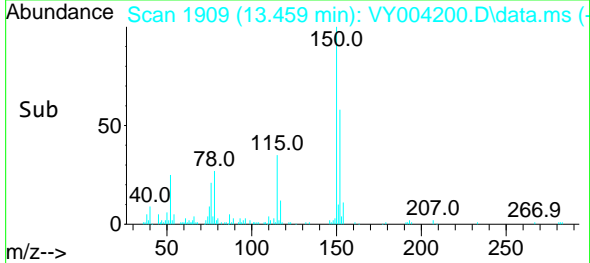
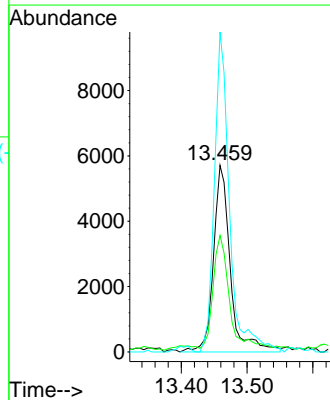


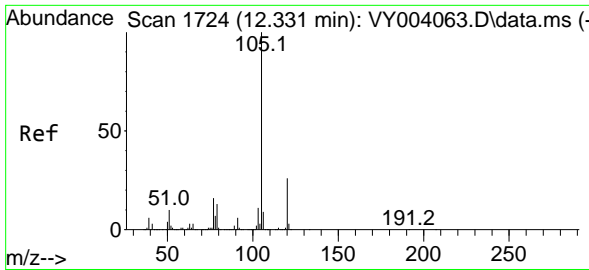
#72
 1,4-Dichlorobenzene-d4
 Concen: 50.00 ug/l
 RT: 13.459 min Scan# 1909
 Delta R.T. 0.031 min
 Lab File: VY004200.D
 Acq: 25 Mar 2021 13:57



Tgt Ion:152 Resp: 10200

Ion	Ratio	Lower	Upper
152	100		
115	57.5	28.2	84.6
150	154.0	0.0	347.2

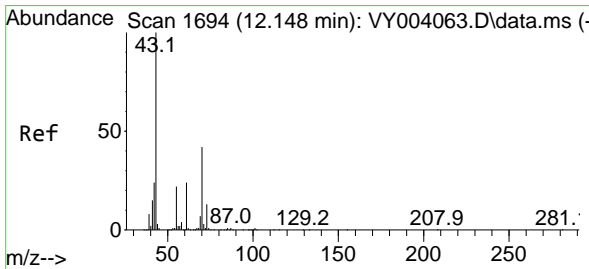
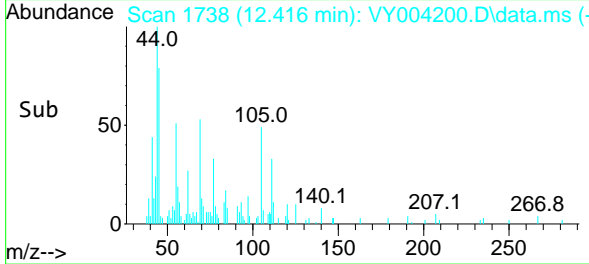
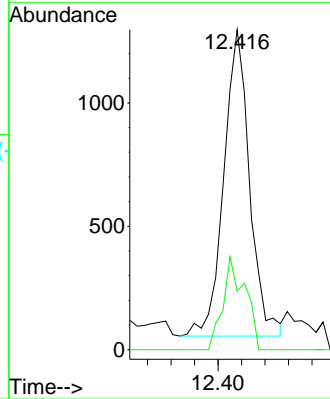
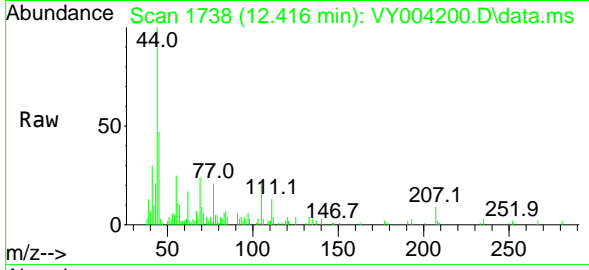




#73
 Isopropylbenzene
 Concen: 2.66 ug/l
 RT: 12.416 min Scan# 1738
 Delta R.T. 0.085 min
 Lab File: VY004200.D
 Acq: 25 Mar 2021 13:57

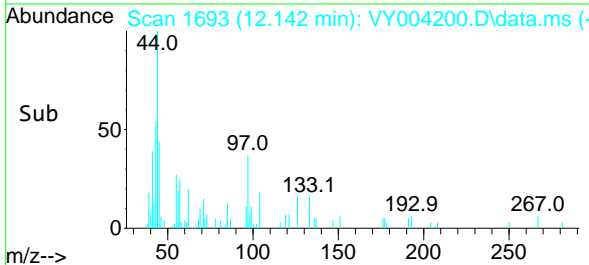
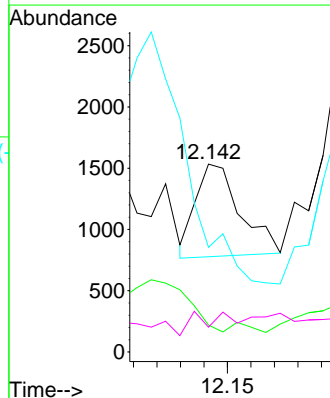
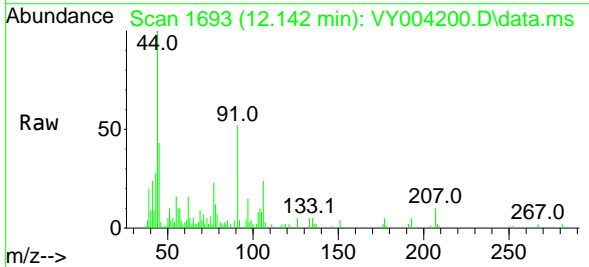
Instrument :
 MSVOA_Y
 ClientSampled :
 PHC-326FB-003RE

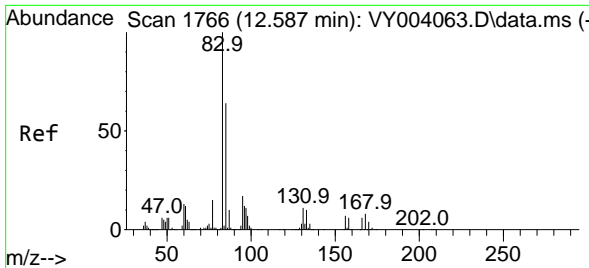
Tgt Ion:105 Resp: 1888
 Ion Ratio Lower Upper
 105 100
 120 26.0 13.3 39.9



#74
 N-ethyl acetate
 Concen: 4.91 ug/l
 RT: 12.142 min Scan# 1693
 Delta R.T. -0.006 min
 Lab File: VY004200.D
 Acq: 25 Mar 2021 13:57

Tgt Ion: 43 Resp: 997
 Ion Ratio Lower Upper
 43 100
 70 0.0 32.3 48.5#
 55 0.0 18.4 27.6#
 61 20.5 19.0 28.4

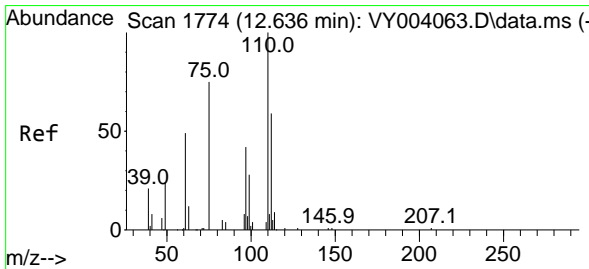
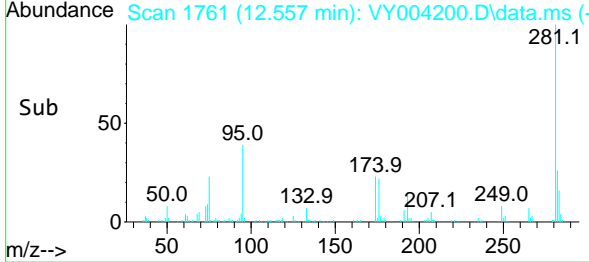
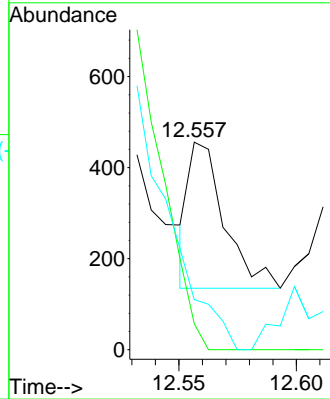
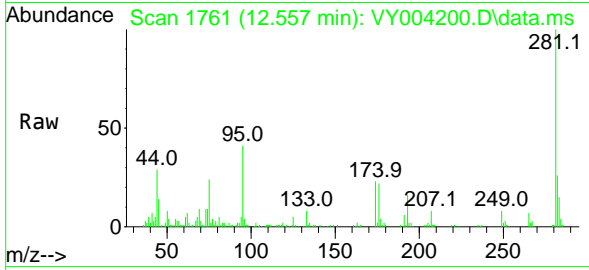




#75
 1,1,2,2-Tetrachloroethane
 Concen: 2.75 ug/l
 RT: 12.557 min Scan# 1761
 Delta R.T. -0.030 min
 Lab File: VY004200.D
 Acq: 25 Mar 2021 13:57

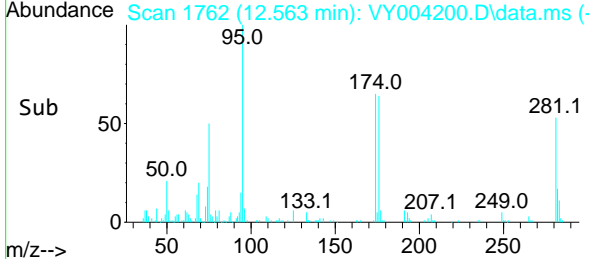
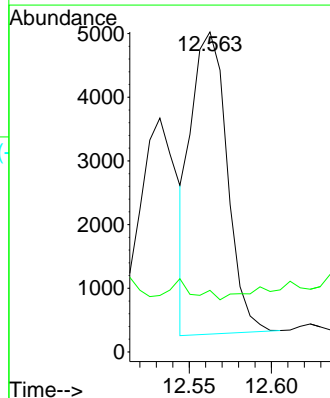
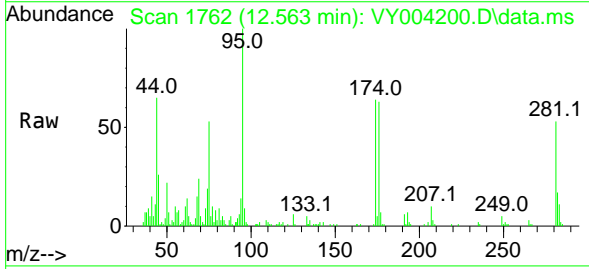
Instrument :
 MSVOA_Y
Client Sampled :
 PHC-326FB-003RE

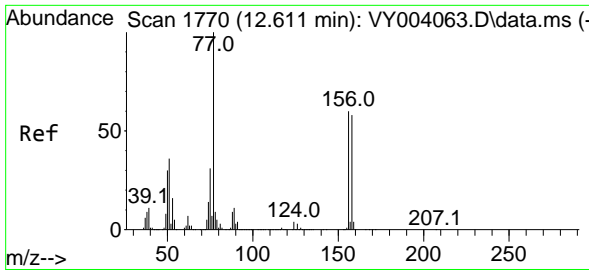
Tgt Ion	Resp	Lower	Upper
83	100		
131	0.0	5.5	16.4#
85	0.0	31.6	95.0#



#76
 1,2,3-Trichloropropane
 Concen: 73.56 ug/l
 RT: 12.563 min Scan# 1762
 Delta R.T. -0.073 min
 Lab File: VY004200.D
 Acq: 25 Mar 2021 13:57

Tgt Ion	Resp	Lower	Upper
75	100		
77	0.0	0.0	0.0

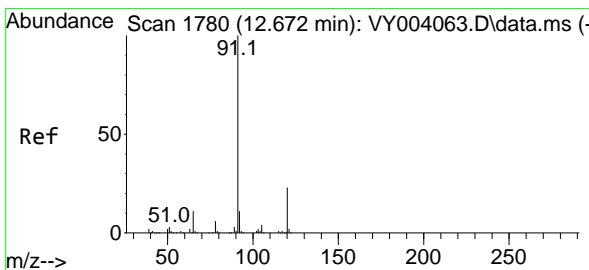
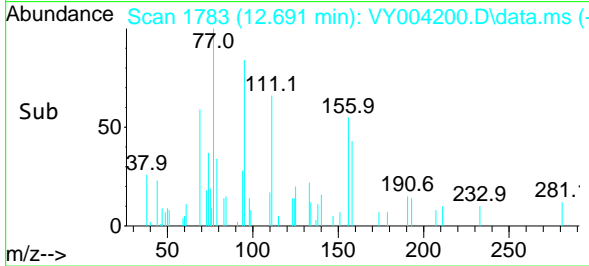
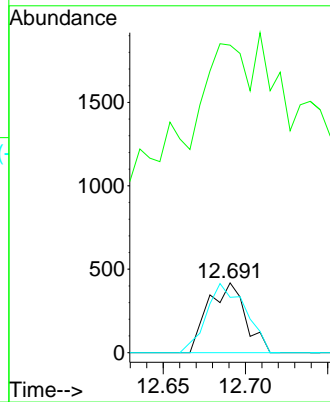
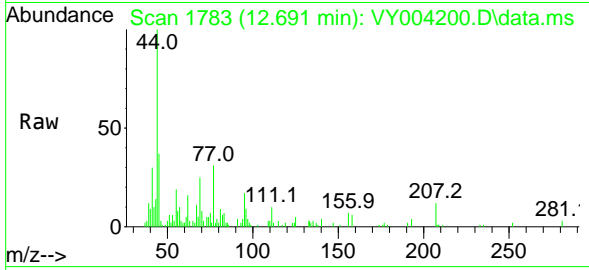




#77
 Bromobenzene
 Concen: 3.99 ug/l
 RT: 12.691 min Scan# 1783
 Delta R.T. 0.080 min
 Lab File: VY004200.D
 Acq: 25 Mar 2021 13:57

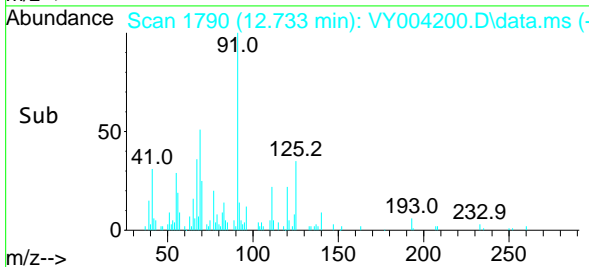
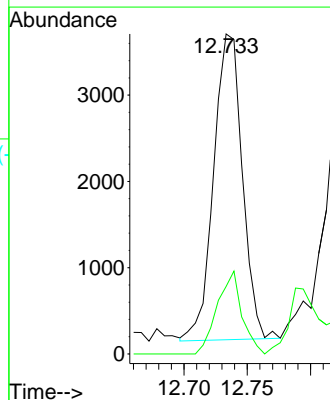
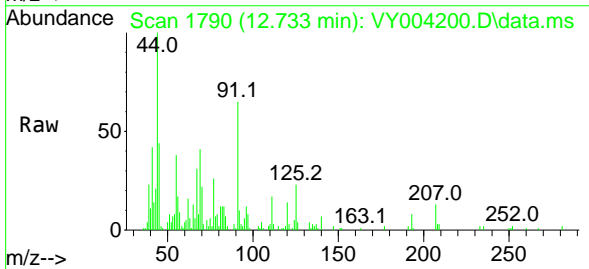
Instrument :
 MSVOA_Y
 ClientSampled :
 PHC-326FB-003RE

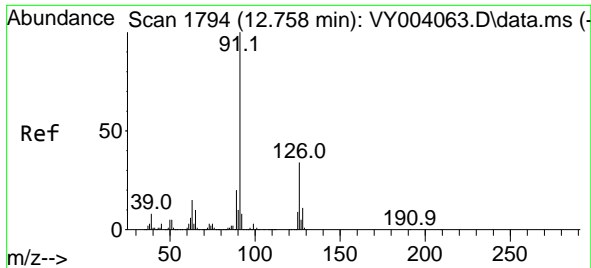
Tgt Ion	Resp	Lower	Upper
156	100		
77	328.6	90.5	271.3#
158	105.0	48.9	146.6



#78
 n-propylbenzene
 Concen: 6.70 ug/l
 RT: 12.733 min Scan# 1790
 Delta R.T. 0.061 min
 Lab File: VY004200.D
 Acq: 25 Mar 2021 13:57

Tgt Ion	Resp	Lower	Upper
91	100		
120	23.2	11.3	33.9

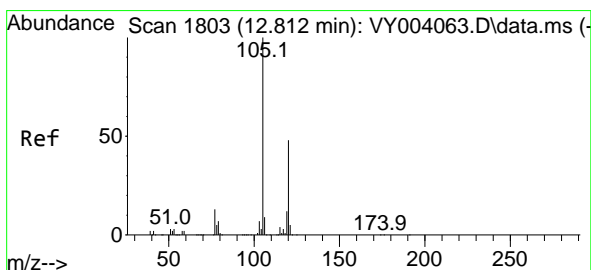
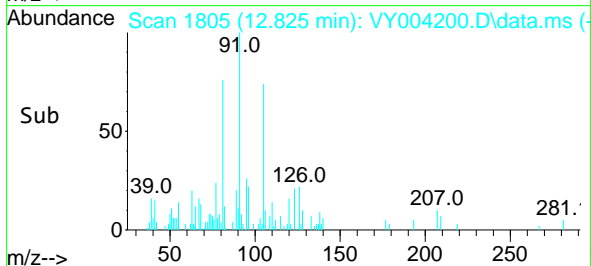
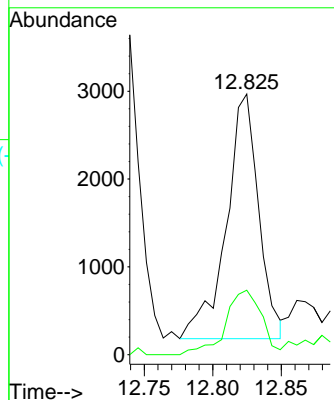
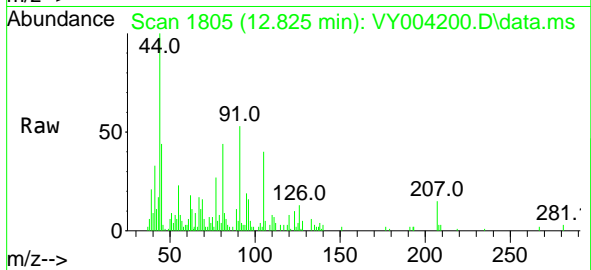




#79
 2-Chlorotoluene
 Concen: 9.79 ug/l
 RT: 12.825 min Scan# 1805
 Delta R.T. 0.067 min
 Lab File: VY004200.D
 Acq: 25 Mar 2021 13:57

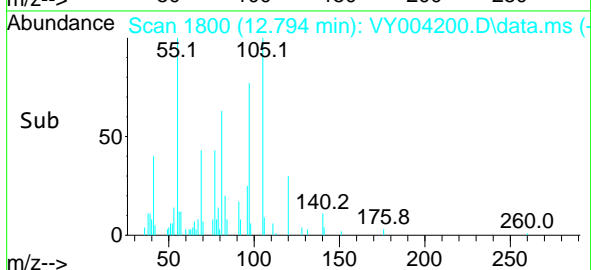
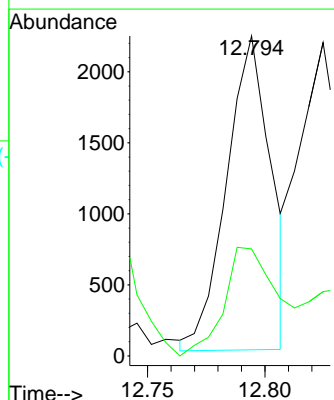
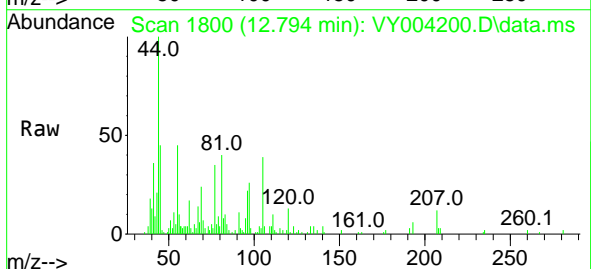
Instrument :
 MSVOA_Y
 ClientSampled :
 PHC-326FB-003RE

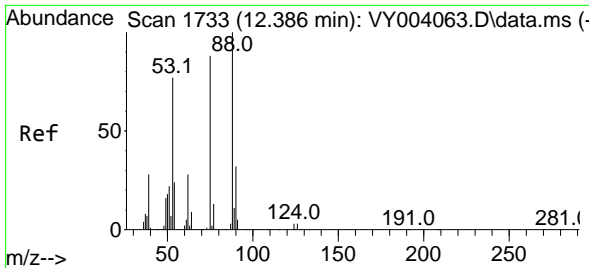
Tgt Ion: 91 Resp: 4589
 Ion Ratio Lower Upper
 91 100
 126 29.2 17.0 51.0



#80
 1,3,5-Trimethylbenzene
 Concen: 4.83 ug/l
 RT: 12.794 min Scan# 1800
 Delta R.T. -0.018 min
 Lab File: VY004200.D
 Acq: 25 Mar 2021 13:57

Tgt Ion: 105 Resp: 2903
 Ion Ratio Lower Upper
 105 100
 120 42.0 24.1 72.2

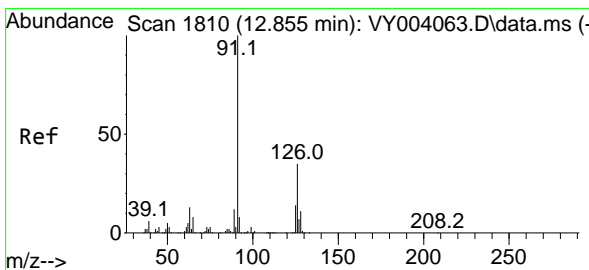
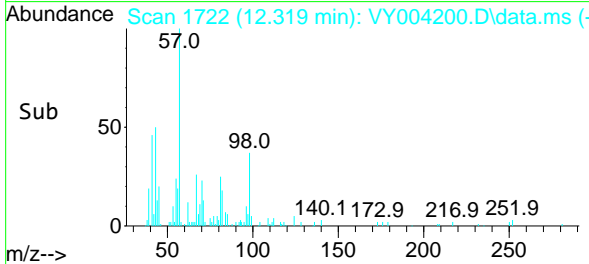
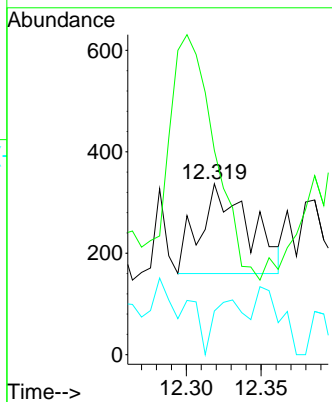
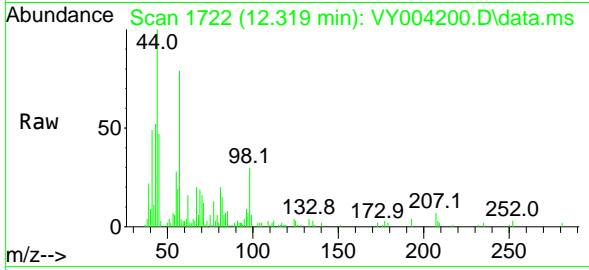




#81
 trans-1,4-Dichloro-2-butene
 Concen: 8.13 ug/l
 RT: 12.319 min Scan# 1722
 Delta R.T. -0.067 min
 Lab File: VY004200.D
 Acq: 25 Mar 2021 13:57

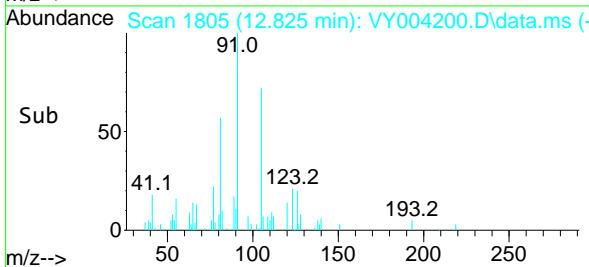
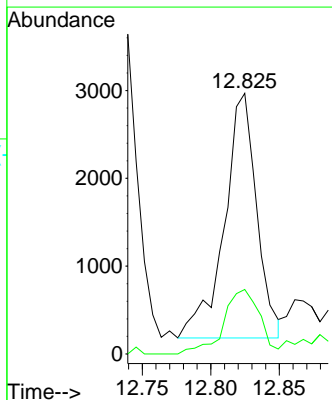
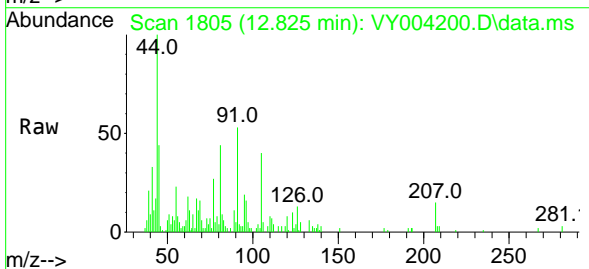
Instrument :
 MSVOA_Y
ClientSampled :
 PHC-326FB-003RE

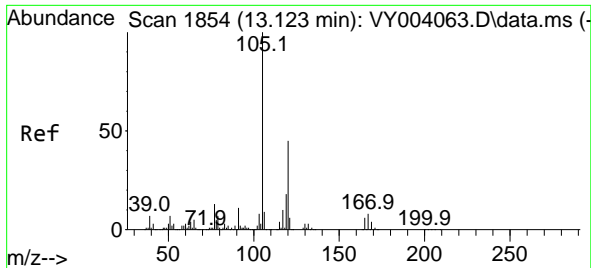
Tgt Ion	Resp	Lower	Upper
75	403		
75	100		
53	0.0	73.5	110.3#
89	40.7	35.7	53.5



#82
 4-Chlorotoluene
 Concen: 9.25 ug/l
 RT: 12.825 min Scan# 1805
 Delta R.T. -0.030 min
 Lab File: VY004200.D
 Acq: 25 Mar 2021 13:57

Tgt Ion	Resp	Lower	Upper
91	4589		
91	100		
126	29.2	16.8	50.4

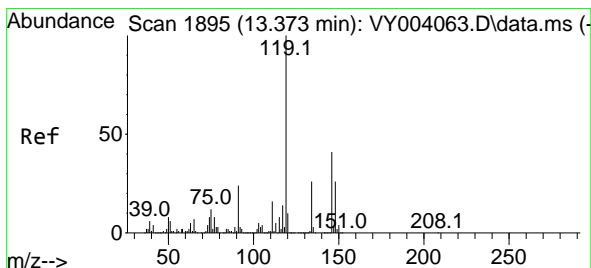
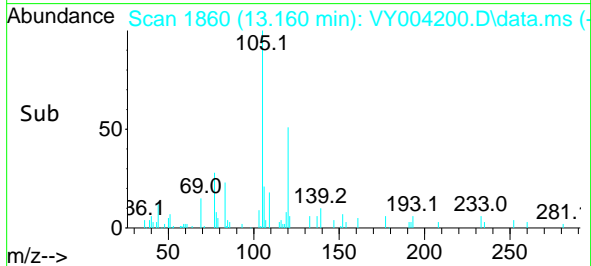
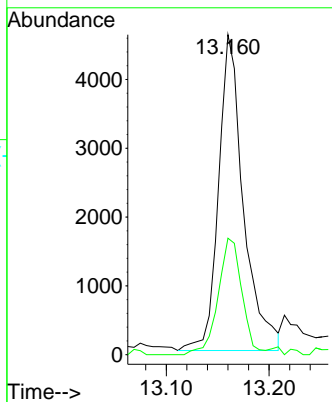
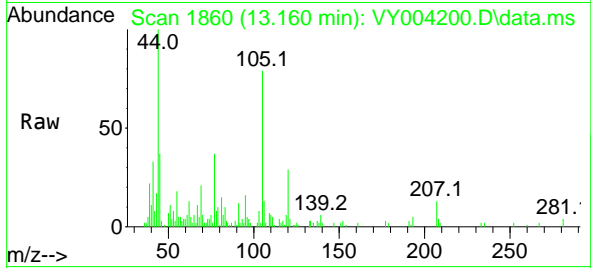




#84
 1,2,4-Trimethylbenzene
 Concen: 12.82 ug/l
 RT: 13.160 min Scan# 1860
 Delta R.T. 0.037 min
 Lab File: VY004200.D
 Acq: 25 Mar 2021 13:57

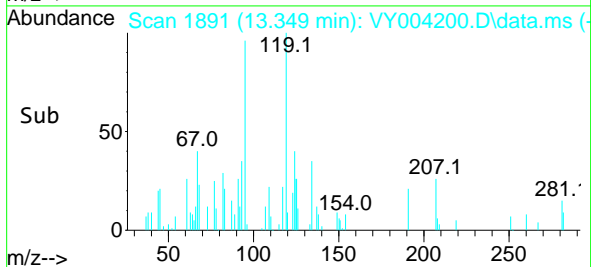
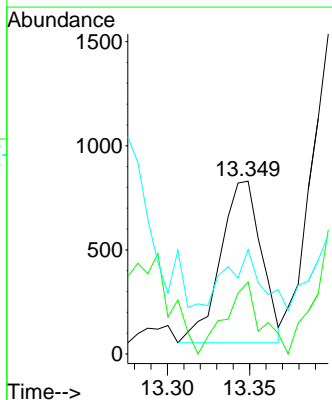
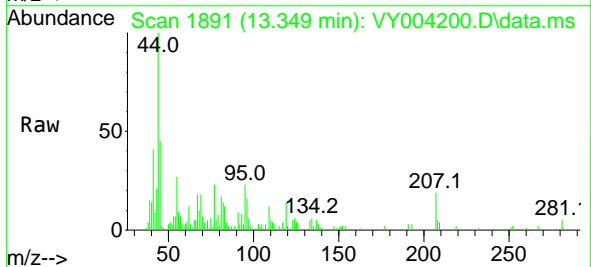
Instrument :
 MSVOA_Y
 ClientSampled :
 PHC-326FB-003RE

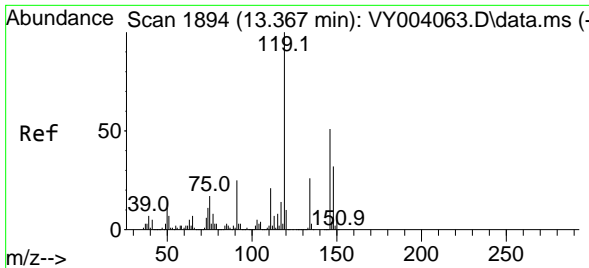
Tgt Ion:105 Resp: 7717
 Ion Ratio Lower Upper
 105 100
 120 35.2 22.1 66.3



#86
 p-Isopropyltoluene
 Concen: 2.03 ug/l
 RT: 13.349 min Scan# 1891
 Delta R.T. -0.024 min
 Lab File: VY004200.D
 Acq: 25 Mar 2021 13:57

Tgt Ion:119 Resp: 1341
 Ion Ratio Lower Upper
 119 100
 134 38.4 13.2 39.5
 91 32.8 12.1 36.3

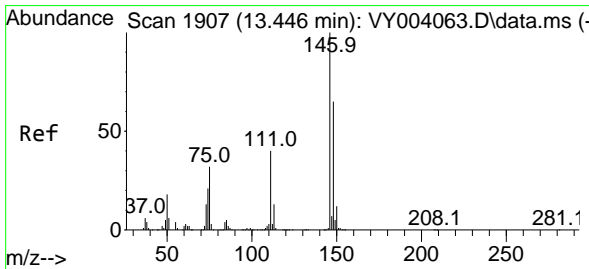
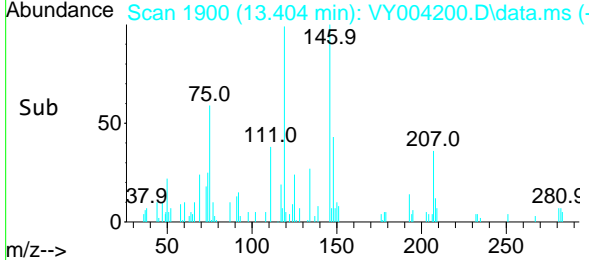
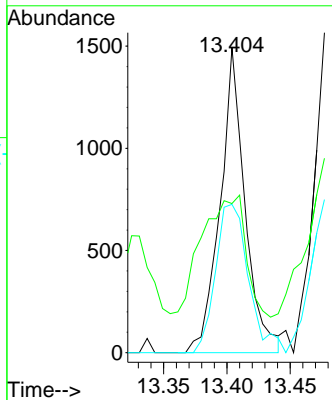
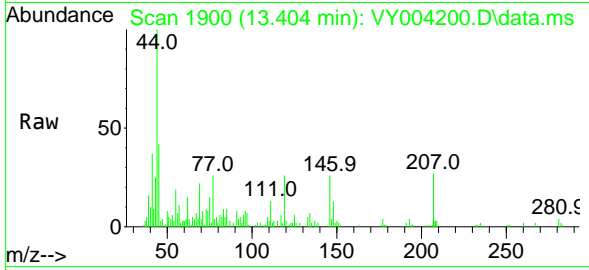




#87
 1,3-Dichlorobenzene
 Concen: 6.47 ug/l
 RT: 13.404 min Scan# 1900
 Delta R.T. 0.037 min
 Lab File: VY004200.D
 Acq: 25 Mar 2021 13:57

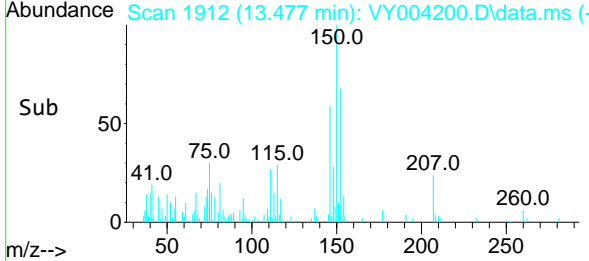
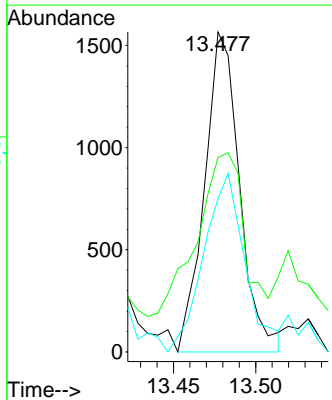
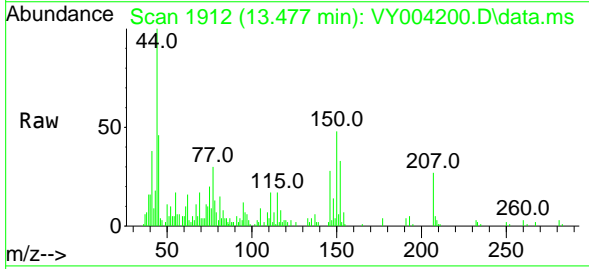
Instrument :
 MSVOA_Y
 ClientSampleId :
 PHC-326FB-003RE

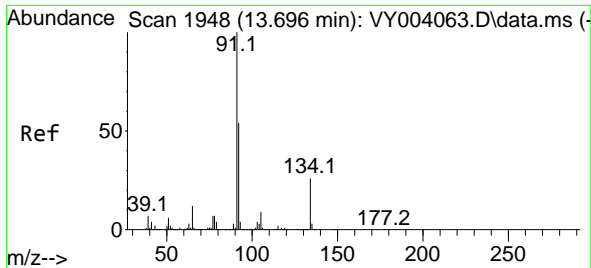
Tgt Ion	Resp	Lower	Upper
146	100		
111	69.6	18.9	56.7#
148	64.4	31.9	95.9



#88
 1,4-Dichlorobenzene
 Concen: 7.36 ug/l
 RT: 13.477 min Scan# 1912
 Delta R.T. 0.031 min
 Lab File: VY004200.D
 Acq: 25 Mar 2021 13:57

Tgt Ion	Resp	Lower	Upper
146	100		
111	73.9	18.6	55.8#
148	65.3	31.8	95.4



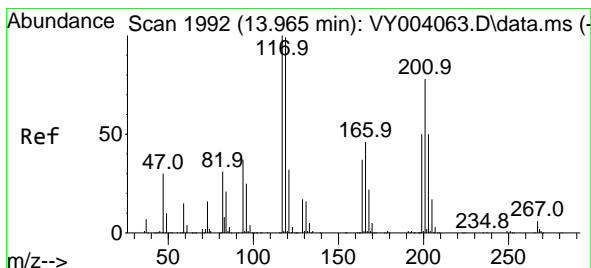
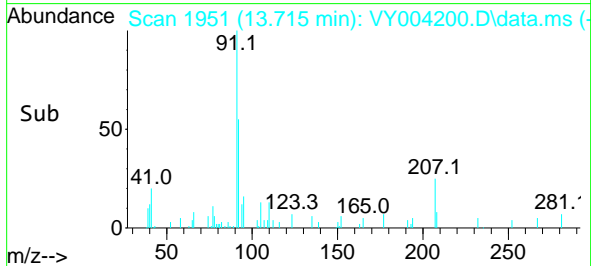
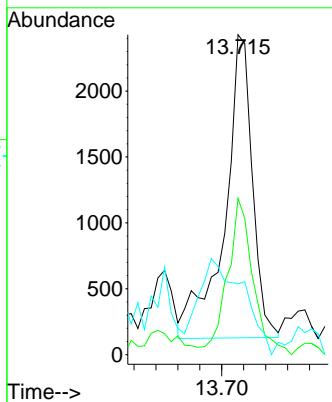
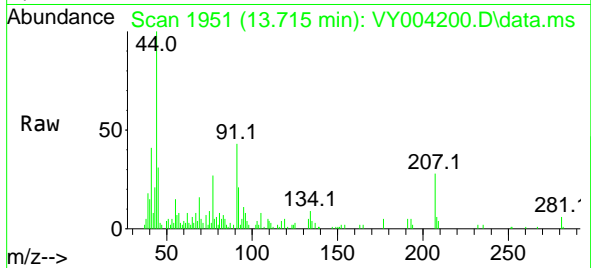


#89
 n-Butylbenzene
 Concen: 6.42 ug/l
 RT: 13.715 min Scan# 1951
 Delta R.T. 0.019 min
 Lab File: VY004200.D
 Acq: 25 Mar 2021 13:57

Instrument :
 MSVOA_Y
 ClientSampleId :
 PHC-326FB-003RE

Tgt Ion: 91 Resp: 4038

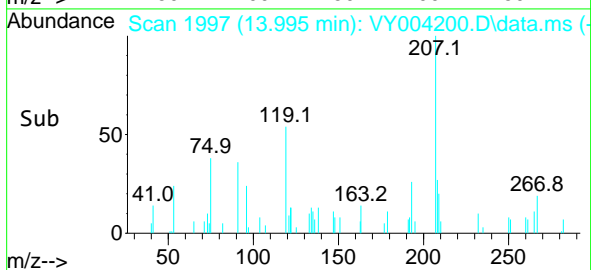
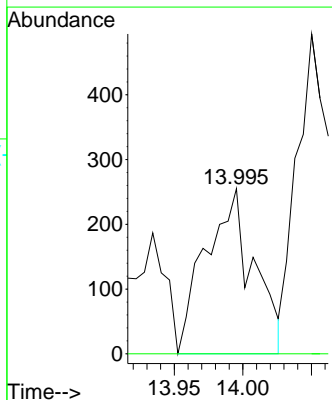
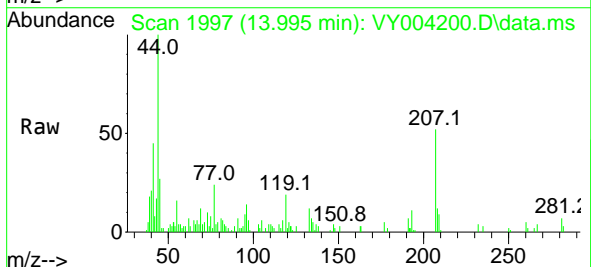
Ion	Ratio	Lower	Upper
91	100		
92	47.5	26.5	79.4
134	0.0	13.2	39.5#

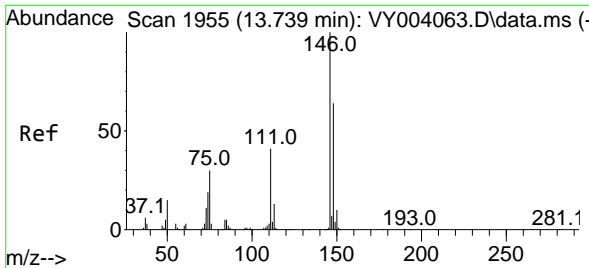


#90
 Hexachloroethane
 Concen: 5.20 ug/l
 RT: 13.995 min Scan# 1997
 Delta R.T. 0.030 min
 Lab File: VY004200.D
 Acq: 25 Mar 2021 13:57

Tgt Ion: 117 Resp: 618

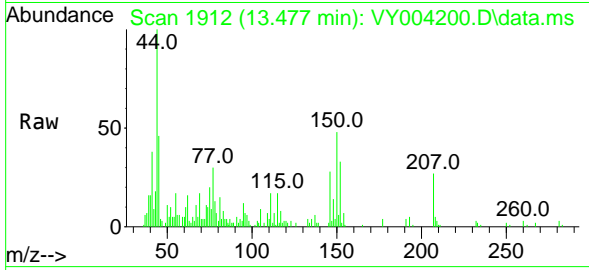
Ion	Ratio	Lower	Upper
117	100		
201	0.0	46.0	138.0#



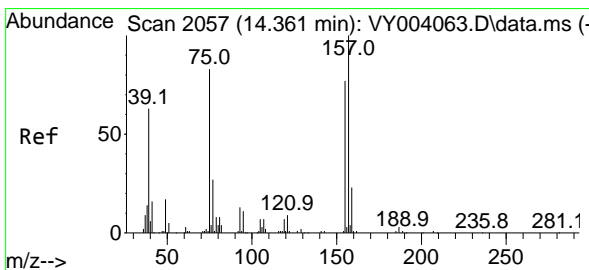
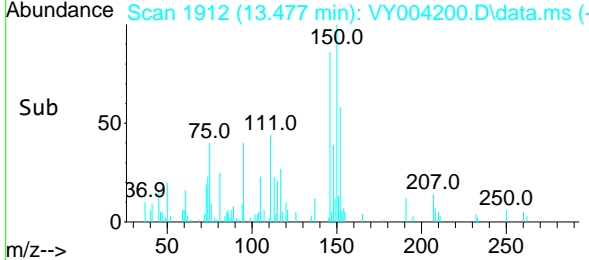
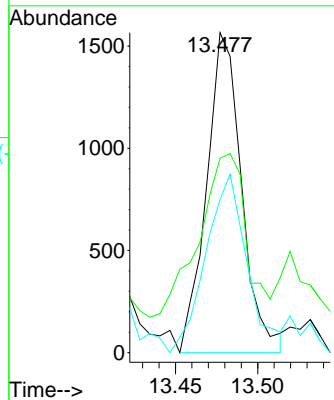


#91
 1,2-Dichlorobenzene
 Concen: 8.28 ug/l
 RT: 13.477 min Scan# 1912
 Delta R.T. -0.262 min
 Lab File: VY004200.D
 Acq: 25 Mar 2021 13:57

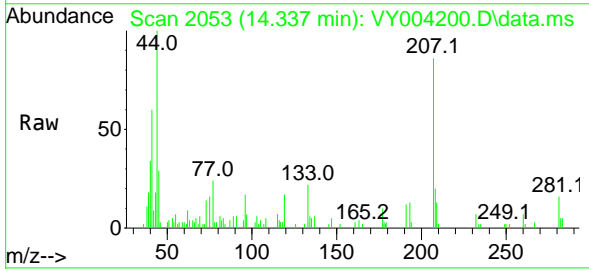
Instrument :
 MSVOA_Y
 ClientSampleId :
 PHC-326FB-003RE



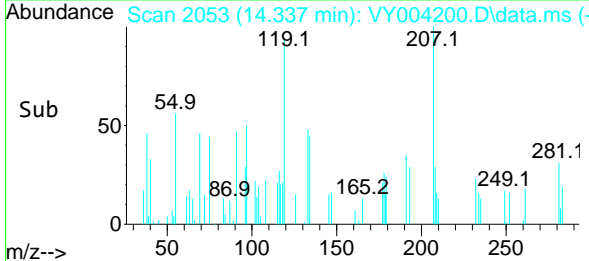
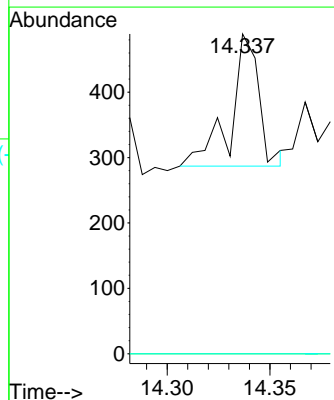
Tgt Ion:146 Resp: 2321
 Ion Ratio Lower Upper
 146 100
 111 49.5 19.6 58.8
 148 52.1 31.9 95.7

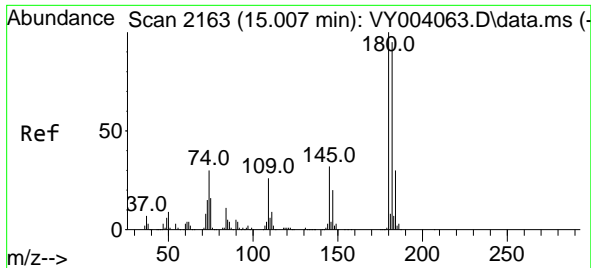


#92
 1,2-Dibromo-3-Chloropropane
 Concen: 8.34 ug/l
 RT: 14.337 min Scan# 2053
 Delta R.T. -0.024 min
 Lab File: VY004200.D
 Acq: 25 Mar 2021 13:57



Tgt Ion: 75 Resp: 194
 Ion Ratio Lower Upper
 75 100
 155 0.0 42.8 128.4#
 157 0.0 52.4 157.3#

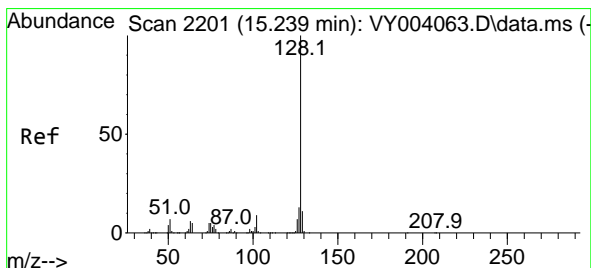
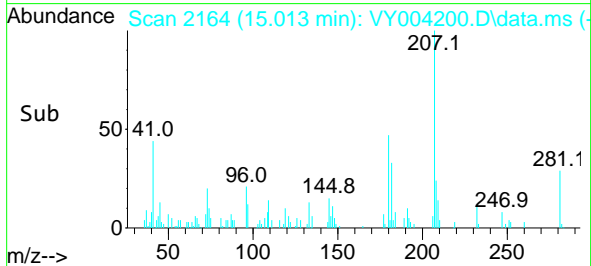
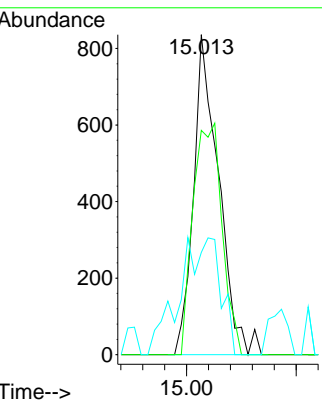
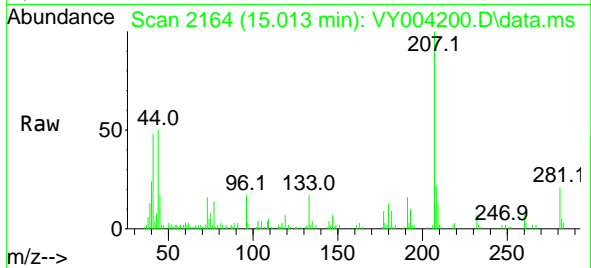




#93
 1,2,4-Trichlorobenzene
 Concen: 7.00 ug/l
 RT: 15.013 min Scan# 2164
 Delta R.T. 0.006 min
 Lab File: VY004200.D
 Acq: 25 Mar 2021 13:57

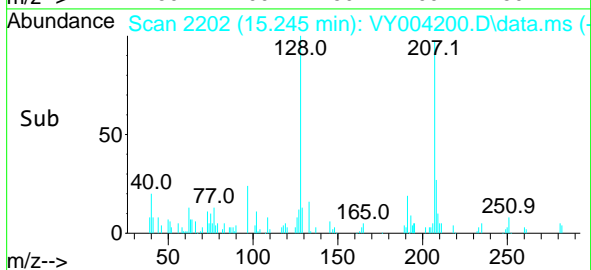
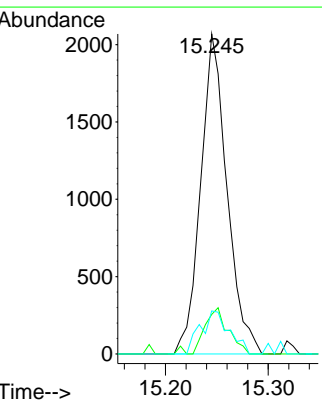
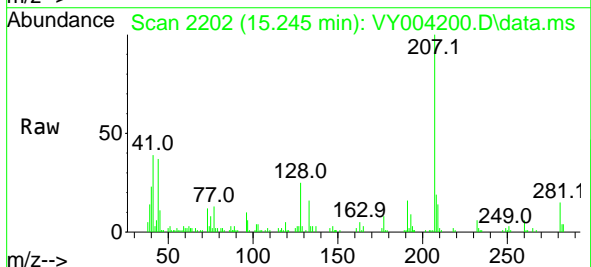
Instrument :
 MSVOA_Y
 ClientSampled :
 PHC-326FB-003RE

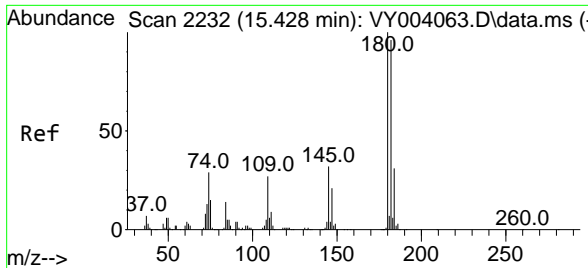
Tgt Ion	Resp	Lower	Upper
180	100		
182	83.4	48.0	144.0
145	0.0	14.1	42.2#



#95
 Naphthalene
 Concen: 9.77 ug/l
 RT: 15.245 min Scan# 2202
 Delta R.T. 0.006 min
 Lab File: VY004200.D
 Acq: 25 Mar 2021 13:57

Tgt Ion	Resp	Lower	Upper
128	100		
127	12.6	10.6	16.0
129	14.7	8.7	13.1#





#96
 1,2,3-Trichlorobenzene
 Concen: 5.13 ug/l
 RT: 15.428 min Scan# 2232
 Delta R.T. -0.000 min
 Lab File: VY004200.D
 Acq: 25 Mar 2021 13:57

Instrument :
 MSVOA_Y
 ClientSampled :
 PHC-326FB-003RE

Tgt Ion:180 Resp: 820

Ion	Ratio	Lower	Upper
180	100		
182	81.3	47.6	142.8
145	38.4	15.3	45.9

