

Data Path : Z:\voasrv\HPCHEM1\MSVOA\_Y\Data\VY032723\  
 Data File : VY013100.D  
 Acq On : 27 Mar 2023 18:28  
 Operator : KP/MD  
 Sample : 02111-03  
 Misc : 5.05g/5.0mL/MSVOA\_Y/SOIL  
 ALS Vial : 18 Sample Multiplier: 1

Instrument :  
 MSVOA\_Y  
 ClientSampleId :  
 APCS-NORTH

Quant Time: Mar 28 01:47:30 2023  
 Quant Method : Z:\voasrv\HPCHEM1\MSVOA\_Y\methods\82Y030223S.M  
 Quant Title : SW846 8260  
 QLast Update : Fri Mar 03 01:13:13 2023  
 Response via : Initial Calibration

Compound	R.T.	QIon	Response	Conc	Units	Dev(Min)
-----						
Internal Standards						
1) Pentafluorobenzene	7.782	168	1543	50.000	ug/l	0.00
34) 1,4-Difluorobenzene	8.685	114	2567	50.000	ug/l	0.00
63) Chlorobenzene-d5	11.495	117	2609	50.000	ug/l	0.00
72) 1,4-Dichlorobenzene-d4	13.422	152	744	50.000	ug/l	0.00

System Monitoring Compounds						
33) 1,2-Dichloroethane-d4	8.136	65	1654	107.964	ug/l	0.00
Spiked Amount	50.000	Range	50 - 163	Recovery	=	215.920%#
35) Dibromofluoromethane	7.709	113	1135	73.265	ug/l	0.00
Spiked Amount	50.000	Range	54 - 147	Recovery	=	146.520%
50) Toluene-d8	10.172	98	3120	55.090	ug/l	0.00
Spiked Amount	50.000	Range	49 - 140	Recovery	=	110.180%
62) 4-Bromofluorobenzene	12.483	95	925	48.390	ug/l	0.00
Spiked Amount	50.000	Range	25 - 144	Recovery	=	96.780%

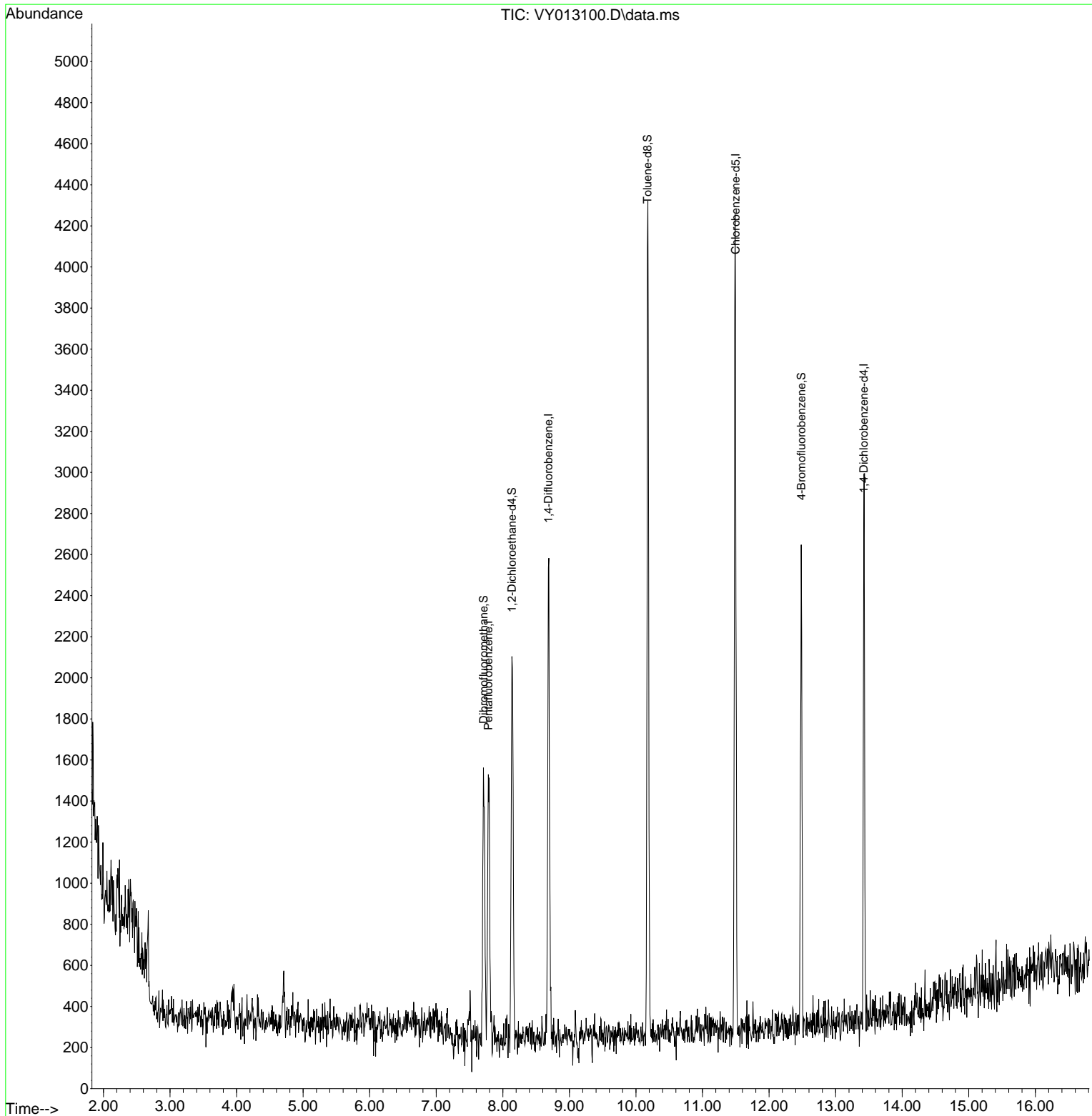
Target Compounds Qvalue  
 -----

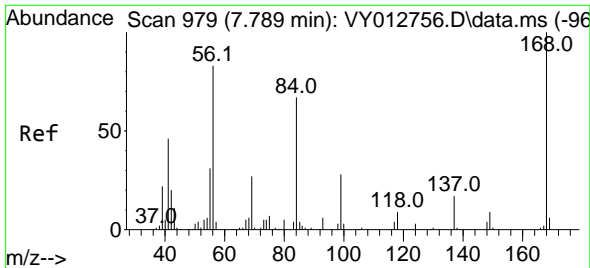
(#) = qualifier out of range (m) = manual integration (+) = signals summed

Data Path : Z:\voasrv\HPCHEM1\MSVOA\_Y\Data\VY032723\  
 Data File : VY013100.D  
 Acq On : 27 Mar 2023 18:28  
 Operator : KP/MD  
 Sample : 02111-03  
 Misc : 5.05g/5.0mL/MSVOA\_Y/SOIL  
 ALS Vial : 18 Sample Multiplier: 1

Instrument :  
 MSVOA\_Y  
 ClientSampleId :  
 APCS-NORTH

Quant Time: Mar 28 01:47:30 2023  
 Quant Method : Z:\voasrv\HPCHEM1\MSVOA\_Y\methods\82Y030223S.M  
 Quant Title : SW846 8260  
 QLast Update : Fri Mar 03 01:13:13 2023  
 Response via : Initial Calibration

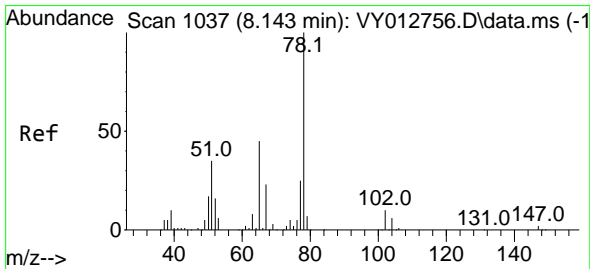
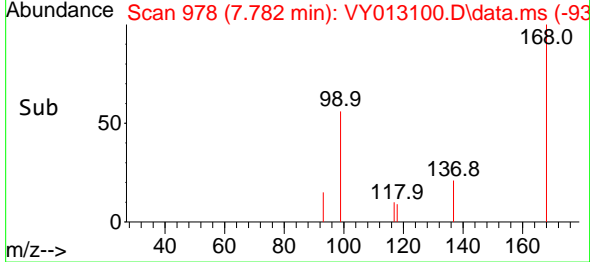
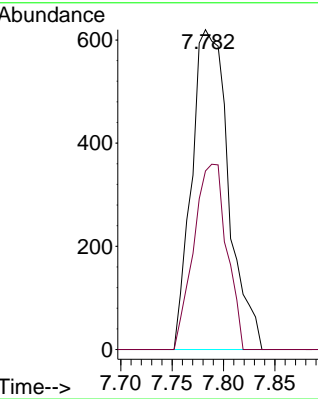
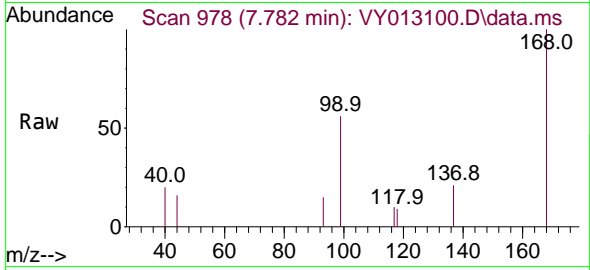




#1  
 Pentafluorobenzene  
 Concen: 50.000 ug/l  
 RT: 7.782 min Scan# 91  
 Delta R.T. -0.007 min  
 Lab File: VY013100.D  
 Acq: 27 Mar 2023 18:28

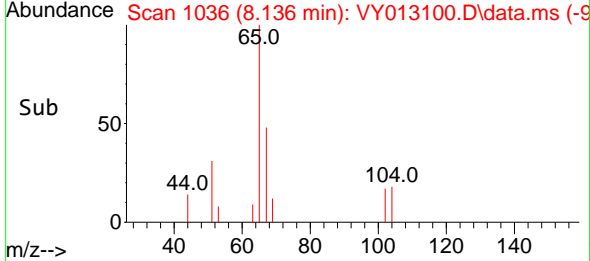
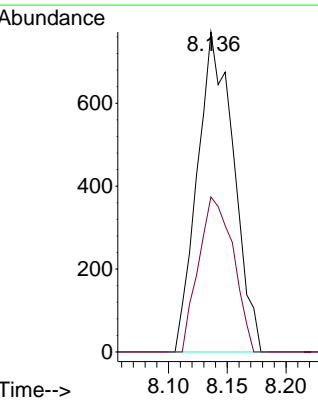
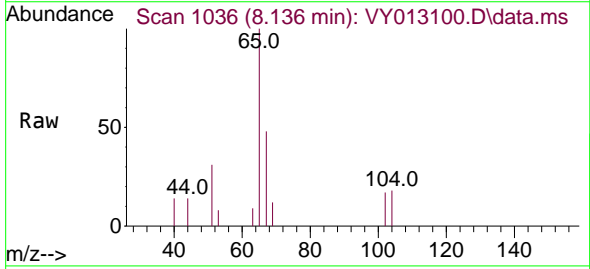
Instrument :  
 MSVOA\_Y  
 ClientSampleId :  
 APCS-NORTH

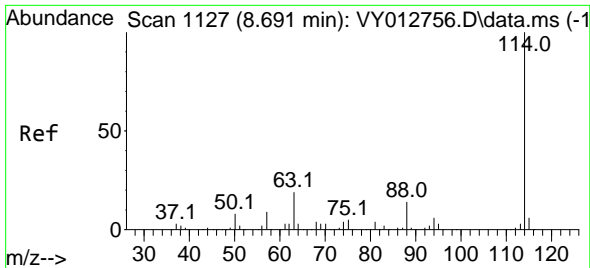
Tgt Ion:168 Resp: 1543  
 Ion Ratio Lower Upper  
 168 100  
 99 55.8 41.7 62.5



#33  
 1,2-Dichloroethane-d4  
 Concen: 107.964 ug/l  
 RT: 8.136 min Scan# 1036  
 Delta R.T. -0.007 min  
 Lab File: VY013100.D  
 Acq: 27 Mar 2023 18:28

Tgt Ion: 65 Resp: 1654  
 Ion Ratio Lower Upper  
 65 100  
 67 46.4 0.0 104.0





#34  
 1,4-Difluorobenzene  
 Concen: 50.000 ug/l  
 RT: 8.685 min Scan# 1126  
 Delta R.T. -0.007 min  
 Lab File: VY013100.D  
 Acq: 27 Mar 2023 18:28

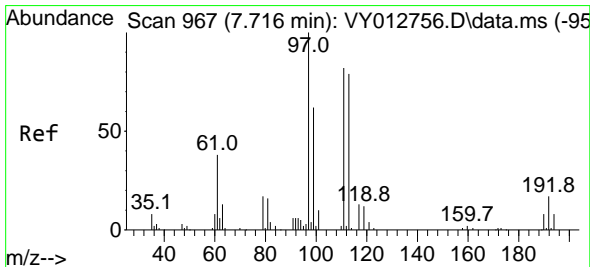
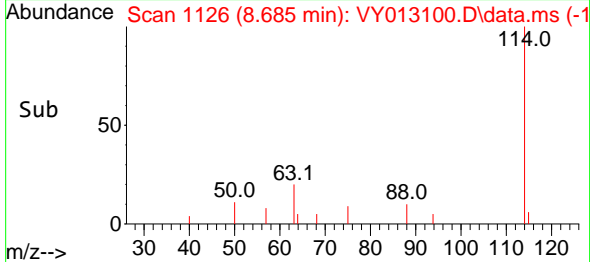
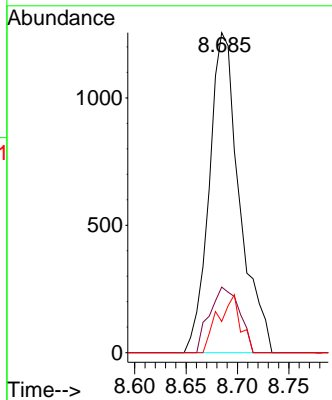
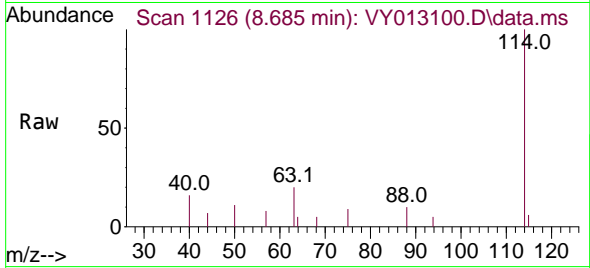
Instrument :

MSVOA\_Y

ClientSampleId :

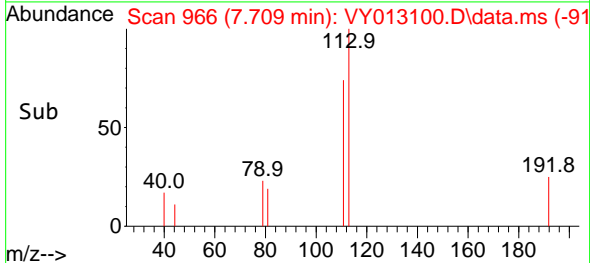
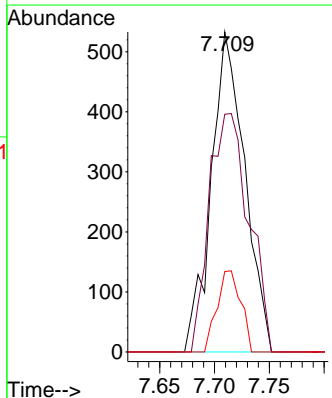
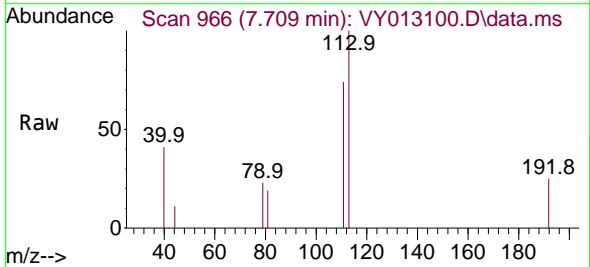
APCS-NORTH

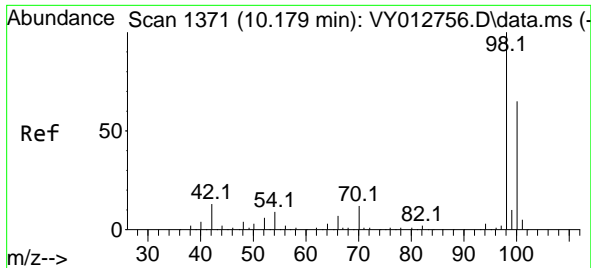
Tgt Ion	Resp	Lower	Upper
114	2567		
63	20.5	0.0	37.4
88	9.7	0.0	28.6



#35  
 Dibromofluoromethane  
 Concen: 73.265 ug/l  
 RT: 7.709 min Scan# 966  
 Delta R.T. -0.007 min  
 Lab File: VY013100.D  
 Acq: 27 Mar 2023 18:28

Tgt Ion	Resp	Lower	Upper
113	1135		
111	88.0	82.2	123.2
192	18.0	16.8	25.2

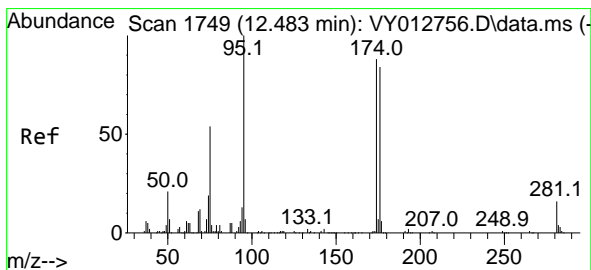
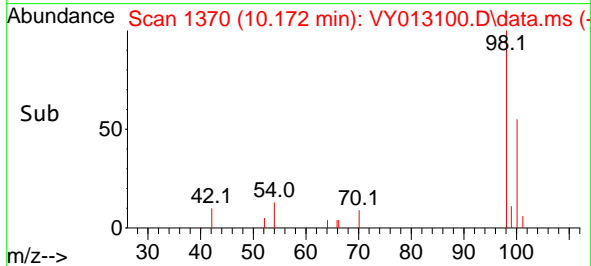
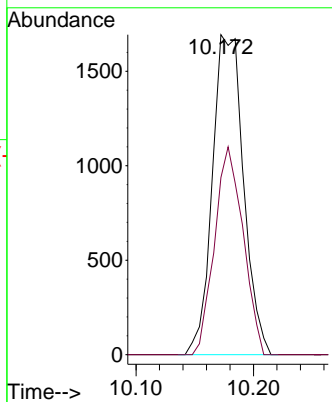
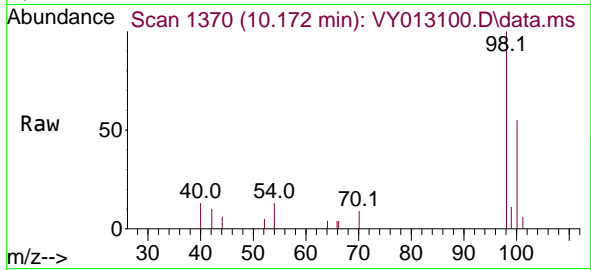




#50  
 Toluene-d8  
 Concen: 55.090 ug/l  
 RT: 10.172 min Scan# 111  
 Delta R.T. -0.007 min  
 Lab File: VY013100.D  
 Acq: 27 Mar 2023 18:28

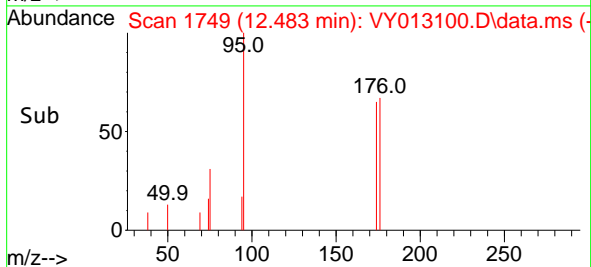
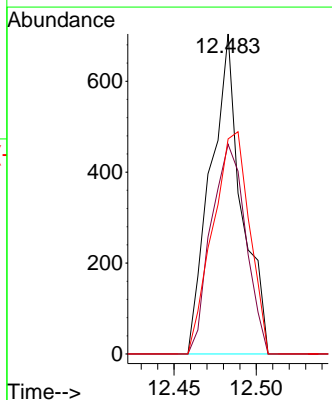
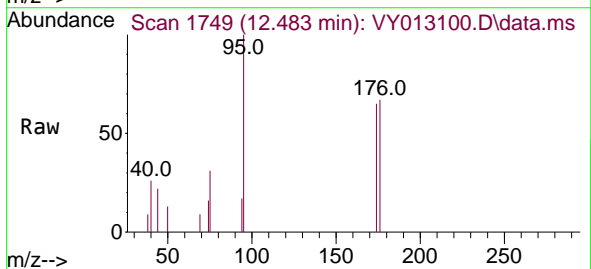
Instrument : MSVOA\_Y  
 ClientSampleId : APCS-NORTH

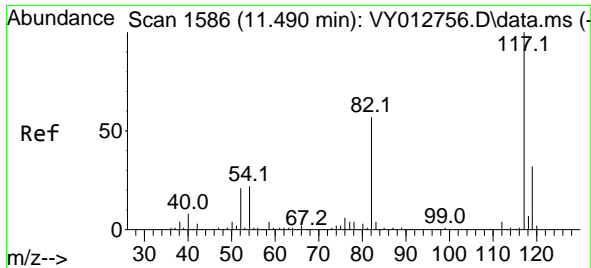
Tgt Ion: 98 Resp: 3120  
 Ion Ratio Lower Upper  
 98 100  
 100 59.4 50.9 76.3



#62  
 4-Bromofluorobenzene  
 Concen: 48.390 ug/l  
 RT: 12.483 min Scan# 1749  
 Delta R.T. -0.000 min  
 Lab File: VY013100.D  
 Acq: 27 Mar 2023 18:28

Tgt Ion: 95 Resp: 925  
 Ion Ratio Lower Upper  
 95 100  
 174 73.1 0.0 176.6  
 176 82.1 0.0 170.2





#63  
 Chlorobenzene-d5  
 Concen: 50.000 ug/l  
 RT: 11.495 min Scan# 117  
 Delta R.T. 0.006 min  
 Lab File: VY013100.D  
 Acq: 27 Mar 2023 18:28

Instrument :

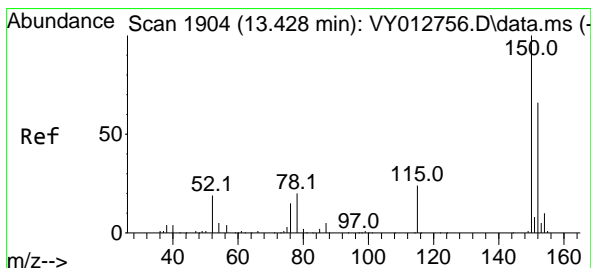
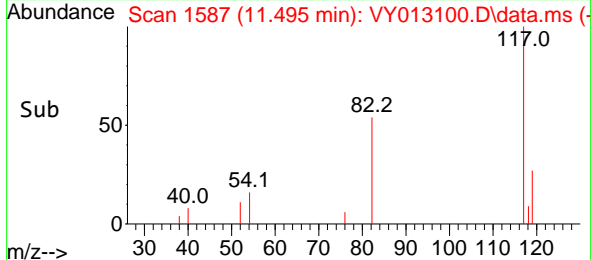
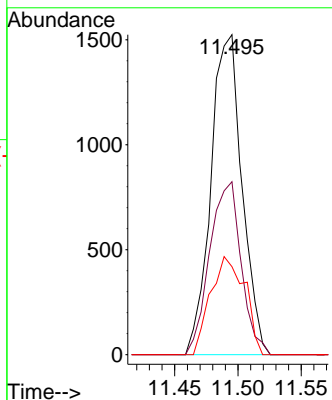
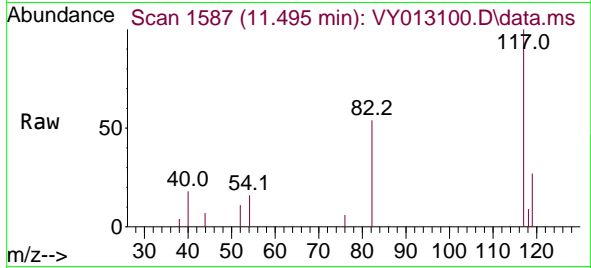
MSVOA\_Y

ClientSampleId :

APCS-NORTH

Tgt Ion:117 Resp: 2609

Ion	Ratio	Lower	Upper
117	100		
82	54.1	45.4	68.0
119	27.5	25.6	38.4



#72  
 1,4-Dichlorobenzene-d4  
 Concen: 50.000 ug/l  
 RT: 13.422 min Scan# 1903  
 Delta R.T. -0.007 min  
 Lab File: VY013100.D  
 Acq: 27 Mar 2023 18:28

Tgt Ion:152 Resp: 744

Ion	Ratio	Lower	Upper
152	100		
115	58.1	27.1	81.3
150	159.4	0.0	347.8

