

Data Path : Z:\voasrv\HPCHEM1\MSVOA_Y\Data\VY033122\
 Data File : VY008145.D
 Acq On : 31 Mar 2022 17:52
 Operator : SY/MD
 Sample : N2195-03
 Misc : 5.00g/5.0mL/MSVOA_Y/SOIL
 ALS Vial : 21 Sample Multiplier: 1

Instrument :
 MSVOA_Y
 ClientSampleId :
 TP-2-1-5FT

Quant Time: Apr 01 04:35:08 2022
 Quant Method : Z:\voasrv\HPCHEM1\MSVOA_Y\methods\82Y032522S.M
 Quant Title : SW846 8260
 QLast Update : Sat Mar 26 03:24:51 2022
 Response via : Initial Calibration

Compound	R.T.	QIon	Response	Conc	Units	Dev(Min)

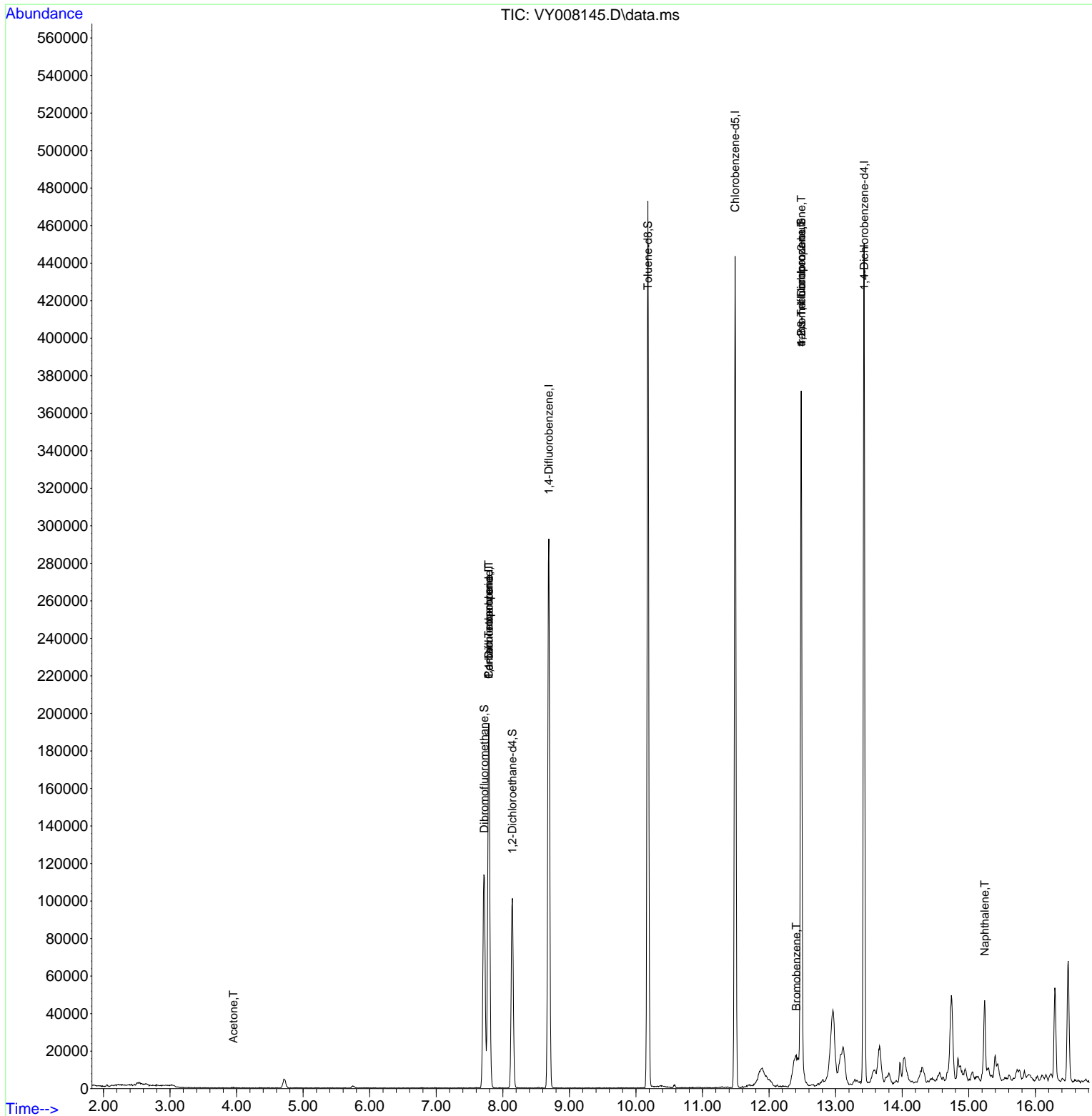
Internal Standards						
1) Pentafluorobenzene	7.789	168	155684	50.000	ug/l	0.00
34) 1,4-Difluorobenzene	8.691	114	270246	50.000	ug/l	0.00
63) Chlorobenzene-d5	11.490	117	253787	50.000	ug/l	0.00
72) 1,4-Dichlorobenzene-d4	13.428	152	116158	50.000	ug/l	0.00
System Monitoring Compounds						
33) 1,2-Dichloroethane-d4	8.143	65	78403	50.195	ug/l	0.00
Spiked Amount	50.000	Range	50 - 163	Recovery	=	100.380%
35) Dibromofluoromethane	7.722	113	84161	49.671	ug/l	0.00
Spiked Amount	50.000	Range	54 - 147	Recovery	=	99.340%
50) Toluene-d8	10.179	98	320730	50.243	ug/l	0.00
Spiked Amount	50.000	Range	49 - 140	Recovery	=	100.480%
62) 4-Bromofluorobenzene	12.483	95	113206	50.266	ug/l	0.00
Spiked Amount	50.000	Range	25 - 144	Recovery	=	100.540%
Target Compounds						
					Qvalue	
16) Acetone	3.954	43	443	1.241	ug/l	91
18) Methyl Acetate	4.479	43	193	Below Cal	#	56
20) Methylene Chloride	4.710	84	4044	Below Cal	#	74
36) 1,1-Dichloropropene	7.789	75	10786	4.053	ug/l #	52
38) Carbon Tetrachloride	7.789	117	15345	5.291	ug/l #	16
76) 1,2,3-Trichloropropane	12.483	75	55867	39.455	ug/l #	100
77) Bromobenzene	12.410	156	21370	9.715	ug/l #	1
81) trans-1,4-Dichloro-2-b...	12.483	75	55867	88.030	ug/l #	7
95) Naphthalene	15.239	128	36062	7.095	ug/l	97

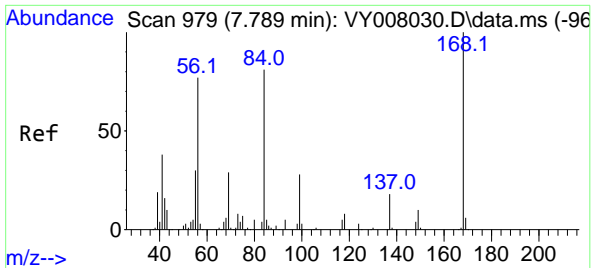
(#) = qualifier out of range (m) = manual integration (+) = signals summed

Data Path : Z:\voasrv\HPCHEM1\MSVOA_Y\Data\VY033122\
 Data File : VY008145.D
 Acq On : 31 Mar 2022 17:52
 Operator : SY/MD
 Sample : N2195-03
 Misc : 5.00g/5.0mL/MSVOA_Y/SOIL
 ALS Vial : 21 Sample Multiplier: 1

Instrument :
 MSVOA_Y
 ClientSampleId :
 TP-2-1-5FT

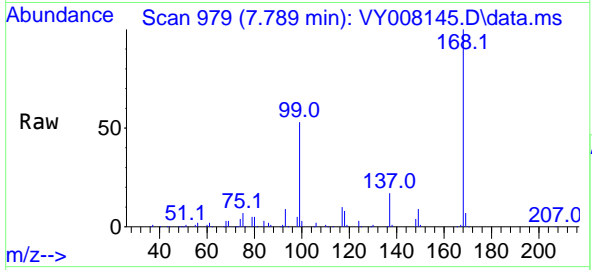
Quant Time: Apr 01 04:35:08 2022
 Quant Method : Z:\voasrv\HPCHEM1\MSVOA_Y\methods\82Y032522S.M
 Quant Title : SW846 8260
 QLast Update : Sat Mar 26 03:24:51 2022
 Response via : Initial Calibration



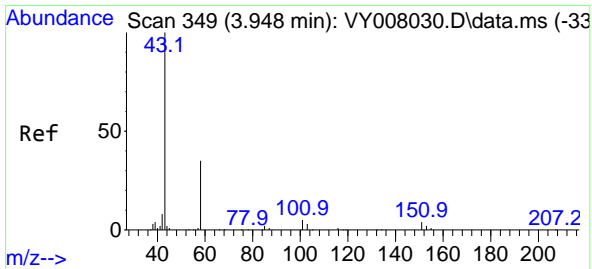
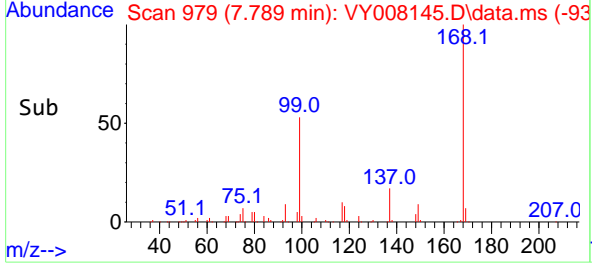
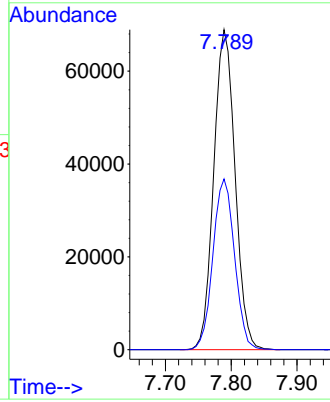


#1
 Pentafluorobenzene
 Concen: 50.000 ug/l
 RT: 7.789 min Scan# 91
 Delta R.T. -0.000 min
 Lab File: VY008145.D
 Acq: 31 Mar 2022 17:52

Instrument :
 MSVOA_Y
 ClientSampleId :
 TP-2-1-5FT

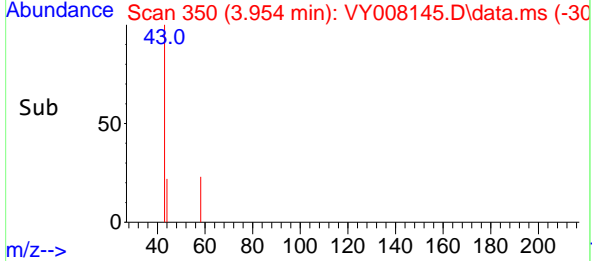
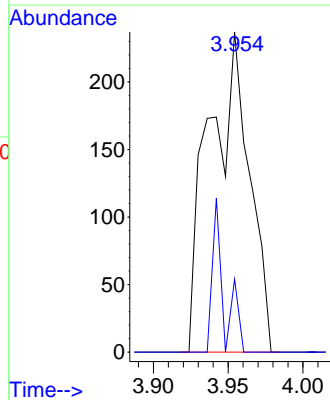
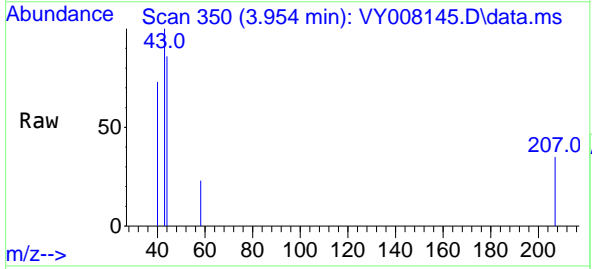


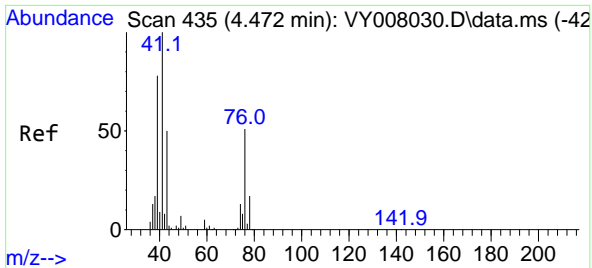
Tgt Ion:168 Resp: 155684
 Ion Ratio Lower Upper
 168 100
 99 53.4 46.9 70.3



#16
 Acetone
 Concen: 1.241 ug/l
 RT: 3.954 min Scan# 350
 Delta R.T. 0.006 min
 Lab File: VY008145.D
 Acq: 31 Mar 2022 17:52

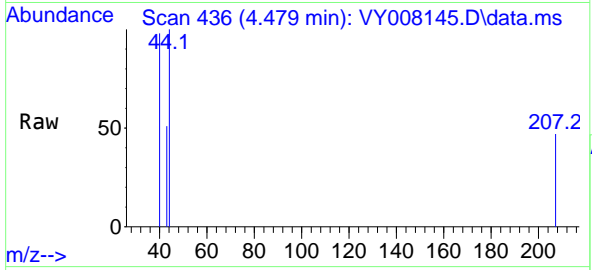
Tgt Ion: 43 Resp: 443
 Ion Ratio Lower Upper
 43 100
 58 22.8 22.0 33.0



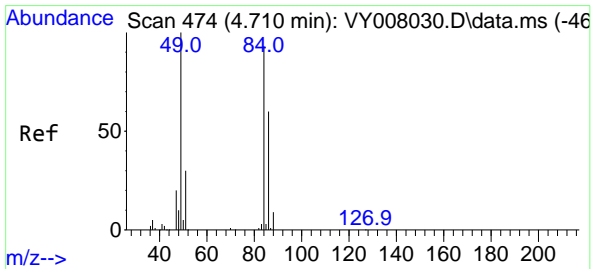
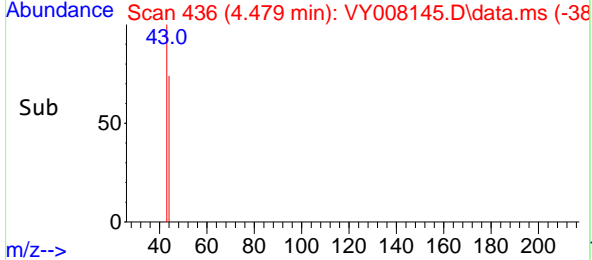
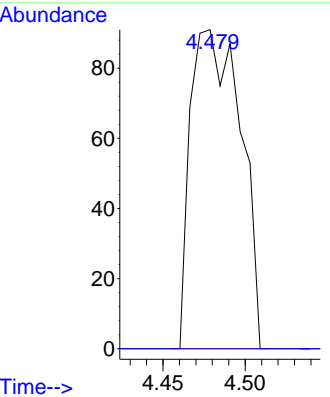


#18
 Methyl Acetate
 Concen: Below Cal
 RT: 4.479 min Scan# 41
 Delta R.T. 0.007 min
 Lab File: VY008145.D
 Acq: 31 Mar 2022 17:52

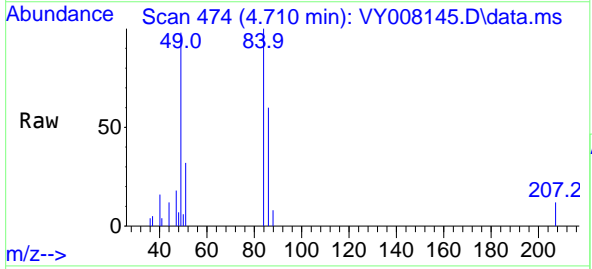
Instrument : MSVOA_Y
 ClientSampleId : TP-2-1-5FT



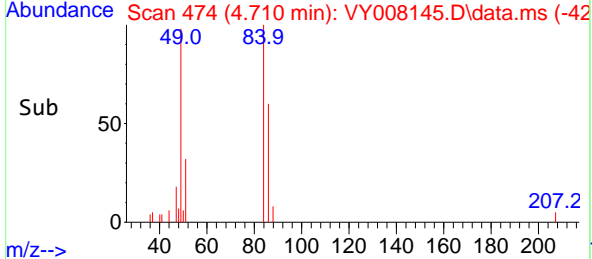
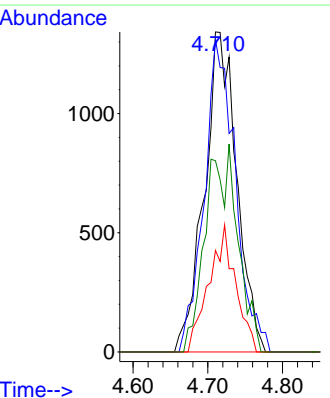
Tgt Ion: 43 Resp: 193
 Ion Ratio Lower Upper
 43 100
 74 0.0 16.6 24.8#

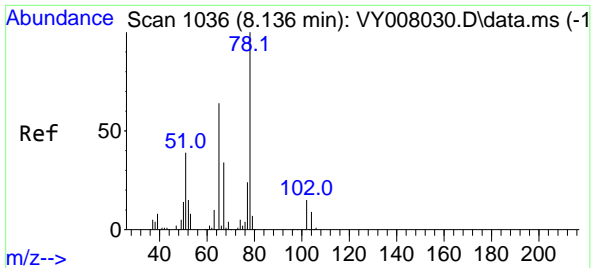


#20
 Methylene Chloride
 Concen: Below Cal
 RT: 4.710 min Scan# 474
 Delta R.T. 0.000 min
 Lab File: VY008145.D
 Acq: 31 Mar 2022 17:52



Tgt Ion: 84 Resp: 4044
 Ion Ratio Lower Upper
 84 100
 49 97.6 114.4 171.6#
 51 31.7 35.3 52.9#
 86 59.8 53.7 80.5

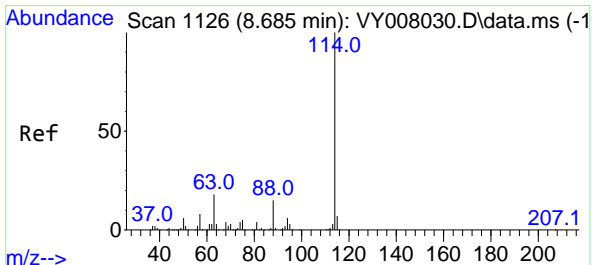
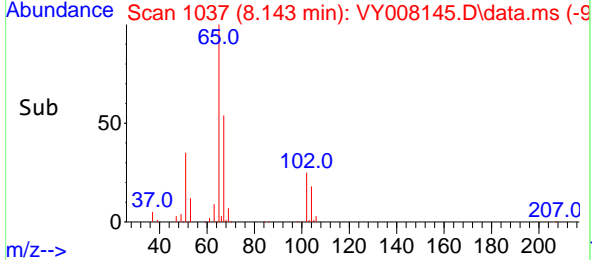
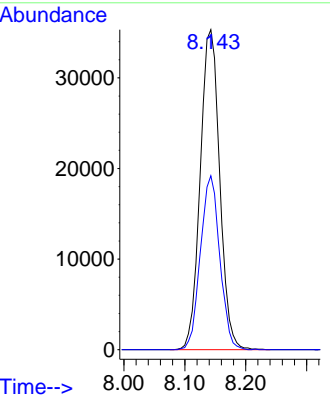
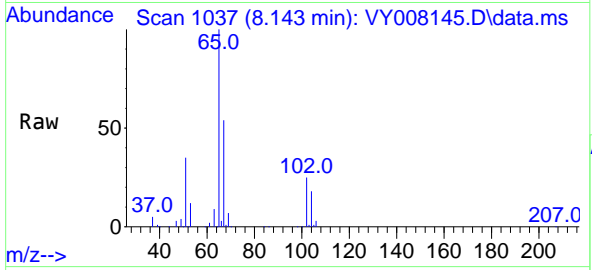




#33
 1,2-Dichloroethane-d4
 Concen: 50.195 ug/l
 RT: 8.143 min Scan# 1036
 Delta R.T. 0.007 min
 Lab File: VY008145.D
 Acq: 31 Mar 2022 17:52

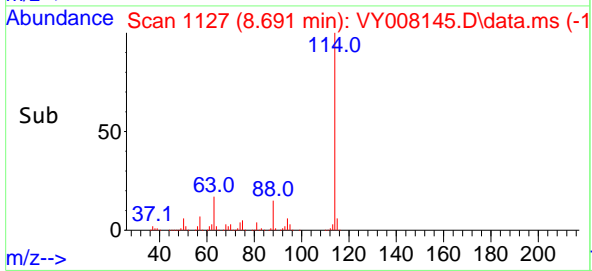
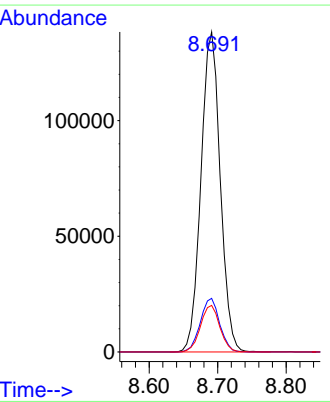
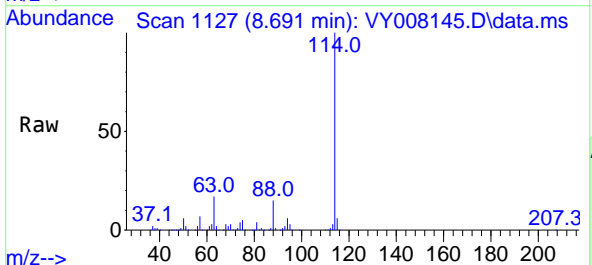
Instrument : MSVOA_Y
 ClientSampleId : TP-2-1-5FT

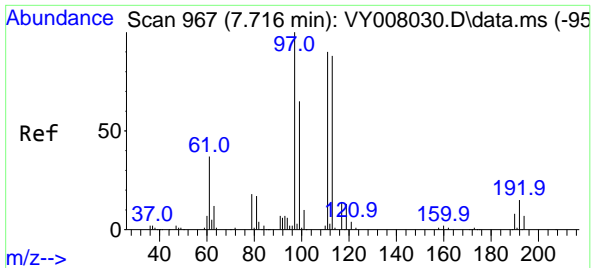
Tgt Ion: 65 Resp: 78403
 Ion Ratio Lower Upper
 65 100
 67 54.0 0.0 99.4



#34
 1,4-Difluorobenzene
 Concen: 50.000 ug/l
 RT: 8.691 min Scan# 1127
 Delta R.T. 0.006 min
 Lab File: VY008145.D
 Acq: 31 Mar 2022 17:52

Tgt Ion: 114 Resp: 270246
 Ion Ratio Lower Upper
 114 100
 63 16.8 0.0 43.2
 88 14.6 0.0 31.8



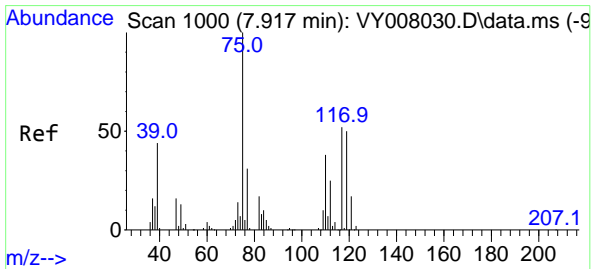
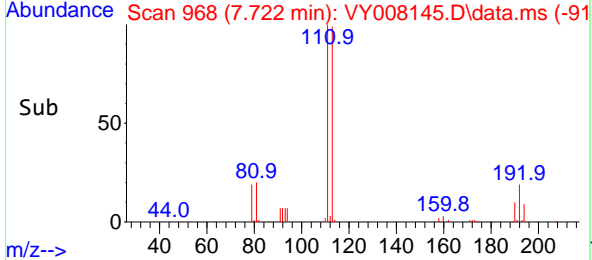
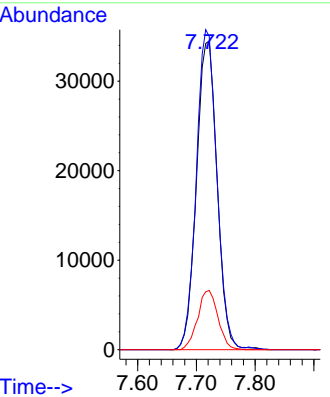
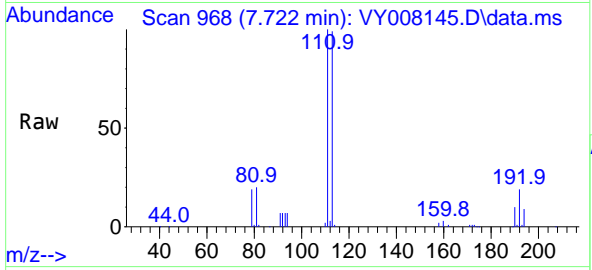


#35
 Dibromofluoromethane
 Concen: 49.671 ug/l
 RT: 7.722 min Scan# 90
 Delta R.T. 0.006 min
 Lab File: VY008145.D
 Acq: 31 Mar 2022 17:52

Instrument : MSVOA_Y
 ClientSampleId : TP-2-1-5FT

Tgt Ion:113 Resp: 84161

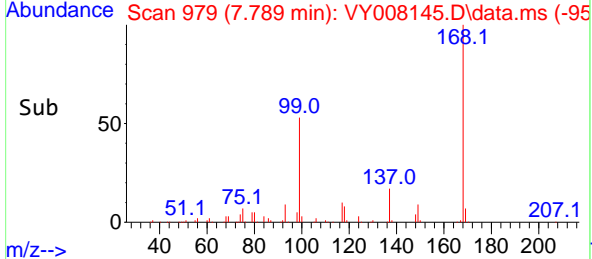
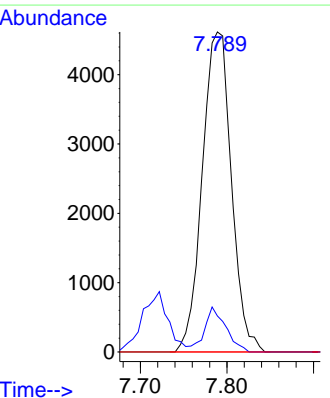
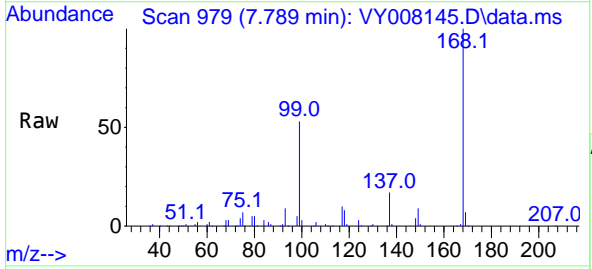
Ion	Ratio	Lower	Upper
113	100		
111	102.6	82.6	124.0
192	18.9	17.6	26.4

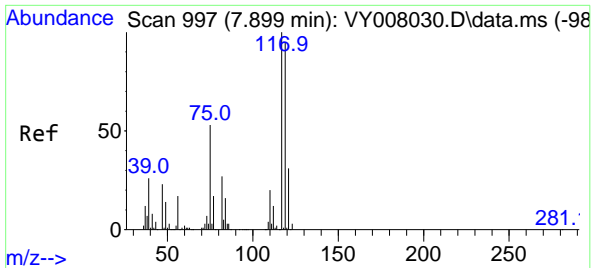


#36
 1,1-Dichloropropene
 Concen: 4.053 ug/l
 RT: 7.789 min Scan# 979
 Delta R.T. -0.128 min
 Lab File: VY008145.D
 Acq: 31 Mar 2022 17:52

Tgt Ion: 75 Resp: 10786

Ion	Ratio	Lower	Upper
75	100		
110	10.1	17.1	51.2#
77	0.0	24.4	36.6#



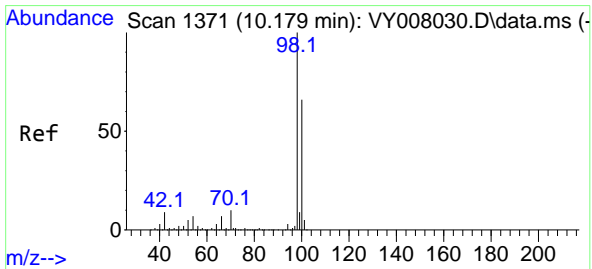
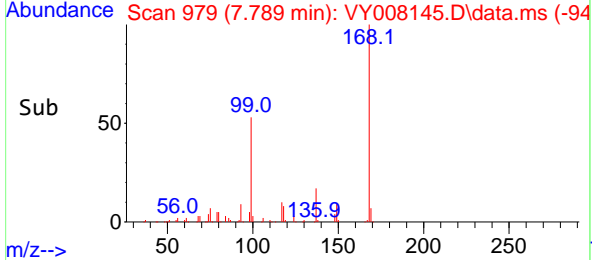
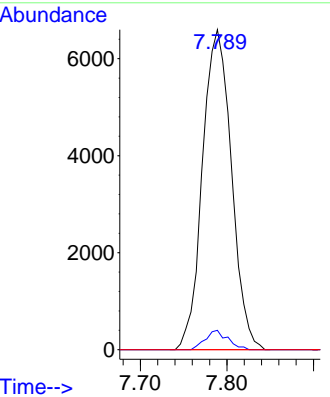
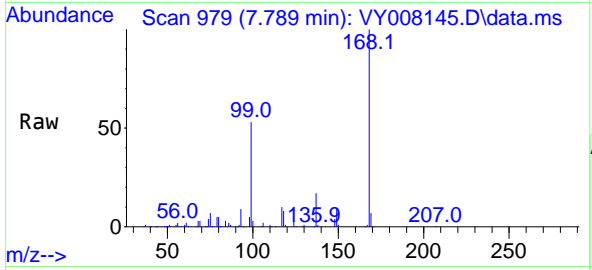


#38
 Carbon Tetrachloride
 Concen: 5.291 ug/l
 RT: 7.789 min Scan# 91
 Delta R.T. -0.110 min
 Lab File: VY008145.D
 Acq: 31 Mar 2022 17:52

Instrument : MSVOA_Y
 ClientSampleId : TP-2-1-5FT

Tgt Ion:117 Resp: 15345

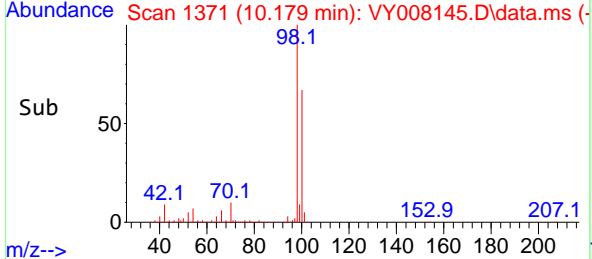
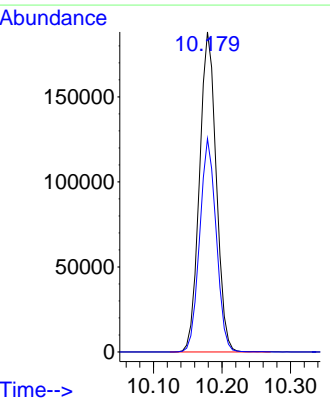
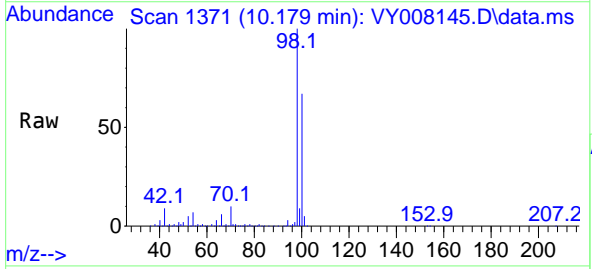
Ion	Ratio	Lower	Upper
117	100		
119	6.1	77.9	116.9#
121	0.0	24.8	37.2#

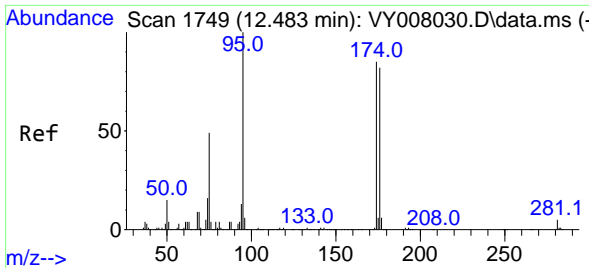


#50
 Toluene-d8
 Concen: 50.243 ug/l
 RT: 10.179 min Scan# 1371
 Delta R.T. -0.000 min
 Lab File: VY008145.D
 Acq: 31 Mar 2022 17:52

Tgt Ion: 98 Resp: 320730

Ion	Ratio	Lower	Upper
98	100		
100	65.5	50.2	75.2

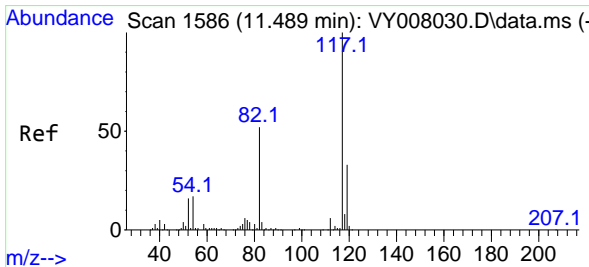
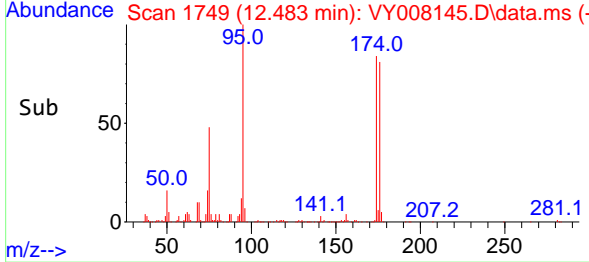
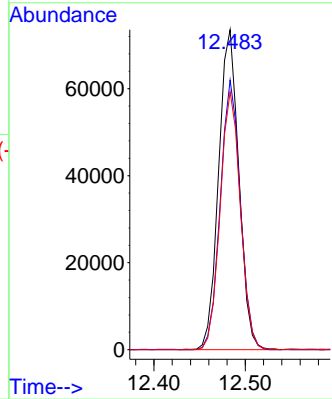
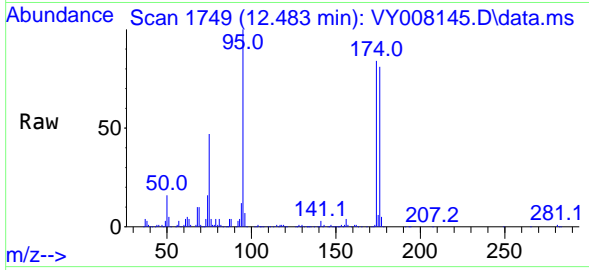




#62
 4-Bromofluorobenzene
 Concen: 50.266 ug/l
 RT: 12.483 min Scan# 1
 Delta R.T. 0.000 min
 Lab File: VY008145.D
 Acq: 31 Mar 2022 17:52

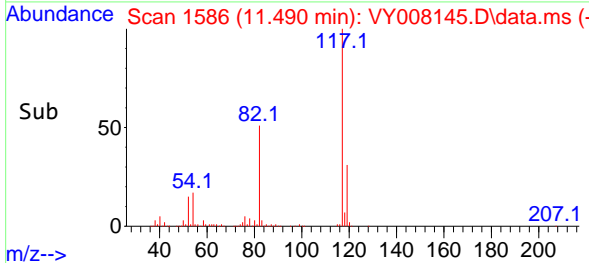
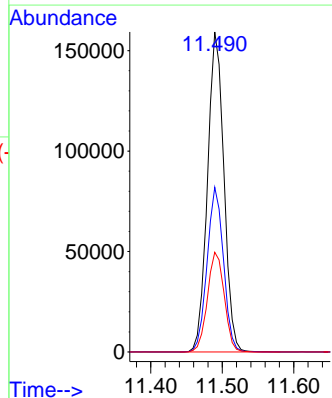
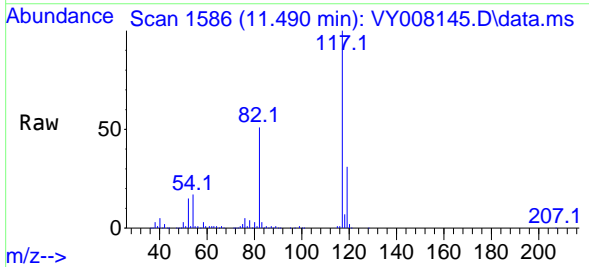
Instrument :
 MSVOA_Y
 ClientSampleId :
 TP-2-1-5FT

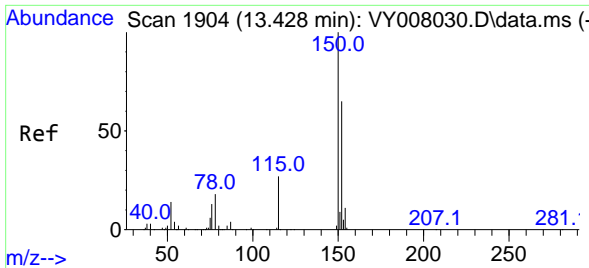
Tgt Ion: 95 Resp: 113206
 Ion Ratio Lower Upper
 95 100
 174 83.3 0.0 177.0
 176 80.5 0.0 175.8



#63
 Chlorobenzene-d5
 Concen: 50.000 ug/l
 RT: 11.490 min Scan# 1586
 Delta R.T. 0.001 min
 Lab File: VY008145.D
 Acq: 31 Mar 2022 17:52

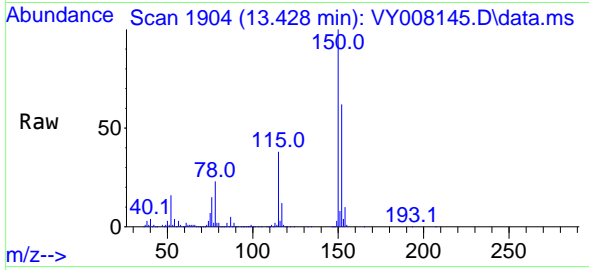
Tgt Ion: 117 Resp: 253787
 Ion Ratio Lower Upper
 117 100
 82 51.4 43.0 64.4
 119 31.2 25.4 38.0



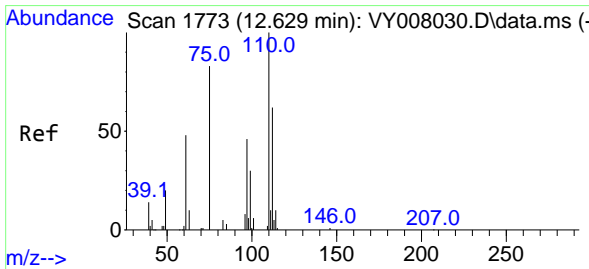
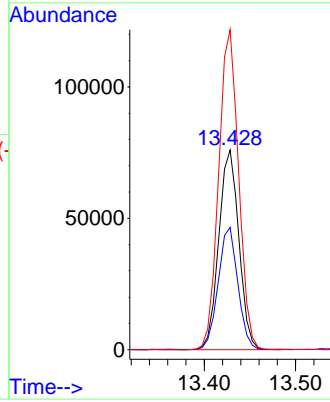
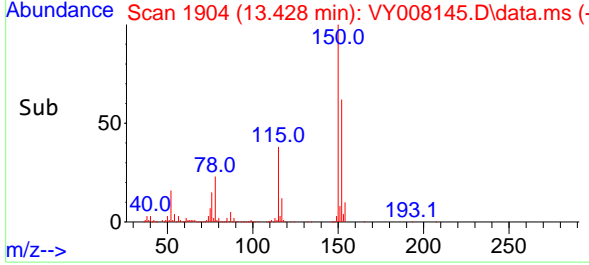


#72
 1,4-Dichlorobenzene-d4
 Concen: 50.000 ug/l
 RT: 13.428 min Scan# 1904
 Delta R.T. 0.000 min
 Lab File: VY008145.D
 Acq: 31 Mar 2022 17:52

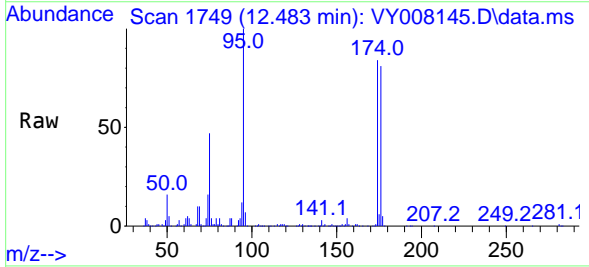
Instrument : MSVOA_Y
 ClientSampleId : TP-2-1-5FT



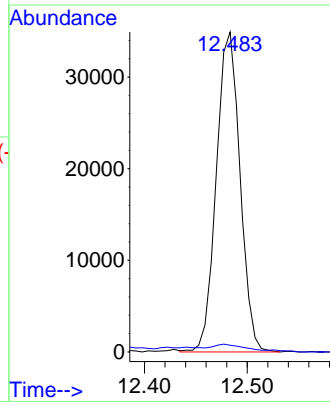
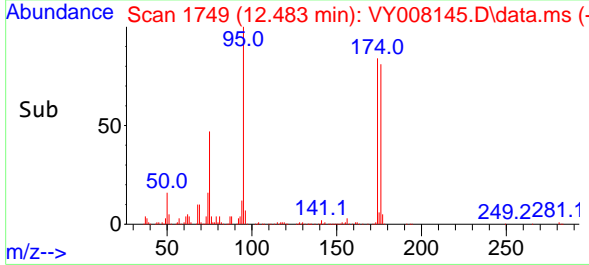
Tgt Ion:152 Resp: 116158
 Ion Ratio Lower Upper
 152 100
 115 59.8 28.2 84.7
 150 158.9 0.0 347.6

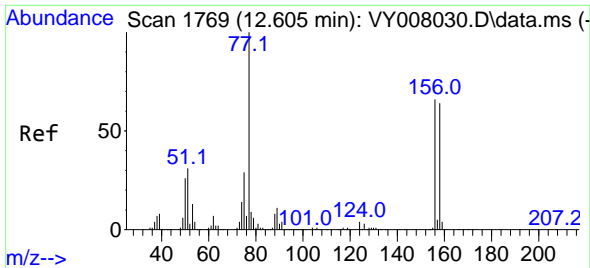


#76
 1,2,3-Trichloropropane
 Concen: 39.455 ug/l
 RT: 12.483 min Scan# 1749
 Delta R.T. -0.146 min
 Lab File: VY008145.D
 Acq: 31 Mar 2022 17:52



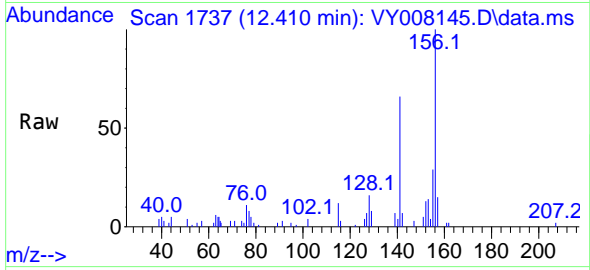
Tgt Ion: 75 Resp: 55867
 Ion Ratio Lower Upper
 75 100
 77 3.7 0.0 0.0#



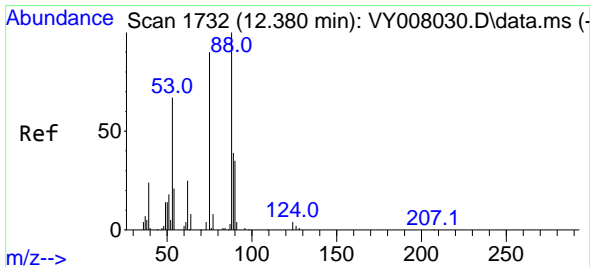
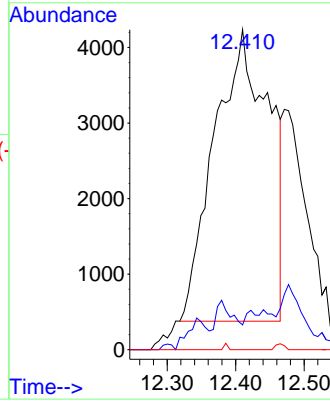
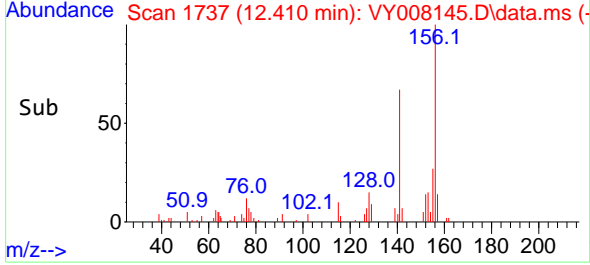


#77
 Bromobenzene
 Concen: 9.715 ug/l
 RT: 12.410 min Scan# 1737
 Delta R.T. -0.195 min
 Lab File: VY008145.D
 Acq: 31 Mar 2022 17:52

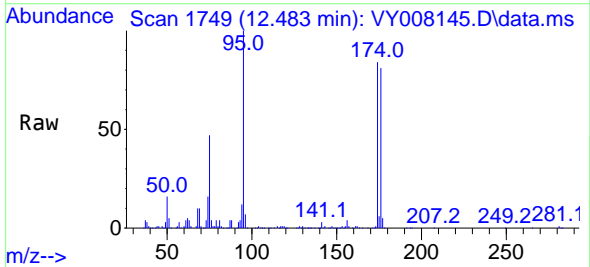
Instrument : MSVOA_Y
 ClientSampleId : TP-2-1-5FT



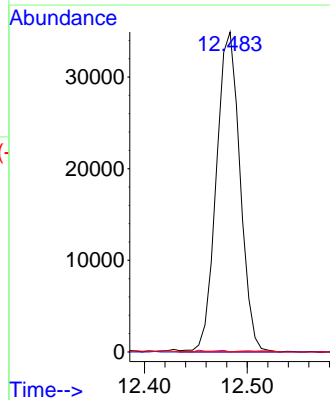
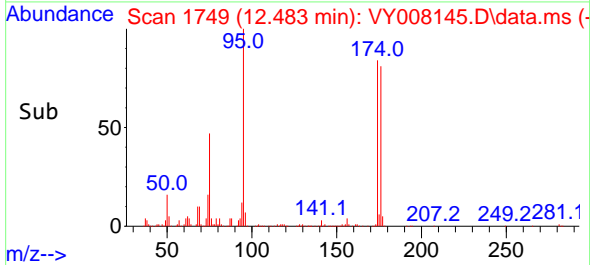
Tgt Ion:156 Resp: 21370
 Ion Ratio Lower Upper
 156 100
 77 2.7 95.5 286.4#
 158 0.0 48.0 144.0#

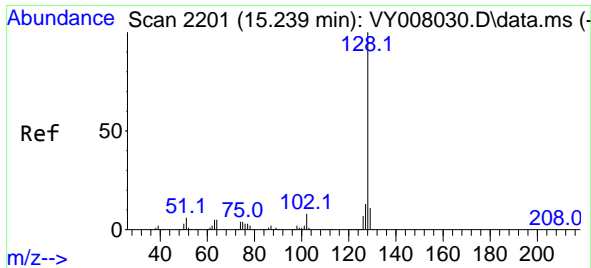


#81
 trans-1,4-Dichloro-2-butene
 Concen: 88.030 ug/l
 RT: 12.483 min Scan# 1749
 Delta R.T. 0.103 min
 Lab File: VY008145.D
 Acq: 31 Mar 2022 17:52



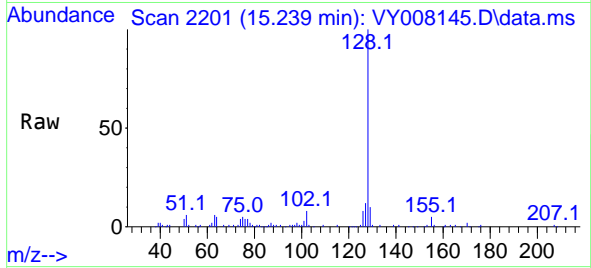
Tgt Ion: 75 Resp: 55867
 Ion Ratio Lower Upper
 75 100
 53 0.0 85.3 127.9#
 89 0.2 37.0 55.4#





#95
 Naphthalene
 Concen: 7.095 ug/l
 RT: 15.239 min Scan# 21
 Delta R.T. -0.000 min
 Lab File: VY008145.D
 Acq: 31 Mar 2022 17:52

Instrument :
 MSVOA_Y
 ClientSampleId :
 TP-2-1-5FT



Tgt Ion:128 Resp: 36062

Ion	Ratio	Lower	Upper
128	100		
127	13.2	11.0	16.4
129	12.3	8.4	12.6

