

Data Path : Z:\voasrv\HPCHEM1\MSVOA_Y\Data\VY040221\
 Data File : VY004257.D
 Acq On : 02 Apr 2021 13:06
 Operator : SY/MD
 Sample : M1897-03
 Misc : 7.39g/5mL/MSVOA_Y/SOIL
 ALS Vial : 8 Sample Multiplier: 1

Instrument :
 MSVOA_Y
 ClientSampleId :
 TP-2

Integration Parameters: RTEINT.P
 Integrator: RTE
 Smoothing : ON Filtering: 5
 Sampling : 1 Min Area: 3 % of largest Peak
 Start Thrs: 0.2 Max Peaks: 100
 Stop Thrs : 0 Peak Location: TOP

If leading or trailing edge < 100 prefer < Baseline drop else tangent >
 Peak separation: 5

Method : Z:\voasrv\HPCHEM1\MSVOA_Y\methods\82Y032921S.M
 Title : SW846 8260

Signal : TIC: VY004257.D\data.ms

peak #	R.T. min	first scan	max scan	last scan	PK TY	peak height	corr. area	corr. % max.	% of total
1	4.735	467	478	489	rBV3	9776	32288	1.81%	0.487%
2	7.728	959	969	975	rBV	144712	344505	19.30%	5.192%
3	7.801	975	981	993	rVB	247384	550429	30.83%	8.296%
4	8.155	1027	1039	1050	rBV	149814	330358	18.51%	4.979%
5	8.697	1119	1128	1139	rVB	397316	772322	43.27%	11.640%
6	10.185	1364	1372	1380	rBV	644231	1084236	60.74%	16.340%
7	11.496	1579	1587	1596	rBV	565392	907291	50.83%	13.674%
8	12.343	1720	1726	1730	rVB	13634	21554	1.21%	0.325%
9	12.496	1742	1751	1758	rBV2	986325	1785096	100.00%	26.903%
10	13.428	1898	1904	1911	rVB	479301	716378	40.13%	10.797%
11	13.971	1987	1993	2001	rVB2	26046	45731	2.56%	0.689%
12	15.007	2158	2163	2169	rBV8	8140	21662	1.21%	0.326%
13	16.123	2342	2346	2349	rBV6	13617	23421	1.31%	0.353%

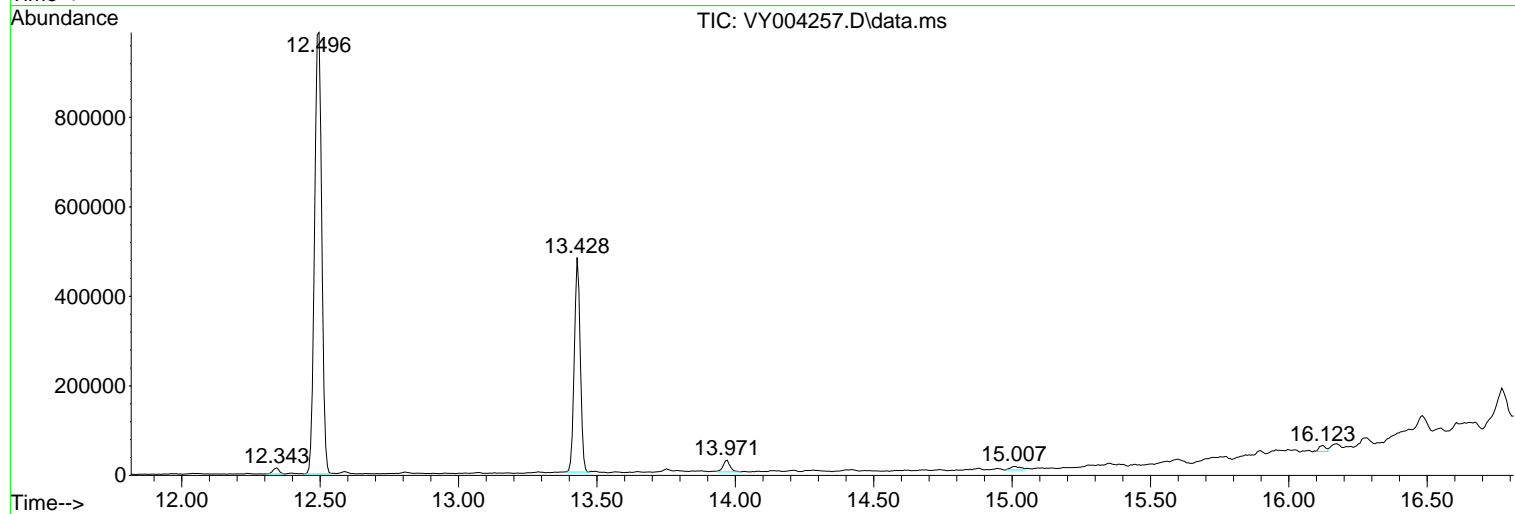
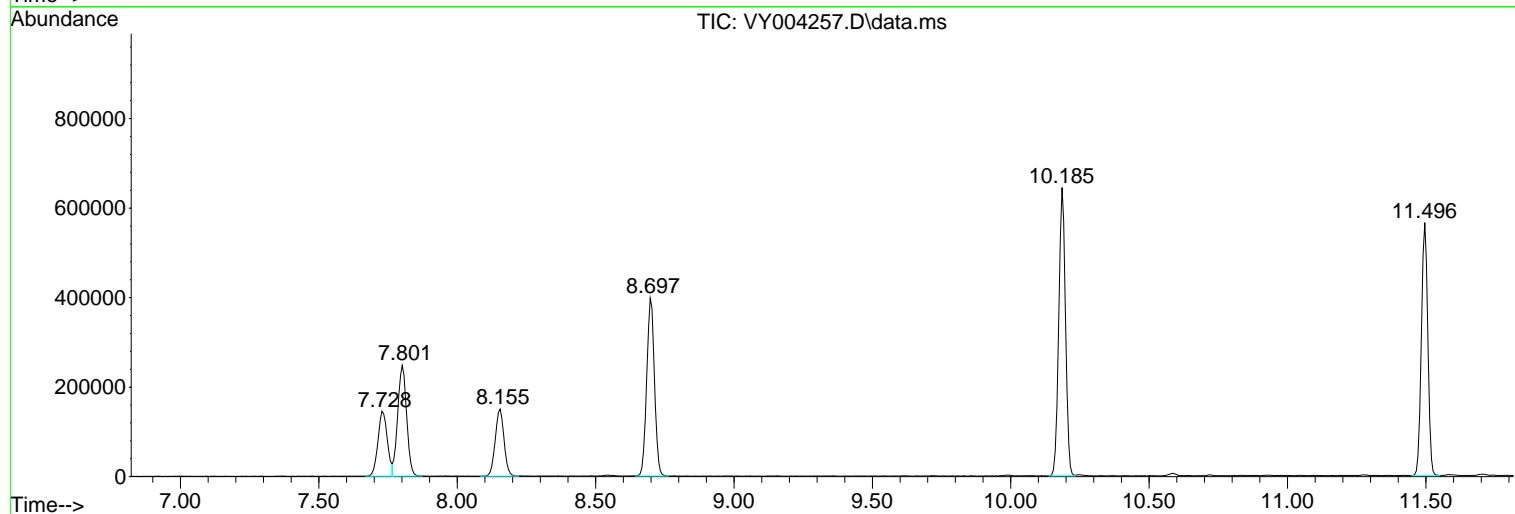
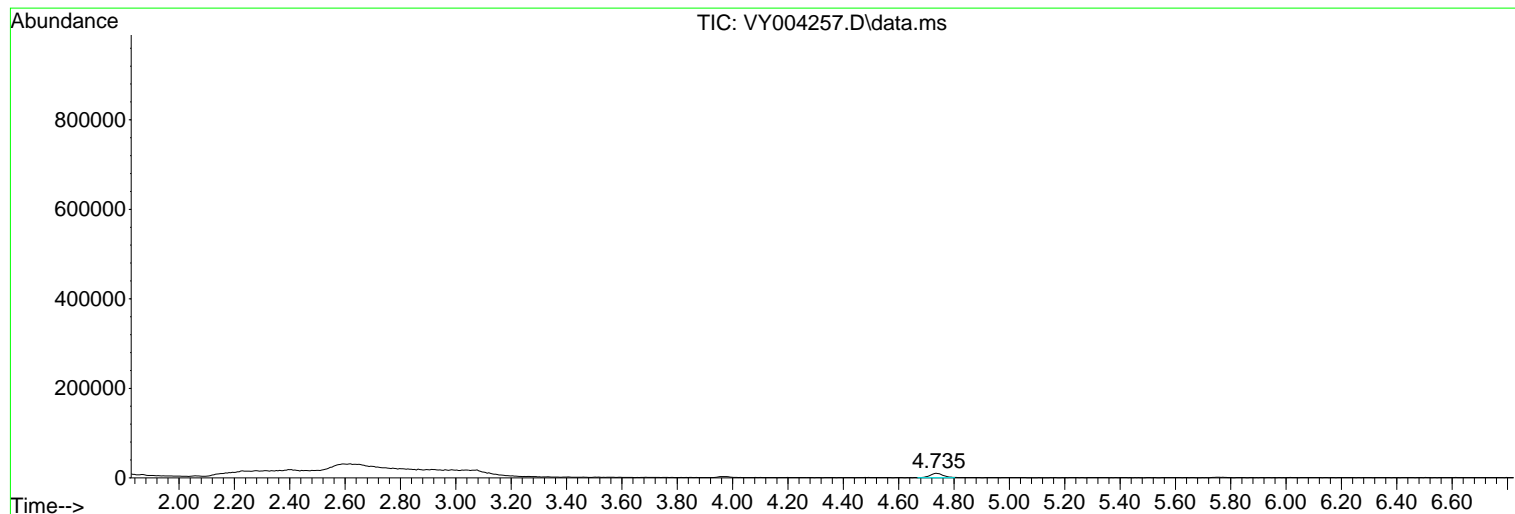
Sum of corrected areas: 6635271

Data Path : Z:\voasrv\HPCHEM1\MSVOA_Y\Data\VY040221\
 Data File : VY004257.D
 Acq On : 02 Apr 2021 13:06
 Operator : SY/MD
 Sample : M1897-03
 Misc : 7.39g/5mL/MSVOA_Y/SOIL
 ALS Vial : 8 Sample Multiplier: 1

Instrument :
 MSVOA_Y
 ClientSampleId :
 TP-2

Quant Method : Z:\voasrv\HPCHEM1\MSVOA_Y\methods\82Y032921S.M
 Quant Title : SW846 8260

TIC Library : C:\DATABASE\NIST11.L
 TIC Integration Parameters: LSCINT.P



Data Path : Z:\voasrv\HPCHEM1\MSVOA_Y\Data\VY040221\
Data File : VY004257.D
Acq On : 02 Apr 2021 13:06
Operator : SY/MD
Sample : M1897-03
Misc : 7.39g/5mL/MSVOA_Y/SOIL
ALS Vial : 8 Sample Multiplier: 1

Instrument :
MSVOA_Y
ClientSampled :
TP-2

Quant Method : Z:\voasrv\HPCHEM1\MSVOA_Y\methods\82Y032921S.M
Quant Title : SW846 8260

TIC Library : C:\DATABASE\NIST11.L
TIC Integration Parameters: LSCINT.P

No Library Search Compounds Detected

Data Path : Z:\voasrv\HPCHEM1\MSVOA_Y\Data\VY040221\
Data File : VY004257.D
Acq On : 02 Apr 2021 13:06
Operator : SY/MD
Sample : M1897-03
Misc : 7.39g/5mL/MSVOA_Y/SOIL
ALS Vial : 8 Sample Multiplier: 1

Instrument :
MSVOA_Y
ClientSampleId :
TP-2

Quant Method : Z:\voasrv\HPCHEM1\MSVOA_Y\methods\82Y032921S.M
Quant Title : SW846 8260

TIC Library : C:\DATABASE\NIST11.L
TIC Integration Parameters: LSCINT.P

TIC Top Hit name	RT	EstConc	Units	Response	--Internal Standard--			
					#	RT	Resp	Conc
