

Data Path : Z:\voasrv\HPCHEM1\MSVOA_Y\Data\VY040323\
 Data File : VY013178.D
 Acq On : 03 Apr 2023 16:08
 Operator : KP/MD
 Sample : 02165-03
 Misc : 6.44g/5.0mL/MSVOA_Y/SOIL
 ALS Vial : 16 Sample Multiplier: 1

Instrument :
 MSVOA_Y
 ClientSampleId :
 SB-3B

Quant Time: Apr 03 23:10:07 2023
 Quant Method : Z:\voasrv\HPCHEM1\MSVOA_Y\methods\82Y033023S.M
 Quant Title : SW846 8260
 QLast Update : Mon Apr 03 13:40:57 2023
 Response via : Initial Calibration

Compound	R.T.	QIon	Response	Conc	Units	Dev(Min)

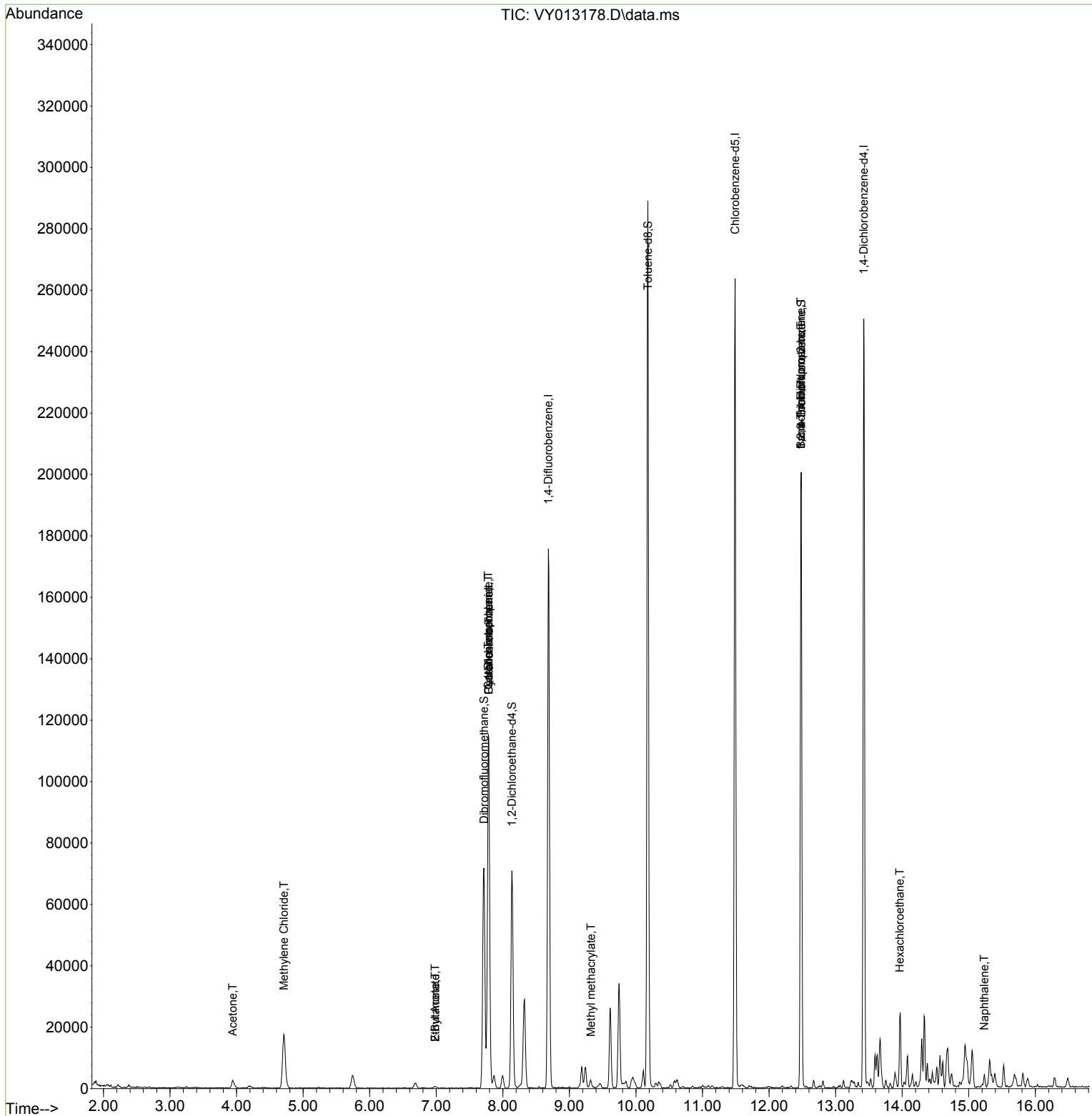
Internal Standards						
1) Pentafluorobenzene	7.789	168	91927	50.000	ug/l	0.00
34) 1,4-Difluorobenzene	8.685	114	153501	50.000	ug/l	0.00
63) Chlorobenzene-d5	11.489	117	142676	50.000	ug/l	0.00
72) 1,4-Dichlorobenzene-d4	13.422	152	68553	50.000	ug/l	0.00
System Monitoring Compounds						
33) 1,2-Dichloroethane-d4	8.136	65	56789	57.483	ug/l	0.00
Spiked Amount	50.000	Range	50 - 163	Recovery	=	114.960%
35) Dibromofluoromethane	7.716	113	49795	49.657	ug/l	0.00
Spiked Amount	50.000	Range	54 - 147	Recovery	=	99.320%
50) Toluene-d8	10.179	98	186030	49.141	ug/l	0.00
Spiked Amount	50.000	Range	49 - 140	Recovery	=	98.280%
62) 4-Bromofluorobenzene	12.483	95	58631	47.581	ug/l	0.00
Spiked Amount	50.000	Range	25 - 144	Recovery	=	95.160%
Target Compounds						
						Qvalue
16) Acetone	3.942	43	4821	15.959	ug/l	98
20) Methylene Chloride	4.710	84	13179	8.141	ug/l	88
25) 2-Butanone	6.984	43	948	2.510	ug/l	99
31) Cyclohexane	7.789	56	1984	1.230	ug/l #	3
36) 1,1-Dichloropropene	7.783	75	6398	4.238	ug/l #	51
37) Ethyl Acetate	6.984	43	948	1.105	ug/l #	69
38) Carbon Tetrachloride	7.783	117	8765	5.262	ug/l #	17
48) Methyl methacrylate	9.325	41	718	1.004	ug/l #	65
71) Bromoform	12.477	173	708	1.005	ug/l #	28
76) 1,2,3-Trichloropropane	12.477	75	29661	38.515	ug/l #	100
81) trans-1,4-Dichloro-2-b...	12.477	75	29661	85.893	ug/l #	13
90) Hexachloroethane	13.965	117	1127	1.281	ug/l #	10
95) Naphthalene	15.233	128	3384	4.463	ug/l #	96

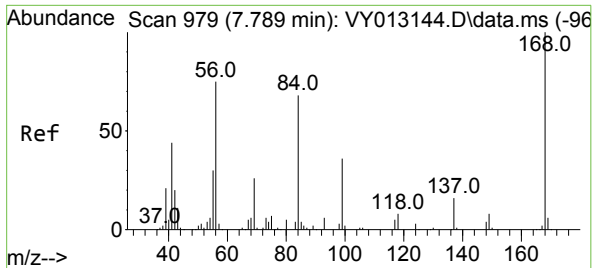
(#) = qualifier out of range (m) = manual integration (+) = signals summed

Data Path : Z:\voasrv\HPCHEM1\MSVOA_Y\Data\VY040323\
 Data File : VY013178.D
 Acq On : 03 Apr 2023 16:08
 Operator : KP/MD
 Sample : 02165-03
 Misc : 6.44g/5.0mL/MSVOA_Y/SOIL
 ALS Vial : 16 Sample Multiplier: 1

Instrument :
 MSVOA_Y
 ClientSampleId :
 SB-3B

Quant Time: Apr 03 23:10:07 2023
 Quant Method : Z:\voasrv\HPCHEM1\MSVOA_Y\methods\82Y033023S.M
 Quant Title : SW846 8260
 QLast Update : Mon Apr 03 13:40:57 2023
 Response via : Initial Calibration

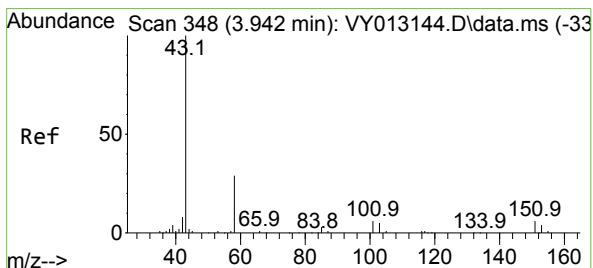
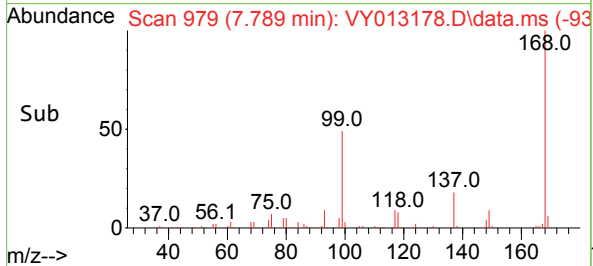
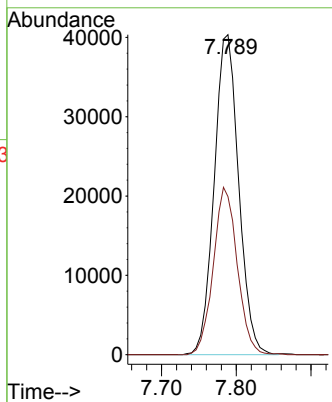
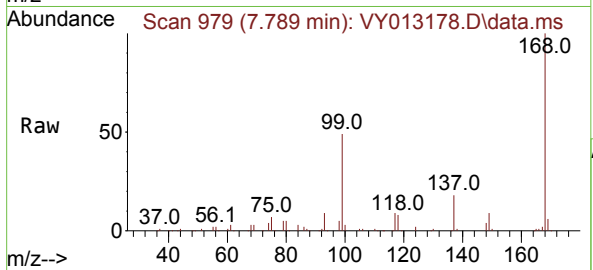




#1
 Pentafluorobenzene
 Concen: 50.000 ug/l
 RT: 7.789 min Scan# 91
 Delta R.T. -0.000 min
 Lab File: VY013178.D
 Acq: 03 Apr 2023 16:08

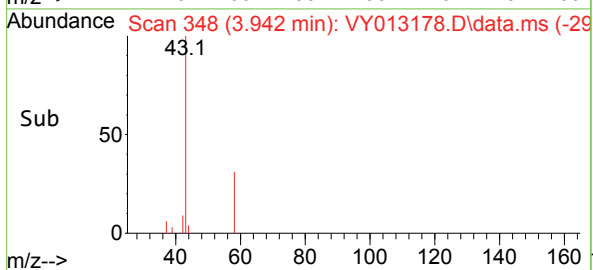
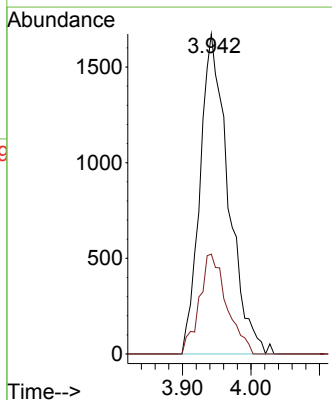
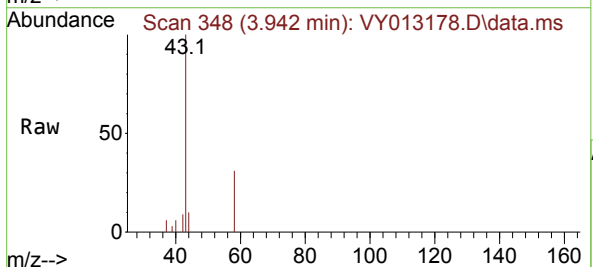
Instrument :
 MSVOA_Y
 ClientSampleId :
 SB-3B

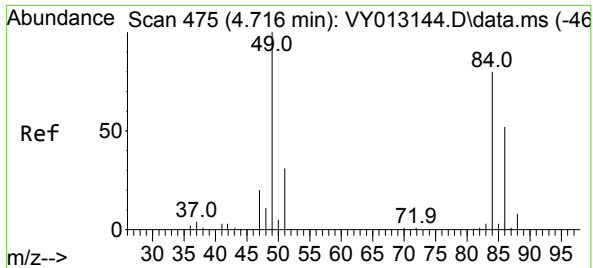
Tgt Ion:168 Resp: 91927
 Ion Ratio Lower Upper
 168 100
 99 49.4 41.7 62.5



#16
 Acetone
 Concen: 15.959 ug/l
 RT: 3.942 min Scan# 348
 Delta R.T. 0.000 min
 Lab File: VY013178.D
 Acq: 03 Apr 2023 16:08

Tgt Ion: 43 Resp: 4821
 Ion Ratio Lower Upper
 43 100
 58 31.2 24.2 36.2

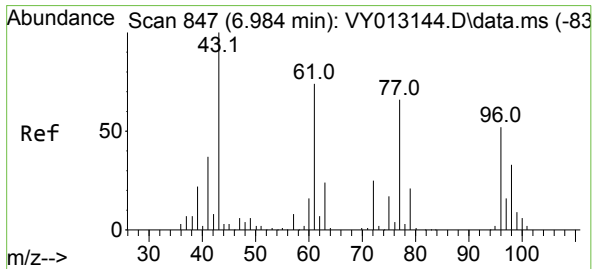
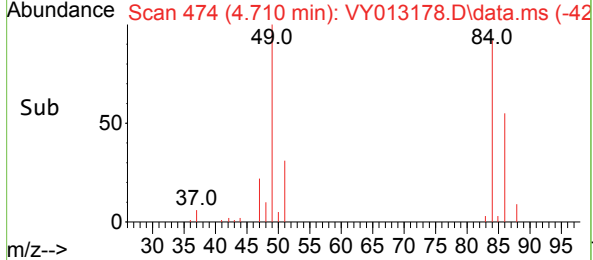
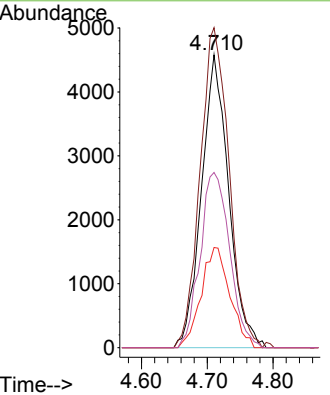
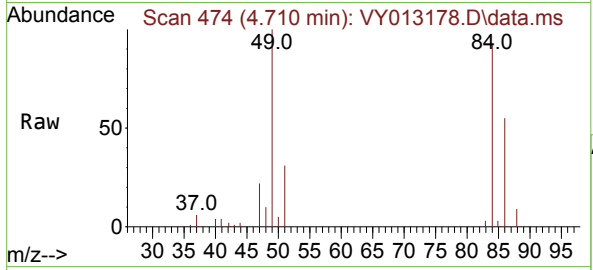




#20
 Methylene Chloride
 Concen: 8.141 ug/l
 RT: 4.710 min Scan# 41
 Delta R.T. -0.006 min
 Lab File: VY013178.D
 Acq: 03 Apr 2023 16:08

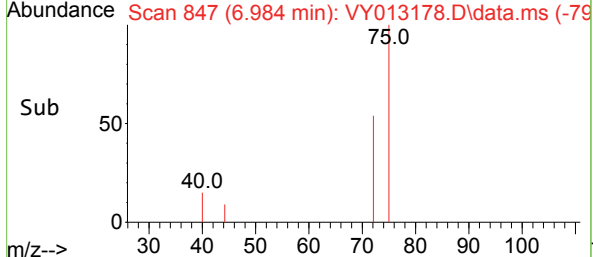
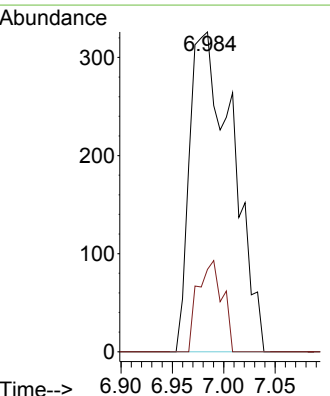
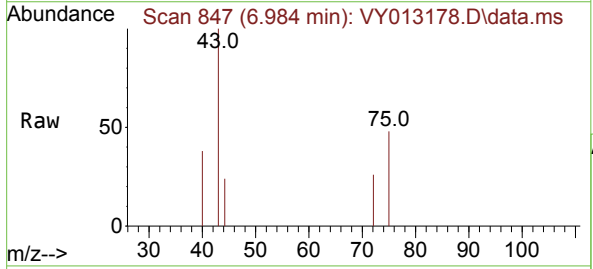
Instrument : MSVOA_Y
 ClientSampleId : SB-3B

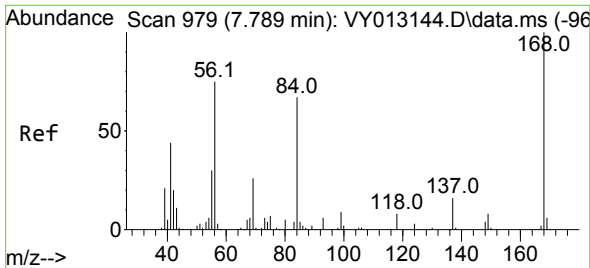
Tgt Ion	Resp	Lower	Upper
84	13179		
49	109.3	102.6	154.0
51	34.2	31.9	47.9
86	59.8	51.0	76.6



#25
 2-Butanone
 Concen: 2.510 ug/l
 RT: 6.984 min Scan# 847
 Delta R.T. 0.000 min
 Lab File: VY013178.D
 Acq: 03 Apr 2023 16:08

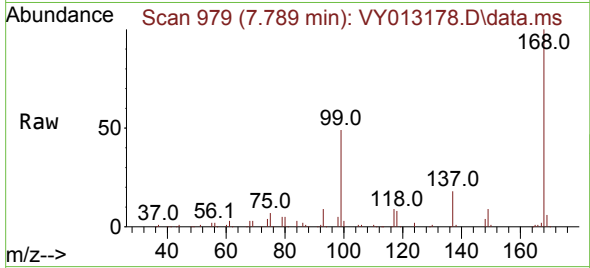
Tgt Ion	Resp	Lower	Upper
43	948		
72	25.8	21.0	31.4



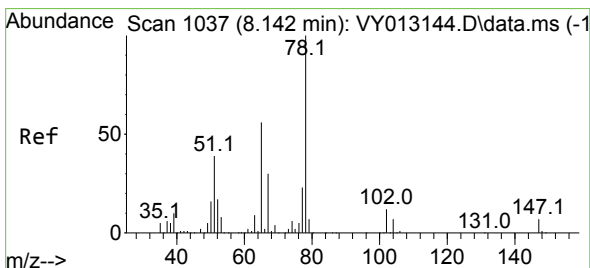
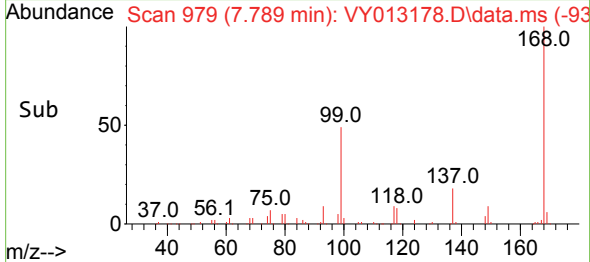
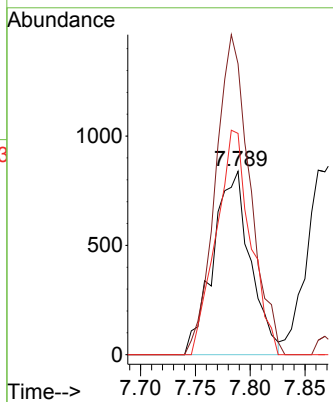


#31
 Cyclohexane
 Concen: 1.230 ug/l
 RT: 7.789 min Scan# 91
 Delta R.T. -0.000 min
 Lab File: VY013178.D
 Acq: 03 Apr 2023 16:08

Instrument : MSVOA_Y
 ClientSampleId : SB-3B

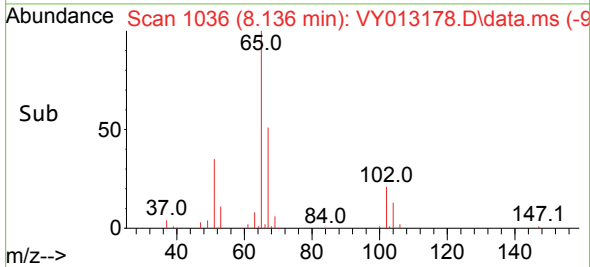
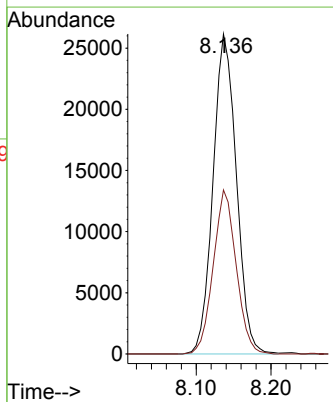
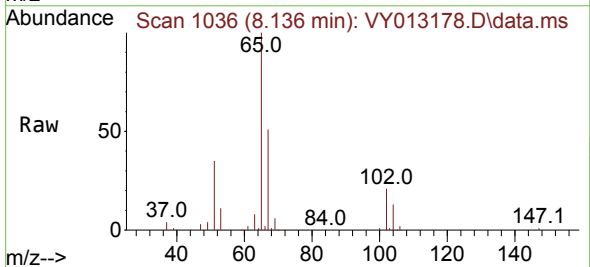


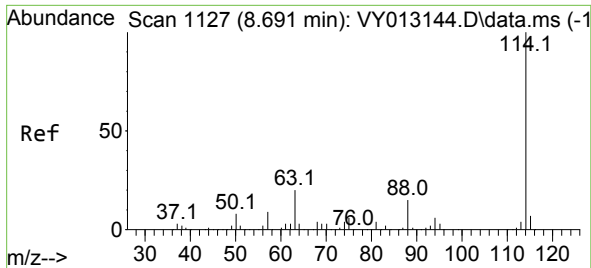
Tgt Ion: 56 Resp: 1984
 Ion Ratio Lower Upper
 56 100
 69 158.6 25.7 38.5#
 84 120.6 64.3 96.5#



#33
 1,2-Dichloroethane-d4
 Concen: 57.483 ug/l
 RT: 8.136 min Scan# 1036
 Delta R.T. -0.006 min
 Lab File: VY013178.D
 Acq: 03 Apr 2023 16:08

Tgt Ion: 65 Resp: 56789
 Ion Ratio Lower Upper
 65 100
 67 50.4 0.0 104.0



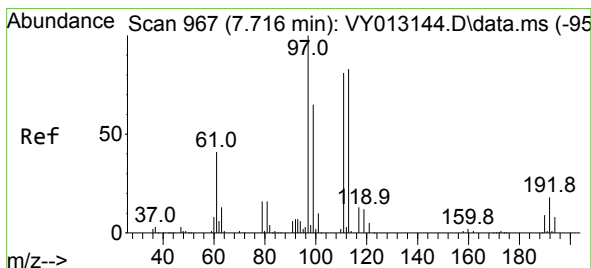
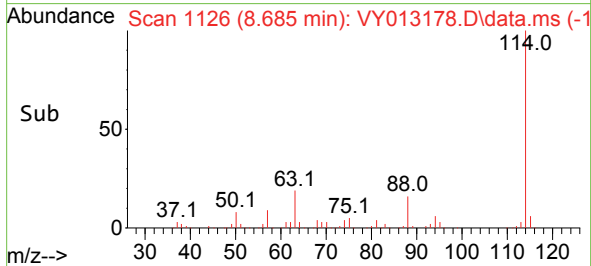
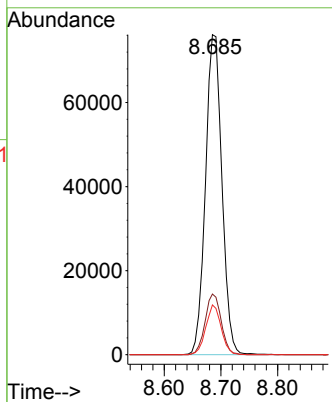
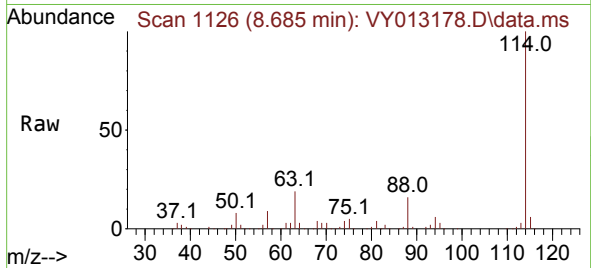


#34
 1,4-Difluorobenzene
 Concen: 50.000 ug/l
 RT: 8.685 min Scan# 1126
 Delta R.T. -0.006 min
 Lab File: VY013178.D
 Acq: 03 Apr 2023 16:08

Instrument : MSVOA_Y
 ClientSampleId : SB-3B

Tgt Ion:114 Resp: 153501

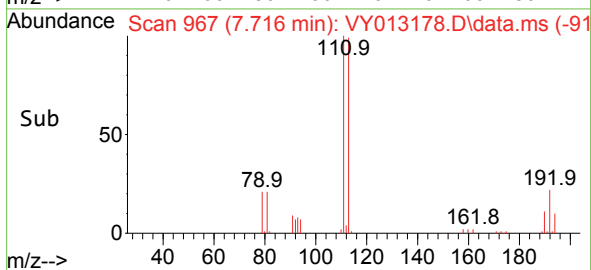
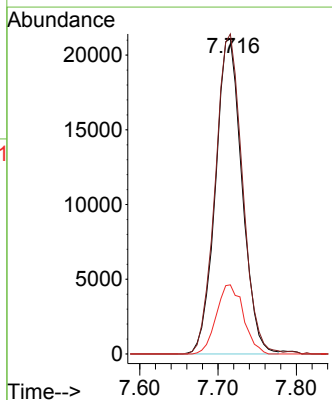
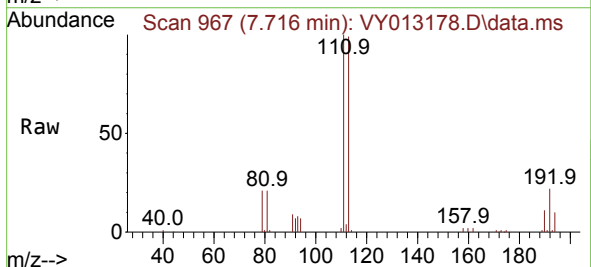
Ion	Ratio	Lower	Upper
114	100		
63	18.9	0.0	37.4
88	15.5	0.0	28.6

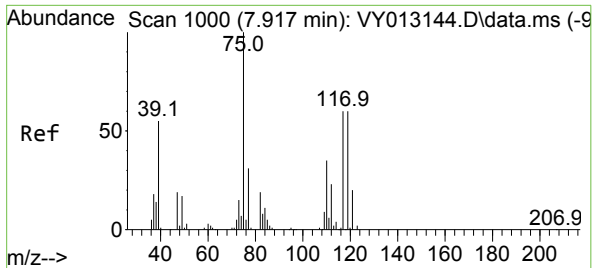


#35
 Dibromofluoromethane
 Concen: 49.657 ug/l
 RT: 7.716 min Scan# 967
 Delta R.T. -0.000 min
 Lab File: VY013178.D
 Acq: 03 Apr 2023 16:08

Tgt Ion:113 Resp: 49795

Ion	Ratio	Lower	Upper
113	100		
111	103.8	82.2	123.2
192	22.3	16.8	25.2

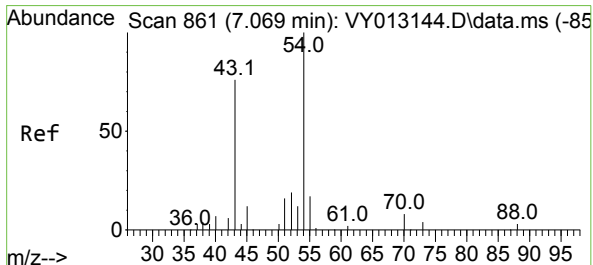
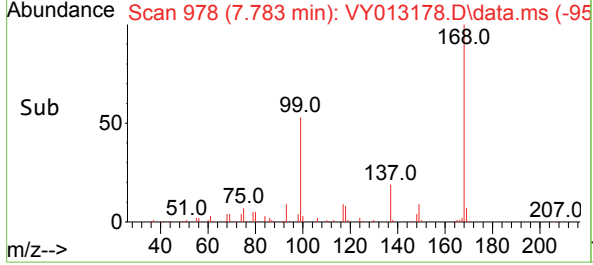
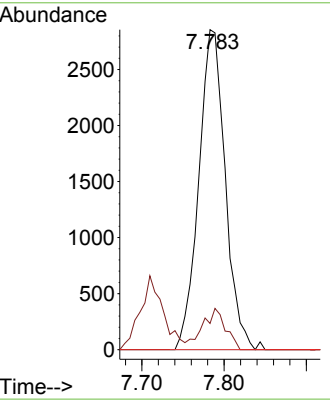
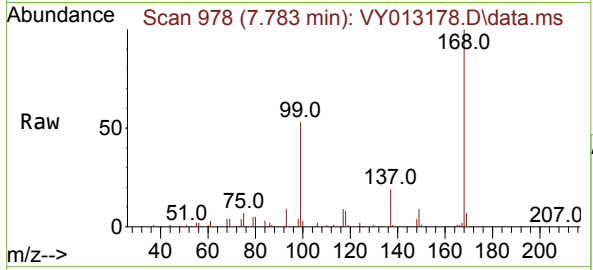




#36
 1,1-Dichloropropene
 Concen: 4.238 ug/l
 RT: 7.783 min Scan# 91
 Delta R.T. -0.134 min
 Lab File: VY013178.D
 Acq: 03 Apr 2023 16:08

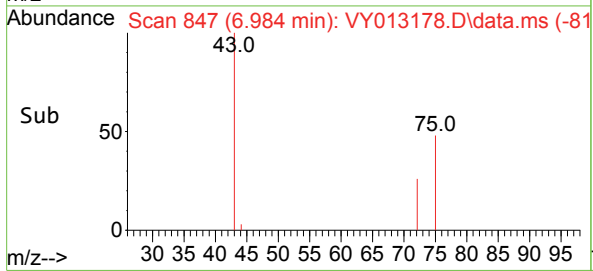
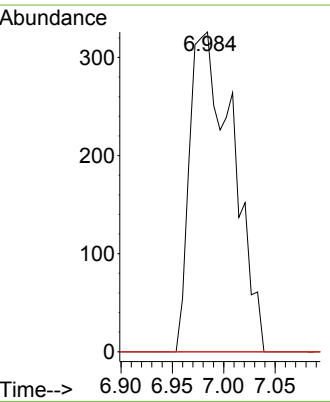
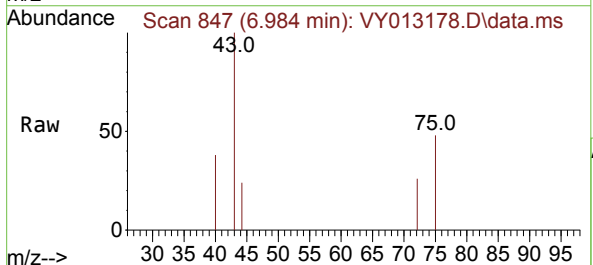
Instrument : MSVOA_Y
 ClientSampleId : SB-3B

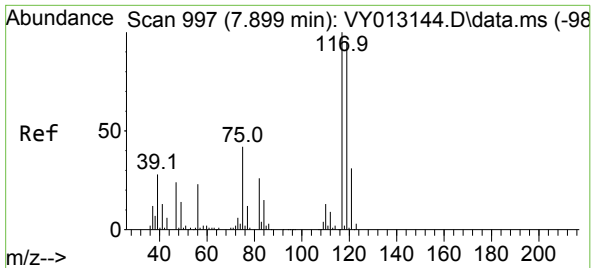
Tgt Ion	Resp	Lower	Upper
75	6398		
75	100		
110	11.2	17.8	53.3#
77	0.0	25.0	37.4#



#37
 Ethyl Acetate
 Concen: 1.105 ug/l
 RT: 6.984 min Scan# 847
 Delta R.T. -0.085 min
 Lab File: VY013178.D
 Acq: 03 Apr 2023 16:08

Tgt Ion	Resp	Lower	Upper
43	948		
43	100		
61	0.0	10.7	16.1#
70	0.0	7.8	11.8#

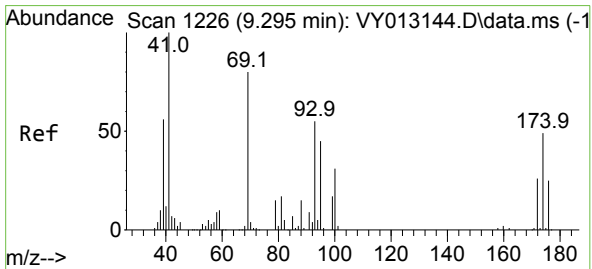
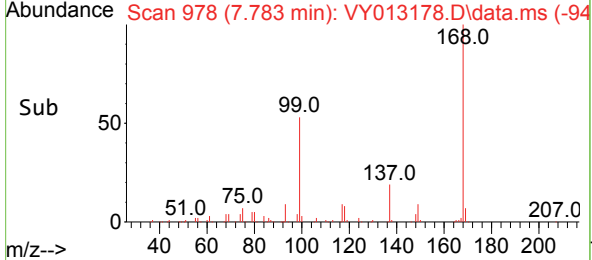
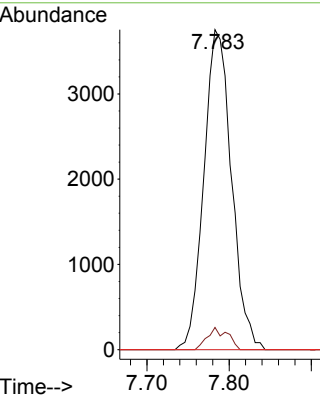
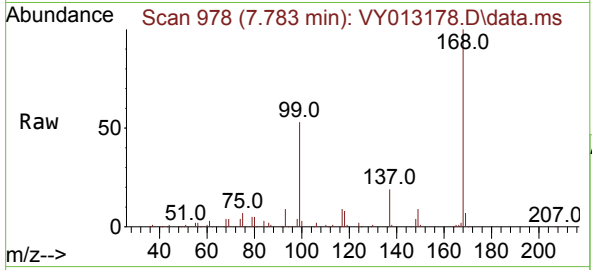




#38
 Carbon Tetrachloride
 Concen: 5.262 ug/l
 RT: 7.783 min Scan# 91
 Delta R.T. -0.116 min
 Lab File: VY013178.D
 Acq: 03 Apr 2023 16:08

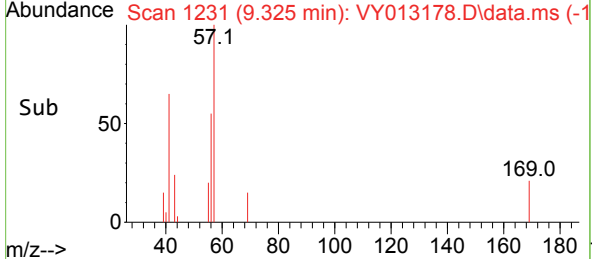
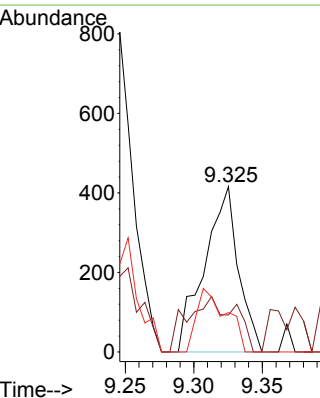
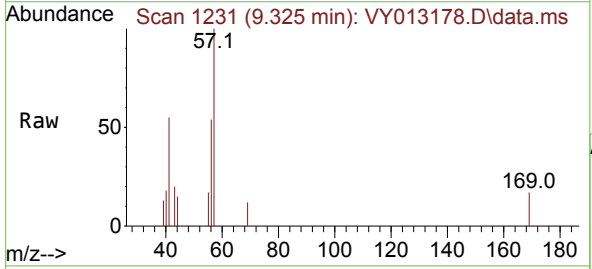
Instrument : MSVOA_Y
 Client Sample Id : SB-3B

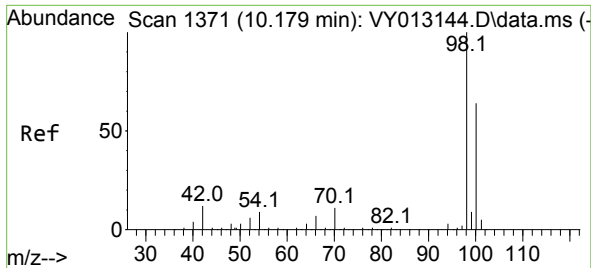
Tgt Ion	Resp	Lower	Upper
117	8765		
119	6.9	77.2	115.8#
121	0.0	24.7	37.1#



#48
 Methyl methacrylate
 Concen: 1.004 ug/l
 RT: 9.325 min Scan# 1231
 Delta R.T. 0.030 min
 Lab File: VY013178.D
 Acq: 03 Apr 2023 16:08

Tgt Ion	Resp	Lower	Upper
41	718		
69	46.7	64.1	96.1#
39	33.6	44.0	66.0#

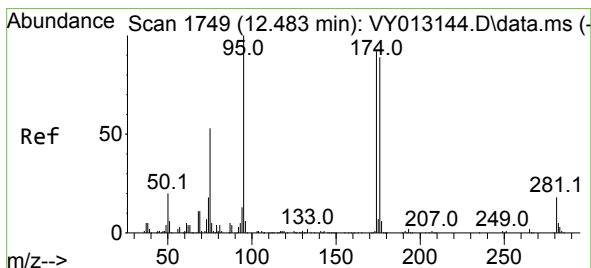
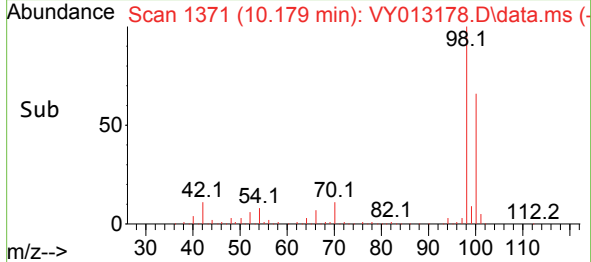
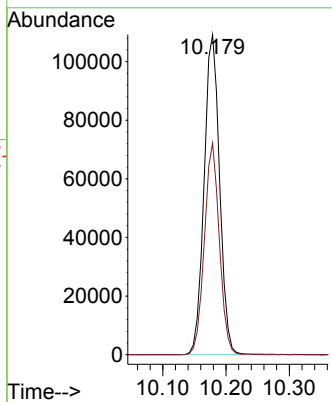
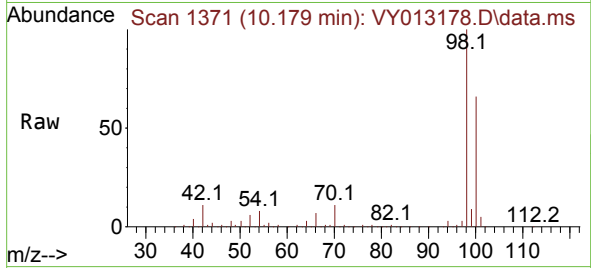




#50
 Toluene-d8
 Concen: 49.141 ug/l
 RT: 10.179 min Scan# 11
 Delta R.T. -0.000 min
 Lab File: VY013178.D
 Acq: 03 Apr 2023 16:08

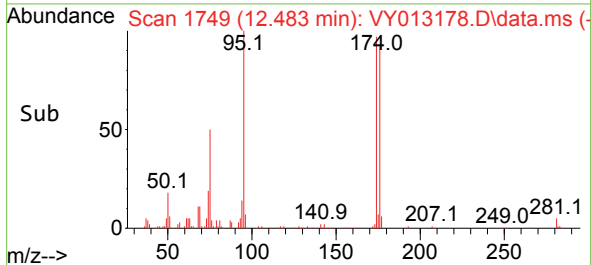
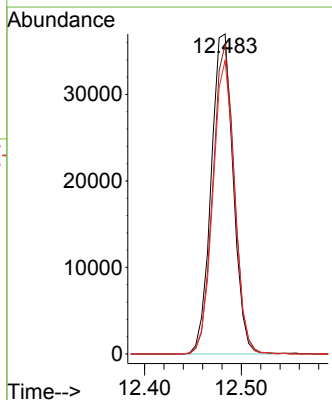
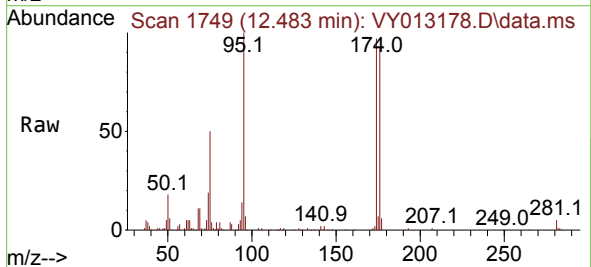
Instrument :
 MSVOA_Y
 ClientSampleId :
 SB-3B

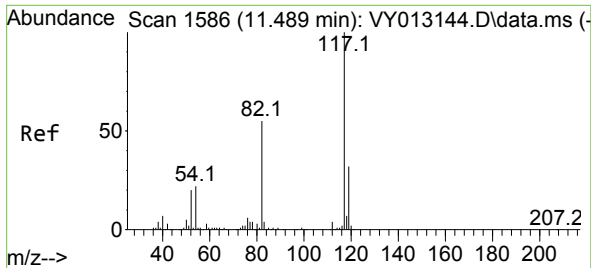
Tgt Ion: 98 Resp: 186030
 Ion Ratio Lower Upper
 98 100
 100 63.9 50.9 76.3



#62
 4-Bromofluorobenzene
 Concen: 47.581 ug/l
 RT: 12.483 min Scan# 1749
 Delta R.T. 0.000 min
 Lab File: VY013178.D
 Acq: 03 Apr 2023 16:08

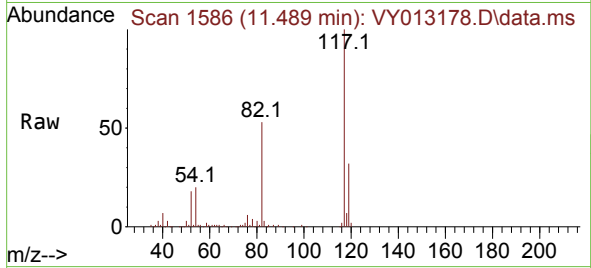
Tgt Ion: 95 Resp: 58631
 Ion Ratio Lower Upper
 95 100
 174 94.4 0.0 176.6
 176 90.1 0.0 170.2





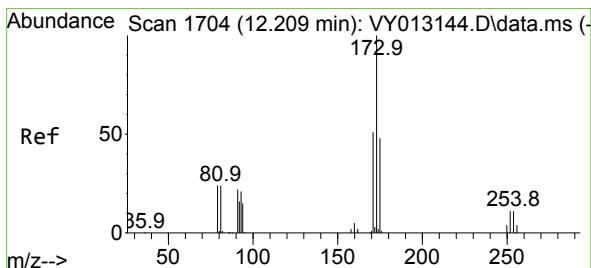
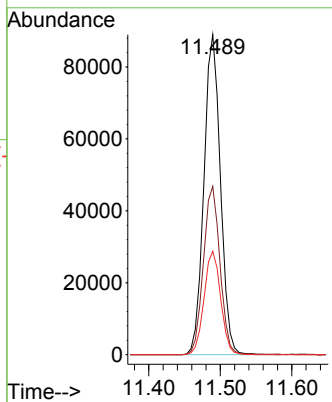
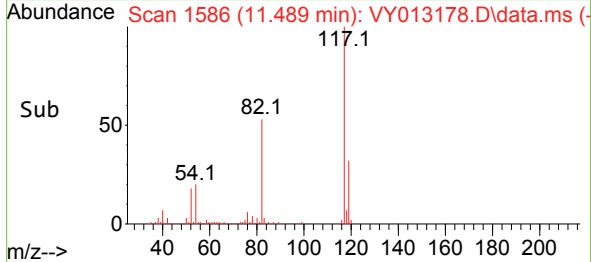
#63
 Chlorobenzene-d5
 Concen: 50.000 ug/l
 RT: 11.489 min Scan# 117
 Delta R.T. 0.000 min
 Lab File: VY013178.D
 Acq: 03 Apr 2023 16:08

Instrument : MSVOA_Y
 ClientSampleId : SB-3B

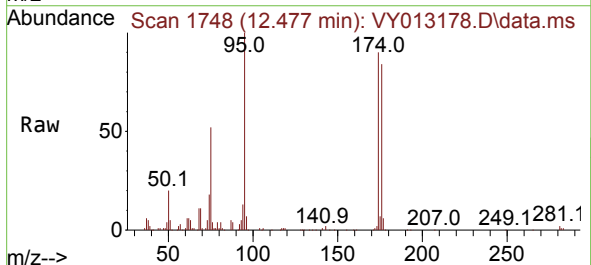


Tgt Ion:117 Resp: 142676

Ion	Ratio	Lower	Upper
117	100		
82	52.6	45.4	68.0
119	32.3	25.6	38.4

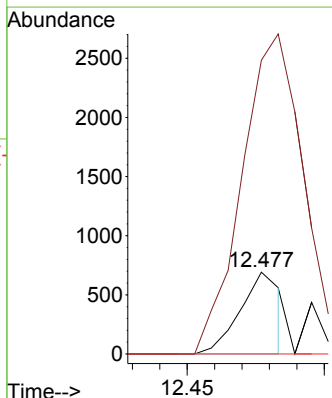
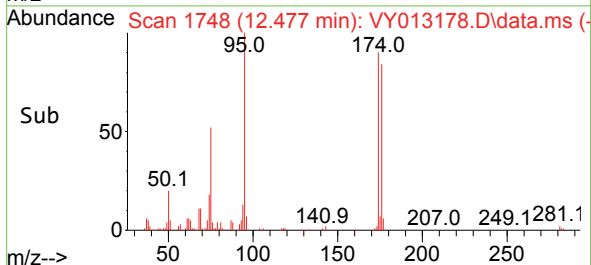


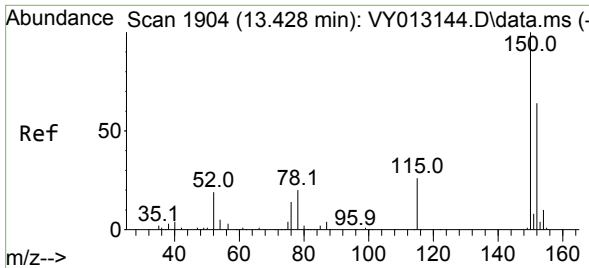
#71
 Bromoform
 Concen: 1.005 ug/l
 RT: 12.477 min Scan# 1748
 Delta R.T. 0.268 min
 Lab File: VY013178.D
 Acq: 03 Apr 2023 16:08



Tgt Ion:173 Resp: 708

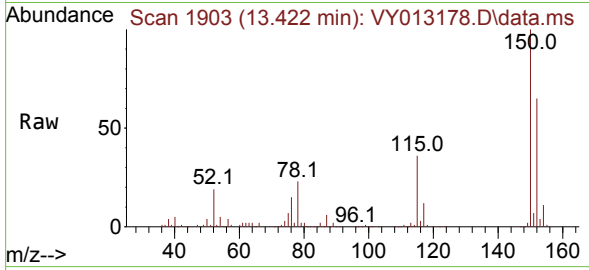
Ion	Ratio	Lower	Upper
173	100		
175	0.0	25.0	75.0#
254	0.0	0.2	0.2#



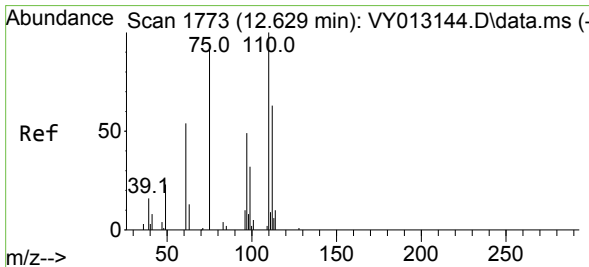
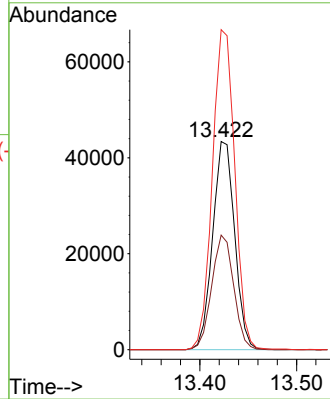
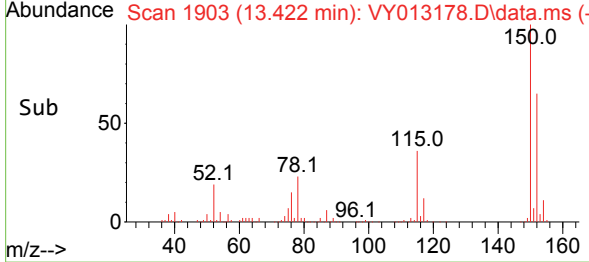


#72
 1,4-Dichlorobenzene-d4
 Concen: 50.000 ug/l
 RT: 13.422 min Scan# 1903
 Delta R.T. -0.006 min
 Lab File: VY013178.D
 Acq: 03 Apr 2023 16:08

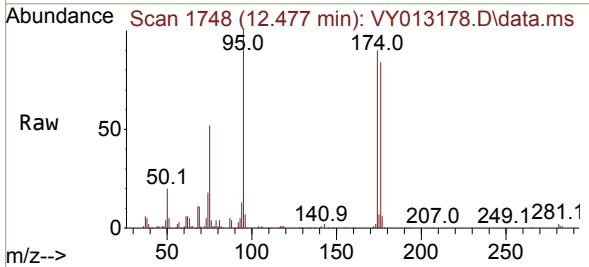
Instrument : MSVOA_Y
 ClientSampleId : SB-3B



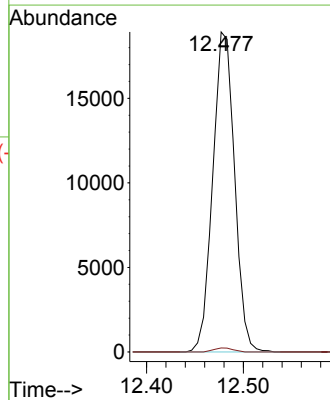
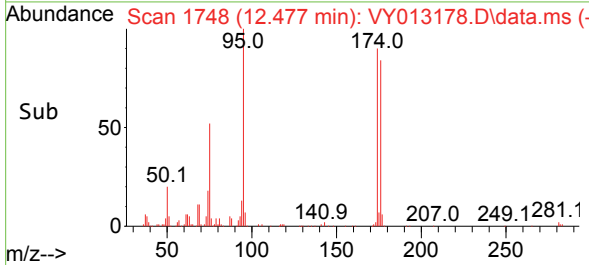
Tgt Ion:152 Resp: 68553
 Ion Ratio Lower Upper
 152 100
 115 55.0 27.1 81.3
 150 156.5 0.0 347.8

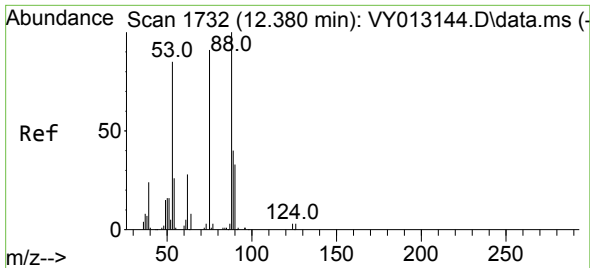


#76
 1,2,3-Trichloropropane
 Concen: 38.515 ug/l
 RT: 12.477 min Scan# 1748
 Delta R.T. -0.152 min
 Lab File: VY013178.D
 Acq: 03 Apr 2023 16:08



Tgt Ion: 75 Resp: 29661
 Ion Ratio Lower Upper
 75 100
 77 1.1 0.0 0.0#

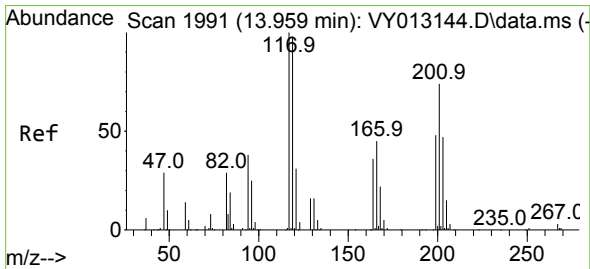
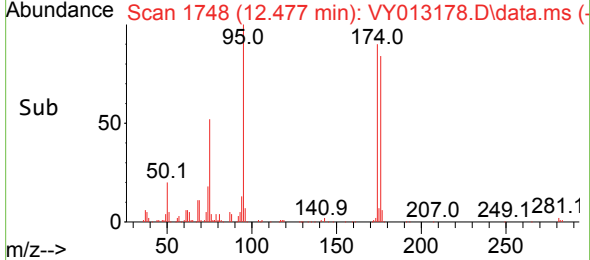
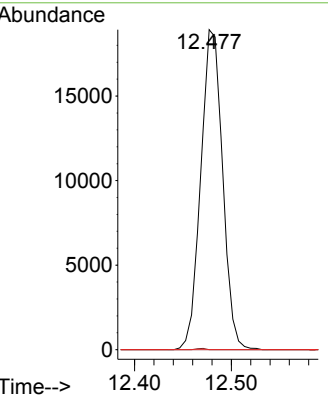
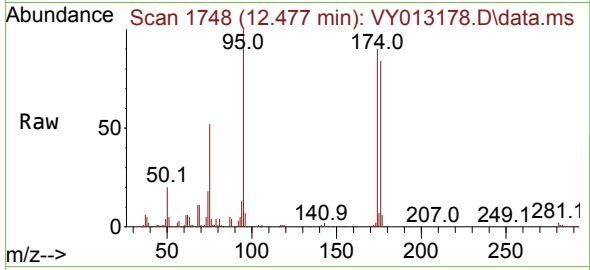




#81
 trans-1,4-Dichloro-2-butene
 Concen: 85.893 ug/l
 RT: 12.477 min Scan# 11
 Delta R.T. 0.097 min
 Lab File: VY013178.D
 Acq: 03 Apr 2023 16:08

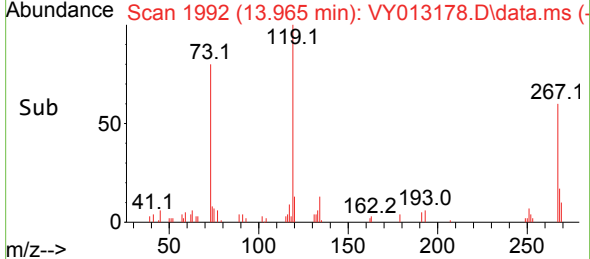
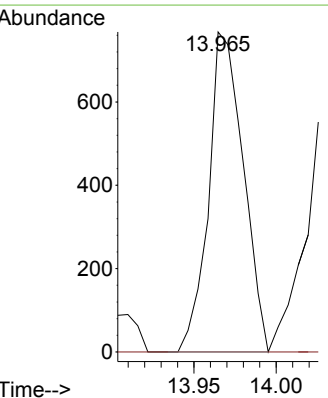
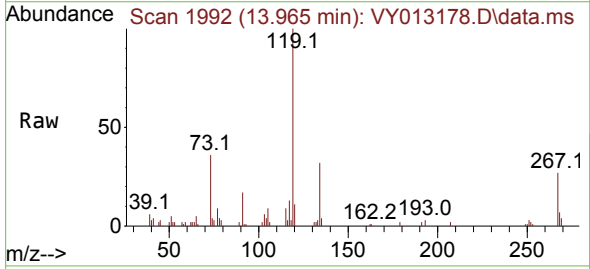
Instrument :
 MSVOA_Y
 ClientSampleId :
 SB-3B

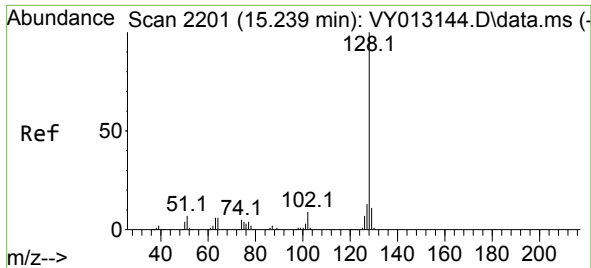
Tgt Ion: 75 Resp: 29661
 Ion Ratio Lower Upper
 75 100
 53 0.2 73.4 110.0#
 89 0.0 36.6 55.0#



#90
 Hexachloroethane
 Concen: 1.281 ug/l
 RT: 13.965 min Scan# 1992
 Delta R.T. 0.006 min
 Lab File: VY013178.D
 Acq: 03 Apr 2023 16:08

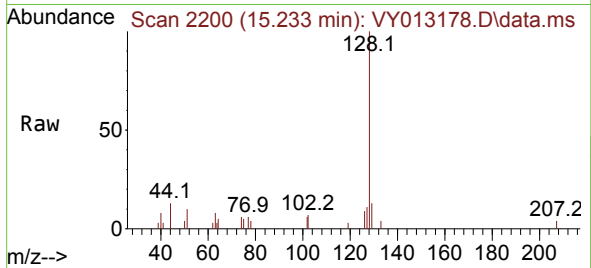
Tgt Ion:117 Resp: 1127
 Ion Ratio Lower Upper
 117 100
 201 0.0 39.4 118.1#





#95
 Naphthalene
 Concen: 4.463 ug/l
 RT: 15.233 min Scan# 21
 Delta R.T. -0.006 min
 Lab File: VY013178.D
 Acq: 03 Apr 2023 16:08

Instrument :
 MSVOA_Y
 ClientSampleId :
 SB-3B



Tgt Ion:128 Resp: 3384

Ion	Ratio	Lower	Upper
128	100		
127	13.0	10.3	15.5
129	14.4	8.6	13.0#

