

Data Path : Z:\voasrv\HPCHEM1\MSVOA_Y\Data\VY040424\
 Data File : VY017852.D
 Acq On : 04 Apr 2024 14:21
 Operator : SY/MD
 Sample : P1980-01
 Misc : 5.53g/5.0mL/MSVOA_Y/SOIL/B
 ALS Vial : 14 Sample Multiplier: 1

Instrument :
 MSVOA_Y
 ClientSampleId :
 WC1-GRAB-10-11RE

Quant Time: Apr 05 00:47:22 2024
 Quant Method : Z:\voasrv\HPCHEM1\MSVOA_Y\methods\82Y032924S.M
 Quant Title : SW846 8260
 QLast Update : Sat Mar 30 05:58:13 2024
 Response via : Initial Calibration

Compound	R.T.	QIon	Response	Conc Units	Dev(Min)

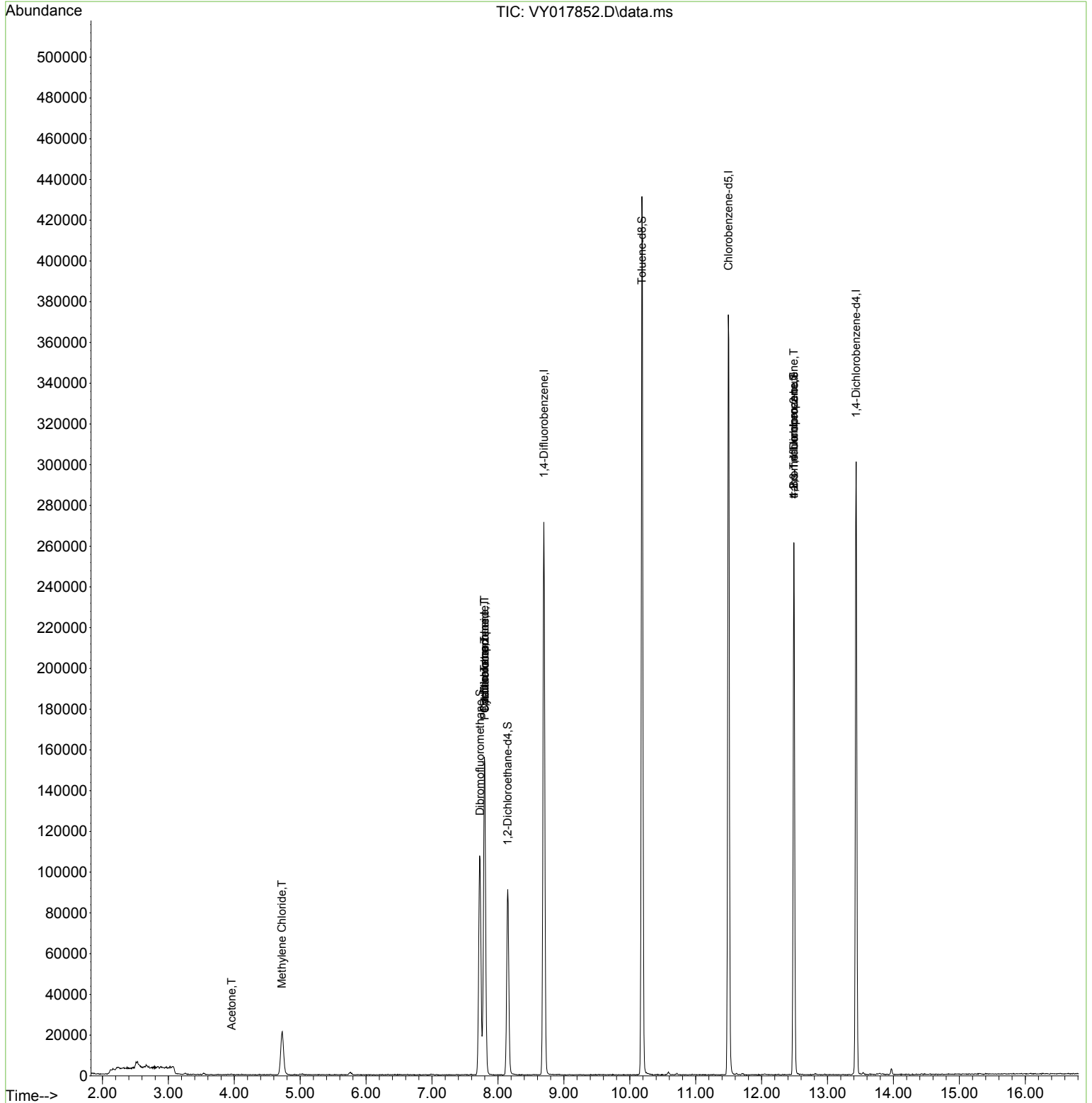
Internal Standards					
1) Pentafluorobenzene	7.801	168	124622	50.000 ug/l	0.00
34) 1,4-Difluorobenzene	8.697	114	236407	50.000 ug/l	0.00
63) Chlorobenzene-d5	11.496	117	212596	50.000 ug/l	0.00
72) 1,4-Dichlorobenzene-d4	13.434	152	78565	50.000 ug/l	0.00
System Monitoring Compounds					
33) 1,2-Dichloroethane-d4	8.149	65	71589	66.384 ug/l	0.00
Spiked Amount	50.000	Range 50 - 163	Recovery	= 132.760%	
35) Dibromofluoromethane	7.728	113	76602	56.075 ug/l	0.01
Spiked Amount	50.000	Range 54 - 147	Recovery	= 112.140%	
50) Toluene-d8	10.185	98	277397	54.361 ug/l	0.00
Spiked Amount	50.000	Range 58 - 134	Recovery	= 108.720%	
62) 4-Bromofluorobenzene	12.489	95	70439	45.370 ug/l	0.00
Spiked Amount	50.000	Range 30 - 143	Recovery	= 90.740%	
Target Compounds					
				Qvalue	
16) Acetone	3.960	43	533	2.391 ug/l #	36
20) Methylene Chloride	4.722	84	16851	10.224 ug/l	97
31) Cyclohexane	7.795	56	2761	1.453 ug/l #	26
36) 1,1-Dichloropropene	7.795	75	9838	4.936 ug/l #	47
38) Carbon Tetrachloride	7.795	117	11986	5.793 ug/l #	18
51) 4-Methyl-2-Pentanone	10.185	43	1090	Below Cal #	1
59) 2-Hexanone	10.715	43	250	Below Cal #	19
69) o-Xylene	12.044	106	31	Below Cal #	1
70) Styrene	12.056	104	155	Below Cal #	48
74) N-amyl acetate	12.111	43	20	Below Cal #	37
76) 1,2,3-Trichloropropane	12.489	75	39987	55.853 ug/l #	100
81) trans-1,4-Dichloro-2-b...	12.489	75	39987	108.451 ug/l #	16

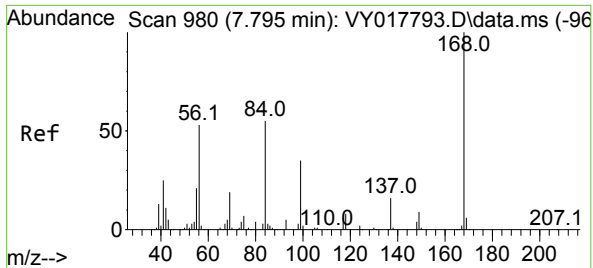
(#) = qualifier out of range (m) = manual integration (+) = signals summed

Data Path : Z:\voasrv\HPCHEM1\MSVOA_Y\Data\VY040424\
 Data File : VY017852.D
 Acq On : 04 Apr 2024 14:21
 Operator : SY/MD
 Sample : P1980-01
 Misc : 5.53g/5.0mL/MSVOA_Y/SOIL/B
 ALS Vial : 14 Sample Multiplier: 1

Instrument :
 MSVOA_Y
ClientSampleId :
 WC1-GRAB-10-11RE

Quant Time: Apr 05 00:47:22 2024
 Quant Method : Z:\voasrv\HPCHEM1\MSVOA_Y\methods\82Y032924S.M
 Quant Title : SW846 8260
 QLast Update : Sat Mar 30 05:58:13 2024
 Response via : Initial Calibration

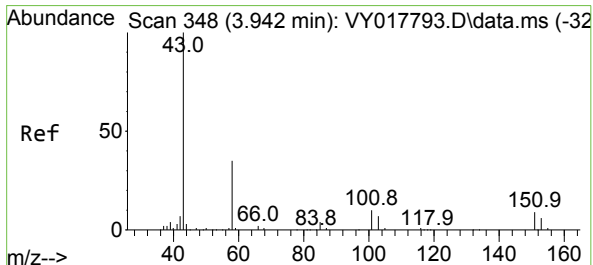
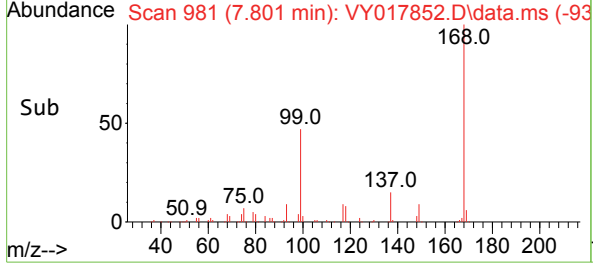
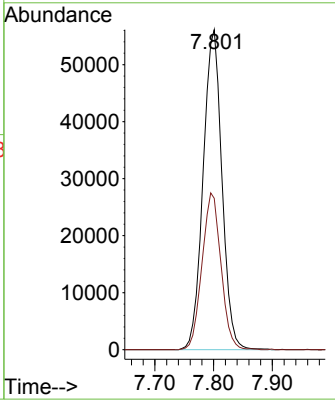
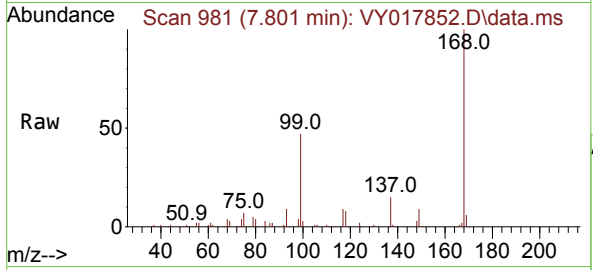




#1
 Pentafluorobenzene
 Concen: 50.000 ug/l
 RT: 7.801 min Scan# 91
 Delta R.T. 0.006 min
 Lab File: VY017852.D
 Acq: 04 Apr 2024 14:21

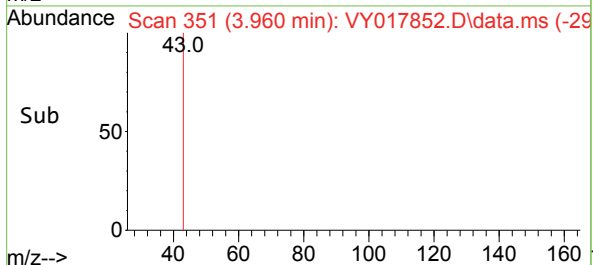
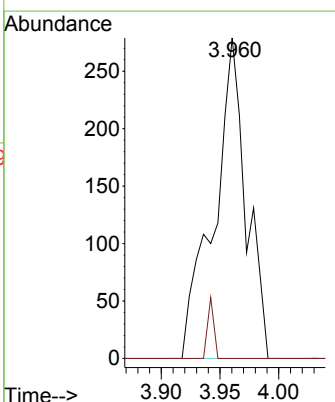
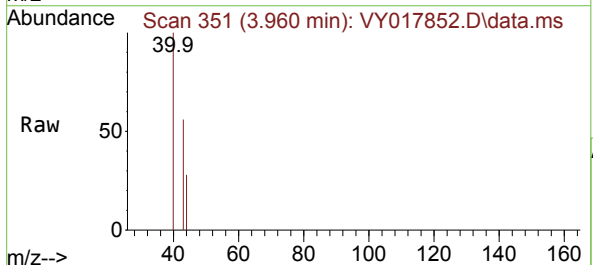
Instrument : MSVOA_Y
 ClientSampleId : WC1-GRAB-10-11RE

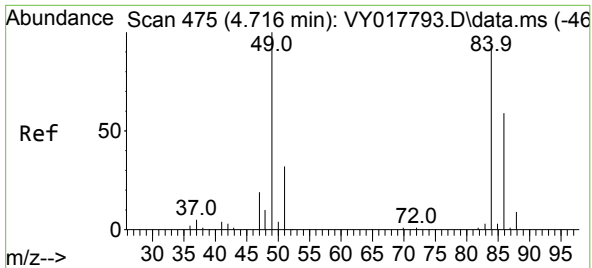
Tgt Ion	Resp	Lower	Upper
168	100		
99	47.3	39.1	58.7



#16
 Acetone
 Concen: 2.391 ug/l
 RT: 3.960 min Scan# 351
 Delta R.T. 0.018 min
 Lab File: VY017852.D
 Acq: 04 Apr 2024 14:21

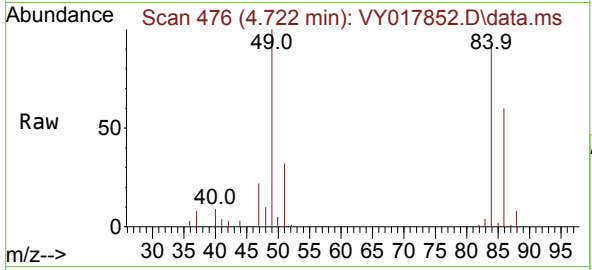
Tgt Ion	Resp	Lower	Upper
43	100		
58	0.0	31.7	47.5





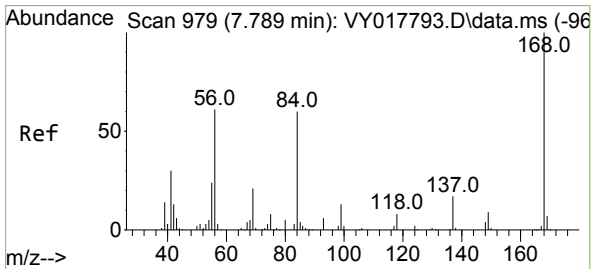
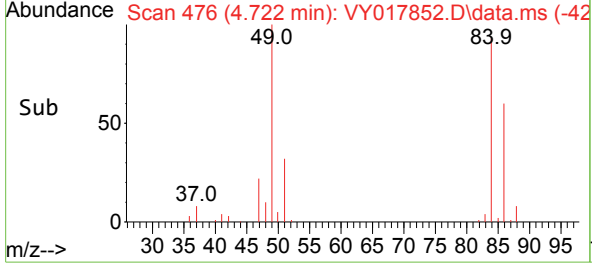
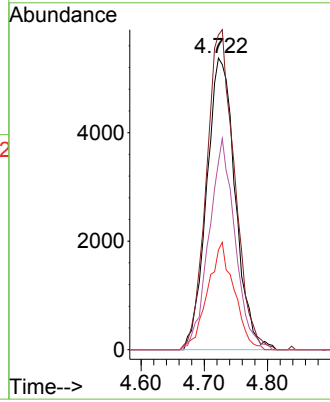
#20
 Methylene Chloride
 Concen: 10.224 ug/l
 RT: 4.722 min Scan# 41
 Delta R.T. 0.006 min
 Lab File: VY017852.D
 Acq: 04 Apr 2024 14:21

Instrument :
 MSVOA_Y
 ClientSampleId :
 WC1-GRAB-10-11RE

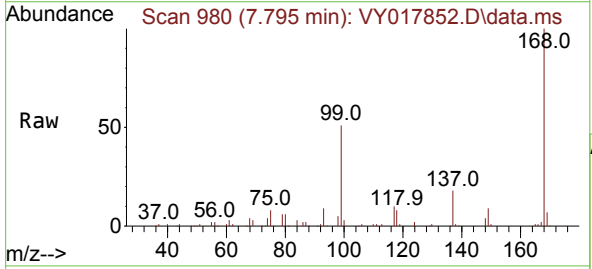


Tgt Ion: 84 Resp: 16851

Ion	Ratio	Lower	Upper
84	100		
49	107.9	84.4	126.6
51	34.2	26.0	39.0
86	64.3	49.5	74.3

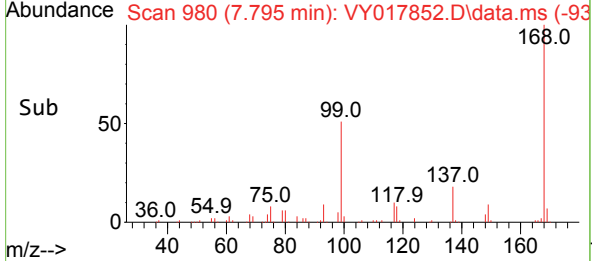
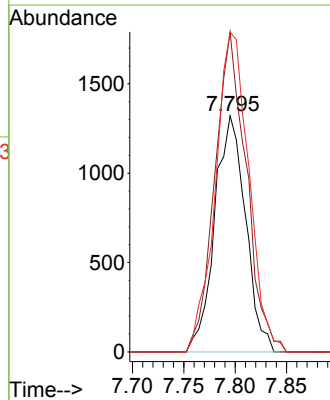


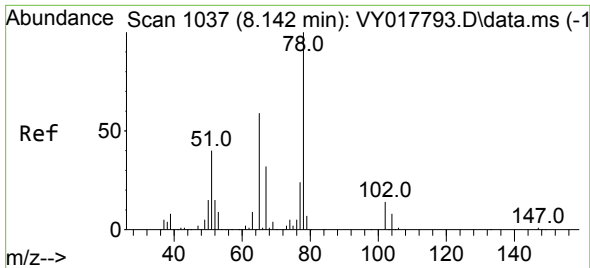
#31
 Cyclohexane
 Concen: 1.453 ug/l
 RT: 7.795 min Scan# 980
 Delta R.T. 0.006 min
 Lab File: VY017852.D
 Acq: 04 Apr 2024 14:21



Tgt Ion: 56 Resp: 2761

Ion	Ratio	Lower	Upper
56	100		
69	135.4	28.7	43.1#
84	135.5	77.7	116.5#

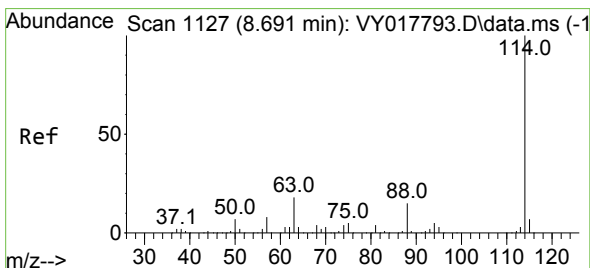
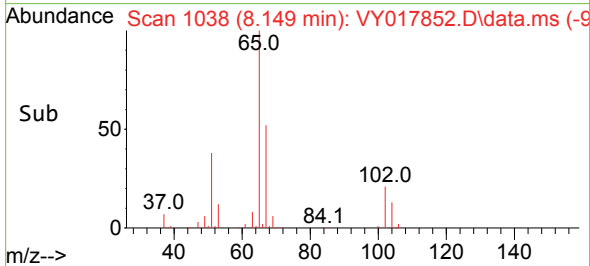
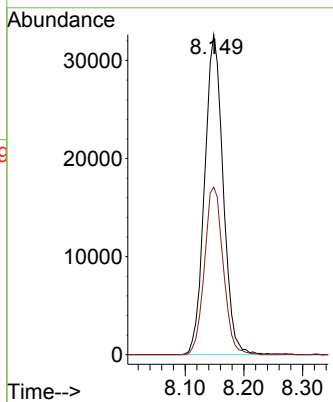
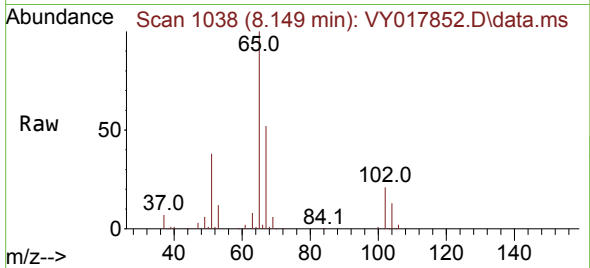




#33
 1,2-Dichloroethane-d4
 Concen: 66.384 ug/l
 RT: 8.149 min Scan# 1038
 Delta R.T. 0.006 min
 Lab File: VY017852.D
 Acq: 04 Apr 2024 14:21

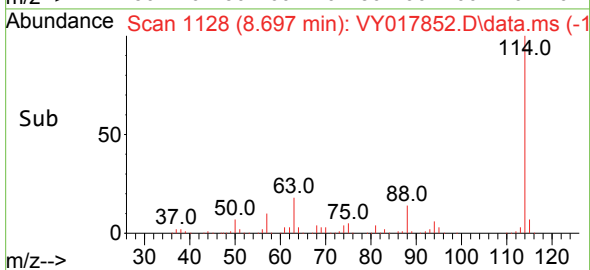
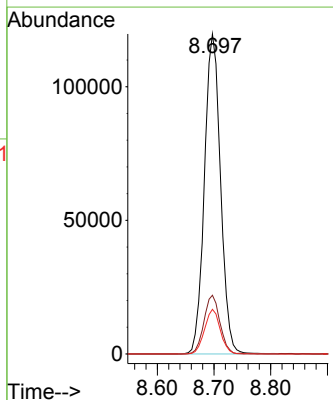
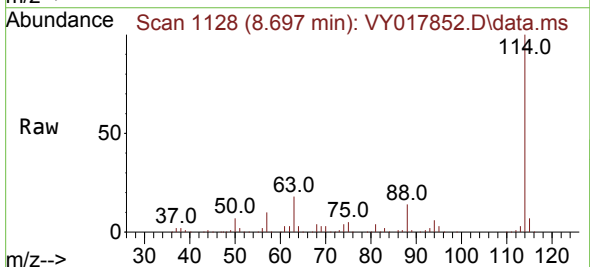
Instrument : MSVOA_Y
 ClientSampleId : WC1-GRAB-10-11RE

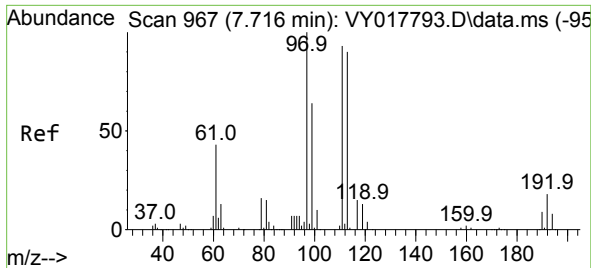
Tgt Ion: 65 Resp: 71589
 Ion Ratio Lower Upper
 65 100
 67 52.9 0.0 109.6



#34
 1,4-Difluorobenzene
 Concen: 50.000 ug/l
 RT: 8.697 min Scan# 1128
 Delta R.T. 0.006 min
 Lab File: VY017852.D
 Acq: 04 Apr 2024 14:21

Tgt Ion:114 Resp: 236407
 Ion Ratio Lower Upper
 114 100
 63 18.3 0.0 35.0
 88 14.0 0.0 27.2

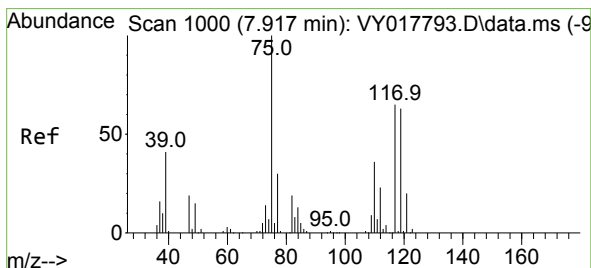
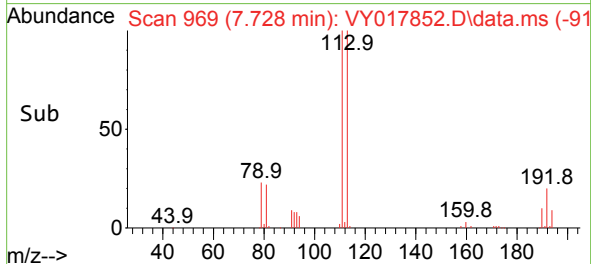
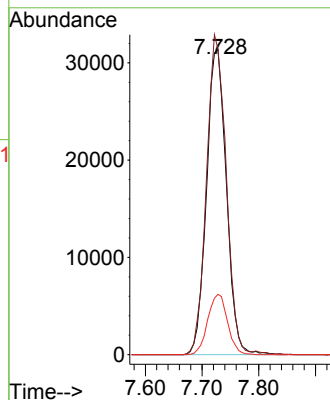
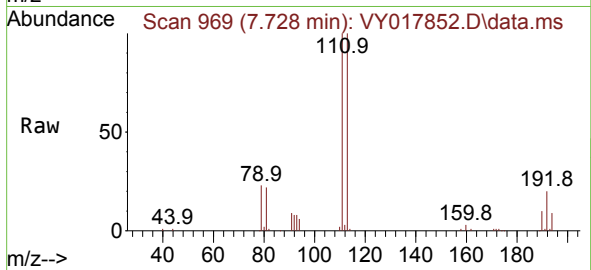




#35
 Dibromofluoromethane
 Concen: 56.075 ug/l
 RT: 7.728 min Scan# 90
 Delta R.T. 0.012 min
 Lab File: VY017852.D
 Acq: 04 Apr 2024 14:21

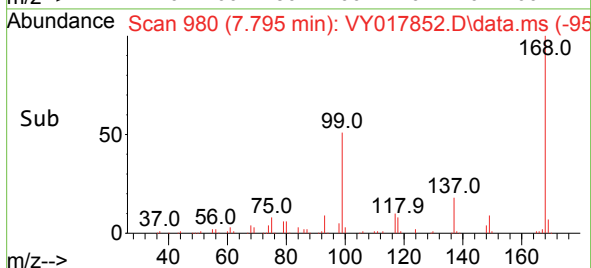
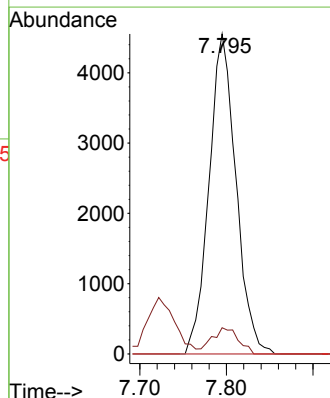
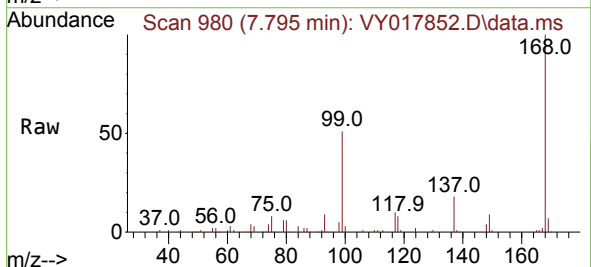
Instrument :
 MSVOA_Y
 ClientSampleId :
 WC1-GRAB-10-11RE

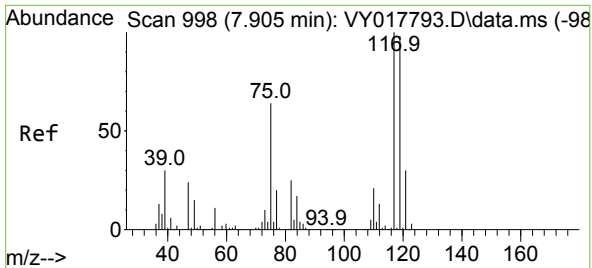
Tgt Ion:113 Resp: 76602
 Ion Ratio Lower Upper
 113 100
 111 104.1 82.2 123.4
 192 19.6 15.9 23.9



#36
 1,1-Dichloropropene
 Concen: 4.936 ug/l
 RT: 7.795 min Scan# 980
 Delta R.T. -0.122 min
 Lab File: VY017852.D
 Acq: 04 Apr 2024 14:21

Tgt Ion: 75 Resp: 9838
 Ion Ratio Lower Upper
 75 100
 110 8.1 19.0 57.0#
 77 0.0 25.3 37.9#



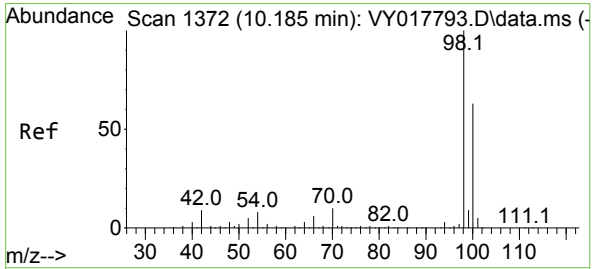
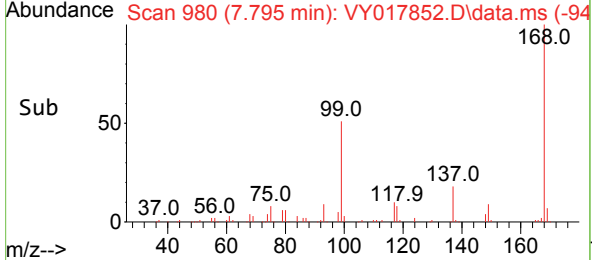
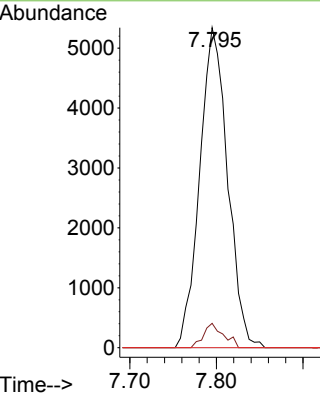
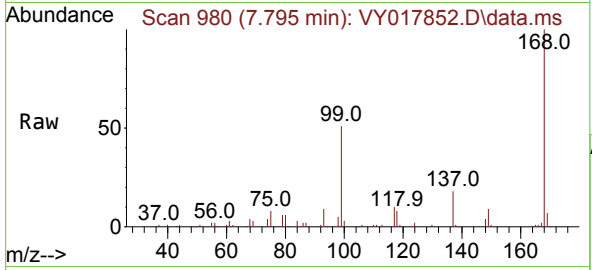


#38
 Carbon Tetrachloride
 Concen: 5.793 ug/l
 RT: 7.795 min Scan# 94
 Delta R.T. -0.110 min
 Lab File: VY017852.D
 Acq: 04 Apr 2024 14:21

Instrument : MSVOA_Y
 ClientSampleId : WC1-GRAB-10-11RE

Tgt Ion: 117 Resp: 11986

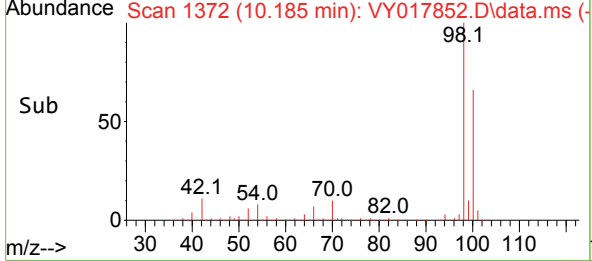
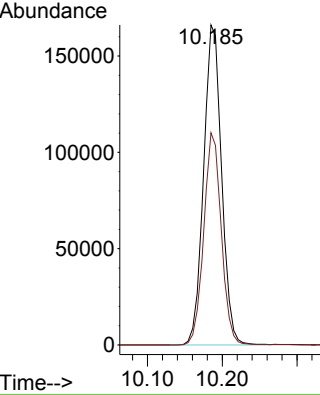
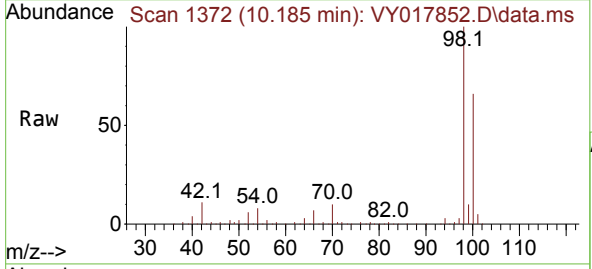
Ion	Ratio	Lower	Upper
117	100		
119	7.6	75.8	113.6#
121	0.0	24.0	36.0#

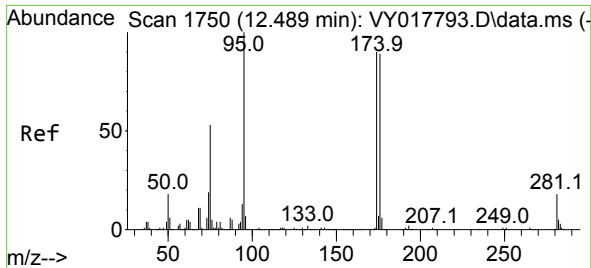


#50
 Toluene-d8
 Concen: 54.361 ug/l
 RT: 10.185 min Scan# 1372
 Delta R.T. 0.000 min
 Lab File: VY017852.D
 Acq: 04 Apr 2024 14:21

Tgt Ion: 98 Resp: 277397

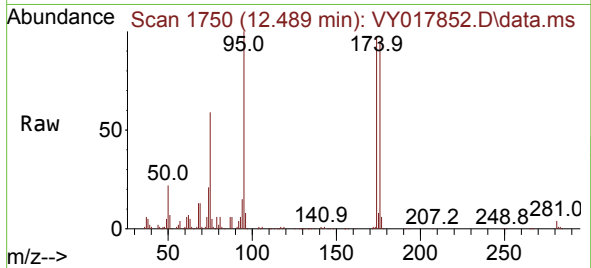
Ion	Ratio	Lower	Upper
98	100		
100	64.6	52.0	78.0



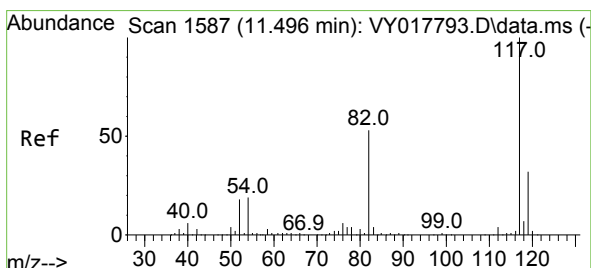
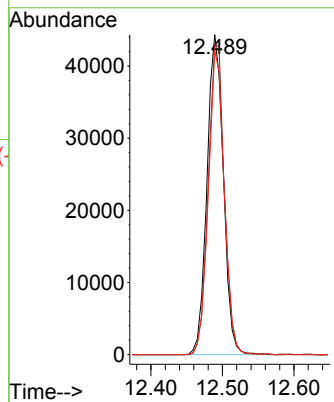
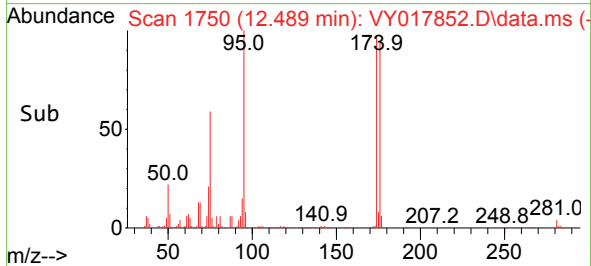


#62
 4-Bromofluorobenzene
 Concen: 45.370 ug/l
 RT: 12.489 min Scan# 1750
 Delta R.T. 0.000 min
 Lab File: VY017852.D
 Acq: 04 Apr 2024 14:21

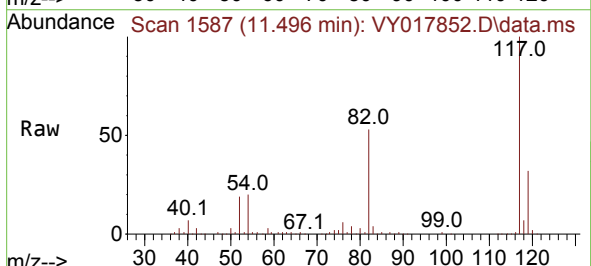
Instrument : MSVOA_Y
 ClientSampleId : WC1-GRAB-10-11RE



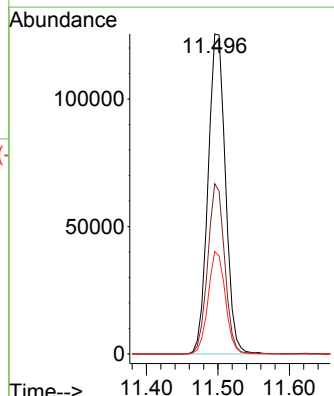
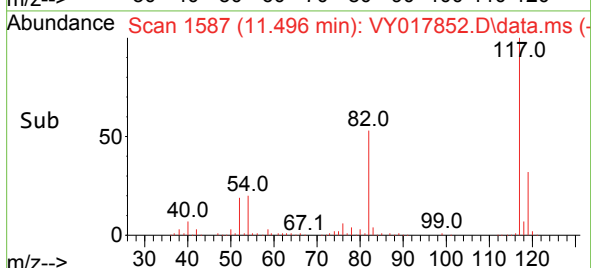
Tgt Ion: 95 Resp: 70439
 Ion Ratio Lower Upper
 95 100
 174 96.2 0.0 175.6
 176 92.0 0.0 171.4

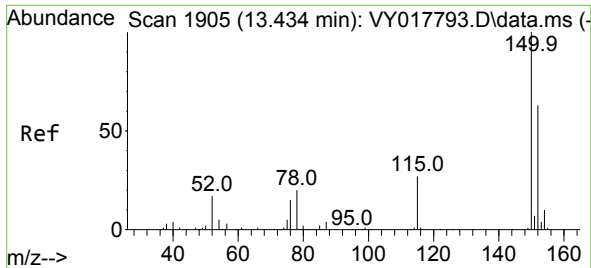


#63
 Chlorobenzene-d5
 Concen: 50.000 ug/l
 RT: 11.496 min Scan# 1587
 Delta R.T. 0.000 min
 Lab File: VY017852.D
 Acq: 04 Apr 2024 14:21



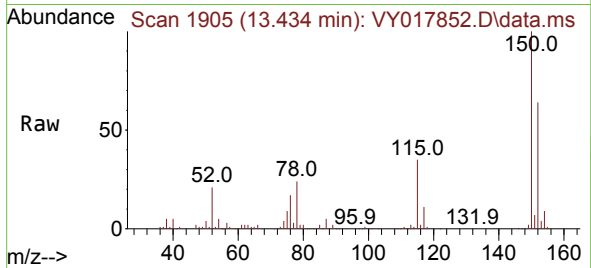
Tgt Ion: 117 Resp: 212596
 Ion Ratio Lower Upper
 117 100
 82 53.2 42.4 63.6
 119 32.0 25.9 38.9



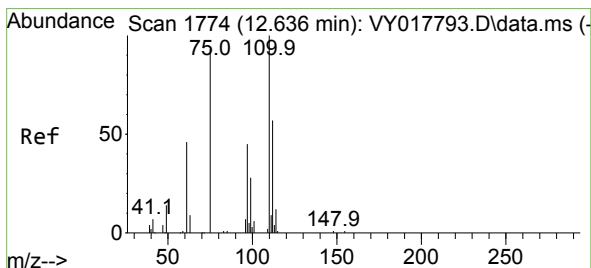
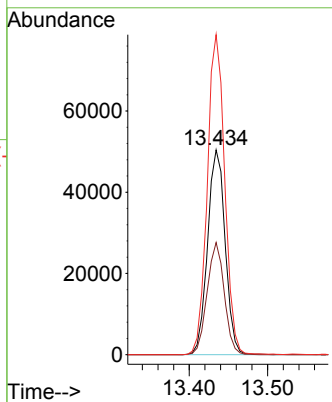
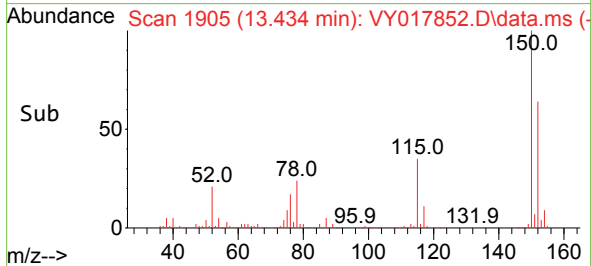


#72
 1,4-Dichlorobenzene-d4
 Concen: 50.000 ug/l
 RT: 13.434 min Scan# 1905
 Delta R.T. 0.000 min
 Lab File: VY017852.D
 Acq: 04 Apr 2024 14:21

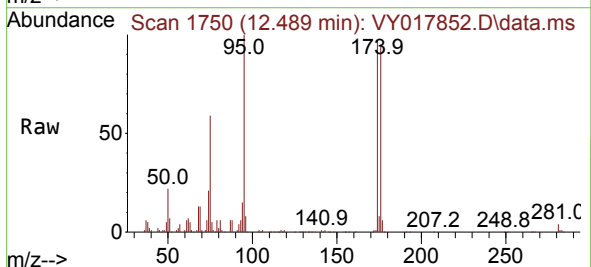
Instrument : MSVOA_Y
 ClientSampleId : WC1-GRAB-10-11RE



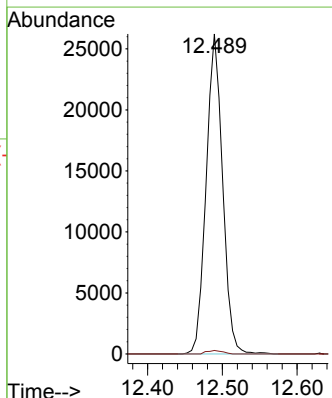
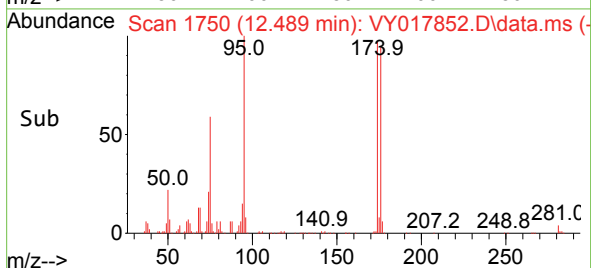
Tgt Ion:152 Resp: 78565
 Ion Ratio Lower Upper
 152 100
 115 53.4 28.2 84.7
 150 155.0 0.0 345.6

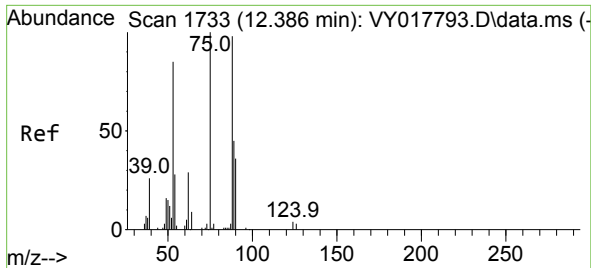


#76
 1,2,3-Trichloropropane
 Concen: 55.853 ug/l
 RT: 12.489 min Scan# 1750
 Delta R.T. -0.146 min
 Lab File: VY017852.D
 Acq: 04 Apr 2024 14:21



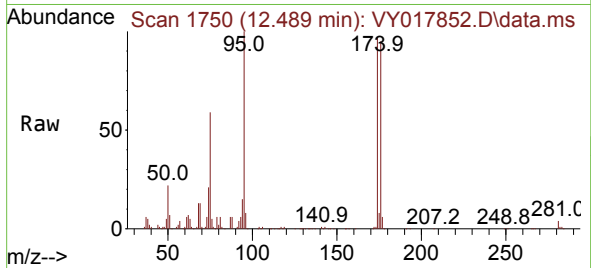
Tgt Ion: 75 Resp: 39987
 Ion Ratio Lower Upper
 75 100
 77 1.1 0.0 0.0#





#81
 trans-1,4-Dichloro-2-butene
 Concen: 108.451 ug/l
 RT: 12.489 min Scan# 1
 Delta R.T. 0.103 min
 Lab File: VY017852.D
 Acq: 04 Apr 2024 14:21

Instrument :
 MSVOA_Y
 ClientSampleId :
 WC1-GRAB-10-11RE



Tgt Ion: 75 Resp: 39987

Ion	Ratio	Lower	Upper
75	100		
53	0.0	66.8	100.2#
89	0.0	35.8	53.6#

