

Data Path : Z:\VOASRV\HPCHEM1\MSVOA Y\DATA\VY040820\
 Data File : VY002258.D
 Acq On : 08 Apr 2020 18:25
 Operator : SY/MD
 Sample : L2201-04
 Misc : 6.15G/5ML/MSVOA Y/SOIL
 ALS Vial : 18 Sample Multiplier: 1

Instrument :
 MSVOA_Y
 ClientSampleId :
 CG-SUB-VO

Quant Time: Apr 09 02:57:14 2020
 Quant Method : Z:\VOASRV\HPCHEM1\MSVOA_Y\METHODS\82Y040820S.M
 Quant Title : SW846 8260
 QLast Update : Wed Apr 08 15:15:02 2020
 Response via : Initial Calibration

Internal Standards	R.T.	QIon	Response	Conc	Units	Dev(Min)
1) Pentafluorobenzene	7.80	168	146435	50.00	ug/l	0.00
34) 1,4-Difluorobenzene	8.70	114	291301	50.00	ug/l	0.00
63) Chlorobenzene-d5	11.49	117	276269	50.00	ug/l	0.00
72) 1,4-Dichlorobenzene-d4	13.43	152	118356	50.00	ug/l	0.00

System Monitoring Compounds

33) 1,2-Dichloroethane-d4	8.15	65	91440	56.15	ug/l	0.00
Spiked Amount				50.000		
			Recovery	=	112.30%	
35) Dibromofluoromethane	7.73	113	86204	49.73	ug/l	0.00
Spiked Amount				50.000		
			Recovery	=	99.46%	
50) Toluene-d8	10.19	98	359906	49.61	ug/l	0.00
Spiked Amount				50.000		
			Recovery	=	99.22%	
62) 4-Bromofluorobenzene	12.48	95	126359	52.79	ug/l	0.00
Spiked Amount				50.000		
			Recovery	=	105.58%	

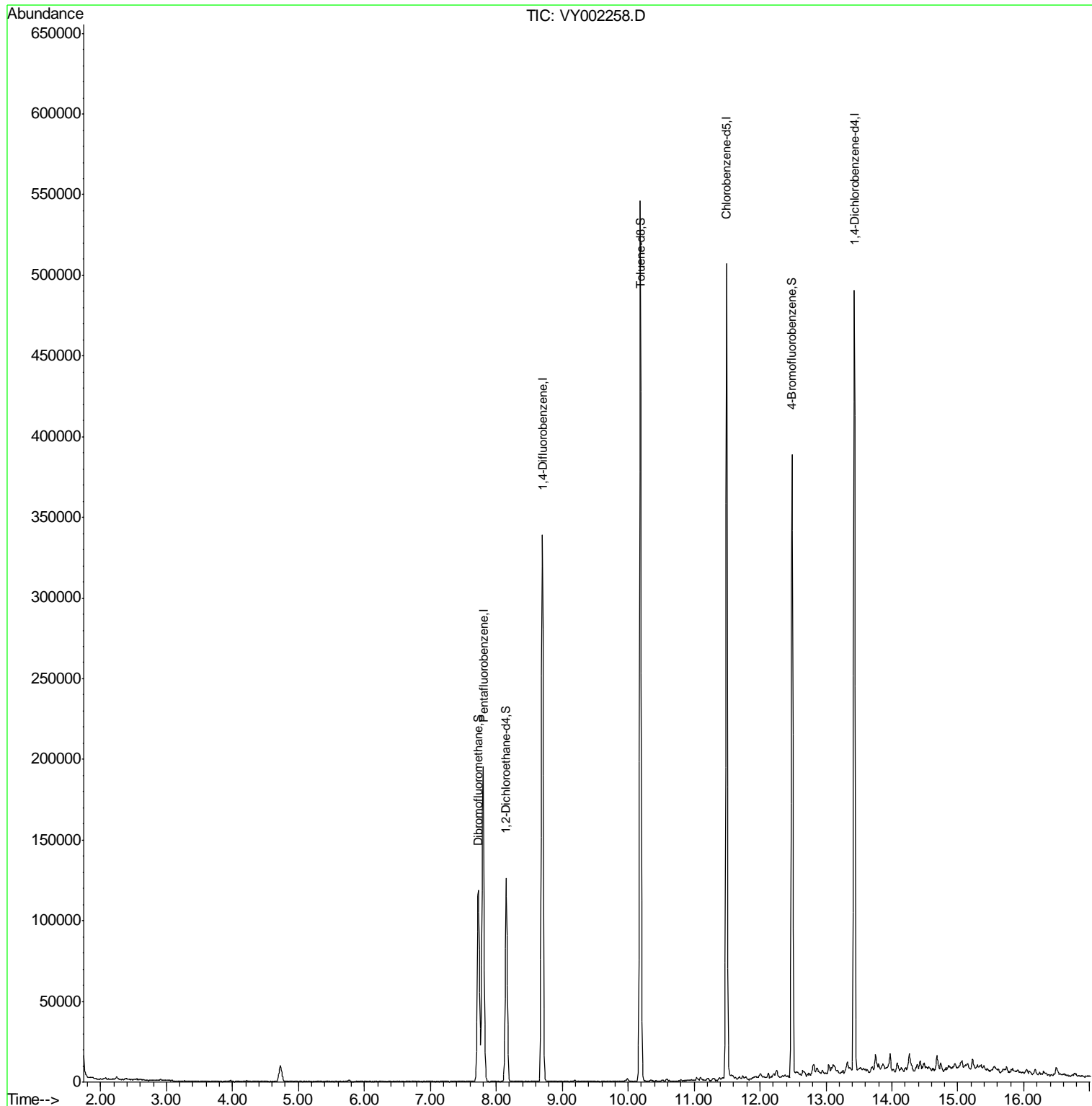
Target Compounds Qvalue

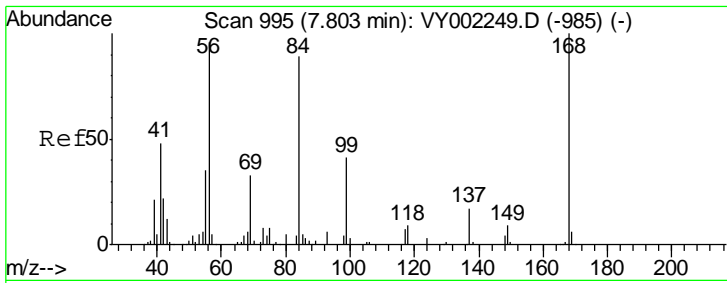
(#) = qualifier out of range (m) = manual integration (+) = signals summed

Data Path : Z:\VOASRV\HPCHEM1\MSVOA Y\DATA\VY040820\
 Data File : VY002258.D
 Acq On : 08 Apr 2020 18:25
 Operator : SY/MD
 Sample : L2201-04
 Misc : 6.15G/5ML/MSVOA Y/SOIL
 ALS Vial : 18 Sample Multiplier: 1

Instrument :
 MSVOA_Y
 ClientSampled :
 CG-SUB-VO

Quant Time: Apr 09 02:57:14 2020
 Quant Method : Z:\VOASRV\HPCHEM1\MSVOA_Y\METHODS\82Y040820S.M
 Quant Title : SW846 8260
 QLast Update : Wed Apr 08 15:15:02 2020
 Response via : Initial Calibration

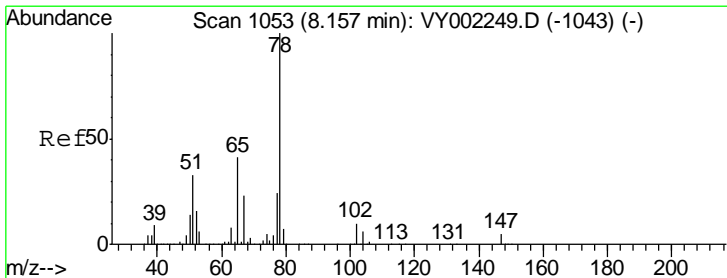
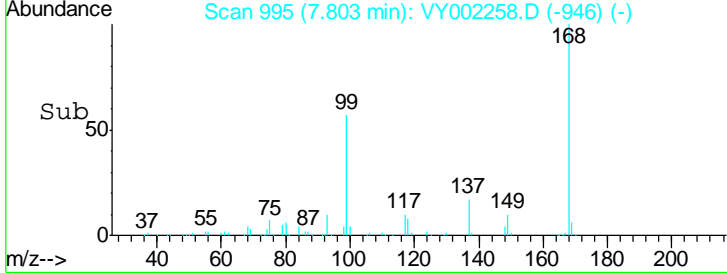
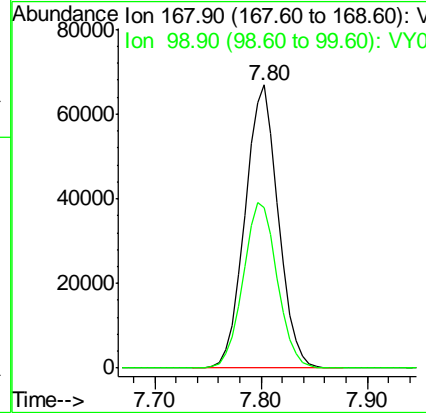
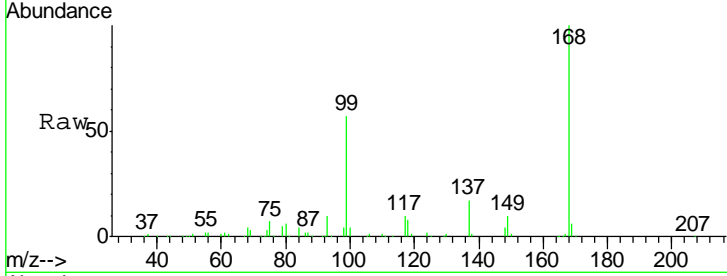




#1
 Pentafluorobenzene
 Concen: 50.000 ug/l
 RT: 7.80 min Scan# 995
 Delta R.T. -0.00 min
 Lab File: VY002258.D
 Acq: 08 Apr 2020 18:25

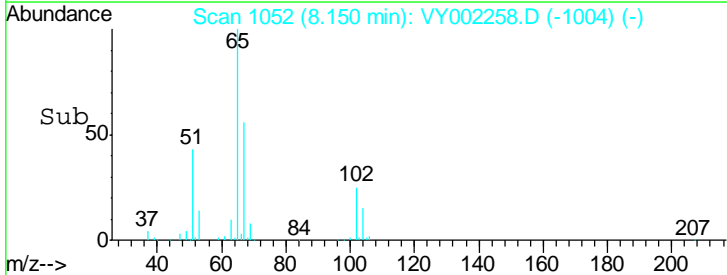
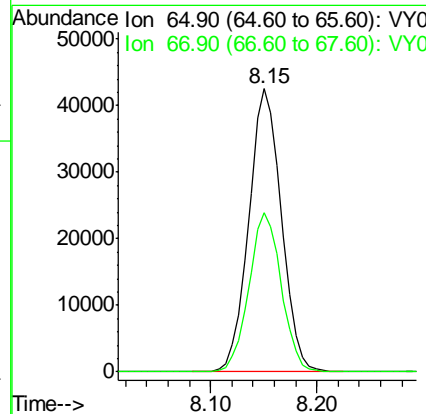
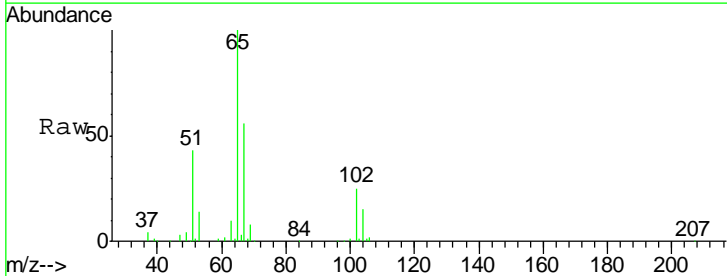
Instrument :
 MSVOA_Y
 ClientSampled :
 CG-SUB-VO

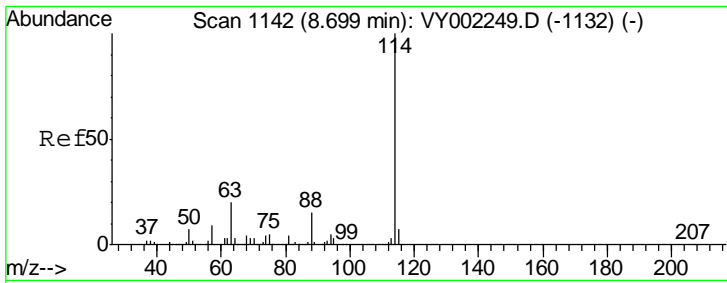
Tgt Ion	Resp	Lower	Upper
168	100		
99	56.6	48.0	72.0



#33
 1,2-Dichloroethane-d4
 Concen: 56.151 ug/l
 RT: 8.15 min Scan# 1052
 Delta R.T. -0.01 min
 Lab File: VY002258.D
 Acq: 08 Apr 2020 18:25

Tgt Ion	Resp	Lower	Upper
65	100		
67	55.7	0.0	114.0

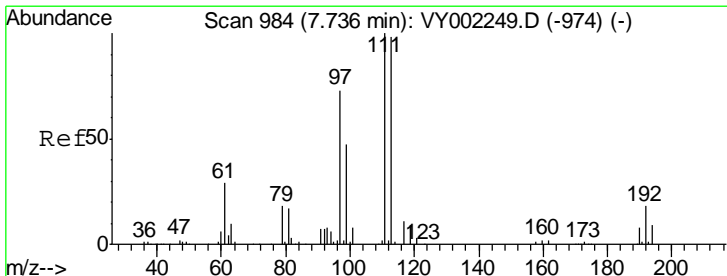
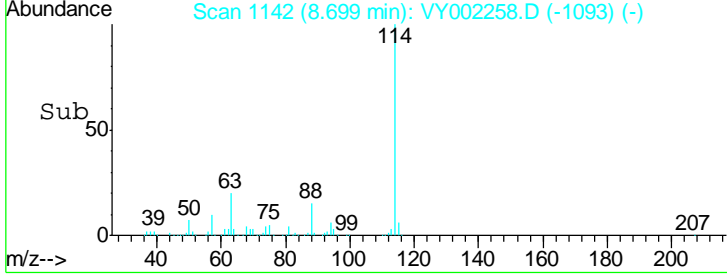
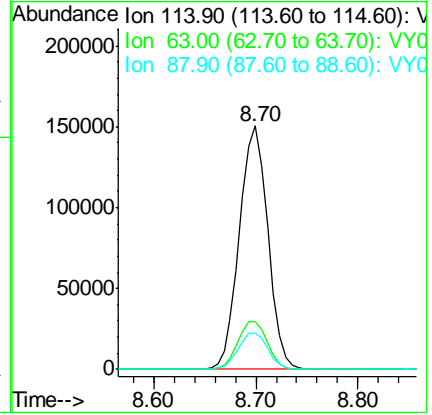
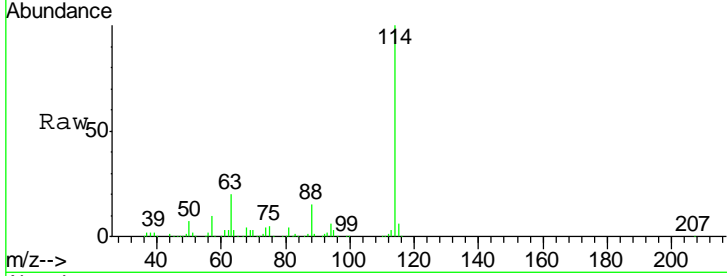




#34
 1,4-Difluorobenzene
 Concen: 50.000 ug/l
 RT: 8.70 min Scan# 1142
 Delta R.T. -0.00 min
 Lab File: VY002258.D
 Acq: 08 Apr 2020 18:25

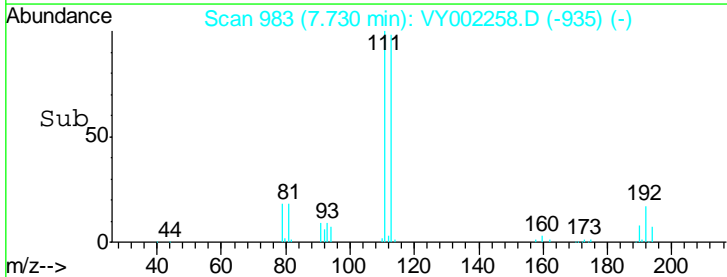
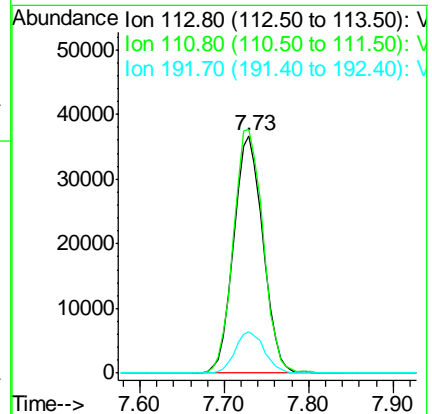
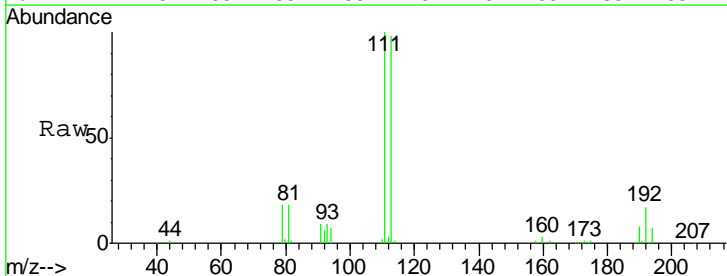
Instrument :
 MSVOA_Y
 ClientSampled :
 CG-SUB-VO

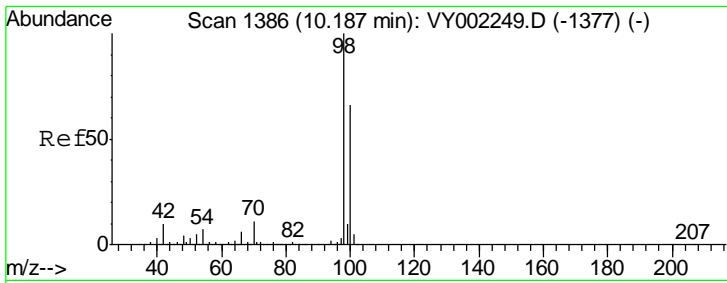
Tgt Ion	Resp	Lower	Upper
114	291301		
63	19.6	0.0	39.0
88	15.0	0.0	31.0



#35
 Dibromofluoromethane
 Concen: 49.733 ug/l
 RT: 7.73 min Scan# 983
 Delta R.T. -0.01 min
 Lab File: VY002258.D
 Acq: 08 Apr 2020 18:25

Tgt Ion	Resp	Lower	Upper
113	86204		
111	103.9	83.5	125.3
192	17.5	14.7	22.1

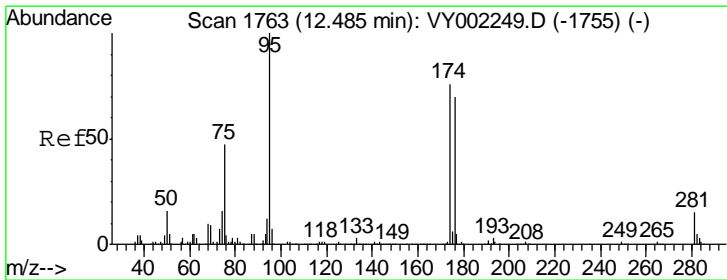
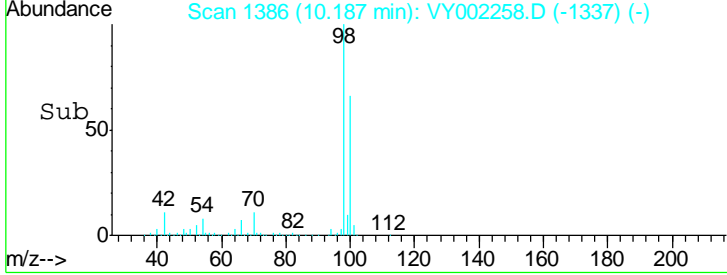
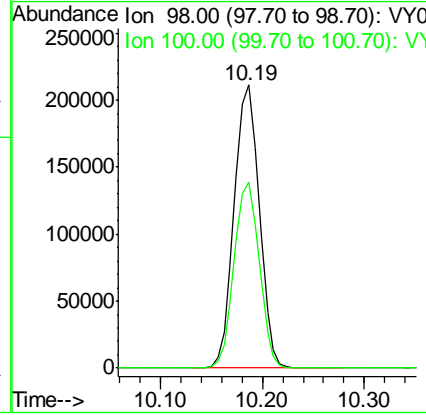
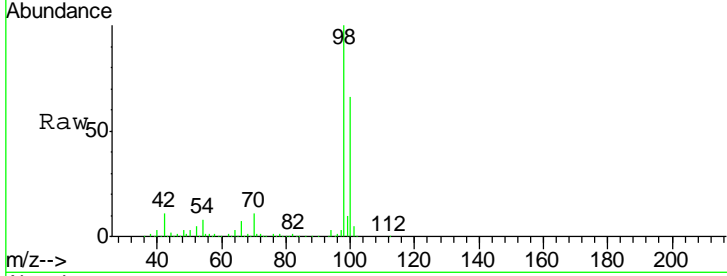




#50
 Toluene-d8
 Concen: 49.608 ug/l
 RT: 10.19 min Scan# 1386
 Delta R.T. -0.00 min
 Lab File: VY002258.D
 Acq: 08 Apr 2020 18:25

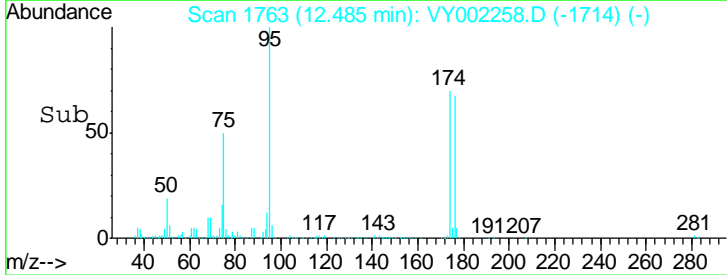
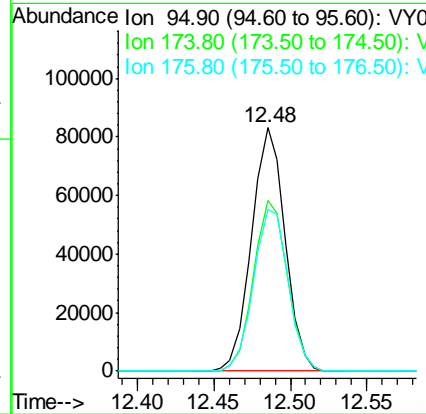
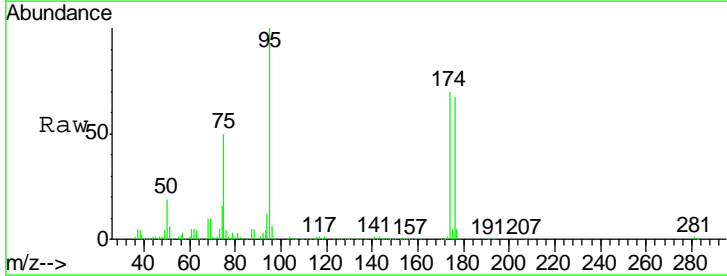
Instrument :
 MSVOA_Y
 ClientSampled :
 CG-SUB-VO

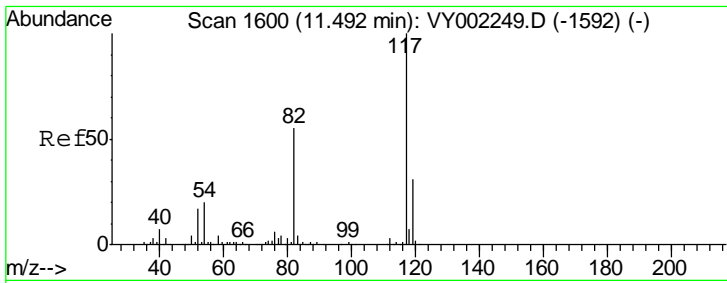
Tgt Ion	Resp	Lower	Upper
98	100		
100	65.5	52.6	78.8



#62
 4-Bromofluorobenzene
 Concen: 52.792 ug/l
 RT: 12.48 min Scan# 1763
 Delta R.T. -0.00 min
 Lab File: VY002258.D
 Acq: 08 Apr 2020 18:25

Tgt Ion	Resp	Lower	Upper
95	100		
174	71.2	0.0	150.6
176	69.1	0.0	141.4

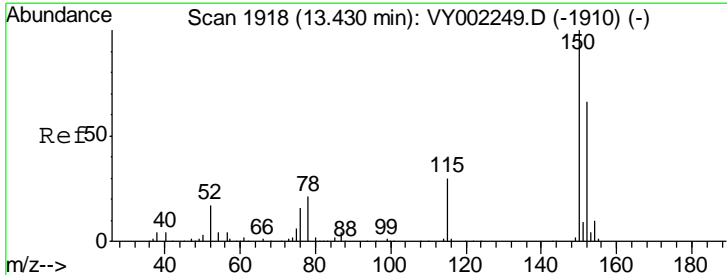
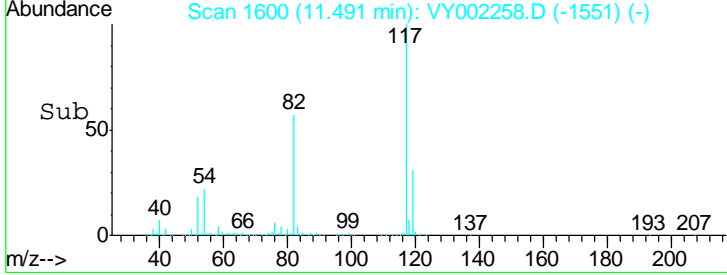
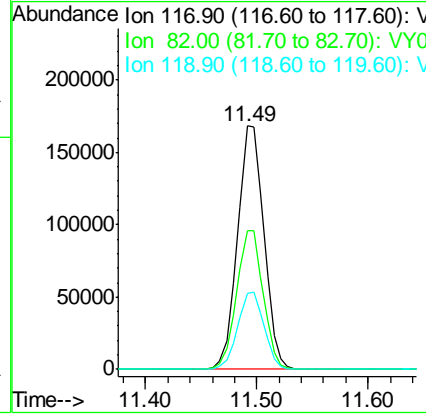
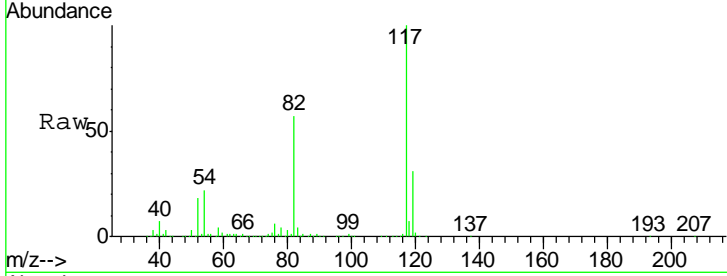




#63
 Chlorobenzene-d5
 Concen: 50.000 ug/l
 RT: 11.49 min Scan# 1600
 Delta R.T. -0.00 min
 Lab File: VY002258.D
 Acq: 08 Apr 2020 18:25

Instrument :
 MSVOA_Y
 ClientSampled :
 CG-SUB-VO

Tgt Ion	Resp	Lower	Upper
117	100		
82	57.1	44.2	66.4
119	31.4	25.1	37.7



#72
 1,4-Dichlorobenzene-d4
 Concen: 50.000 ug/l
 RT: 13.43 min Scan# 1918
 Delta R.T. -0.00 min
 Lab File: VY002258.D
 Acq: 08 Apr 2020 18:25

Tgt Ion	Resp	Lower	Upper
152	100		
115	63.0	30.7	92.1
150	158.3	0.0	350.6

