

Data Path : Z:\VOASRV\HPCHEM1\MSVOA Y\DATA\VY040920\
 Data File : VY002272.D
 Acq On : 09 Apr 2020 14:12
 Operator : SY/MD
 Sample : L2195-05
 Misc : 9.03G/5ML/MSVOA Y/SOIL
 ALS Vial : 11 Sample Multiplier: 1

Instrument :
 MSVOA_Y
 ClientSampleId :
 VNJ-204

Integration Parameters: RTEINT.P
 Integrator: RTE
 Smoothing : ON Filtering: 5
 Sampling : 1 Min Area: 3 % of largest Peak
 Start Thrs: 0.2 Max Peaks: 100
 Stop Thrs : 0 Peak Location: TOP

If leading or trailing edge < 100 prefer < Baseline drop else tangent >
 Peak separation: 5

Method : Z:\VOASRV\HPCHEM1\MSVOA_Y\METHODS\82Y040820S.M
 Title : SW846 8260

Signal : TIC

peak #	R.T. min	first scan	max scan	last scan	PK TY	peak height	corr. area	corr. % max.	% of total
1	4.742	485	493	506	rVB4	9097	28175	3.06%	0.603%
2	7.742	975	985	991	rBV	120850	284116	30.86%	6.080%
3	7.809	991	996	1011	rVB	193369	430153	46.73%	9.205%
4	8.162	1045	1054	1066	rBV	124181	267298	29.04%	5.720%
5	8.705	1135	1143	1156	rVB	328044	657930	71.47%	14.080%
6	10.193	1379	1387	1395	rBV	543235	920555	100.00%	19.700%
7	11.503	1594	1602	1611	rBV	485332	789154	85.73%	16.888%
8	12.491	1757	1764	1772	rVB	366637	562911	61.15%	12.046%
9	13.436	1912	1919	1926	rBV	481545	732548	79.58%	15.677%

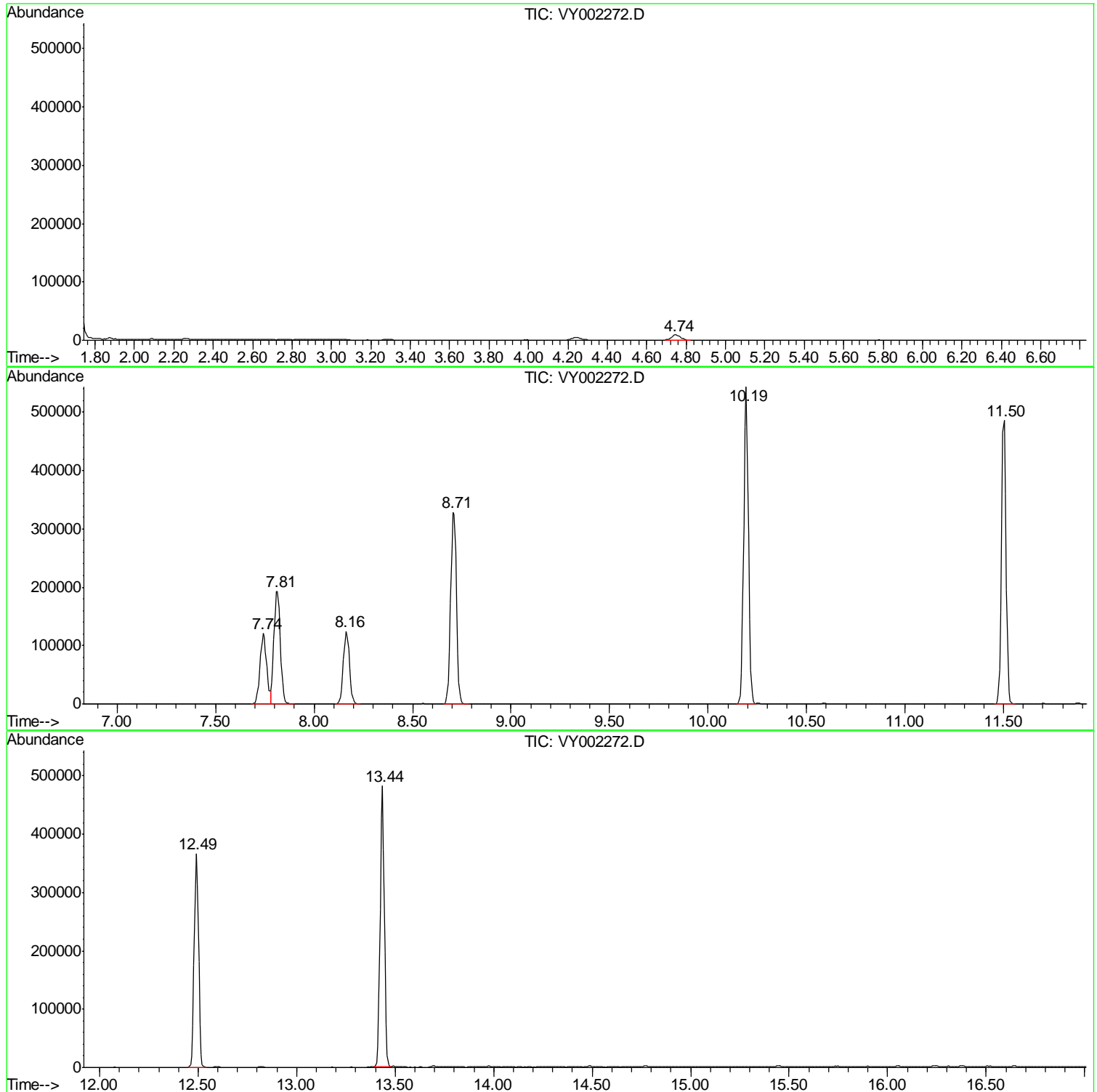
Sum of corrected areas: 4672840

Data Path : Z:\VOASRV\HPCHEM1\MSVOA Y\DATA\VY040920\
Data File : VY002272.D
Acq On : 09 Apr 2020 14:12
Operator : SY/MD
Sample : L2195-05
Misc : 9.03G/5ML/MSVOA Y/SOIL
ALS Vial : 11 Sample Multiplier: 1

Instrument :
MSVOA_Y
ClientSampled :
VNJ-204

Quant Method : Z:\VOASRV\HPCHEM1\MSVOA_Y\METHODS\82Y040820S.M
Quant Title : SW846 8260

TIC Library : C:\DATABASE\NIST11.L
TIC Integration Parameters: LSCINT.P



Data Path : Z:\VOASRV\HPCHEM1\MSVOA_Y\DATA\VY040920\
Data File : VY002272.D
Acq On : 09 Apr 2020 14:12
Operator : SY/MD
Sample : L2195-05
Misc : 9.03G/5ML/MSVOA_Y/SOIL
ALS Vial : 11 Sample Multiplier: 1

Instrument :
MSVOA_Y
ClientSampleId :
VNJ-204

Quant Method : Z:\VOASRV\HPCHEM1\MSVOA_Y\METHODS\82Y040820S.M
Quant Title : SW846 8260

TIC Library : C:\DATABASE\NIST11.L
TIC Integration Parameters: LSCINT.P

No Library Search Compounds Detected

Data Path : Z:\VOASRV\HPCHEM1\MSVOA_Y\DATA\VY040920\
Data File : VY002272.D
Acq On : 09 Apr 2020 14:12
Operator : SY/MD
Sample : L2195-05
Misc : 9.03G/5ML/MSVOA_Y/SOIL
ALS Vial : 11 Sample Multiplier: 1

Instrument :
MSVOA_Y
ClientSampleId :
VNJ-204

Quant Method : Z:\VOASRV\HPCHEM1\MSVOA_Y\METHODS\82Y040820S.M
Quant Title : SW846 8260

TIC Library : C:\DATABASE\NIST11.L
TIC Integration Parameters: LSCINT.P

TIC Top Hit name	RT	EstConc	Units	Response	--Internal Standard--			
					#	RT	Resp	Conc
