

Data Path : Z:\voasrv\HPCHEM1\MSVOA_Y\Data\VY041224\
 Data File : VY017923.D
 Acq On : 12 Apr 2024 14:07
 Operator : SY/MD
 Sample : P2091-01
 Misc : 5.01g/5.0mL/MSVOA_Y/SOIL/A
 ALS Vial : 7 Sample Multiplier: 1

Instrument :
 MSVOA_Y
 ClientSampleId :

Quant Time: Apr 13 00:35:03 2024
 Quant Method : Z:\voasrv\HPCHEM1\MSVOA_Y\methods\82Y032924S.M
 Quant Title : SW846 8260
 QLast Update : Sat Mar 30 05:58:13 2024
 Response via : Initial Calibration

Compound	R.T.	QIon	Response	Conc	Units	Dev(Min)

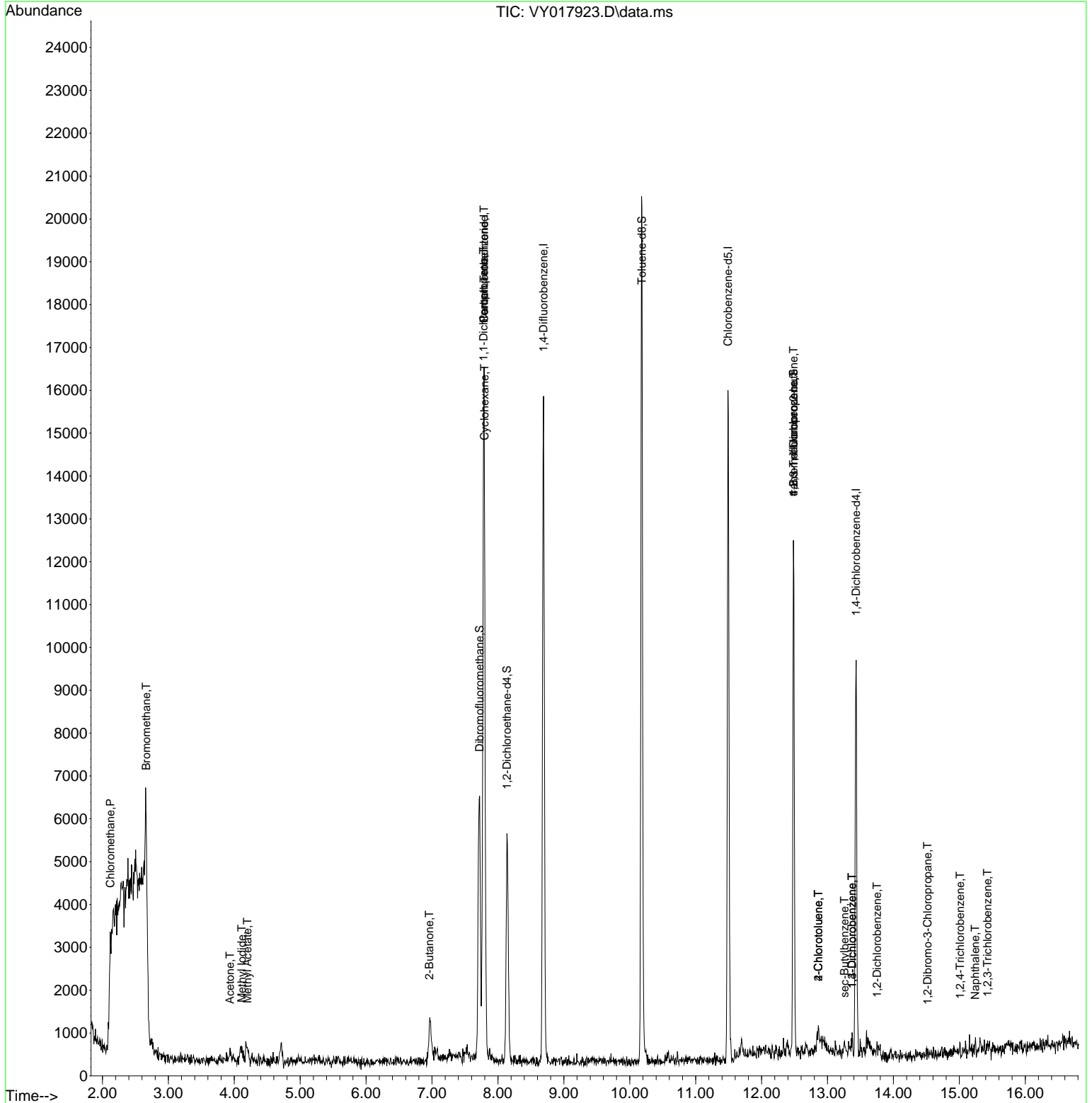
Internal Standards						
1) Pentafluorobenzene	7.789	168	13438	50.00	ug/l	0.00
34) 1,4-Difluorobenzene	8.691	114	13991	50.00	ug/l	0.00
63) Chlorobenzene-d5	11.490	117	9447	50.00	ug/l	0.00
72) 1,4-Dichlorobenzene-d4	13.434	152	2798	50.00	ug/l	0.00
System Monitoring Compounds						
33) 1,2-Dichloroethane-d4	8.136	65	4022	34.59	ug/l	0.00
Spiked Amount	50.000	Range 50 - 163	Recovery	=	69.18%	
35) Dibromofluoromethane	7.722	113	5028	62.19	ug/l	0.00
Spiked Amount	50.000	Range 54 - 147	Recovery	=	124.38%	
50) Toluene-d8	10.185	98	14424	47.76	ug/l	0.00
Spiked Amount	50.000	Range 58 - 134	Recovery	=	95.52%	
62) 4-Bromofluorobenzene	12.483	95	3428	37.31	ug/l	0.00
Spiked Amount	50.000	Range 30 - 143	Recovery	=	74.62%	
Target Compounds						
						Qvalue
3) Chloromethane	2.119	50	454	2.59	ug/l #	68
5) Bromomethane	2.662	94	1215	6.56	ug/l	94
10) Methyl Iodide	4.113	142	666	4.57	ug/l #	79
16) Acetone	3.936	43	450	18.72	ug/l #	36
18) Methyl Acetate	4.198	43	93	1.75	ug/l #	46
20) Methylene Chloride	4.722	84	291	Below Cal	#	65
25) 2-Butanone	6.960	43	46	1.34	ug/l #	41
31) Cyclohexane	7.795	56	276	1.35	ug/l #	39
36) 1,1-Dichloropropene	7.783	75	1020	8.65	ug/l #	44
38) Carbon Tetrachloride	7.789	117	1201	9.81	ug/l #	13
70) Styrene	12.063	104	88	Below Cal	#	27
76) 1,2,3-Trichloropropane	12.483	75	1960	76.87	ug/l #	100
79) 2-Chlorotoluene	12.861	91	354	2.70	ug/l	72
81) trans-1,4-Dichloro-2-b...	12.483	75	1960	137.60	ug/l #	16
82) 4-Chlorotoluene	12.861	91	354	2.61	ug/l	73
85) sec-Butylbenzene	13.257	105	216	1.03	ug/l	79
87) 1,3-Dichlorobenzene	13.373	146	125	1.35	ug/l	96
88) 1,4-Dichlorobenzene	13.373	146	125	1.41	ug/l	97
91) 1,2-Dichlorobenzene	13.751	146	155	2.02	ug/l #	25
92) 1,2-Dibromo-3-Chloropr...	14.519	75	22	4.80	ug/l #	1
93) 1,2,4-Trichlorobenzene	15.013	180	49	1.16	ug/l #	41
95) Naphthalene	15.239	128	168	3.66	ug/l #	69
96) 1,2,3-Trichlorobenzene	15.428	180	89	2.50	ug/l #	12

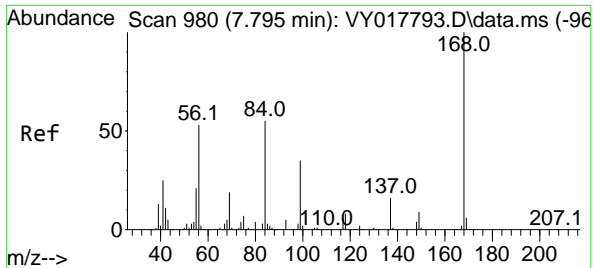
(#) = qualifier out of range (m) = manual integration (+) = signals summed

Data Path : Z:\voasrv\HPCHEM1\MSVOA_Y\Data\VY041224\
 Data File : VY017923.D
 Acq On : 12 Apr 2024 14:07
 Operator : SY/MD
 Sample : P2091-01
 Misc : 5.01g/5.0mL/MSVOA_Y/SOIL/A
 ALS Vial : 7 Sample Multiplier: 1

Instrument :
 MSVOA_Y
 ClientSampleId :

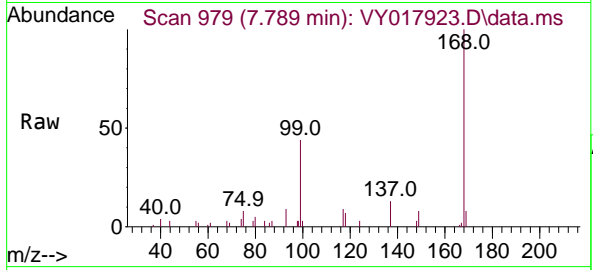
Quant Time: Apr 13 00:35:03 2024
 Quant Method : Z:\voasrv\HPCHEM1\MSVOA_Y\methods\82Y032924S.M
 Quant Title : SW846 8260
 QLast Update : Sat Mar 30 05:58:13 2024
 Response via : Initial Calibration



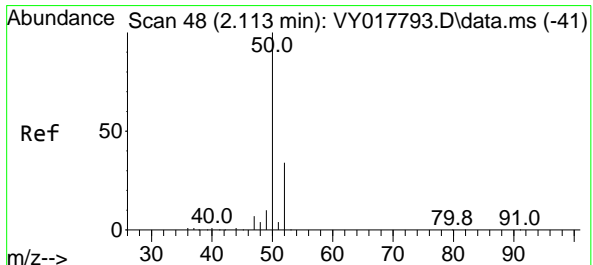
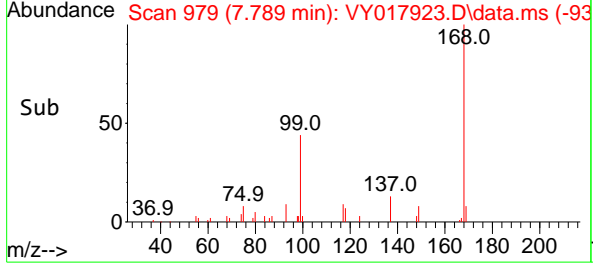
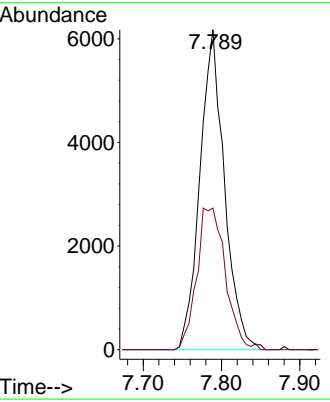


#1
 Pentafluorobenzene
 Concen: 50.00 ug/l
 RT: 7.789 min Scan# 91
 Delta R.T. -0.006 min
 Lab File: VY017923.D
 Acq: 12 Apr 2024 14:07

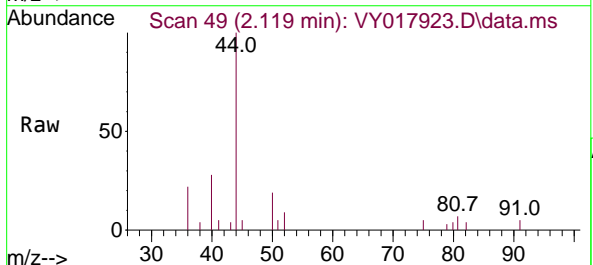
Instrument :
 MSVOA_Y
 ClientSampleId :



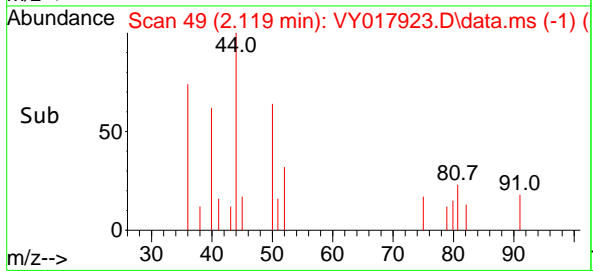
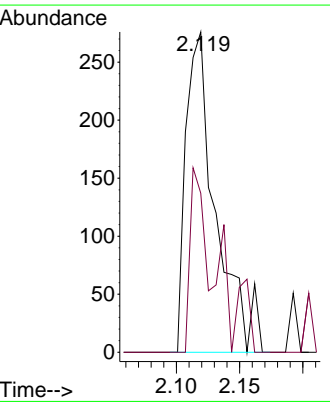
Tgt Ion:168 Resp: 13438
 Ion Ratio Lower Upper
 168 100
 99 44.3 39.1 58.7

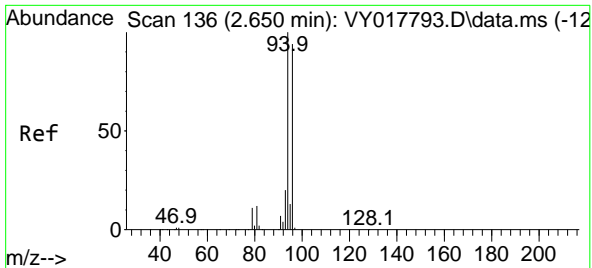


#3
 Chloromethane
 Concen: 2.59 ug/l
 RT: 2.119 min Scan# 49
 Delta R.T. 0.006 min
 Lab File: VY017923.D
 Acq: 12 Apr 2024 14:07



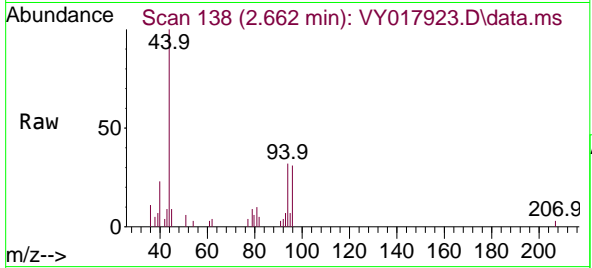
Tgt Ion: 50 Resp: 454
 Ion Ratio Lower Upper
 50 100
 52 49.6 25.6 38.4#



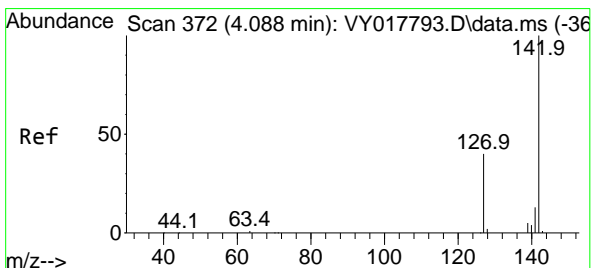
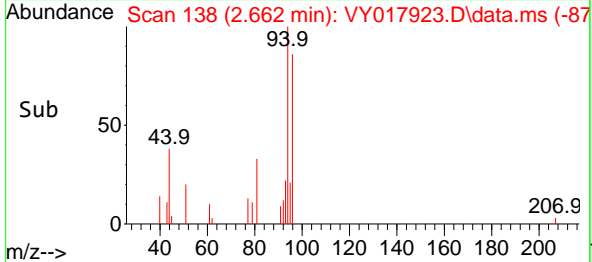
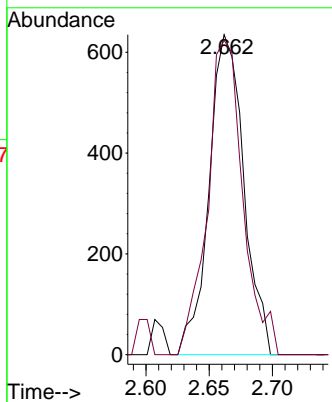


#5
 Bromomethane
 Concen: 6.56 ug/l
 RT: 2.662 min Scan# 11
 Delta R.T. 0.012 min
 Lab File: VY017923.D
 Acq: 12 Apr 2024 14:07

Instrument :
 MSVOA_Y
 ClientSampleId :

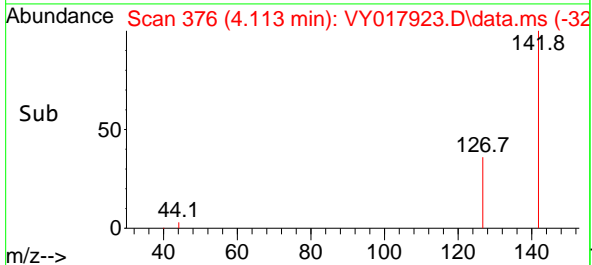
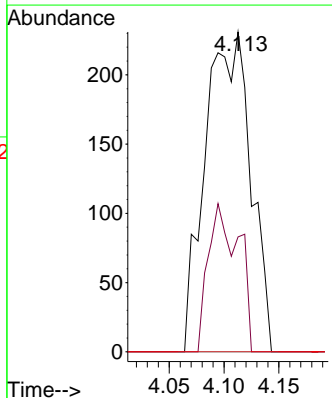
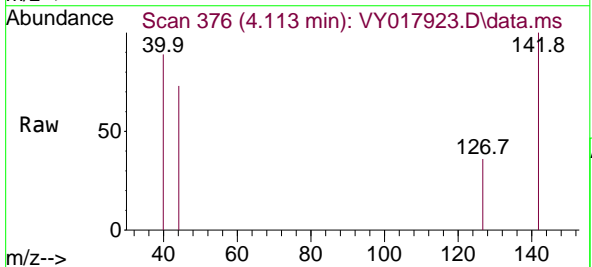


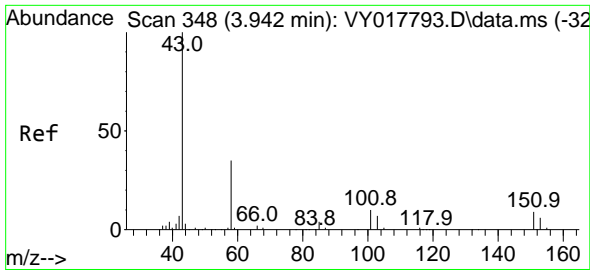
Tgt Ion: 94 Resp: 1215
 Ion Ratio Lower Upper
 94 100
 96 98.3 74.1 111.1



#10
 Methyl Iodide
 Concen: 4.57 ug/l
 RT: 4.113 min Scan# 376
 Delta R.T. 0.025 min
 Lab File: VY017923.D
 Acq: 12 Apr 2024 14:07

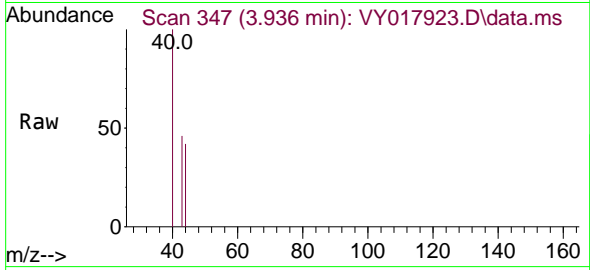
Tgt Ion: 142 Resp: 666
 Ion Ratio Lower Upper
 142 100
 127 31.1 32.8 49.2#
 141 0.0 11.4 17.2#



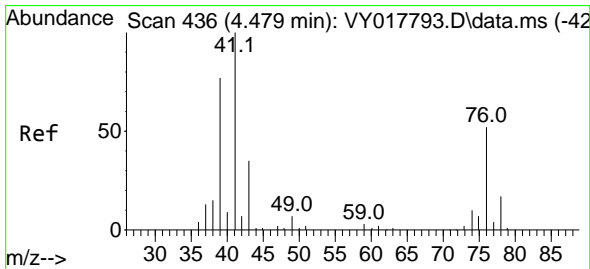
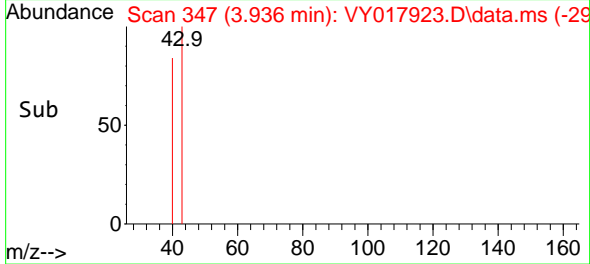
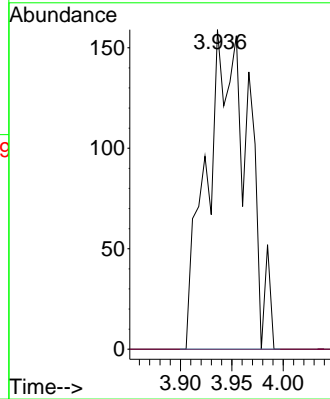


#16
 Acetone
 Concen: 18.72 ug/l
 RT: 3.936 min Scan# 34
 Delta R.T. -0.006 min
 Lab File: VY017923.D
 Acq: 12 Apr 2024 14:07

Instrument :
 MSVOA_Y
 ClientSampleId :

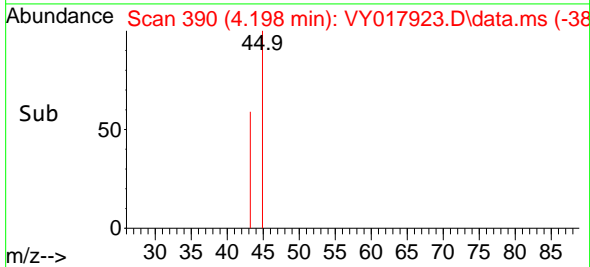
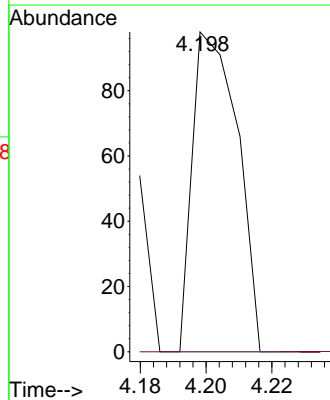
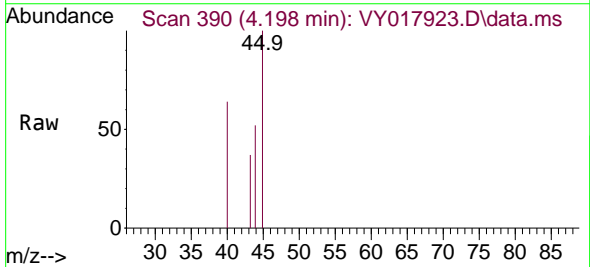


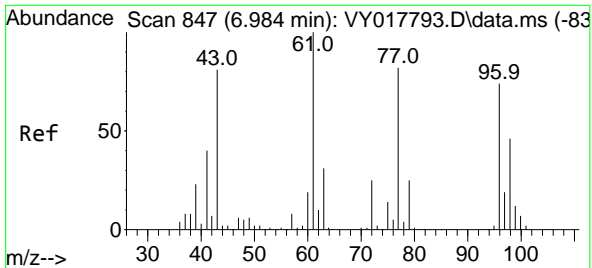
Tgt Ion: 43 Resp: 450
 Ion Ratio Lower Upper
 43 100
 58 0.0 31.7 47.5#



#18
 Methyl Acetate
 Concen: 1.75 ug/l
 RT: 4.198 min Scan# 390
 Delta R.T. -0.280 min
 Lab File: VY017923.D
 Acq: 12 Apr 2024 14:07

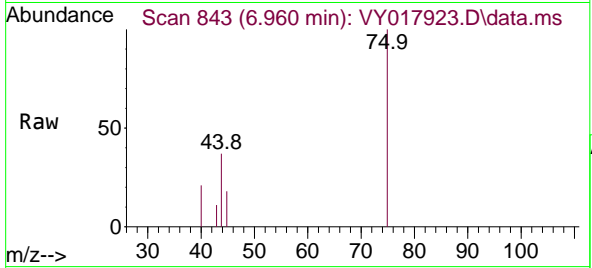
Tgt Ion: 43 Resp: 93
 Ion Ratio Lower Upper
 43 100
 74 0.0 23.3 34.9#



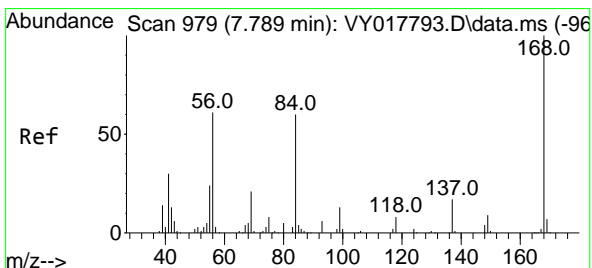
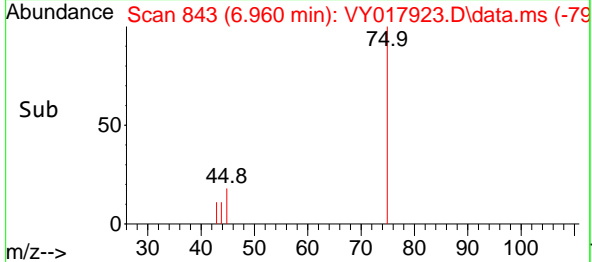
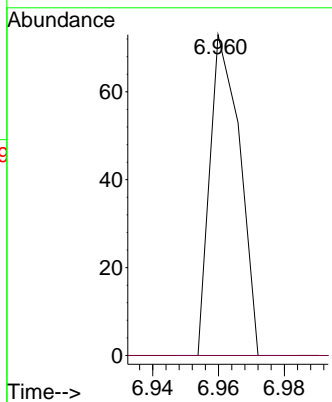


#25
 2-Butanone
 Concen: 1.34 ug/l
 RT: 6.960 min Scan# 84
 Delta R.T. -0.024 min
 Lab File: VY017923.D
 Acq: 12 Apr 2024 14:07

Instrument :
 MSVOA_Y
 ClientSampleId :

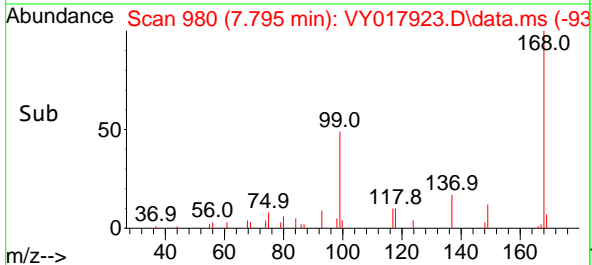
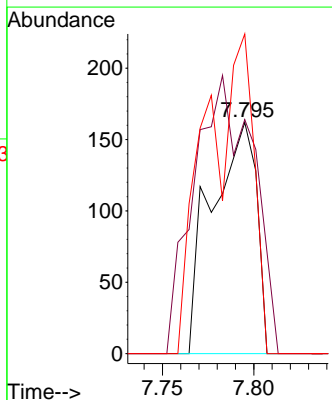
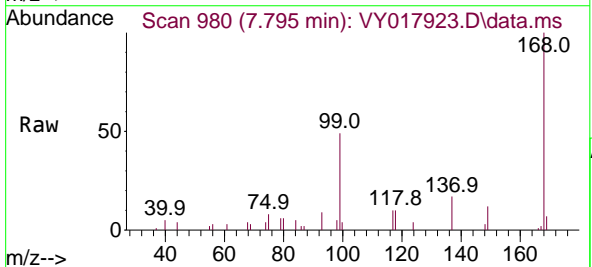


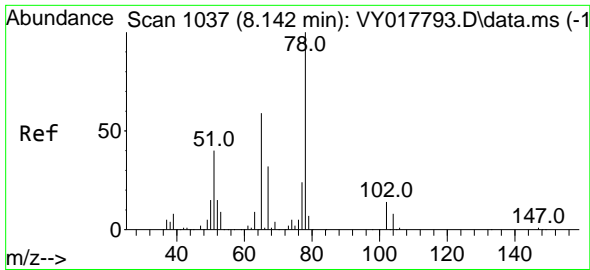
Tgt Ion: 43 Resp: 46
 Ion Ratio Lower Upper
 43 100
 72 0.0 27.3 40.9#



#31
 Cyclohexane
 Concen: 1.35 ug/l
 RT: 7.795 min Scan# 980
 Delta R.T. 0.006 min
 Lab File: VY017923.D
 Acq: 12 Apr 2024 14:07

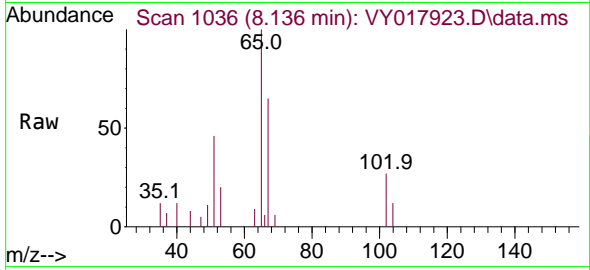
Tgt Ion: 56 Resp: 276
 Ion Ratio Lower Upper
 56 100
 69 101.2 28.7 43.1#
 84 138.3 77.7 116.5#



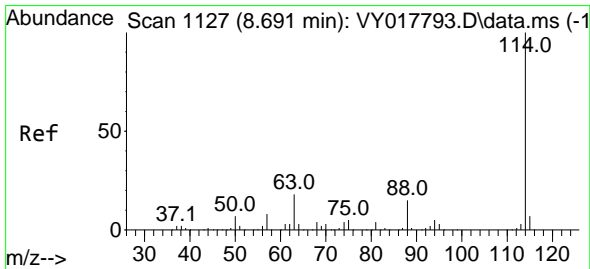
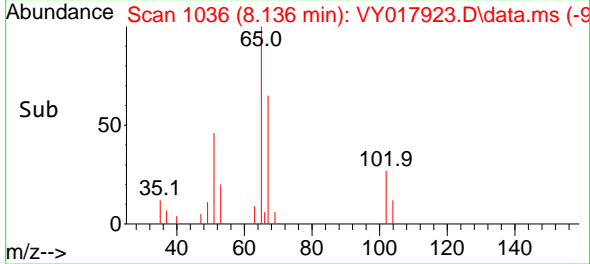
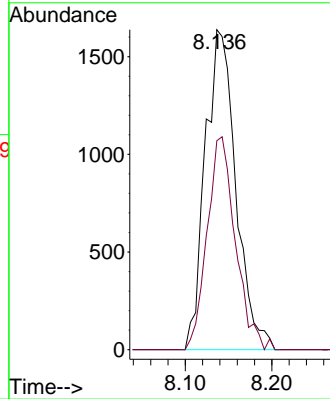


#33
 1,2-Dichloroethane-d4
 Concen: 34.59 ug/l
 RT: 8.136 min Scan# 1036
 Delta R.T. -0.006 min
 Lab File: VY017923.D
 Acq: 12 Apr 2024 14:07

Instrument : MSVOA_Y
 ClientSampleId :

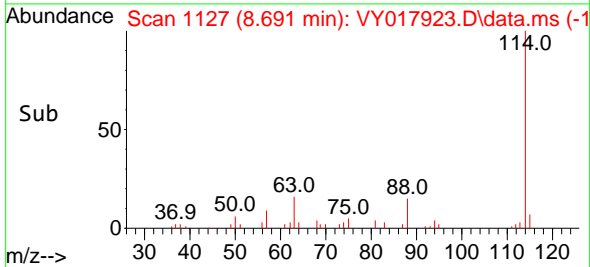
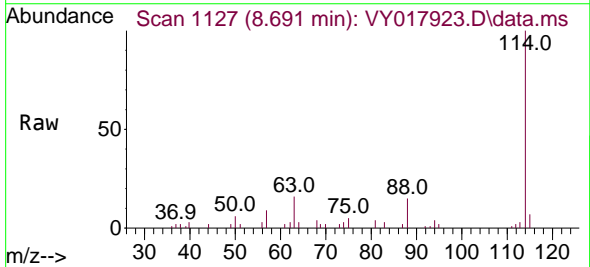
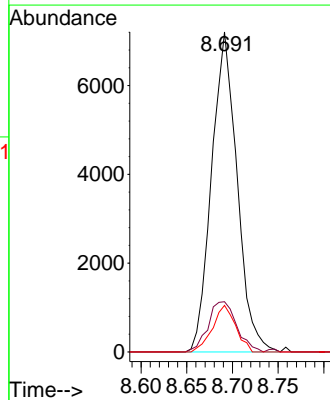


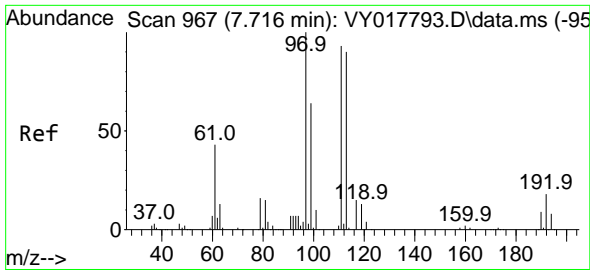
Tgt Ion: 65 Resp: 4022
 Ion Ratio Lower Upper
 65 100
 67 61.5 0.0 109.6



#34
 1,4-Difluorobenzene
 Concen: 50.00 ug/l
 RT: 8.691 min Scan# 1127
 Delta R.T. 0.000 min
 Lab File: VY017923.D
 Acq: 12 Apr 2024 14:07

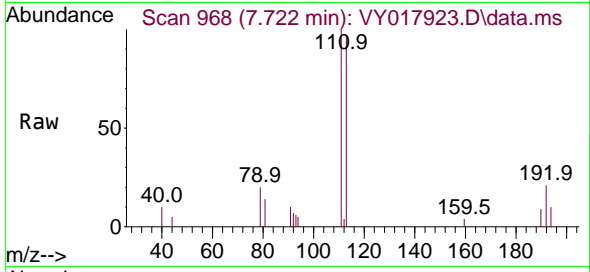
Tgt Ion:114 Resp: 13991
 Ion Ratio Lower Upper
 114 100
 63 15.7 0.0 35.0
 88 14.6 0.0 27.2



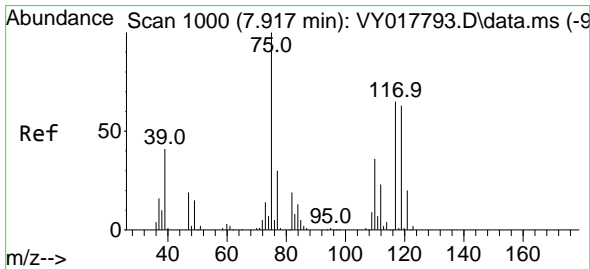
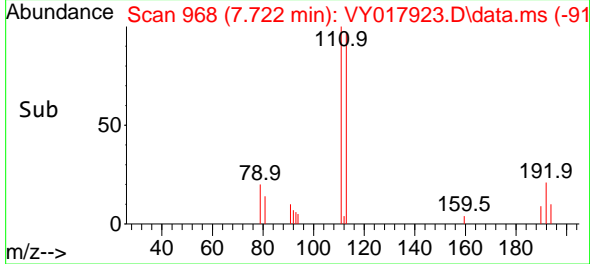
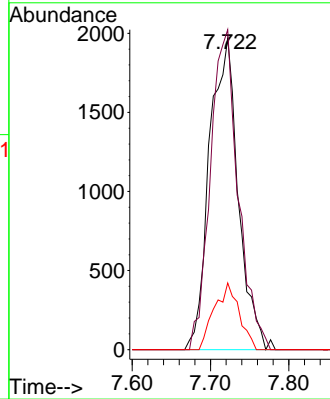


#35
 Dibromofluoromethane
 Concen: 62.19 ug/l
 RT: 7.722 min Scan# 90
 Delta R.T. 0.006 min
 Lab File: VY017923.D
 Acq: 12 Apr 2024 14:07

Instrument :
 MSVOA_Y
 ClientSampleId :

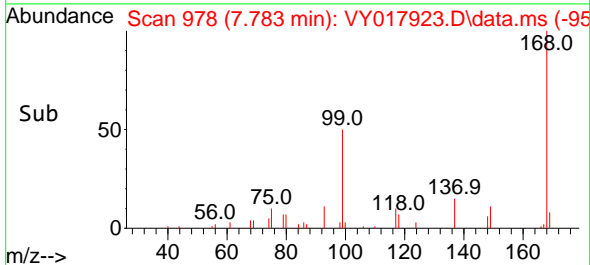
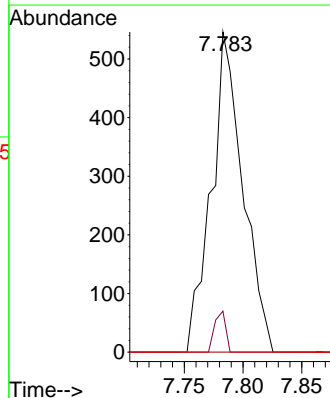
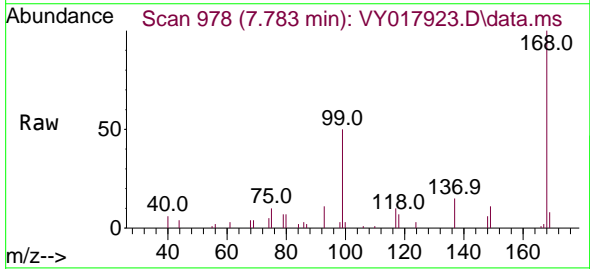


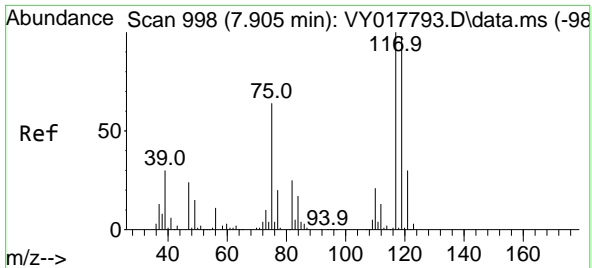
Tgt Ion:113 Resp: 5028
 Ion Ratio Lower Upper
 113 100
 111 99.1 82.2 123.4
 192 18.4 15.9 23.9



#36
 1,1-Dichloropropene
 Concen: 8.65 ug/l
 RT: 7.783 min Scan# 978
 Delta R.T. -0.134 min
 Lab File: VY017923.D
 Acq: 12 Apr 2024 14:07

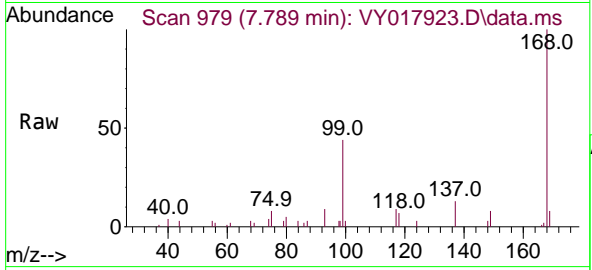
Tgt Ion: 75 Resp: 1020
 Ion Ratio Lower Upper
 75 100
 110 4.5 19.0 57.0#
 77 0.0 25.3 37.9#



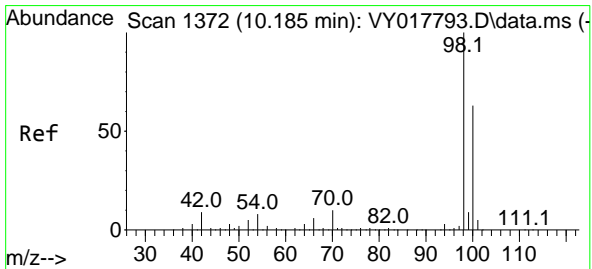
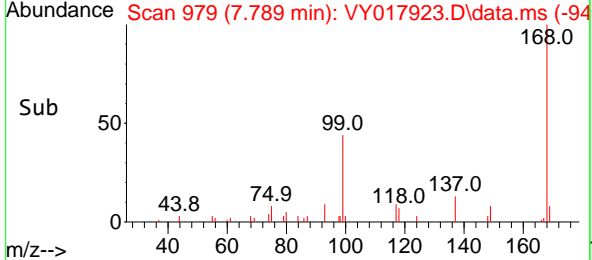
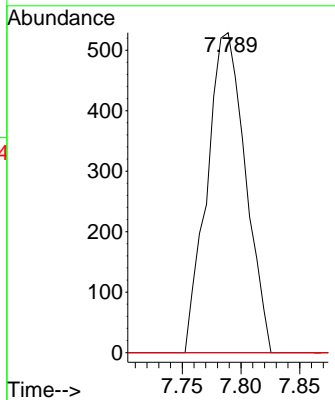


#38
 Carbon Tetrachloride
 Concen: 9.81 ug/l
 RT: 7.789 min Scan# 91
 Delta R.T. -0.116 min
 Lab File: VY017923.D
 Acq: 12 Apr 2024 14:07

Instrument :
 MSVOA_Y
 ClientSampleId :

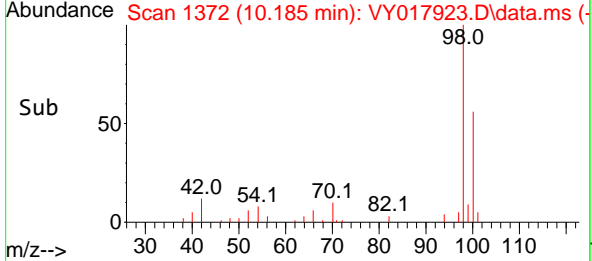
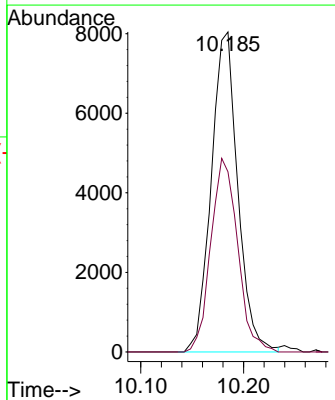
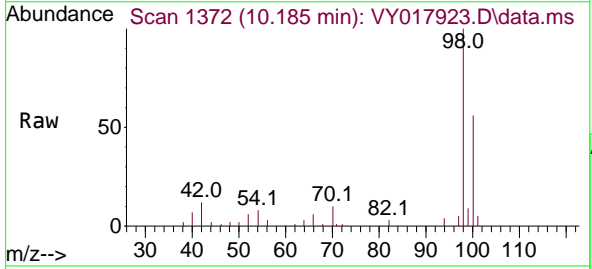


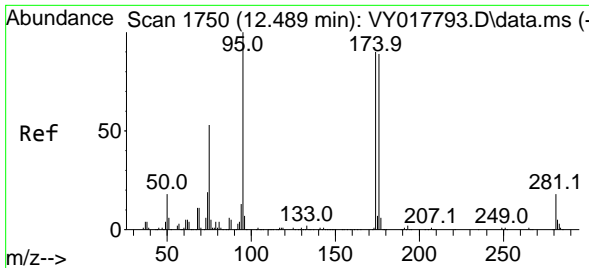
Tgt Ion:117 Resp: 1201
 Ion Ratio Lower Upper
 117 100
 119 0.0 75.8 113.6#
 121 0.0 24.0 36.0#



#50
 Toluene-d8
 Concen: 47.76 ug/l
 RT: 10.185 min Scan# 1372
 Delta R.T. 0.000 min
 Lab File: VY017923.D
 Acq: 12 Apr 2024 14:07

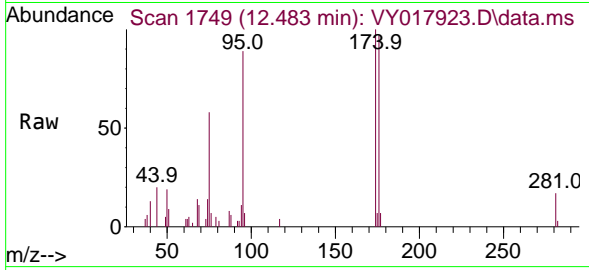
Tgt Ion: 98 Resp: 14424
 Ion Ratio Lower Upper
 98 100
 100 61.2 52.0 78.0





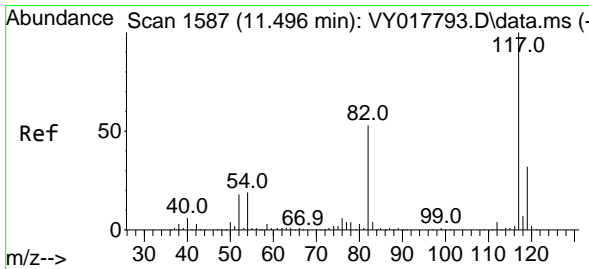
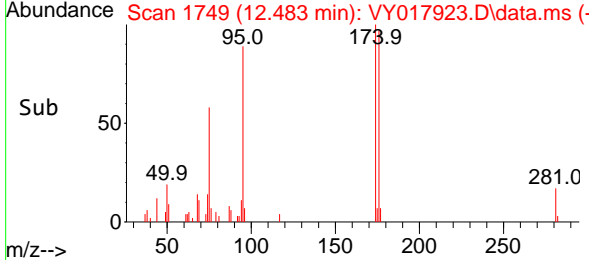
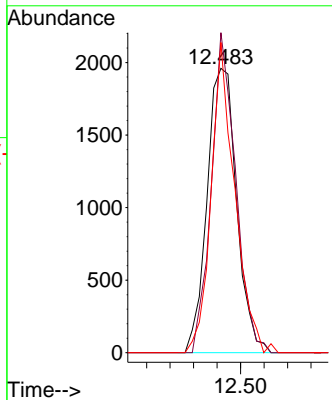
#62
 4-Bromofluorobenzene
 Concen: 37.31 ug/l
 RT: 12.483 min Scan# 1749
 Delta R.T. -0.006 min
 Lab File: VY017923.D
 Acq: 12 Apr 2024 14:07

Instrument : MSVOA_Y
 ClientSampleId :



Tgt Ion: 95 Resp: 3428

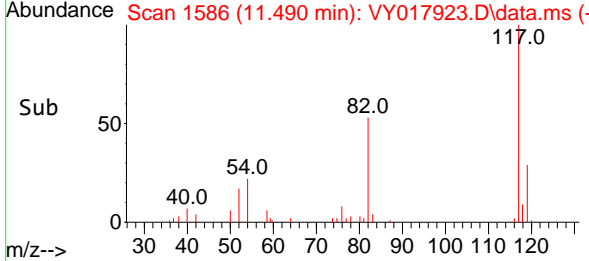
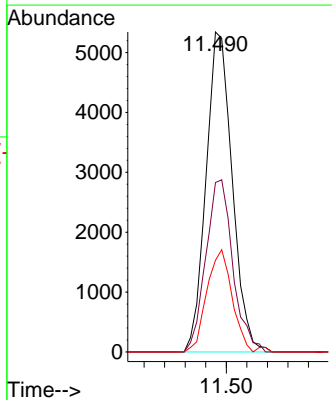
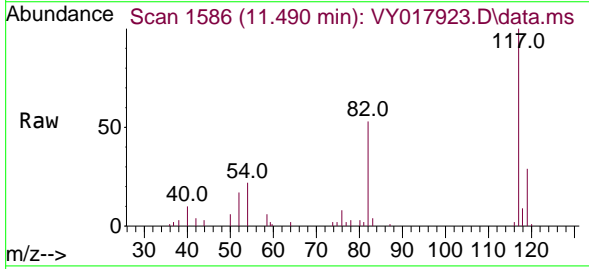
Ion	Ratio	Lower	Upper
95	100		
174	92.5	0.0	175.6
176	87.2	0.0	171.4

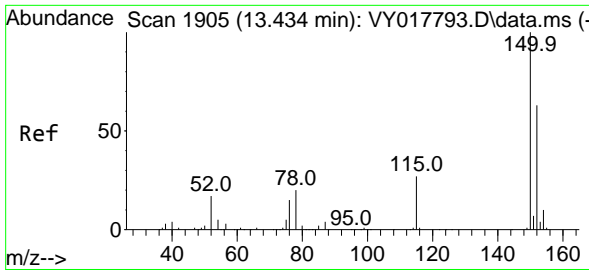


#63
 Chlorobenzene-d5
 Concen: 50.00 ug/l
 RT: 11.490 min Scan# 1586
 Delta R.T. -0.006 min
 Lab File: VY017923.D
 Acq: 12 Apr 2024 14:07

Tgt Ion: 117 Resp: 9447

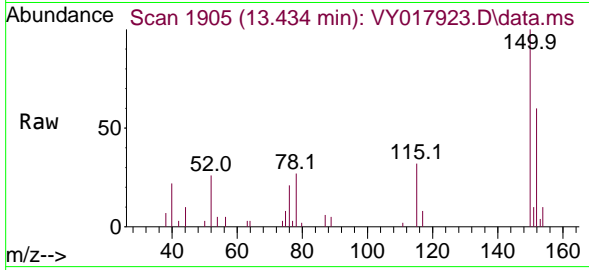
Ion	Ratio	Lower	Upper
117	100		
82	53.0	42.4	63.6
119	28.7	25.9	38.9



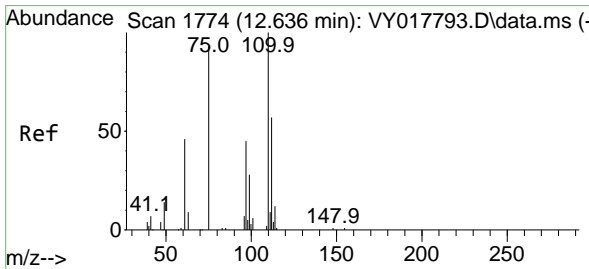
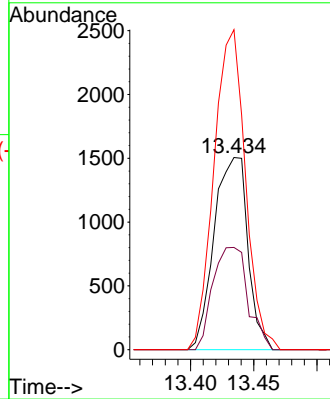
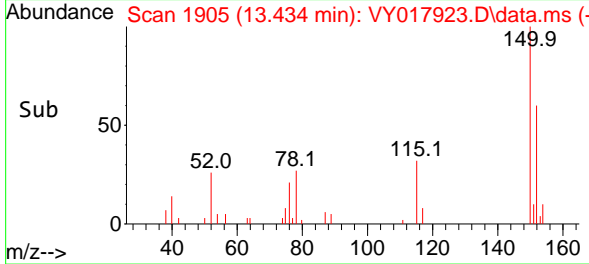


#72
 1,4-Dichlorobenzene-d4
 Concen: 50.00 ug/l
 RT: 13.434 min Scan# 1749
 Delta R.T. 0.000 min
 Lab File: VY017923.D
 Acq: 12 Apr 2024 14:07

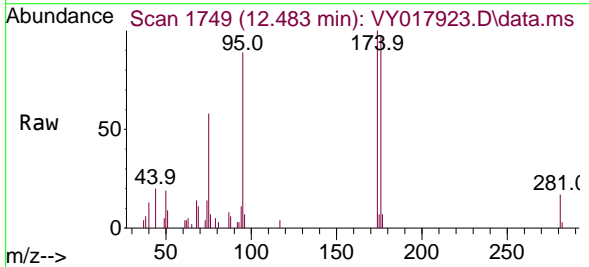
Instrument :
 MSVOA_Y
 ClientSampleId :



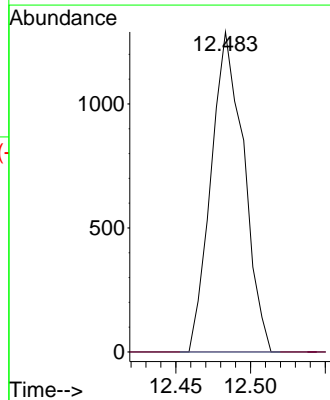
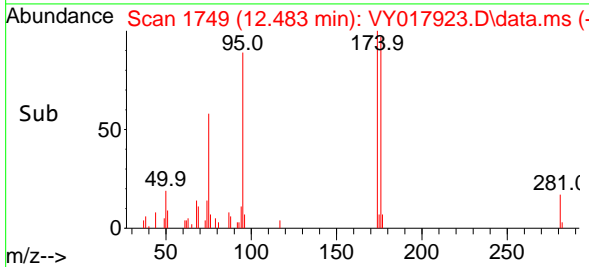
Tgt Ion:152 Resp: 2798
 Ion Ratio Lower Upper
 152 100
 115 55.3 28.2 84.7
 150 154.6 0.0 345.6

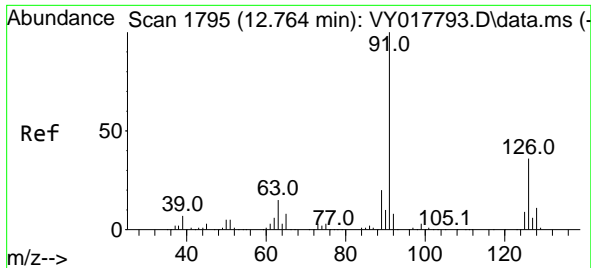


#76
 1,2,3-Trichloropropane
 Concen: 76.87 ug/l
 RT: 12.483 min Scan# 1749
 Delta R.T. -0.152 min
 Lab File: VY017923.D
 Acq: 12 Apr 2024 14:07



Tgt Ion: 75 Resp: 1960
 Ion Ratio Lower Upper
 75 100
 77 0.0 0.0 0.0

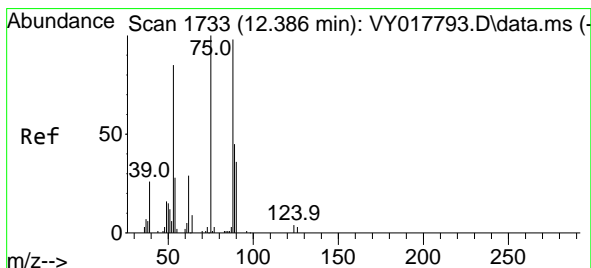
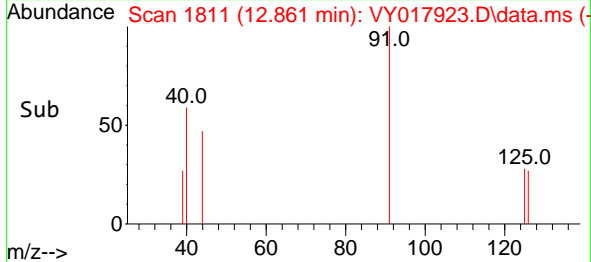
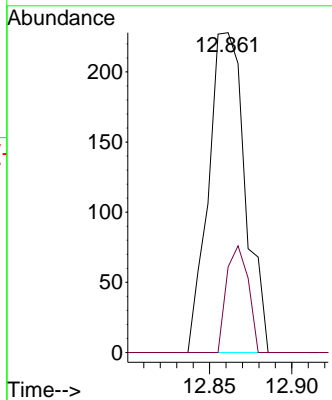
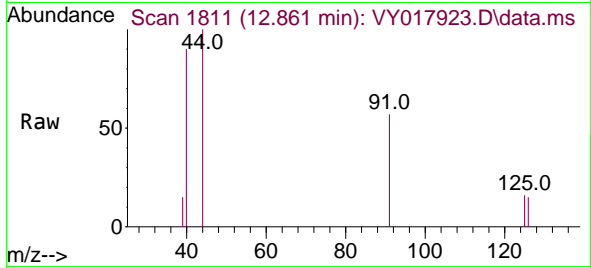




#79
 2-Chlorotoluene
 Concen: 2.70 ug/l
 RT: 12.861 min Scan# 1749
 Delta R.T. 0.098 min
 Lab File: VY017923.D
 Acq: 12 Apr 2024 14:07

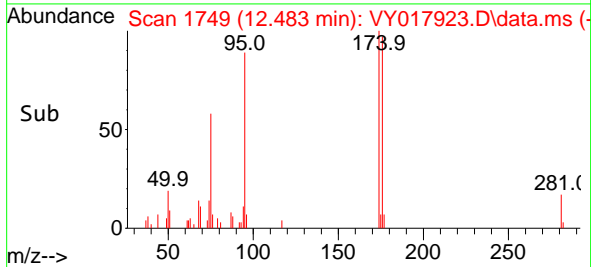
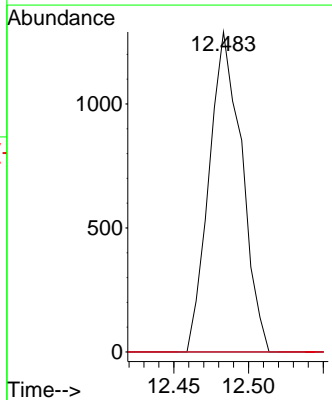
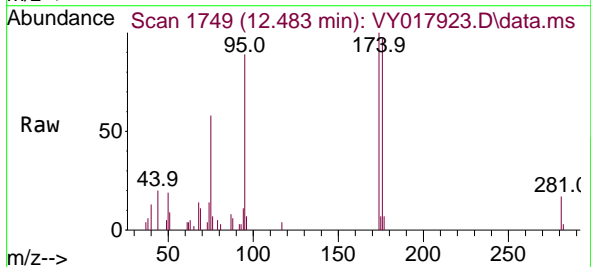
Instrument : MSVOA_Y
 ClientSampleId :

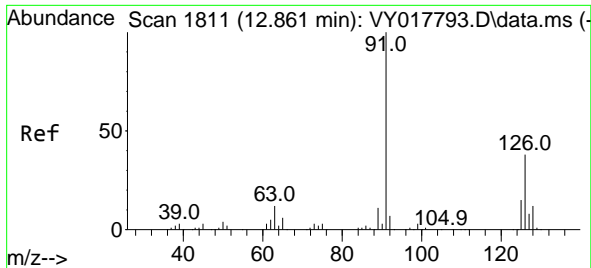
Tgt Ion: 91 Resp: 354
 Ion Ratio Lower Upper
 91 100
 126 19.5 17.8 53.5



#81
 trans-1,4-Dichloro-2-butene
 Concen: 137.60 ug/l
 RT: 12.483 min Scan# 1749
 Delta R.T. 0.097 min
 Lab File: VY017923.D
 Acq: 12 Apr 2024 14:07

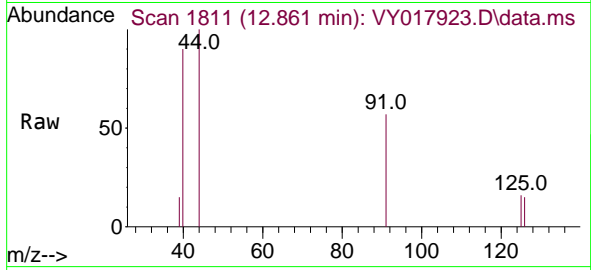
Tgt Ion: 75 Resp: 1960
 Ion Ratio Lower Upper
 75 100
 53 0.0 66.8 100.2#
 89 0.0 35.8 53.6#



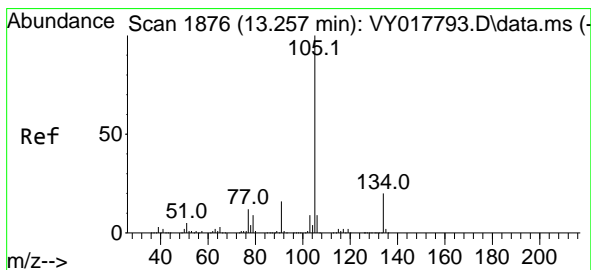
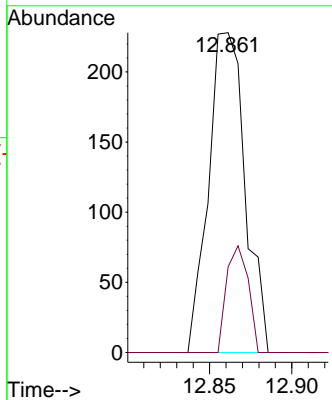
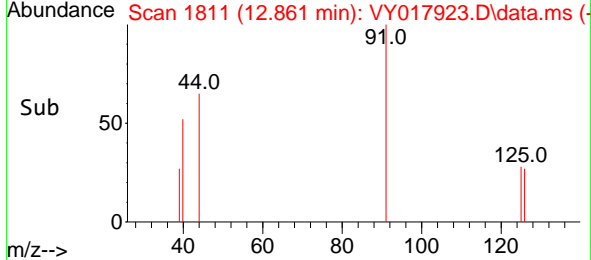


#82
 4-Chlorotoluene
 Concen: 2.61 ug/l
 RT: 12.861 min Scan# 1811
 Delta R.T. 0.000 min
 Lab File: VY017923.D
 Acq: 12 Apr 2024 14:07

Instrument : MSVOA_Y
 ClientSampleId :

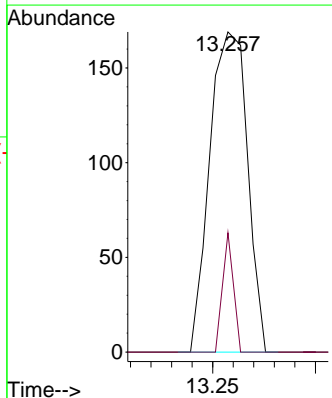
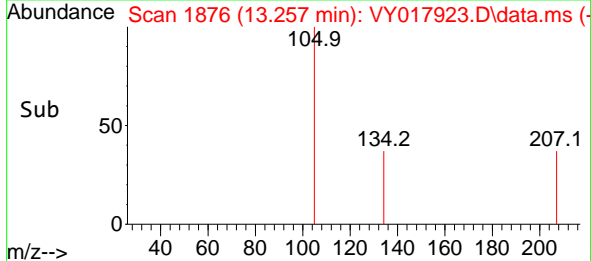
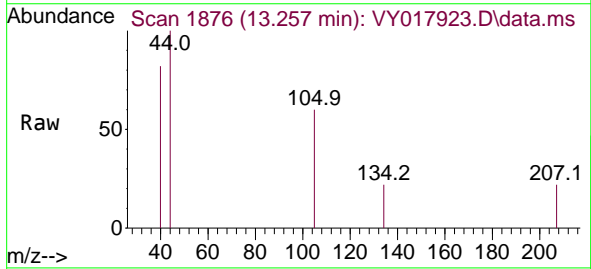


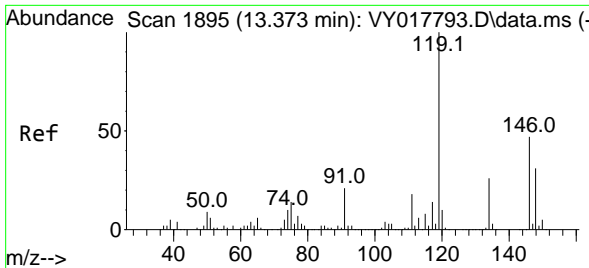
Tgt Ion: 91 Resp: 354
 Ion Ratio Lower Upper
 91 100
 126 19.5 17.6 52.9



#85
 sec-Butylbenzene
 Concen: 1.03 ug/l
 RT: 13.257 min Scan# 1876
 Delta R.T. 0.000 min
 Lab File: VY017923.D
 Acq: 12 Apr 2024 14:07

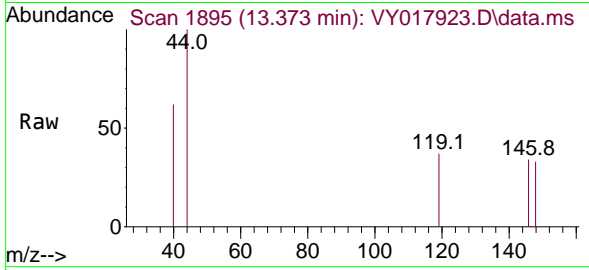
Tgt Ion: 105 Resp: 216
 Ion Ratio Lower Upper
 105 100
 134 10.6 10.1 30.1





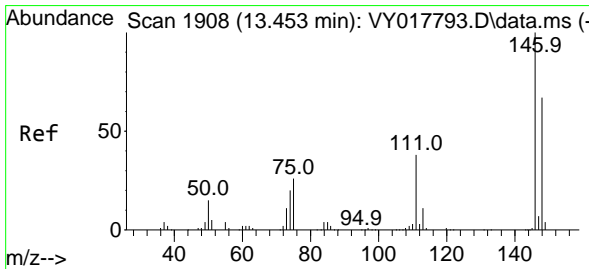
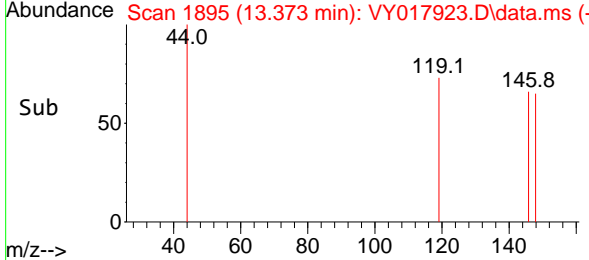
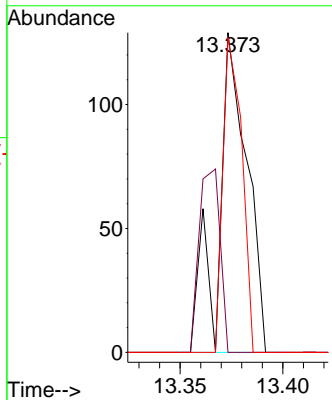
#87
 1,3-Dichlorobenzene
 Concen: 1.35 ug/l
 RT: 13.373 min Scan# 1895
 Delta R.T. 0.000 min
 Lab File: VY017923.D
 Acq: 12 Apr 2024 14:07

Instrument : MSVOA_Y
 ClientSampleId :

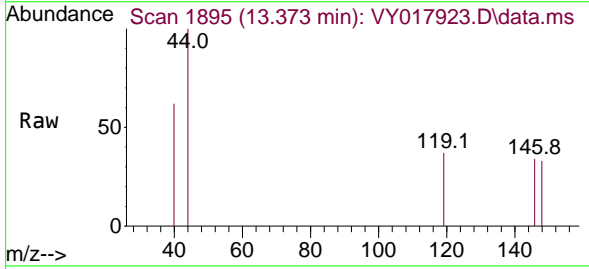


Tgt Ion:146 Resp: 125

Ion	Ratio	Lower	Upper
146	100		
111	42.4	19.0	57.0
148	64.8	31.7	95.1

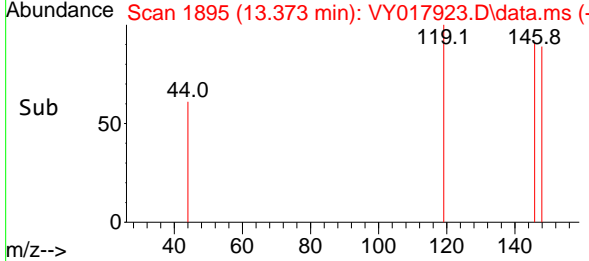
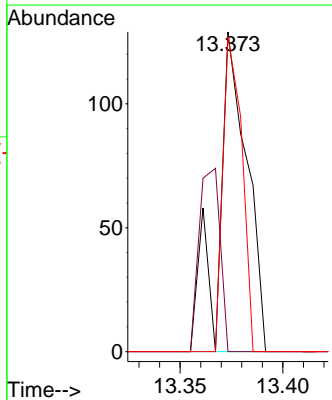


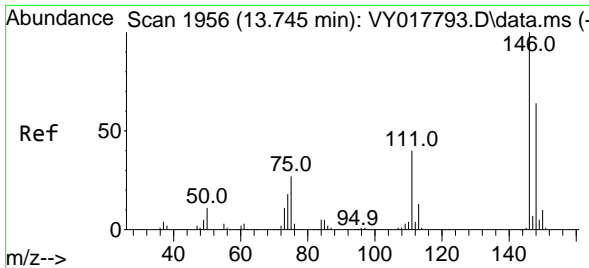
#88
 1,4-Dichlorobenzene
 Concen: 1.41 ug/l
 RT: 13.373 min Scan# 1895
 Delta R.T. -0.079 min
 Lab File: VY017923.D
 Acq: 12 Apr 2024 14:07



Tgt Ion:146 Resp: 125

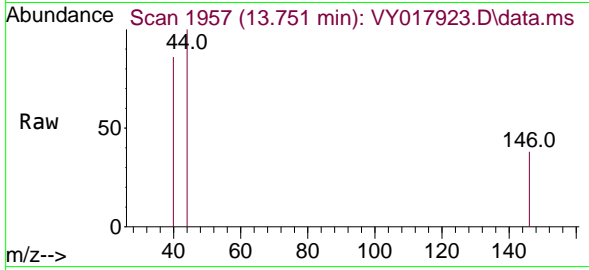
Ion	Ratio	Lower	Upper
146	100		
111	42.4	18.4	55.4
148	64.8	32.4	97.2



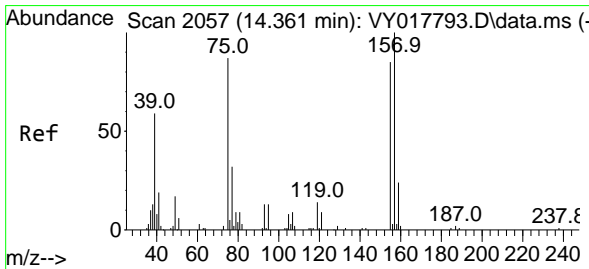
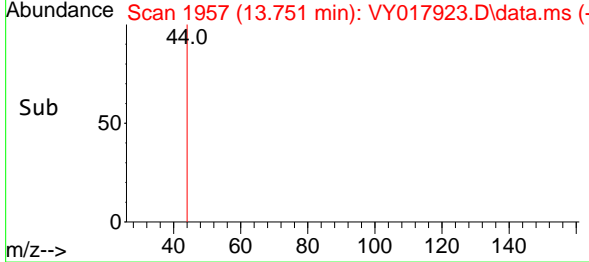
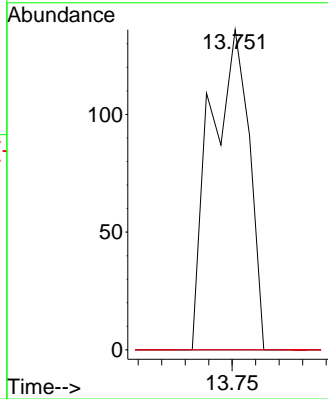


#91
 1,2-Dichlorobenzene
 Concen: 2.02 ug/l
 RT: 13.751 min Scan# 1956
 Delta R.T. 0.006 min
 Lab File: VY017923.D
 Acq: 12 Apr 2024 14:07

Instrument : MSVOA_Y
 ClientSampled :

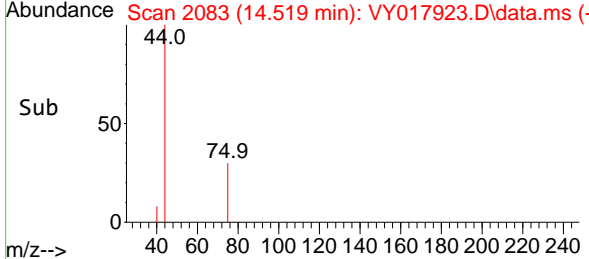
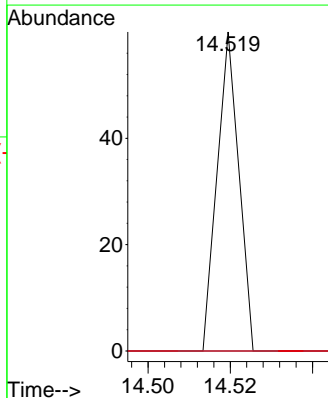
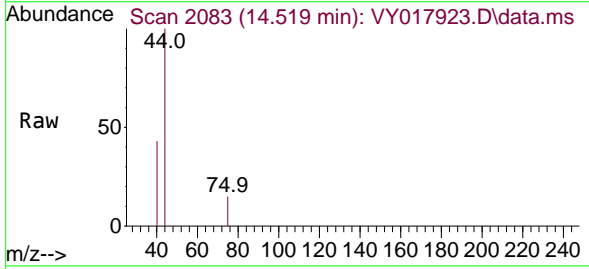


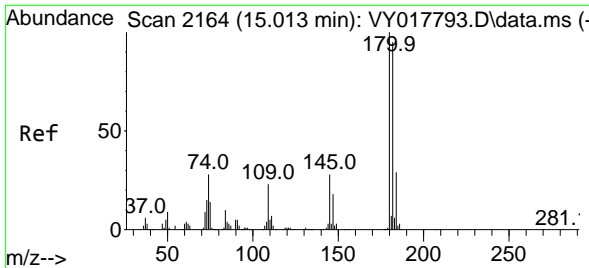
Tgt Ion:146 Resp: 155
 Ion Ratio Lower Upper
 146 100
 111 0.0 19.9 59.7#
 148 0.0 31.8 95.4#



#92
 1,2-Dibromo-3-Chloropropane
 Concen: 4.80 ug/l
 RT: 14.519 min Scan# 2083
 Delta R.T. 0.159 min
 Lab File: VY017923.D
 Acq: 12 Apr 2024 14:07

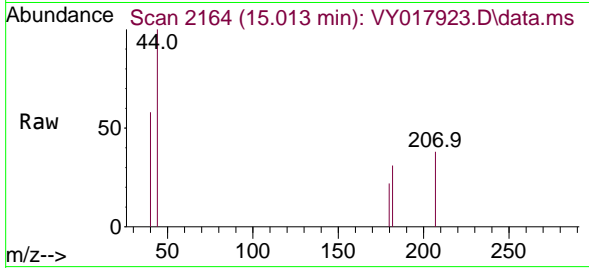
Tgt Ion: 75 Resp: 22
 Ion Ratio Lower Upper
 75 100
 155 0.0 48.6 145.8#
 157 0.0 62.7 188.2#



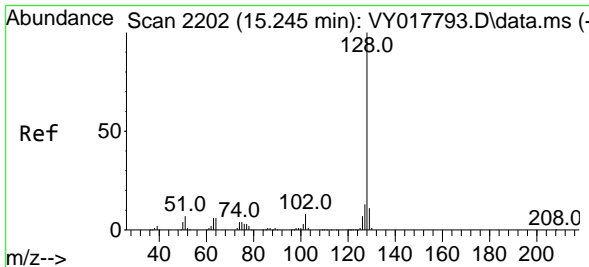
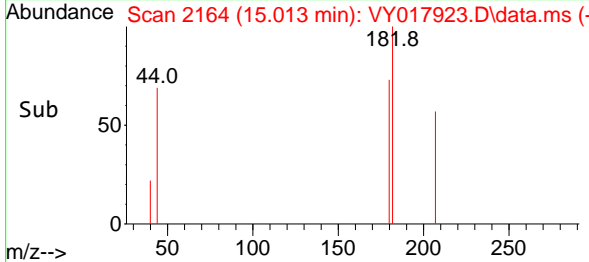
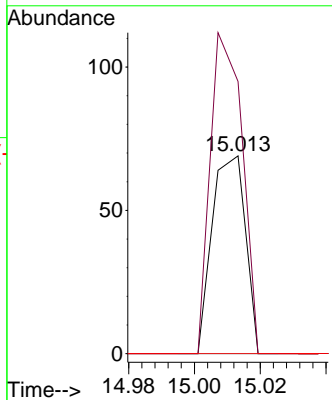


#93
 1,2,4-Trichlorobenzene
 Concen: 1.16 ug/l
 RT: 15.013 min Scan# 2164
 Delta R.T. 0.000 min
 Lab File: VY017923.D
 Acq: 12 Apr 2024 14:07

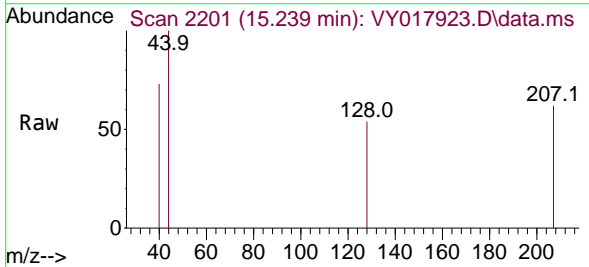
Instrument : MSVOA_Y
 ClientSampleId :



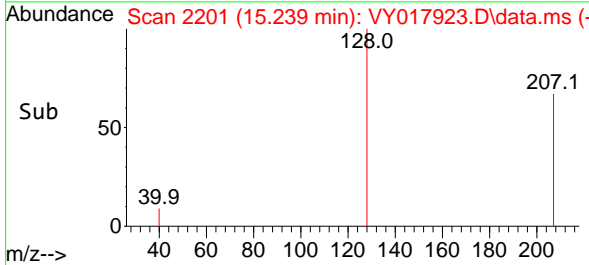
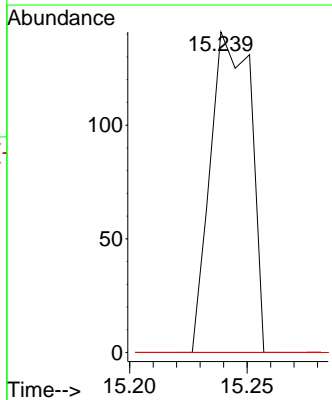
Tgt Ion:180 Resp: 49
 Ion Ratio Lower Upper
 180 100
 182 155.1 47.9 143.8#
 145 0.0 14.2 42.6#

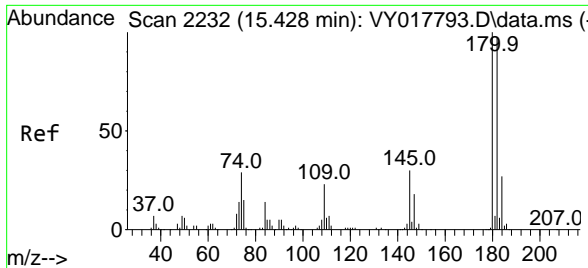


#95
 Naphthalene
 Concen: 3.66 ug/l
 RT: 15.239 min Scan# 2201
 Delta R.T. -0.006 min
 Lab File: VY017923.D
 Acq: 12 Apr 2024 14:07



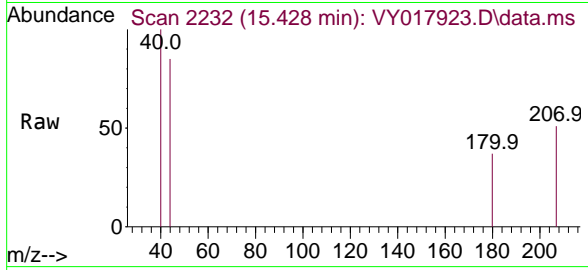
Tgt Ion:128 Resp: 168
 Ion Ratio Lower Upper
 128 100
 127 0.0 10.6 16.0#
 129 0.0 8.6 13.0#





#96
 1,2,3-Trichlorobenzene
 Concen: 2.50 ug/l
 RT: 15.428 min Scan# 21
 Delta R.T. 0.000 min
 Lab File: VY017923.D
 Acq: 12 Apr 2024 14:07

Instrument :
 MSVOA_Y
 ClientSampleId :



Tgt Ion:180 Resp: 89

Ion	Ratio	Lower	Upper
180	100		
182	0.0	47.6	142.9#
145	0.0	15.4	46.1#

