

Data Path : Z:\VOASRV\HPCHEM1\MSVOA Y\DATA\VY041320\
 Data File : VY002285.D
 Acq On : 13 Apr 2020 17:09
 Operator : SY/MD
 Sample : L2215-19
 Misc : 8.37G/5ML/MSVOA Y/SOIL
 ALS Vial : 12 Sample Multiplier: 1

Instrument :
 MSVOA_Y
 ClientSampleId :

Quant Time: Apr 14 06:17:57 2020
 Quant Method : Z:\VOASRV\HPCHEM1\MSVOA_Y\METHODS\82Y040820S.M
 Quant Title : SW846 8260
 QLast Update : Wed Apr 08 15:15:02 2020
 Response via : Initial Calibration

Internal Standards	R.T.	QIon	Response	Conc	Units	Dev(Min)
1) Pentafluorobenzene	7.82	168	8391	50.00	ug/l	0.01
34) 1,4-Difluorobenzene	8.71	114	16962	50.00	ug/l	0.00
63) Chlorobenzene-d5	11.50	117	15531	50.00	ug/l	0.00
72) 1,4-Dichlorobenzene-d4	13.44	152	5582	50.00	ug/l	0.00

System Monitoring Compounds

33) 1,2-Dichloroethane-d4	8.16	65	5460	58.51	ug/l	0.00
Spiked Amount				50.000		
Recovery						117.02%
35) Dibromofluoromethane	7.74	113	5045	49.99	ug/l	0.00
Spiked Amount				50.000		
Recovery						99.98%
50) Toluene-d8	10.19	98	21247	50.29	ug/l	0.00
Spiked Amount				50.000		
Recovery						100.58%
62) 4-Bromofluorobenzene	12.49	95	6944	49.82	ug/l	0.00
Spiked Amount				50.000		
Recovery						99.64%

Target Compounds

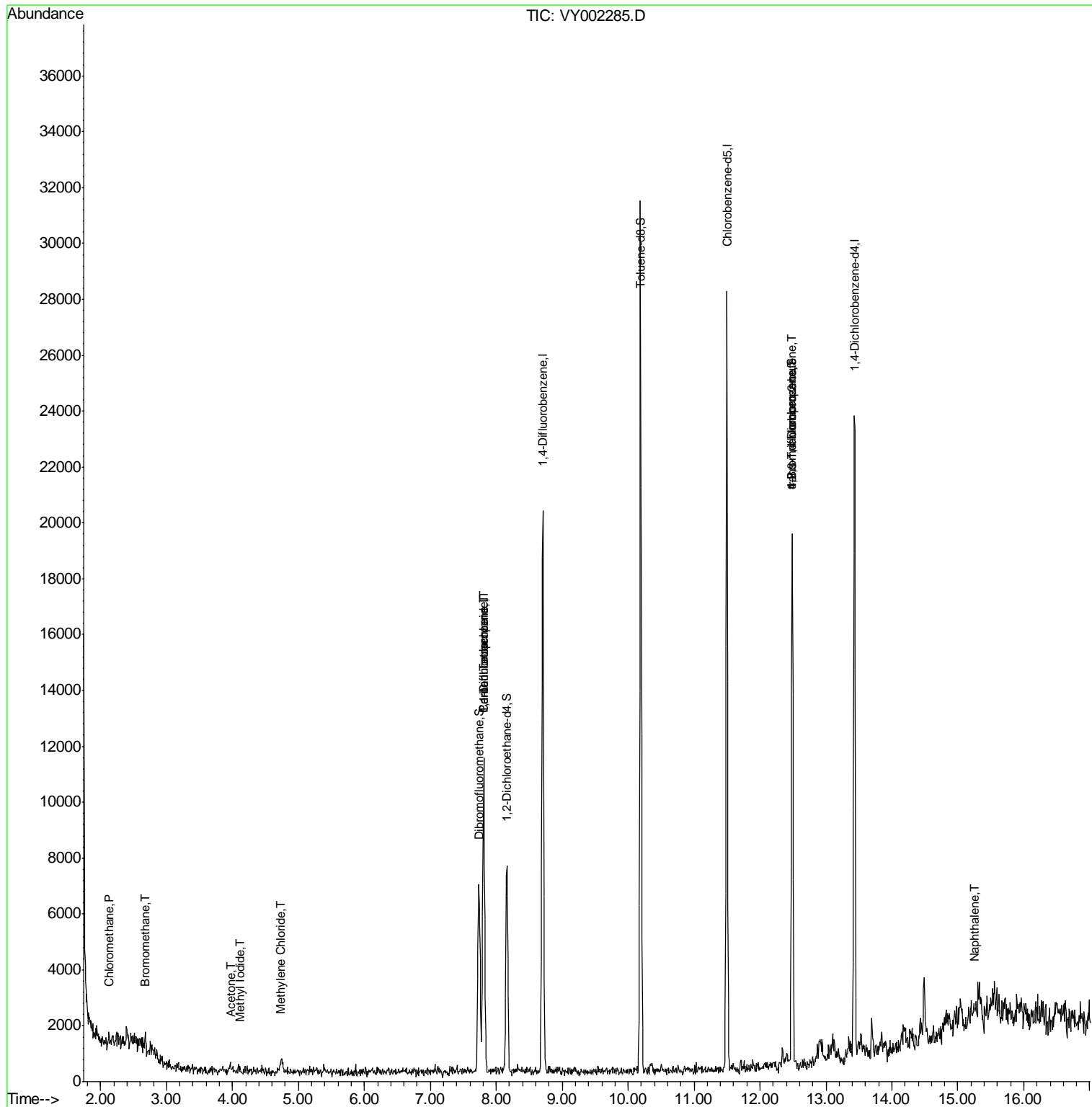
						Qvalue
3) Chloromethane	2.13	50	147	1.377	ug/l #	41
5) Bromomethane	2.68	94	139	1.981	ug/l #	61
10) Methyl Iodide	4.11	142	131	1.131	ug/l #	43
16) Acetone	3.97	43	424	17.252	ug/l #	59
20) Methylene Chloride	4.74	84	198	1.639	ug/l #	30
36) 1,1-Dichloropropene	7.81	75	749	4.483	ug/l #	47
38) Carbon Tetrachloride	7.80	117	1053	7.368	ug/l #	12
76) 1,2,3-Trichloropropane	12.49	75	3231	49.846	ug/l #	100
81) trans-1,4-Dichloro-2-buten	12.49	75	3231	96.950	ug/l #	19
95) Naphthalene	15.25	128	246	1.012	ug/l #	69

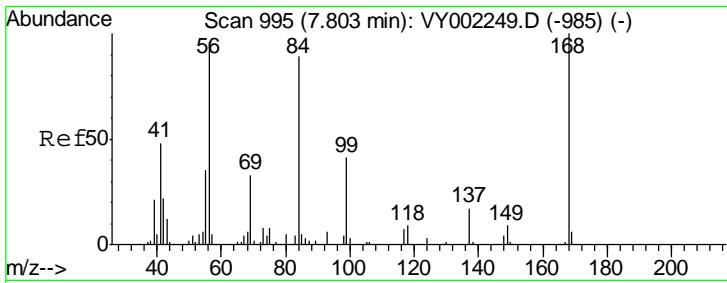
(#) = qualifier out of range (m) = manual integration (+) = signals summed

Data Path : Z:\VOASRV\HPCHEM1\MSVOA Y\DATA\VY041320\
 Data File : VY002285.D
 Acq On : 13 Apr 2020 17:09
 Operator : SY/MD
 Sample : L2215-19
 Misc : 8.37G/5ML/MSVOA Y/SOIL
 ALS Vial : 12 Sample Multiplier: 1

Instrument :
 MSVOA_Y
 Client Sampled :

Quant Time: Apr 14 06:17:57 2020
 Quant Method : Z:\VOASRV\HPCHEM1\MSVOA_Y\METHODS\82Y040820S.M
 Quant Title : SW846 8260
 QLast Update : Wed Apr 08 15:15:02 2020
 Response via : Initial Calibration

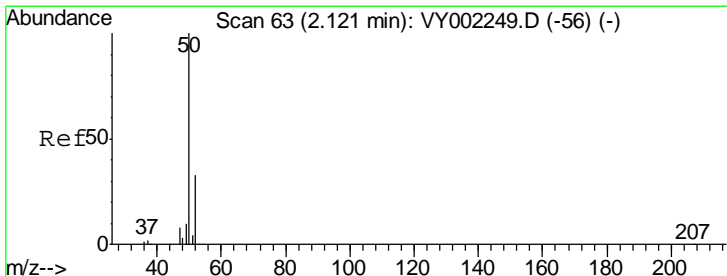
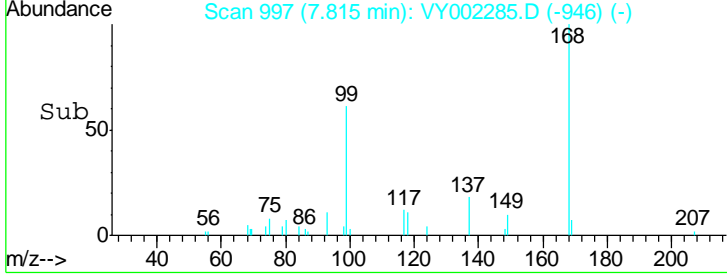
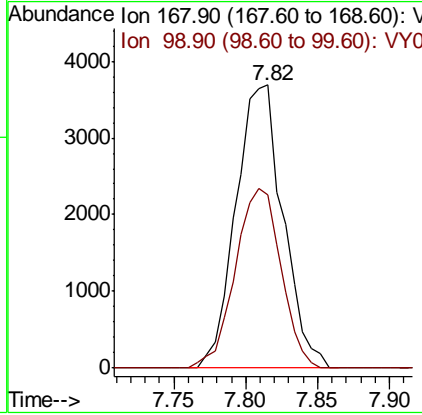
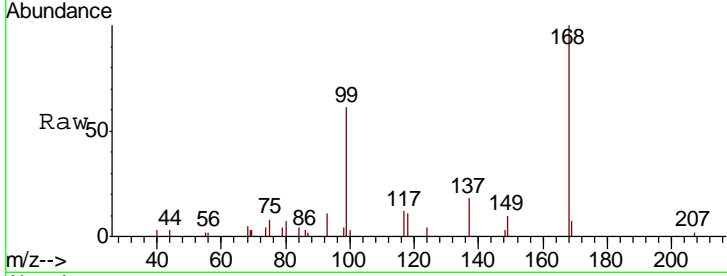




#1
 Pentafluorobenzene
 Concen: 50.000 ug/l
 RT: 7.82 min Scan# 997
 Delta R.T. 0.01 min
 Lab File: VY002285.D
 Acq: 13 Apr 2020 17:09

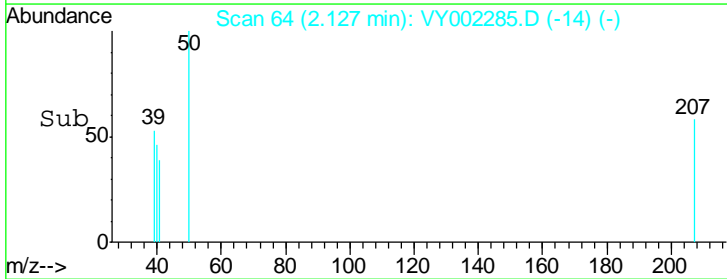
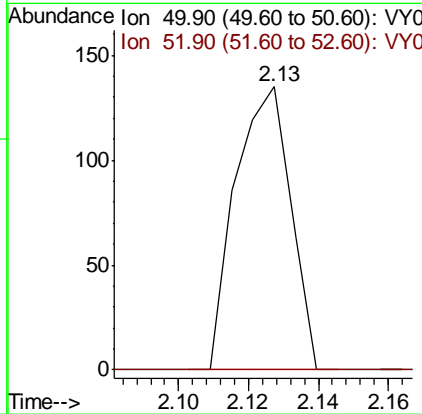
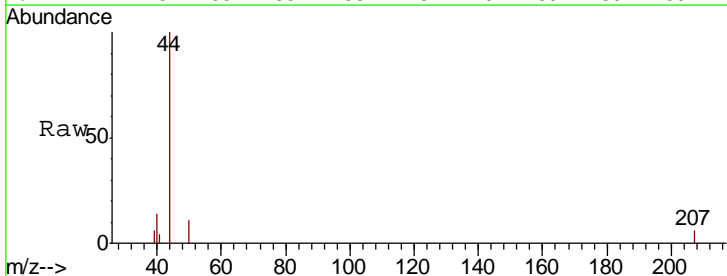
Instrument :
 MSVOA_Y
 ClientSampled :

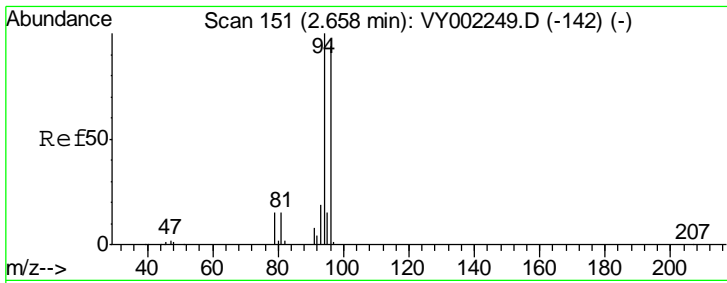
Tgt Ion	Resp	Lower	Upper
168	100		
99	61.1	48.0	72.0



#3
 Chloromethane
 Concen: 1.377 ug/l
 RT: 2.13 min Scan# 64
 Delta R.T. 0.01 min
 Lab File: VY002285.D
 Acq: 13 Apr 2020 17:09

Tgt Ion	Resp	Lower	Upper
50	100		
52	0.0	26.6	39.8#

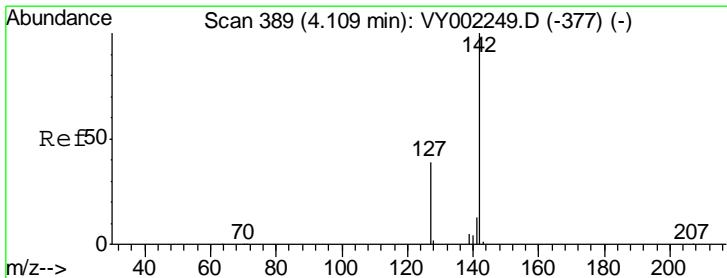
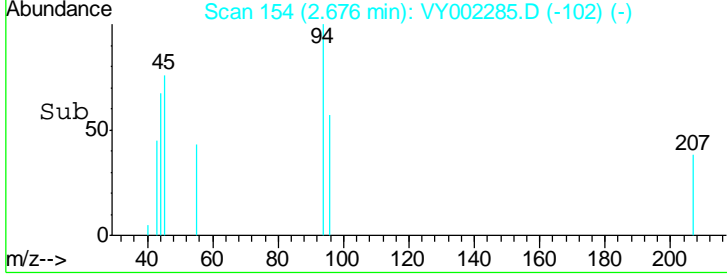
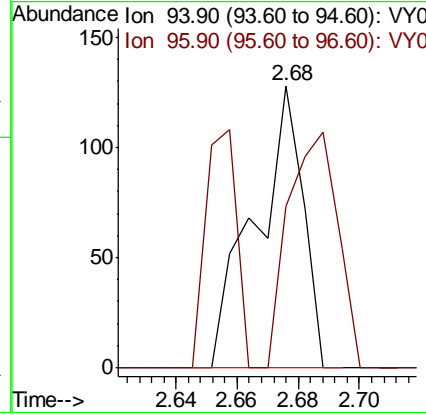
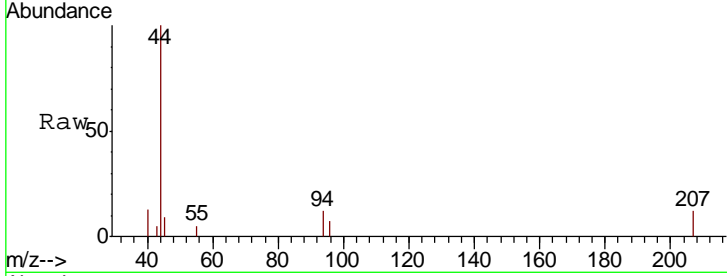




#5
 Bromomethane
 Concen: 1.981 ug/l
 RT: 2.68 min Scan# 154
 Delta R.T. 0.02 min
 Lab File: VY002285.D
 Acq: 13 Apr 2020 17:09

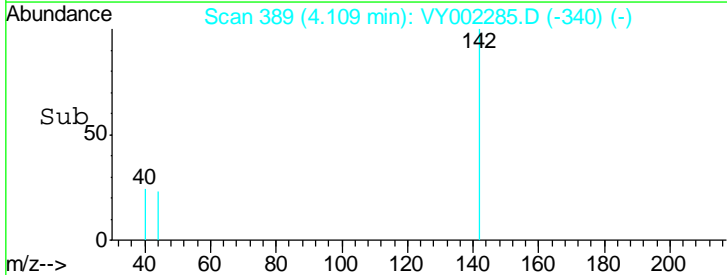
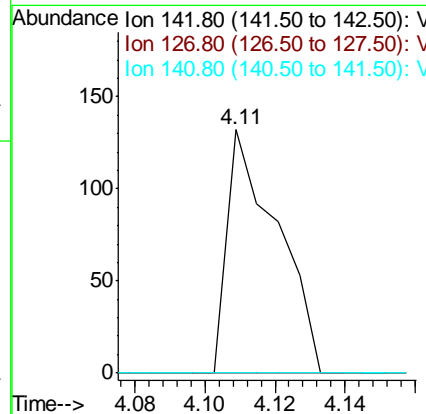
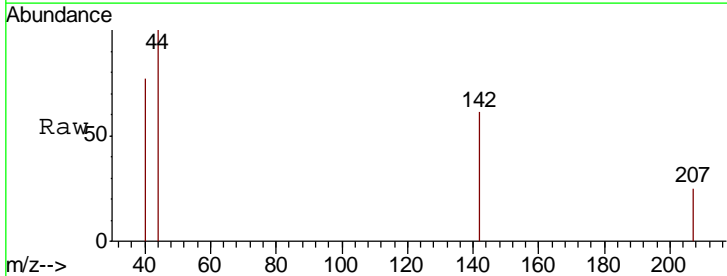
Instrument :
 MSVOA_Y
 ClientSampled :

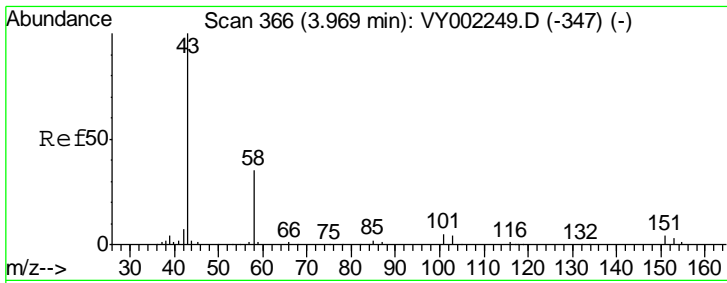
Tgt Ion: 94 Resp: 139
 Ion Ratio Lower Upper
 94 100
 96 57.0 75.6 113.4#



#10
 Methyl Iodide
 Concen: 1.131 ug/l
 RT: 4.11 min Scan# 389
 Delta R.T. -0.00 min
 Lab File: VY002285.D
 Acq: 13 Apr 2020 17:09

Tgt Ion: 142 Resp: 131
 Ion Ratio Lower Upper
 142 100
 127 0.0 32.4 48.6#
 141 0.0 11.2 16.8#

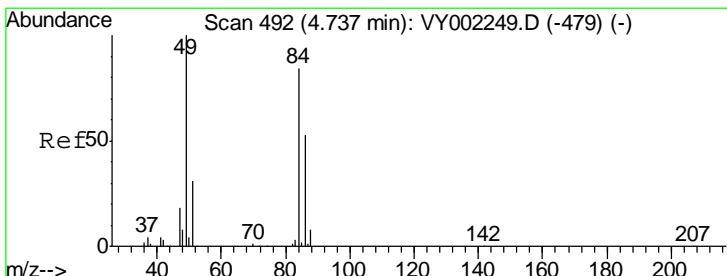
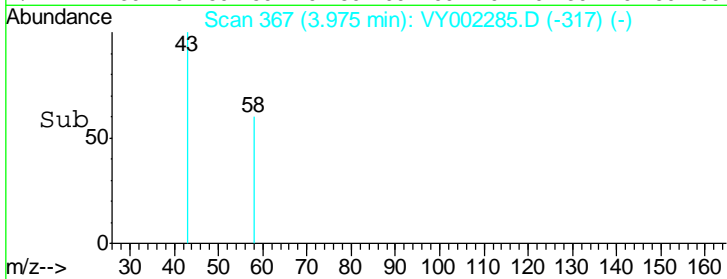
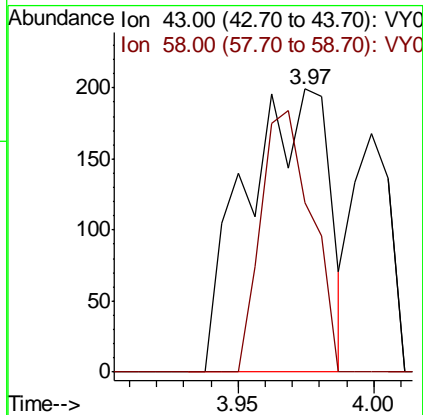
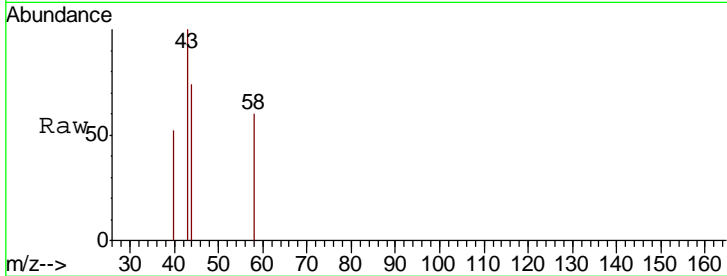




#16
 Acetone
 Concen: 17.252 ug/l
 RT: 3.97 min Scan# 367
 Delta R.T. 0.01 min
 Lab File: VY002285.D
 Acq: 13 Apr 2020 17:09

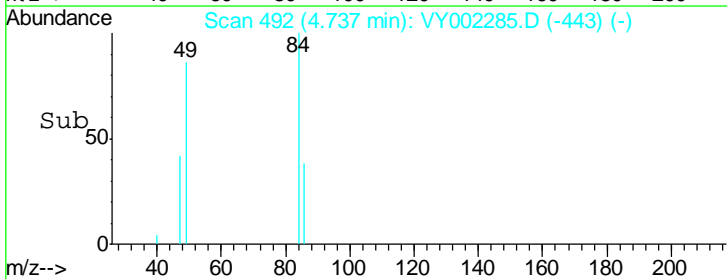
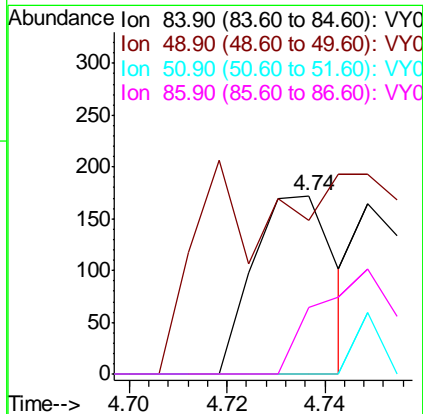
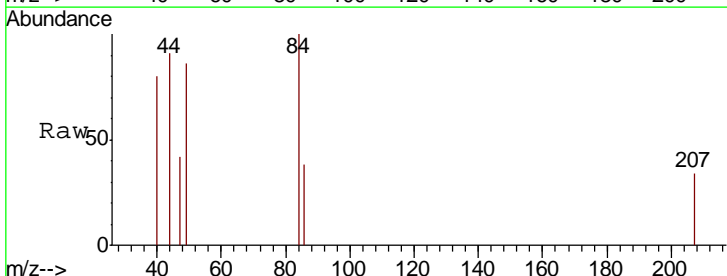
Instrument :
 MSVOA_Y
 ClientSampled :

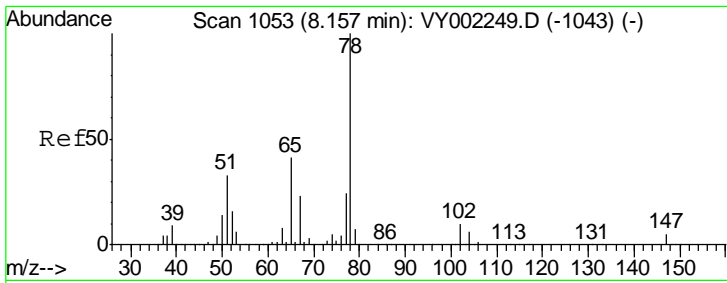
Tgt Ion	Ratio	Lower	Upper
43	100		
58	59.8	28.5	42.7#



#20
 Methylene Chloride
 Concen: 1.639 ug/l
 RT: 4.74 min Scan# 492
 Delta R.T. -0.00 min
 Lab File: VY002285.D
 Acq: 13 Apr 2020 17:09

Tgt Ion	Ratio	Lower	Upper
84	100		
49	17.4	95.5	143.3#
51	0.0	29.5	44.3#
86	37.8	50.7	76.1#

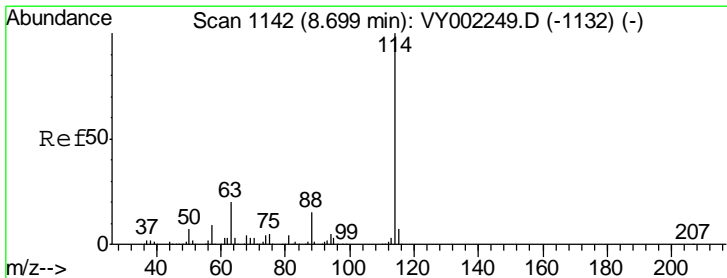
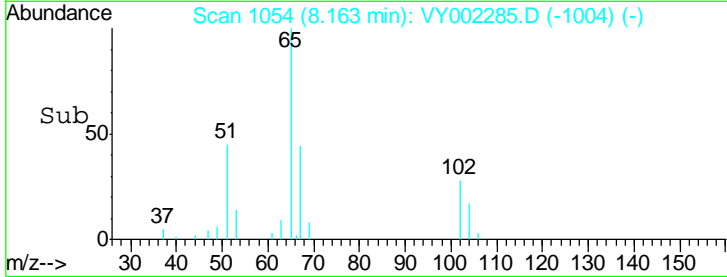
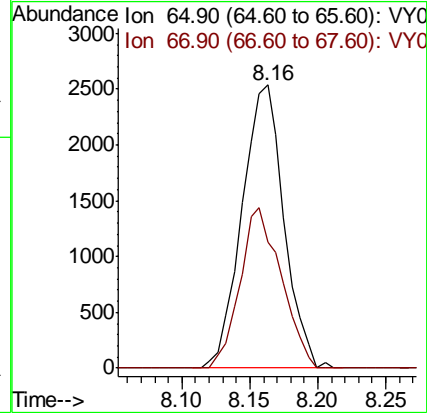
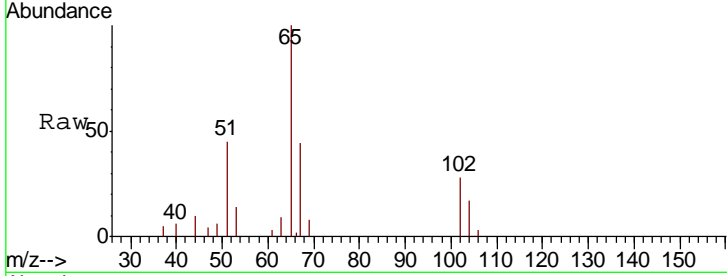




#33
 1,2-Dichloroethane-d4
 Concen: 58.512 ug/l
 RT: 8.16 min Scan# 1054
 Delta R.T. 0.01 min
 Lab File: VY002285.D
 Acq: 13 Apr 2020 17:09

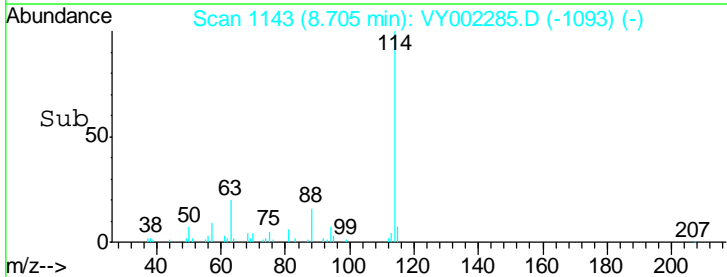
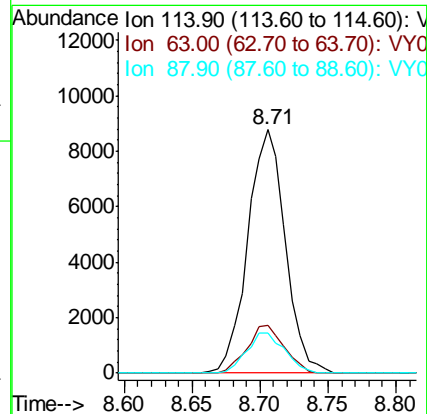
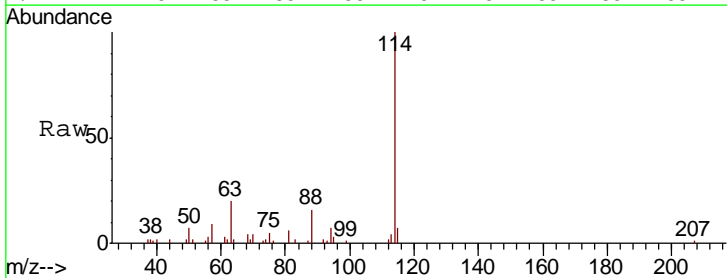
Instrument :
 MSVOA_Y
 ClientSampled :

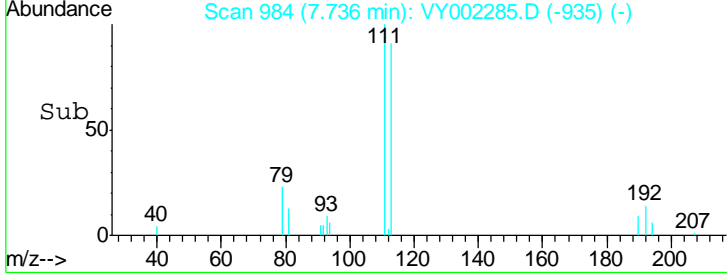
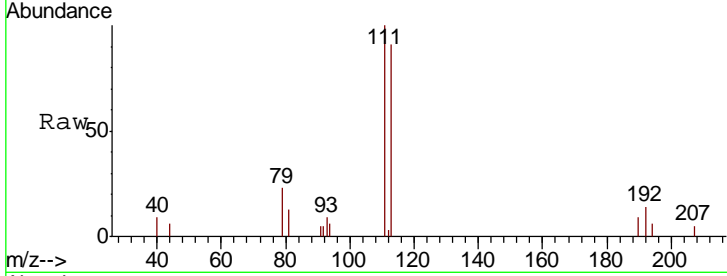
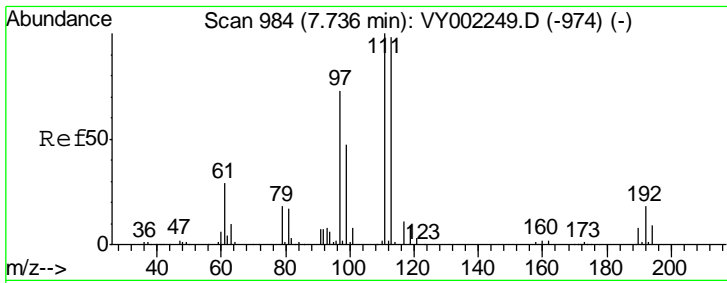
Tgt Ion: 65 Resp: 5460
 Ion Ratio Lower Upper
 65 100
 67 55.7 0.0 114.0



#34
 1,4-Difluorobenzene
 Concen: 50.000 ug/l
 RT: 8.71 min Scan# 1143
 Delta R.T. 0.01 min
 Lab File: VY002285.D
 Acq: 13 Apr 2020 17:09

Tgt Ion: 114 Resp: 16962
 Ion Ratio Lower Upper
 114 100
 63 19.7 0.0 39.0
 88 16.4 0.0 31.0

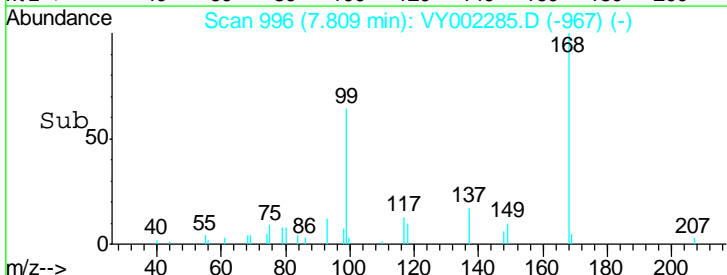
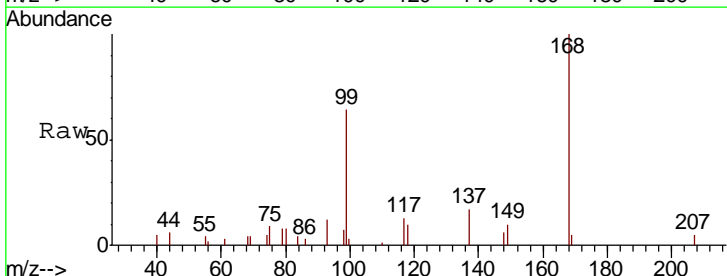
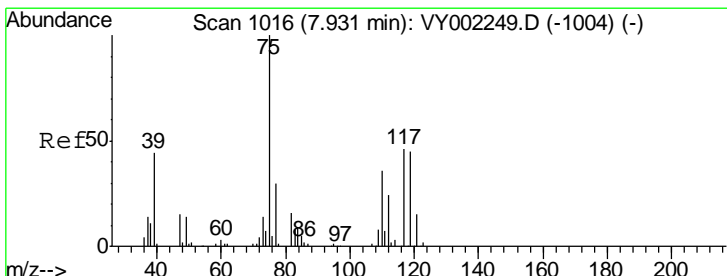
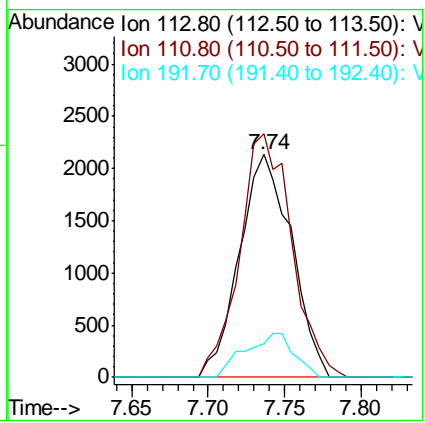




#35
 Dibromofluoromethane
 Concen: 49.985 ug/l
 RT: 7.74 min Scan# 984
 Delta R.T. -0.00 min
 Lab File: VY002285.D
 Acq: 13 Apr 2020 17:09

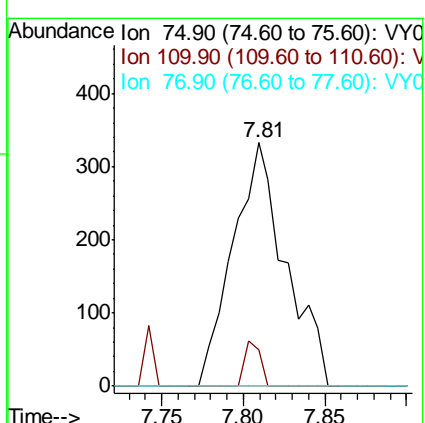
Instrument :
 MSVOA_Y
 ClientSampled :

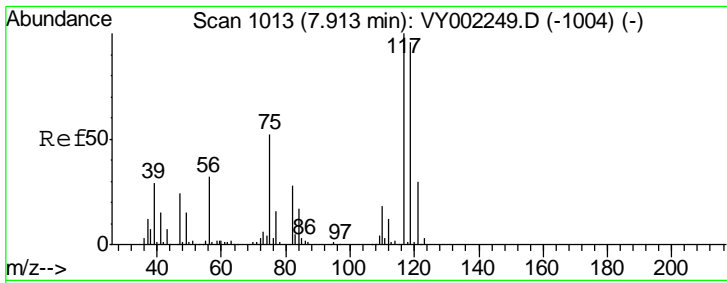
Tgt Ion	Resp	Lower	Upper
113	100		
111	109.3	83.5	125.3
192	18.5	14.7	22.1



#36
 1,1-Dichloropropene
 Concen: 4.483 ug/l
 RT: 7.81 min Scan# 996
 Delta R.T. -0.12 min
 Lab File: VY002285.D
 Acq: 13 Apr 2020 17:09

Tgt Ion	Resp	Lower	Upper
75	100		
110	5.5	17.8	53.3#
77	0.0	24.4	36.6#

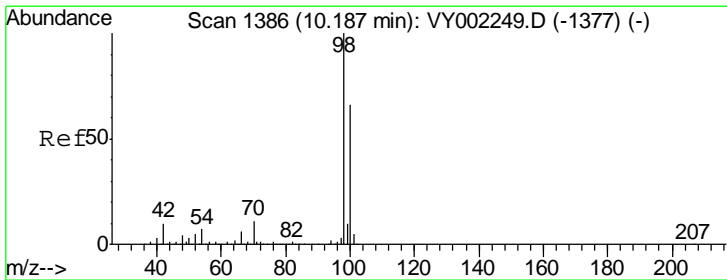
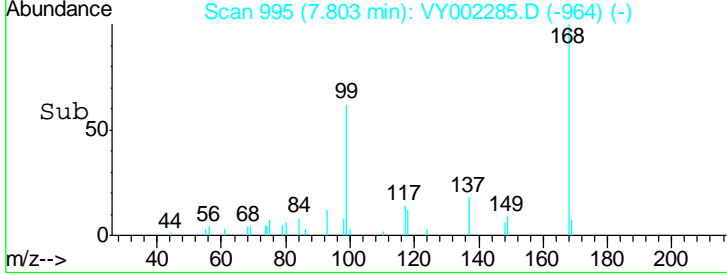
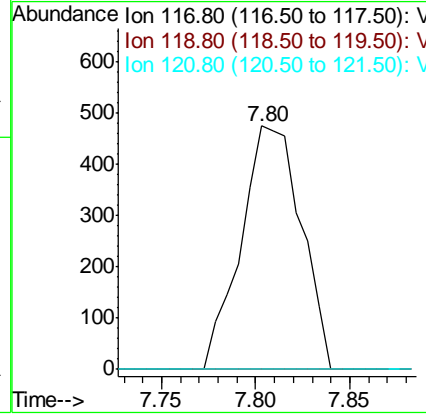
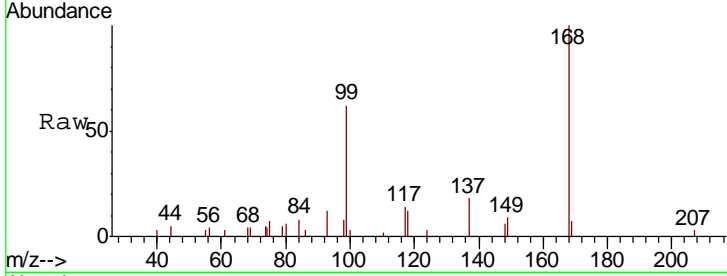




#38
 Carbon Tetrachloride
 Concen: 7.368 ug/l
 RT: 7.80 min Scan# 995
 Delta R.T. -0.11 min
 Lab File: VY002285.D
 Acq: 13 Apr 2020 17:09

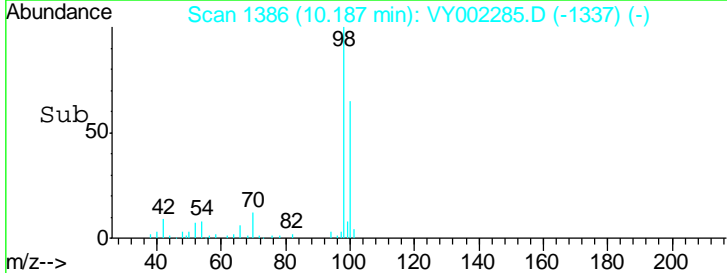
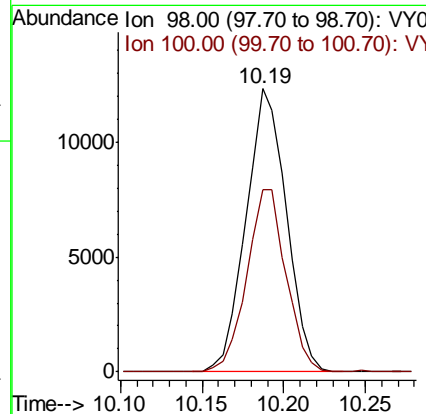
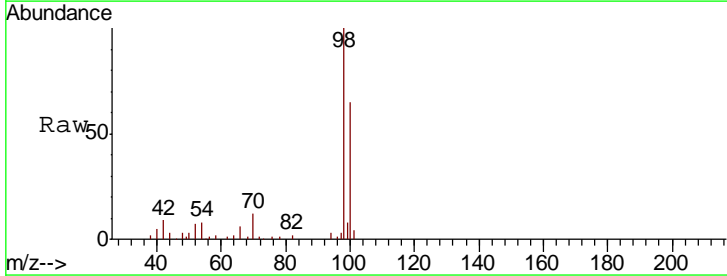
Instrument :
 MSVOA_Y
 ClientSampled :

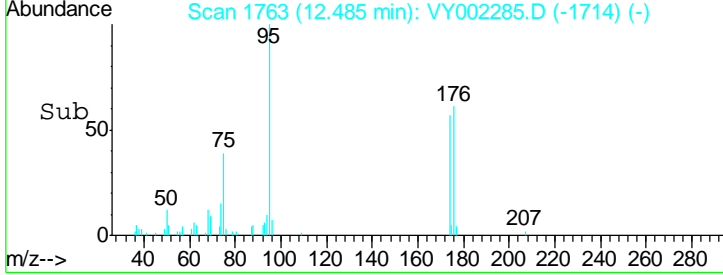
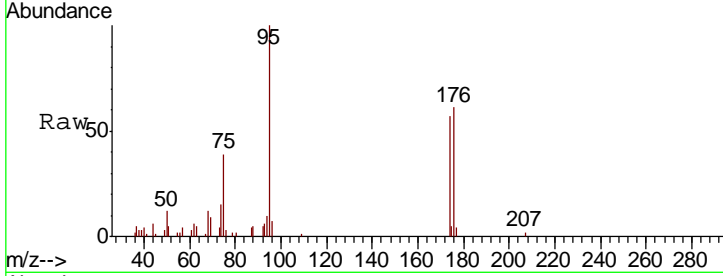
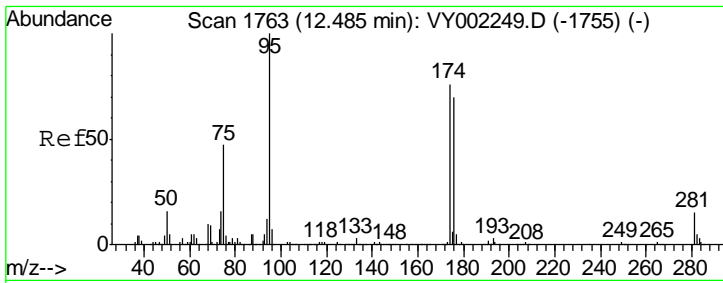
Tgt Ion	Resp	Lower	Upper
117	1053		
119	0.0	77.1	115.7#
121	0.0	23.9	35.9#



#50
 Toluene-d8
 Concen: 50.295 ug/l
 RT: 10.19 min Scan# 1386
 Delta R.T. -0.00 min
 Lab File: VY002285.D
 Acq: 13 Apr 2020 17:09

Tgt Ion	Resp	Lower	Upper
98	21247		
100	62.6	52.6	78.8

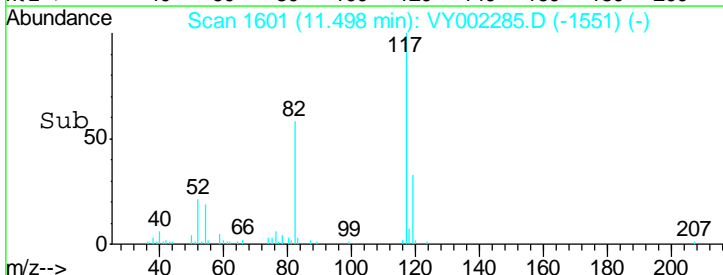
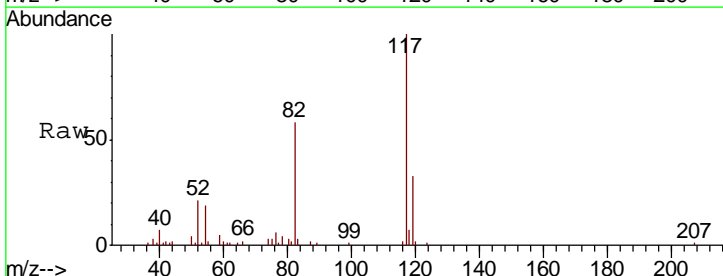
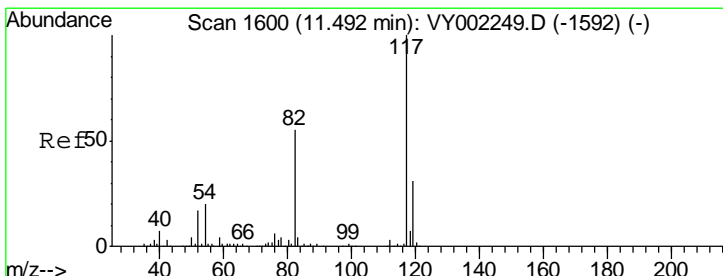
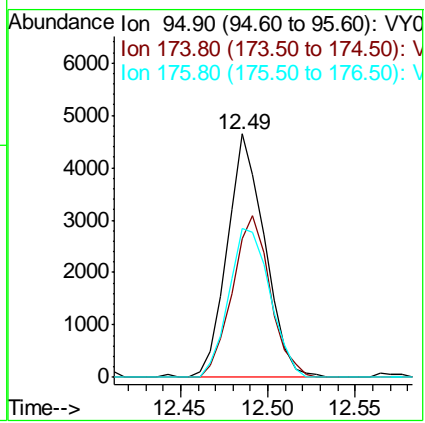




#62
 4-Bromofluorobenzene
 Concen: 49.824 ug/l
 RT: 12.49 min Scan# 1763
 Delta R.T. -0.00 min
 Lab File: VY002285.D
 Acq: 13 Apr 2020 17:09

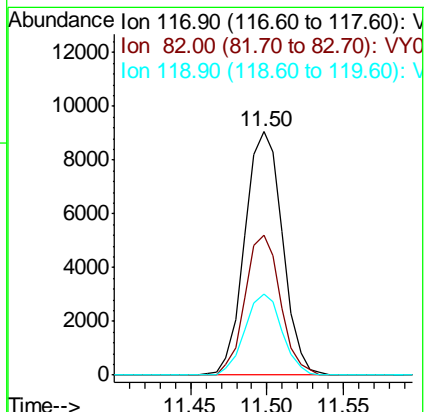
Instrument :
 MSVOA_Y
 ClientSampled :

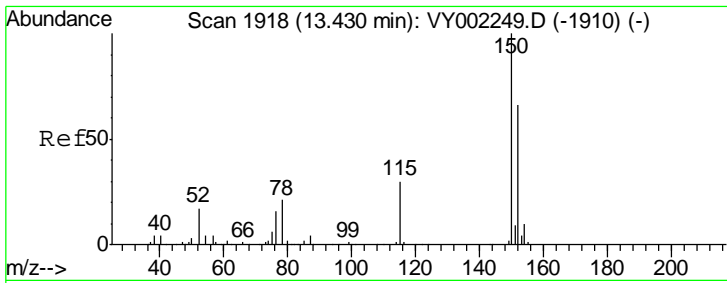
Tgt Ion	Resp	Lower	Upper
95	6944		
174	67.0	0.0	150.6
176	67.1	0.0	141.4



#63
 Chlorobenzene-d5
 Concen: 50.000 ug/l
 RT: 11.50 min Scan# 1601
 Delta R.T. 0.01 min
 Lab File: VY002285.D
 Acq: 13 Apr 2020 17:09

Tgt Ion	Resp	Lower	Upper
117	15531		
82	57.6	44.2	66.4
119	33.3	25.1	37.7

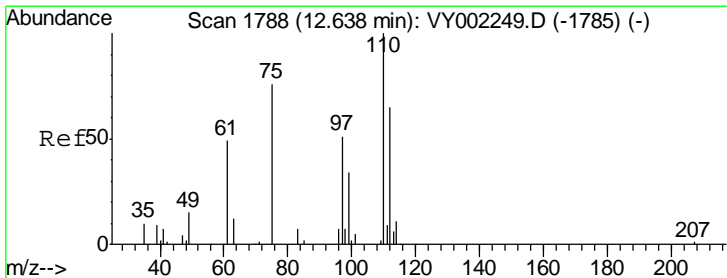
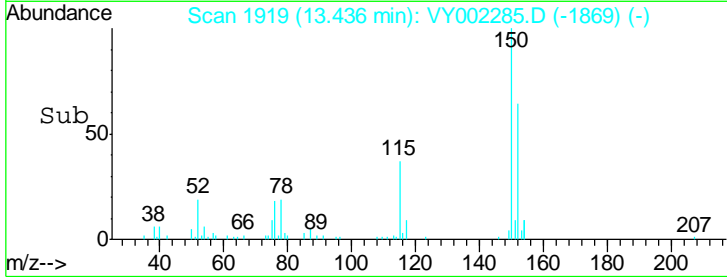
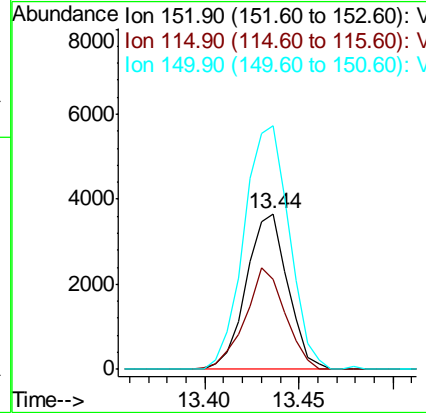
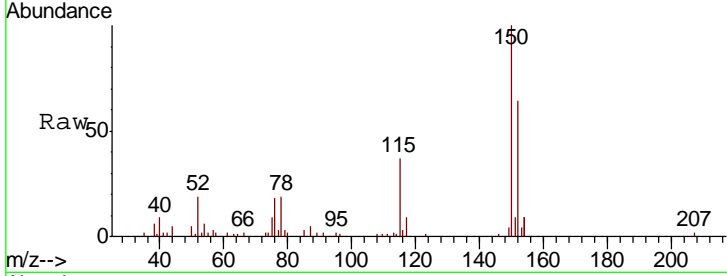




#72
 1,4-Dichlorobenzene-d4
 Concen: 50.000 ug/l
 RT: 13.44 min Scan# 1919
 Delta R.T. 0.01 min
 Lab File: VY002285.D
 Acq: 13 Apr 2020 17:09

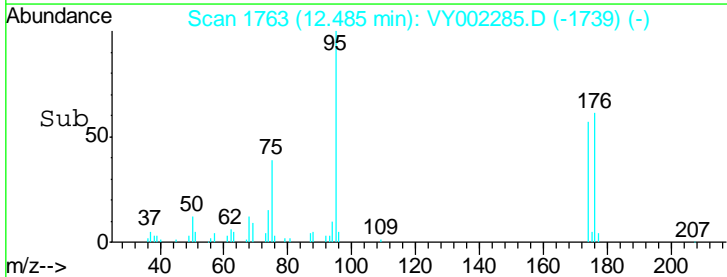
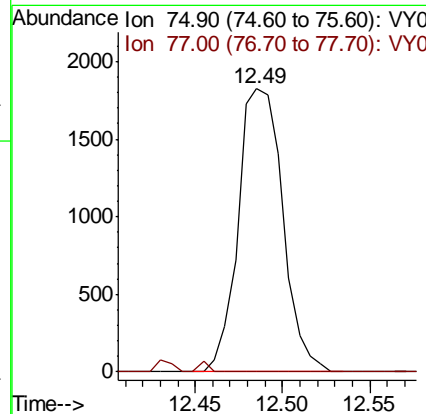
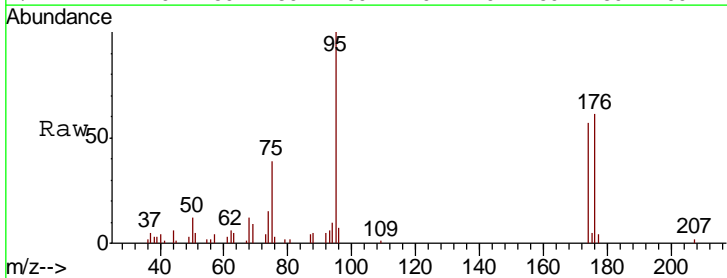
Instrument :
 MSVOA_Y
 ClientSampled :

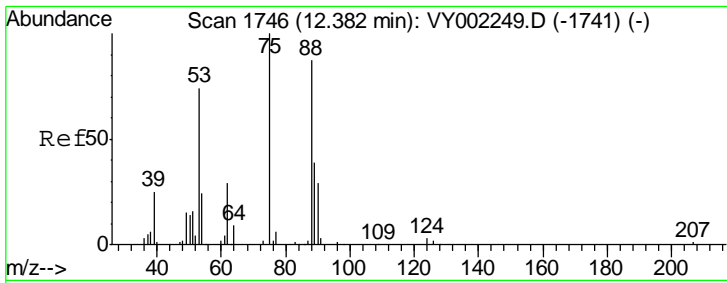
Tgt Ion	Resp	Lower	Upper
152	100		
115	63.2	30.7	92.1
150	170.5	0.0	350.6



#76
 1,2,3-Trichloropropane
 Concen: 49.846 ug/l
 RT: 12.49 min Scan# 1763
 Delta R.T. -0.15 min
 Lab File: VY002285.D
 Acq: 13 Apr 2020 17:09

Tgt Ion	Resp	Lower	Upper
75	100		
77	0.0	0.0	0.0

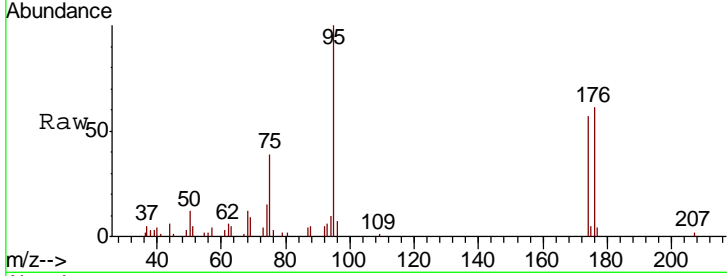




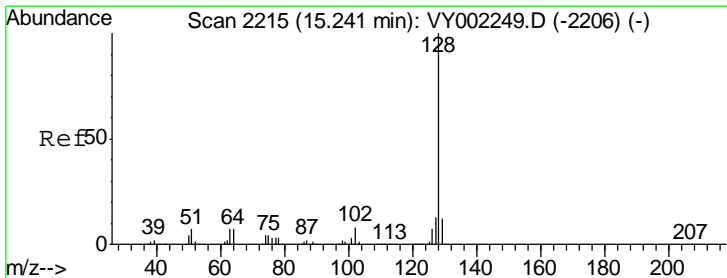
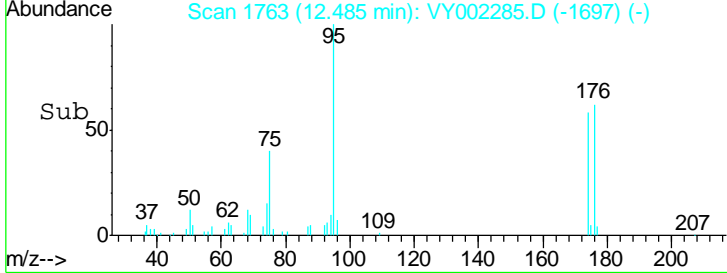
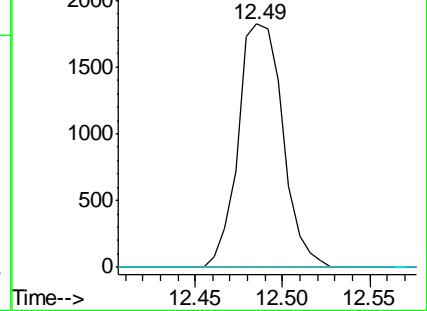
#81
 trans-1,4-Dichloro-2-butene
 Concen: 96.950 ug/l
 RT: 12.49 min Scan# 1763
 Delta R.T. 0.10 min
 Lab File: VY002285.D
 Acq: 13 Apr 2020 17:09

Instrument :
 MSVOA_Y
 ClientSampled :

Tgt Ion	Resp	Lower	Upper
75	100		
53	0.0	59.8	89.8#
89	0.0	37.0	55.6#

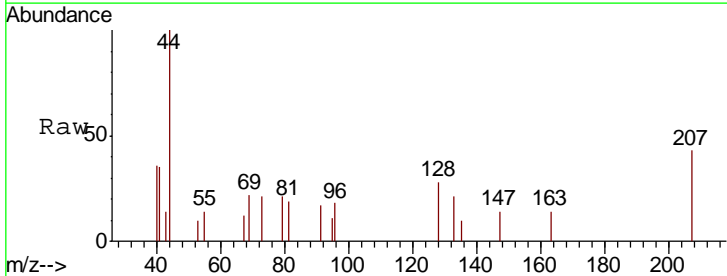


Abundance Ion 74.90 (74.60 to 75.60): VY0
 Ion 53.00 (52.70 to 53.70): VY0
 Ion 88.90 (88.60 to 89.60): VY0



#95
 Naphthalene
 Concen: 1.012 ug/l
 RT: 15.25 min Scan# 2217
 Delta R.T. 0.01 min
 Lab File: VY002285.D
 Acq: 13 Apr 2020 17:09

Tgt Ion	Resp	Lower	Upper
128	100		
127	0.0	10.1	15.1#
129	0.0	8.7	13.1#



Abundance Ion 128.00 (127.70 to 128.70): V
 Ion 127.00 (126.70 to 127.70): V
 Ion 129.00 (128.70 to 129.70): V

