

Data Path : Z:\voasrv\HPCHEM1\MSVOA_Y\Data\VY041323\
 Data File : VY013292.D
 Acq On : 13 Apr 2023 13:44
 Operator : KP/MD
 Sample : 02256-01
 Misc : 5.05g/5.0mL/MSVOA_Y/SOIL
 ALS Vial : 12 Sample Multiplier: 1

Instrument :
 MSVOA_Y
 ClientSampleId :
 360

Integration Parameters: RTEINT.P

Integrator: RTE
 Smoothing : ON Filtering: 5
 Sampling : 1 Min Area: 3 % of largest Peak
 Start Thrs: 0.2 Max Peaks: 100
 Stop Thrs : 0 Peak Location: TOP

If leading or trailing edge < 100 prefer < Baseline drop else tangent >
 Peak separation: 5

Method : Z:\voasrv\HPCHEM1\MSVOA_Y\methods\82Y041223S.M
 Title : SW846 8260

Signal : TIC: VY013292.D\data.ms

peak #	R.T. min	first scan	max scan	last scan	PK TY	peak height	corr. area	corr. % max.	% of total
1	4.704	463	473	489	rBV	37928	117008	10.39%	1.977%
2	7.710	954	966	972	rBV	166681	396866	35.26%	6.705%
3	7.783	972	978	991	rVB	274340	613744	54.52%	10.370%
4	8.136	1026	1036	1047	rBV	162234	363292	32.27%	6.138%
5	8.685	1118	1126	1139	rBV	409701	809349	71.90%	13.675%
6	9.740	1290	1299	1305	rBV3	6439	13321	1.18%	0.225%
7	10.173	1363	1370	1379	rBV	660822	1125647	100.00%	19.019%
8	10.575	1428	1436	1442	rVB	6649	12548	1.11%	0.212%
9	11.483	1577	1585	1599	rBV	552102	913322	81.14%	15.431%
10	12.477	1741	1748	1758	rBV	433965	696419	61.87%	11.767%
11	13.422	1897	1903	1911	rBV	516855	795967	70.71%	13.449%
12	13.959	1985	1991	1998	rVB2	21261	35014	3.11%	0.592%
13	15.312	2205	2213	2218	rBV	14633	26128	2.32%	0.441%

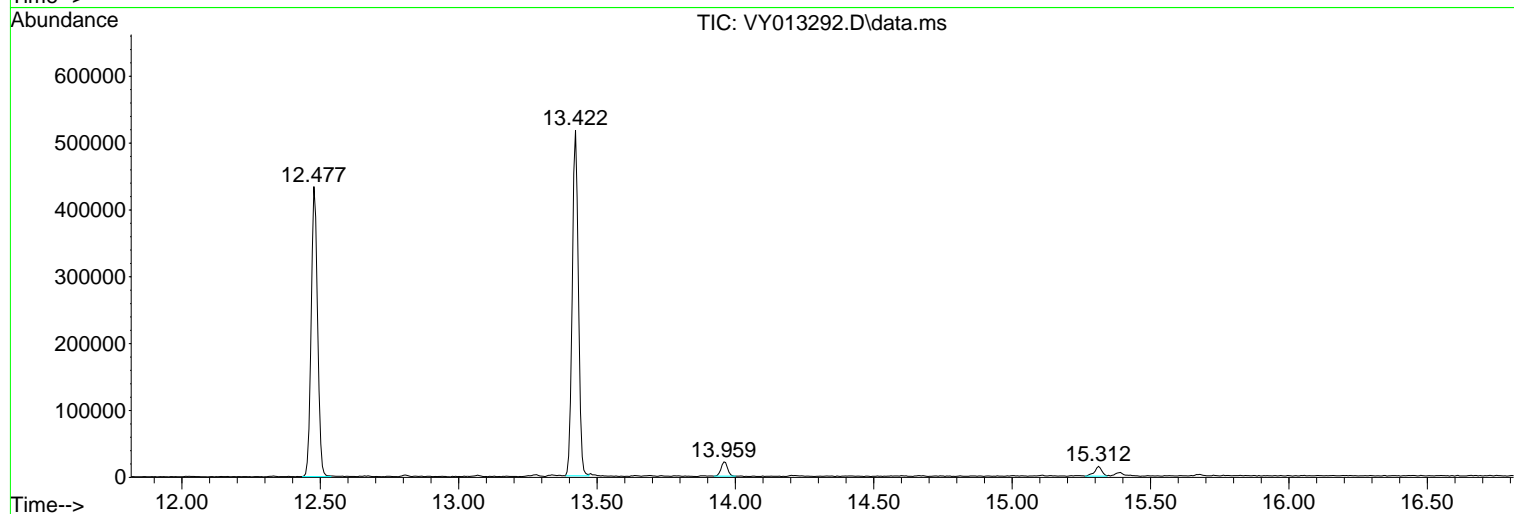
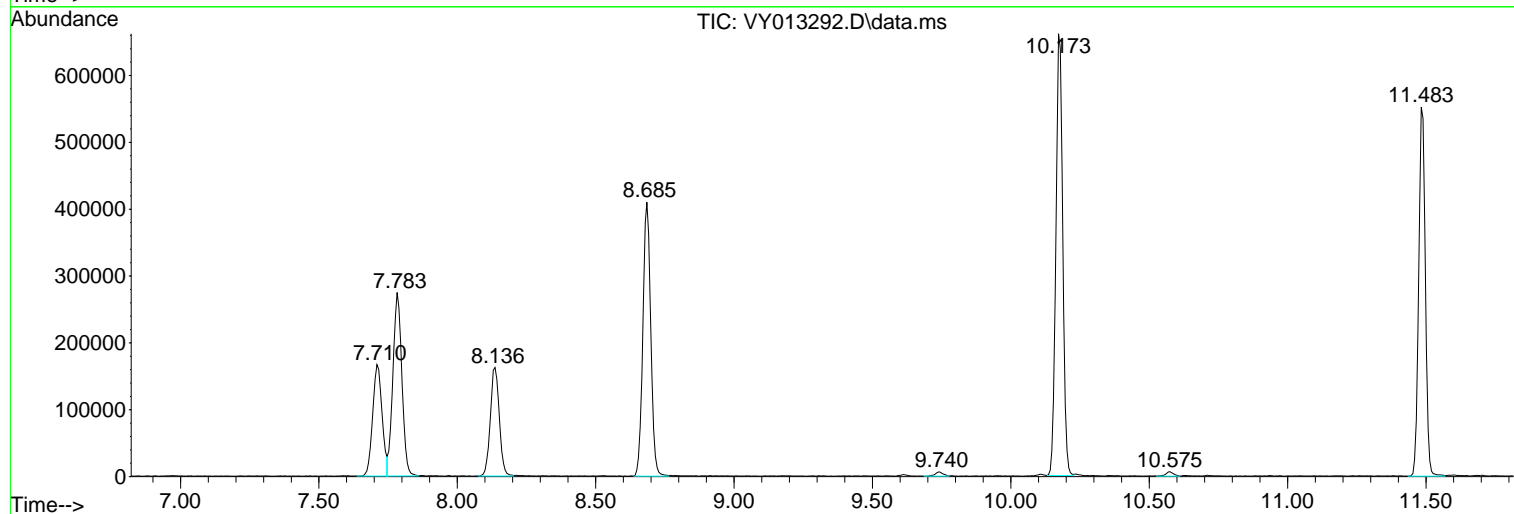
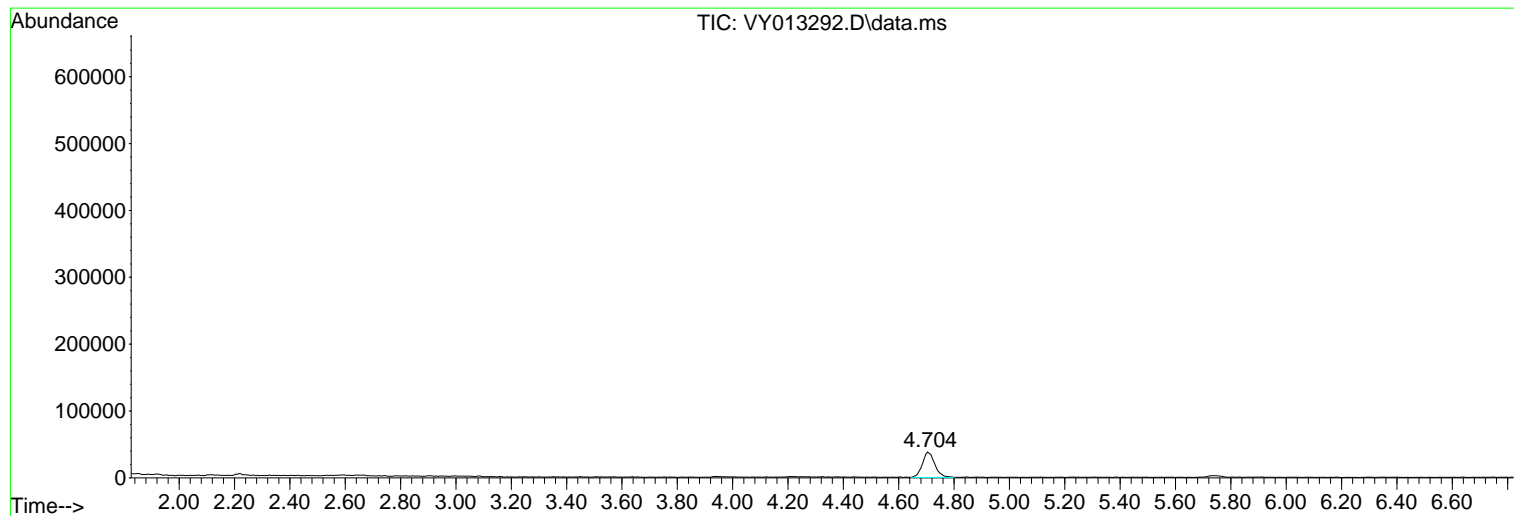
Sum of corrected areas: 5918625

Data Path : Z:\voasrv\HPCHEM1\MSVOA_Y\Data\VY041323\
Data File : VY013292.D
Acq On : 13 Apr 2023 13:44
Operator : KP/MD
Sample : 02256-01
Misc : 5.05g/5.0mL/MSVOA_Y/SOIL
ALS Vial : 12 Sample Multiplier: 1

Instrument :
MSVOA_Y
ClientSampleId :
360

Quant Method : Z:\voasrv\HPCHEM1\MSVOA_Y\methods\82Y041223S.M
Quant Title : SW846 8260

TIC Library : C:\Database\NIST20.L
TIC Integration Parameters: LSCINT.P



Library Search Compound Report

Data Path : Z:\voasrv\HPCHEM1\MSVOA_Y\Data\VY041323\
Data File : VY013292.D
Acq On : 13 Apr 2023 13:44
Operator : KP/MD
Sample : 02256-01
Misc : 5.05g/5.0mL/MSVOA_Y/SOIL
ALS Vial : 12 Sample Multiplier: 1

Instrument :
MSVOA_Y
ClientSampleId :
360

Quant Method : Z:\voasrv\HPCHEM1\MSVOA_Y\methods\82Y041223S.M
Quant Title : SW846 8260

TIC Library : C:\Database\NIST20.L
TIC Integration Parameters: LSCINT.P

No Library Search Compounds Detected

Data Path : Z:\voasrv\HPCHEM1\MSVOA_Y\Data\VY041323\
Data File : VY013292.D
Acq On : 13 Apr 2023 13:44
Operator : KP/MD
Sample : 02256-01
Misc : 5.05g/5.0mL/MSVOA_Y/SOIL
ALS Vial : 12 Sample Multiplier: 1

Instrument :
MSVOA_Y
ClientSampleId :
360

Quant Method : Z:\voasrv\HPCHEM1\MSVOA_Y\methods\82Y041223S.M
Quant Title : SW846 8260

TIC Library : C:\Database\NIST0.L
TIC Integration Parameters: LSCINT.P

TIC Top Hit name	RT	EstConc	Units	Response	--Internal Standard--			
					#	RT	Resp	Conc
