

Data Path : Z:\voasrv\HPCHEM1\MSVOA_Y\Data\VY041621\
 Data File : VY004462.D
 Acq On : 16 Apr 2021 12:15
 Operator : SY/MD
 Sample : M2051-01
 Misc : 4.84G/5ML/MSVOA_Y/SOIL
 ALS Vial : 6 Sample Multiplier: 1

Instrument :
 MSVOA_Y
 ClientSampleId :
 0124027

Integration Parameters: RTEINT.P

Integrator: RTE
 Smoothing : ON Filtering: 5
 Sampling : 1 Min Area: 3 % of largest Peak
 Start Thrs: 0.2 Max Peaks: 100
 Stop Thrs : 0 Peak Location: TOP

If leading or trailing edge < 100 prefer < Baseline drop else tangent >
 Peak separation: 5

Method : Z:\voasrv\HPCHEM1\MSVOA_Y\methods\82Y041221S.M
 Title : SW846 8260

Signal : TIC: VY004462.D\data.ms

peak #	R.T. min	first scan	max scan	last scan	PK TY	peak height	corr. area	corr. % max.	% of total
1	2.241	47	69	70	rBV5	11663	57911	4.59%	1.282%
2	4.728	468	477	489	rBV4	4969	14603	1.16%	0.323%
3	7.728	958	969	974	rBV	83950	198087	15.70%	4.385%
4	7.801	974	981	990	rVB	164579	372852	29.56%	8.254%
5	8.149	1028	1038	1050	rVB	84841	188340	14.93%	4.169%
6	8.697	1119	1128	1141	rBV	246115	483255	38.31%	10.698%
7	10.185	1365	1372	1380	rBV	393296	670643	53.17%	14.846%
8	11.496	1580	1587	1592	rBV	334864	543107	43.06%	12.023%
9	11.550	1592	1596	1601	rVB	128566	195225	15.48%	4.322%
10	11.703	1614	1621	1625	rBV4	7237	18386	1.46%	0.407%
11	12.002	1663	1670	1674	rBV7	6287	15423	1.22%	0.341%
12	12.495	1742	1751	1758	rBV2	709391	1261426	100.00%	27.924%
13	12.648	1771	1776	1783	rVB8	6978	14484	1.15%	0.321%
14	13.428	1898	1904	1911	rBV	287757	438422	34.76%	9.705%
15	13.965	1987	1992	2006	rVB2	25643	45228	3.59%	1.001%

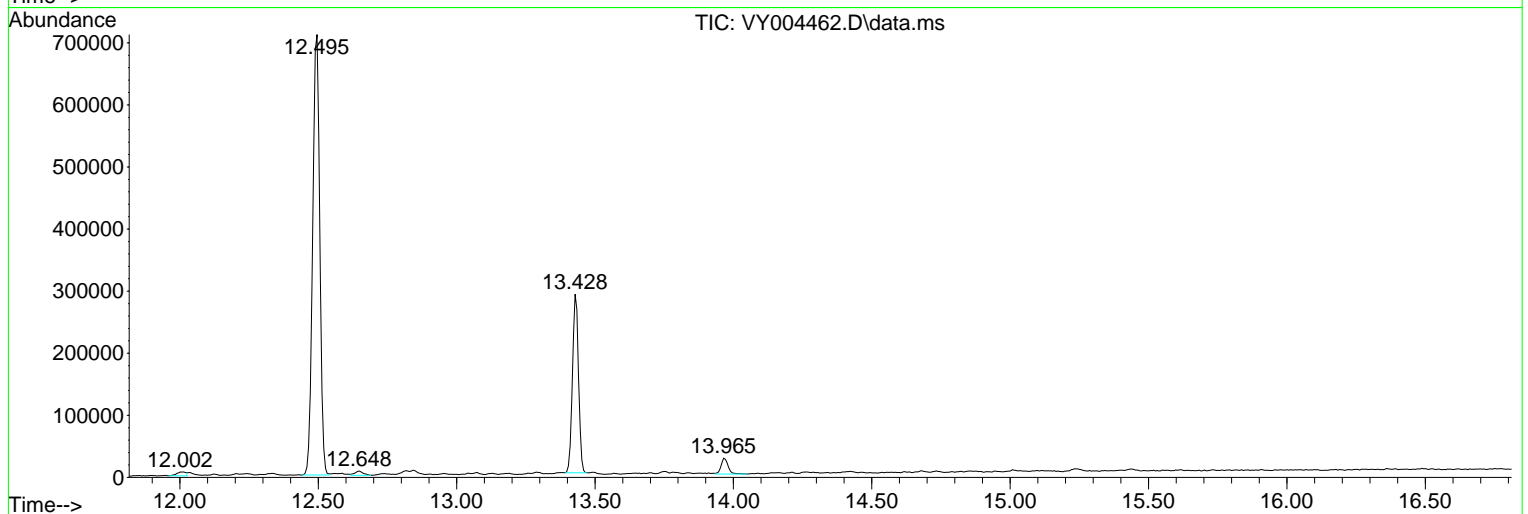
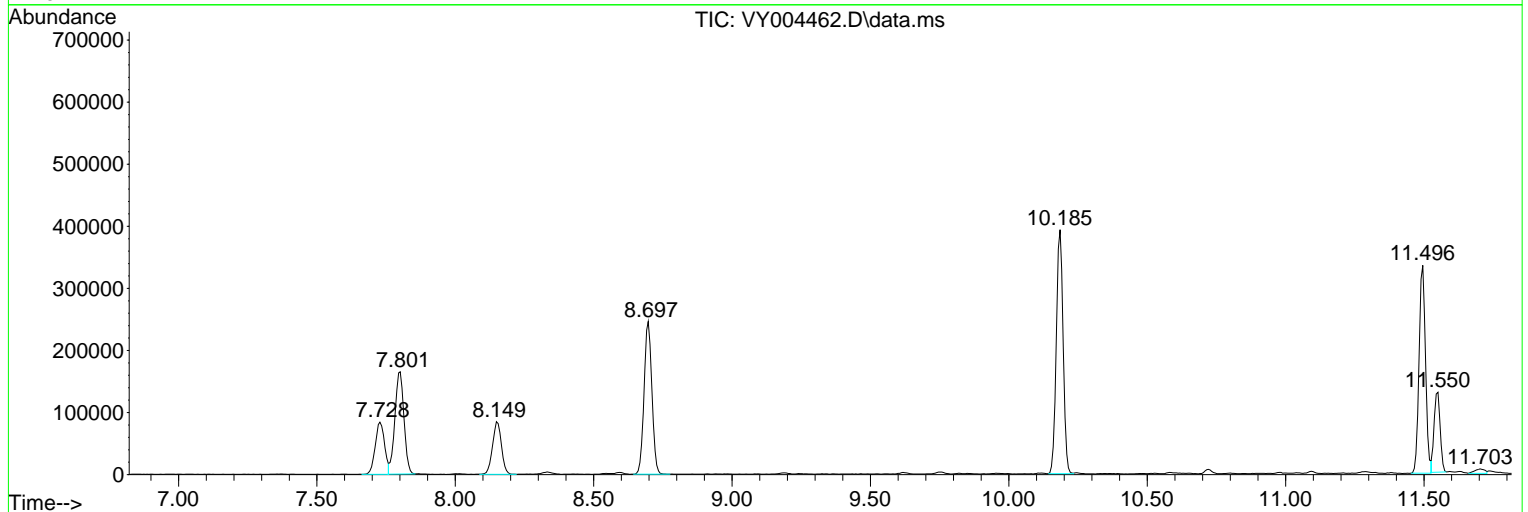
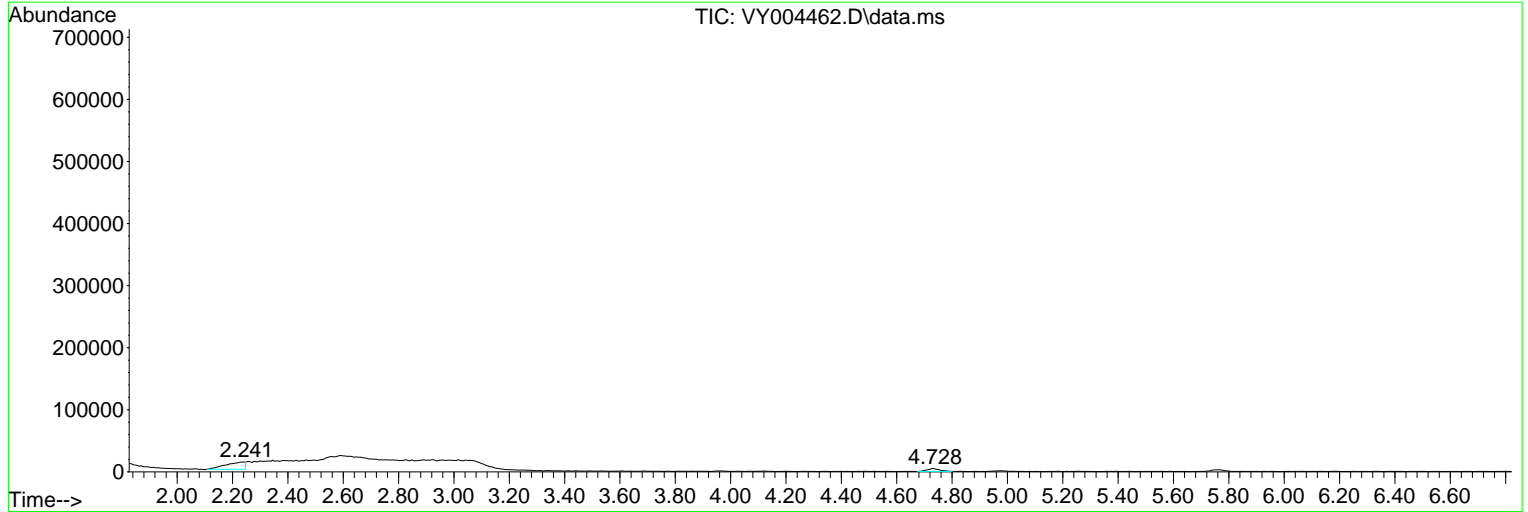
Sum of corrected areas: 4517392

Data Path : Z:\voasrv\HPCHEM1\MSVOA_Y\Data\VY041621\
 Data File : VY004462.D
 Acq On : 16 Apr 2021 12:15
 Operator : SY/MD
 Sample : M2051-01
 Misc : 4.84G/5ML/MSVOA_Y/SOIL
 ALS Vial : 6 Sample Multiplier: 1

Instrument :
 MSVOA_Y
 ClientSampleId :
 0124027

Quant Method : Z:\voasrv\HPCHEM1\MSVOA_Y\methods\82Y041221S.M
 Quant Title : SW846 8260

TIC Library : C:\DATABASE\NIST11.L
 TIC Integration Parameters: LSCINT.P



Data Path : Z:\voasrv\HPCHEM1\MSVOA_Y\Data\VY041621\
 Data File : VY004462.D
 Acq On : 16 Apr 2021 12:15
 Operator : SY/MD
 Sample : M2051-01
 Misc : 4.84G/5ML/MSVOA_Y/SOIL
 ALS Vial : 6 Sample Multiplier: 1

Instrument :
 MSVOA_Y
 ClientSampled :
 0124027

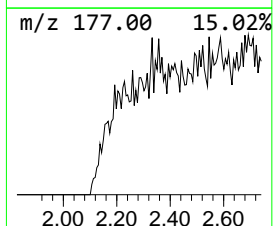
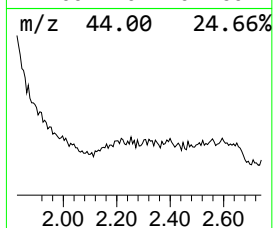
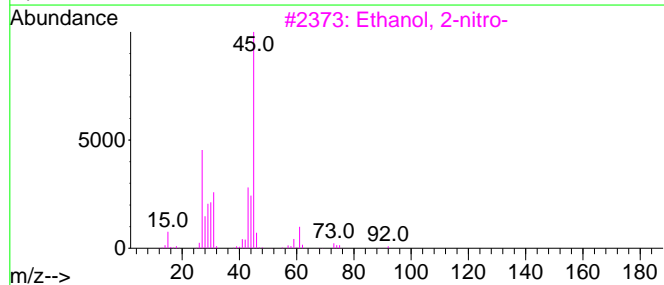
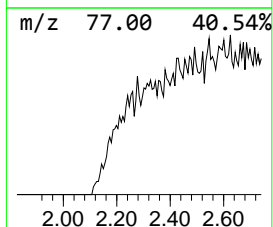
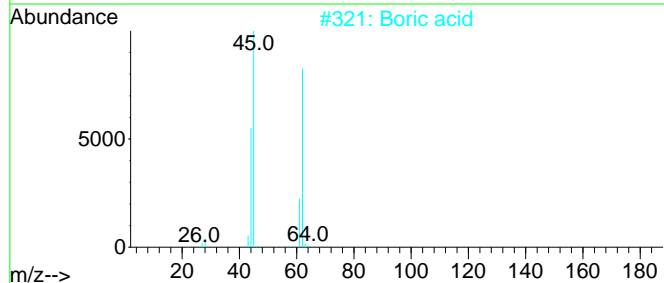
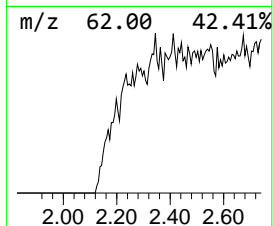
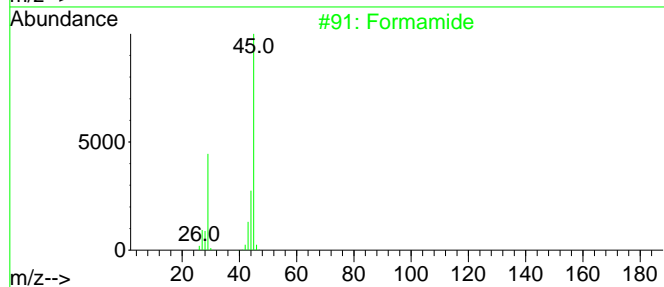
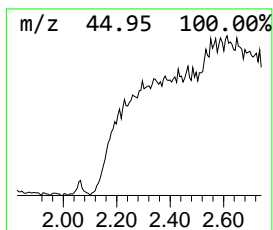
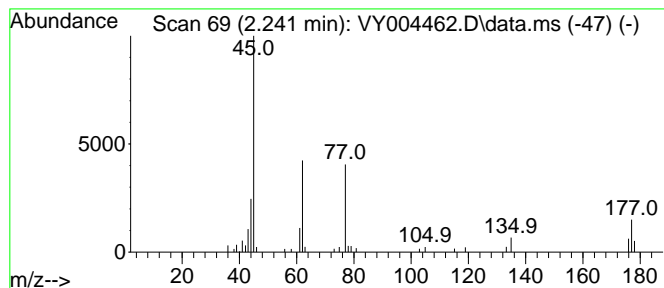
Quant Method : Z:\voasrv\HPCHEM1\MSVOA_Y\methods\82Y041221S.M
 Quant Title : SW846 8260

TIC Library : C:\DATABASE\NIST11.L
 TIC Integration Parameters: LSCINT.P

 Peak Number 1 unknown2.241 Concentration Rank 2

R.T.	EstConc	Area	Relative to ISTD	R.T.
2.241	7.77 ug/l	57911	Pentafluorobenzene	7.801

Hit#	of	5	Tentative ID	MW	MolForm	CAS#	Qual
1			Formamide	45	CH3NO	000075-12-7	10
2			Boric acid	62	BH3O3	010043-35-3	9
3			Ethanol, 2-nitro-	91	C2H5NO3	000625-48-9	9
4			2-Butanol, (R)-	74	C4H10O	014898-79-4	9
5			Carbamic acid, 1-methylethyl ester	103	C4H9NO2	001746-77-6	9



Data Path : Z:\voasrv\HPCHEM1\MSVOA_Y\Data\VY041621\
 Data File : VY004462.D
 Acq On : 16 Apr 2021 12:15
 Operator : SY/MD
 Sample : M2051-01
 Misc : 4.84G/5ML/MSVOA_Y/SOIL
 ALS Vial : 6 Sample Multiplier: 1

Instrument :
 MSVOA_Y
 ClientSampleId :
 0124027

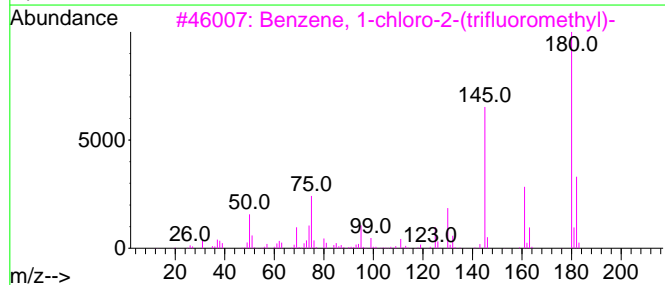
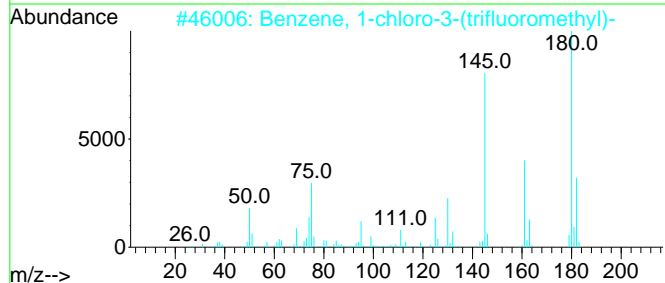
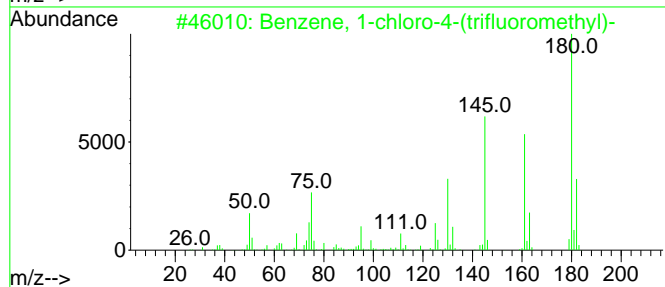
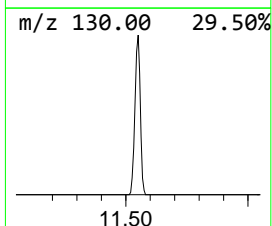
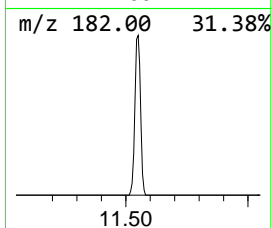
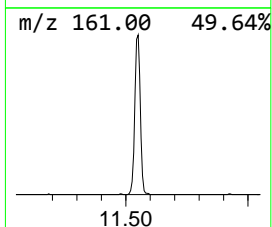
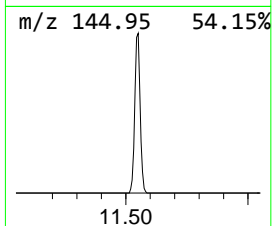
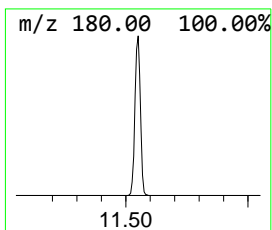
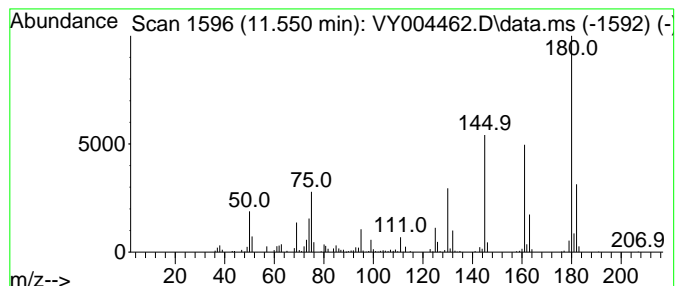
Quant Method : Z:\voasrv\HPCHEM1\MSVOA_Y\methods\82Y041221S.M
 Quant Title : SW846 8260

TIC Library : C:\DATABASE\NIST11.L
 TIC Integration Parameters: LSCINT.P

 Peak Number 2 Benzene, 1-chloro-4-(triflu... Concentration Rank 1

R.T.	EstConc	Area	Relative to ISTD	R.T.
11.550	17.97 ug/l	195225	Chlorobenzene-d5	11.496

Hit#	of	5	Tentative ID	MW	MolForm	CAS#	Qual
1			Benzene, 1-chloro-4-(trifluorome...	180	C7H4ClF3	000098-56-6	99
2			Benzene, 1-chloro-3-(trifluorome...	180	C7H4ClF3	000098-15-7	96
3			Benzene, 1-chloro-2-(trifluorome...	180	C7H4ClF3	000088-16-4	94
4			Benzene, 1,3,5-trichloro-	180	C6H3Cl3	000108-70-3	25
5			3-Chloroquinoxaline 1-oxide	180	C8H5ClN2O	005227-59-8	17



Data Path : Z:\voasrv\HPCHEM1\MSVOA_Y\Data\VY041621\
 Data File : VY004462.D
 Acq On : 16 Apr 2021 12:15
 Operator : SY/MD
 Sample : M2051-01
 Misc : 4.84G/5ML/MSVOA_Y/SOIL
 ALS Vial : 6 Sample Multiplier: 1

Instrument :
 MSVOA_Y
 ClientSampleId :
 0124027

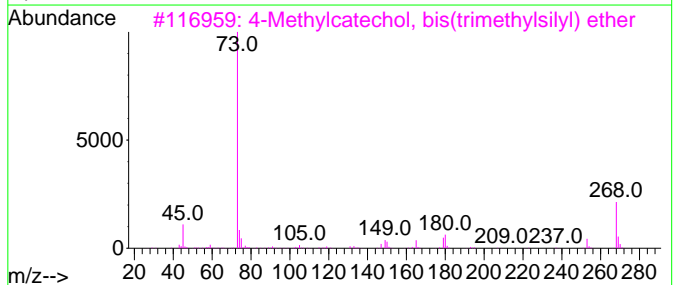
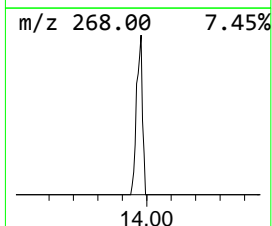
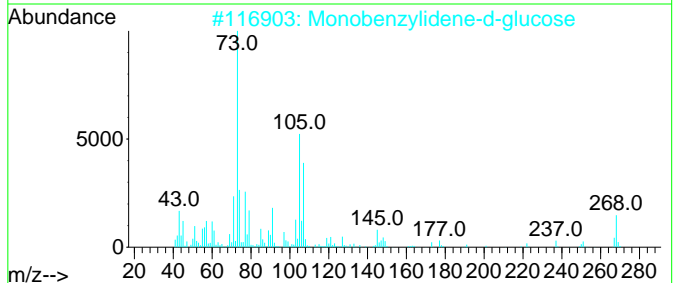
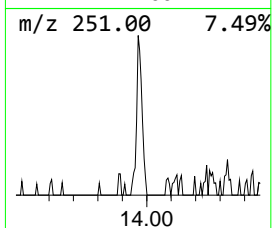
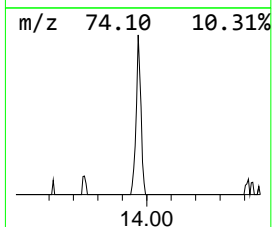
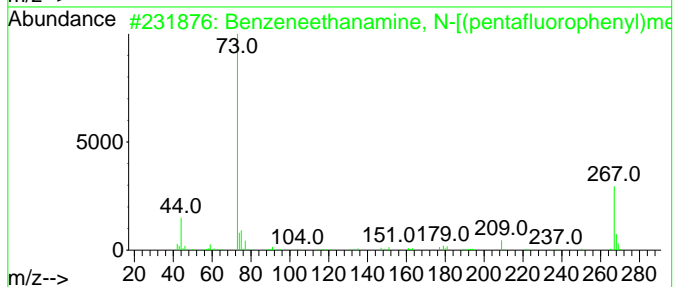
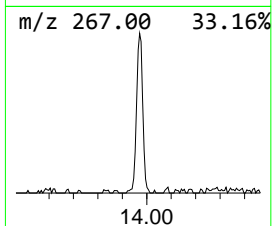
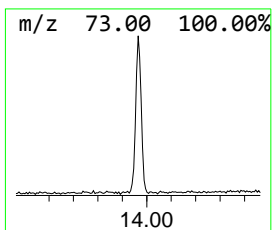
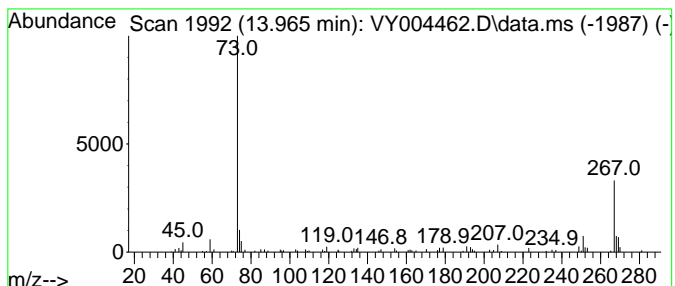
Quant Method : Z:\voasrv\HPCHEM1\MSVOA_Y\methods\82Y041221S.M
 Quant Title : SW846 8260

TIC Library : C:\DATABASE\NIST11.L
 TIC Integration Parameters: LSCINT.P

 Peak Number 3 unknown13.965 Concentration Rank 3

R.T.	EstConc	Area	Relative to ISTD	R.T.
13.965	5.16 ug/l	45228	1,4-Dichlorobenzene-d4	13.428

Hit#	of	5	Tentative ID	MW	MolForm	CAS#	Qual
1			Benzeneethanamine, N-[(pentafluoro...]	475	C21H26F5NO2Si2	055429-85-1	42
2			Monobenzylidene-d-glucose	268	C13H16O6	1000127-04-3	16
3			4-Methylcatechol, bis(trimethylsilyl) ether	268	C13H24O2Si2	1000332-79-9	9
4			11H-Dibenzo[b,e][1,4]diazepin-11...	267	C16H17N3O	013450-73-2	9
5			Benzoic acid, 2-[(trimethylsilyl)me...	282	C13H22O3Si2	003789-85-3	9



Data Path : Z:\voasrv\HPCHEM1\MSVOA_Y\Data\VY041621\
Data File : VY004462.D
Acq On : 16 Apr 2021 12:15
Operator : SY/MD
Sample : M2051-01
Misc : 4.84G/5ML/MSVOA_Y/SOIL
ALS Vial : 6 Sample Multiplier: 1

Instrument :
MSVOA_Y
ClientSampleId :
0124027

Quant Method : Z:\voasrv\HPCHEM1\MSVOA_Y\methods\82Y041221S.M
Quant Title : SW846 8260

TIC Library : C:\DATABASE\NIST11.L
TIC Integration Parameters: LSCINT.P

TIC Top Hit name	RT	EstConc	Units	Response	--Internal Standard--			
					#	RT	Resp	Conc
unknown2.241	2.241	7.8	ug/l	57911	1	7.801	372852	50.0
Benzene, 1-chlo...	11.550	18.0	ug/l	195225	3	11.496	543107	50.0
unknown13.965	13.965	5.2	ug/l	45228	4	13.428	438422	50.0