

Data Path : Z:\voasrv\HPCHEM1\MSVOA_Y\Data\VY041824\
 Data File : VY017983.D
 Acq On : 18 Apr 2024 18:02
 Operator : SY/MD
 Sample : P2178-03
 Misc : 3.66g/5.0mL/MSVOA_Y/SOIL/A
 ALS Vial : 22 Sample Multiplier: 1

Instrument :
 MSVOA_Y
 ClientSampleId :
 TOPSOIL-LKWD-DENALI-5

Quant Time: Apr 19 02:04:04 2024
 Quant Method : Z:\voasrv\HPCHEM1\MSVOA_Y\methods\82Y041624S.M
 Quant Title : SW846 8260
 QLast Update : Wed Apr 17 06:24:42 2024
 Response via : Initial Calibration

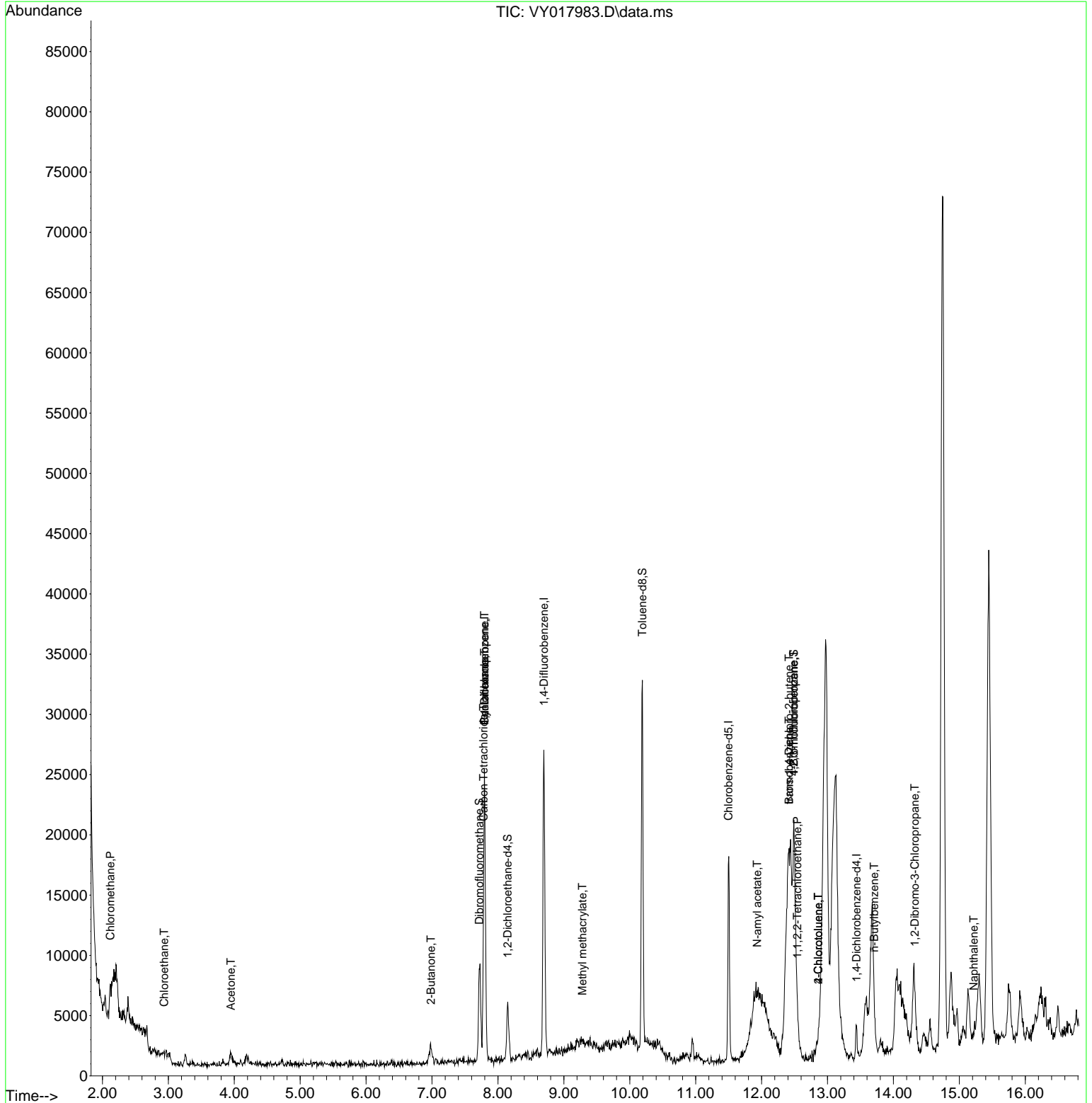
Compound	R.T.	QIon	Response	Conc	Units	Dev(Min)
Internal Standards						
1) Pentafluorobenzene	7.795	168	18949	50.00	ug/l	0.00
34) 1,4-Difluorobenzene	8.697	114	23047	50.00	ug/l	0.00
63) Chlorobenzene-d5	11.495	117	10206	50.00	ug/l	0.00
72) 1,4-Dichlorobenzene-d4	13.440	152	1011	50.00	ug/l	0.01
System Monitoring Compounds						
33) 1,2-Dichloroethane-d4	8.149	65	3841	23.42	ug/l	0.00
Spiked Amount	50.000	Range 50 - 163	Recovery =	46.84%#		
35) Dibromofluoromethane	7.716	113	6387	44.92	ug/l	0.00
Spiked Amount	50.000	Range 54 - 147	Recovery =	89.84%		
50) Toluene-d8	10.191	98	22119	41.00	ug/l	0.01
Spiked Amount	50.000	Range 58 - 134	Recovery =	82.00%		
62) 4-Bromofluorobenzene	12.489	95	1845	11.04	ug/l	0.00
Spiked Amount	50.000	Range 30 - 143	Recovery =	22.08%#		
Target Compounds						
						Qvalue
3) Chloromethane	2.119	50	304	1.22	ug/l #	43
6) Chloroethane	2.936	64	386	2.18	ug/l #	42
16) Acetone	3.948	43	1950	60.18	ug/l #	86
25) 2-Butanone	6.984	43	96	2.02	ug/l #	41
31) Cyclohexane	7.795	56	343	1.09	ug/l #	1
36) 1,1-Dichloropropene	7.795	75	1325	6.41	ug/l #	42
38) Carbon Tetrachloride	7.783	117	1675	8.02	ug/l #	13
48) Methyl methacrylate	9.282	41	78	1.07	ug/l #	31
74) N-amyl acetate	11.934	43	19	1.28	ug/l #	1
75) 1,1,2,2-Tetrachloroethane	12.544	83	19	1.38	ug/l #	26
76) 1,2,3-Trichloropropane	12.489	75	1430	150.73	ug/l #	100
77) Bromobenzene	12.416	156	13342	748.40	ug/l #	1
79) 2-Chlorotoluene	12.861	91	68	1.36	ug/l	87
81) trans-1,4-Dichloro-2-b...	12.416	75	681	148.00	ug/l #	21
82) 4-Chlorotoluene	12.861	91	68	1.31	ug/l	87
89) n-Butylbenzene	13.709	91	72	1.16	ug/l #	33
92) 1,2-Dibromo-3-Chloropr...	14.324	75	136	76.96	ug/l #	1
95) Naphthalene	15.220	128	179	6.11	ug/l #	69

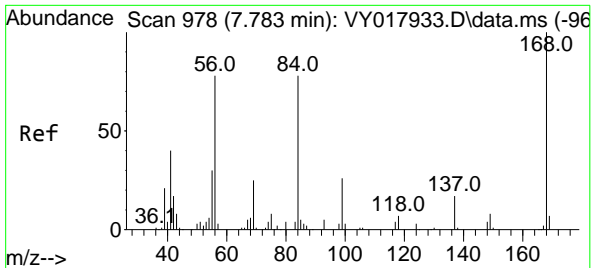
(#) = qualifier out of range (m) = manual integration (+) = signals summed

Data Path : Z:\voasrv\HPCHEM1\MSVOA_Y\Data\VY041824\
 Data File : VY017983.D
 Acq On : 18 Apr 2024 18:02
 Operator : SY/MD
 Sample : P2178-03
 Misc : 3.66g/5.0mL/MSVOA_Y/SOIL/A
 ALS Vial : 22 Sample Multiplier: 1

Instrument :
 MSVOA_Y
 ClientSampleId :
 TOPSOIL-LKWD-DENALI-5

Quant Time: Apr 19 02:04:04 2024
 Quant Method : Z:\voasrv\HPCHEM1\MSVOA_Y\methods\82Y041624S.M
 Quant Title : SW846 8260
 QLast Update : Wed Apr 17 06:24:42 2024
 Response via : Initial Calibration

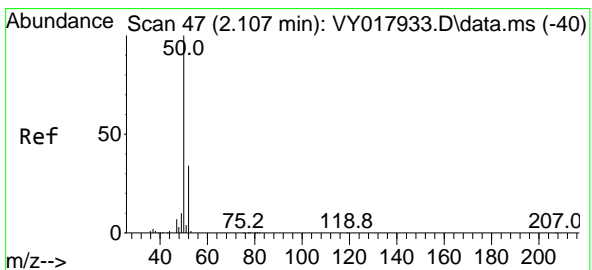
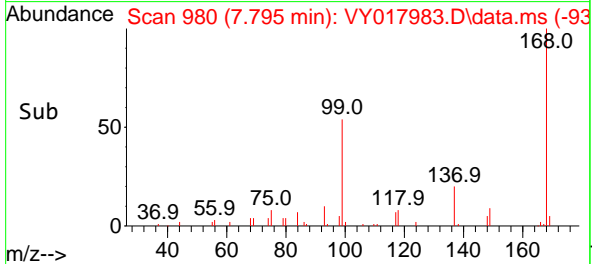
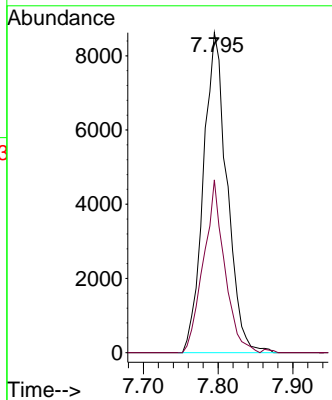
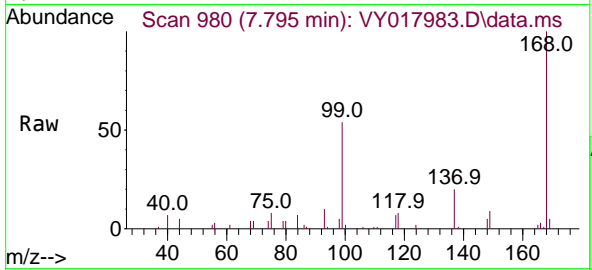




#1
 Pentafluorobenzene
 Concen: 50.00 ug/l
 RT: 7.795 min Scan# 99
 Delta R.T. 0.006 min
 Lab File: VY017983.D
 Acq: 18 Apr 2024 18:02

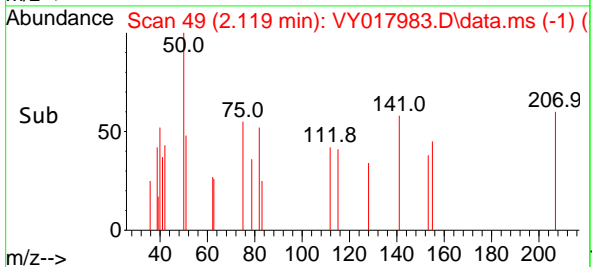
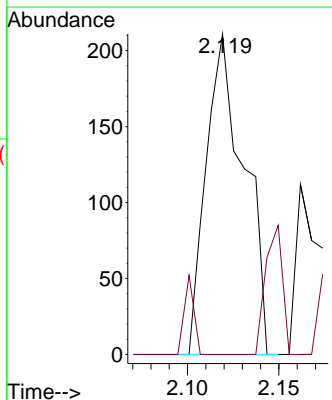
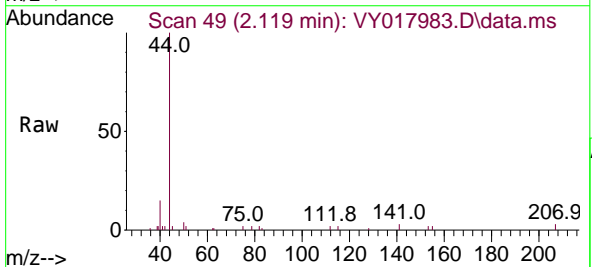
Instrument : MSVOA_Y
 ClientSampleId : TOPSOIL-LKWD-DENALI-5

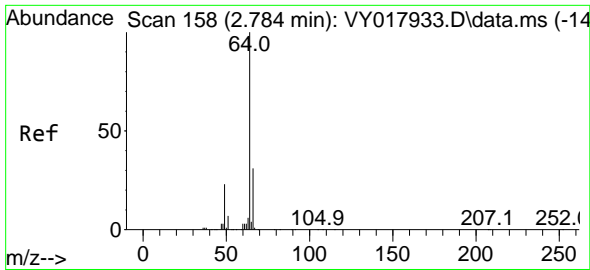
Tgt Ion:168 Resp: 18949
 Ion Ratio Lower Upper
 168 100
 99 54.0 39.1 58.7



#3
 Chloromethane
 Concen: 1.22 ug/l
 RT: 2.119 min Scan# 49
 Delta R.T. 0.006 min
 Lab File: VY017983.D
 Acq: 18 Apr 2024 18:02

Tgt Ion: 50 Resp: 304
 Ion Ratio Lower Upper
 50 100
 52 0.0 25.6 38.4#

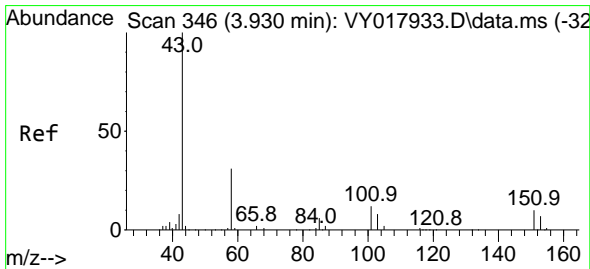
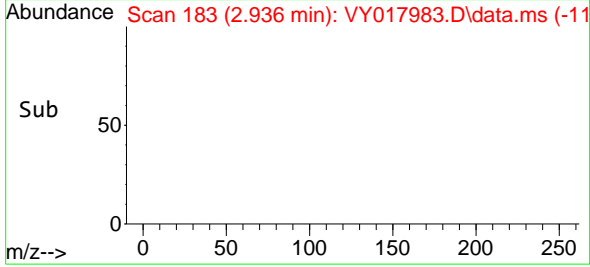
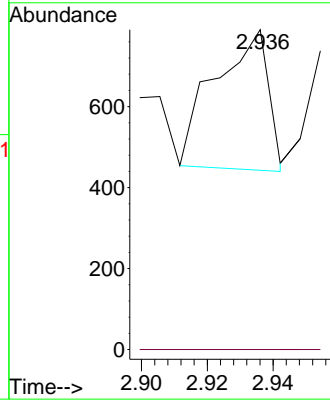
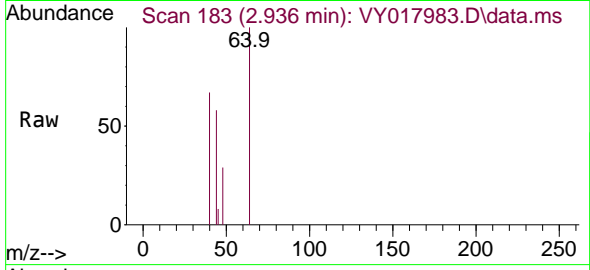




#6
 Chloroethane
 Concen: 2.18 ug/l
 RT: 2.936 min Scan# 11
 Delta R.T. 0.146 min
 Lab File: VY017983.D
 Acq: 18 Apr 2024 18:02

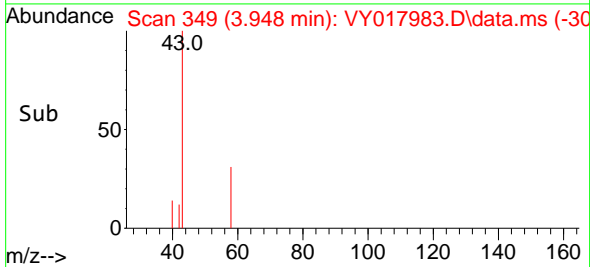
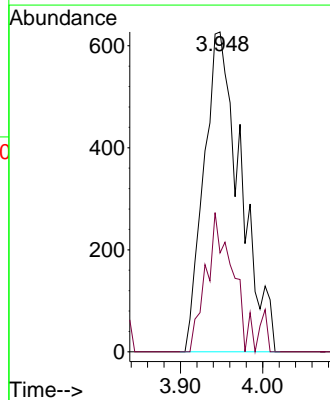
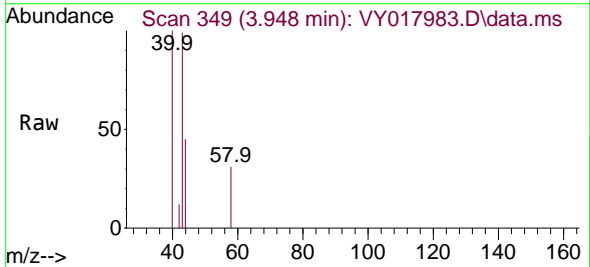
Instrument : MSVOA_Y
 ClientSampleId : TOPSOIL-LKWD-DENALI-5

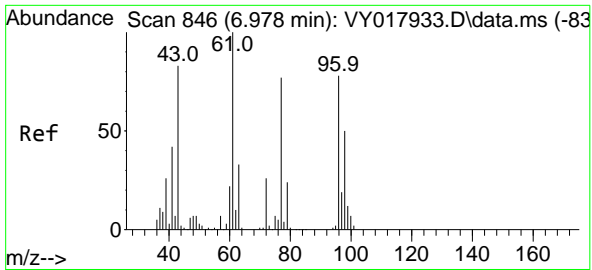
Tgt Ion: 64 Resp: 386
 Ion Ratio Lower Upper
 64 100
 66 0.0 26.1 39.1#



#16
 Acetone
 Concen: 60.18 ug/l
 RT: 3.948 min Scan# 349
 Delta R.T. 0.000 min
 Lab File: VY017983.D
 Acq: 18 Apr 2024 18:02

Tgt Ion: 43 Resp: 1950
 Ion Ratio Lower Upper
 43 100
 58 30.9 31.7 47.5#

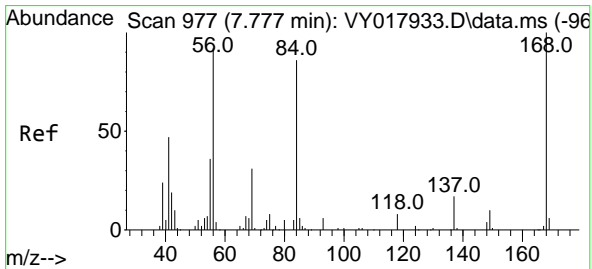
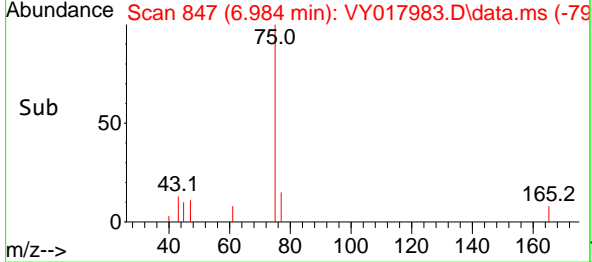
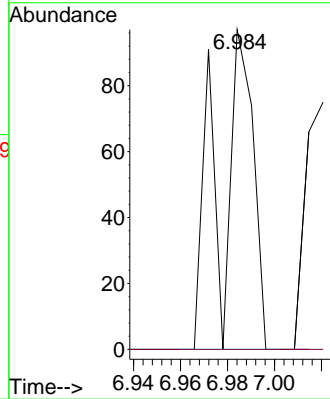
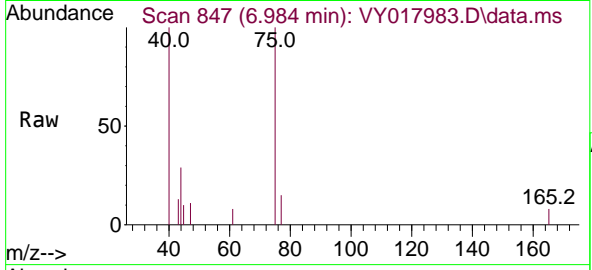




#25
 2-Butanone
 Concen: 2.02 ug/l
 RT: 6.984 min Scan# 84
 Delta R.T. 0.000 min
 Lab File: VY017983.D
 Acq: 18 Apr 2024 18:02

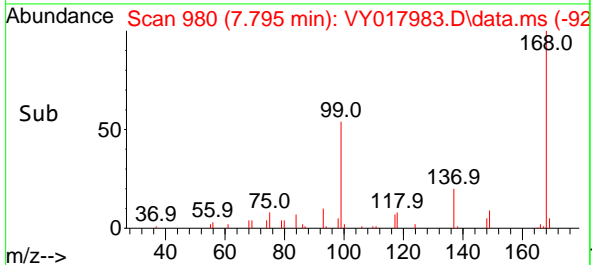
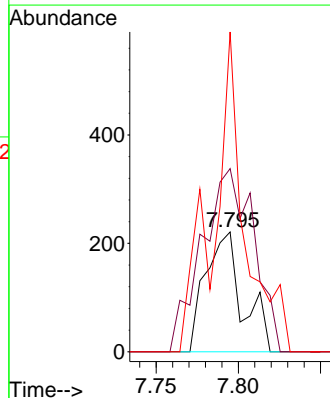
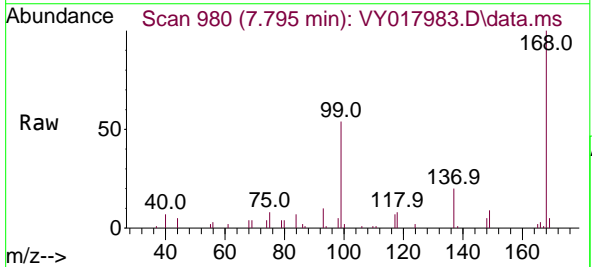
Instrument : MSVOA_Y
 ClientSampleId : TOPSOIL-LKWD-DENALI-5

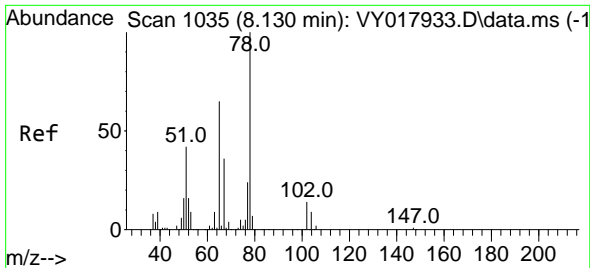
Tgt Ion: 43 Resp: 96
 Ion Ratio Lower Upper
 43 100
 72 0.0 27.3 40.9#



#31
 Cyclohexane
 Concen: 1.09 ug/l
 RT: 7.795 min Scan# 980
 Delta R.T. 0.012 min
 Lab File: VY017983.D
 Acq: 18 Apr 2024 18:02

Tgt Ion: 56 Resp: 343
 Ion Ratio Lower Upper
 56 100
 69 152.9 28.7 43.1#
 84 267.0 77.7 116.5#

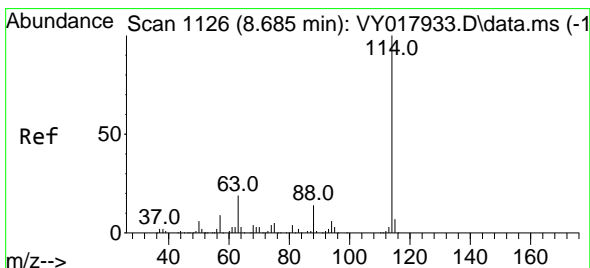
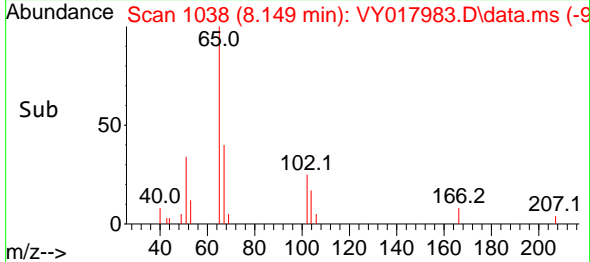
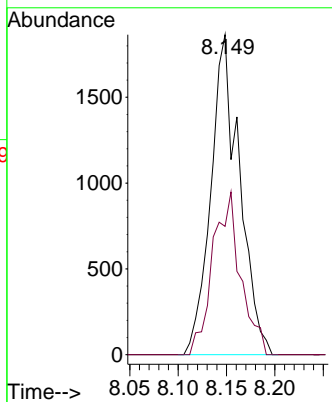
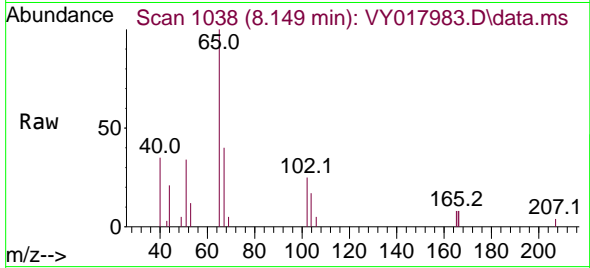




#33
 1,2-Dichloroethane-d4
 Concen: 23.42 ug/l
 RT: 8.149 min Scan# 1038
 Delta R.T. 0.006 min
 Lab File: VY017983.D
 Acq: 18 Apr 2024 18:02

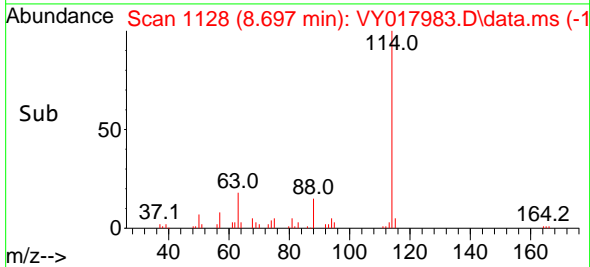
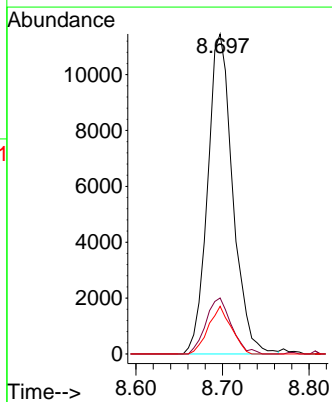
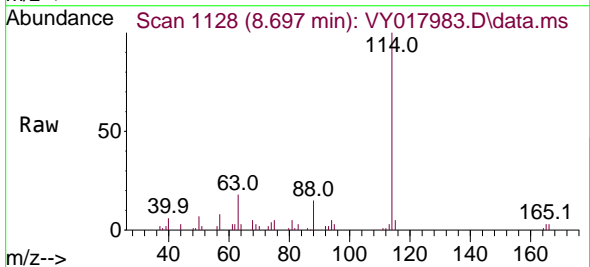
Instrument : MSVOA_Y
 ClientSampleId : TOPSOIL-LKWD-DENALI-5

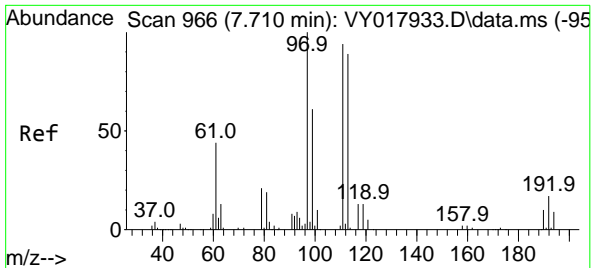
Tgt Ion: 65 Resp: 3841
 Ion Ratio Lower Upper
 65 100
 67 49.2 0.0 109.6



#34
 1,4-Difluorobenzene
 Concen: 50.00 ug/l
 RT: 8.697 min Scan# 1128
 Delta R.T. 0.006 min
 Lab File: VY017983.D
 Acq: 18 Apr 2024 18:02

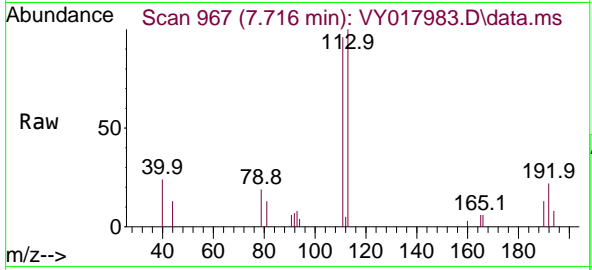
Tgt Ion:114 Resp: 23047
 Ion Ratio Lower Upper
 114 100
 63 17.5 0.0 35.0
 88 14.9 0.0 27.2





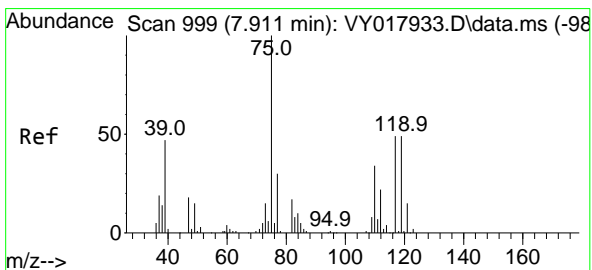
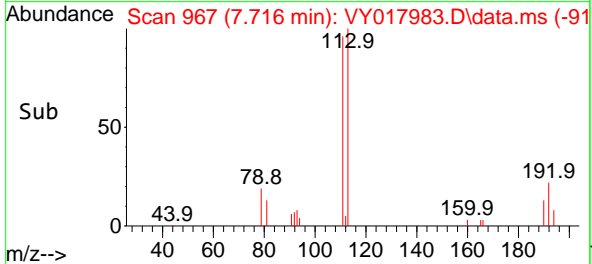
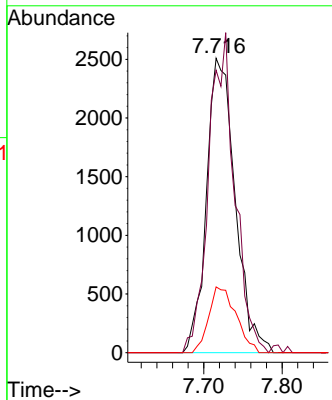
#35
 Dibromofluoromethane
 Concen: 44.92 ug/l
 RT: 7.716 min Scan# 90
 Delta R.T. -0.006 min
 Lab File: VY017983.D
 Acq: 18 Apr 2024 18:02

Instrument : MSVOA_Y
 ClientSampleId : TOPSOIL-LKWD-DENALI-5



Tgt Ion:113 Resp: 6387

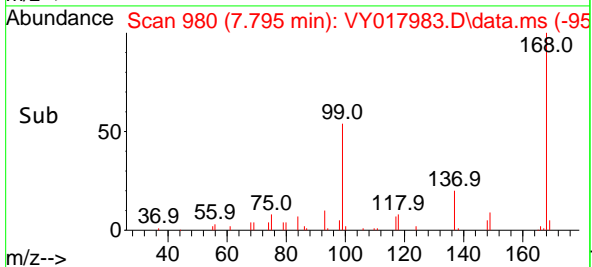
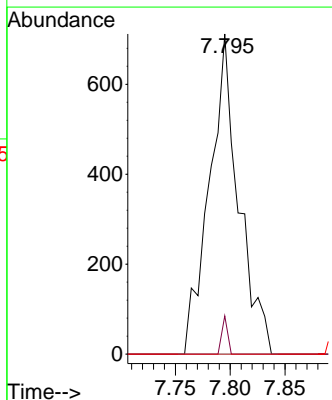
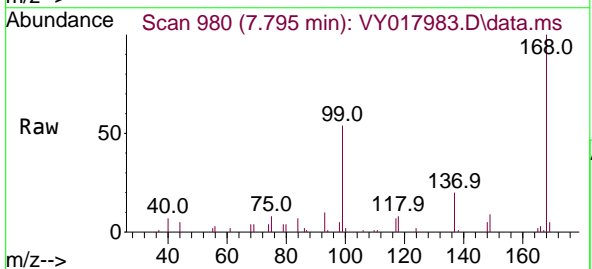
Ion	Ratio	Lower	Upper
113	100		
111	98.6	82.2	123.4
192	21.2	15.9	23.9

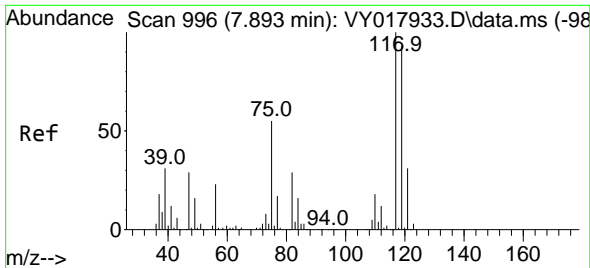


#36
 1,1-Dichloropropene
 Concen: 6.41 ug/l
 RT: 7.795 min Scan# 980
 Delta R.T. -0.122 min
 Lab File: VY017983.D
 Acq: 18 Apr 2024 18:02

Tgt Ion: 75 Resp: 1325

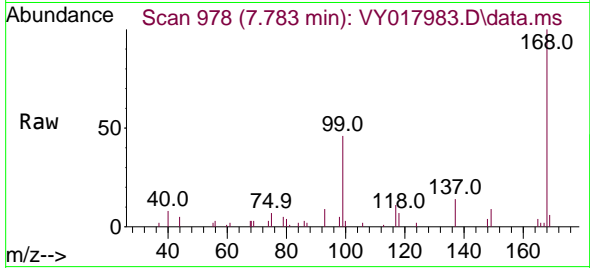
Ion	Ratio	Lower	Upper
75	100		
110	2.3	19.0	57.0#
77	0.0	25.3	37.9#





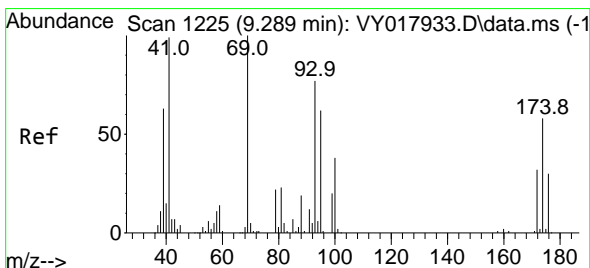
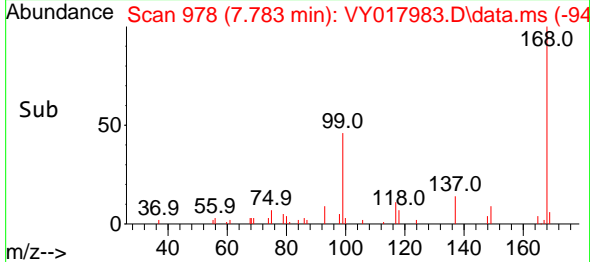
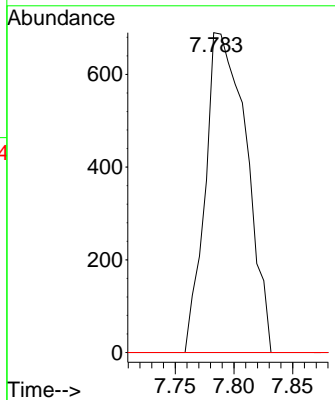
#38
 Carbon Tetrachloride
 Concen: 8.02 ug/l
 RT: 7.783 min Scan# 91
 Delta R.T. -0.122 min
 Lab File: VY017983.D
 Acq: 18 Apr 2024 18:02

Instrument : MSVOA_Y
 ClientSampleId : TOPSOIL-LKWD-DENALI-5



Tgt Ion: 117 Resp: 1675

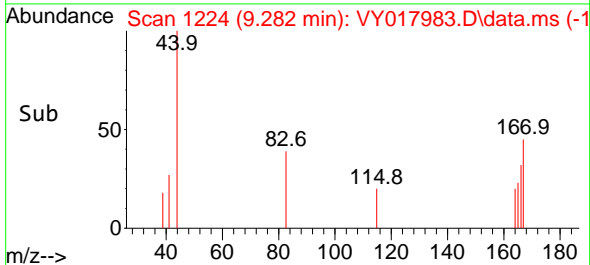
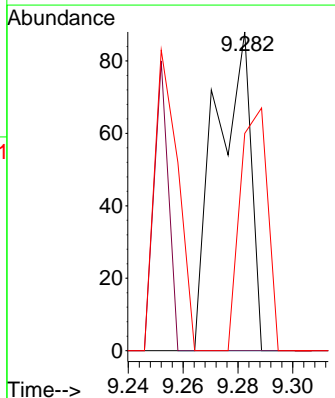
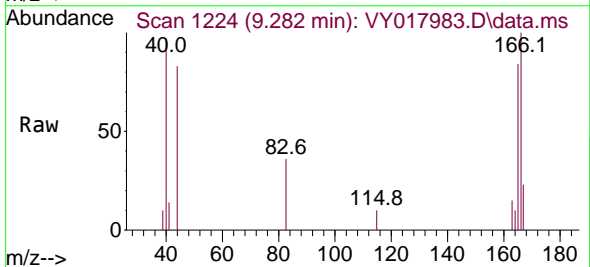
Ion	Ratio	Lower	Upper
117	100		
119	0.0	75.8	113.6#
121	0.0	24.0	36.0#

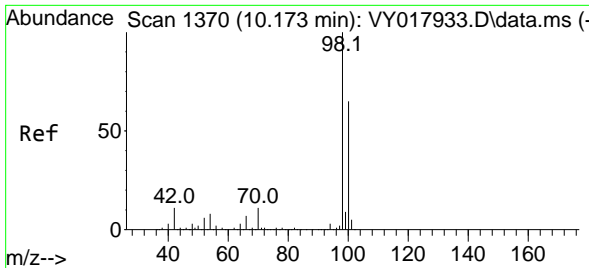


#48
 Methyl methacrylate
 Concen: 1.07 ug/l
 RT: 9.282 min Scan# 1224
 Delta R.T. -0.012 min
 Lab File: VY017983.D
 Acq: 18 Apr 2024 18:02

Tgt Ion: 41 Resp: 78

Ion	Ratio	Lower	Upper
41	100		
69	0.0	84.1	126.1#
39	59.0	43.6	65.4

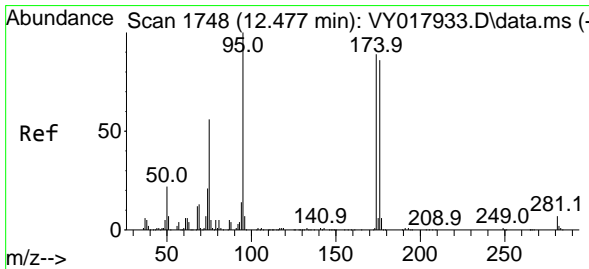
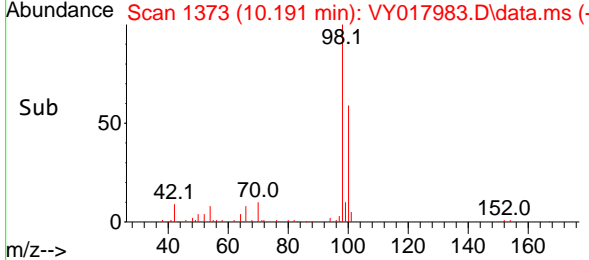
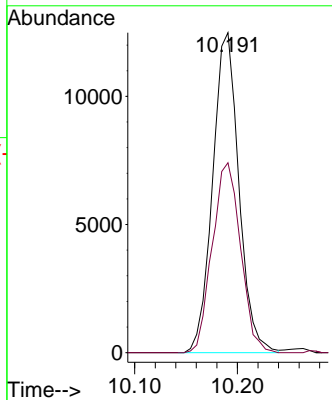
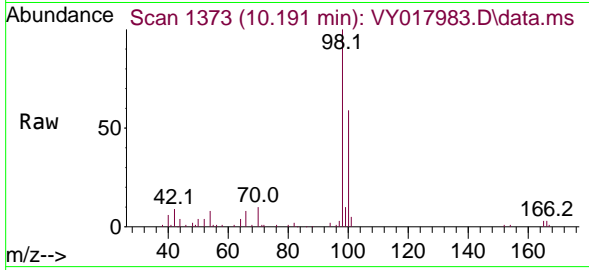




#50
 Toluene-d8
 Concen: 41.00 ug/l
 RT: 10.191 min Scan# 11
 Delta R.T. 0.012 min
 Lab File: VY017983.D
 Acq: 18 Apr 2024 18:02

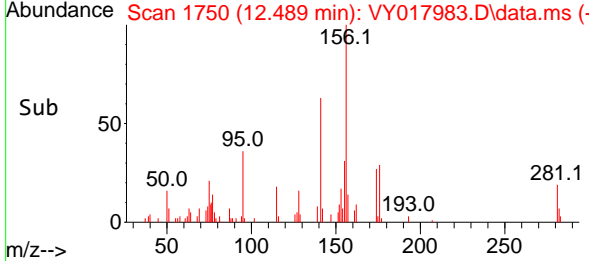
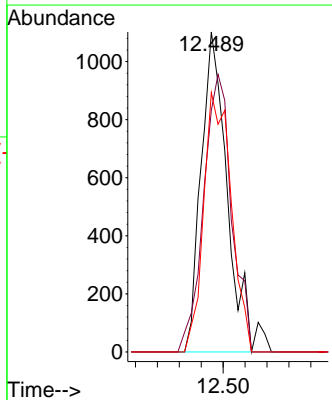
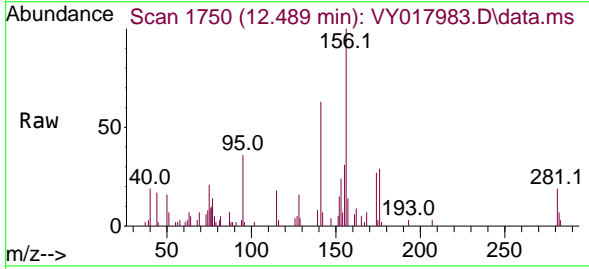
Instrument : MSVOA_Y
 ClientSampleId : TOPSOIL-LKWD-DENALI-5

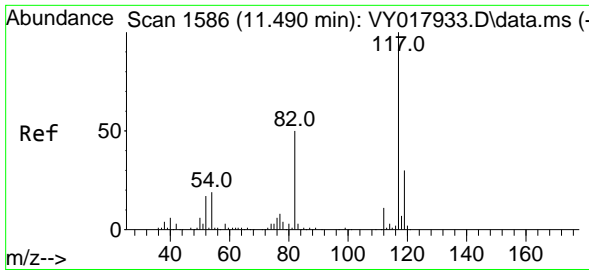
Tgt Ion: 98 Resp: 22119
 Ion Ratio Lower Upper
 98 100
 100 64.0 52.0 78.0



#62
 4-Bromofluorobenzene
 Concen: 11.04 ug/l
 RT: 12.489 min Scan# 1750
 Delta R.T. 0.006 min
 Lab File: VY017983.D
 Acq: 18 Apr 2024 18:02

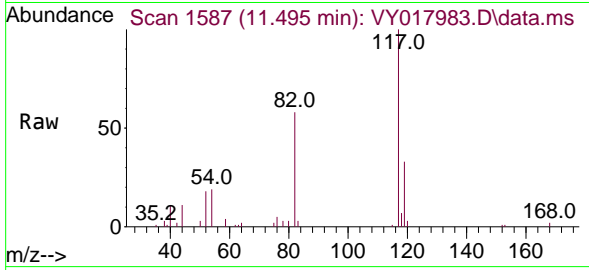
Tgt Ion: 95 Resp: 1845
 Ion Ratio Lower Upper
 95 100
 174 92.6 0.0 175.6
 176 84.6 0.0 171.4





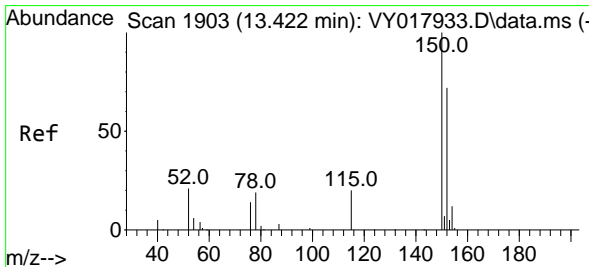
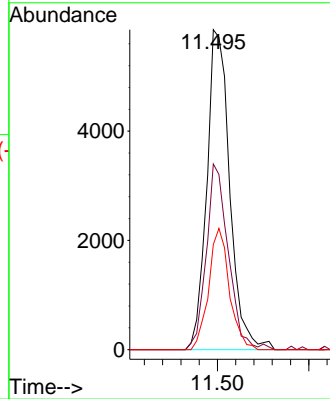
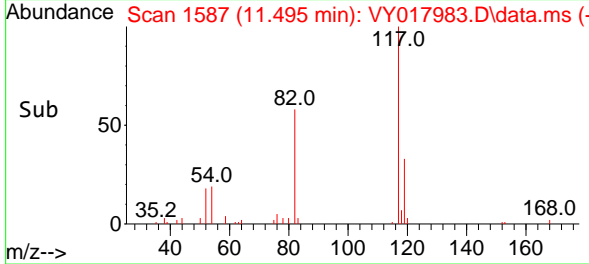
#63
 Chlorobenzene-d5
 Concen: 50.00 ug/l
 RT: 11.495 min Scan# 11
 Delta R.T. 0.006 min
 Lab File: VY017983.D
 Acq: 18 Apr 2024 18:02

Instrument :
 MSVOA_Y
 ClientSampleId :
 TOPSOIL-LKWD-DENALI-5

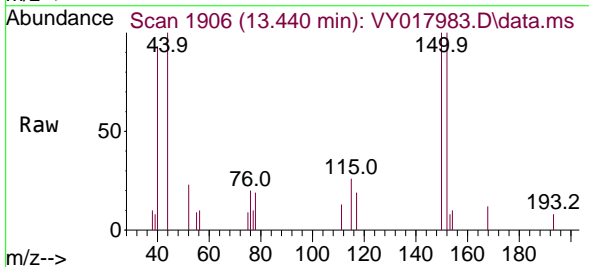


Tgt Ion:117 Resp: 10206

Ion	Ratio	Lower	Upper
117	100		
82	58.1	42.4	63.6
119	32.9	25.9	38.9

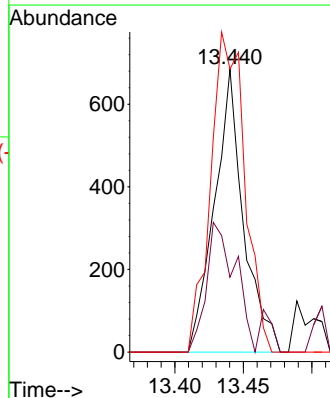
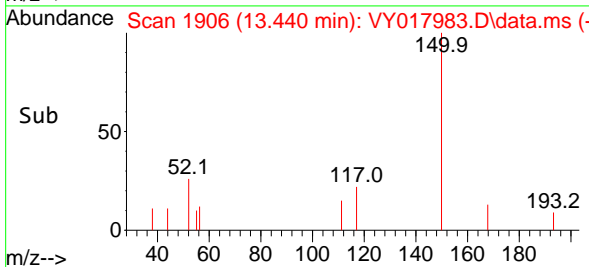


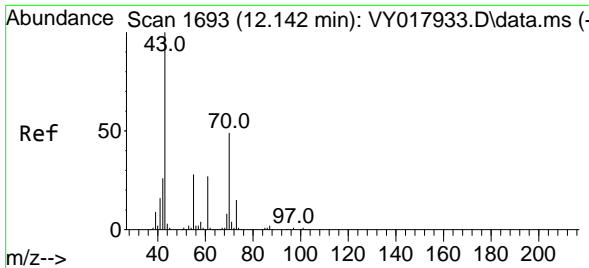
#72
 1,4-Dichlorobenzene-d4
 Concen: 50.00 ug/l
 RT: 13.440 min Scan# 1906
 Delta R.T. 0.012 min
 Lab File: VY017983.D
 Acq: 18 Apr 2024 18:02



Tgt Ion:152 Resp: 1011

Ion	Ratio	Lower	Upper
152	100		
115	45.8	28.2	84.7
150	132.5	0.0	345.6



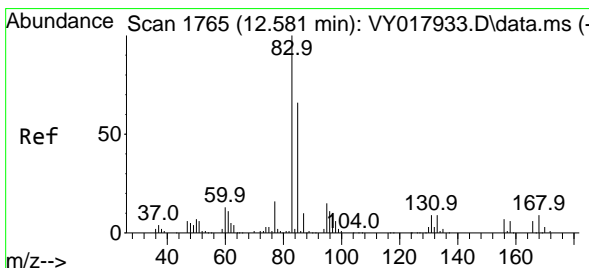
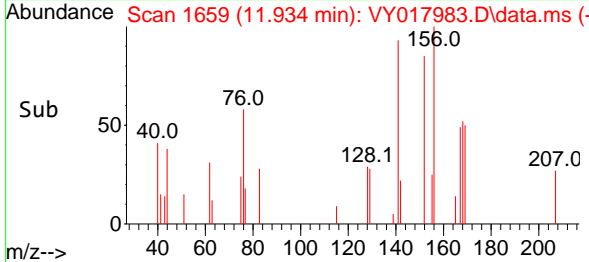
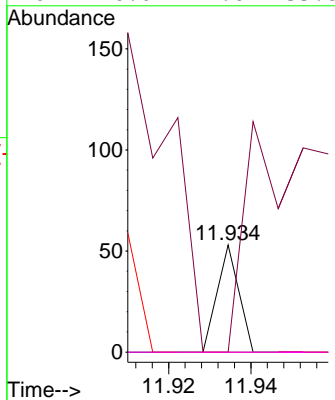
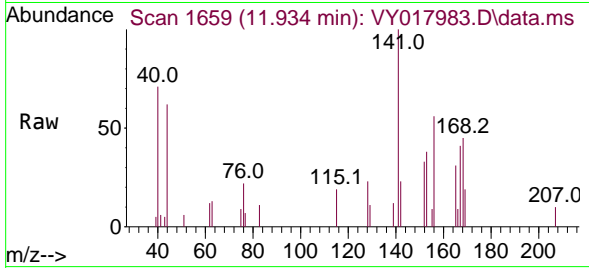


#74
 N-amy1 acetate
 Concen: 1.28 ug/l
 RT: 11.934 min Scan# 11
 Delta R.T. -0.207 min
 Lab File: VY017983.D
 Acq: 18 Apr 2024 18:02

Instrument : MSVOA_Y
 ClientSampleId : TOPSOIL-LKWD-DENALI-5

Tgt Ion: 43 Resp: 19

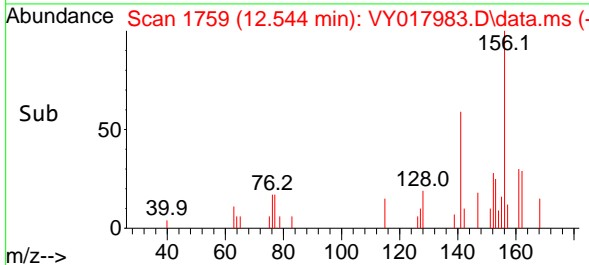
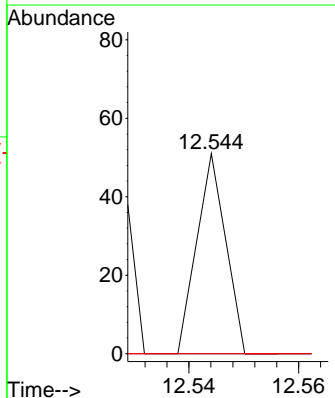
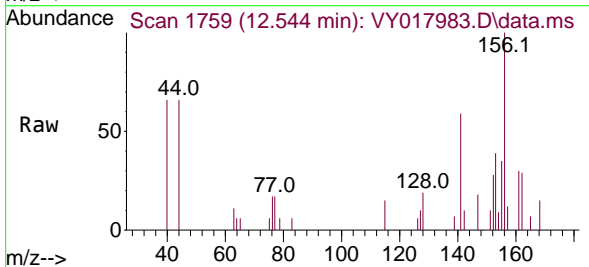
Ion	Ratio	Lower	Upper
43	100		
70	1226.3	41.4	62.2#
55	0.0	23.3	34.9#
61	0.0	22.6	33.8#

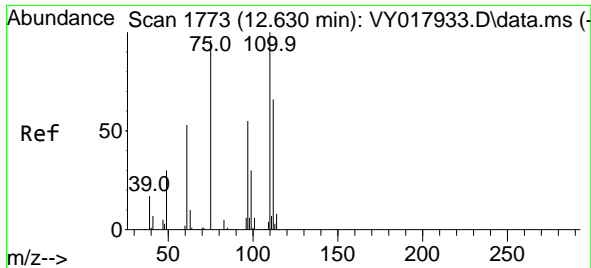


#75
 1,1,2,2-Tetrachloroethane
 Concen: 1.38 ug/l
 RT: 12.544 min Scan# 1759
 Delta R.T. -0.037 min
 Lab File: VY017983.D
 Acq: 18 Apr 2024 18:02

Tgt Ion: 83 Resp: 19

Ion	Ratio	Lower	Upper
83	100		
131	0.0	5.0	14.9#
85	0.0	32.0	96.0#

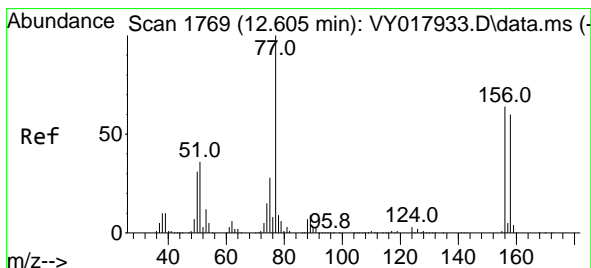
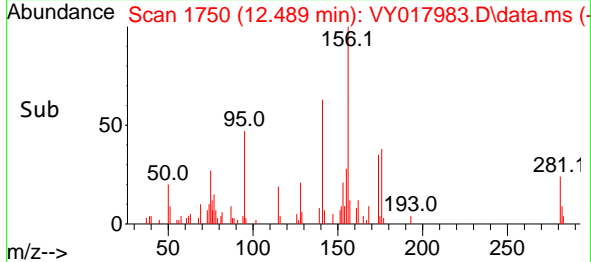
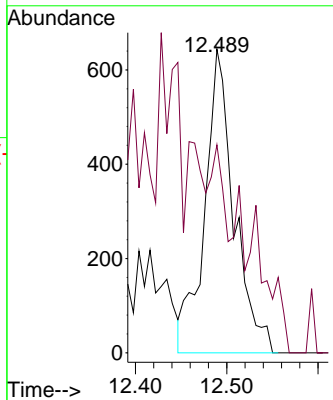
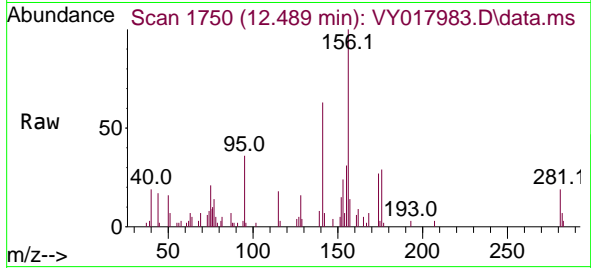




#76
 1,2,3-Trichloropropane
 Concen: 150.73 ug/l
 RT: 12.489 min Scan# 1738
 Delta R.T. -0.146 min
 Lab File: VY017983.D
 Acq: 18 Apr 2024 18:02

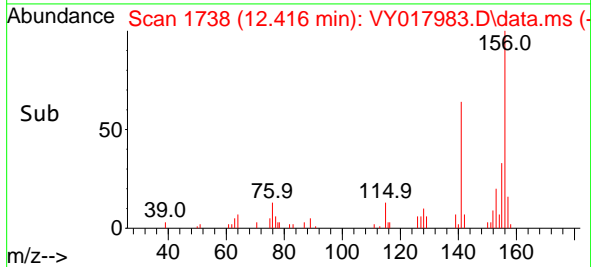
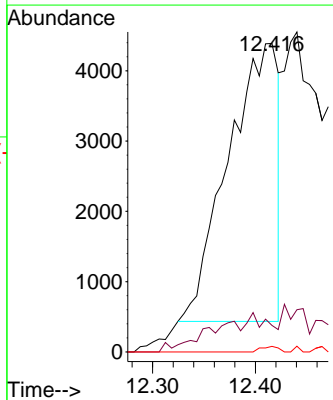
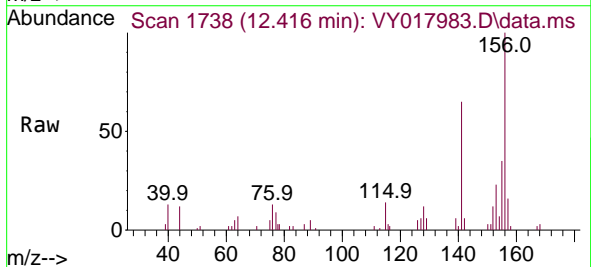
Instrument : MSVOA_Y
 ClientSampleId : TOPSOIL-LKWD-DENALI-5

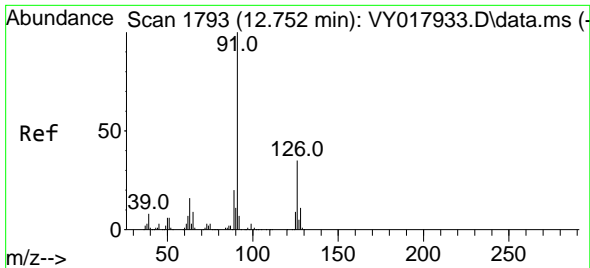
Tgt Ion: 75 Resp: 1430
 Ion Ratio Lower Upper
 75 100
 77 0.0 0.0 0.0



#77
 Bromobenzene
 Concen: 748.40 ug/l
 RT: 12.416 min Scan# 1738
 Delta R.T. -0.195 min
 Lab File: VY017983.D
 Acq: 18 Apr 2024 18:02

Tgt Ion: 156 Resp: 13342
 Ion Ratio Lower Upper
 156 100
 77 3.9 87.1 261.3#
 158 0.7 48.6 145.9#

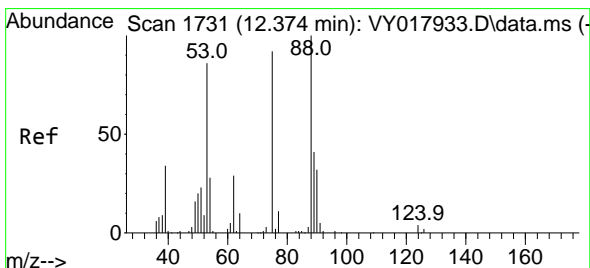
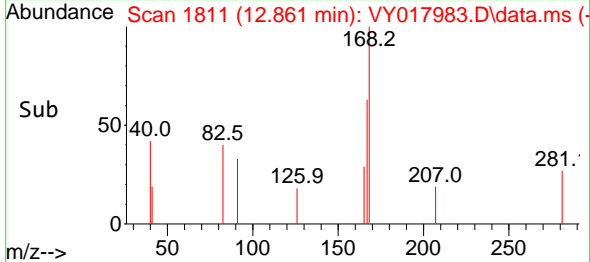
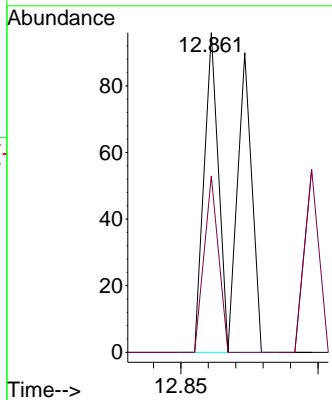
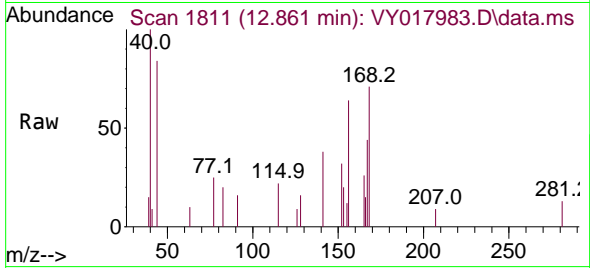




#79
 2-Chlorotoluene
 Concen: 1.36 ug/l
 RT: 12.861 min Scan# 1811
 Delta R.T. 0.104 min
 Lab File: VY017983.D
 Acq: 18 Apr 2024 18:02

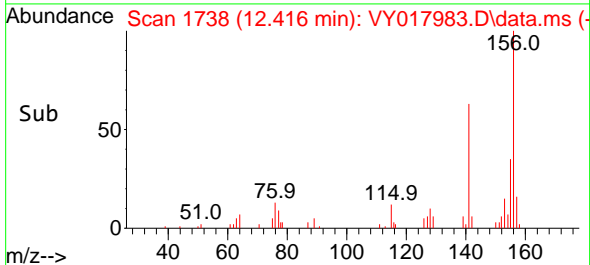
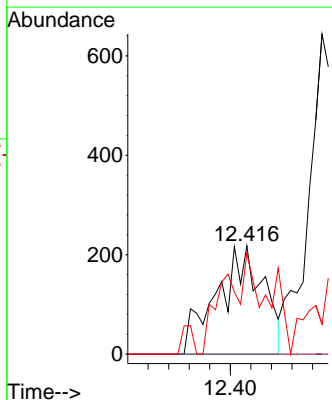
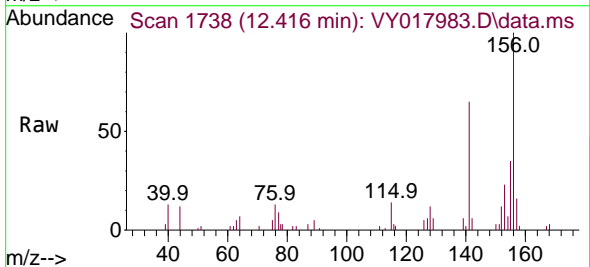
Instrument : MSVOA_Y
 ClientSampleId : TOPSOIL-LKWD-DENALI-5

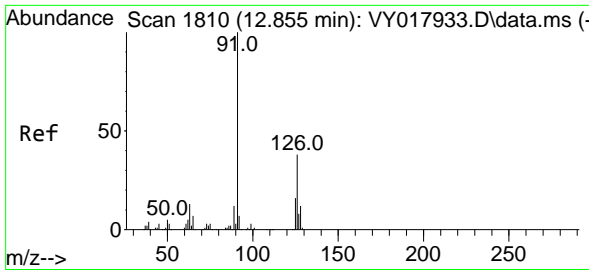
Tgt Ion: 91 Resp: 68
 Ion Ratio Lower Upper
 91 100
 126 27.9 17.8 53.5



#81
 trans-1,4-Dichloro-2-butene
 Concen: 148.00 ug/l
 RT: 12.416 min Scan# 1738
 Delta R.T. 0.037 min
 Lab File: VY017983.D
 Acq: 18 Apr 2024 18:02

Tgt Ion: 75 Resp: 681
 Ion Ratio Lower Upper
 75 100
 53 0.0 66.8 100.2#
 89 10.3 35.8 53.6#

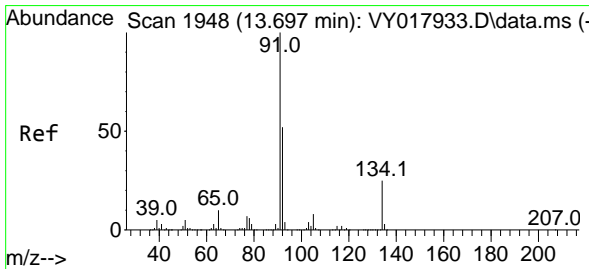
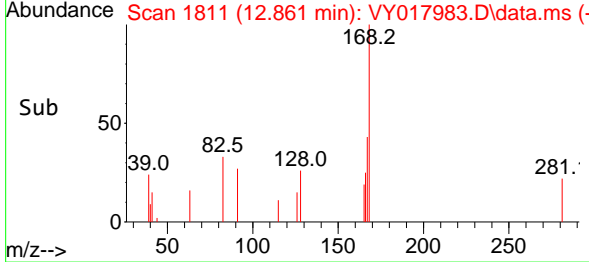
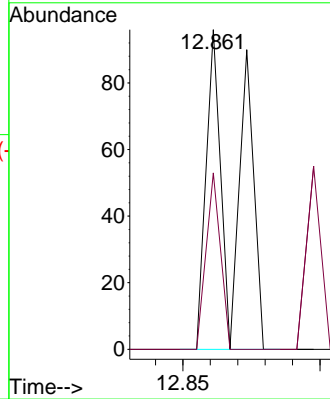
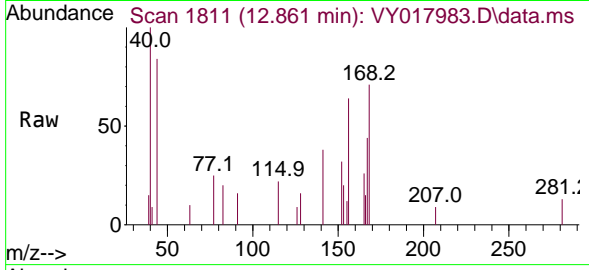




#82
 4-Chlorotoluene
 Concen: 1.31 ug/l
 RT: 12.861 min Scan# 11
 Delta R.T. 0.006 min
 Lab File: VY017983.D
 Acq: 18 Apr 2024 18:02

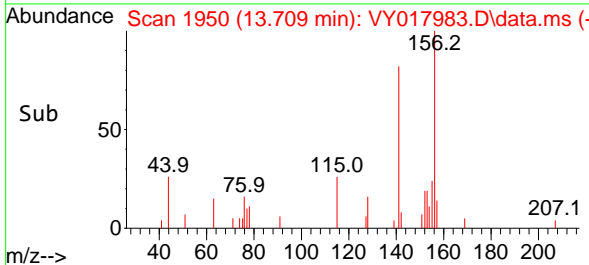
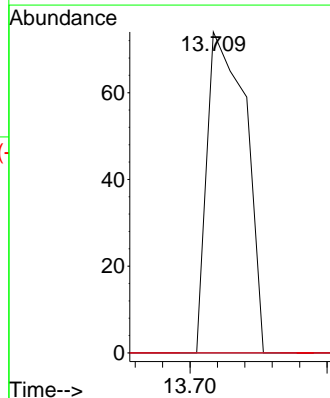
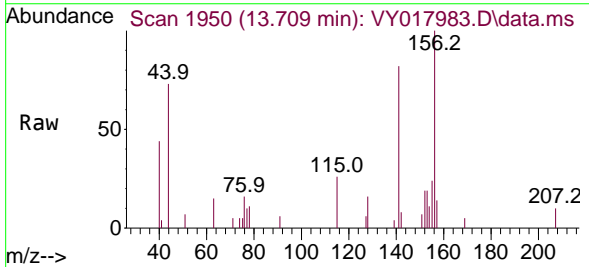
Instrument :
 MSVOA_Y
 ClientSampleId :
 TOPSOIL-LKWD-DENALI-5

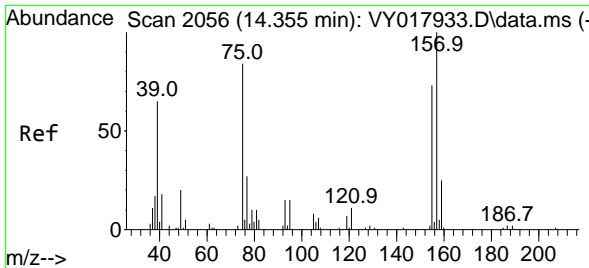
Tgt Ion: 91 Resp: 68
 Ion Ratio Lower Upper
 91 100
 126 27.9 17.6 52.9



#89
 n-Butylbenzene
 Concen: 1.16 ug/l
 RT: 13.709 min Scan# 1950
 Delta R.T. 0.012 min
 Lab File: VY017983.D
 Acq: 18 Apr 2024 18:02

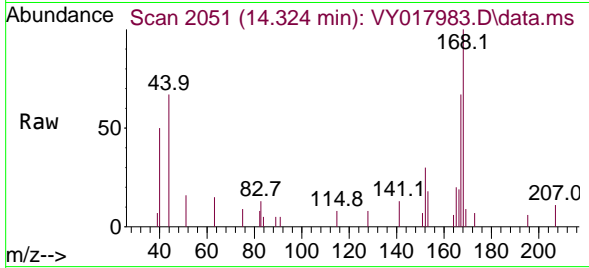
Tgt Ion: 91 Resp: 72
 Ion Ratio Lower Upper
 91 100
 92 0.0 26.6 79.7#
 134 0.0 12.9 38.7#





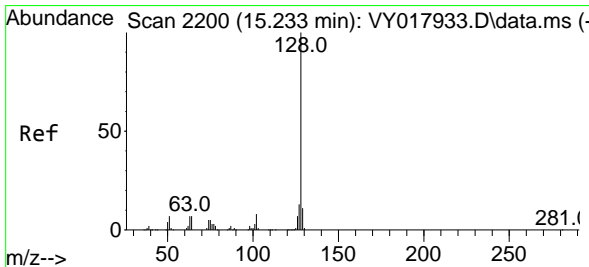
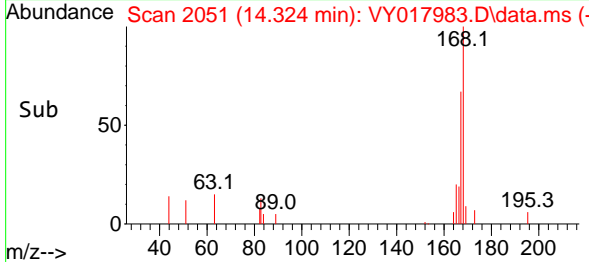
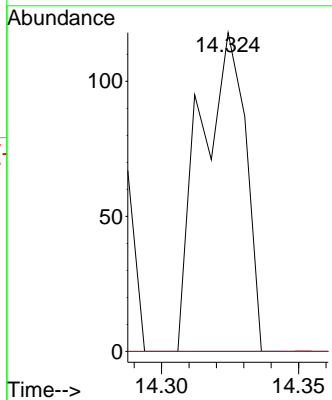
#92
 1,2-Dibromo-3-Chloropropane
 Concen: 76.96 ug/l
 RT: 14.324 min Scan# 2051
 Delta R.T. -0.030 min
 Lab File: VY017983.D
 Acq: 18 Apr 2024 18:02

Instrument : MSVOA_Y
 ClientSampleId : TOPSOIL-LKWD-DENALI-5

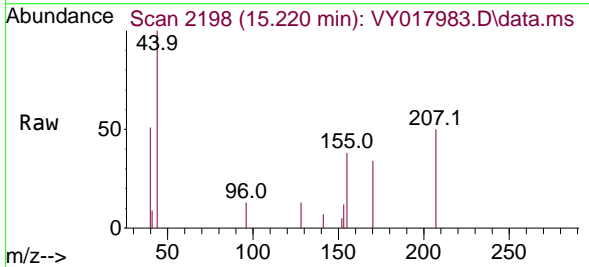


Tgt Ion: 75 Resp: 136

Ion	Ratio	Lower	Upper
75	100		
155	0.0	48.6	145.8#
157	0.0	62.7	188.2#



#95
 Naphthalene
 Concen: 6.11 ug/l
 RT: 15.220 min Scan# 2198
 Delta R.T. -0.012 min
 Lab File: VY017983.D
 Acq: 18 Apr 2024 18:02



Tgt Ion: 128 Resp: 179

Ion	Ratio	Lower	Upper
128	100		
127	0.0	10.6	16.0#
129	0.0	8.6	13.0#

