

Data Path : Z:\voasrv\HPCHEM1\MSVOA\_Y\Data\VY041921\  
Data File : VY004487.D  
Acq On : 19 Apr 2021 10:38  
Operator : SY/MD  
Sample : VY0419SBL01  
Misc : 5.00G/5ML/MSVOA\_Y/SOIL  
ALS Vial : 3 Sample Multiplier: 1

Instrument :  
MSVOA\_Y  
ClientSampleId :  
VY0419SBL01

Integration Parameters: RTEINT.P  
Integrator: RTE  
Smoothing : ON Filtering: 5  
Sampling : 1 Min Area: 3 % of largest Peak  
Start Thrs: 0.2 Max Peaks: 100  
Stop Thrs : 0 Peak Location: TOP

If leading or trailing edge < 100 prefer < Baseline drop else tangent >  
Peak separation: 5

Method : Z:\voasrv\HPCHEM1\MSVOA\_Y\methods\82Y041221S.M  
Title : SW846 8260

Signal : TIC: VY004487.D\data.ms

peak #	R.T. min	first scan	max scan	last scan	PK TY	peak height	corr. area	corr. % max.	% of total
1	2.211	54	64	66	rBV3	5716	15585	1.72%	0.309%
2	2.564	115	122	123	rBV3	12646	25164	2.77%	0.499%
3	4.729	468	477	491	rVB2	6058	19190	2.11%	0.381%
4	7.728	959	969	974	rBV	117341	272041	29.95%	5.395%
5	7.795	974	980	991	rVB	199675	453544	49.93%	8.994%
6	8.149	1020	1038	1049	rBV2	137752	420037	46.24%	8.330%
7	8.697	1119	1128	1140	rVB	326450	641979	70.67%	12.731%
8	9.752	1292	1301	1308	rBV	9042	17873	1.97%	0.354%
9	10.185	1365	1372	1379	rBV	547905	908443	100.00%	18.016%
10	10.581	1430	1437	1444	rBV	33465	59408	6.54%	1.178%
11	11.319	1553	1558	1565	rVB	34223	57164	6.29%	1.134%
12	11.496	1579	1587	1597	rBV	477742	785677	86.49%	15.581%
13	12.483	1742	1749	1759	rBV2	384937	622269	68.50%	12.341%
14	12.849	1804	1809	1816	rVB4	5857	10976	1.21%	0.218%
15	13.184	1859	1864	1871	rVB3	7333	11986	1.32%	0.238%
16	13.428	1898	1904	1912	rVB	469791	707550	77.89%	14.032%
17	13.965	1988	1992	1999	rVB2	8008	13606	1.50%	0.270%

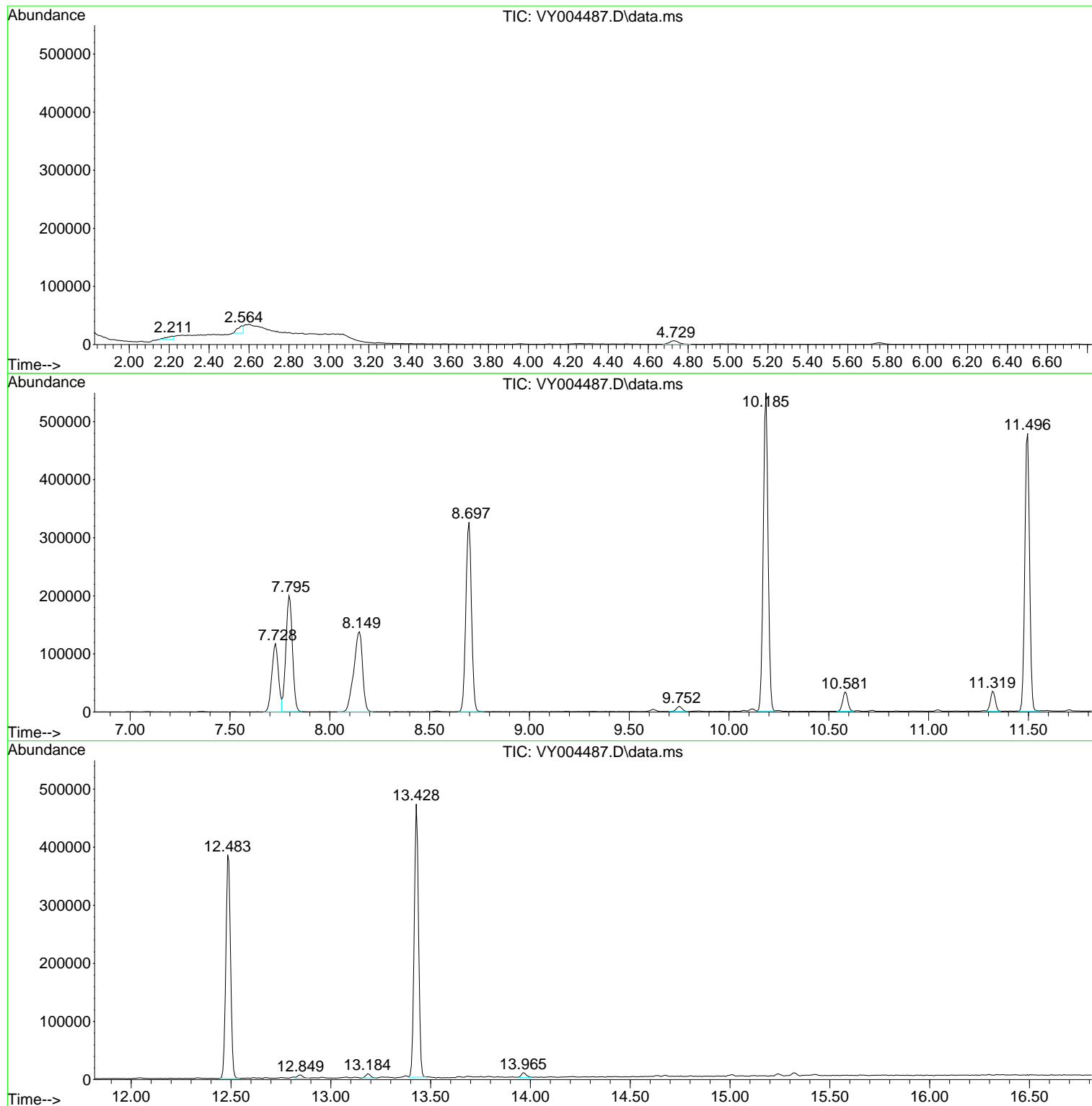
Sum of corrected areas: 5042492

Data Path : Z:\voasrv\HPCHEM1\MSVOA\_Y\Data\VY041921\  
Data File : VY004487.D  
Acq On : 19 Apr 2021 10:38  
Operator : SY/MD  
Sample : VY0419SBL01  
Misc : 5.00G/5ML/MSVOA\_Y/SOIL  
ALS Vial : 3 Sample Multiplier: 1

Instrument :  
MSVOA\_Y  
ClientSampleId :  
VY0419SBL01

Quant Method : Z:\voasrv\HPCHEM1\MSVOA\_Y\methods\82Y041221S.M  
Quant Title : SW846 8260

TIC Library : C:\DATABASE\NIST11.L  
TIC Integration Parameters: LSCINT.P



Data Path : Z:\voasrv\HPCHEM1\MSVOA\_Y\Data\VY041921\  
Data File : VY004487.D  
Acq On : 19 Apr 2021 10:38  
Operator : SY/MD  
Sample : VY0419SBL01  
Misc : 5.00G/5ML/MSVOA\_Y/SOIL  
ALS Vial : 3 Sample Multiplier: 1

**Instrument :**  
MSVOA\_Y  
**ClientSampleId :**  
VY0419SBL01

Quant Method : Z:\voasrv\HPCHEM1\MSVOA\_Y\methods\82Y041221S.M  
Quant Title : SW846 8260

TIC Library : C:\DATABASE\NIST11.L  
TIC Integration Parameters: LSCINT.P

No Library Search Compounds Detected

\*\*\*\*\*

Data Path : Z:\voasrv\HPCHEM1\MSVOA\_Y\Data\VY041921\  
Data File : VY004487.D  
Acq On : 19 Apr 2021 10:38  
Operator : SY/MD  
Sample : VY0419SBL01  
Misc : 5.00G/5ML/MSVOA\_Y/SOIL  
ALS Vial : 3 Sample Multiplier: 1

Instrument :  
MSVOA\_Y  
ClientSampleId :  
VY0419SBL01

Quant Method : Z:\voasrv\HPCHEM1\MSVOA\_Y\methods\82Y041221S.M  
Quant Title : SW846 8260

TIC Library : C:\DATABASE\NIST11.L  
TIC Integration Parameters: LSCINT.P

TIC Top Hit name	RT	EstConc	Units	Response	--Internal Standard--			
					#	RT	Resp	Conc

---