

Data Path : Z:\voasrv\HPCHEM1\MSVOA_Y\Data\VY042021\
 Data File : VY004523.D
 Acq On : 20 Apr 2021 13:02
 Operator : SY/MD
 Sample : M2090-02
 Misc : 7.02G/5ML/MSVOA_Y/SOIL
 ALS Vial : 11 Sample Multiplier: 1

Instrument :
 MSVOA_Y
 ClientSampleId :
 SEDGWICK-VOC-2

Quant Time: Apr 21 08:50:12 2021
 Quant Method : Z:\voasrv\HPCHEM1\MSVOA_Y\methods\82Y041221S.M
 Quant Title : SW846 8260
 QLast Update : Tue Apr 13 03:38:02 2021
 Response via : Initial Calibration

Compound	R.T.	QIon	Response	Conc	Units	Dev(Min)

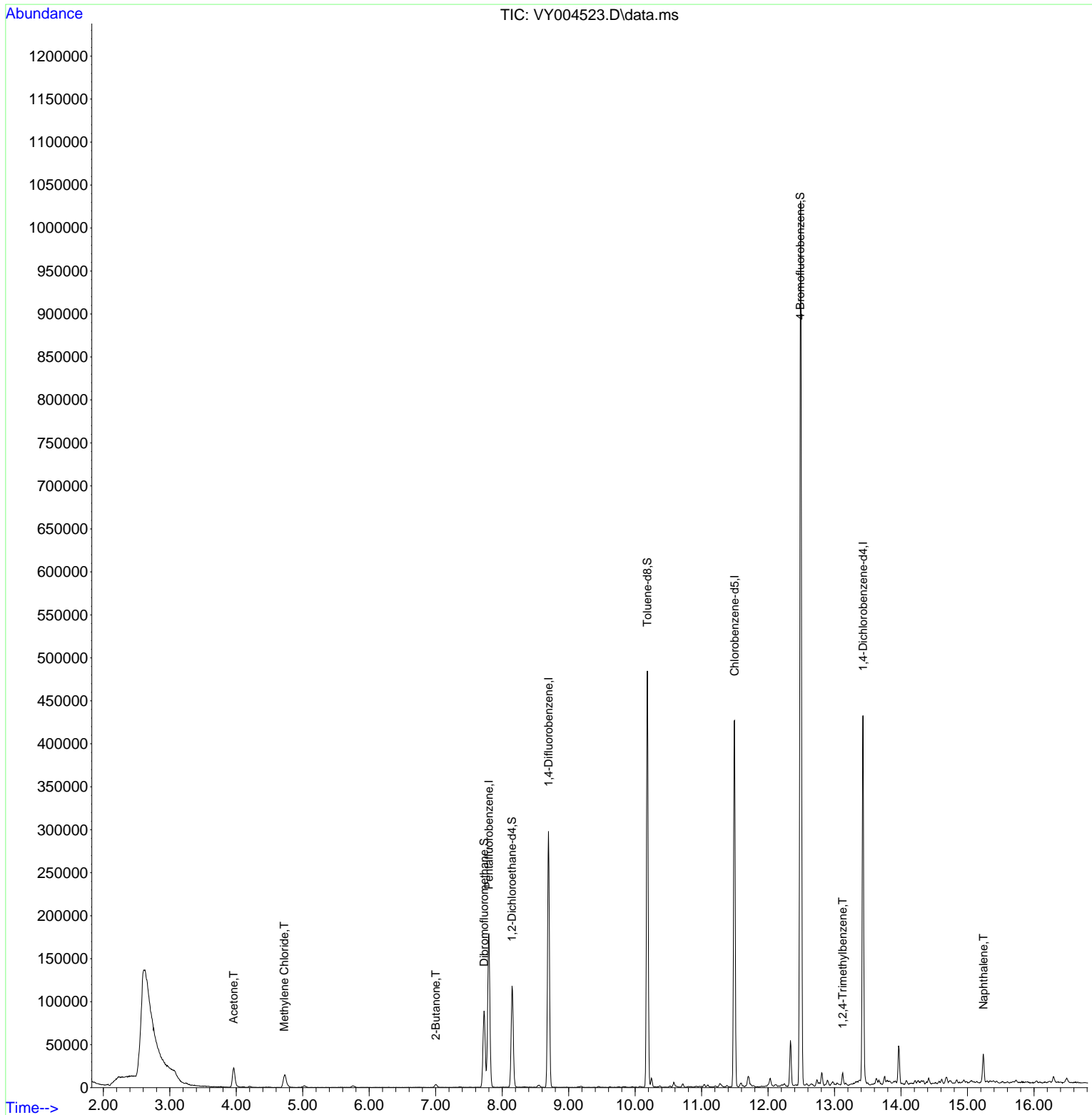
Internal Standards						
1) Pentafluorobenzene	7.801	168	137931	50.00	ug/l	0.00
34) 1,4-Difluorobenzene	8.697	114	241137	50.00	ug/l	0.00
63) Chlorobenzene-d5	11.496	117	226589	50.00	ug/l	0.00
72) 1,4-Dichlorobenzene-d4	13.428	152	100898	50.00	ug/l	0.00
System Monitoring Compounds						
33) 1,2-Dichloroethane-d4	8.149	65	89806	58.60	ug/l	0.00
Spiked Amount	50.000	Range	50 - 163	Recovery	=	117.20%
35) Dibromofluoromethane	7.728	113	61751	46.14	ug/l	0.00
Spiked Amount	50.000	Range	54 - 147	Recovery	=	92.28%
50) Toluene-d8	10.185	98	300985	52.88	ug/l	0.00
Spiked Amount	50.000	Range	49 - 140	Recovery	=	105.76%
62) 4-Bromofluorobenzene	12.483	95	105541	54.64	ug/l	0.00
Spiked Amount	50.000	Range	25 - 144	Recovery	=	109.28%
Target Compounds						
						Qvalue
16) Acetone	3.960	43	40228	113.15	ug/l	93
20) Methylene Chloride	4.722	84	10240	6.92	ug/l #	92
25) 2-Butanone	7.002	43	6037	10.34	ug/l	91
84) 1,2,4-Trimethylbenzene	13.123	105	7212	1.13	ug/l	100
95) Naphthalene	15.239	128	25533	6.13	ug/l	99

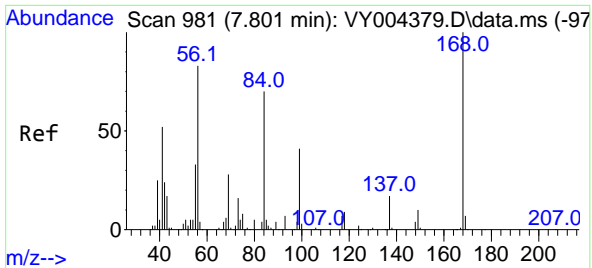
(#) = qualifier out of range (m) = manual integration (+) = signals summed

Data Path : Z:\voasrv\HPCHEM1\MSVOA_Y\Data\VY042021\
 Data File : VY004523.D
 Acq On : 20 Apr 2021 13:02
 Operator : SY/MD
 Sample : M2090-02
 Misc : 7.02G/5ML/MSVOA_Y/SOIL
 ALS Vial : 11 Sample Multiplier: 1

Instrument :
 MSVOA_Y
 ClientSampleId :
 SEDGWICK-VOC-2

Quant Time: Apr 21 08:50:12 2021
 Quant Method : Z:\voasrv\HPCHEM1\MSVOA_Y\methods\82Y041221S.M
 Quant Title : SW846 8260
 QLast Update : Tue Apr 13 03:38:02 2021
 Response via : Initial Calibration

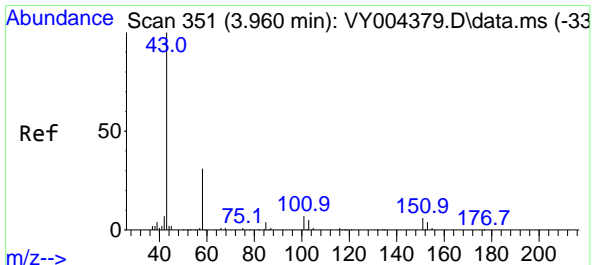
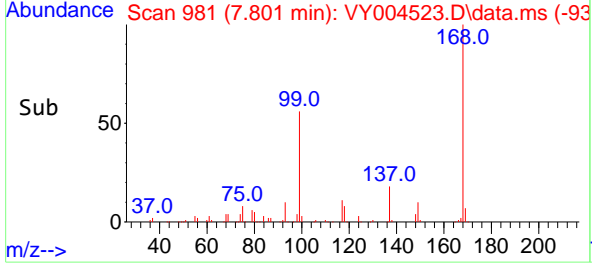
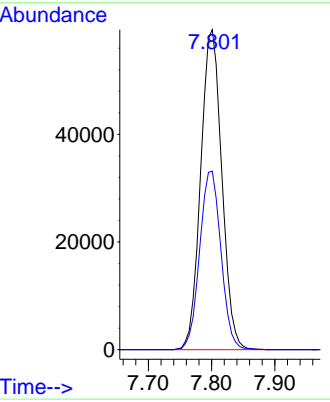
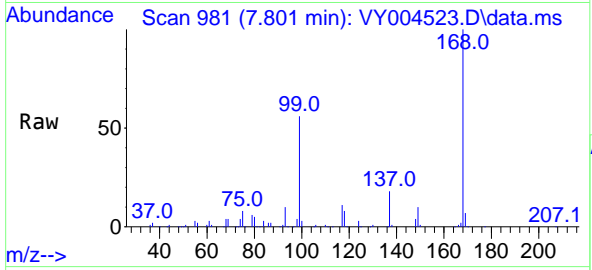




#1
 Pentafluorobenzene
 Concen: 50.00 ug/l
 RT: 7.801 min Scan# 981
 Delta R.T. 0.000 min
 Lab File: VY004523.D
 Acq: 20 Apr 2021 13:02

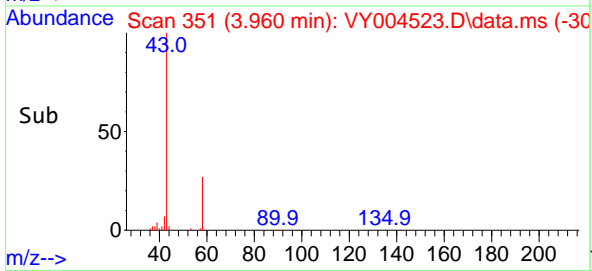
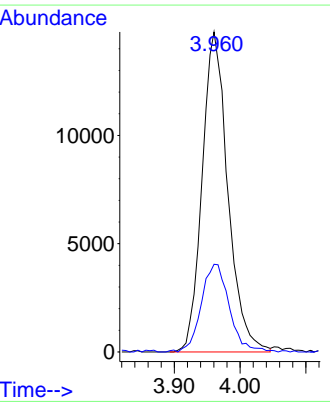
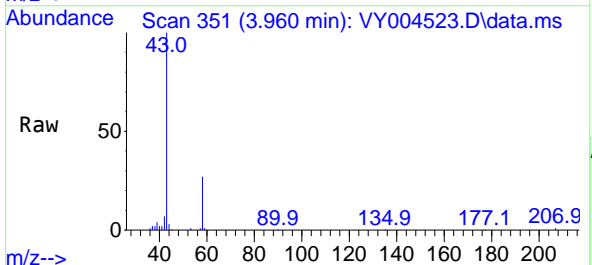
Instrument :
 MSVOA_Y
 ClientSampleId :
 SEDGWICK-VOC-2

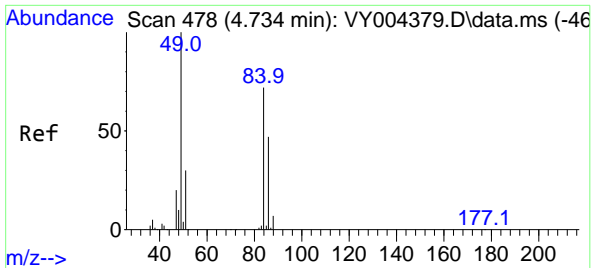
Tgt Ion:168 Resp: 137931
 Ion Ratio Lower Upper
 168 100
 99 55.8 45.5 68.3



#16
 Acetone
 Concen: 113.15 ug/l
 RT: 3.960 min Scan# 351
 Delta R.T. 0.000 min
 Lab File: VY004523.D
 Acq: 20 Apr 2021 13:02

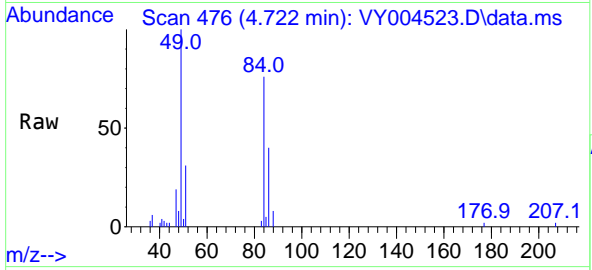
Tgt Ion: 43 Resp: 40228
 Ion Ratio Lower Upper
 43 100
 58 27.0 24.6 37.0





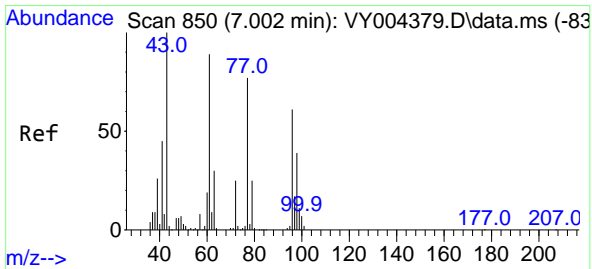
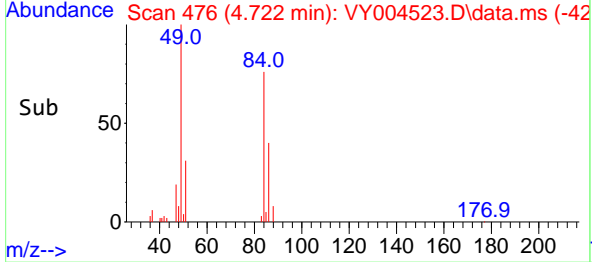
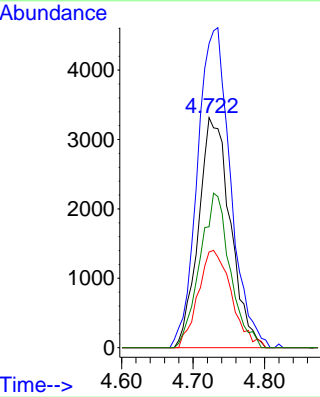
#20
 Methylene Chloride
 Concen: 6.92 ug/l
 RT: 4.722 min Scan# 476
 Delta R.T. -0.012 min
 Lab File: VY004523.D
 Acq: 20 Apr 2021 13:02

Instrument :
 MSVOA_Y
 ClientSampleId :
 SEDGWICK-VOC-2

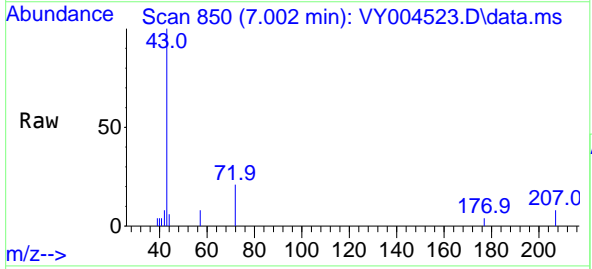


Tgt Ion: 84 Resp: 10240

Ion	Ratio	Lower	Upper
84	100		
49	132.2	111.2	166.8
51	41.6	33.4	50.2
86	52.6	52.7	79.1#

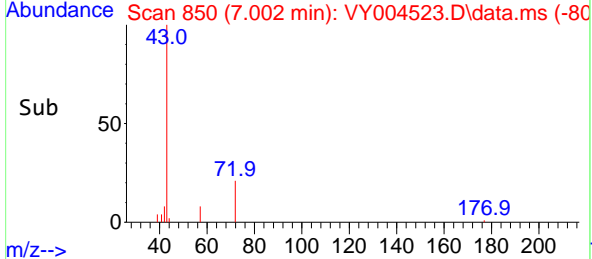
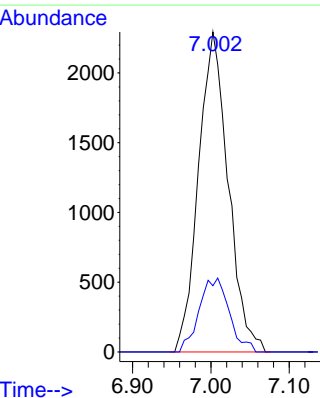


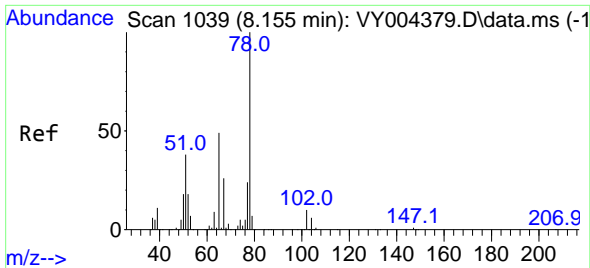
#25
 2-Butanone
 Concen: 10.34 ug/l
 RT: 7.002 min Scan# 850
 Delta R.T. 0.000 min
 Lab File: VY004523.D
 Acq: 20 Apr 2021 13:02



Tgt Ion: 43 Resp: 6037

Ion	Ratio	Lower	Upper
43	100		
72	20.7	20.2	30.2

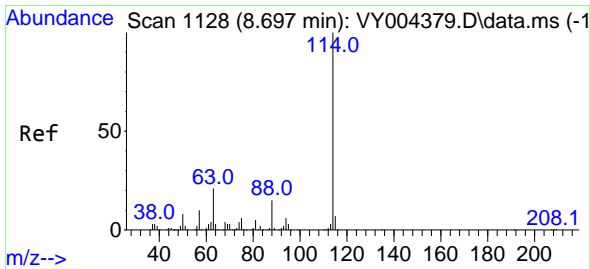
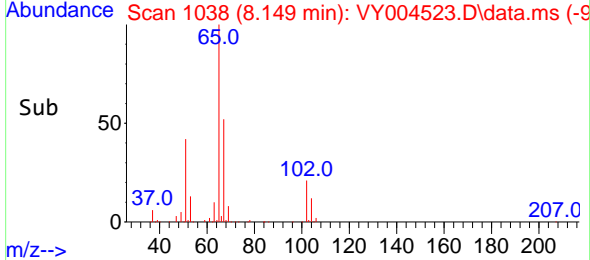
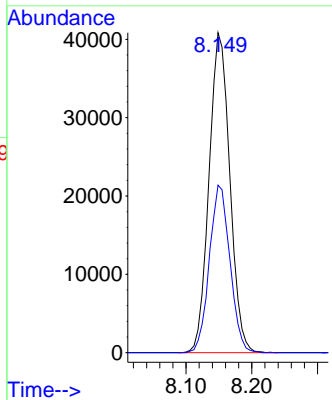
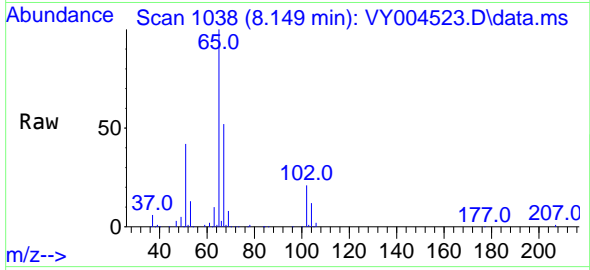




#33
 1,2-Dichloroethane-d4
 Concen: 58.60 ug/l
 RT: 8.149 min Scan# 1038
 Delta R.T. -0.006 min
 Lab File: VY004523.D
 Acq: 20 Apr 2021 13:02

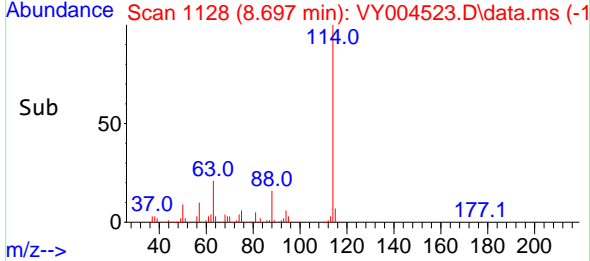
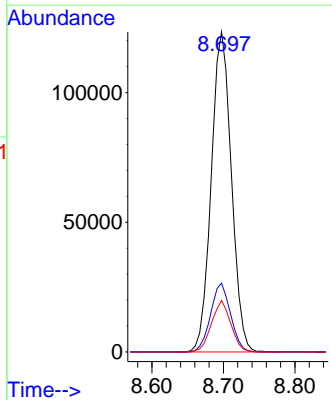
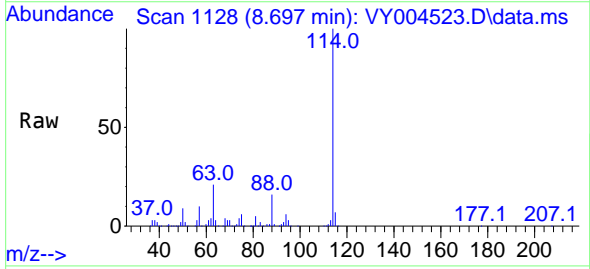
Instrument :
 MSVOA_Y
ClientSampled :
 SEDGWICK-VOC-2

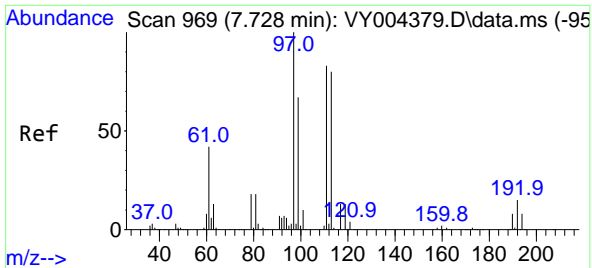
Tgt Ion: 65 Resp: 89806
 Ion Ratio Lower Upper
 65 100
 67 51.9 0.0 106.4



#34
 1,4-Difluorobenzene
 Concen: 50.00 ug/l
 RT: 8.697 min Scan# 1128
 Delta R.T. 0.000 min
 Lab File: VY004523.D
 Acq: 20 Apr 2021 13:02

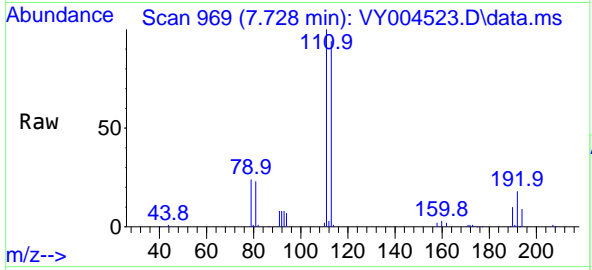
Tgt Ion:114 Resp: 241137
 Ion Ratio Lower Upper
 114 100
 63 21.5 0.0 42.4
 88 16.1 0.0 30.8





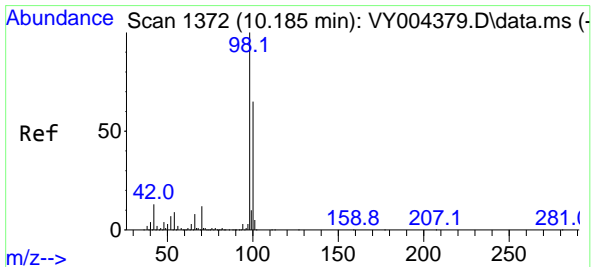
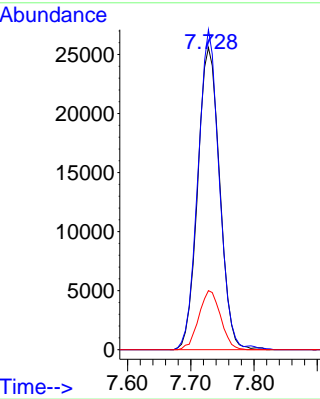
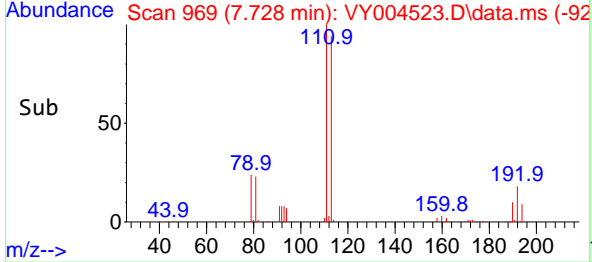
#35
 Dibromofluoromethane
 Concen: 46.14 ug/l
 RT: 7.728 min Scan# 969
 Delta R.T. 0.000 min
 Lab File: VY004523.D
 Acq: 20 Apr 2021 13:02

Instrument :
 MSVOA_Y
ClientSampled :
 SEDGWICK-VOC-2

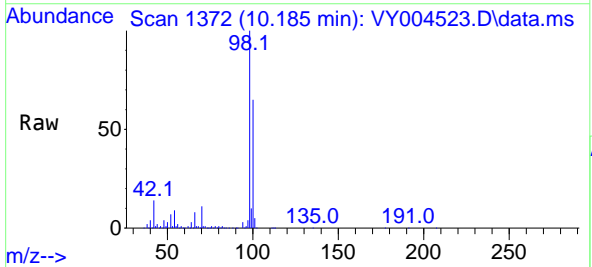


Tgt Ion:113 Resp: 61751

Ion	Ratio	Lower	Upper
113	100		
111	102.6	82.6	123.8
192	19.4	16.1	24.1

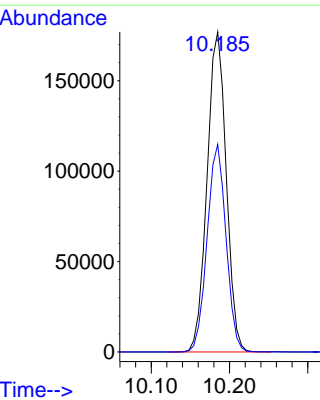
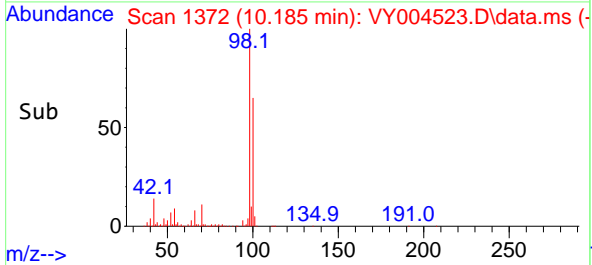


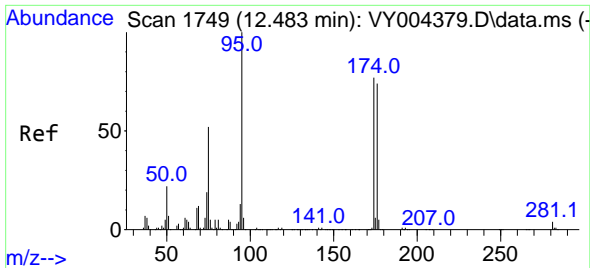
#50
 Toluene-d8
 Concen: 52.88 ug/l
 RT: 10.185 min Scan# 1372
 Delta R.T. 0.000 min
 Lab File: VY004523.D
 Acq: 20 Apr 2021 13:02



Tgt Ion: 98 Resp: 300985

Ion	Ratio	Lower	Upper
98	100		
100	63.9	51.8	77.6



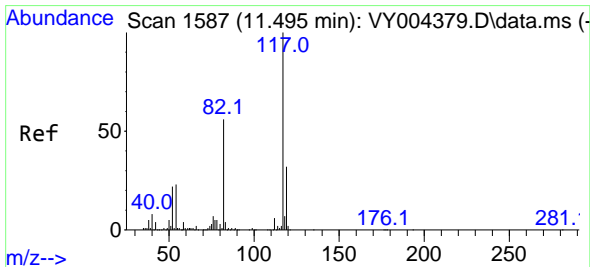
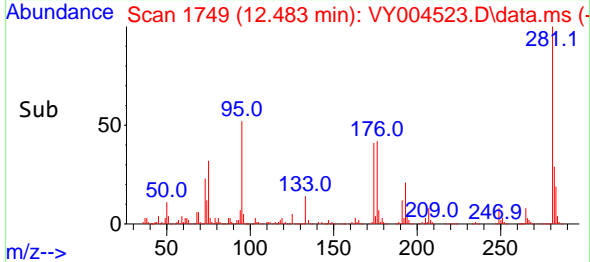
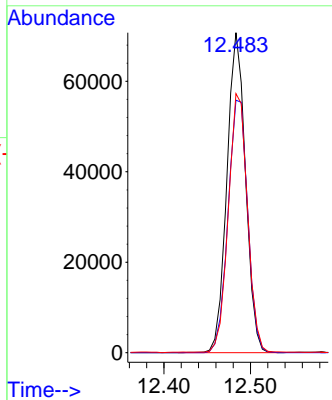
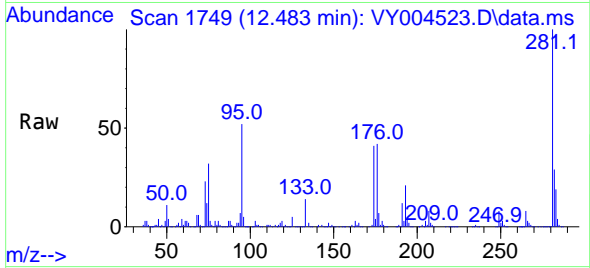


#62
 4-Bromofluorobenzene
 Concen: 54.64 ug/l
 RT: 12.483 min Scan# 1749
 Delta R.T. 0.000 min
 Lab File: VY004523.D
 Acq: 20 Apr 2021 13:02

Instrument :
 MSVOA_Y
ClientSampled :
 SEDGWICK-VOC-2

Tgt Ion: 95 Resp: 105541

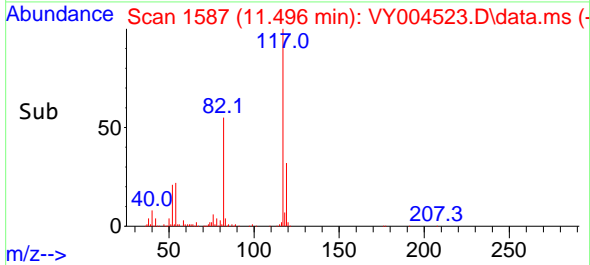
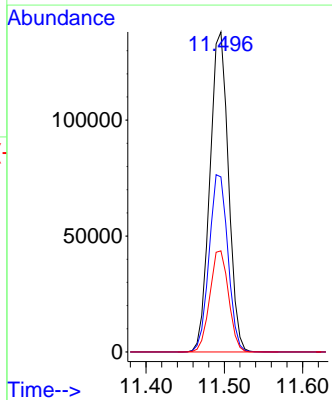
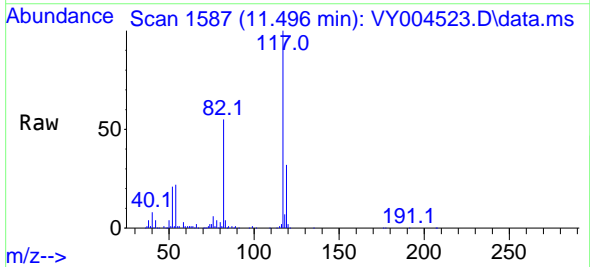
Ion	Ratio	Lower	Upper
95	100		
174	83.5	0.0	162.4
176	84.0	0.0	156.0

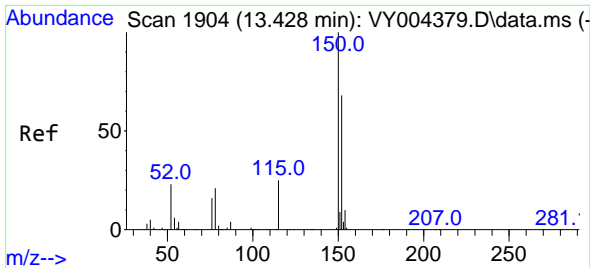


#63
 Chlorobenzene-d5
 Concen: 50.00 ug/l
 RT: 11.496 min Scan# 1587
 Delta R.T. 0.000 min
 Lab File: VY004523.D
 Acq: 20 Apr 2021 13:02

Tgt Ion: 117 Resp: 226589

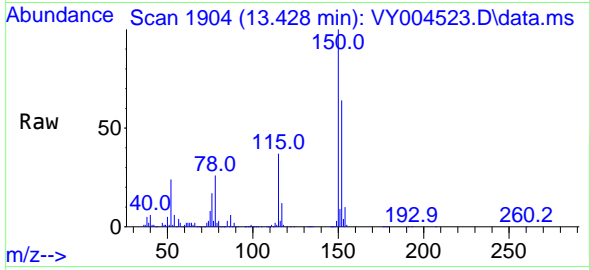
Ion	Ratio	Lower	Upper
117	100		
82	54.7	44.9	67.3
119	31.6	25.4	38.0





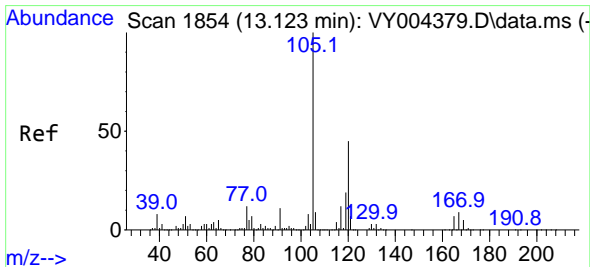
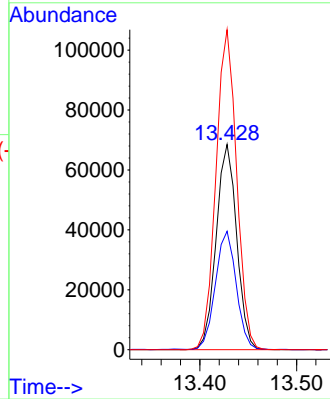
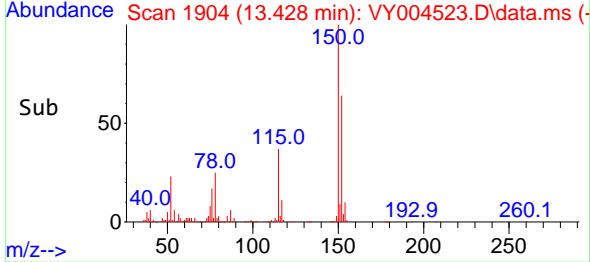
#72
 1,4-Dichlorobenzene-d4
 Concen: 50.00 ug/l
 RT: 13.428 min Scan# 1904
 Delta R.T. 0.000 min
 Lab File: VY004523.D
 Acq: 20 Apr 2021 13:02

Instrument :
 MSVOA_Y
ClientSampled :
 SEDGWICK-VOC-2

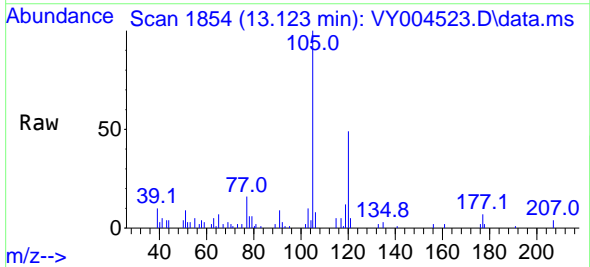


Tgt Ion:152 Resp: 100898

Ion	Ratio	Lower	Upper
152	100		
115	58.9	29.6	88.8
150	157.2	0.0	348.4

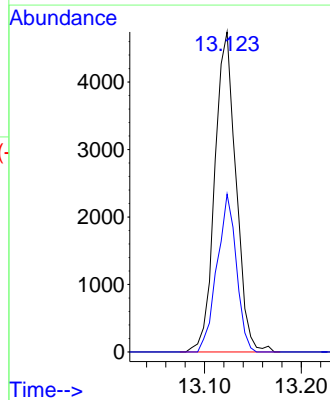
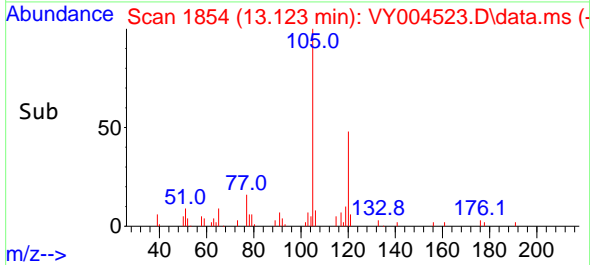


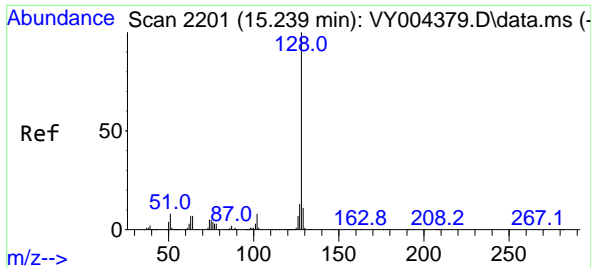
#84
 1,2,4-Trimethylbenzene
 Concen: 1.13 ug/l
 RT: 13.123 min Scan# 1854
 Delta R.T. 0.000 min
 Lab File: VY004523.D
 Acq: 20 Apr 2021 13:02



Tgt Ion:105 Resp: 7212

Ion	Ratio	Lower	Upper
105	100		
120	45.0	22.4	67.3





#95
 Naphthalene
 Concen: 6.13 ug/l
 RT: 15.239 min Scan# 2201
 Delta R.T. 0.000 min
 Lab File: VY004523.D
 Acq: 20 Apr 2021 13:02

Instrument :
 MSVOA_Y
ClientSampled :
 SEDGWICK-VOC-2

Tgt Ion:128 Resp: 25533

Ion	Ratio	Lower	Upper
128	100		
127	12.9	10.2	15.2
129	11.5	8.8	13.2

