

Data Path : Z:\voasrv\HPCHEM1\MSVOA_Y\Data\VY042121\
 Data File : VY004566.D
 Acq On : 21 Apr 2021 19:16
 Operator : SY/MD
 Sample : M2090-11RE
 Misc : 6.78G/5ML/MSVOA_Y/SOIL
 ALS Vial : 25 Sample Multiplier: 1

Instrument :
 MSVOA_Y
 ClientSampleId :
 SEDGWICK-VOC-7RE

Quant Time: Apr 22 11:20:52 2021
 Quant Method : Z:\voasrv\HPCHEM1\MSVOA_Y\methods\82Y041221S.M
 Quant Title : SW846 8260
 QLast Update : Tue Apr 13 03:38:02 2021
 Response via : Initial Calibration

Compound	R.T.	QIon	Response	Conc	Units	Dev(Min)

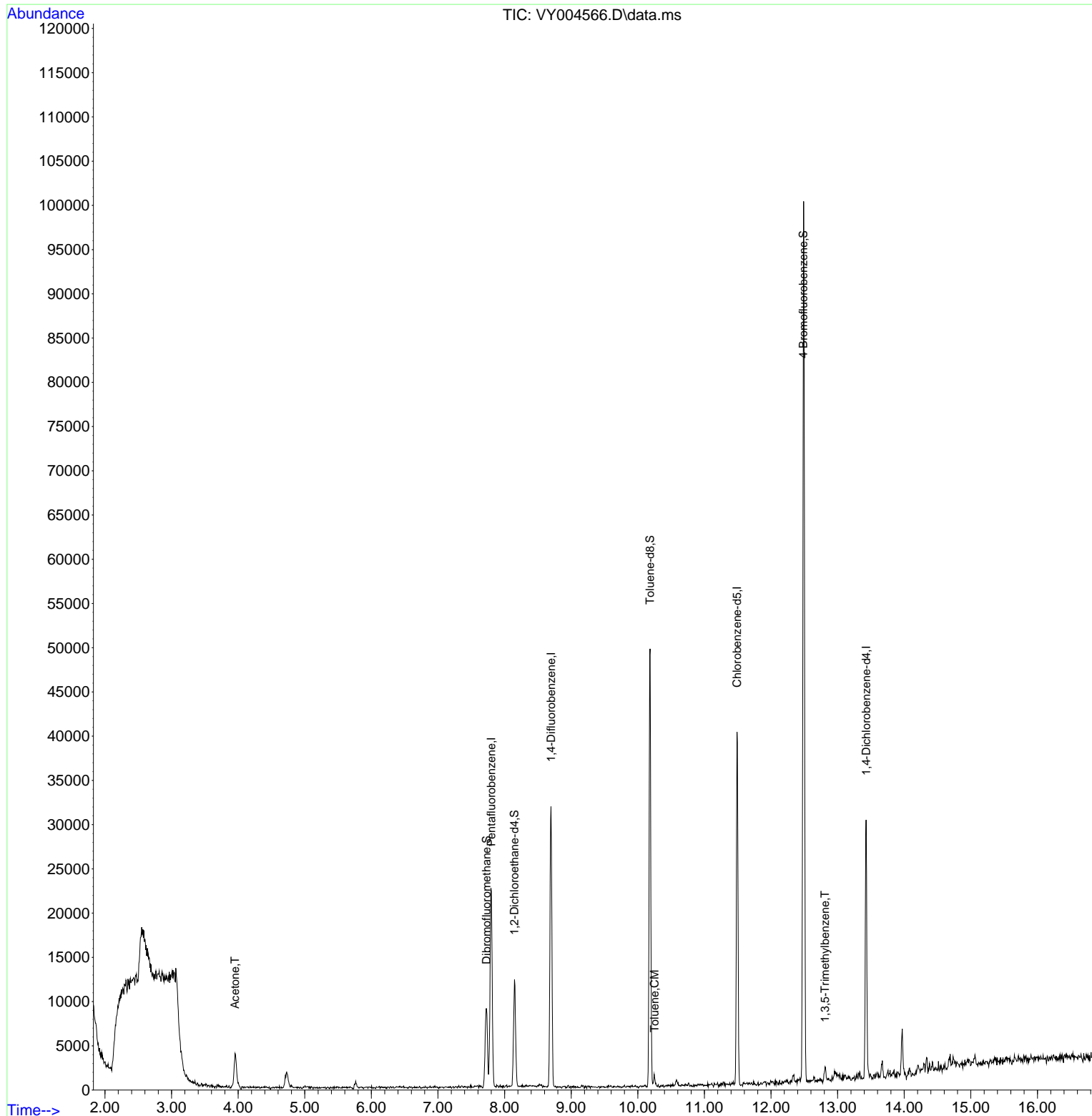
Internal Standards						
1) Pentafluorobenzene	7.801	168	17495	50.00	ug/l	0.00
34) 1,4-Difluorobenzene	8.697	114	26106	50.00	ug/l	0.00
63) Chlorobenzene-d5	11.490	117	20641	50.00	ug/l	0.00
72) 1,4-Dichlorobenzene-d4	13.428	152	7079	50.00	ug/l	0.00
System Monitoring Compounds						
33) 1,2-Dichloroethane-d4	8.149	65	8862	45.59	ug/l	0.00
Spiked Amount	50.000	Range	50 - 163	Recovery	=	91.18%
35) Dibromofluoromethane	7.728	113	6217	42.91	ug/l	0.00
Spiked Amount	50.000	Range	54 - 147	Recovery	=	85.82%
50) Toluene-d8	10.185	98	30367	49.28	ug/l	0.00
Spiked Amount	50.000	Range	49 - 140	Recovery	=	98.56%
62) 4-Bromofluorobenzene	12.483	95	7896	37.76	ug/l	0.00
Spiked Amount	50.000	Range	25 - 144	Recovery	=	75.52%
Target Compounds						
						Qvalue
16) Acetone	3.954	43	6707	155.28	ug/l	97
52) Toluene	10.252	92	595	1.26	ug/l	96
80) 1,3,5-Trimethylbenzene	12.813	105	885	1.99	ug/l	80

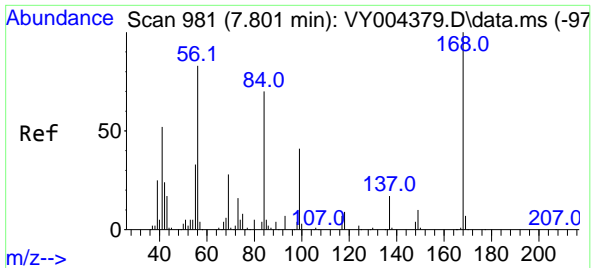
(#) = qualifier out of range (m) = manual integration (+) = signals summed

Data Path : Z:\voasrv\HPCHEM1\MSVOA_Y\Data\VY042121\
 Data File : VY004566.D
 Acq On : 21 Apr 2021 19:16
 Operator : SY/MD
 Sample : M2090-11RE
 Misc : 6.78G/5ML/MSVOA_Y/SOIL
 ALS Vial : 25 Sample Multiplier: 1

Instrument :
 MSVOA_Y
 ClientSampleId :
 SEDGWICK-VOC-7RE

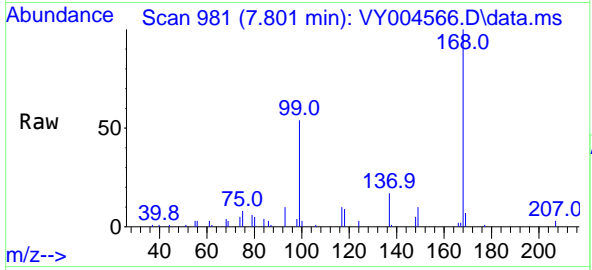
Quant Time: Apr 22 11:20:52 2021
 Quant Method : Z:\voasrv\HPCHEM1\MSVOA_Y\methods\82Y041221S.M
 Quant Title : SW846 8260
 QLast Update : Tue Apr 13 03:38:02 2021
 Response via : Initial Calibration



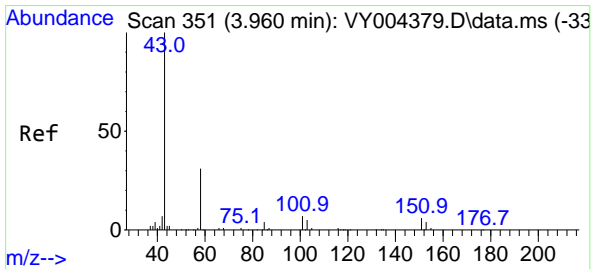
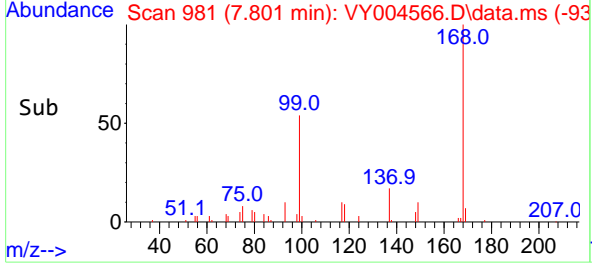
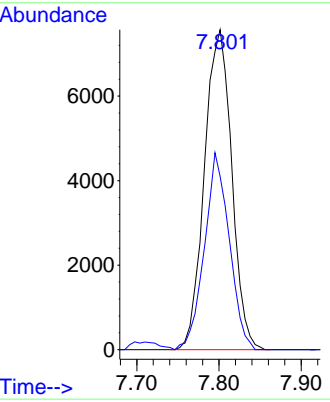


#1
 Pentafluorobenzene
 Concen: 50.00 ug/l
 RT: 7.801 min Scan# 981
 Delta R.T. 0.000 min
 Lab File: VY004566.D
 Acq: 21 Apr 2021 19:16

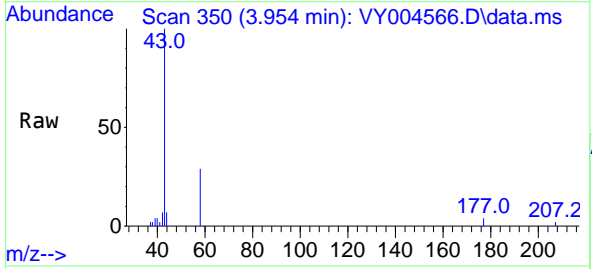
Instrument :
 MSVOA_Y
ClientSampleId :
 SEDGWICK-VOC-7RE



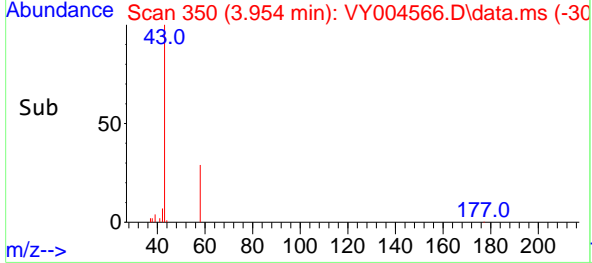
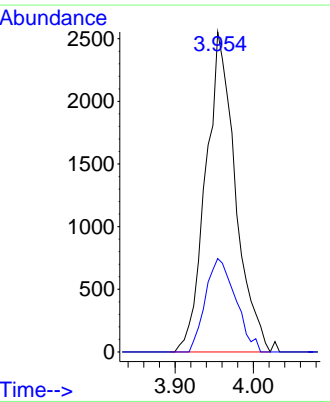
Tgt Ion:168 Resp: 17495
 Ion Ratio Lower Upper
 168 100
 99 54.1 45.5 68.3

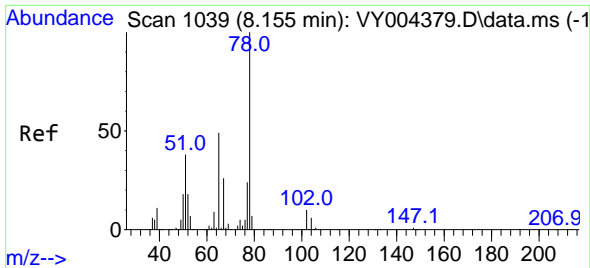


#16
 Acetone
 Concen: 155.28 ug/l
 RT: 3.954 min Scan# 350
 Delta R.T. -0.006 min
 Lab File: VY004566.D
 Acq: 21 Apr 2021 19:16



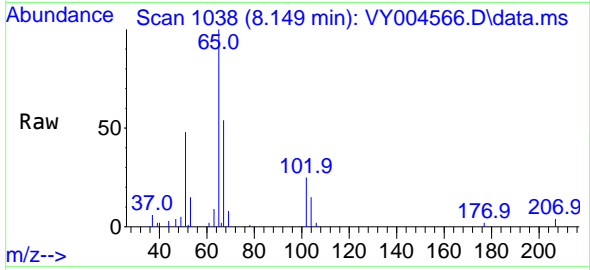
Tgt Ion: 43 Resp: 6707
 Ion Ratio Lower Upper
 43 100
 58 29.2 24.6 37.0



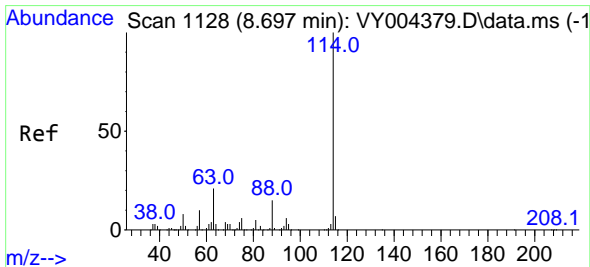
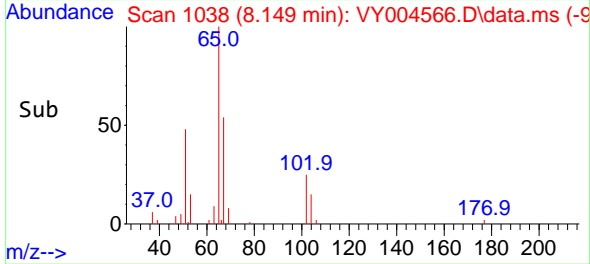
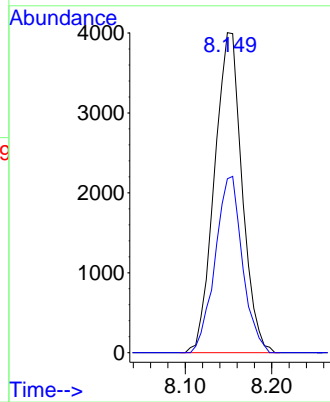


#33
 1,2-Dichloroethane-d4
 Concen: 45.59 ug/l
 RT: 8.149 min Scan# 1038
 Delta R.T. -0.006 min
 Lab File: VY004566.D
 Acq: 21 Apr 2021 19:16

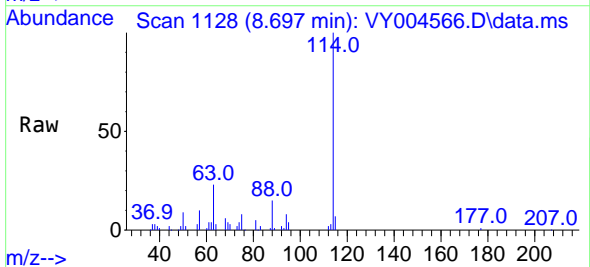
Instrument :
 MSVOA_Y
 ClientSampleId :
 SEDGWICK-VOC-7RE



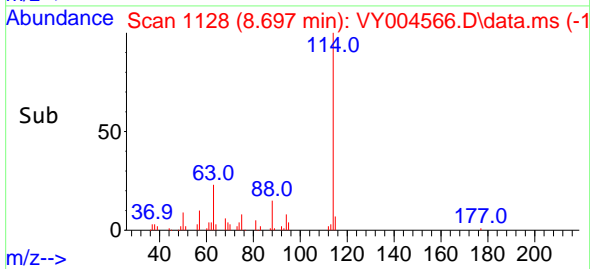
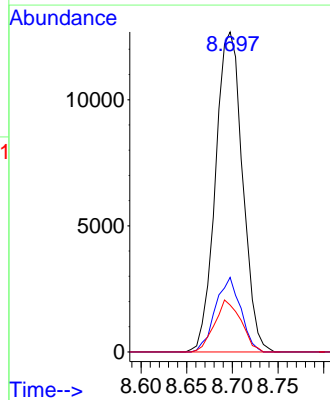
Tgt Ion: 65 Resp: 8862
 Ion Ratio Lower Upper
 65 100
 67 54.4 0.0 106.4

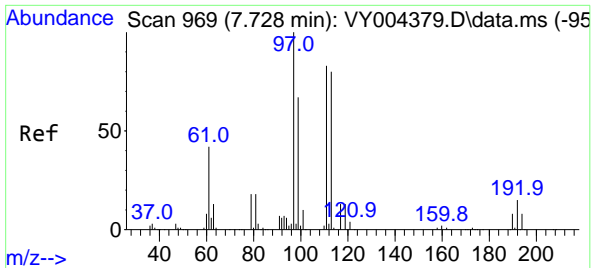


#34
 1,4-Difluorobenzene
 Concen: 50.00 ug/l
 RT: 8.697 min Scan# 1128
 Delta R.T. 0.000 min
 Lab File: VY004566.D
 Acq: 21 Apr 2021 19:16



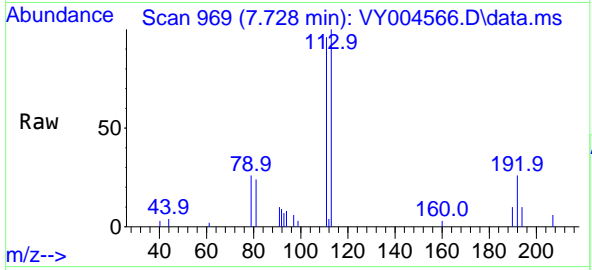
Tgt Ion: 114 Resp: 26106
 Ion Ratio Lower Upper
 114 100
 63 23.3 0.0 42.4
 88 14.7 0.0 30.8





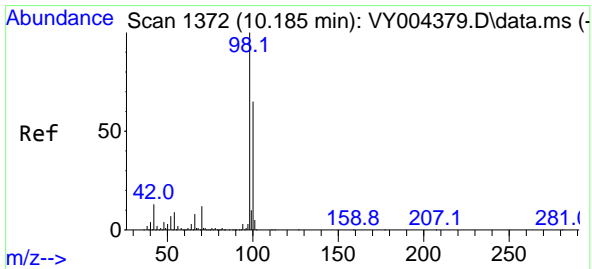
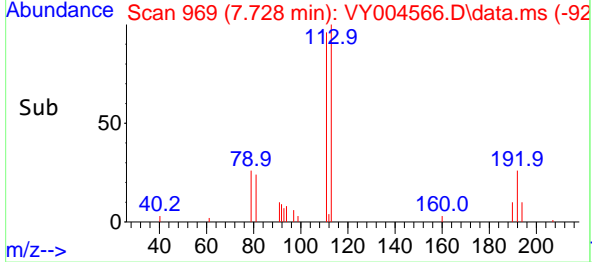
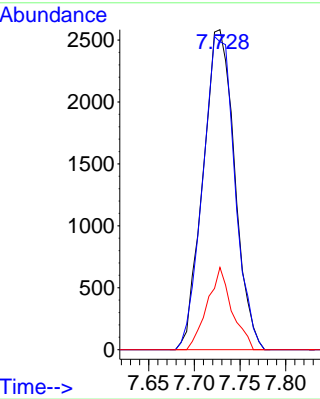
#35
 Dibromofluoromethane
 Concen: 42.91 ug/l
 RT: 7.728 min Scan# 969
 Delta R.T. 0.000 min
 Lab File: VY004566.D
 Acq: 21 Apr 2021 19:16

Instrument :
 MSVOA_Y
ClientSampled :
 SEDGWICK-VOC-7RE

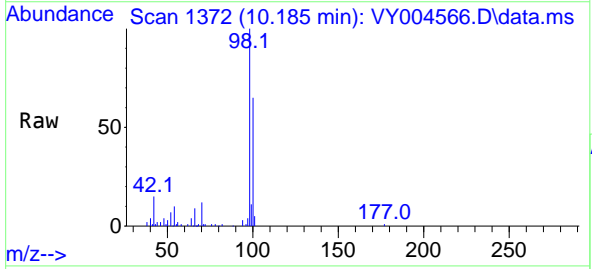


Tgt Ion: 113 Resp: 6217

Ion	Ratio	Lower	Upper
113	100		
111	99.1	82.6	123.8
192	20.0	16.1	24.1

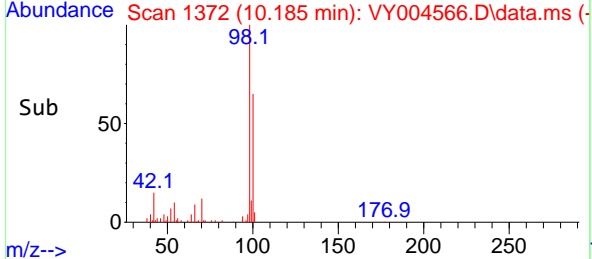
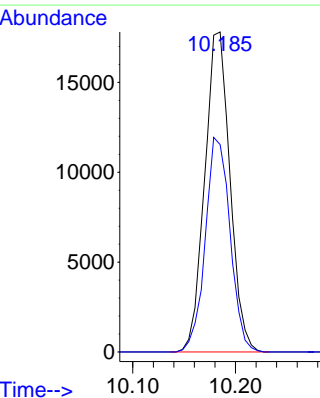


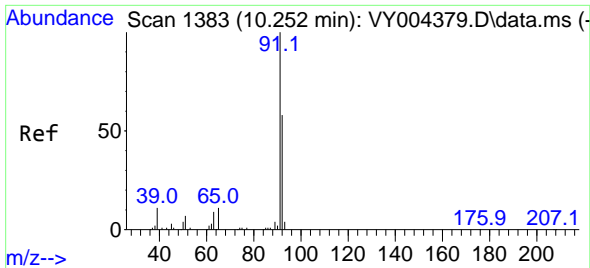
#50
 Toluene-d8
 Concen: 49.28 ug/l
 RT: 10.185 min Scan# 1372
 Delta R.T. 0.000 min
 Lab File: VY004566.D
 Acq: 21 Apr 2021 19:16



Tgt Ion: 98 Resp: 30367

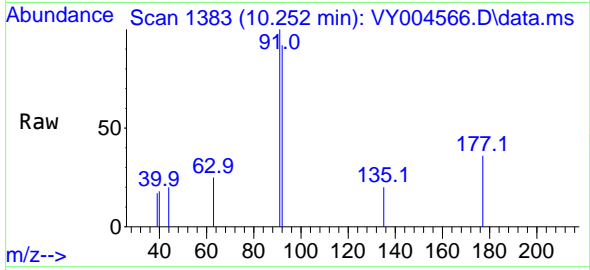
Ion	Ratio	Lower	Upper
98	100		
100	65.8	51.8	77.6



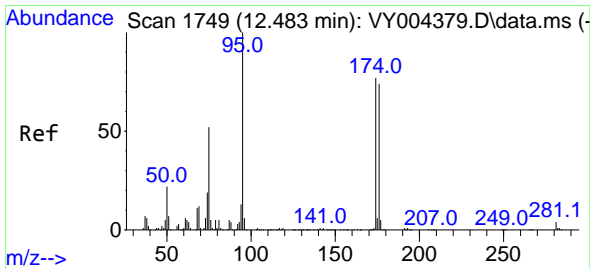
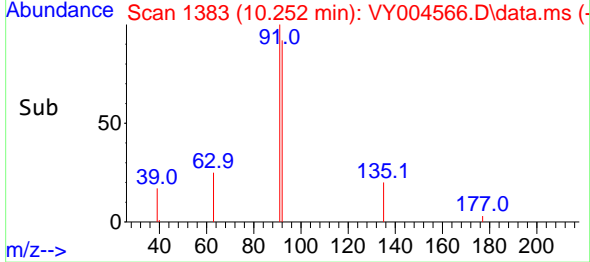
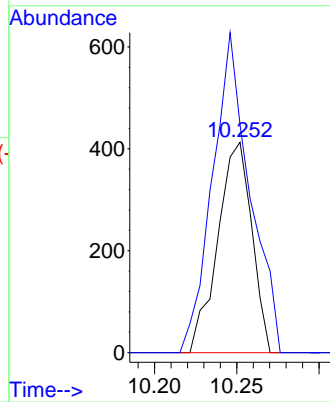


#52
 Toluene
 Concen: 1.26 ug/l
 RT: 10.252 min Scan# 1383
 Delta R.T. 0.000 min
 Lab File: VY004566.D
 Acq: 21 Apr 2021 19:16

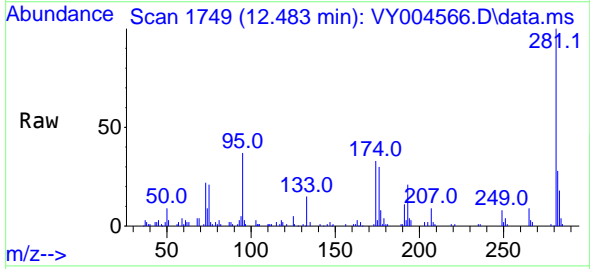
Instrument :
 MSVOA_Y
ClientSampled :
 SEDGWICK-VOC-7RE



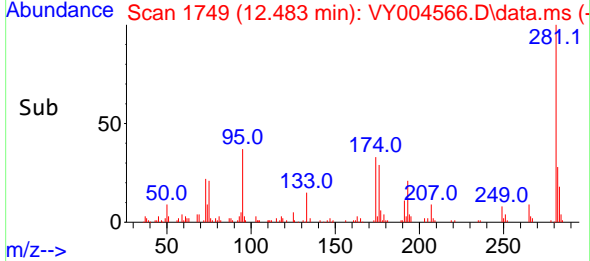
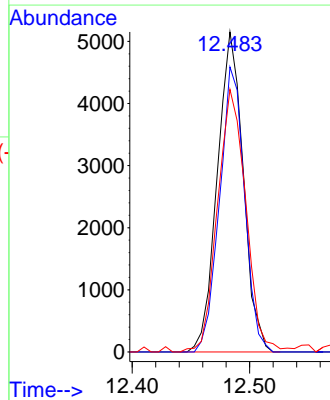
Tgt Ion: 92 Resp: 595
 Ion Ratio Lower Upper
 92 100
 91 166.6 137.8 206.6

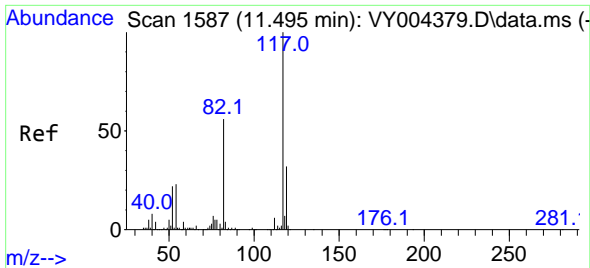


#62
 4-Bromofluorobenzene
 Concen: 37.76 ug/l
 RT: 12.483 min Scan# 1749
 Delta R.T. 0.000 min
 Lab File: VY004566.D
 Acq: 21 Apr 2021 19:16



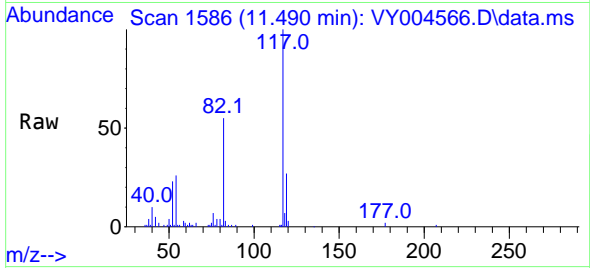
Tgt Ion: 95 Resp: 7896
 Ion Ratio Lower Upper
 95 100
 174 85.4 0.0 162.4
 176 89.4 0.0 156.0





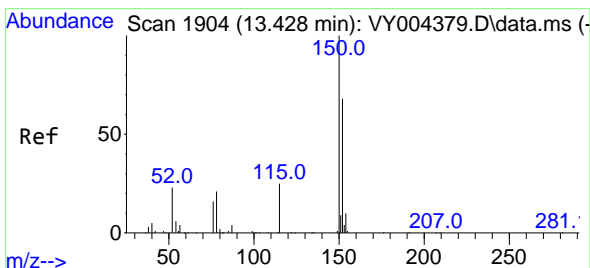
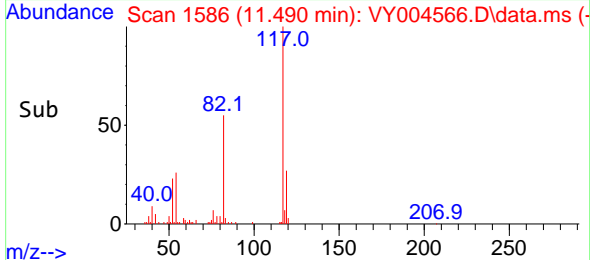
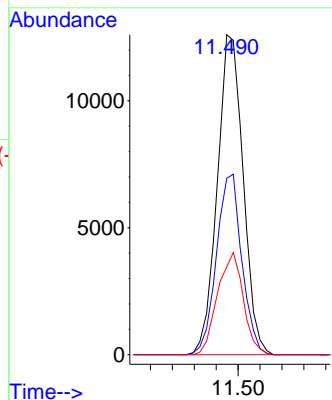
#63
 Chlorobenzene-d5
 Concen: 50.00 ug/l
 RT: 11.490 min Scan# 1586
 Delta R.T. -0.006 min
 Lab File: VY004566.D
 Acq: 21 Apr 2021 19:16

Instrument :
 MSVOA_Y
 ClientSampled :
 SEDGWICK-VOC-7RE

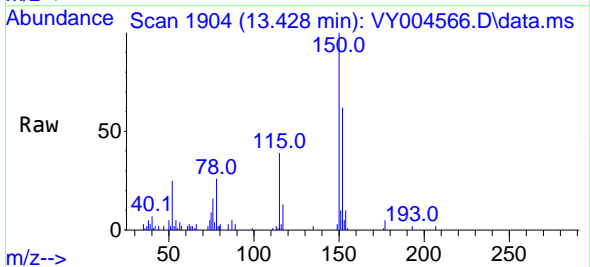


Tgt Ion:117 Resp: 20641

Ion	Ratio	Lower	Upper
117	100		
82	55.1	44.9	67.3
119	27.5	25.4	38.0

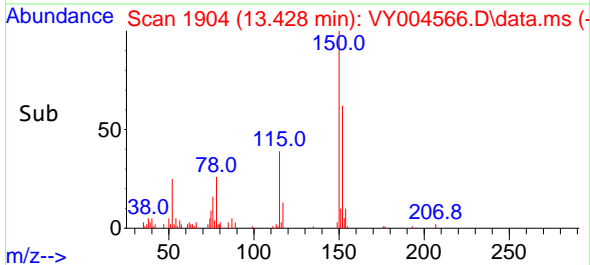
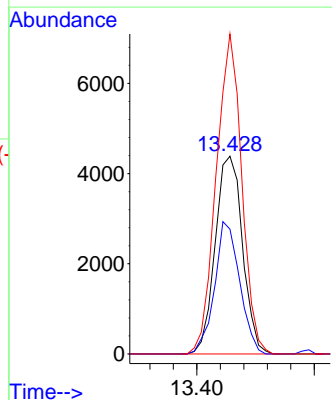


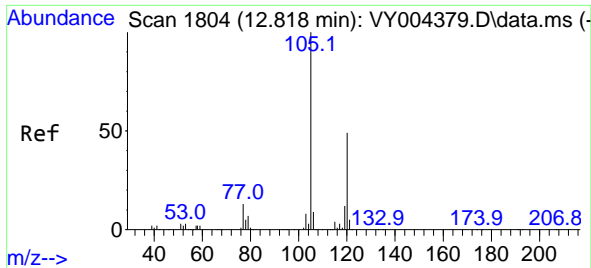
#72
 1,4-Dichlorobenzene-d4
 Concen: 50.00 ug/l
 RT: 13.428 min Scan# 1904
 Delta R.T. 0.000 min
 Lab File: VY004566.D
 Acq: 21 Apr 2021 19:16



Tgt Ion:152 Resp: 7079

Ion	Ratio	Lower	Upper
152	100		
115	61.5	29.6	88.8
150	151.5	0.0	348.4





#80
 1,3,5-Trimethylbenzene
 Concen: 1.99 ug/l
 RT: 12.813 min Scan# 1803
 Delta R.T. -0.006 min
 Lab File: VY004566.D
 Acq: 21 Apr 2021 19:16

Instrument :
 MSVOA_Y
 ClientSampleId :
 SEDGWICK-VOC-7RE

Tgt Ion:105 Resp: 885
 Ion Ratio Lower Upper
 105 100
 120 35.6 24.6 74.0

