

Data Path : Z:\voasrv\HPCHEM1\MSVOA_Y\Data\VY042621\
 Data File : VY004625.D
 Acq On : 26 Apr 2021 13:29
 Operator : SY/MD
 Sample : M2160-01
 Misc : 6.07G/5ML/MSVOA_Y/SOIL
 ALS Vial : 7 Sample Multiplier: 1

Instrument :
 MSVOA_Y
 ClientSampled :

Quant Time: Apr 27 09:32:27 2021
 Quant Method : Z:\voasrv\HPCHEM1\MSVOA_Y\methods\82Y041221S.M
 Quant Title : SW846 8260
 QLast Update : Tue Apr 13 03:38:02 2021
 Response via : Initial Calibration

Compound	R.T.	QIon	Response	Conc	Units	Dev(Min)

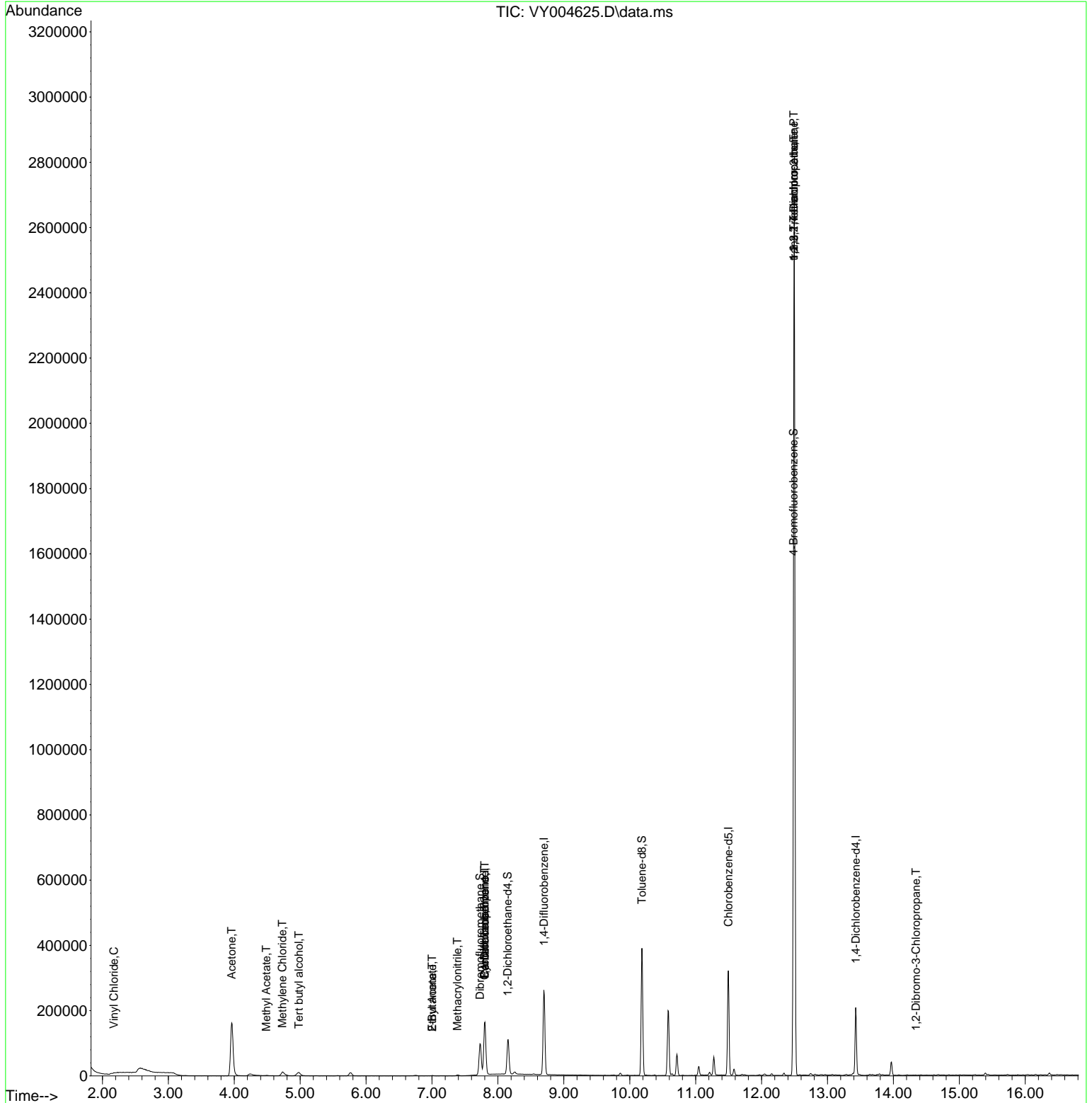
Internal Standards						
1) Pentafluorobenzene	7.801	168	121274	50.00	ug/l	0.00
34) 1,4-Difluorobenzene	8.697	114	208932	50.00	ug/l	0.00
63) Chlorobenzene-d5	11.496	117	162934	50.00	ug/l	0.00
72) 1,4-Dichlorobenzene-d4	13.428	152	47812	50.00	ug/l	0.00
System Monitoring Compounds						
33) 1,2-Dichloroethane-d4	8.149	65	81926	60.80	ug/l	0.00
Spiked Amount	50.000	Range 50 - 163	Recovery =	121.60%		
35) Dibromofluoromethane	7.728	113	66077	56.99	ug/l	0.00
Spiked Amount	50.000	Range 54 - 147	Recovery =	113.98%		
50) Toluene-d8	10.185	98	240388	48.74	ug/l	0.00
Spiked Amount	50.000	Range 49 - 140	Recovery =	97.48%		
62) 4-Bromofluorobenzene	12.483	95	70342	42.03	ug/l	0.00
Spiked Amount	50.000	Range 25 - 144	Recovery =	84.06%		
Target Compounds						
						Qvalue
4) Vinyl Chloride	2.174	62	2522	1.47	ug/l #	43
11) Tert butyl alcohol	4.979	59	21472	161.70	ug/l	100
16) Acetone	3.960	43	290097	1078.08	ug/l	96
18) Methyl Acetate	4.485	43	1690	1.80	ug/l #	83
20) Methylene Chloride	4.729	84	7614	5.85	ug/l	95
25) 2-Butanone	7.003	43	1896	3.69	ug/l	91
31) Cyclohexane	7.795	56	3128	1.27	ug/l #	1
36) 1,1-Dichloropropene	7.795	75	12689	6.11	ug/l #	51
37) Ethyl Acetate	7.003	43	1896	1.42	ug/l #	70
38) Carbon Tetrachloride	7.801	117	12012	6.69	ug/l #	16
41) Methacrylonitrile	7.387	41	1271	1.57	ug/l #	100
75) 1,1,2,2-Tetrachloroethane	12.489	83	911	1.30	ug/l #	1
76) 1,2,3-Trichloropropane	12.489	75	60204	117.32	ug/l #	100
81) trans-1,4-Dichloro-2-b...	12.489	75	60204	209.88	ug/l #	18
92) 1,2-Dibromo-3-Chloropr...	14.343	75	172	1.37	ug/l #	2

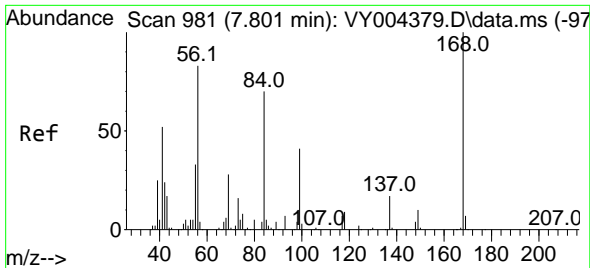
(#) = qualifier out of range (m) = manual integration (+) = signals summed

Data Path : Z:\voasrv\HPCHEM1\MSVOA_Y\Data\VY042621\
 Data File : VY004625.D
 Acq On : 26 Apr 2021 13:29
 Operator : SY/MD
 Sample : M2160-01
 Misc : 6.07G/5ML/MSVOA_Y/SOIL
 ALS Vial : 7 Sample Multiplier: 1

Instrument :
 MSVOA_Y
 ClientSampleId :

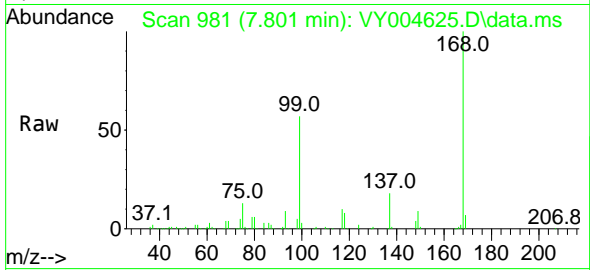
Quant Time: Apr 27 09:32:27 2021
 Quant Method : Z:\voasrv\HPCHEM1\MSVOA_Y\methods\82Y041221S.M
 Quant Title : SW846 8260
 QLast Update : Tue Apr 13 03:38:02 2021
 Response via : Initial Calibration



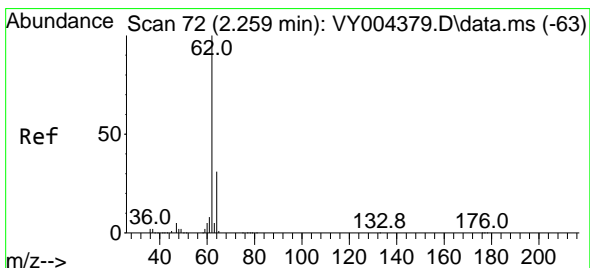
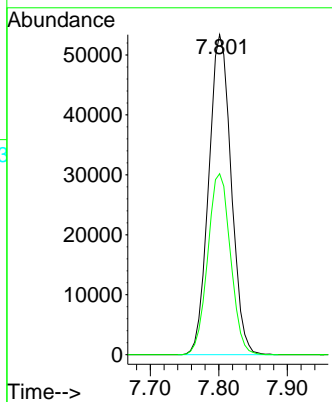
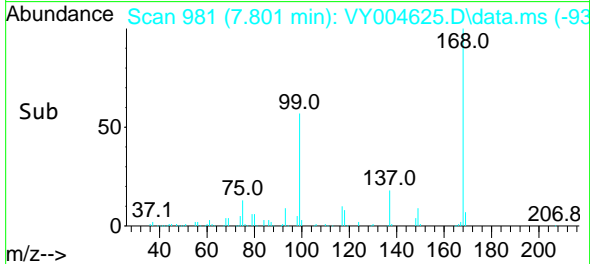


#1
 Pentafluorobenzene
 Concen: 50.00 ug/l
 RT: 7.801 min Scan# 981
 Delta R.T. 0.000 min
 Lab File: VY004625.D
 Acq: 26 Apr 2021 13:29

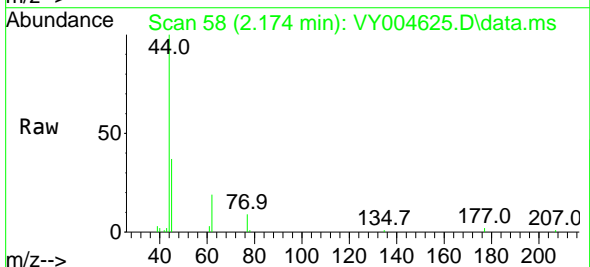
Instrument :
 MSVOA_Y
 ClientSampled :



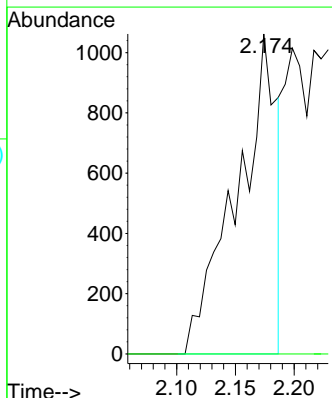
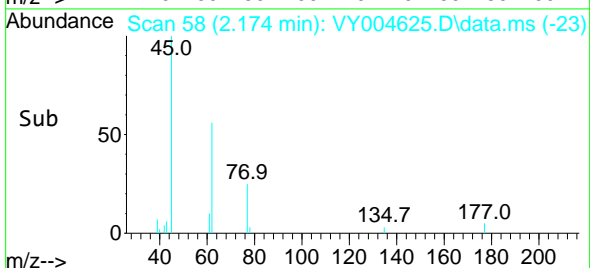
Tgt Ion:168 Resp: 121274
 Ion Ratio Lower Upper
 168 100
 99 56.6 45.5 68.3

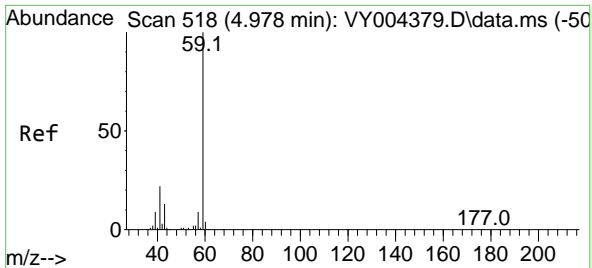


#4
 Vinyl Chloride
 Concen: 1.47 ug/l
 RT: 2.174 min Scan# 58
 Delta R.T. -0.085 min
 Lab File: VY004625.D
 Acq: 26 Apr 2021 13:29



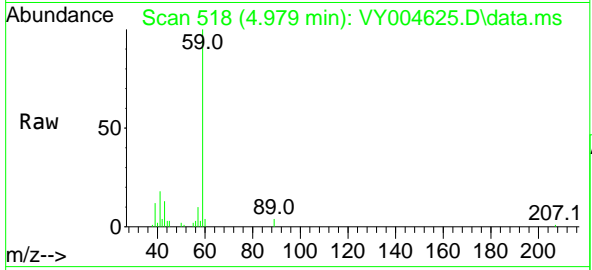
Tgt Ion: 62 Resp: 2522
 Ion Ratio Lower Upper
 62 100
 64 0.0 25.1 37.7#



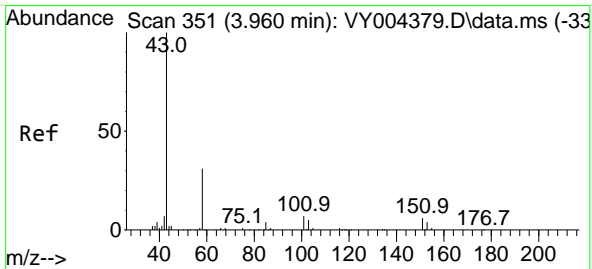
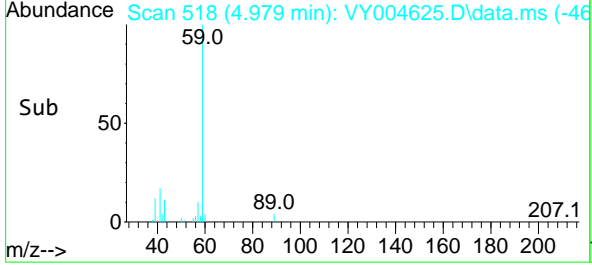
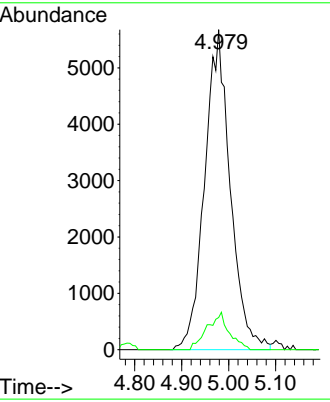


#11
 Tert butyl alcohol
 Concen: 161.70 ug/l
 RT: 4.979 min Scan# 518
 Delta R.T. 0.000 min
 Lab File: VY004625.D
 Acq: 26 Apr 2021 13:29

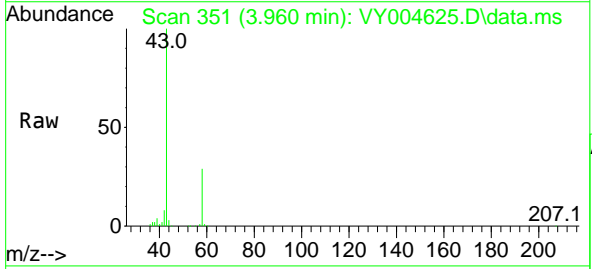
Instrument :
 MSVOA_Y
 ClientSampled :



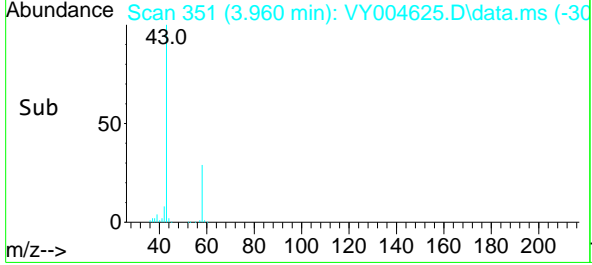
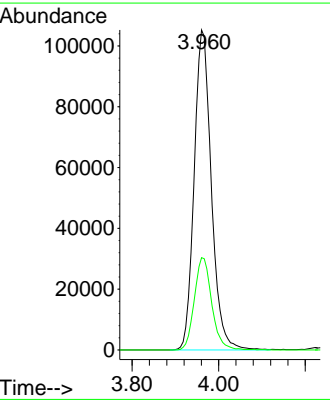
Tgt Ion: 59 Resp: 21472
 Ion Ratio Lower Upper
 59 100
 57 10.0 8.1 12.1

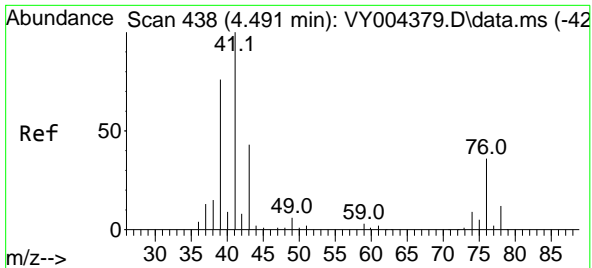


#16
 Acetone
 Concen: 1078.08 ug/l
 RT: 3.960 min Scan# 351
 Delta R.T. 0.000 min
 Lab File: VY004625.D
 Acq: 26 Apr 2021 13:29



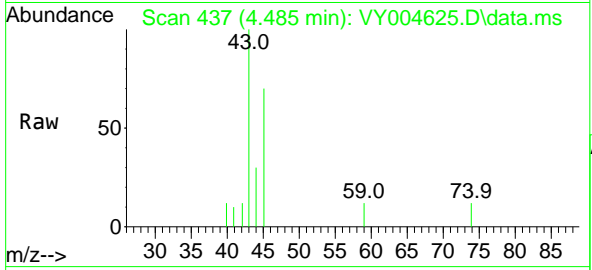
Tgt Ion: 43 Resp: 290097
 Ion Ratio Lower Upper
 43 100
 58 28.9 24.6 37.0



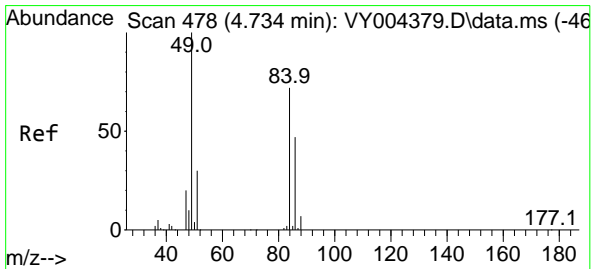
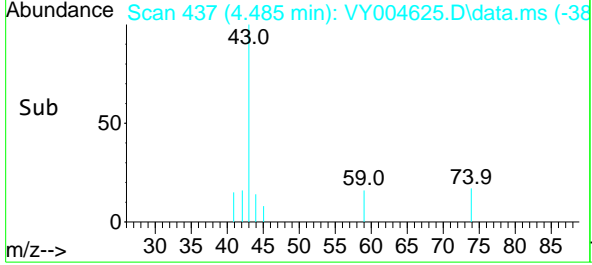
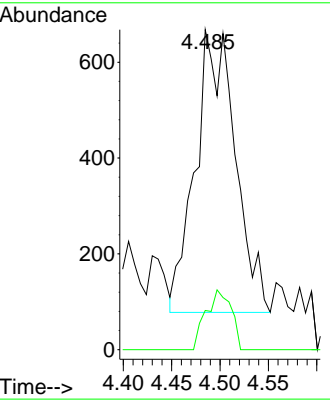


#18
 Methyl Acetate
 Concen: 1.80 ug/l
 RT: 4.485 min Scan# 437
 Delta R.T. -0.006 min
 Lab File: VY004625.D
 Acq: 26 Apr 2021 13:29

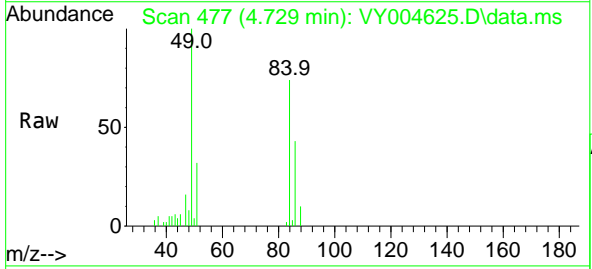
Instrument :
 MSVOA_Y
 ClientSampled :



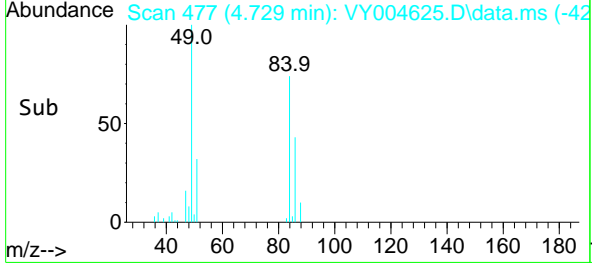
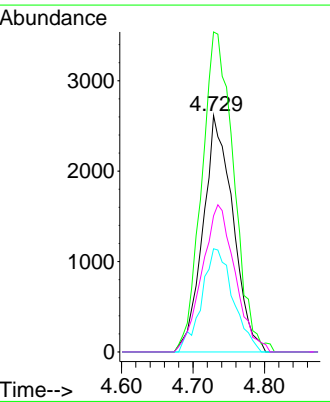
Tgt Ion: 43 Resp: 1690
 Ion Ratio Lower Upper
 43 100
 74 13.4 17.2 25.8#

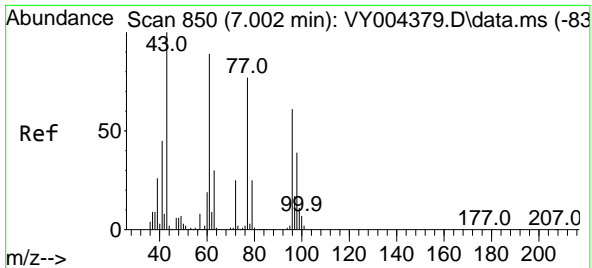


#20
 Methylene Chloride
 Concen: 5.85 ug/l
 RT: 4.729 min Scan# 477
 Delta R.T. -0.006 min
 Lab File: VY004625.D
 Acq: 26 Apr 2021 13:29



Tgt Ion: 84 Resp: 7614
 Ion Ratio Lower Upper
 84 100
 49 135.3 111.2 166.8
 51 43.7 33.4 50.2
 86 57.6 52.7 79.1

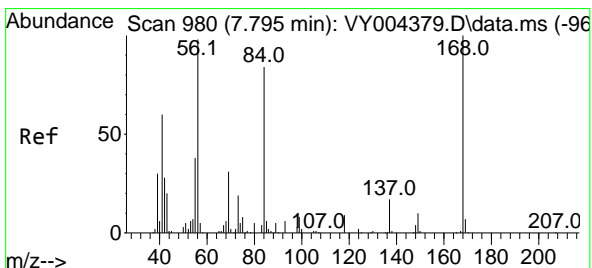
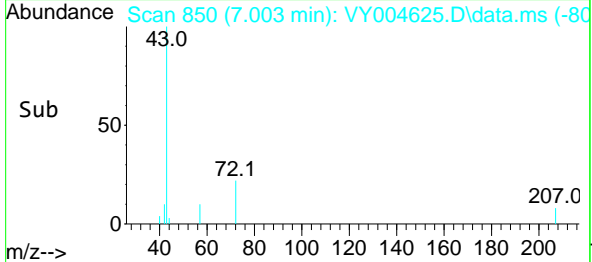
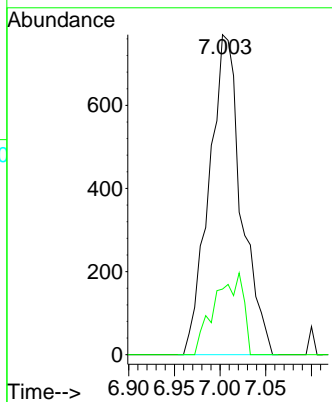
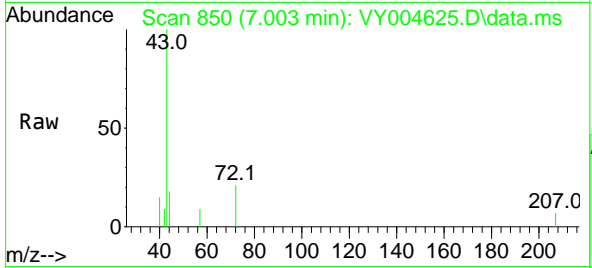




#25
 2-Butanone
 Concen: 3.69 ug/l
 RT: 7.003 min Scan# 850
 Delta R.T. 0.000 min
 Lab File: VY004625.D
 Acq: 26 Apr 2021 13:29

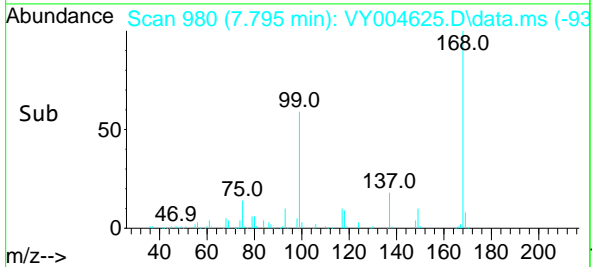
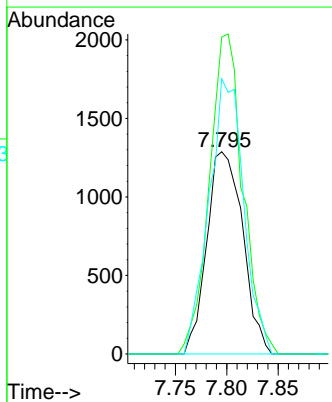
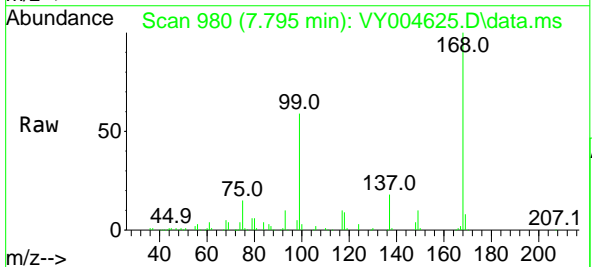
Instrument :
 MSVOA_Y
 ClientSampled :

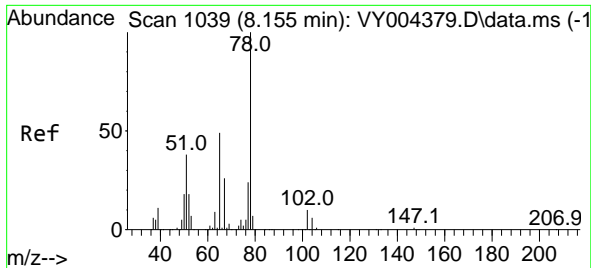
Tgt Ion: 43 Resp: 1896
 Ion Ratio Lower Upper
 43 100
 72 20.5 20.2 30.2



#31
 Cyclohexane
 Concen: 1.27 ug/l
 RT: 7.795 min Scan# 980
 Delta R.T. 0.000 min
 Lab File: VY004625.D
 Acq: 26 Apr 2021 13:29

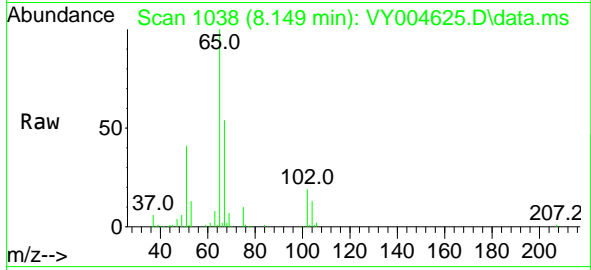
Tgt Ion: 56 Resp: 3128
 Ion Ratio Lower Upper
 56 100
 69 156.8 25.8 38.6#
 84 136.1 68.2 102.4#



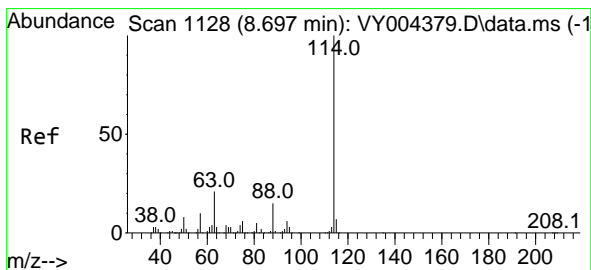
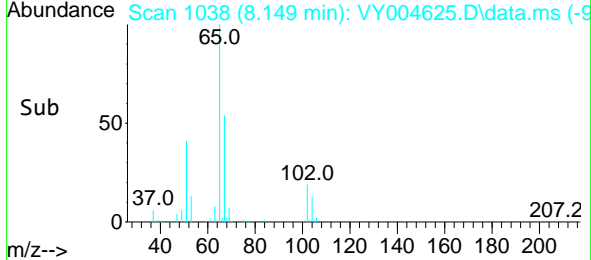
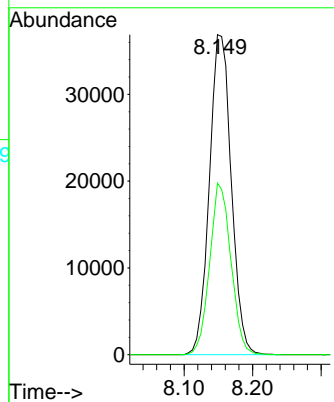


#33
 1,2-Dichloroethane-d4
 Concen: 60.80 ug/l
 RT: 8.149 min Scan# 1038
 Delta R.T. -0.006 min
 Lab File: VY004625.D
 Acq: 26 Apr 2021 13:29

Instrument :
 MSVOA_Y
 ClientSampled :

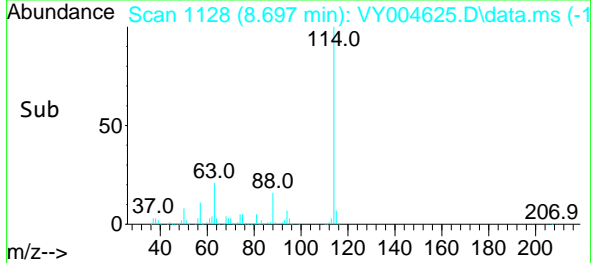
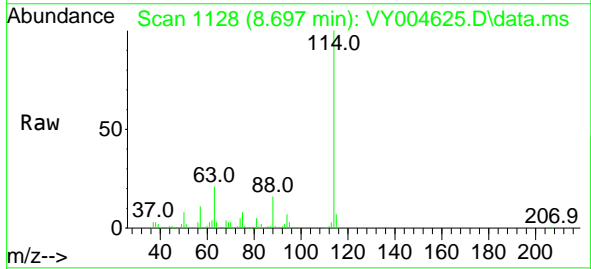
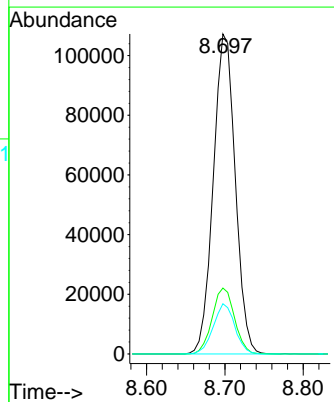


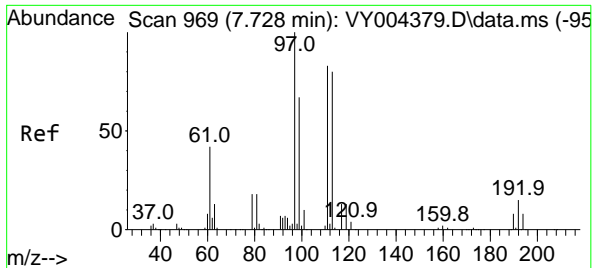
Tgt Ion: 65 Resp: 81926
 Ion Ratio Lower Upper
 65 100
 67 52.0 0.0 106.4



#34
 1,4-Difluorobenzene
 Concen: 50.00 ug/l
 RT: 8.697 min Scan# 1128
 Delta R.T. 0.000 min
 Lab File: VY004625.D
 Acq: 26 Apr 2021 13:29

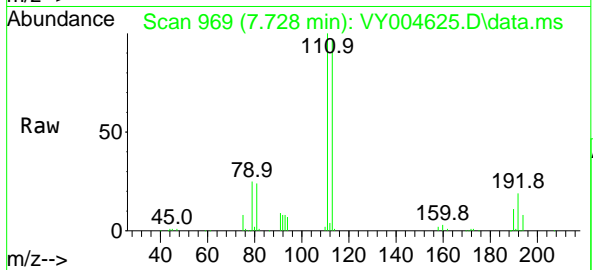
Tgt Ion:114 Resp: 208932
 Ion Ratio Lower Upper
 114 100
 63 20.6 0.0 42.4
 88 15.7 0.0 30.8



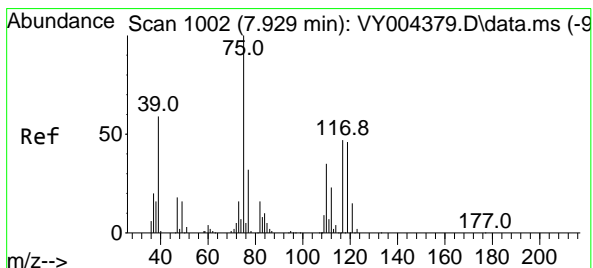
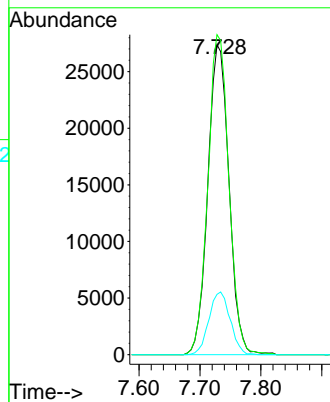
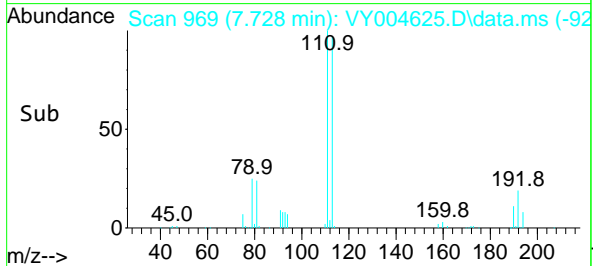


#35
 Dibromofluoromethane
 Concen: 56.99 ug/l
 RT: 7.728 min Scan# 969
 Delta R.T. 0.000 min
 Lab File: VY004625.D
 Acq: 26 Apr 2021 13:29

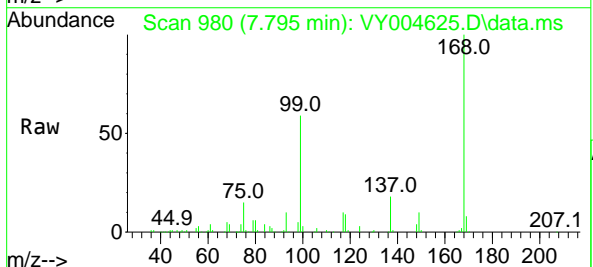
Instrument :
 MSVOA_Y
 ClientSampled :



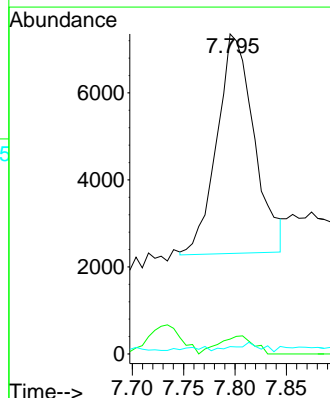
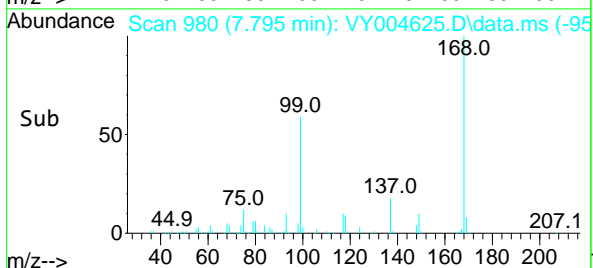
Tgt Ion:113 Resp: 66077
 Ion Ratio Lower Upper
 113 100
 111 102.7 82.6 123.8
 192 20.3 16.1 24.1

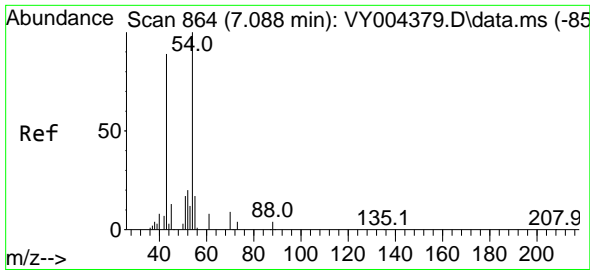


#36
 1,1-Dichloropropene
 Concen: 6.11 ug/l
 RT: 7.795 min Scan# 980
 Delta R.T. -0.134 min
 Lab File: VY004625.D
 Acq: 26 Apr 2021 13:29



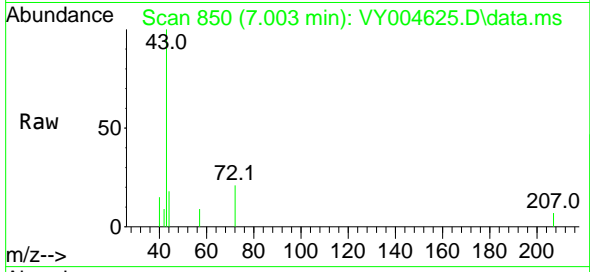
Tgt Ion: 75 Resp: 12689
 Ion Ratio Lower Upper
 75 100
 110 7.6 17.3 51.7#
 77 2.6 24.3 36.5#



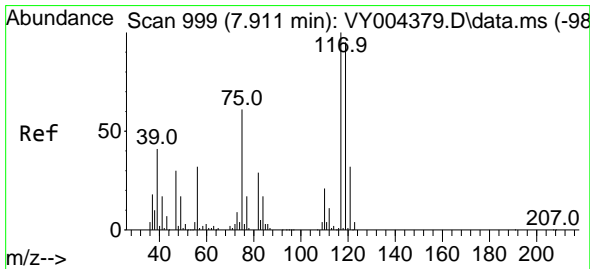
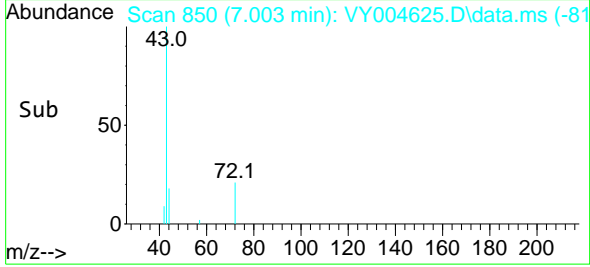
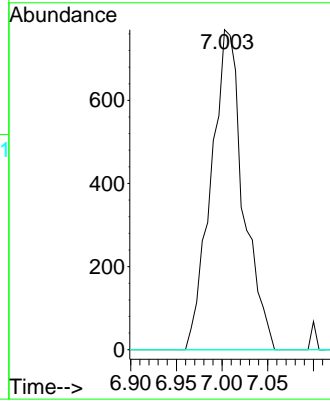


#37
 Ethyl Acetate
 Concen: 1.42 ug/l
 RT: 7.003 min Scan# 850
 Delta R.T. -0.085 min
 Lab File: VY004625.D
 Acq: 26 Apr 2021 13:29

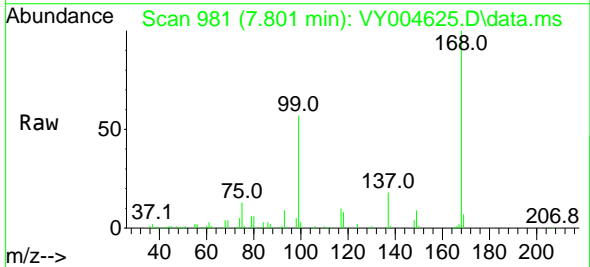
Instrument :
 MSVOA_Y
 ClientSampled :



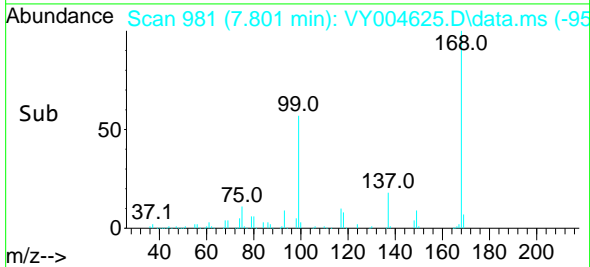
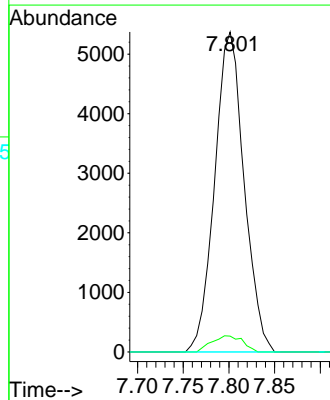
Tgt Ion: 43 Resp: 1896
 Ion Ratio Lower Upper
 43 100
 61 0.0 10.4 15.6#
 70 0.0 7.5 11.3#

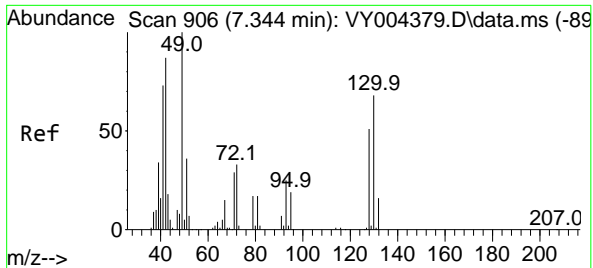


#38
 Carbon Tetrachloride
 Concen: 6.69 ug/l
 RT: 7.801 min Scan# 981
 Delta R.T. -0.109 min
 Lab File: VY004625.D
 Acq: 26 Apr 2021 13:29



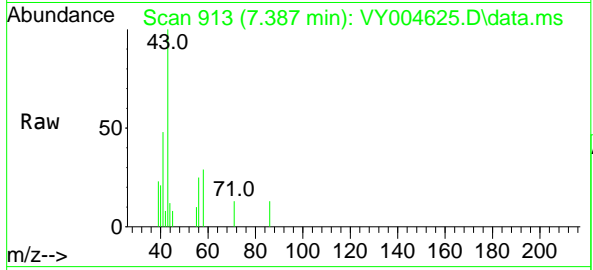
Tgt Ion: 117 Resp: 12012
 Ion Ratio Lower Upper
 117 100
 119 5.0 75.8 113.8#
 121 0.0 25.3 37.9#





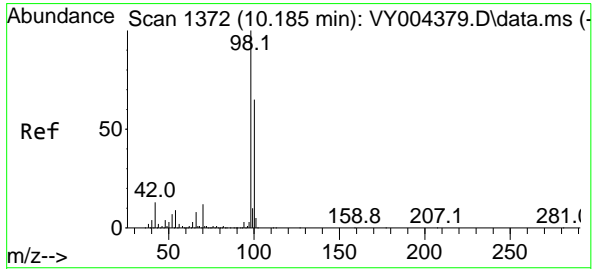
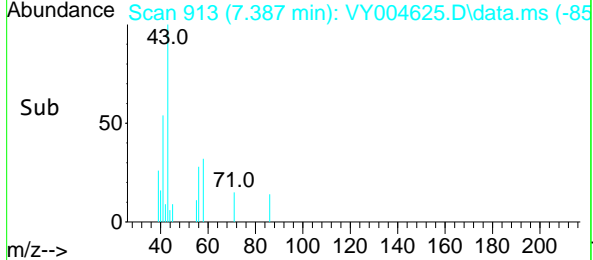
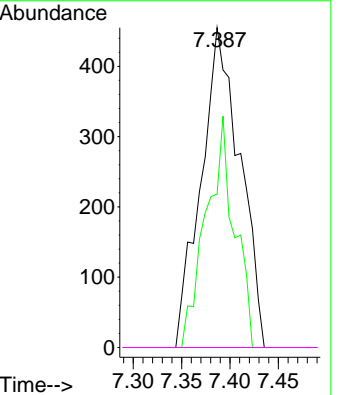
#41
 Methacrylonitrile
 Concen: 1.57 ug/l
 RT: 7.387 min Scan# 913
 Delta R.T. 0.043 min
 Lab File: VY004625.D
 Acq: 26 Apr 2021 13:29

Instrument :
 MSVOA_Y
 ClientSampled :



Tgt Ion: 41 Resp: 1271

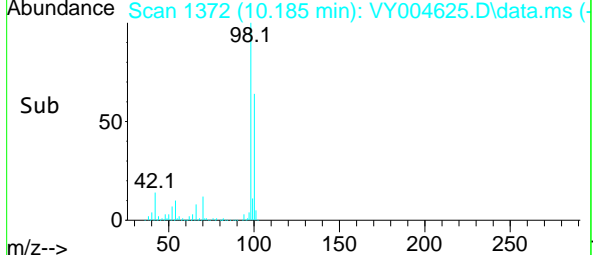
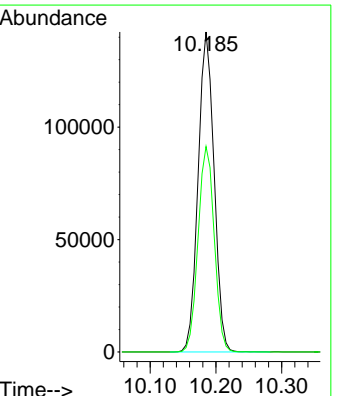
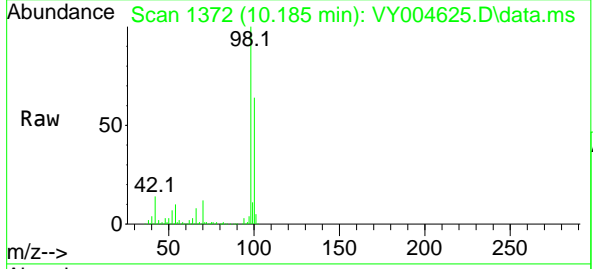
Ion	Ratio	Lower	Upper
41	100		
39	52.7	0.0	0.0#
67	0.0	0.0	0.0
52	0.0	0.0	0.0

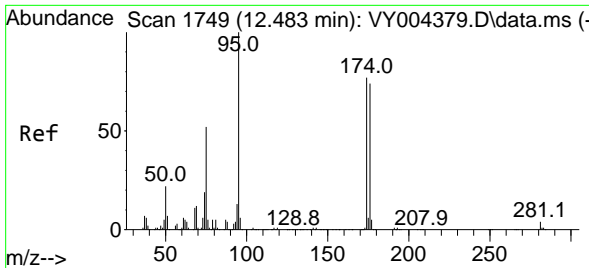


#50
 Toluene-d8
 Concen: 48.74 ug/l
 RT: 10.185 min Scan# 1372
 Delta R.T. 0.000 min
 Lab File: VY004625.D
 Acq: 26 Apr 2021 13:29

Tgt Ion: 98 Resp: 240388

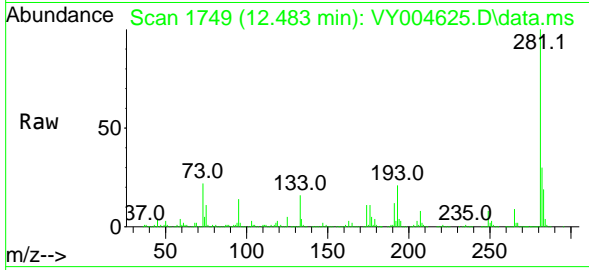
Ion	Ratio	Lower	Upper
98	100		
100	65.0	51.8	77.6





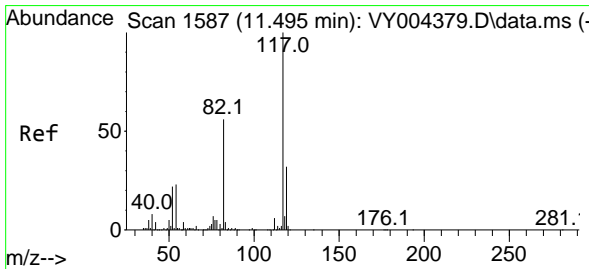
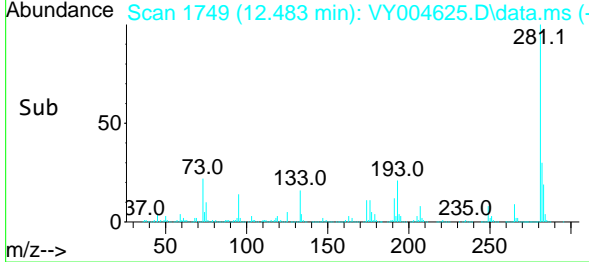
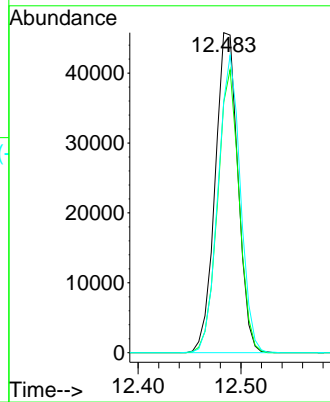
#62
 4-Bromofluorobenzene
 Concen: 42.03 ug/l
 RT: 12.483 min Scan# 1749
 Delta R.T. 0.000 min
 Lab File: VY004625.D
 Acq: 26 Apr 2021 13:29

Instrument :
 MSVOA_Y
 ClientSampled :

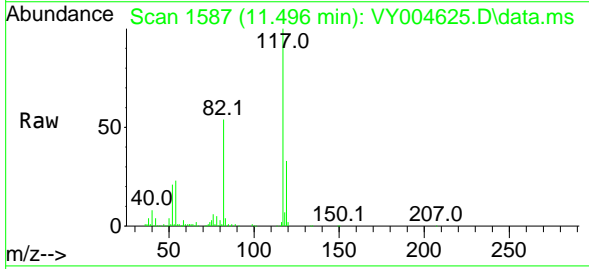


Tgt Ion: 95 Resp: 70342

Ion	Ratio	Lower	Upper
95	100		
174	83.3	0.0	162.4
176	90.9	0.0	156.0

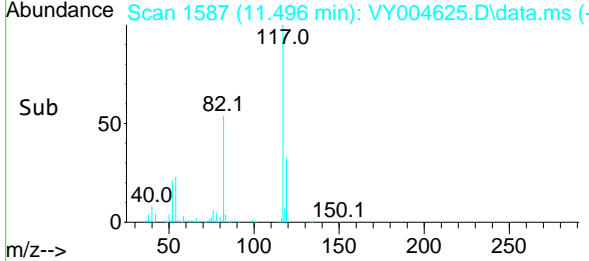
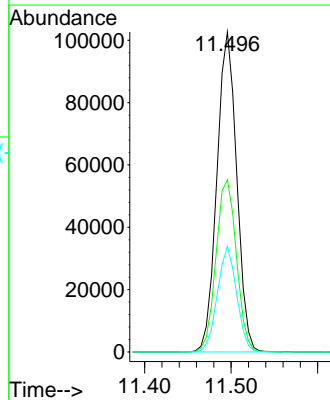


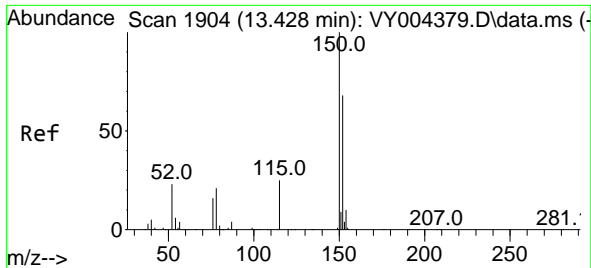
#63
 Chlorobenzene-d5
 Concen: 50.00 ug/l
 RT: 11.496 min Scan# 1587
 Delta R.T. 0.000 min
 Lab File: VY004625.D
 Acq: 26 Apr 2021 13:29



Tgt Ion: 117 Resp: 162934

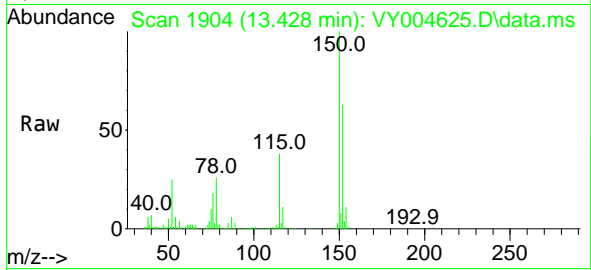
Ion	Ratio	Lower	Upper
117	100		
82	53.8	44.9	67.3
119	33.0	25.4	38.0



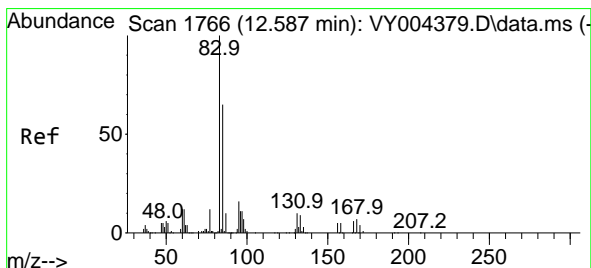
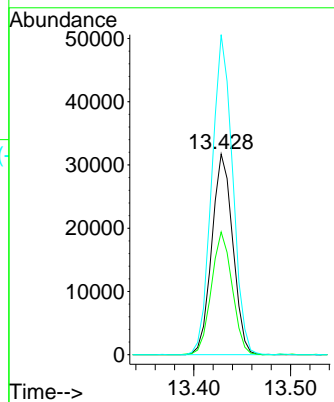
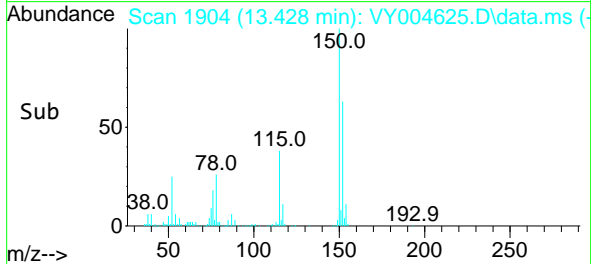


#72
 1,4-Dichlorobenzene-d4
 Concen: 50.00 ug/l
 RT: 13.428 min Scan# 1904
 Delta R.T. 0.000 min
 Lab File: VY004625.D
 Acq: 26 Apr 2021 13:29

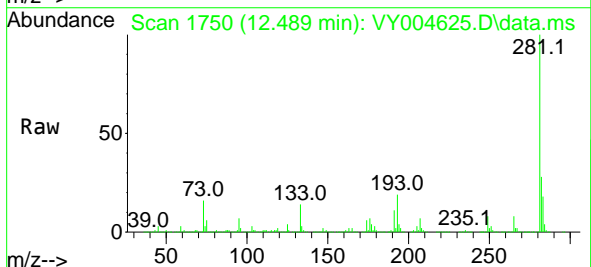
Instrument :
 MSVOA_Y
 ClientSampled :



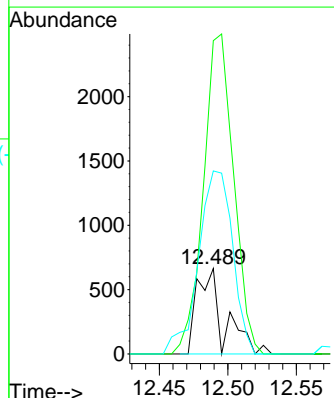
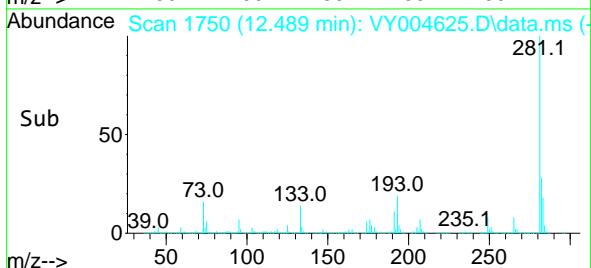
Tgt Ion:152 Resp: 47812
 Ion Ratio Lower Upper
 152 100
 115 60.6 29.6 88.8
 150 159.0 0.0 348.4

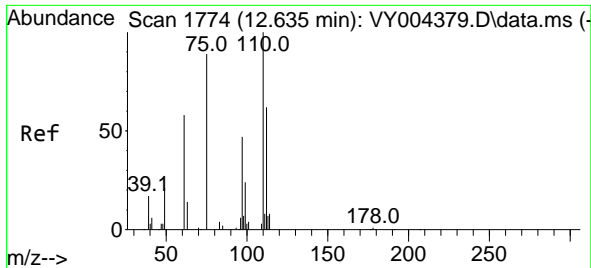


#75
 1,1,2,2-Tetrachloroethane
 Concen: 1.30 ug/l
 RT: 12.489 min Scan# 1750
 Delta R.T. -0.097 min
 Lab File: VY004625.D
 Acq: 26 Apr 2021 13:29



Tgt Ion: 83 Resp: 911
 Ion Ratio Lower Upper
 83 100
 131 419.1 5.1 15.4#
 85 270.9 31.6 94.8#

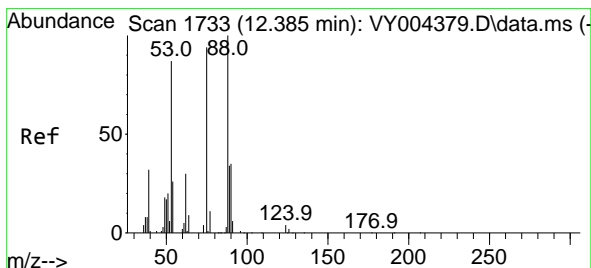
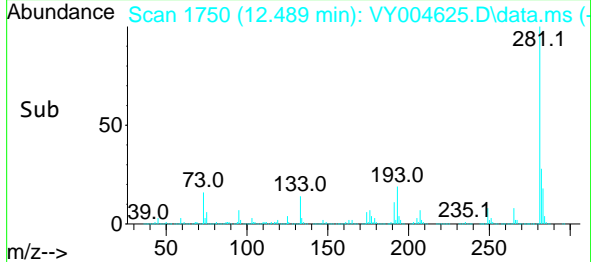
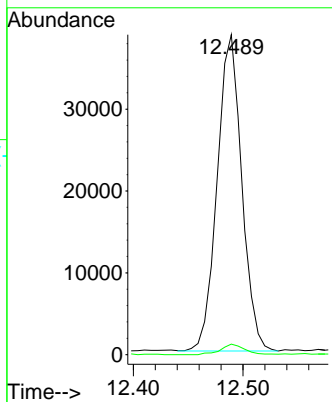
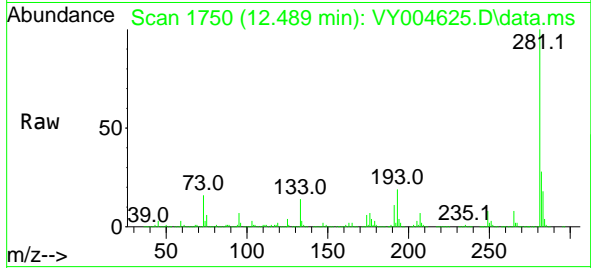




#76
 1,2,3-Trichloropropane
 Concen: 117.32 ug/l
 RT: 12.489 min Scan# 1750
 Delta R.T. -0.146 min
 Lab File: VY004625.D
 Acq: 26 Apr 2021 13:29

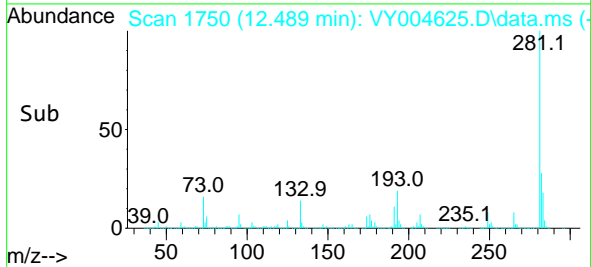
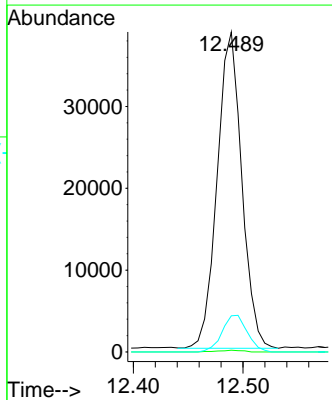
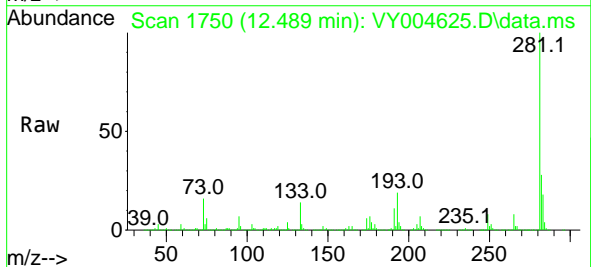
Instrument :
 MSVOA_Y
 ClientSampled :

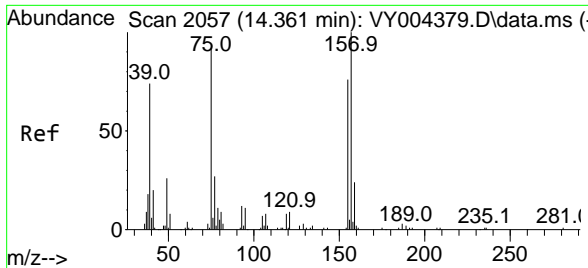
Tgt Ion: 75 Resp: 60204
 Ion Ratio Lower Upper
 75 100
 77 3.3 0.0 0.0#



#81
 trans-1,4-Dichloro-2-butene
 Concen: 209.88 ug/l
 RT: 12.489 min Scan# 1750
 Delta R.T. 0.104 min
 Lab File: VY004625.D
 Acq: 26 Apr 2021 13:29

Tgt Ion: 75 Resp: 60204
 Ion Ratio Lower Upper
 75 100
 53 0.5 75.0 112.6#
 89 11.9 36.1 54.1#





#92
 1,2-Dibromo-3-Chloropropane
 Concen: 1.37 ug/l
 RT: 14.343 min Scan# 2054
 Delta R.T. -0.018 min
 Lab File: VY004625.D
 Acq: 26 Apr 2021 13:29

Instrument :
 MSVOA_Y
 ClientSampled :

Tgt Ion: 75 Resp: 172

Ion	Ratio	Lower	Upper
75	100		
155	0.0	40.6	121.8#
157	0.0	53.0	159.0#

