

Data Path : Z:\voasrv\HPCHEM1\MSVOA_Y\Data\VY042722\
 Data File : VY008515.D
 Acq On : 27 Apr 2022 10:26
 Operator : KP/MD
 Sample : VY0427SBL01
 Misc : 5.00g/5.0mL/MSVOA_Y/SOIL
 ALS Vial : 4 Sample Multiplier: 1

Instrument :
 MSVOA_Y
 ClientSampleId :
 VY0427SBL01

Integration Parameters: RTEINT.P

Integrator: RTE
 Smoothing : ON Filtering: 5
 Sampling : 1 Min Area: 3 % of largest Peak
 Start Thrs: 0.2 Max Peaks: 100
 Stop Thrs : 0 Peak Location: TOP

If leading or trailing edge < 100 prefer < Baseline drop else tangent >
 Peak separation: 5

Method : Z:\voasrv\HPCHEM1\MSVOA_Y\methods\82Y042122S.M
 Title : SW846 8260

Signal : TIC: VY008515.D\data.ms

peak #	R.T. min	first scan	max scan	last scan	PK TY	peak height	corr. area	corr. % max.	% of total
1	6.996	837	849	860	rBV2	5259	20876	4.59%	0.792%
2	7.716	958	967	973	rBV	63556	151354	33.31%	5.744%
3	7.789	973	979	989	rVB	101509	220741	48.58%	8.377%
4	8.136	1023	1036	1046	rBV2	74270	227978	50.18%	8.651%
5	8.691	1117	1127	1139	rBV	159951	314501	69.22%	11.935%
6	9.746	1294	1300	1306	rVB3	3558	7311	1.61%	0.277%
7	10.179	1364	1371	1382	rBV	268163	454354	100.00%	17.242%
8	10.581	1429	1437	1444	rBV2	18027	33383	7.35%	1.267%
9	10.953	1491	1498	1510	rBV	26444	54379	11.97%	2.064%
10	11.319	1552	1558	1567	rVB2	9985	16230	3.57%	0.616%
11	11.489	1579	1586	1597	rBV	253886	416480	91.66%	15.804%
12	12.483	1740	1749	1757	rBV	206423	326869	71.94%	12.404%
13	13.428	1897	1904	1910	rBV	253603	386017	84.96%	14.648%
14	13.971	1986	1993	1998	rVB2	2856	4729	1.04%	0.179%

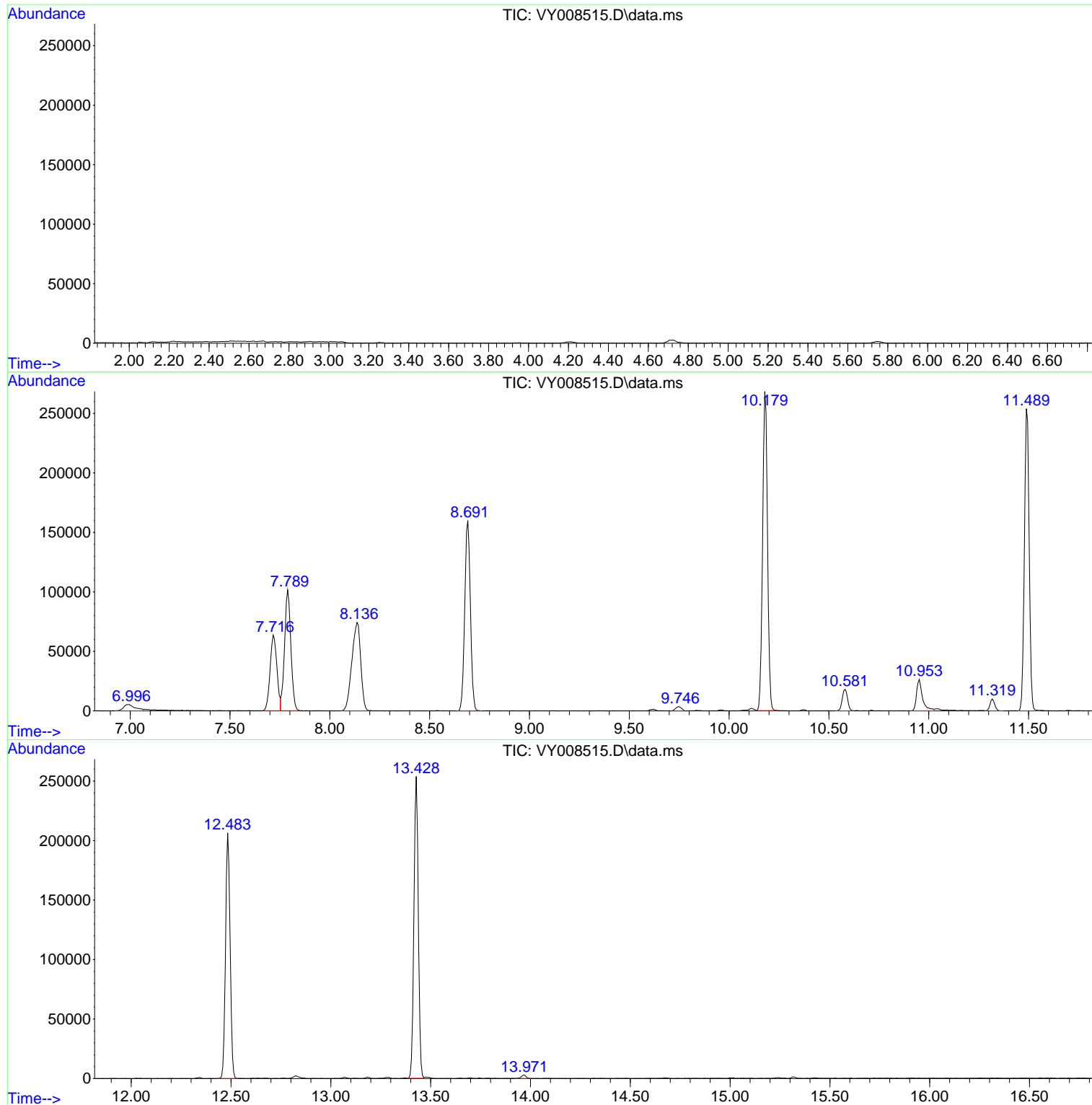
Sum of corrected areas: 2635202

Data Path : Z:\voasrv\HPCHEM1\MSVOA_Y\Data\VY042722\
Data File : VY008515.D
Acq On : 27 Apr 2022 10:26
Operator : KP/MD
Sample : VY0427SBL01
Misc : 5.00g/5.0mL/MSVOA_Y/SOIL
ALS Vial : 4 Sample Multiplier: 1

Instrument :
MSVOA_Y
ClientSampleId :
VY0427SBL01

Quant Method : Z:\voasrv\HPCHEM1\MSVOA_Y\methods\82Y042122S.M
Quant Title : SW846 8260

TIC Library : C:\Database\NIST20.L
TIC Integration Parameters: LSCINT.P



Data Path : Z:\voasrv\HPCHEM1\MSVOA_Y\Data\VY042722\
 Data File : VY008515.D
 Acq On : 27 Apr 2022 10:26
 Operator : KP/MD
 Sample : VY0427SBL01
 Misc : 5.00g/5.0mL/MSVOA_Y/SOIL
 ALS Vial : 4 Sample Multiplier: 1

Instrument :
 MSVOA_Y
 ClientSampleId :
 VY0427SBL01

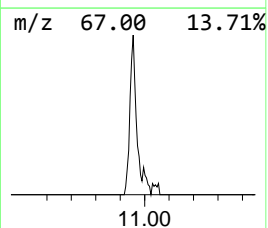
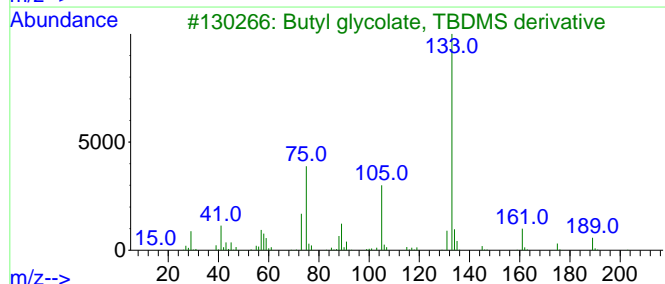
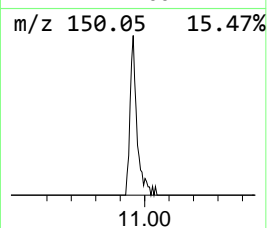
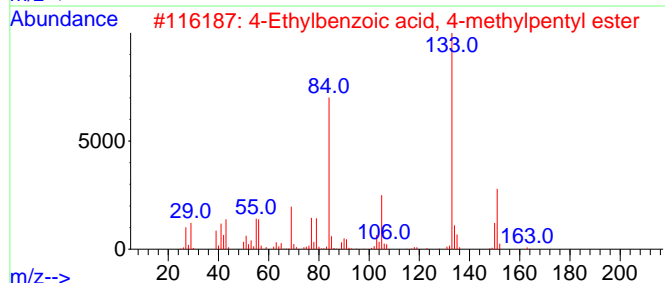
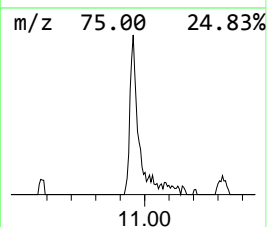
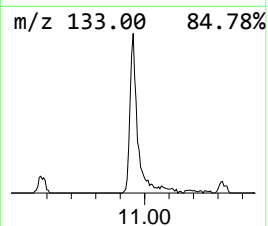
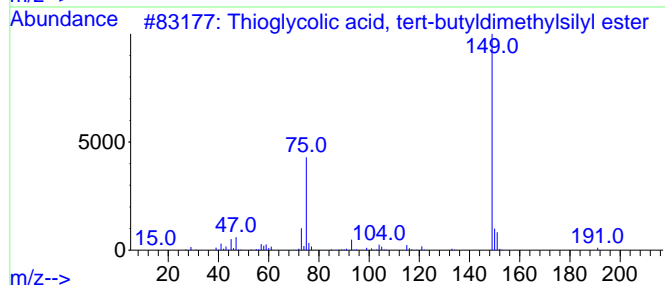
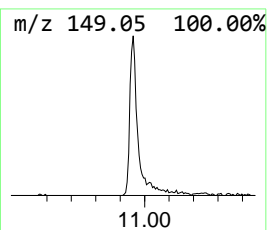
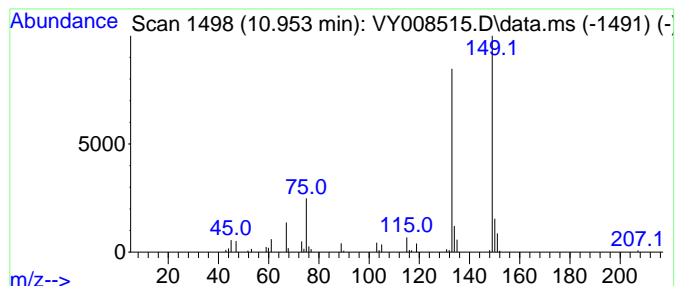
Quant Method : Z:\voasrv\HPCHEM1\MSVOA_Y\methods\82Y042122S.M
 Quant Title : SW846 8260

TIC Library : C:\Database\NIST20.L
 TIC Integration Parameters: LSCINT.P

 Peak Number 1 unknown10.953 Concentration Rank 1

R.T.	EstConc	Area	Relative to ISTD	R.T.
10.953	6.53 ug/l	54379	Chlorobenzene-d5	11.489

Hit#	of	5	Tentative ID	MW	MolForm	CAS#	Qual
1			Thioglycolic acid, tert-butyldim...	206	C8H18O2SSi	1000476-01-2	38
2			4-Ethylbenzoic acid, 4-methylpen...	234	C15H22O2	1000293-49-7	25
3			Butyl glycolate, TBDMS derivative	246	C12H26O3Si	1000366-87-5	23
4			4-Ethylbenzoic acid, ethyl ester	178	C11H14O2	036207-13-3	23
5			Butyl glycolate, (3-cyanopropyl)...	257	C12H23NO3Si	1010376-00-0	23



Data Path : Z:\voasrv\HPCHEM1\MSVOA_Y\Data\VY042722\
Data File : VY008515.D
Acq On : 27 Apr 2022 10:26
Operator : KP/MD
Sample : VY0427SBL01
Misc : 5.00g/5.0mL/MSVOA_Y/SOIL
ALS Vial : 4 Sample Multiplier: 1

Instrument :
MSVOA_Y
ClientSampleId :
VY0427SBL01

Quant Method : Z:\voasrv\HPCHEM1\MSVOA_Y\methods\82Y042122S.M
Quant Title : SW846 8260

TIC Library : C:\Database\NIST0.L
TIC Integration Parameters: LSCINT.P

TIC Top Hit name	RT	EstConc	Units	Response	--Internal Standard--			
					#	RT	Resp	Conc
unknown10.953	10.953	6.5	ug/l	54379	3	11.489	416480	50.0