

Data Path : Z:\voasrv\HPCHEM1\MSVOA\_Y\Data\VY042722\  
 Data File : VY008525.D  
 Acq On : 27 Apr 2022 14:24  
 Operator : KP/MD  
 Sample : N2577-03  
 Misc : 6.86g/5.0mL/MSVOA\_Y/SOIL  
 ALS Vial : 14 Sample Multiplier: 1

Instrument :  
 MSVOA\_Y  
 ClientSampleId :  
 GT-06-(8.5-10)

Integration Parameters: RTEINT.P

Integrator: RTE  
 Smoothing : ON  
 Sampling : 1  
 Start Thrs : 0.2  
 Stop Thrs : 0

Filtering: 5  
 Min Area: 3 % of largest Peak  
 Max Peaks: 100  
 Peak Location: TOP

If leading or trailing edge < 100 prefer < Baseline drop else tangent >  
 Peak separation: 5

Method : Z:\voasrv\HPCHEM1\MSVOA\_Y\methods\82Y042122S.M  
 Title : SW846 8260

Signal : TIC: VY008525.D\data.ms

peak #	R.T. min	first scan	max scan	last scan	PK TY	peak height	corr. area	corr. % max.	% of total
1	7.795	972	980	987	rBV	407889	1032601	1.49%	0.096%
2	7.886	987	995	1006	rVB	1004088	2837110	4.10%	0.264%
3	8.015	1006	1016	1023	rBV	1150249	3412177	4.93%	0.317%
4	8.283	1049	1060	1067	rBV2	1571854	4513715	6.52%	0.419%
5	8.356	1067	1072	1078	rVV2	1338355	3564360	5.15%	0.331%
6	8.429	1078	1084	1097	rVB	1103093	2845784	4.11%	0.264%
7	9.020	1171	1181	1194	rVB	1136704	3079524	4.45%	0.286%
8	9.197	1194	1210	1216	rBV3	15485635	46310875	66.88%	4.303%
9	9.258	1216	1220	1230	rVB	7814944	17161519	24.78%	1.594%
10	9.380	1235	1240	1245	rBV	819455	1464176	2.11%	0.136%
11	9.472	1245	1255	1270	rVB2	7028806	21354308	30.84%	1.984%
12	9.624	1270	1280	1293	rBV2	8511638	20461271	29.55%	1.901%
13	9.776	1293	1305	1316	rBV	9992237	32098229	46.35%	2.982%
14	9.868	1316	1320	1327	rVB	2037927	4531621	6.54%	0.421%
15	9.953	1327	1334	1338	rBV	8415006	18970762	27.40%	1.763%
16	10.008	1338	1343	1352	rVB	9647708	23144080	33.42%	2.150%
17	10.118	1352	1361	1366	rBV5	1940917	6479952	9.36%	0.602%
18	10.185	1366	1372	1374	rBV2	19301921	32596993	47.07%	3.029%
19	10.368	1389	1402	1413	rVB3	18816933	69246305	100.00%	6.434%
20	10.526	1413	1428	1430	rBV3	20527689	45631914	65.90%	4.240%
21	10.636	1439	1446	1452	rBV	18972268	52123460	75.27%	4.843%
22	10.727	1456	1461	1471	rVB2	10109068	25828882	37.30%	2.400%
23	10.813	1471	1475	1479	rBV2	12854149	28620776	41.33%	2.659%
24	10.923	1488	1493	1497	rBV3	12470056	26991446	38.98%	2.508%
25	11.124	1523	1526	1530	rVB	5229954	7724115	11.15%	0.718%
26	11.209	1538	1540	1545	rVB3	5896069	6302685	9.10%	0.586%
27	11.404	1567	1572	1576	rBV	6983446	16217464	23.42%	1.507%
28	11.557	1591	1597	1599	rBV2	5671065	10991817	15.87%	1.021%
29	11.599	1599	1604	1607	rBV	8250613	14276080	20.62%	1.326%
30	11.648	1607	1612	1615	rBV2	10219936	22857119	33.01%	2.124%
31	11.831	1640	1642	1645	rVB	13799135	12874925	18.59%	1.196%
32	11.867	1645	1648	1652	rBV	5620837	10361588	14.96%	0.963%
33	11.922	1653	1657	1660	rBV	8568280	15844694	22.88%	1.472%
34	12.002	1667	1670	1672	rBV3	6646808	7204421	10.40%	0.669%
35	12.081	1679	1683	1687	rBV3	5086358	13155808	19.00%	1.222%
36	12.166	1694	1697	1699	rBV	3252401	3440124	4.97%	0.320%

Data Path : Z:\voasrv\HPCHEM1\MSVOA\_Y\Data\VY042722\  
 Data File : VY008525.D  
 Acq On : 27 Apr 2022 14:24  
 Operator : KP/MD  
 Sample : N2577-03  
 Misc : 6.86g/5.0mL/MSVOA\_Y/SOIL  
 ALS Vial : 14 Sample Multiplier: 1

Instrument :  
 MSVOA\_Y  
 ClientSampleId :  
 GT-06-(8.5-10)

Integration Parameters: RTEINT.P

Integrator: RTE  
 Smoothing : ON Filtering: 5  
 Sampling : 1 Min Area: 3 % of largest Peak  
 Start Thrs: 0.2 Max Peaks: 100  
 Stop Thrs : 0 Peak Location: TOP

If leading or trailing edge < 100 prefer < Baseline drop else tangent >  
 Peak separation: 5

Method : Z:\voasrv\HPCHEM1\MSVOA\_Y\methods\82Y042122S.M  
 Title : SW846 8260

37	12.197	1699	1702	1705	rBV2	5832051	9633721	13.91%	0.895%
38	12.337	1720	1725	1728	rBV4	5932818	12681512	18.31%	1.178%
39	12.514	1749	1754	1758	rVB3	17711031	32962611	47.60%	3.063%
40	12.587	1758	1766	1771	rBV6	20805045	68267666	98.59%	6.343%
41	12.672	1778	1780	1782	rBV2	4106090	4528549	6.54%	0.421%
42	12.697	1782	1784	1787	rVB	18940330	16322128	23.57%	1.516%
43	12.751	1787	1793	1797	rBV5	18081622	51295459	74.08%	4.766%
44	12.794	1798	1800	1803	rBV4	4326798	4186716	6.05%	0.389%
45	12.849	1807	1809	1811	rBV3	3653956	3250953	4.69%	0.302%
46	12.965	1823	1828	1832	rVB3	13059151	21859666	31.57%	2.031%
47	13.008	1832	1835	1838	rBV2	7856921	11688205	16.88%	1.086%
48	13.050	1838	1842	1853	rVB5	16415728	45828342	66.18%	4.258%
49	13.148	1854	1858	1860	rBV3	6482619	9650476	13.94%	0.897%
50	13.178	1860	1863	1866	rBV	4099431	4636055	6.70%	0.431%
51	13.264	1873	1877	1881	rVB3	15509874	24996841	36.10%	2.322%
52	13.331	1881	1888	1892	rBV4	15599198	36455076	52.65%	3.387%
53	13.465	1907	1910	1914	rVB4	1671136	2272730	3.28%	0.211%
54	13.507	1914	1917	1919	rBV2	1065360	1477368	2.13%	0.137%
55	13.581	1924	1929	1935	rVV4	4475737	10129152	14.63%	0.941%
56	13.703	1942	1949	1952	rBV2	2704199	5082970	7.34%	0.472%
57	13.757	1952	1958	1963	rVV2	19114500	30398625	43.90%	2.824%
58	13.800	1963	1965	1969	rVB2	1922527	2255406	3.26%	0.210%
59	13.861	1970	1975	1978	rBV4	1755372	3387126	4.89%	0.315%
60	13.977	1990	1994	1999	rVB	4401468	6988003	10.09%	0.649%
61	14.087	2006	2012	2017	rVB4	2722596	4740297	6.85%	0.440%
62	14.141	2017	2021	2027	rVB6	1075195	2297883	3.32%	0.213%
63	14.196	2027	2030	2036	rBV4	487535	845162	1.22%	0.079%
64	14.263	2036	2041	2045	rBV3	2783848	5012418	7.24%	0.466%
65	14.385	2056	2061	2063	rBV	467908	812878	1.17%	0.076%
66	14.428	2063	2068	2072	rVV2	1458834	2567097	3.71%	0.239%
67	14.483	2074	2077	2087	rVB4	526771	1400937	2.02%	0.130%
68	14.678	2104	2109	2115	rVV3	1010896	2027383	2.93%	0.188%
69	14.739	2115	2119	2125	rVB4	461318	830628	1.20%	0.077%

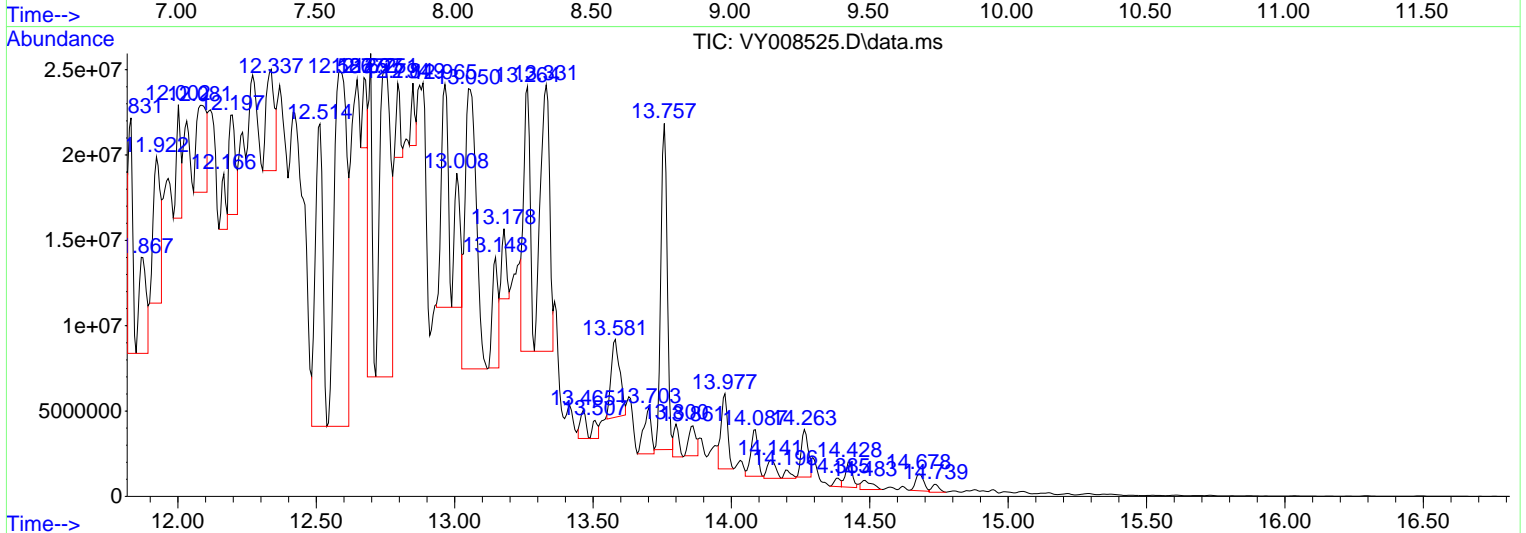
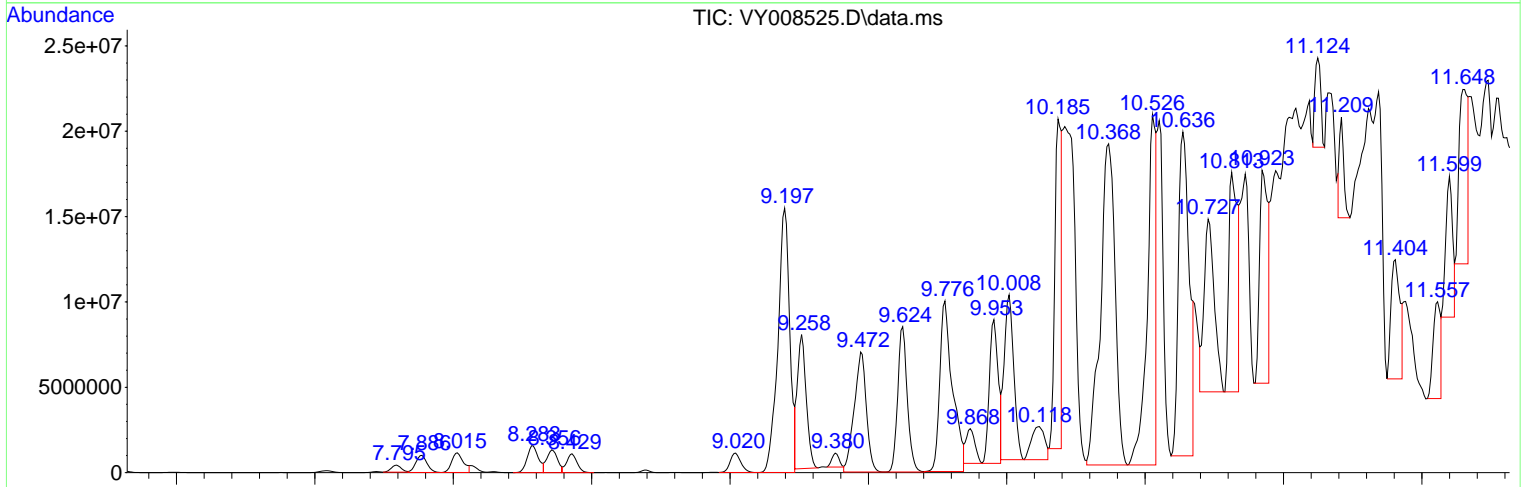
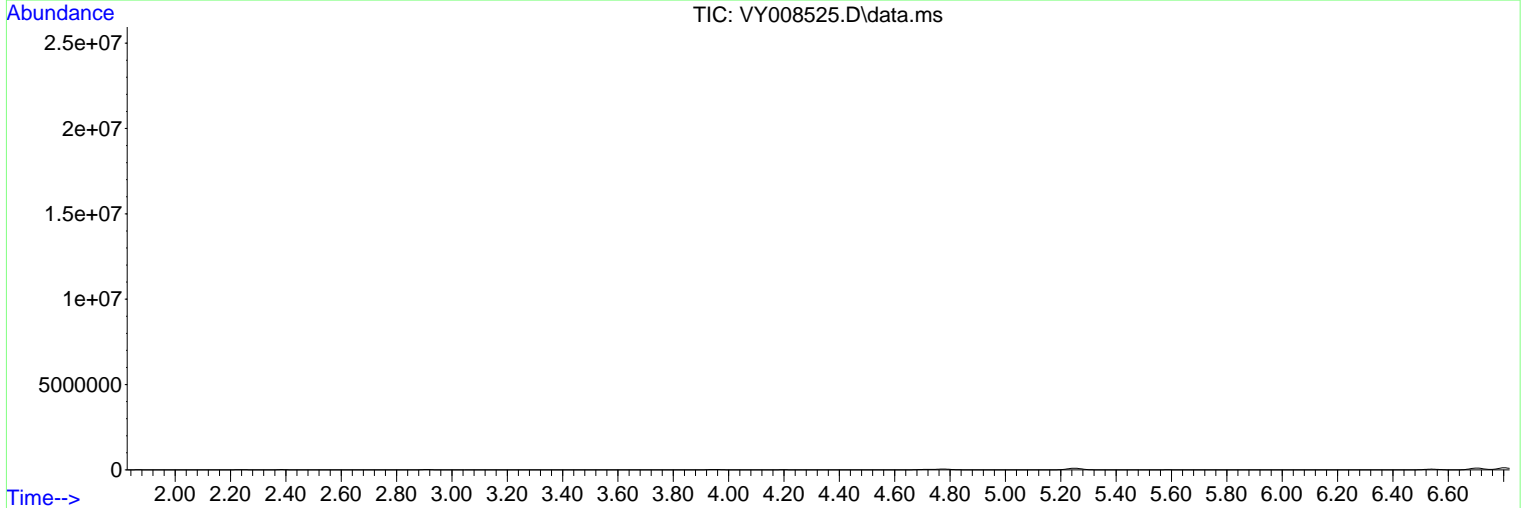
Sum of corrected areas: 1076322719

Data Path : Z:\voasrv\HPCHEM1\MSVOA\_Y\Data\VY042722\  
 Data File : VY008525.D  
 Acq On : 27 Apr 2022 14:24  
 Operator : KP/MD  
 Sample : N2577-03  
 Misc : 6.86g/5.0mL/MSVOA\_Y/SOIL  
 ALS Vial : 14 Sample Multiplier: 1

Instrument :  
 MSVOA\_Y  
 ClientSampleId :  
 GT-06-(8.5-10)

Quant Method : Z:\voasrv\HPCHEM1\MSVOA\_Y\methods\82Y042122S.M  
 Quant Title : SW846 8260

TIC Library : C:\Database\NIST20.L  
 TIC Integration Parameters: LSCINT.P



Data Path : Z:\voasrv\HPCHEM1\MSVOA\_Y\Data\VY042722\  
 Data File : VY008525.D  
 Acq On : 27 Apr 2022 14:24  
 Operator : KP/MD  
 Sample : N2577-03  
 Misc : 6.86g/5.0mL/MSVOA\_Y/SOIL  
 ALS Vial : 14 Sample Multiplier: 1

Instrument :  
 MSVOA\_Y  
 ClientSampleId :  
 GT-06-(8.5-10)

Quant Method : Z:\voasrv\HPCHEM1\MSVOA\_Y\methods\82Y042122S.M  
 Quant Title : SW846 8260

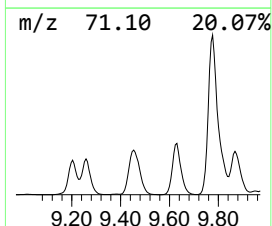
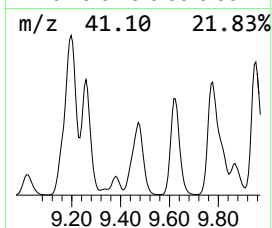
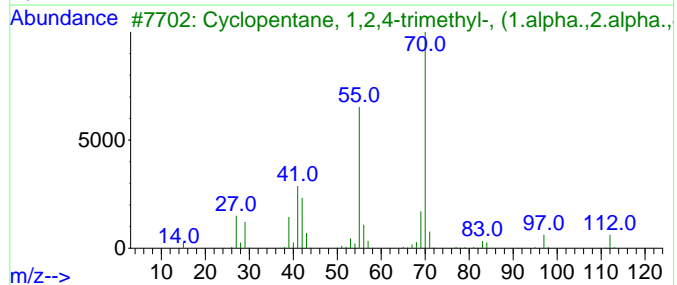
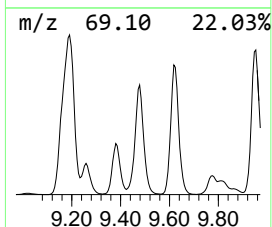
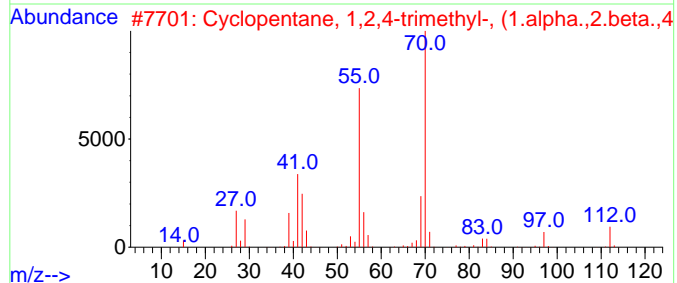
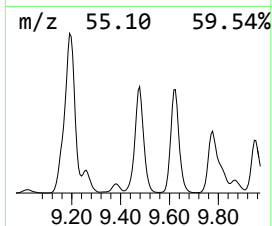
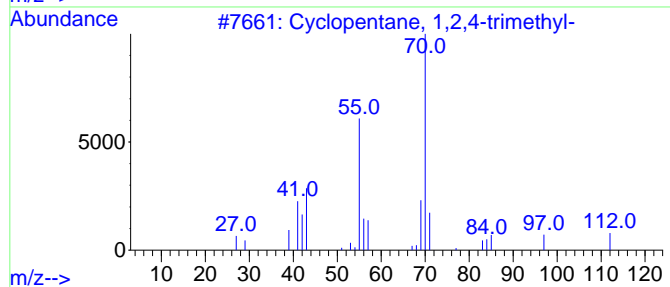
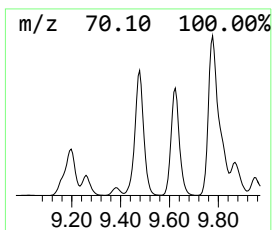
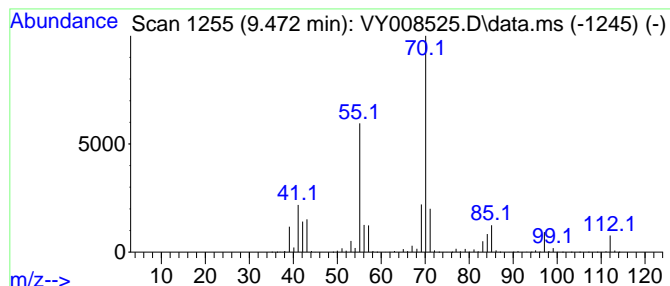
TIC Library : C:\Database\NIST20.L  
 TIC Integration Parameters: LSCINT.P

\*\*\*\*\*  
 Peak Number 1 Cyclopentane, 1,2,4-trimethyl- Concentration Rank 8

R.T.	EstConc	Area	Relative to ISTD	R.T.
9.472	375.19 ug/l	21354300	1,4-Difluorobenzene	8.691

Hit#	of 5	Tentative ID	MW	MolForm	CAS#	Qual
1		Cyclopentane, 1,2,4-trimethyl-	112	C8H16	002815-58-9	94
2		Cyclopentane, 1,2,4-trimethyl-, ...	112	C8H16	016883-48-0	64
3		Cyclopentane, 1,2,4-trimethyl-, ...	112	C8H16	004850-28-6	58
4		Undecane, 3-methylene-	168	C12H24	071138-64-2	56
5		2-Butene, 2-methyl-	70	C5H10	000513-35-9	50



Data Path : Z:\voasrv\HPCHEM1\MSVOA\_Y\Data\VY042722\  
 Data File : VY008525.D  
 Acq On : 27 Apr 2022 14:24  
 Operator : KP/MD  
 Sample : N2577-03  
 Misc : 6.86g/5.0mL/MSVOA\_Y/SOIL  
 ALS Vial : 14 Sample Multiplier: 1

Instrument :  
 MSVOA\_Y  
 ClientSampleId :  
 GT-06-(8.5-10)

Quant Method : Z:\voasrv\HPCHEM1\MSVOA\_Y\methods\82Y042122S.M  
 Quant Title : SW846 8260

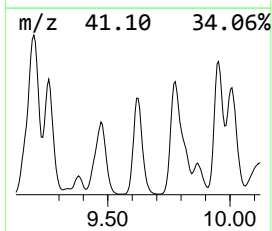
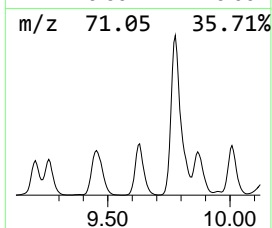
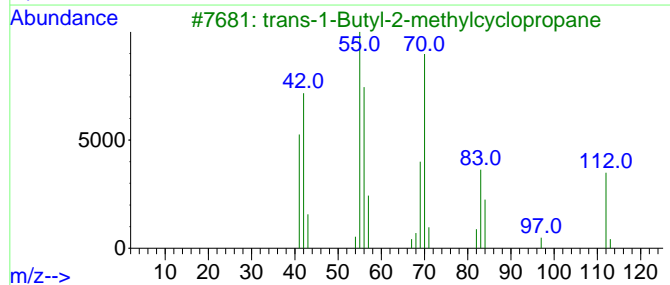
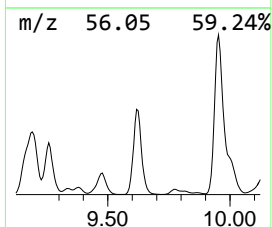
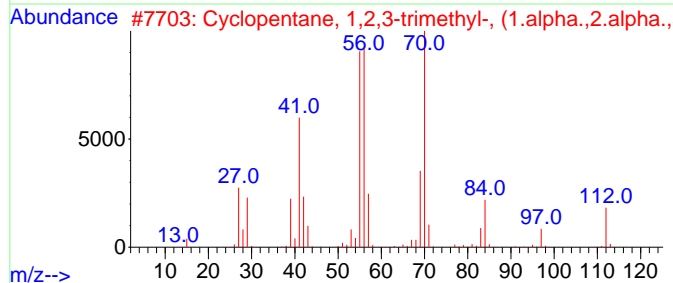
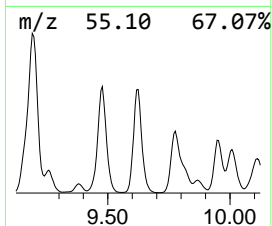
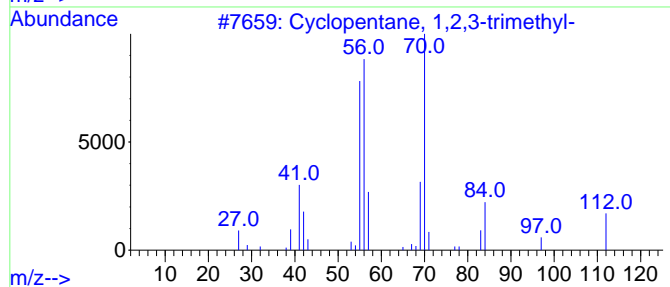
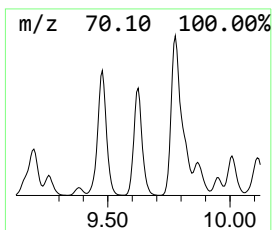
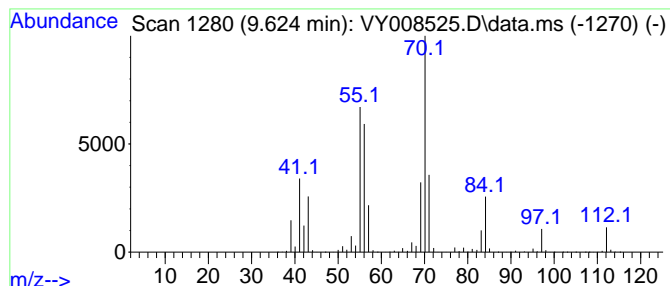
TIC Library : C:\Database\NIST20.L  
 TIC Integration Parameters: LSCINT.P

\*\*\*\*\*  
 Peak Number 2 Cyclopentane, 1,2,3-trimethyl- Concentration Rank 9

R.T.	EstConc	Area	Relative to ISTD	R.T.
9.624	359.50 ug/l	20461300	1,4-Difluorobenzene	8.691

Hit#	of	5	Tentative ID	MW	MolForm	CAS#	Qual
1			Cyclopentane, 1,2,3-trimethyl-	112	C8H16	002815-57-8	90
2			Cyclopentane, 1,2,3-trimethyl-, ...	112	C8H16	015890-40-1	90
3			trans-1-Butyl-2-methylcyclopropane	112	C8H16	038851-70-6	83
4			Cyclopentane, 1,2,3-trimethyl-, ...	112	C8H16	002613-69-6	72
5			Cyclopentane, 1,2,4-trimethyl-, ...	112	C8H16	016883-48-0	52



Data Path : Z:\voasrv\HPCHEM1\MSVOA\_Y\Data\VY042722\  
 Data File : VY008525.D  
 Acq On : 27 Apr 2022 14:24  
 Operator : KP/MD  
 Sample : N2577-03  
 Misc : 6.86g/5.0mL/MSVOA\_Y/SOIL  
 ALS Vial : 14 Sample Multiplier: 1

Instrument :  
 MSVOA\_Y  
 ClientSampleId :  
 GT-06-(8.5-10)

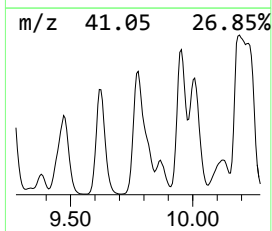
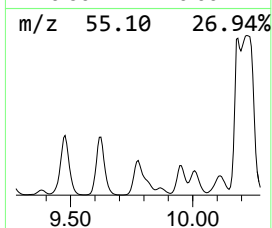
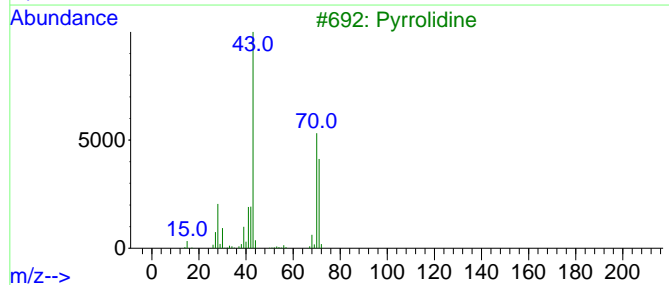
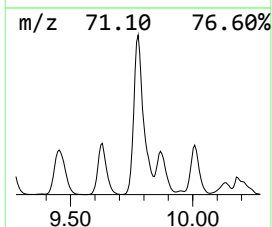
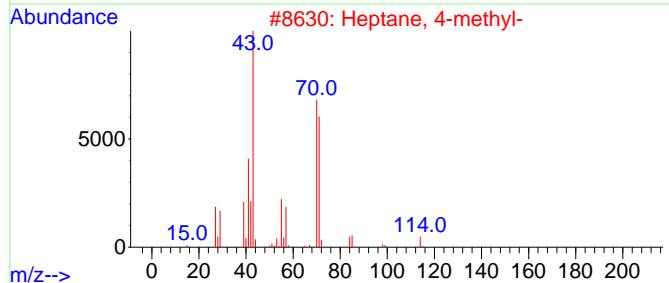
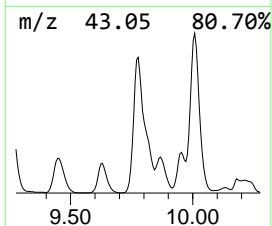
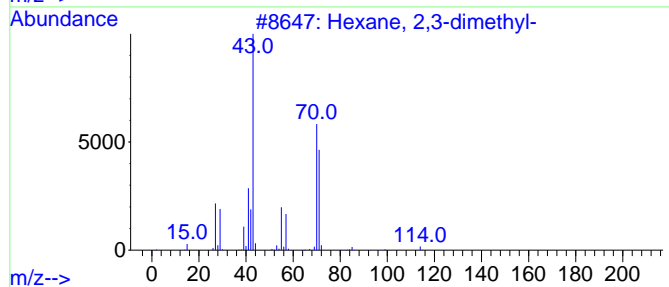
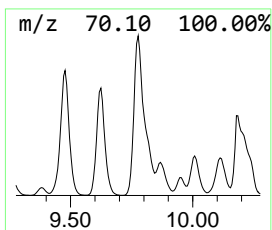
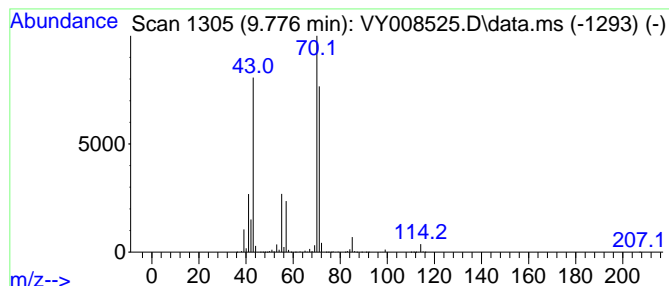
Quant Method : Z:\voasrv\HPCHEM1\MSVOA\_Y\methods\82Y042122S.M  
 Quant Title : SW846 8260

TIC Library : C:\Database\NIST20.L  
 TIC Integration Parameters: LSCINT.P

\*\*\*\*\*  
 Peak Number 3 Hexane, 2,3-dimethyl- Concentration Rank 5

R.T.	EstConc	Area	Relative to ISTD	R.T.
9.776	563.96 ug/l	32098200	1,4-Difluorobenzene	8.691

Hit#	of	Tentative ID	MW	MolForm	CAS#	Qual
1	5	Hexane, 2,3-dimethyl-	114	C8H18	000584-94-1	91
2		Heptane, 4-methyl-	114	C8H18	000589-53-7	83
3		Pyrrolidine	71	C4H9N	000123-75-1	78
4		Pentane, 3-ethyl-	100	C7H16	000617-78-7	78
5		3,4-Diethyl hexane	142	C10H22	019398-77-7	78



Data Path : Z:\voasrv\HPCHEM1\MSVOA\_Y\Data\VY042722\  
 Data File : VY008525.D  
 Acq On : 27 Apr 2022 14:24  
 Operator : KP/MD  
 Sample : N2577-03  
 Misc : 6.86g/5.0mL/MSVOA\_Y/SOIL  
 ALS Vial : 14 Sample Multiplier: 1

Instrument :  
 MSVOA\_Y  
 ClientSampleId :  
 GT-06-(8.5-10)

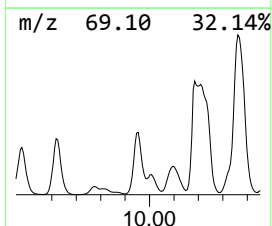
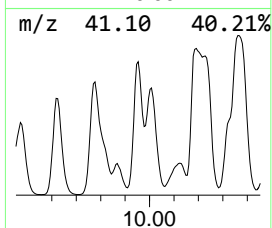
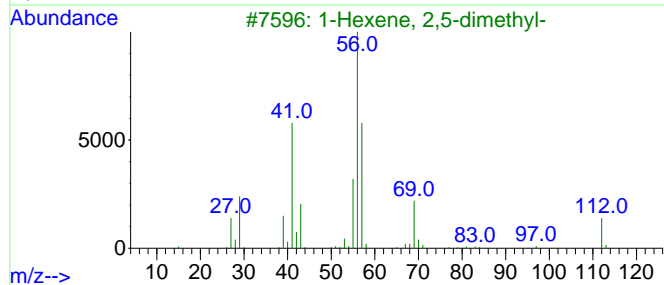
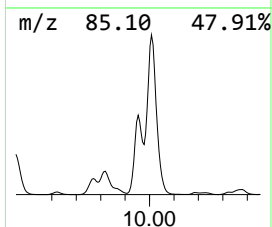
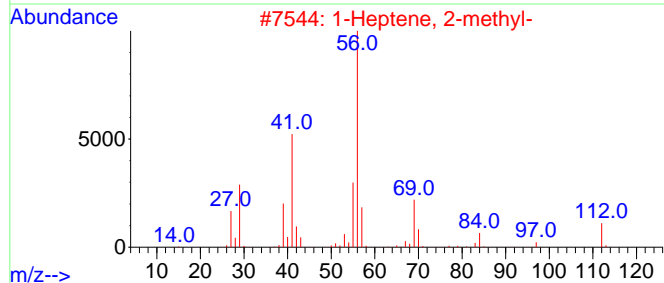
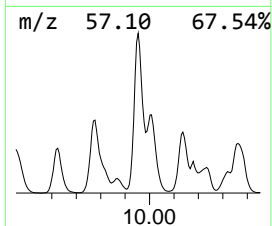
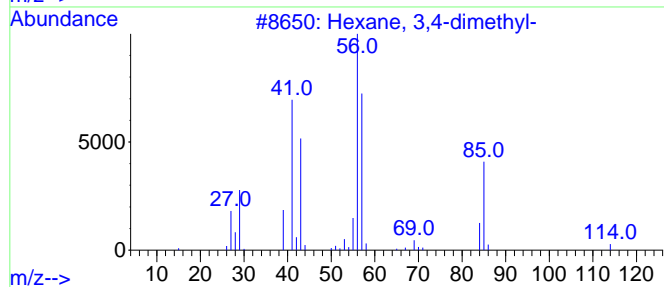
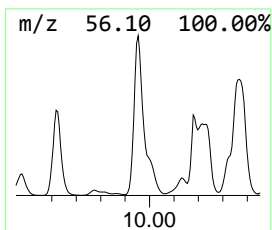
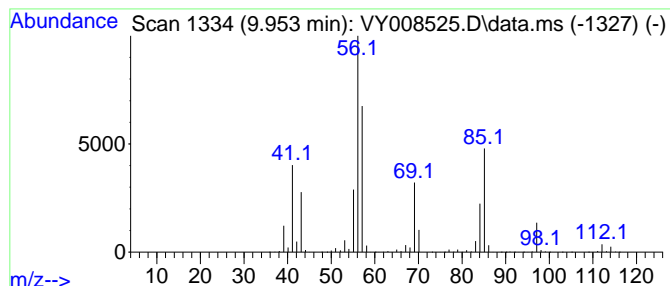
Quant Method : Z:\voasrv\HPCHEM1\MSVOA\_Y\methods\82Y042122S.M  
 Quant Title : SW846 8260

TIC Library : C:\Database\NIST20.L  
 TIC Integration Parameters: LSCINT.P

\*\*\*\*\*  
 Peak Number 4 Hexane, 3,4-dimethyl- Concentration Rank 10

R.T.	EstConc	Area	Relative to ISTD	R.T.
9.953	333.31 ug/l	18970800	1,4-Difluorobenzene	8.691

Hit#	of	5	Tentative ID	MW	MolForm	CAS#	Qual
1			Hexane, 3,4-dimethyl-	114	C8H18	000583-48-2	64
2			1-Heptene, 2-methyl-	112	C8H16	015870-10-7	50
3			1-Hexene, 2,5-dimethyl-	112	C8H16	006975-92-4	46
4			Cyclopentane, methyl-	84	C6H12	000096-37-7	43
5			Cyclohexane	84	C6H12	000110-82-7	38



Data Path : Z:\voasrv\HPCHEM1\MSVOA\_Y\Data\VY042722\  
 Data File : VY008525.D  
 Acq On : 27 Apr 2022 14:24  
 Operator : KP/MD  
 Sample : N2577-03  
 Misc : 6.86g/5.0mL/MSVOA\_Y/SOIL  
 ALS Vial : 14 Sample Multiplier: 1

Instrument :  
 MSVOA\_Y  
 ClientSampleId :  
 GT-06-(8.5-10)

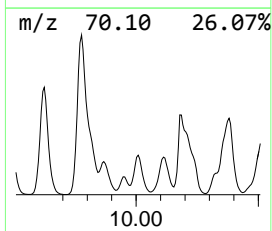
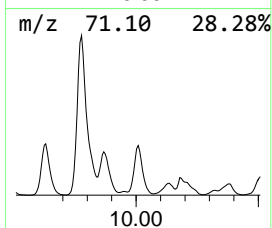
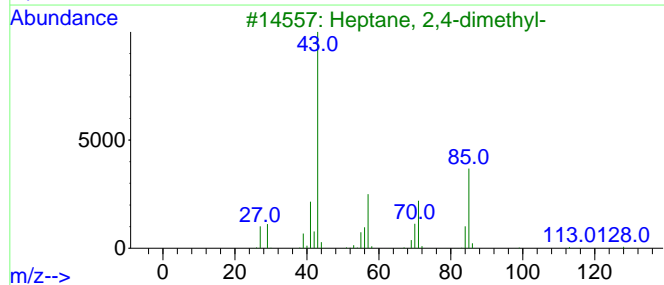
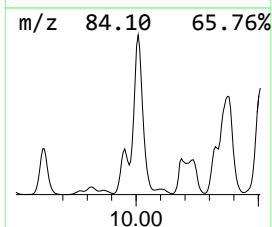
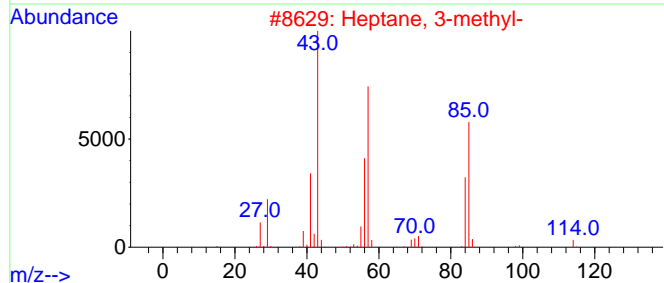
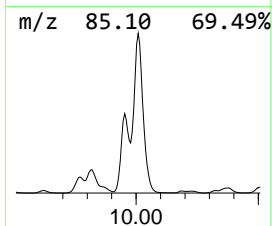
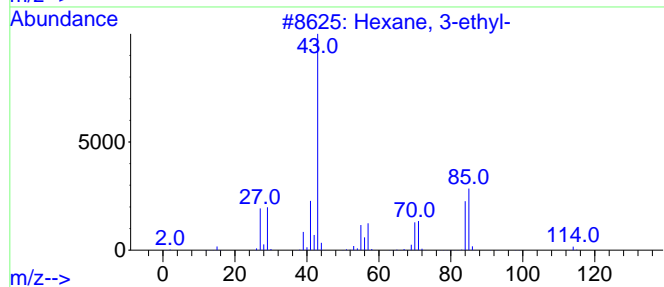
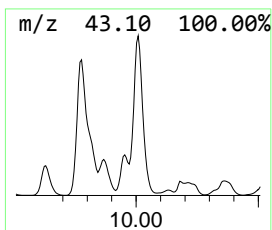
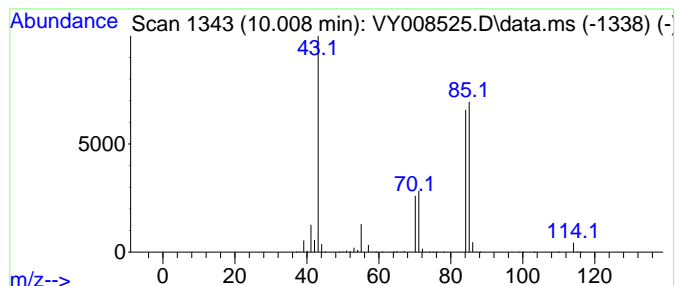
Quant Method : Z:\voasrv\HPCHEM1\MSVOA\_Y\methods\82Y042122S.M  
 Quant Title : SW846 8260

TIC Library : C:\Database\NIST20.L  
 TIC Integration Parameters: LSCINT.P

\*\*\*\*\*  
 Peak Number 5 Hexane, 3-ethyl- Concentration Rank 7

R.T.	EstConc	Area	Relative to ISTD	R.T.
10.008	406.64 ug/l	23144100	1,4-Difluorobenzene	8.691

Hit#	of	5	Tentative ID	MW	MolForm	CAS#	Qual
1			Hexane, 3-ethyl-	114	C8H18	000619-99-8	91
2			Heptane, 3-methyl-	114	C8H18	000589-81-1	50
3			Heptane, 2,4-dimethyl-	128	C9H20	002213-23-2	40
4			Heptane, 4,4-dimethyl-	128	C9H20	001068-19-5	37
5			Pentane, 3-ethyl-	100	C7H16	000617-78-7	27





Data Path : Z:\voasrv\HPCHEM1\MSVOA\_Y\Data\VY042722\  
 Data File : VY008525.D  
 Acq On : 27 Apr 2022 14:24  
 Operator : KP/MD  
 Sample : N2577-03  
 Misc : 6.86g/5.0mL/MSVOA\_Y/SOIL  
 ALS Vial : 14 Sample Multiplier: 1

Instrument :  
 MSVOA\_Y  
 ClientSampleId :  
 GT-06-(8.5-10)

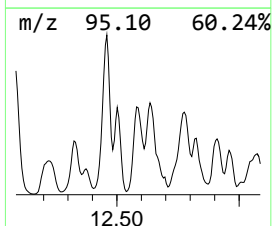
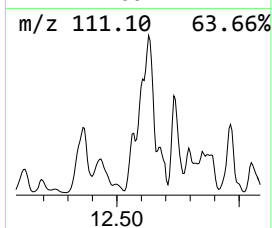
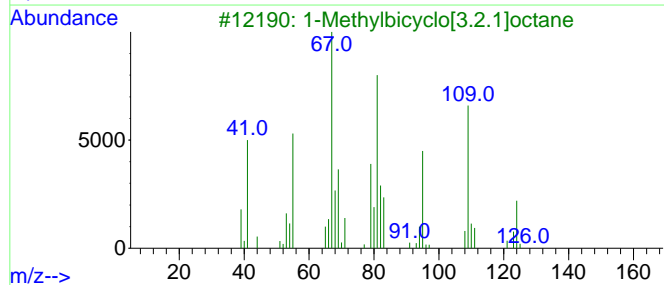
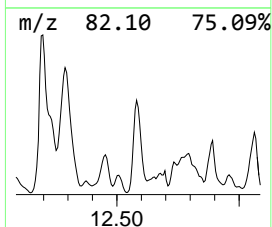
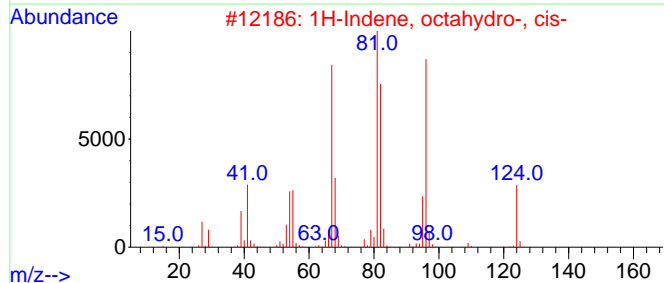
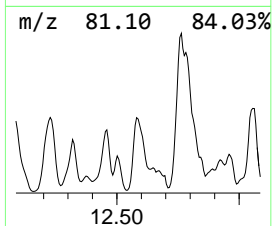
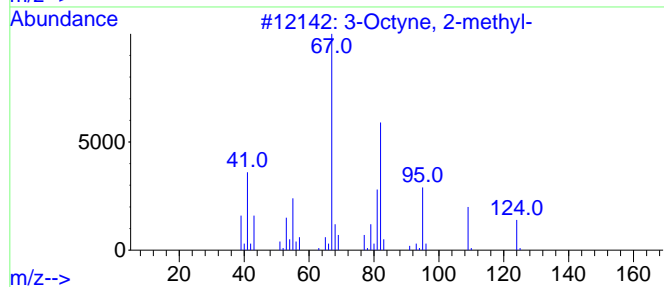
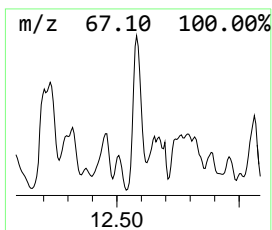
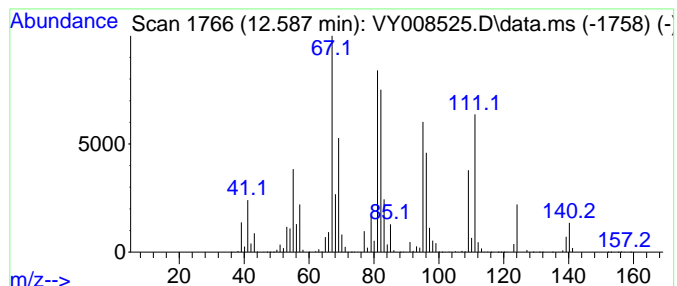
Quant Method : Z:\voasrv\HPCHEM1\MSVOA\_Y\methods\82Y042122S.M  
 Quant Title : SW846 8260

TIC Library : C:\Database\NIST20.L  
 TIC Integration Parameters: LSCINT.P

\*\*\*\*\*  
 Peak Number 6 unknown12.587 Concentration Rank 1

R.T.	EstConc	Area	Relative to ISTD	R.T.
12.587	1501.89 ug/l	68267700	1,4-Dichlorobenzene-d4	13.416

Hit#	of	5	Tentative ID	MW	MolForm	CAS#	Qual
1			3-Octyne, 2-methyl-	124	C9H16	055402-15-8	49
2			1H-Indene, octahydro-, cis-	124	C9H16	004551-51-3	46
3			1-Methylbicyclo[3.2.1]octane	124	C9H16	119972-41-7	46
4			3,3A,6,6A-TETRAHYDROCYCLOPENTA[B...]	124	C7H8O2	054483-22-6	38
5			Pentalene, octahydro-2-methyl-	124	C9H16	003868-64-2	35



Data Path : Z:\voasrv\HPCHEM1\MSVOA\_Y\Data\VY042722\  
 Data File : VY008525.D  
 Acq On : 27 Apr 2022 14:24  
 Operator : KP/MD  
 Sample : N2577-03  
 Misc : 6.86g/5.0mL/MSVOA\_Y/SOIL  
 ALS Vial : 14 Sample Multiplier: 1

Instrument :  
 MSVOA\_Y  
 ClientSampleId :  
 GT-06-(8.5-10)

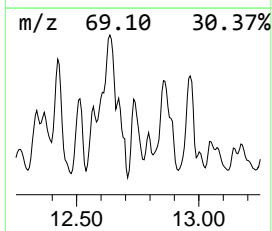
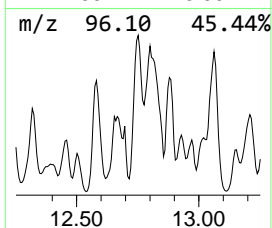
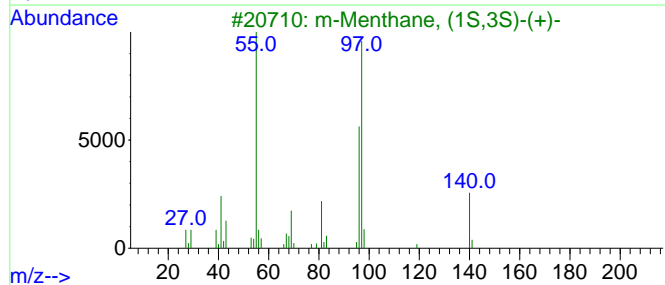
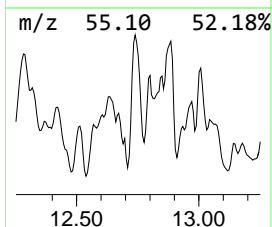
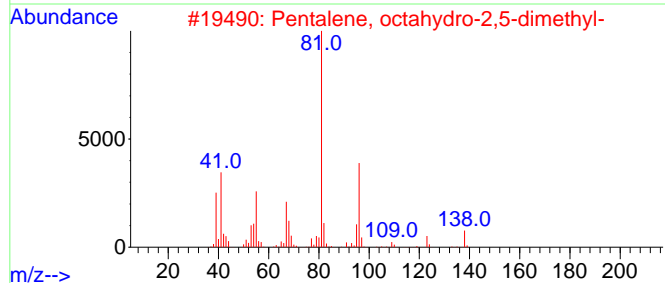
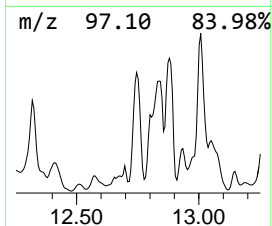
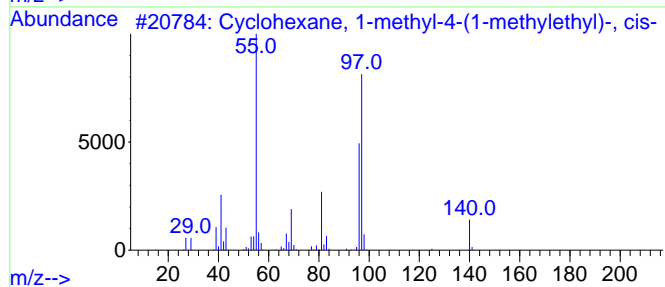
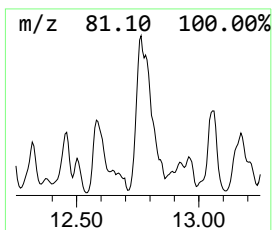
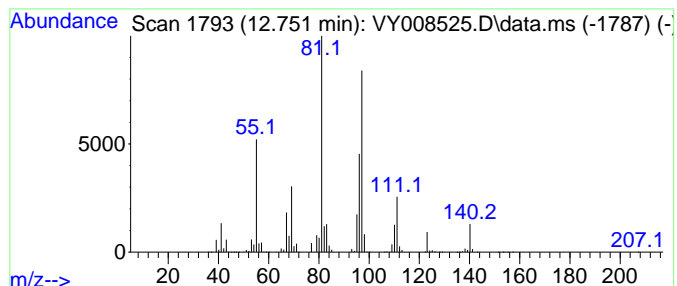
Quant Method : Z:\voasrv\HPCHEM1\MSVOA\_Y\methods\82Y042122S.M  
 Quant Title : SW846 8260

TIC Library : C:\Database\NIST20.L  
 TIC Integration Parameters: LSCINT.P

\*\*\*\*\*  
 Peak Number 7 unknown12.752 Concentration Rank 2

R.T.	EstConc	Area	Relative to ISTD	R.T.
12.752	1128.50 ug/l	51295500	1,4-Dichlorobenzene-d4	13.416

Hit#	of	5	Tentative ID	MW	MolForm	CAS#	Qual
1			Cyclohexane, 1-methyl-4-(1-methyl-...)	140	C10H20	006069-98-3	43
2			Pentalene, octahydro-2,5-dimethyl-	138	C10H18	028588-55-8	43
3			m-Menthane, (1S,3S)-(+)-	140	C10H20	013837-67-7	43
4			Cyclohexane, 1-methyl-3-(1-methyl-...)	140	C10H20	016580-24-8	38
5			2-Butenenitrile, 2-amino-3-methyl-	96	C5H8N2	1010196-28-0	38



Data Path : Z:\voasrv\HPCHEM1\MSVOA\_Y\Data\VY042722\  
 Data File : VY008525.D  
 Acq On : 27 Apr 2022 14:24  
 Operator : KP/MD  
 Sample : N2577-03  
 Misc : 6.86g/5.0mL/MSVOA\_Y/SOIL  
 ALS Vial : 14 Sample Multiplier: 1

Instrument :  
 MSVOA\_Y  
 ClientSampleId :  
 GT-06-(8.5-10)

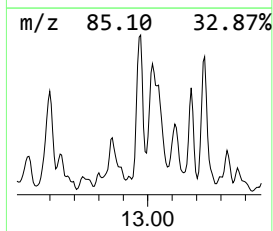
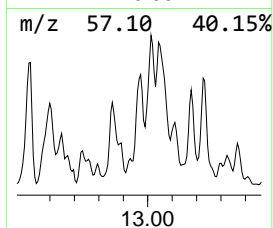
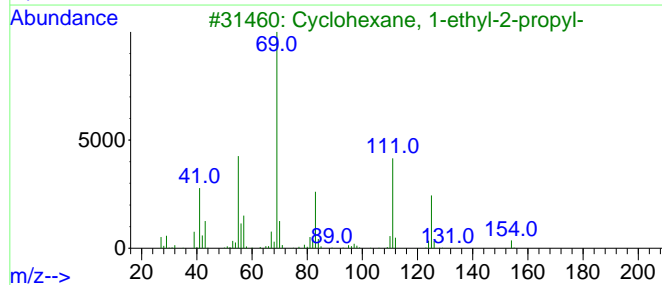
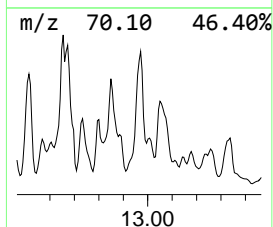
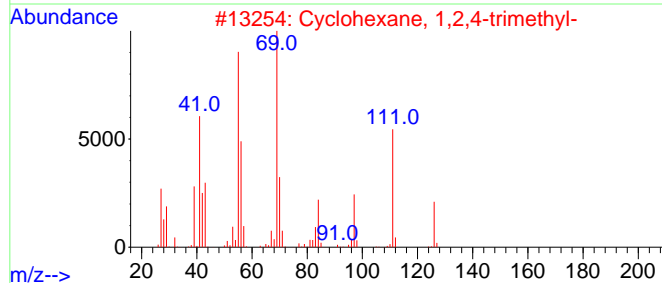
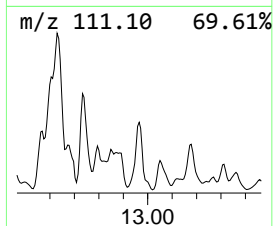
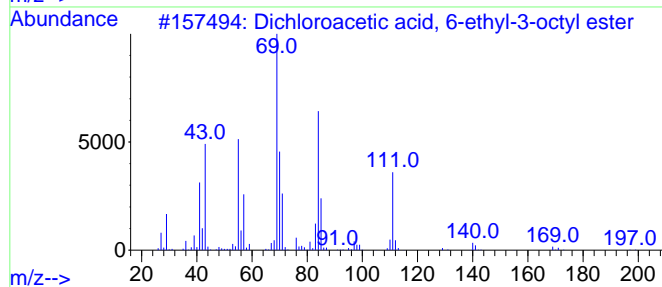
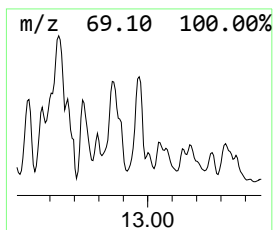
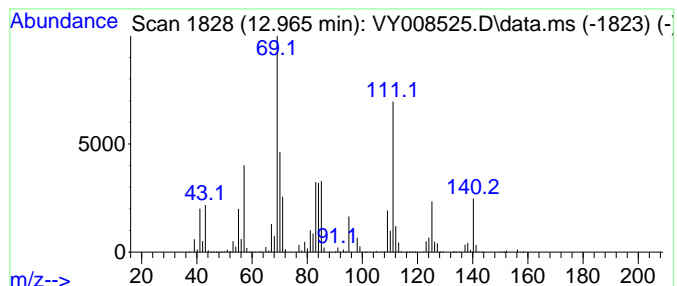
Quant Method : Z:\voasrv\HPCHEM1\MSVOA\_Y\methods\82Y042122S.M  
 Quant Title : SW846 8260

TIC Library : C:\Database\NIST20.L  
 TIC Integration Parameters: LSCINT.P

\*\*\*\*\*  
 Peak Number 8 Dichloroacetic acid, 6-ethy... Concentration Rank 6

R.T.	EstConc	Area	Relative to ISTD	R.T.
12.965	480.91 ug/l	21859700	1,4-Dichlorobenzene-d4	13.416

Hit#	of 5	Tentative ID	MW	MolForm	CAS#	Qual
1		Dichloroacetic acid, 6-ethyl-3-o...	268	C12H22Cl2O2	1000282-56-6	59
2		Cyclohexane, 1,2,4-trimethyl-	126	C9H18	002234-75-5	50
3		Cyclohexane, 1-ethyl-2-propyl-	154	C11H22	062238-33-9	47
4		6-Ethyl-2,3-dihydropyran-2,4-dione	140	C7H8O3	004435-30-7	43
5		3,4-Diethyl-3-hexene	140	C10H20	000868-46-2	43



Data Path : Z:\voasrv\HPCHEM1\MSVOA\_Y\Data\VY042722\  
 Data File : VY008525.D  
 Acq On : 27 Apr 2022 14:24  
 Operator : KP/MD  
 Sample : N2577-03  
 Misc : 6.86g/5.0mL/MSVOA\_Y/SOIL  
 ALS Vial : 14 Sample Multiplier: 1

Instrument :  
 MSVOA\_Y  
 ClientSampleId :  
 GT-06-(8.5-10)

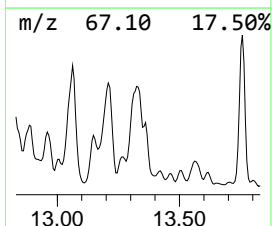
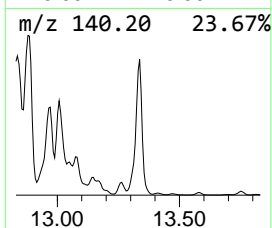
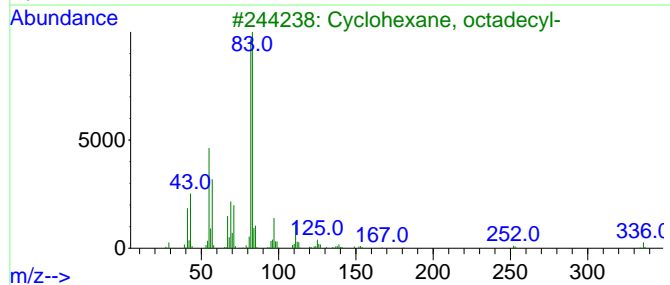
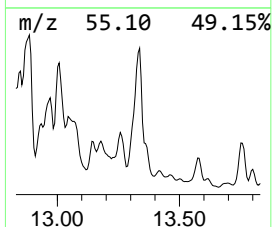
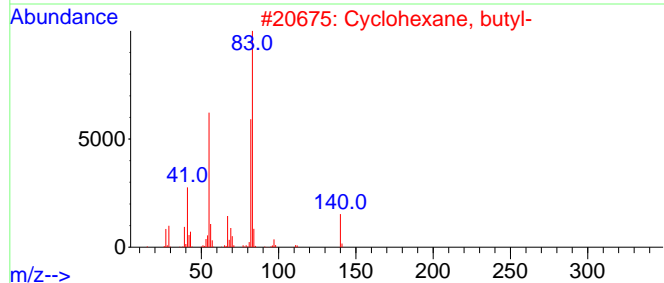
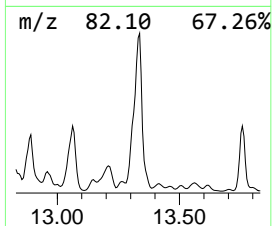
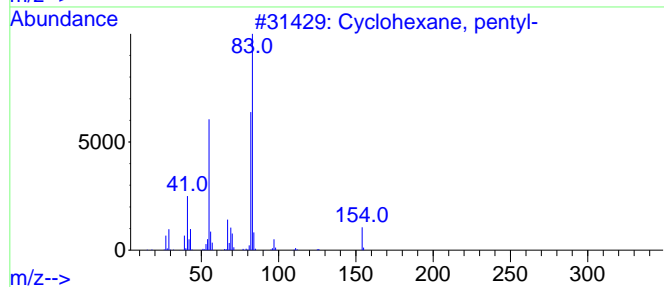
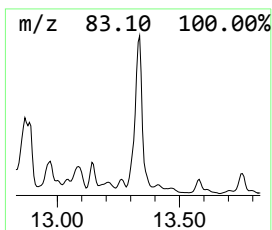
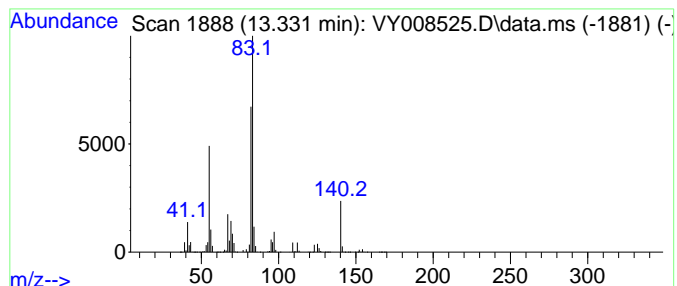
Quant Method : Z:\voasrv\HPCHEM1\MSVOA\_Y\methods\82Y042122S.M  
 Quant Title : SW846 8260

TIC Library : C:\Database\NIST0.L  
 TIC Integration Parameters: LSCINT.P

\*\*\*\*\*  
 Peak Number 9 Cyclohexane, pentyl- Concentration Rank 3

R.T.	EstConc	Area	Relative to ISTD	R.T.
13.331	802.01 ug/l	36455100	1,4-Dichlorobenzene-d4	13.416

Hit#	of 5	Tentative ID	MW	MolForm	CAS#	Qual
1		Cyclohexane, pentyl-	154	C11H22	004292-92-6	76
2		Cyclohexane, butyl-	140	C10H20	001678-93-9	74
3		Cyclohexane, octadecyl-	336	C24H48	004445-06-1	64
4		Cyclohexane, undecyl-	238	C17H34	054105-66-7	64
5		Cyclohexanone, 3,3,5-trimethyl-	140	C9H16O	000873-94-9	53



Data Path : Z:\voasrv\HPCHEM1\MSVOA\_Y\Data\VY042722\  
 Data File : VY008525.D  
 Acq On : 27 Apr 2022 14:24  
 Operator : KP/MD  
 Sample : N2577-03  
 Misc : 6.86g/5.0mL/MSVOA\_Y/SOIL  
 ALS Vial : 14 Sample Multiplier: 1

Instrument :  
 MSVOA\_Y  
 ClientSampleId :  
 GT-06-(8.5-10)

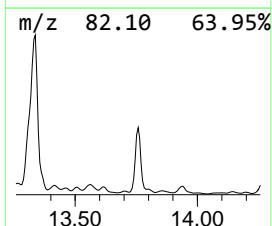
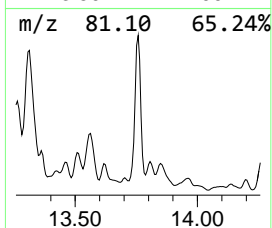
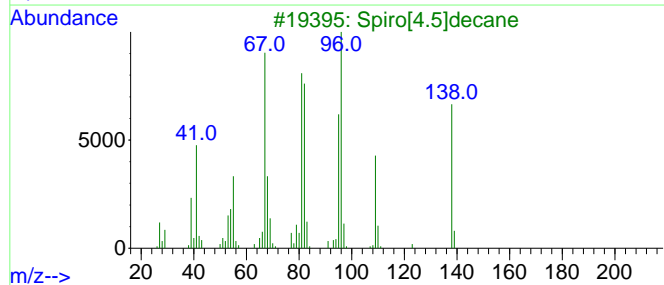
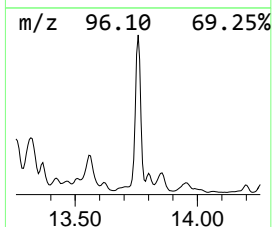
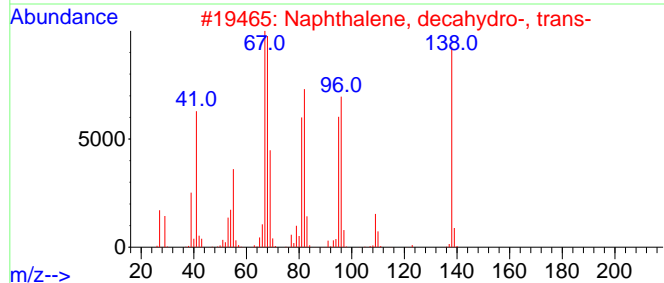
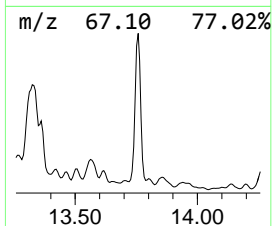
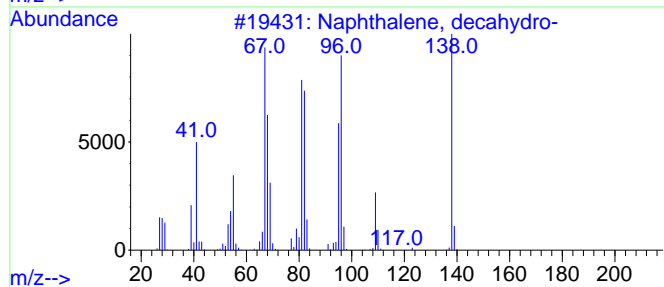
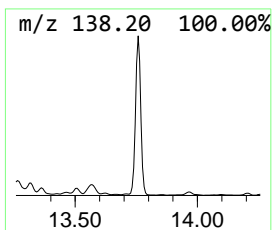
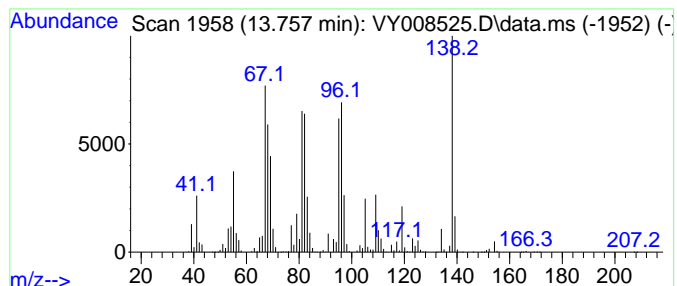
Quant Method : Z:\voasrv\HPCHEM1\MSVOA\_Y\methods\82Y042122S.M  
 Quant Title : SW846 8260

TIC Library : C:\Database\NIST20.L  
 TIC Integration Parameters: LSCINT.P

\*\*\*\*\*  
 Peak Number 10 Naphthalene, decahydro- Concentration Rank 4

R.T.	EstConc	Area	Relative to ISTD	R.T.
13.757	668.77 ug/l	30398600	1,4-Dichlorobenzene-d4	13.416

Hit#	of 5	Tentative ID	MW	MolForm	CAS#	Qual
1		Naphthalene, decahydro-	138	C10H18	000091-17-8	97
2		Naphthalene, decahydro-, trans-	138	C10H18	000493-02-7	93
3		Spiro[4.5]decane	138	C10H18	000176-63-6	81
4		Naphthalene, decahydro-, cis-	138	C10H18	000493-01-6	81
5		2,2-Dimethyl-3-vinylcyclopentanone	138	C9H14O	1000427-24-5	76



Data Path : Z:\voasrv\HPCHEM1\MSVOA\_Y\Data\VY042722\  
Data File : VY008525.D  
Acq On : 27 Apr 2022 14:24  
Operator : KP/MD  
Sample : N2577-03  
Misc : 6.86g/5.0mL/MSVOA\_Y/SOIL  
ALS Vial : 14 Sample Multiplier: 1

Instrument :  
MSVOA\_Y  
ClientSampleId :  
GT-06-(8.5-10)

Quant Method : Z:\voasrv\HPCHEM1\MSVOA\_Y\methods\82Y042122S.M  
Quant Title : SW846 8260

TIC Library : C:\Database\NIST0.L  
TIC Integration Parameters: LSCINT.P

TIC Top Hit name	RT	EstConc	Units	Response	--Internal Standard--			
					#	RT	Resp	Conc
Cyclopentane, 1...	9.472	375.2	ug/l	21354300	2	8.691	2845780	50.0
Cyclopentane, 1...	9.624	359.5	ug/l	20461300	2	8.691	2845780	50.0
Hexane, 2,3-dim...	9.776	564.0	ug/l	32098200	2	8.691	2845780	50.0
Hexane, 3,4-dim...	9.953	333.3	ug/l	18970800	2	8.691	2845780	50.0
Hexane, 3-ethyl-	10.008	406.6	ug/l	23144100	2	8.691	2845780	50.0
unknown12.587	12.587	1501.9	ug/l	68267700	4	13.416	2272730	50.0
unknown12.752	12.752	1128.5	ug/l	51295500	4	13.416	2272730	50.0
Dichloroacetic ...	12.965	480.9	ug/l	21859700	4	13.416	2272730	50.0
Cyclohexane, pe...	13.331	802.0	ug/l	36455100	4	13.416	2272730	50.0
Naphthalene, de...	13.757	668.8	ug/l	30398600	4	13.416	2272730	50.0