

Data Path : Z:\voasrv\HPCHEM1\MSVOA_Y\Data\VY042723\
 Data File : VY013497.D
 Acq On : 27 Apr 2023 17:16
 Operator : KP/MD
 Sample : 02470-05RE
 Misc : 5.01g/5.0mL/MSVOA_Y/SOIL
 ALS Vial : 11 Sample Multiplier: 1

Instrument :
 MSVOA_Y
 ClientSampleId :
 SB-06-9.5-10.0RE

Quant Time: Apr 28 01:32:30 2023
 Quant Method : Z:\voasrv\HPCHEM1\MSVOA_Y\methods\82Y042423S.M
 Quant Title : SW846 8260
 QLast Update : Tue Apr 25 02:39:58 2023
 Response via : Initial Calibration

Compound	R.T.	QIon	Response	Conc	Units	Dev(Min)

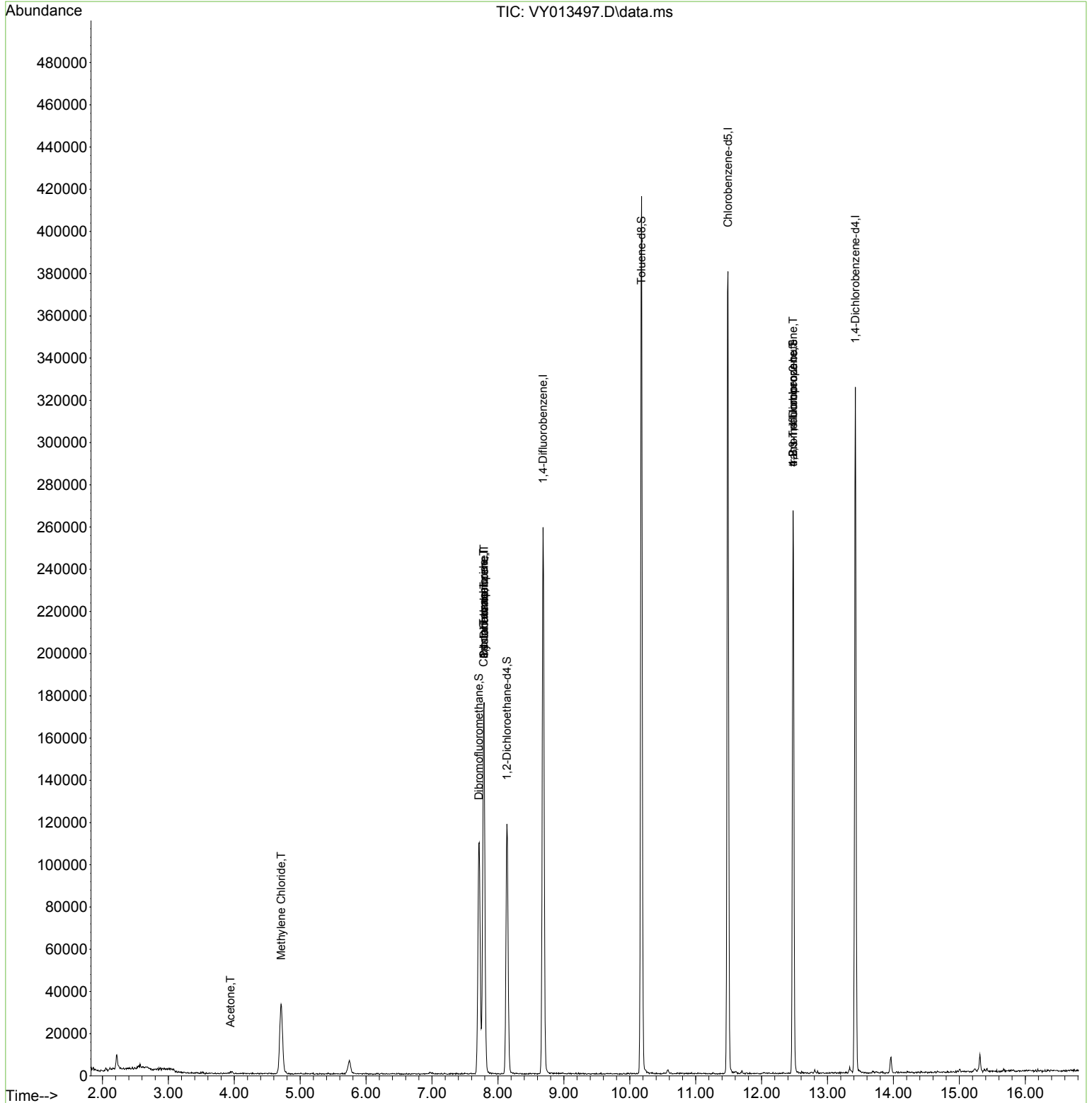
Internal Standards						
1) Pentafluorobenzene	7.789	168	134593	50.000	ug/l	0.00
34) 1,4-Difluorobenzene	8.685	114	217452	50.000	ug/l	0.00
63) Chlorobenzene-d5	11.490	117	201692	50.000	ug/l	0.00
72) 1,4-Dichlorobenzene-d4	13.422	152	81534	50.000	ug/l	0.00
System Monitoring Compounds						
33) 1,2-Dichloroethane-d4	8.136	65	95279	64.577	ug/l	0.00
Spiked Amount	50.000	Range	50 - 163	Recovery	=	129.160%
35) Dibromofluoromethane	7.710	113	78404	57.327	ug/l	0.00
Spiked Amount	50.000	Range	54 - 147	Recovery	=	114.660%
50) Toluene-d8	10.179	98	262533	53.959	ug/l	0.00
Spiked Amount	50.000	Range	58 - 134	Recovery	=	107.920%
62) 4-Bromofluorobenzene	12.477	95	76890	46.877	ug/l	0.00
Spiked Amount	50.000	Range	30 - 143	Recovery	=	93.760%
Target Compounds						
					Qvalue	
13) Acrolein	3.570	56	23	Below Cal	#	16
16) Acetone	3.942	43	642	1.105	ug/l #	86
20) Methylene Chloride	4.710	84	22950	5.391	ug/l #	84
31) Cyclohexane	7.789	56	3501	1.325	ug/l #	29
36) 1,1-Dichloropropene	7.789	75	10844	4.777	ug/l #	49
38) Carbon Tetrachloride	7.783	117	12667	5.324	ug/l #	15
76) 1,2,3-Trichloropropane	12.477	75	40354	36.699	ug/l #	100
81) trans-1,4-Dichloro-2-b...	12.477	75	40354	75.070	ug/l #	13

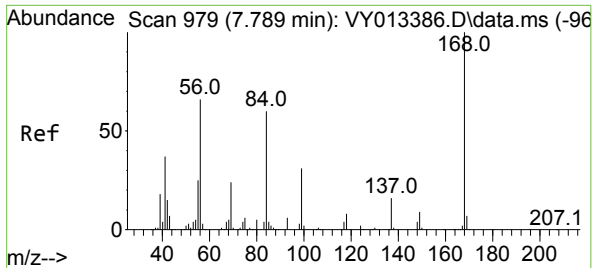
(#) = qualifier out of range (m) = manual integration (+) = signals summed

Data Path : Z:\voasrv\HPCHEM1\MSVOA_Y\Data\VY042723\
 Data File : VY013497.D
 Acq On : 27 Apr 2023 17:16
 Operator : KP/MD
 Sample : 02470-05RE
 Misc : 5.01g/5.0mL/MSVOA_Y/SOIL
 ALS Vial : 11 Sample Multiplier: 1

Instrument :
 MSVOA_Y
ClientSampleId :
 SB-06-9.5-10.0RE

Quant Time: Apr 28 01:32:30 2023
 Quant Method : Z:\voasrv\HPCHEM1\MSVOA_Y\methods\82Y042423S.M
 Quant Title : SW846 8260
 QLast Update : Tue Apr 25 02:39:58 2023
 Response via : Initial Calibration

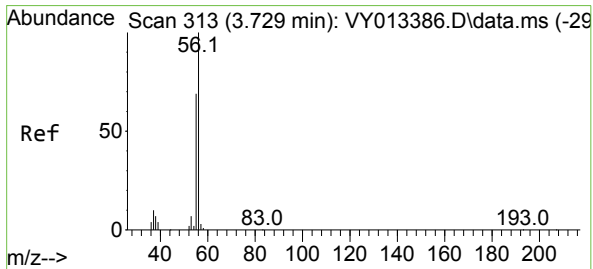
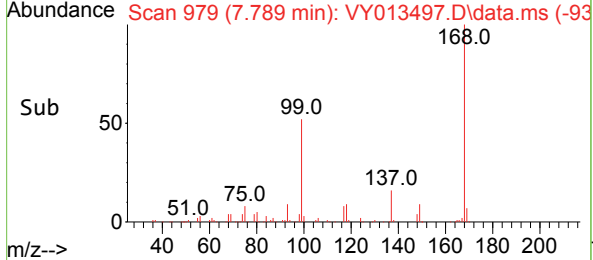
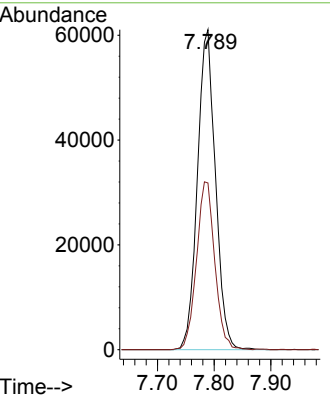
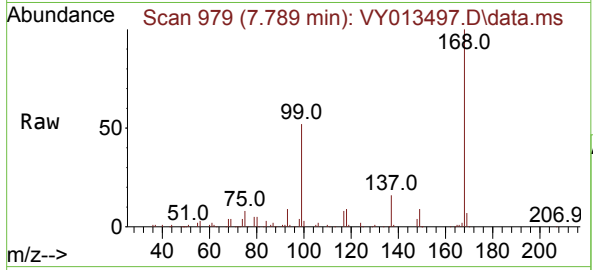




#1
 Pentafluorobenzene
 Concen: 50.000 ug/l
 RT: 7.789 min Scan# 91
 Delta R.T. -0.000 min
 Lab File: VY013497.D
 Acq: 27 Apr 2023 17:16

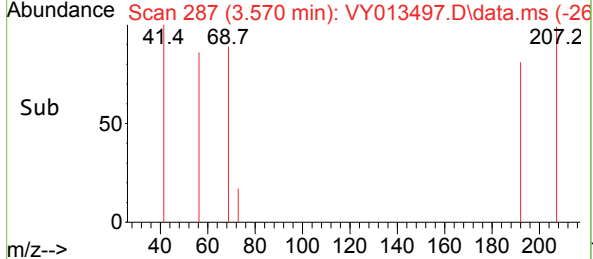
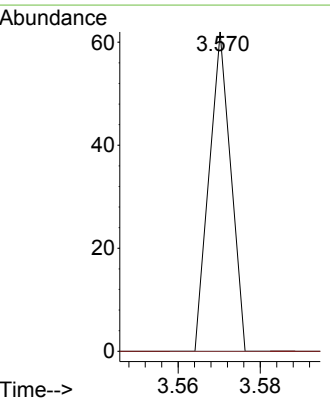
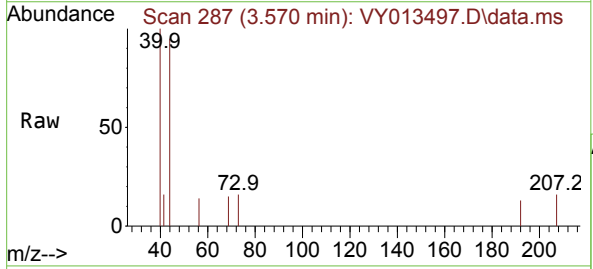
Instrument : MSVOA_Y
 ClientSampleId : SB-06-9.5-10.0RE

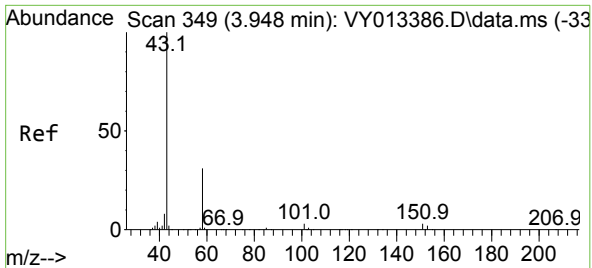
Tgt Ion:168 Resp: 134593
 Ion Ratio Lower Upper
 168 100
 99 52.1 41.8 62.6



#13
 Acrolein
 Concen: Below Cal
 RT: 3.570 min Scan# 287
 Delta R.T. -0.159 min
 Lab File: VY013497.D
 Acq: 27 Apr 2023 17:16

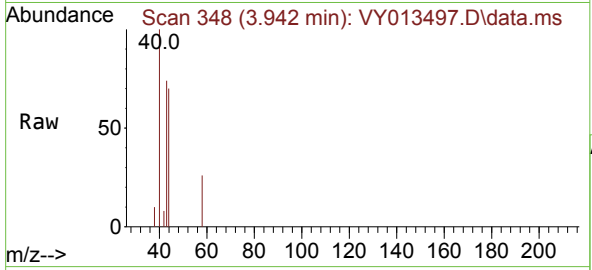
Tgt Ion: 56 Resp: 23
 Ion Ratio Lower Upper
 56 100
 55 0.0 54.1 81.1#



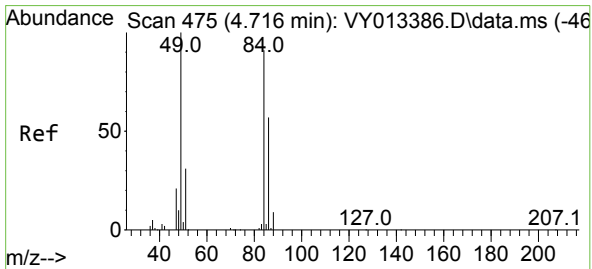
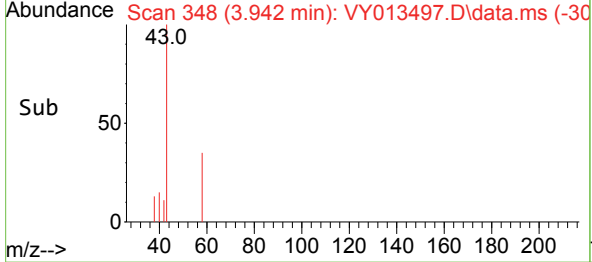
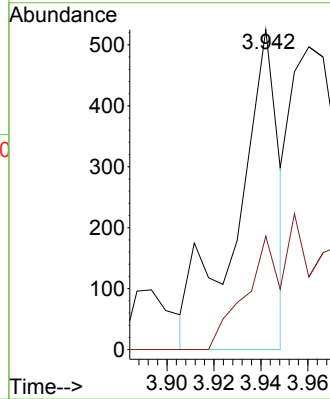


#16
 Acetone
 Concen: 1.105 ug/l
 RT: 3.942 min Scan# 34
 Delta R.T. -0.006 min
 Lab File: VY013497.D
 Acq: 27 Apr 2023 17:16

Instrument : MSVOA_Y
 ClientSampleId : SB-06-9.5-10.0RE

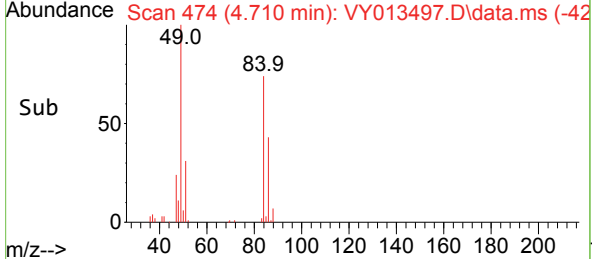
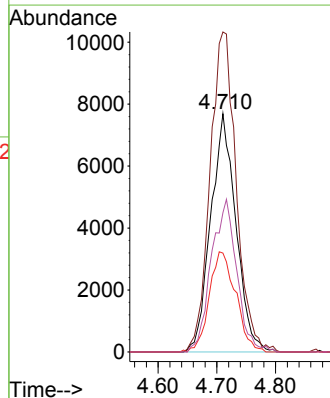
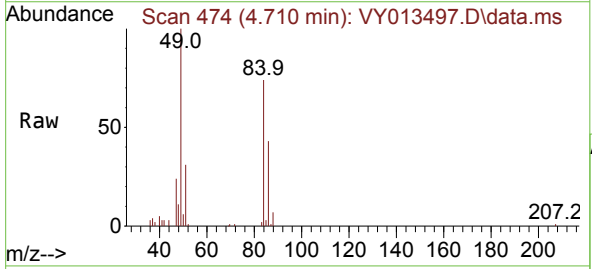


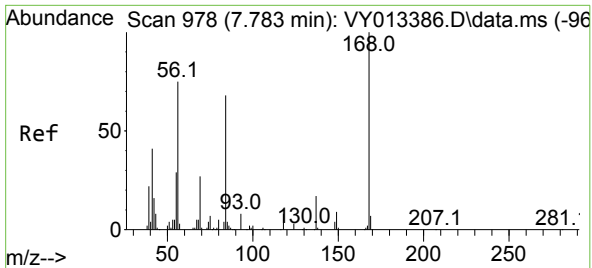
Tgt Ion: 43 Resp: 642
 Ion Ratio Lower Upper
 43 100
 58 39.7 25.4 38.0#



#20
 Methylene Chloride
 Concen: 5.391 ug/l
 RT: 4.710 min Scan# 474
 Delta R.T. -0.006 min
 Lab File: VY013497.D
 Acq: 27 Apr 2023 17:16

Tgt Ion: 84 Resp: 22950
 Ion Ratio Lower Upper
 84 100
 49 134.4 88.0 132.0#
 51 41.5 27.4 41.0#
 86 58.4 50.4 75.6



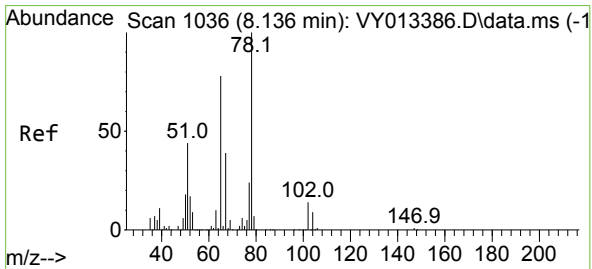
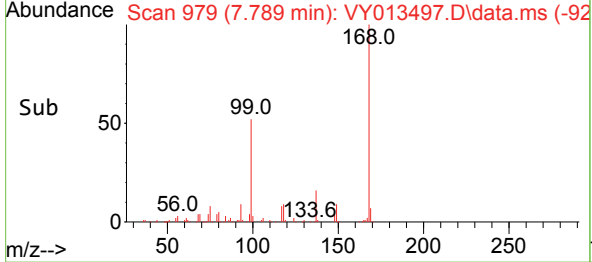
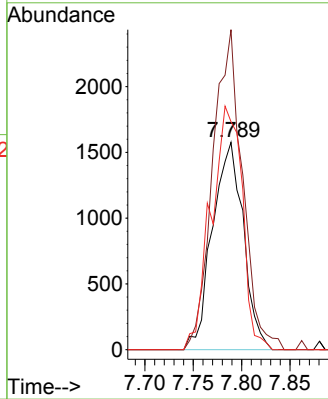
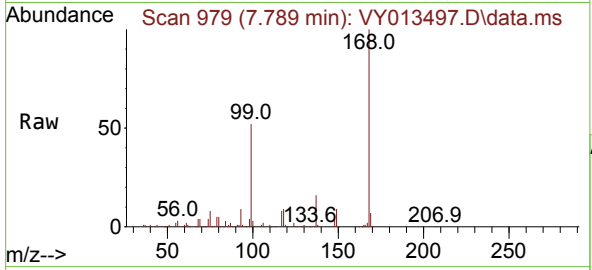


#31
 Cyclohexane
 Concen: 1.325 ug/l
 RT: 7.789 min Scan# 91
 Delta R.T. 0.006 min
 Lab File: VY013497.D
 Acq: 27 Apr 2023 17:16

Instrument :
 MSVOA_Y
 ClientSampleId :
 SB-06-9.5-10.0RE

Tgt Ion: 56 Resp: 3501

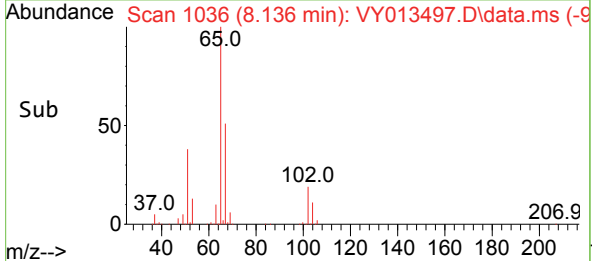
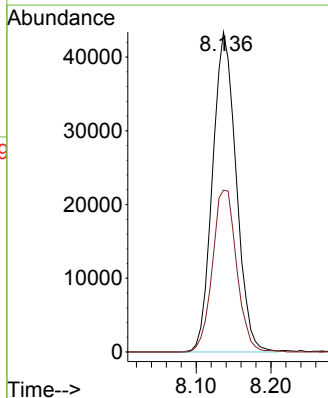
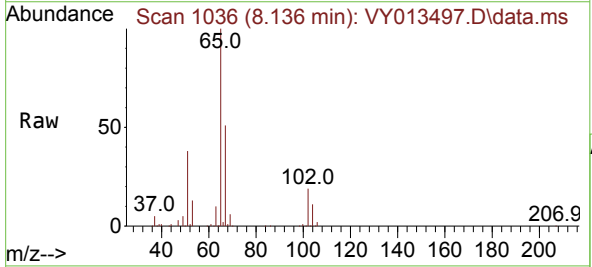
Ion	Ratio	Lower	Upper
56	100		
69	154.3	29.2	43.8#
84	110.0	73.0	109.6#

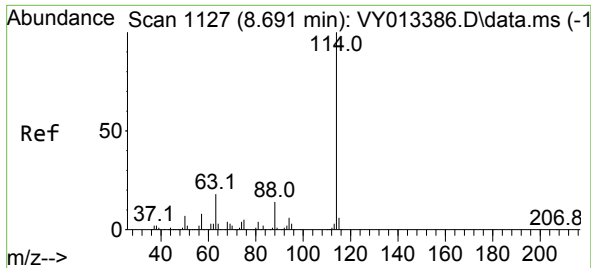


#33
 1,2-Dichloroethane-d4
 Concen: 64.577 ug/l
 RT: 8.136 min Scan# 1036
 Delta R.T. 0.000 min
 Lab File: VY013497.D
 Acq: 27 Apr 2023 17:16

Tgt Ion: 65 Resp: 95279

Ion	Ratio	Lower	Upper
65	100		
67	52.0	0.0	103.4

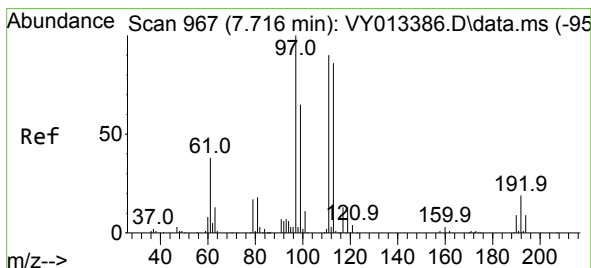
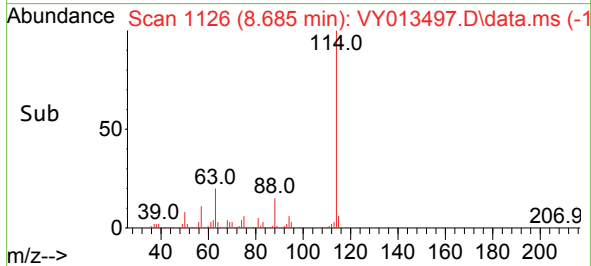
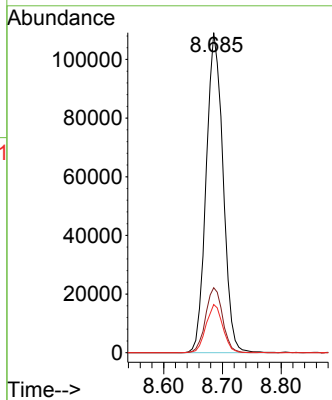
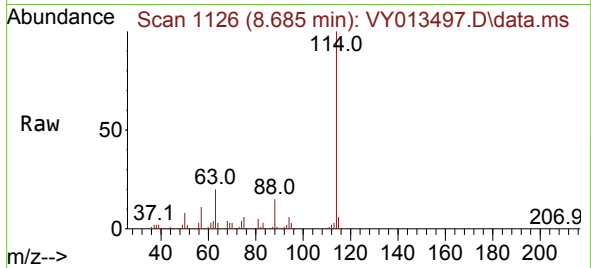




#34
 1,4-Difluorobenzene
 Concen: 50.000 ug/l
 RT: 8.685 min Scan# 1126
 Delta R.T. -0.006 min
 Lab File: VY013497.D
 Acq: 27 Apr 2023 17:16

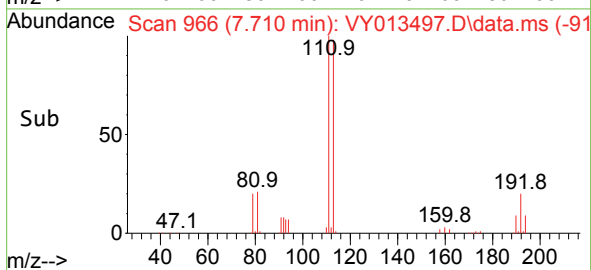
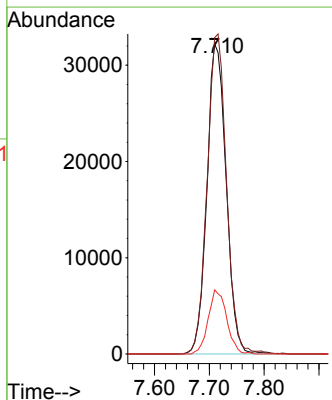
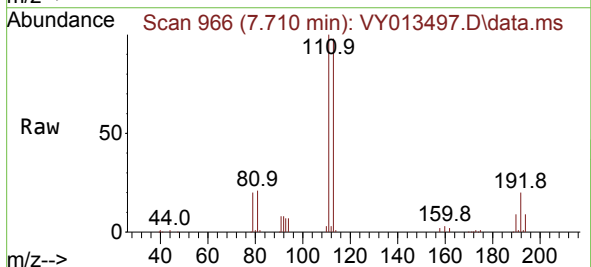
Instrument : MSVOA_Y
 ClientSampleId : SB-06-9.5-10.0RE

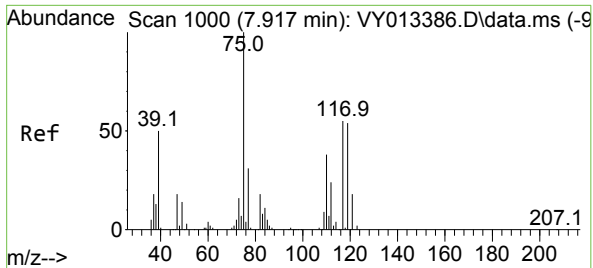
Tgt Ion	Resp	Lower	Upper
114	100		
63	20.3	0.0	36.6
88	15.0	0.0	28.8



#35
 Dibromofluoromethane
 Concen: 57.327 ug/l
 RT: 7.710 min Scan# 966
 Delta R.T. -0.006 min
 Lab File: VY013497.D
 Acq: 27 Apr 2023 17:16

Tgt Ion	Resp	Lower	Upper
113	100		
111	103.9	82.2	123.2
192	19.9	16.7	25.1

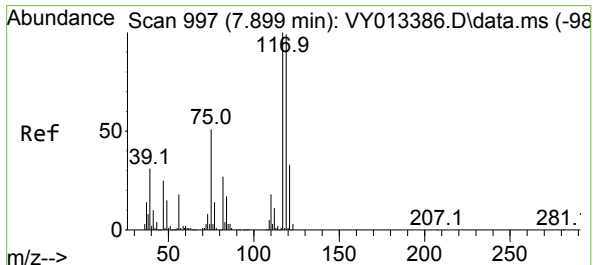
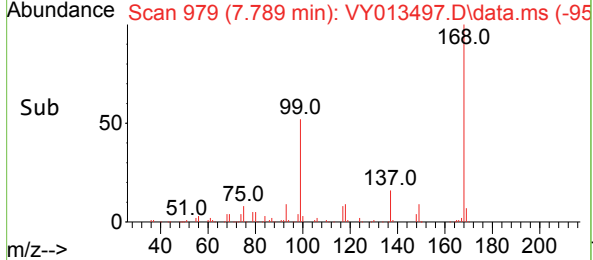
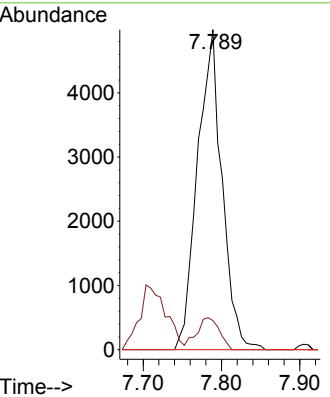
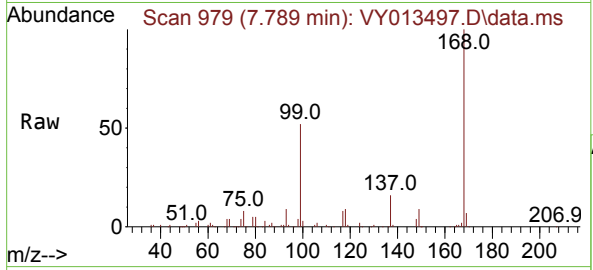




#36
 1,1-Dichloropropene
 Concen: 4.777 ug/l
 RT: 7.789 min Scan# 91
 Delta R.T. -0.128 min
 Lab File: VY013497.D
 Acq: 27 Apr 2023 17:16

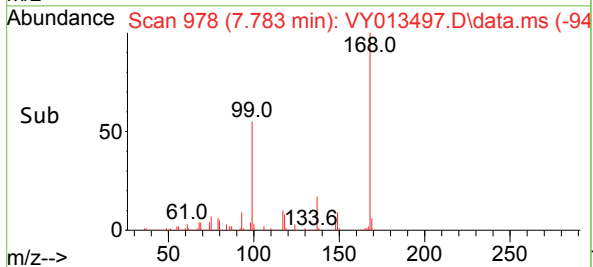
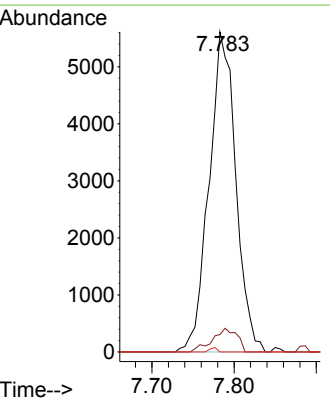
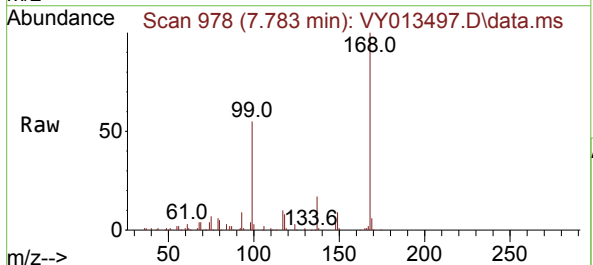
Instrument : MSVOA_Y
 ClientSampleId : SB-06-9.5-10.0RE

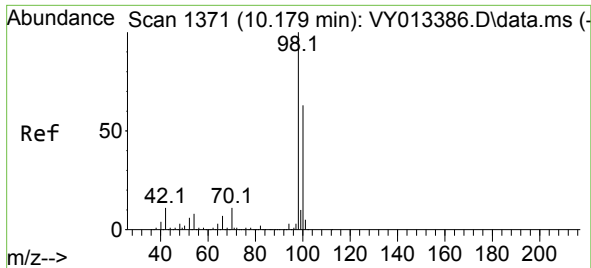
Tgt Ion	Resp	Lower	Upper
75	10844		
110	9.2	18.7	56.1#
77	0.0	24.6	37.0#



#38
 Carbon Tetrachloride
 Concen: 5.324 ug/l
 RT: 7.783 min Scan# 978
 Delta R.T. -0.116 min
 Lab File: VY013497.D
 Acq: 27 Apr 2023 17:16

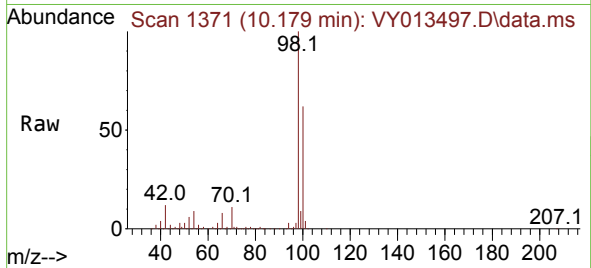
Tgt Ion	Resp	Lower	Upper
117	12667		
119	5.5	79.0	118.6#
121	0.0	26.6	40.0#



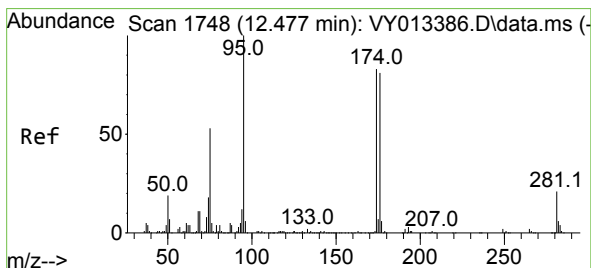
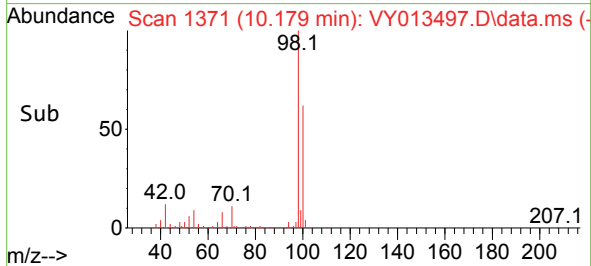
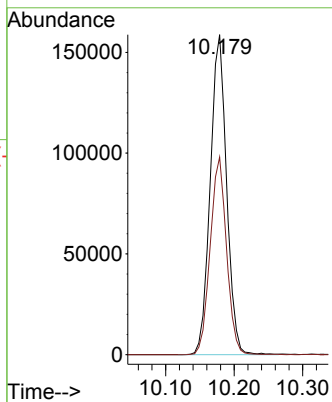


#50
 Toluene-d8
 Concen: 53.959 ug/l
 RT: 10.179 min Scan# 11
 Delta R.T. -0.000 min
 Lab File: VY013497.D
 Acq: 27 Apr 2023 17:16

Instrument :
 MSVOA_Y
 ClientSampleId :
 SB-06-9.5-10.0RE

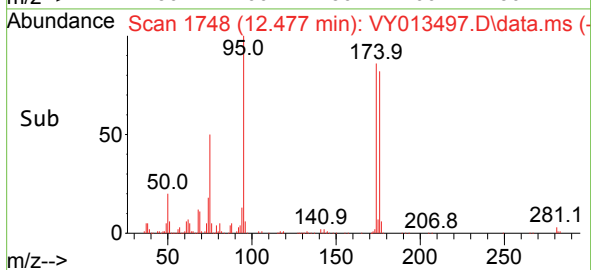
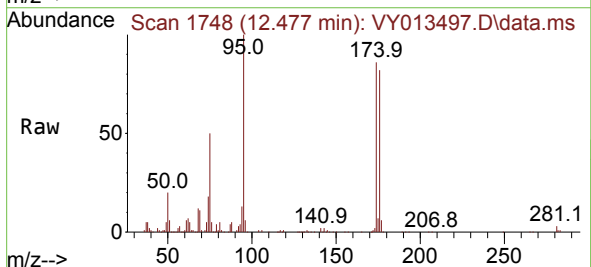
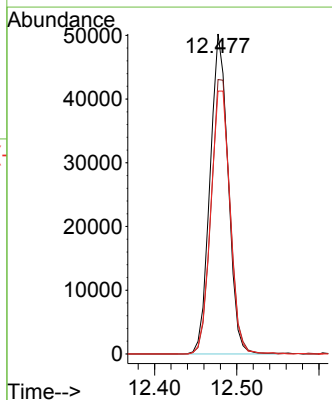


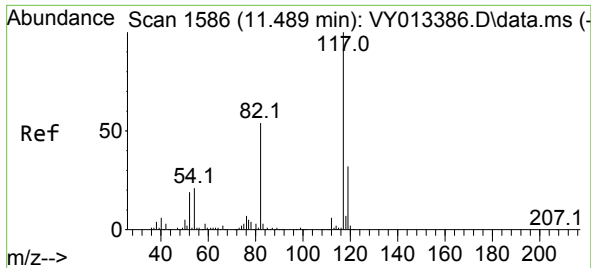
Tgt Ion: 98 Resp: 262533
 Ion Ratio Lower Upper
 98 100
 100 61.9 50.5 75.7



#62
 4-Bromofluorobenzene
 Concen: 46.877 ug/l
 RT: 12.477 min Scan# 1748
 Delta R.T. 0.000 min
 Lab File: VY013497.D
 Acq: 27 Apr 2023 17:16

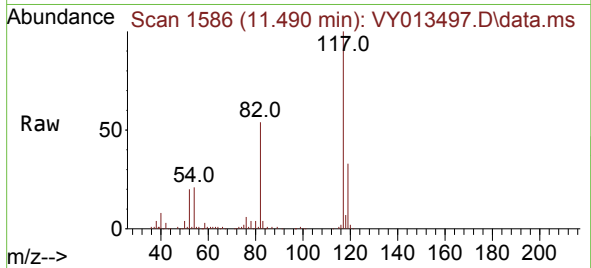
Tgt Ion: 95 Resp: 76890
 Ion Ratio Lower Upper
 95 100
 174 89.2 0.0 182.0
 176 87.6 0.0 175.4



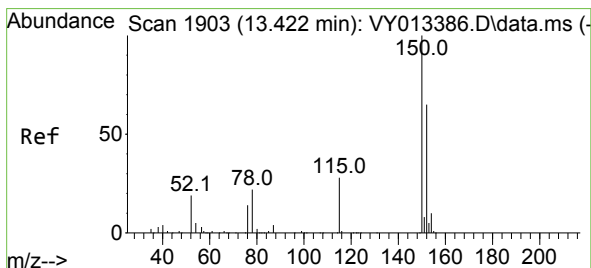
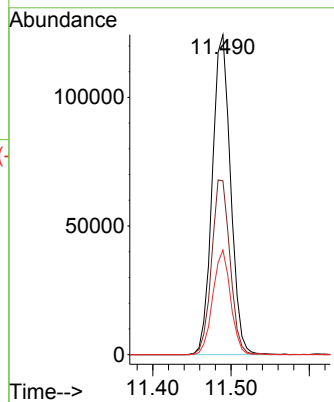
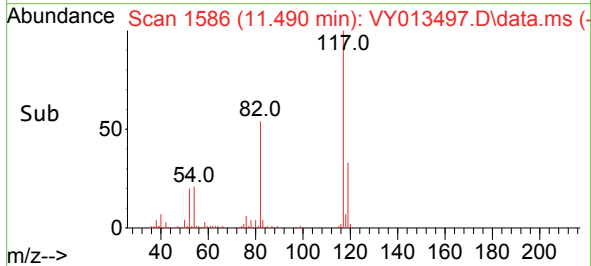


#63
 Chlorobenzene-d5
 Concen: 50.000 ug/l
 RT: 11.490 min Scan# 11
 Delta R.T. 0.001 min
 Lab File: VY013497.D
 Acq: 27 Apr 2023 17:16

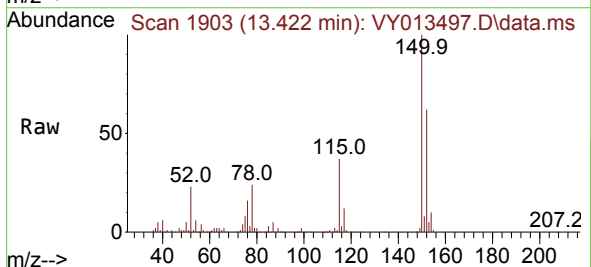
Instrument : MSVOA_Y
 ClientSampleId : SB-06-9.5-10.0RE



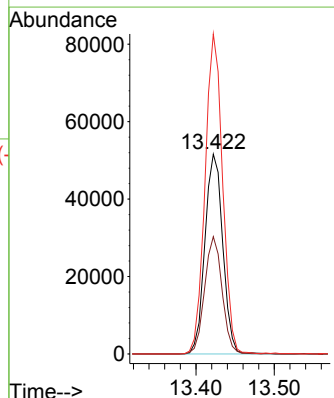
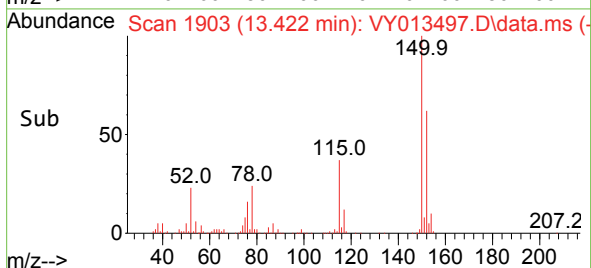
Tgt Ion:117 Resp: 201692
 Ion Ratio Lower Upper
 117 100
 82 54.4 43.0 64.6
 119 32.7 25.5 38.3

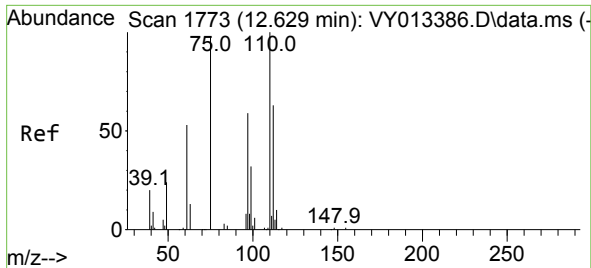


#72
 1,4-Dichlorobenzene-d4
 Concen: 50.000 ug/l
 RT: 13.422 min Scan# 1903
 Delta R.T. 0.000 min
 Lab File: VY013497.D
 Acq: 27 Apr 2023 17:16



Tgt Ion:152 Resp: 81534
 Ion Ratio Lower Upper
 152 100
 115 57.4 28.1 84.2
 150 157.1 0.0 352.0

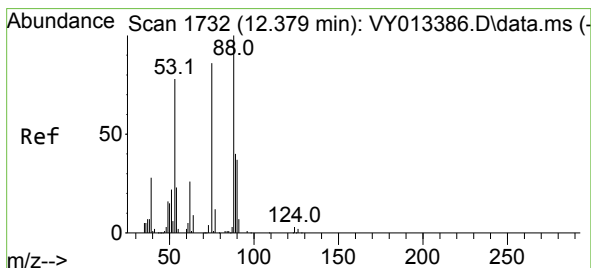
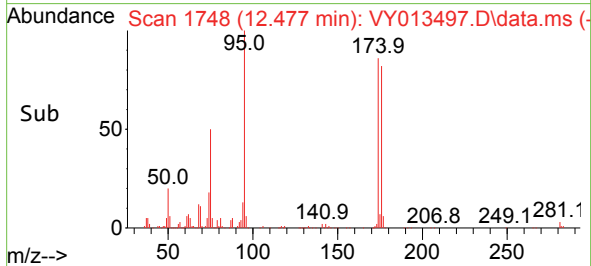
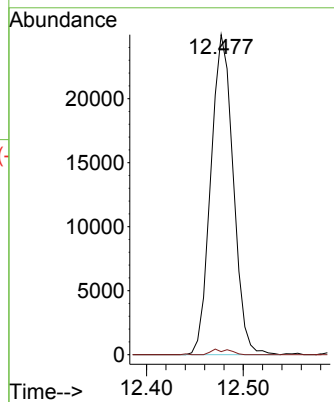
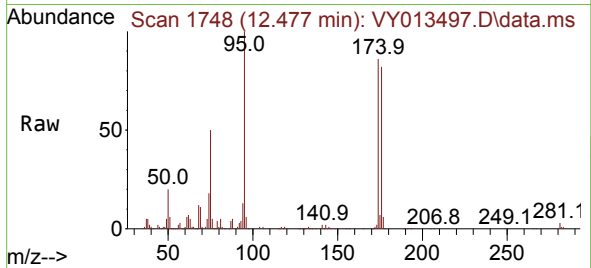




#76
 1,2,3-Trichloropropane
 Concen: 36.699 ug/l
 RT: 12.477 min Scan# 1748
 Delta R.T. -0.152 min
 Lab File: VY013497.D
 Acq: 27 Apr 2023 17:16

Instrument : MSVOA_Y
 ClientSampleId : SB-06-9.5-10.0RE

Tgt Ion: 75 Resp: 40354
 Ion Ratio Lower Upper
 75 100
 77 1.4 0.0 0.0#



#81
 trans-1,4-Dichloro-2-butene
 Concen: 75.070 ug/l
 RT: 12.477 min Scan# 1748
 Delta R.T. 0.098 min
 Lab File: VY013497.D
 Acq: 27 Apr 2023 17:16

Tgt Ion: 75 Resp: 40354
 Ion Ratio Lower Upper
 75 100
 53 0.3 73.2 109.8#
 89 0.0 38.0 57.0#

