

Data Path : Z:\voasrv\HPCHEM1\MSVOA\_Y\Data\VY042723\  
 Data File : VY013500.D  
 Acq On : 27 Apr 2023 18:27  
 Operator : KP/MD  
 Sample : 02470-11  
 Misc : 5.02g/5.0mL/MSVOA\_Y/SOIL  
 ALS Vial : 14 Sample Multiplier: 1

Instrument :  
 MSVOA\_Y  
 ClientSampleId :  
 SB-10-8.5-9.0

Integration Parameters: RTEINT.P

Integrator: RTE  
 Smoothing : ON Filtering: 5  
 Sampling : 1 Min Area: 3 % of largest Peak  
 Start Thrs: 0.2 Max Peaks: 100  
 Stop Thrs : 0 Peak Location: TOP

If leading or trailing edge < 100 prefer < Baseline drop else tangent >  
 Peak separation: 5

Method : Z:\voasrv\HPCHEM1\MSVOA\_Y\methods\82Y042423S.M  
 Title : SW846 8260

Signal : TIC: VY013500.D\data.ms

peak #	R.T. min	first scan	max scan	last scan	PK TY	peak height	corr. area	corr. % max.	% of total
1	2.217	59	65	75	rVB	11581	20162	1.64%	0.293%
2	3.954	343	350	364	rBV2	7414	25570	2.08%	0.372%
3	4.716	463	475	487	rBV	35235	110344	8.97%	1.604%
4	5.741	634	643	654	rBV3	9250	28601	2.33%	0.416%
5	7.716	955	967	972	rBV	190287	450970	36.67%	6.555%
6	7.783	972	978	992	rVB	280876	659196	53.60%	9.581%
7	8.137	1028	1036	1050	rBV	199565	437765	35.60%	6.363%
8	8.685	1117	1126	1141	rBV	458653	904936	73.58%	13.153%
9	10.179	1363	1371	1381	rBV	720674	1229827	100.00%	17.875%
10	11.490	1577	1586	1599	rBV	680641	1127397	91.67%	16.386%
11	12.477	1741	1748	1758	rBV	516410	827530	67.29%	12.028%
12	13.422	1896	1903	1910	rBV	662779	1014797	82.52%	14.750%
13	13.959	1983	1991	1997	rVB	17439	27671	2.25%	0.402%
14	15.312	2205	2213	2220	rBV2	8342	15412	1.25%	0.224%

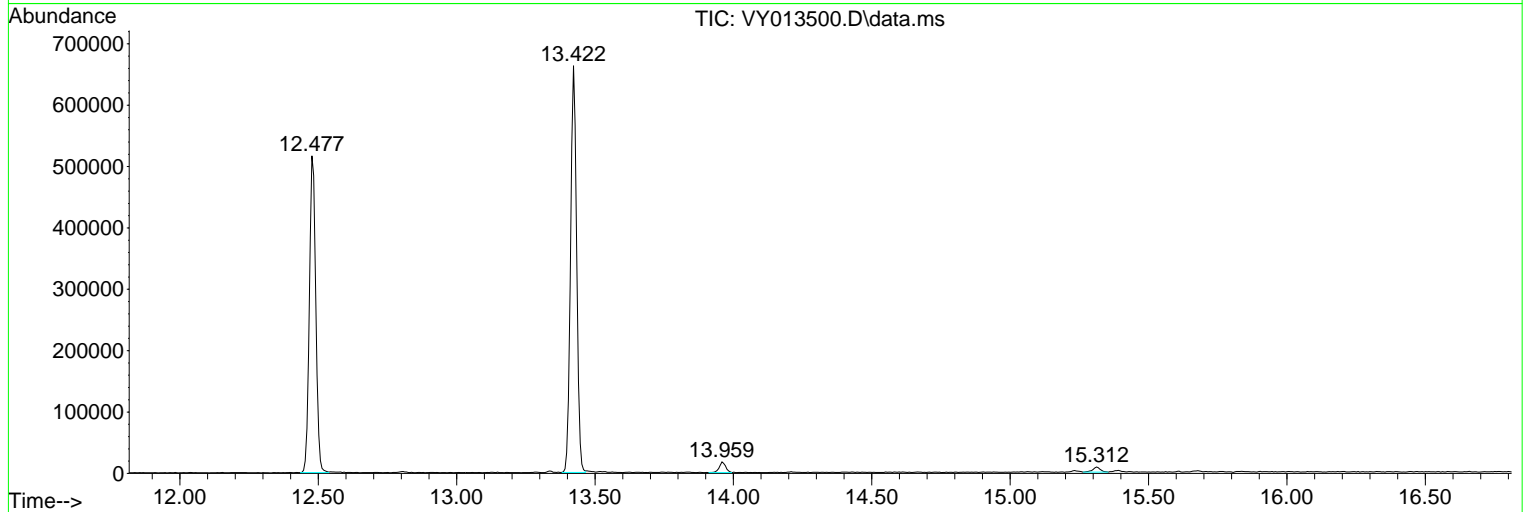
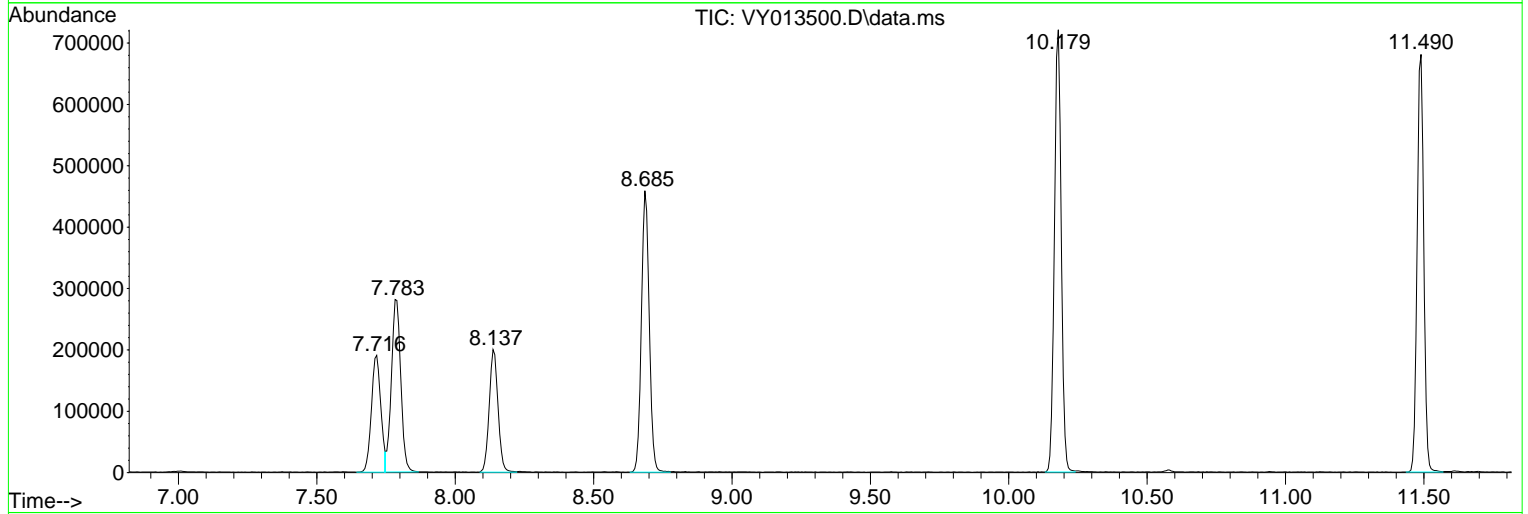
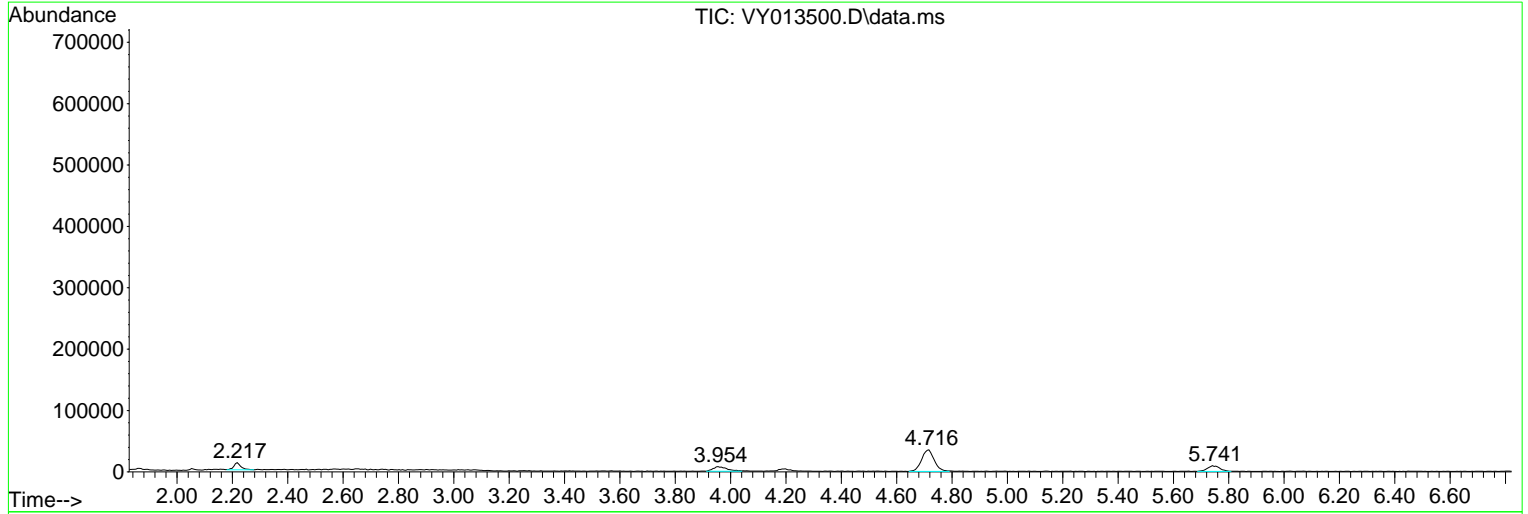
Sum of corrected areas: 6880178

Data Path : Z:\voasrv\HPCHEM1\MSVOA\_Y\Data\VY042723\  
 Data File : VY013500.D  
 Acq On : 27 Apr 2023 18:27  
 Operator : KP/MD  
 Sample : 02470-11  
 Misc : 5.02g/5.0mL/MSVOA\_Y/SOIL  
 ALS Vial : 14 Sample Multiplier: 1

Instrument :  
 MSVOA\_Y  
 ClientSampleId :  
 SB-10-8.5-9.0

Quant Method : Z:\voasrv\HPCHEM1\MSVOA\_Y\methods\82Y042423S.M  
 Quant Title : SW846 8260

TIC Library : C:\Database\NIST20.L  
 TIC Integration Parameters: LSCINT.P



Library Search Compound Report

Data Path : Z:\voasrv\HPCHEM1\MSVOA\_Y\Data\VY042723\  
Data File : VY013500.D  
Acq On : 27 Apr 2023 18:27  
Operator : KP/MD  
Sample : 02470-11  
Misc : 5.02g/5.0mL/MSVOA\_Y/SOIL  
ALS Vial : 14 Sample Multiplier: 1

Instrument :  
MSVOA\_Y  
ClientSampleId :  
SB-10-8.5-9.0

Quant Method : Z:\voasrv\HPCHEM1\MSVOA\_Y\methods\82Y042423S.M  
Quant Title : SW846 8260

TIC Library : C:\Database\NIST0.L  
TIC Integration Parameters: LSCINT.P

No Library Search Compounds Detected

\*\*\*\*\*

Data Path : Z:\voasrv\HPCHEM1\MSVOA\_Y\Data\VY042723\  
Data File : VY013500.D  
Acq On : 27 Apr 2023 18:27  
Operator : KP/MD  
Sample : 02470-11  
Misc : 5.02g/5.0mL/MSVOA\_Y/SOIL  
ALS Vial : 14 Sample Multiplier: 1

Instrument :  
MSVOA\_Y  
ClientSampleId :  
SB-10-8.5-9.0

Quant Method : Z:\voasrv\HPCHEM1\MSVOA\_Y\methods\82Y042423S.M  
Quant Title : SW846 8260

TIC Library : C:\Database\NIST0.L  
TIC Integration Parameters: LSCINT.P

TIC Top Hit name	RT	EstConc	Units	Response	--Internal Standard--			
					#	RT	Resp	Conc

---