

Data Path : Z:\VOASRV\HPCHEM1\MSVOA Y\DATA\VY050420\
 Data File : VY002550.D
 Acq On : 04 May 2020 18:39
 Operator : SY/MD
 Sample : L2456-02
 Misc : 5.00G/5ML/MSVOA Y/SOIL
 ALS Vial : 23 Sample Multiplier: 1

Instrument :
 MSVOA_Y
 ClientSampled :
 201-206

Manual Integrations
 APPROVED

MMDadoda
 5/5/2020 11:29:10 AM

Quant Time: May 05 08:31:03 2020
 Quant Method : Z:\VOASRV\HPCHEM1\MSVOA_Y\METHODS\82Y043020S.M
 Quant Title : SW846 8260
 QLast Update : Mon May 04 12:22:08 2020
 Response via : Initial Calibration

Internal Standards	R.T.	QIon	Response	Conc	Units	Dev(Min)
1) Pentafluorobenzene	7.81	168	293118	50.00	ug/l	0.00
34) 1,4-Difluorobenzene	8.71	114	486604	50.00	ug/l	0.00
63) Chlorobenzene-d5	11.50	117	439446	50.00	ug/l	0.00
72) 1,4-Dichlorobenzene-d4	13.43	152	208877	50.00	ug/l	0.00

System Monitoring Compounds

33) 1,2-Dichloroethane-d4	8.16	65	147863	60.00	ug/l	0.00
Spiked Amount	50.000		Recovery	=	120.00%	
35) Dibromofluoromethane	7.74	113	146373	52.60	ug/l	0.00
Spiked Amount	50.000		Recovery	=	105.20%	
50) Toluene-d8	10.19	98	568224	52.29	ug/l	0.00
Spiked Amount	50.000		Recovery	=	104.58%	
62) 4-Bromofluorobenzene	12.49	95	184160	49.94	ug/l	0.00
Spiked Amount	50.000		Recovery	=	99.88%	

Target Compounds

						Qvalue
11) Tert butyl alcohol	4.98	59	12794	50.457	ug/l #	86
16) Acetone	3.97	43	4523	8.892	ug/l	89
20) Methylene Chloride	4.74	84	14931	5.249	ug/l	91
39) Methylcyclohexane	9.19	83	7262	1.348	ug/l	96
52) Toluene	10.25	92	133304	17.605	ug/l	99
67) Ethyl Benzene	11.60	91	332971	22.691	ug/l	100
68) m/p-Xylenes	11.70	106	354119	62.369	ug/l	100
69) o-Xylene	12.03	106	263573	49.579	ug/l	100
73) Isopropylbenzene	12.33	105	28427	2.100	ug/l	100
78) n-propylbenzene	12.67	91	189596	12.069	ug/l	99
80) 1,3,5-Trimethylbenzene	12.81	105	204078	18.187	ug/l	100
84) 1,2,4-Trimethylbenzene	13.13	105	618036	55.264	ug/l	99
86) p-Isopropyltoluene	13.37	119	17474	1.366	ug/l	99
89) n-Butylbenzene	13.70	91	40148m	3.447	ug/l	
95) Naphthalene	15.24	128	115196	15.228	ug/l	99

(#) = qualifier out of range (m) = manual integration (+) = signals summed

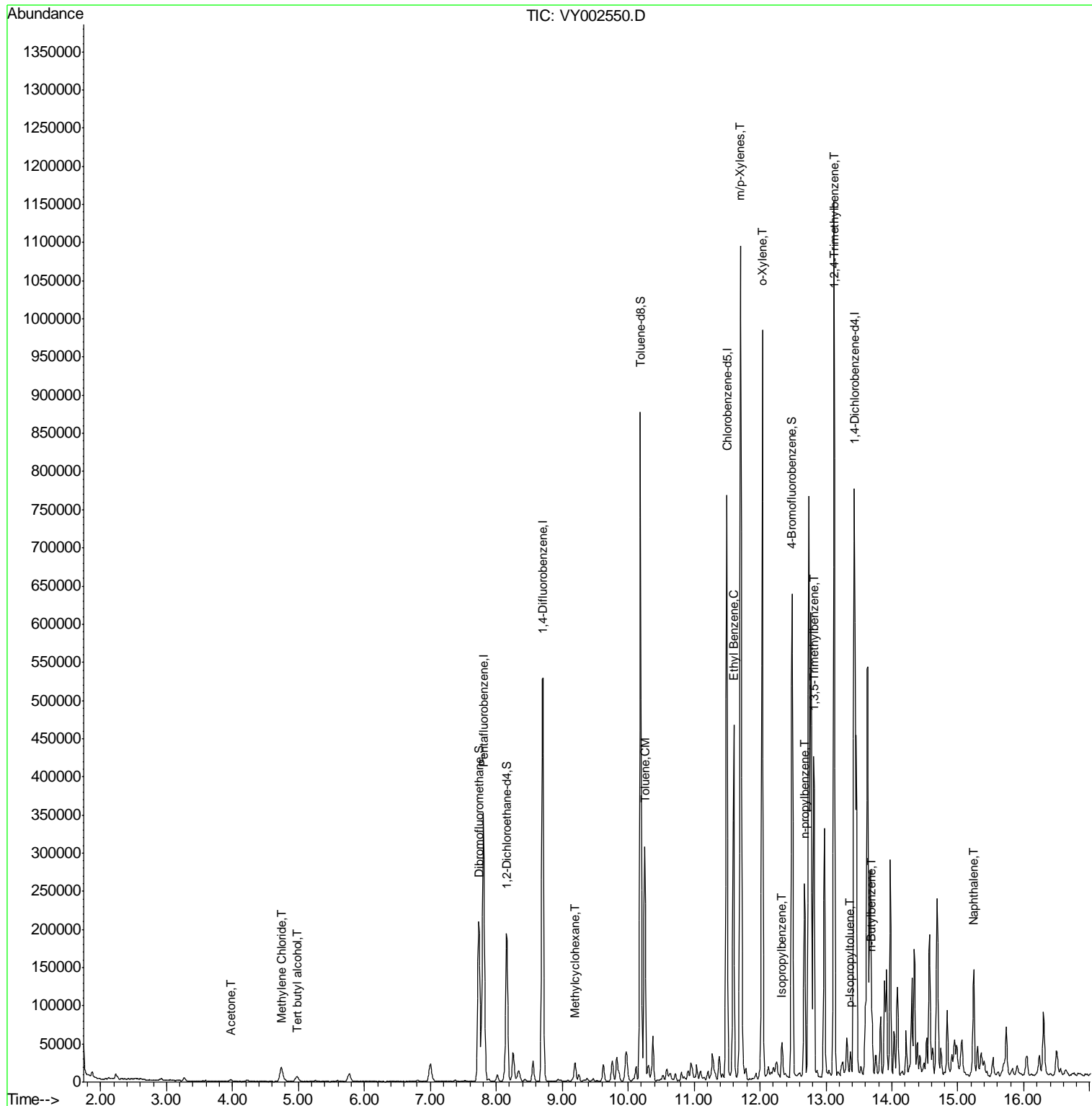
Data Path : Z:\VOASRV\HPCHEM1\MSVOA Y\DATA\VY050420\
 Data File : VY002550.D
 Acq On : 04 May 2020 18:39
 Operator : SY/MD
 Sample : L2456-02
 Misc : 5.00G/5ML/MSVOA Y/SOIL
 ALS Vial : 23 Sample Multiplier: 1

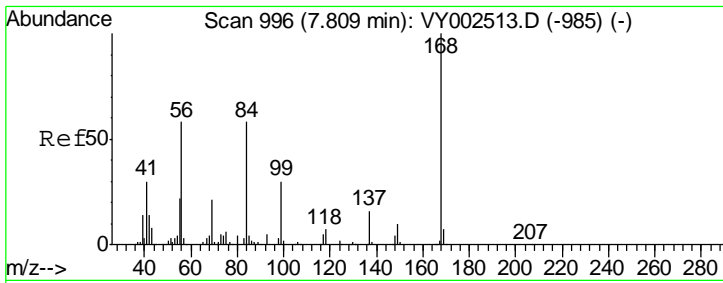
Instrument :
 MSVOA_Y
 Client Sampled :
 201-206

Manual Integrations
 APPROVED

MMDadoda
 5/5/2020 11:29:10 AM

Quant Time: May 05 08:31:03 2020
 Quant Method : Z:\VOASRV\HPCHEM1\MSVOA_Y\METHODS\82Y043020S.M
 Quant Title : SW846 8260
 QLast Update : Mon May 04 12:22:08 2020
 Response via : Initial Calibration





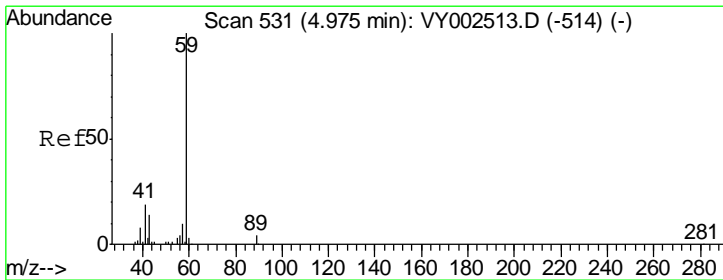
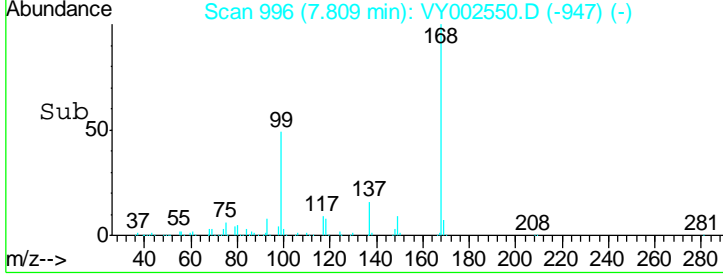
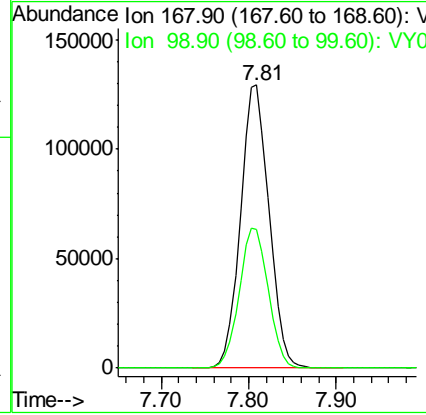
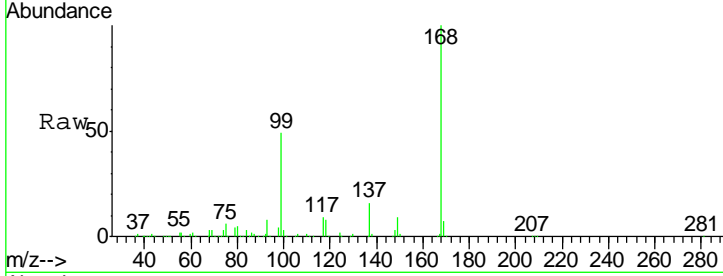
#1
 Pentafluorobenzene
 Concen: 50.000 ug/l
 RT: 7.81 min Scan# 996
 Delta R.T. -0.00 min
 Lab File: VY002550.D
 Acq: 04 May 2020 18:39

Instrument :
 MSVOA_Y
ClientSampled :
 201-206

Tgt Ion	Resp	Lower	Upper
168	100		
99	48.9	39.2	58.8

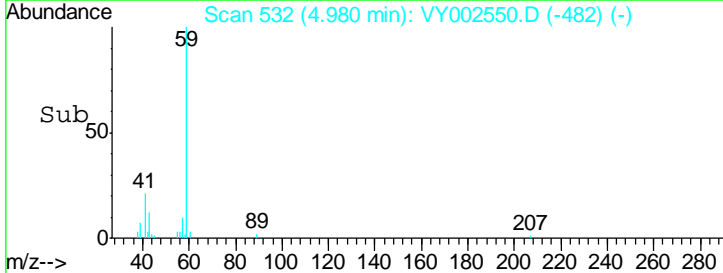
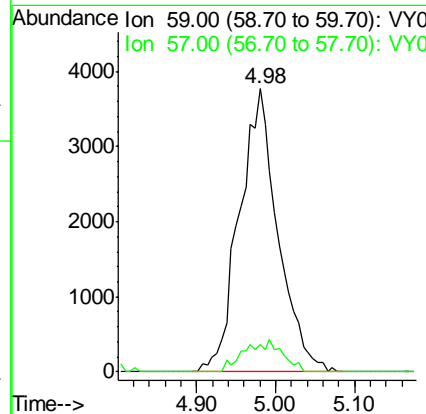
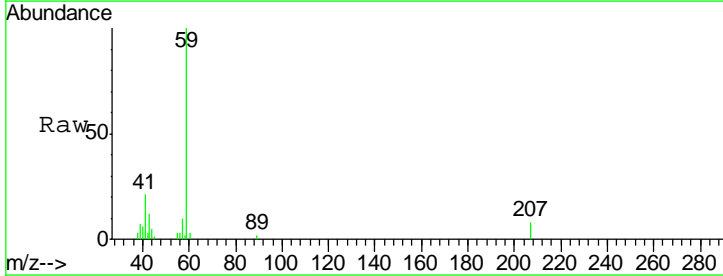
Manual Integrations
APPROVED

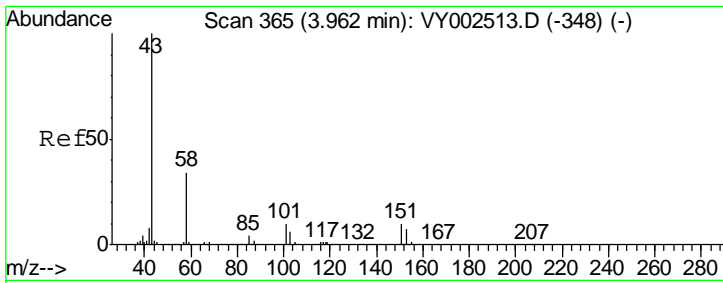
MMDadoda
 5/5/2020 11:29:10 AM



#11
 Tert butyl alcohol
 Concen: 50.457 ug/l
 RT: 4.98 min Scan# 532
 Delta R.T. 0.01 min
 Lab File: VY002550.D
 Acq: 04 May 2020 18:39

Tgt Ion	Resp	Lower	Upper
59	100		
57	4.7	7.8	11.6#





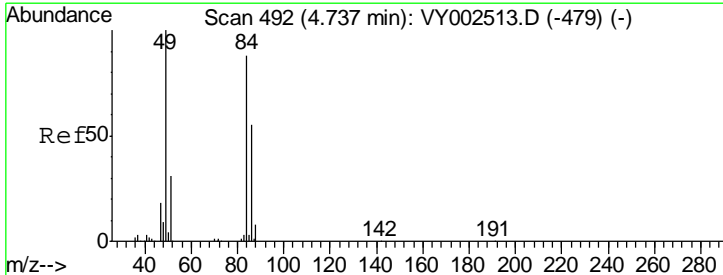
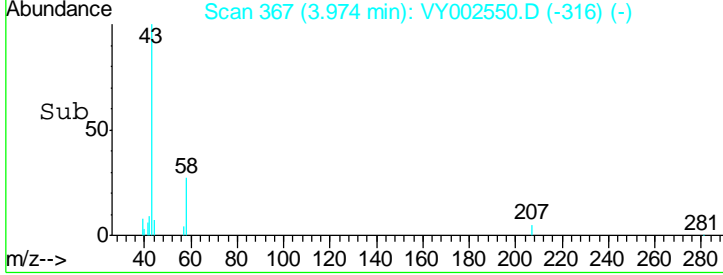
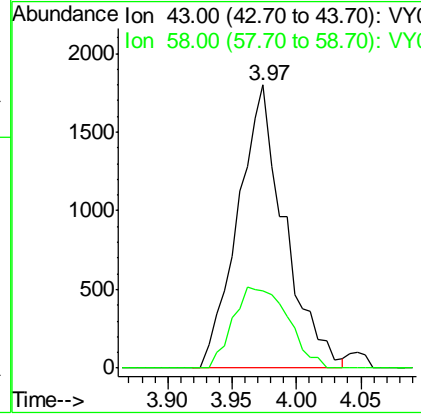
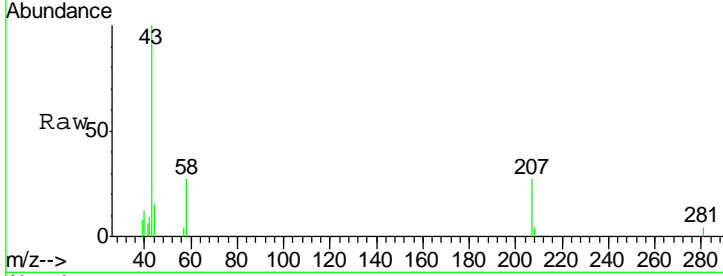
#16
 Acetone
 Concen: 8.892 ug/l
 RT: 3.97 min Scan# 367
 Delta R.T. 0.01 min
 Lab File: VY002550.D
 Acq: 04 May 2020 18:39

Instrument :
 MSVOA_Y
ClientSampled :
 201-206

Tgt Ion	Ratio	Lower	Upper
43	100		
58	27.2	26.9	40.3

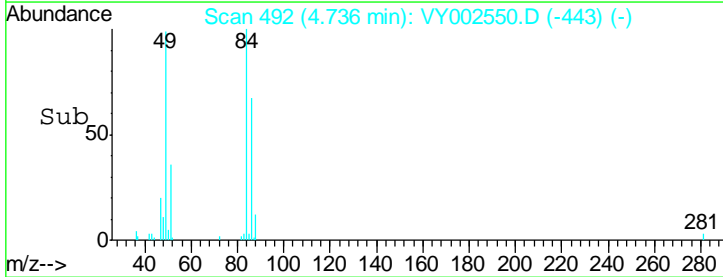
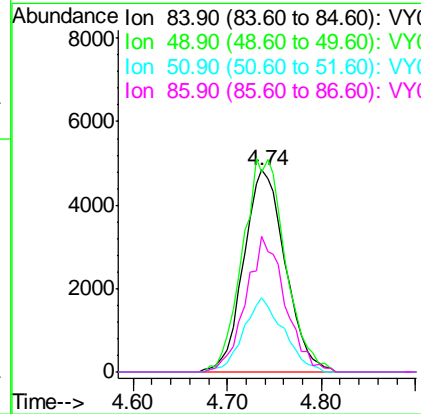
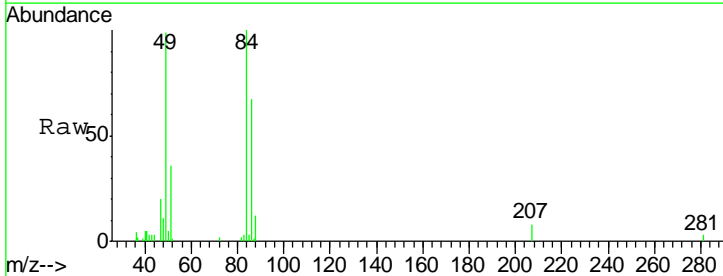
Manual Integrations
APPROVED

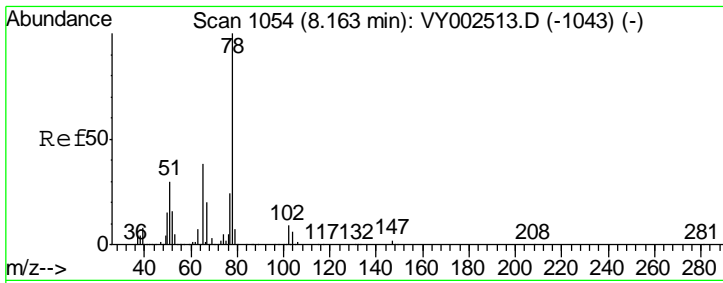
MMDadoda
 5/5/2020 11:29:10 AM



#20
 Methylene Chloride
 Concen: 5.249 ug/l
 RT: 4.74 min Scan# 492
 Delta R.T. -0.00 min
 Lab File: VY002550.D
 Acq: 04 May 2020 18:39

Tgt Ion	Ratio	Lower	Upper
84	100		
49	98.7	90.5	135.7
51	36.5	28.3	42.5
86	67.1	49.9	74.9





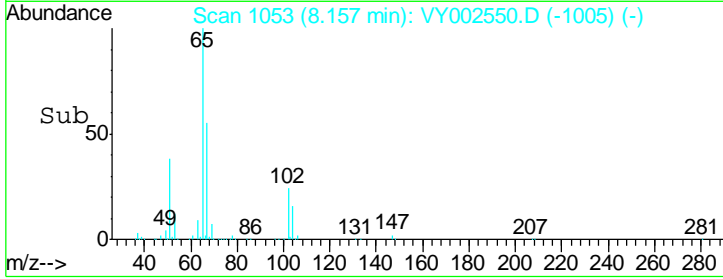
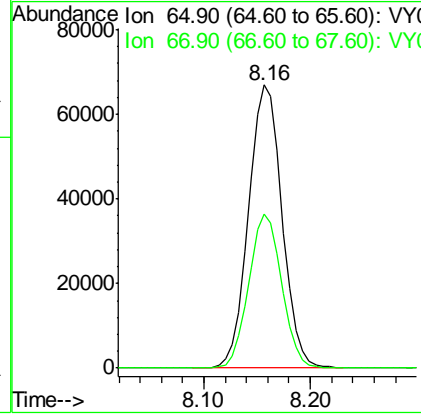
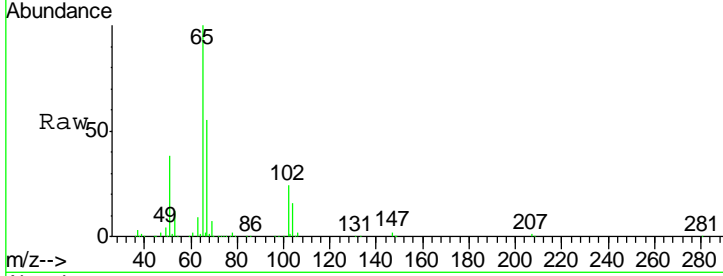
#33
 1,2-Dichloroethane-d4
 Concen: 59.995 ug/l
 RT: 8.16 min Scan# 1053
 Delta R.T. -0.01 min
 Lab File: VY002550.D
 Acq: 04 May 2020 18:39

Instrument :
 MSVOA_Y
ClientSampled :
 201-206

Tgt Ion	Resp	Lower	Upper
65	100		
67	53.9	0.0	107.2

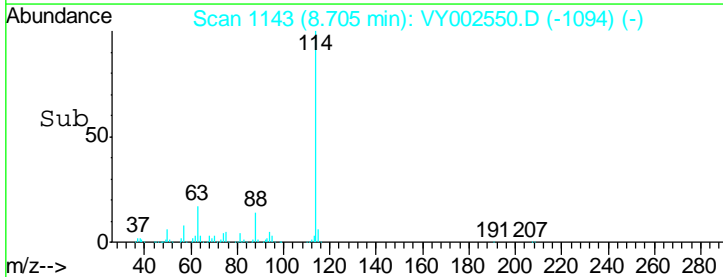
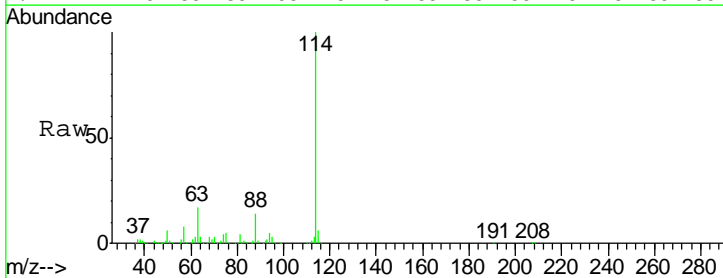
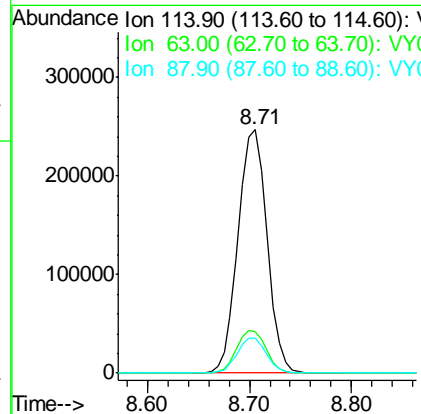
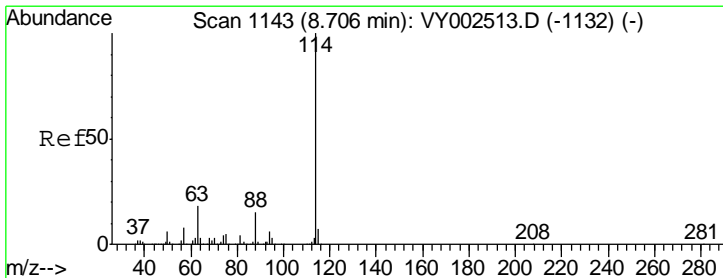
Manual Integrations
APPROVED

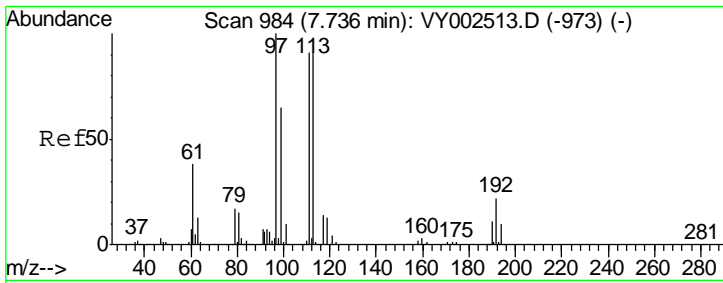
MMDadoda
 5/5/2020 11:29:10 AM



#34
 1,4-Difluorobenzene
 Concen: 50.000 ug/l
 RT: 8.71 min Scan# 1143
 Delta R.T. -0.00 min
 Lab File: VY002550.D
 Acq: 04 May 2020 18:39

Tgt Ion	Resp	Lower	Upper
114	100		
63	17.2	0.0	36.4
88	14.4	0.0	29.6





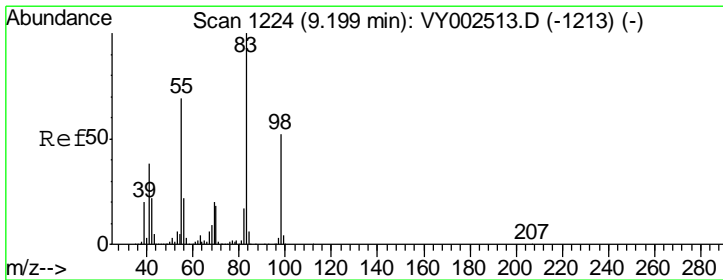
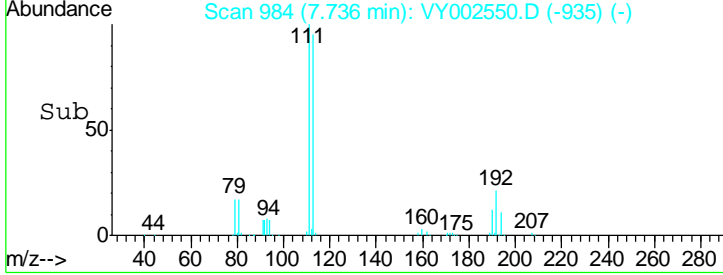
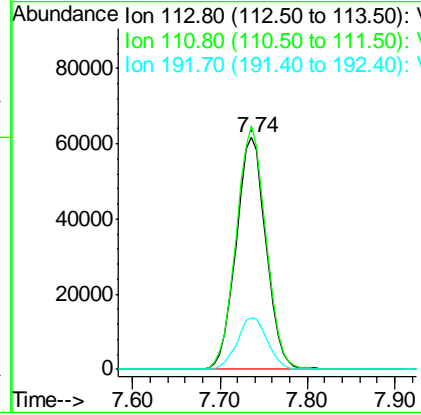
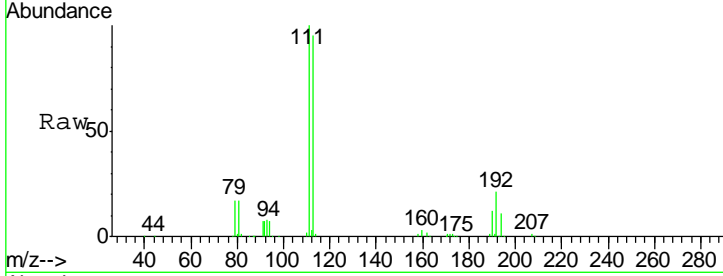
#35
 Dibromofluoromethane
 Concen: 52.597 ug/l
 RT: 7.74 min Scan# 984
 Delta R.T. -0.00 min
 Lab File: VY002550.D
 Acq: 04 May 2020 18:39

Instrument :
 MSVOA_Y
 ClientSampled :
 201-206

Tgt Ion	Resp	Lower	Upper
113	146373		
113	100		
111	104.6	81.8	122.6
192	22.7	18.2	27.4

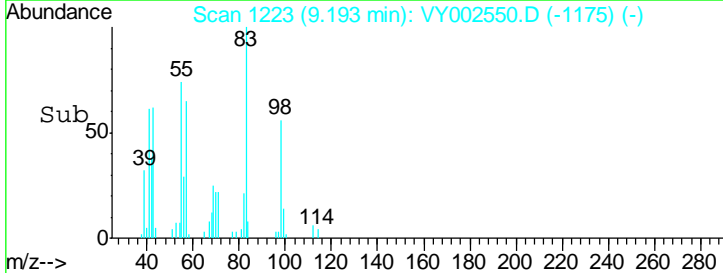
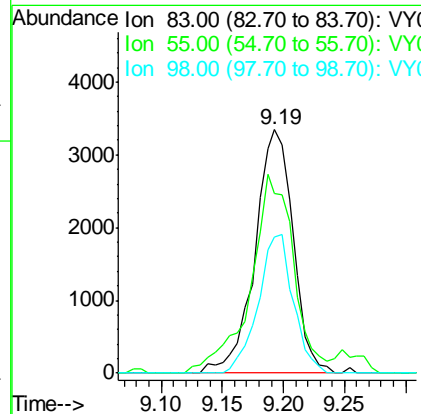
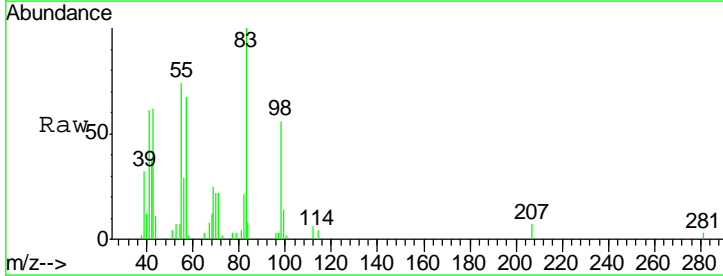
Manual Integrations
 APPROVED

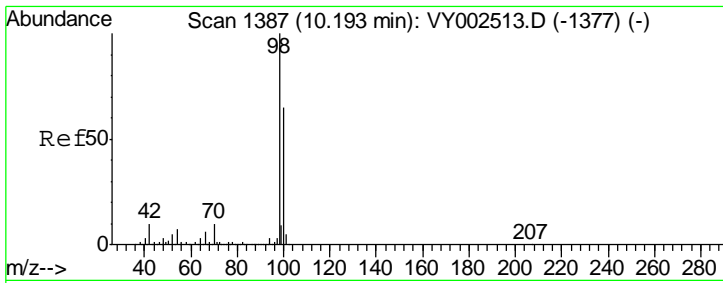
MMDadoda
 5/5/2020 11:29:10 AM



#39
 Methylcyclohexane
 Concen: 1.348 ug/l
 RT: 9.19 min Scan# 1223
 Delta R.T. -0.01 min
 Lab File: VY002550.D
 Acq: 04 May 2020 18:39

Tgt Ion	Resp	Lower	Upper
83	7262		
83	100		
55	71.1	55.4	83.0
98	56.1	41.3	61.9





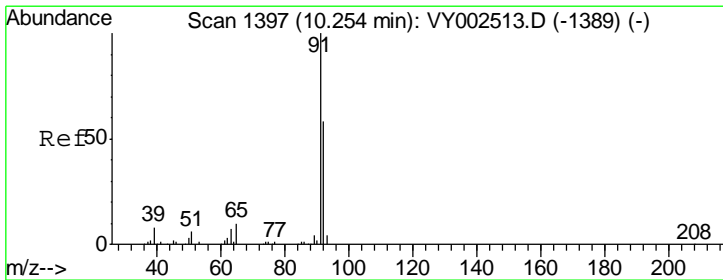
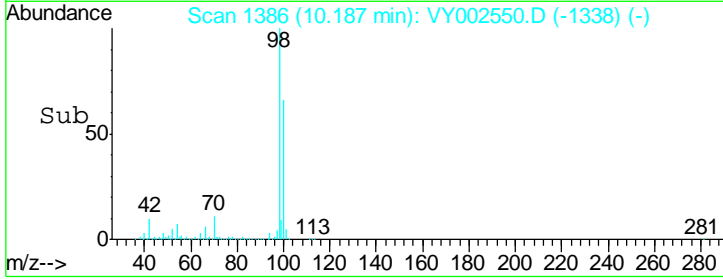
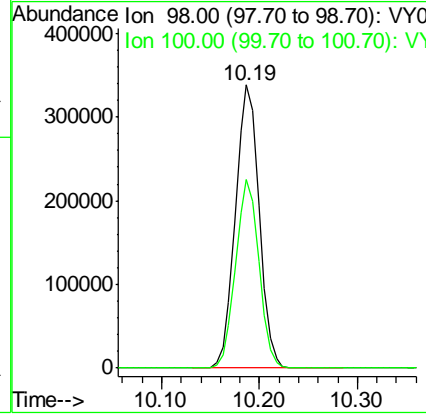
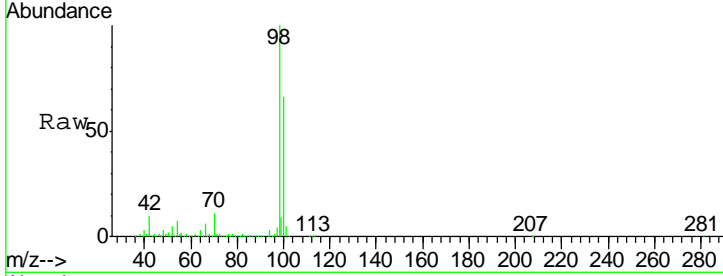
#50
 Toluene-d8
 Concen: 52.286 ug/l
 RT: 10.19 min Scan# 1386
 Delta R.T. -0.01 min
 Lab File: VY002550.D
 Acq: 04 May 2020 18:39

Instrument :
 MSVOA_Y
 ClientSampled :
 201-206

Tgt Ion	Resp	Lower	Upper
98	100		
100	65.5	52.2	78.2

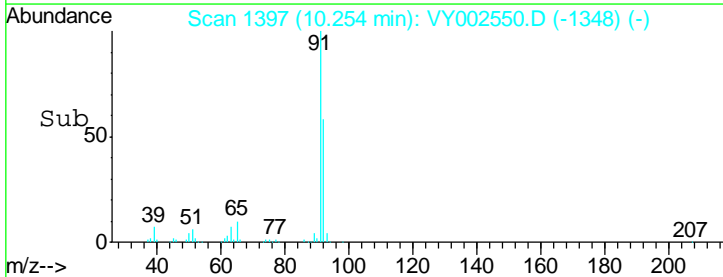
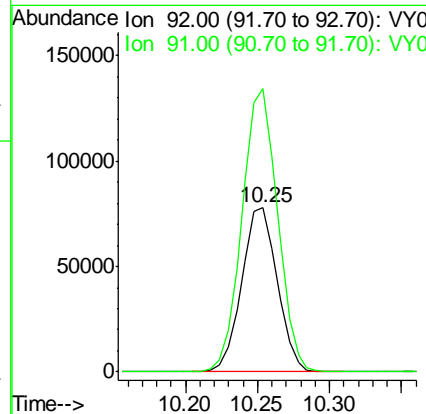
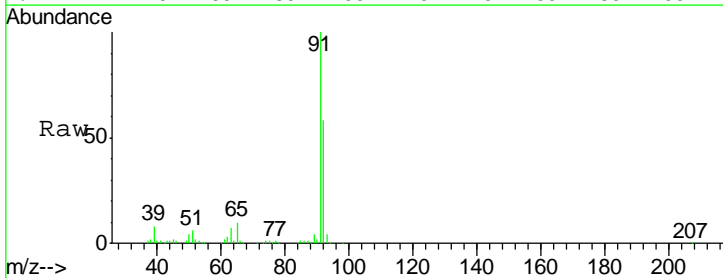
Manual Integrations
 APPROVED

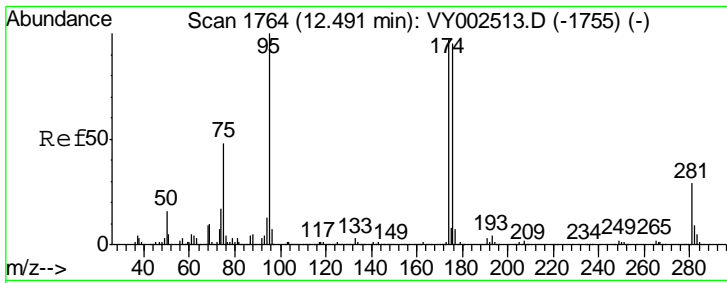
MMDadoda
 5/5/2020 11:29:10 AM



#52
 Toluene
 Concen: 17.605 ug/l
 RT: 10.25 min Scan# 1397
 Delta R.T. -0.00 min
 Lab File: VY002550.D
 Acq: 04 May 2020 18:39

Tgt Ion	Resp	Lower	Upper
92	100		
91	172.3	139.3	208.9





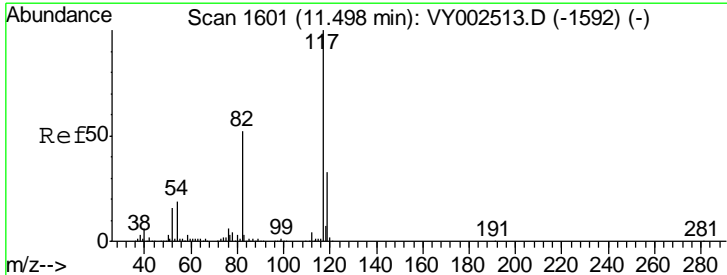
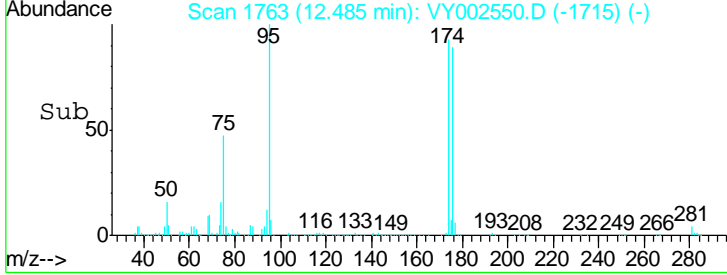
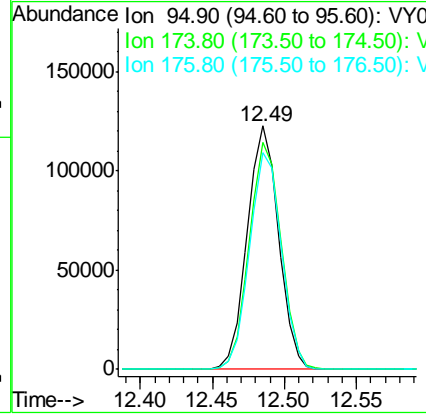
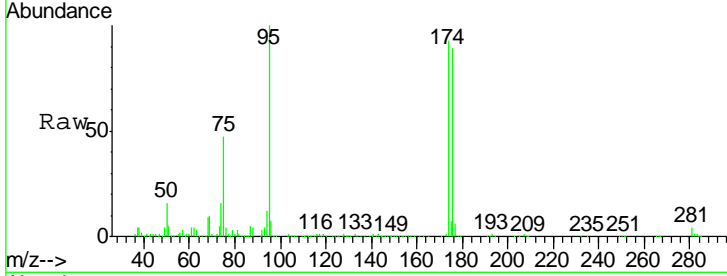
#62
 4-Bromofluorobenzene
 Concen: 49.940 ug/l
 RT: 12.49 min Scan# 1763
 Delta R.T. -0.01 min
 Lab File: VY002550.D
 Acq: 04 May 2020 18:39

Instrument : MSVOA_Y
 ClientSampled : 201-206

Tgt Ion	Resp	Lower	Upper
95	184160		
95	100		
174	94.8	0.0	188.8
176	90.3	0.0	183.2

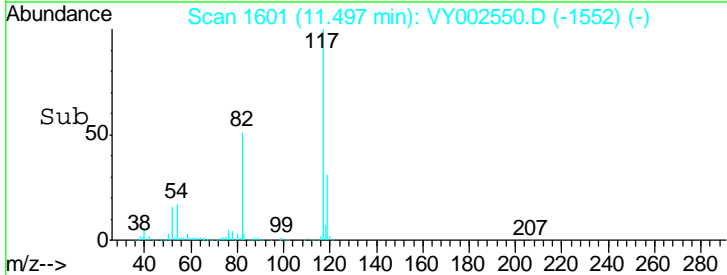
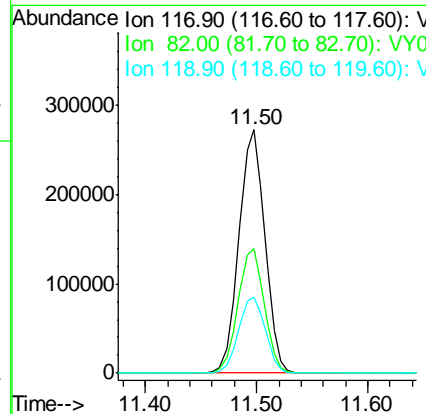
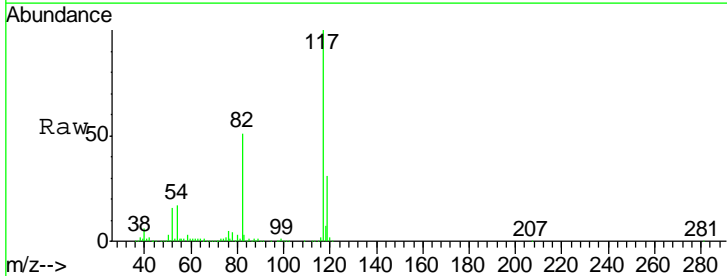
Manual Integrations
 APPROVED

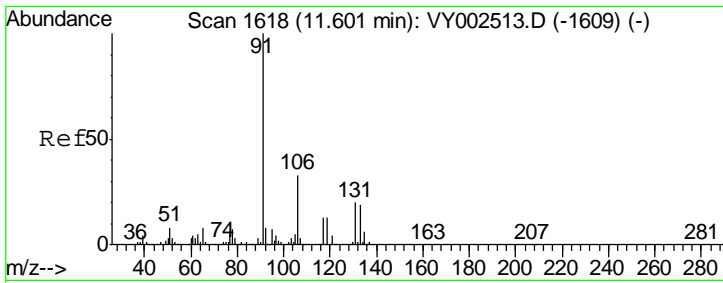
MMDadoda
 5/5/2020 11:29:10 AM



#63
 Chlorobenzene-d5
 Concen: 50.000 ug/l
 RT: 11.50 min Scan# 1601
 Delta R.T. -0.00 min
 Lab File: VY002550.D
 Acq: 04 May 2020 18:39

Tgt Ion	Resp	Lower	Upper
117	439446		
117	100		
82	50.8	41.3	61.9
119	31.0	26.0	39.0





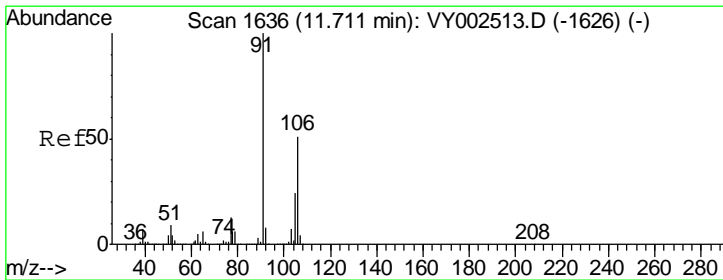
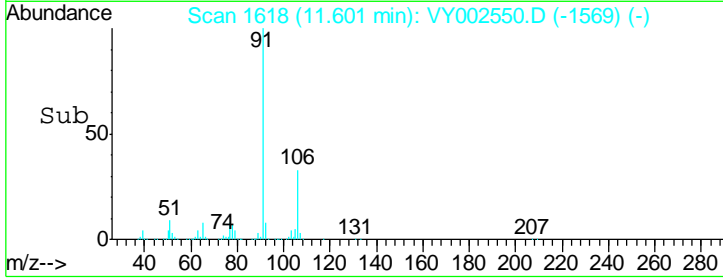
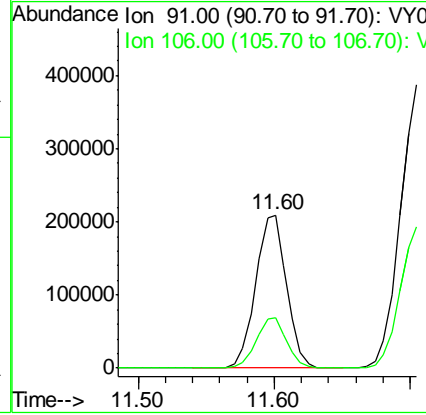
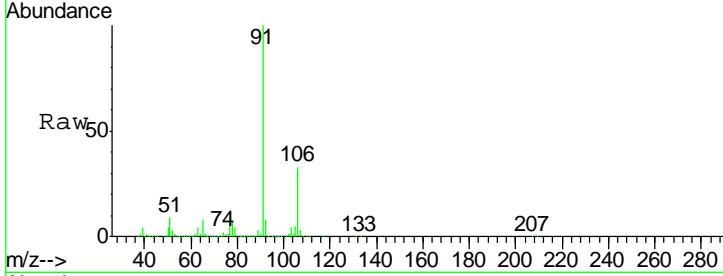
#67
 Ethyl Benzene
 Concen: 22.691 ug/l
 RT: 11.60 min Scan# 1618
 Delta R.T. -0.00 min
 Lab File: VY002550.D
 Acq: 04 May 2020 18:39

Instrument :
 MSVOA_Y
 ClientSampled :
 201-206

Tgt Ion	Resp	Lower	Upper
91	100		
106	32.6	26.1	39.1

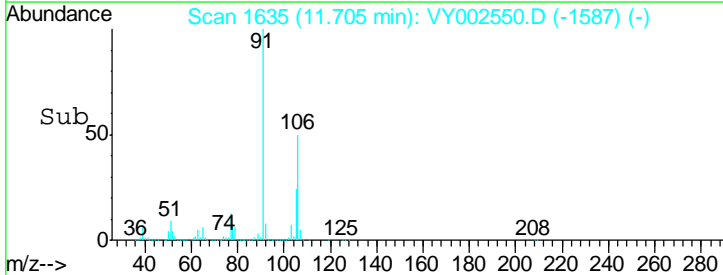
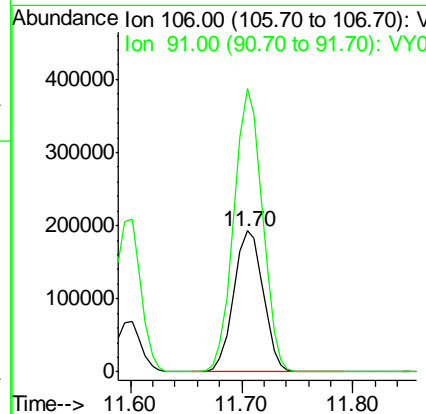
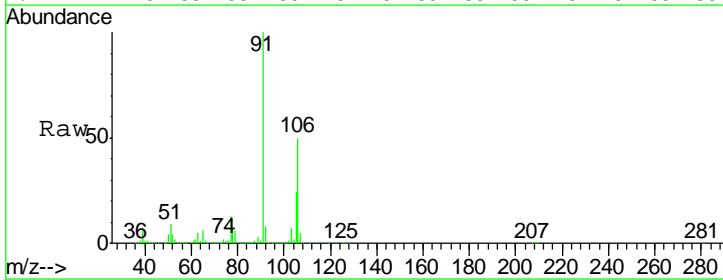
Manual Integrations
 APPROVED

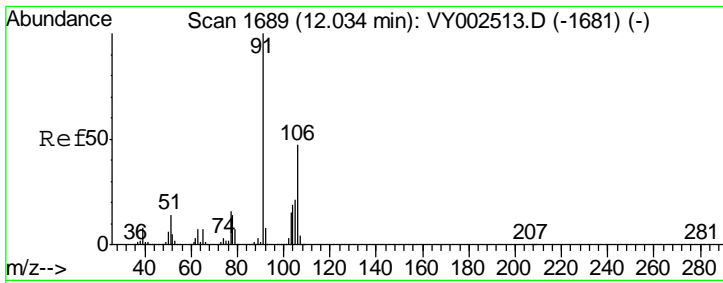
MMDadoda
 5/5/2020 11:29:10 AM



#68
 m/p-Xylenes
 Concen: 62.369 ug/l
 RT: 11.70 min Scan# 1635
 Delta R.T. -0.01 min
 Lab File: VY002550.D
 Acq: 04 May 2020 18:39

Tgt Ion	Resp	Lower	Upper
106	100		
91	194.1	155.2	232.8





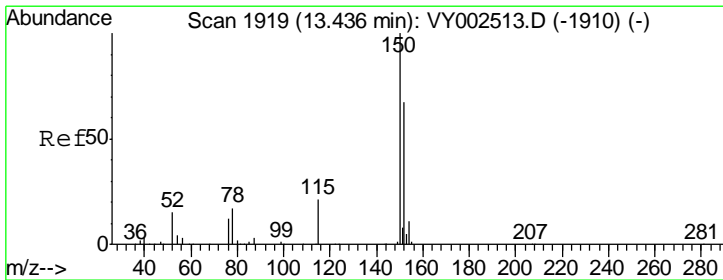
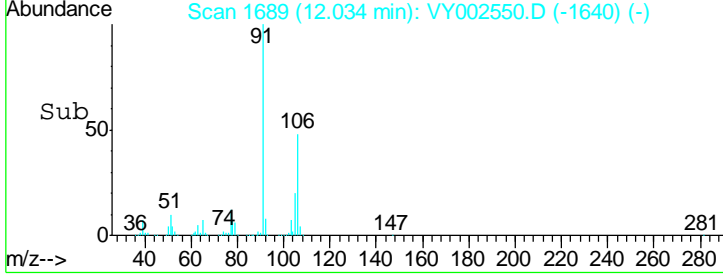
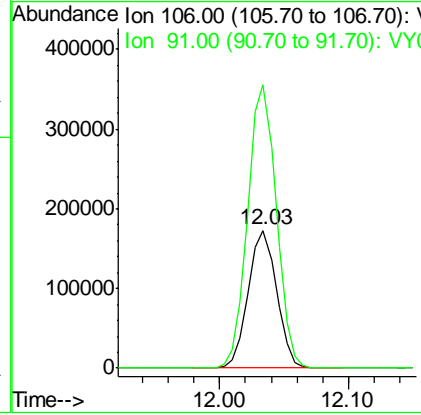
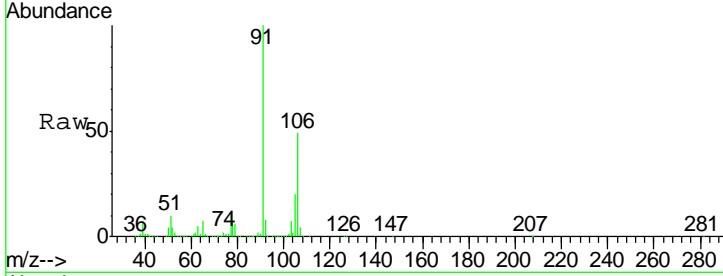
#69
 o-Xylene
 Concen: 49.579 ug/l
 RT: 12.03 min Scan# 1689
 Delta R.T. -0.00 min
 Lab File: VY002550.D
 Acq: 04 May 2020 18:39

Instrument : MSVOA_Y
 ClientSampled : 201-206

Tgt Ion	Resp	Lower	Upper
106	263573		
106	100		
91	206.8	103.8	311.3

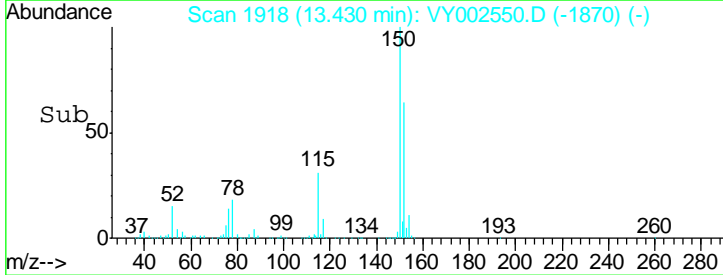
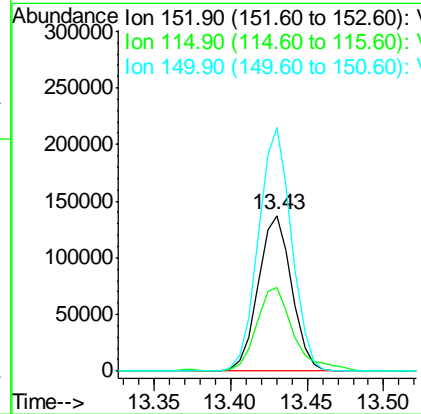
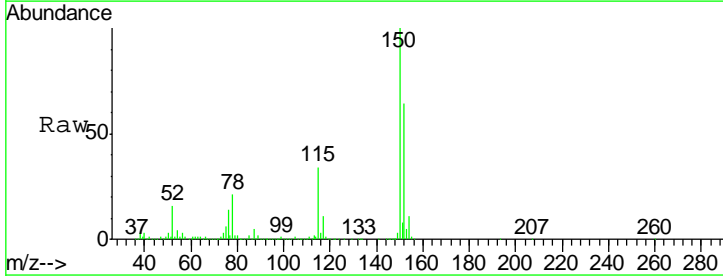
Manual Integrations
 APPROVED

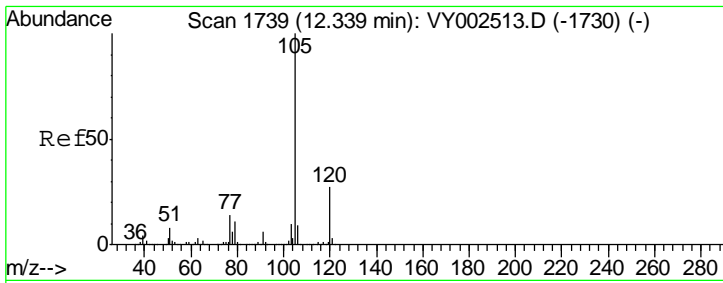
MMDadoda
 5/5/2020 11:29:10 AM



#72
 1,4-Dichlorobenzene-d4
 Concen: 50.000 ug/l
 RT: 13.43 min Scan# 1918
 Delta R.T. -0.01 min
 Lab File: VY002550.D
 Acq: 04 May 2020 18:39

Tgt Ion	Resp	Lower	Upper
152	208877		
152	100		
115	59.0	27.5	82.4
150	155.1	0.0	346.4





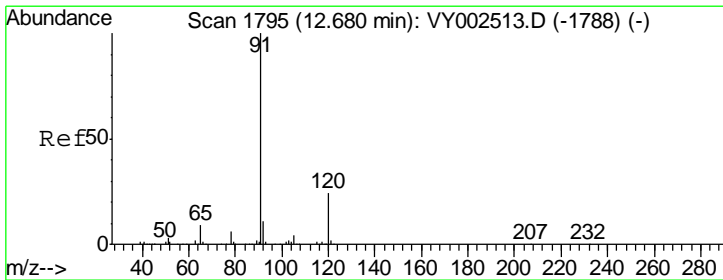
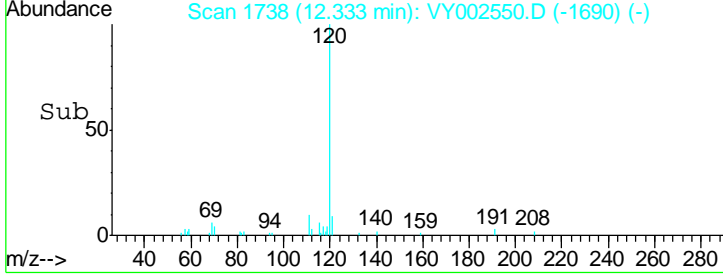
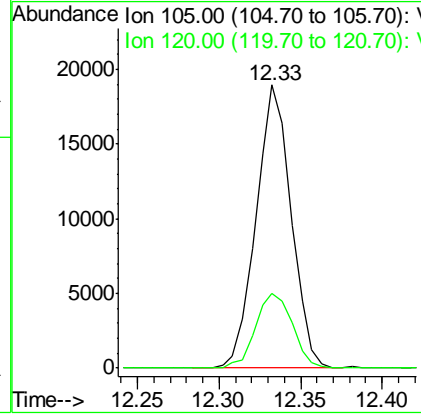
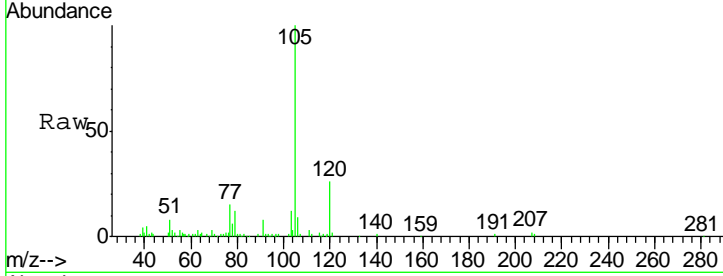
#73
 Isopropylbenzene
 Concen: 2.100 ug/l
 RT: 12.33 min Scan# 1738
 Delta R.T. -0.01 min
 Lab File: VY002550.D
 Acq: 04 May 2020 18:39

Instrument : MSVOA_Y
 ClientSampled : 201-206

Tgt Ion	Resp	Lower	Upper
105	100		
120	27.8	13.8	41.3

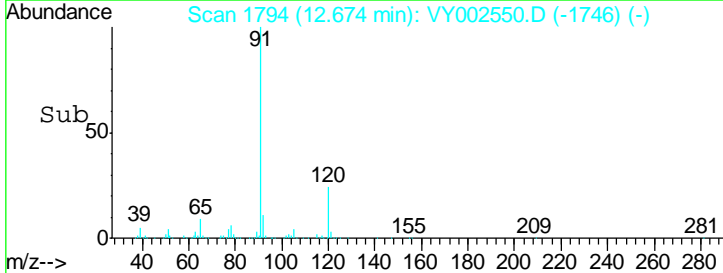
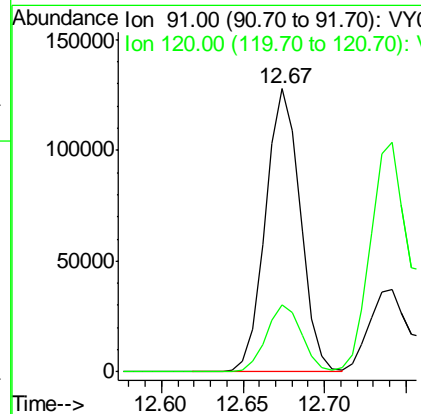
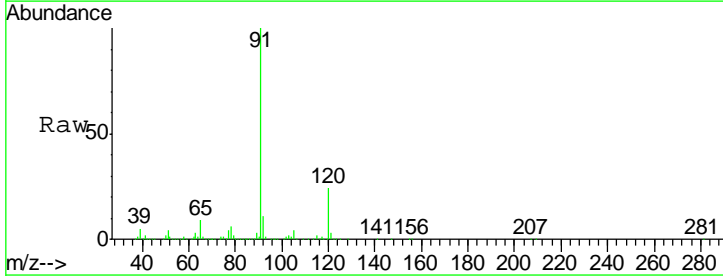
Manual Integrations
 APPROVED

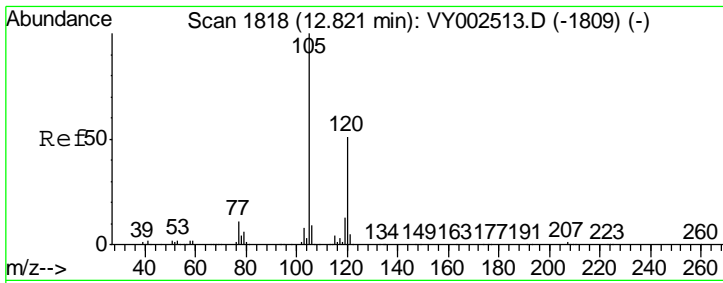
MMDadoda
 5/5/2020 11:29:10 AM



#78
 n-propylbenzene
 Concen: 12.069 ug/l
 RT: 12.67 min Scan# 1794
 Delta R.T. -0.01 min
 Lab File: VY002550.D
 Acq: 04 May 2020 18:39

Tgt Ion	Resp	Lower	Upper
91	100		
120	24.0	12.2	36.4





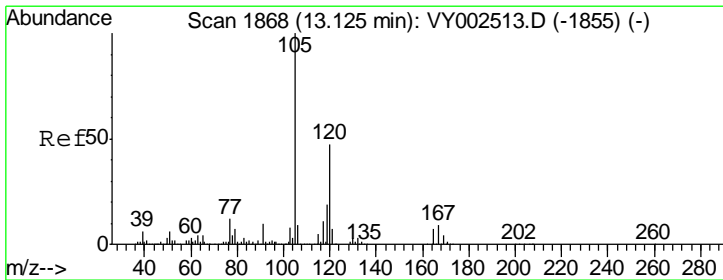
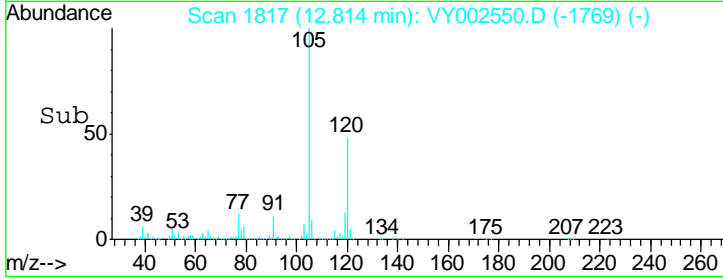
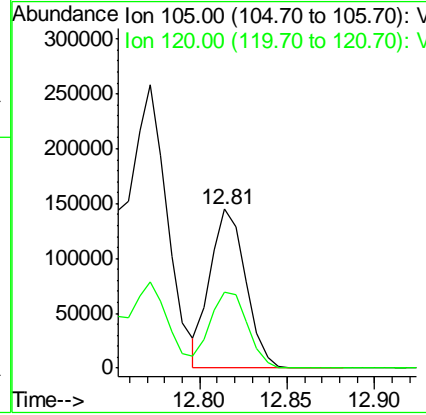
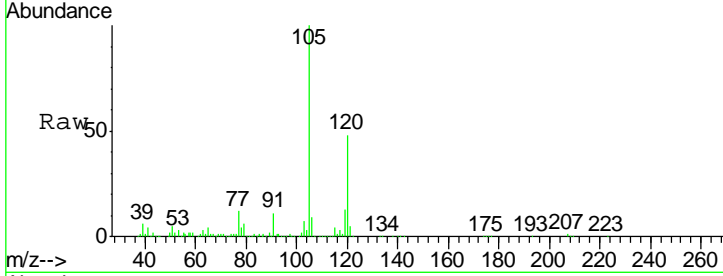
#80
 1,3,5-Trimethylbenzene
 Concen: 18.187 ug/l
 RT: 12.81 min Scan# 1817
 Delta R.T. -0.01 min
 Lab File: VY002550.D
 Acq: 04 May 2020 18:39

Instrument : MSVOA_Y
 Client Sampled : 201-206

Tgt Ion	Resp	Lower	Upper
105	100		
120	50.6	25.3	75.9

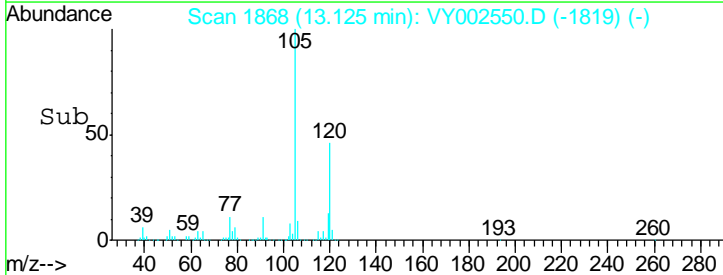
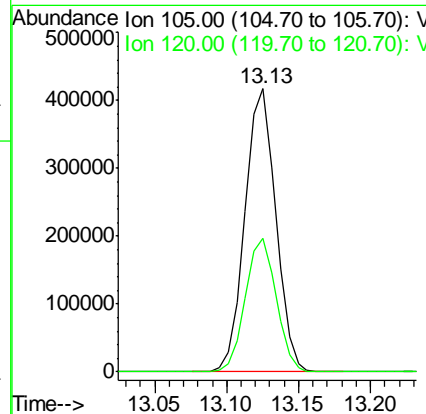
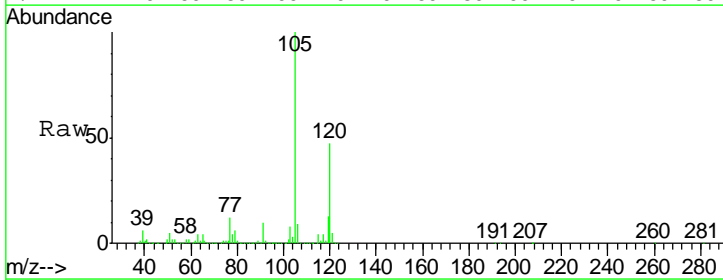
Manual Integrations
 APPROVED

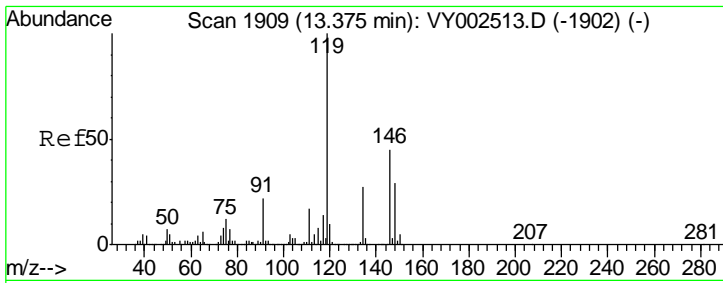
MMDadoda
 5/5/2020 11:29:10 AM



#84
 1,2,4-Trimethylbenzene
 Concen: 55.264 ug/l
 RT: 13.13 min Scan# 1868
 Delta R.T. -0.00 min
 Lab File: VY002550.D
 Acq: 04 May 2020 18:39

Tgt Ion	Resp	Lower	Upper
105	100		
120	47.3	23.4	70.3





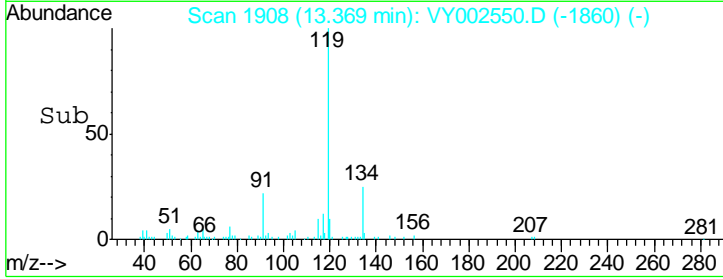
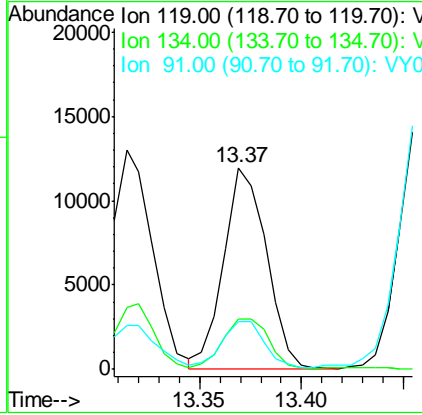
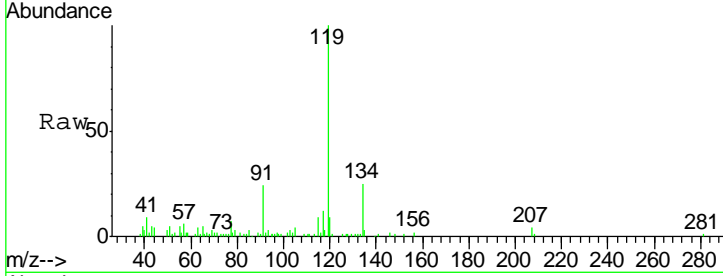
#86
 p-Isopropyltoluene
 Concen: 1.366 ug/l
 RT: 13.37 min Scan# 1908
 Delta R.T. -0.01 min
 Lab File: VY002550.D
 Acq: 04 May 2020 18:39

Instrument : MSVOA_Y
 ClientSampled : 201-206

Tgt Ion	Resp	Lower	Upper
119	17474		
134	27.2	13.5	40.5
91	22.6	10.9	32.9

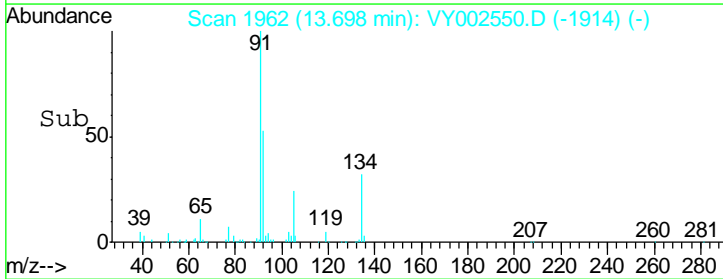
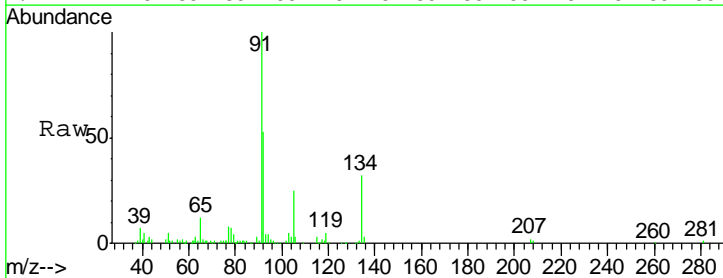
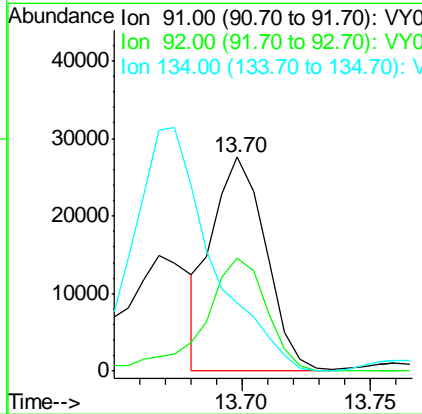
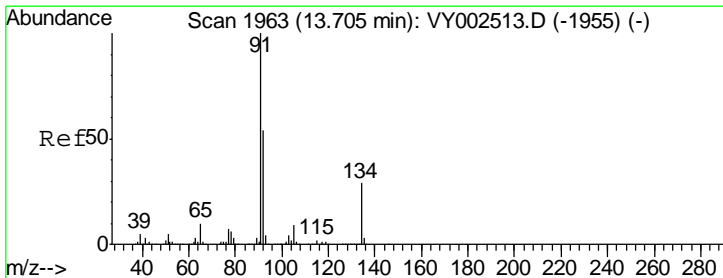
Manual Integrations
 APPROVED

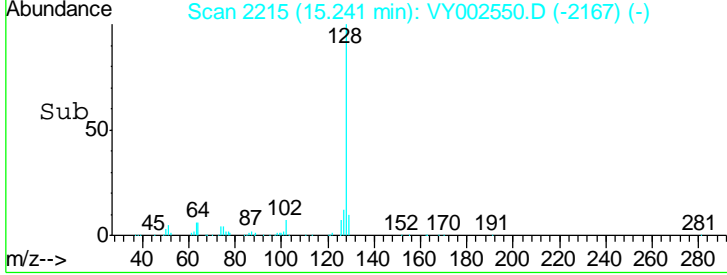
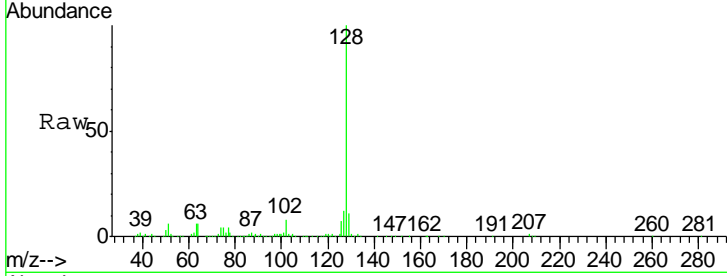
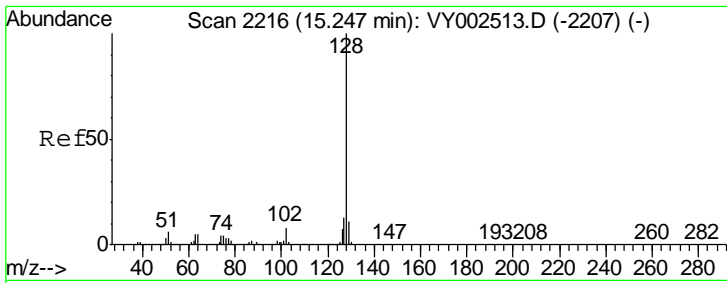
MMDadoda
 5/5/2020 11:29:10 AM



#89
 n-Butylbenzene
 Concen: 3.447 ug/l m
 RT: 13.70 min Scan# 1962
 Delta R.T. -0.01 min
 Lab File: VY002550.D
 Acq: 04 May 2020 18:39

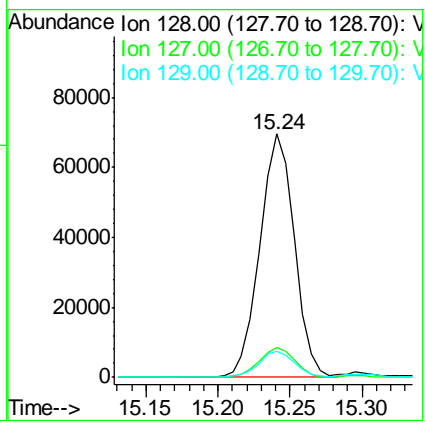
Tgt Ion	Resp	Lower	Upper
91	40148		
92	60.9	27.1	81.3
134	0.0	14.4	43.0#





#95
 Naphthalene
 Concen: 15.228 ug/l
 RT: 15.24 min Scan# 2215
 Delta R.T. -0.01 min
 Lab File: VY002550.D
 Acq: 04 May 2020 18:39

Tot Ion	Ratio	Lower	Upper
128	100		
127	12.7	10.5	15.7
129	11.4	8.8	13.2



Instrument : MSVOA_Y
 Client Sampled : 201-206

Manual Integrations
APPROVED
 MMDadoda
 5/5/2020 11:29:10 AM