

Data Path : Z:\voasrv\HPCHEM1\MSVOA\_Y\Data\VY050924\  
 Data File : VY018210.D  
 Acq On : 09 May 2024 15:18  
 Operator : SY/MD  
 Sample : P2408-04  
 Misc : 5.02g/5.0mL/MSVOA\_Y/SOIL/B  
 ALS Vial : 13 Sample Multiplier: 1

**Instrument :**  
 MSVOA\_Y  
**ClientSampleId :**  
 ETGI-285

Quant Time: May 10 01:18:14 2024  
 Quant Method : Z:\voasrv\HPCHEM1\MSVOA\_Y\methods\82Y050724S.M  
 Quant Title : SW846 8260  
 QLast Update : Wed May 08 01:40:14 2024  
 Response via : Initial Calibration

Compound	R.T.	QIon	Response	Conc	Units	Dev(Min)
Internal Standards						
1) Pentafluorobenzene	7.782	168	162543	50.000	ug/l	0.00
34) 1,4-Difluorobenzene	8.685	114	300730	50.000	ug/l	0.00
63) Chlorobenzene-d5	11.489	117	257086	50.000	ug/l	0.00
72) 1,4-Dichlorobenzene-d4	13.428	152	95049	50.000	ug/l	0.00
System Monitoring Compounds						
33) 1,2-Dichloroethane-d4	8.136	65	71499	59.793	ug/l	0.00
Spiked Amount	50.000	Range	50 - 163	Recovery	=	119.580%
35) Dibromofluoromethane	7.709	113	84777	53.640	ug/l	0.00
Spiked Amount	50.000	Range	54 - 147	Recovery	=	107.280%
50) Toluene-d8	10.178	98	335379	53.850	ug/l	0.00
Spiked Amount	50.000	Range	58 - 134	Recovery	=	107.700%
62) 4-Bromofluorobenzene	12.483	95	98141	48.795	ug/l	0.00
Spiked Amount	50.000	Range	30 - 143	Recovery	=	97.580%

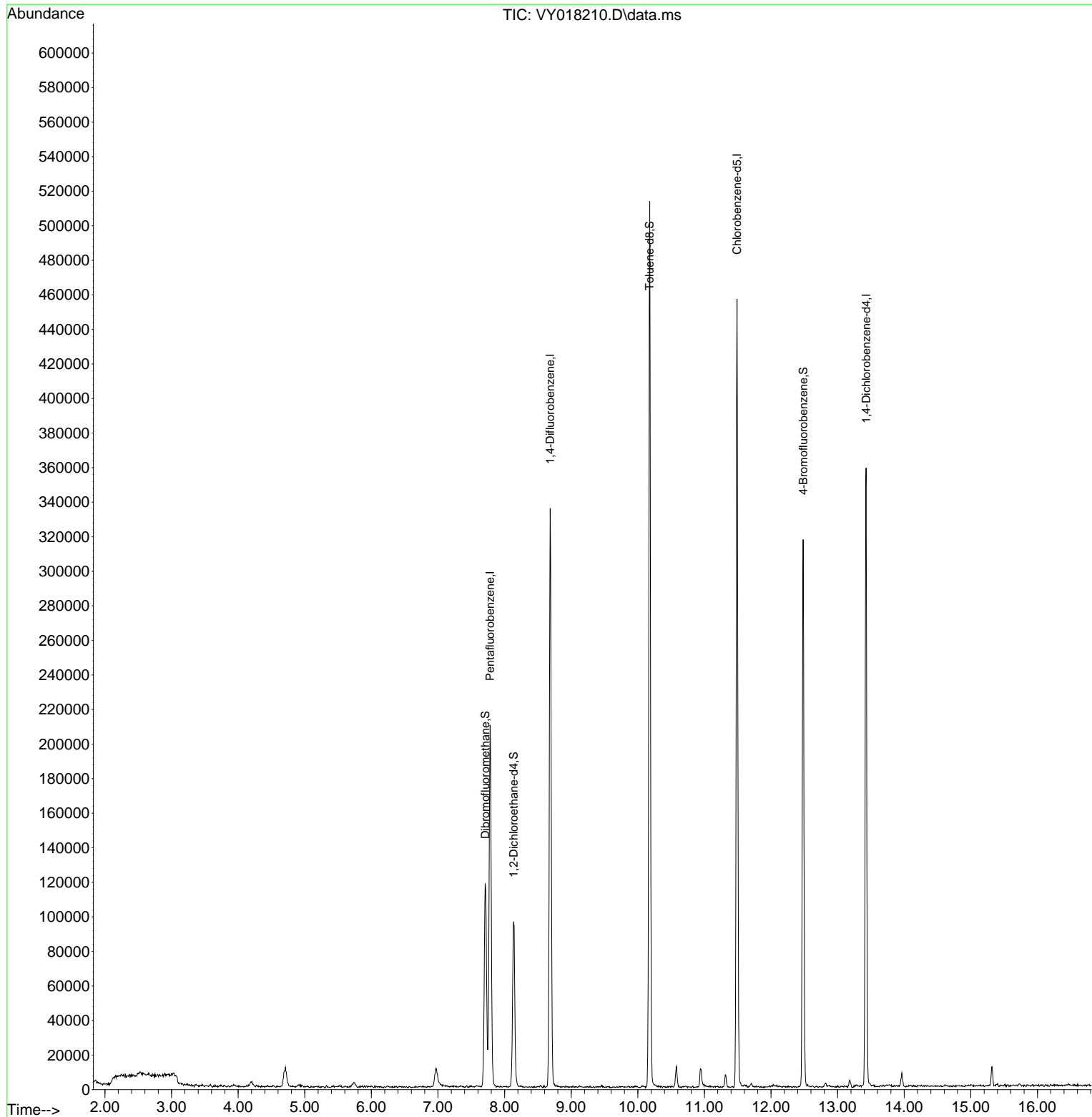
Target Compounds Qvalue

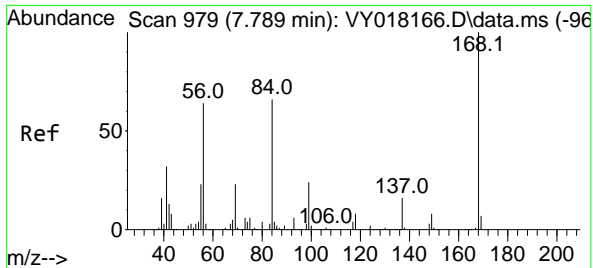
(#) = qualifier out of range (m) = manual integration (+) = signals summed

Data Path : Z:\voasrv\HPCHEM1\MSVOA\_Y\Data\VY050924\  
 Data File : VY018210.D  
 Acq On : 09 May 2024 15:18  
 Operator : SY/MD  
 Sample : P2408-04  
 Misc : 5.02g/5.0mL/MSVOA\_Y/SOIL/B  
 ALS Vial : 13 Sample Multiplier: 1

Instrument :  
 MSVOA\_Y  
 ClientSampleId :  
 ETGI-285

Quant Time: May 10 01:18:14 2024  
 Quant Method : Z:\voasrv\HPCHEM1\MSVOA\_Y\methods\82Y050724S.M  
 Quant Title : SW846 8260  
 QLast Update : Wed May 08 01:40:14 2024  
 Response via : Initial Calibration

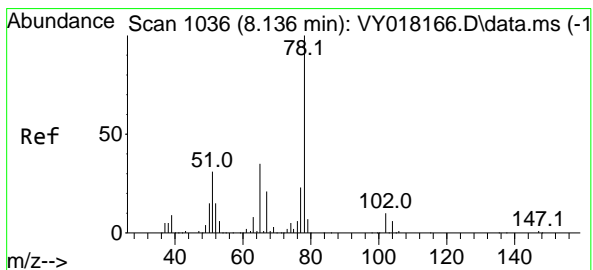
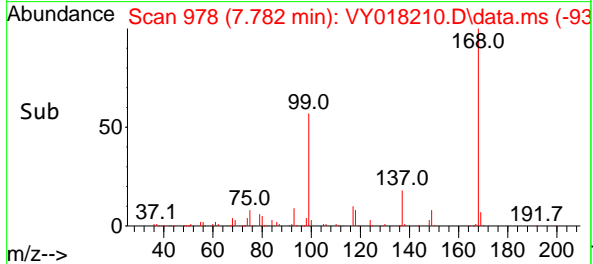
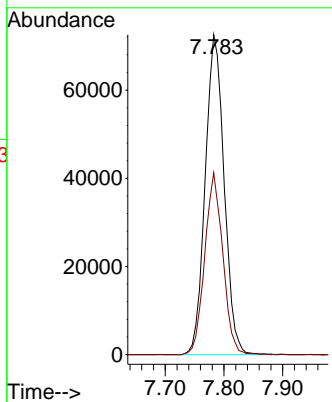
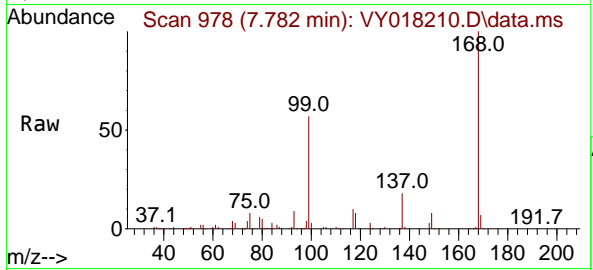




#1  
 Pentafluorobenzene  
 Concen: 50.000 ug/l  
 RT: 7.782 min Scan# 91  
 Delta R.T. -0.006 min  
 Lab File: VY018210.D  
 Acq: 09 May 2024 15:18

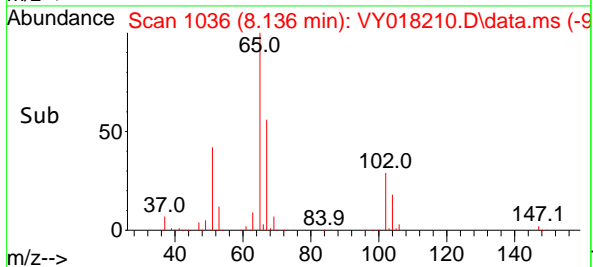
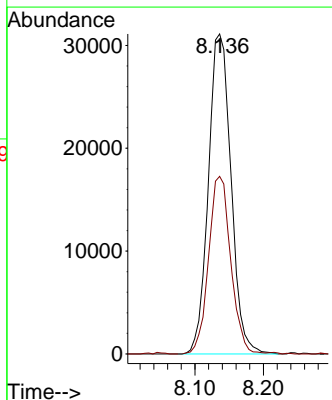
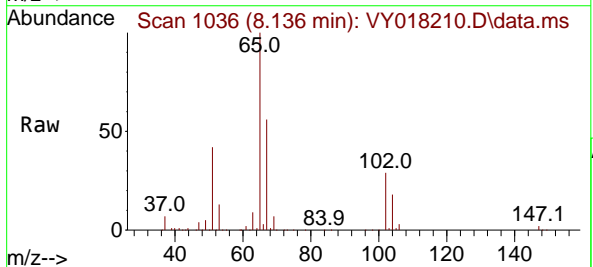
Instrument :  
 MSVOA\_Y  
 ClientSampleId :  
 ETGI-285

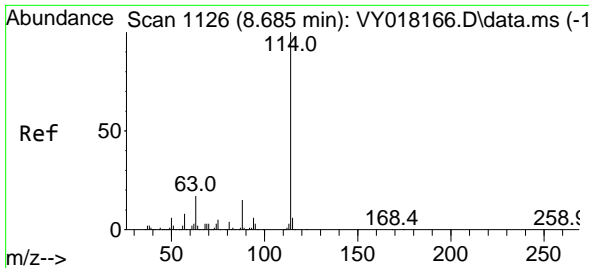
Tgt Ion:168 Resp: 162543  
 Ion Ratio Lower Upper  
 168 100  
 99 56.9 39.1 58.7



#33  
 1,2-Dichloroethane-d4  
 Concen: 59.793 ug/l  
 RT: 8.136 min Scan# 1036  
 Delta R.T. -0.000 min  
 Lab File: VY018210.D  
 Acq: 09 May 2024 15:18

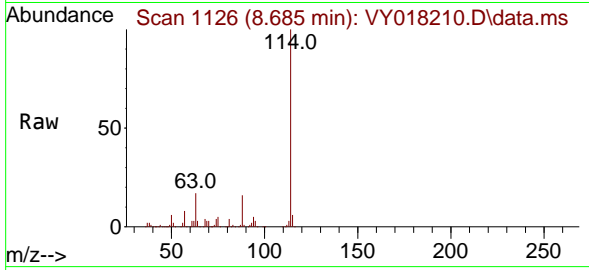
Tgt Ion: 65 Resp: 71499  
 Ion Ratio Lower Upper  
 65 100  
 67 54.3 0.0 109.6





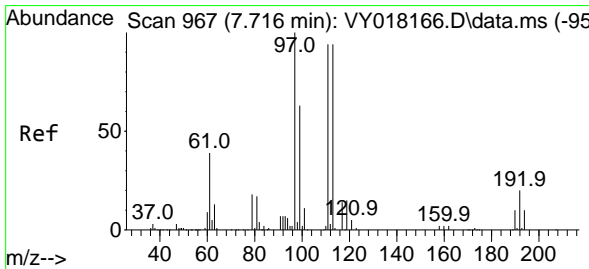
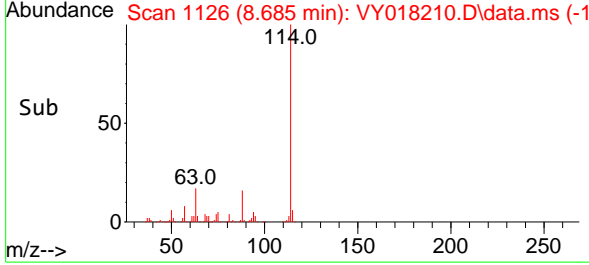
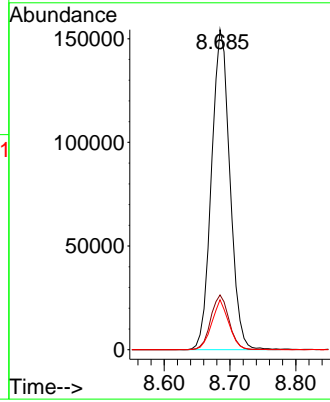
#34  
 1,4-Difluorobenzene  
 Concen: 50.000 ug/l  
 RT: 8.685 min Scan# 1126  
 Delta R.T. -0.000 min  
 Lab File: VY018210.D  
 Acq: 09 May 2024 15:18

Instrument : MSVOA\_Y  
 ClientSampleId : ETGI-285



Tgt Ion:114 Resp: 300730

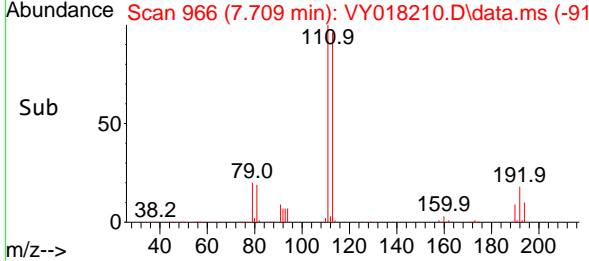
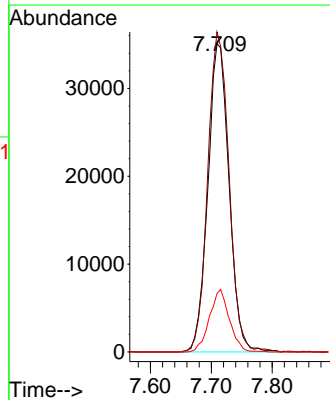
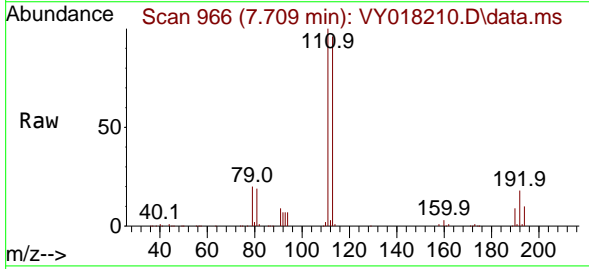
Ion	Ratio	Lower	Upper
114	100		
63	17.1	0.0	35.0
88	15.6	0.0	27.2

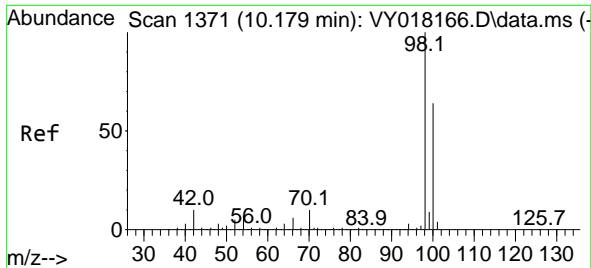


#35  
 Dibromofluoromethane  
 Concen: 53.640 ug/l  
 RT: 7.709 min Scan# 966  
 Delta R.T. -0.006 min  
 Lab File: VY018210.D  
 Acq: 09 May 2024 15:18

Tgt Ion:113 Resp: 84777

Ion	Ratio	Lower	Upper
113	100		
111	104.3	82.2	123.4
192	19.1	15.9	23.9

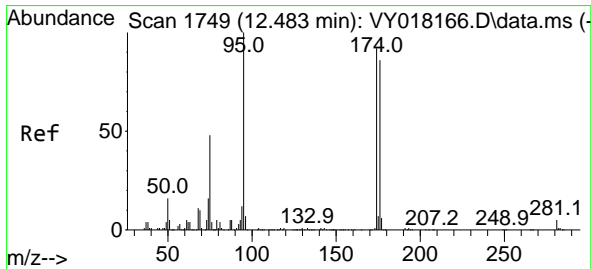
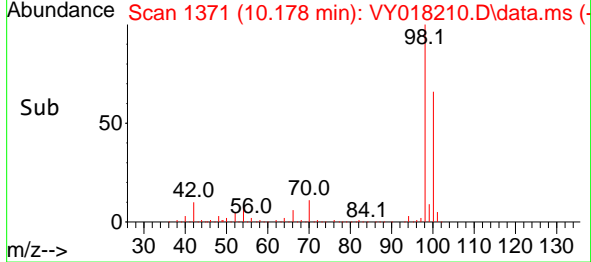
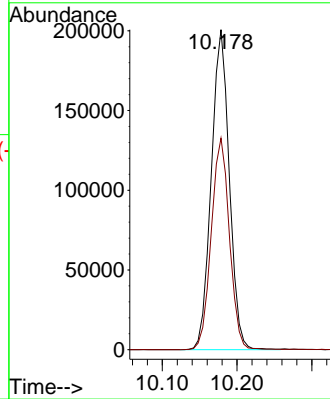
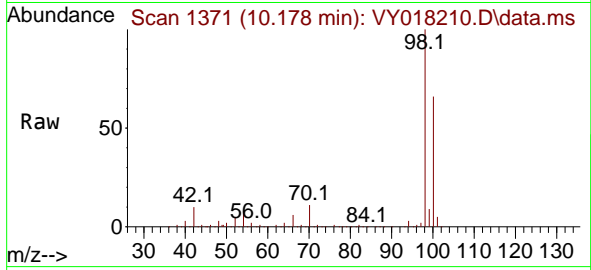




#50  
 Toluene-d8  
 Concen: 53.850 ug/l  
 RT: 10.178 min Scan# 11  
 Delta R.T. -0.000 min  
 Lab File: VY018210.D  
 Acq: 09 May 2024 15:18

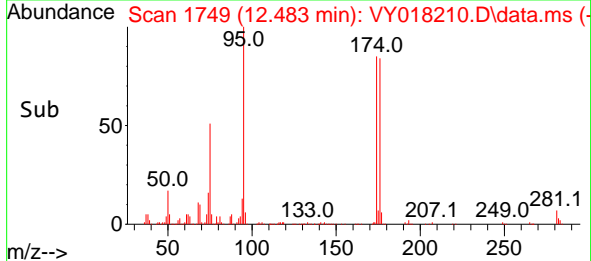
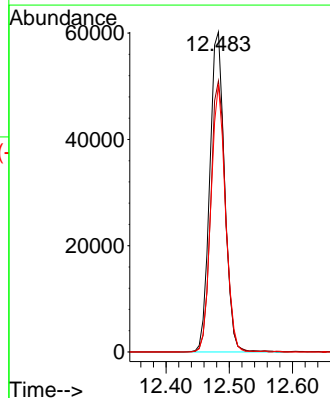
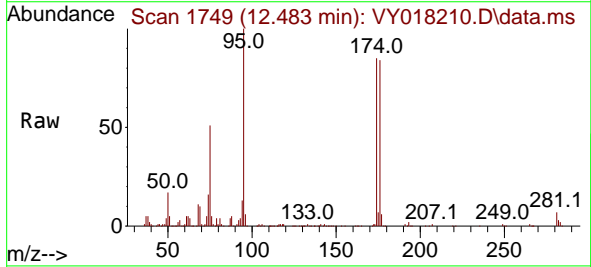
Instrument :  
 MSVOA\_Y  
 ClientSampleId :  
 ETGI-285

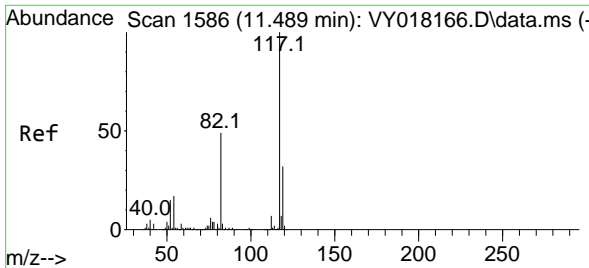
Tgt Ion: 98 Resp: 335379  
 Ion Ratio Lower Upper  
 98 100  
 100 66.8 52.0 78.0



#62  
 4-Bromofluorobenzene  
 Concen: 48.795 ug/l  
 RT: 12.483 min Scan# 1749  
 Delta R.T. -0.000 min  
 Lab File: VY018210.D  
 Acq: 09 May 2024 15:18

Tgt Ion: 95 Resp: 98141  
 Ion Ratio Lower Upper  
 95 100  
 174 84.4 0.0 175.6  
 176 81.5 0.0 171.4



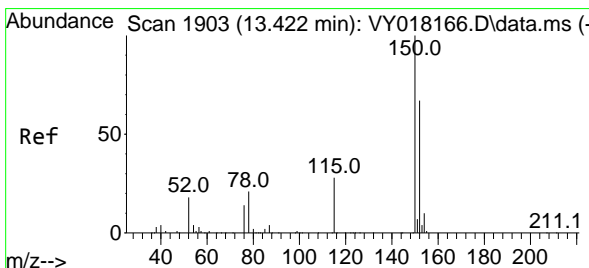
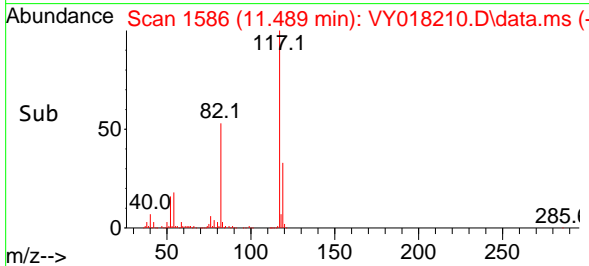
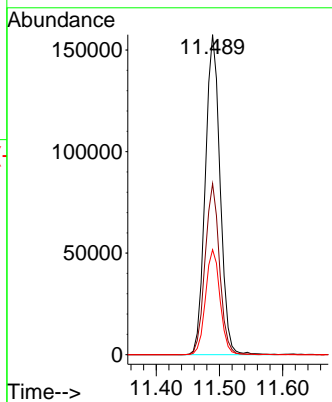
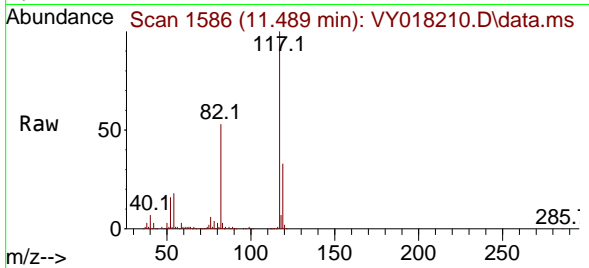


#63  
 Chlorobenzene-d5  
 Concen: 50.000 ug/l  
 RT: 11.489 min Scan# 111  
 Delta R.T. -0.000 min  
 Lab File: VY018210.D  
 Acq: 09 May 2024 15:18

Instrument : MSVOA\_Y  
 ClientSampleId : ETGI-285

Tgt Ion:117 Resp: 257086

Ion	Ratio	Lower	Upper
117	100		
82	53.4	42.4	63.6
119	32.8	25.9	38.9



#72  
 1,4-Dichlorobenzene-d4  
 Concen: 50.000 ug/l  
 RT: 13.428 min Scan# 1904  
 Delta R.T. 0.006 min  
 Lab File: VY018210.D  
 Acq: 09 May 2024 15:18

Tgt Ion:152 Resp: 95049

Ion	Ratio	Lower	Upper
152	100		
115	57.9	28.2	84.7
150	159.7	0.0	345.6

