

Data Path : Z:\voasrv\HPCHEM1\MSVOA\_Y\Data\VY051721\  
 Data File : VY004814.D  
 Acq On : 17 May 2021 19:35  
 Operator : SY/MD  
 Sample : M2420-01  
 Misc : 5.00G/5ML/MSVOA\_Y/SOIL  
 ALS Vial : 25 Sample Multiplier: 1

Instrument :  
 MSVOA\_Y  
 ClientSampleId :  
 CONCESSION-CP-1

Quant Time: May 18 01:07:55 2021  
 Quant Method : Z:\voasrv\HPCHEM1\MSVOA\_Y\methods\82Y051021S.M  
 Quant Title : SW846 8260  
 QLast Update : Tue May 11 04:13:44 2021  
 Response via : Initial Calibration

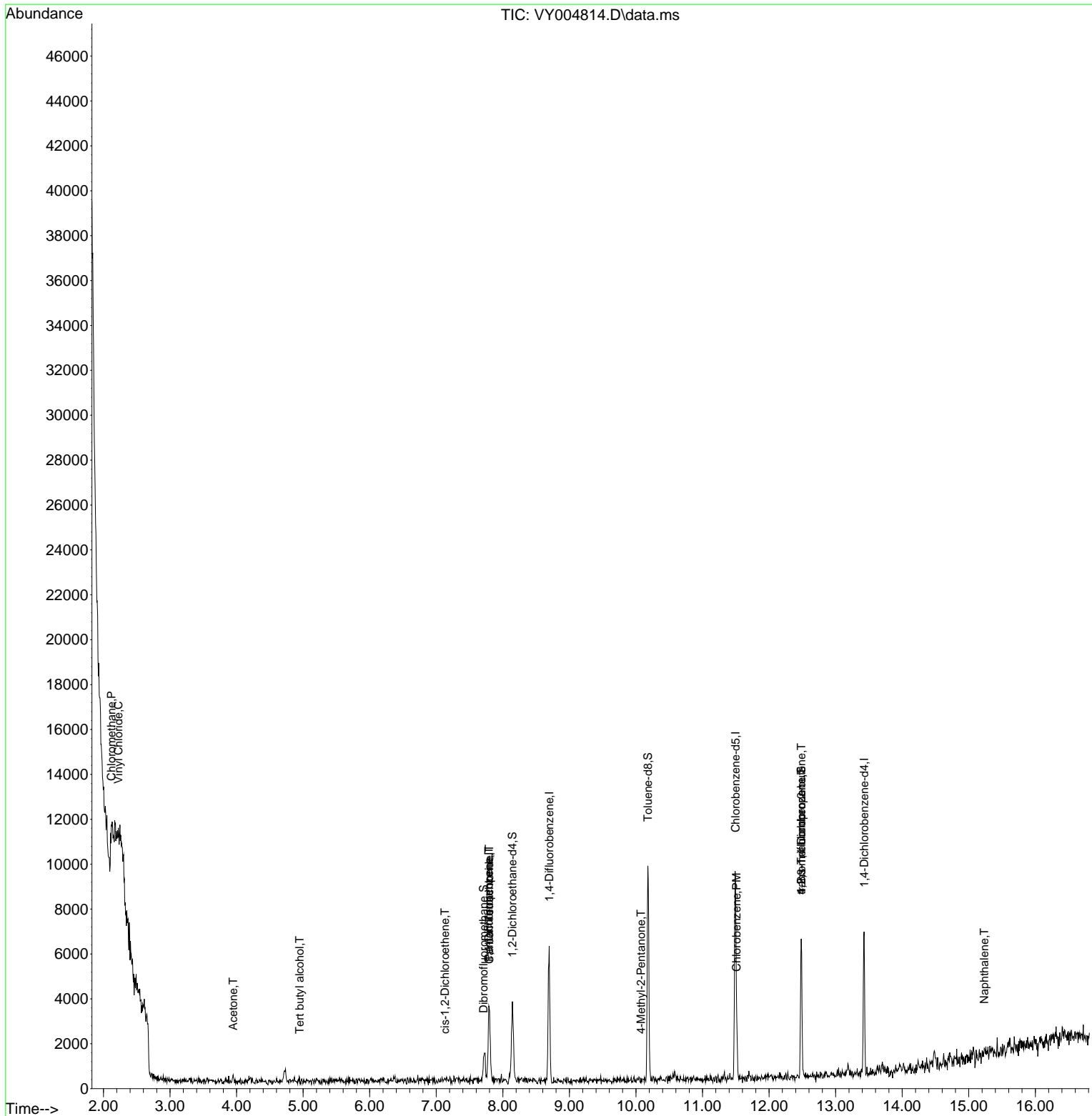
Compound	R.T.	QIon	Response	Conc	Units	Dev(Min)
-----						
Internal Standards						
1) Pentafluorobenzene	7.789	168	3218	50.00	ug/l	# 0.00
34) 1,4-Difluorobenzene	8.697	114	5163	50.00	ug/l	0.00
63) Chlorobenzene-d5	11.496	117	4990	50.00	ug/l	0.00
72) 1,4-Dichlorobenzene-d4	13.428	152	1517	50.00	ug/l	0.00
System Monitoring Compounds						
33) 1,2-Dichloroethane-d4	8.143	65	2674	69.81	ug/l	0.00
Spiked Amount	50.000	Range 50 - 163	Recovery	=	139.62%	
35) Dibromofluoromethane	7.710	113	917	32.44	ug/l	-0.02
Spiked Amount	50.000	Range 54 - 147	Recovery	=	64.88%	
50) Toluene-d8	10.179	98	6426	50.33	ug/l	0.00
Spiked Amount	50.000	Range 49 - 140	Recovery	=	100.66%	
62) 4-Bromofluorobenzene	12.483	95	1908	44.28	ug/l	0.00
Spiked Amount	50.000	Range 25 - 144	Recovery	=	88.56%	
Target Compounds						
						Qvalue
3) Chloromethane	2.119	50	150	3.14	ug/l	# 43
4) Vinyl Chloride	2.223	62	307	6.28	ug/l	# 43
11) Tert butyl alcohol	4.948	59	19	4.94	ug/l	# 71
16) Acetone	3.948	43	238	27.66	ug/l	# 45
20) Methylene Chloride	4.722	84	264	Below Cal		# 85
27) cis-1,2-Dichloroethene	7.131	96	46	1.15	ug/l	# 1
36) 1,1-Dichloropropene	7.789	75	278	5.25	ug/l	# 42
38) Carbon Tetrachloride	7.795	117	220	4.63	ug/l	# 12
51) 4-Methyl-2-Pentanone	10.075	43	67	1.85	ug/l	# 39
65) Chlorobenzene	11.514	112	971	9.46	ug/l	# 83
76) 1,2,3-Trichloropropane	12.483	75	1189	73.79	ug/l	# 100
81) trans-1,4-Dichloro-2-b...	12.483	75	1189	127.95	ug/l	# 13
95) Naphthalene	15.233	128	69	1.11	ug/l	# 69
-----						

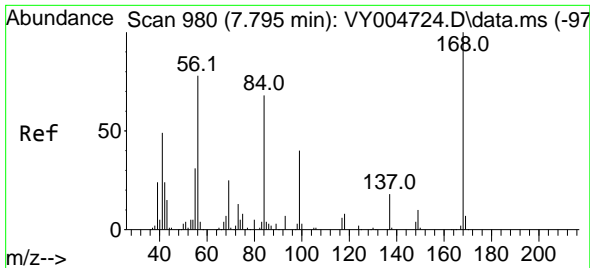
(#) = qualifier out of range (m) = manual integration (+) = signals summed

Data Path : Z:\voasrv\HPCHEM1\MSVOA\_Y\Data\VY051721\  
 Data File : VY004814.D  
 Acq On : 17 May 2021 19:35  
 Operator : SY/MD  
 Sample : M2420-01  
 Misc : 5.00G/5ML/MSVOA\_Y/SOIL  
 ALS Vial : 25 Sample Multiplier: 1

Instrument :  
 MSVOA\_Y  
 ClientSampleId :  
 CONCESSION-CP-1

Quant Time: May 18 01:07:55 2021  
 Quant Method : Z:\voasrv\HPCHEM1\MSVOA\_Y\methods\82Y051021S.M  
 Quant Title : SW846 8260  
 QLast Update : Tue May 11 04:13:44 2021  
 Response via : Initial Calibration

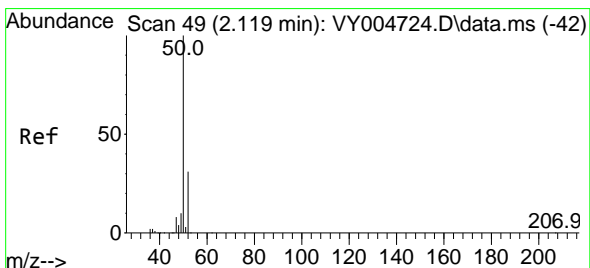
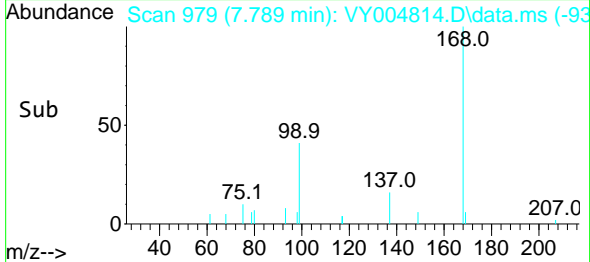
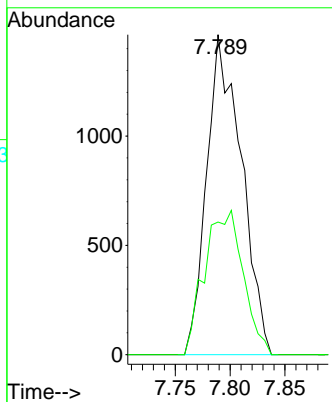
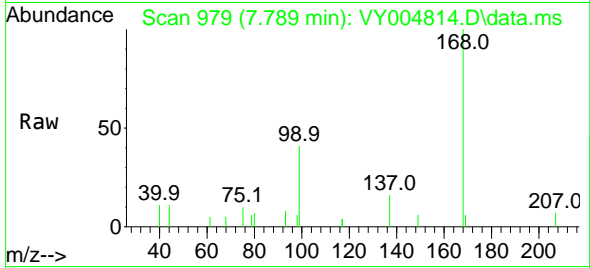




#1  
 Pentafluorobenzene  
 Concen: 50.00 ug/l  
 RT: 7.789 min Scan# 979  
 Delta R.T. -0.006 min  
 Lab File: VY004814.D  
 Acq: 17 May 2021 19:35

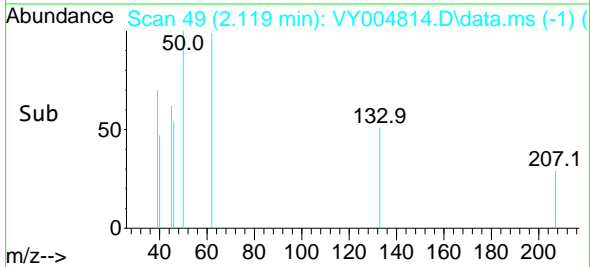
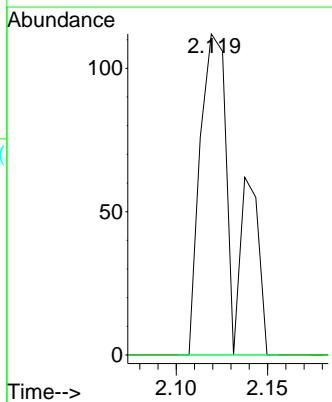
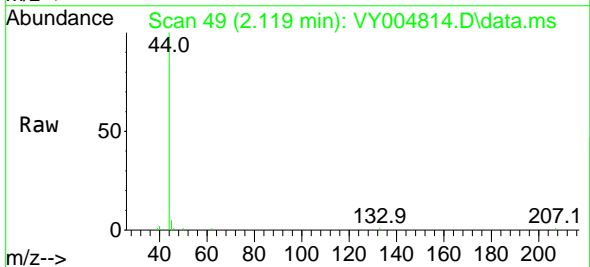
Instrument :  
 MSVOA\_Y  
 ClientSampled :  
 CONCESSION-CP-1

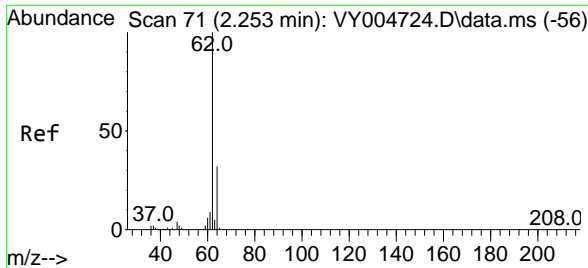
Tgt Ion:168 Resp: 3218  
 Ion Ratio Lower Upper  
 168 100  
 99 41.5 45.6 68.4#



#3  
 Chloromethane  
 Concen: 3.14 ug/l  
 RT: 2.119 min Scan# 49  
 Delta R.T. -0.000 min  
 Lab File: VY004814.D  
 Acq: 17 May 2021 19:35

Tgt Ion: 50 Resp: 150  
 Ion Ratio Lower Upper  
 50 100  
 52 0.0 25.0 37.6#

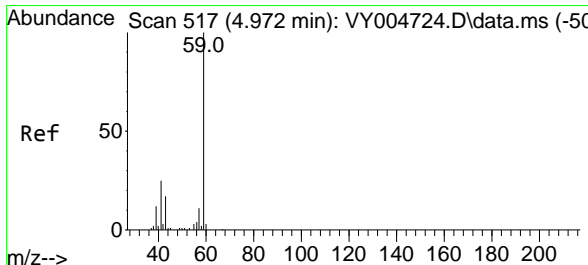
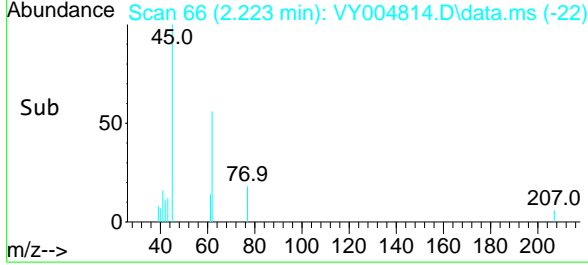
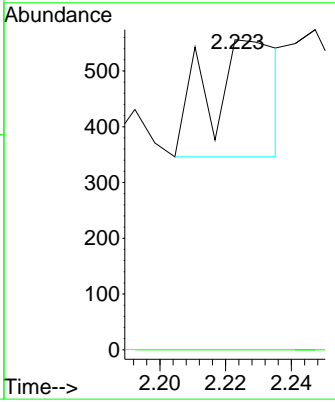
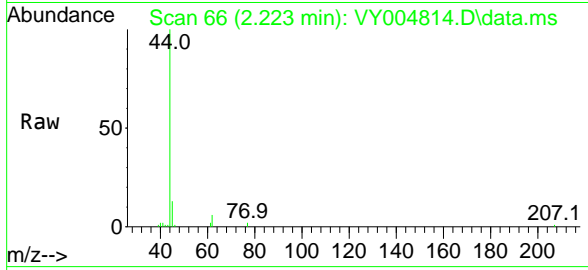




#4  
 Vinyl Chloride  
 Concen: 6.28 ug/l  
 RT: 2.223 min Scan# 66  
 Delta R.T. -0.031 min  
 Lab File: VY004814.D  
 Acq: 17 May 2021 19:35

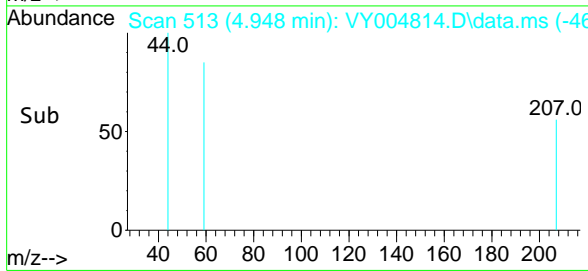
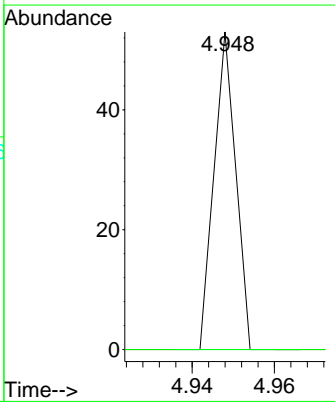
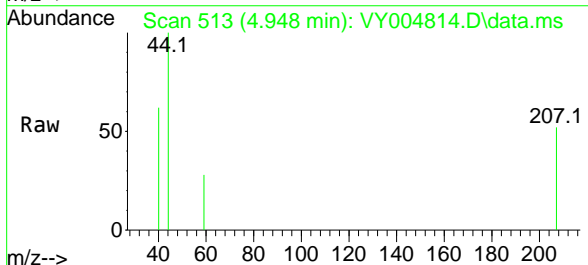
Instrument :  
 MSVOA\_Y  
 ClientSampled :  
 CONCESSION-CP-1

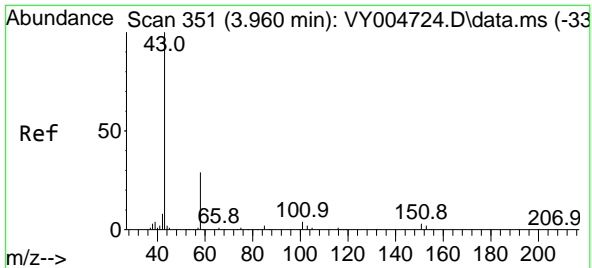
Tgt Ion: 62 Resp: 307  
 Ion Ratio Lower Upper  
 62 100  
 64 0.0 25.4 38.2#



#11  
 Tert butyl alcohol  
 Concen: 4.94 ug/l  
 RT: 4.948 min Scan# 513  
 Delta R.T. -0.024 min  
 Lab File: VY004814.D  
 Acq: 17 May 2021 19:35

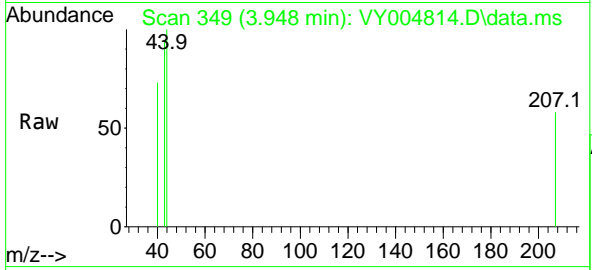
Tgt Ion: 59 Resp: 19  
 Ion Ratio Lower Upper  
 59 100  
 57 0.0 8.7 13.1#



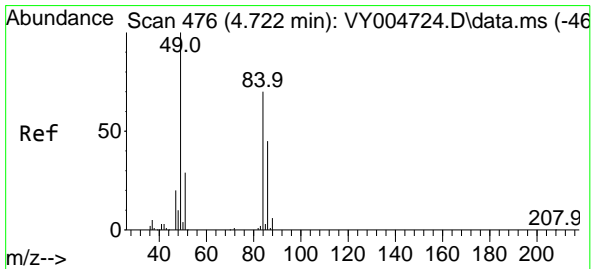
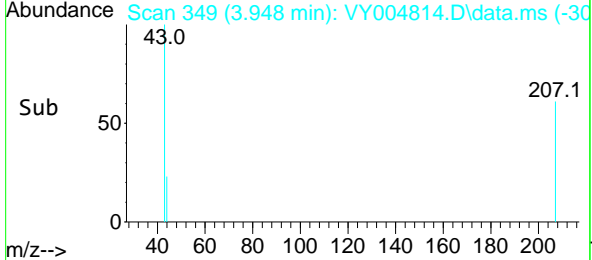
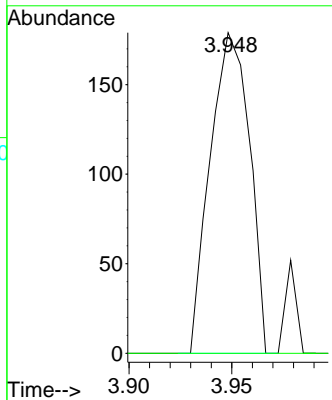


#16  
 Acetone  
 Concen: 27.66 ug/l  
 RT: 3.948 min Scan# 349  
 Delta R.T. -0.012 min  
 Lab File: VY004814.D  
 Acq: 17 May 2021 19:35

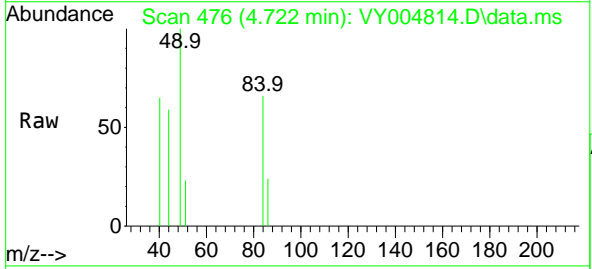
**Instrument :**  
 MSVOA\_Y  
**ClientSampled :**  
 CONCESSION-CP-1



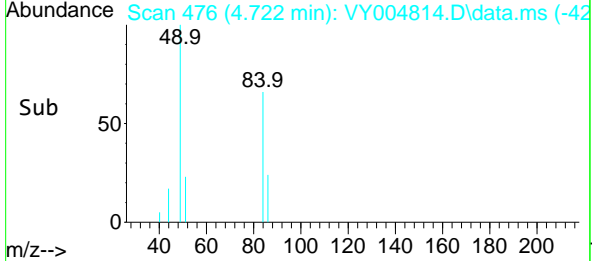
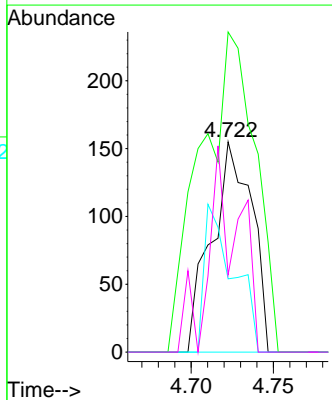
Tgt Ion: 43 Resp: 238  
 Ion Ratio Lower Upper  
 43 100  
 58 0.0 23.6 35.4#

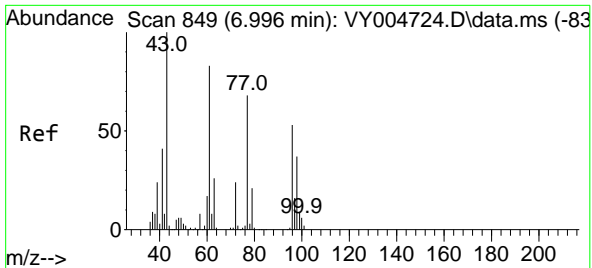


#20  
 Methylene Chloride  
 Concen: Below Cal  
 RT: 4.722 min Scan# 476  
 Delta R.T. 0.000 min  
 Lab File: VY004814.D  
 Acq: 17 May 2021 19:35



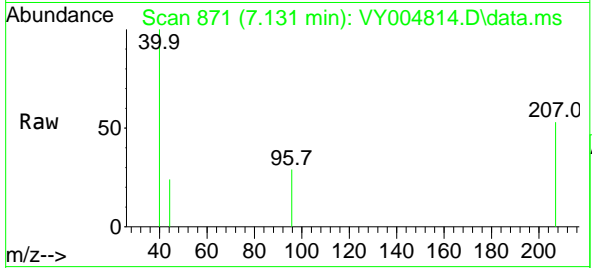
Tgt Ion: 84 Resp: 264  
 Ion Ratio Lower Upper  
 84 100  
 49 152.3 113.8 170.8  
 51 34.8 33.5 50.3  
 86 36.8 51.1 76.7#



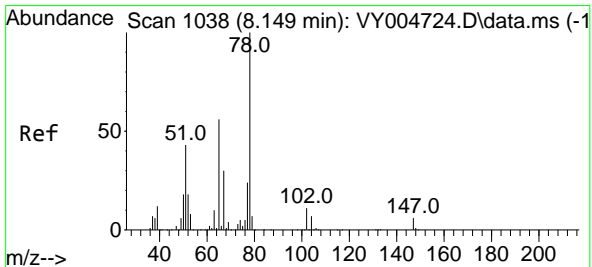
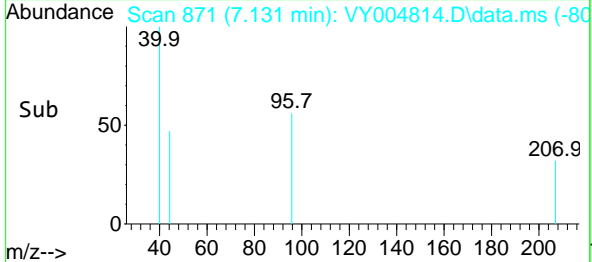
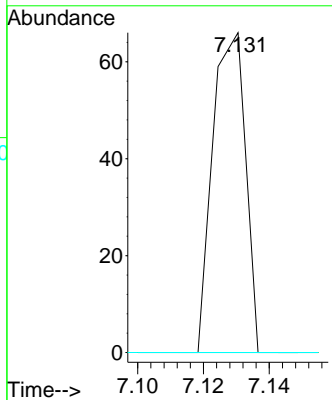


#27  
 cis-1,2-Dichloroethene  
 Concen: 1.15 ug/l  
 RT: 7.131 min Scan# 871  
 Delta R.T. 0.134 min  
 Lab File: VY004814.D  
 Acq: 17 May 2021 19:35

**Instrument :**  
 MSVOA\_Y  
**ClientSampled :**  
 CONCESSION-CP-1

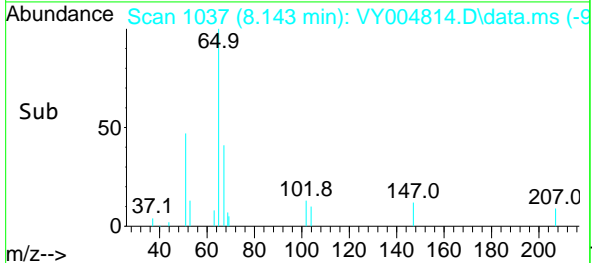
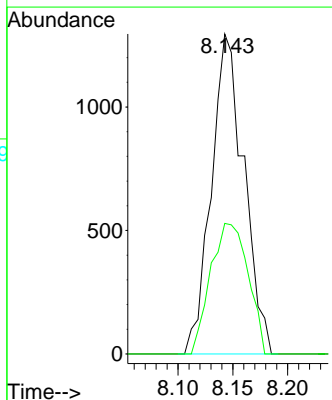
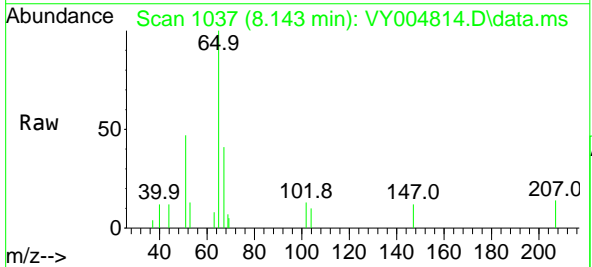


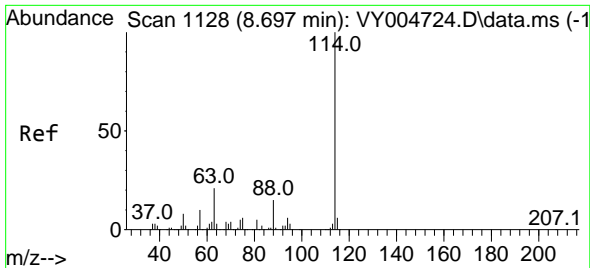
Tgt Ion	Resp	Lower	Upper
96	46		
96	100		
61	0.0	0.0	308.4
98	0.0	0.0	132.0



#33  
 1,2-Dichloroethane-d4  
 Concen: 69.81 ug/l  
 RT: 8.143 min Scan# 1037  
 Delta R.T. -0.006 min  
 Lab File: VY004814.D  
 Acq: 17 May 2021 19:35

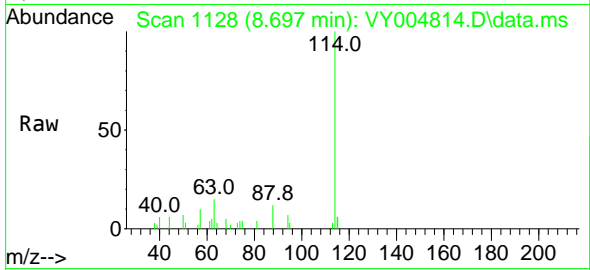
Tgt Ion	Resp	Lower	Upper
65	2674		
65	100		
67	47.1	0.0	108.0



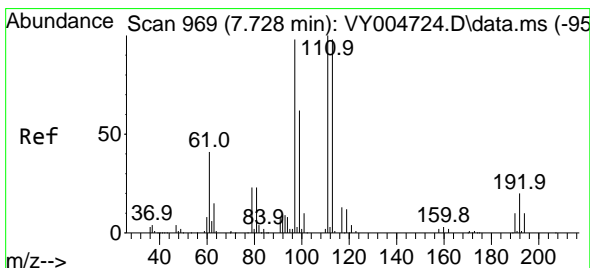
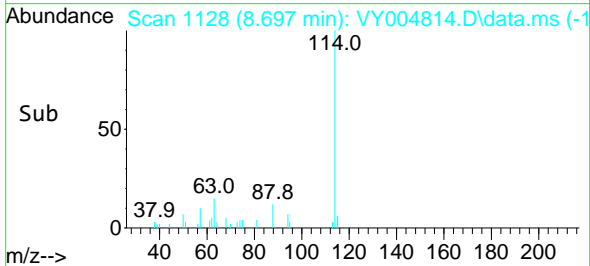
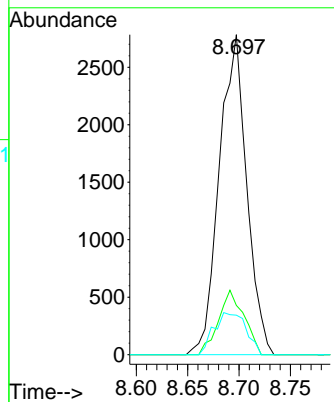


#34  
 1,4-Difluorobenzene  
 Concen: 50.00 ug/l  
 RT: 8.697 min Scan# 1128  
 Delta R.T. -0.000 min  
 Lab File: VY004814.D  
 Acq: 17 May 2021 19:35

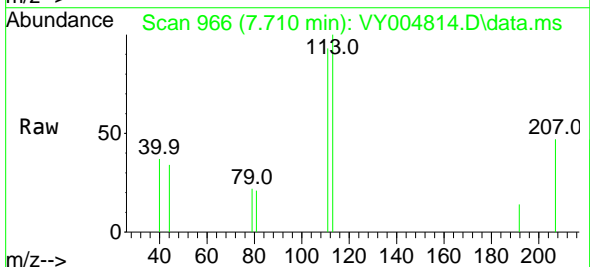
Instrument : MSVOA\_Y  
 ClientSampled : CONCESSION-CP-1



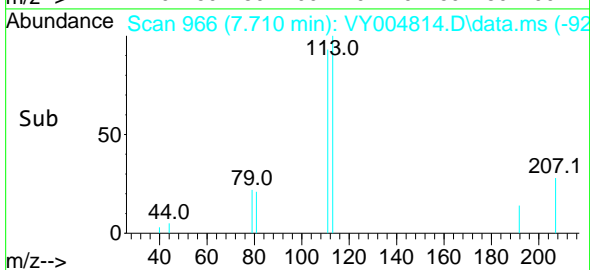
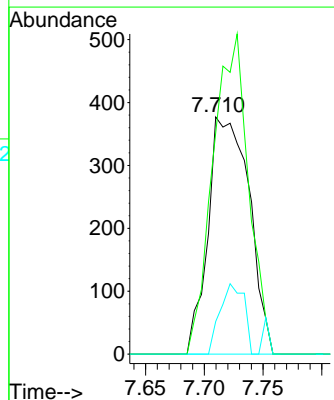
Tgt Ion	Resp	Lower	Upper
114	100		
63	15.4	0.0	42.8
88	12.3	0.0	31.0

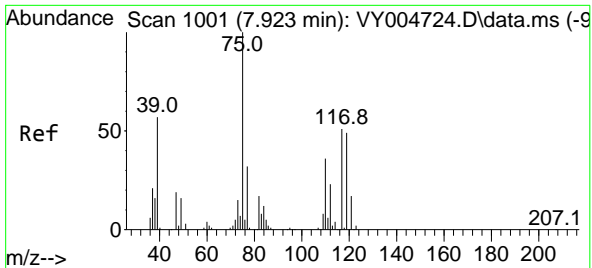


#35  
 Dibromofluoromethane  
 Concen: 32.44 ug/l  
 RT: 7.710 min Scan# 966  
 Delta R.T. -0.018 min  
 Lab File: VY004814.D  
 Acq: 17 May 2021 19:35



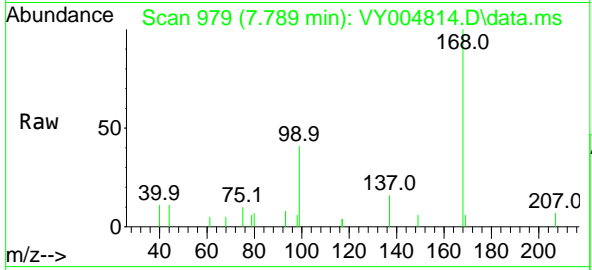
Tgt Ion	Resp	Lower	Upper
113	100		
111	116.9	80.5	120.7
192	17.4	15.0	22.6





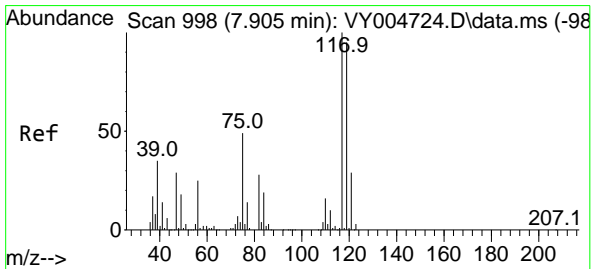
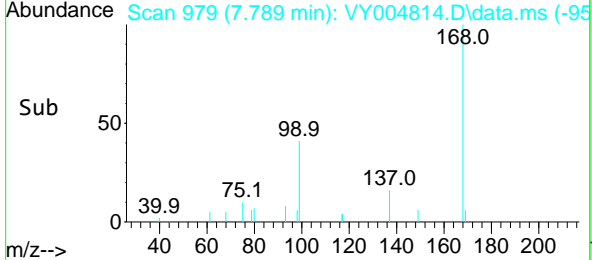
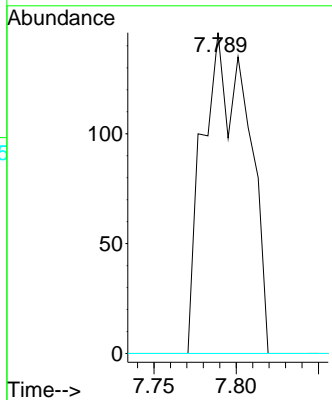
#36  
 1,1-Dichloropropene  
 Concen: 5.25 ug/l  
 RT: 7.789 min Scan# 979  
 Delta R.T. -0.134 min  
 Lab File: VY004814.D  
 Acq: 17 May 2021 19:35

**Instrument :**  
 MSVOA\_Y  
**ClientSampled :**  
 CONCESSION-CP-1

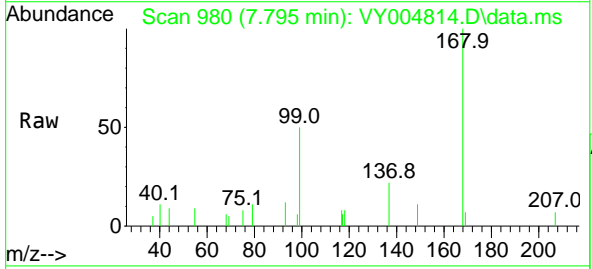


Tgt Ion: 75 Resp: 278

Ion	Ratio	Lower	Upper
75	100		
110	0.0	17.0	50.9#
77	0.0	25.0	37.4#

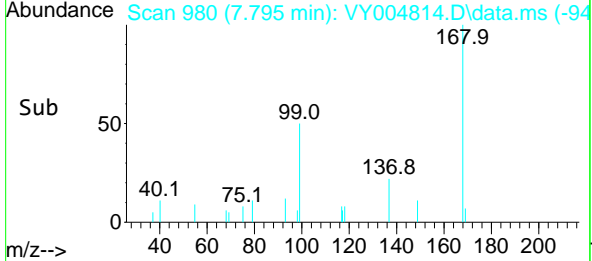
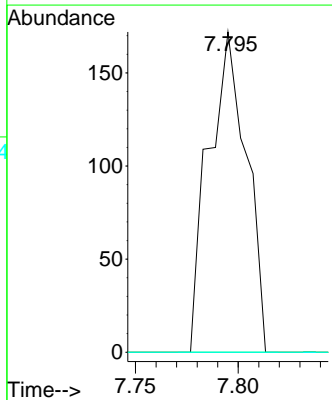


#38  
 Carbon Tetrachloride  
 Concen: 4.63 ug/l  
 RT: 7.795 min Scan# 980  
 Delta R.T. -0.110 min  
 Lab File: VY004814.D  
 Acq: 17 May 2021 19:35

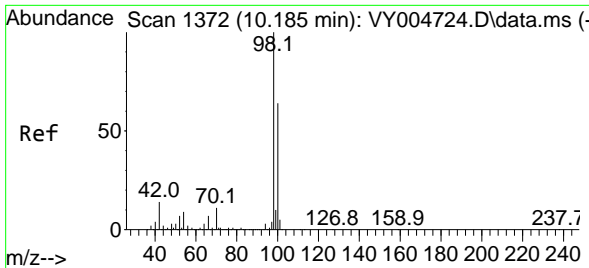


Tgt Ion: 117 Resp: 220

Ion	Ratio	Lower	Upper
117	100		
119	0.0	76.3	114.5#
121	0.0	23.0	34.6#



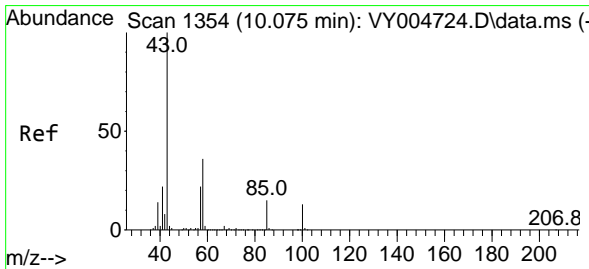
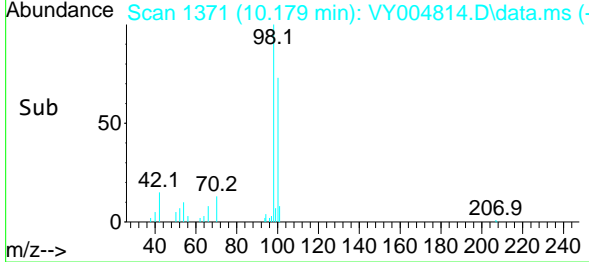
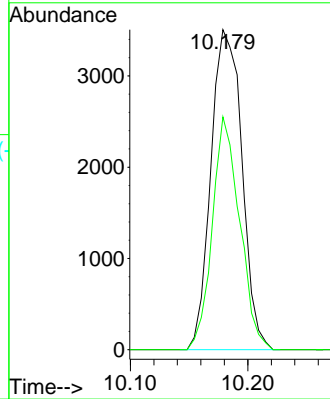
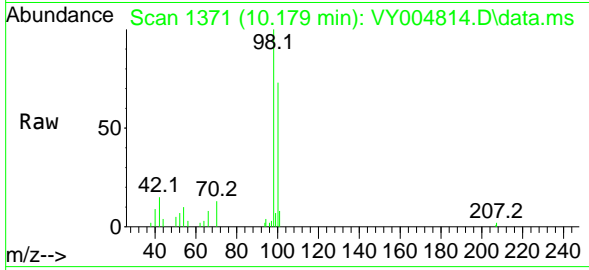




#50  
 Toluene-d8  
 Concen: 50.33 ug/l  
 RT: 10.179 min Scan# 1371  
 Delta R.T. -0.006 min  
 Lab File: VY004814.D  
 Acq: 17 May 2021 19:35

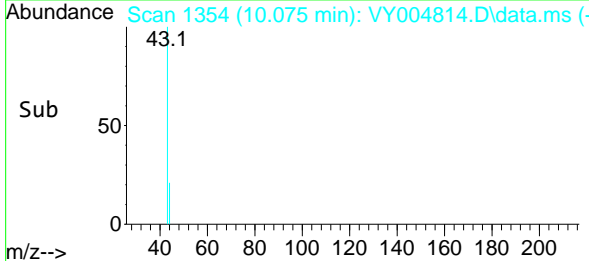
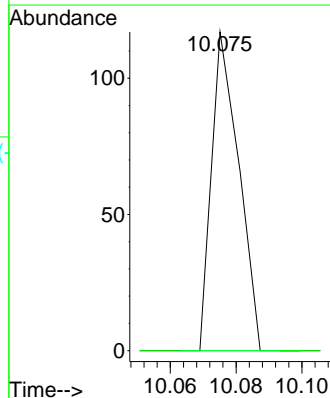
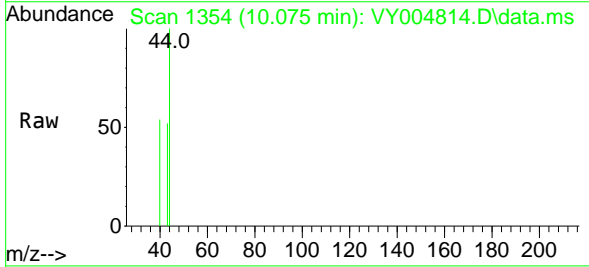
**Instrument :**  
 MSVOA\_Y  
**ClientSampled :**  
 CONCESSION-CP-1

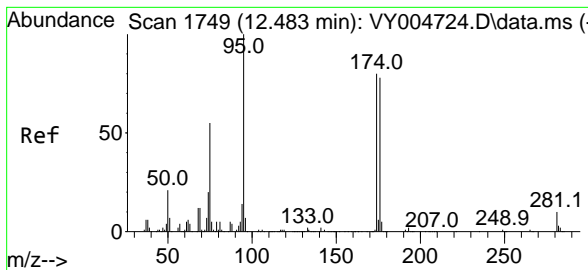
Tgt Ion: 98 Resp: 6426  
 Ion Ratio Lower Upper  
 98 100  
 100 64.3 51.5 77.3



#51  
 4-Methyl-2-Pentanone  
 Concen: 1.85 ug/l  
 RT: 10.075 min Scan# 1354  
 Delta R.T. -0.000 min  
 Lab File: VY004814.D  
 Acq: 17 May 2021 19:35

Tgt Ion: 43 Resp: 67  
 Ion Ratio Lower Upper  
 43 100  
 58 0.0 28.7 43.1#

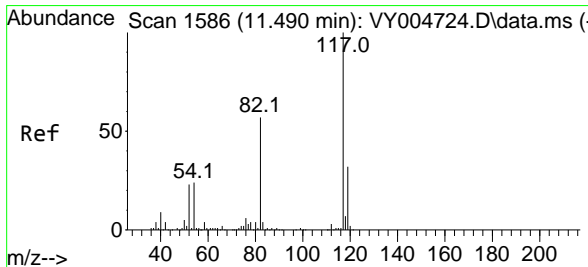
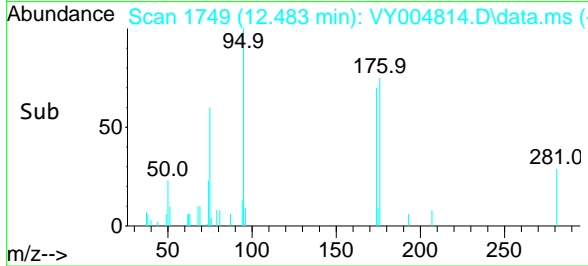
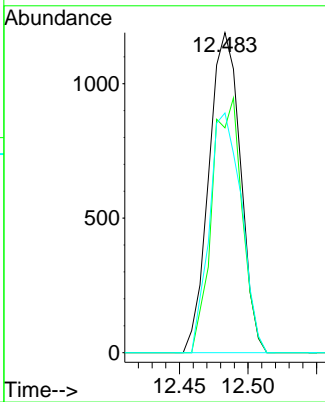
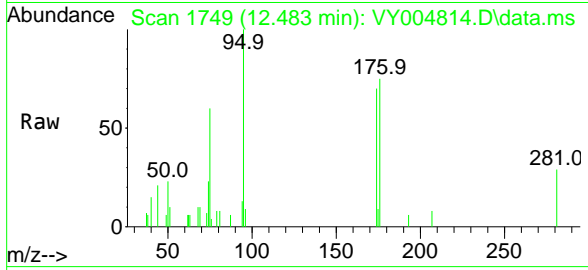




#62  
 4-Bromofluorobenzene  
 Concen: 44.28 ug/l  
 RT: 12.483 min Scan# 1749  
 Delta R.T. -0.000 min  
 Lab File: VY004814.D  
 Acq: 17 May 2021 19:35

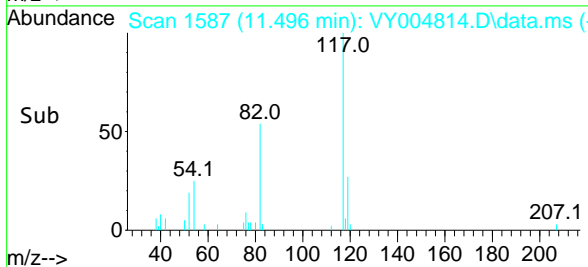
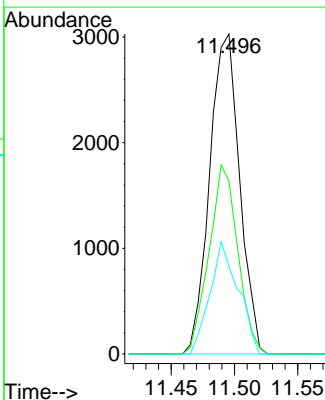
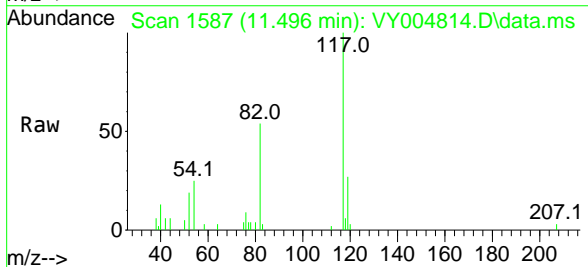
**Instrument :**  
 MSVOA\_Y  
**ClientSampled :**  
 CONCESSION-CP-1

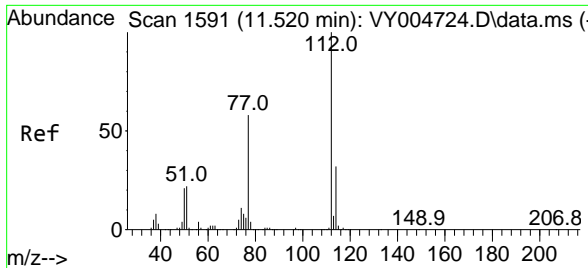
Tgt Ion	Resp	Lower	Upper
95	1908		
174	75.7	0.0	164.2
176	76.0	0.0	159.0



#63  
 Chlorobenzene-d5  
 Concen: 50.00 ug/l  
 RT: 11.496 min Scan# 1587  
 Delta R.T. 0.006 min  
 Lab File: VY004814.D  
 Acq: 17 May 2021 19:35

Tgt Ion	Resp	Lower	Upper
117	4990		
82	54.0	45.4	68.2
119	27.3	25.8	38.6

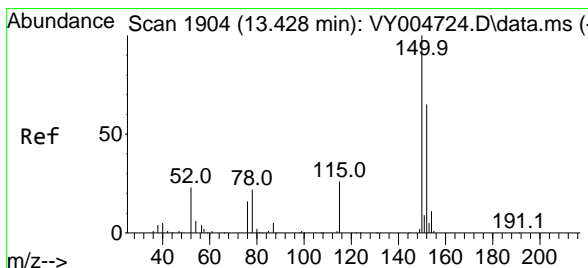
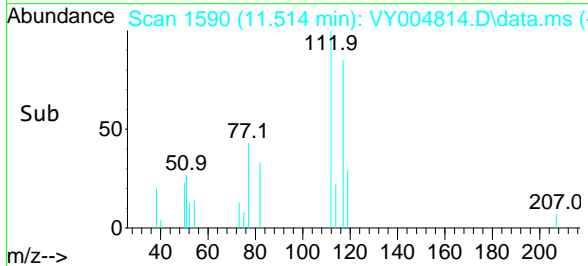
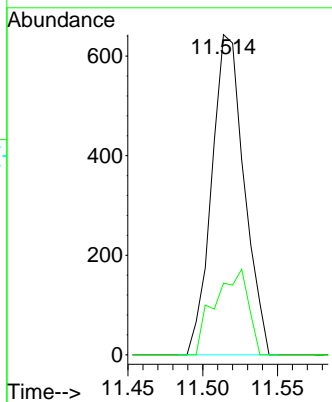
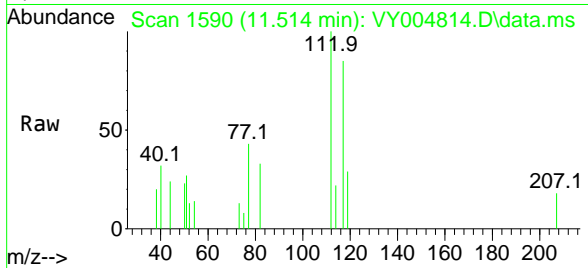




#65  
 Chlorobenzene  
 Concen: 9.46 ug/l  
 RT: 11.514 min Scan# 1590  
 Delta R.T. -0.006 min  
 Lab File: VY004814.D  
 Acq: 17 May 2021 19:35

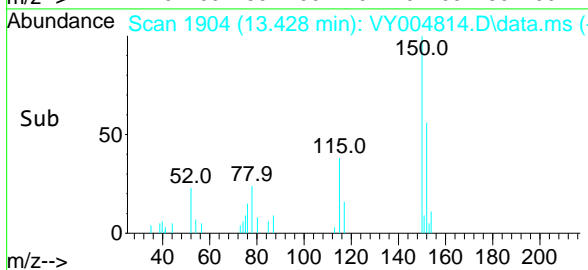
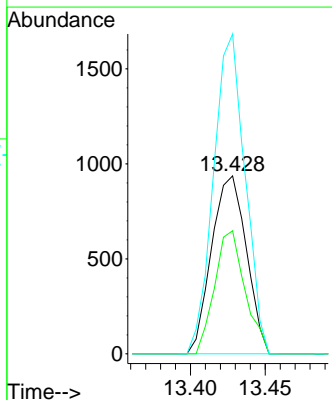
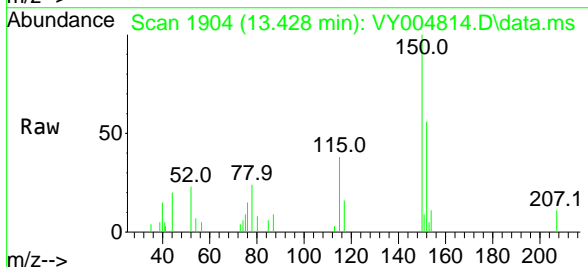
**Instrument :**  
 MSVOA\_Y  
**ClientSampled :**  
 CONCESSION-CP-1

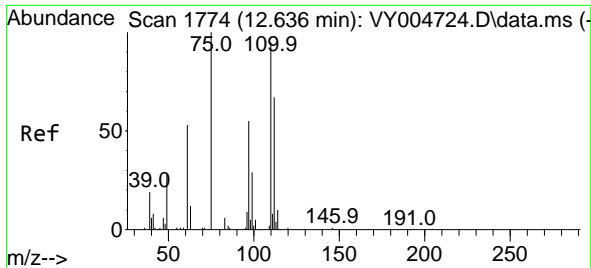
Tgt Ion:112 Resp: 971  
 Ion Ratio Lower Upper  
 112 100  
 114 22.4 25.4 38.2#



#72  
 1,4-Dichlorobenzene-d4  
 Concen: 50.00 ug/l  
 RT: 13.428 min Scan# 1904  
 Delta R.T. -0.000 min  
 Lab File: VY004814.D  
 Acq: 17 May 2021 19:35

Tgt Ion:152 Resp: 1517  
 Ion Ratio Lower Upper  
 152 100  
 115 60.3 29.4 88.3  
 150 163.0 0.0 349.8

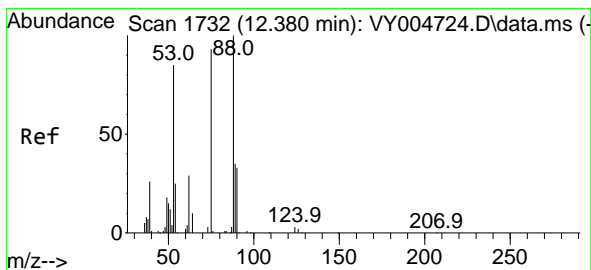
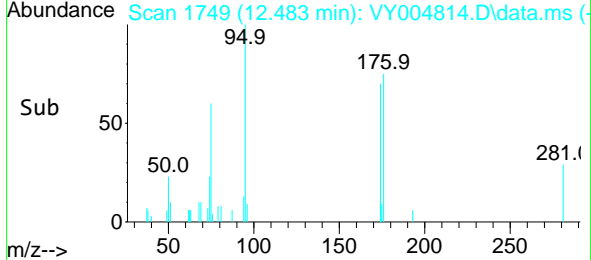
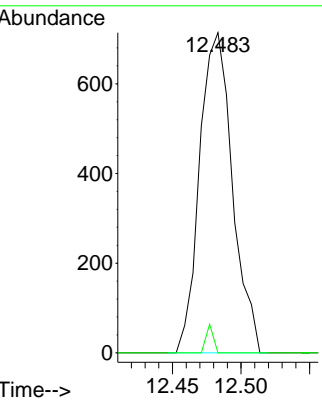
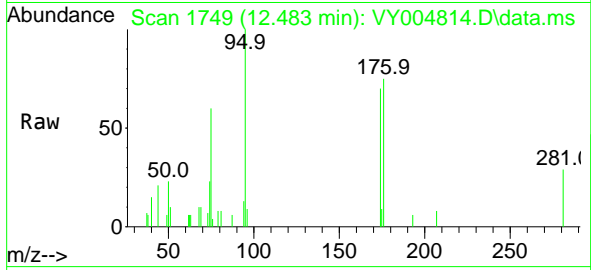




#76  
 1,2,3-Trichloropropane  
 Concen: 73.79 ug/l  
 RT: 12.483 min Scan# 1749  
 Delta R.T. -0.152 min  
 Lab File: VY004814.D  
 Acq: 17 May 2021 19:35

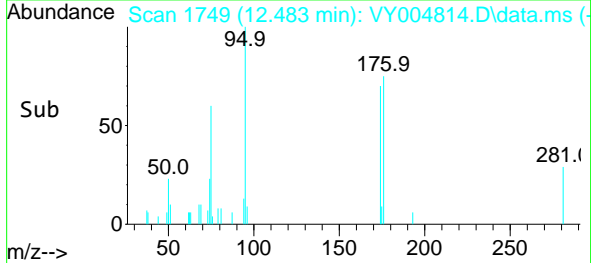
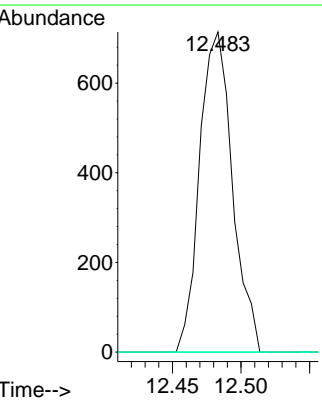
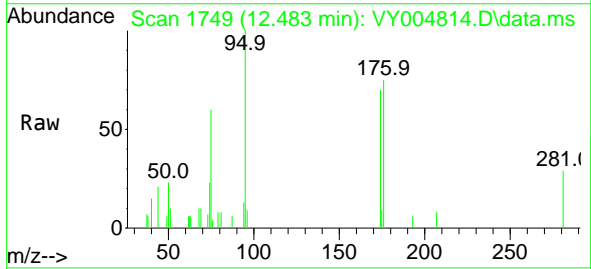
Instrument : MSVOA\_Y  
 Client Sampled : CONCESSION-CP-1

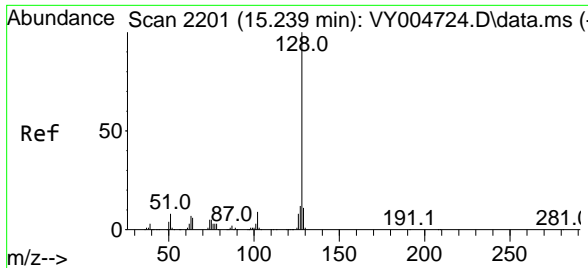
Tgt Ion: 75 Resp: 1189  
 Ion Ratio Lower Upper  
 75 100  
 77 1.9 0.0 0.0#



#81  
 trans-1,4-Dichloro-2-butene  
 Concen: 127.95 ug/l  
 RT: 12.483 min Scan# 1749  
 Delta R.T. 0.104 min  
 Lab File: VY004814.D  
 Acq: 17 May 2021 19:35

Tgt Ion: 75 Resp: 1189  
 Ion Ratio Lower Upper  
 75 100  
 53 0.0 73.9 110.9#  
 89 0.0 35.5 53.3#





#95  
 Naphthalene  
 Concen: 1.11 ug/l  
 RT: 15.233 min Scan# 2200  
 Delta R.T. -0.006 min  
 Lab File: VY004814.D  
 Acq: 17 May 2021 19:35

**Instrument :**  
 MSVOA\_Y  
**ClientSampled :**  
 CONCESSION-CP-1

Tgt Ion	Resp	Lower	Upper
128	100		
127	0.0	10.2	15.2#
129	0.0	8.6	13.0#

