

Data Path : Z:\voasrv\HPCHEM1\MSVOA_Y\Data\VY052024\
 Data File : VY018330.D
 Acq On : 20 May 2024 13:15
 Operator : SY/MD
 Sample : P2518-03
 Misc : 5.07g/5.0mL/MSVOA_Y/SOIL/A
 ALS Vial : 10 Sample Multiplier: 1

Instrument :
 MSVOA_Y
 ClientSampleId :
 VOC-MH-MM

Quant Time: May 21 01:23:55 2024
 Quant Method : Z:\voasrv\HPCHEM1\MSVOA_Y\methods\82Y050724S.M
 Quant Title : SW846 8260
 QLast Update : Wed May 08 01:40:14 2024
 Response via : Initial Calibration

Compound	R.T.	QIon	Response	Conc	Units	Dev(Min)

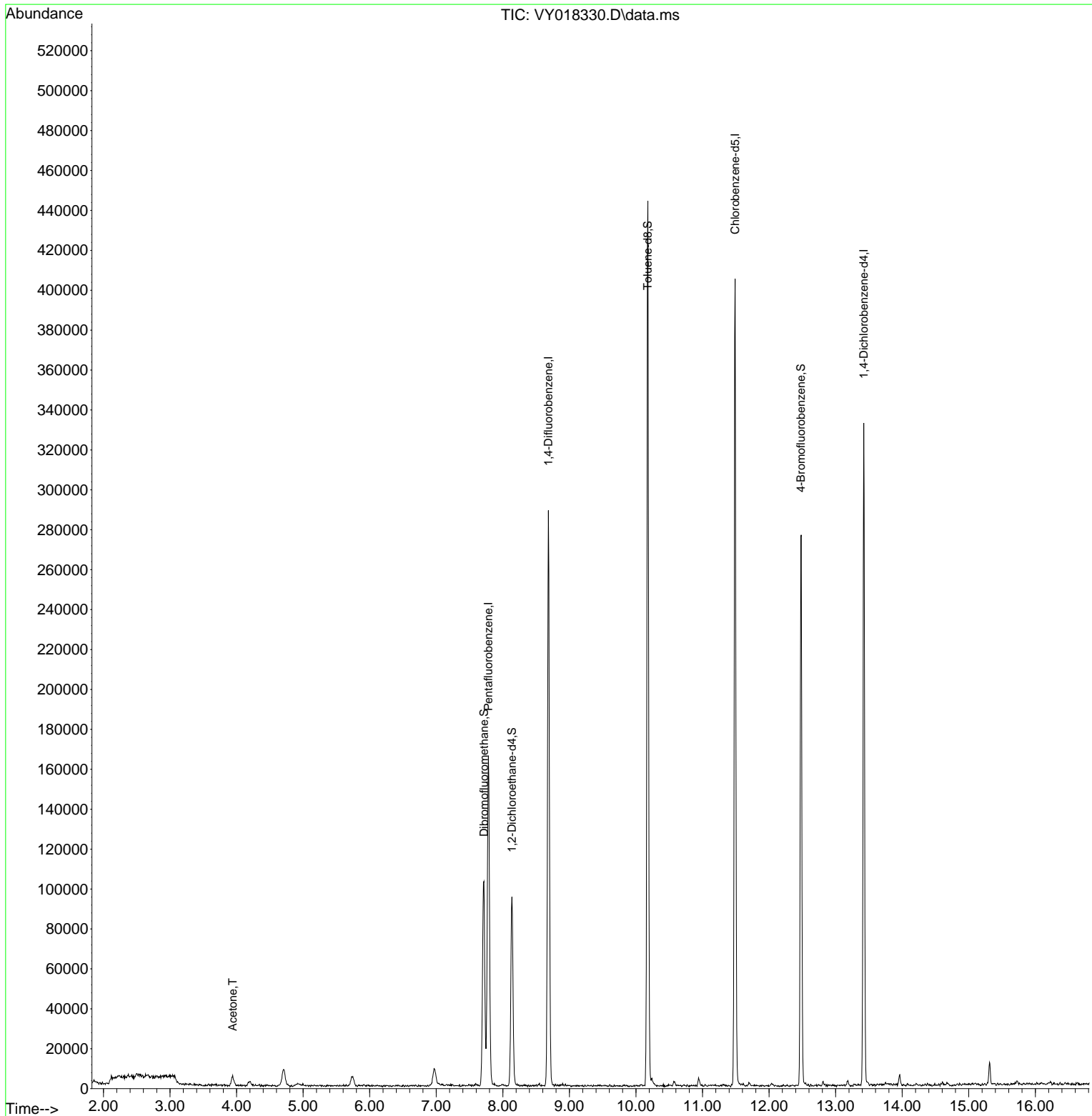
Internal Standards						
1) Pentafluorobenzene	7.783	168	124707	50.000	ug/l	0.00
34) 1,4-Difluorobenzene	8.685	114	248690	50.000	ug/l	0.00
63) Chlorobenzene-d5	11.489	117	223906	50.000	ug/l	0.00
72) 1,4-Dichlorobenzene-d4	13.422	152	81854	50.000	ug/l	0.00
System Monitoring Compounds						
33) 1,2-Dichloroethane-d4	8.136	65	70158	76.472	ug/l	0.00
Spiked Amount	50.000	Range	50 - 163	Recovery	=	152.940%
35) Dibromofluoromethane	7.716	113	74017	56.632	ug/l	0.00
Spiked Amount	50.000	Range	54 - 147	Recovery	=	113.260%
50) Toluene-d8	10.179	98	289798	56.268	ug/l	0.00
Spiked Amount	50.000	Range	58 - 134	Recovery	=	112.540%
62) 4-Bromofluorobenzene	12.477	95	88655	53.302	ug/l	0.00
Spiked Amount	50.000	Range	30 - 143	Recovery	=	106.600%
Target Compounds						
16) Acetone	3.942	43	7634	41.697	ug/l #	84

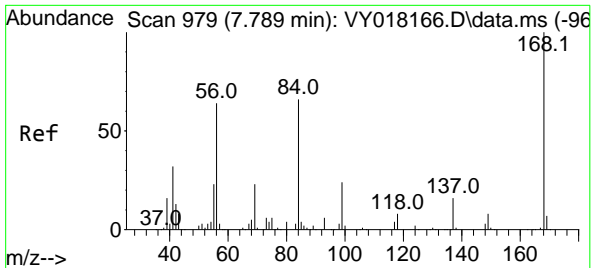
(#) = qualifier out of range (m) = manual integration (+) = signals summed

Data Path : Z:\voasrv\HPCHEM1\MSVOA_Y\Data\VY052024\
 Data File : VY018330.D
 Acq On : 20 May 2024 13:15
 Operator : SY/MD
 Sample : P2518-03
 Misc : 5.07g/5.0mL/MSVOA_Y/SOIL/A
 ALS Vial : 10 Sample Multiplier: 1

Instrument :
 MSVOA_Y
 ClientSampleId :
 VOC-MH-MM

Quant Time: May 21 01:23:55 2024
 Quant Method : Z:\voasrv\HPCHEM1\MSVOA_Y\methods\82Y050724S.M
 Quant Title : SW846 8260
 QLast Update : Wed May 08 01:40:14 2024
 Response via : Initial Calibration

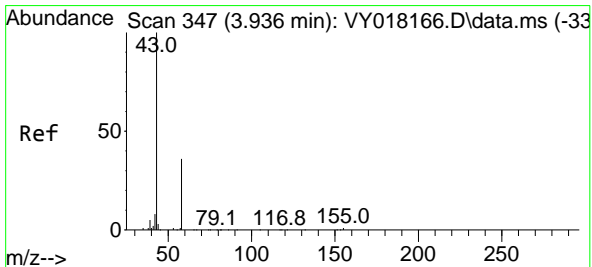
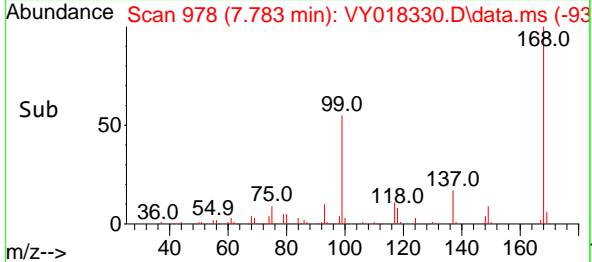
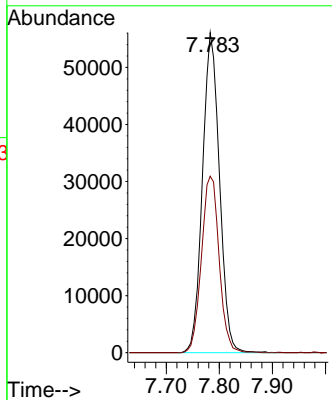
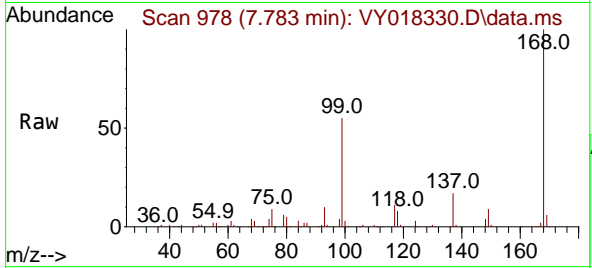




#1
 Pentafluorobenzene
 Concen: 50.000 ug/l
 RT: 7.783 min Scan# 91
 Delta R.T. -0.006 min
 Lab File: VY018330.D
 Acq: 20 May 2024 13:15

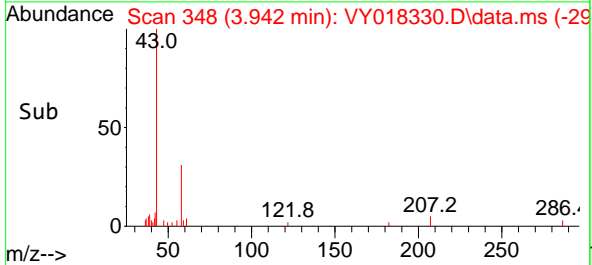
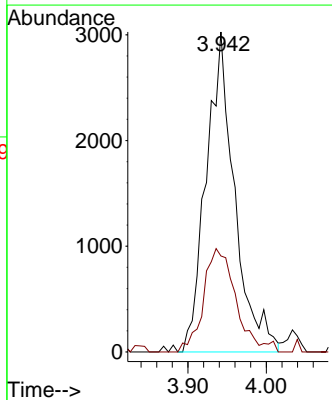
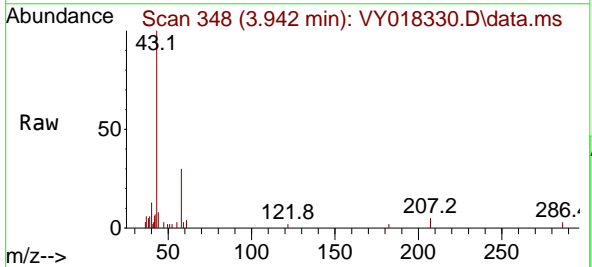
Instrument :
 MSVOA_Y
 ClientSampleId :
 VOC-MH-MM

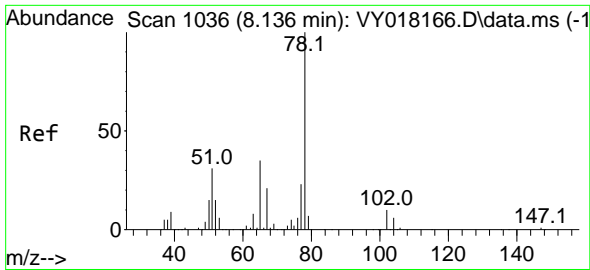
Tgt Ion:168 Resp: 124707
 Ion Ratio Lower Upper
 168 100
 99 55.2 39.1 58.7



#16
 Acetone
 Concen: 41.697 ug/l
 RT: 3.942 min Scan# 348
 Delta R.T. 0.006 min
 Lab File: VY018330.D
 Acq: 20 May 2024 13:15

Tgt Ion: 43 Resp: 7634
 Ion Ratio Lower Upper
 43 100
 58 30.0 31.7 47.5#

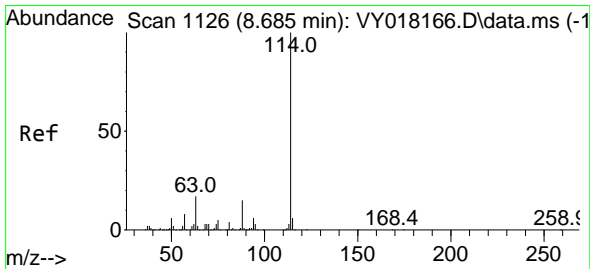
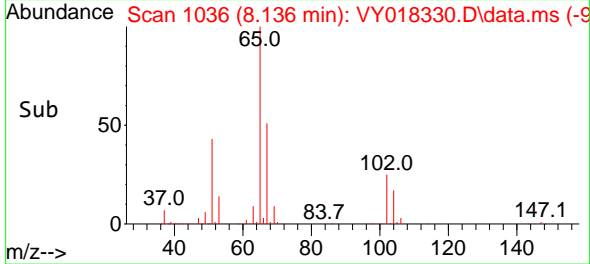
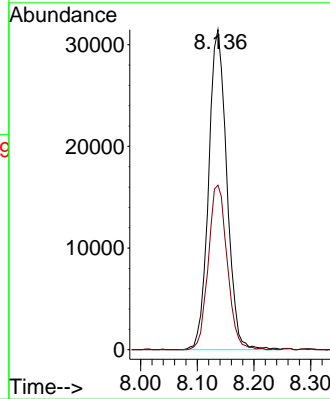
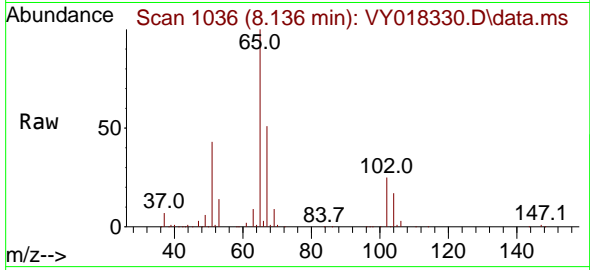




#33
 1,2-Dichloroethane-d4
 Concen: 76.472 ug/l
 RT: 8.136 min Scan# 1036
 Delta R.T. -0.000 min
 Lab File: VY018330.D
 Acq: 20 May 2024 13:15

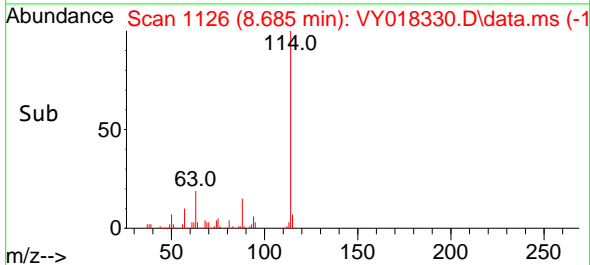
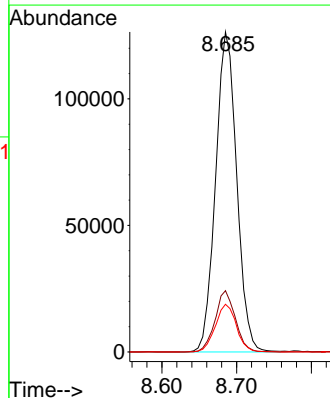
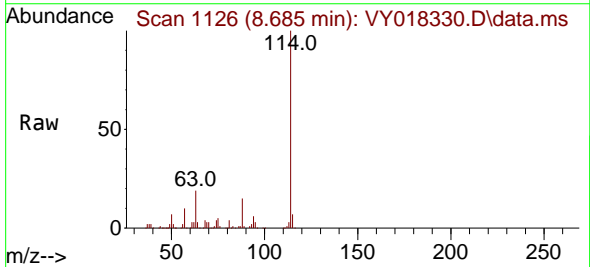
Instrument : MSVOA_Y
 ClientSampleId : VY018330.D
 VOC-MH-MM

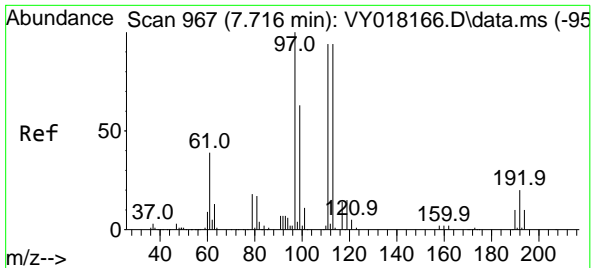
Tgt Ion: 65 Resp: 70158
 Ion Ratio Lower Upper
 65 100
 67 53.4 0.0 109.6



#34
 1,4-Difluorobenzene
 Concen: 50.000 ug/l
 RT: 8.685 min Scan# 1126
 Delta R.T. -0.000 min
 Lab File: VY018330.D
 Acq: 20 May 2024 13:15

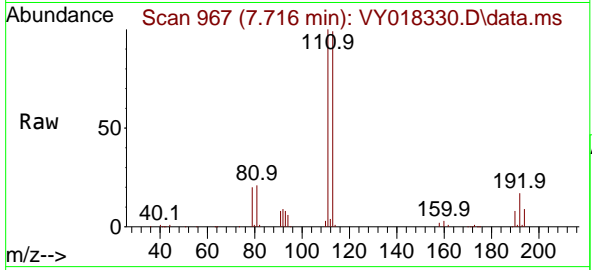
Tgt Ion:114 Resp: 248690
 Ion Ratio Lower Upper
 114 100
 63 19.2 0.0 35.0
 88 14.9 0.0 27.2



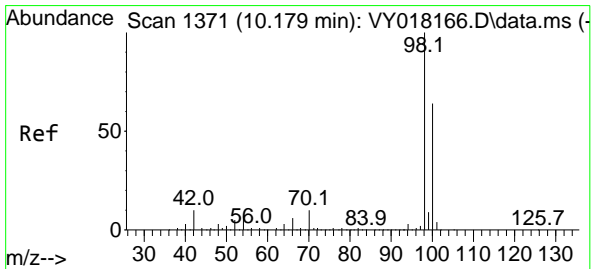
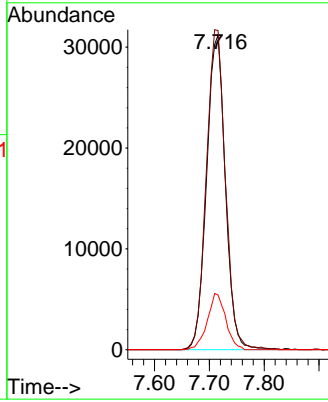
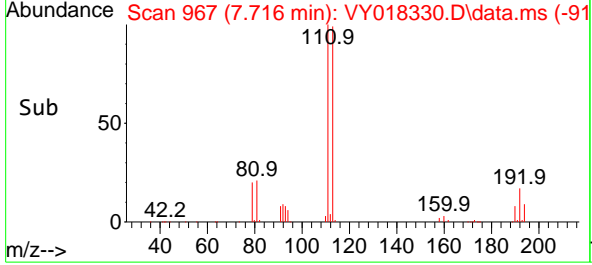


#35
 Dibromofluoromethane
 Concen: 56.632 ug/l
 RT: 7.716 min Scan# 90
 Delta R.T. -0.000 min
 Lab File: VY018330.D
 Acq: 20 May 2024 13:15

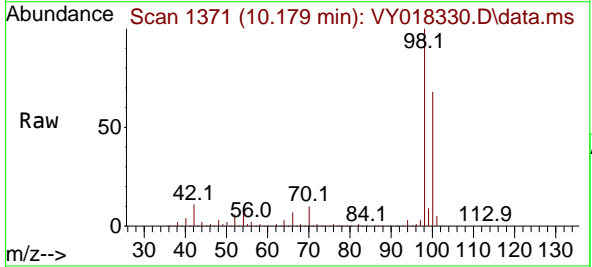
Instrument : MSVOA_Y
 ClientSampleId : VOC-MH-MM



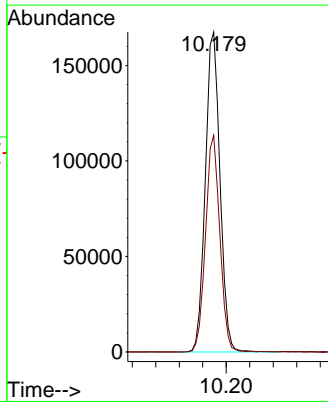
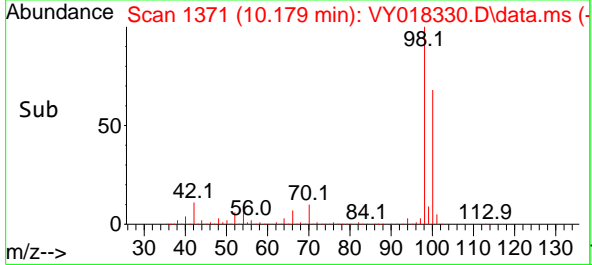
Tgt Ion:113 Resp: 74017
 Ion Ratio Lower Upper
 113 100
 111 103.3 82.2 123.4
 192 17.5 15.9 23.9

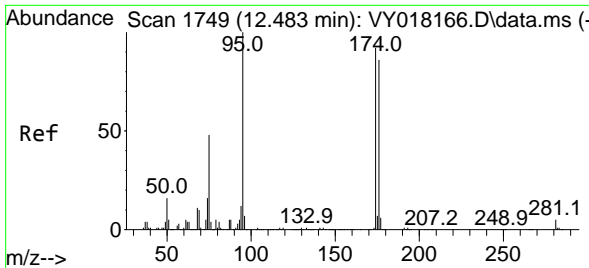


#50
 Toluene-d8
 Concen: 56.268 ug/l
 RT: 10.179 min Scan# 1371
 Delta R.T. -0.000 min
 Lab File: VY018330.D
 Acq: 20 May 2024 13:15



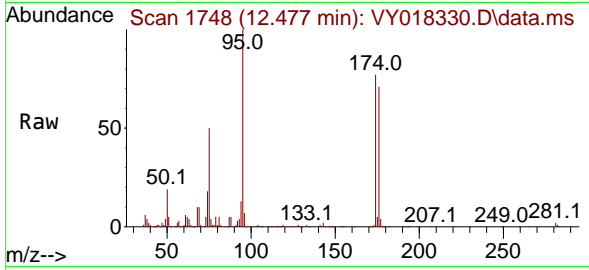
Tgt Ion: 98 Resp: 289798
 Ion Ratio Lower Upper
 98 100
 100 66.1 52.0 78.0





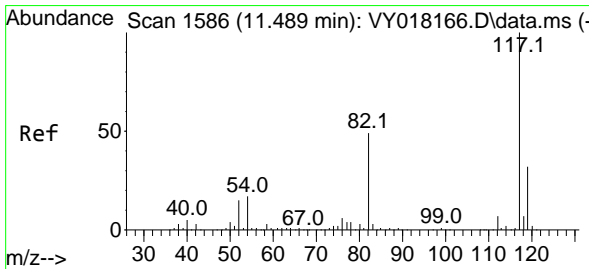
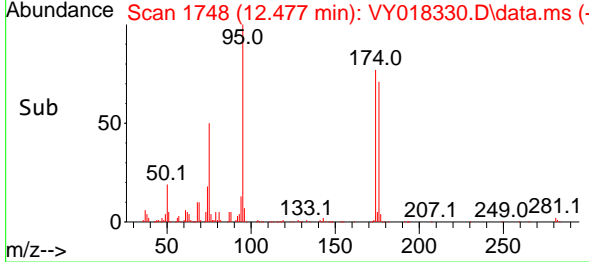
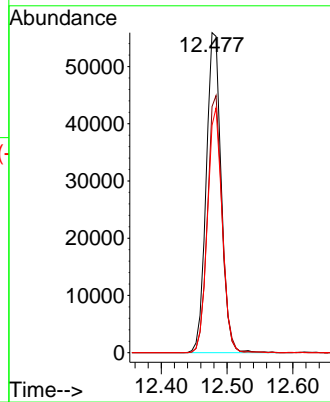
#62
 4-Bromofluorobenzene
 Concen: 53.302 ug/l
 RT: 12.477 min Scan# 1748
 Delta R.T. -0.006 min
 Lab File: VY018330.D
 Acq: 20 May 2024 13:15

Instrument : MSVOA_Y
 ClientSampleId : VOC-MH-MM



Tgt Ion: 95 Resp: 88655

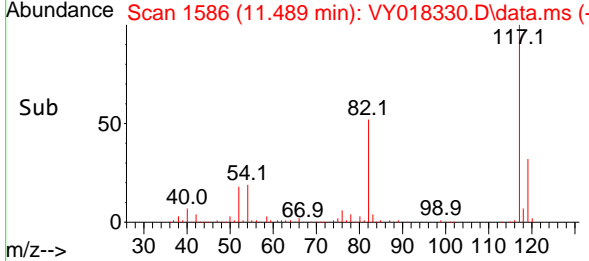
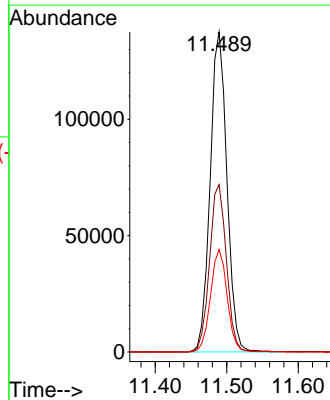
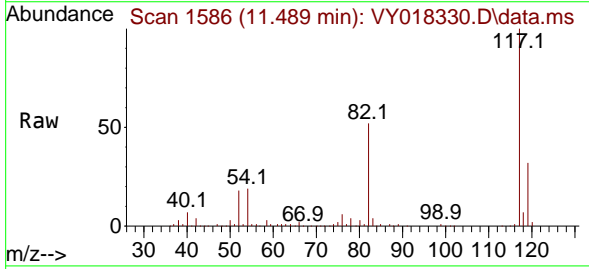
Ion	Ratio	Lower	Upper
95	100		
174	78.4	0.0	175.6
176	75.3	0.0	171.4

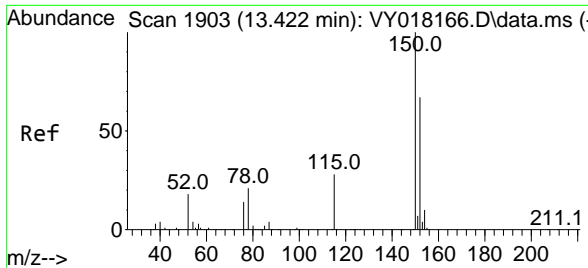


#63
 Chlorobenzene-d5
 Concen: 50.000 ug/l
 RT: 11.489 min Scan# 1586
 Delta R.T. -0.000 min
 Lab File: VY018330.D
 Acq: 20 May 2024 13:15

Tgt Ion: 117 Resp: 223906

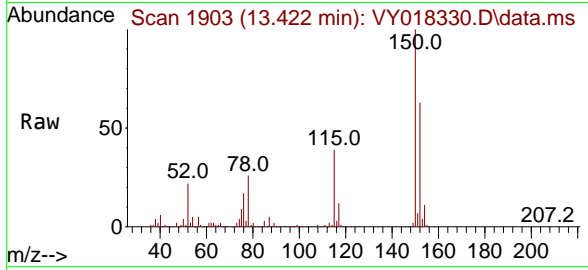
Ion	Ratio	Lower	Upper
117	100		
82	52.3	42.4	63.6
119	32.0	25.9	38.9





#72
 1,4-Dichlorobenzene-d4
 Concen: 50.000 ug/l
 RT: 13.422 min Scan# 1903
 Delta R.T. -0.000 min
 Lab File: VY018330.D
 Acq: 20 May 2024 13:15

Instrument : MSVOA_Y
 ClientSampleId : VOC-MH-MM



Tgt Ion:152 Resp: 81854

Ion	Ratio	Lower	Upper
152	100		
115	60.4	28.2	84.7
150	157.4	0.0	345.6

