

Data Path : Z:\voasrv\HPCHEM1\MSVOA\_Y\Data\VY052025\  
 Data File : VY022330.D  
 Acq On : 20 May 2025 09:48  
 Operator : SY/MD  
 Sample : VY0520SBL01  
 Misc : 5.00g/5.0mL/MSVOA\_Y/SOIL  
 ALS Vial : 3 Sample Multiplier: 1

**Instrument :**  
 MSVOA\_Y  
**ClientSampleId :**  
 VY0520SBL01

Quant Time: May 21 01:43:26 2025  
 Quant Method : Z:\voasrv\HPCHEM1\MSVOA\_Y\methods\82Y051525S.M  
 Quant Title : SW846 8260  
 QLast Update : Fri May 16 01:42:09 2025  
 Response via : Initial Calibration

| Compound                   | R.T.   | QIon | Response | Conc   | Units | Dev(Min) |
|----------------------------|--------|------|----------|--------|-------|----------|
| -----                      |        |      |          |        |       |          |
| Internal Standards         |        |      |          |        |       |          |
| 1) Pentafluorobenzene      | 7.707  | 168  | 253729   | 50.000 | ug/l  | 0.00     |
| 34) 1,4-Difluorobenzene    | 8.615  | 114  | 453295   | 50.000 | ug/l  | 0.00     |
| 63) Chlorobenzene-d5       | 11.420 | 117  | 355808   | 50.000 | ug/l  | 0.00     |
| 72) 1,4-Dichlorobenzene-d4 | 13.346 | 152  | 124571   | 50.000 | ug/l  | 0.00     |

|                             |        |       |          |          |      |          |
|-----------------------------|--------|-------|----------|----------|------|----------|
| System Monitoring Compounds |        |       |          |          |      |          |
| 33) 1,2-Dichloroethane-d4   | 8.061  | 65    | 126632   | 45.666   | ug/l | 0.00     |
| Spiked Amount               | 50.000 | Range | 50 - 163 | Recovery | =    | 91.340%  |
| 35) Dibromofluoromethane    | 7.634  | 113   | 130811   | 48.349   | ug/l | 0.00     |
| Spiked Amount               | 50.000 | Range | 54 - 147 | Recovery | =    | 96.700%  |
| 50) Toluene-d8              | 10.109 | 98    | 538600   | 48.607   | ug/l | 0.00     |
| Spiked Amount               | 50.000 | Range | 58 - 134 | Recovery | =    | 97.220%  |
| 62) 4-Bromofluorobenzene    | 12.407 | 95    | 184563   | 52.549   | ug/l | 0.00     |
| Spiked Amount               | 50.000 | Range | 30 - 143 | Recovery | =    | 105.100% |

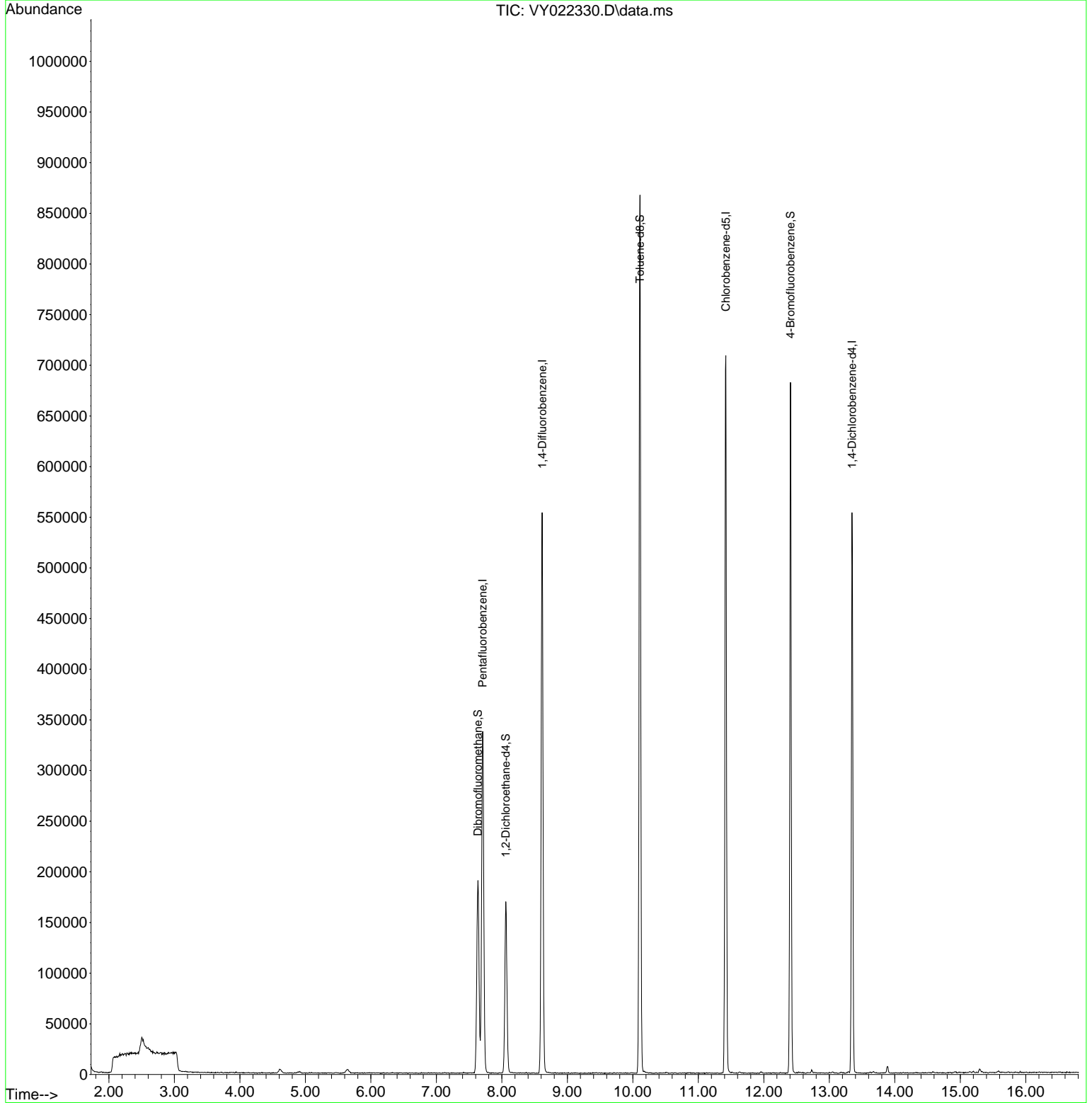
Target Compounds Qvalue  
 -----

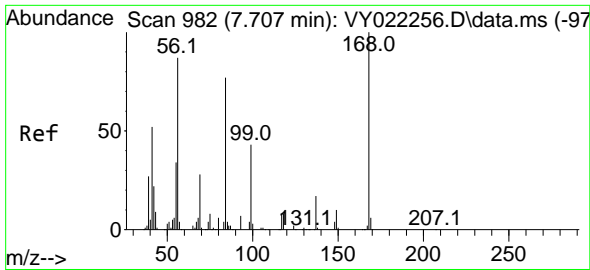
(#) = qualifier out of range (m) = manual integration (+) = signals summed

Data Path : Z:\voasrv\HPCHEM1\MSVOA\_Y\Data\VY052025\  
 Data File : VY022330.D  
 Acq On : 20 May 2025 09:48  
 Operator : SY/MD  
 Sample : VY0520SBL01  
 Misc : 5.00g/5.0mL/MSVOA\_Y/SOIL  
 ALS Vial : 3 Sample Multiplier: 1

Instrument :  
 MSVOA\_Y  
 ClientSampleId :  
 VY0520SBL01

Quant Time: May 21 01:43:26 2025  
 Quant Method : Z:\voasrv\HPCHEM1\MSVOA\_Y\methods\82Y051525S.M  
 Quant Title : SW846 8260  
 QLast Update : Fri May 16 01:42:09 2025  
 Response via : Initial Calibration

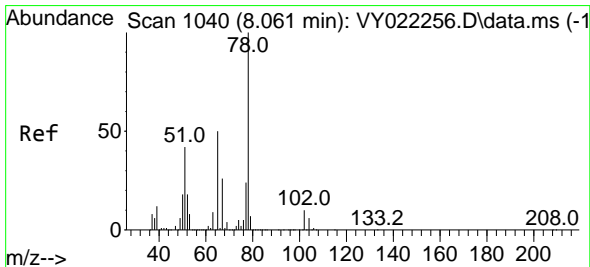
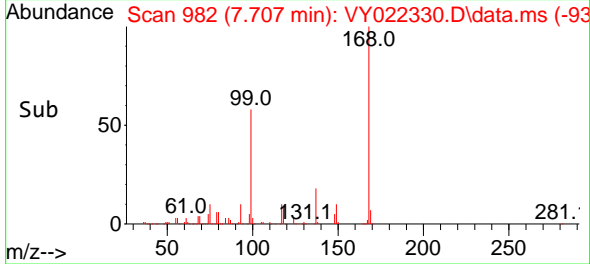
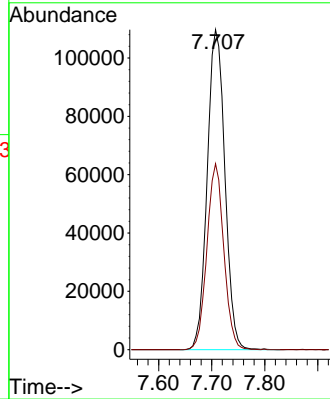
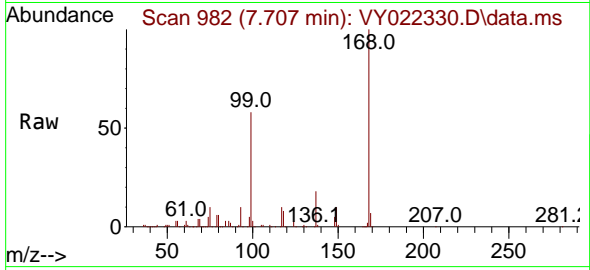




#1  
 Pentafluorobenzene  
 Concen: 50.000 ug/l  
 RT: 7.707 min Scan# 982  
 Delta R.T. 0.000 min  
 Lab File: VY022330.D  
 Acq: 20 May 2025 09:48

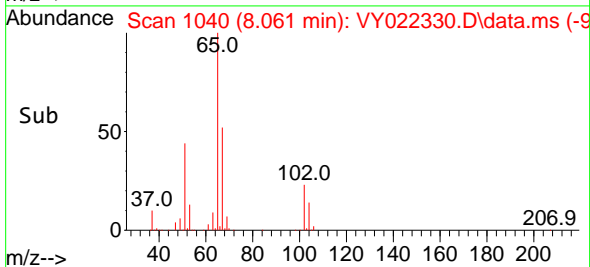
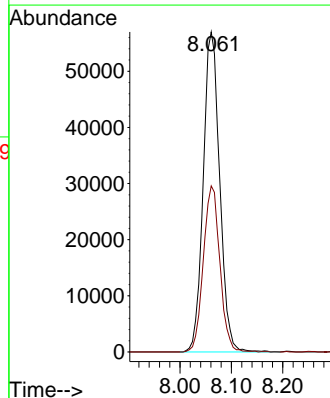
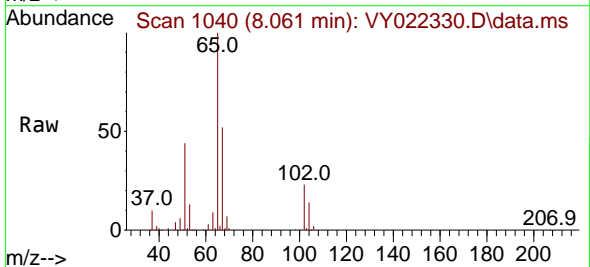
Instrument : MSVOA\_Y  
 ClientSampleId : VY0520SBL01

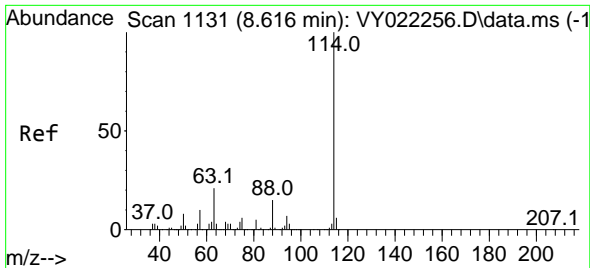
Tgt Ion:168 Resp: 253729  
 Ion Ratio Lower Upper  
 168 100  
 99 58.1 44.2 66.4



#33  
 1,2-Dichloroethane-d4  
 Concen: 45.666 ug/l  
 RT: 8.061 min Scan# 1040  
 Delta R.T. -0.000 min  
 Lab File: VY022330.D  
 Acq: 20 May 2025 09:48

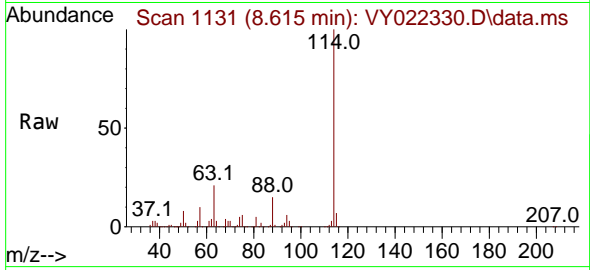
Tgt Ion: 65 Resp: 126632  
 Ion Ratio Lower Upper  
 65 100  
 67 52.1 0.0 104.6



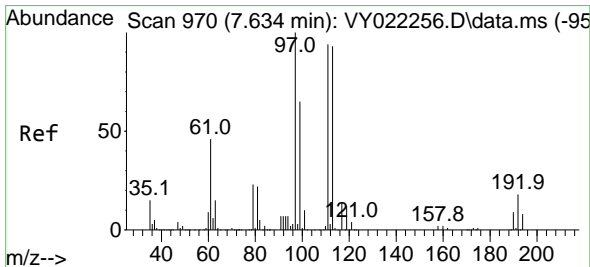
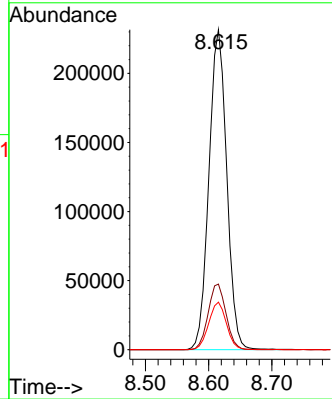
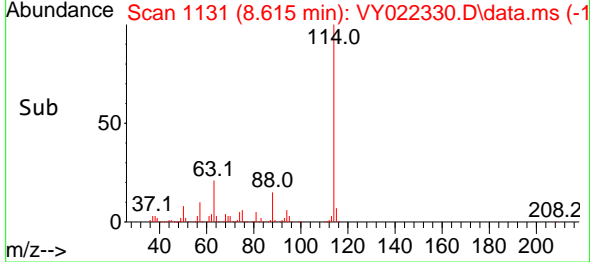


#34  
 1,4-Difluorobenzene  
 Concen: 50.000 ug/l  
 RT: 8.615 min Scan# 1131  
 Delta R.T. -0.000 min  
 Lab File: VY022330.D  
 Acq: 20 May 2025 09:48

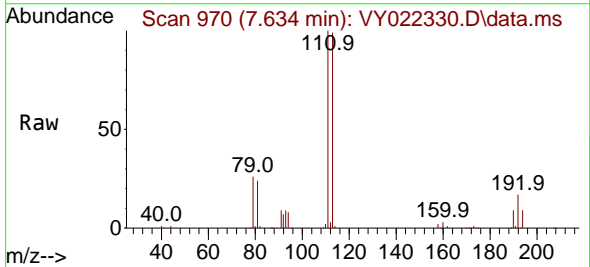
Instrument : MSVOA\_Y  
 ClientSampleId : VY0520SBL01



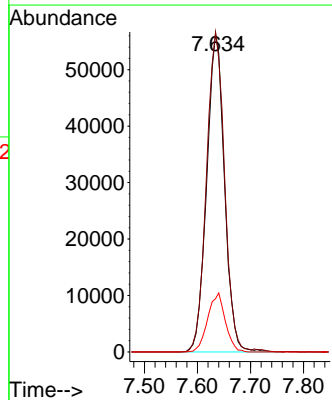
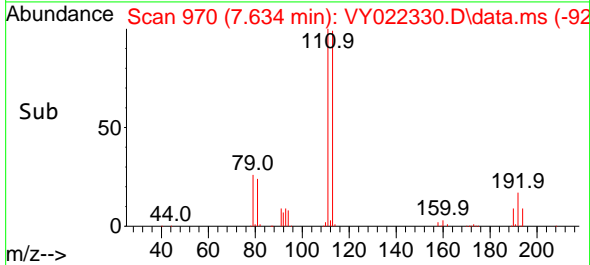
Tgt Ion:114 Resp: 453295  
 Ion Ratio Lower Upper  
 114 100  
 63 20.5 0.0 41.0  
 88 14.9 0.0 29.4

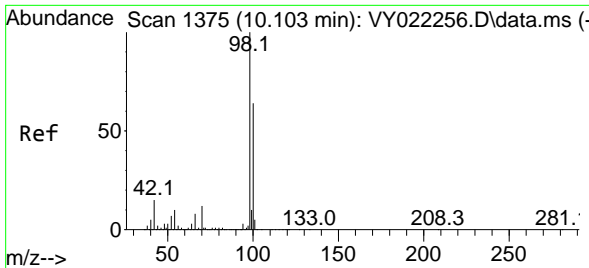


#35  
 Dibromofluoromethane  
 Concen: 48.349 ug/l  
 RT: 7.634 min Scan# 970  
 Delta R.T. -0.000 min  
 Lab File: VY022330.D  
 Acq: 20 May 2025 09:48



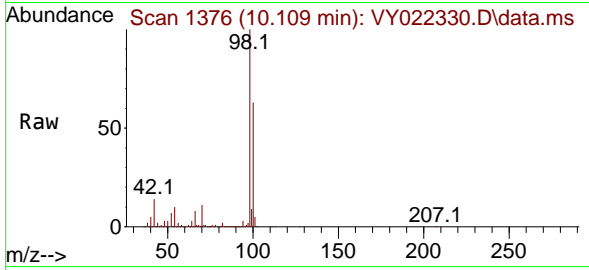
Tgt Ion:113 Resp: 130811  
 Ion Ratio Lower Upper  
 113 100  
 111 102.3 82.6 123.8  
 192 18.4 15.2 22.8



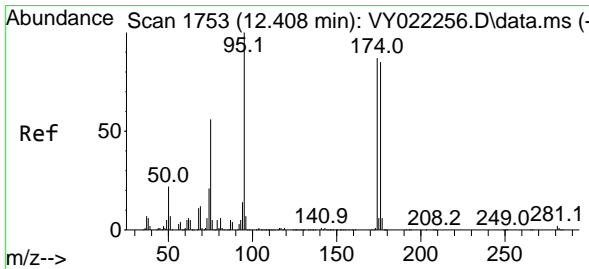
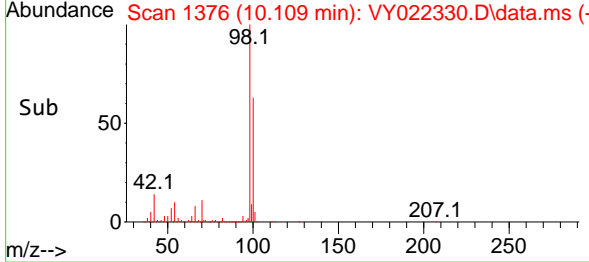
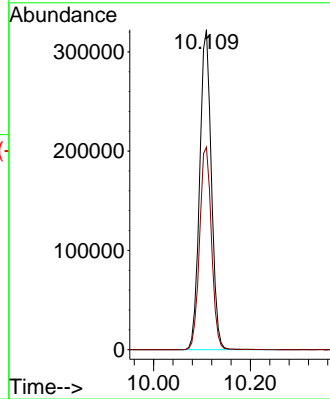


#50  
 Toluene-d8  
 Concen: 48.607 ug/l  
 RT: 10.109 min Scan# 11  
 Delta R.T. 0.006 min  
 Lab File: VY022330.D  
 Acq: 20 May 2025 09:48

Instrument :  
 MSVOA\_Y  
 ClientSampleId :  
 VY0520SBL01

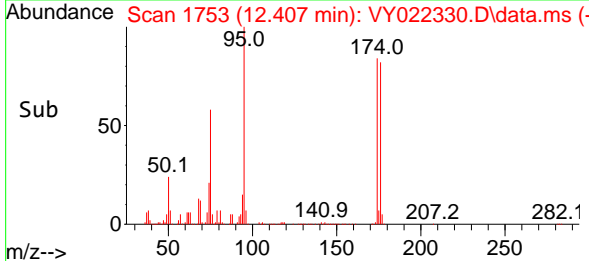
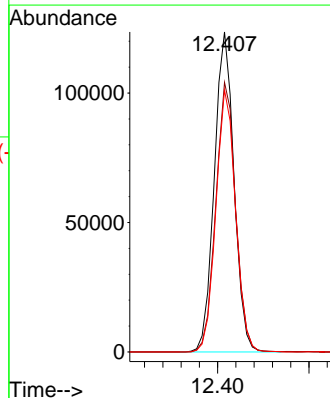
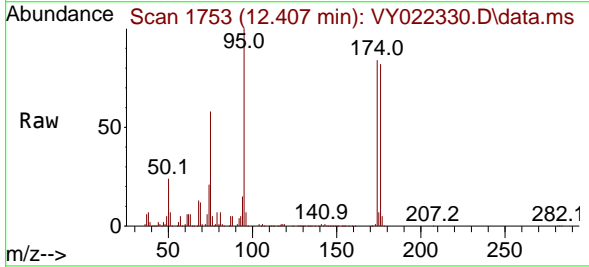


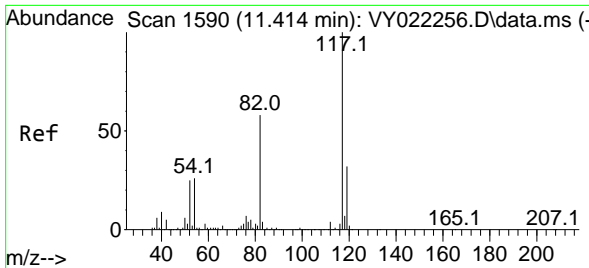
Tgt Ion: 98 Resp: 538600  
 Ion Ratio Lower Upper  
 98 100  
 100 64.5 51.8 77.8



#62  
 4-Bromofluorobenzene  
 Concen: 52.549 ug/l  
 RT: 12.407 min Scan# 1753  
 Delta R.T. -0.000 min  
 Lab File: VY022330.D  
 Acq: 20 May 2025 09:48

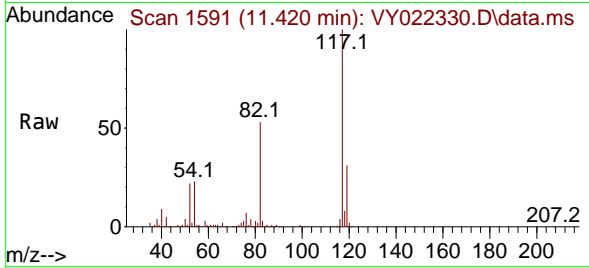
Tgt Ion: 95 Resp: 184563  
 Ion Ratio Lower Upper  
 95 100  
 174 85.0 0.0 166.8  
 176 81.9 0.0 160.8





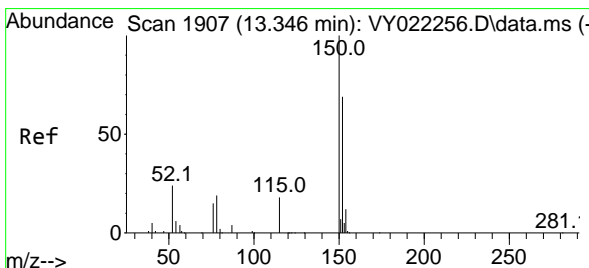
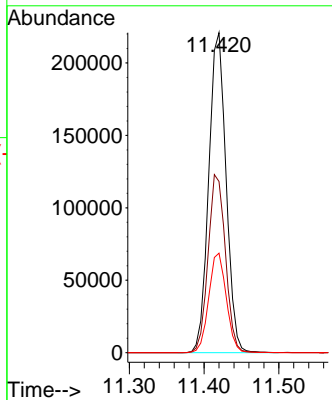
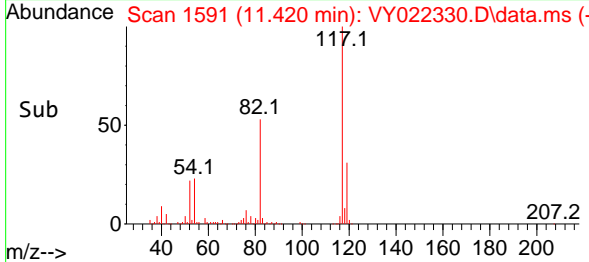
#63  
 Chlorobenzene-d5  
 Concen: 50.000 ug/l  
 RT: 11.420 min Scan# 117  
 Delta R.T. 0.006 min  
 Lab File: VY022330.D  
 Acq: 20 May 2025 09:48

Instrument : MSVOA\_Y  
 ClientSampleId : VY0520SBL01

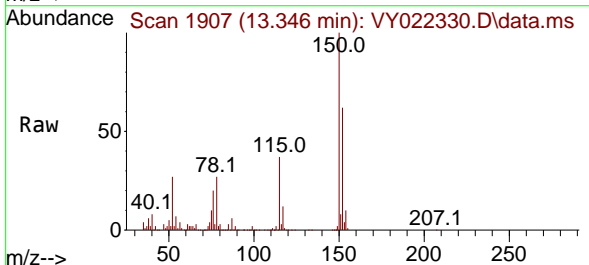


Tgt Ion:117 Resp: 355808

| Ion | Ratio | Lower | Upper |
|-----|-------|-------|-------|
| 117 | 100   |       |       |
| 82  | 53.5  | 46.6  | 70.0  |
| 119 | 31.1  | 25.8  | 38.6  |



#72  
 1,4-Dichlorobenzene-d4  
 Concen: 50.000 ug/l  
 RT: 13.346 min Scan# 1907  
 Delta R.T. -0.000 min  
 Lab File: VY022330.D  
 Acq: 20 May 2025 09:48



Tgt Ion:152 Resp: 124571

| Ion | Ratio | Lower | Upper |
|-----|-------|-------|-------|
| 152 | 100   |       |       |
| 115 | 57.1  | 29.4  | 88.2  |
| 150 | 158.5 | 0.0   | 353.8 |

