

Data Path : Z:\VOASRV\HPCHEM1\MSVOA Y\DATA\VY052720\
 Data File : VY002762.D
 Acq On : 27 May 2020 14:15
 Operator : SY/MD
 Sample : VY0527SBL01
 Misc : 5.00G/5ML/MSVOA Y/SOIL
 ALS Vial : 10 Sample Multiplier: 1

Instrument :
 MSVOA_Y
ClientSampleId :
 VY0527SBL01

Quant Time: May 28 05:10:37 2020
 Quant Method : Z:\VOASRV\HPCHEM1\MSVOA_Y\METHODS\82Y052720S.M
 Quant Title : SW846 8260
 QLast Update : Wed May 27 13:13:33 2020
 Response via : Initial Calibration

Internal Standards	R.T.	QIon	Response	Conc	Units	Dev(Min)
1) Pentafluorobenzene	7.80	168	285888	50.00	ug/l	0.00
34) 1,4-Difluorobenzene	8.69	114	459332	50.00	ug/l	0.00
63) Chlorobenzene-d5	11.49	117	430853	50.00	ug/l	0.00
72) 1,4-Dichlorobenzene-d4	13.42	152	215791	50.00	ug/l	0.00

System Monitoring Compounds

33) 1,2-Dichloroethane-d4	8.14	65	140179	56.47	ug/l	0.00
Spiked Amount				50.000		
			Recovery	=	112.94%	
35) Dibromofluoromethane	7.72	113	138360	51.40	ug/l	0.00
Spiked Amount				50.000		
			Recovery	=	102.80%	
50) Toluene-d8	10.18	98	534354	49.09	ug/l	0.00
Spiked Amount				50.000		
			Recovery	=	98.18%	
62) 4-Bromofluorobenzene	12.48	95	186858	50.24	ug/l	0.00
Spiked Amount				50.000		
			Recovery	=	100.48%	

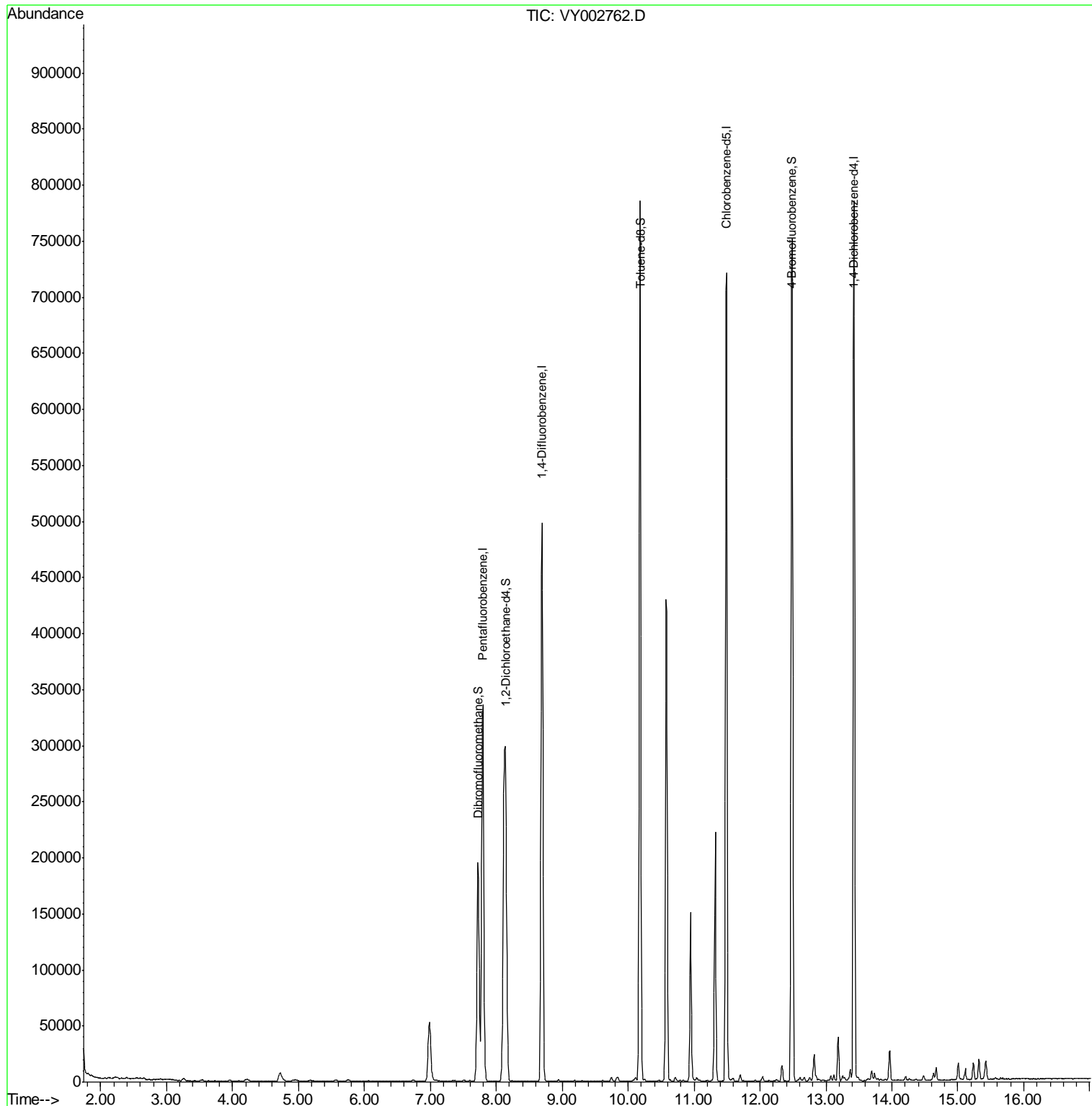
Target Compounds Qvalue

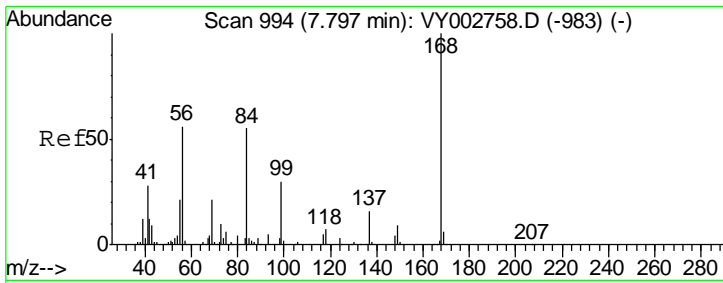
(#) = qualifier out of range (m) = manual integration (+) = signals summed

Data Path : Z:\VOASRV\HPCHEM1\MSVOA Y\DATA\VY052720\
 Data File : VY002762.D
 Acq On : 27 May 2020 14:15
 Operator : SY/MD
 Sample : VY0527SBL01
 Misc : 5.00G/5ML/MSVOA Y/SOIL
 ALS Vial : 10 Sample Multiplier: 1

Instrument :
 MSVOA_Y
 ClientSampleID :
 VY0527SBL01

Quant Time: May 28 05:10:37 2020
 Quant Method : Z:\VOASRV\HPCHEM1\MSVOA_Y\METHODS\82Y052720S.M
 Quant Title : SW846 8260
 QLast Update : Wed May 27 13:13:33 2020
 Response via : Initial Calibration

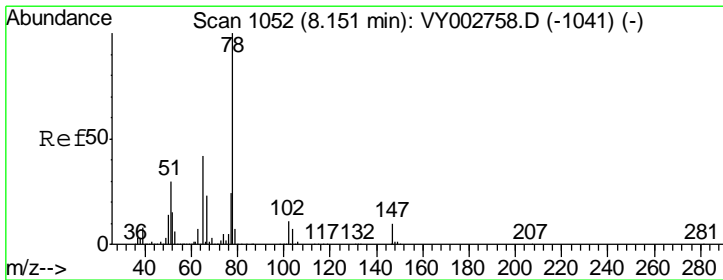
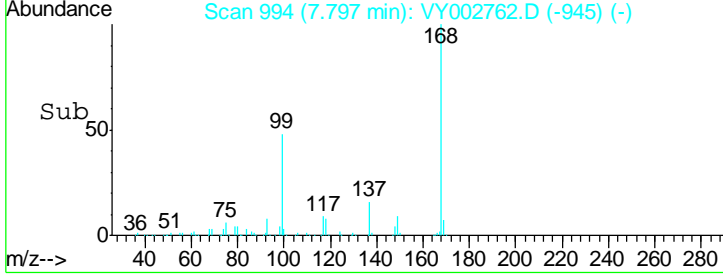
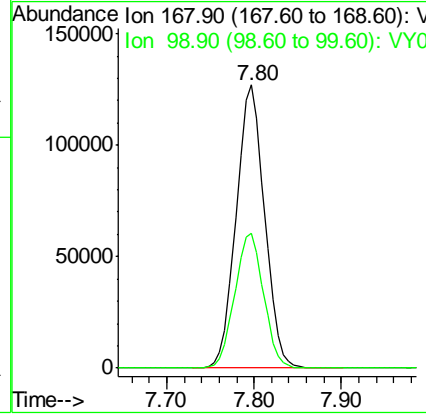
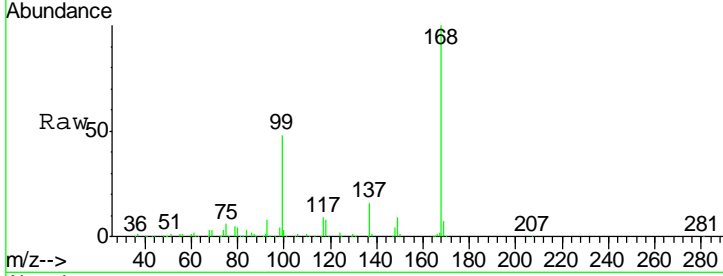




#1
 Pentafluorobenzene
 Concen: 50.000 ug/l
 RT: 7.80 min Scan# 994
 Delta R.T. -0.00 min
 Lab File: VY002762.D
 Acq: 27 May 2020 14:15

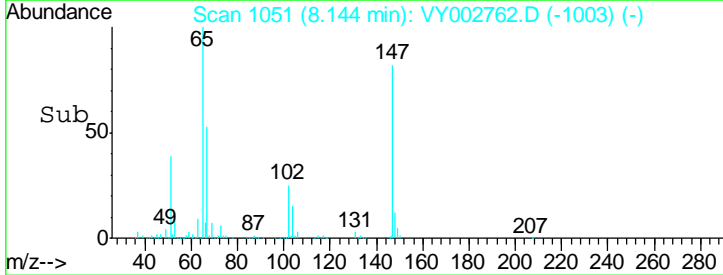
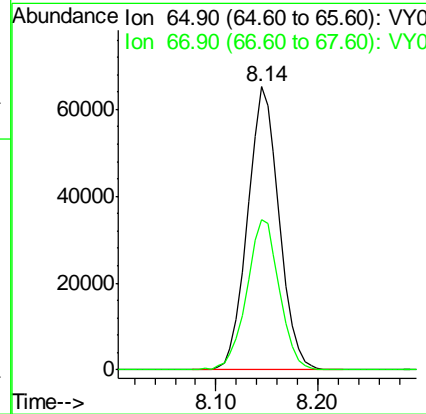
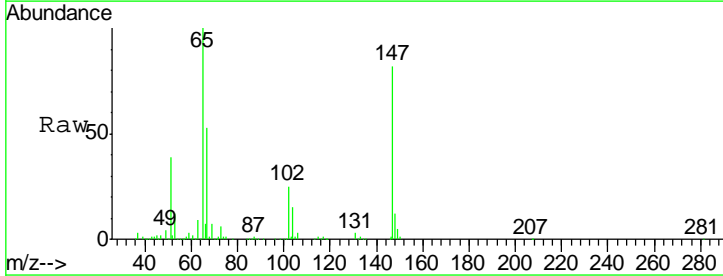
Instrument : MSVOA_Y
 ClientSampleID : VY0527SBL01

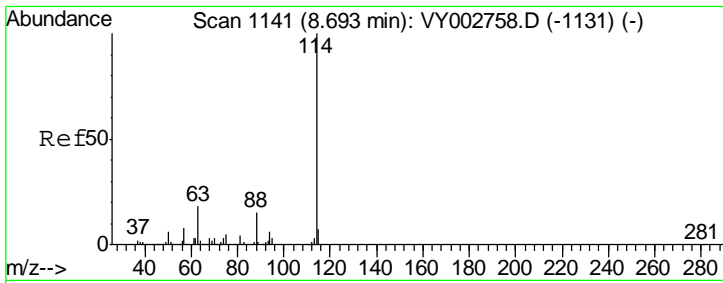
Tgt Ion	Resp	Lower	Upper
168	100		
99	47.8	39.0	58.4



#33
 1,2-Dichloroethane-d4
 Concen: 56.471 ug/l
 RT: 8.14 min Scan# 1051
 Delta R.T. -0.01 min
 Lab File: VY002762.D
 Acq: 27 May 2020 14:15

Tgt Ion	Resp	Lower	Upper
65	100		
67	55.2	0.0	111.0

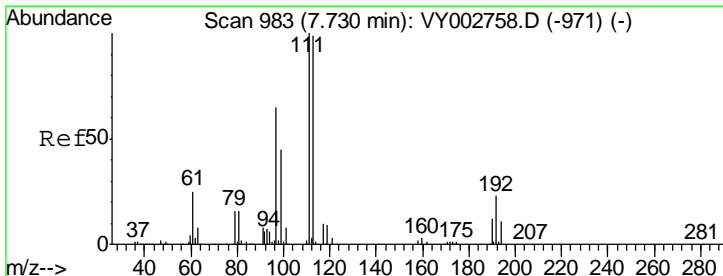
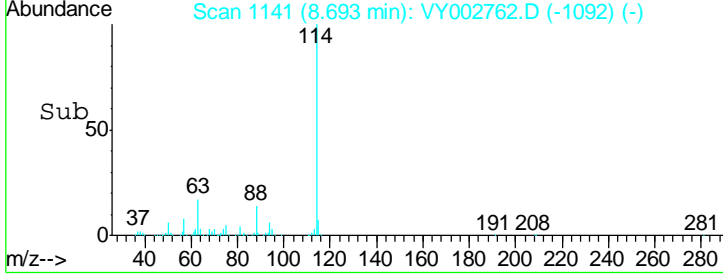
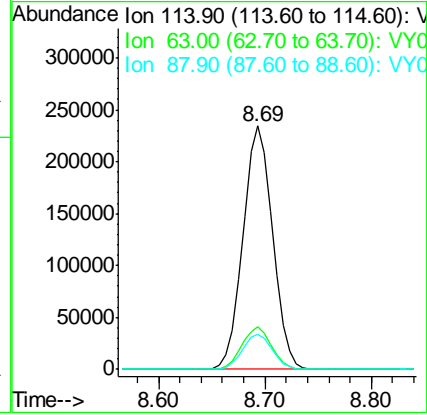
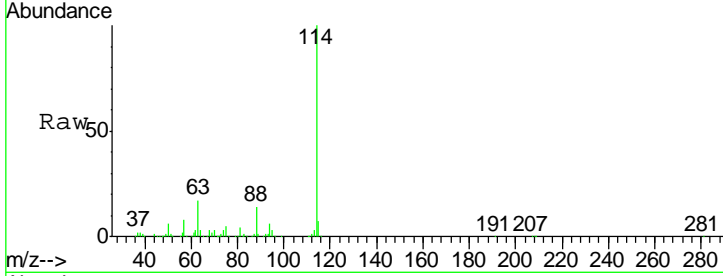




#34
 1,4-Difluorobenzene
 Concen: 50.000 ug/l
 RT: 8.69 min Scan# 1141
 Delta R.T. -0.00 min
 Lab File: VY002762.D
 Acq: 27 May 2020 14:15

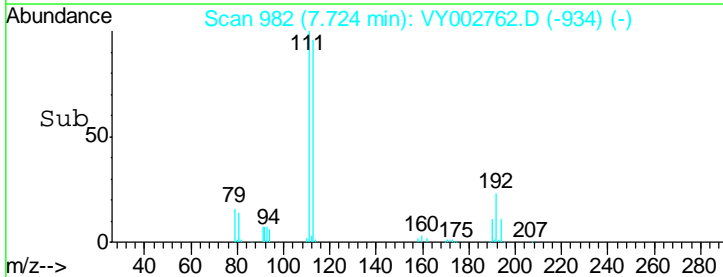
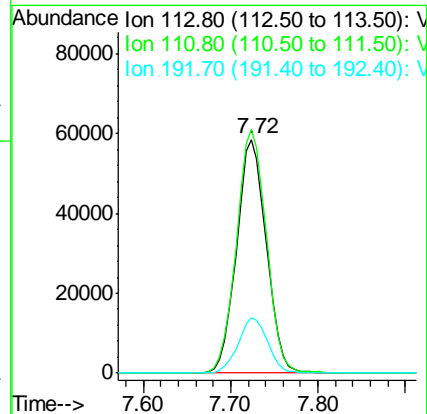
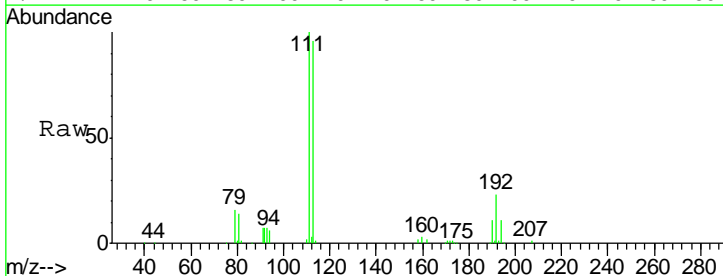
Instrument :
 MSVOA_Y
 ClientSampled :
 VY0527SBL01

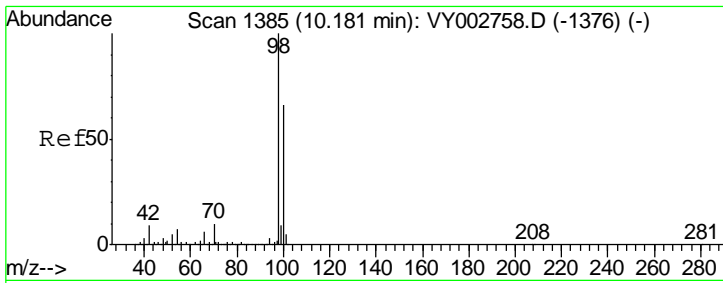
Tgt Ion	Resp	Lower	Upper
114	100		
63	17.3	0.0	35.2
88	14.3	0.0	29.2



#35
 Dibromofluoromethane
 Concen: 51.398 ug/l
 RT: 7.72 min Scan# 982
 Delta R.T. -0.01 min
 Lab File: VY002762.D
 Acq: 27 May 2020 14:15

Tgt Ion	Resp	Lower	Upper
113	100		
111	105.1	82.0	123.0
192	23.3	18.9	28.3

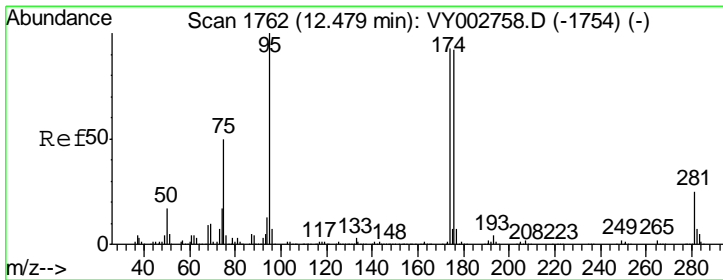
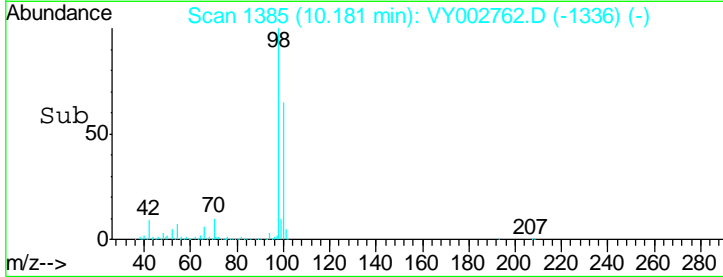
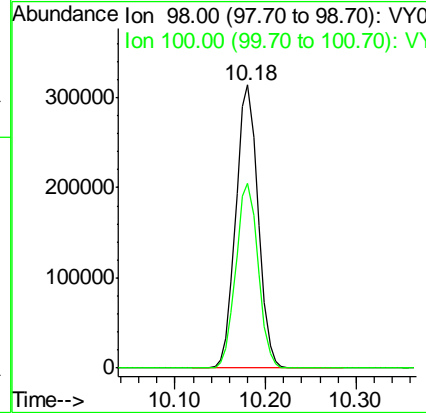
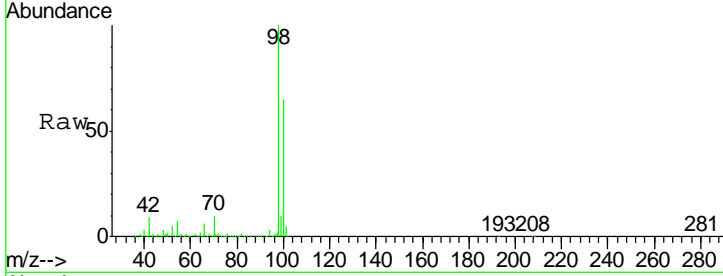




#50
 Toluene-d8
 Concen: 49.095 ug/l
 RT: 10.18 min Scan# 1385
 Delta R.T. -0.00 min
 Lab File: VY002762.D
 Acq: 27 May 2020 14:15

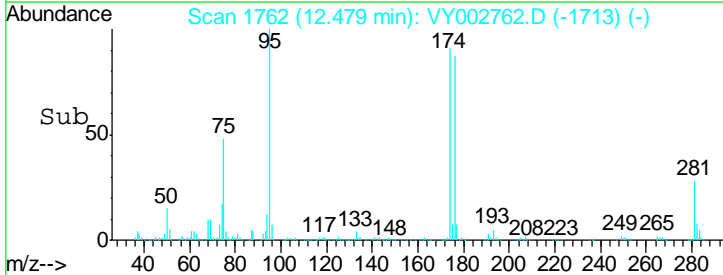
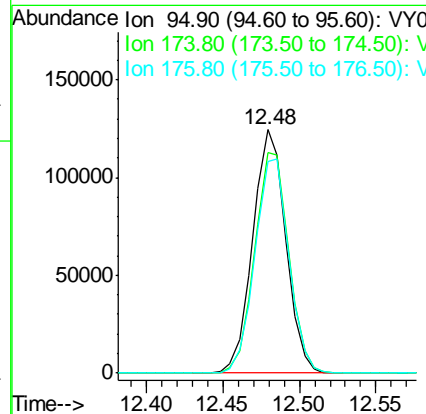
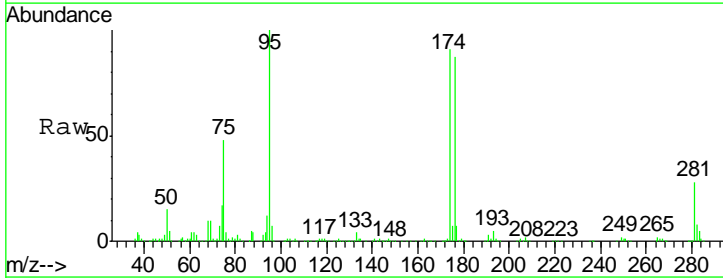
Instrument : MSVOA_Y
 ClientSampled : VY0527SBL01

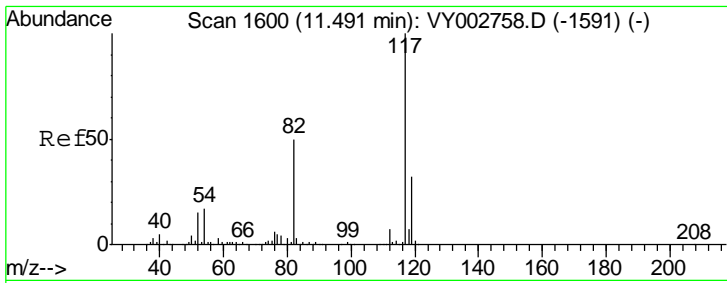
Tgt Ion	Resp	Lower	Upper
98	534354		
100	100	65.2	78.2



#62
 4-Bromofluorobenzene
 Concen: 50.235 ug/l
 RT: 12.48 min Scan# 1762
 Delta R.T. -0.00 min
 Lab File: VY002762.D
 Acq: 27 May 2020 14:15

Tgt Ion	Resp	Lower	Upper
95	186858		
174	100	93.3	191.2
176	90.7	0.0	188.8

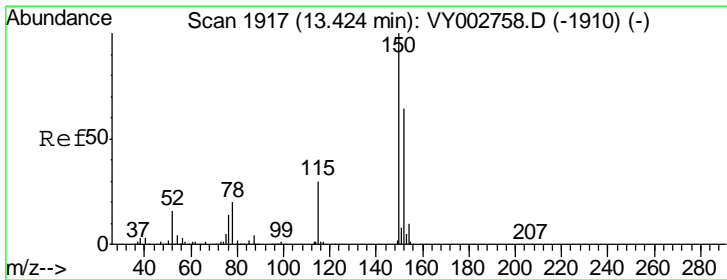
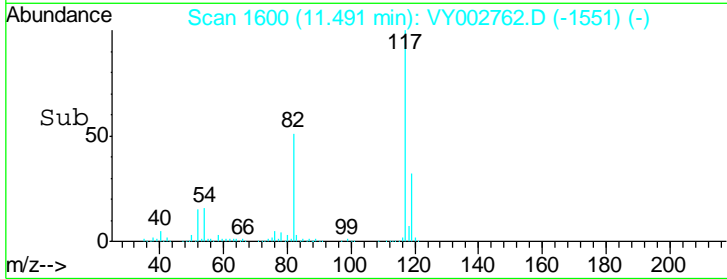
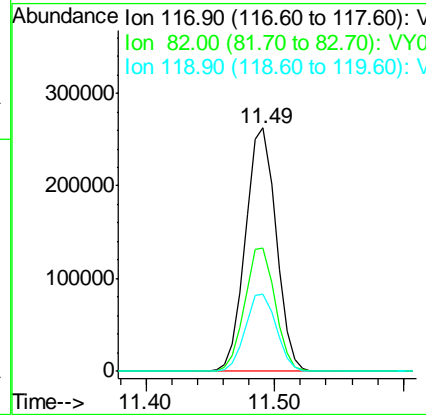
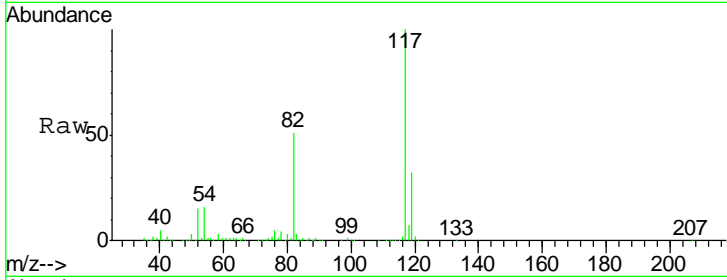




#63
 Chlorobenzene-d5
 Concen: 50.000 ug/l
 RT: 11.49 min Scan# 1600
 Delta R.T. -0.00 min
 Lab File: VY002762.D
 Acq: 27 May 2020 14:15

Instrument :
 MSVOA_Y
 ClientSampled :
 VY0527SBL01

Tgt Ion	Resp	Lower	Upper
117	430853		
82	50.9	40.2	60.4
119	31.8	25.8	38.8



#72
 1,4-Dichlorobenzene-d4
 Concen: 50.000 ug/l
 RT: 13.42 min Scan# 1917
 Delta R.T. -0.00 min
 Lab File: VY002762.D
 Acq: 27 May 2020 14:15

Tgt Ion	Resp	Lower	Upper
152	215791		
115	54.4	27.0	81.0
150	156.2	0.0	344.8

