

Data Path : Z:\VOASRV\HPCHEM1\MSVOA Y\DATA\VY052820\
 Data File : VY002785.D
 Acq On : 28 May 2020 12:09
 Operator : SY/MD
 Sample : L2505-06
 Misc : 8.77G/5ML/MSVOA Y/SOIL
 ALS Vial : 6 Sample Multiplier: 1

Instrument :
 MSVOA_Y
 ClientSampleId :
 SU-01-052720

Integration Parameters: RTEINT.P

Integrator: RTE
 Smoothing : ON Filtering: 5
 Sampling : 1 Min Area: 3 % of largest Peak
 Start Thrs: 0.2 Max Peaks: 100
 Stop Thrs : 0 Peak Location: TOP

If leading or trailing edge < 100 prefer < Baseline drop else tangent >
 Peak separation: 5

Method : Z:\VOASRV\HPCHEM1\MSVOA_Y\METHODS\82Y052720S.M
 Title : SW846 8260

Signal : TIC

peak #	R.T. min	first scan	max scan	last scan	PK TY	peak height	corr. area	corr. % max.	% of total
1	4.731	481	491	498	rBV2	6357	19723	1.72%	0.293%
2	7.724	970	982	988	rBV	166252	401161	34.97%	5.959%
3	7.797	988	994	1006	rVB	285658	638438	55.66%	9.483%
4	8.151	1043	1052	1064	rBV	156822	340682	29.70%	5.060%
5	8.693	1131	1141	1153	rBV	430218	832206	72.55%	12.361%
6	10.181	1376	1385	1394	rBV	679205	1147053	100.00%	17.038%
7	11.492	1592	1600	1610	rVB	602520	989960	86.30%	14.705%
8	11.705	1626	1635	1638	rBV8	5341	13512	1.18%	0.201%
9	12.479	1755	1762	1772	rBV	488977	759424	66.21%	11.280%
10	12.808	1811	1816	1821	rVB2	14569	23675	2.06%	0.352%
11	13.119	1862	1867	1873	rVB	7757	11568	1.01%	0.172%
12	13.424	1910	1917	1926	rVB	602944	923283	80.49%	13.714%
13	13.625	1943	1950	1953	rVV3	12550	21063	1.84%	0.313%
14	13.668	1953	1957	1965	rVV6	9845	24078	2.10%	0.358%
15	13.753	1965	1971	1975	rVV5	13373	23355	2.04%	0.347%
16	13.967	2000	2006	2011	rVB2	18734	29828	2.60%	0.443%
17	14.076	2019	2024	2029	rBV2	16862	27145	2.37%	0.403%
18	14.381	2070	2074	2077	rBV2	9732	12074	1.05%	0.179%
19	14.418	2077	2080	2085	rVV3	10406	14832	1.29%	0.220%
20	14.613	2108	2112	2117	rVB6	13284	19562	1.71%	0.291%
21	14.680	2117	2123	2129	rBV5	24236	59534	5.19%	0.884%
22	14.735	2129	2132	2139	rVB6	8041	15504	1.35%	0.230%
23	14.832	2144	2148	2152	rVV2	10852	15864	1.38%	0.236%
24	14.942	2162	2166	2170	rBV2	11386	18628	1.62%	0.277%
25	15.052	2179	2184	2189	rBV2	10439	22704	1.98%	0.337%
26	15.235	2204	2214	2219	rBV	18818	43846	3.82%	0.651%
27	15.296	2219	2224	2229	rVV2	9879	19064	1.66%	0.283%
28	15.369	2229	2236	2239	rVV4	10583	31384	2.74%	0.466%
29	15.436	2243	2247	2254	rVB8	10107	19147	1.67%	0.284%
30	15.527	2256	2262	2270	rBV5	6442	16668	1.45%	0.248%
31	15.686	2280	2288	2291	rBV8	8267	20445	1.78%	0.304%
32	15.729	2291	2295	2300	rVB3	12513	20488	1.79%	0.304%
33	15.887	2315	2321	2335	rVB9	8572	26942	2.35%	0.400%
34	16.040	2338	2346	2351	rBV4	12452	27698	2.41%	0.411%

Data Path : Z:\VOASRV\HPCHEM1\MSVOA Y\DATA\VY052820\
Data File : VY002785.D
Acq On : 28 May 2020 12:09
Operator : SY/MD
Sample : L2505-06
Misc : 8.77G/5ML/MSVOA Y/SOIL
ALS Vial : 6 Sample Multiplier: 1

Instrument :
MSVOA_Y
ClientSampleId :
SU-01-052720

Integration Parameters: RTEINT.P
Integrator: RTE
Smoothing : ON Filtering: 5
Sampling : 1 Min Area: 3 % of largest Peak
Start Thrs: 0.2 Max Peaks: 100
Stop Thrs : 0 Peak Location: TOP

If leading or trailing edge < 100 prefer < Baseline drop else tangent >
Peak separation: 5

Method : Z:\VOASRV\HPCHEM1\MSVOA_Y\METHODS\82Y052720S.M
Title : SW846 8260

35	16.228	2370	2377	2383	rBV5	11121	24181	2.11%	0.359%
36	16.296	2383	2388	2396	rBV2	14431	29670	2.59%	0.441%
37	16.491	2413	2420	2426	rBV	15623	36208	3.16%	0.538%
38	16.625	2436	2442	2452	rVB	4625	11712	1.02%	0.174%

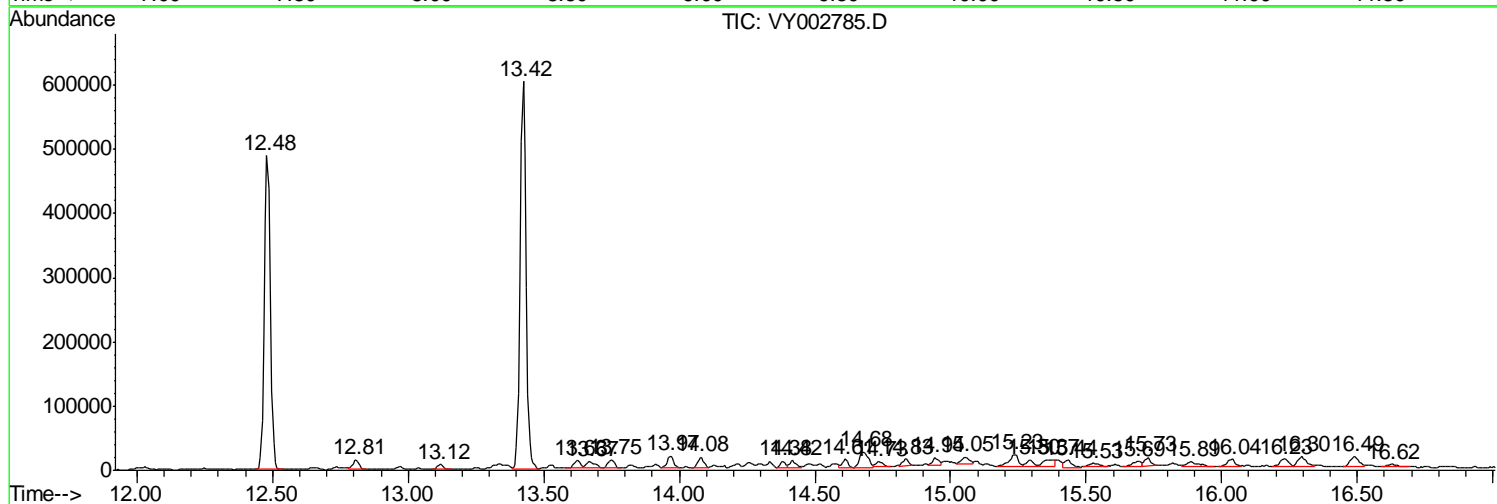
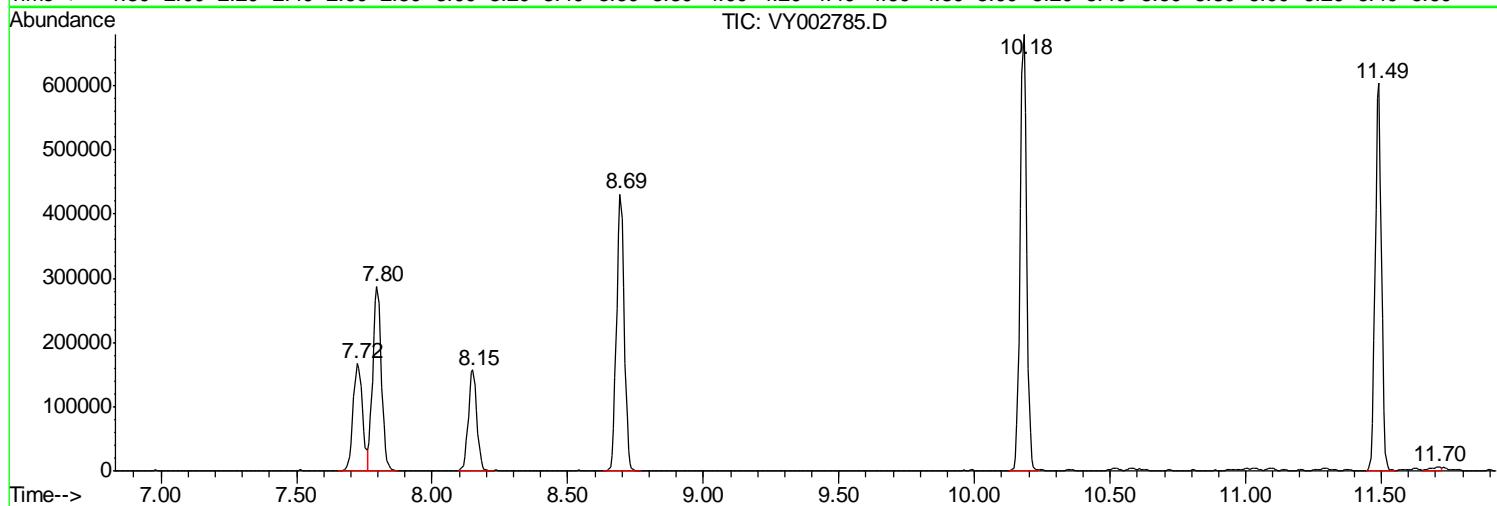
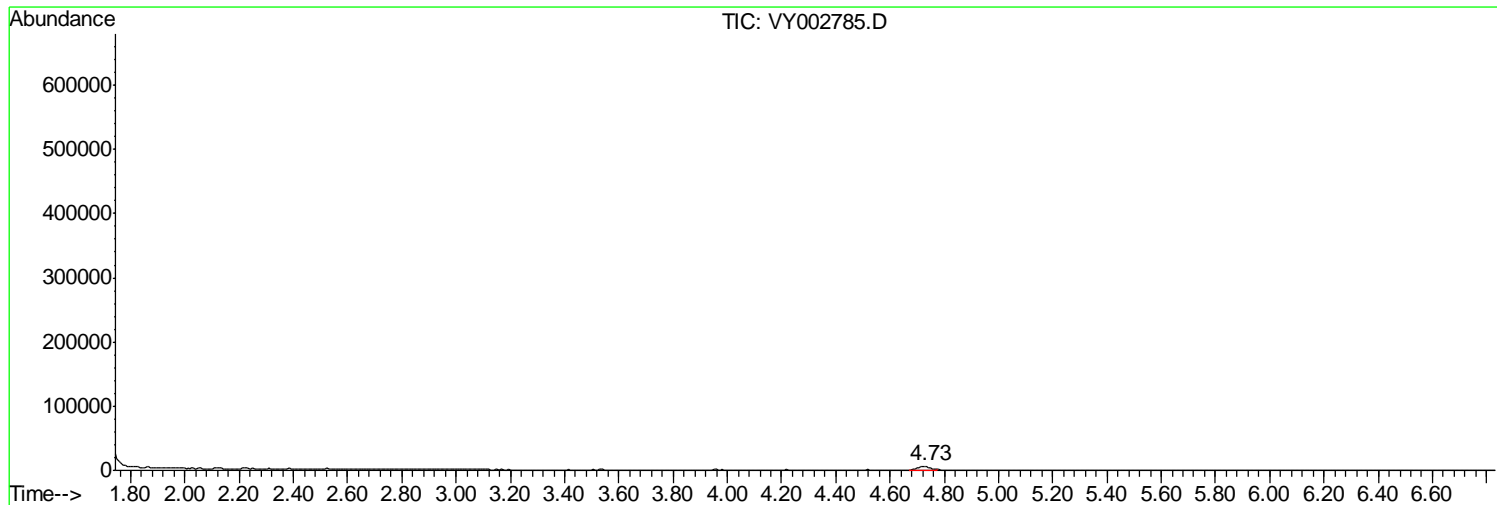
Sum of corrected areas: 6732309

Data Path : Z:\VOASRV\HPCHEM1\MSVOA Y\DATA\VY052820\
 Data File : VY002785.D
 Acq On : 28 May 2020 12:09
 Operator : SY/MD
 Sample : L2505-06
 Misc : 8.77G/5ML/MSVOA Y/SOIL
 ALS Vial : 6 Sample Multiplier: 1

Instrument :
 MSVOA_Y
 ClientSampleId :
 SU-01-052720

Quant Method : Z:\VOASRV\HPCHEM1\MSVOA_Y\METHODS\82Y052720S.M
 Quant Title : SW846 8260

TIC Library : C:\DATABASE\NIST11.L
 TIC Integration Parameters: LSCINT.P



Data Path : Z:\VOASRV\HPCHEM1\MSVOA_Y\DATA\VY052820\
Data File : VY002785.D
Acq On : 28 May 2020 12:09
Operator : SY/MD
Sample : L2505-06
Misc : 8.77G/5ML/MSVOA_Y/SOIL
ALS Vial : 6 Sample Multiplier: 1

Instrument :
MSVOA_Y
ClientSampleId :
SU-01-052720

Quant Method : Z:\VOASRV\HPCHEM1\MSVOA_Y\METHODS\82Y052720S.M
Quant Title : SW846 8260

TIC Library : C:\DATABASE\NIST11.L
TIC Integration Parameters: LSCINT.P

No Library Search Compounds Detected

Data Path : Z:\VOASRV\HPCHEM1\MSVOA_Y\DATA\VY052820\
Data File : VY002785.D
Acq On : 28 May 2020 12:09
Operator : SY/MD
Sample : L2505-06
Misc : 8.77G/5ML/MSVOA_Y/SOIL
ALS Vial : 6 Sample Multiplier: 1

Instrument :
MSVOA_Y
ClientSampleId :
SU-01-052720

Quant Method : Z:\VOASRV\HPCHEM1\MSVOA_Y\METHODS\82Y052720S.M
Quant Title : SW846 8260

TIC Library : C:\DATABASE\NIST11.L
TIC Integration Parameters: LSCINT.P

TIC Top Hit name	RT	EstConc	Units	Response	--Internal Standard--			
					#	RT	Resp	Conc
