

Data Path : Z:\voasrv\HPCHEM1\MSVOA_Y\Data\VY053123\
 Data File : VY013939.D
 Acq On : 31 May 2023 16:35
 Operator : KP/MD
 Sample : 02955-11
 Misc : 5.07g/5.0mL/MSVOA_Y/SOIL
 ALS Vial : 8 Sample Multiplier: 1

Instrument :
 MSVOA_Y
 ClientSampleId :
 SB21RE

Quant Time: May 31 17:33:15 2023
 Quant Method : Z:\voasrv\HPCHEM1\MSVOA_Y\methods\82Y052323S.M
 Quant Title : SW846 8260
 QLast Update : Wed May 24 05:25:47 2023
 Response via : Initial Calibration

Compound	R.T.	QIon	Response	Conc	Units	Dev(Min)

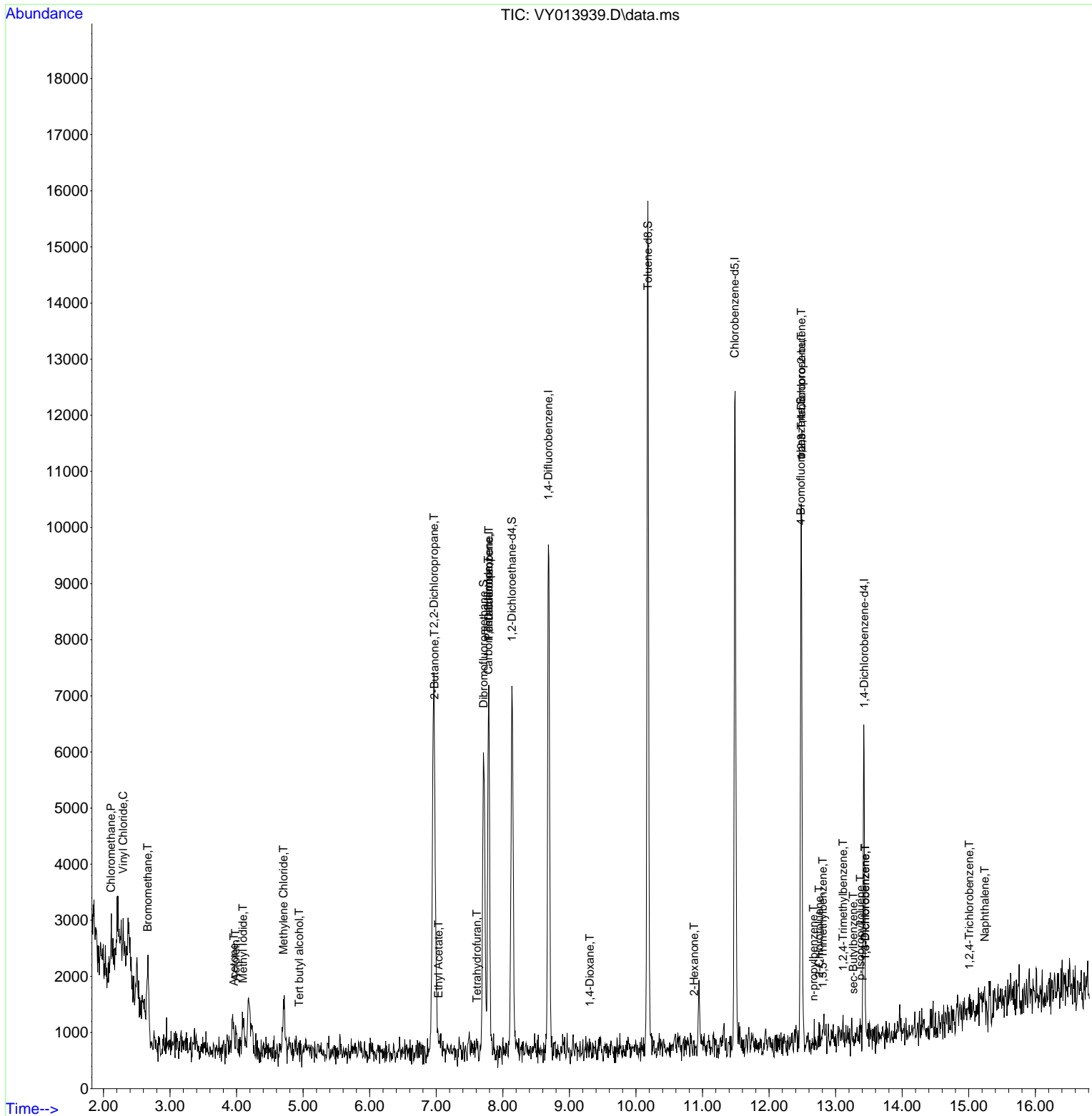
Internal Standards						
1) Pentafluorobenzene	7.789	168	5021	50.000	ug/l	0.00
34) 1,4-Difluorobenzene	8.685	114	8360	50.000	ug/l	-0.01
63) Chlorobenzene-d5	11.483	117	6592	50.000	ug/l	0.00
72) 1,4-Dichlorobenzene-d4	13.428	152	1369	50.000	ug/l	0.00
System Monitoring Compounds						
33) 1,2-Dichloroethane-d4	8.136	65	5239	90.191	ug/l	-0.01
Spiked Amount	50.000	Range	50 - 163	Recovery	=	180.380%#
35) Dibromofluoromethane	7.710	113	3928	72.755	ug/l	-0.01
Spiked Amount	50.000	Range	54 - 147	Recovery	=	145.520%
50) Toluene-d8	10.179	98	10464	50.995	ug/l	0.00
Spiked Amount	50.000	Range	58 - 134	Recovery	=	102.000%
62) 4-Bromofluorobenzene	12.477	95	2630	38.559	ug/l	0.00
Spiked Amount	50.000	Range	30 - 143	Recovery	=	77.120%
Target Compounds						
						Qvalue
3) Chloromethane	2.113	50	437	7.799	ug/l	94
4) Vinyl Chloride	2.296	62	58	1.012	ug/l #	44
5) Bromomethane	2.662	94	440	9.663	ug/l	89
10) Methyl Iodide	4.095	142	1078	17.369	ug/l #	93
11) Tert butyl alcohol	4.942	59	126	28.315	ug/l #	73
13) Acrolein	3.985	56	42	6.275	ug/l #	15
16) Acetone	3.960	43	370	21.461	ug/l	93
20) Methylene Chloride	4.704	84	441	4.924	ug/l #	65
25) 2-Butanone	6.972	43	168	7.986	ug/l #	72
26) 2,2-Dichloropropane	6.966	77	442	4.855	ug/l #	53
29) Tetrahydrofuran	7.612	42	25	1.990	ug/l #	36
36) 1,1-Dichloropropene	7.789	75	368	4.475	ug/l #	42
37) Ethyl Acetate	7.033	43	66	1.316	ug/l #	71
38) Carbon Tetrachloride	7.783	117	619	6.619	ug/l #	13
49) 1,4-Dioxane	9.307	88	23	56.477	ug/l #	13
59) 2-Hexanone	10.874	43	45	1.299	ug/l #	28
76) 1,2,3-Trichloropropane	12.483	75	1238	76.693	ug/l #	100
78) n-propylbenzene	12.666	91	140	1.112	ug/l #	53
79) 2-Chlorotoluene	12.752	91	158	2.247	ug/l #	39
80) 1,3,5-Trimethylbenzene	12.806	105	216	2.568	ug/l #	29
81) trans-1,4-Dichloro-2-b...	12.483	75	1238	166.476	ug/l #	10
84) 1,2,4-Trimethylbenzene	13.111	105	105	1.272	ug/l #	31
85) sec-Butylbenzene	13.264	105	170	1.562	ug/l	86
86) p-Isopropyltoluene	13.373	119	171	1.901	ug/l #	49
87) 1,3-Dichlorobenzene	13.447	146	70	1.450	ug/l	74
88) 1,4-Dichlorobenzene	13.447	146	70	1.456	ug/l	73
93) 1,2,4-Trichlorobenzene	15.007	180	123	4.623	ug/l #	12
95) Naphthalene	15.239	128	361	10.165	ug/l #	68

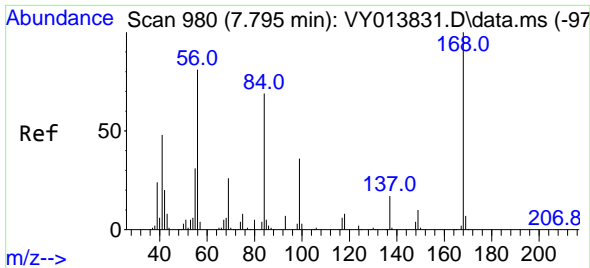
(#) = qualifier out of range (m) = manual integration (+) = signals summed

Data Path : Z:\voasrv\HPCHEM1\MSVOA_Y\Data\VY053123\
 Data File : VY013939.D
 Acq On : 31 May 2023 16:35
 Operator : KP/MD
 Sample : 02955-11
 Misc : 5.07g/5.0mL/MSVOA_Y/SOIL
 ALS Vial : 8 Sample Multiplier: 1

Instrument :
 MSVOA_Y
 ClientSampleId :
 SB21RE

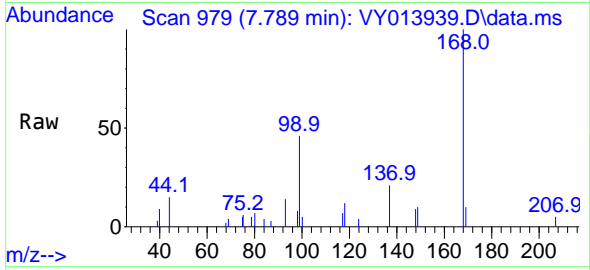
Quant Time: May 31 17:33:15 2023
 Quant Method : Z:\voasrv\HPCHEM1\MSVOA_Y\methods\82Y052323S.M
 Quant Title : SW846 8260
 QLast Update : Wed May 24 05:25:47 2023
 Response via : Initial Calibration



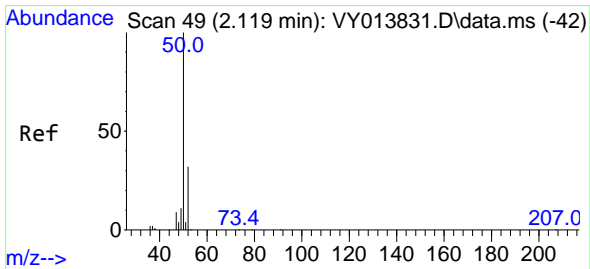
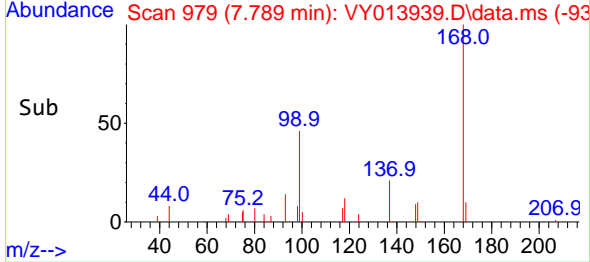
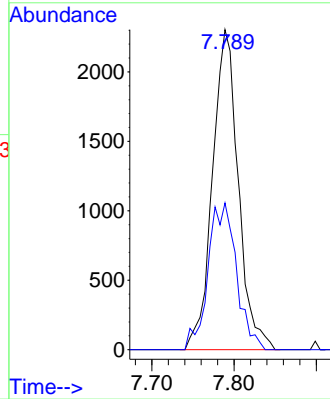


#1
 Pentafluorobenzene
 Concen: 50.000 ug/l
 RT: 7.789 min Scan# 91
 Delta R.T. -0.006 min
 Lab File: VY013939.D
 Acq: 31 May 2023 16:35

Instrument :
 MSVOA_Y
 ClientSampleId :
 SB21RE

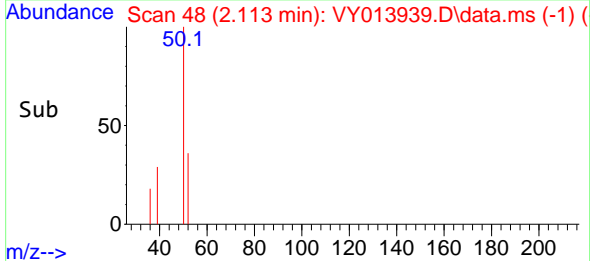
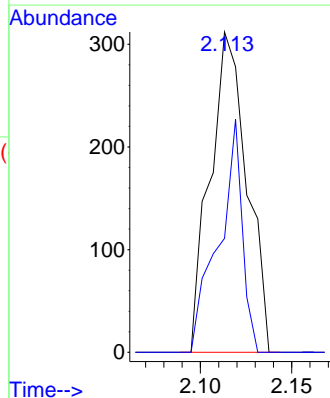
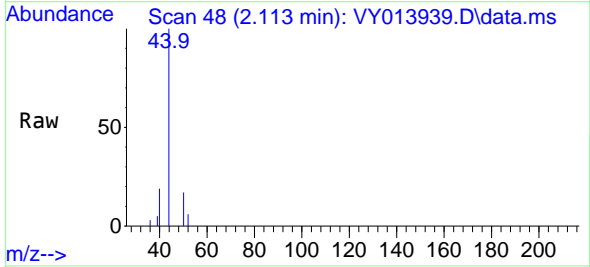


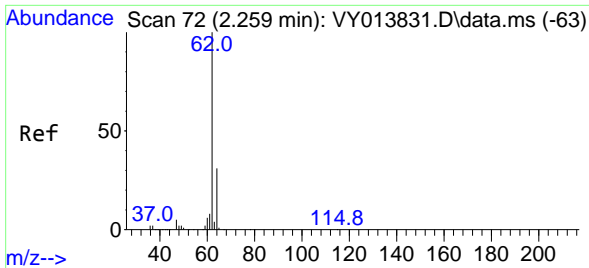
Tgt Ion:168 Resp: 5021
 Ion Ratio Lower Upper
 168 100
 99 45.8 43.4 65.2



#3
 Chloromethane
 Concen: 7.799 ug/l
 RT: 2.113 min Scan# 48
 Delta R.T. -0.006 min
 Lab File: VY013939.D
 Acq: 31 May 2023 16:35

Tgt Ion: 50 Resp: 437
 Ion Ratio Lower Upper
 50 100
 52 35.6 25.7 38.5

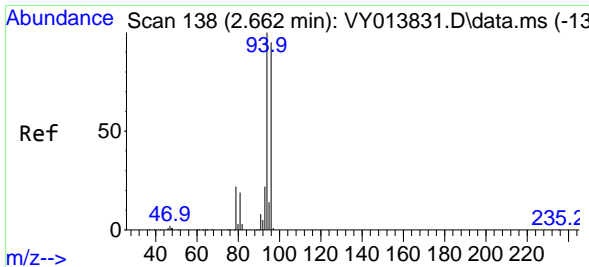
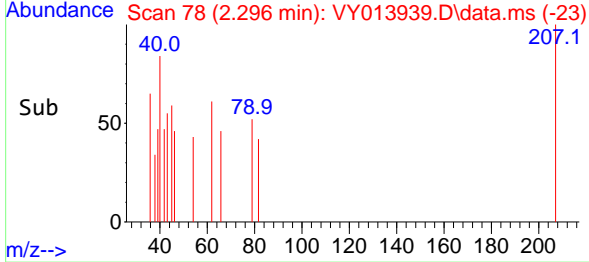
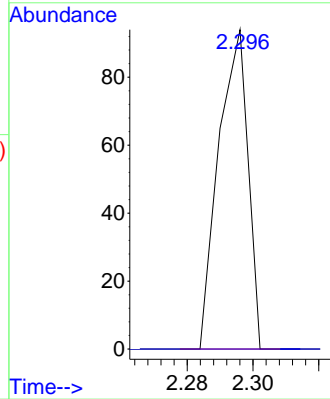
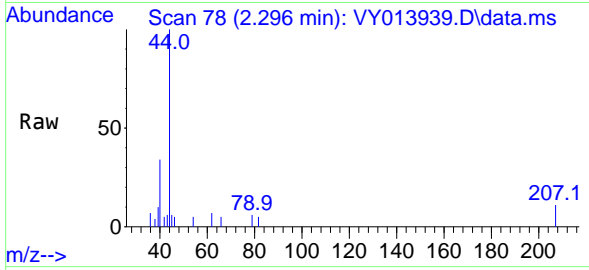




#4
 Vinyl Chloride
 Concen: 1.012 ug/l
 RT: 2.296 min Scan# 71
 Delta R.T. 0.037 min
 Lab File: VY013939.D
 Acq: 31 May 2023 16:35

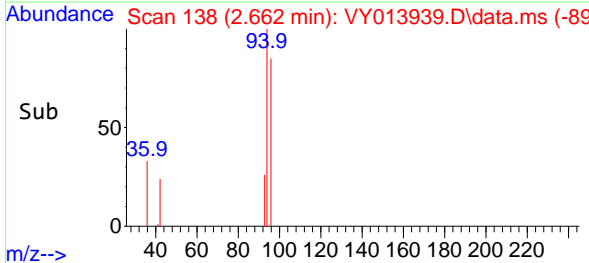
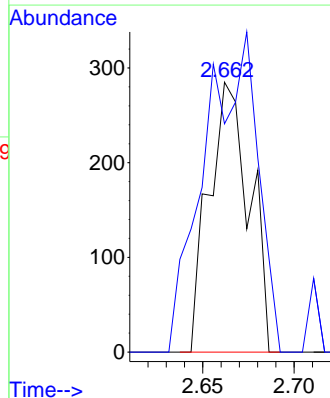
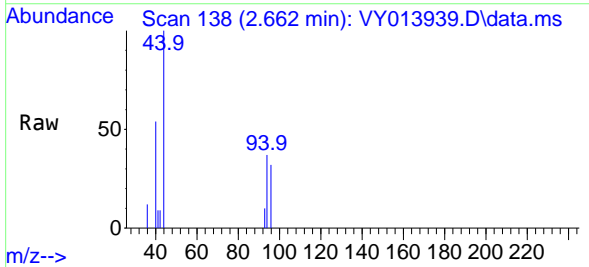
Instrument : MSVOA_Y
 ClientSampleId : SB21RE

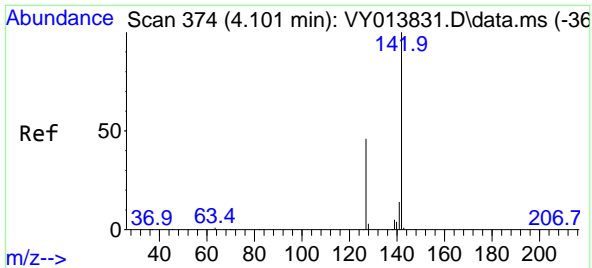
Tgt Ion: 62 Resp: 58
 Ion Ratio Lower Upper
 62 100
 64 0.0 24.8 37.2#



#5
 Bromomethane
 Concen: 9.663 ug/l
 RT: 2.662 min Scan# 138
 Delta R.T. 0.000 min
 Lab File: VY013939.D
 Acq: 31 May 2023 16:35

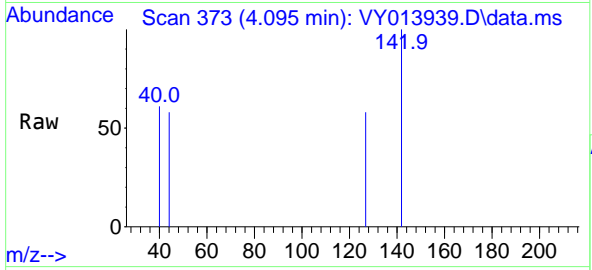
Tgt Ion: 94 Resp: 440
 Ion Ratio Lower Upper
 94 100
 96 84.6 76.2 114.2



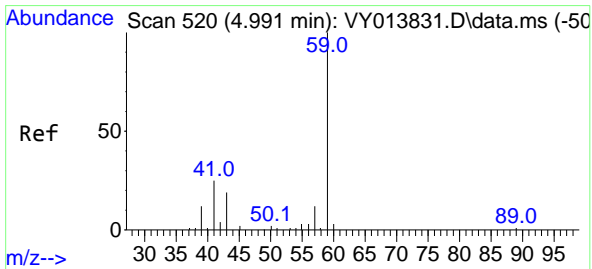
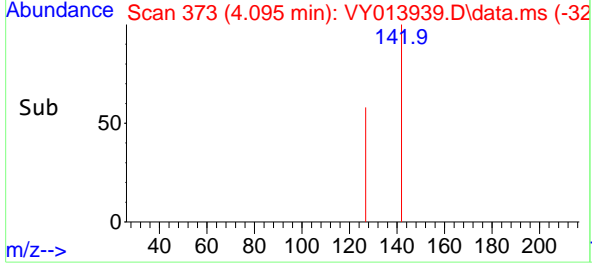
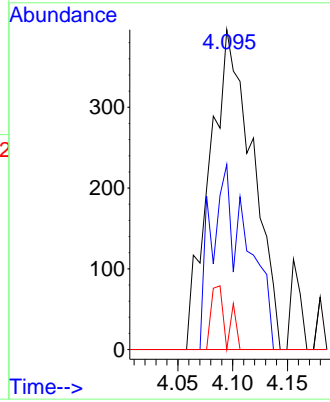


#10
Methyl Iodide
Concen: 17.369 ug/l
RT: 4.095 min Scan# 31
Delta R.T. -0.006 min
Lab File: VY013939.D
Acq: 31 May 2023 16:35

Instrument : MSVOA_Y
ClientSampleId : SB21RE

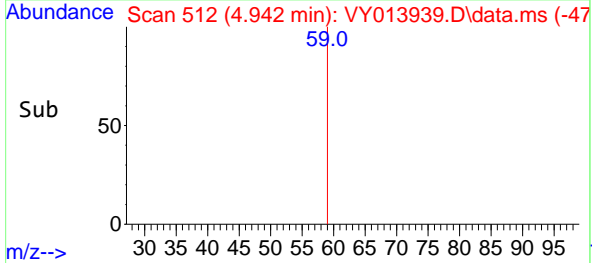
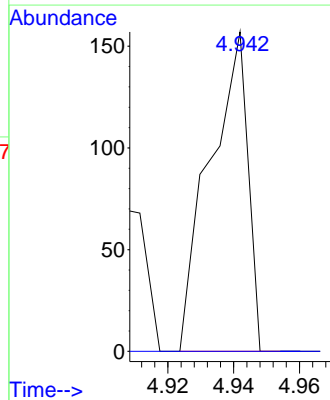
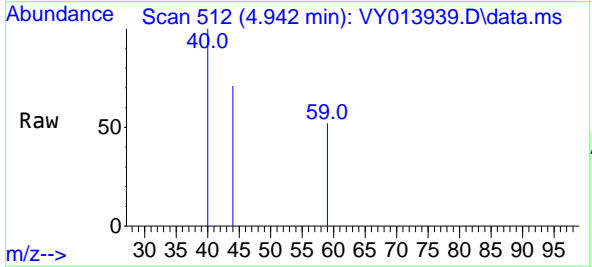


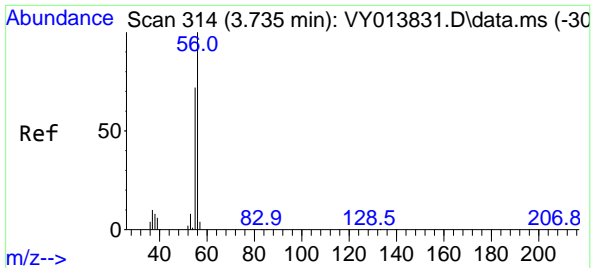
Tgt Ion:142 Resp: 1078
Ion Ratio Lower Upper
142 100
127 48.8 37.0 55.4
141 7.2 11.8 17.6#



#11
Tert butyl alcohol
Concen: 28.315 ug/l
RT: 4.942 min Scan# 512
Delta R.T. -0.049 min
Lab File: VY013939.D
Acq: 31 May 2023 16:35

Tgt Ion: 59 Resp: 126
Ion Ratio Lower Upper
59 100
57 0.0 8.1 12.1#

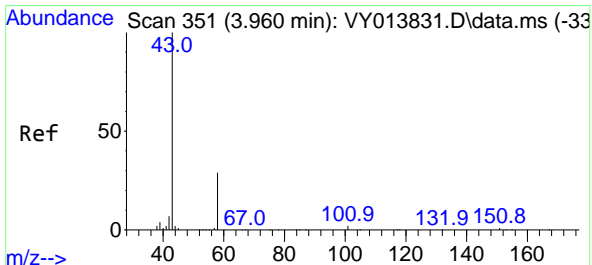
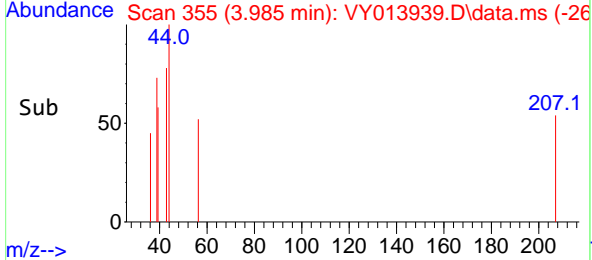
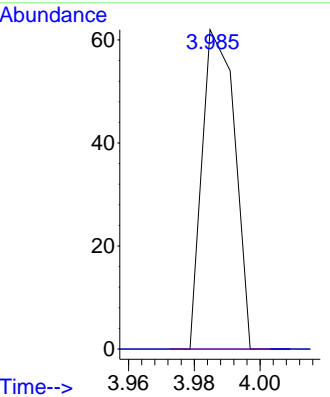
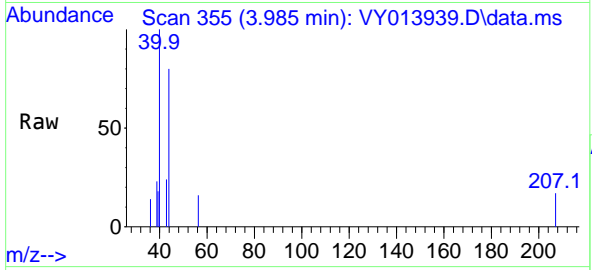




#13
 Acrolein
 Concen: 6.275 ug/l
 RT: 3.985 min Scan# 314
 Delta R.T. 0.250 min
 Lab File: VY013939.D
 Acq: 31 May 2023 16:35

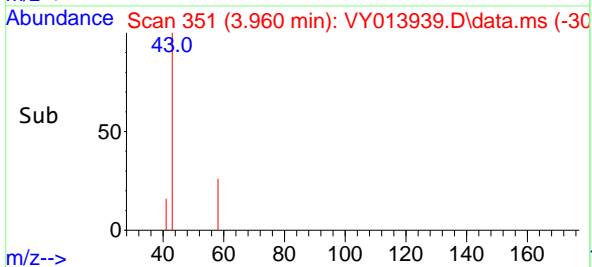
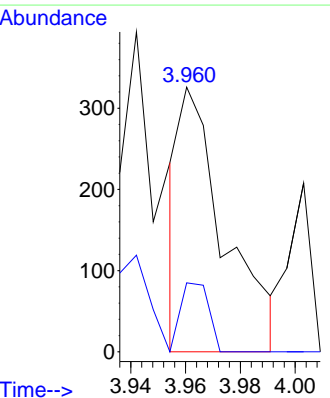
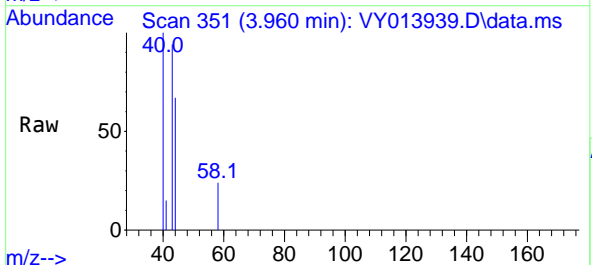
Instrument : MSVOA_Y
 ClientSampleId : SB21RE

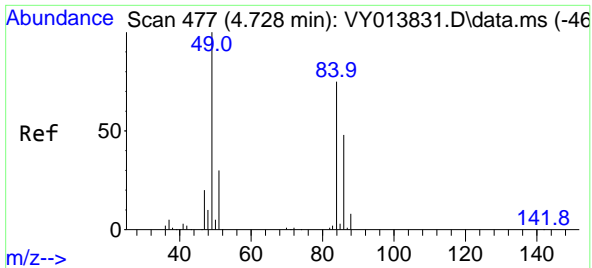
Tgt Ion: 56 Resp: 42
 Ion Ratio Lower Upper
 56 100
 55 0.0 56.2 84.2#



#16
 Acetone
 Concen: 21.461 ug/l
 RT: 3.960 min Scan# 351
 Delta R.T. 0.000 min
 Lab File: VY013939.D
 Acq: 31 May 2023 16:35

Tgt Ion: 43 Resp: 370
 Ion Ratio Lower Upper
 43 100
 58 33.1 23.3 34.9



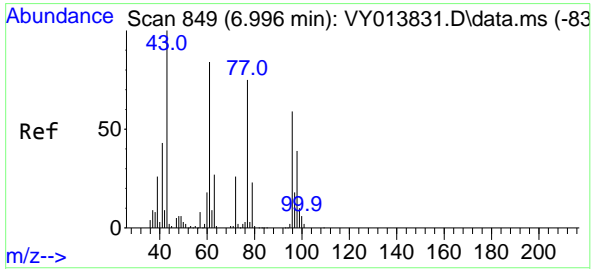
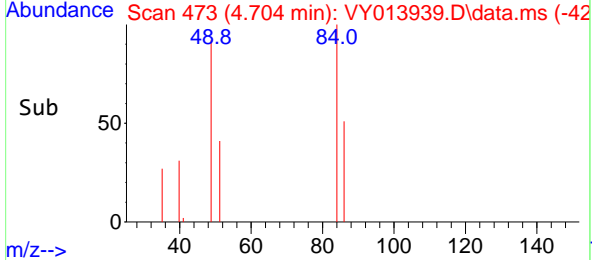
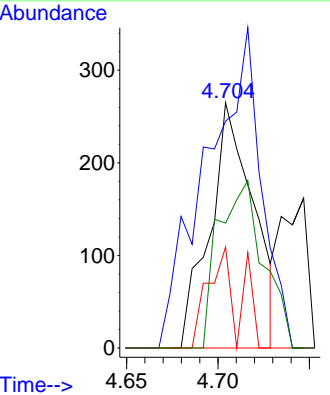
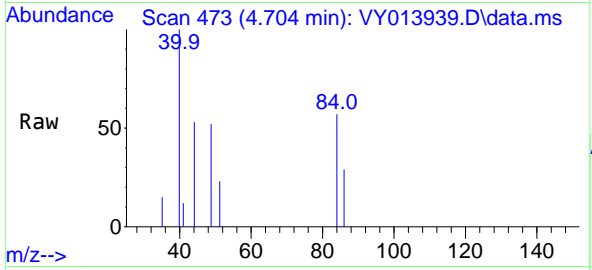


#20
 Methylene Chloride
 Concen: 4.924 ug/l
 RT: 4.704 min Scan# 41
 Delta R.T. -0.024 min
 Lab File: VY013939.D
 Acq: 31 May 2023 16:35

Instrument : MSVOA_Y
 ClientSampleId : SB21RE

Tgt Ion: 84 Resp: 441

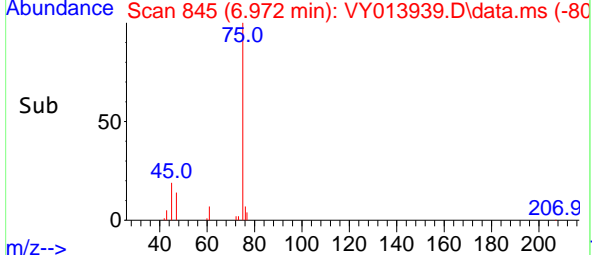
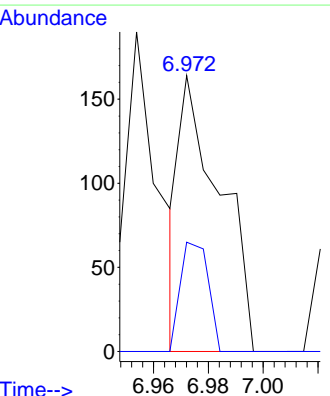
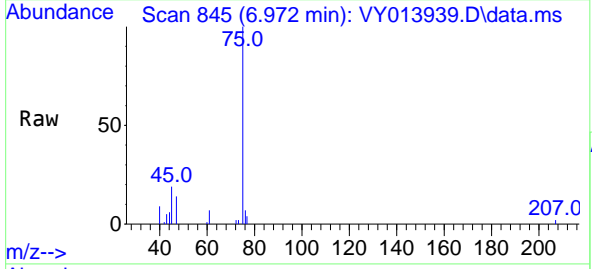
Ion	Ratio	Lower	Upper
84	100		
49	70.6	106.2	159.2#
51	41.1	31.4	47.0
86	50.9	50.6	75.8

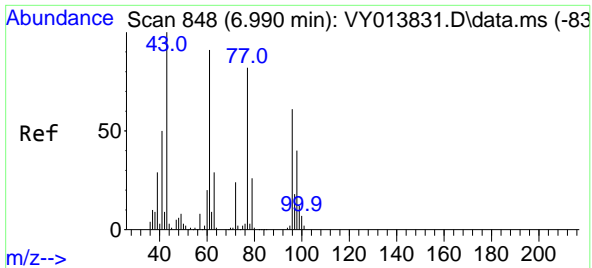


#25
 2-Butanone
 Concen: 7.986 ug/l
 RT: 6.972 min Scan# 845
 Delta R.T. -0.024 min
 Lab File: VY013939.D
 Acq: 31 May 2023 16:35

Tgt Ion: 43 Resp: 168

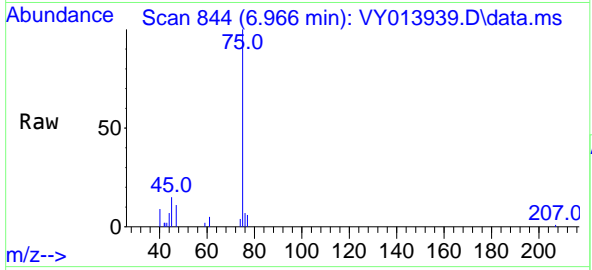
Ion	Ratio	Lower	Upper
43	100		
72	39.6	20.5	30.7#



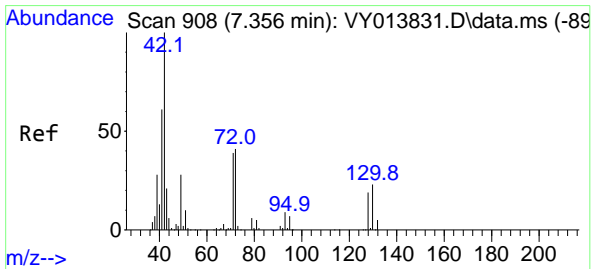
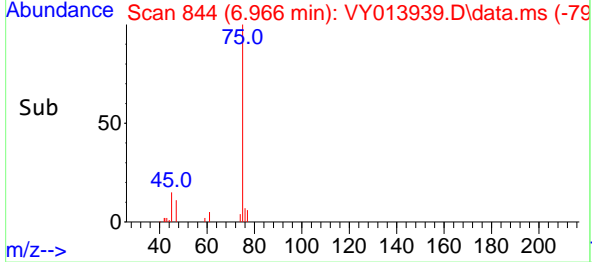
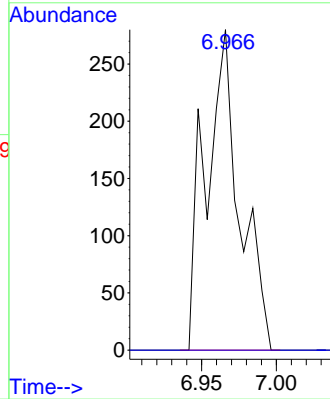


#26
 2,2-Dichloropropane
 Concen: 4.855 ug/l
 RT: 6.966 min Scan# 84
 Delta R.T. -0.024 min
 Lab File: VY013939.D
 Acq: 31 May 2023 16:35

Instrument :
 MSVOA_Y
 ClientSampleId :
 SB21RE

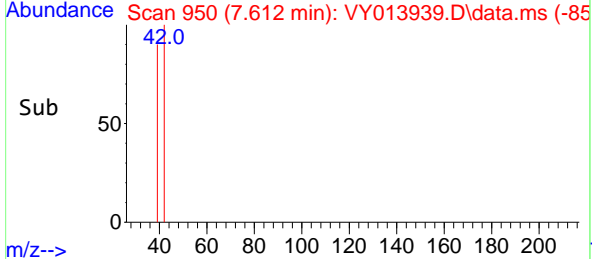
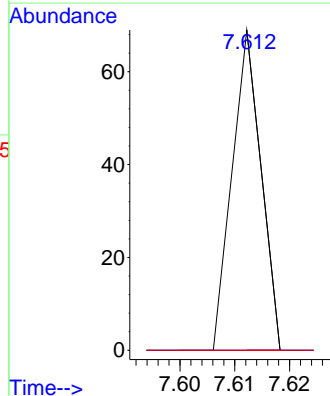
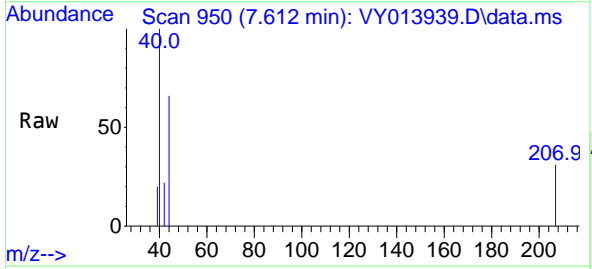


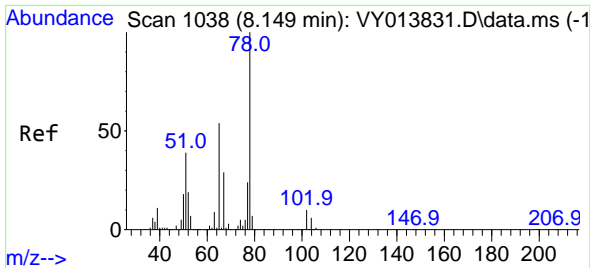
Tgt Ion: 77 Resp: 442
 Ion Ratio Lower Upper
 77 100
 97 0.0 11.2 33.6#



#29
 Tetrahydrofuran
 Concen: 1.990 ug/l
 RT: 7.612 min Scan# 950
 Delta R.T. 0.256 min
 Lab File: VY013939.D
 Acq: 31 May 2023 16:35

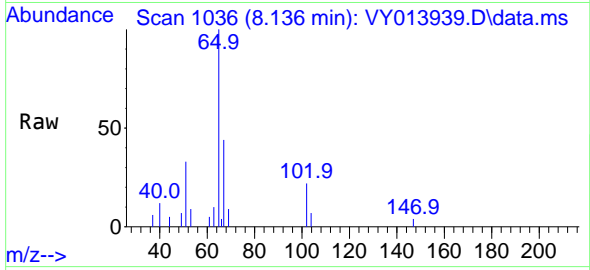
Tgt Ion: 42 Resp: 25
 Ion Ratio Lower Upper
 42 100
 72 0.0 31.7 47.5#
 71 0.0 30.6 45.8#



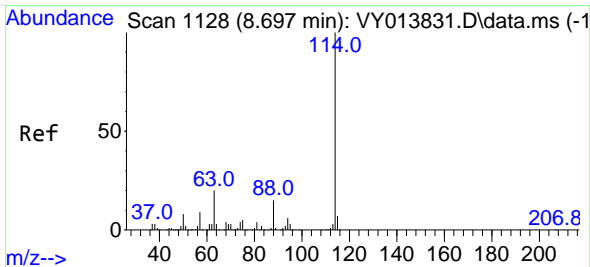
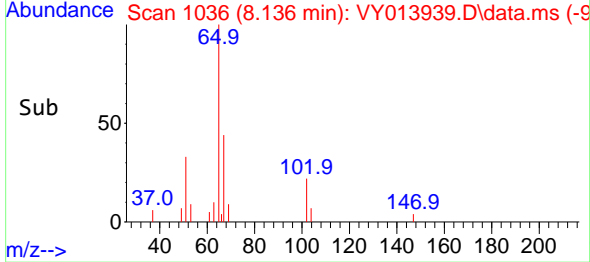
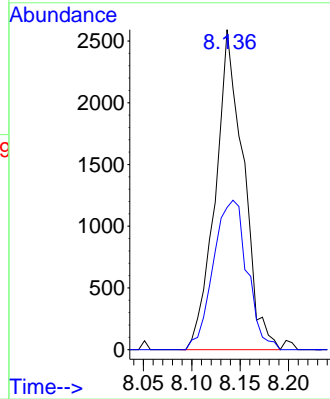


#33
 1,2-Dichloroethane-d4
 Concen: 90.191 ug/l
 RT: 8.136 min Scan# 1036
 Delta R.T. -0.012 min
 Lab File: VY013939.D
 Acq: 31 May 2023 16:35

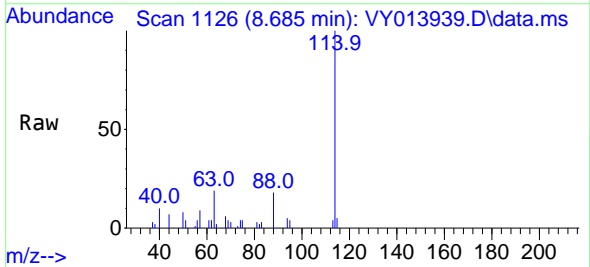
Instrument : MSVOA_Y
 ClientSampleId : SB21RE



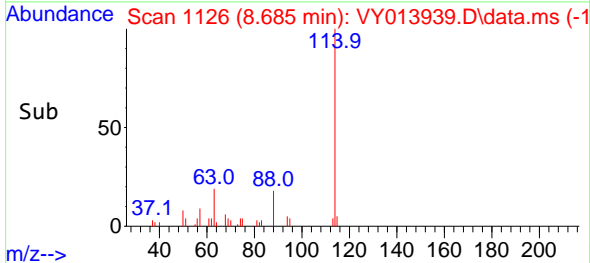
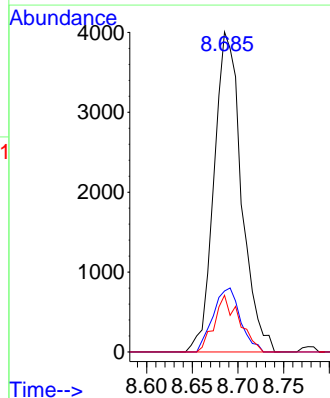
Tgt Ion: 65 Resp: 5239
 Ion Ratio Lower Upper
 65 100
 67 56.3 0.0 104.4

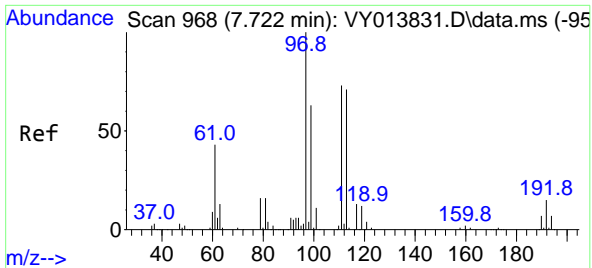


#34
 1,4-Difluorobenzene
 Concen: 50.000 ug/l
 RT: 8.685 min Scan# 1126
 Delta R.T. -0.012 min
 Lab File: VY013939.D
 Acq: 31 May 2023 16:35



Tgt Ion: 114 Resp: 8360
 Ion Ratio Lower Upper
 114 100
 63 19.0 0.0 40.2
 88 17.7 0.0 30.0



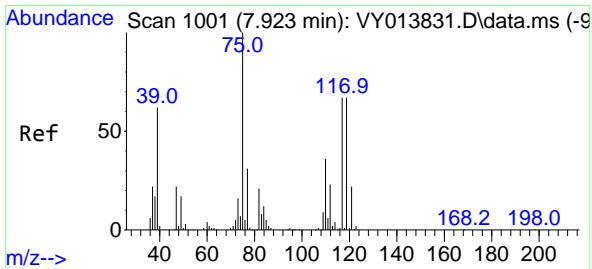
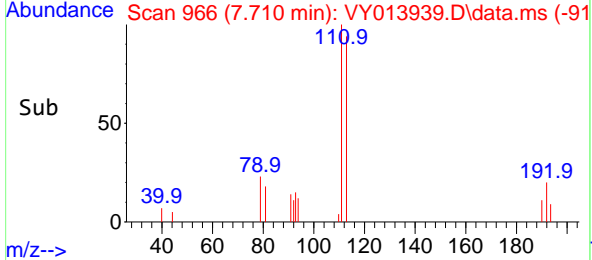
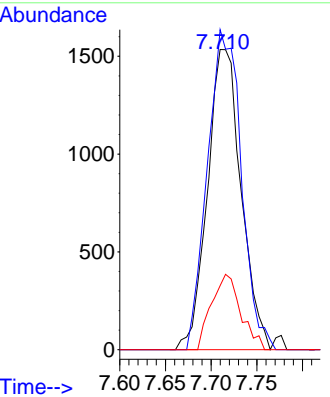
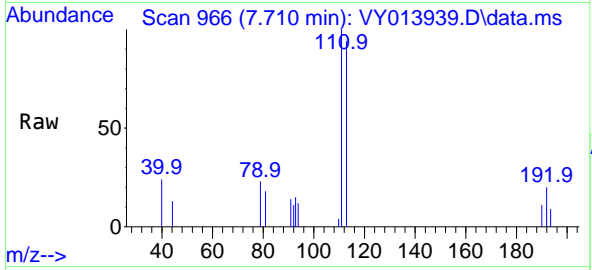


#35
 Dibromofluoromethane
 Concen: 72.755 ug/l
 RT: 7.710 min Scan# 910
 Delta R.T. -0.012 min
 Lab File: VY013939.D
 Acq: 31 May 2023 16:35

Instrument : MSVOA_Y
 ClientSampleId : SB21RE

Tgt Ion:113 Resp: 3928

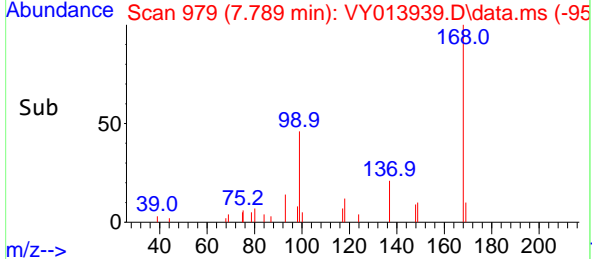
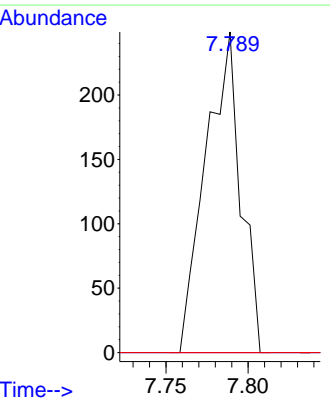
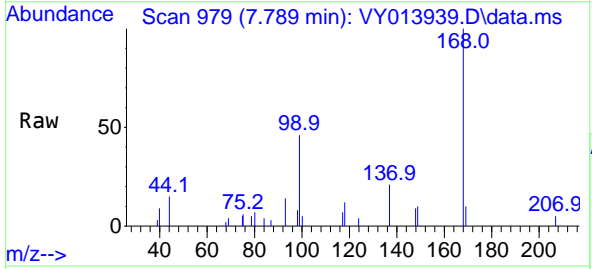
Ion	Ratio	Lower	Upper
113	100		
111	107.4	80.4	120.6
192	21.9	16.6	25.0

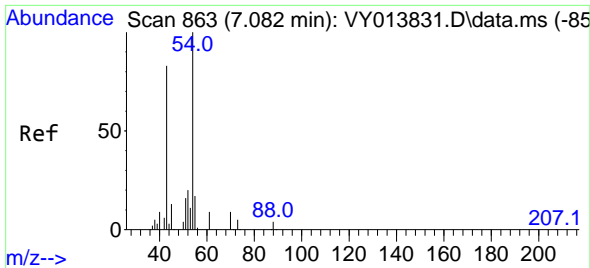


#36
 1,1-Dichloropropene
 Concen: 4.475 ug/l
 RT: 7.789 min Scan# 979
 Delta R.T. -0.134 min
 Lab File: VY013939.D
 Acq: 31 May 2023 16:35

Tgt Ion: 75 Resp: 368

Ion	Ratio	Lower	Upper
75	100		
110	0.0	17.5	52.6#
77	0.0	24.4	36.6#



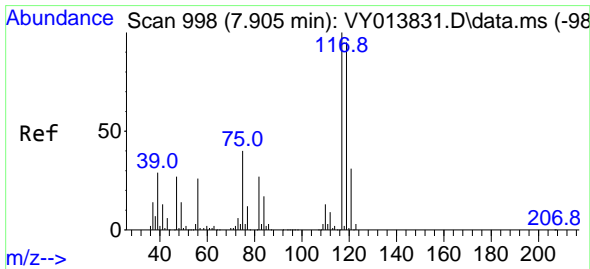
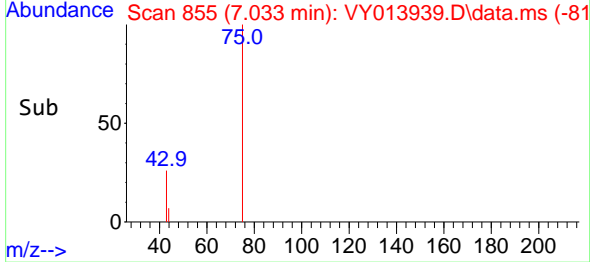
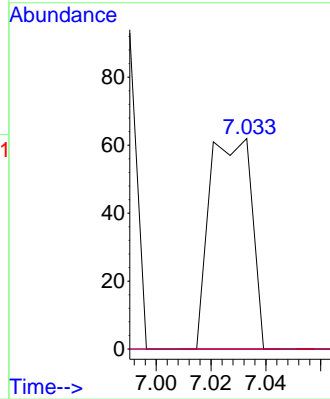
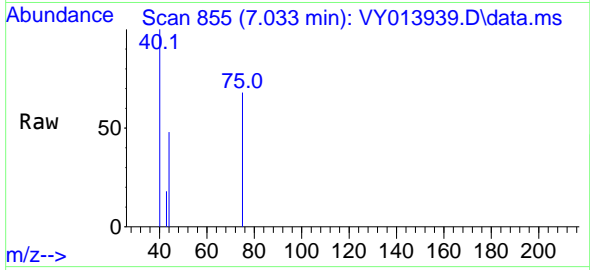


#37
 Ethyl Acetate
 Concen: 1.316 ug/l
 RT: 7.033 min Scan# 81
 Delta R.T. -0.049 min
 Lab File: VY013939.D
 Acq: 31 May 2023 16:35

Instrument : MSVOA_Y
 ClientSampleId : SB21RE

Tgt Ion: 43 Resp: 66

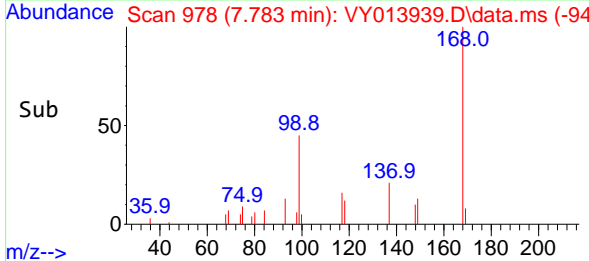
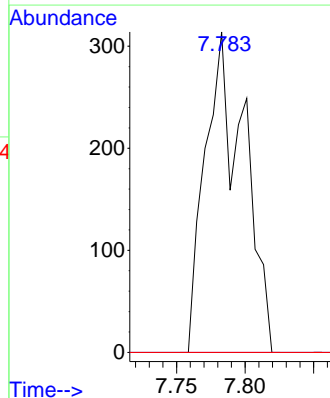
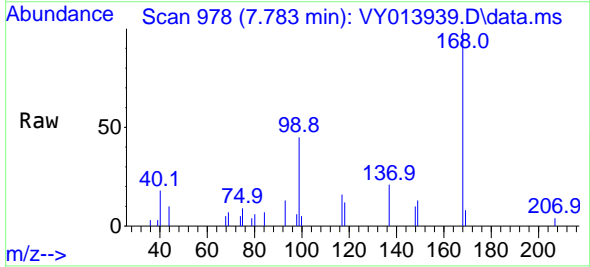
Ion	Ratio	Lower	Upper
43	100		
61	0.0	10.5	15.7#
70	0.0	6.9	10.3#

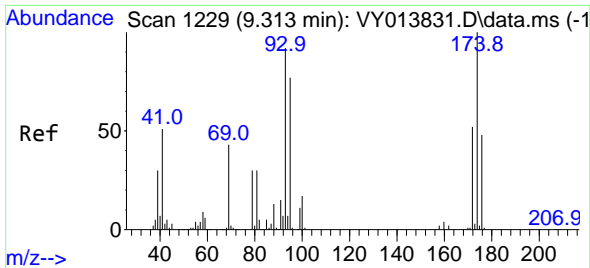


#38
 Carbon Tetrachloride
 Concen: 6.619 ug/l
 RT: 7.783 min Scan# 978
 Delta R.T. -0.122 min
 Lab File: VY013939.D
 Acq: 31 May 2023 16:35

Tgt Ion: 117 Resp: 619

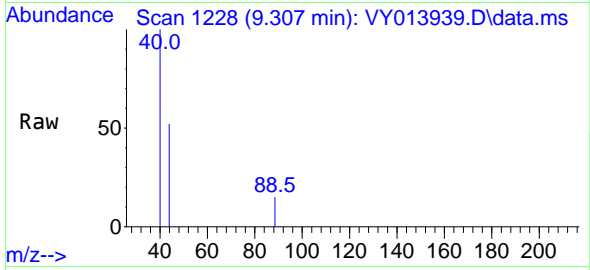
Ion	Ratio	Lower	Upper
117	100		
119	0.0	75.6	113.4#
121	0.0	24.8	37.2#



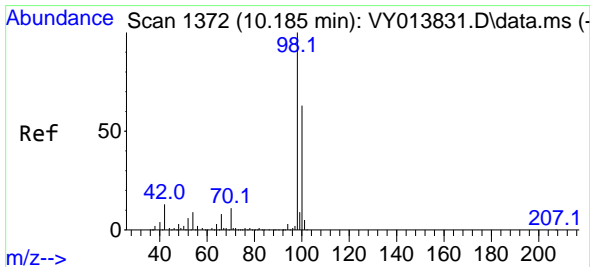
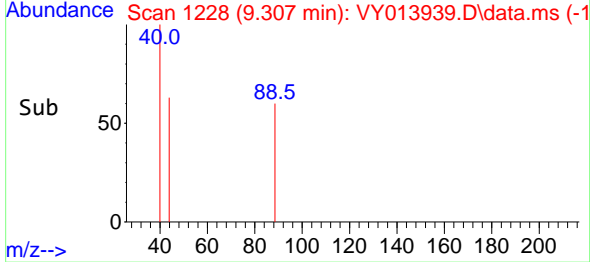
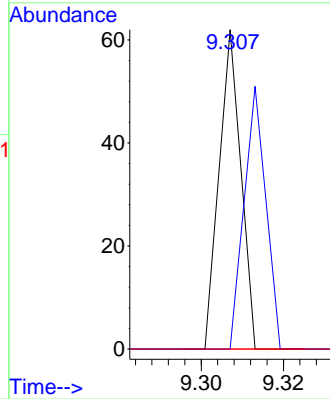


#49
 1,4-Dioxane
 Concen: 56.477 ug/l
 RT: 9.307 min Scan# 11
 Delta R.T. -0.006 min
 Lab File: VY013939.D
 Acq: 31 May 2023 16:35

Instrument :
 MSVOA_Y
 ClientSampleId :
 SB21RE

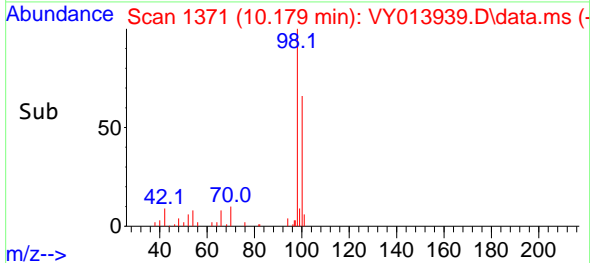
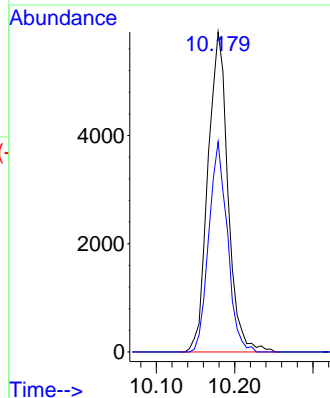
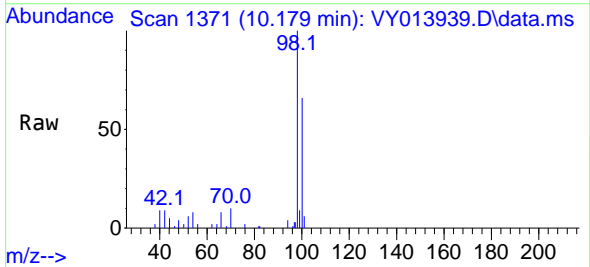


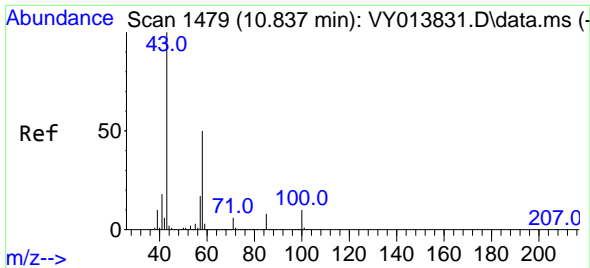
Tgt Ion: 88 Resp: 23
 Ion Ratio Lower Upper
 88 100
 43 82.6 0.0 0.0#
 58 0.0 59.0 88.6#



#50
 Toluene-d8
 Concen: 50.995 ug/l
 RT: 10.179 min Scan# 1371
 Delta R.T. -0.006 min
 Lab File: VY013939.D
 Acq: 31 May 2023 16:35

Tgt Ion: 98 Resp: 10464
 Ion Ratio Lower Upper
 98 100
 100 61.1 50.8 76.2

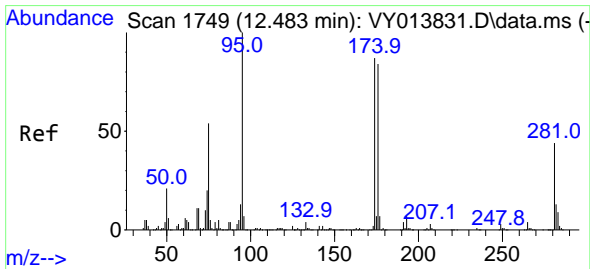
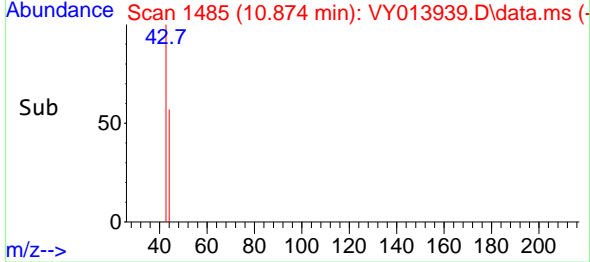
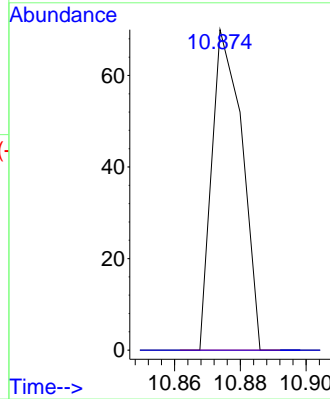
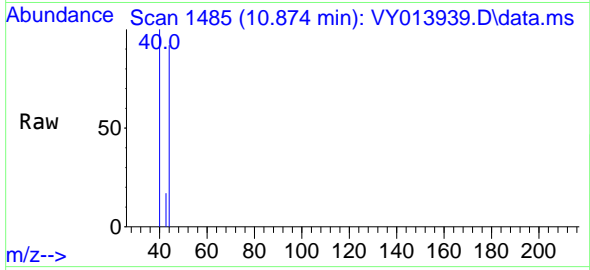




#59
 2-Hexanone
 Concen: 1.299 ug/l
 RT: 10.874 min Scan# 1479
 Delta R.T. 0.037 min
 Lab File: VY013939.D
 Acq: 31 May 2023 16:35

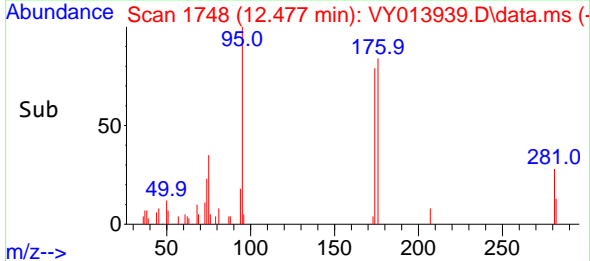
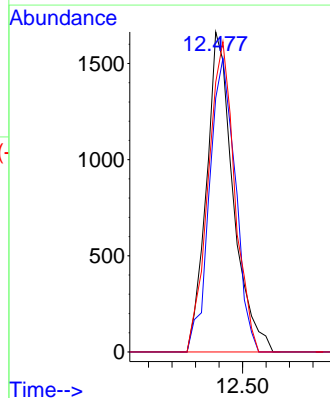
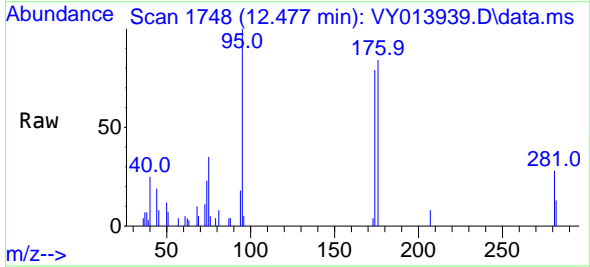
Instrument : MSVOA_Y
 ClientSampleId : SB21RE

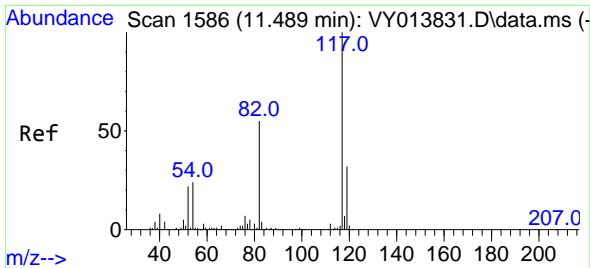
Tgt Ion: 43 Resp: 45
 Ion Ratio Lower Upper
 43 100
 58 0.0 24.8 74.3#



#62
 4-Bromofluorobenzene
 Concen: 38.559 ug/l
 RT: 12.477 min Scan# 1748
 Delta R.T. -0.006 min
 Lab File: VY013939.D
 Acq: 31 May 2023 16:35

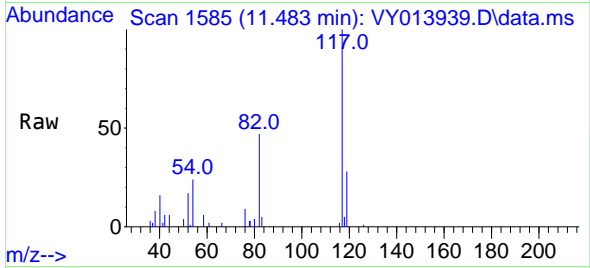
Tgt Ion: 95 Resp: 2630
 Ion Ratio Lower Upper
 95 100
 174 88.8 0.0 176.0
 176 96.3 0.0 170.2





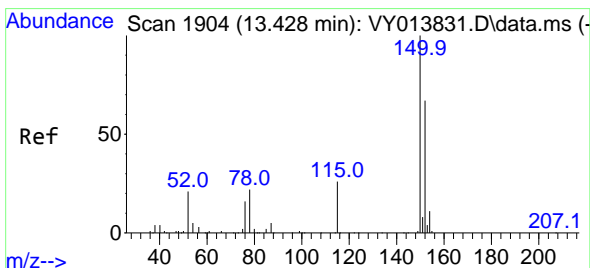
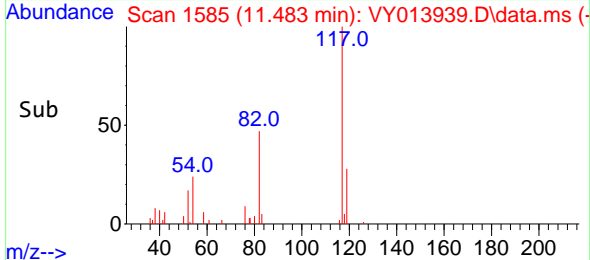
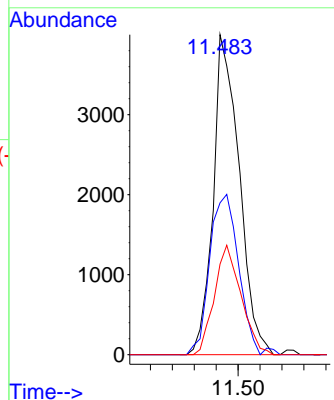
#63
 Chlorobenzene-d5
 Concen: 50.000 ug/l
 RT: 11.483 min Scan# 11
 Delta R.T. -0.006 min
 Lab File: VY013939.D
 Acq: 31 May 2023 16:35

Instrument : MSVOA_Y
 ClientSampleId : SB21RE

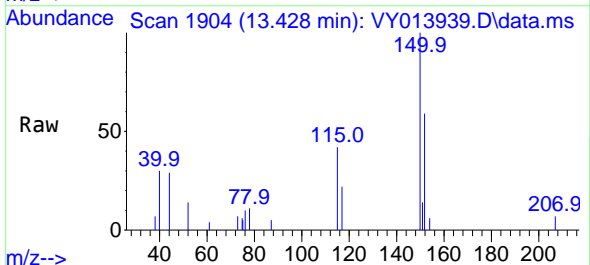


Tgt Ion:117 Resp: 6592

Ion	Ratio	Lower	Upper
117	100		
82	47.4	44.2	66.4
119	28.3	25.7	38.5

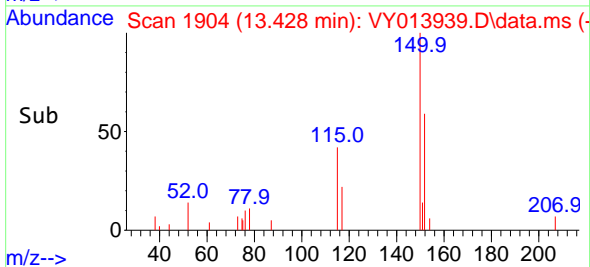
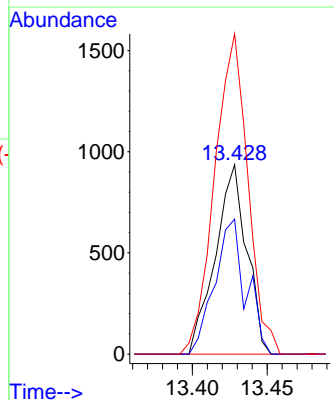


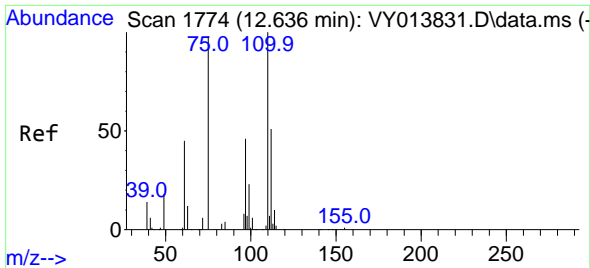
#72
 1,4-Dichlorobenzene-d4
 Concen: 50.000 ug/l
 RT: 13.428 min Scan# 1904
 Delta R.T. 0.000 min
 Lab File: VY013939.D
 Acq: 31 May 2023 16:35



Tgt Ion:152 Resp: 1369

Ion	Ratio	Lower	Upper
152	100		
115	70.9	28.8	86.5
150	178.2	0.0	353.4

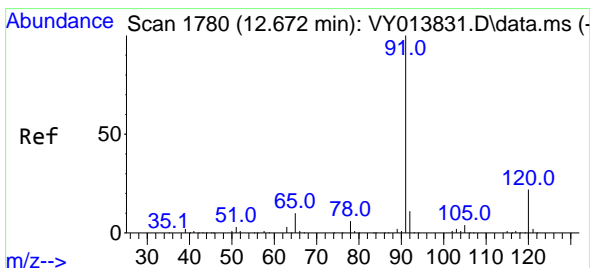
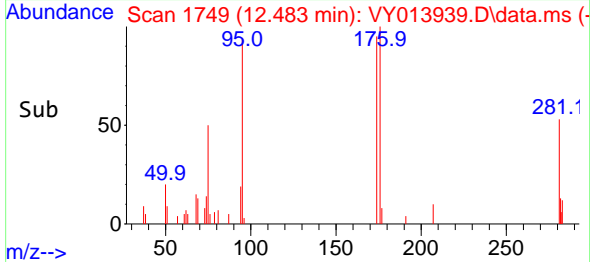
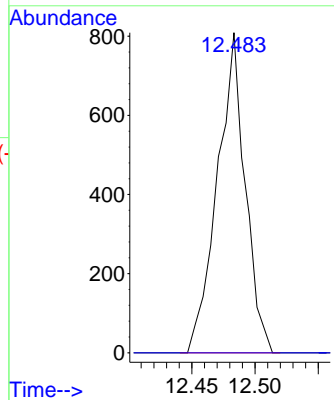
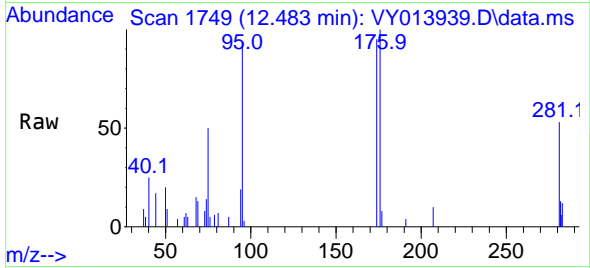




#76
 1,2,3-Trichloropropane
 Concen: 76.693 ug/l
 RT: 12.483 min Scan# 1774
 Delta R.T. -0.152 min
 Lab File: VY013939.D
 Acq: 31 May 2023 16:35

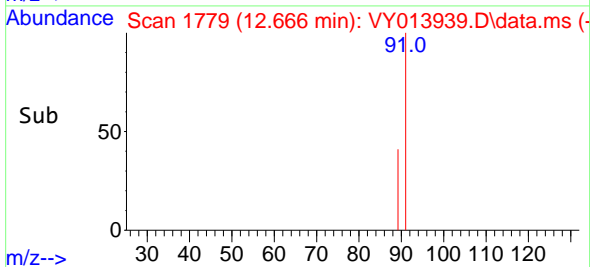
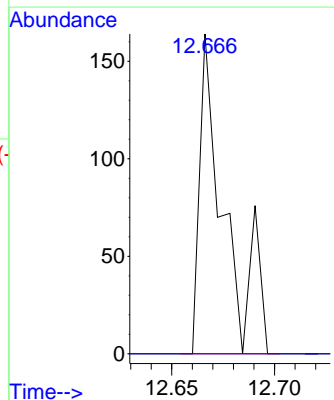
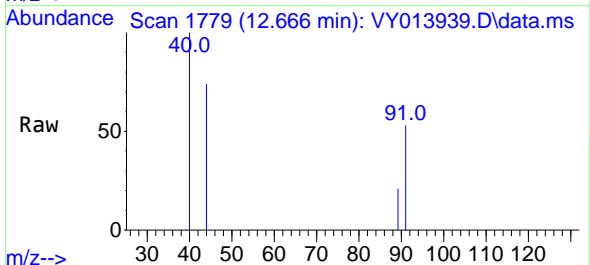
Instrument : MSVOA_Y
 ClientSampleId : SB21RE

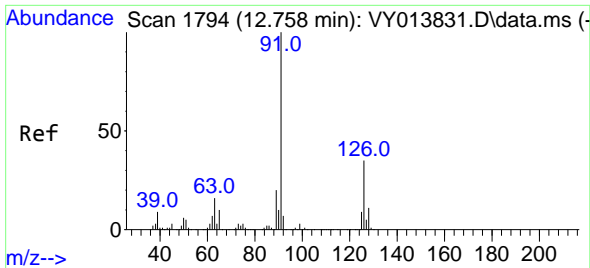
Tgt Ion: 75 Resp: 1238
 Ion Ratio Lower Upper
 75 100
 77 0.0 0.0 0.0



#78
 n-propylbenzene
 Concen: 1.112 ug/l
 RT: 12.666 min Scan# 1779
 Delta R.T. -0.006 min
 Lab File: VY013939.D
 Acq: 31 May 2023 16:35

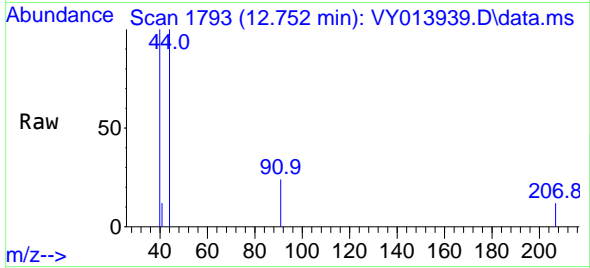
Tgt Ion: 91 Resp: 140
 Ion Ratio Lower Upper
 91 100
 120 0.0 11.3 33.9#



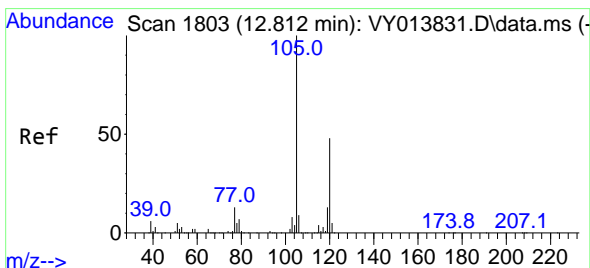
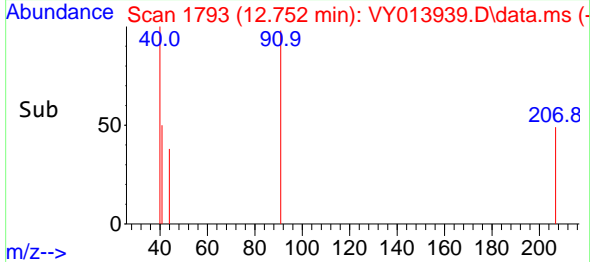
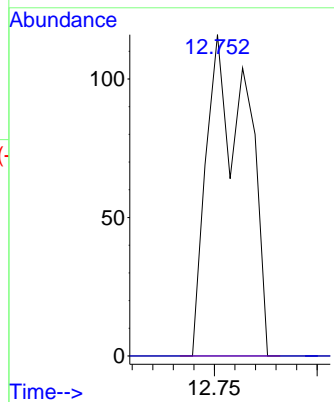


#79
 2-Chlorotoluene
 Concen: 2.247 ug/l
 RT: 12.752 min Scan# 11
 Delta R.T. -0.006 min
 Lab File: VY013939.D
 Acq: 31 May 2023 16:35

Instrument : MSVOA_Y
 ClientSampleId : SB21RE

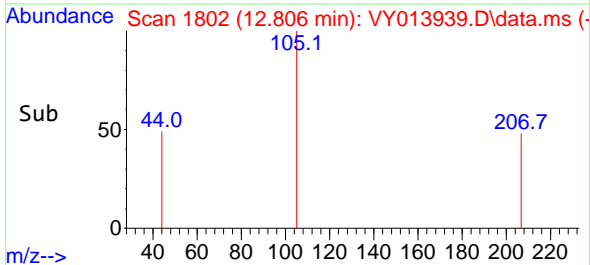
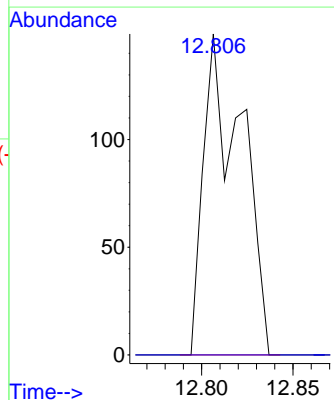
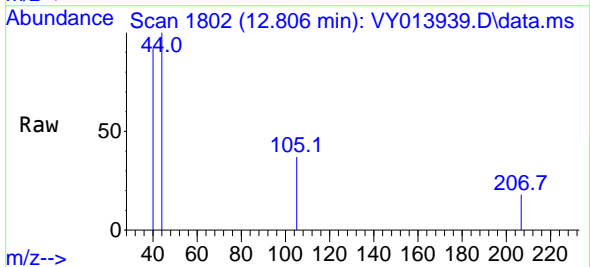


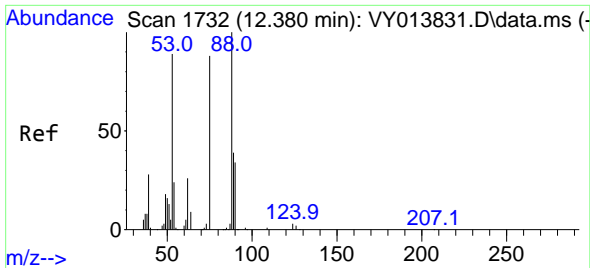
Tgt Ion: 91 Resp: 158
 Ion Ratio Lower Upper
 91 100
 126 0.0 17.8 53.4#



#80
 1,3,5-Trimethylbenzene
 Concen: 2.568 ug/l
 RT: 12.806 min Scan# 1802
 Delta R.T. -0.006 min
 Lab File: VY013939.D
 Acq: 31 May 2023 16:35

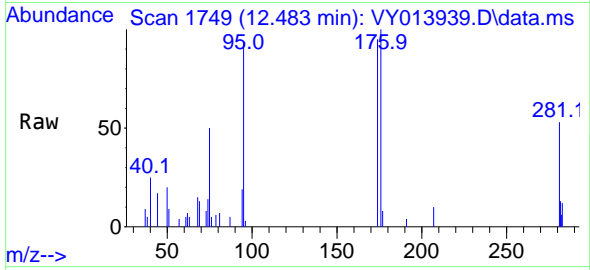
Tgt Ion: 105 Resp: 216
 Ion Ratio Lower Upper
 105 100
 120 0.0 23.9 71.7#



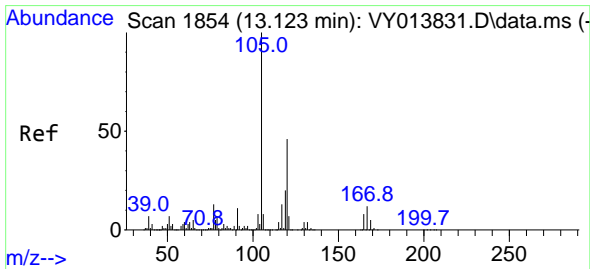
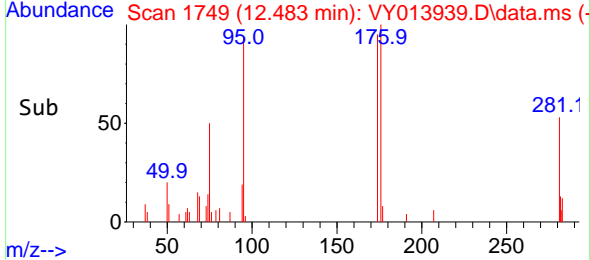
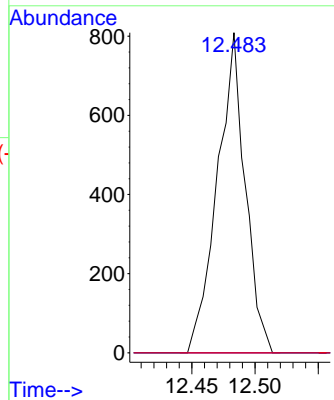


#81
 trans-1,4-Dichloro-2-butene
 Concen: 166.476 ug/l
 RT: 12.483 min Scan# 11
 Delta R.T. 0.104 min
 Lab File: VY013939.D
 Acq: 31 May 2023 16:35

Instrument :
 MSVOA_Y
 ClientSampleId :
 SB21RE

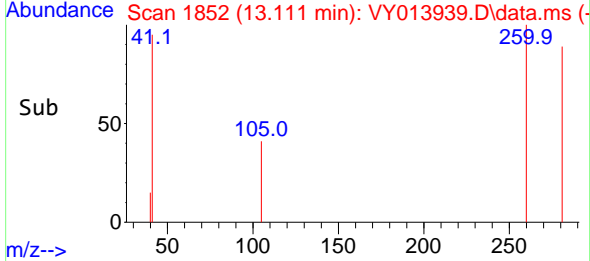
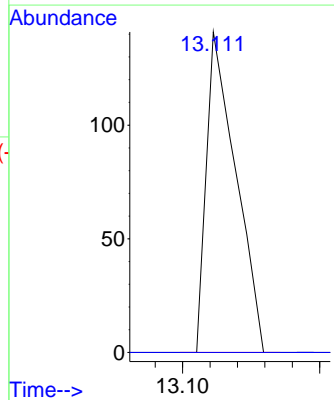
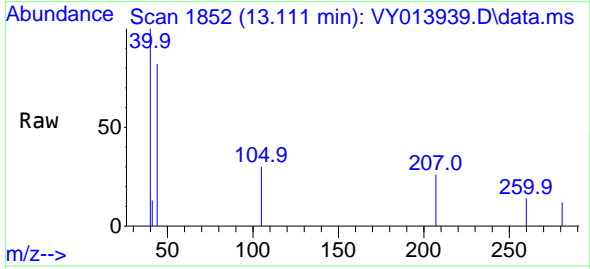


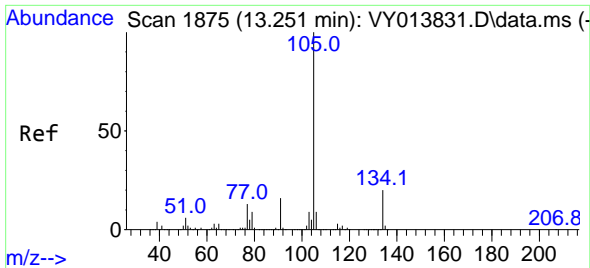
Tgt Ion: 75 Resp: 1238
 Ion Ratio Lower Upper
 75 100
 53 0.0 79.7 119.5#
 89 0.0 36.4 54.6#



#84
 1,2,4-Trimethylbenzene
 Concen: 1.272 ug/l
 RT: 13.111 min Scan# 1852
 Delta R.T. -0.012 min
 Lab File: VY013939.D
 Acq: 31 May 2023 16:35

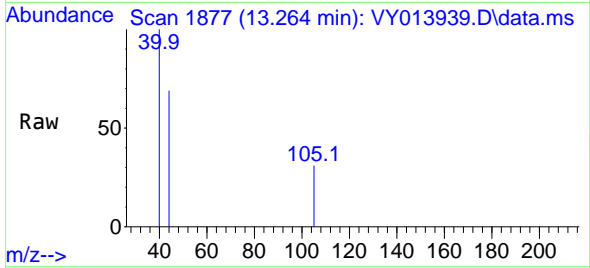
Tgt Ion: 105 Resp: 105
 Ion Ratio Lower Upper
 105 100
 120 0.0 22.4 67.3#



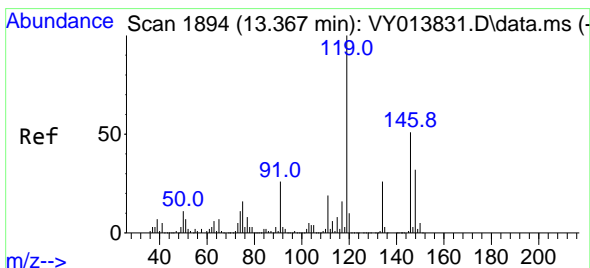
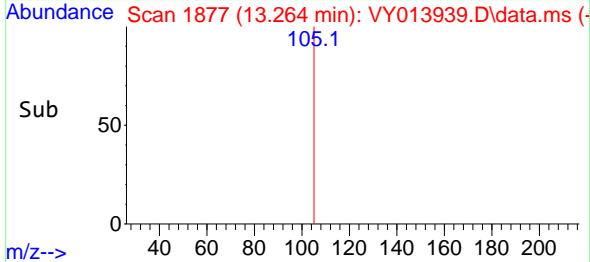
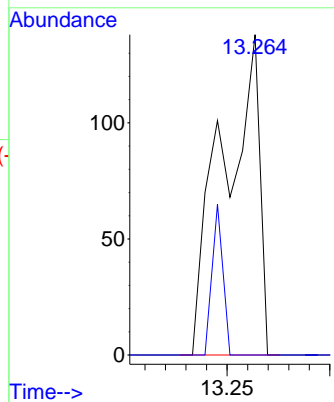


#85
 sec-Butylbenzene
 Concen: 1.562 ug/l
 RT: 13.264 min Scan# 1877
 Delta R.T. 0.012 min
 Lab File: VY013939.D
 Acq: 31 May 2023 16:35

Instrument : MSVOA_Y
 ClientSampleId : SB21RE

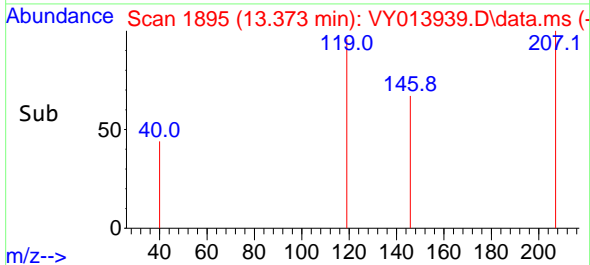
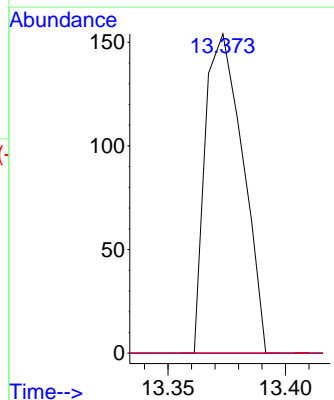
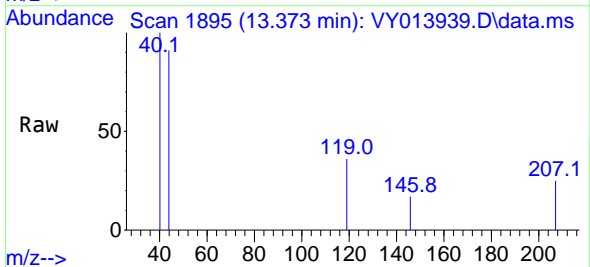


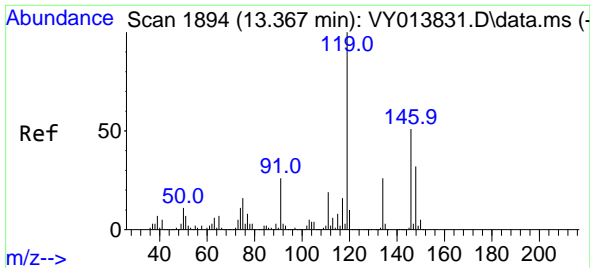
Tgt Ion:105 Resp: 170
 Ion Ratio Lower Upper
 105 100
 134 14.1 10.3 30.8



#86
 p-Isopropyltoluene
 Concen: 1.901 ug/l
 RT: 13.373 min Scan# 1895
 Delta R.T. 0.006 min
 Lab File: VY013939.D
 Acq: 31 May 2023 16:35

Tgt Ion:119 Resp: 171
 Ion Ratio Lower Upper
 119 100
 134 0.0 13.3 39.9#
 91 0.0 12.4 37.4#

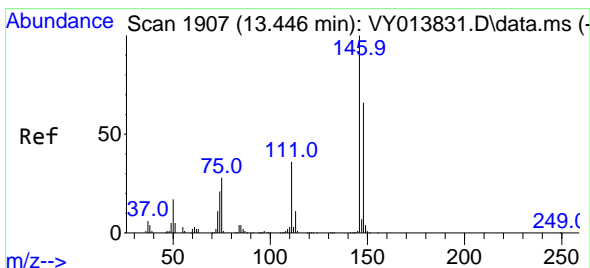
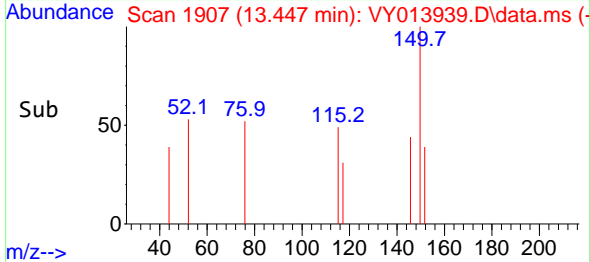
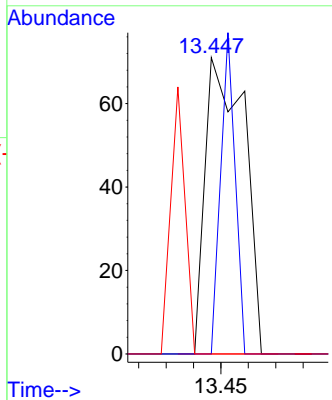
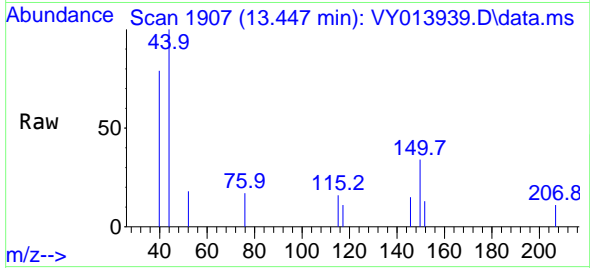




#87
 1,3-Dichlorobenzene
 Concen: 1.450 ug/l
 RT: 13.447 min Scan# 1907
 Delta R.T. 0.079 min
 Lab File: VY013939.D
 Acq: 31 May 2023 16:35

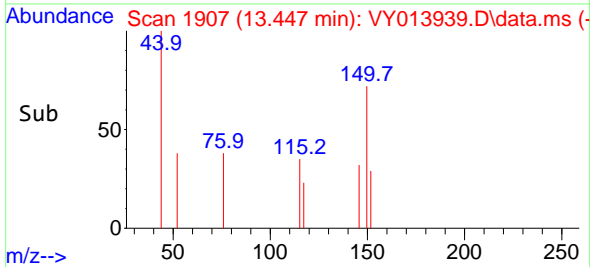
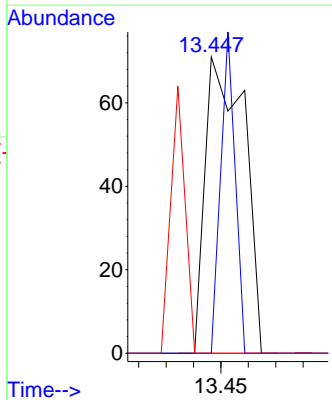
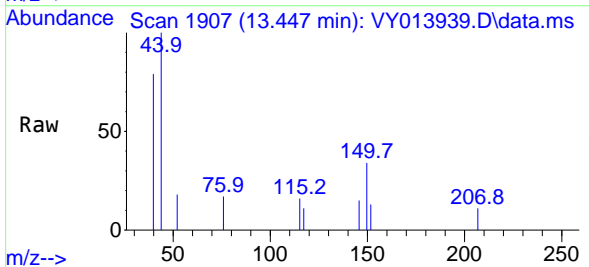
Instrument : MSVOA_Y
 ClientSampleId : SB21RE

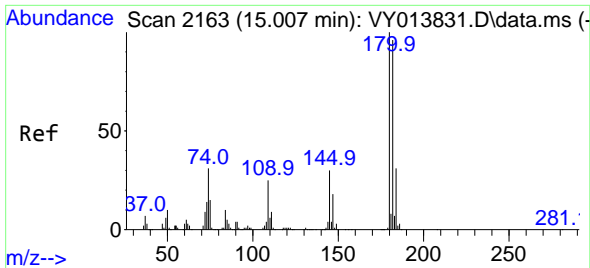
Tgt Ion	Ratio	Lower	Upper
146	100		
111	40.0	19.1	57.5
148	32.9	31.8	95.3



#88
 1,4-Dichlorobenzene
 Concen: 1.456 ug/l
 RT: 13.447 min Scan# 1907
 Delta R.T. 0.000 min
 Lab File: VY013939.D
 Acq: 31 May 2023 16:35

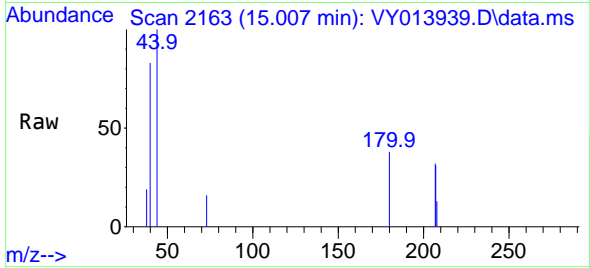
Tgt Ion	Ratio	Lower	Upper
146	100		
111	40.0	18.6	55.8
148	32.9	32.4	97.2



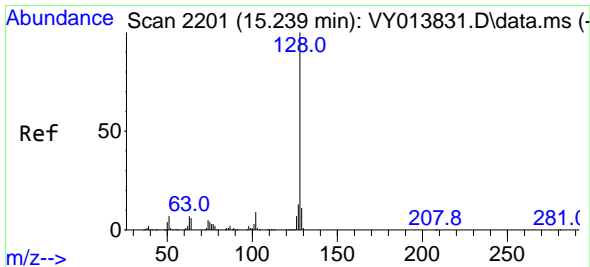
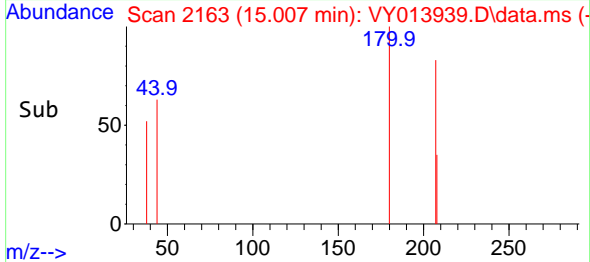
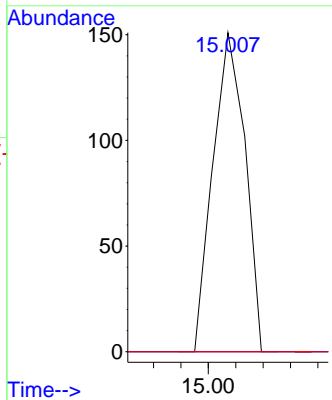


#93
 1,2,4-Trichlorobenzene
 Concen: 4.623 ug/l
 RT: 15.007 min Scan# 2163
 Delta R.T. 0.000 min
 Lab File: VY013939.D
 Acq: 31 May 2023 16:35

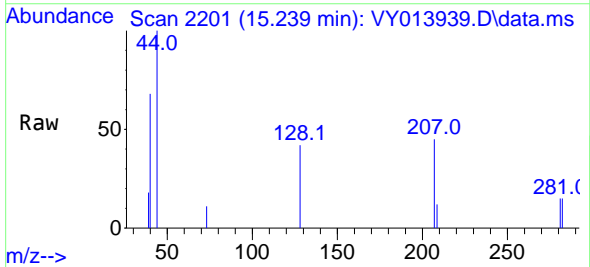
Instrument : MSVOA_Y
 ClientSampleId : SB21RE



Tgt Ion:180 Resp: 123
 Ion Ratio Lower Upper
 180 100
 182 0.0 48.1 144.3#
 145 0.0 14.8 44.4#



#95
 Naphthalene
 Concen: 10.165 ug/l
 RT: 15.239 min Scan# 2201
 Delta R.T. -0.000 min
 Lab File: VY013939.D
 Acq: 31 May 2023 16:35



Tgt Ion:128 Resp: 361
 Ion Ratio Lower Upper
 128 100
 127 0.0 10.7 16.1#
 129 0.0 9.0 13.4#

