

Data Path : Z:\VOASRV\HPCHEM1\MSVOA Y\DATA\VY060120\  
 Data File : VY002807.D  
 Acq On : 01 Jun 2020 14:03  
 Operator : SY/MD  
 Sample : L2814-01  
 Misc : 7.34G/5ML/MSVOA Y/SOIL  
 ALS Vial : 7 Sample Multiplier: 1

Instrument :  
 MSVOA\_Y  
 ClientSampleId :  
 PL-02-052920

Quant Time: Jun 01 18:26:05 2020  
 Quant Method : Z:\VOASRV\HPCHEM1\MSVOA\_Y\METHODS\82Y052720S.M  
 Quant Title : SW846 8260  
 QLast Update : Wed May 27 13:13:33 2020  
 Response via : Initial Calibration

Internal Standards	R.T.	QIon	Response	Conc	Units	Dev(Min)
1) Pentafluorobenzene	7.80	168	264025	50.00	ug/l	0.00
34) 1,4-Difluorobenzene	8.70	114	425226	50.00	ug/l	0.00
63) Chlorobenzene-d5	11.49	117	397948	50.00	ug/l	0.00
72) 1,4-Dichlorobenzene-d4	13.42	152	196061	50.00	ug/l	0.00

## System Monitoring Compounds

33) 1,2-Dichloroethane-d4	8.15	65	126368	55.12	ug/l	0.00
Spiked Amount				50.000		
			Recovery	=	110.24%	
35) Dibromofluoromethane	7.72	113	125776	50.47	ug/l	0.00
Spiked Amount				50.000		
			Recovery	=	100.94%	
50) Toluene-d8	10.18	98	508347	50.45	ug/l	0.00
Spiked Amount				50.000		
			Recovery	=	100.90%	
62) 4-Bromofluorobenzene	12.48	95	170824	49.61	ug/l	0.00
Spiked Amount				50.000		
			Recovery	=	99.22%	

## Target Compounds

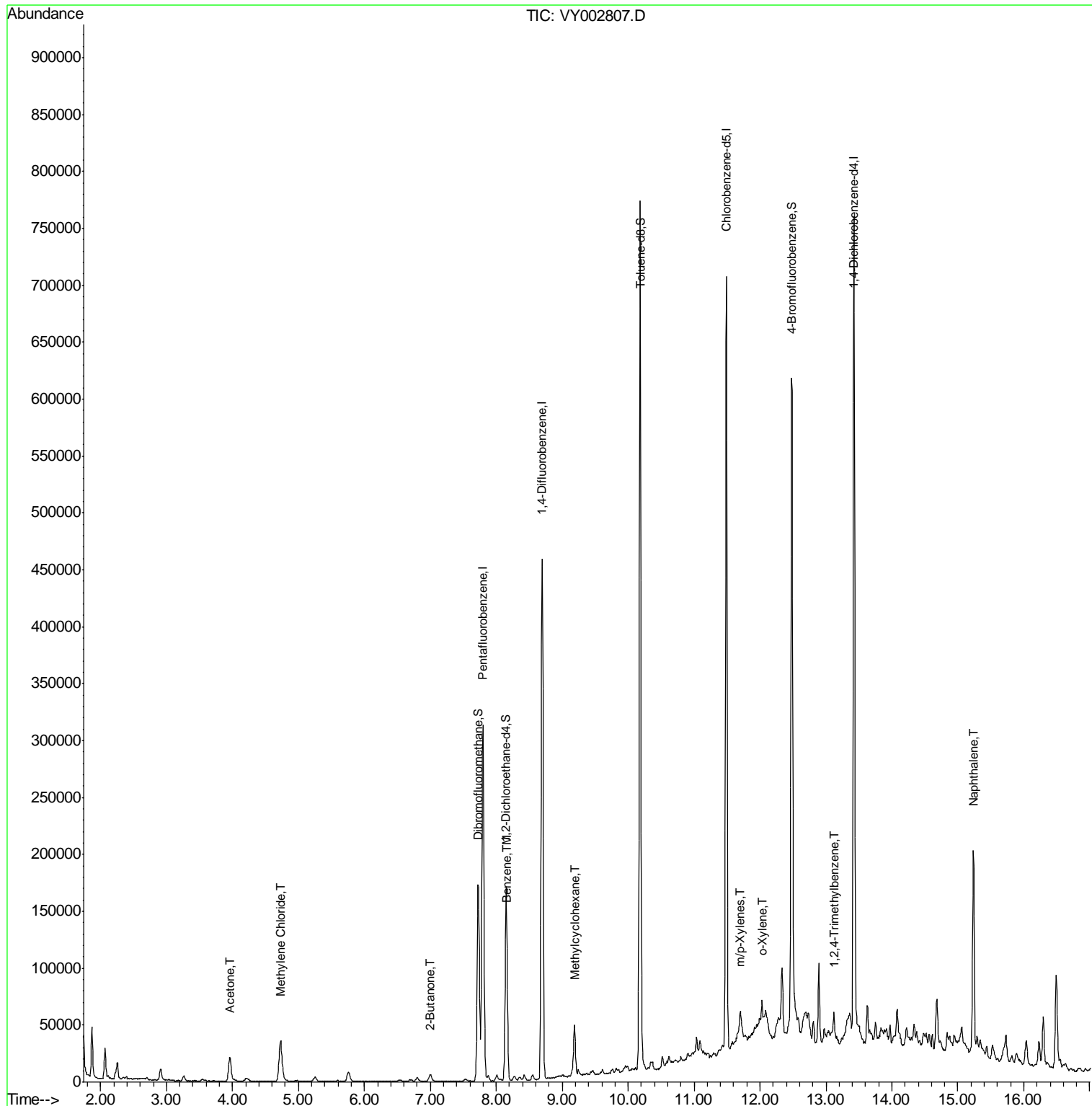
						Qvalue
16) Acetone	3.96	43	36338	67.599	ug/l	98
20) Methylene Chloride	4.73	84	28817	10.970	ug/l	99
25) 2-Butanone	7.01	43	8890	10.615	ug/l #	85
39) Methylcyclohexane	9.18	83	20568	4.356	ug/l	97
40) Benzene	8.17	78	11650	1.101	ug/l	98
68) m/p-Xylenes	11.70	106	6972	1.319	ug/l	90
69) o-Xylene	12.03	106	6530	1.308	ug/l	98
84) 1,2,4-Trimethylbenzene	13.12	105	10564	1.001	ug/l	99
95) Naphthalene	15.23	128	146625	17.263	ug/l	98

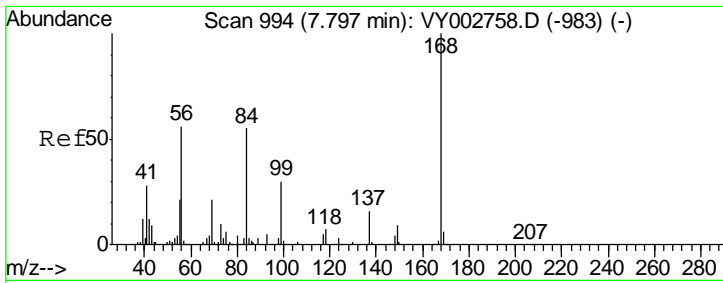
(#) = qualifier out of range (m) = manual integration (+) = signals summed

Data Path : Z:\VOASRV\HPCHEM1\MSVOA Y\DATA\VY060120\  
 Data File : VY002807.D  
 Acq On : 01 Jun 2020 14:03  
 Operator : SY/MD  
 Sample : L2814-01  
 Misc : 7.34G/5ML/MSVOA Y/SOIL  
 ALS Vial : 7 Sample Multiplier: 1

Instrument :  
 MSVOA\_Y  
 ClientSampleId :  
 PL-02-052920

Quant Time: Jun 01 18:26:05 2020  
 Quant Method : Z:\VOASRV\HPCHEM1\MSVOA\_Y\METHODS\82Y052720S.M  
 Quant Title : SW846 8260  
 QLast Update : Wed May 27 13:13:33 2020  
 Response via : Initial Calibration

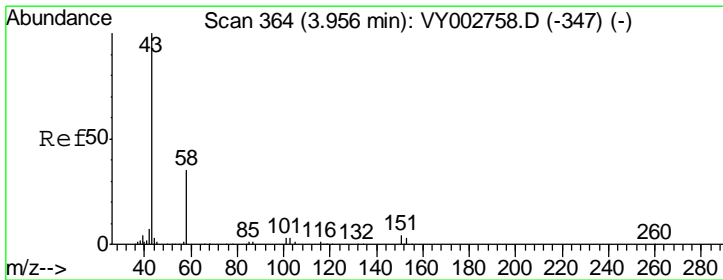
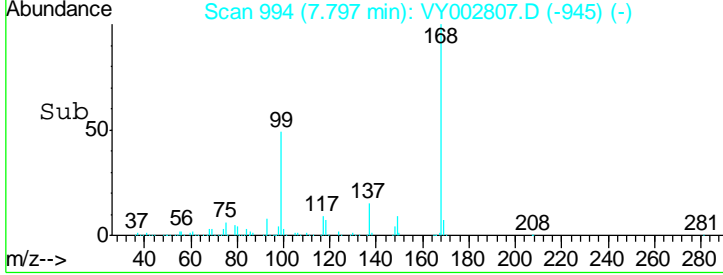
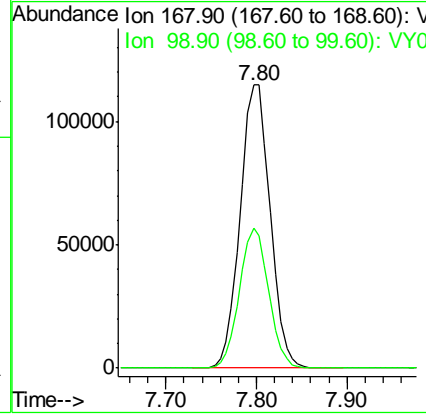
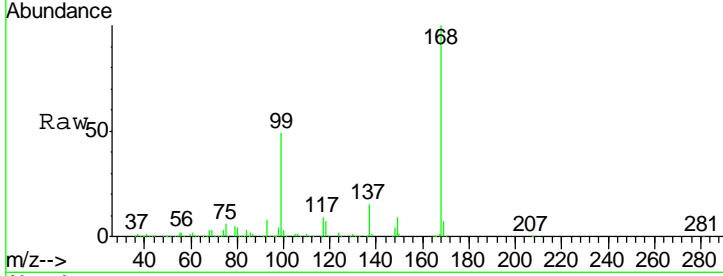




#1  
 Pentafluorobenzene  
 Concen: 50.000 ug/l  
 RT: 7.80 min Scan# 994  
 Delta R.T. -0.00 min  
 Lab File: VY002807.D  
 Acq: 01 Jun 2020 14:03

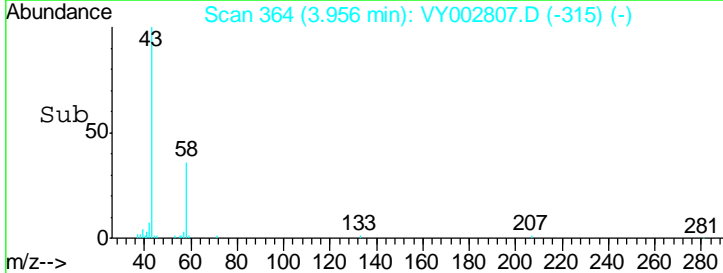
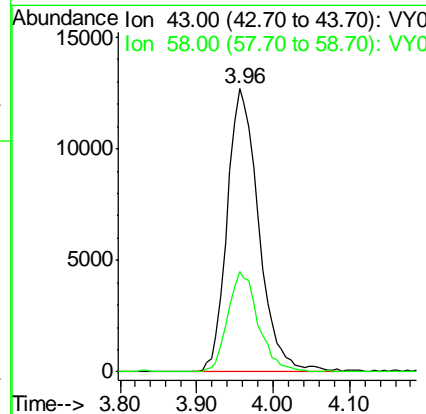
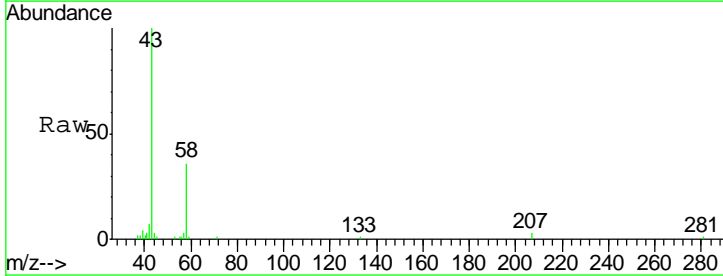
Instrument : MSVOA\_Y  
 ClientSampled : PL-02-052920

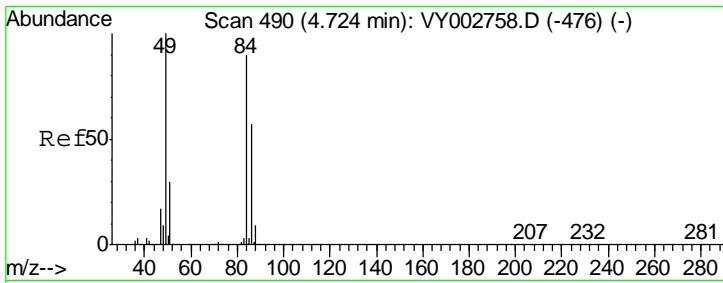
Tgt Ion	Resp	Lower	Upper
168	100		
99	49.5	39.0	58.4



#16  
 Acetone  
 Concen: 67.599 ug/l  
 RT: 3.96 min Scan# 364  
 Delta R.T. -0.00 min  
 Lab File: VY002807.D  
 Acq: 01 Jun 2020 14:03

Tgt Ion	Resp	Lower	Upper
43	100		
58	35.6	27.7	41.5

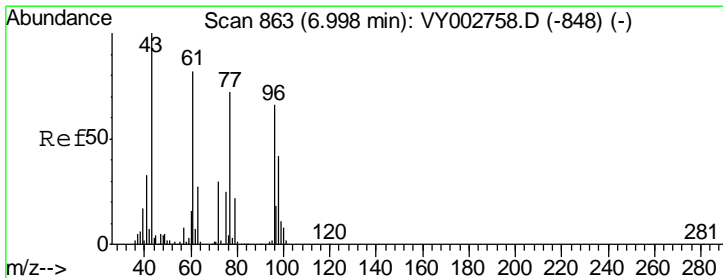
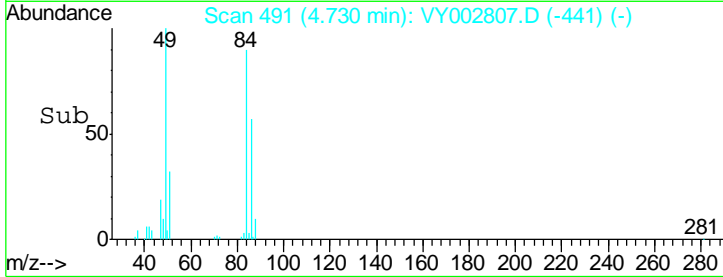
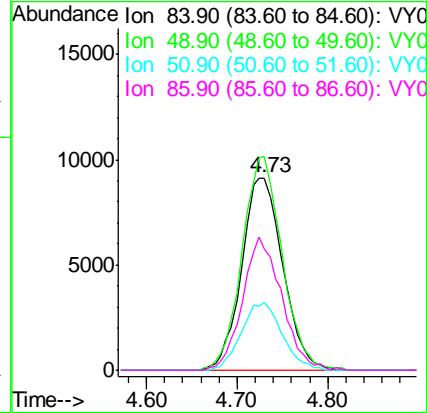
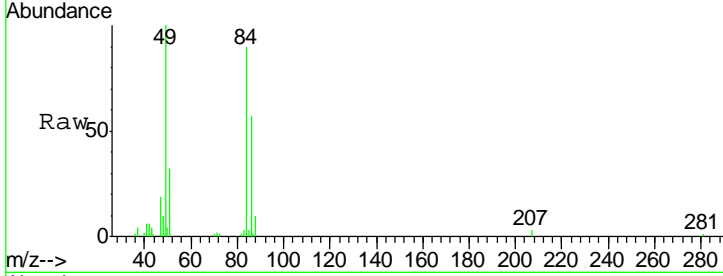




#20  
 Methylene Chloride  
 Concen: 10.970 ug/l  
 RT: 4.73 min Scan# 491  
 Delta R.T. 0.01 min  
 Lab File: VY002807.D  
 Acq: 01 Jun 2020 14:03

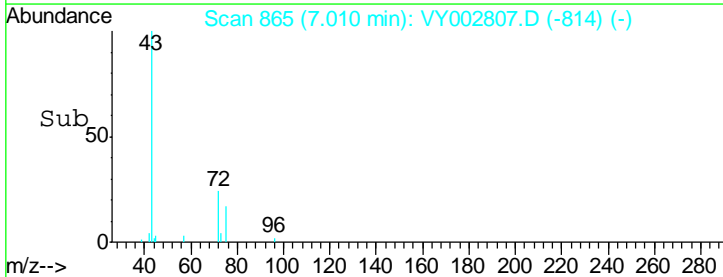
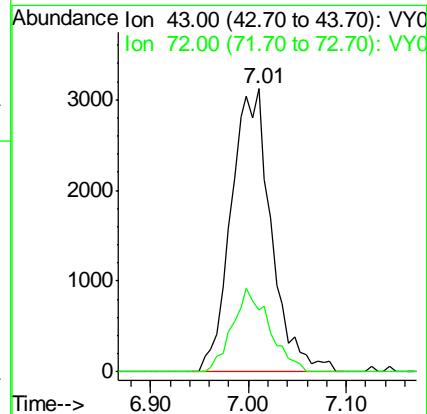
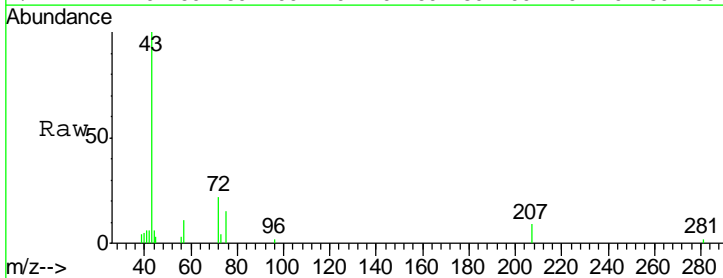
Instrument :  
 MSVOA\_Y  
 ClientSampled :  
 PL-02-052920

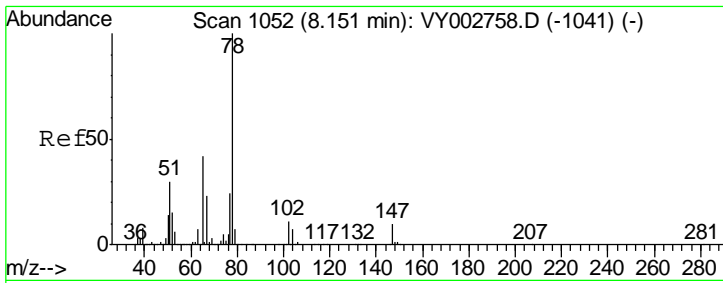
Tgt Ion	Resp	Lower	Upper
84	28817		
49	111.0	88.5	132.7
51	35.2	26.8	40.2
86	62.9	50.6	75.8



#25  
 2-Butanone  
 Concen: 10.615 ug/l  
 RT: 7.01 min Scan# 865  
 Delta R.T. 0.01 min  
 Lab File: VY002807.D  
 Acq: 01 Jun 2020 14:03

Tgt Ion	Resp	Lower	Upper
43	8890		
72	21.9	23.9	35.9#

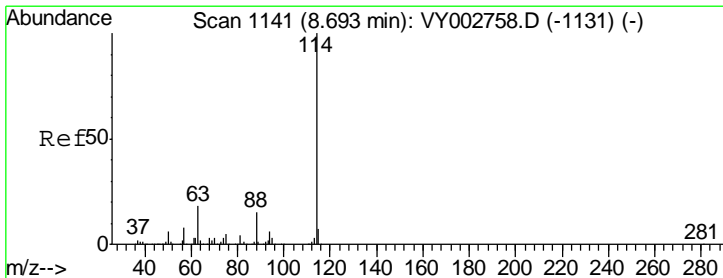
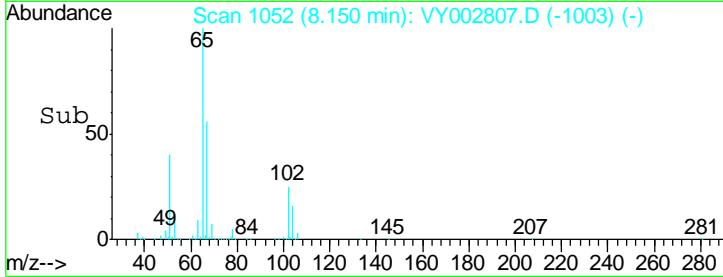
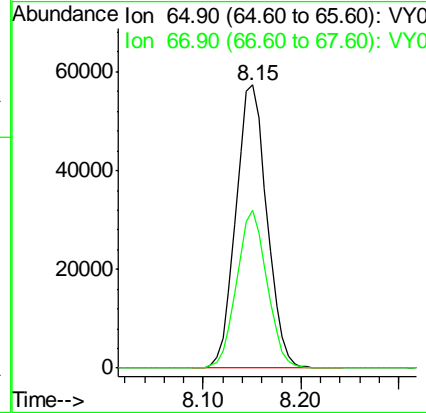
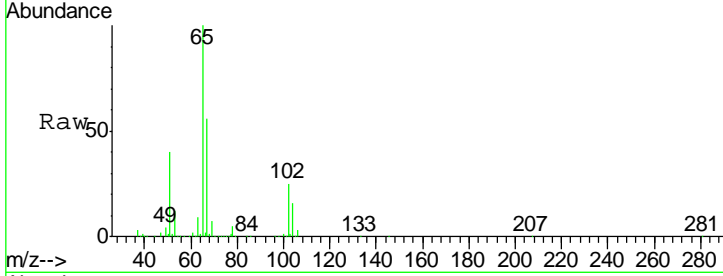




#33  
 1,2-Dichloroethane-d4  
 Concen: 55.123 ug/l  
 RT: 8.15 min Scan# 1052  
 Delta R.T. -0.00 min  
 Lab File: VY002807.D  
 Acq: 01 Jun 2020 14:03

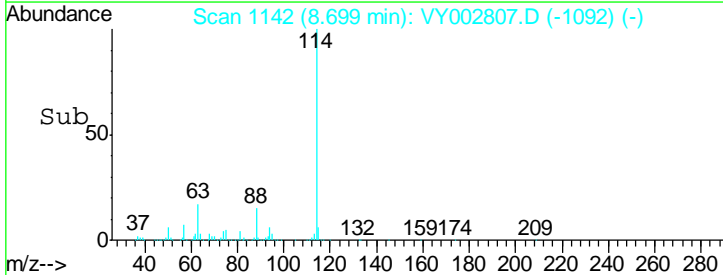
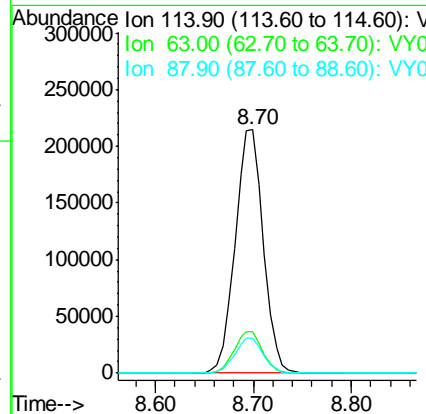
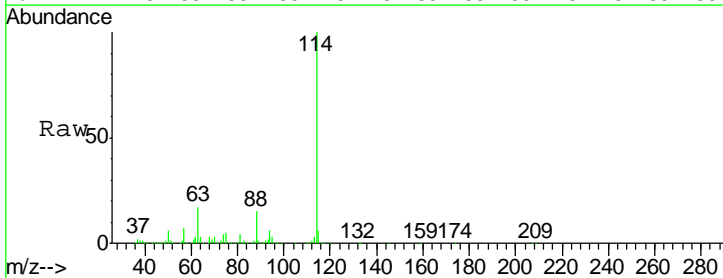
Instrument :  
 MSVOA\_Y  
 ClientSampled :  
 PL-02-052920

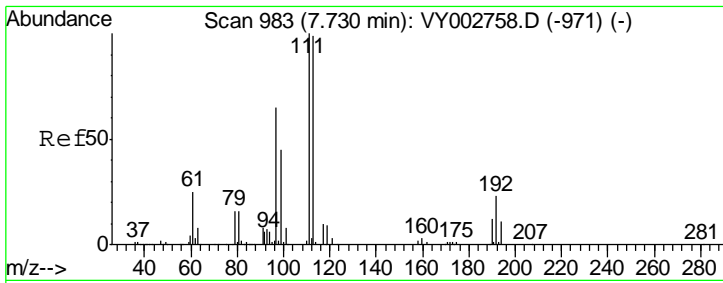
Tgt Ion: 65 Resp: 126368  
 Ion Ratio Lower Upper  
 65 100  
 67 54.5 0.0 111.0



#34  
 1,4-Difluorobenzene  
 Concen: 50.000 ug/l  
 RT: 8.70 min Scan# 1142  
 Delta R.T. 0.01 min  
 Lab File: VY002807.D  
 Acq: 01 Jun 2020 14:03

Tgt Ion: 114 Resp: 425226  
 Ion Ratio Lower Upper  
 114 100  
 63 16.8 0.0 35.2  
 88 14.5 0.0 29.2

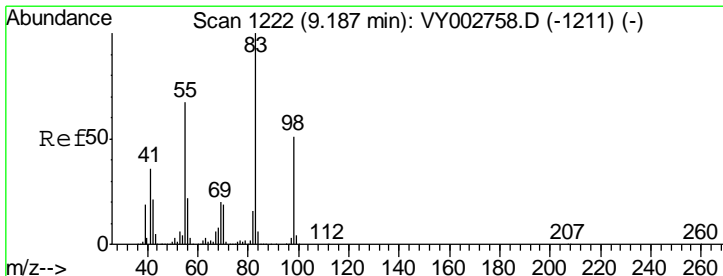
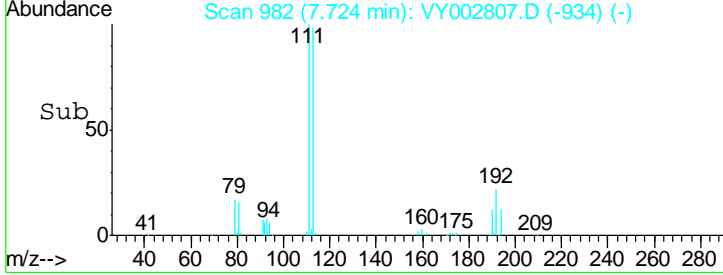
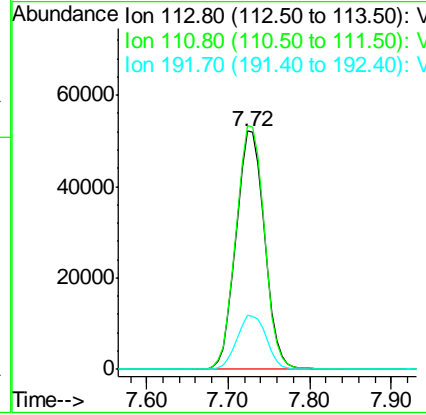
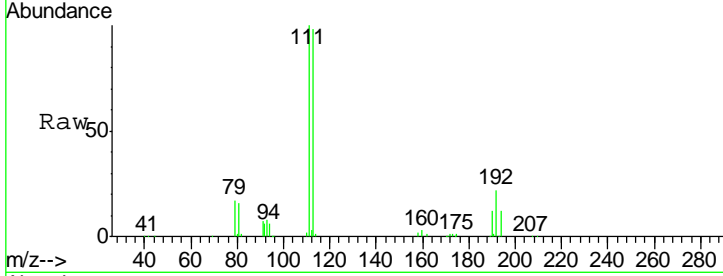




#35  
 Dibromofluoromethane  
 Concen: 50.471 ug/l  
 RT: 7.72 min Scan# 982  
 Delta R.T. -0.01 min  
 Lab File: VY002807.D  
 Acq: 01 Jun 2020 14:03

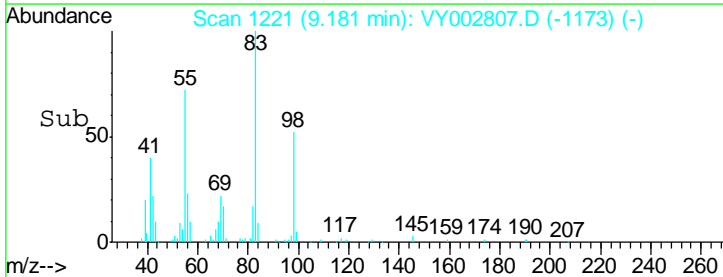
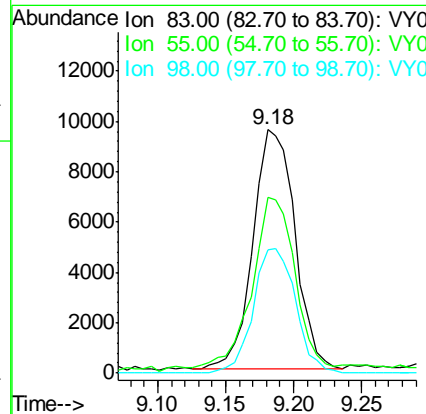
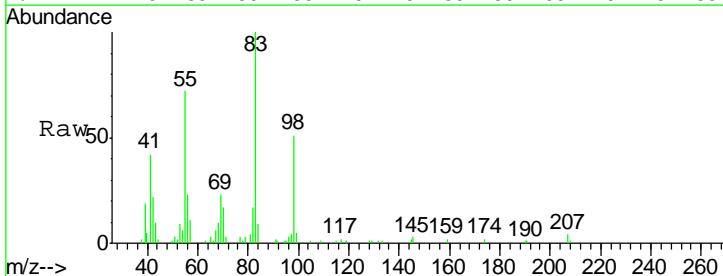
**Instrument :**  
 MSVOA\_Y  
**ClientSampled :**  
 PL-02-052920

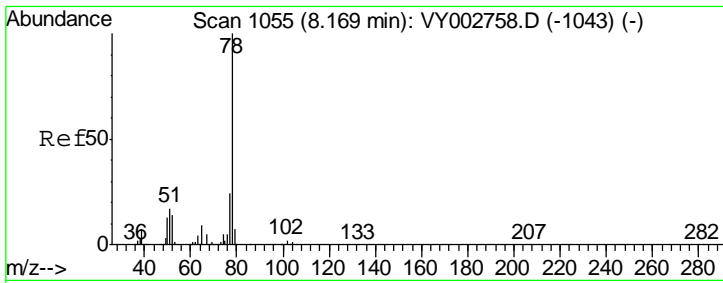
Tgt Ion	Resp	Lower	Upper
113	125776		
111	101.8	82.0	123.0
192	23.2	18.9	28.3



#39  
 Methylcyclohexane  
 Concen: 4.356 ug/l  
 RT: 9.18 min Scan# 1221  
 Delta R.T. -0.01 min  
 Lab File: VY002807.D  
 Acq: 01 Jun 2020 14:03

Tgt Ion	Resp	Lower	Upper
83	20568		
55	71.3	53.3	79.9
98	51.7	41.1	61.7

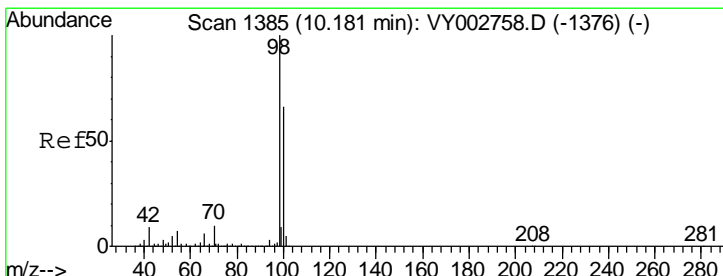
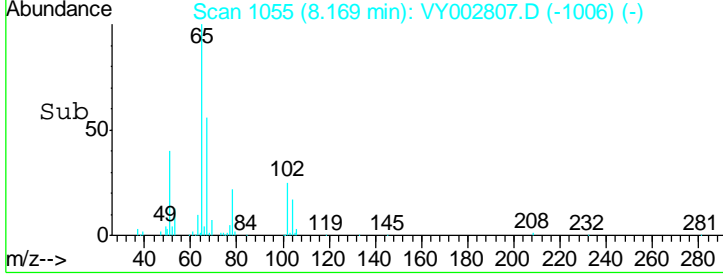
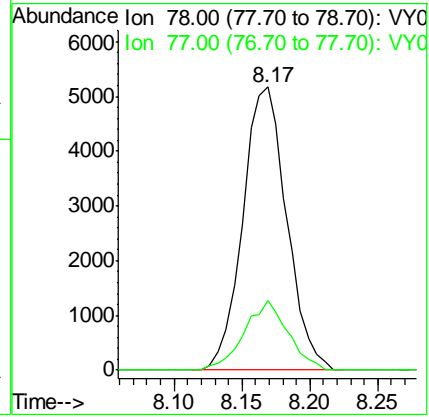
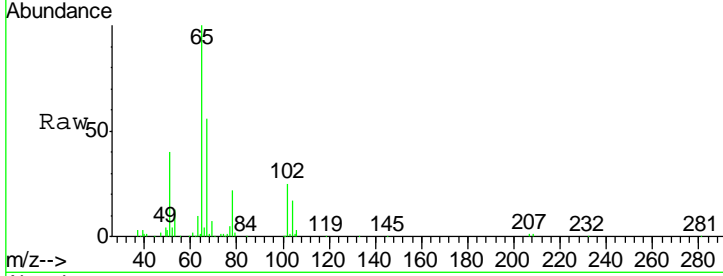




#40  
Benzene  
Concen: 1.101 ug/l  
RT: 8.17 min Scan# 1055  
Delta R.T. -0.00 min  
Lab File: VY002807.D  
Acq: 01 Jun 2020 14:03

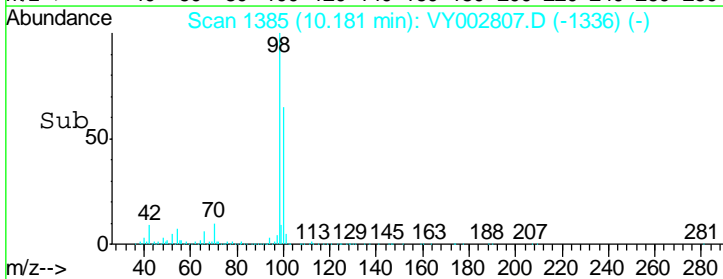
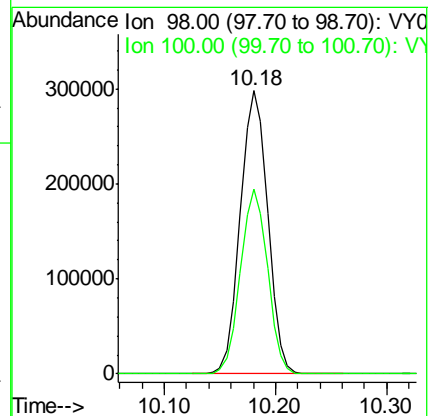
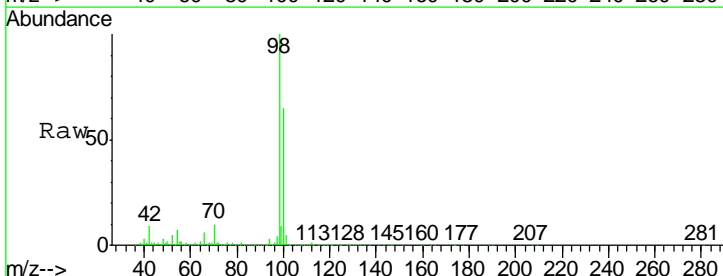
Instrument : MSVOA\_Y  
ClientSampled : PL-02-052920

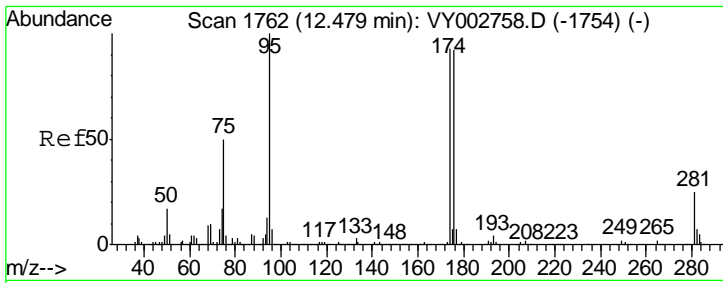
Tgt Ion	Resp	Lower	Upper
78	11650		
77	24.6	18.8	28.2



#50  
Toluene-d8  
Concen: 50.451 ug/l  
RT: 10.18 min Scan# 1385  
Delta R.T. -0.00 min  
Lab File: VY002807.D  
Acq: 01 Jun 2020 14:03

Tgt Ion	Resp	Lower	Upper
98	508347		
100	64.4	52.2	78.2

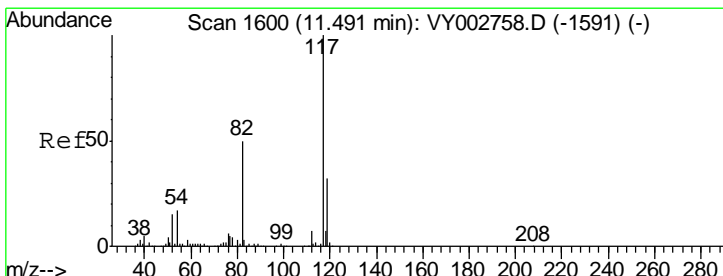
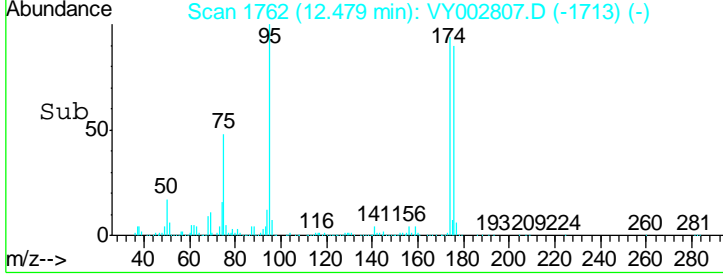
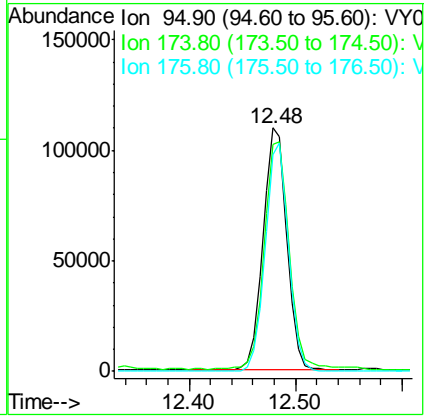
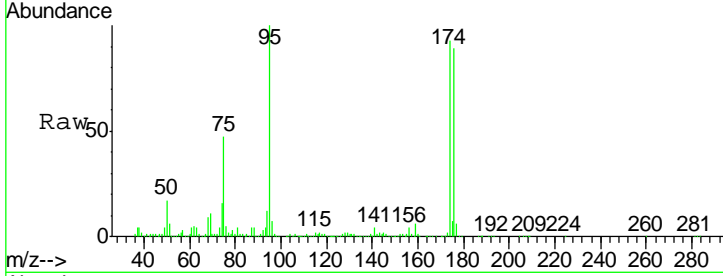




#62  
 4-Bromofluorobenzene  
 Concen: 49.608 ug/l  
 RT: 12.48 min Scan# 1762  
 Delta R.T. -0.00 min  
 Lab File: VY002807.D  
 Acq: 01 Jun 2020 14:03

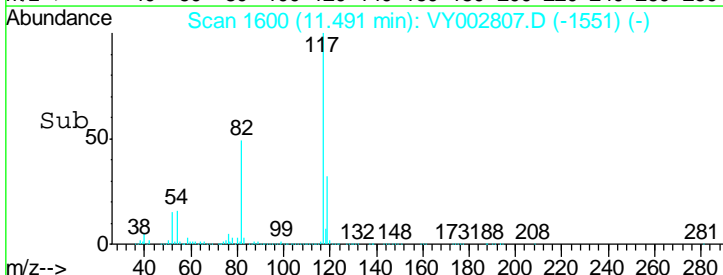
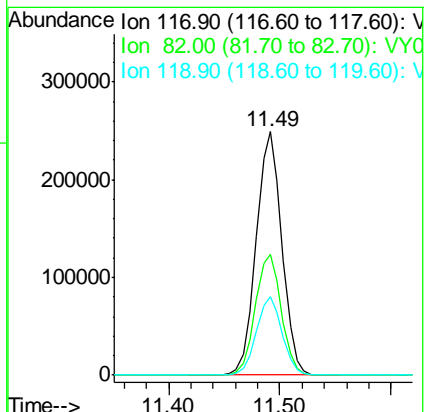
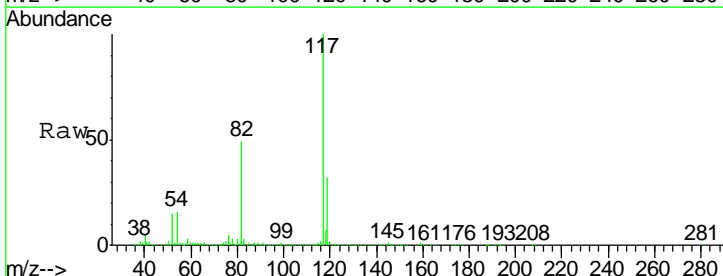
Instrument : MSVOA\_Y  
 ClientSampled : PL-02-052920

Tgt Ion	Resp	Lower	Upper
95	170824		
174	98.4	0.0	191.2
176	92.4	0.0	188.8

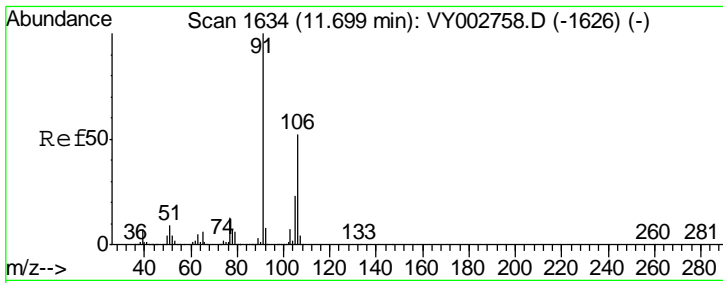


#63  
 Chlorobenzene-d5  
 Concen: 50.000 ug/l  
 RT: 11.49 min Scan# 1600  
 Delta R.T. -0.00 min  
 Lab File: VY002807.D  
 Acq: 01 Jun 2020 14:03

Tgt Ion	Resp	Lower	Upper
117	397948		
82	49.4	40.2	60.4
119	32.3	25.8	38.8



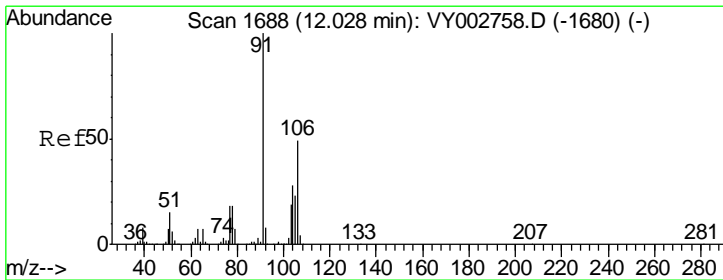
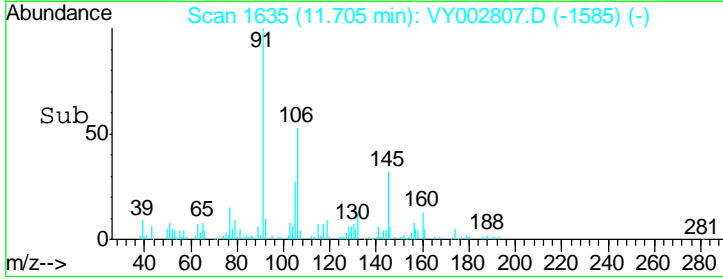
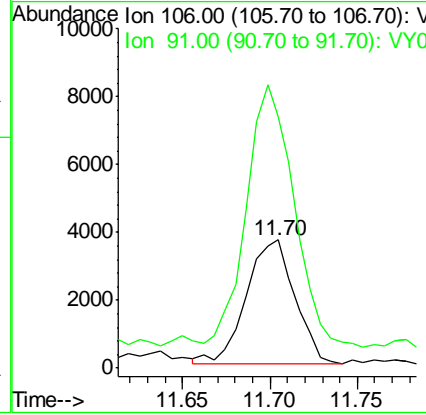
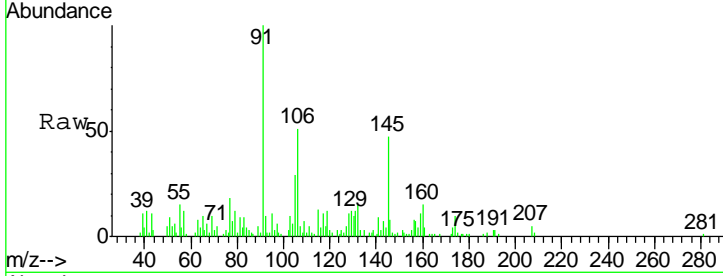




#68  
 m/p-Xylenes  
 Concen: 1.319 ug/l  
 RT: 11.70 min Scan# 1635  
 Delta R.T. 0.01 min  
 Lab File: VY002807.D  
 Acq: 01 Jun 2020 14:03

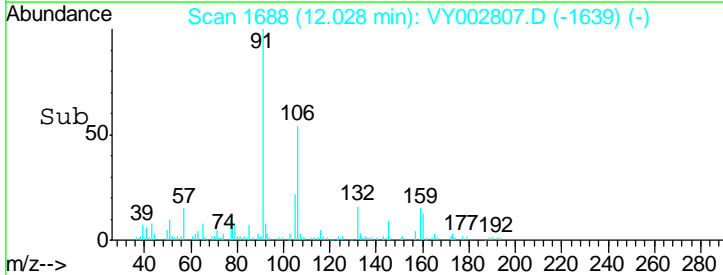
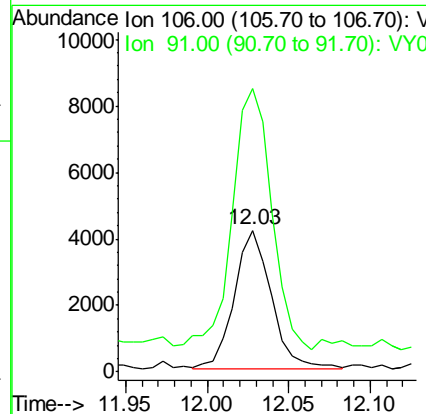
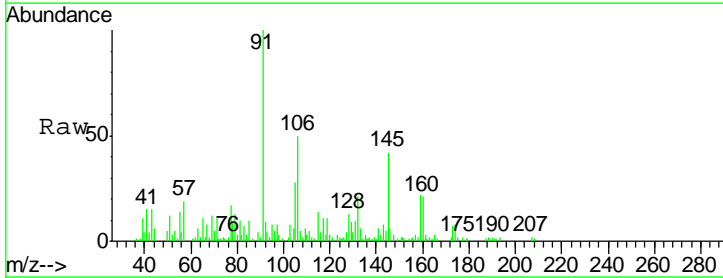
**Instrument :**  
 MSVOA\_Y  
**ClientSampled :**  
 PL-02-052920

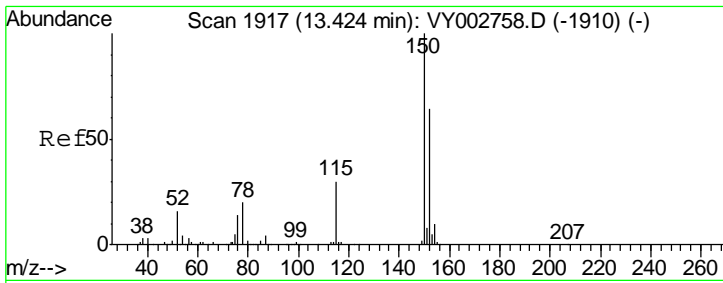
Tgt Ion:106 Resp: 6972  
 Ion Ratio Lower Upper  
 106 100  
 91 210.3 156.0 234.0



#69  
 o-Xylene  
 Concen: 1.308 ug/l  
 RT: 12.03 min Scan# 1688  
 Delta R.T. -0.00 min  
 Lab File: VY002807.D  
 Acq: 01 Jun 2020 14:03

Tgt Ion:106 Resp: 6530  
 Ion Ratio Lower Upper  
 106 100  
 91 201.3 102.4 307.1

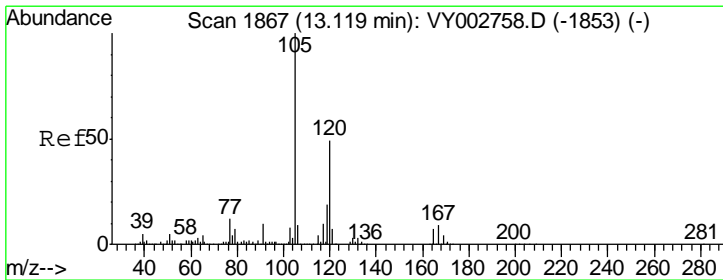
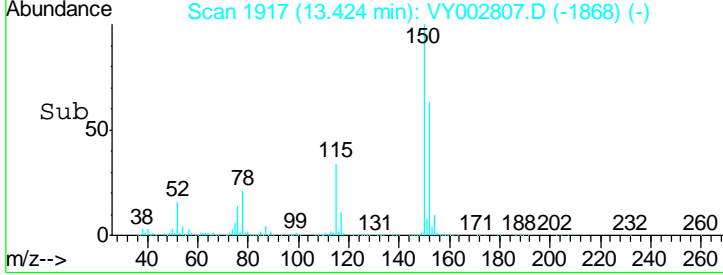
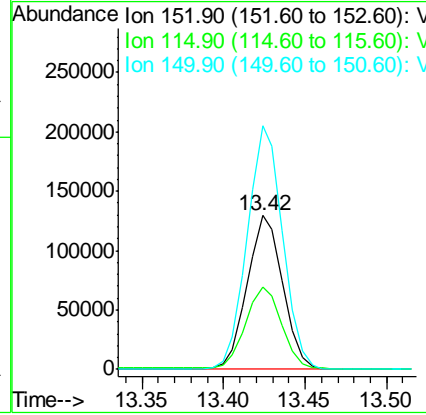
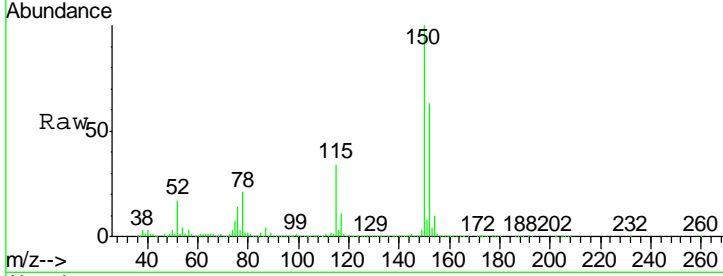




#72  
 1,4-Dichlorobenzene-d4  
 Concen: 50.000 ug/l  
 RT: 13.42 min Scan# 1917  
 Delta R.T. -0.00 min  
 Lab File: VY002807.D  
 Acq: 01 Jun 2020 14:03

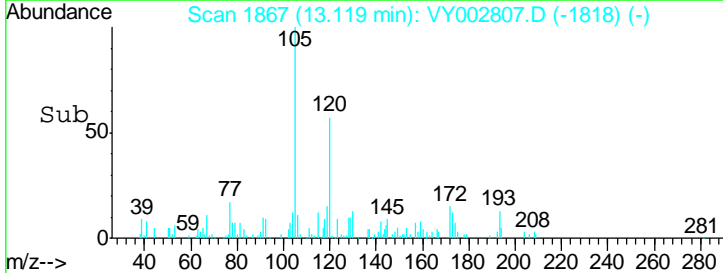
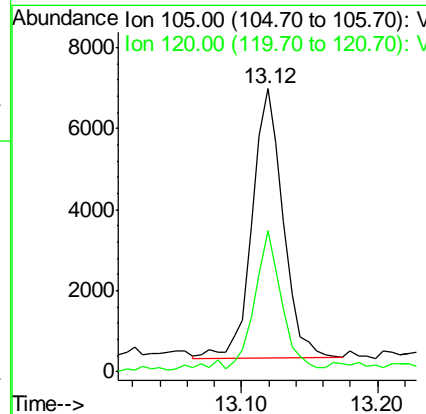
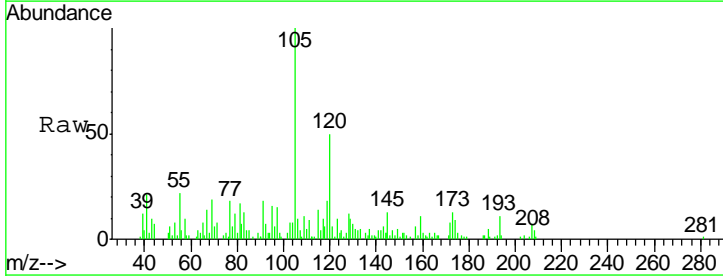
Instrument : MSVOA\_Y  
 ClientSampled : PL-02-052920

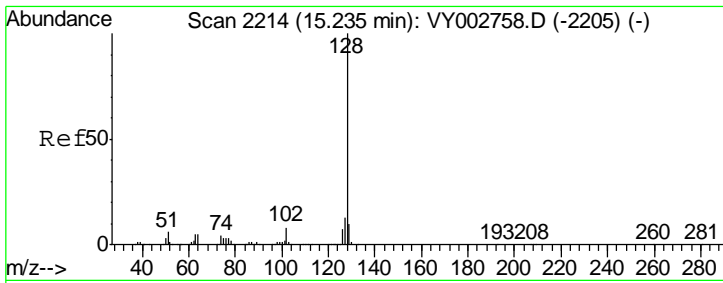
Tgt Ion	Resp	Lower	Upper
152	100		
115	54.2	27.0	81.0
150	158.0	0.0	344.8



#84  
 1,2,4-Trimethylbenzene  
 Concen: 1.001 ug/l  
 RT: 13.12 min Scan# 1867  
 Delta R.T. -0.00 min  
 Lab File: VY002807.D  
 Acq: 01 Jun 2020 14:03

Tgt Ion	Resp	Lower	Upper
105	100		
120	46.7	23.6	70.8





#95  
 Naphthalene  
 Concen: 17.263 ug/l  
 RT: 15.23 min Scan# 2214  
 Delta R.T. -0.00 min  
 Lab File: VY002807.D  
 Acq: 01 Jun 2020 14:03

Instrument : MSVOA\_Y  
 ClientSampled : PL-02-052920

Tot Ion	128	Resp	146625
Ion	Ratio	Lower	Upper
128	100		
127	13.2	10.3	15.5
129	12.0	8.7	13.1

