

Data Path : Z:\VOASRV\HPCHEM1\MSVOA Y\DATA\VY060320\
 Data File : VY002830.D
 Acq On : 03 Jun 2020 14:04
 Operator : SY/MD
 Sample : L2837-01
 Misc : 5.48G/5ML/MSVOA Y/SOIL
 ALS Vial : 11 Sample Multiplier: 1

Instrument :
 MSVOA_Y
 ClientSampleId :
 SP

Quant Time: Jun 03 17:26:17 2020
 Quant Method : Z:\VOASRV\HPCHEM1\MSVOA_Y\METHODS\82Y052720S.M
 Quant Title : SW846 8260
 QLast Update : Wed May 27 13:13:33 2020
 Response via : Initial Calibration

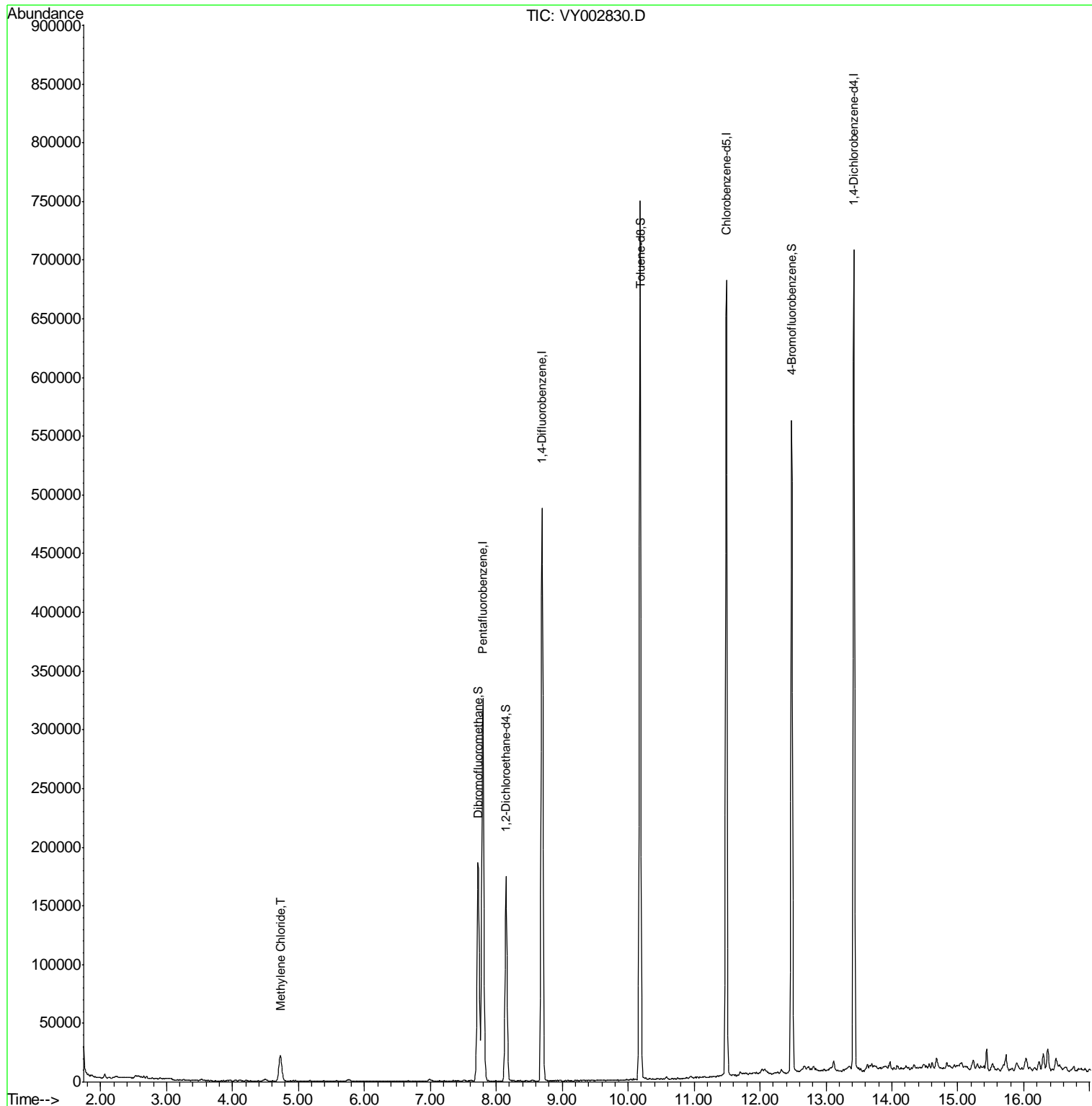
Internal Standards	R.T.	QIon	Response	Conc	Units	Dev(Min)
1) Pentafluorobenzene	7.80	168	272354	50.00	ug/l	0.00
34) 1,4-Difluorobenzene	8.69	114	435445	50.00	ug/l	0.00
63) Chlorobenzene-d5	11.49	117	400221	50.00	ug/l	0.00
72) 1,4-Dichlorobenzene-d4	13.42	152	190666	50.00	ug/l	0.00
System Monitoring Compounds						
33) 1,2-Dichloroethane-d4	8.15	65	133550	56.47	ug/l	0.00
Spiked Amount	50.000		Recovery	=	112.94%	
35) Dibromofluoromethane	7.72	113	136014	53.30	ug/l	0.00
Spiked Amount	50.000		Recovery	=	106.60%	
50) Toluene-d8	10.18	98	506702	49.11	ug/l	0.00
Spiked Amount	50.000		Recovery	=	98.22%	
62) 4-Bromofluorobenzene	12.48	95	174580	49.51	ug/l	0.00
Spiked Amount	50.000		Recovery	=	99.02%	
Target Compounds						
20) Methylene Chloride	4.73	84	18271	6.742	ug/l	99

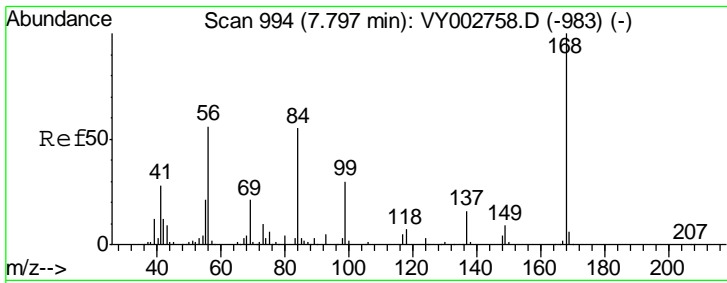
(#) = qualifier out of range (m) = manual integration (+) = signals summed

Data Path : Z:\VOASRV\HPCHEM1\MSVOA Y\DATA\VY060320\
 Data File : VY002830.D
 Acq On : 03 Jun 2020 14:04
 Operator : SY/MD
 Sample : L2837-01
 Misc : 5.48G/5ML/MSVOA Y/SOIL
 ALS Vial : 11 Sample Multiplier: 1

Instrument :
 MSVOA_Y
 ClientSampled :
 SP

Quant Time: Jun 03 17:26:17 2020
 Quant Method : Z:\VOASRV\HPCHEM1\MSVOA_Y\METHODS\82Y052720S.M
 Quant Title : SW846 8260
 QLast Update : Wed May 27 13:13:33 2020
 Response via : Initial Calibration

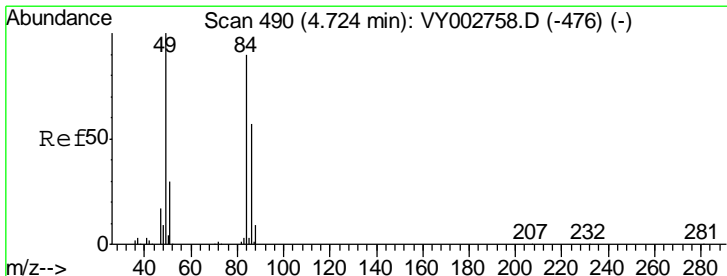
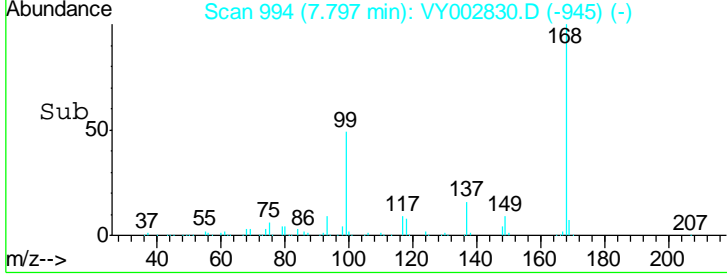
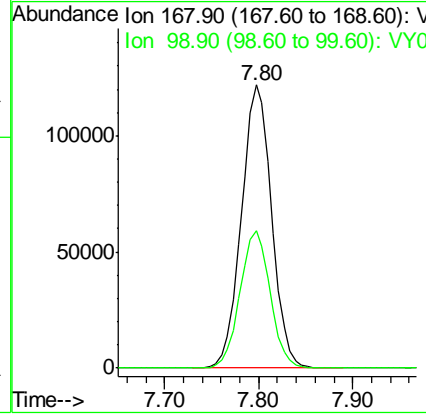
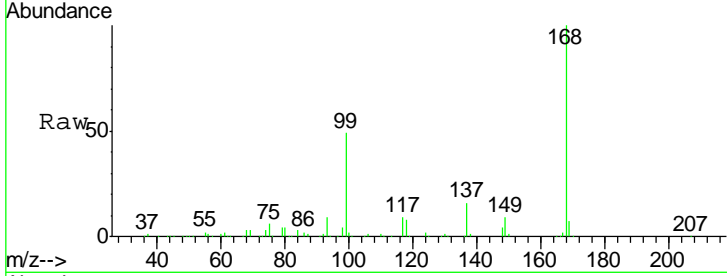




#1
 Pentafluorobenzene
 Concen: 50.000 ug/l
 RT: 7.80 min Scan# 994
 Delta R.T. 0.00 min
 Lab File: VY002830.D
 Acq: 03 Jun 2020 14:04

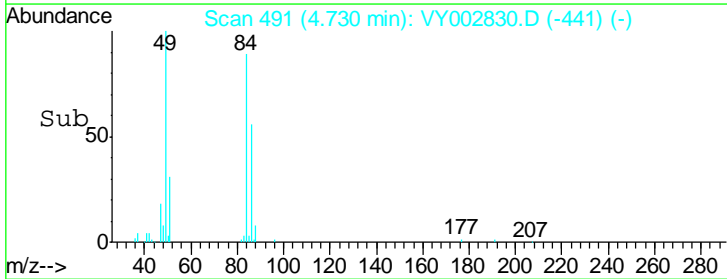
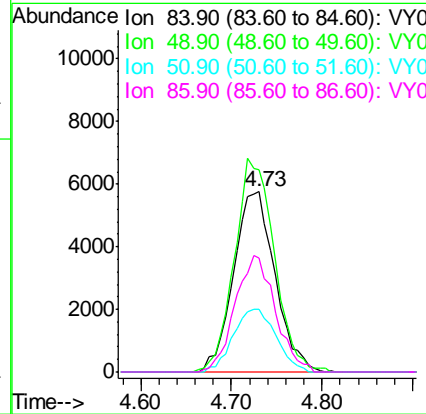
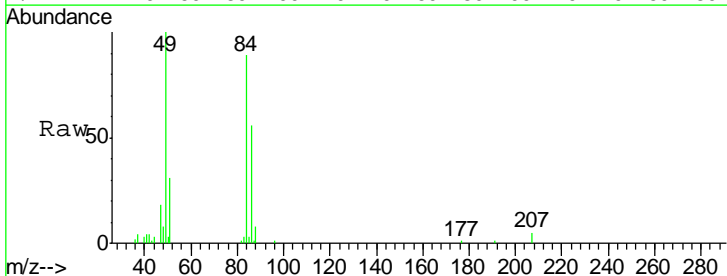
Instrument :
 MSVOA_Y
 ClientSampled :
 SP

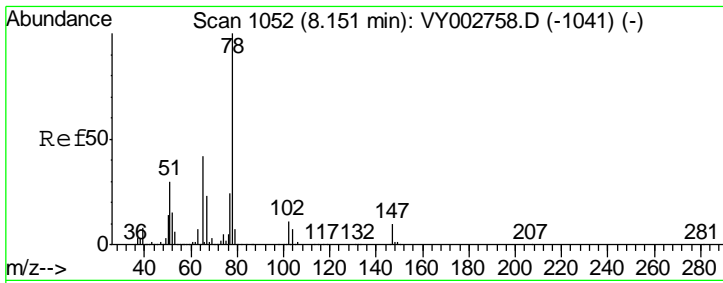
Tgt Ion	Resp	Lower	Upper
168	100		
99	48.7	39.0	58.4



#20
 Methylene Chloride
 Concen: 6.742 ug/l
 RT: 4.73 min Scan# 491
 Delta R.T. 0.01 min
 Lab File: VY002830.D
 Acq: 03 Jun 2020 14:04

Tgt Ion	Resp	Lower	Upper
84	100		
49	112.2	88.5	132.7
51	34.8	26.8	40.2
86	63.0	50.6	75.8

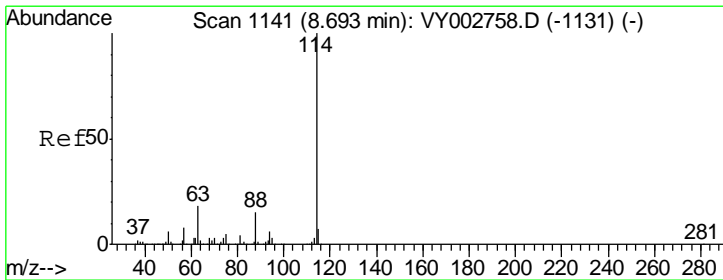
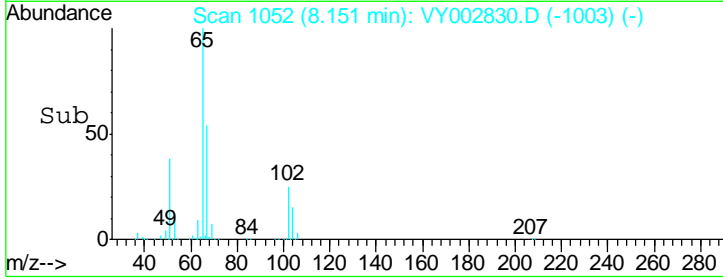
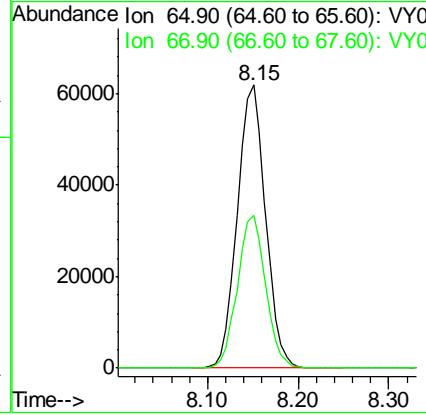
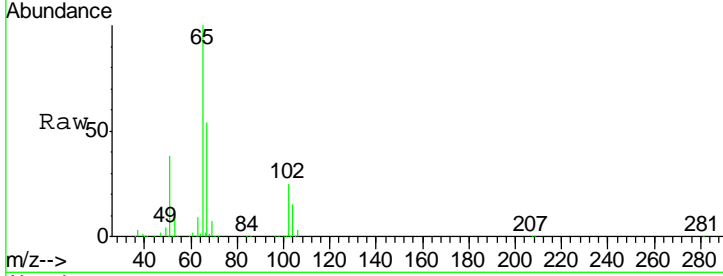




#33
 1,2-Dichloroethane-d4
 Concen: 56.474 ug/l
 RT: 8.15 min Scan# 1052
 Delta R.T. 0.00 min
 Lab File: VY002830.D
 Acq: 03 Jun 2020 14:04

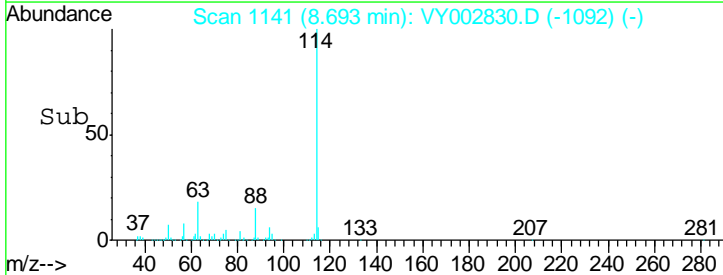
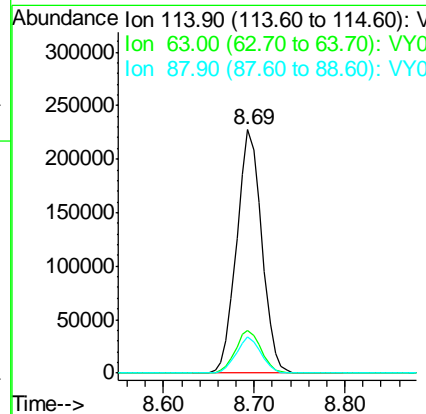
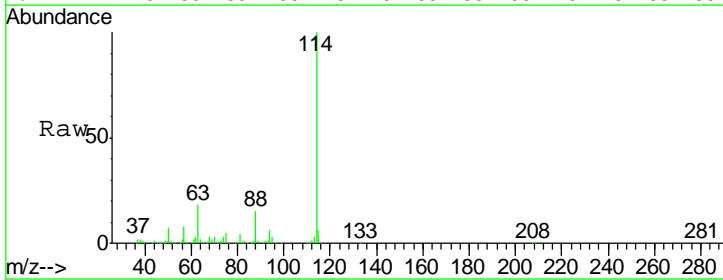
Instrument :
 MSVOA_Y
 ClientSampled :
 SP

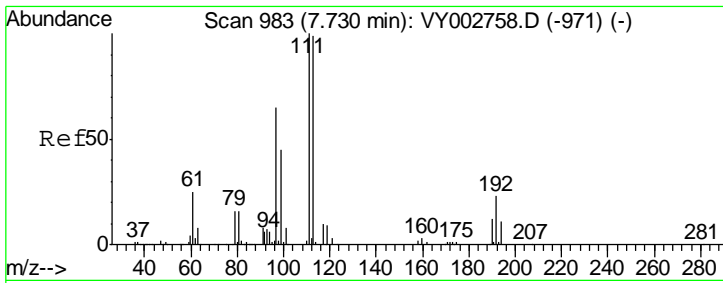
Tgt Ion	Resp	Lower	Upper
65	100		
67	54.0	0.0	111.0



#34
 1,4-Difluorobenzene
 Concen: 50.000 ug/l
 RT: 8.69 min Scan# 1141
 Delta R.T. 0.00 min
 Lab File: VY002830.D
 Acq: 03 Jun 2020 14:04

Tgt Ion	Resp	Lower	Upper
114	100		
63	17.8	0.0	35.2
88	14.8	0.0	29.2

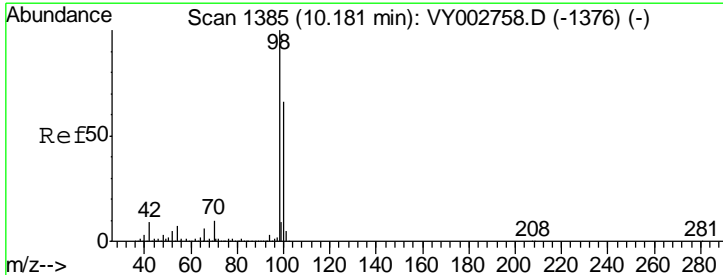
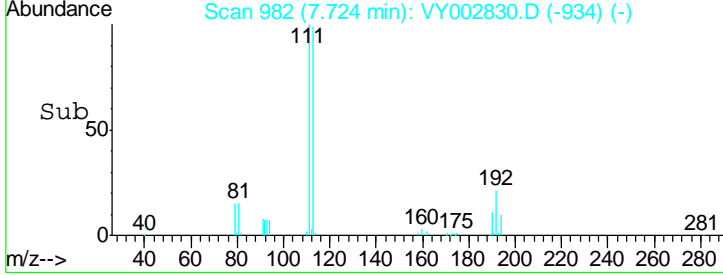
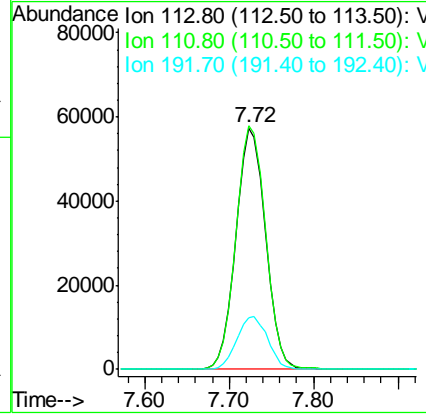
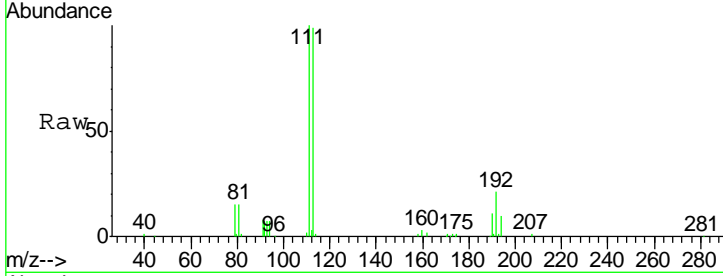




#35
 Dibromofluoromethane
 Concen: 53.299 ug/l
 RT: 7.72 min Scan# 982
 Delta R.T. -0.01 min
 Lab File: VY002830.D
 Acq: 03 Jun 2020 14:04

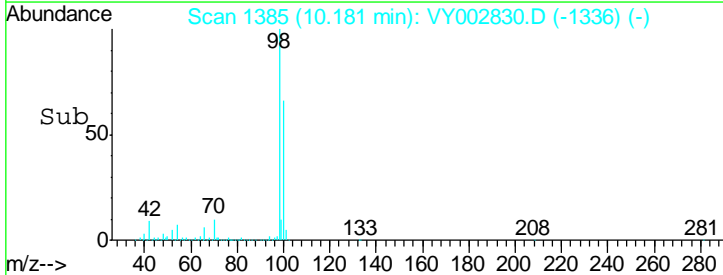
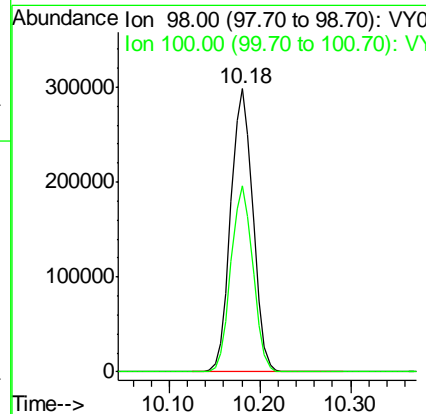
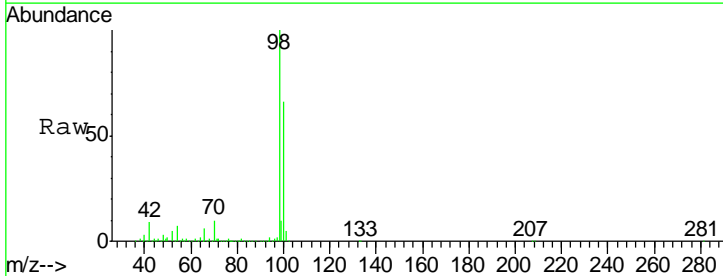
Instrument :
 MSVOA_Y
 ClientSampled :
 SP

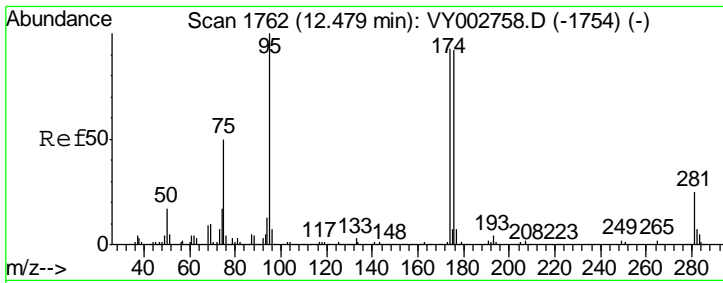
Tgt Ion	Resp	Lower	Upper
113	136014		
111	101.4	82.0	123.0
192	22.7	18.9	28.3



#50
 Toluene-d8
 Concen: 49.108 ug/l
 RT: 10.18 min Scan# 1385
 Delta R.T. 0.00 min
 Lab File: VY002830.D
 Acq: 03 Jun 2020 14:04

Tgt Ion	Resp	Lower	Upper
98	506702		
100	65.2	52.2	78.2

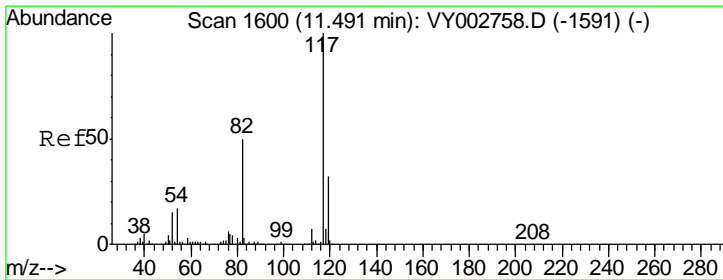
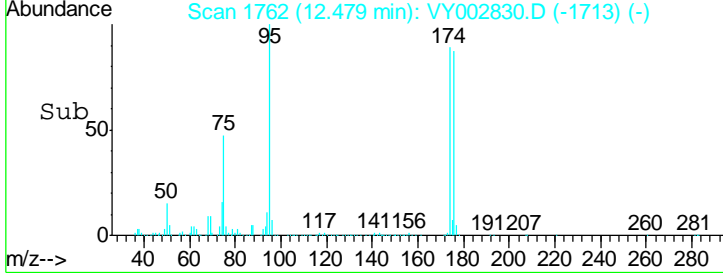
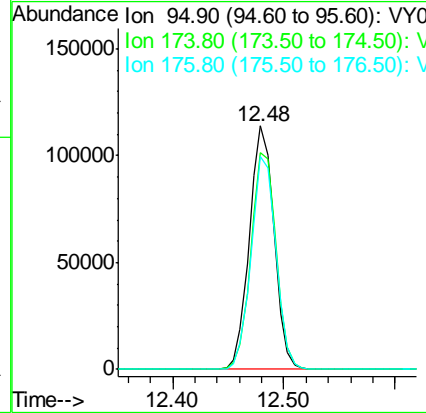
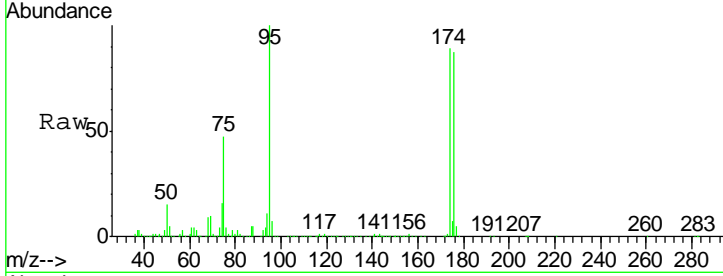




#62
 4-Bromofluorobenzene
 Concen: 49.509 ug/l
 RT: 12.48 min Scan# 1762
 Delta R.T. 0.00 min
 Lab File: VY002830.D
 Acq: 03 Jun 2020 14:04

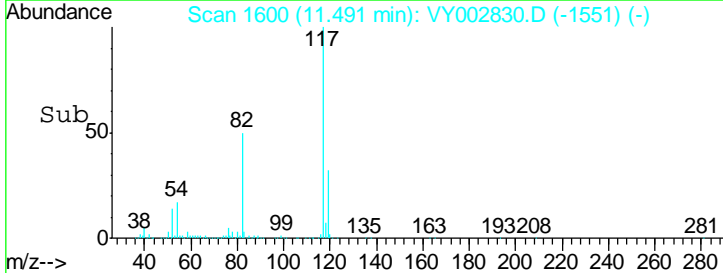
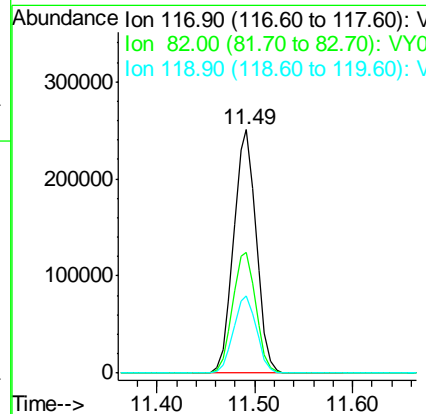
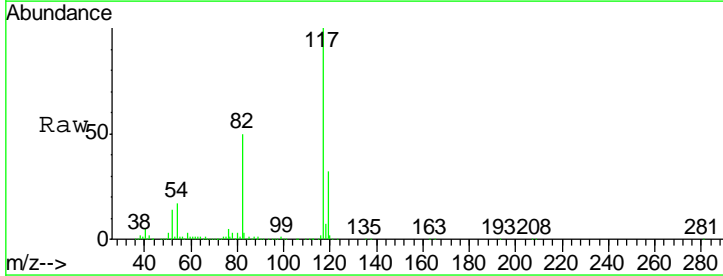
Instrument :
 MSVOA_Y
 ClientSampled :
 SP

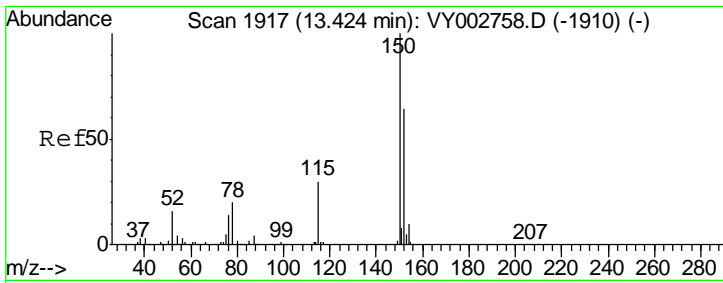
Tgt Ion	Resp	Lower	Upper
95	174580		
174	91.4	0.0	191.2
176	88.5	0.0	188.8



#63
 Chlorobenzene-d5
 Concen: 50.000 ug/l
 RT: 11.49 min Scan# 1600
 Delta R.T. 0.00 min
 Lab File: VY002830.D
 Acq: 03 Jun 2020 14:04

Tgt Ion	Resp	Lower	Upper
117	400221		
82	49.8	40.2	60.4
119	31.6	25.8	38.8





#72
 1,4-Dichlorobenzene-d4
 Concen: 50.000 ug/l
 RT: 13.42 min Scan# 1917
 Delta R.T. 0.00 min
 Lab File: VY002830.D
 Acq: 03 Jun 2020 14:04

Instrument :
 MSVOA_Y
 ClientSampled :
 SP

Tot Ion	Resp	Lower	Upper
152	190666		
115	54.4	27.0	81.0
150	156.4	0.0	344.8

