

Data Path : Z:\voasrv\HPCHEM1\MSVOA_Y\Data\VY060523\
 Data File : VY014014.D
 Acq On : 05 Jun 2023 17:53
 Operator : KP/MD
 Sample : 03018-11
 Misc : 3.75g/5.0mL/MSVOA_Y/SOIL
 ALS Vial : 19 Sample Multiplier: 1

Instrument :
 MSVOA_Y
 ClientSampleId :
 278

Quant Time: Jun 06 03:58:20 2023
 Quant Method : Z:\voasrv\HPCHEM1\MSVOA_Y\methods\82Y060123S.M
 Quant Title : SW846 8260
 QLast Update : Fri Jun 02 07:00:14 2023
 Response via : Initial Calibration

Compound	R.T.	QIon	Response	Conc	Units	Dev(Min)
Internal Standards						
1) Pentafluorobenzene	7.789	168	71288	50.000	ug/l	0.00
34) 1,4-Difluorobenzene	8.691	114	119965	50.000	ug/l	0.00
63) Chlorobenzene-d5	11.489	117	117840	50.000	ug/l	0.00
72) 1,4-Dichlorobenzene-d4	13.428	152	50926	50.000	ug/l	0.00
System Monitoring Compounds						
33) 1,2-Dichloroethane-d4	8.142	65	51856	54.950	ug/l	0.00
Spiked Amount	50.000	Range	50 - 163	Recovery	=	109.900%
35) Dibromofluoromethane	7.716	113	43896	57.577	ug/l	0.00
Spiked Amount	50.000	Range	54 - 147	Recovery	=	115.160%
50) Toluene-d8	10.179	98	148195	50.960	ug/l	0.00
Spiked Amount	50.000	Range	58 - 134	Recovery	=	101.920%
62) 4-Bromofluorobenzene	12.483	95	46991	47.398	ug/l	0.00
Spiked Amount	50.000	Range	30 - 143	Recovery	=	94.800%

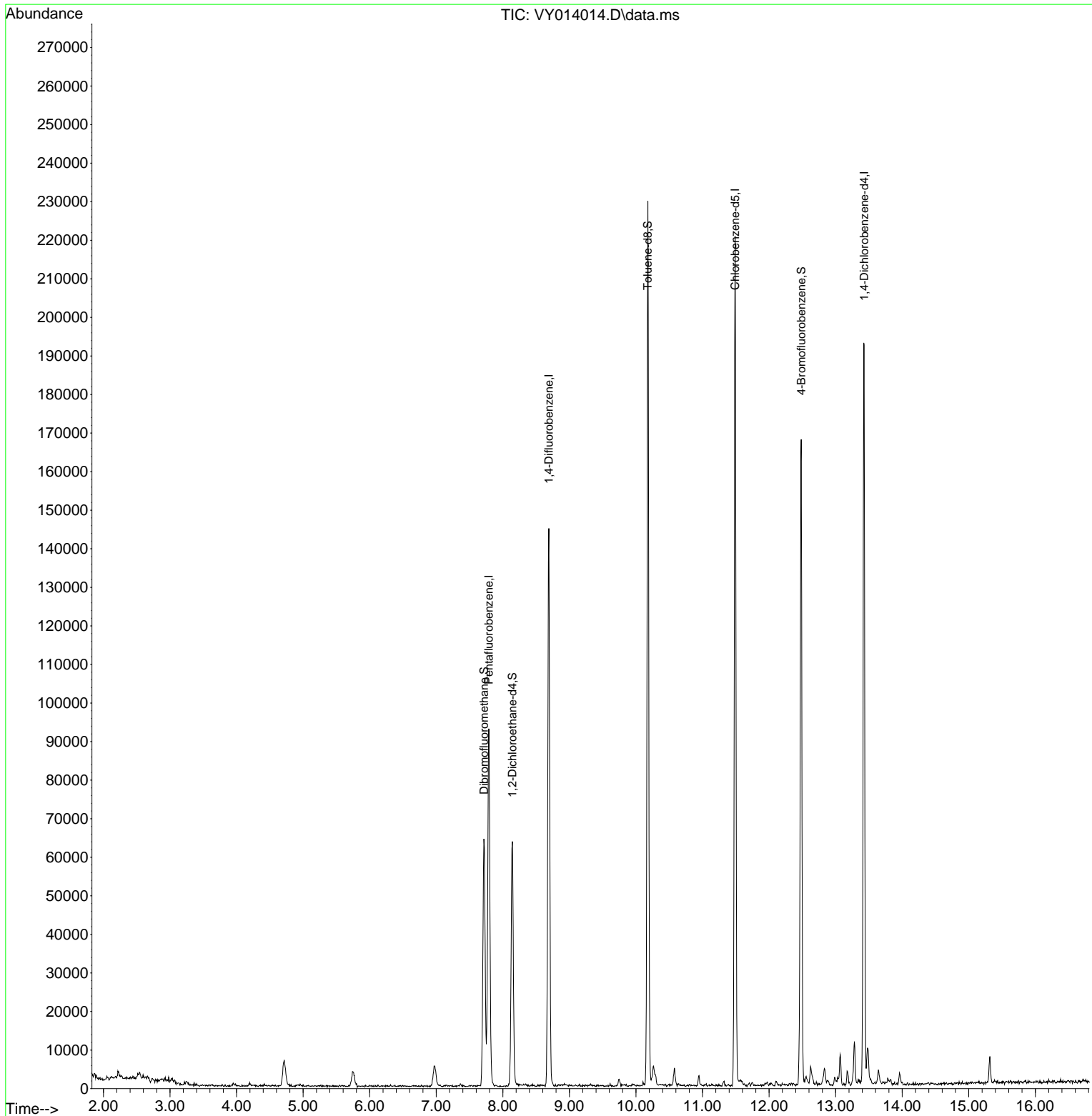
Target Compounds Qvalue

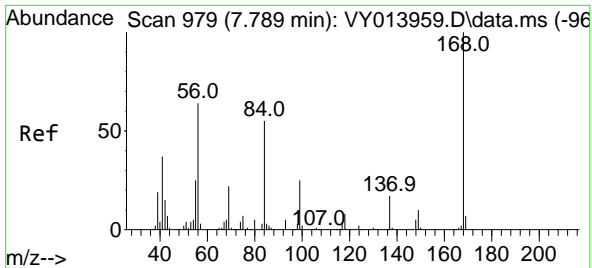
(#) = qualifier out of range (m) = manual integration (+) = signals summed

Data Path : Z:\voasrv\HPCHEM1\MSVOA_Y\Data\VY060523\
 Data File : VY014014.D
 Acq On : 05 Jun 2023 17:53
 Operator : KP/MD
 Sample : 03018-11
 Misc : 3.75g/5.0mL/MSVOA_Y/SOIL
 ALS Vial : 19 Sample Multiplier: 1

Instrument :
 MSVOA_Y
 ClientSampleId :
 278

Quant Time: Jun 06 03:58:20 2023
 Quant Method : Z:\voasrv\HPCHEM1\MSVOA_Y\methods\82Y060123S.M
 Quant Title : SW846 8260
 QLast Update : Fri Jun 02 07:00:14 2023
 Response via : Initial Calibration

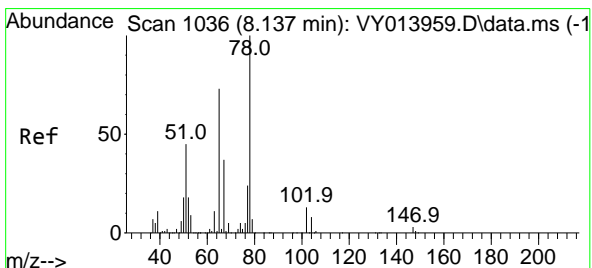
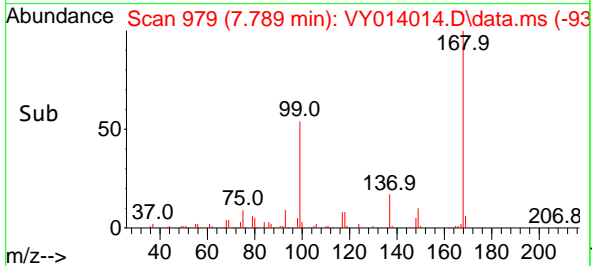
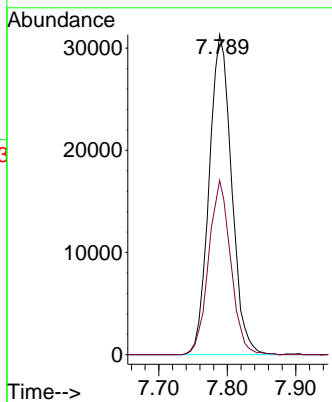
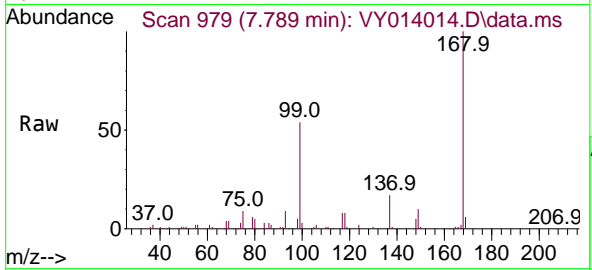




#1
 Pentafluorobenzene
 Concen: 50.000 ug/l
 RT: 7.789 min Scan# 91
 Delta R.T. -0.000 min
 Lab File: VY014014.D
 Acq: 05 Jun 2023 17:53

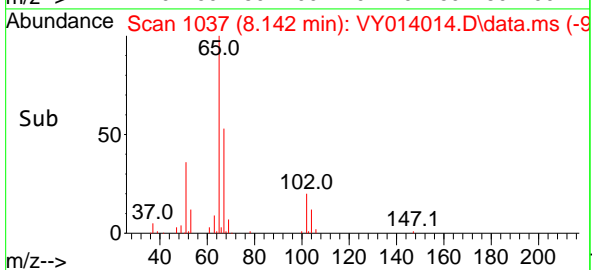
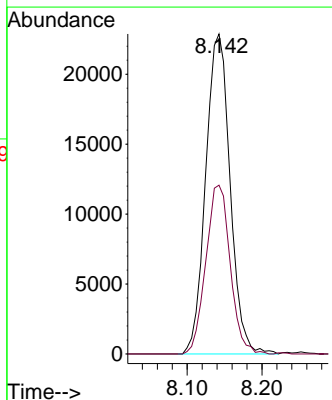
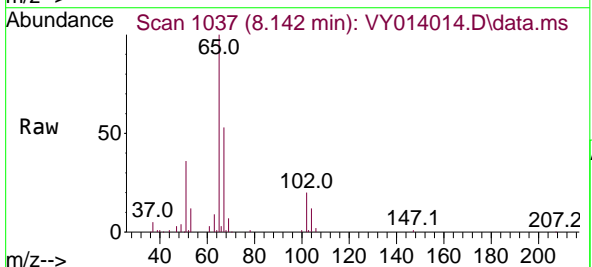
Instrument :
 MSVOA_Y
 ClientSampleId :
 278

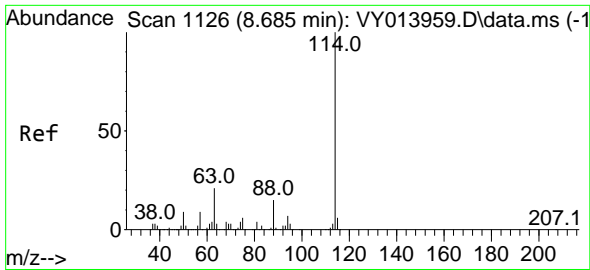
Tgt Ion:168 Resp: 71288
 Ion Ratio Lower Upper
 168 100
 99 54.4 43.4 65.0



#33
 1,2-Dichloroethane-d4
 Concen: 54.950 ug/l
 RT: 8.142 min Scan# 1037
 Delta R.T. 0.006 min
 Lab File: VY014014.D
 Acq: 05 Jun 2023 17:53

Tgt Ion: 65 Resp: 51856
 Ion Ratio Lower Upper
 65 100
 67 52.7 0.0 101.8

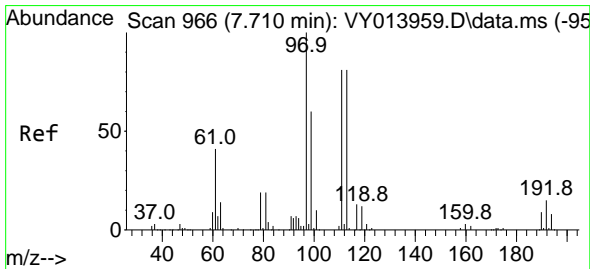
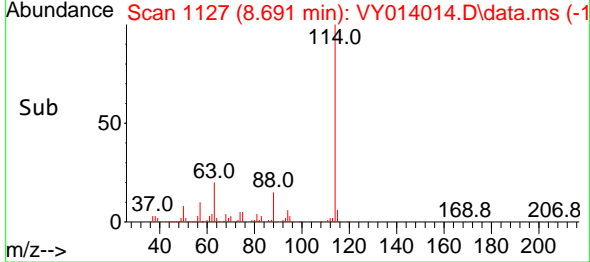
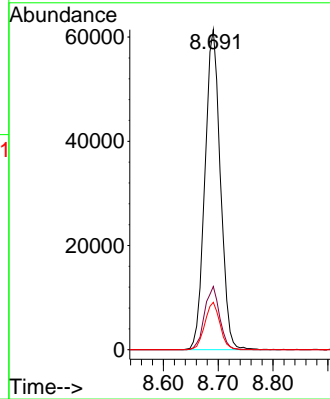
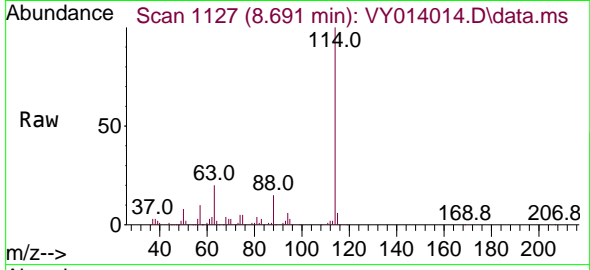




#34
 1,4-Difluorobenzene
 Concen: 50.000 ug/l
 RT: 8.691 min Scan# 1127
 Delta R.T. 0.006 min
 Lab File: VY014014.D
 Acq: 05 Jun 2023 17:53

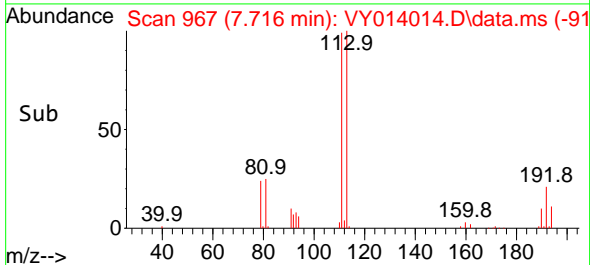
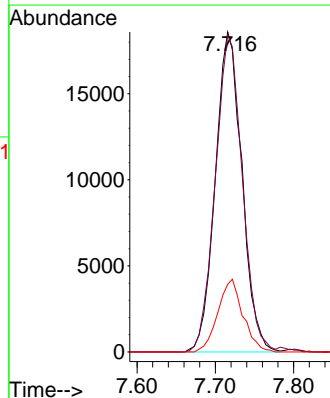
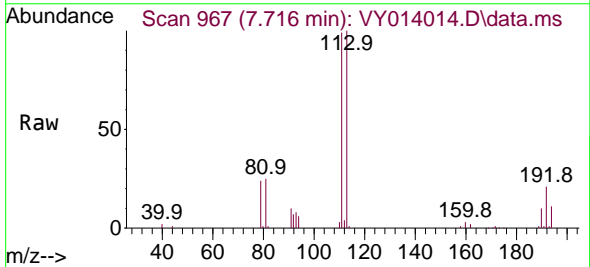
Instrument :
 MSVOA_Y
 ClientSampleId :
 278

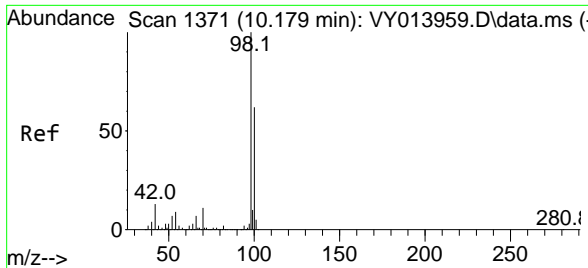
Tgt Ion:114 Resp: 119965
 Ion Ratio Lower Upper
 114 100
 63 19.7 0.0 42.4
 88 14.8 0.0 30.6



#35
 Dibromofluoromethane
 Concen: 57.577 ug/l
 RT: 7.716 min Scan# 967
 Delta R.T. 0.006 min
 Lab File: VY014014.D
 Acq: 05 Jun 2023 17:53

Tgt Ion:113 Resp: 43896
 Ion Ratio Lower Upper
 113 100
 111 100.4 81.3 121.9
 192 21.4 16.9 25.3

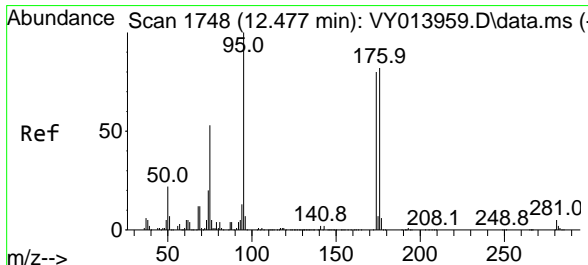
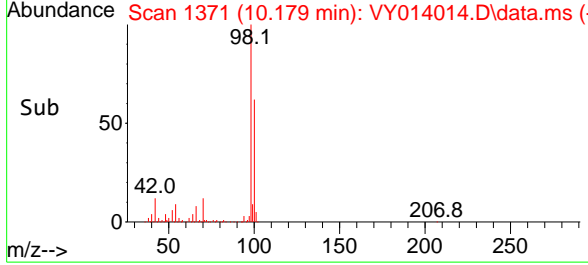
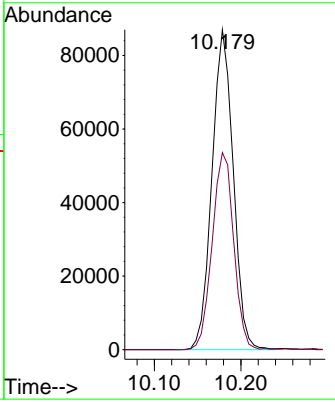
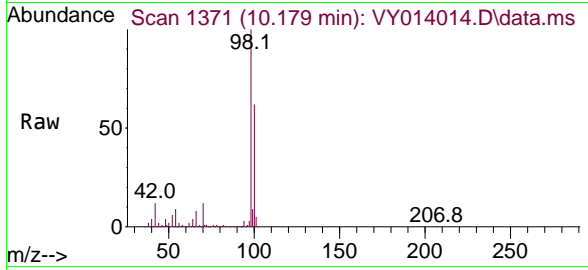




#50
 Toluene-d8
 Concen: 50.960 ug/l
 RT: 10.179 min Scan# 11
 Delta R.T. -0.000 min
 Lab File: VY014014.D
 Acq: 05 Jun 2023 17:53

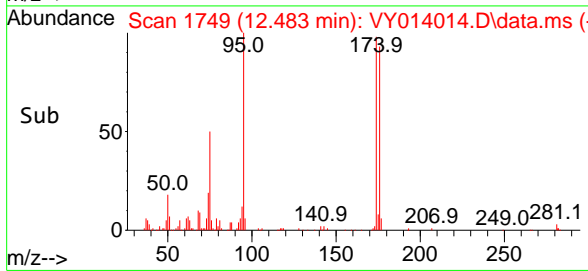
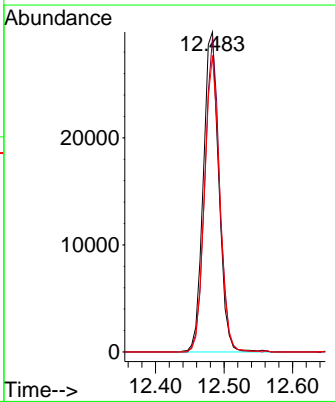
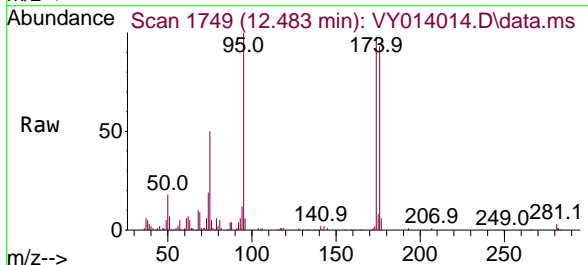
Instrument : MSVOA_Y
 ClientSampleId : 278

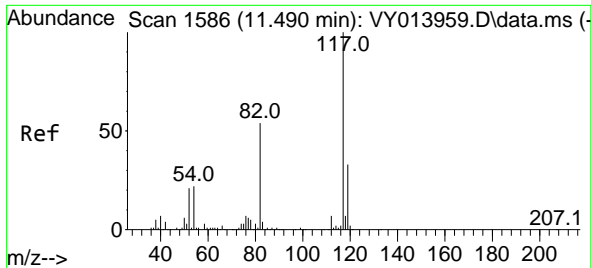
Tgt Ion: 98 Resp: 148195
 Ion Ratio Lower Upper
 98 100
 100 62.3 50.1 75.1



#62
 4-Bromofluorobenzene
 Concen: 47.398 ug/l
 RT: 12.483 min Scan# 1749
 Delta R.T. 0.006 min
 Lab File: VY014014.D
 Acq: 05 Jun 2023 17:53

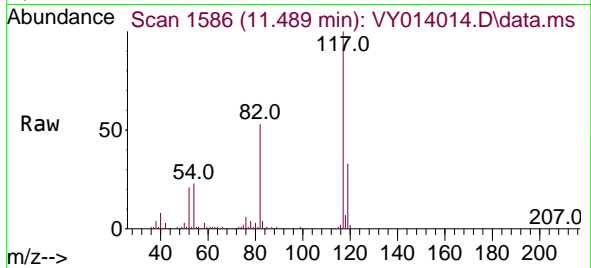
Tgt Ion: 95 Resp: 46991
 Ion Ratio Lower Upper
 95 100
 174 93.3 0.0 178.2
 176 90.7 0.0 173.8



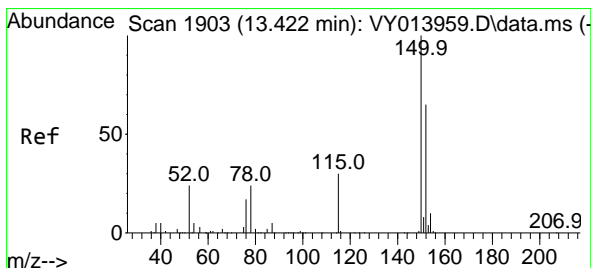
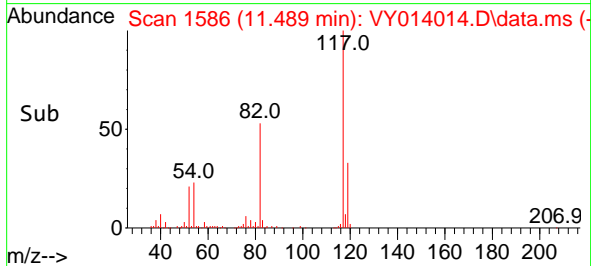
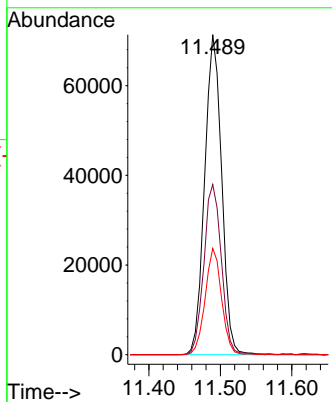


#63
 Chlorobenzene-d5
 Concen: 50.000 ug/l
 RT: 11.489 min Scan# 117840
 Delta R.T. -0.000 min
 Lab File: VY014014.D
 Acq: 05 Jun 2023 17:53

Instrument : MSVOA_Y
 ClientSampleId : 278



Tgt Ion	Resp	Lower	Upper
117	100		
82	53.2	43.4	65.0
119	33.2	26.3	39.5



#72
 1,4-Dichlorobenzene-d4
 Concen: 50.000 ug/l
 RT: 13.428 min Scan# 1904
 Delta R.T. 0.006 min
 Lab File: VY014014.D
 Acq: 05 Jun 2023 17:53

Tgt Ion	Resp	Lower	Upper
152	100		
115	55.4	28.8	86.5
150	156.4	0.0	348.8

