

Data Path : Z:\voasrv\HPCHEM1\MSVOA\_Y\Data\VY060524\  
 Data File : VY018491.D  
 Acq On : 05 Jun 2024 17:49  
 Operator : SY/MD  
 Sample : P2686-03  
 Misc : 4.62g/5.0mL/MSVOA\_Y/SOIL/B  
 ALS Vial : 16 Sample Multiplier: 1

Instrument :  
 MSVOA\_Y  
 ClientSampleId :

Quant Time: Jun 06 05:58:28 2024  
 Quant Method : Z:\voasrv\HPCHEM1\MSVOA\_Y\methods\82Y060324S.M  
 Quant Title : SW846 8260  
 QLast Update : Tue Jun 04 07:11:56 2024  
 Response via : Initial Calibration

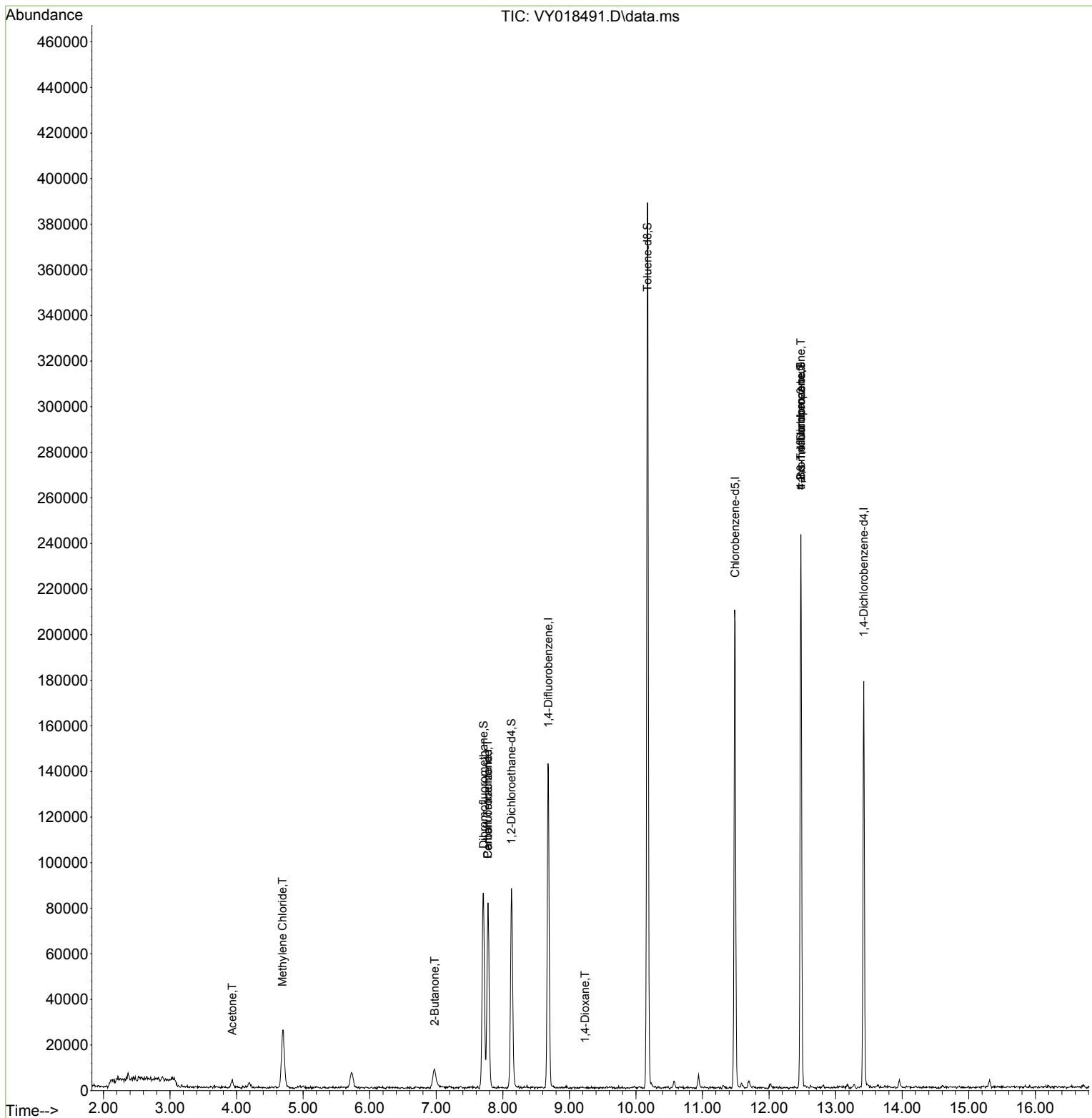
Compound	R.T.	QIon	Response	Conc	Units	Dev(Min)
-----						
Internal Standards						
1) Pentafluorobenzene	7.777	168	55184	50.000	ug/l	0.00
34) 1,4-Difluorobenzene	8.685	114	114651	50.000	ug/l	0.00
63) Chlorobenzene-d5	11.489	117	108117	50.000	ug/l	0.00
72) 1,4-Dichlorobenzene-d4	13.422	152	39763	50.000	ug/l	0.00
System Monitoring Compounds						
33) 1,2-Dichloroethane-d4	8.130	65	62862	58.005	ug/l	0.00
Spiked Amount	50.000	Range	50 - 163	Recovery	=	116.020%
35) Dibromofluoromethane	7.710	113	59895	41.197	ug/l	0.00
Spiked Amount	50.000	Range	54 - 147	Recovery	=	82.400%
50) Toluene-d8	10.173	98	241902	41.824	ug/l	0.00
Spiked Amount	50.000	Range	58 - 134	Recovery	=	83.640%
62) 4-Bromofluorobenzene	12.477	95	68361	37.961	ug/l	0.00
Spiked Amount	50.000	Range	30 - 143	Recovery	=	75.920%
Target Compounds						
					Qvalue	
11) Tert butyl alcohol	4.918	59	400	Below Cal	#	88
16) Acetone	3.936	43	4869	20.242	ug/l #	79
20) Methylene Chloride	4.692	84	17581	10.304	ug/l #	78
25) 2-Butanone	6.978	43	1082	2.936	ug/l #	72
38) Carbon Tetrachloride	7.777	117	6420	2.890	ug/l #	15
49) 1,4-Dioxane	9.234	88	19	1.661	ug/l #	20
76) 1,2,3-Trichloropropane	12.477	75	40178	81.486	ug/l #	100
81) trans-1,4-Dichloro-2-b...	12.477	75	40178	171.197	ug/l #	16
-----						

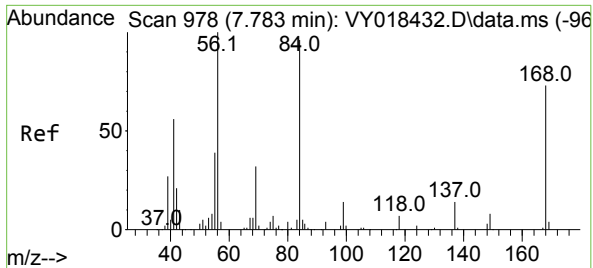
(#) = qualifier out of range (m) = manual integration (+) = signals summed

Data Path : Z:\voasrv\HPCHEM1\MSVOA\_Y\Data\VY060524\  
 Data File : VY018491.D  
 Acq On : 05 Jun 2024 17:49  
 Operator : SY/MD  
 Sample : P2686-03  
 Misc : 4.62g/5.0mL/MSVOA\_Y/SOIL/B  
 ALS Vial : 16 Sample Multiplier: 1

Instrument :  
 MSVOA\_Y  
 ClientSampleId :

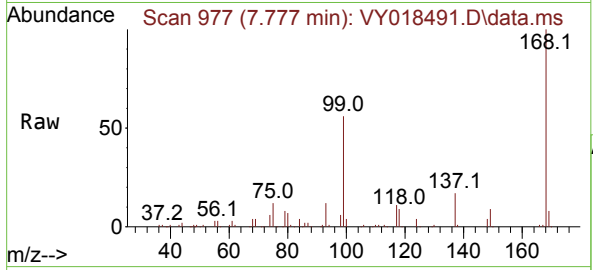
Quant Time: Jun 06 05:58:28 2024  
 Quant Method : Z:\voasrv\HPCHEM1\MSVOA\_Y\methods\82Y060324S.M  
 Quant Title : SW846 8260  
 QLast Update : Tue Jun 04 07:11:56 2024  
 Response via : Initial Calibration



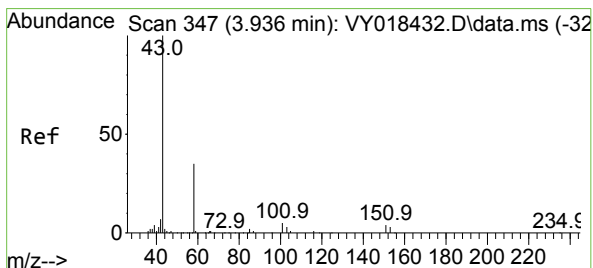
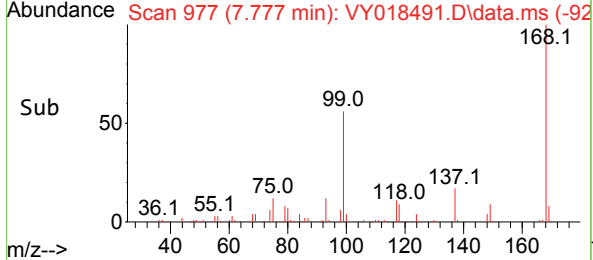
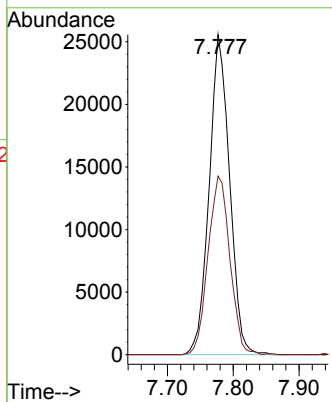


#1  
 Pentafluorobenzene  
 Concen: 50.000 ug/l  
 RT: 7.777 min Scan# 91  
 Delta R.T. -0.006 min  
 Lab File: VY018491.D  
 Acq: 05 Jun 2024 17:49

Instrument :  
 MSVOA\_Y  
 ClientSampled :

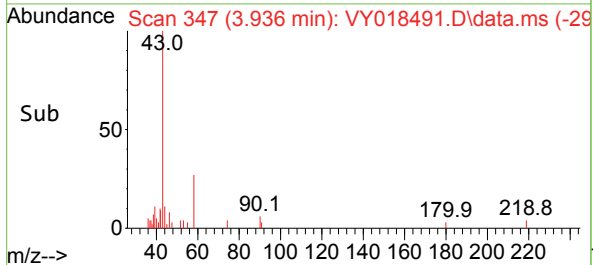
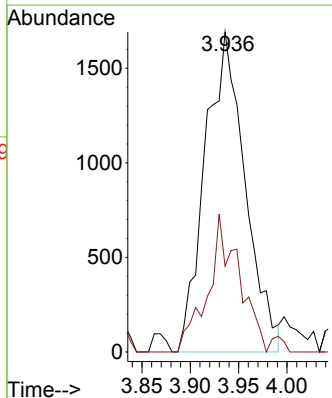
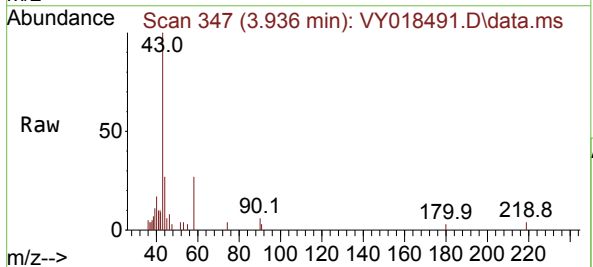


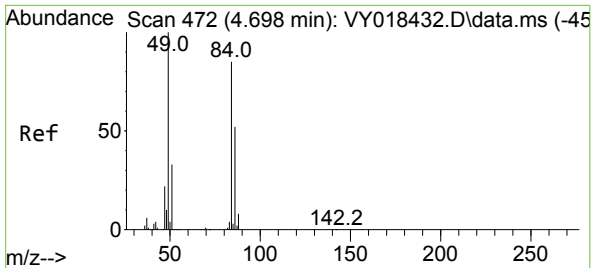
Tgt Ion:168 Resp: 55184  
 Ion Ratio Lower Upper  
 168 100  
 99 55.8 39.1 58.7



#16  
 Acetone  
 Concen: 20.242 ug/l  
 RT: 3.936 min Scan# 347  
 Delta R.T. 0.000 min  
 Lab File: VY018491.D  
 Acq: 05 Jun 2024 17:49

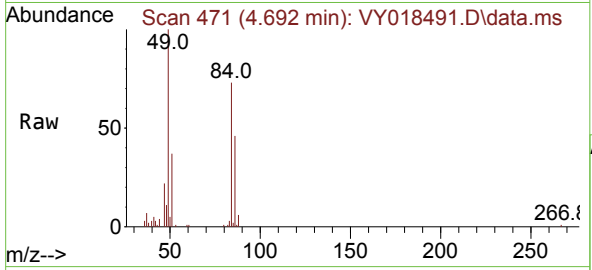
Tgt Ion: 43 Resp: 4869  
 Ion Ratio Lower Upper  
 43 100  
 58 26.8 31.7 47.5#





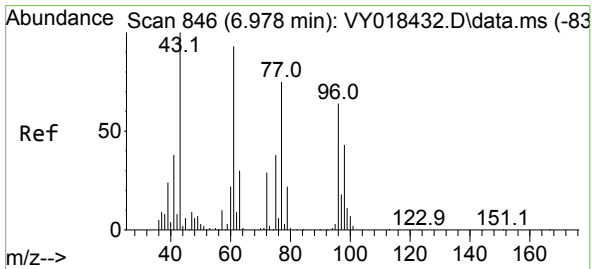
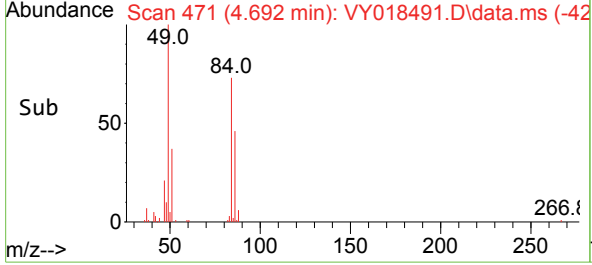
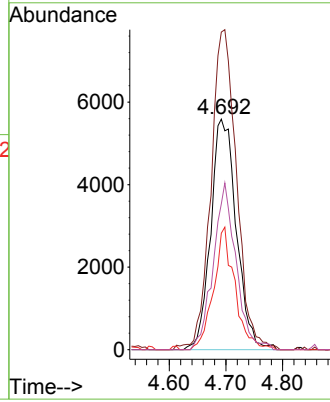
#20  
 Methylene Chloride  
 Concen: 10.304 ug/l  
 RT: 4.692 min Scan# 471  
 Delta R.T. -0.006 min  
 Lab File: VY018491.D  
 Acq: 05 Jun 2024 17:49

Instrument :  
 MSVOA\_Y  
 ClientSampleId :



Tgt Ion: 84 Resp: 17581

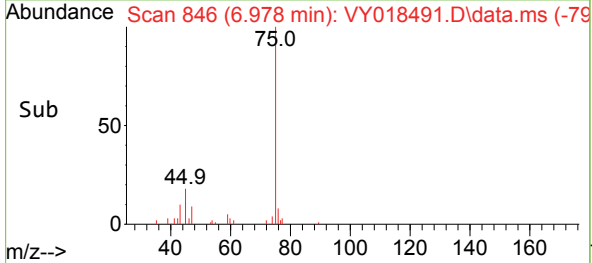
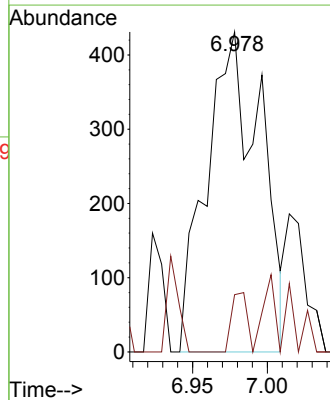
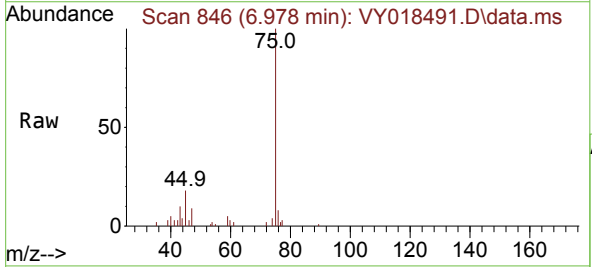
Ion	Ratio	Lower	Upper
84	100		
49	137.7	84.4	126.6#
51	50.5	26.0	39.0#
86	63.2	49.5	74.3

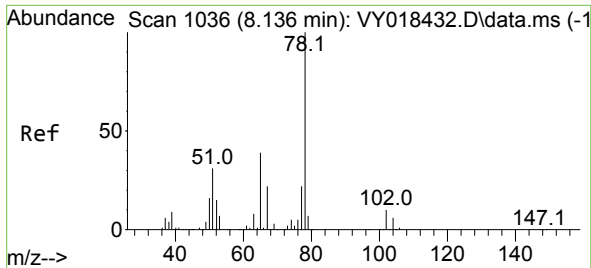


#25  
 2-Butanone  
 Concen: 2.936 ug/l  
 RT: 6.978 min Scan# 846  
 Delta R.T. 0.000 min  
 Lab File: VY018491.D  
 Acq: 05 Jun 2024 17:49

Tgt Ion: 43 Resp: 1082

Ion	Ratio	Lower	Upper
43	100		
72	17.9	27.3	40.9#

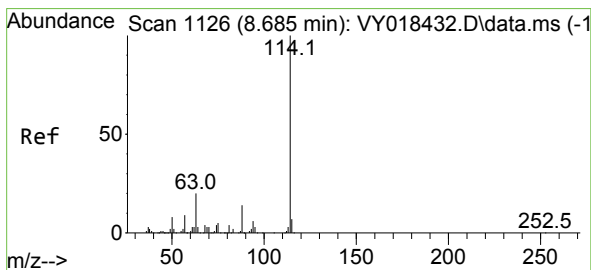
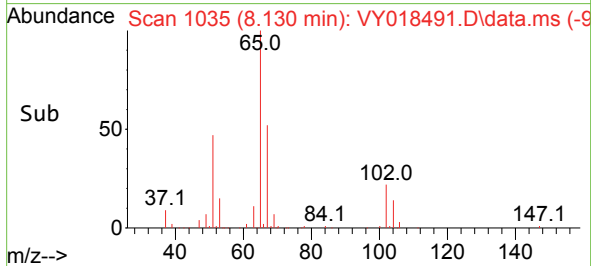
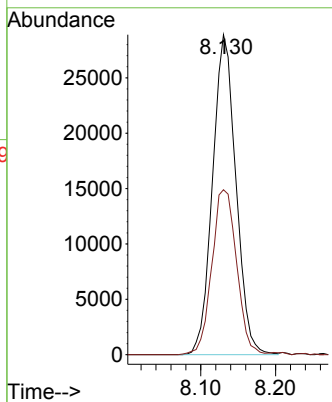
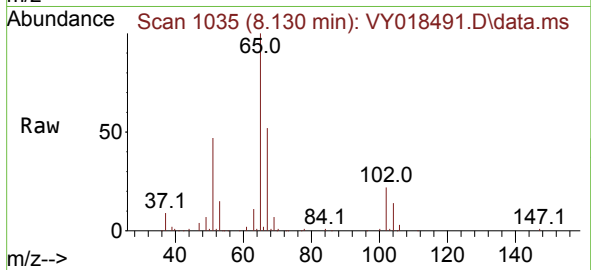




#33  
 1,2-Dichloroethane-d4  
 Concen: 58.005 ug/l  
 RT: 8.130 min Scan# 1035  
 Delta R.T. -0.006 min  
 Lab File: VY018491.D  
 Acq: 05 Jun 2024 17:49

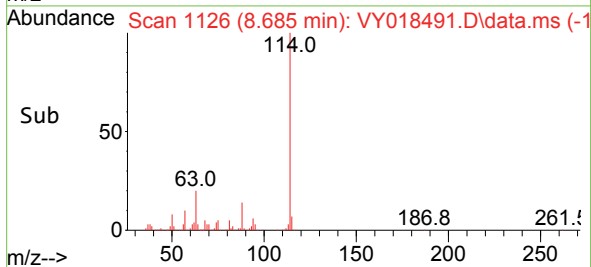
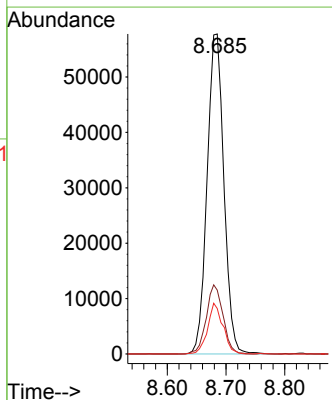
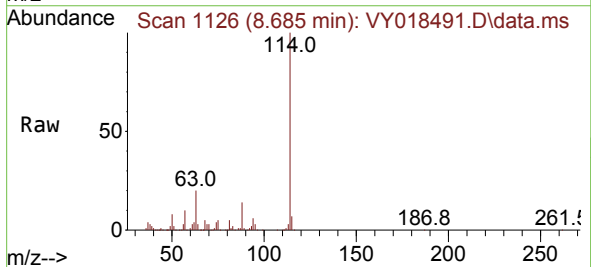
Instrument : MSVOA\_Y  
 ClientSampleId :

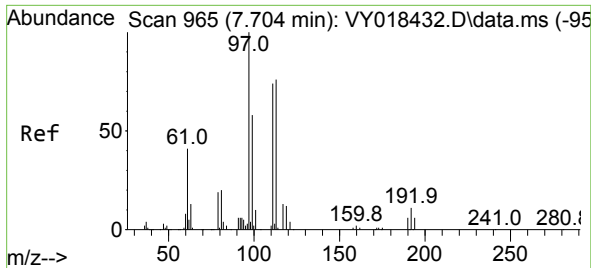
Tgt Ion: 65 Resp: 62862  
 Ion Ratio Lower Upper  
 65 100  
 67 54.6 0.0 109.6



#34  
 1,4-Difluorobenzene  
 Concen: 50.000 ug/l  
 RT: 8.685 min Scan# 1126  
 Delta R.T. 0.000 min  
 Lab File: VY018491.D  
 Acq: 05 Jun 2024 17:49

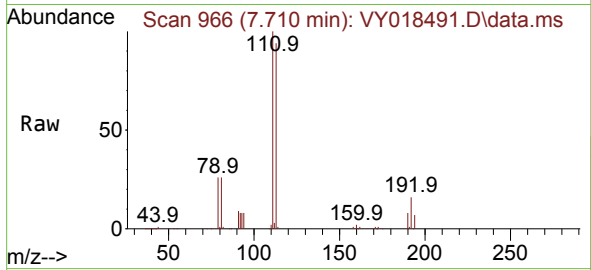
Tgt Ion:114 Resp: 114651  
 Ion Ratio Lower Upper  
 114 100  
 63 19.9 0.0 35.0  
 88 14.2 0.0 27.2



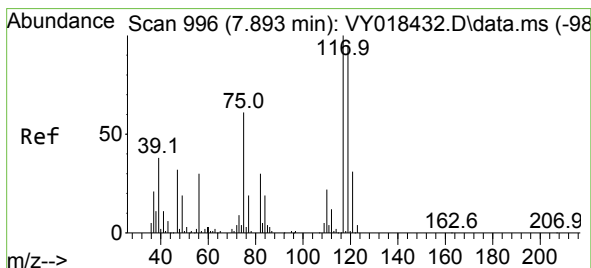
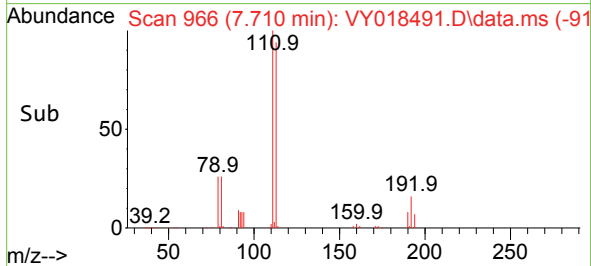
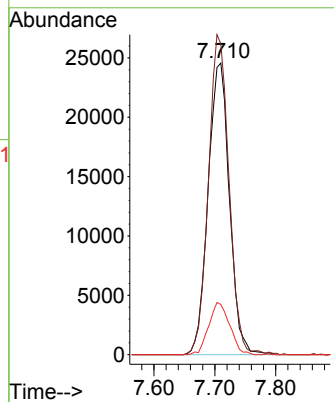


#35  
 Dibromofluoromethane  
 Concen: 41.197 ug/l  
 RT: 7.710 min Scan# 909  
 Delta R.T. 0.006 min  
 Lab File: VY018491.D  
 Acq: 05 Jun 2024 17:49

Instrument :  
 MSVOA\_Y  
 ClientSampleId :

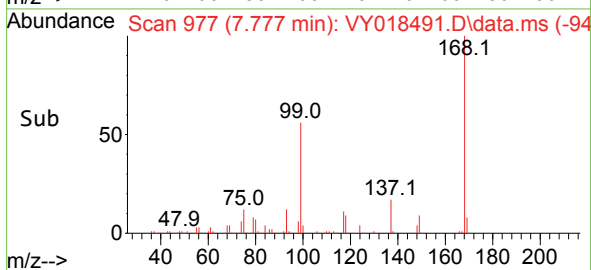
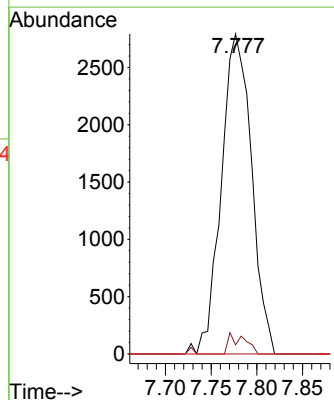
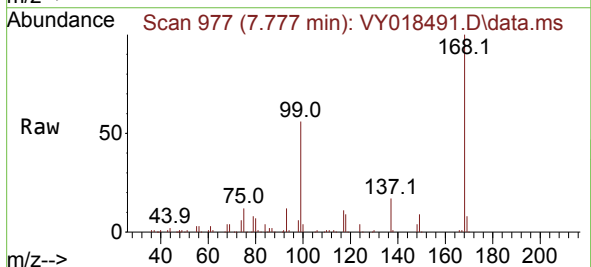


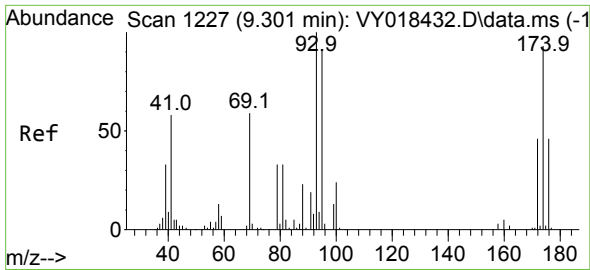
Tgt Ion:113 Resp: 59895  
 Ion Ratio Lower Upper  
 113 100  
 111 105.7 82.2 123.4  
 192 17.6 15.9 23.9



#38  
 Carbon Tetrachloride  
 Concen: 2.890 ug/l  
 RT: 7.777 min Scan# 977  
 Delta R.T. -0.116 min  
 Lab File: VY018491.D  
 Acq: 05 Jun 2024 17:49

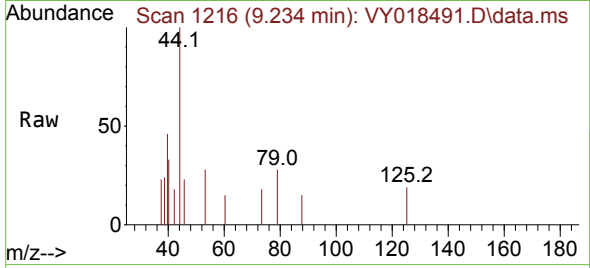
Tgt Ion:117 Resp: 6420  
 Ion Ratio Lower Upper  
 117 100  
 119 2.8 75.8 113.6#  
 121 0.0 24.0 36.0#



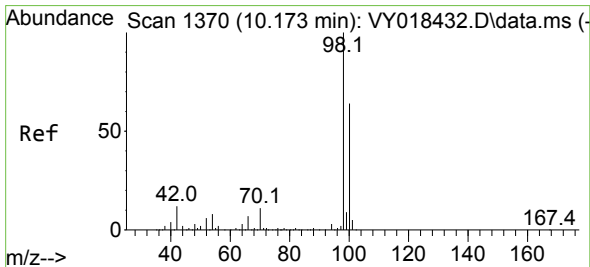
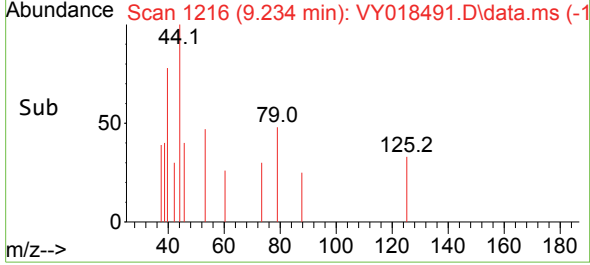
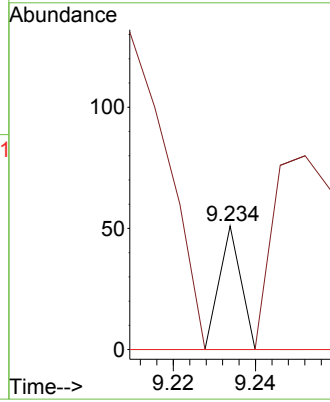


#49  
 1,4-Dioxane  
 Concen: 1.661 ug/l  
 RT: 9.234 min Scan# 11  
 Delta R.T. -0.067 min  
 Lab File: VY018491.D  
 Acq: 05 Jun 2024 17:49

Instrument :  
 MSVOA\_Y  
 ClientSampleId :

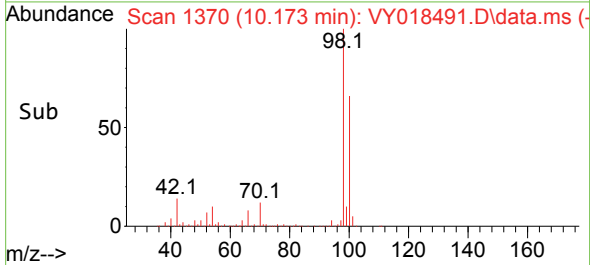
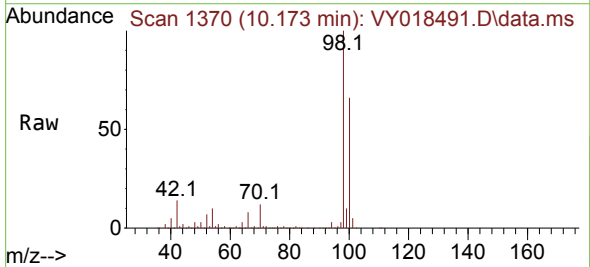
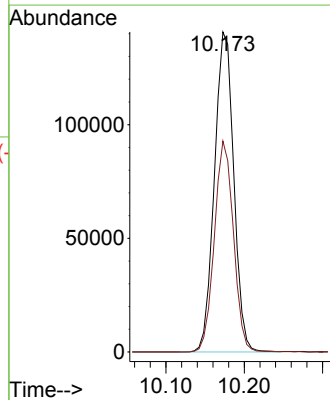


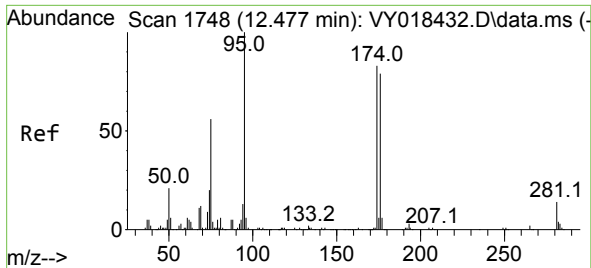
Tgt Ion: 88 Resp: 19  
 Ion Ratio Lower Upper  
 88 100  
 43 426.3 0.0 0.0#  
 58 0.0 49.3 73.9#



#50  
 Toluene-d8  
 Concen: 41.824 ug/l  
 RT: 10.173 min Scan# 1370  
 Delta R.T. 0.000 min  
 Lab File: VY018491.D  
 Acq: 05 Jun 2024 17:49

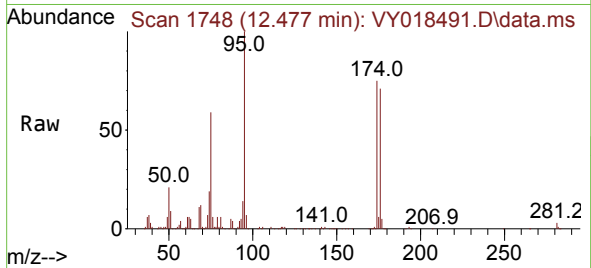
Tgt Ion: 98 Resp: 241902  
 Ion Ratio Lower Upper  
 98 100  
 100 65.0 52.0 78.0



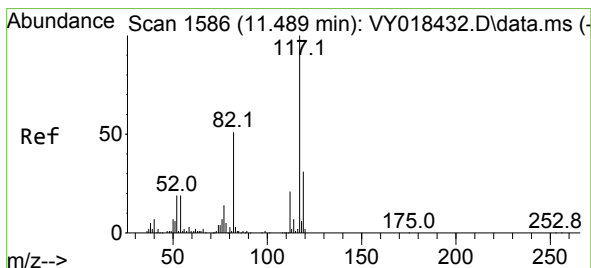
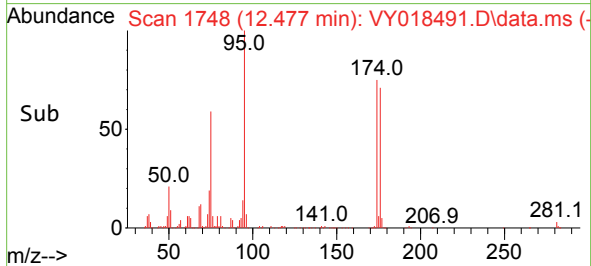
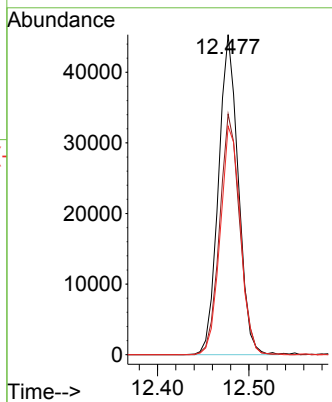


#62  
 4-Bromofluorobenzene  
 Concen: 37.961 ug/l  
 RT: 12.477 min Scan# 1  
 Delta R.T. 0.000 min  
 Lab File: VY018491.D  
 Acq: 05 Jun 2024 17:49

Instrument :  
 MSVOA\_Y  
 ClientSampleId :

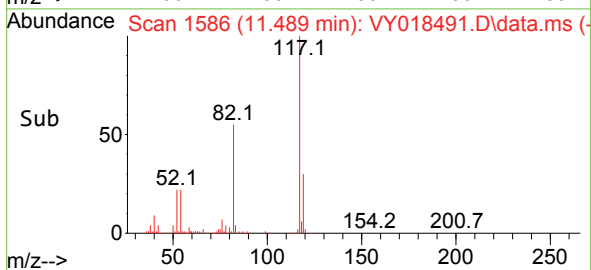
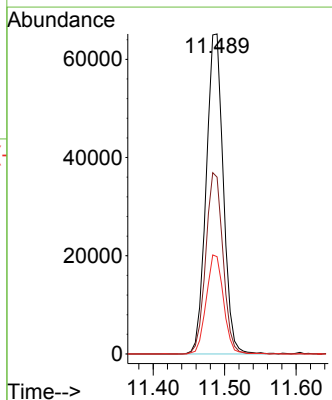
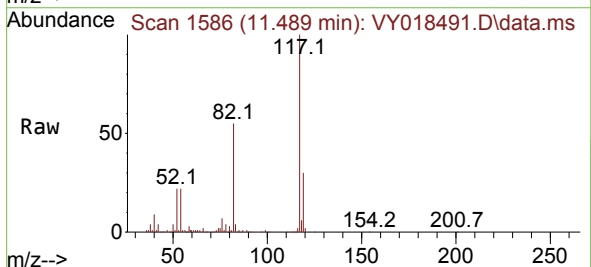


Tgt Ion: 95 Resp: 68361  
 Ion Ratio Lower Upper  
 95 100  
 174 76.1 0.0 175.6  
 176 72.7 0.0 171.4

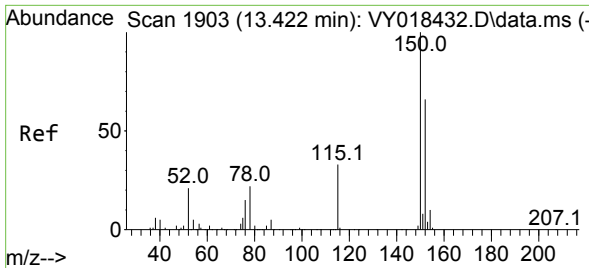


#63  
 Chlorobenzene-d5  
 Concen: 50.000 ug/l  
 RT: 11.489 min Scan# 1586  
 Delta R.T. 0.000 min  
 Lab File: VY018491.D  
 Acq: 05 Jun 2024 17:49

Tgt Ion: 117 Resp: 108117  
 Ion Ratio Lower Upper  
 117 100  
 82 55.2 42.4 63.6  
 119 30.4 25.9 38.9

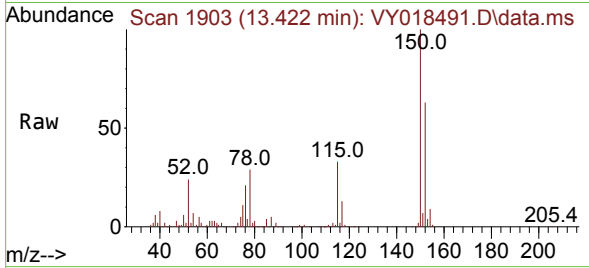




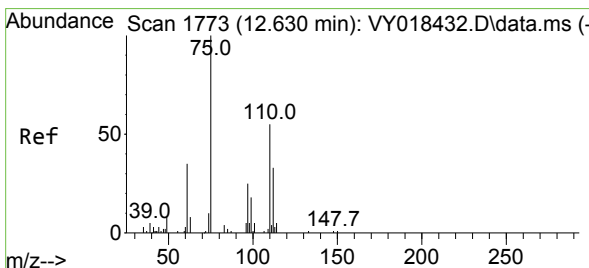
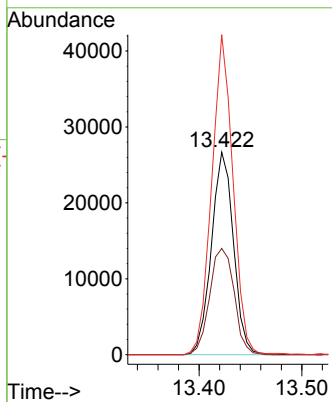
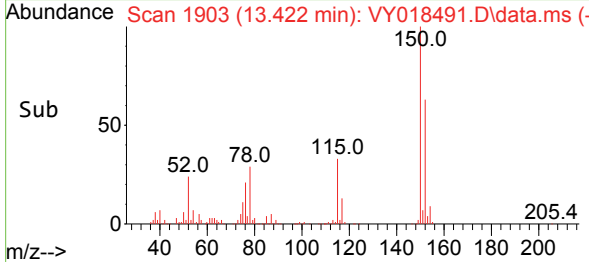


#72  
 1,4-Dichlorobenzene-d4  
 Concen: 50.000 ug/l  
 RT: 13.422 min Scan# 1903  
 Delta R.T. 0.000 min  
 Lab File: VY018491.D  
 Acq: 05 Jun 2024 17:49

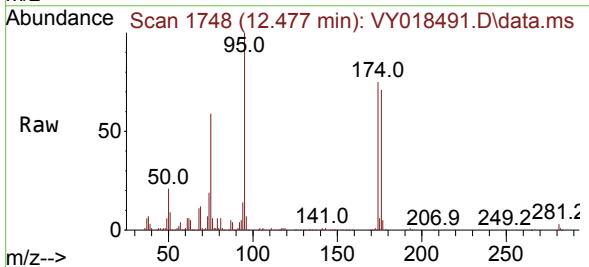
Instrument : MSVOA\_Y  
 ClientSampleId :



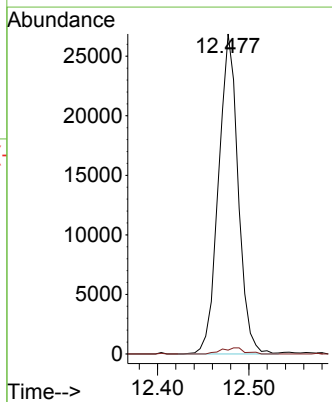
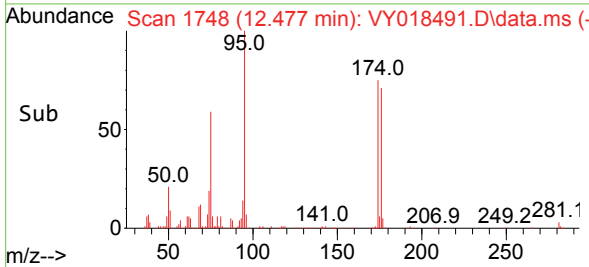
Tgt Ion:152 Resp: 39763  
 Ion Ratio Lower Upper  
 152 100  
 115 58.1 28.2 84.7  
 150 152.4 0.0 345.6

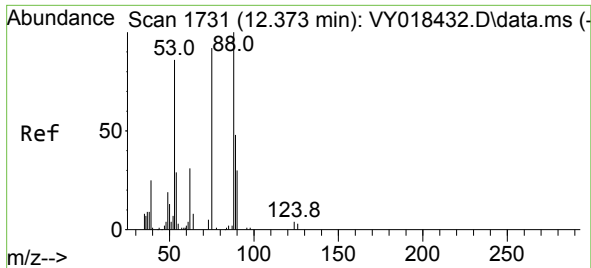


#76  
 1,2,3-Trichloropropane  
 Concen: 81.486 ug/l  
 RT: 12.477 min Scan# 1748  
 Delta R.T. -0.152 min  
 Lab File: VY018491.D  
 Acq: 05 Jun 2024 17:49



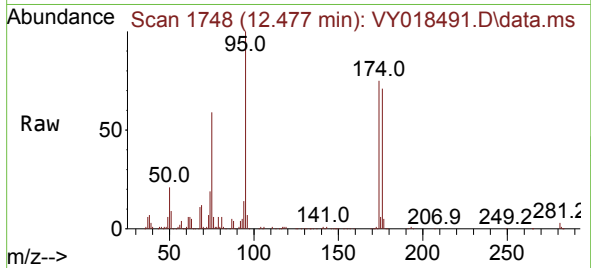
Tgt Ion: 75 Resp: 40178  
 Ion Ratio Lower Upper  
 75 100  
 77 2.2 0.0 0.0#





#81  
 trans-1,4-Dichloro-2-butene  
 Concen: 171.197 ug/l  
 RT: 12.477 min Scan# 11  
 Delta R.T. 0.104 min  
 Lab File: VY018491.D  
 Acq: 05 Jun 2024 17:49

Instrument :  
 MSVOA\_Y  
 ClientSampleId :



Tgt Ion: 75 Resp: 40178

Ion	Ratio	Lower	Upper
75	100		
53	0.0	66.8	100.2#
89	0.4	35.8	53.6#

