

Data Path : Z:\voasrv\HPCHEM1\MSVOA\_Y\Data\vy060921\  
 Data File : VY005059.D  
 Acq On : 09 Jun 2021 20:10  
 Operator : SY/MD  
 Sample : M2644-01  
 Misc : 1.05G/5ML/MSVOA\_Y/SOIL  
 ALS Vial : 22 Sample Multiplier: 1

Instrument :  
 MSVOA\_Y  
 ClientSampled :  
 1846-75-76

Integration Parameters: RTEINT.P

Integrator: RTE  
 Smoothing : ON Filtering: 5  
 Sampling : 1 Min Area: 3 % of largest Peak  
 Start Thrs: 0.2 Max Peaks: 100  
 Stop Thrs : 0 Peak Location: TOP

If leading or trailing edge < 100 prefer < Baseline drop else tangent >  
 Peak separation: 5

Method : Z:\voasrv\HPCHEM1\MSVOA\_Y\methods\82Y060221S.M  
 Title : SW846 8260

Signal : TIC: VY005059.D\data.ms

peak #	R.T. min	first scan	max scan	last scan	PK TY	peak height	corr. area	corr. % max.	% of total
1	7.728	958	969	973	rBV	111950	287181	2.07%	0.449%
2	7.795	973	980	988	rVV2	242370	683908	4.92%	1.069%
3	8.008	1004	1015	1028	rBV	139248	332263	2.39%	0.519%
4	8.149	1028	1038	1050	rVB2	110021	270587	1.95%	0.423%
5	8.331	1061	1068	1078	rVB3	251392	704739	5.07%	1.102%
6	8.551	1094	1104	1117	rVB	151021	315692	2.27%	0.494%
7	8.697	1119	1128	1135	rBV	332755	660229	4.75%	1.032%
8	9.191	1193	1209	1214	rBV2	158455	383147	2.76%	0.599%
9	9.618	1272	1279	1291	rVB	207109	416787	3.00%	0.652%
10	9.752	1291	1301	1308	rBV	243841	523662	3.77%	0.819%
11	9.825	1308	1313	1317	rBV	77255	142589	1.03%	0.223%
12	9.959	1325	1335	1346	rBV	93053	224936	1.62%	0.352%
13	10.185	1365	1372	1376	rBV	515555	884264	6.36%	1.382%
14	10.246	1376	1382	1390	rVB	8181000	13899980	100.00%	21.732%
15	10.374	1395	1403	1409	rVB	118117	233670	1.68%	0.365%
16	11.282	1544	1552	1563	rVB7	95833	255136	1.84%	0.399%
17	11.496	1580	1587	1596	rBV	376100	626991	4.51%	0.980%
18	11.593	1596	1603	1612	rBV	1076187	1719844	12.37%	2.689%
19	11.703	1612	1621	1631	rBV	3125637	5727101	41.20%	8.954%
20	12.032	1663	1675	1683	rBV	1836990	3038008	21.86%	4.750%
21	12.245	1706	1710	1715	rVB3	82959	144833	1.04%	0.226%
22	12.331	1719	1724	1729	rBV	134893	226943	1.63%	0.355%
23	12.416	1729	1738	1740	rBV4	71529	147900	1.06%	0.231%
24	12.489	1745	1750	1754	rBV2	294058	483197	3.48%	0.755%
25	12.672	1773	1780	1785	rVB	352576	537338	3.87%	0.840%
26	12.739	1785	1791	1794	rVV	1197883	1930470	13.89%	3.018%
27	12.770	1794	1796	1799	rVV	538970	726647	5.23%	1.136%
28	12.812	1799	1803	1808	rVV2	992584	1624628	11.69%	2.540%
29	12.977	1822	1830	1837	rBV	590613	1018776	7.33%	1.593%
30	13.044	1837	1841	1847	rVB2	144218	224268	1.61%	0.351%
31	13.123	1847	1854	1859	rBV	2273854	3344832	24.06%	5.229%
32	13.251	1867	1875	1880	rBV4	95834	203784	1.47%	0.319%
33	13.318	1880	1886	1890	rVV2	212190	346972	2.50%	0.542%
34	13.367	1890	1894	1897	rVV3	116344	159094	1.14%	0.249%
35	13.428	1897	1904	1906	rVV2	357905	598311	4.30%	0.935%
36	13.459	1906	1909	1914	rVB	815089	1136114	8.17%	1.776%

Data Path : Z:\voasrv\HPCHEM1\MSVOA\_Y\Data\vy060921\  
 Data File : VY005059.D  
 Acq On : 09 Jun 2021 20:10  
 Operator : SY/MD  
 Sample : M2644-01  
 Misc : 1.05G/5ML/MSVOA\_Y/SOIL  
 ALS Vial : 22 Sample Multiplier: 1

Instrument :  
 MSVOA\_Y  
 ClientSampleId :  
 1846-75-76

Integration Parameters: RTEINT.P

Integrator: RTE  
 Smoothing : ON Filtering: 5  
 Sampling : 1 Min Area: 3 % of largest Peak  
 Start Thrs: 0.2 Max Peaks: 100  
 Stop Thrs : 0 Peak Location: TOP

If leading or trailing edge < 100 prefer < Baseline drop else tangent >  
 Peak separation: 5

Method : Z:\voasrv\HPCHEM1\MSVOA\_Y\methods\82Y060221S.M  
 Title : SW846 8260

37	13.629	1932	1937	1940	rBV2	754257	1031830	7.42%	1.613%
38	13.666	1940	1943	1952	rVB3	491013	1002765	7.21%	1.568%
39	13.751	1952	1957	1962	rBV2	555998	837293	6.02%	1.309%
40	13.824	1962	1969	1975	rBV	236651	361956	2.60%	0.566%
41	13.885	1975	1979	1982	rBV	333788	528649	3.80%	0.827%
42	13.916	1982	1984	1989	rVB	378634	462712	3.33%	0.723%
43	13.971	1989	1993	1998	rVB	610859	913716	6.57%	1.429%
44	14.080	2006	2011	2016	rVB	464524	716979	5.16%	1.121%
45	14.160	2016	2024	2028	rBV4	158180	331552	2.39%	0.518%
46	14.215	2028	2033	2037	rBV	256489	406287	2.92%	0.635%
47	14.257	2037	2040	2043	rVV4	98520	180167	1.30%	0.282%
48	14.300	2043	2047	2050	rVV	398996	643659	4.63%	1.006%
49	14.336	2050	2053	2057	rVV	692205	906405	6.52%	1.417%
50	14.404	2057	2064	2074	rVB2	470363	1101449	7.92%	1.722%
51	14.519	2079	2083	2087	rVB	117375	151883	1.09%	0.237%
52	14.568	2087	2091	2095	rBV	434411	678022	4.88%	1.060%
53	14.611	2095	2098	2103	rVB2	456697	641291	4.61%	1.003%
54	14.684	2103	2110	2116	rBV4	922233	2094801	15.07%	3.275%
55	14.739	2116	2119	2125	rVB2	204776	331098	2.38%	0.518%
56	14.836	2125	2135	2143	rBV	521037	880300	6.33%	1.376%
57	14.946	2148	2153	2157	rBV3	209423	369465	2.66%	0.578%
58	15.056	2165	2171	2175	rBV3	194808	386969	2.78%	0.605%
59	15.105	2175	2179	2190	rVB3	157830	394211	2.84%	0.616%
60	15.239	2191	2201	2206	rBV	588251	1132192	8.15%	1.770%
61	15.294	2206	2210	2214	rVV	159863	241259	1.74%	0.377%
62	15.349	2214	2219	2226	rVV3	136374	376847	2.71%	0.589%
63	15.434	2230	2233	2242	rVB2	163122	277205	1.99%	0.433%
64	15.531	2242	2249	2256	rBV3	129592	280170	2.02%	0.438%
65	15.696	2267	2276	2277	rBV3	91799	173844	1.25%	0.272%
66	15.726	2277	2281	2291	rVB	302071	564191	4.06%	0.882%
67	15.891	2302	2308	2323	rVB3	77324	208315	1.50%	0.326%
68	16.037	2323	2332	2338	rBV3	174542	422059	3.04%	0.660%
69	16.232	2357	2364	2369	rBV2	96040	193442	1.39%	0.302%
70	16.293	2369	2374	2381	rVB	178591	331539	2.39%	0.518%
71	16.489	2400	2406	2413	rBV3	95240	222699	1.60%	0.348%

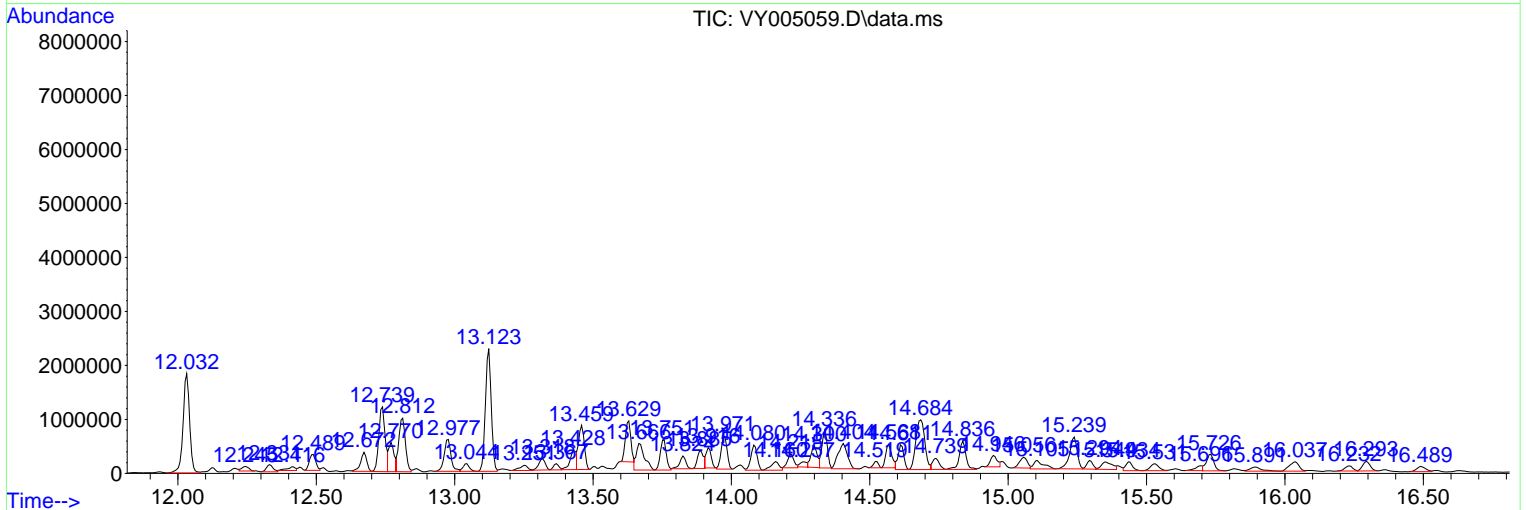
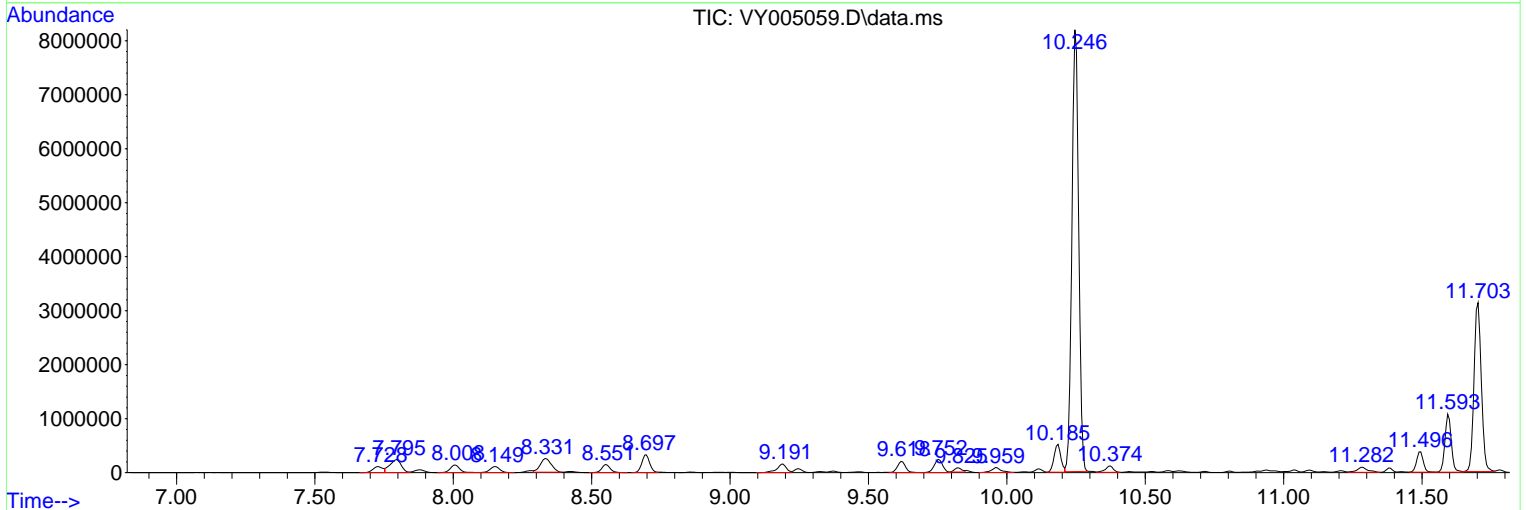
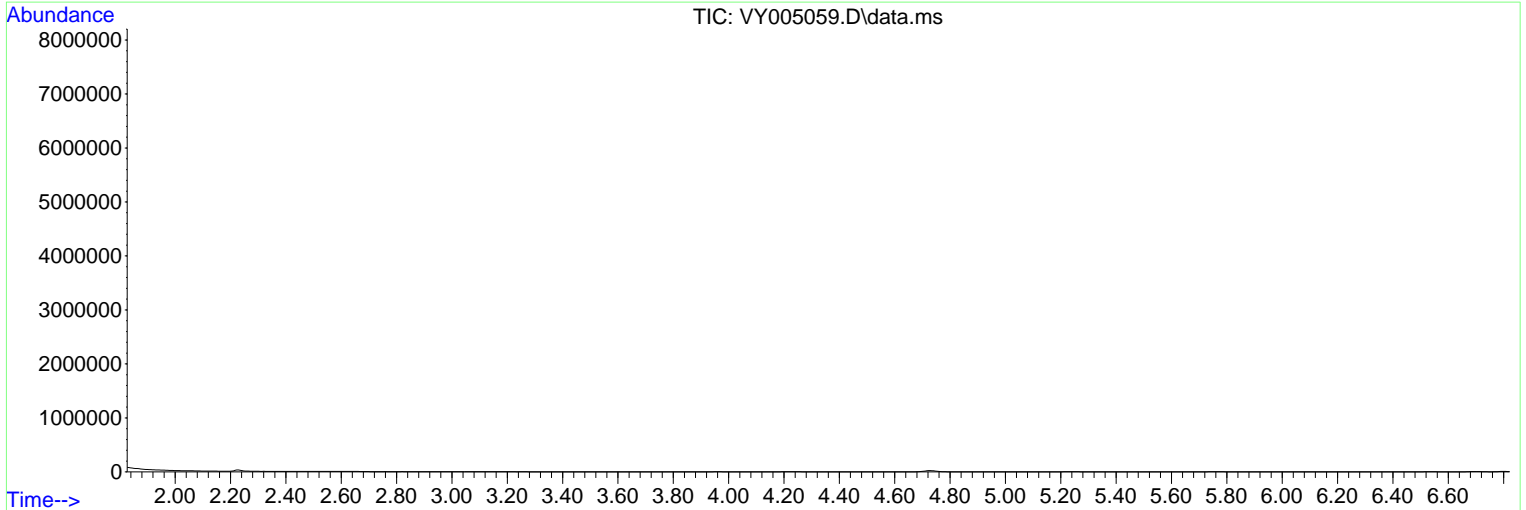
Sum of corrected areas: 63962042

Data Path : Z:\voasrv\HPCHEM1\MSVOA\_Y\Data\vy060921\  
 Data File : VY005059.D  
 Acq On : 09 Jun 2021 20:10  
 Operator : SY/MD  
 Sample : M2644-01  
 Misc : 1.05G/5ML/MSVOA\_Y/SOIL  
 ALS Vial : 22 Sample Multiplier: 1

Instrument :  
 MSVOA\_Y  
 ClientSampleId :  
 1846-75-76

Quant Method : Z:\voasrv\HPCHEM1\MSVOA\_Y\methods\82Y060221S.M  
 Quant Title : SW846 8260

TIC Library : C:\DATABASE\NIST11.L  
 TIC Integration Parameters: LSCINT.P



Data Path : Z:\voasrv\HPCHEM1\MSVOA\_Y\Data\vy060921\  
 Data File : VY005059.D  
 Acq On : 09 Jun 2021 20:10  
 Operator : SY/MD  
 Sample : M2644-01  
 Misc : 1.05G/5ML/MSVOA\_Y/SOIL  
 ALS Vial : 22 Sample Multiplier: 1

Instrument :  
 MSVOA\_Y  
 ClientSampled :  
 1846-75-76

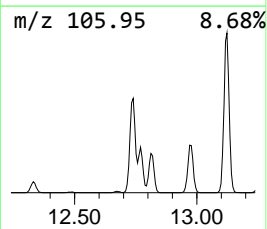
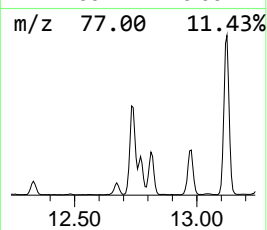
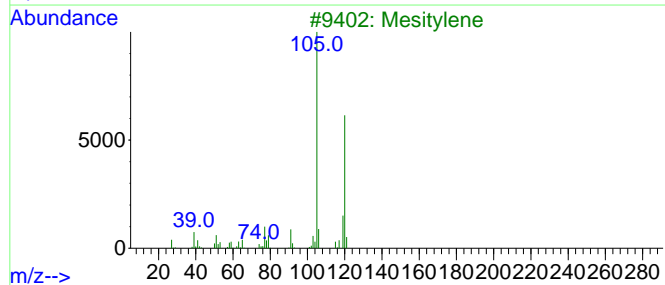
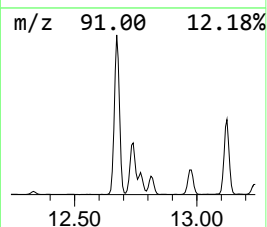
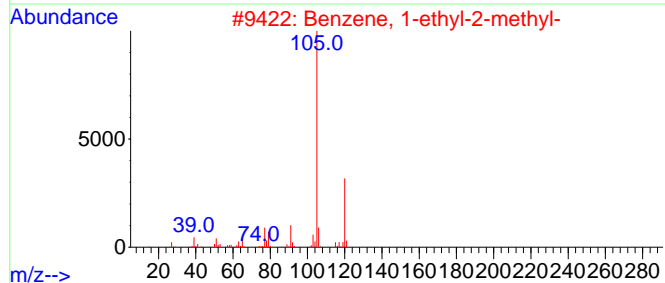
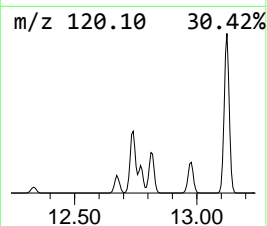
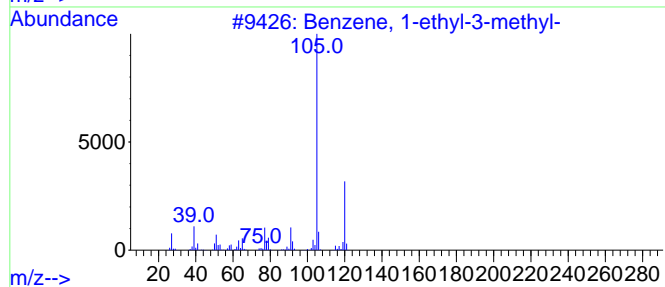
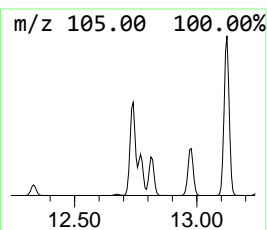
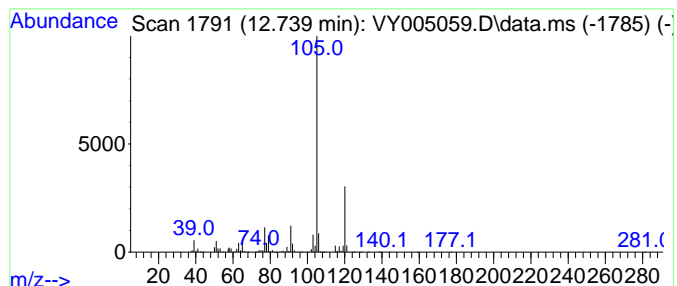
Quant Method : Z:\voasrv\HPCHEM1\MSVOA\_Y\methods\82Y060221S.M  
 Quant Title : SW846 8260

TIC Library : C:\DATABASE\NIST11.L  
 TIC Integration Parameters: LSCINT.P

\*\*\*\*\*  
 Peak Number 1 Benzene, 1-ethyl-3-methyl- Concentration Rank 2

R.T.	EstConc	Area	Relative to ISTD	R.T.
12.739	161.33 ug/l	1930470	1,4-Dichlorobenzene-d4	13.428

Hit#	of 5	Tentative ID	MW	MolForm	CAS#	Qual
1		Benzene, 1-ethyl-3-methyl-	120	C9H12	000620-14-4	95
2		Benzene, 1-ethyl-2-methyl-	120	C9H12	000611-14-3	95
3		Mesitylene	120	C9H12	000108-67-8	91
4		Benzene, 1-ethyl-4-methyl-	120	C9H12	000622-96-8	91
5		Benzene, 1,2,4-trimethyl-	120	C9H12	000095-63-6	91



Data Path : Z:\voasrv\HPCHEM1\MSVOA\_Y\Data\vy060921\  
 Data File : VY005059.D  
 Acq On : 09 Jun 2021 20:10  
 Operator : SY/MD  
 Sample : M2644-01  
 Misc : 1.05G/5ML/MSVOA\_Y/SOIL  
 ALS Vial : 22 Sample Multiplier: 1

Instrument :  
 MSVOA\_Y  
 ClientSampleID :  
 1846-75-76

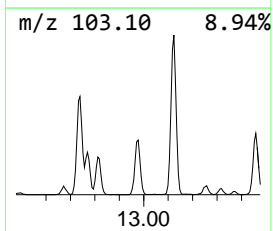
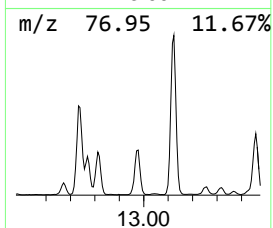
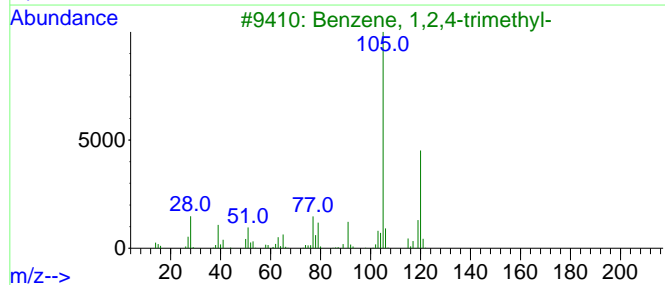
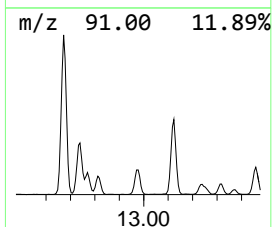
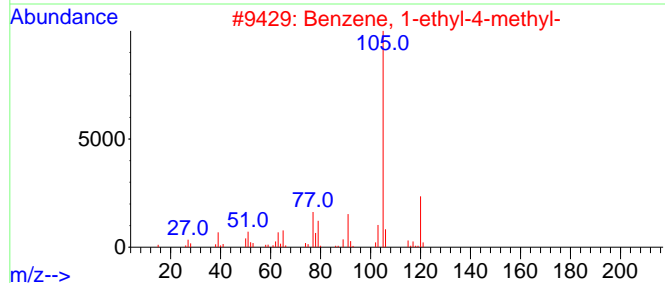
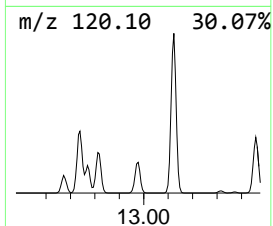
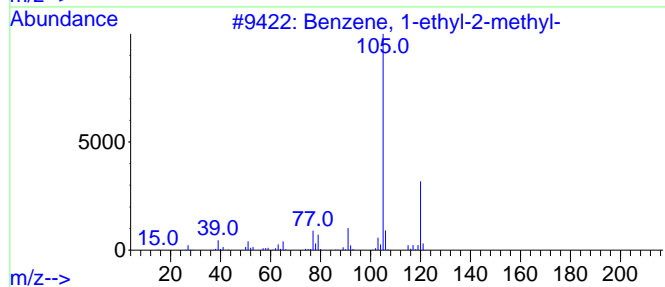
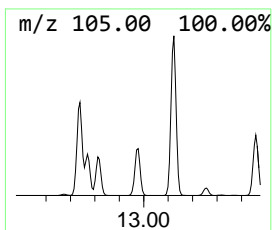
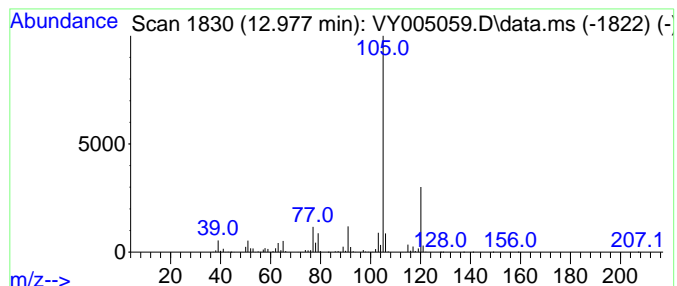
Quant Method : Z:\voasrv\HPCHEM1\MSVOA\_Y\methods\82Y060221S.M  
 Quant Title : SW846 8260

TIC Library : C:\DATABASE\NIST11.L  
 TIC Integration Parameters: LSCINT.P

\*\*\*\*\*  
 Peak Number 2 Benzene, 1-ethyl-2-methyl- Concentration Rank 6

R.T.	EstConc	Area	Relative to ISTD	R.T.
12.977	85.14 ug/l	1018780	1,4-Dichlorobenzene-d4	13.428

Hit#	of	5	Tentative ID	MW	MolForm	CAS#	Qual
1			Benzene, 1-ethyl-2-methyl-	120	C9H12	000611-14-3	93
2			Benzene, 1-ethyl-4-methyl-	120	C9H12	000622-96-8	93
3			Benzene, 1,2,4-trimethyl-	120	C9H12	000095-63-6	90
4			Mesitylene	120	C9H12	000108-67-8	90
5			Benzene, 1,2,3-trimethyl-	120	C9H12	000526-73-8	90



Data Path : Z:\voasrv\HPCHEM1\MSVOA\_Y\Data\vy060921\  
 Data File : VY005059.D  
 Acq On : 09 Jun 2021 20:10  
 Operator : SY/MD  
 Sample : M2644-01  
 Misc : 1.05G/5ML/MSVOA\_Y/SOIL  
 ALS Vial : 22 Sample Multiplier: 1

Instrument :  
 MSVOA\_Y  
 ClientSampled :  
 1846-75-76

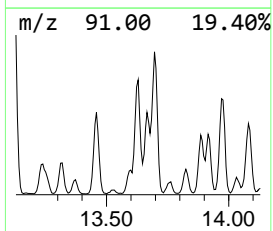
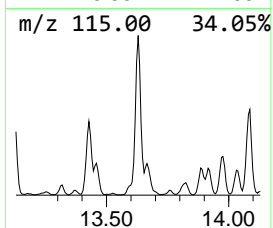
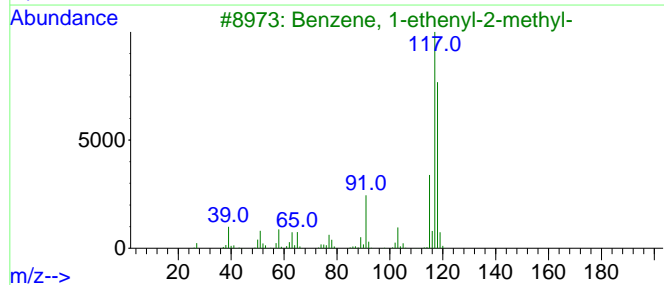
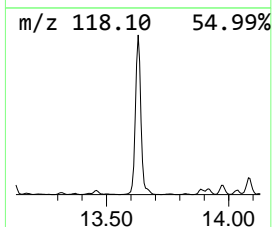
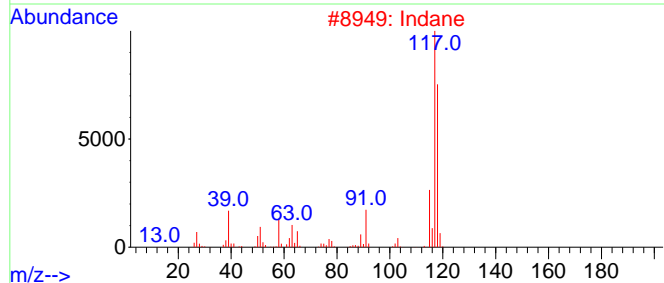
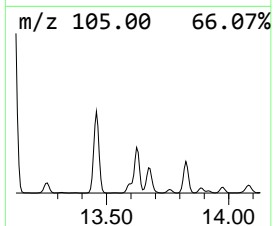
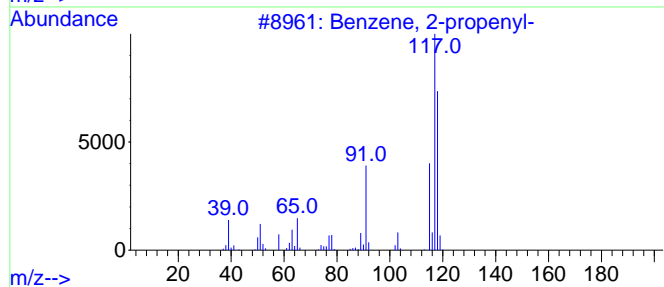
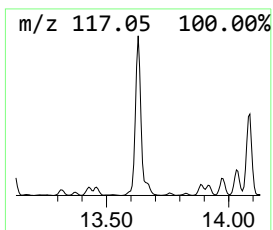
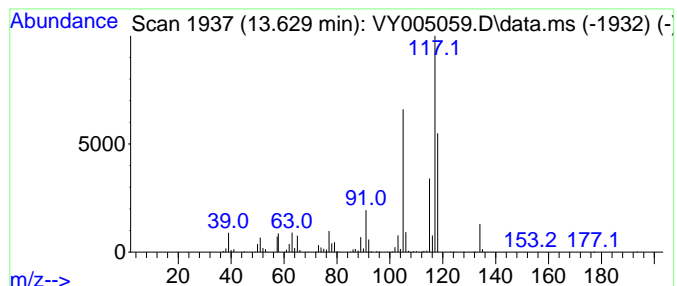
Quant Method : Z:\voasrv\HPCHEM1\MSVOA\_Y\methods\82Y060221S.M  
 Quant Title : SW846 8260

TIC Library : C:\DATABASE\NIST11.L  
 TIC Integration Parameters: LSCINT.P

\*\*\*\*\*  
 Peak Number 3 Benzene, 2-propenyl- Concentration Rank 5

R.T.	EstConc	Area	Relative to ISTD	R.T.
13.629	86.23 ug/l	1031830	1,4-Dichlorobenzene-d4	13.428

Hit#	of	Tentative ID	MW	MolForm	CAS#	Qual
1	5	Benzene, 2-propenyl-	118	C9H10	000300-57-2	70
2		Indane	118	C9H10	000496-11-7	70
3		Benzene, 1-ethenyl-2-methyl-	118	C9H10	000611-15-4	70
4		Benzene, cyclopropyl-	118	C9H10	000873-49-4	70
5		Tetracyclo[3.3.1.0(2,8).0(4,6)]-...	118	C9H10	1000191-13-7	62



Data Path : Z:\voasrv\HPCHEM1\MSVOA\_Y\Data\vy060921\  
 Data File : VY005059.D  
 Acq On : 09 Jun 2021 20:10  
 Operator : SY/MD  
 Sample : M2644-01  
 Misc : 1.05G/5ML/MSVOA\_Y/SOIL  
 ALS Vial : 22 Sample Multiplier: 1

Instrument :  
 MSVOA\_Y  
 ClientSampleID :  
 1846-75-76

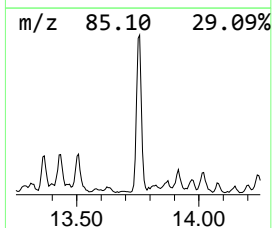
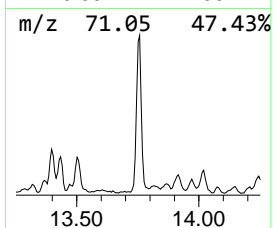
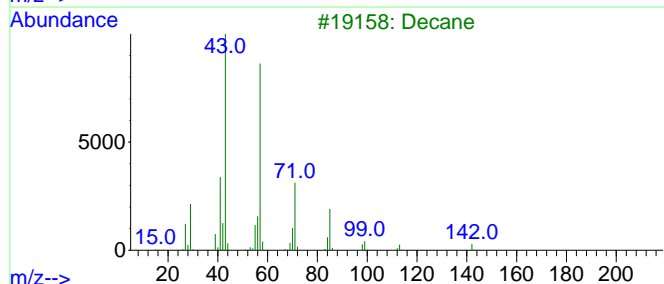
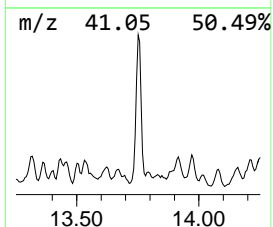
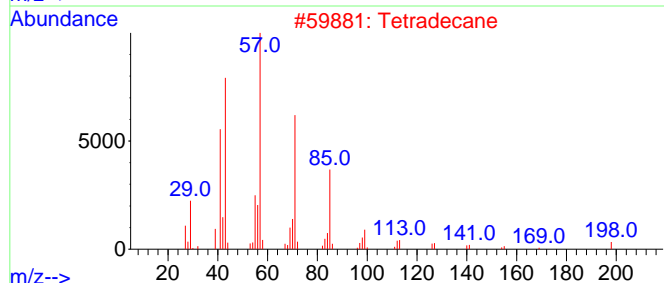
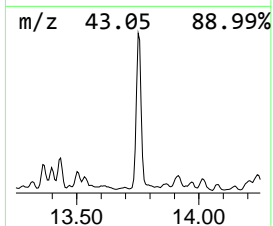
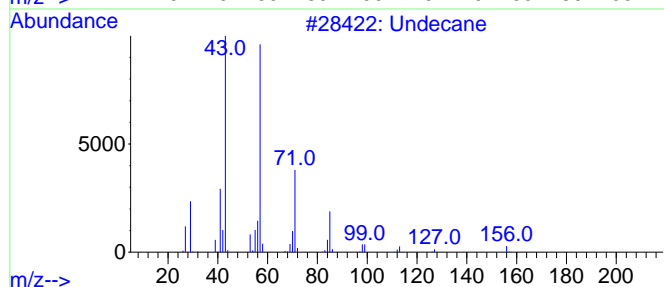
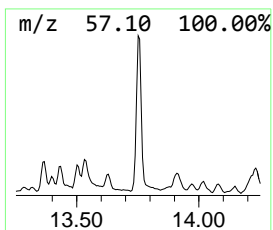
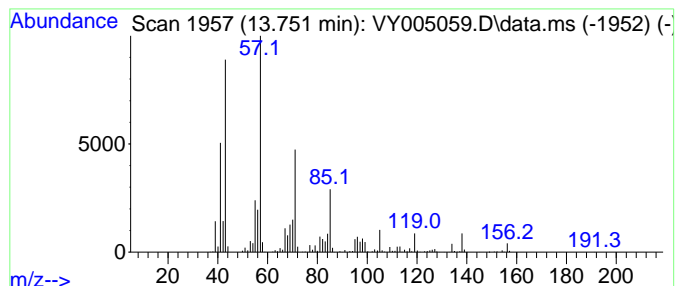
Quant Method : Z:\voasrv\HPCHEM1\MSVOA\_Y\methods\82Y060221S.M  
 Quant Title : SW846 8260

TIC Library : C:\DATABASE\NIST11.L  
 TIC Integration Parameters: LSCINT.P

\*\*\*\*\*  
 Peak Number 4 Undecane Concentration Rank 10

R.T.	EstConc	Area	Relative to ISTD	R.T.
13.751	69.97 ug/l	837293	1,4-Dichlorobenzene-d4	13.428

Hit#	of	5	Tentative ID	MW	MolForm	CAS#	Qual
1			Undecane	156	C11H24	001120-21-4	81
2			Tetradecane	198	C14H30	000629-59-4	64
3			Decane	142	C10H22	000124-18-5	64
4			Sulfurous acid, hexyl octyl ester	278	C14H30O3S	1000309-13-0	59
5			Silane, trichlorooctadecyl-	386	C18H37Cl3Si	000112-04-9	59



Data Path : Z:\voasrv\HPCHEM1\MSVOA\_Y\Data\vy060921\  
 Data File : VY005059.D  
 Acq On : 09 Jun 2021 20:10  
 Operator : SY/MD  
 Sample : M2644-01  
 Misc : 1.05G/5ML/MSVOA\_Y/SOIL  
 ALS Vial : 22 Sample Multiplier: 1

Instrument :  
 MSVOA\_Y  
 ClientSampled :  
 1846-75-76

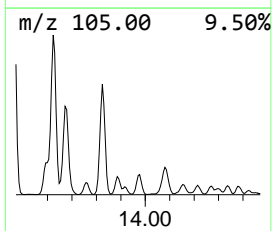
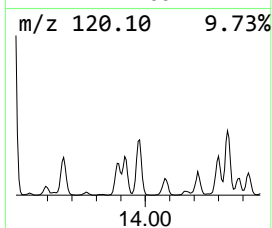
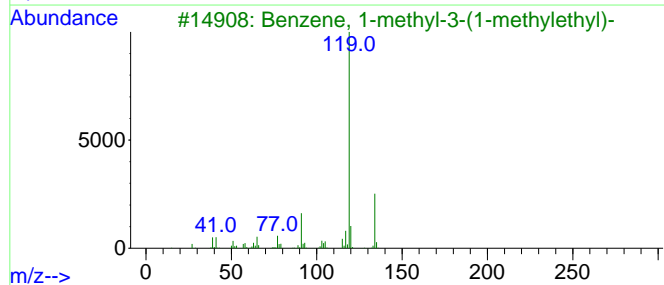
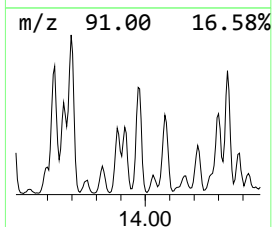
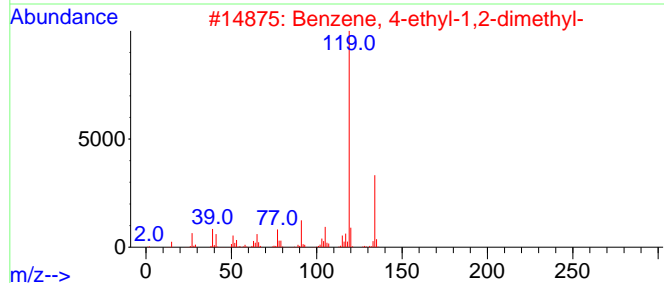
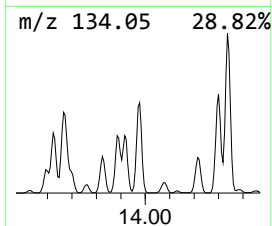
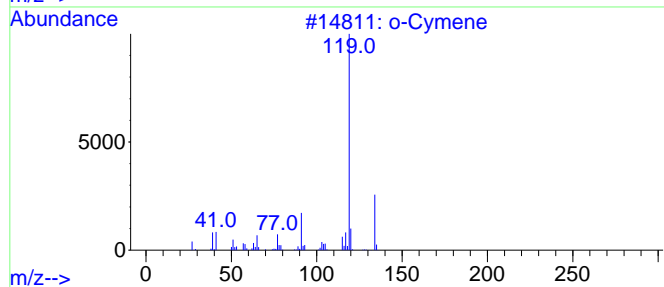
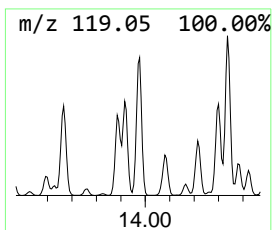
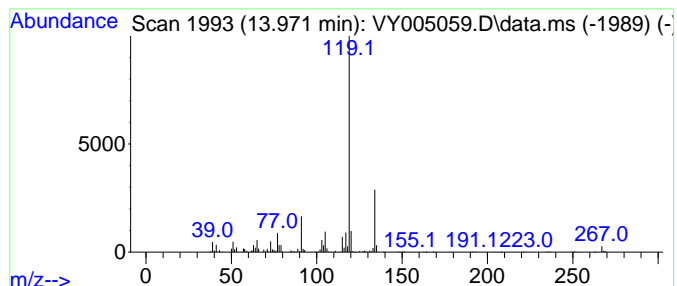
Quant Method : Z:\voasrv\HPCHEM1\MSVOA\_Y\methods\82Y060221S.M  
 Quant Title : SW846 8260

TIC Library : C:\DATABASE\NIST11.L  
 TIC Integration Parameters: LSCINT.P

\*\*\*\*\*  
 Peak Number 5 o-Cymene Concentration Rank 7

R.T.	EstConc	Area	Relative to ISTD	R.T.
13.971	76.36 ug/l	913716	1,4-Dichlorobenzene-d4	13.428

Hit#	of	Tentative ID	MW	MolForm	CAS#	Qual
1	5	o-Cymene	134	C10H14	000527-84-4	95
2		Benzene, 4-ethyl-1,2-dimethyl-	134	C10H14	000934-80-5	94
3		Benzene, 1-methyl-3-(1-methyleth...)	134	C10H14	000535-77-3	94
4		Benzene, 2-ethyl-1,4-dimethyl-	134	C10H14	001758-88-9	94
5		p-Cymene	134	C10H14	000099-87-6	94





Data Path : Z:\voasrv\HPCHEM1\MSVOA\_Y\Data\vy060921\  
 Data File : VY005059.D  
 Acq On : 09 Jun 2021 20:10  
 Operator : SY/MD  
 Sample : M2644-01  
 Misc : 1.05G/5ML/MSVOA\_Y/SOIL  
 ALS Vial : 22 Sample Multiplier: 1

Instrument :  
 MSVOA\_Y  
 ClientSampled :  
 1846-75-76

Quant Method : Z:\voasrv\HPCHEM1\MSVOA\_Y\methods\82Y060221S.M  
 Quant Title : SW846 8260

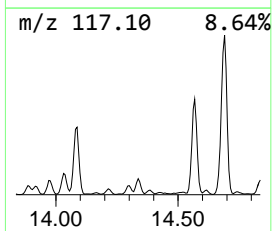
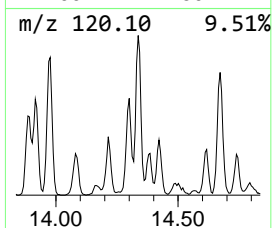
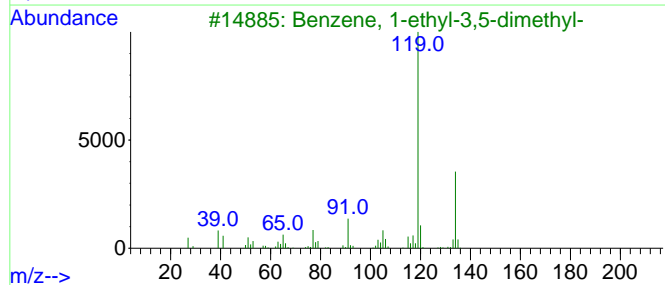
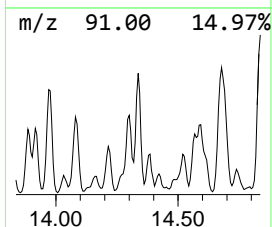
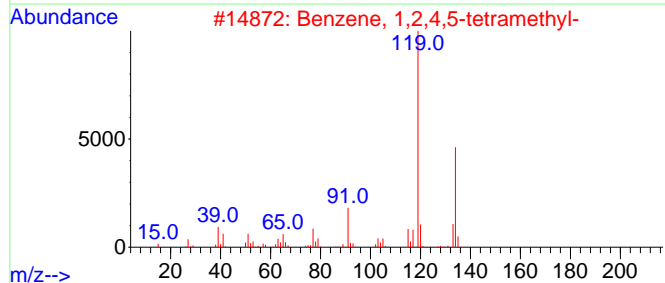
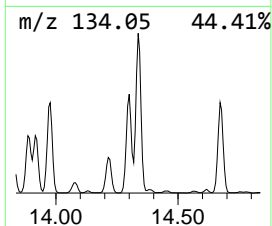
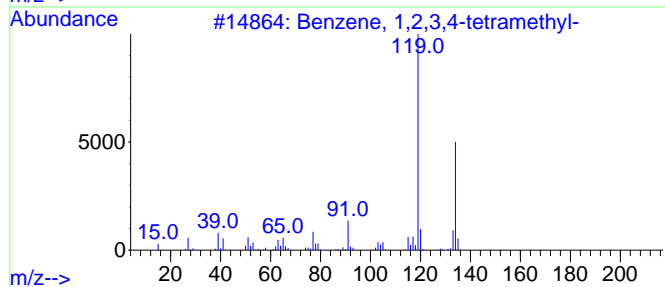
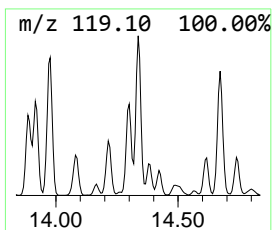
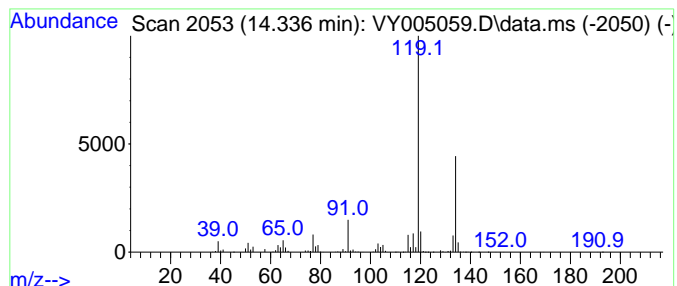
TIC Library : C:\DATABASE\NIST11.L  
 TIC Integration Parameters: LSCINT.P

\*\*\*\*\*  
 Peak Number 6 Benzene, 1,2,3,4-tetramethyl- Concentration Rank 8

R.T.	EstConc	Area	Relative to ISTD	R.T.
14.336	75.75 ug/l	906405	1,4-Dichlorobenzene-d4	13.428

Hit#	of	5	Tentative ID	MW	MolForm	CAS#	Qual
1			Benzene, 1,2,3,4-tetramethyl-	134	C10H14	000488-23-3	95
2			Benzene, 1,2,4,5-tetramethyl-	134	C10H14	000095-93-2	95
3			Benzene, 1-ethyl-3,5-dimethyl-	134	C10H14	000934-74-7	94
4			o-Cymene	134	C10H14	000527-84-4	94
5			Benzene, 1,2,3,5-tetramethyl-	134	C10H14	000527-53-7	94



Data Path : Z:\voasrv\HPCHEM1\MSVOA\_Y\Data\vy060921\  
 Data File : VY005059.D  
 Acq On : 09 Jun 2021 20:10  
 Operator : SY/MD  
 Sample : M2644-01  
 Misc : 1.05G/5ML/MSVOA\_Y/SOIL  
 ALS Vial : 22 Sample Multiplier: 1

Instrument :  
 MSVOA\_Y  
 ClientSampleID :  
 1846-75-76

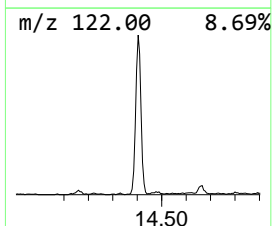
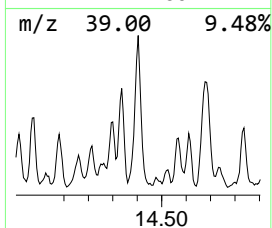
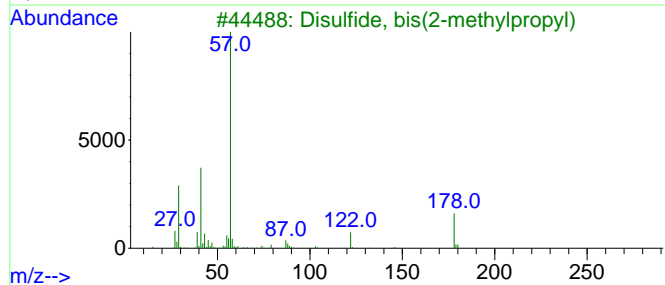
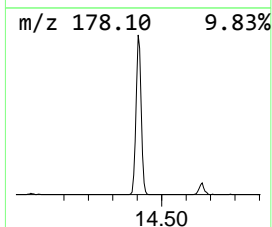
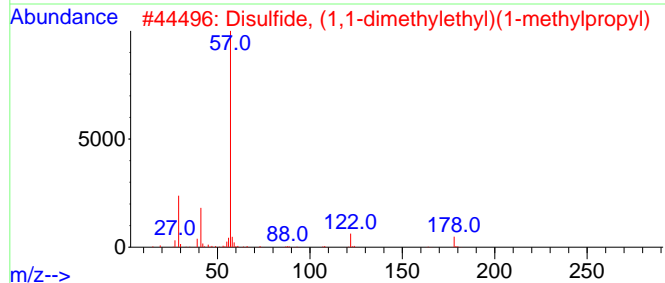
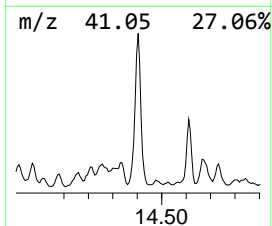
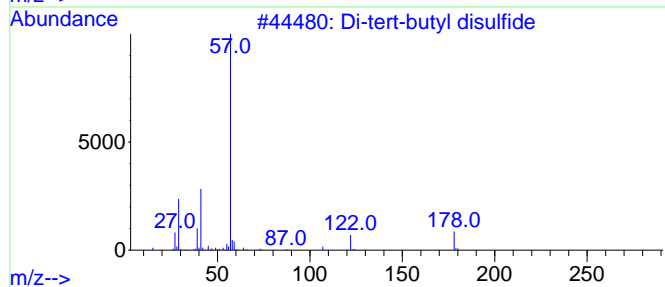
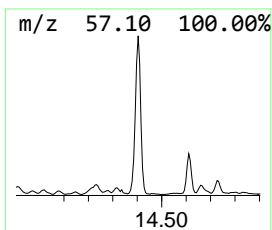
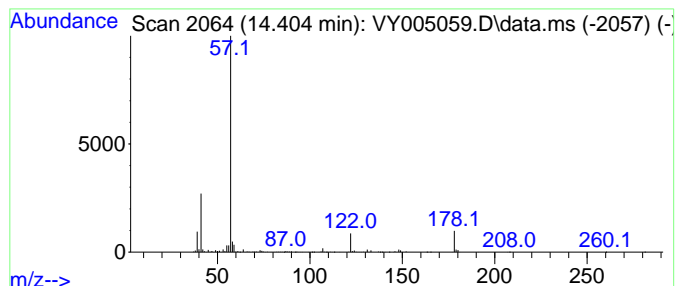
Quant Method : Z:\voasrv\HPCHEM1\MSVOA\_Y\methods\82Y060221S.M  
 Quant Title : SW846 8260

TIC Library : C:\DATABASE\NIST11.L  
 TIC Integration Parameters: LSCINT.P

\*\*\*\*\*  
 Peak Number 7 Di-tert-butyl disulfide Concentration Rank 4

R.T.	EstConc	Area	Relative to ISTD	R.T.
14.404	92.05 ug/l	1101450	1,4-Dichlorobenzene-d4	13.428

Hit#	of	5	Tentative ID	MW	MolForm	CAS#	Qual
1			Di-tert-butyl disulfide	178	C8H18S2	000110-06-5	83
2			Disulfide, (1,1-dimethylethyl)(1...	178	C8H18S2	072437-46-8	59
3			Disulfide, bis(2-methylpropyl)	178	C8H18S2	001518-72-5	59
4			Disulfide, dibutyl	178	C8H18S2	000629-45-8	52
5			Disulfide, bis(1-methylpropyl)	178	C8H18S2	005943-30-6	37



Data Path : Z:\voasrv\HPCHEM1\MSVOA\_Y\Data\vy060921\  
 Data File : VY005059.D  
 Acq On : 09 Jun 2021 20:10  
 Operator : SY/MD  
 Sample : M2644-01  
 Misc : 1.05G/5ML/MSVOA\_Y/SOIL  
 ALS Vial : 22 Sample Multiplier: 1

Instrument :  
 MSVOA\_Y  
 ClientSampleID :  
 1846-75-76

Quant Method : Z:\voasrv\HPCHEM1\MSVOA\_Y\methods\82Y060221S.M  
 Quant Title : SW846 8260

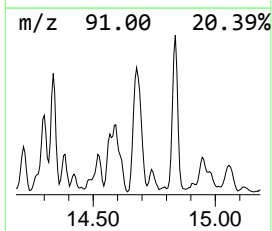
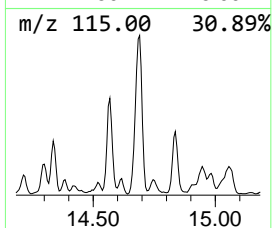
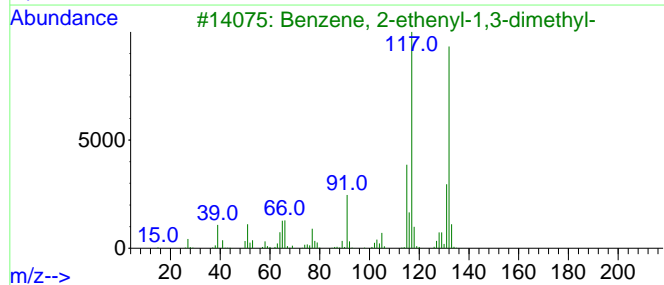
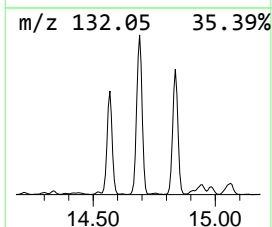
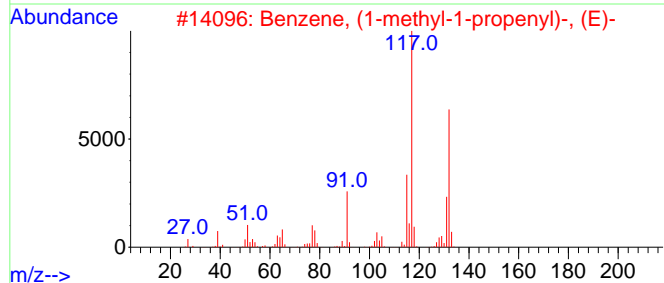
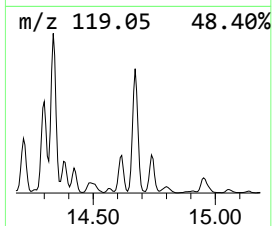
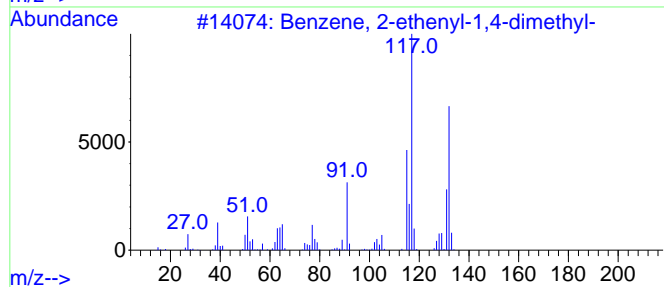
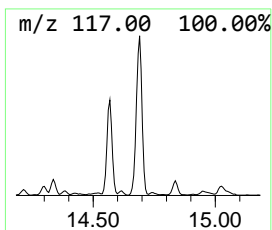
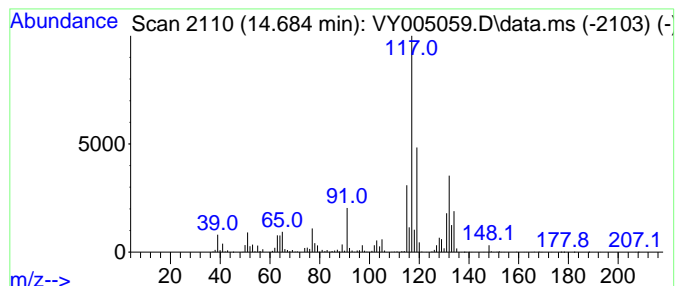
TIC Library : C:\DATABASE\NIST11.L  
 TIC Integration Parameters: LSCINT.P

\*\*\*\*\*  
 Peak Number 8 Benzene, 2-ethenyl-1,4-dime... Concentration Rank 1

R.T.	EstConc	Area	Relative to ISTD	R.T.
14.684	175.06 ug/l	2094800	1,4-Dichlorobenzene-d4	13.428

Hit#	of 5	Tentative ID	MW	MolForm	CAS#	Qual
1		Benzene, 2-ethenyl-1,4-dimethyl-	132	C10H12	002039-89-6	91
2		Benzene, (1-methyl-1-propenyl)-, ...	132	C10H12	000768-00-3	76
3		Benzene, 2-ethenyl-1,3-dimethyl-	132	C10H12	002039-90-9	76
4		Benzene, 2-butenyl-	132	C10H12	001560-06-1	76
5		3-Phenylbut-1-ene	132	C10H12	000934-10-1	70



Data Path : Z:\voasrv\HPCHEM1\MSVOA\_Y\Data\vy060921\  
 Data File : VY005059.D  
 Acq On : 09 Jun 2021 20:10  
 Operator : SY/MD  
 Sample : M2644-01  
 Misc : 1.05G/5ML/MSVOA\_Y/SOIL  
 ALS Vial : 22 Sample Multiplier: 1

Instrument :  
 MSVOA\_Y  
 ClientSampleID :  
 1846-75-76

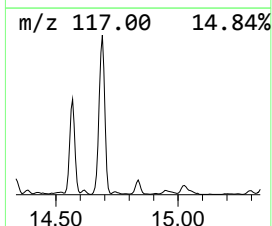
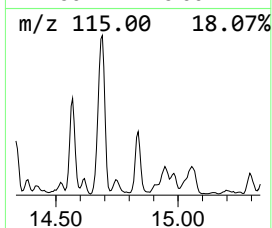
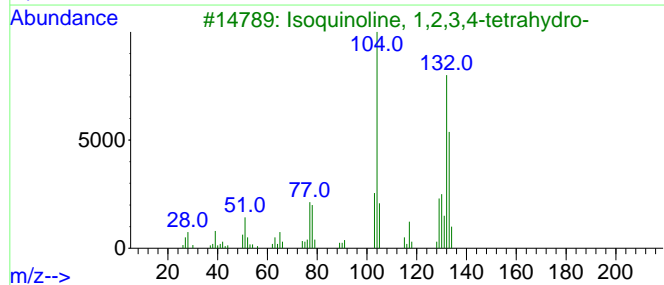
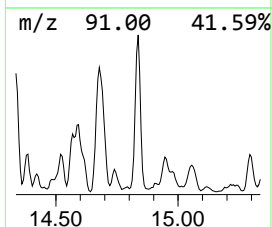
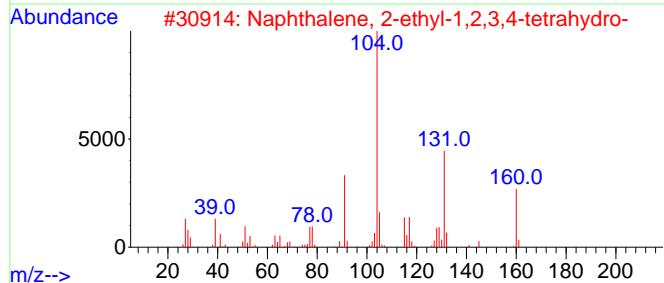
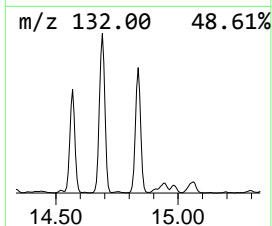
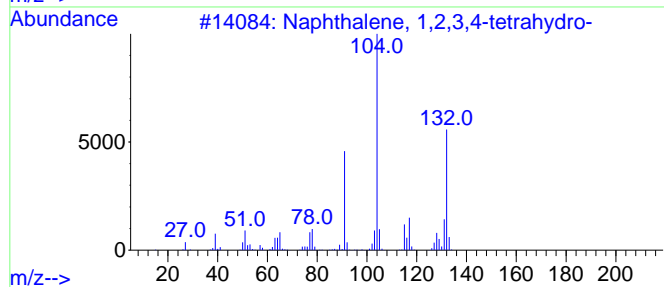
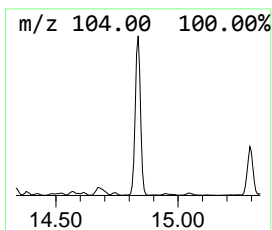
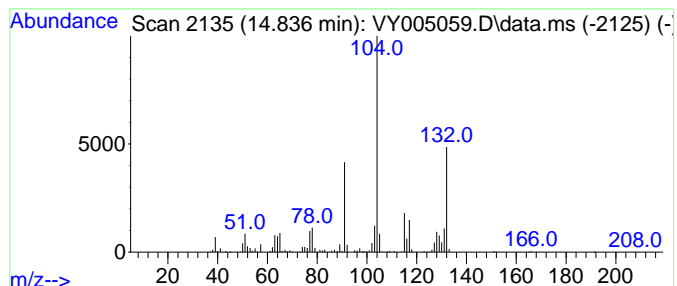
Quant Method : Z:\voasrv\HPCHEM1\MSVOA\_Y\methods\82Y060221S.M  
 Quant Title : SW846 8260

TIC Library : C:\DATABASE\NIST11.L  
 TIC Integration Parameters: LSCINT.P

\*\*\*\*\*  
 Peak Number 9 Naphthalene, 1,2,3,4-tetra... Concentration Rank 9

R.T.	EstConc	Area	Relative to ISTD	R.T.
14.836	73.57 ug/l	880300	1,4-Dichlorobenzene-d4	13.428

Hit#	of	5	Tentative ID	MW	MolForm	CAS#	Qual
1			Naphthalene, 1,2,3,4-tetrahydro-	132	C10H12	000119-64-2	91
2			Naphthalene, 2-ethyl-1,2,3,4-tet...	160	C12H16	032367-54-7	53
3			Isoquinoline, 1,2,3,4-tetrahydro-	133	C9H11N	000091-21-4	43
4			Pentafluoropropionic acid, 2-phe...	268	C11H9F5O2	081089-48-7	38
5			Indan, epoxide	132	C9H8O	000768-22-9	38



Data Path : Z:\voasrv\HPCHEM1\MSVOA\_Y\Data\vy060921\  
 Data File : VY005059.D  
 Acq On : 09 Jun 2021 20:10  
 Operator : SY/MD  
 Sample : M2644-01  
 Misc : 1.05G/5ML/MSVOA\_Y/SOIL  
 ALS Vial : 22 Sample Multiplier: 1

Instrument :  
 MSVOA\_Y  
 ClientSampleID :  
 1846-75-76

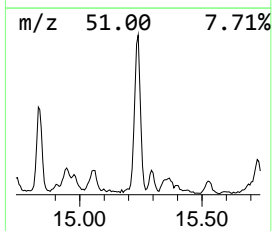
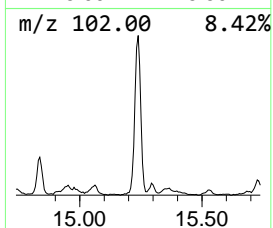
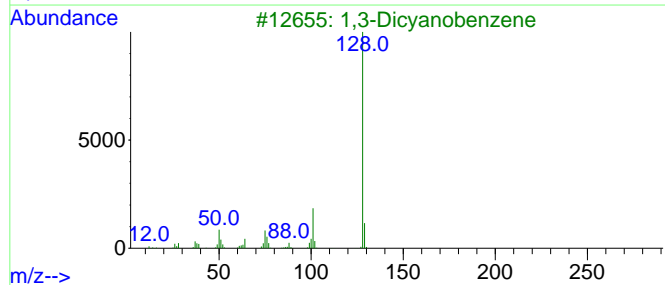
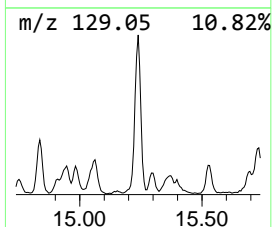
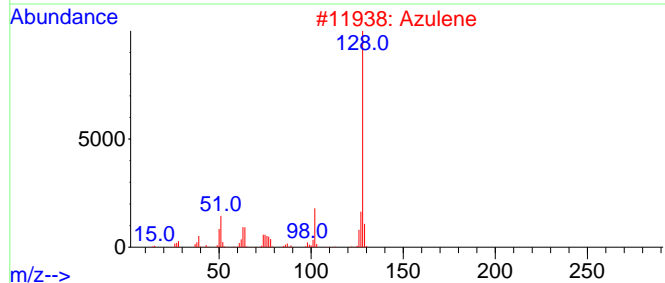
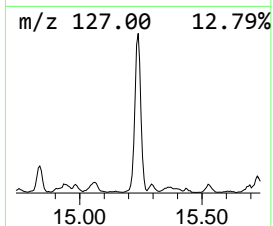
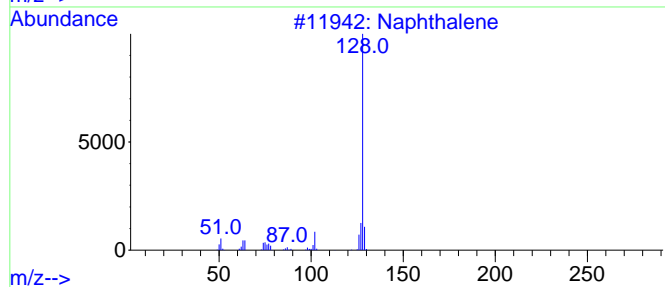
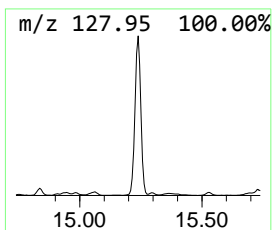
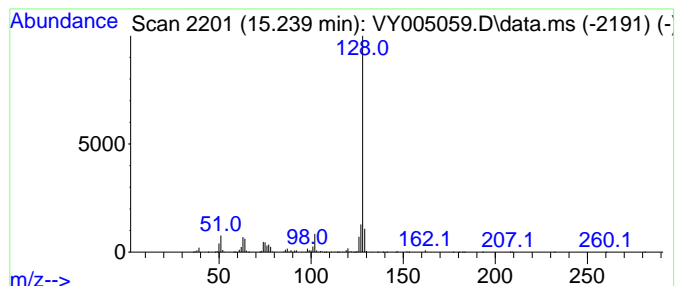
Quant Method : Z:\voasrv\HPCHEM1\MSVOA\_Y\methods\82Y060221S.M  
 Quant Title : SW846 8260

TIC Library : C:\DATABASE\NIST11.L  
 TIC Integration Parameters: LSCINT.P

\*\*\*\*\*  
 Peak Number 10 Azulene Concentration Rank 3

R.T.	EstConc	Area	Relative to ISTD	R.T.
15.239	94.62 ug/l	1132190	1,4-Dichlorobenzene-d4	13.428

Hit#	of 5	Tentative ID	MW	MolForm	CAS#	Qual
1		Naphthalene	128	C10H8	000091-20-3	95
2		Azulene	128	C10H8	000275-51-4	91
3		1,3-Dicyanobenzene	128	C8H4N2	000626-17-5	59
4		4a,8a-(Methaniminomethano)naphth...	275	C18H13NO2	069915-10-2	56
5		[4.2.2]Propella-2,4,7,9-tetraene	128	C10H8	088090-34-0	50



Data Path : Z:\voasrv\HPCHEM1\MSVOA\_Y\Data\vy060921\  
Data File : VY005059.D  
Acq On : 09 Jun 2021 20:10  
Operator : SY/MD  
Sample : M2644-01  
Misc : 1.05G/5ML/MSVOA\_Y/SOIL  
ALS Vial : 22 Sample Multiplier: 1

Instrument :  
MSVOA\_Y  
ClientSampleId :  
1846-75-76

Quant Method : Z:\voasrv\HPCHEM1\MSVOA\_Y\methods\82Y060221S.M  
Quant Title : SW846 8260

TIC Library : C:\DATABASE\NIST11.L  
TIC Integration Parameters: LSCINT.P

TIC Top Hit name	RT	EstConc	Units	Response	--Internal Standard--			
					#	RT	Resp	Conc
Benzene, 1-ethy...	12.739	161.3	ug/l	1930470	4	13.428	598311	50.0
Benzene, 1-ethy...	12.977	85.1	ug/l	1018780	4	13.428	598311	50.0
Benzene, 2-prop...	13.629	86.2	ug/l	1031830	4	13.428	598311	50.0
Undecane	13.751	70.0	ug/l	837293	4	13.428	598311	50.0
o-Cymene	13.971	76.4	ug/l	913716	4	13.428	598311	50.0
Benzene, 1,2,3,...	14.336	75.8	ug/l	906405	4	13.428	598311	50.0
Di-tert-butyl d...	14.404	92.0	ug/l	1101450	4	13.428	598311	50.0
Benzene, 2-ethe...	14.684	175.1	ug/l	2094800	4	13.428	598311	50.0
Naphthalene, 1,...	14.836	73.6	ug/l	880300	4	13.428	598311	50.0
Azulene	15.239	94.6	ug/l	1132190	4	13.428	598311	50.0