

Data Path : Z:\voasrv\HPCHEM1\MSVOA_Y\Data\VY061021\
 Data File : VY005105.D
 Acq On : 11 Jun 2021 04:02
 Operator : SY/MD
 Sample : M2672-20
 Misc : 5.16G/5ML/MSVOA_Y/SOIL
 ALS Vial : 47 Sample Multiplier: 1

Instrument :
 MSVOA_Y
 ClientSampled :

Quant Time: Jun 11 07:08:25 2021
 Quant Method : Z:\voasrv\HPCHEM1\MSVOA_Y\methods\82Y060221S.M
 Quant Title : SW846 8260
 QLast Update : Thu Jun 03 04:43:33 2021
 Response via : Initial Calibration

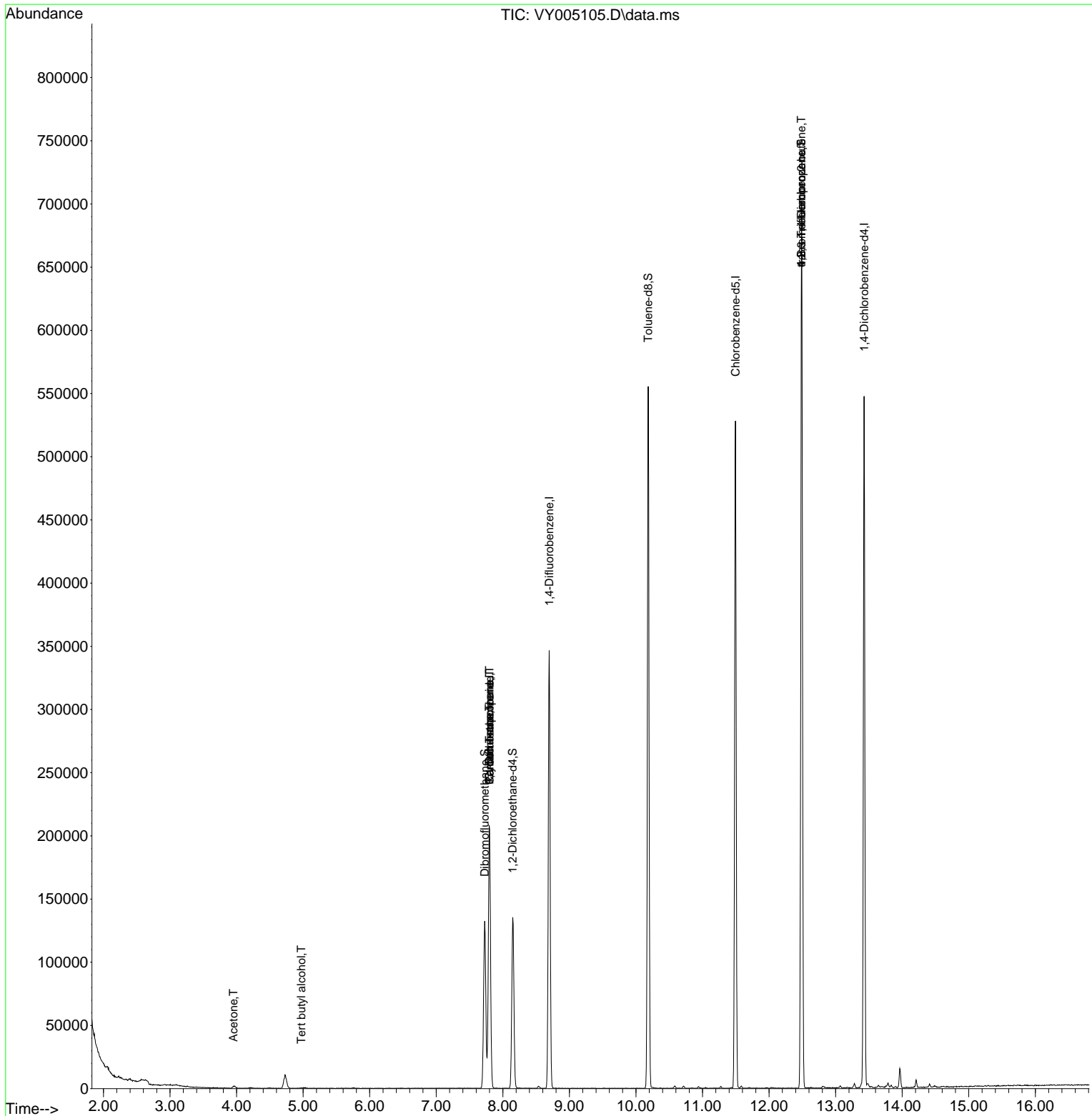
| Compound | R.T. | QIon | Response | Conc | Units | Dev(Min) |
|-------------------------------|--------|-------|----------|-----------|--------|----------|
| ----- | | | | | | |
| Internal Standards | | | | | | |
| 1) Pentafluorobenzene | 7.801 | 168 | 161318 | 50.000 | ug/l | 0.00 |
| 34) 1,4-Difluorobenzene | 8.697 | 114 | 294100 | 50.000 | ug/l | 0.00 |
| 63) Chlorobenzene-d5 | 11.496 | 117 | 289183 | 50.000 | ug/l | 0.00 |
| 72) 1,4-Dichlorobenzene-d4 | 13.428 | 152 | 135679 | 50.000 | ug/l | 0.00 |
| System Monitoring Compounds | | | | | | |
| 33) 1,2-Dichloroethane-d4 | 8.149 | 65 | 107348 | 62.945 | ug/l | 0.00 |
| Spiked Amount | 50.000 | Range | 50 - 163 | Recovery | = | 125.900% |
| 35) Dibromofluoromethane | 7.728 | 113 | 92651 | 58.555 | ug/l | 0.00 |
| Spiked Amount | 50.000 | Range | 54 - 147 | Recovery | = | 117.100% |
| 50) Toluene-d8 | 10.185 | 98 | 363427 | 55.304 | ug/l | 0.00 |
| Spiked Amount | 50.000 | Range | 49 - 140 | Recovery | = | 110.600% |
| 62) 4-Bromofluorobenzene | 12.483 | 95 | 126507 | 55.976 | ug/l | 0.00 |
| Spiked Amount | 50.000 | Range | 25 - 144 | Recovery | = | 111.960% |
| Target Compounds | | | | | | |
| | | | | | Qvalue | |
| 11) Tert butyl alcohol | 4.972 | 59 | 584 | 2.978 | ug/l # | 74 |
| 16) Acetone | 3.954 | 43 | 2993 | 7.290 | ug/l | 92 |
| 20) Methylene Chloride | 4.735 | 84 | 7962 | Below Cal | # | 83 |
| 31) Cyclohexane | 7.795 | 56 | 3484 | 1.160 | ug/l # | 1 |
| 36) 1,1-Dichloropropene | 7.801 | 75 | 12390 | 4.305 | ug/l # | 50 |
| 38) Carbon Tetrachloride | 7.801 | 117 | 16623 | 6.636 | ug/l # | 16 |
| 76) 1,2,3-Trichloropropane | 12.483 | 75 | 70495 | 47.398 | ug/l # | 100 |
| 81) trans-1,4-Dichloro-2-b... | 12.483 | 75 | 70495 | 87.107 | ug/l # | 16 |
| ----- | | | | | | |

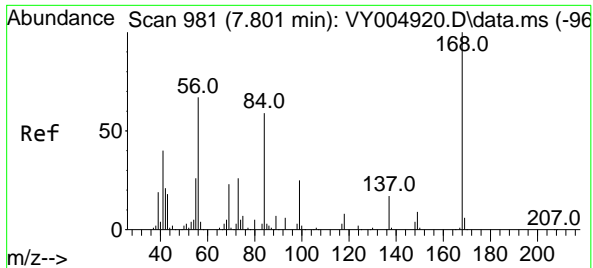
(#) = qualifier out of range (m) = manual integration (+) = signals summed

Data Path : Z:\voasrv\HPCHEM1\MSVOA_Y\Data\VY061021\
 Data File : VY005105.D
 Acq On : 11 Jun 2021 04:02
 Operator : SY/MD
 Sample : M2672-20
 Misc : 5.16G/5ML/MSVOA_Y/SOIL
 ALS Vial : 47 Sample Multiplier: 1

Instrument :
 MSVOA_Y
 ClientSampled :

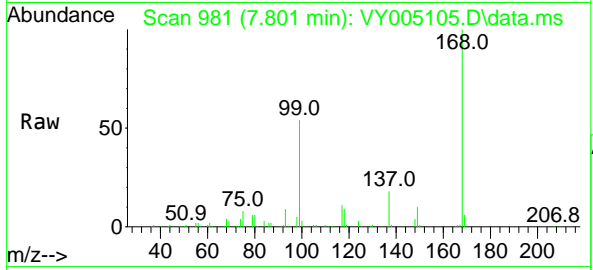
Quant Time: Jun 11 07:08:25 2021
 Quant Method : Z:\voasrv\HPCHEM1\MSVOA_Y\methods\82Y060221S.M
 Quant Title : SW846 8260
 QLast Update : Thu Jun 03 04:43:33 2021
 Response via : Initial Calibration



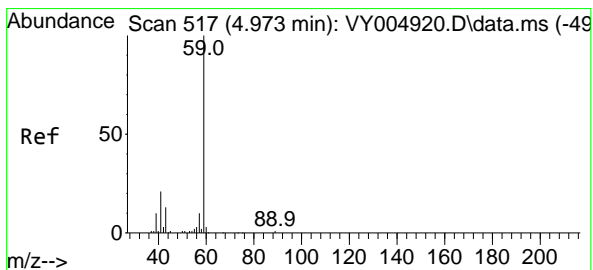
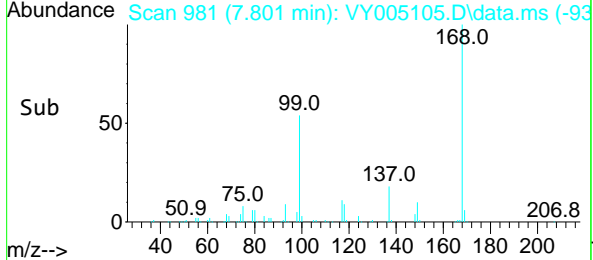
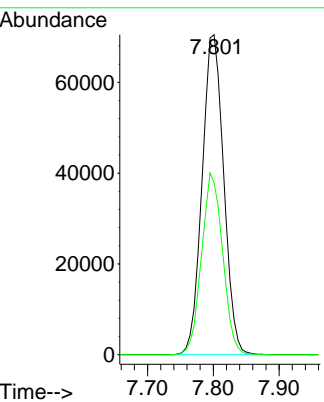


#1
 Pentafluorobenzene
 Concen: 50.000 ug/l
 RT: 7.801 min Scan# 981
 Delta R.T. 0.000 min
 Lab File: VY005105.D
 Acq: 11 Jun 2021 04:02

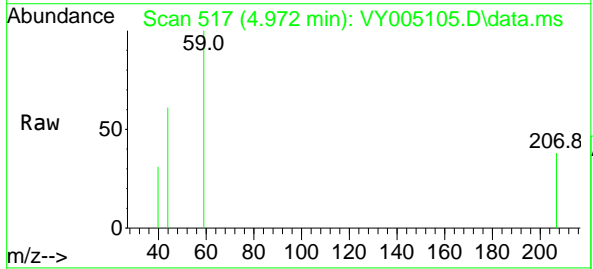
Instrument :
 MSVOA_Y
 ClientSampled :



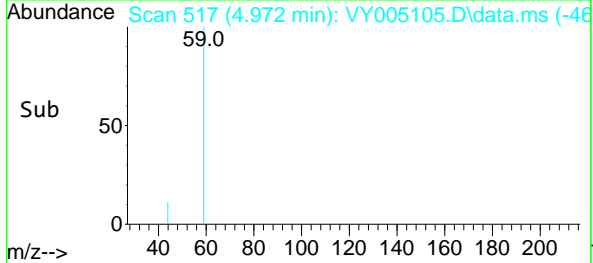
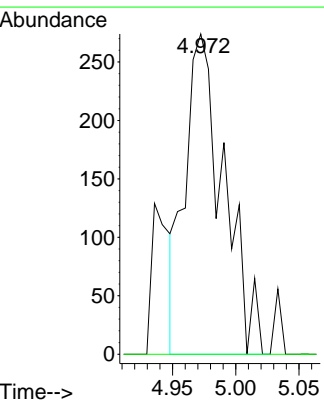
Tgt Ion:168 Resp: 161318
 Ion Ratio Lower Upper
 168 100
 99 53.7 43.9 65.9

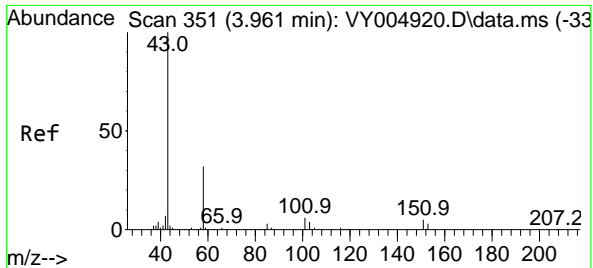


#11
 Tert butyl alcohol
 Concen: 2.978 ug/l
 RT: 4.972 min Scan# 517
 Delta R.T. -0.001 min
 Lab File: VY005105.D
 Acq: 11 Jun 2021 04:02



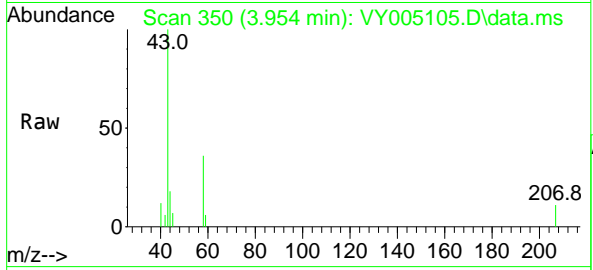
Tgt Ion: 59 Resp: 584
 Ion Ratio Lower Upper
 59 100
 57 0.0 7.7 11.5#



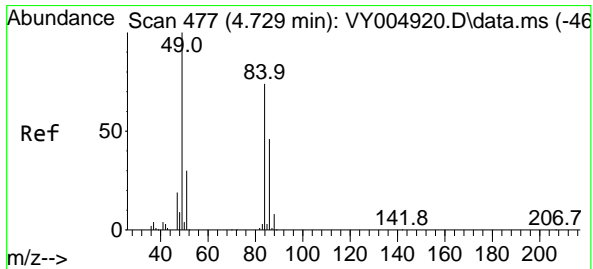
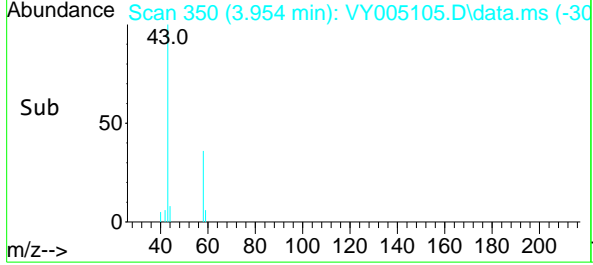
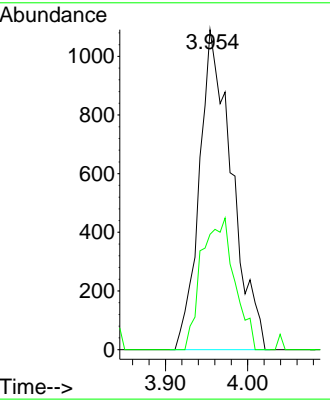


#16
 Acetone
 Concen: 7.290 ug/l
 RT: 3.954 min Scan# 350
 Delta R.T. -0.006 min
 Lab File: VY005105.D
 Acq: 11 Jun 2021 04:02

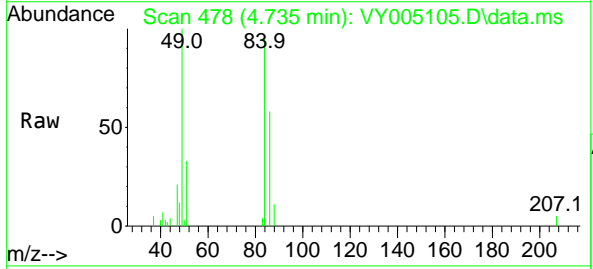
Instrument :
 MSVOA_Y
 ClientSampled :



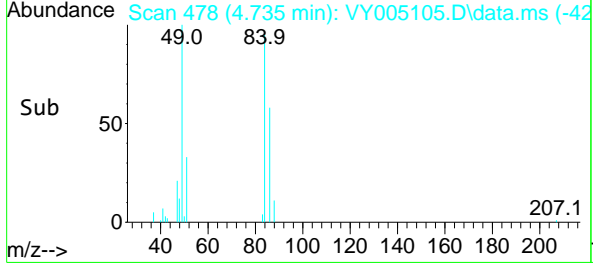
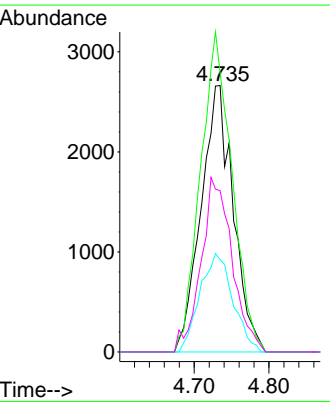
Tgt Ion: 43 Resp: 2993
 Ion Ratio Lower Upper
 43 100
 58 36.0 25.3 37.9

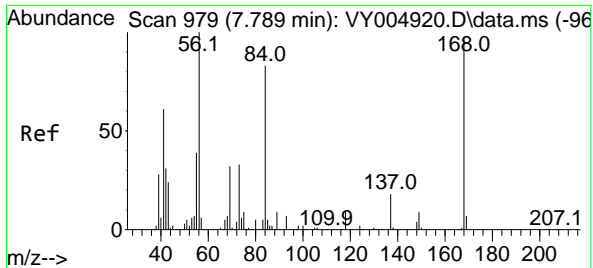


#20
 Methylene Chloride
 Concen: Below Cal
 RT: 4.735 min Scan# 478
 Delta R.T. 0.006 min
 Lab File: VY005105.D
 Acq: 11 Jun 2021 04:02



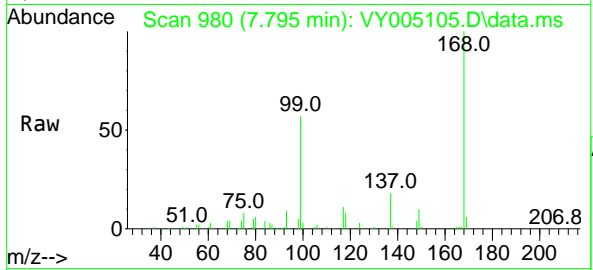
Tgt Ion: 84 Resp: 7962
 Ion Ratio Lower Upper
 84 100
 49 104.7 108.0 162.0#
 51 34.6 32.6 48.8
 86 60.5 49.9 74.9





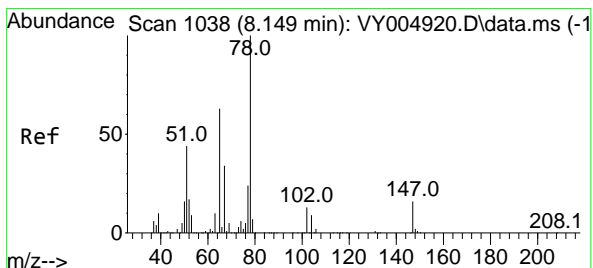
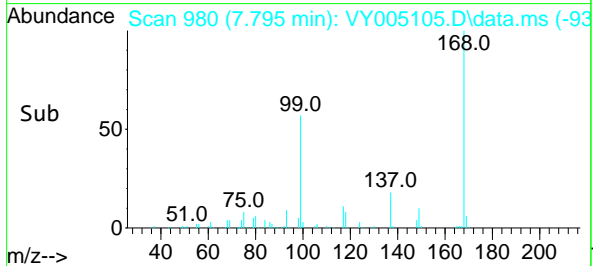
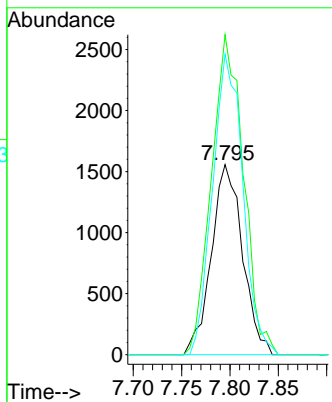
#31
 Cyclohexane
 Concen: 1.160 ug/l
 RT: 7.795 min Scan# 980
 Delta R.T. 0.006 min
 Lab File: VY005105.D
 Acq: 11 Jun 2021 04:02

Instrument :
 MSVOA_Y
 ClientSampled :

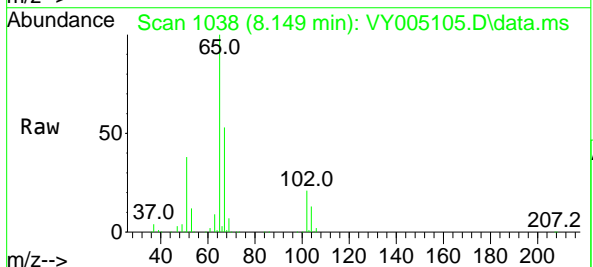


Tgt Ion: 56 Resp: 3484

| Ion | Ratio | Lower | Upper |
|-----|-------|-------|-------|
| 56 | 100 | | |
| 69 | 168.4 | 25.3 | 37.9# |
| 84 | 158.1 | 66.2 | 99.4# |

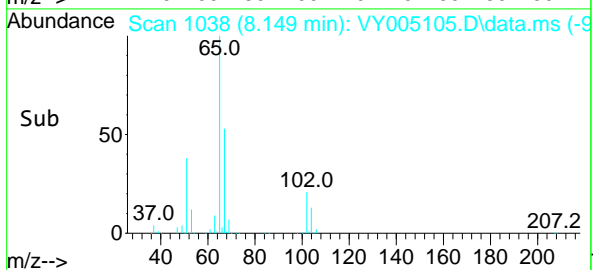
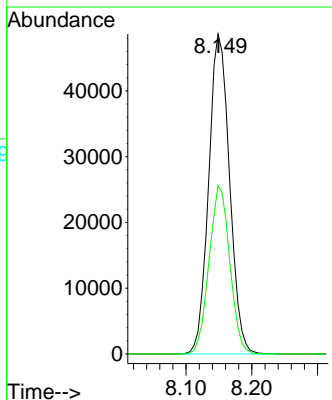


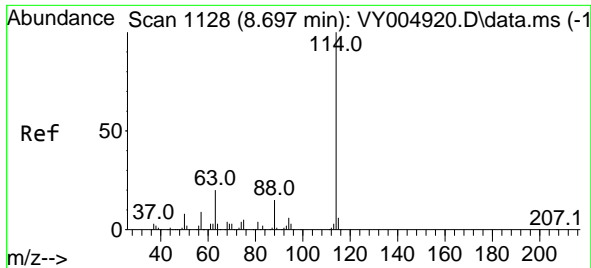
#33
 1,2-Dichloroethane-d4
 Concen: 62.945 ug/l
 RT: 8.149 min Scan# 1038
 Delta R.T. -0.000 min
 Lab File: VY005105.D
 Acq: 11 Jun 2021 04:02



Tgt Ion: 65 Resp: 107348

| Ion | Ratio | Lower | Upper |
|-----|-------|-------|-------|
| 65 | 100 | | |
| 67 | 52.2 | 0.0 | 110.6 |

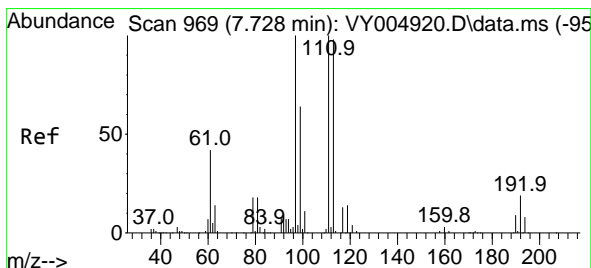
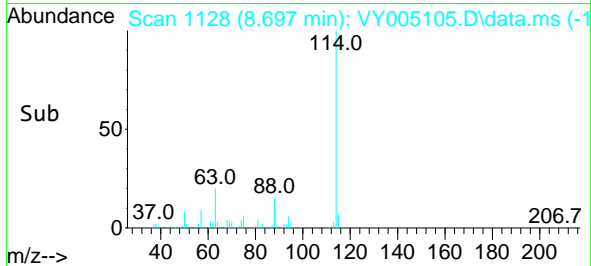
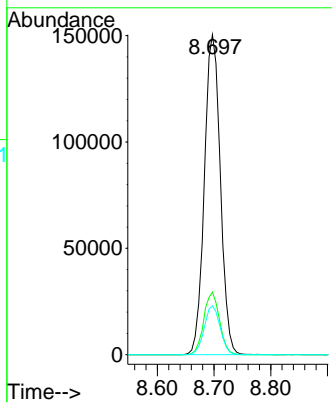
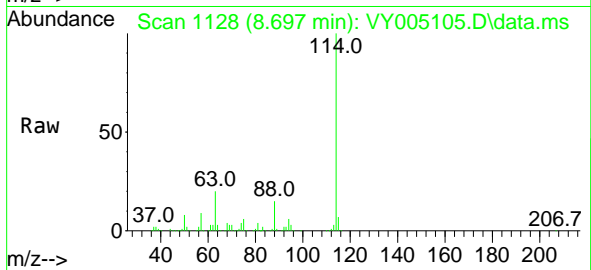




#34
 1,4-Difluorobenzene
 Concen: 50.000 ug/l
 RT: 8.697 min Scan# 1128
 Delta R.T. -0.000 min
 Lab File: VY005105.D
 Acq: 11 Jun 2021 04:02

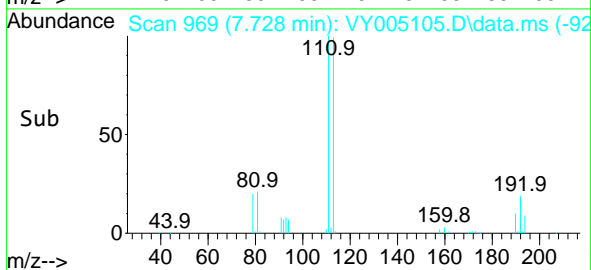
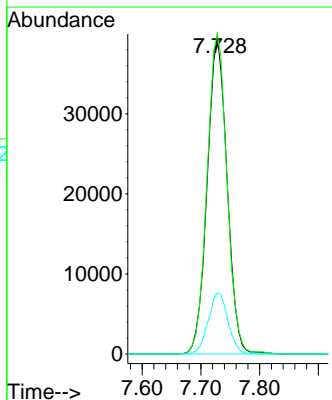
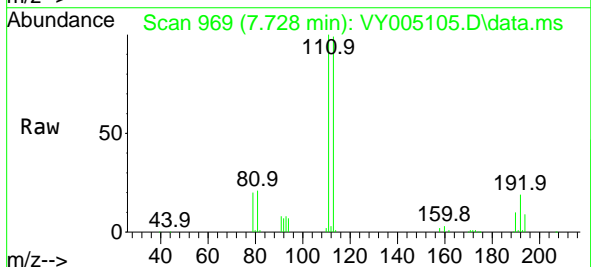
Instrument :
 MSVOA_Y
 ClientSampled :

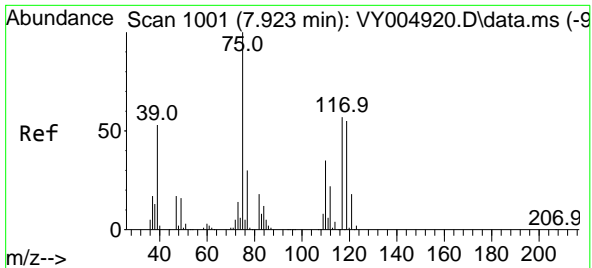
| Tgt Ion | Resp | Lower | Upper |
|---------|------|-------|-------|
| 114 | 100 | | |
| 63 | 19.6 | 0.0 | 41.0 |
| 88 | 15.3 | 0.0 | 30.6 |



#35
 Dibromofluoromethane
 Concen: 58.555 ug/l
 RT: 7.728 min Scan# 969
 Delta R.T. -0.000 min
 Lab File: VY005105.D
 Acq: 11 Jun 2021 04:02

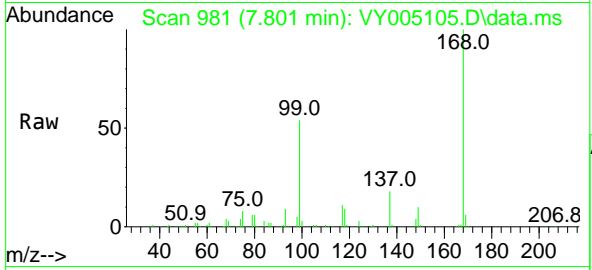
| Tgt Ion | Resp | Lower | Upper |
|---------|-------|-------|-------|
| 113 | 100 | | |
| 111 | 101.9 | 81.8 | 122.8 |
| 192 | 19.2 | 15.3 | 22.9 |



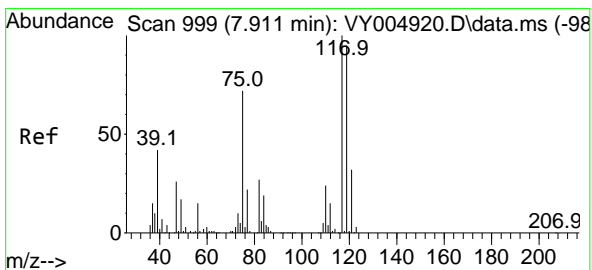
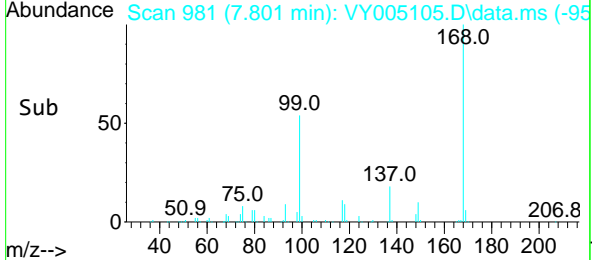
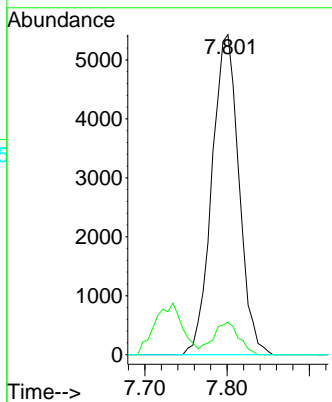


#36
 1,1-Dichloropropene
 Concen: 4.305 ug/l
 RT: 7.801 min Scan# 981
 Delta R.T. -0.122 min
 Lab File: VY005105.D
 Acq: 11 Jun 2021 04:02

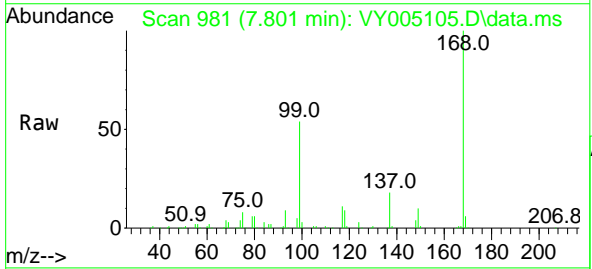
Instrument :
 MSVOA_Y
 ClientSampled :



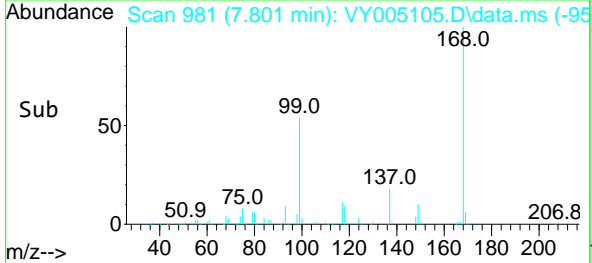
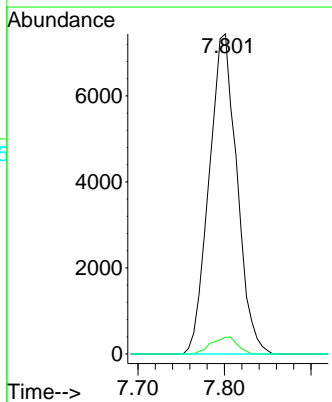
| Tgt Ion | Resp | Lower | Upper |
|---------|-------|-------|-------|
| 75 | 12390 | | |
| 75 | 100 | | |
| 110 | 9.7 | 17.5 | 52.5# |
| 77 | 0.0 | 25.1 | 37.7# |

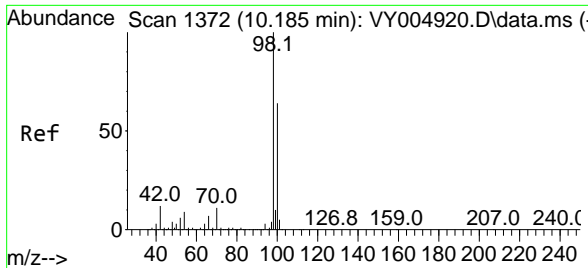


#38
 Carbon Tetrachloride
 Concen: 6.636 ug/l
 RT: 7.801 min Scan# 981
 Delta R.T. -0.110 min
 Lab File: VY005105.D
 Acq: 11 Jun 2021 04:02



| Tgt Ion | Resp | Lower | Upper |
|---------|-------|-------|--------|
| 117 | 16623 | | |
| 117 | 100 | | |
| 119 | 5.2 | 76.1 | 114.1# |
| 121 | 0.0 | 25.5 | 38.3# |

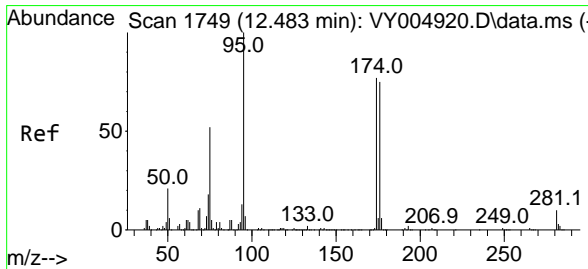
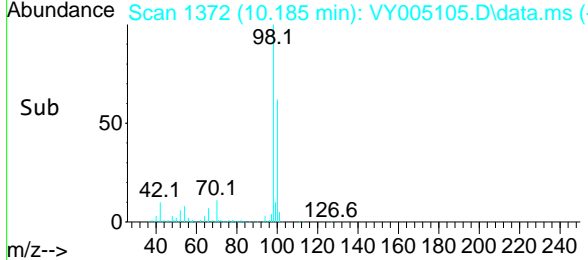
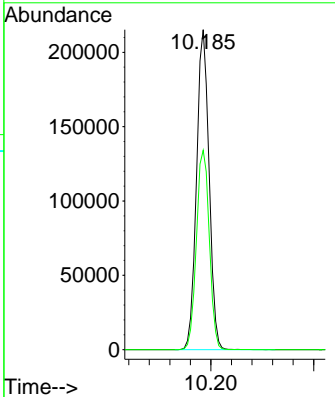
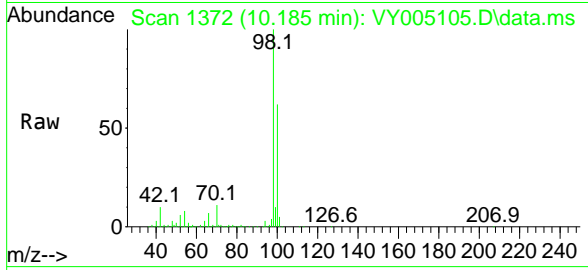




#50
 Toluene-d8
 Concen: 55.304 ug/l
 RT: 10.185 min Scan# 1372
 Delta R.T. -0.000 min
 Lab File: VY005105.D
 Acq: 11 Jun 2021 04:02

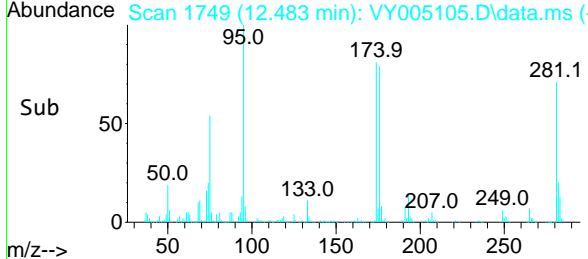
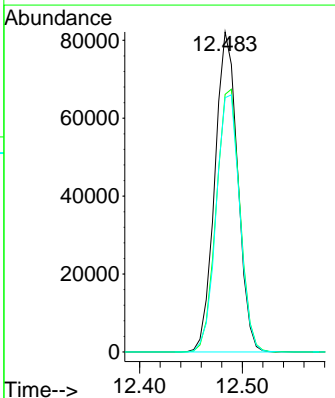
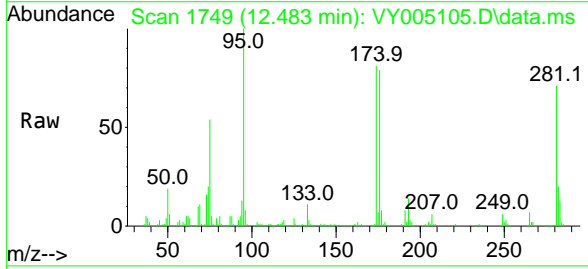
Instrument :
 MSVOA_Y
 ClientSampled :

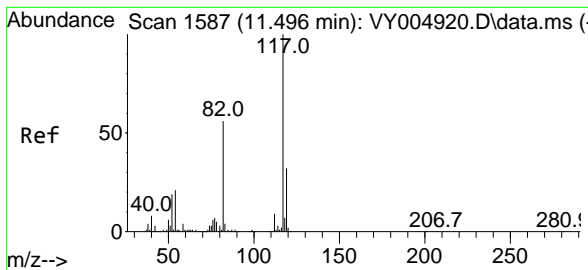
Tgt Ion: 98 Resp: 363427
 Ion Ratio Lower Upper
 98 100
 100 64.1 51.8 77.6



#62
 4-Bromofluorobenzene
 Concen: 55.976 ug/l
 RT: 12.483 min Scan# 1749
 Delta R.T. -0.000 min
 Lab File: VY005105.D
 Acq: 11 Jun 2021 04:02

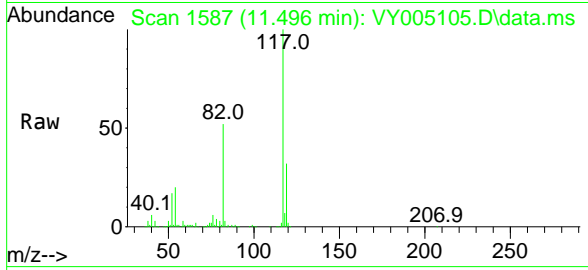
Tgt Ion: 95 Resp: 126507
 Ion Ratio Lower Upper
 95 100
 174 84.7 0.0 160.8
 176 82.9 0.0 155.6





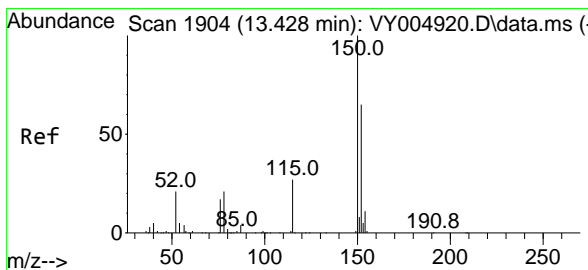
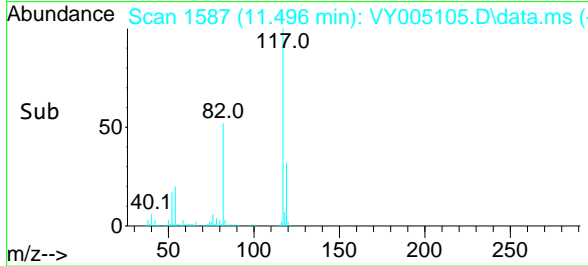
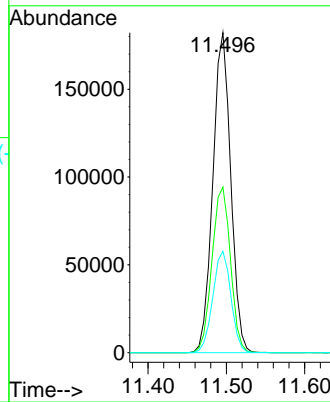
#63
 Chlorobenzene-d5
 Concen: 50.000 ug/l
 RT: 11.496 min Scan# 1587
 Delta R.T. -0.000 min
 Lab File: VY005105.D
 Acq: 11 Jun 2021 04:02

Instrument :
 MSVOA_Y
 ClientSampled :

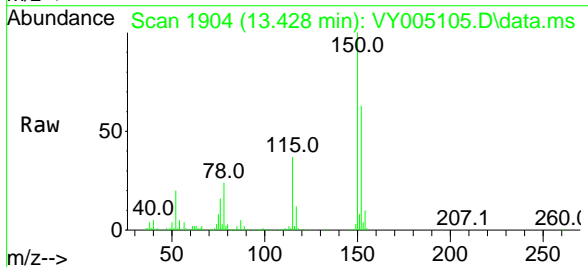


Tgt Ion:117 Resp: 289183

| Ion | Ratio | Lower | Upper |
|-----|-------|-------|-------|
| 117 | 100 | | |
| 82 | 51.7 | 44.8 | 67.2 |
| 119 | 31.6 | 25.2 | 37.8 |

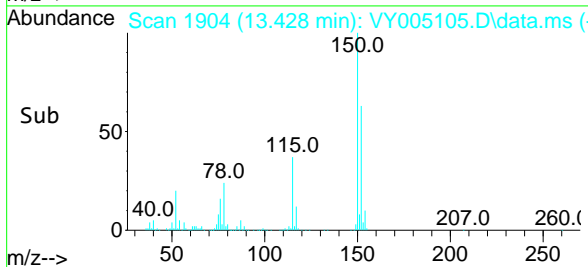
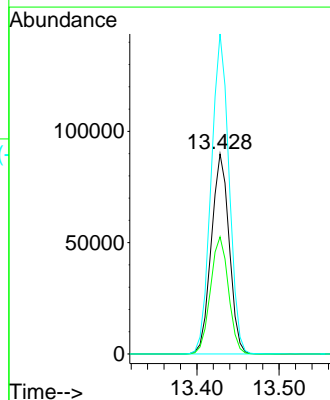


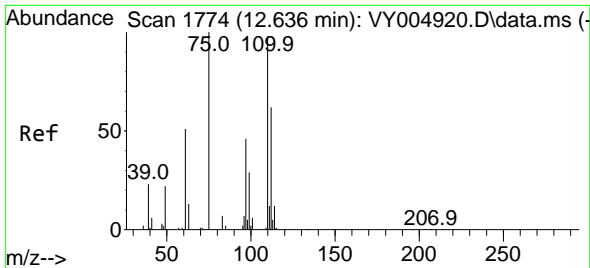
#72
 1,4-Dichlorobenzene-d4
 Concen: 50.000 ug/l
 RT: 13.428 min Scan# 1904
 Delta R.T. -0.000 min
 Lab File: VY005105.D
 Acq: 11 Jun 2021 04:02



Tgt Ion:152 Resp: 135679

| Ion | Ratio | Lower | Upper |
|-----|-------|-------|-------|
| 152 | 100 | | |
| 115 | 58.8 | 29.9 | 89.7 |
| 150 | 159.9 | 0.0 | 347.8 |

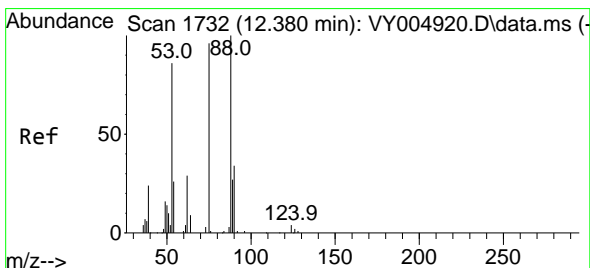
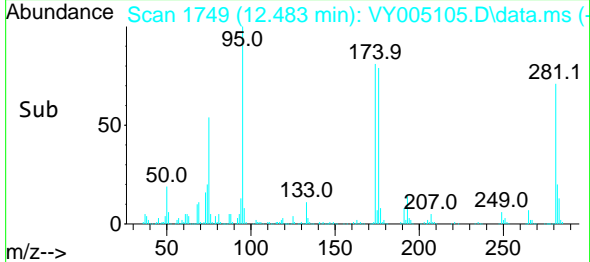
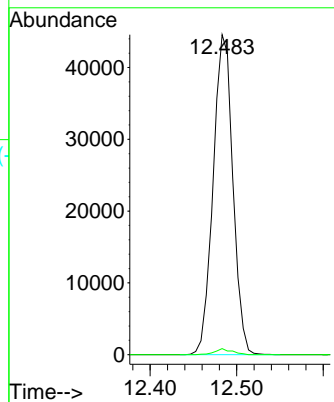
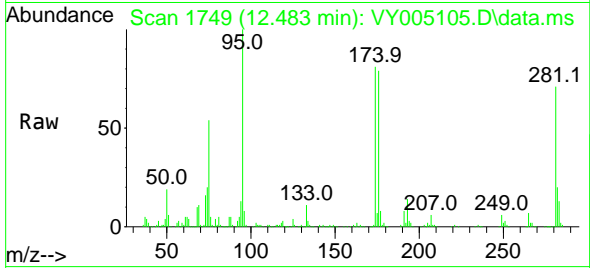




#76
 1,2,3-Trichloropropane
 Concen: 47.398 ug/l
 RT: 12.483 min Scan# 1749
 Delta R.T. -0.153 min
 Lab File: VY005105.D
 Acq: 11 Jun 2021 04:02

Instrument :
 MSVOA_Y
 ClientSampled :

Tgt Ion: 75 Resp: 70495
 Ion Ratio Lower Upper
 75 100
 77 1.6 0.0 0.0#



#81
 trans-1,4-Dichloro-2-butene
 Concen: 87.107 ug/l
 RT: 12.483 min Scan# 1749
 Delta R.T. 0.103 min
 Lab File: VY005105.D
 Acq: 11 Jun 2021 04:02

Tgt Ion: 75 Resp: 70495
 Ion Ratio Lower Upper
 75 100
 53 0.0 69.3 103.9#
 89 1.5 35.0 52.6#

