

Data Path : Z:\voasrv\HPCHEM1\MSVOA_Y\Data\VY061121\
 Data File : VY005125.D
 Acq On : 11 Jun 2021 15:30
 Operator : SY/MD
 Sample : M2678-08
 Misc : 5.05G/5ML/MSVOA_Y/SOIL
 ALS Vial : 14 Sample Multiplier: 1

Instrument :
 MSVOA_Y
 ClientSampleId :
 0242-AMND-COMP-G(CL-07)

Quant Time: Jun 12 00:36:35 2021
 Quant Method : Z:\voasrv\HPCHEM1\MSVOA_Y\methods\82Y060221S.M
 Quant Title : SW846 8260
 QLast Update : Thu Jun 03 04:43:33 2021
 Response via : Initial Calibration

Compound	R.T.	QIon	Response	Conc	Units	Dev(Min)

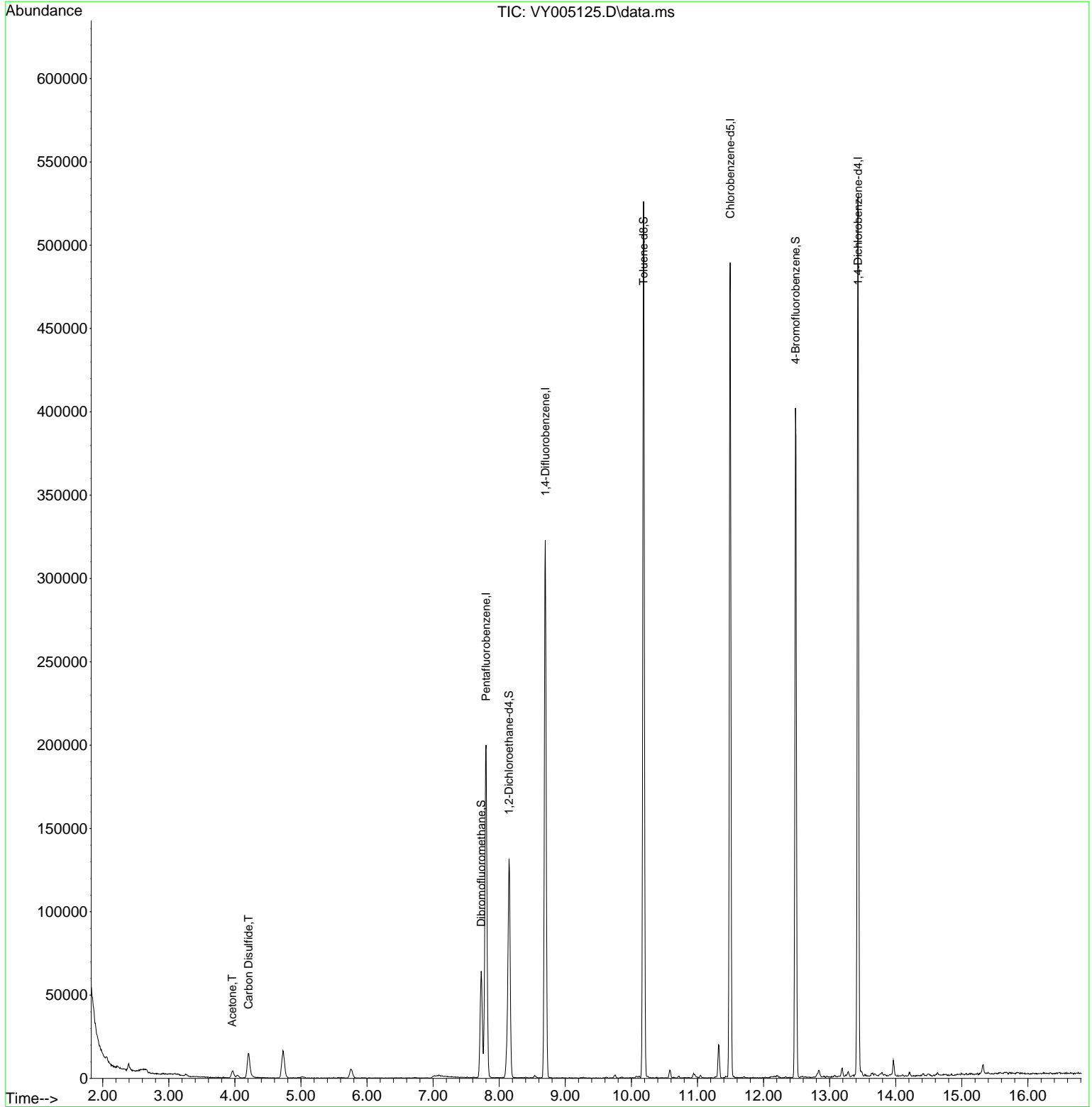
Internal Standards						
1) Pentafluorobenzene	7.801	168	153826	50.000	ug/l	0.00
34) 1,4-Difluorobenzene	8.697	114	276112	50.000	ug/l	0.00
63) Chlorobenzene-d5	11.496	117	268537	50.000	ug/l	0.00
72) 1,4-Dichlorobenzene-d4	13.428	152	128608	50.000	ug/l	0.00
System Monitoring Compounds						
33) 1,2-Dichloroethane-d4	8.149	65	98226	60.402	ug/l	0.00
Spiked Amount	50.000	Range	50 - 163	Recovery	=	120.800%
35) Dibromofluoromethane	7.728	113	44210	29.761	ug/l	0.00
Spiked Amount	50.000	Range	54 - 147	Recovery	=	59.520%
50) Toluene-d8	10.185	98	338419	54.853	ug/l	0.00
Spiked Amount	50.000	Range	49 - 140	Recovery	=	109.700%
62) 4-Bromofluorobenzene	12.483	95	116306	54.814	ug/l	0.00
Spiked Amount	50.000	Range	25 - 144	Recovery	=	109.620%
Target Compounds						
					Qvalue	
16) Acetone	3.961	43	7361	18.803	ug/l #	84
17) Carbon Disulfide	4.204	76	28230	5.807	ug/l	98

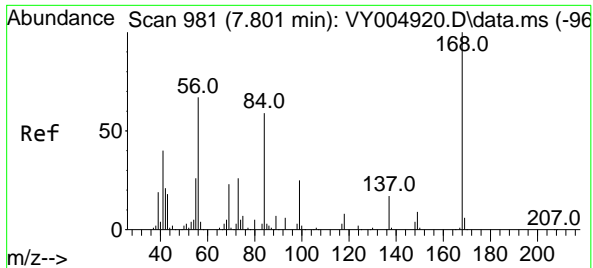
(#) = qualifier out of range (m) = manual integration (+) = signals summed

Data Path : Z:\voasrv\HPCHEM1\MSVOA_Y\Data\VY061121\
 Data File : VY005125.D
 Acq On : 11 Jun 2021 15:30
 Operator : SY/MD
 Sample : M2678-08
 Misc : 5.05G/5ML/MSVOA_Y/SOIL
 ALS Vial : 14 Sample Multiplier: 1

Instrument :
 MSVOA_Y
 ClientSampled :
 0242-AMND-COMP-G(CL-07)

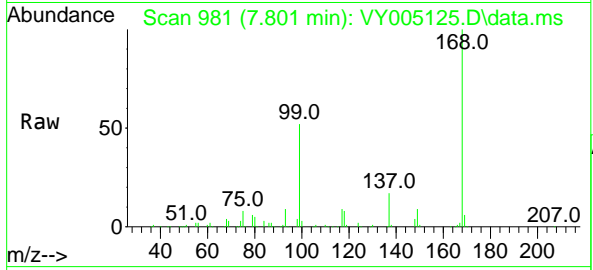
Quant Time: Jun 12 00:36:35 2021
 Quant Method : Z:\voasrv\HPCHEM1\MSVOA_Y\methods\82Y060221S.M
 Quant Title : SW846 8260
 QLast Update : Thu Jun 03 04:43:33 2021
 Response via : Initial Calibration



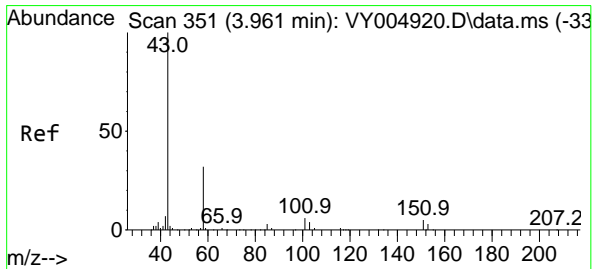
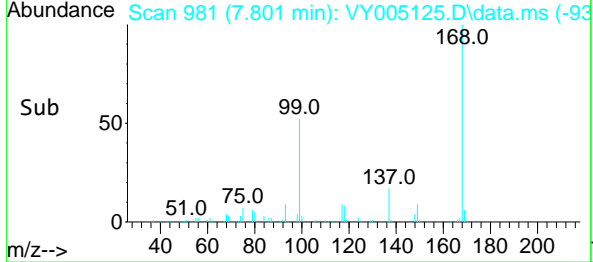
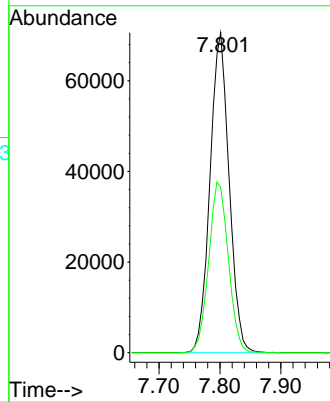


#1
 Pentafluorobenzene
 Concen: 50.000 ug/l
 RT: 7.801 min Scan# 981
 Delta R.T. 0.000 min
 Lab File: VY005125.D
 Acq: 11 Jun 2021 15:30

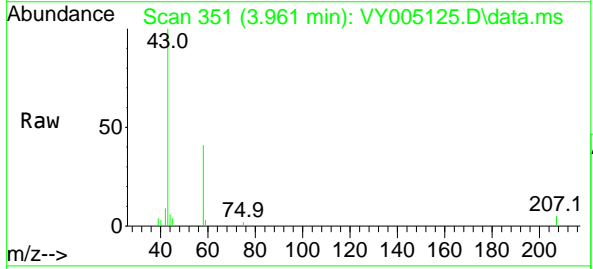
Instrument :
 MSVOA_Y
 ClientSampleId :
 0242-AMND-COMP-G(CL-07)



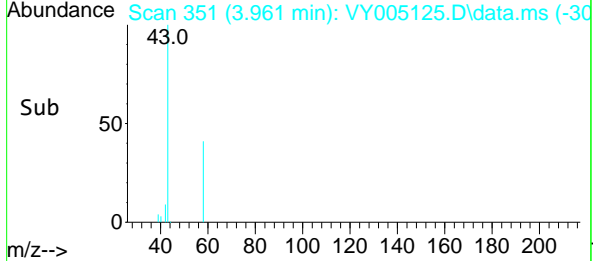
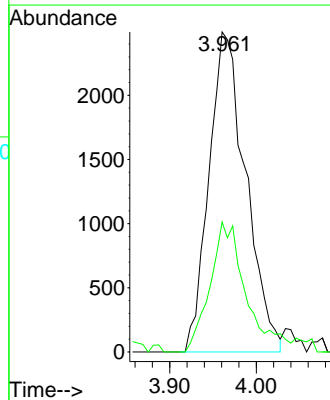
Tgt Ion:168 Resp: 153826
 Ion Ratio Lower Upper
 168 100
 99 51.6 43.9 65.9

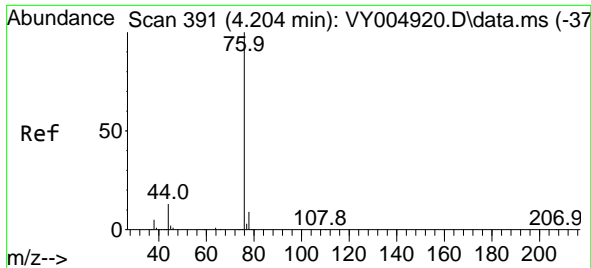


#16
 Acetone
 Concen: 18.803 ug/l
 RT: 3.961 min Scan# 351
 Delta R.T. 0.000 min
 Lab File: VY005125.D
 Acq: 11 Jun 2021 15:30



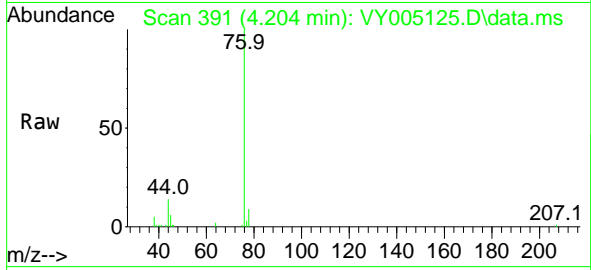
Tgt Ion: 43 Resp: 7361
 Ion Ratio Lower Upper
 43 100
 58 40.6 25.3 37.9#



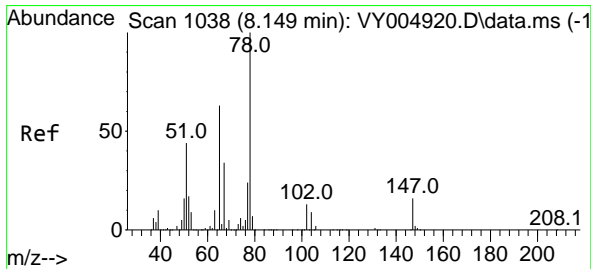
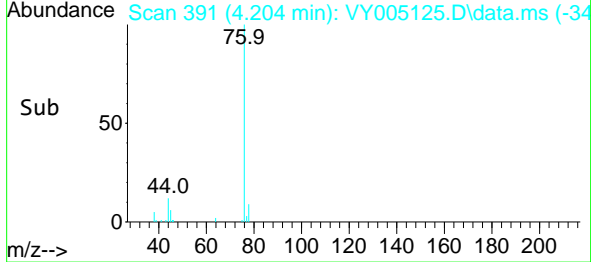
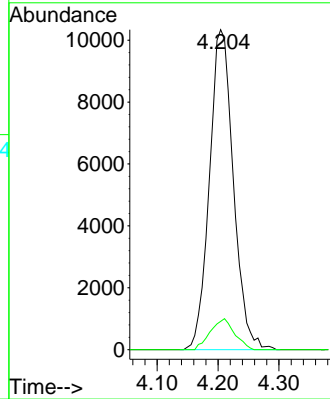


#17
 Carbon Disulfide
 Concen: 5.807 ug/l
 RT: 4.204 min Scan# 391
 Delta R.T. 0.000 min
 Lab File: VY005125.D
 Acq: 11 Jun 2021 15:30

Instrument :
 MSVOA_Y
 ClientSampled :
 0242-AMND-COMP-G(CL-07)

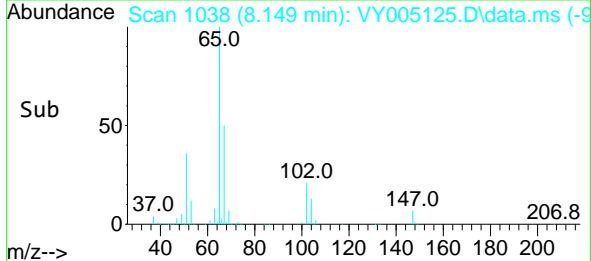
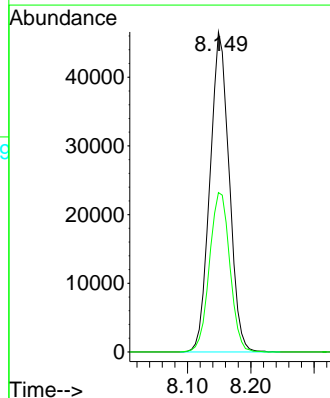
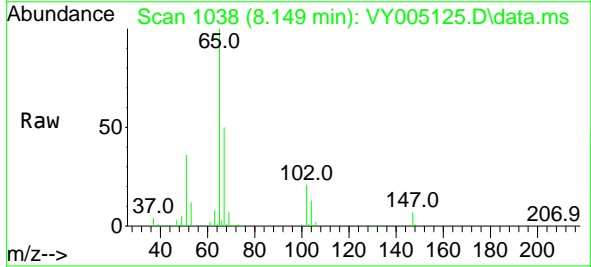


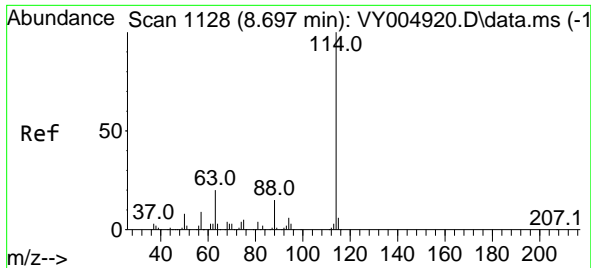
Tgt Ion: 76 Resp: 28230
 Ion Ratio Lower Upper
 76 100
 78 8.8 7.6 11.4



#33
 1,2-Dichloroethane-d4
 Concen: 60.402 ug/l
 RT: 8.149 min Scan# 1038
 Delta R.T. 0.000 min
 Lab File: VY005125.D
 Acq: 11 Jun 2021 15:30

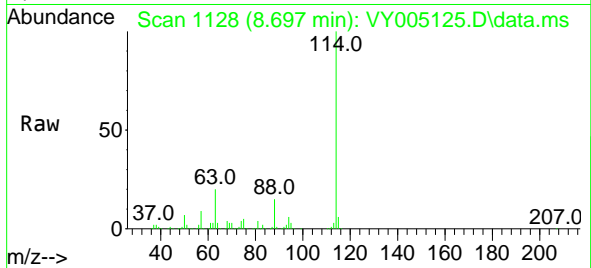
Tgt Ion: 65 Resp: 98226
 Ion Ratio Lower Upper
 65 100
 67 52.8 0.0 110.6





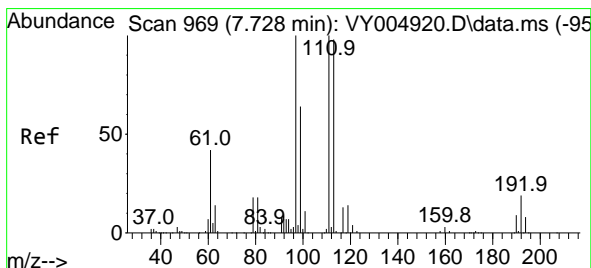
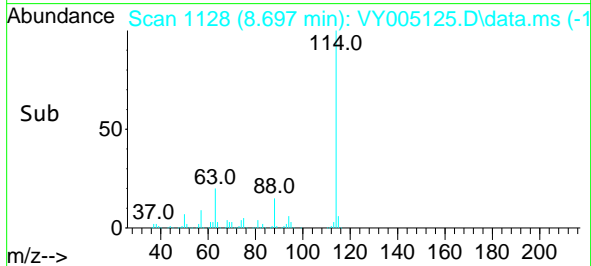
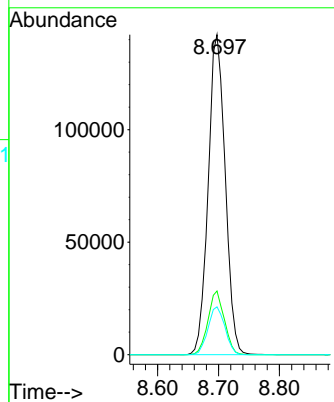
#34
 1,4-Difluorobenzene
 Concen: 50.000 ug/l
 RT: 8.697 min Scan# 1128
 Delta R.T. 0.000 min
 Lab File: VY005125.D
 Acq: 11 Jun 2021 15:30

Instrument :
 MSVOA_Y
 ClientSampled :
 0242-AMND-COMP-G(CL-07)



Tgt Ion:114 Resp: 276112

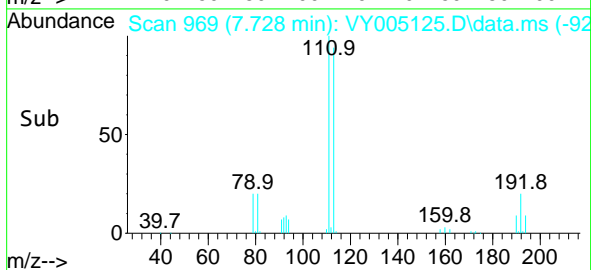
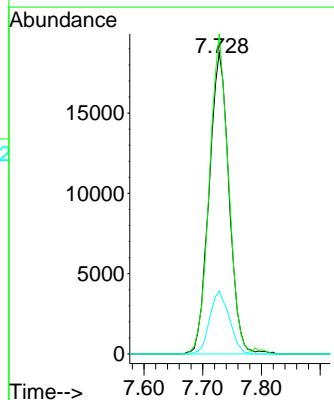
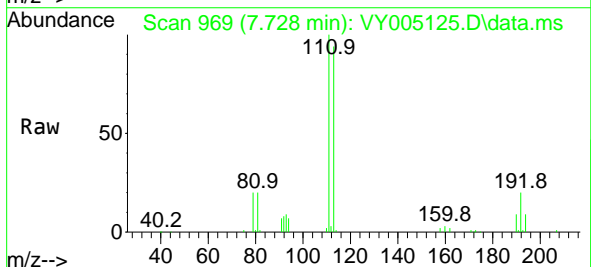
Ion	Ratio	Lower	Upper
114	100		
63	19.9	0.0	41.0
88	14.9	0.0	30.6

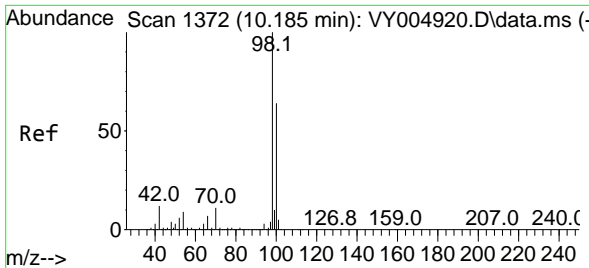


#35
 Dibromofluoromethane
 Concen: 29.761 ug/l
 RT: 7.728 min Scan# 969
 Delta R.T. 0.000 min
 Lab File: VY005125.D
 Acq: 11 Jun 2021 15:30

Tgt Ion:113 Resp: 44210

Ion	Ratio	Lower	Upper
113	100		
111	101.4	81.8	122.8
192	20.5	15.3	22.9

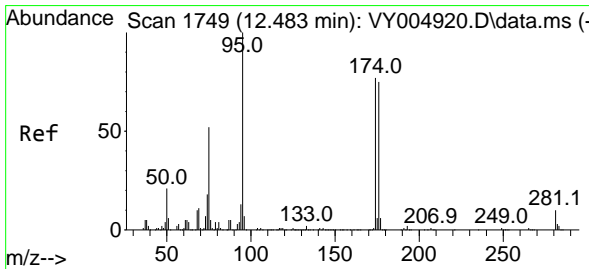
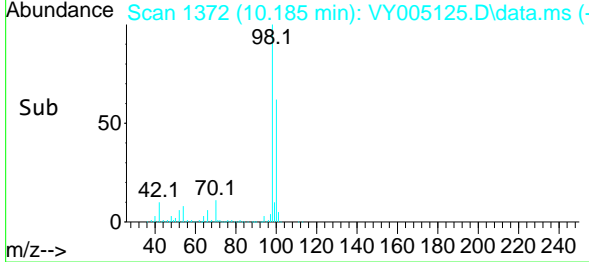
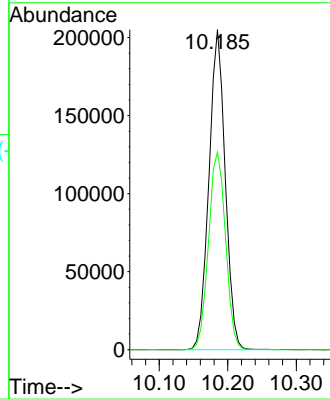
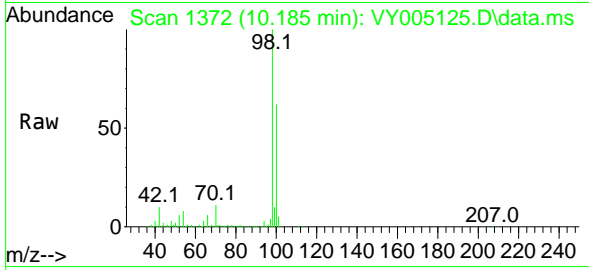




#50
 Toluene-d8
 Concen: 54.853 ug/l
 RT: 10.185 min Scan# 1372
 Delta R.T. 0.000 min
 Lab File: VY005125.D
 Acq: 11 Jun 2021 15:30

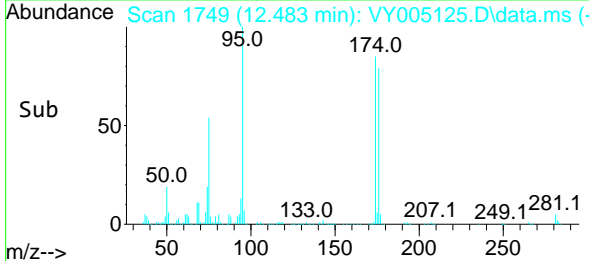
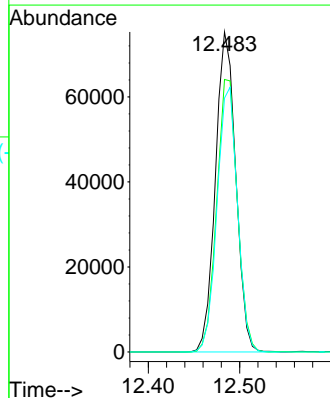
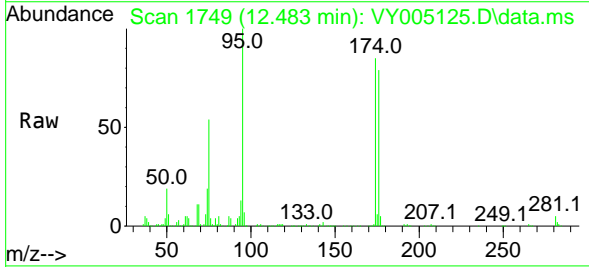
Instrument :
 MSVOA_Y
 ClientSampleId :
 0242-AMND-COMP-G(CL-07)

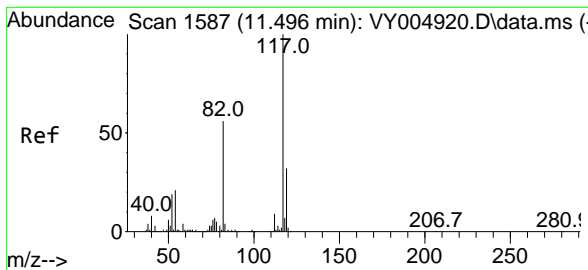
Tgt Ion: 98 Resp: 338419
 Ion Ratio Lower Upper
 98 100
 100 64.6 51.8 77.6



#62
 4-Bromofluorobenzene
 Concen: 54.814 ug/l
 RT: 12.483 min Scan# 1749
 Delta R.T. 0.000 min
 Lab File: VY005125.D
 Acq: 11 Jun 2021 15:30

Tgt Ion: 95 Resp: 116306
 Ion Ratio Lower Upper
 95 100
 174 86.5 0.0 160.8
 176 83.2 0.0 155.6



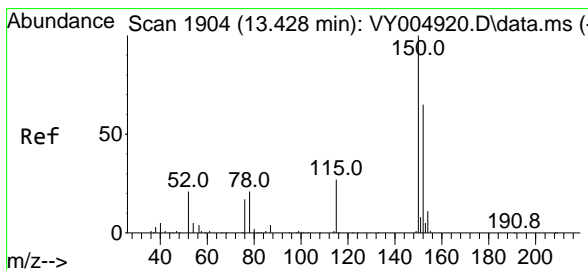
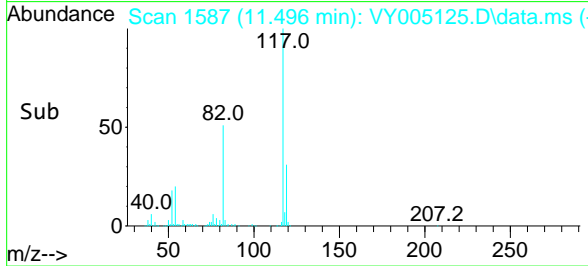
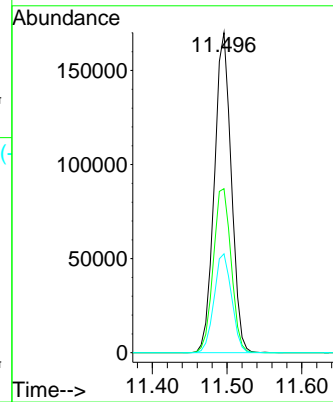
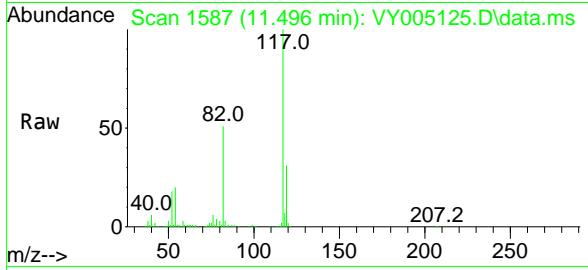


#63
 Chlorobenzene-d5
 Concen: 50.000 ug/l
 RT: 11.496 min Scan# 1587
 Delta R.T. 0.000 min
 Lab File: VY005125.D
 Acq: 11 Jun 2021 15:30

Instrument :
 MSVOA_Y
 ClientSampleId :
 0242-AMND-COMP-G(CL-07)

Tgt Ion:117 Resp: 268537

Ion	Ratio	Lower	Upper
117	100		
82	51.3	44.8	67.2
119	30.9	25.2	37.8



#72
 1,4-Dichlorobenzene-d4
 Concen: 50.000 ug/l
 RT: 13.428 min Scan# 1904
 Delta R.T. 0.000 min
 Lab File: VY005125.D
 Acq: 11 Jun 2021 15:30

Tgt Ion:152 Resp: 128608

Ion	Ratio	Lower	Upper
152	100		
115	58.5	29.9	89.7
150	159.2	0.0	347.8

