

Data Path : Z:\voasrv\HPCHEM1\MSVOA_Y\Data\VY061722\
 Data File : VY009227.D
 Acq On : 17 Jun 2022 15:18
 Operator : KP/MD
 Sample : N3383-05
 Misc : 7.26g/5.0mL/MSVOA_Y/SOIL
 ALS Vial : 15 Sample Multiplier: 1

Instrument :
 MSVOA_Y
 ClientSampleId :

Quant Time: Jun 17 22:54:01 2022
 Quant Method : Z:\voasrv\HPCHEM1\MSVOA_Y\methods\82Y061522S.M
 Quant Title : SW846 8260
 QLast Update : Thu Jun 16 02:54:06 2022
 Response via : Initial Calibration

Compound	R.T.	QIon	Response	Conc	Units	Dev(Min)

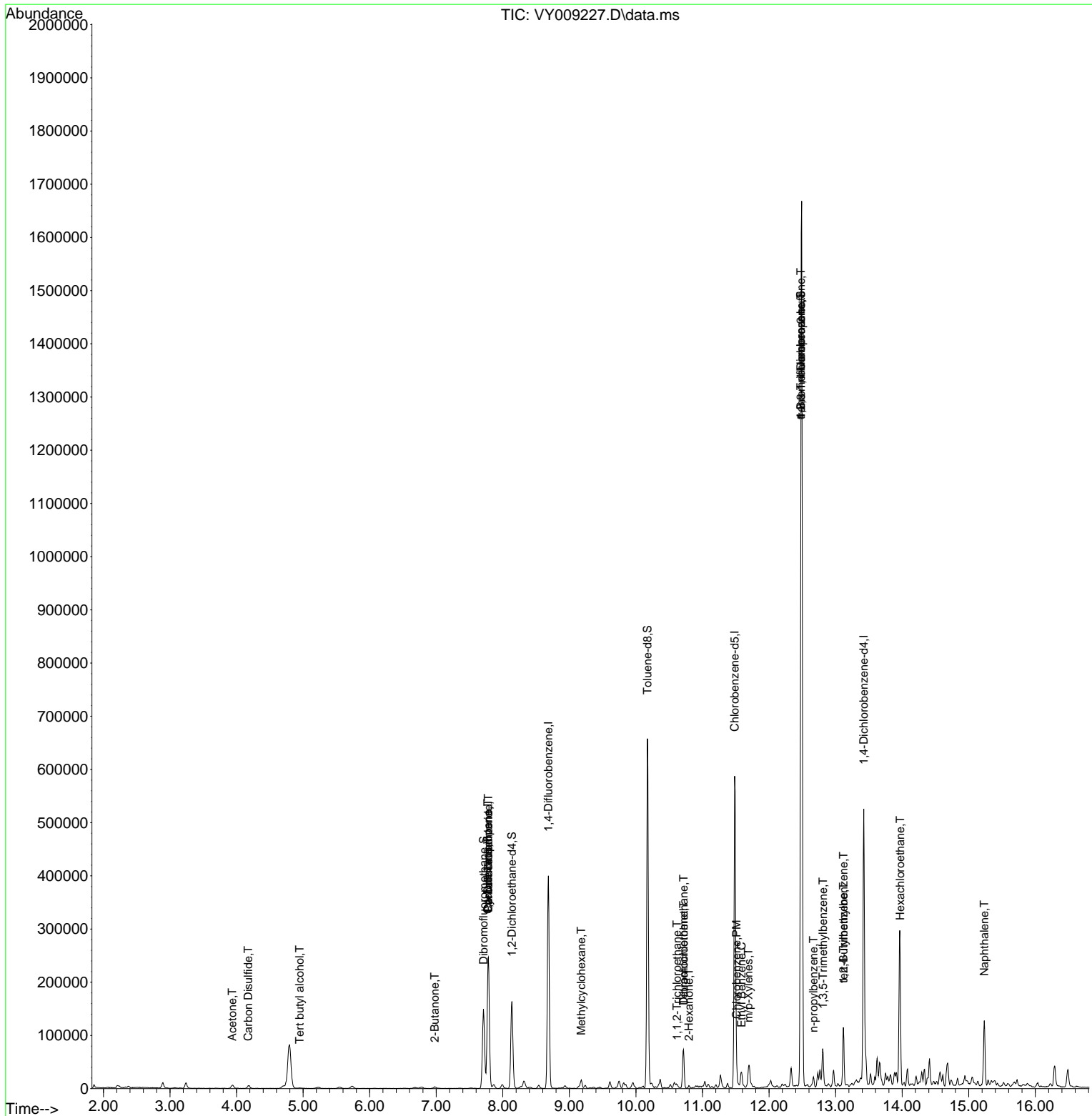
Internal Standards						
1) Pentafluorobenzene	7.783	168	194190	50.000	ug/l	0.00
34) 1,4-Difluorobenzene	8.685	114	338211	50.000	ug/l	0.00
63) Chlorobenzene-d5	11.483	117	315235	50.000	ug/l	0.00
72) 1,4-Dichlorobenzene-d4	13.422	152	128481	50.000	ug/l	0.00
System Monitoring Compounds						
33) 1,2-Dichloroethane-d4	8.137	65	119168	58.747	ug/l	0.00
Spiked Amount	50.000	Range	50 - 163	Recovery	=	117.500%
35) Dibromofluoromethane	7.710	113	101814	48.015	ug/l	0.00
Spiked Amount	50.000	Range	54 - 147	Recovery	=	96.040%
50) Toluene-d8	10.173	98	411252	50.949	ug/l	0.00
Spiked Amount	50.000	Range	49 - 140	Recovery	=	101.900%
62) 4-Bromofluorobenzene	12.477	95	138052	48.129	ug/l	0.00
Spiked Amount	50.000	Range	25 - 144	Recovery	=	96.260%
Target Compounds						
						Qvalue
11) Tert butyl alcohol	4.948	59	1652	5.133	ug/l #	88
13) Acrolein	3.729	56	51	Below Cal	#	1
16) Acetone	3.936	43	9983	19.537	ug/l	92
17) Carbon Disulfide	4.174	76	10654	1.992	ug/l	98
18) Methyl Acetate	4.460	43	149	Below Cal	#	56
20) Methylene Chloride	4.704	84	2543	Below Cal	#	66
25) 2-Butanone	6.978	43	1458	1.803	ug/l	92
31) Cyclohexane	7.777	56	6445	1.774	ug/l #	35
36) 1,1-Dichloropropene	7.777	75	14388	4.411	ug/l #	50
38) Carbon Tetrachloride	7.783	117	18756	5.561	ug/l #	15
39) Methylcyclohexane	9.179	83	5289	1.345	ug/l	90
55) 1,1,2-Trichloroethane	10.618	97	2310	1.175	ug/l #	24
59) 2-Hexanone	10.795	43	2126	1.641	ug/l #	28
60) Dibromochloromethane	10.715	129	11481	4.771	ug/l #	11
64) Tetrachloroethene	10.715	164	12669	4.338	ug/l	96
65) Chlorobenzene	11.514	112	14304	2.095	ug/l	99
67) Ethyl Benzene	11.587	91	15707	1.318	ug/l	97
68) m/p-Xylenes	11.691	106	12072	2.570	ug/l	91
76) 1,2,3-Trichloropropane	12.477	75	82695	58.291	ug/l #	100
78) n-propylbenzene	12.666	91	14194	1.213	ug/l	95
80) 1,3,5-Trimethylbenzene	12.813	105	24372	3.015	ug/l	94
81) trans-1,4-Dichloro-2-b...	12.477	75	82695	116.168	ug/l #	10
83) tert-Butylbenzene	13.117	119	8057	1.134	ug/l #	76
84) 1,2,4-Trimethylbenzene	13.117	105	57395	7.235	ug/l	96
90) Hexachloroethane	13.971	117	2723	1.654	ug/l #	9
95) Naphthalene	15.233	128	95986	17.664	ug/l	99

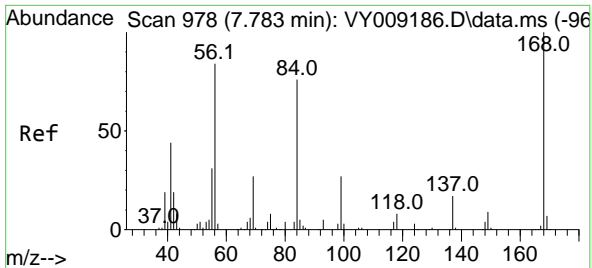
(#) = qualifier out of range (m) = manual integration (+) = signals summed

Data Path : Z:\voasrv\HPCHEM1\MSVOA_Y\Data\VY061722\
 Data File : VY009227.D
 Acq On : 17 Jun 2022 15:18
 Operator : KP/MD
 Sample : N3383-05
 Misc : 7.26g/5.0mL/MSVOA_Y/SOIL
 ALS Vial : 15 Sample Multiplier: 1

Instrument :
 MSVOA_Y
 ClientSampleId :

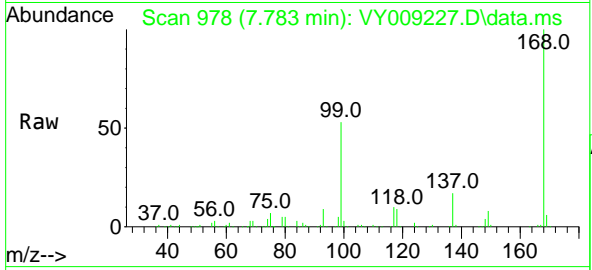
Quant Time: Jun 17 22:54:01 2022
 Quant Method : Z:\voasrv\HPCHEM1\MSVOA_Y\methods\82Y061522S.M
 Quant Title : SW846 8260
 QLast Update : Thu Jun 16 02:54:06 2022
 Response via : Initial Calibration



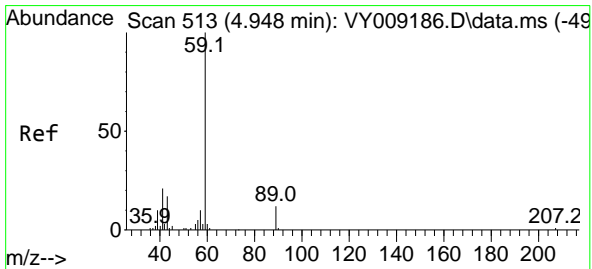
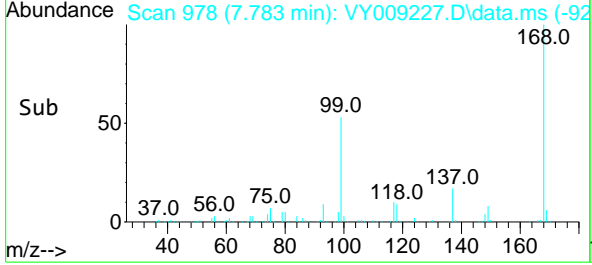
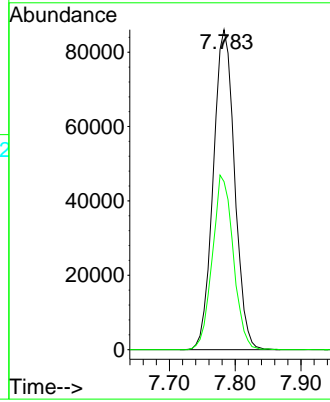


#1
 Pentafluorobenzene
 Concen: 50.000 ug/l
 RT: 7.783 min Scan# 91
 Delta R.T. -0.000 min
 Lab File: VY009227.D
 Acq: 17 Jun 2022 15:18

Instrument :
 MSVOA_Y
 ClientSampleId :

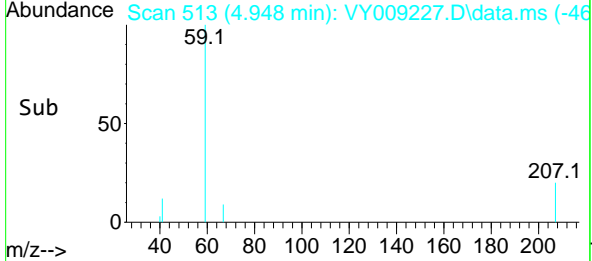
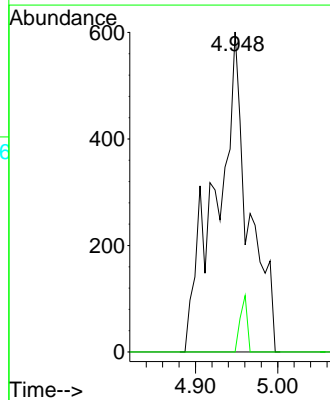
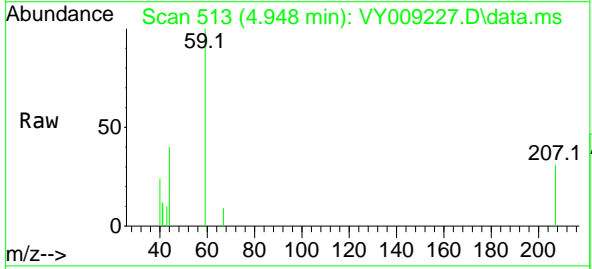


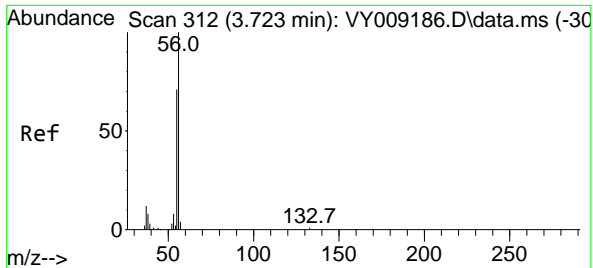
Tgt Ion:168 Resp: 194190
 Ion Ratio Lower Upper
 168 100
 99 52.5 46.9 70.3



#11
 Tert butyl alcohol
 Concen: 5.133 ug/l
 RT: 4.948 min Scan# 513
 Delta R.T. 0.000 min
 Lab File: VY009227.D
 Acq: 17 Jun 2022 15:18

Tgt Ion: 59 Resp: 1652
 Ion Ratio Lower Upper
 59 100
 57 3.8 6.4 9.6#

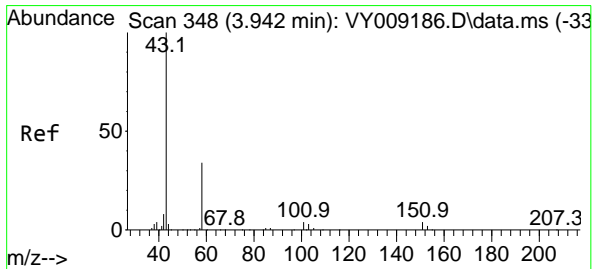
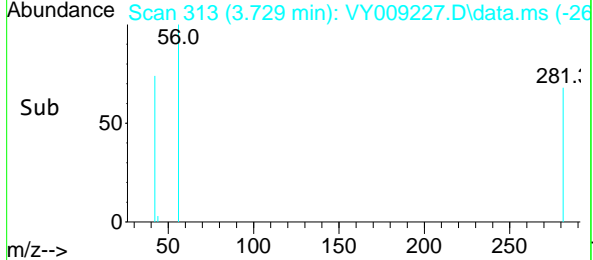
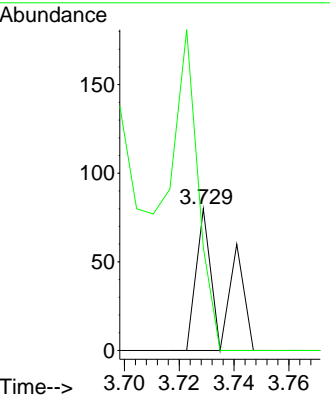
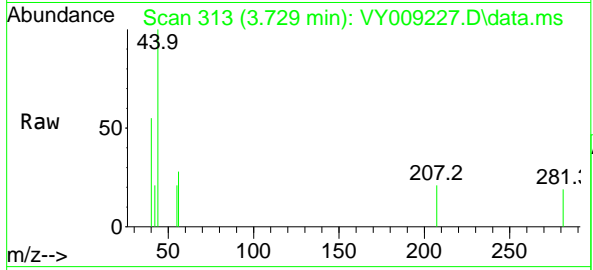




#13
 Acrolein
 Concen: Below Cal
 RT: 3.729 min Scan# 312
 Delta R.T. 0.006 min
 Lab File: VY009227.D
 Acq: 17 Jun 2022 15:18

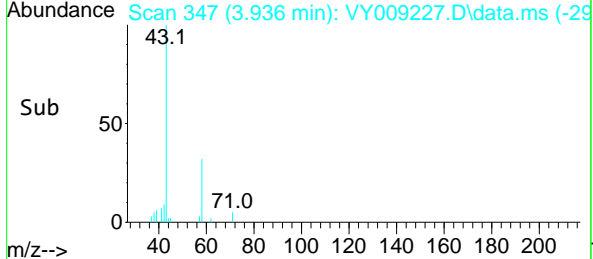
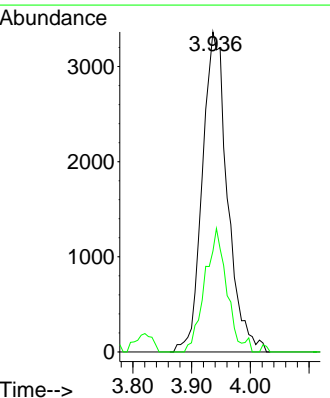
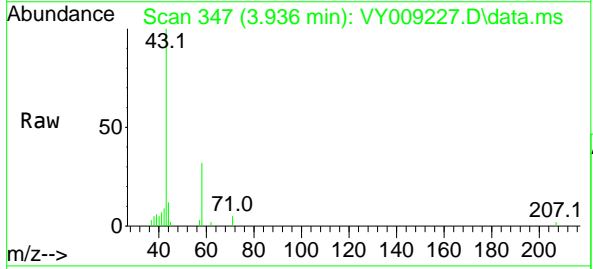
Instrument : MSVOA_Y
 ClientSampleId :

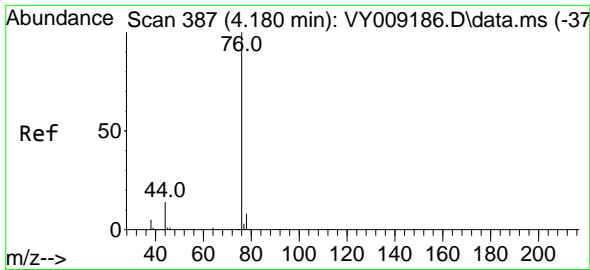
Tgt Ion: 56 Resp: 51
 Ion Ratio Lower Upper
 56 100
 55 237.3 57.6 86.4#



#16
 Acetone
 Concen: 19.537 ug/l
 RT: 3.936 min Scan# 347
 Delta R.T. -0.006 min
 Lab File: VY009227.D
 Acq: 17 Jun 2022 15:18

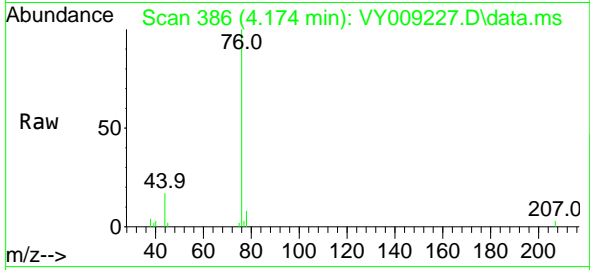
Tgt Ion: 43 Resp: 9983
 Ion Ratio Lower Upper
 43 100
 58 31.5 22.0 33.0



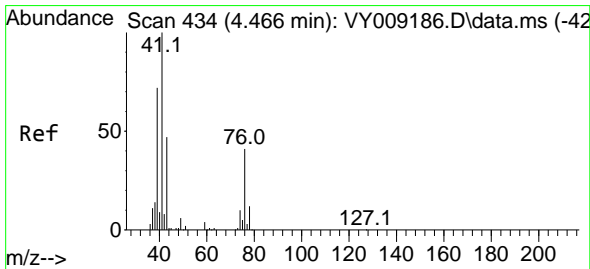
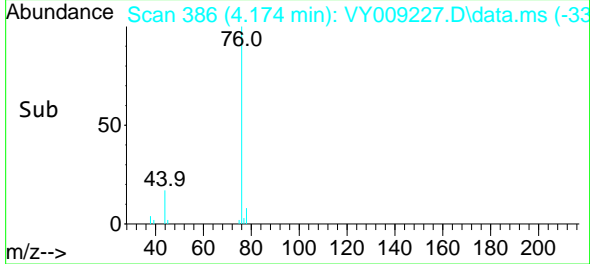
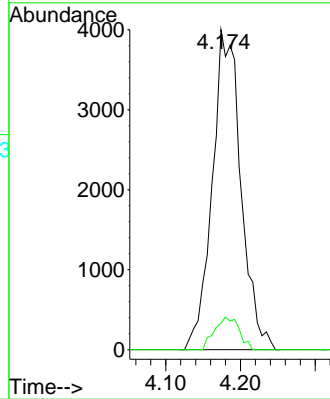


#17
 Carbon Disulfide
 Concen: 1.992 ug/l
 RT: 4.174 min Scan# 31
 Delta R.T. -0.006 min
 Lab File: VY009227.D
 Acq: 17 Jun 2022 15:18

Instrument :
 MSVOA_Y
 ClientSampleId :

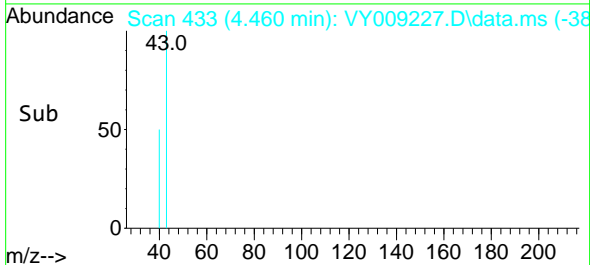
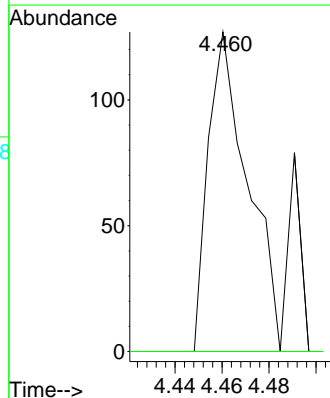
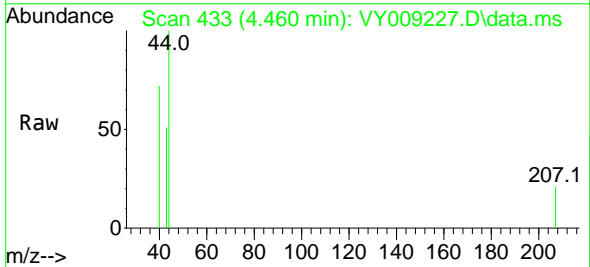


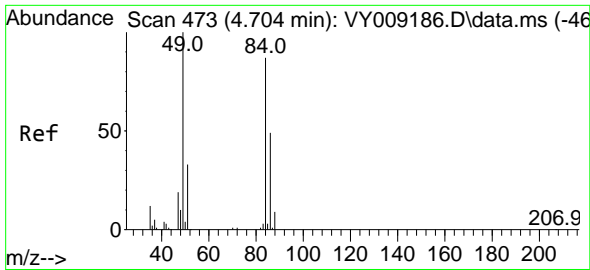
Tgt Ion: 76 Resp: 10654
 Ion Ratio Lower Upper
 76 100
 78 8.3 7.4 11.0



#18
 Methyl Acetate
 Concen: Below Cal
 RT: 4.460 min Scan# 433
 Delta R.T. -0.006 min
 Lab File: VY009227.D
 Acq: 17 Jun 2022 15:18

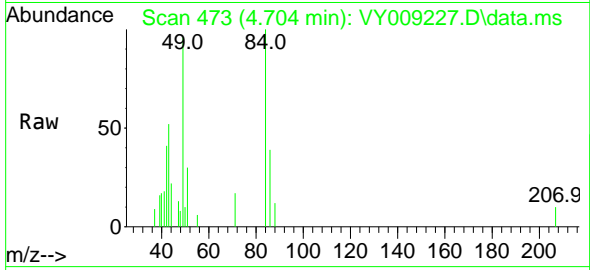
Tgt Ion: 43 Resp: 149
 Ion Ratio Lower Upper
 43 100
 74 0.0 16.6 24.8#



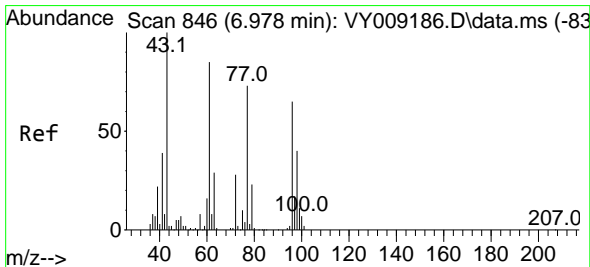
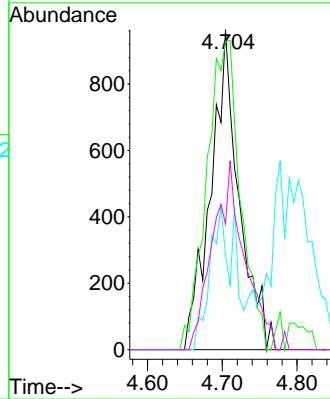
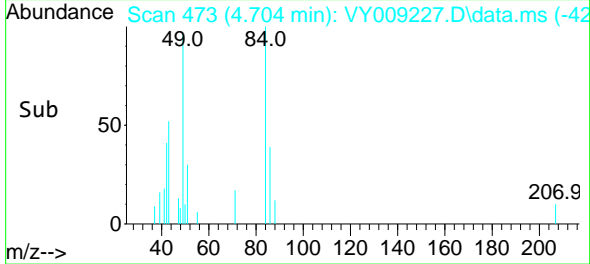


#20
 Methylene Chloride
 Concen: Below Cal
 RT: 4.704 min Scan# 41
 Delta R.T. 0.000 min
 Lab File: VY009227.D
 Acq: 17 Jun 2022 15:18

Instrument :
 MSVOA_Y
 ClientSampleId :

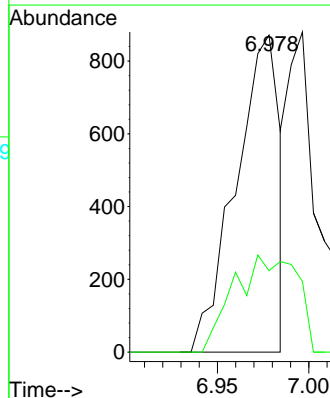
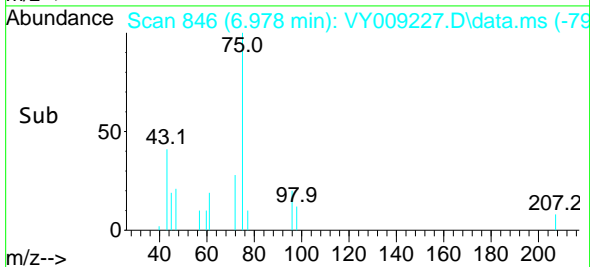
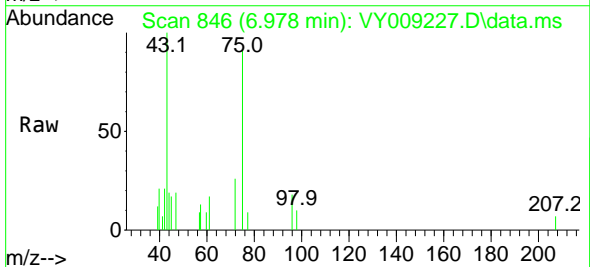


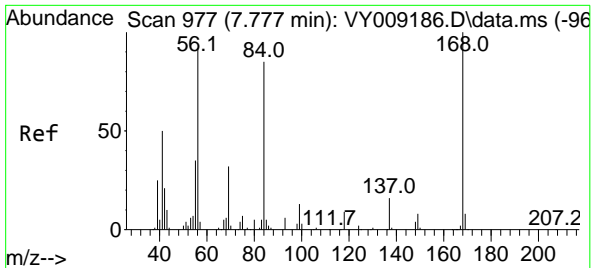
Tgt Ion: 84 Resp: 2543
 Ion Ratio Lower Upper
 84 100
 49 96.3 114.4 171.6#
 51 29.7 35.3 52.9#
 86 39.3 53.7 80.5#



#25
 2-Butanone
 Concen: 1.803 ug/l
 RT: 6.978 min Scan# 846
 Delta R.T. 0.000 min
 Lab File: VY009227.D
 Acq: 17 Jun 2022 15:18

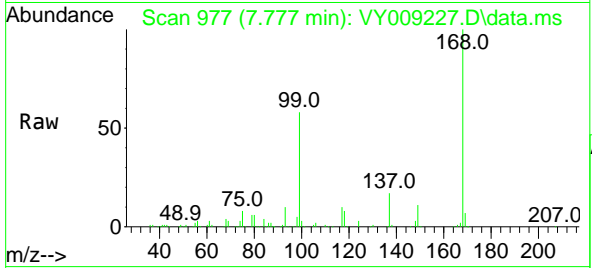
Tgt Ion: 43 Resp: 1458
 Ion Ratio Lower Upper
 43 100
 72 25.7 17.7 26.5



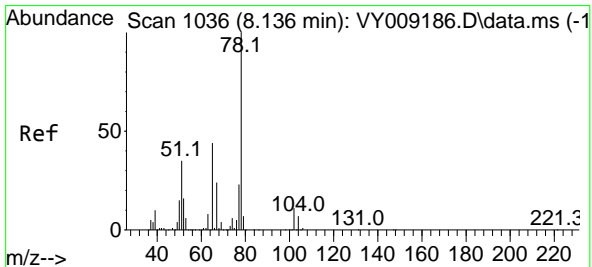
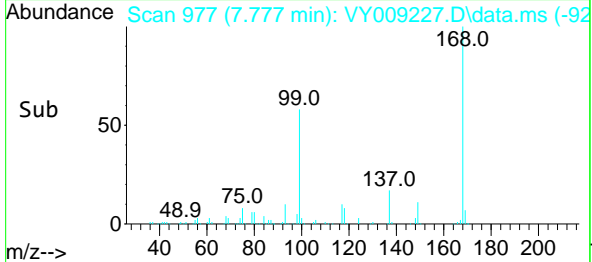
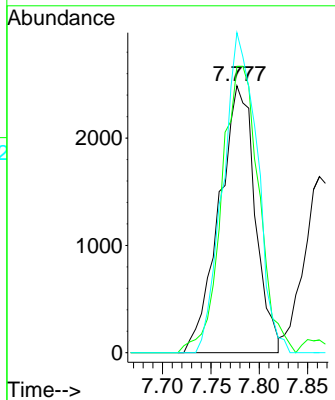


#31
 Cyclohexane
 Concen: 1.774 ug/l
 RT: 7.777 min Scan# 91
 Delta R.T. 0.000 min
 Lab File: VY009227.D
 Acq: 17 Jun 2022 15:18

Instrument :
 MSVOA_Y
 ClientSampleId :

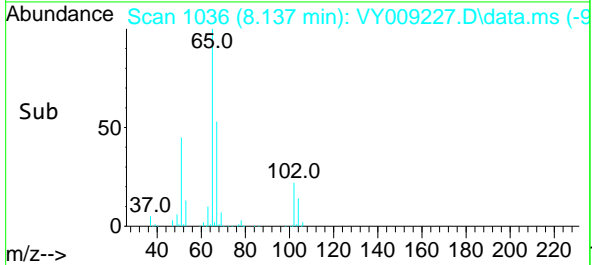
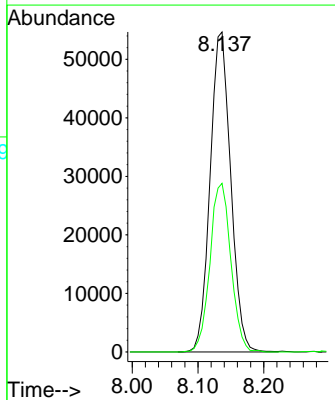
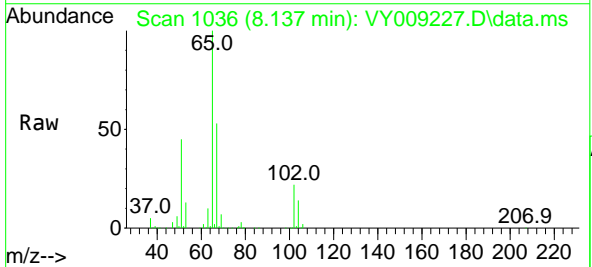


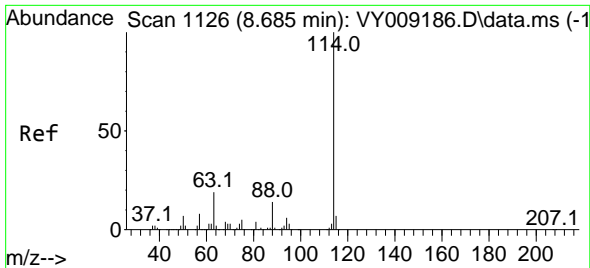
Tgt Ion: 56 Resp: 6445
 Ion Ratio Lower Upper
 56 100
 69 107.3 26.7 40.1#
 84 119.9 67.2 100.8#



#33
 1,2-Dichloroethane-d4
 Concen: 58.747 ug/l
 RT: 8.137 min Scan# 1036
 Delta R.T. 0.000 min
 Lab File: VY009227.D
 Acq: 17 Jun 2022 15:18

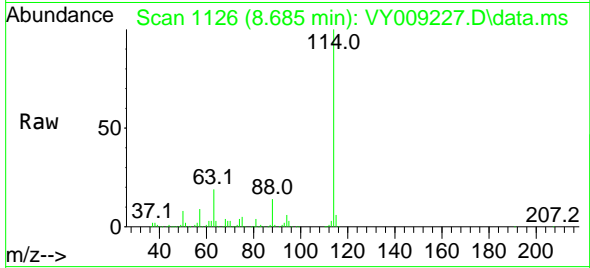
Tgt Ion: 65 Resp: 119168
 Ion Ratio Lower Upper
 65 100
 67 53.6 0.0 99.4



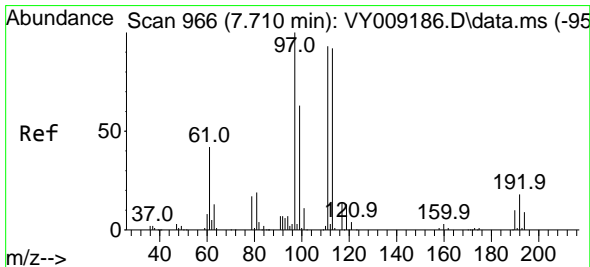
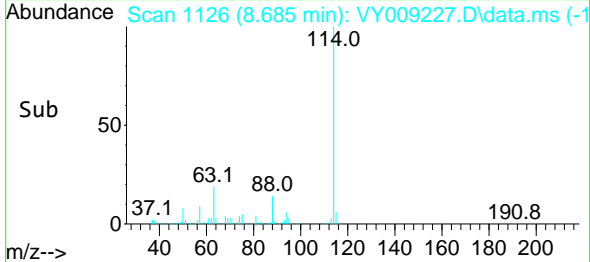
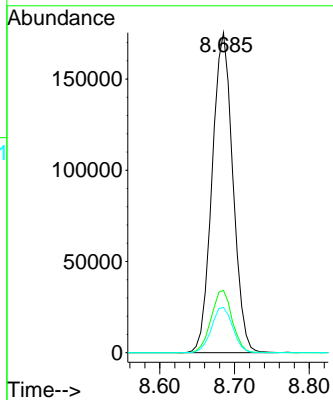


#34
 1,4-Difluorobenzene
 Concen: 50.000 ug/l
 RT: 8.685 min Scan# 1126
 Delta R.T. 0.000 min
 Lab File: VY009227.D
 Acq: 17 Jun 2022 15:18

Instrument :
 MSVOA_Y
 ClientSampleId :

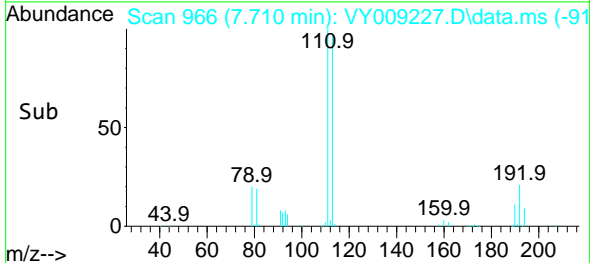
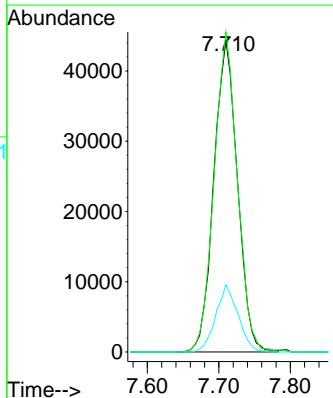
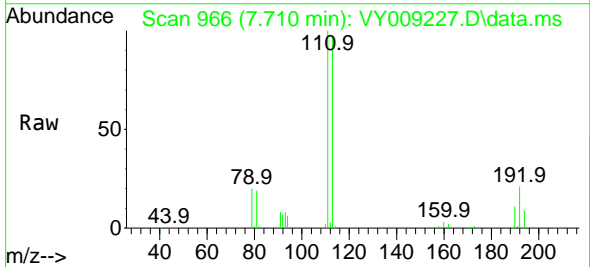


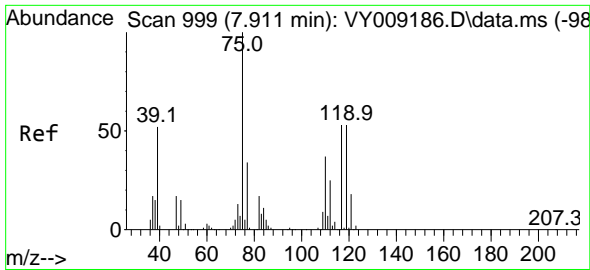
Tgt Ion:114 Resp: 338211
 Ion Ratio Lower Upper
 114 100
 63 19.5 0.0 43.2
 88 14.1 0.0 31.8



#35
 Dibromofluoromethane
 Concen: 48.015 ug/l
 RT: 7.710 min Scan# 966
 Delta R.T. 0.000 min
 Lab File: VY009227.D
 Acq: 17 Jun 2022 15:18

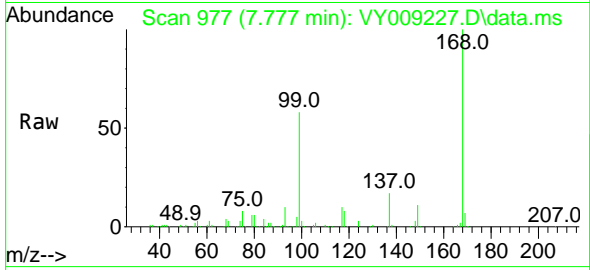
Tgt Ion:113 Resp: 101814
 Ion Ratio Lower Upper
 113 100
 111 101.3 82.6 124.0
 192 20.3 17.6 26.4



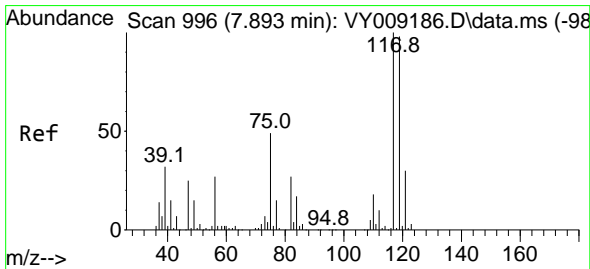
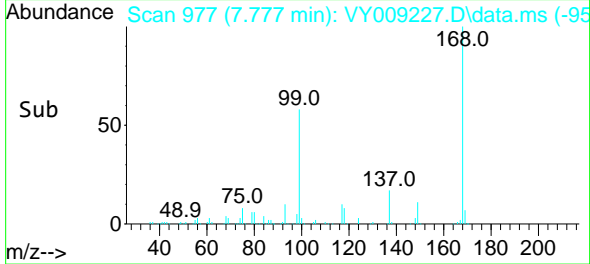
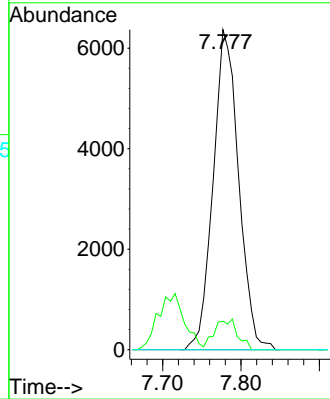


#36
 1,1-Dichloropropene
 Concen: 4.411 ug/l
 RT: 7.777 min Scan# 91
 Delta R.T. -0.134 min
 Lab File: VY009227.D
 Acq: 17 Jun 2022 15:18

Instrument :
 MSVOA_Y
 ClientSampleId :

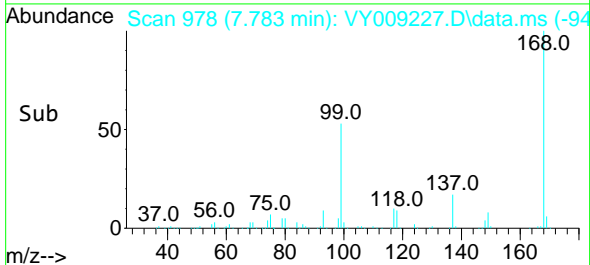
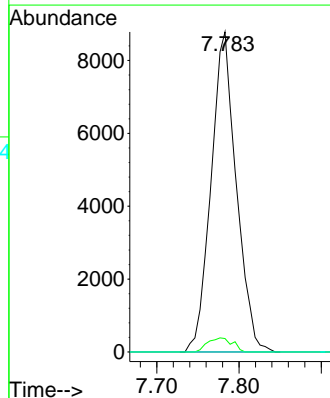
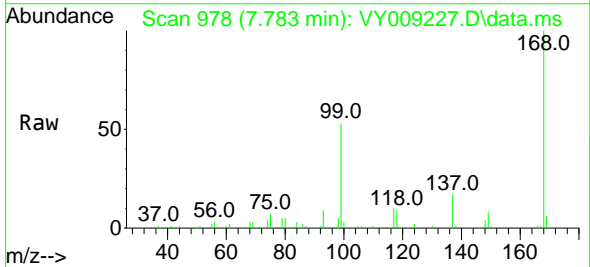


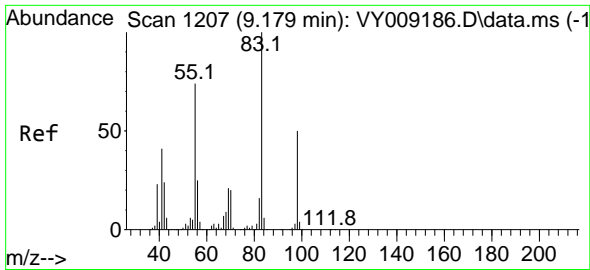
Tgt Ion: 75 Resp: 14388
 Ion Ratio Lower Upper
 75 100
 110 8.6 17.1 51.2#
 77 0.0 24.4 36.6#



#38
 Carbon Tetrachloride
 Concen: 5.561 ug/l
 RT: 7.783 min Scan# 978
 Delta R.T. -0.110 min
 Lab File: VY009227.D
 Acq: 17 Jun 2022 15:18

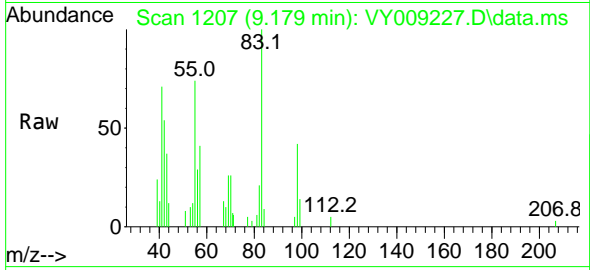
Tgt Ion: 117 Resp: 18756
 Ion Ratio Lower Upper
 117 100
 119 4.2 77.9 116.9#
 121 0.0 24.8 37.2#



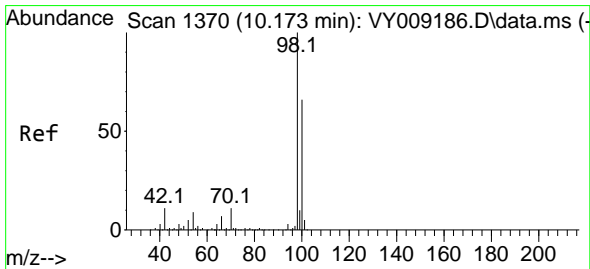
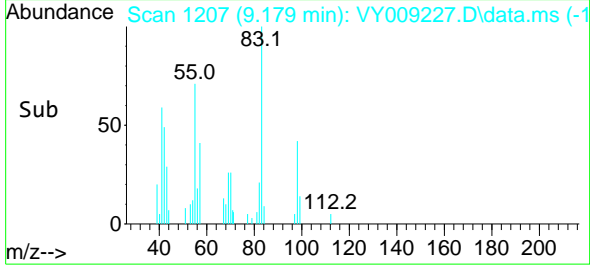
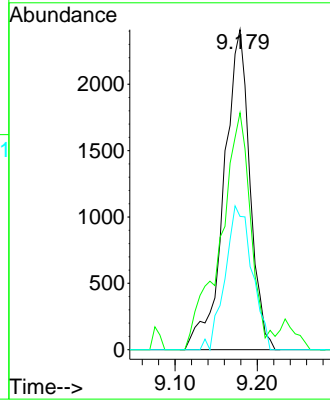


#39
 Methylcyclohexane
 Concen: 1.345 ug/l
 RT: 9.179 min Scan# 111
 Delta R.T. 0.000 min
 Lab File: VY009227.D
 Acq: 17 Jun 2022 15:18

Instrument :
 MSVOA_Y
 ClientSampleId :

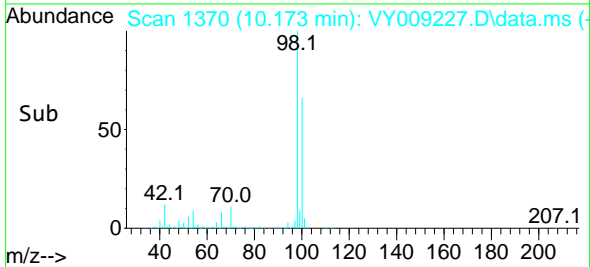
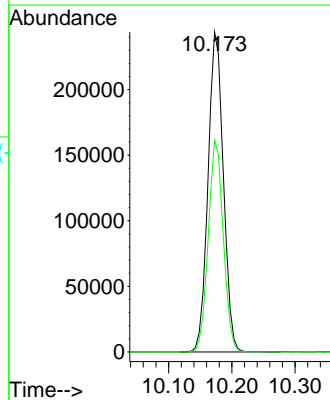
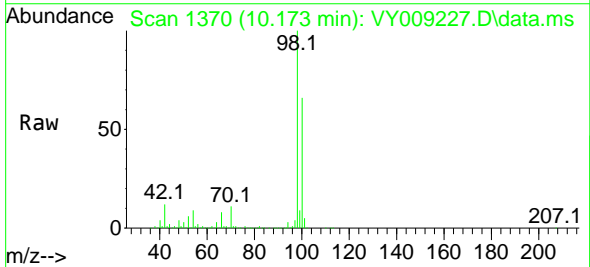


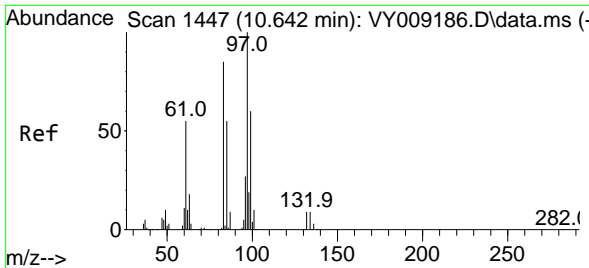
Tgt Ion: 83 Resp: 5289
 Ion Ratio Lower Upper
 83 100
 55 74.0 66.5 99.7
 98 41.6 37.9 56.9



#50
 Toluene-d8
 Concen: 50.949 ug/l
 RT: 10.173 min Scan# 1370
 Delta R.T. 0.000 min
 Lab File: VY009227.D
 Acq: 17 Jun 2022 15:18

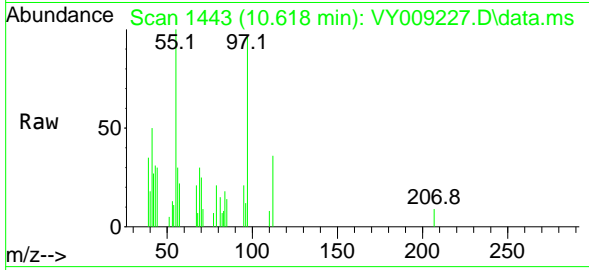
Tgt Ion: 98 Resp: 411252
 Ion Ratio Lower Upper
 98 100
 100 65.0 50.2 75.2





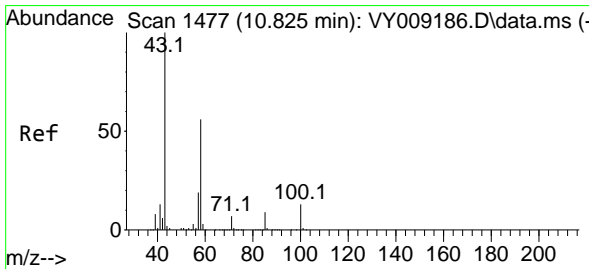
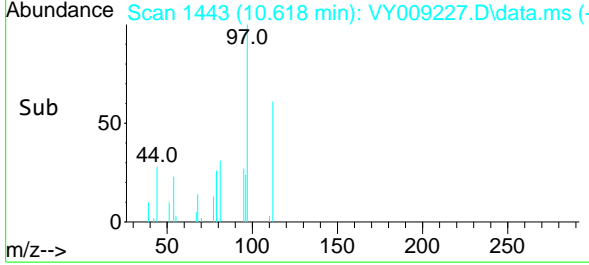
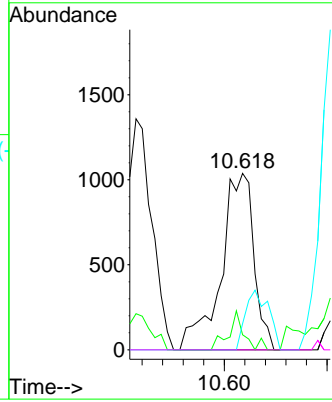
#55
 1,1,2-Trichloroethane
 Concen: 1.175 ug/l
 RT: 10.618 min Scan# 1443
 Delta R.T. -0.024 min
 Lab File: VY009227.D
 Acq: 17 Jun 2022 15:18

Instrument :
 MSVOA_Y
 ClientSampleId :



Tgt Ion: 97 Resp: 2310

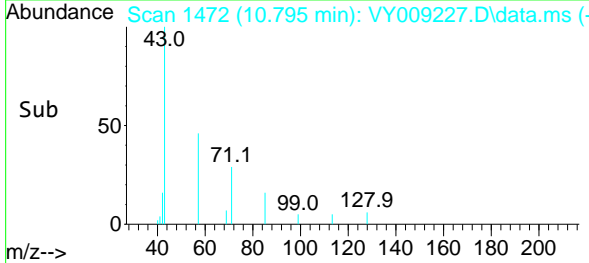
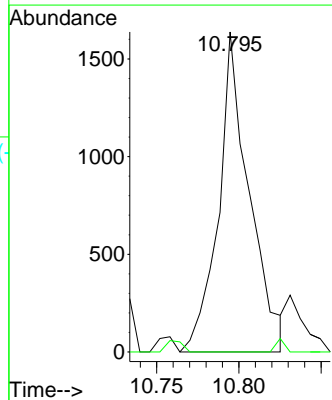
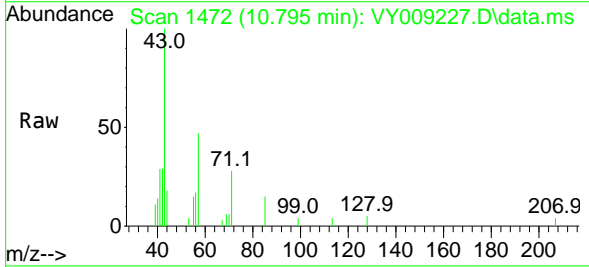
Ion	Ratio	Lower	Upper
97	100		
83	8.5	69.8	104.8#
85	14.8	44.3	66.5#
99	0.0	49.8	74.6#

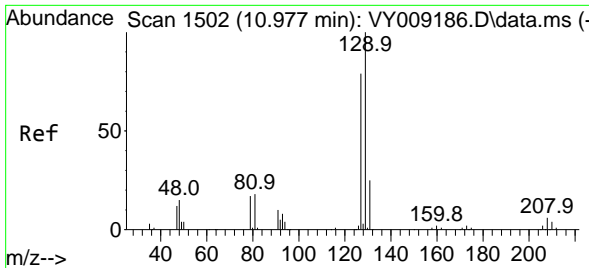


#59
 2-Hexanone
 Concen: 1.641 ug/l
 RT: 10.795 min Scan# 1472
 Delta R.T. -0.030 min
 Lab File: VY009227.D
 Acq: 17 Jun 2022 15:18

Tgt Ion: 43 Resp: 2126

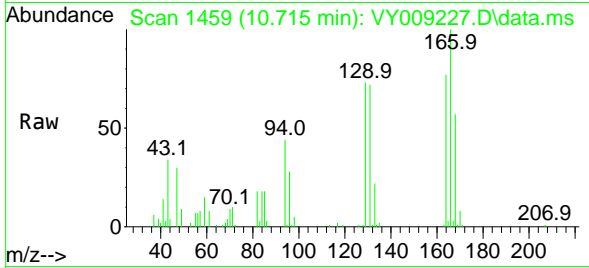
Ion	Ratio	Lower	Upper
43	100		
58	0.0	24.4	73.4#



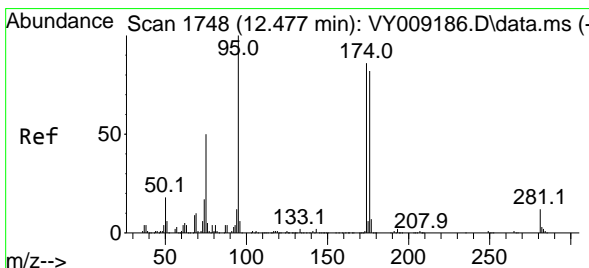
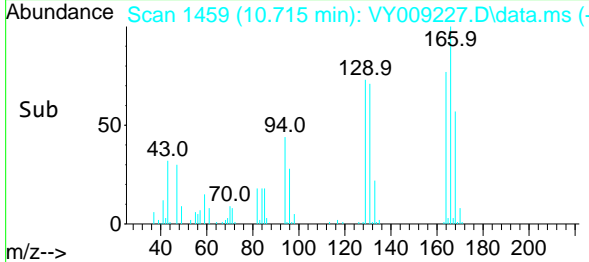
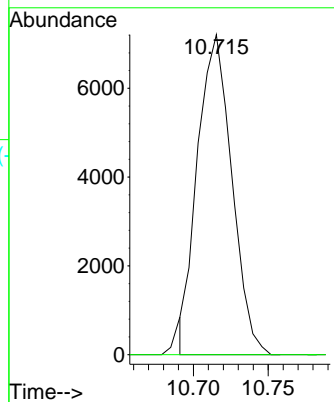


#60
 Dibromochloromethane
 Concen: 4.771 ug/l
 RT: 10.715 min Scan# 1459
 Delta R.T. -0.262 min
 Lab File: VY009227.D
 Acq: 17 Jun 2022 15:18

Instrument : MSVOA_Y
 ClientSampleId :

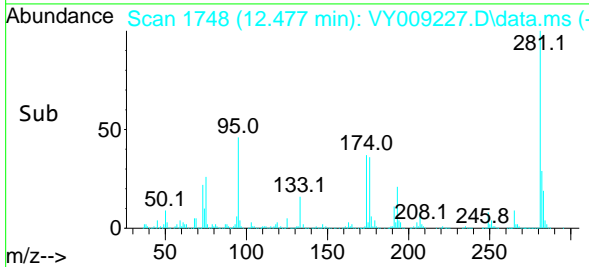
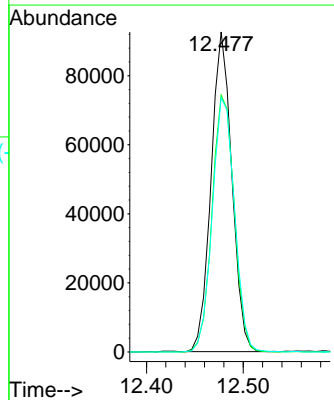
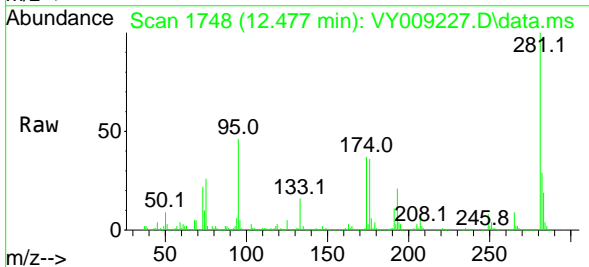


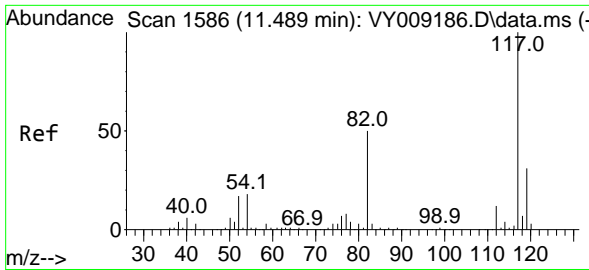
Tgt Ion: 129 Resp: 11481
 Ion Ratio Lower Upper
 129 100
 127 0.0 38.7 116.1#



#62
 4-Bromofluorobenzene
 Concen: 48.129 ug/l
 RT: 12.477 min Scan# 1748
 Delta R.T. 0.000 min
 Lab File: VY009227.D
 Acq: 17 Jun 2022 15:18

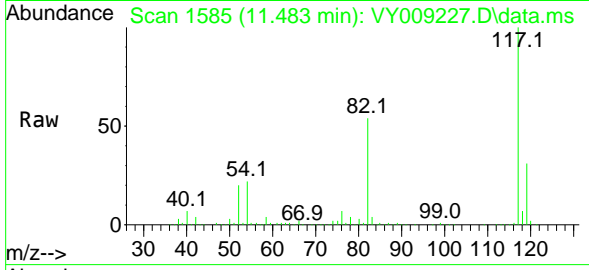
Tgt Ion: 95 Resp: 138052
 Ion Ratio Lower Upper
 95 100
 174 85.4 0.0 177.0
 176 85.3 0.0 175.8





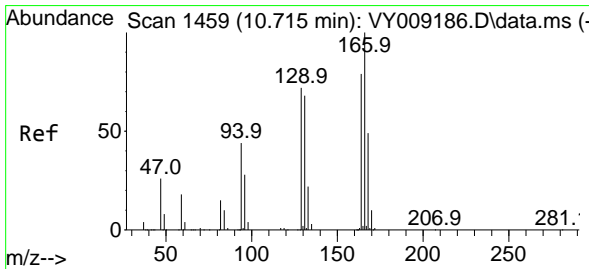
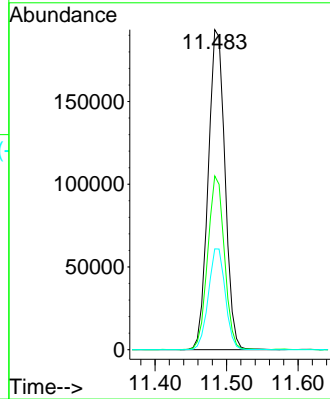
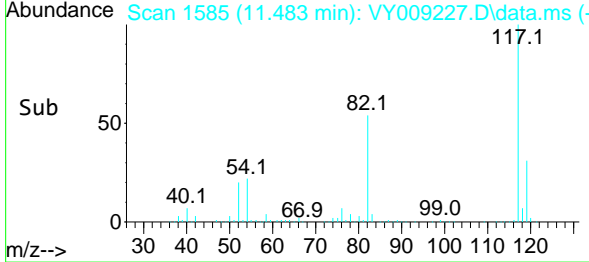
#63
 Chlorobenzene-d5
 Concen: 50.000 ug/l
 RT: 11.483 min Scan# 11
 Delta R.T. -0.006 min
 Lab File: VY009227.D
 Acq: 17 Jun 2022 15:18

Instrument :
 MSVOA_Y
 ClientSampleId :

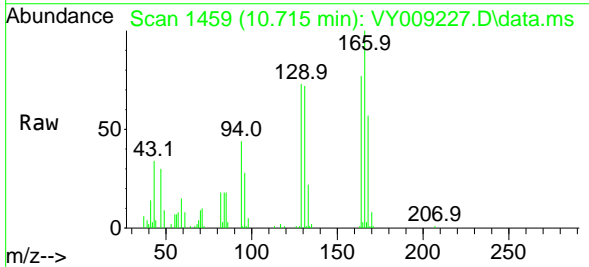


Tgt Ion:117 Resp: 315235

Ion	Ratio	Lower	Upper
117	100		
82	54.3	43.0	64.4
119	31.5	25.4	38.0

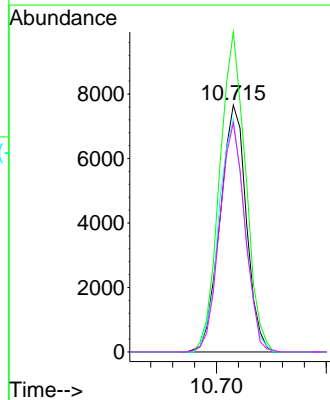
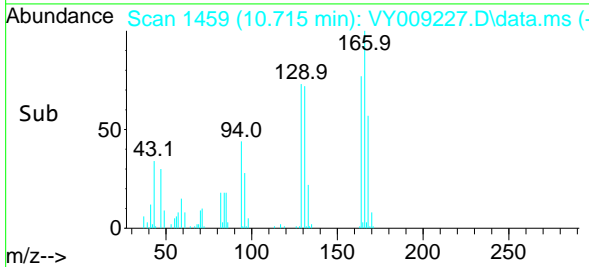


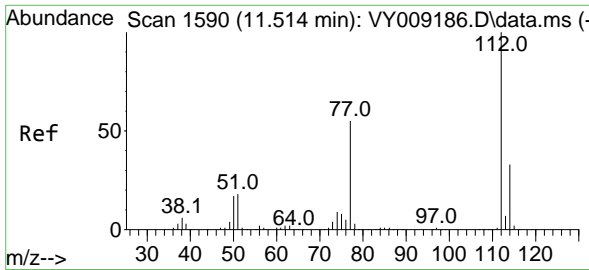
#64
 Tetrachloroethene
 Concen: 4.338 ug/l
 RT: 10.715 min Scan# 1459
 Delta R.T. 0.000 min
 Lab File: VY009227.D
 Acq: 17 Jun 2022 15:18



Tgt Ion:164 Resp: 12669

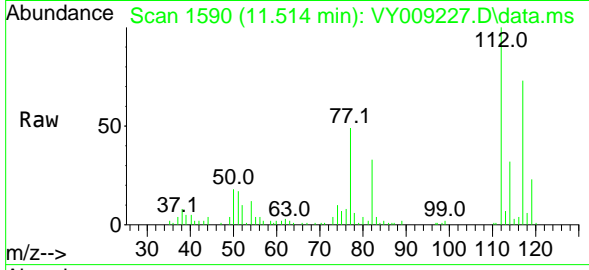
Ion	Ratio	Lower	Upper
164	100		
166	129.6	100.4	150.6
129	94.2	71.4	107.0
131	92.7	70.8	106.2



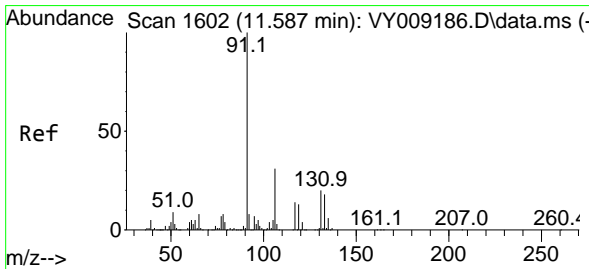
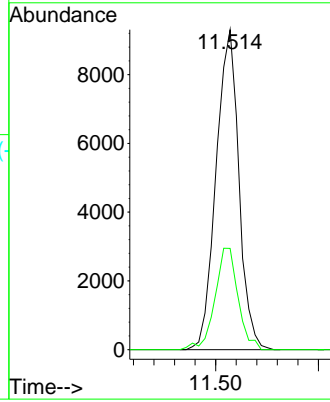
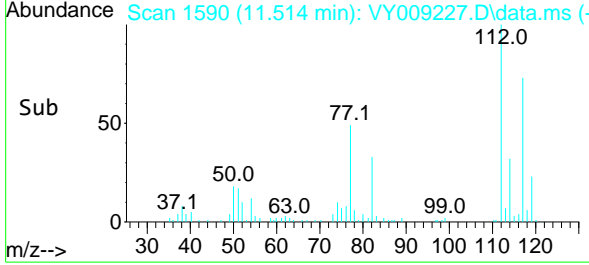


#65
 Chlorobenzene
 Concen: 2.095 ug/l
 RT: 11.514 min Scan# 111
 Delta R.T. 0.000 min
 Lab File: VY009227.D
 Acq: 17 Jun 2022 15:18

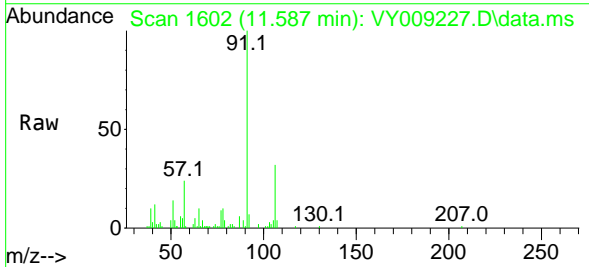
Instrument :
 MSVOA_Y
 ClientSampled :



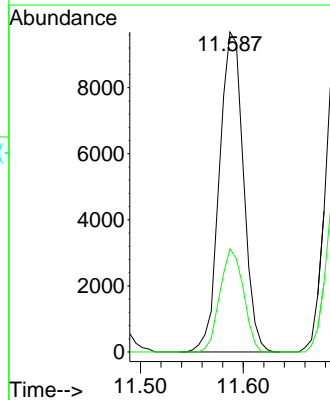
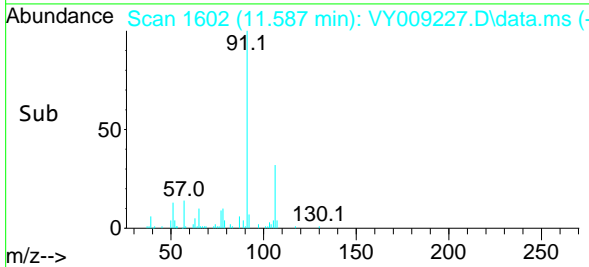
Tgt Ion:112 Resp: 14304
 Ion Ratio Lower Upper
 112 100
 114 31.7 25.8 38.6

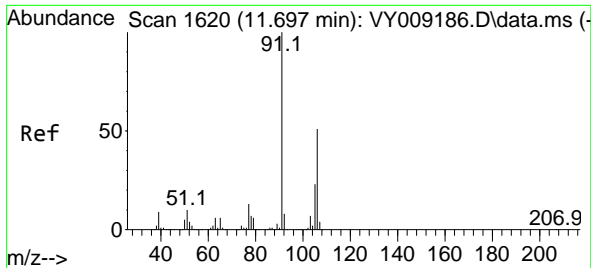


#67
 Ethyl Benzene
 Concen: 1.318 ug/l
 RT: 11.587 min Scan# 1602
 Delta R.T. 0.000 min
 Lab File: VY009227.D
 Acq: 17 Jun 2022 15:18



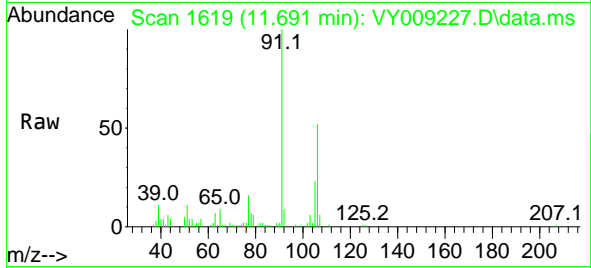
Tgt Ion: 91 Resp: 15707
 Ion Ratio Lower Upper
 91 100
 106 32.2 24.5 36.7



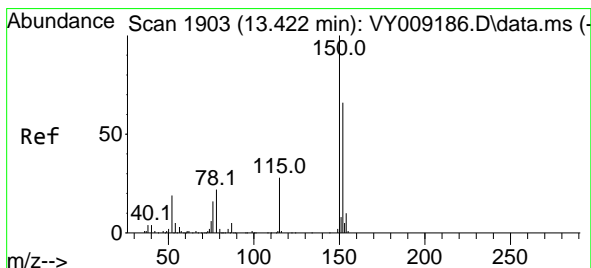
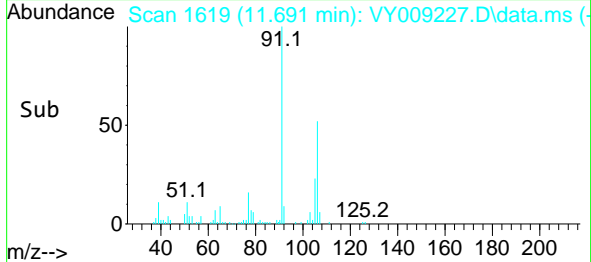
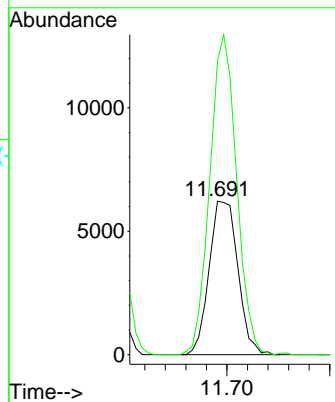


#68
 m/p-Xylenes
 Concen: 2.570 ug/l
 RT: 11.691 min Scan# 11
 Delta R.T. -0.006 min
 Lab File: VY009227.D
 Acq: 17 Jun 2022 15:18

Instrument :
 MSVOA_Y
 ClientSampleId :

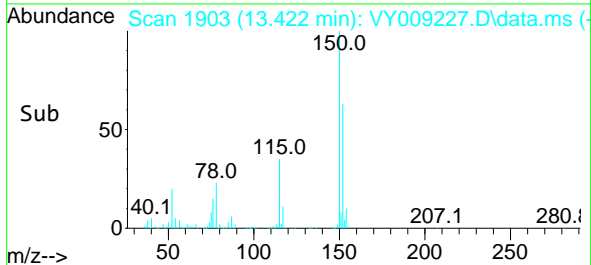
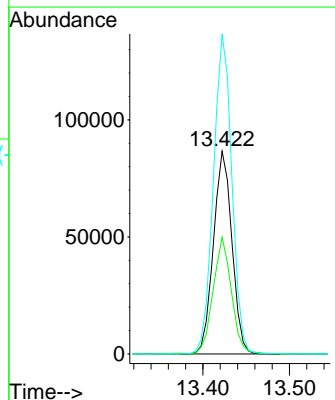
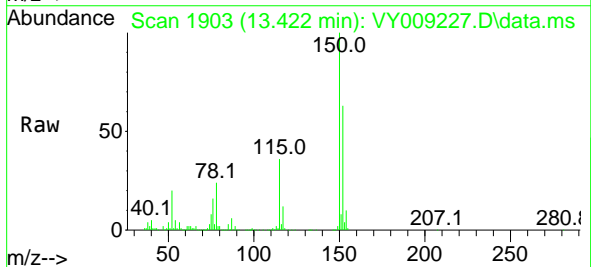


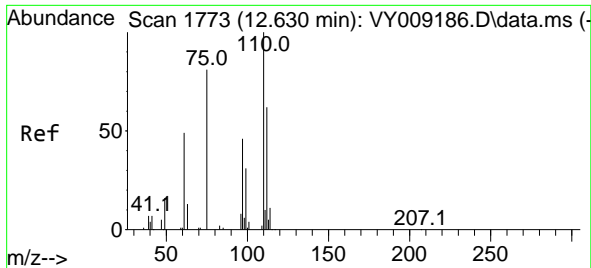
Tgt Ion:106 Resp: 12072
 Ion Ratio Lower Upper
 106 100
 91 194.7 166.6 249.8



#72
 1,4-Dichlorobenzene-d4
 Concen: 50.000 ug/l
 RT: 13.422 min Scan# 1903
 Delta R.T. 0.000 min
 Lab File: VY009227.D
 Acq: 17 Jun 2022 15:18

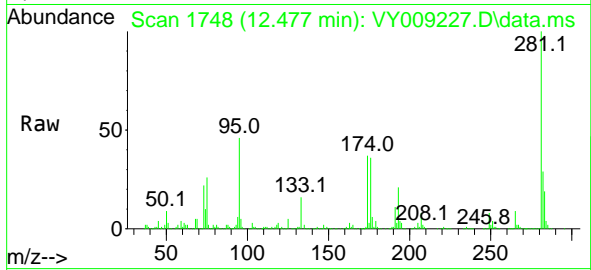
Tgt Ion:152 Resp: 128481
 Ion Ratio Lower Upper
 152 100
 115 56.7 28.2 84.7
 150 157.4 0.0 347.6



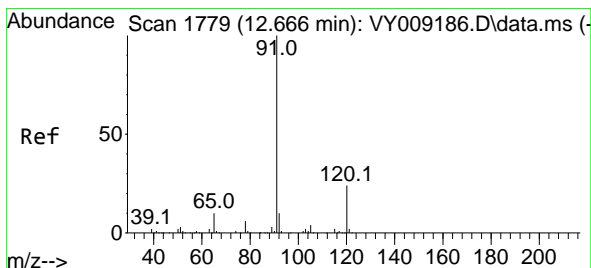
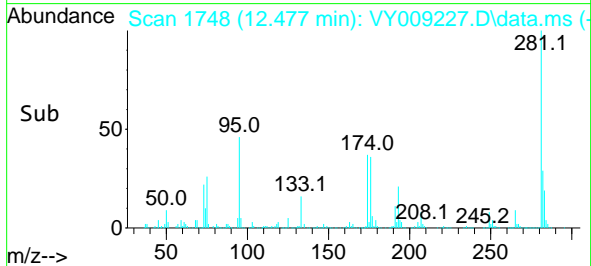
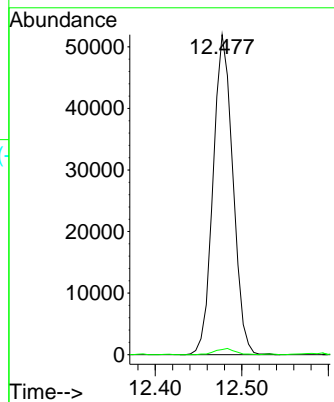


#76
 1,2,3-Trichloropropane
 Concen: 58.291 ug/l
 RT: 12.477 min Scan# 1748
 Delta R.T. -0.152 min
 Lab File: VY009227.D
 Acq: 17 Jun 2022 15:18

Instrument : MSVOA_Y
 ClientSampleId :

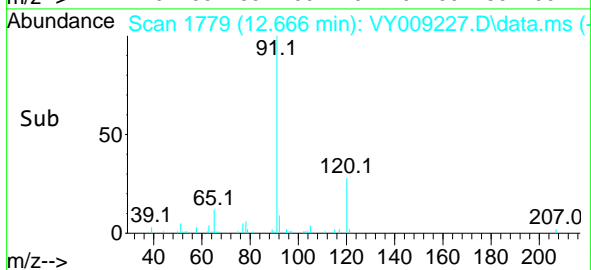
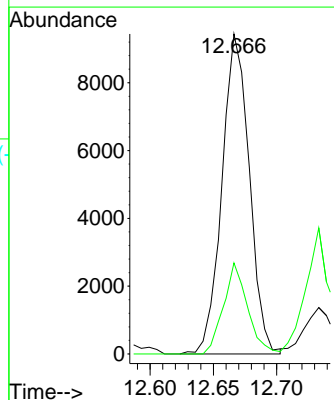
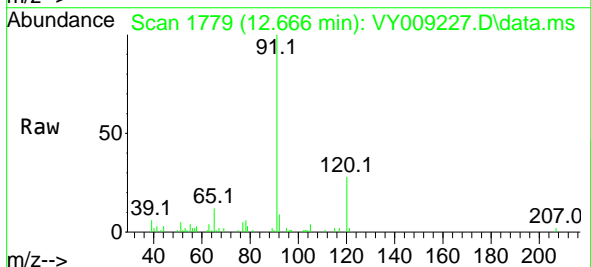


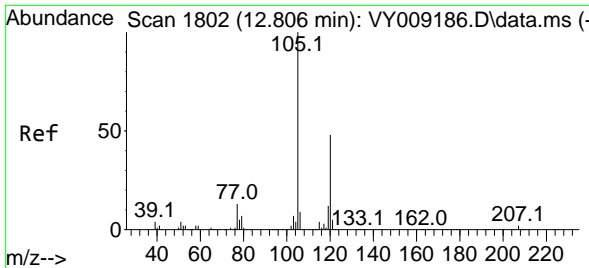
Tgt Ion: 75 Resp: 82695
 Ion Ratio Lower Upper
 75 100
 77 2.0 0.0 0.0#



#78
 n-propylbenzene
 Concen: 1.213 ug/l
 RT: 12.666 min Scan# 1779
 Delta R.T. 0.000 min
 Lab File: VY009227.D
 Acq: 17 Jun 2022 15:18

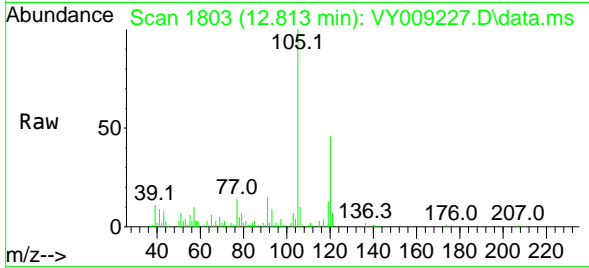
Tgt Ion: 91 Resp: 14194
 Ion Ratio Lower Upper
 91 100
 120 25.1 11.3 33.9



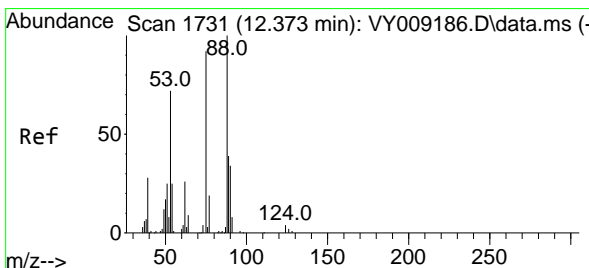
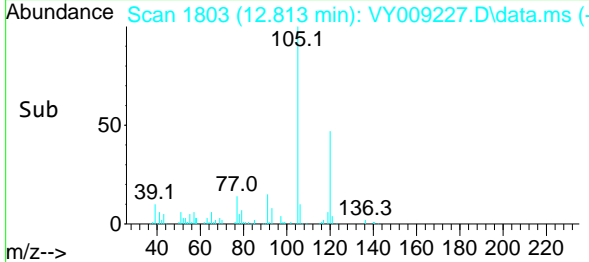
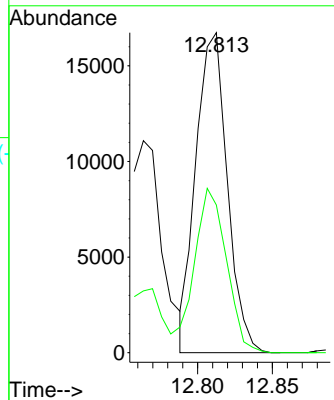


#80
 1,3,5-Trimethylbenzene
 Concen: 3.015 ug/l
 RT: 12.813 min Scan# 1748
 Delta R.T. 0.006 min
 Lab File: VY009227.D
 Acq: 17 Jun 2022 15:18

Instrument : MSVOA_Y
 ClientSampleId :

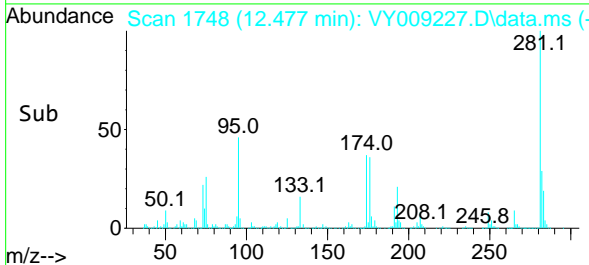
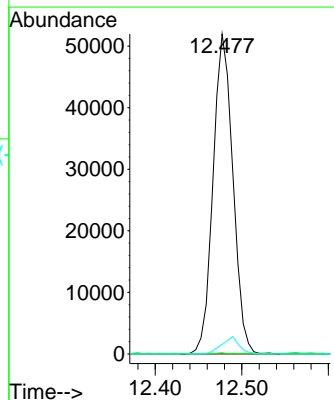
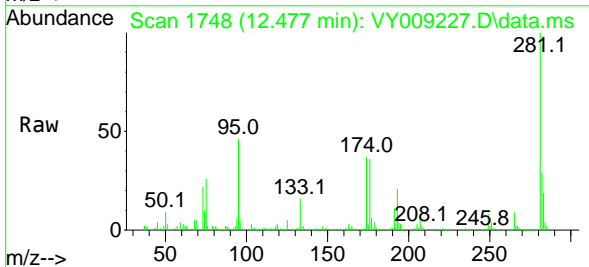


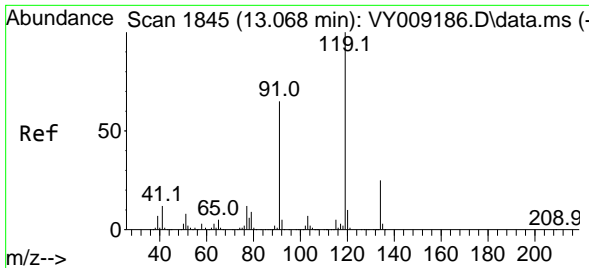
Tgt Ion:105 Resp: 24372
 Ion Ratio Lower Upper
 105 100
 120 52.8 24.4 73.4



#81
 trans-1,4-Dichloro-2-butene
 Concen: 116.168 ug/l
 RT: 12.477 min Scan# 1748
 Delta R.T. 0.104 min
 Lab File: VY009227.D
 Acq: 17 Jun 2022 15:18

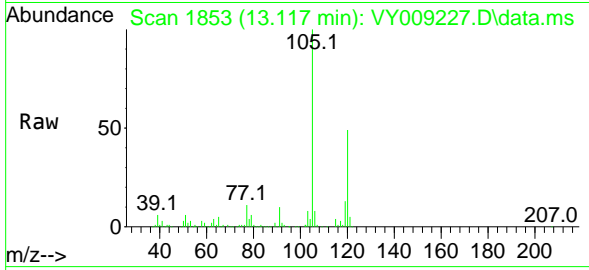
Tgt Ion: 75 Resp: 82695
 Ion Ratio Lower Upper
 75 100
 53 0.2 85.3 127.9#
 89 4.7 37.0 55.4#



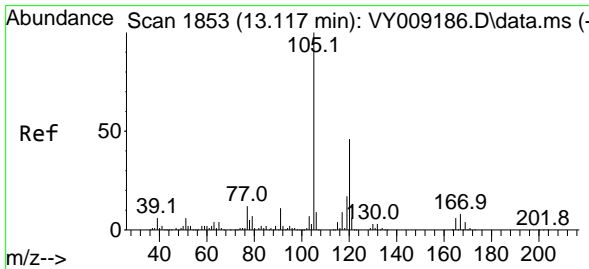
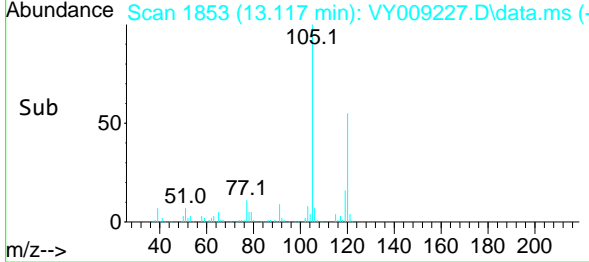
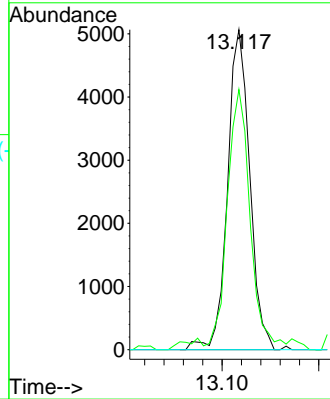


#83
 tert-Butylbenzene
 Concen: 1.134 ug/l
 RT: 13.117 min Scan# 1853
 Delta R.T. 0.049 min
 Lab File: VY009227.D
 Acq: 17 Jun 2022 15:18

Instrument :
 MSVOA_Y
 ClientSampleId :

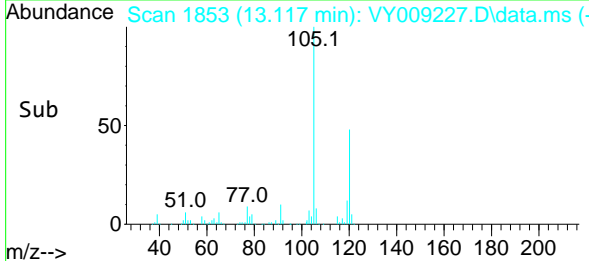
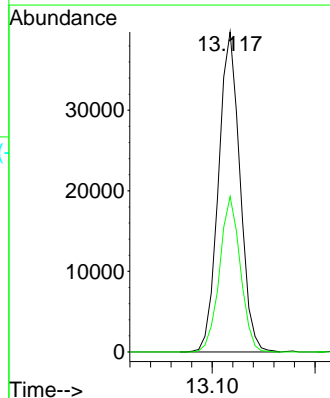
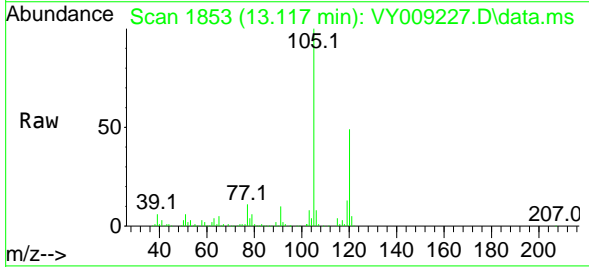


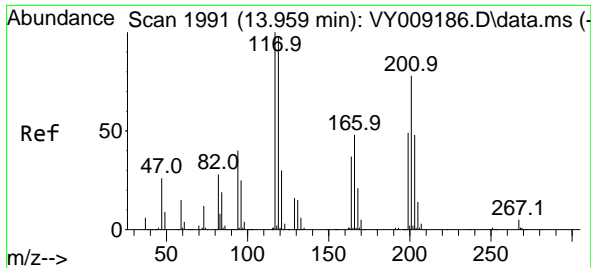
Tgt Ion:119 Resp: 8057
 Ion Ratio Lower Upper
 119 100
 91 81.1 34.8 104.4
 134 0.0 13.3 39.9#



#84
 1,2,4-Trimethylbenzene
 Concen: 7.235 ug/l
 RT: 13.117 min Scan# 1853
 Delta R.T. 0.000 min
 Lab File: VY009227.D
 Acq: 17 Jun 2022 15:18

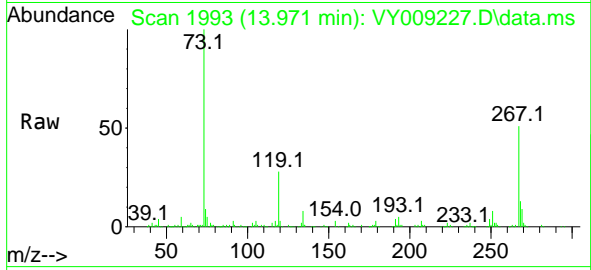
Tgt Ion:105 Resp: 57395
 Ion Ratio Lower Upper
 105 100
 120 47.0 22.3 66.9



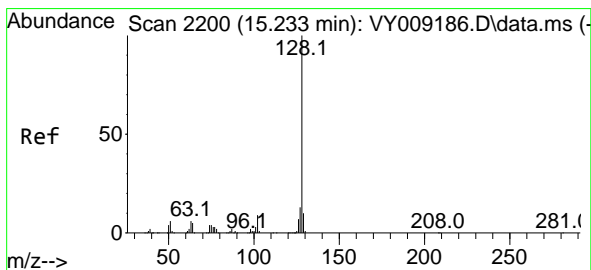
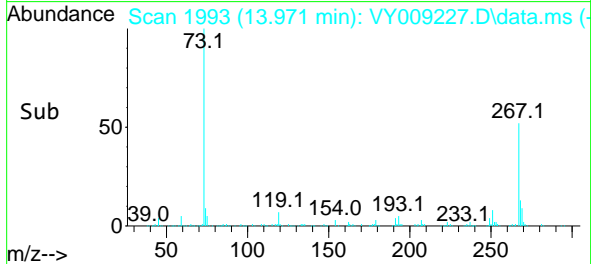
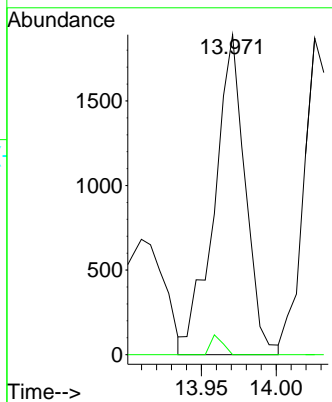


#90
 Hexachloroethane
 Concen: 1.654 ug/l
 RT: 13.971 min Scan# 1993
 Delta R.T. 0.012 min
 Lab File: VY009227.D
 Acq: 17 Jun 2022 15:18

Instrument : MSVOA_Y
 ClientSampleId :



Tgt Ion:117 Resp: 2723
 Ion Ratio Lower Upper
 117 100
 201 2.4 43.0 128.8#



#95
 Naphthalene
 Concen: 17.664 ug/l
 RT: 15.233 min Scan# 2200
 Delta R.T. 0.000 min
 Lab File: VY009227.D
 Acq: 17 Jun 2022 15:18

Tgt Ion:128 Resp: 95986
 Ion Ratio Lower Upper
 128 100
 127 13.3 11.0 16.4
 129 11.1 8.4 12.6

