

Data Path : Z:\VOASRV\HPCHEM1\MSVOA_Y\DATA\VY061920\
 Data File : VY002940.D
 Acq On : 19 Jun 2020 16:02
 Operator : SY/MD
 Sample : VY0619SBL01
 Misc : 5.00G/5ML/MSVOA_Y/SOIL
 ALS Vial : 10 Sample Multiplier: 1

Instrument :
 MSVOA_Y
 ClientSampleId :
 VY0619SBL01

Quant Time: Jun 20 03:56:20 2020
 Quant Method : Z:\VOASRV\HPCHEM1\MSVOA_Y\METHODS\82Y061920S.M
 Quant Title : SW846 8260
 QLast Update : Fri Jun 19 15:04:26 2020
 Response via : Initial Calibration

Internal Standards	R.T.	QIon	Response	Conc	Units	Dev(Min)
1) Pentafluorobenzene	7.80	168	404215	50.00	ug/l	0.00
34) 1,4-Difluorobenzene	8.69	114	598411	50.00	ug/l	0.00
63) Chlorobenzene-d5	11.49	117	546792	50.00	ug/l	0.00
72) 1,4-Dichlorobenzene-d4	13.42	152	288907	50.00	ug/l	0.00

System Monitoring Compounds

33) 1,2-Dichloroethane-d4	8.14	65	174103	52.15	ug/l	0.00
Spiked Amount	50.000		Recovery	=	104.30%	
35) Dibromofluoromethane	7.72	113	180145	53.20	ug/l	0.00
Spiked Amount	50.000		Recovery	=	106.40%	
50) Toluene-d8	10.18	98	700924	52.50	ug/l	0.00
Spiked Amount	50.000		Recovery	=	105.00%	
62) 4-Bromofluorobenzene	12.48	95	240553	51.94	ug/l	0.00
Spiked Amount	50.000		Recovery	=	103.88%	

Target Compounds

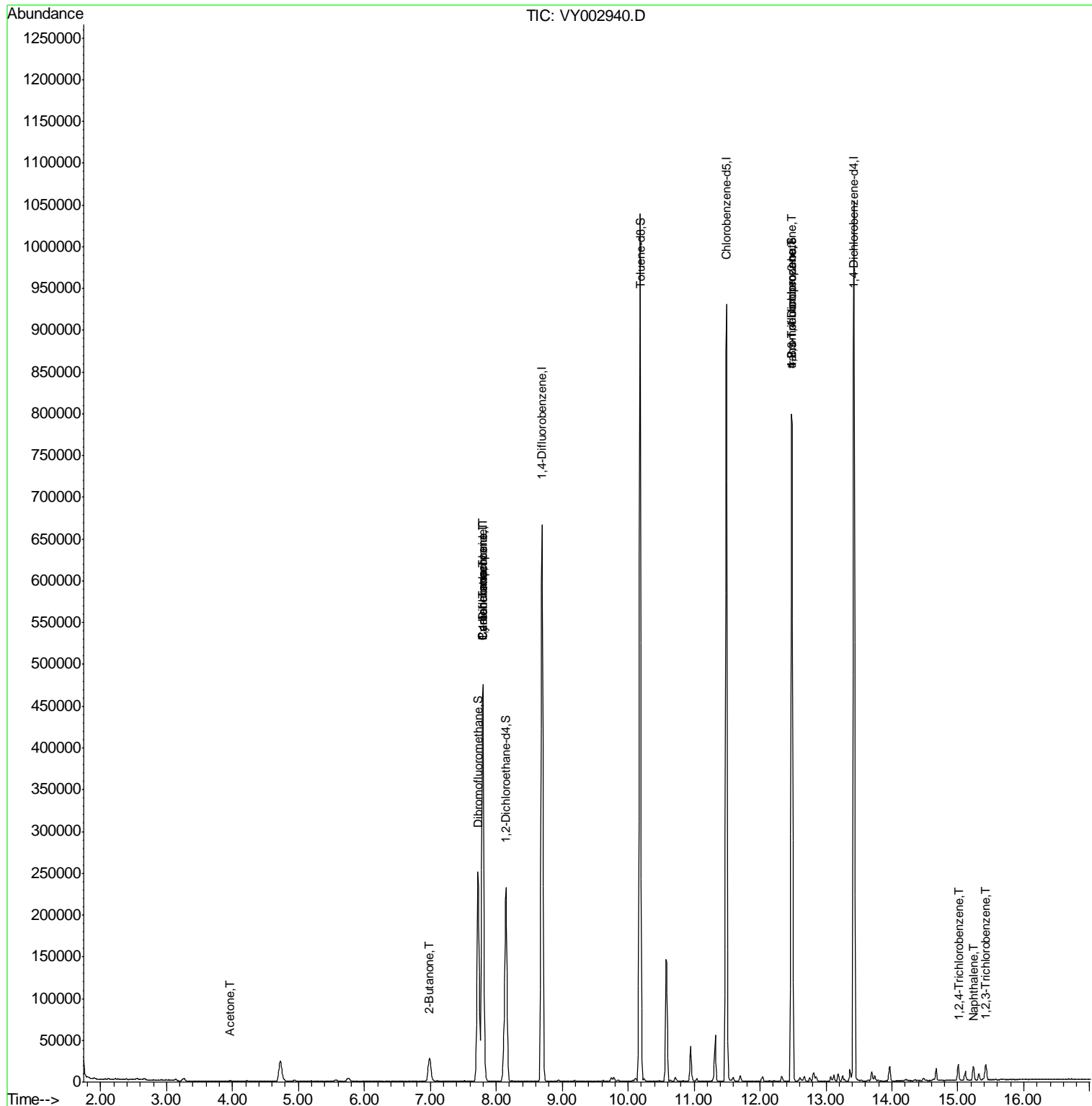
					Qvalue
11) Tert butyl alcohol	4.96	59	1841	Below Cal	# 74
16) Acetone	3.96	43	1787	2.161 ug/l	# 80
18) Methyl Acetate	4.50	43	261	Below Cal	# 49
20) Methylene Chloride	4.73	84	20541	Below Cal	97
25) 2-Butanone	6.99	43	1734	1.399 ug/l	# 44
31) Cyclohexane	7.80	56	6287	1.097 ug/l	# 1
36) 1,1-Dichloropropene	7.79	75	24622	5.066 ug/l	# 49
38) Carbon Tetrachloride	7.80	117	35397	6.609 ug/l	# 16
76) 1,2,3-Trichloropropane	12.48	75	114991	45.702 ug/l	# 100
81) trans-1,4-Dichloro-2-buten	12.48	75	114991	87.255 ug/l	# 16
93) 1,2,4-Trichlorobenzene	15.01	180	6342	1.063 ug/l	99
95) Naphthalene	15.23	128	14316	1.204 ug/l	98
96) 1,2,3-Trichlorobenzene	15.42	180	6787	1.275 ug/l	99

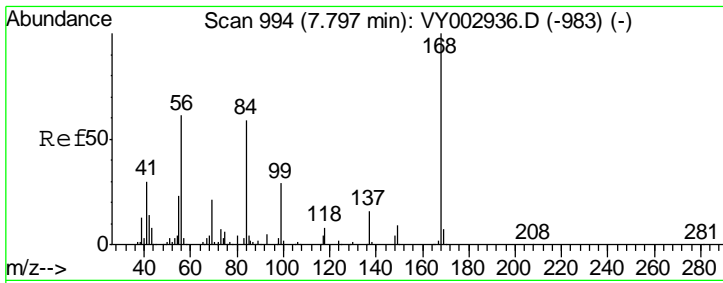
(#) = qualifier out of range (m) = manual integration (+) = signals summed

Data Path : Z:\VOASRV\HPCHEM1\MSVOA_Y\DATA\VY061920\
 Data File : VY002940.D
 Acq On : 19 Jun 2020 16:02
 Operator : SY/MD
 Sample : VY0619SBL01
 Misc : 5.00G/5ML/MSVOA_Y/SOIL
 ALS Vial : 10 Sample Multiplier: 1

Instrument :
 MSVOA_Y
 Client Sample Id :
 VY0619SBL01

Quant Time: Jun 20 03:56:20 2020
 Quant Method : Z:\VOASRV\HPCHEM1\MSVOA_Y\METHODS\82Y061920S.M
 Quant Title : SW846 8260
 QLast Update : Fri Jun 19 15:04:26 2020
 Response via : Initial Calibration

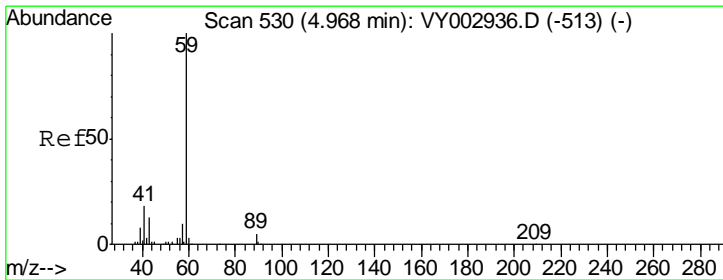
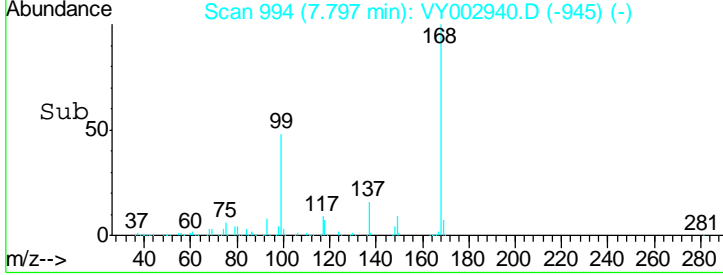
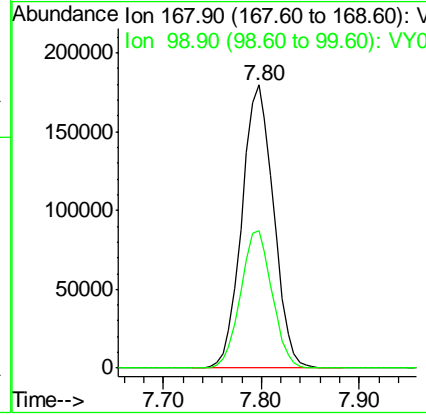
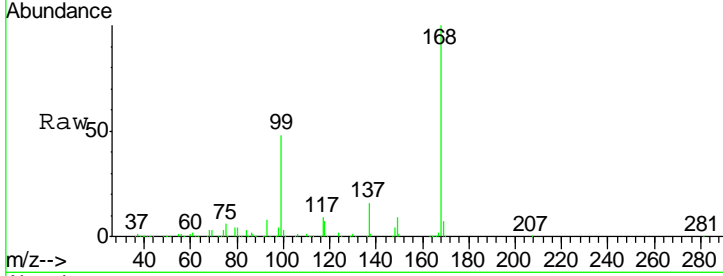




#1
 Pentafluorobenzene
 Concen: 50.000 ug/l
 RT: 7.80 min Scan# 994
 Delta R.T. 0.00 min
 Lab File: VY002940.D
 Acq: 19 Jun 2020 16:02

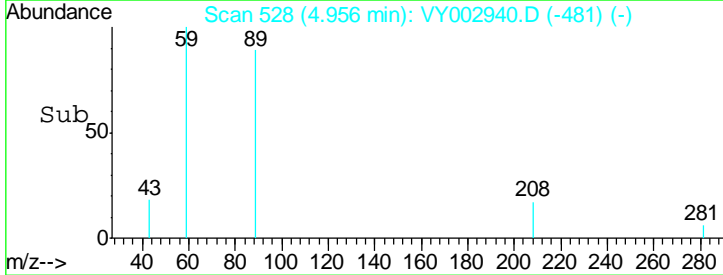
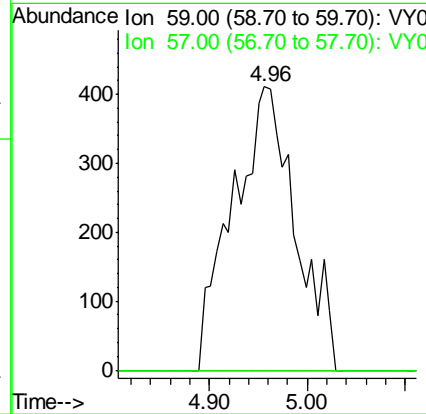
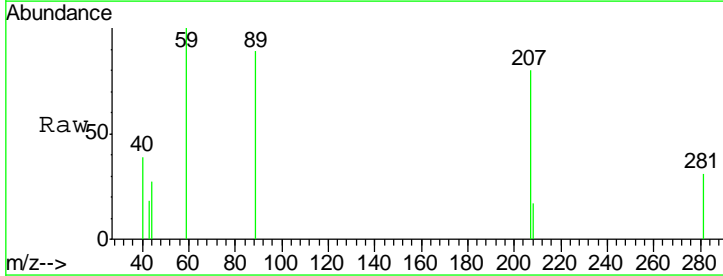
Instrument : MSVOA_Y
 ClientSampled : VY0619SBL01

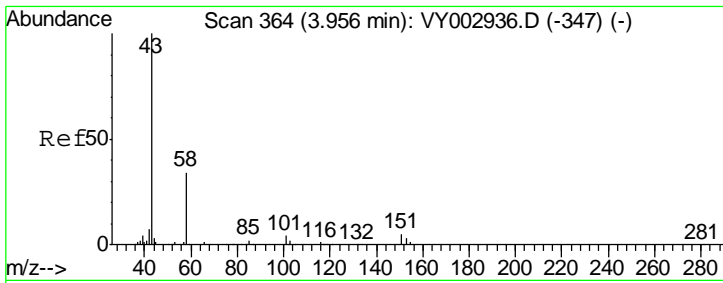
Tgt Ion	Resp	Lower	Upper
168	100		
99	48.4	39.5	59.3



#11
 Tert butyl alcohol
 Concen: Below Cal
 RT: 4.96 min Scan# 528
 Delta R.T. -0.01 min
 Lab File: VY002940.D
 Acq: 19 Jun 2020 16:02

Tgt Ion	Resp	Lower	Upper
59	100		
57	0.0	7.4	11.2#

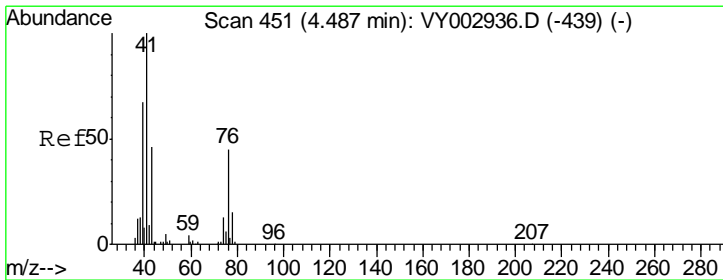
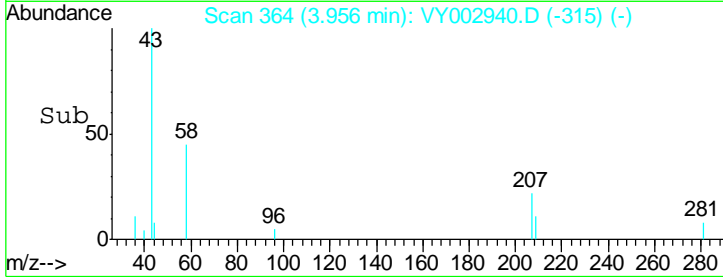
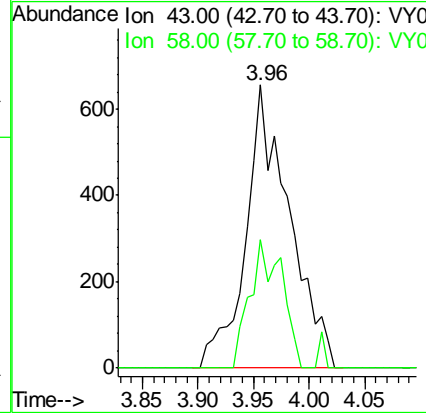
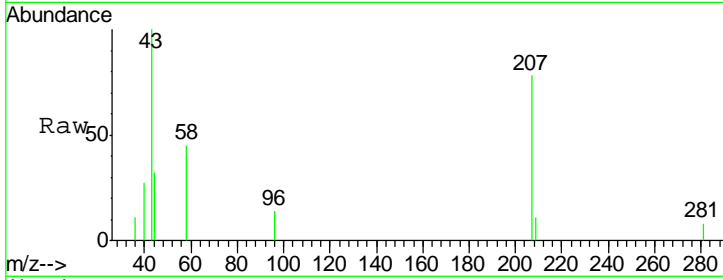




#16
 Acetone
 Concen: 2.161 ug/l
 RT: 3.96 min Scan# 364
 Delta R.T. 0.00 min
 Lab File: VY002940.D
 Acq: 19 Jun 2020 16:02

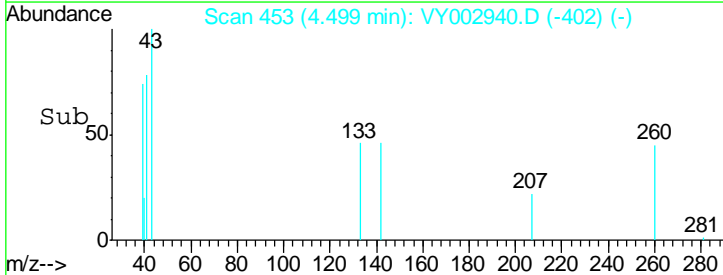
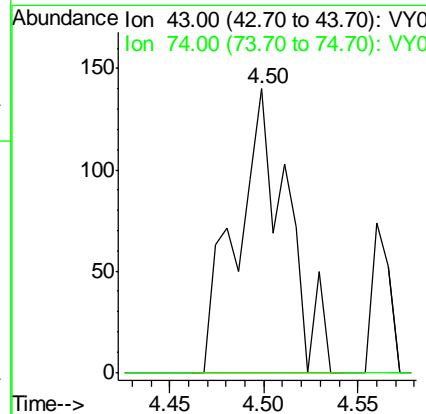
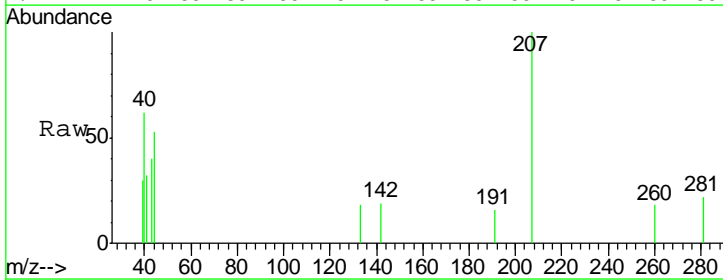
Instrument :
 MSVOA_Y
 ClientSampled :
 VY0619SBL01

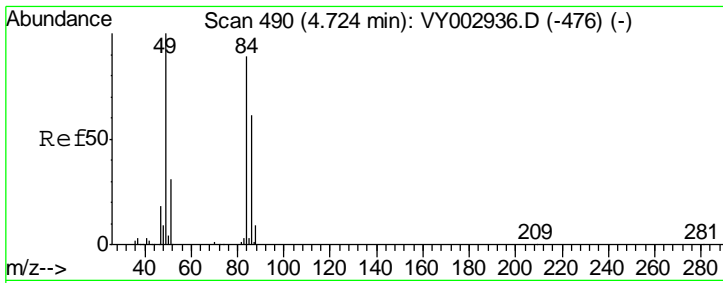
Tgt Ion: 43 Resp: 1787
 Ion Ratio Lower Upper
 43 100
 58 45.4 27.3 40.9#



#18
 Methyl Acetate
 Concen: Below Cal
 RT: 4.50 min Scan# 453
 Delta R.T. 0.01 min
 Lab File: VY002940.D
 Acq: 19 Jun 2020 16:02

Tgt Ion: 43 Resp: 261
 Ion Ratio Lower Upper
 43 100
 74 0.0 21.1 31.7#

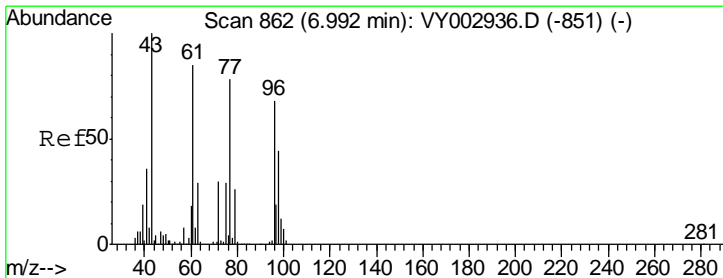
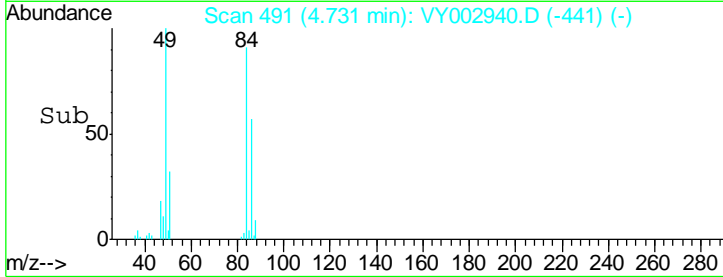
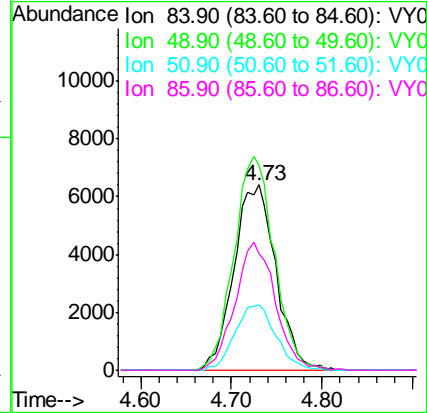
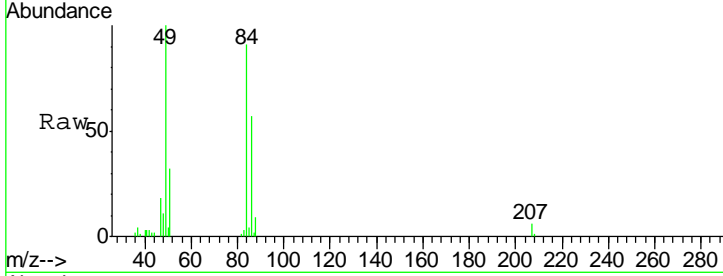




#20
 Methylene Chloride
 Concen: Below Cal
 RT: 4.73 min Scan# 491
 Delta R.T. 0.01 min
 Lab File: VY002940.D
 Acq: 19 Jun 2020 16:02

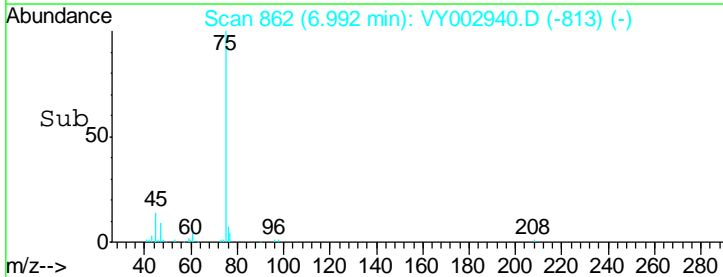
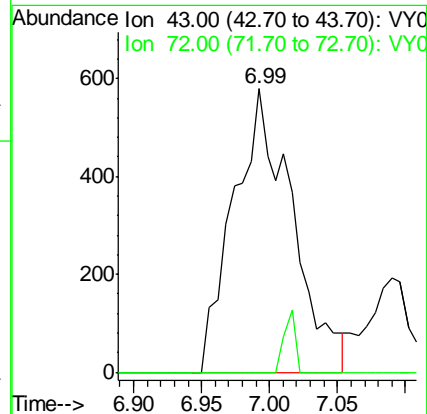
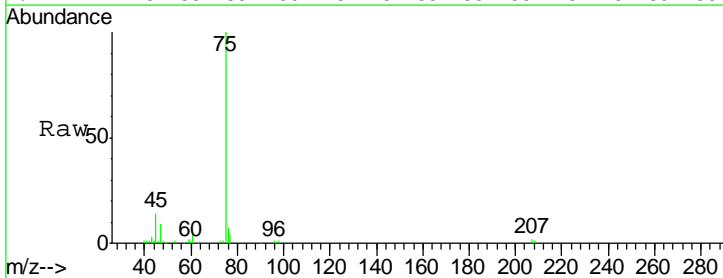
Instrument :
 MSVOA_Y
 ClientSampled :
 VY0619SBL01

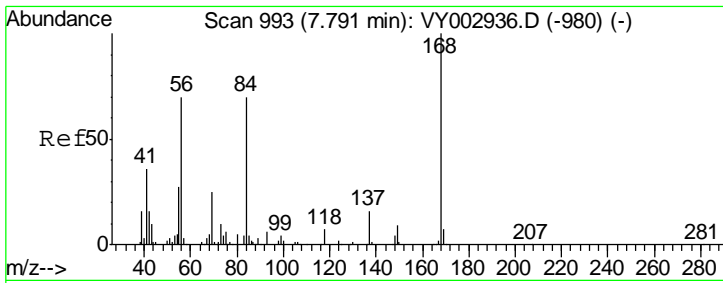
Tgt Ion	Resp	Lower	Upper
84	100		
49	110.3	90.0	135.0
51	35.1	27.9	41.9
86	62.7	54.6	81.8



#25
 2-Butanone
 Concen: 1.399 ug/l
 RT: 6.99 min Scan# 862
 Delta R.T. 0.00 min
 Lab File: VY002940.D
 Acq: 19 Jun 2020 16:02

Tgt Ion	Resp	Lower	Upper
43	100		
72	0.0	24.2	36.4#

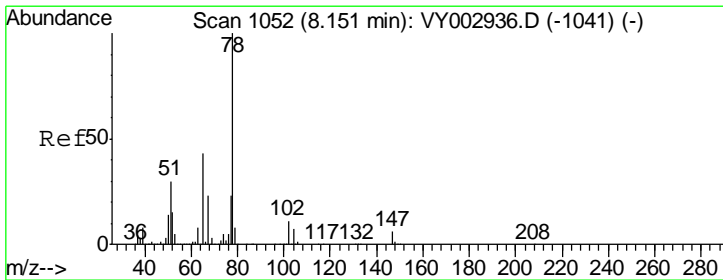
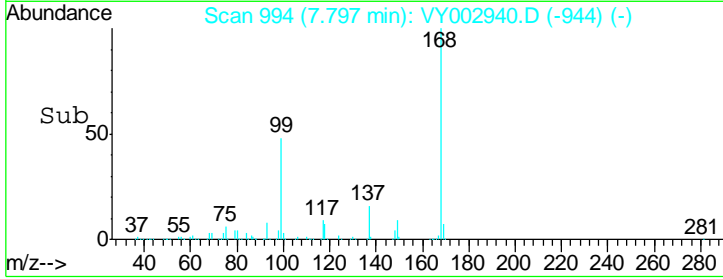
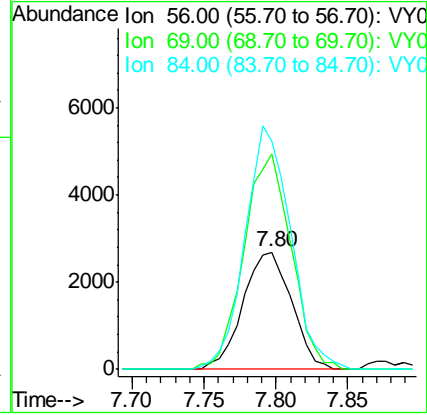
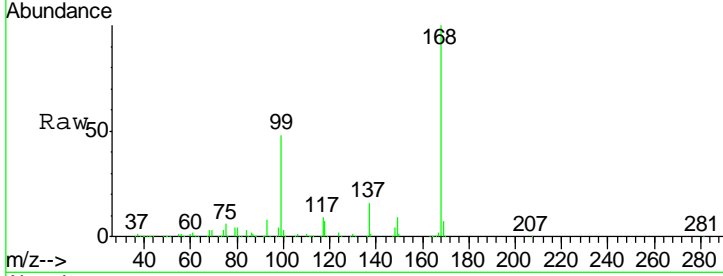




#31
 Cyclohexane
 Concen: 1.097 ug/l
 RT: 7.80 min Scan# 994
 Delta R.T. 0.01 min
 Lab File: VY002940.D
 Acq: 19 Jun 2020 16:02

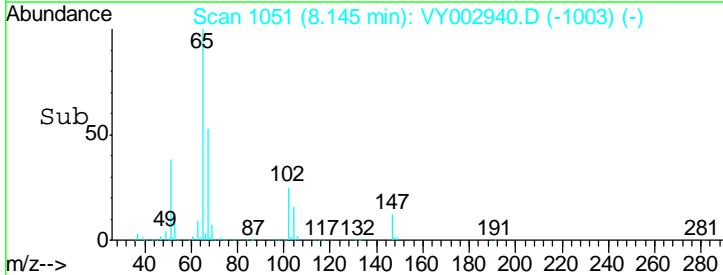
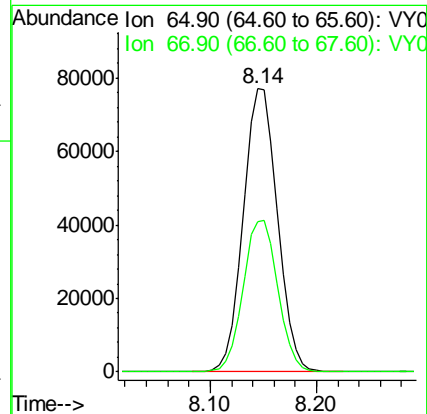
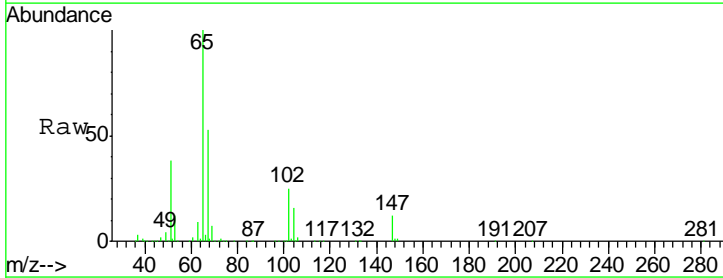
Instrument :
 MSVOA_Y
 ClientSampleId :
 VY0619SBL01

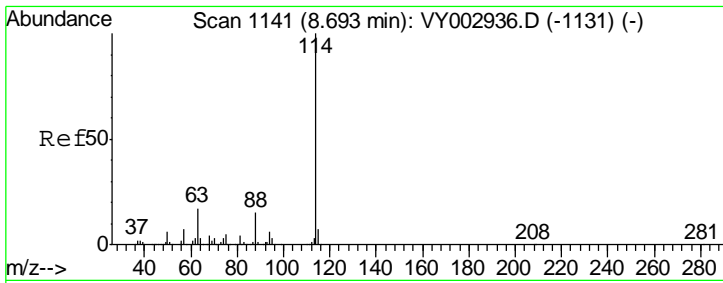
Tgt Ion	Resp	Lower	Upper
56	100		
69	183.7	28.9	43.3#
84	200.7	80.1	120.1#



#33
 1,2-Dichloroethane-d4
 Concen: 52.146 ug/l
 RT: 8.14 min Scan# 1051
 Delta R.T. -0.01 min
 Lab File: VY002940.D
 Acq: 19 Jun 2020 16:02

Tgt Ion	Resp	Lower	Upper
65	100		
67	54.4	0.0	109.4

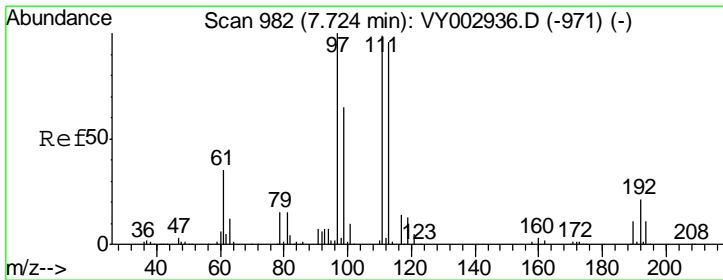
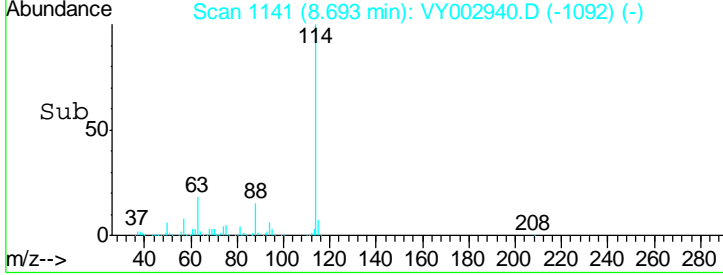
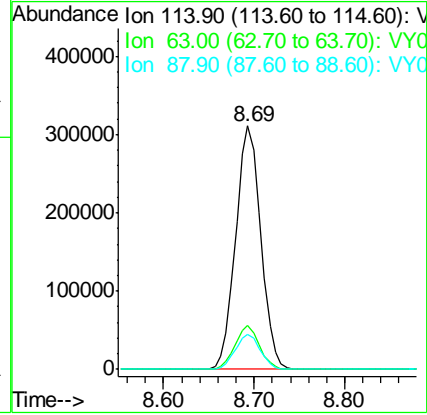
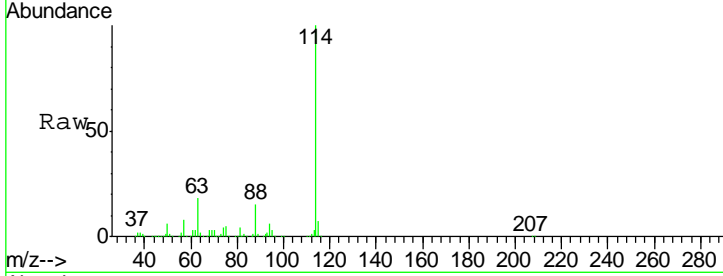




#34
 1,4-Difluorobenzene
 Concen: 50.000 ug/l
 RT: 8.69 min Scan# 1141
 Delta R.T. 0.00 min
 Lab File: VY002940.D
 Acq: 19 Jun 2020 16:02

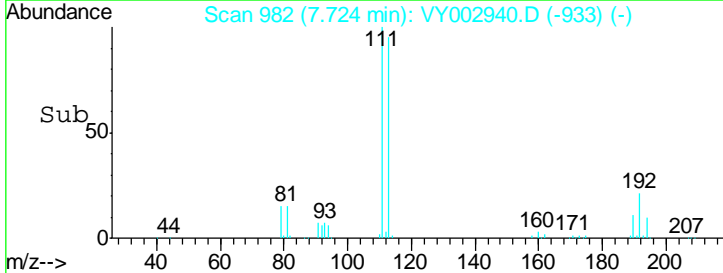
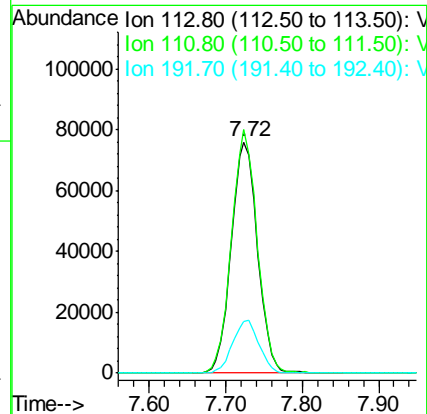
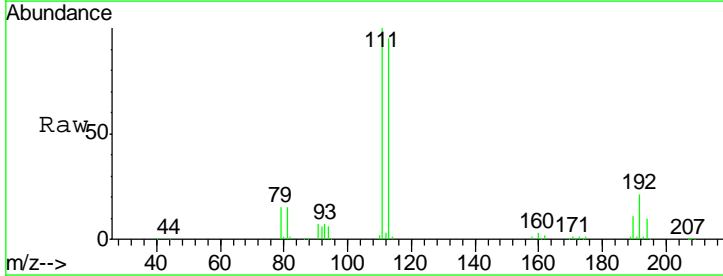
Instrument :
 MSVOA_Y
 ClientSampled :
 VY0619SBL01

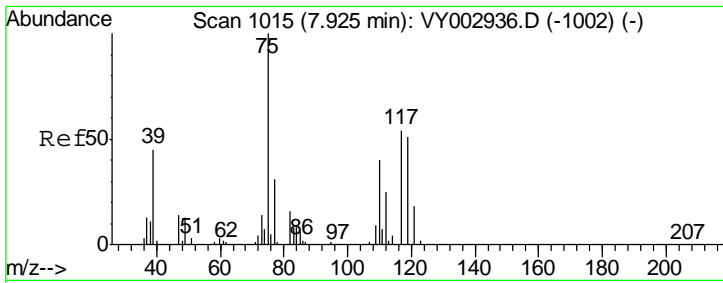
Tgt Ion	Resp	Lower	Upper
114	598411		
63	17.8	0.0	34.6
88	14.6	0.0	29.2



#35
 Dibromofluoromethane
 Concen: 53.204 ug/l
 RT: 7.72 min Scan# 982
 Delta R.T. 0.00 min
 Lab File: VY002940.D
 Acq: 19 Jun 2020 16:02

Tgt Ion	Resp	Lower	Upper
113	180145		
111	103.3	81.5	122.3
192	23.0	19.2	28.8

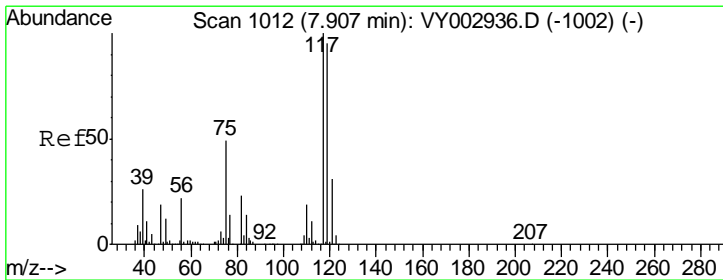
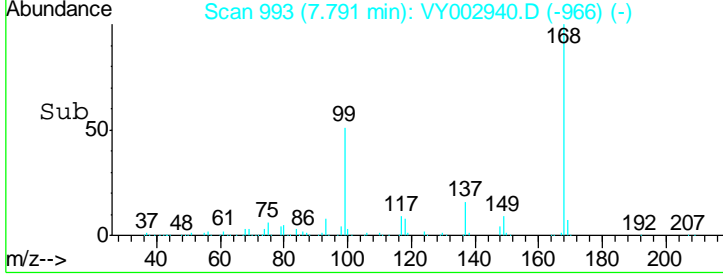
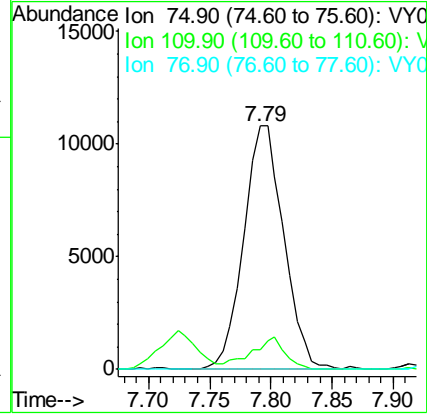
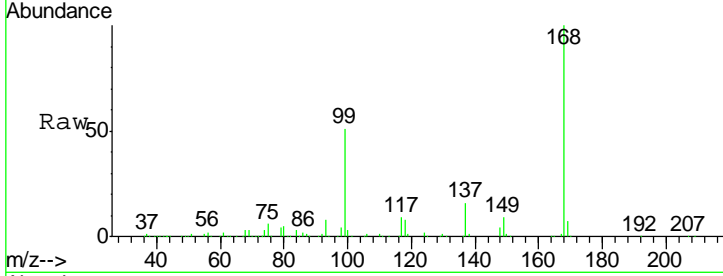




#36
 1,1-Dichloropropene
 Concen: 5.066 ug/l
 RT: 7.79 min Scan# 993
 Delta R.T. -0.13 min
 Lab File: VY002940.D
 Acq: 19 Jun 2020 16:02

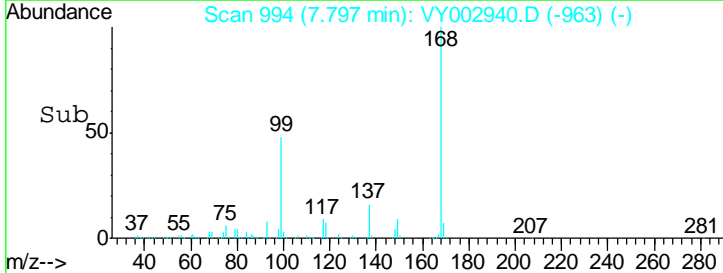
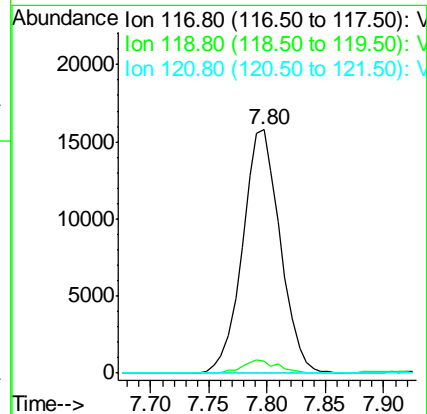
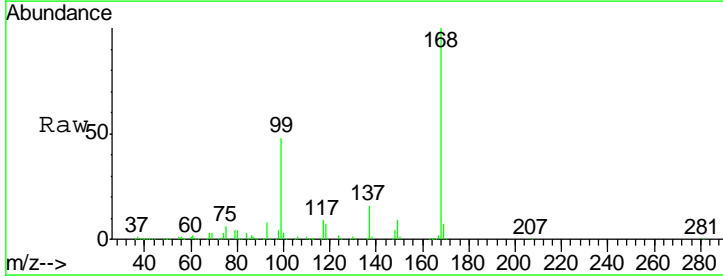
Instrument :
 MSVOA_Y
 ClientSampled :
 VY0619SBL01

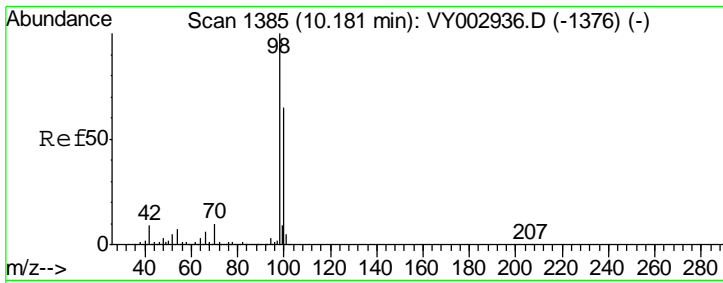
Tgt Ion	Resp	Lower	Upper
75	24622		
110	11.2	19.7	59.0#
77	0.0	25.0	37.4#



#38
 Carbon Tetrachloride
 Concen: 6.609 ug/l
 RT: 7.80 min Scan# 994
 Delta R.T. -0.11 min
 Lab File: VY002940.D
 Acq: 19 Jun 2020 16:02

Tgt Ion	Resp	Lower	Upper
117	35397		
119	5.0	76.1	114.1#
121	0.0	24.8	37.2#

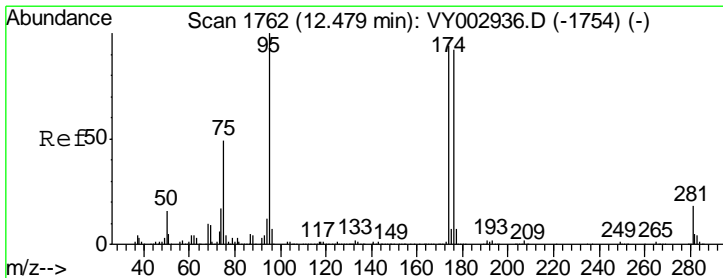
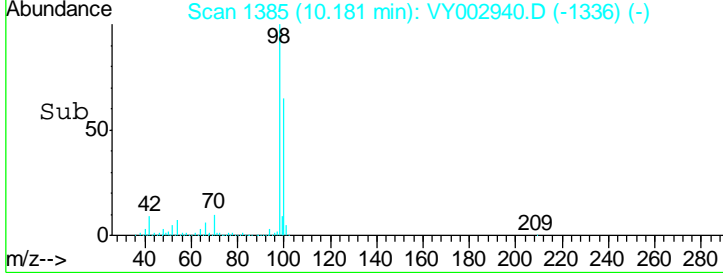
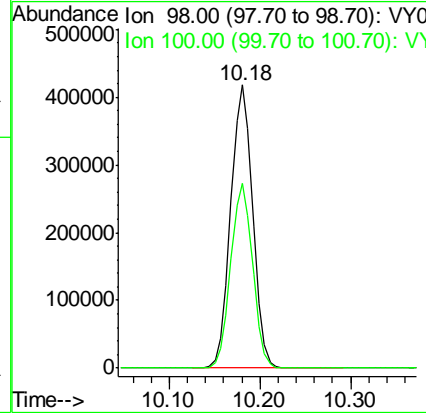
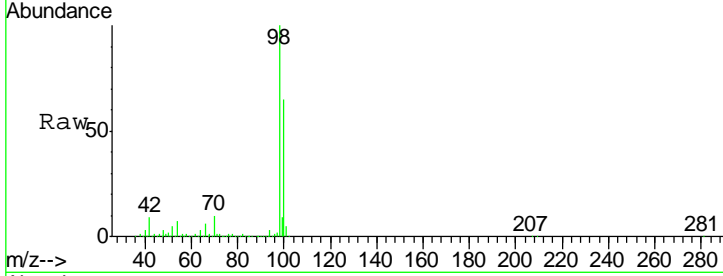




#50
 Toluene-d8
 Concen: 52.501 ug/l
 RT: 10.18 min Scan# 1385
 Delta R.T. 0.00 min
 Lab File: VY002940.D
 Acq: 19 Jun 2020 16:02

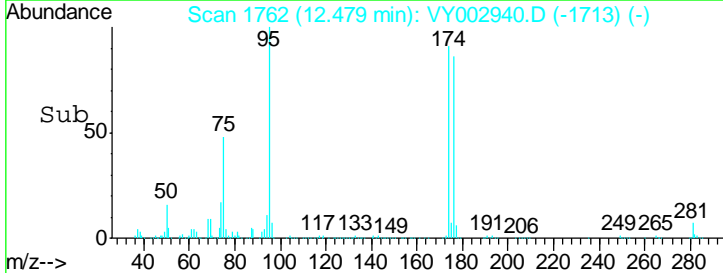
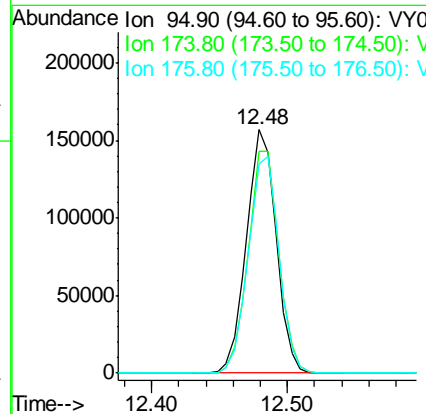
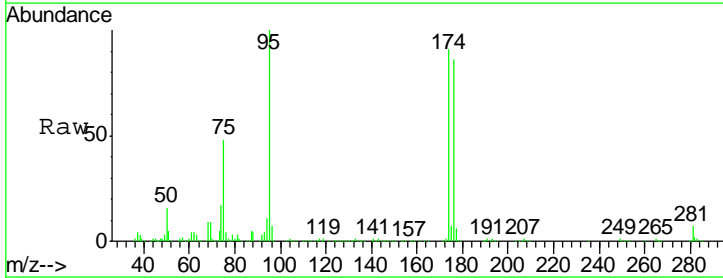
Instrument : MSVOA_Y
 ClientSampleId : VY0619SBL01

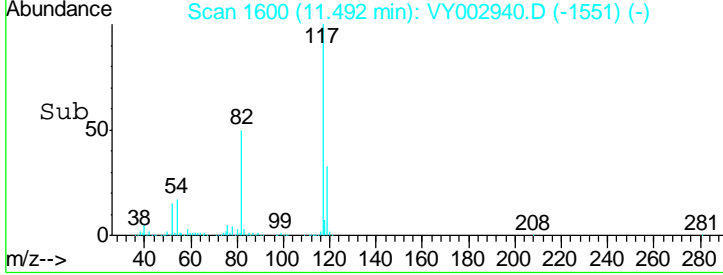
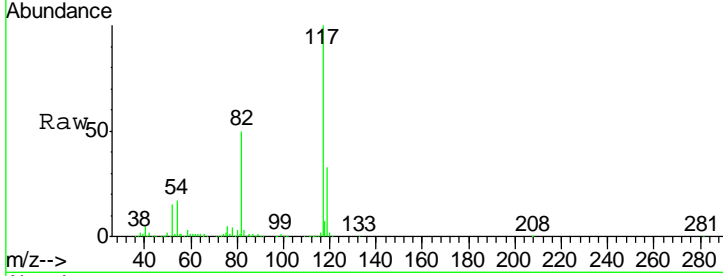
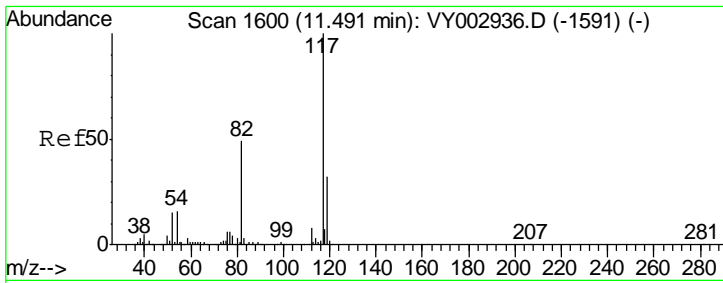
Tgt Ion	Resp	Ion Ratio	Lower	Upper
98	700924	100		
100		65.1	51.9	77.9



#62
 4-Bromofluorobenzene
 Concen: 51.944 ug/l
 RT: 12.48 min Scan# 1762
 Delta R.T. 0.00 min
 Lab File: VY002940.D
 Acq: 19 Jun 2020 16:02

Tgt Ion	Resp	Ion Ratio	Lower	Upper
95	240553	100		
174		94.1	0.0	191.2
176		91.6	0.0	186.0

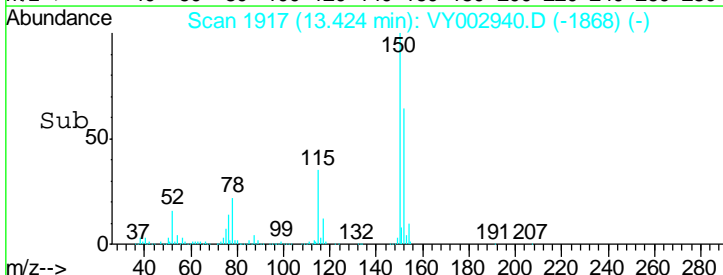
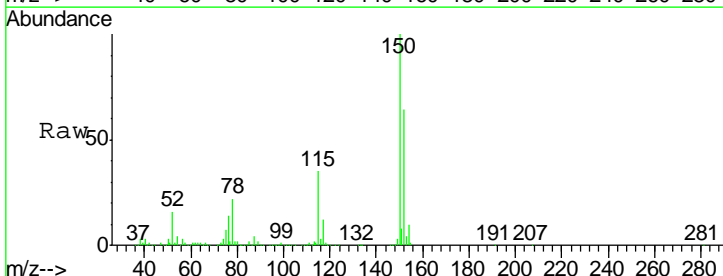
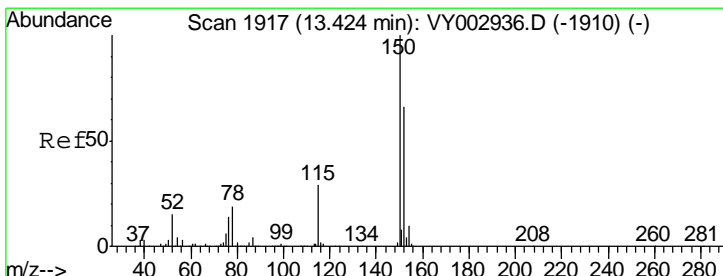
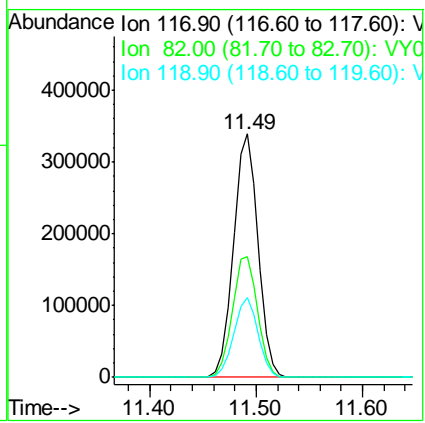




#63
 Chlorobenzene-d5
 Concen: 50.000 ug/l
 RT: 11.49 min Scan# 1600
 Delta R.T. 0.00 min
 Lab File: VY002940.D
 Acq: 19 Jun 2020 16:02

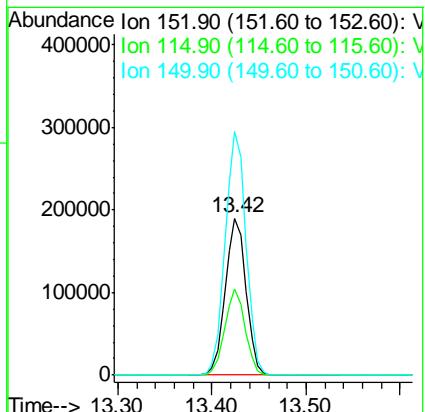
Instrument : MSVOA_Y
 ClientSampled : VY0619SBL01

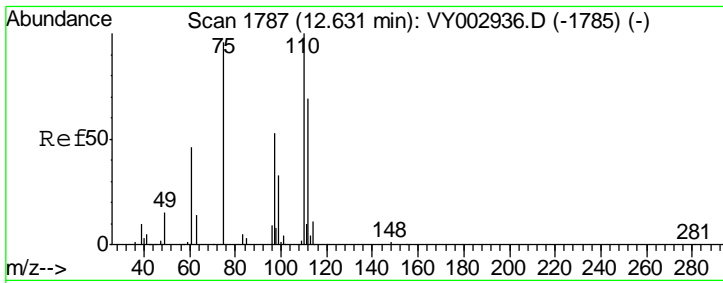
Tgt Ion	Resp	Lower	Upper
117	546792		
82	49.6	39.4	59.0
119	32.7	25.4	38.0



#72
 1,4-Dichlorobenzene-d4
 Concen: 50.000 ug/l
 RT: 13.42 min Scan# 1917
 Delta R.T. 0.00 min
 Lab File: VY002940.D
 Acq: 19 Jun 2020 16:02

Tgt Ion	Resp	Lower	Upper
152	288907		
115	53.8	26.9	80.6
150	156.1	0.0	341.8

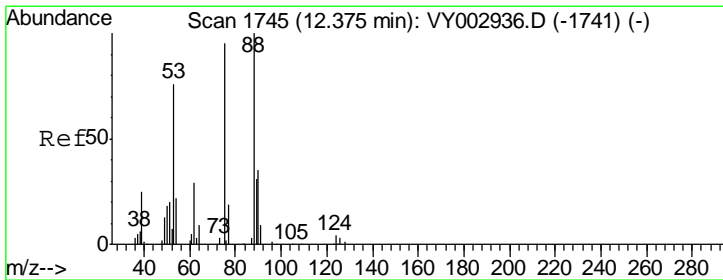
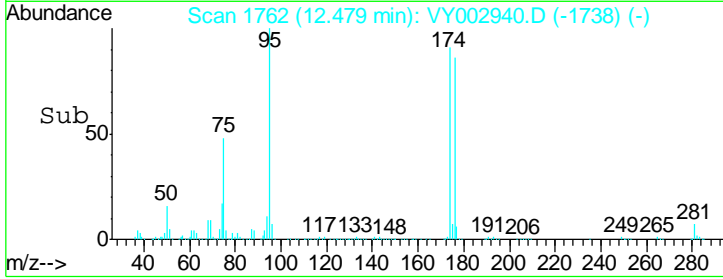
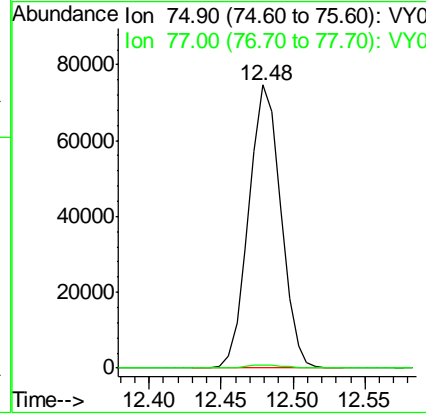
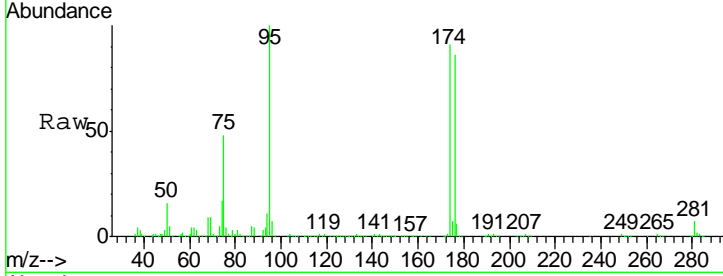




#76
 1,2,3-Trichloropropane
 Concen: 45.702 ug/l
 RT: 12.48 min Scan# 1762
 Delta R.T. -0.15 min
 Lab File: VY002940.D
 Acq: 19 Jun 2020 16:02

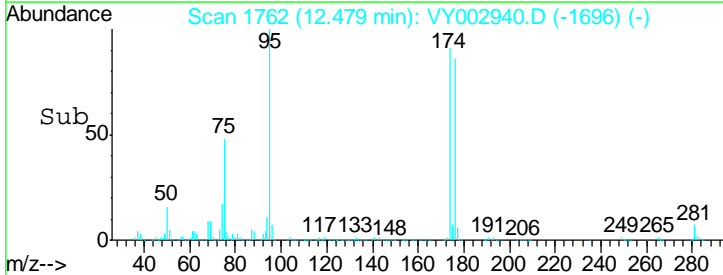
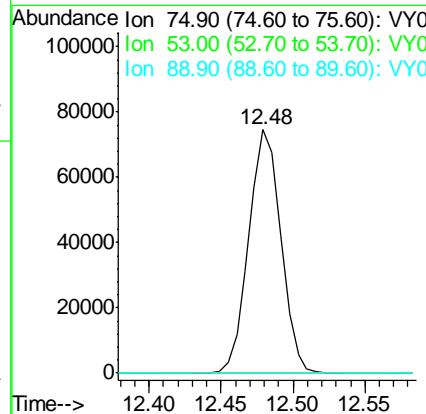
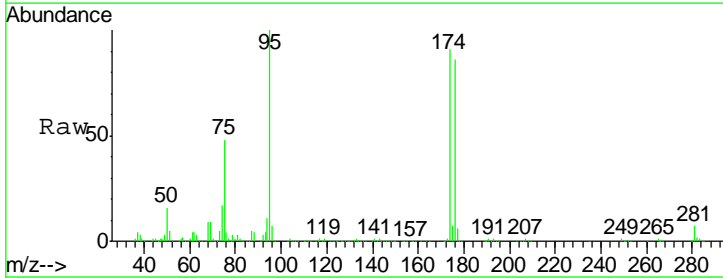
Instrument :
 MSVOA_Y
 ClientSampled :
 VY0619SBL01

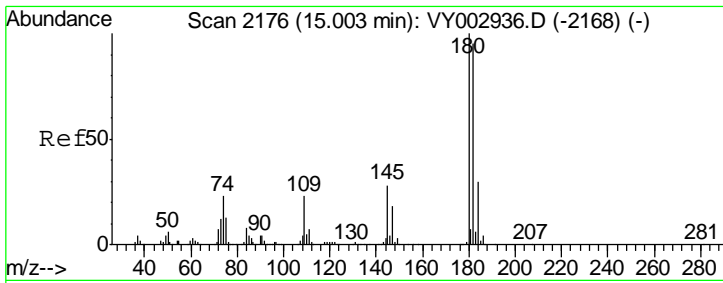
Tgt Ion: 75 Resp: 114991
 Ion Ratio Lower Upper
 75 100
 77 1.3 0.0 0.0#



#81
 trans-1,4-Dichloro-2-butene
 Concen: 87.255 ug/l
 RT: 12.48 min Scan# 1762
 Delta R.T. 0.10 min
 Lab File: VY002940.D
 Acq: 19 Jun 2020 16:02

Tgt Ion: 75 Resp: 114991
 Ion Ratio Lower Upper
 75 100
 53 0.0 65.1 97.7#
 89 0.1 38.4 57.6#

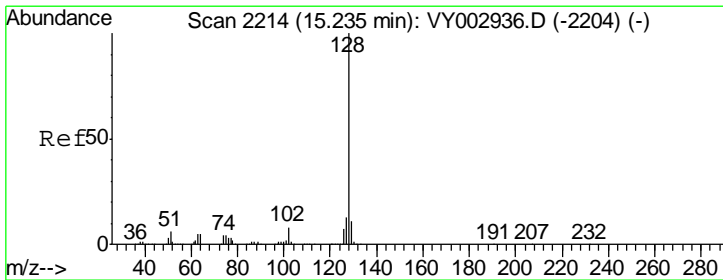
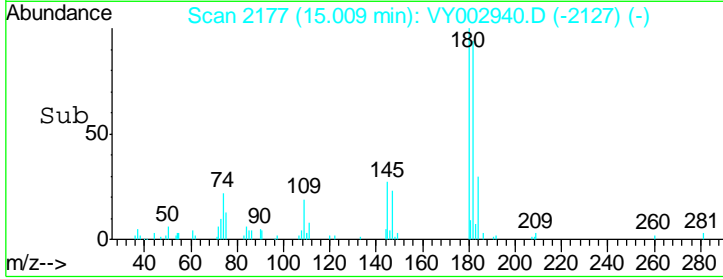
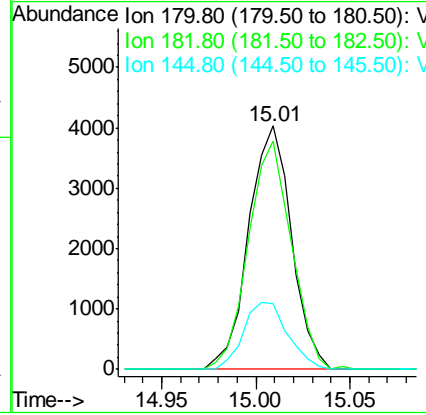
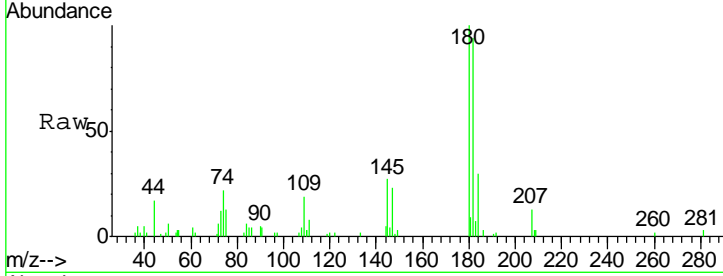




#93
 1,2,4-Trichlorobenzene
 Concen: 1.063 ug/l
 RT: 15.01 min Scan# 2177
 Delta R.T. 0.01 min
 Lab File: VY002940.D
 Acq: 19 Jun 2020 16:02

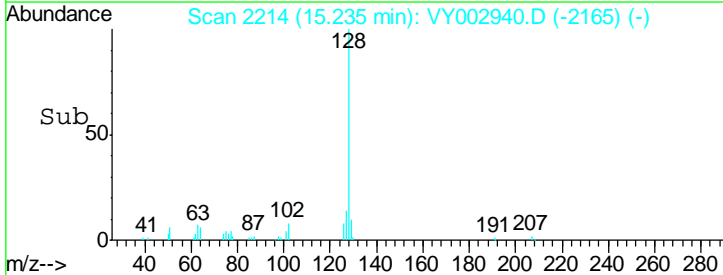
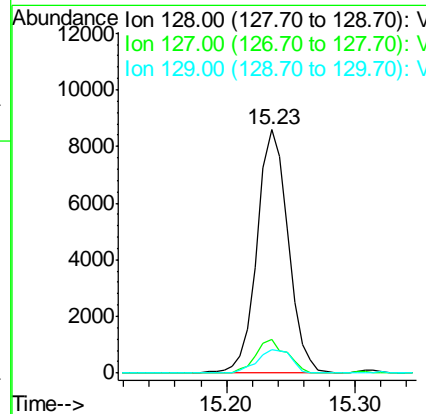
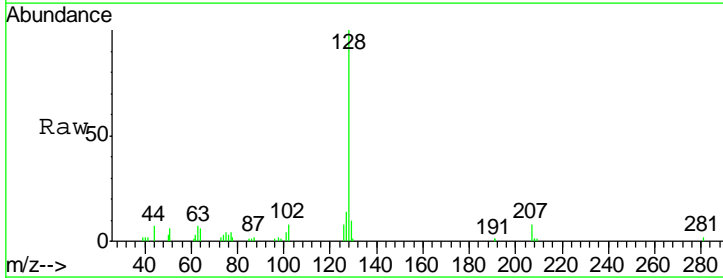
Instrument :
 MSVOA_Y
 ClientSampled :
 VY0619SBL01

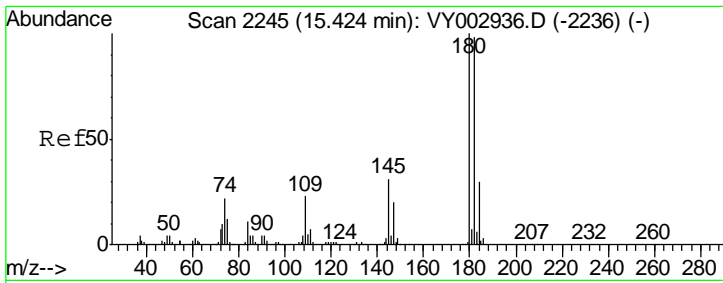
Tgt Ion	Resp	Lower	Upper
180	100		
182	94.3	47.9	143.6
145	28.6	14.1	42.3



#95
 Naphthalene
 Concen: 1.204 ug/l
 RT: 15.23 min Scan# 2214
 Delta R.T. 0.00 min
 Lab File: VY002940.D
 Acq: 19 Jun 2020 16:02

Tgt Ion	Resp	Lower	Upper
128	100		
127	13.7	10.2	15.4
129	10.6	8.7	13.1





#96
 1,2,3-Trichlorobenzene
 Concen: 1.275 ug/l
 RT: 15.42 min Scan# 2245
 Delta R.T. 0.00 min
 Lab File: VY002940.D
 Acq: 19 Jun 2020 16:02

Instrument : MSVOA_Y
 ClientSampleId : VY0619SBL01

Tgt Ion	Resp	Lower	Upper
180	100		
182	94.0	47.8	143.3
145	30.0	15.0	45.0

