

Data Path : Z:\VOASRV\HPCHEM1\MSVOA\_Y\DATA\VY061920\  
 Data File : VY002960.D  
 Acq On : 20 Jun 2020 00:10  
 Operator : SY/MD  
 Sample : L3020-08  
 Misc : 6.97G/5ML/MSVOA\_Y/SOIL  
 ALS Vial : 30 Sample Multiplier: 1

Instrument :  
 MSVOA\_Y  
 ClientSampleId :  
 MW-26(18-20)

Quant Time: Jun 20 04:00:46 2020  
 Quant Method : Z:\VOASRV\HPCHEM1\MSVOA\_Y\METHODS\82Y061920S.M  
 Quant Title : SW846 8260  
 QLast Update : Fri Jun 19 15:04:26 2020  
 Response via : Initial Calibration

Internal Standards	R.T.	QIon	Response	Conc	Units	Dev(Min)
1) Pentafluorobenzene	7.80	168	249605	50.00	ug/l	0.00
34) 1,4-Difluorobenzene	8.69	114	409067	50.00	ug/l	0.00
63) Chlorobenzene-d5	11.49	117	391905	50.00	ug/l	0.00
72) 1,4-Dichlorobenzene-d4	13.42	152	199989	50.00	ug/l	0.00

## System Monitoring Compounds

33) 1,2-Dichloroethane-d4	8.15	65	123114	59.71	ug/l	0.00
Spiked Amount				50.000		
			Recovery	=	119.42%	
35) Dibromofluoromethane	7.73	113	125318	54.14	ug/l	0.00
Spiked Amount				50.000		
			Recovery	=	108.28%	
50) Toluene-d8	10.18	98	485072	53.15	ug/l	0.00
Spiked Amount				50.000		
			Recovery	=	106.30%	
62) 4-Bromofluorobenzene	12.48	95	166110	52.47	ug/l	0.00
Spiked Amount				50.000		
			Recovery	=	104.94%	

## Target Compounds

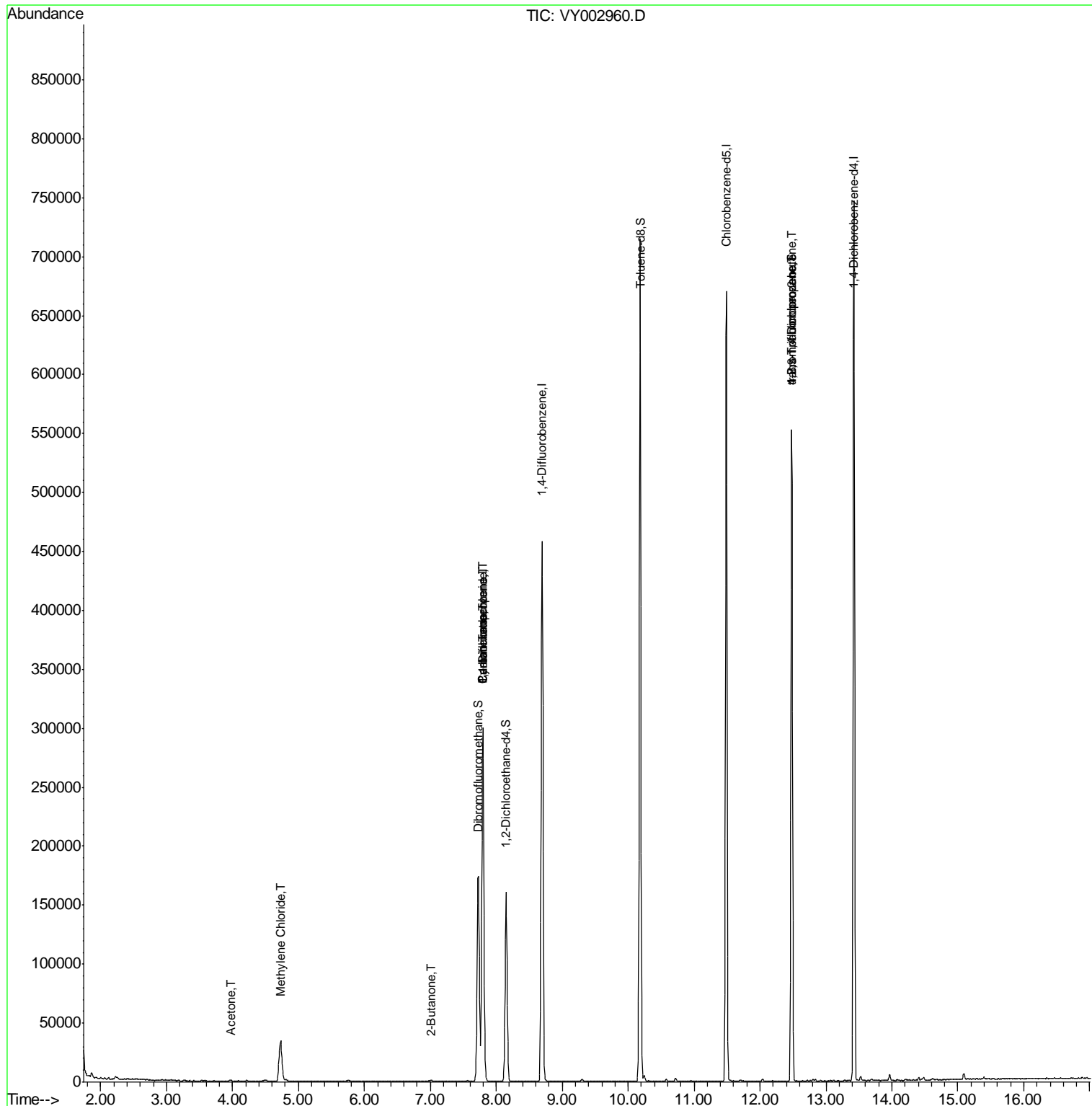
					Qvalue
16) Acetone	3.96	43	1243	2.434 ug/l	90
18) Methyl Acetate	4.50	43	1870	Below Cal	99
20) Methylene Chloride	4.73	84	29078	5.903 ug/l	95
25) 2-Butanone	7.02	43	1063	1.389 ug/l	91
31) Cyclohexane	7.79	56	3699	1.045 ug/l #	1
36) 1,1-Dichloropropene	7.80	75	14757	4.442 ug/l #	49
38) Carbon Tetrachloride	7.80	117	22642	6.184 ug/l #	17
76) 1,2,3-Trichloropropane	12.48	75	78390	45.008 ug/l #	100
81) trans-1,4-Dichloro-2-buten	12.48	75	78390	85.929 ug/l #	16

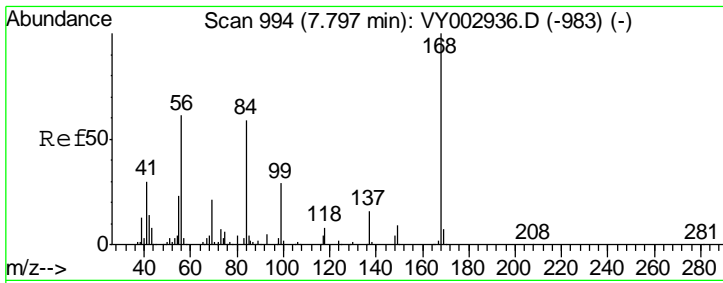
(#) = qualifier out of range (m) = manual integration (+) = signals summed

Data Path : Z:\VOASRV\HPCHEM1\MSVOA\_Y\DATA\VY061920\  
 Data File : VY002960.D  
 Acq On : 20 Jun 2020 00:10  
 Operator : SY/MD  
 Sample : L3020-08  
 Misc : 6.97G/5ML/MSVOA\_Y/SOIL  
 ALS Vial : 30 Sample Multiplier: 1

Instrument :  
 MSVOA\_Y  
 Client Sampled :  
 MW-26(18-20)

Quant Time: Jun 20 04:00:46 2020  
 Quant Method : Z:\VOASRV\HPCHEM1\MSVOA\_Y\METHODS\82Y061920S.M  
 Quant Title : SW846 8260  
 QLast Update : Fri Jun 19 15:04:26 2020  
 Response via : Initial Calibration

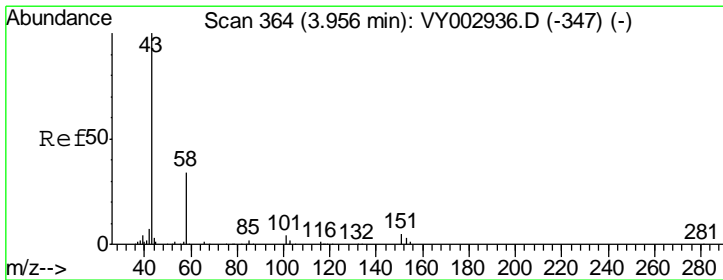
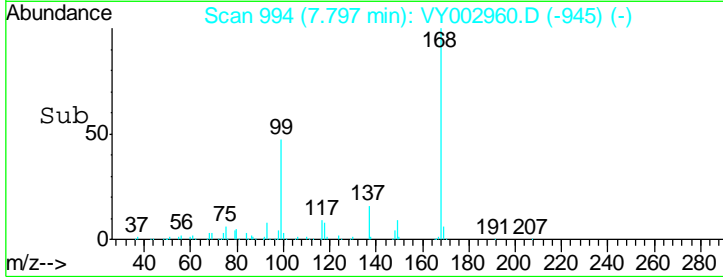
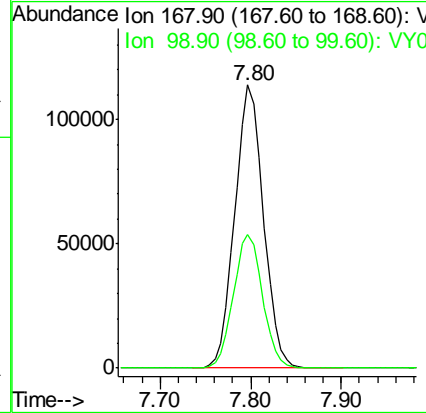
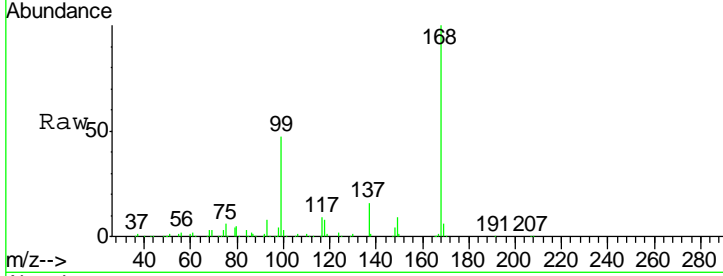




#1  
 Pentafluorobenzene  
 Concen: 50.000 ug/l  
 RT: 7.80 min Scan# 994  
 Delta R.T. 0.00 min  
 Lab File: VY002960.D  
 Acq: 20 Jun 2020 00:10

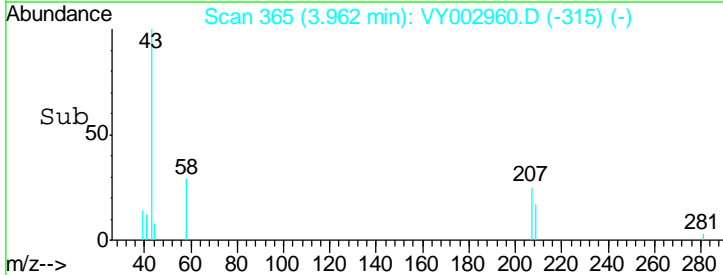
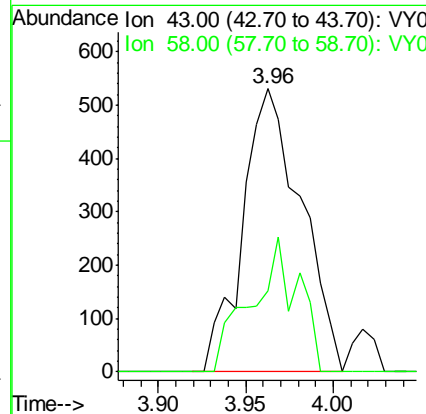
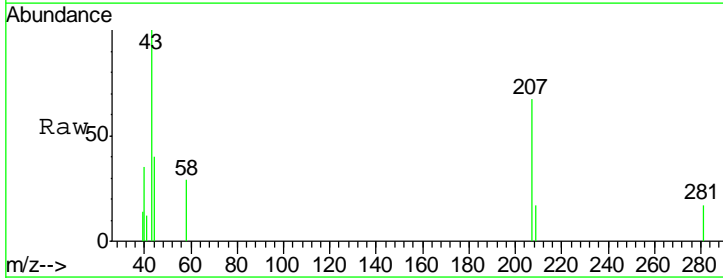
Instrument :  
 MSVOA\_Y  
 ClientSampled :  
 MW-26(18-20)

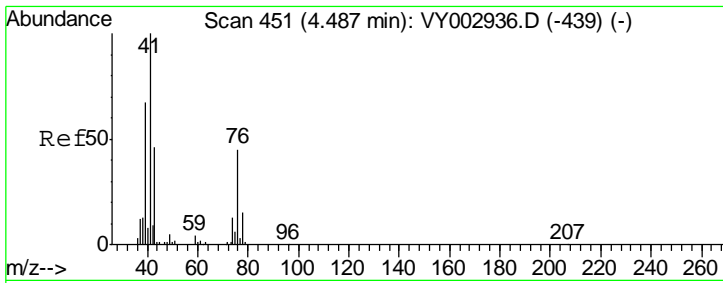
Tgt Ion: 168 Resp: 249605  
 Ion Ratio Lower Upper  
 168 100  
 99 47.1 39.5 59.3



#16  
 Acetone  
 Concen: 2.434 ug/l  
 RT: 3.96 min Scan# 365  
 Delta R.T. 0.01 min  
 Lab File: VY002960.D  
 Acq: 20 Jun 2020 00:10

Tgt Ion: 43 Resp: 1243  
 Ion Ratio Lower Upper  
 43 100  
 58 28.6 27.3 40.9

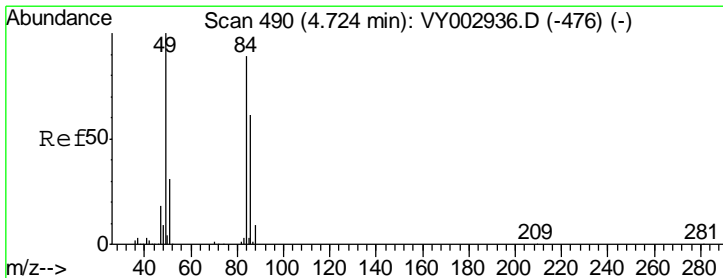
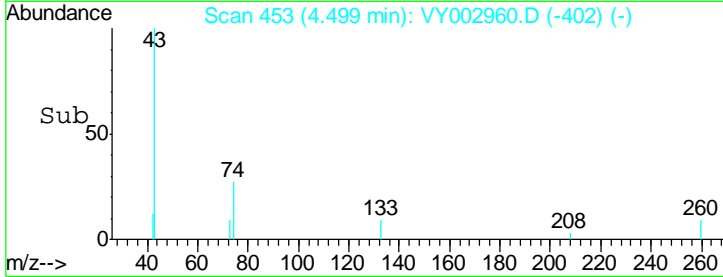
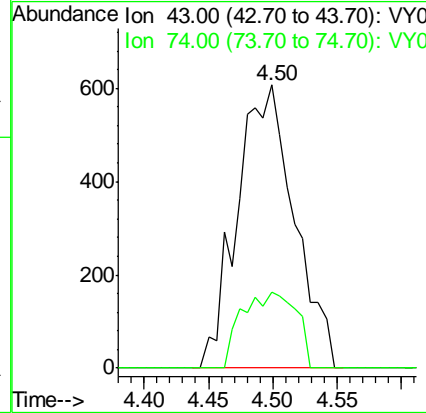
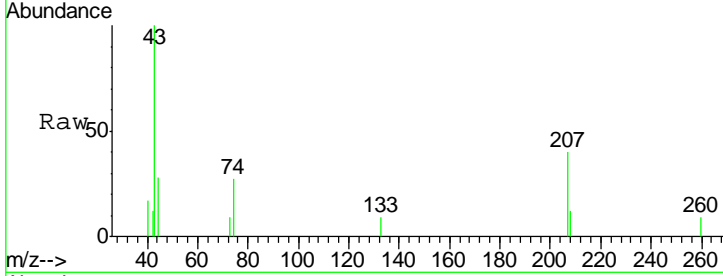




#18  
 Methyl Acetate  
 Concen: Below Cal  
 RT: 4.50 min Scan# 453  
 Delta R.T. 0.01 min  
 Lab File: VY002960.D  
 Acq: 20 Jun 2020 00:10

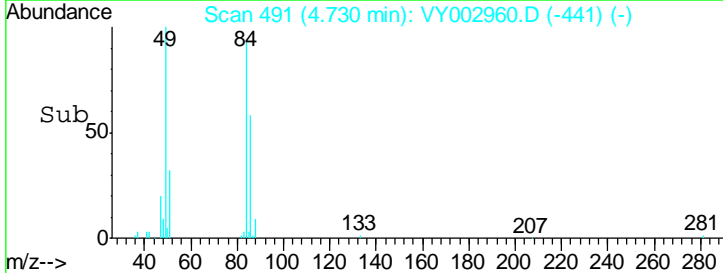
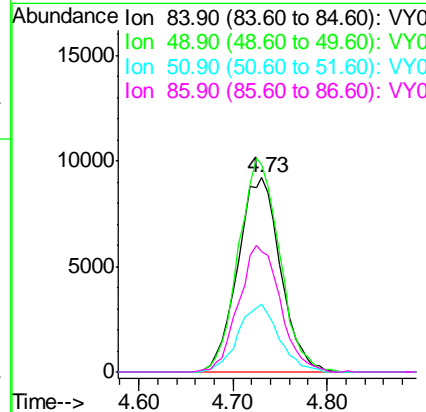
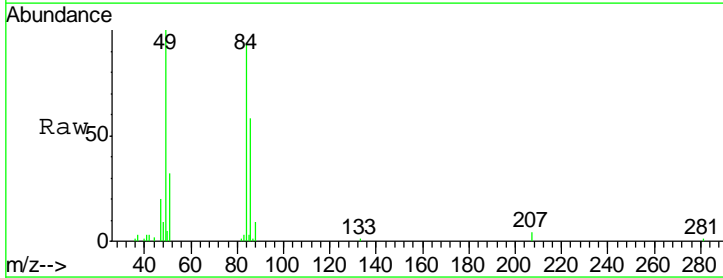
Instrument :  
 MSVOA\_Y  
 ClientSampled :  
 MW-26(18-20)

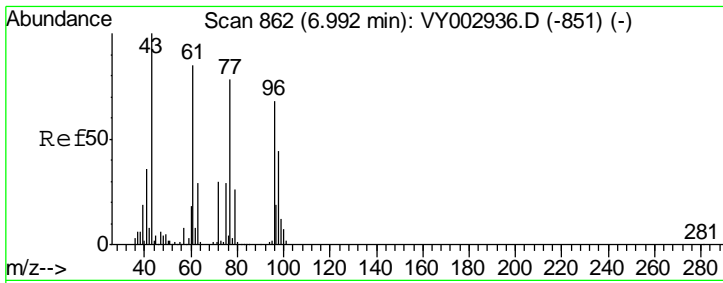
Tgt Ion: 43 Resp: 1870  
 Ion Ratio Lower Upper  
 43 100  
 74 25.7 21.1 31.7



#20  
 Methylene Chloride  
 Concen: 5.903 ug/l  
 RT: 4.73 min Scan# 491  
 Delta R.T. 0.01 min  
 Lab File: VY002960.D  
 Acq: 20 Jun 2020 00:10

Tgt Ion: 84 Resp: 29078  
 Ion Ratio Lower Upper  
 84 100  
 49 106.7 90.0 135.0  
 51 34.6 27.9 41.9  
 86 62.0 54.6 81.8

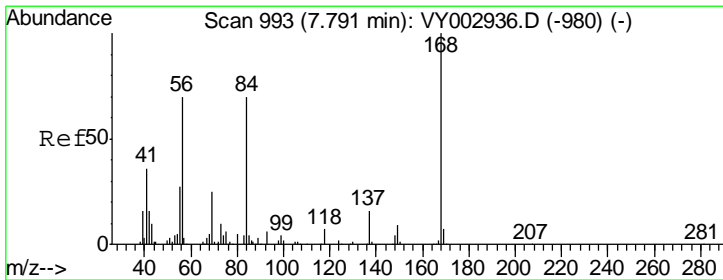
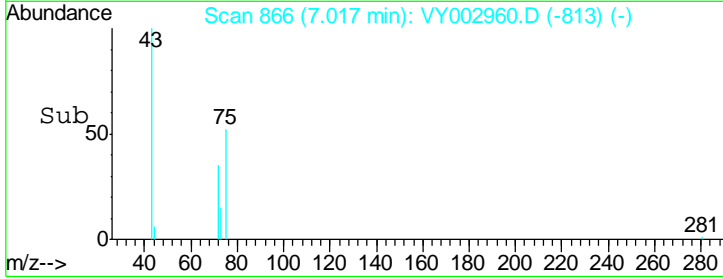
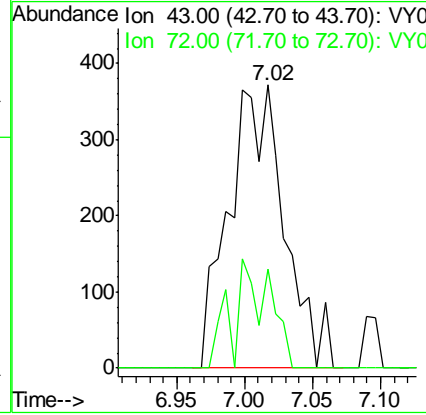
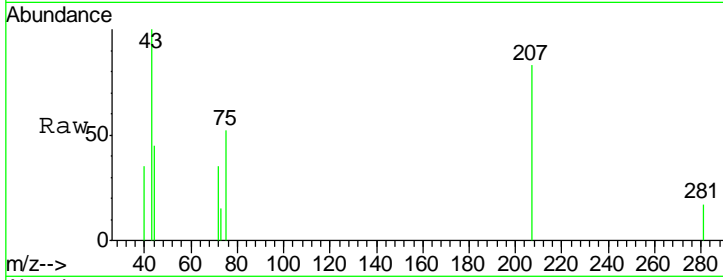




#25  
 2-Butanone  
 Concen: 1.389 ug/l  
 RT: 7.02 min Scan# 866  
 Delta R.T. 0.02 min  
 Lab File: VY002960.D  
 Acq: 20 Jun 2020 00:10

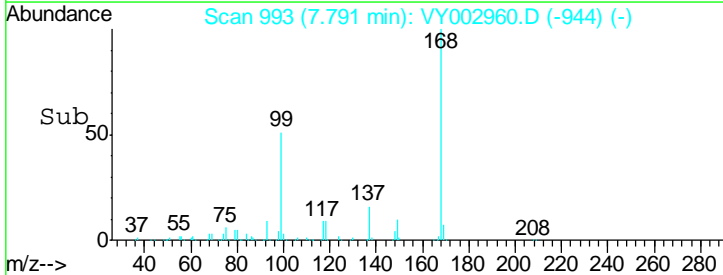
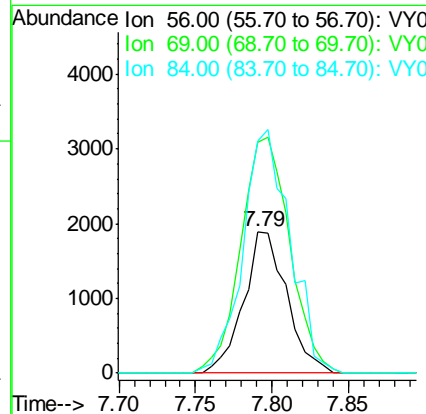
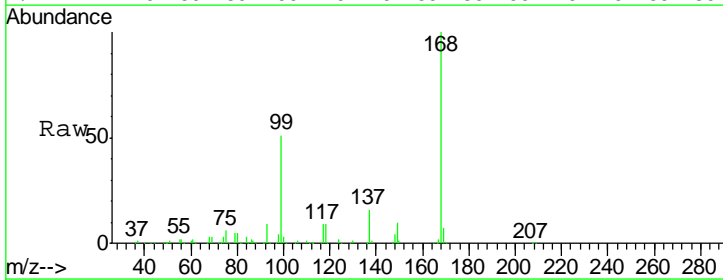
Instrument :  
 MSVOA\_Y  
 ClientSampled :  
 MW-26(18-20)

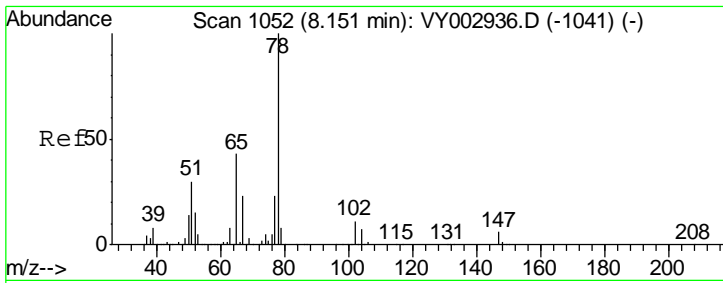
Tgt Ion: 43 Resp: 1063  
 Ion Ratio Lower Upper  
 43 100  
 72 34.9 24.2 36.4



#31  
 Cyclohexane  
 Concen: 1.045 ug/l  
 RT: 7.79 min Scan# 993  
 Delta R.T. 0.00 min  
 Lab File: VY002960.D  
 Acq: 20 Jun 2020 00:10

Tgt Ion: 56 Resp: 3699  
 Ion Ratio Lower Upper  
 56 100  
 69 163.8 28.9 43.3#  
 84 169.2 80.1 120.1#

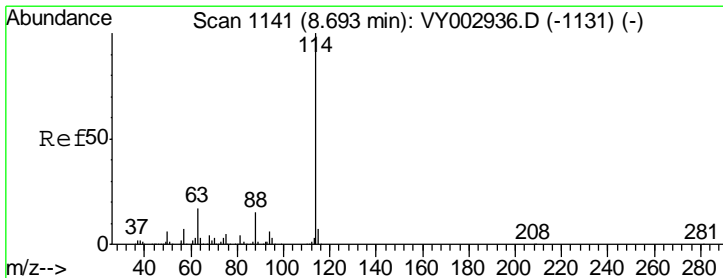
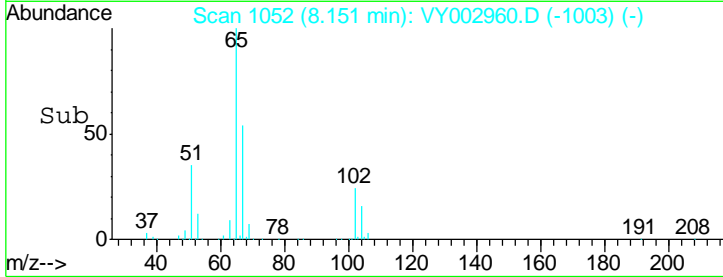
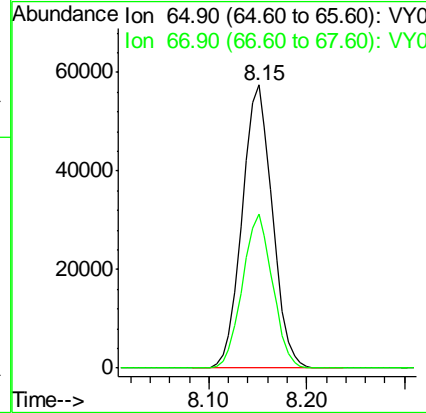
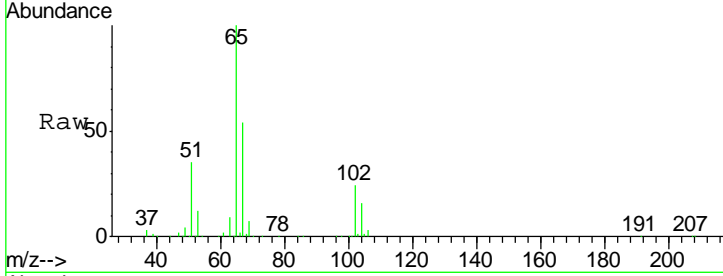




#33  
 1,2-Dichloroethane-d4  
 Concen: 59.715 ug/l  
 RT: 8.15 min Scan# 1052  
 Delta R.T. 0.00 min  
 Lab File: VY002960.D  
 Acq: 20 Jun 2020 00:10

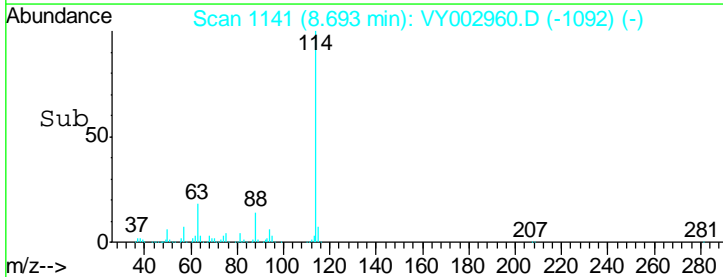
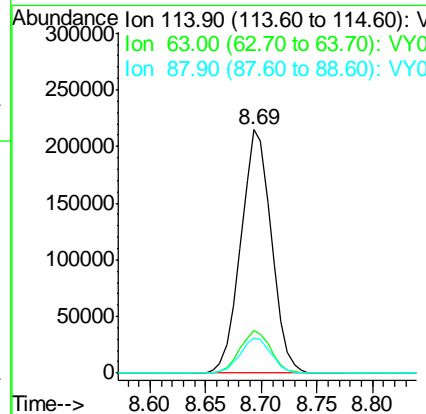
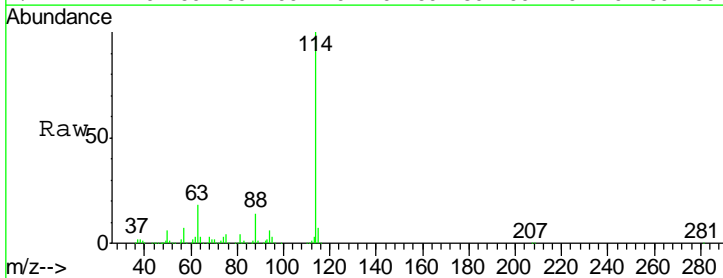
Instrument :  
 MSVOA\_Y  
 ClientSampled :  
 MW-26(18-20)

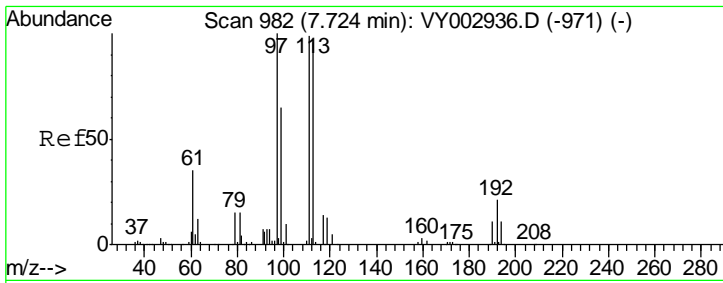
Tgt Ion: 65 Resp: 123114  
 Ion Ratio Lower Upper  
 65 100  
 67 54.0 0.0 109.4



#34  
 1,4-Difluorobenzene  
 Concen: 50.000 ug/l  
 RT: 8.69 min Scan# 1141  
 Delta R.T. 0.00 min  
 Lab File: VY002960.D  
 Acq: 20 Jun 2020 00:10

Tgt Ion: 114 Resp: 409067  
 Ion Ratio Lower Upper  
 114 100  
 63 17.6 0.0 34.6  
 88 14.4 0.0 29.2

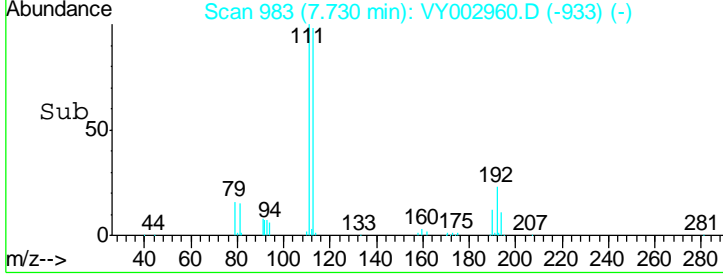
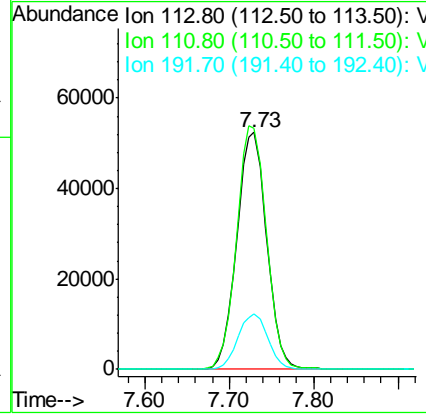
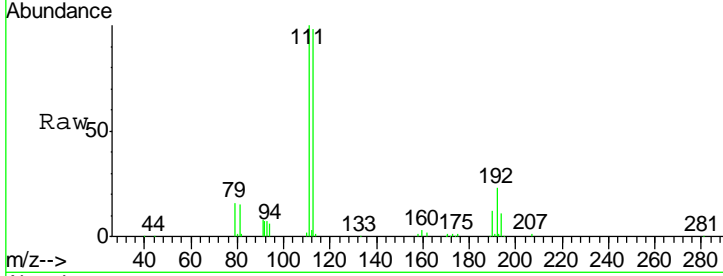




#35  
 Dibromofluoromethane  
 Concen: 54.142 ug/l  
 RT: 7.73 min Scan# 983  
 Delta R.T. 0.01 min  
 Lab File: VY002960.D  
 Acq: 20 Jun 2020 00:10

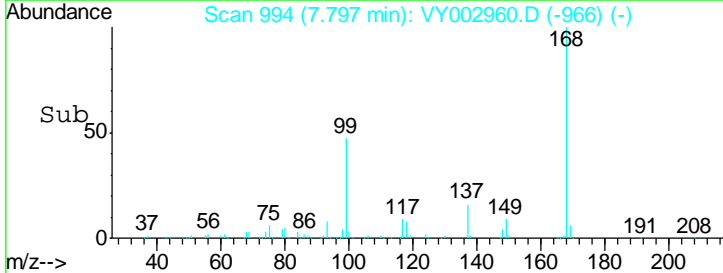
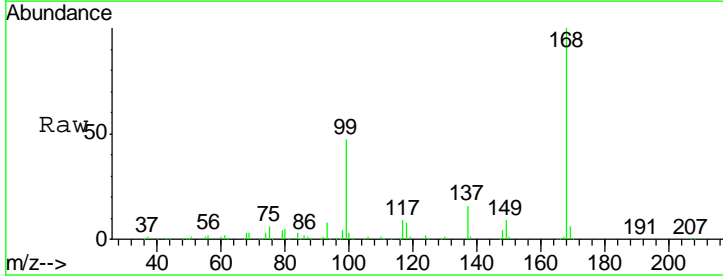
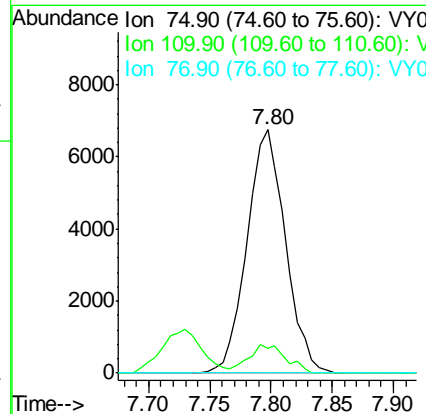
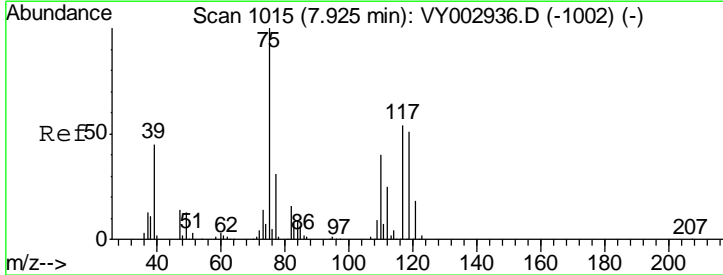
Instrument :  
 MSVOA\_Y  
 ClientSampled :  
 MW-26(18-20)

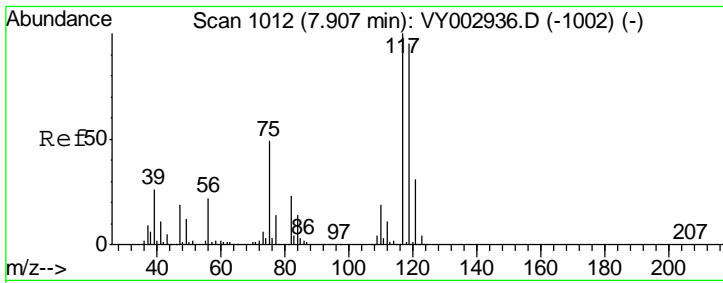
Tgt Ion	Resp	Lower	Upper
113	125318		
113	100		
111	102.5	81.5	122.3
192	23.4	19.2	28.8



#36  
 1,1-Dichloropropene  
 Concen: 4.442 ug/l  
 RT: 7.80 min Scan# 994  
 Delta R.T. -0.13 min  
 Lab File: VY002960.D  
 Acq: 20 Jun 2020 00:10

Tgt Ion	Resp	Lower	Upper
75	14757		
75	100		
110	11.2	19.7	59.0#
77	0.0	25.0	37.4#

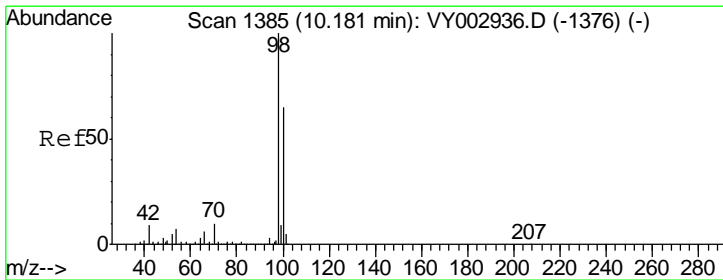
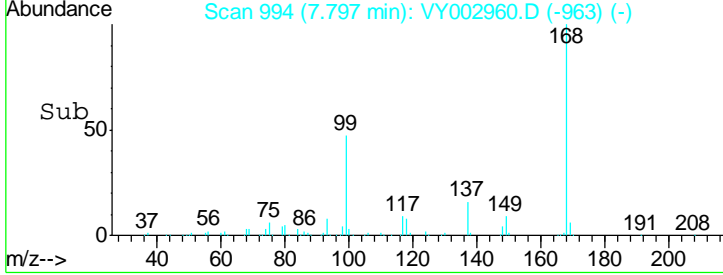
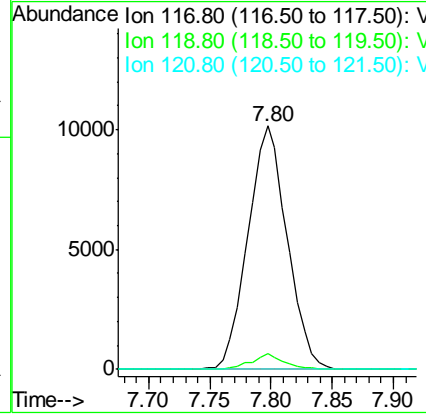
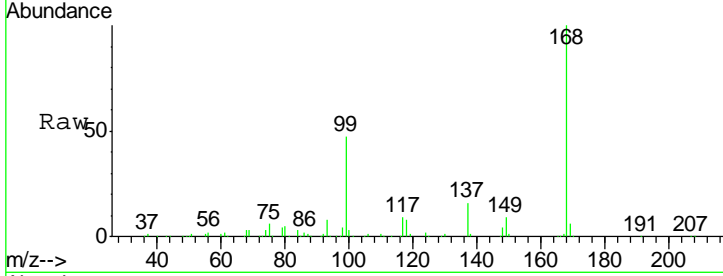




#38  
 Carbon Tetrachloride  
 Concen: 6.184 ug/l  
 RT: 7.80 min Scan# 994  
 Delta R.T. -0.11 min  
 Lab File: VY002960.D  
 Acq: 20 Jun 2020 00:10

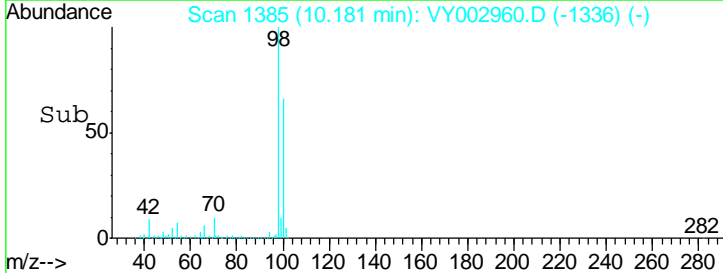
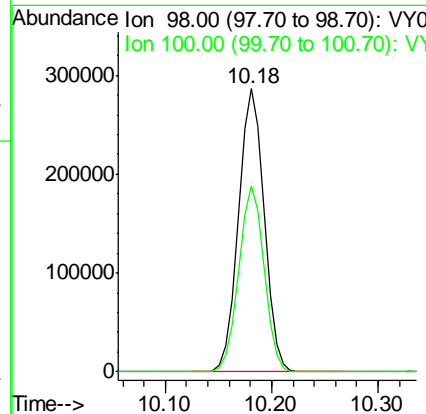
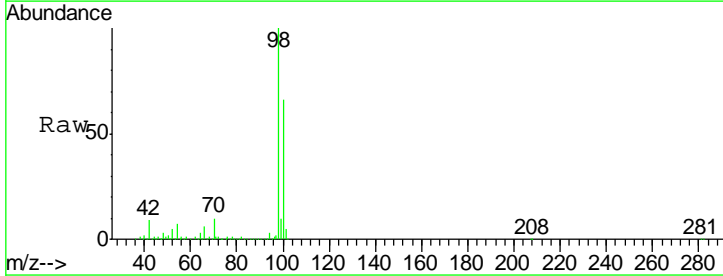
Instrument :  
 MSVOA\_Y  
 ClientSampled :  
 MW-26(18-20)

Tgt Ion	Resp	Lower	Upper
117	100		
119	6.4	76.1	114.1#
121	0.0	24.8	37.2#

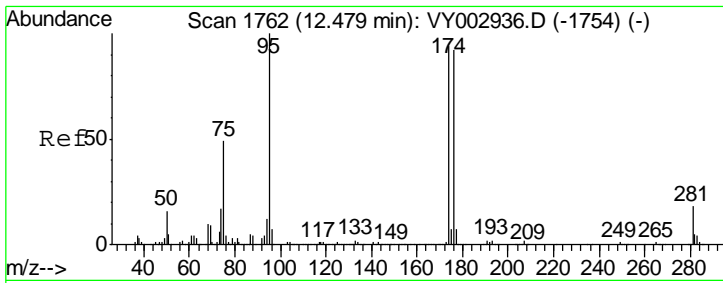


#50  
 Toluene-d8  
 Concen: 53.151 ug/l  
 RT: 10.18 min Scan# 1385  
 Delta R.T. 0.00 min  
 Lab File: VY002960.D  
 Acq: 20 Jun 2020 00:10

Tgt Ion	Resp	Lower	Upper
98	100		
100	64.9	51.9	77.9



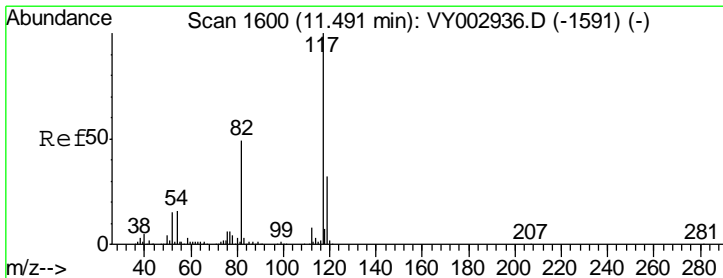
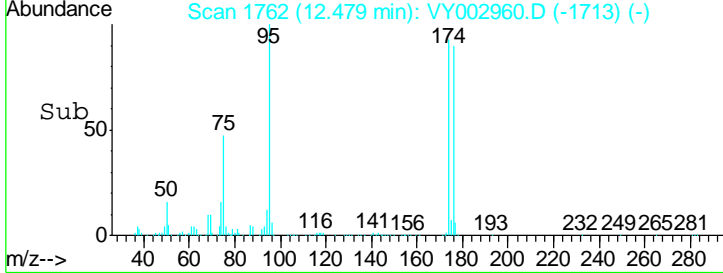
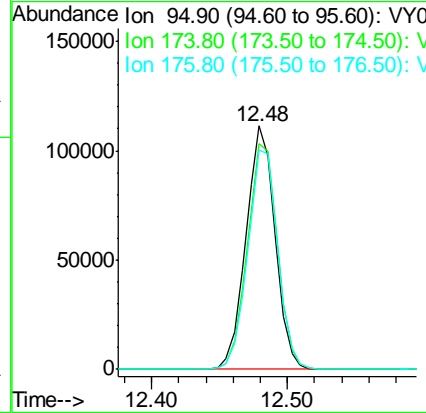
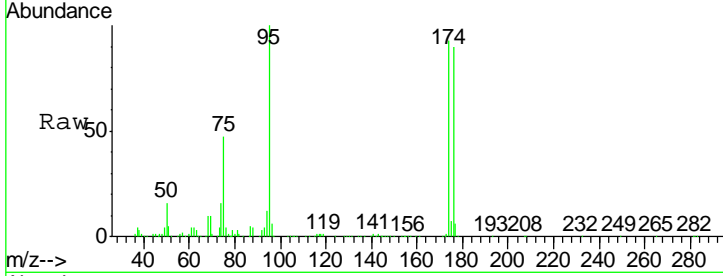




#62  
 4-Bromofluorobenzene  
 Concen: 52.472 ug/l  
 RT: 12.48 min Scan# 1762  
 Delta R.T. 0.00 min  
 Lab File: VY002960.D  
 Acq: 20 Jun 2020 00:10

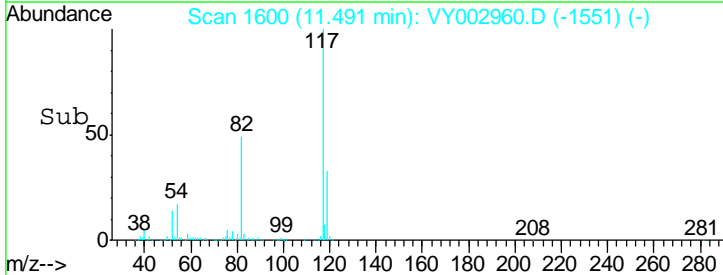
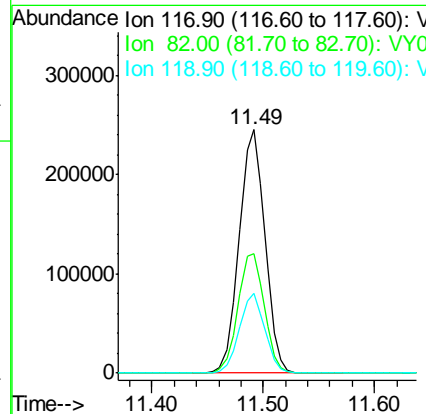
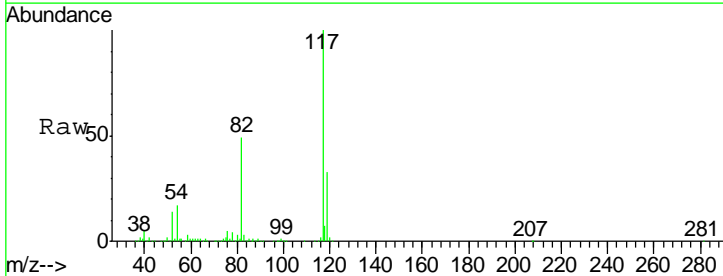
Instrument :  
 MSVOA\_Y  
 ClientSampled :  
 MW-26(18-20)

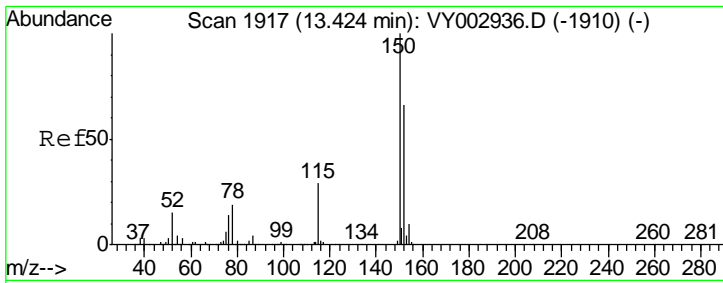
Tgt Ion	Resp	Lower	Upper
95	166110		
174	96.4	0.0	191.2
176	93.0	0.0	186.0



#63  
 Chlorobenzene-d5  
 Concen: 50.000 ug/l  
 RT: 11.49 min Scan# 1600  
 Delta R.T. 0.00 min  
 Lab File: VY002960.D  
 Acq: 20 Jun 2020 00:10

Tgt Ion	Resp	Lower	Upper
117	391905		
82	49.1	39.4	59.0
119	32.5	25.4	38.0

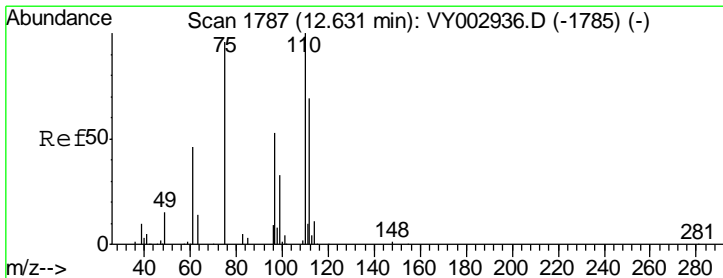
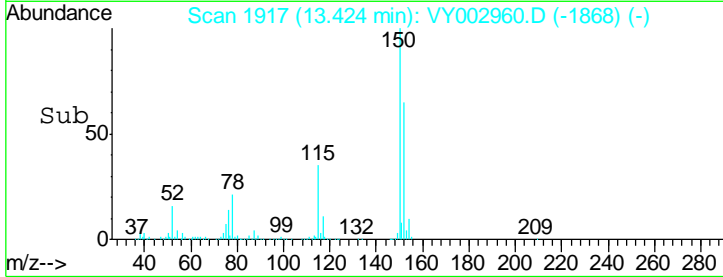
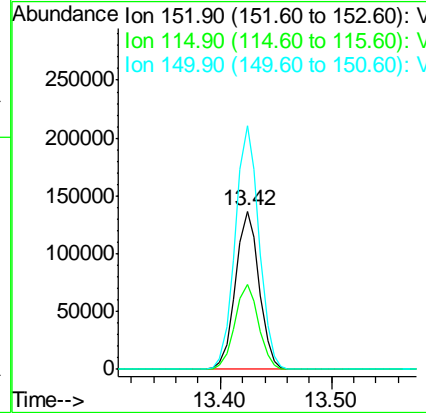
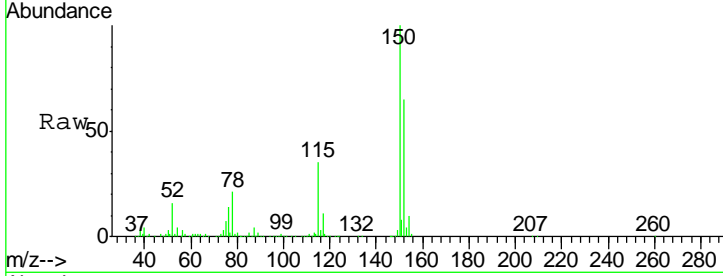




#72  
 1,4-Dichlorobenzene-d4  
 Concen: 50.000 ug/l  
 RT: 13.42 min Scan# 1917  
 Delta R.T. 0.00 min  
 Lab File: VY002960.D  
 Acq: 20 Jun 2020 00:10

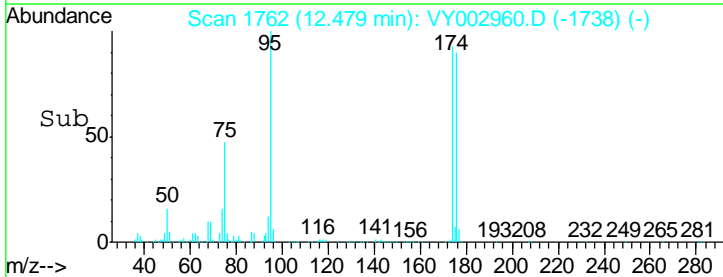
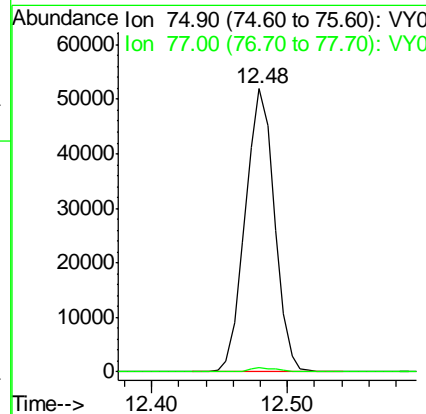
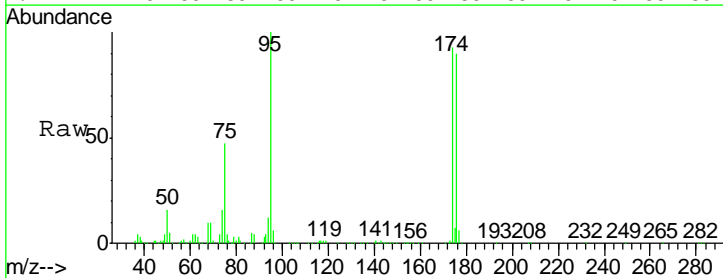
Instrument :  
 MSVOA\_Y  
 ClientSampled :  
 MW-26(18-20)

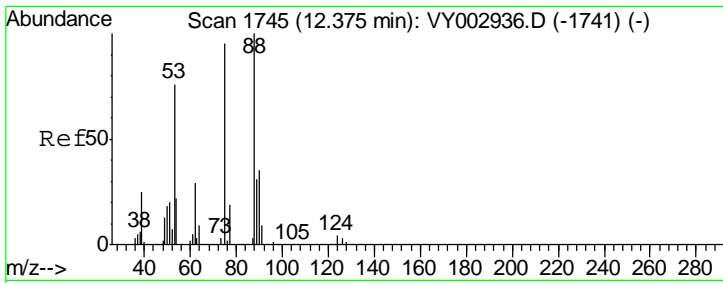
Tgt Ion	Resp	Lower	Upper
152	199989		
115	54.5	26.9	80.6
150	155.6	0.0	341.8



#76  
 1,2,3-Trichloropropane  
 Concen: 45.008 ug/l  
 RT: 12.48 min Scan# 1762  
 Delta R.T. -0.15 min  
 Lab File: VY002960.D  
 Acq: 20 Jun 2020 00:10

Tgt Ion	Resp	Lower	Upper
75	78390		
75	100		
77	1.3	0.0	0.0#

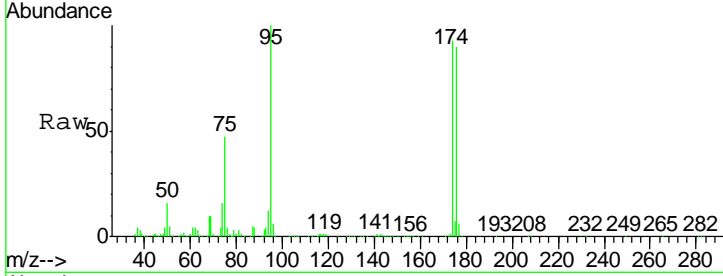




#81  
 trans-1,4-Dichloro-2-butene  
 Concen: 85.929 ug/l  
 RT: 12.48 min Scan# 1762  
 Delta R.T. 0.10 min  
 Lab File: VY002960.D  
 Acq: 20 Jun 2020 00:10

Instrument :  
 MSVOA\_Y  
 ClientSampled :  
 MW-26(18-20)

Tgt Ion	Resp	Lower	Upper
75	100		
53	0.0	65.1	97.7#
89	0.0	38.4	57.6#



Abundance Ion 74.90 (74.60 to 75.60): VY0  
 Ion 53.00 (52.70 to 53.70): VY0  
 Ion 88.90 (88.60 to 89.60): VY0

