

Data Path : Z:\VOASRV\HPCHEM1\MSVOA Y\DATA\VY061920\
 Data File : VY002944.D
 Acq On : 19 Jun 2020 17:48
 Operator : SY/MD
 Sample : L3053-01
 Misc : 5.97G/5ML/MSVOA Y/SOIL
 ALS Vial : 14 Sample Multiplier: 1

Instrument :
 MSVOA_Y
 ClientSampleId :
 VNJ-228

Integration Parameters: RTEINT.P

Integrator: RTE
 Smoothing : ON Filtering: 5
 Sampling : 1 Min Area: 3 % of largest Peak
 Start Thrs: 0.2 Max Peaks: 100
 Stop Thrs : 0 Peak Location: TOP

If leading or trailing edge < 100 prefer < Baseline drop else tangent >
 Peak separation: 5

Method : Z:\VOASRV\HPCHEM1\MSVOA_Y\METHODS\82Y061920S.M
 Title : SW846 8260

Signal : TIC

peak #	R.T. min	first scan	max scan	last scan	PK TY	peak height	corr. area	corr. % max.	% of total
1	4.724	478	490	505	rBV2	24141	77710	5.32%	1.073%
2	7.724	971	982	988	rBV	182495	435138	29.79%	6.011%
3	7.797	988	994	1008	rVB	310564	697968	47.79%	9.642%
4	8.151	1041	1052	1061	rBV	166369	368211	25.21%	5.086%
5	8.693	1132	1141	1151	rBV	469483	927773	63.53%	12.816%
6	10.181	1378	1385	1393	rBV	742729	1273696	87.21%	17.595%
7	11.491	1594	1600	1619	rVB	717854	1460477	100.00%	20.175%
8	12.479	1757	1762	1778	rVB	514819	886565	60.70%	12.247%
9	13.070	1854	1859	1861	rBV3	113873	220202	15.08%	3.042%
10	13.424	1912	1917	1924	rBV	521311	891418	61.04%	12.314%

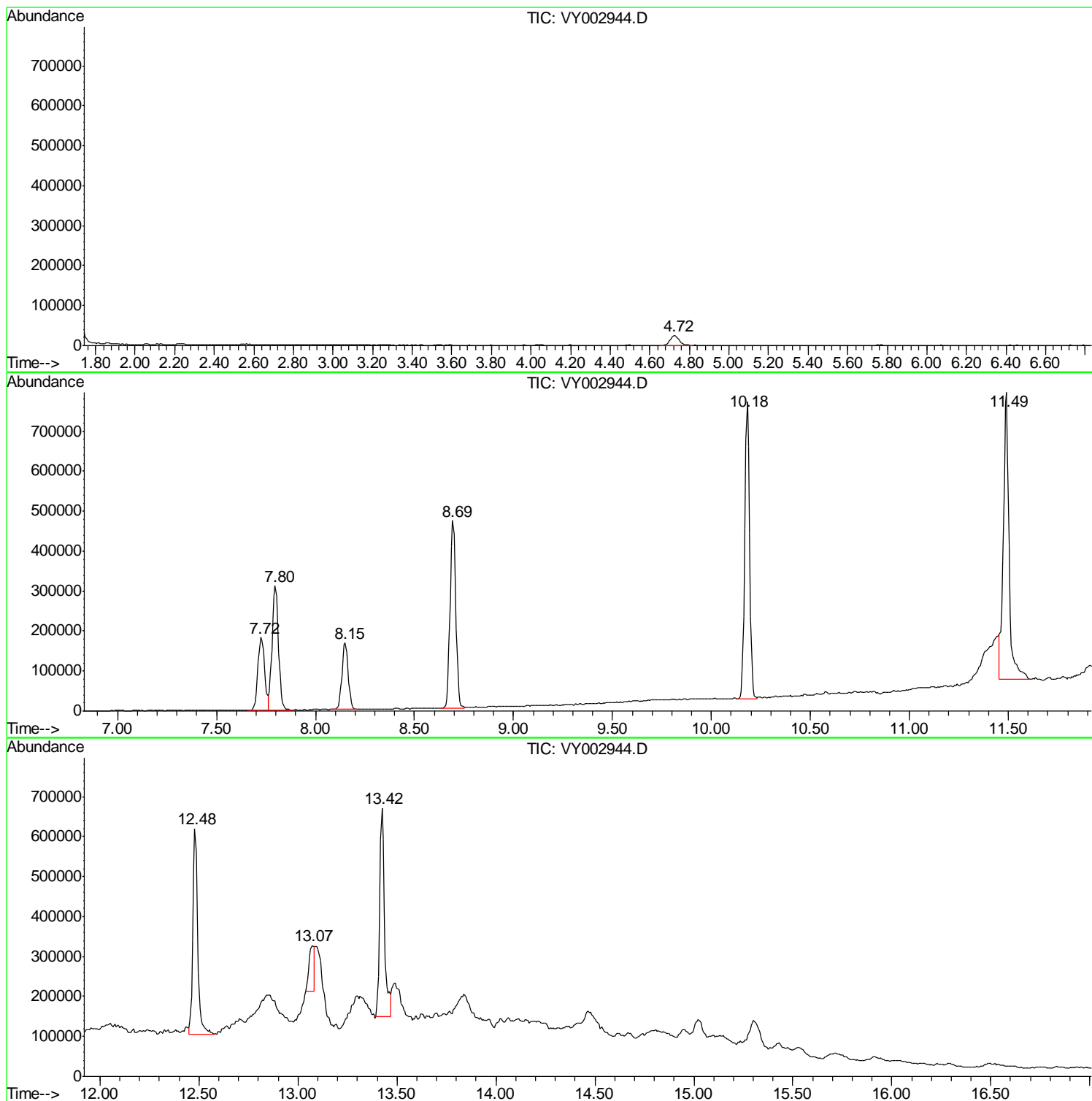
Sum of corrected areas: 7239158

Data Path : Z:\VOASRV\HPCHEM1\MSVOA Y\DATA\VY061920\
Data File : VY002944.D
Acq On : 19 Jun 2020 17:48
Operator : SY/MD
Sample : L3053-01
Misc : 5.97G/5ML/MSVOA Y/SOIL
ALS Vial : 14 Sample Multiplier: 1

Instrument :
MSVOA_Y
ClientSampled :
VNJ-228

Quant Method : Z:\VOASRV\HPCHEM1\MSVOA_Y\METHODS\82Y061920S.M
Quant Title : SW846 8260

TIC Library : C:\DATABASE\NIST11.L
TIC Integration Parameters: LSCINT.P



Data Path : Z:\VOASRV\HPCHEM1\MSVOA Y\DATA\VY061920\
 Data File : VY002944.D
 Acq On : 19 Jun 2020 17:48
 Operator : SY/MD
 Sample : L3053-01
 Misc : 5.97G/5ML/MSVOA Y/SOIL
 ALS Vial : 14 Sample Multiplier: 1

Instrument :
 MSVOA_Y
 ClientSampled :
 VNJ-228

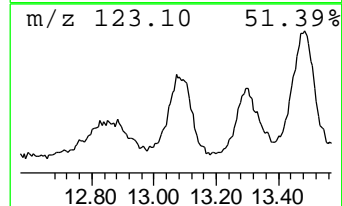
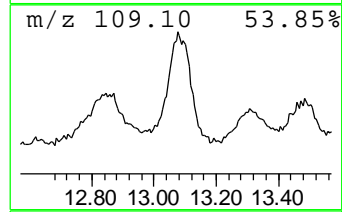
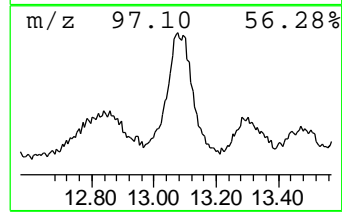
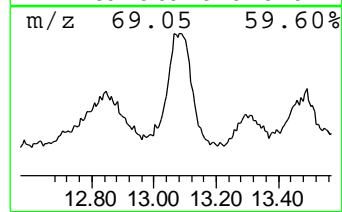
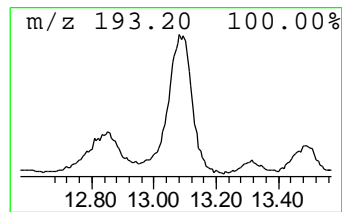
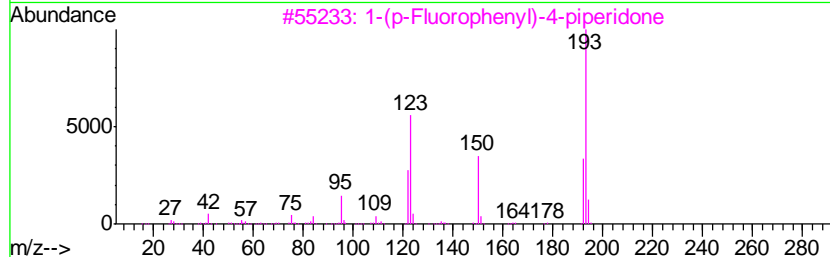
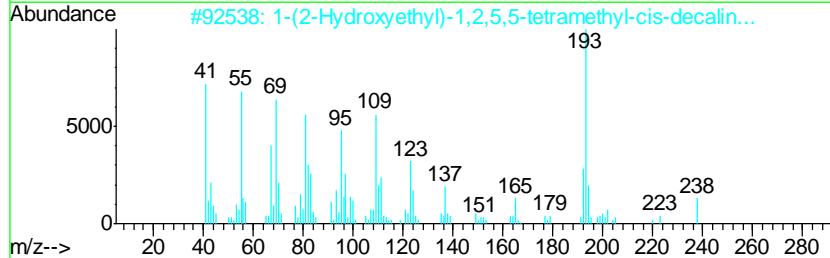
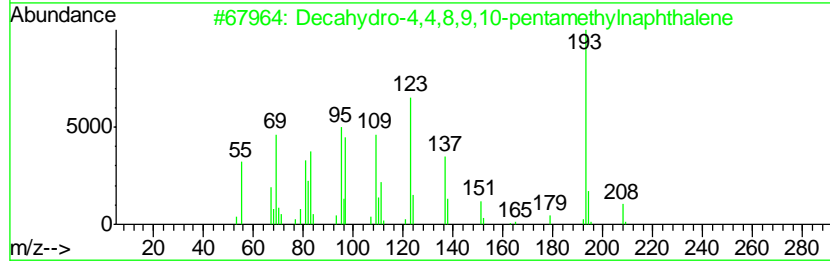
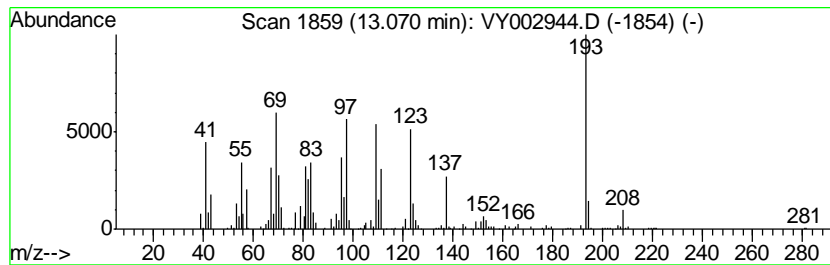
Quant Method : Z:\VOASRV\HPCHEM1\MSVOA_Y\METHODS\82Y061920S.M
 Quant Title : SW846 8260

TIC Library : C:\DATABASE\NIST11.L
 TIC Integration Parameters: LSCINT.P

 Peak Number 2 Decahydro-4,4,8,9,10-pentam... Concentration Rank 1

R.T.	EstConc	Area	Relative to ISTD	R.T.
13.07	12.35 ug/l	220202	1,4-Dichlorobenzene-d4	13.42

Hit#	of	Tentative ID	MW	MolForm	CAS#	Qual
1	5	Decahydro-4,4,8,9,10-pentamethyl...	208	C15H28	080655-44-3	90
2		1-(2-Hydroxyethyl)-1,2,5,5-tetra...	238	C16H30O	1000298-97-4	43
3		1-(p-Fluorophenyl)-4-piperidone	193	C11H12FNO	1000238-56-7	43
4		3-Cyclohexene-1-carboxaldehyde, ...	152	C10H16O	040702-26-9	22
5		[1,1'-Biphenyl]-4-acetonitrile	193	C14H11N	031603-77-7	14



Data Path : Z:\VOASRV\HPCHEM1\MSVOA_Y\DATA\VY061920\
Data File : VY002944.D
Acq On : 19 Jun 2020 17:48
Operator : SY/MD
Sample : L3053-01
Misc : 5.97G/5ML/MSVOA_Y/SOIL
ALS Vial : 14 Sample Multiplier: 1

Instrument :
MSVOA_Y
ClientSampleId :
VNJ-228

Quant Method : Z:\VOASRV\HPCHEM1\MSVOA_Y\METHODS\82Y061920S.M
Quant Title : SW846 8260

TIC Library : C:\DATABASE\NIST11.L
TIC Integration Parameters: LSCINT.P

TIC Top Hit name	RT	EstConc	Units	Response	--Internal Standard--			
					#	RT	Resp	Conc
Decahydro-4,4,8,9...	13.07	12.4	ug/l	220202	4	13.42	891418	50.0