

Data Path : Z:\voasrv\HPCHEM1\MSVOA_Y\Data\VY062023\
 Data File : VY014290.D
 Acq On : 20 Jun 2023 17:53
 Operator : KP/MD
 Sample : 03298-12
 Misc : 5.82g/5.0mL/MSVOA_Y/SOIL
 ALS Vial : 19 Sample Multiplier: 1

Instrument :
 MSVOA_Y
 ClientSampleId :
 TOTAL-VOC-TW-05-GRAB-7

Quant Time: Jun 21 02:09:07 2023
 Quant Method : Z:\voasrv\HPCHEM1\MSVOA_Y\methods\82Y060923S.M
 Quant Title : SW846 8260
 QLast Update : Fri Jun 09 18:07:13 2023
 Response via : Initial Calibration

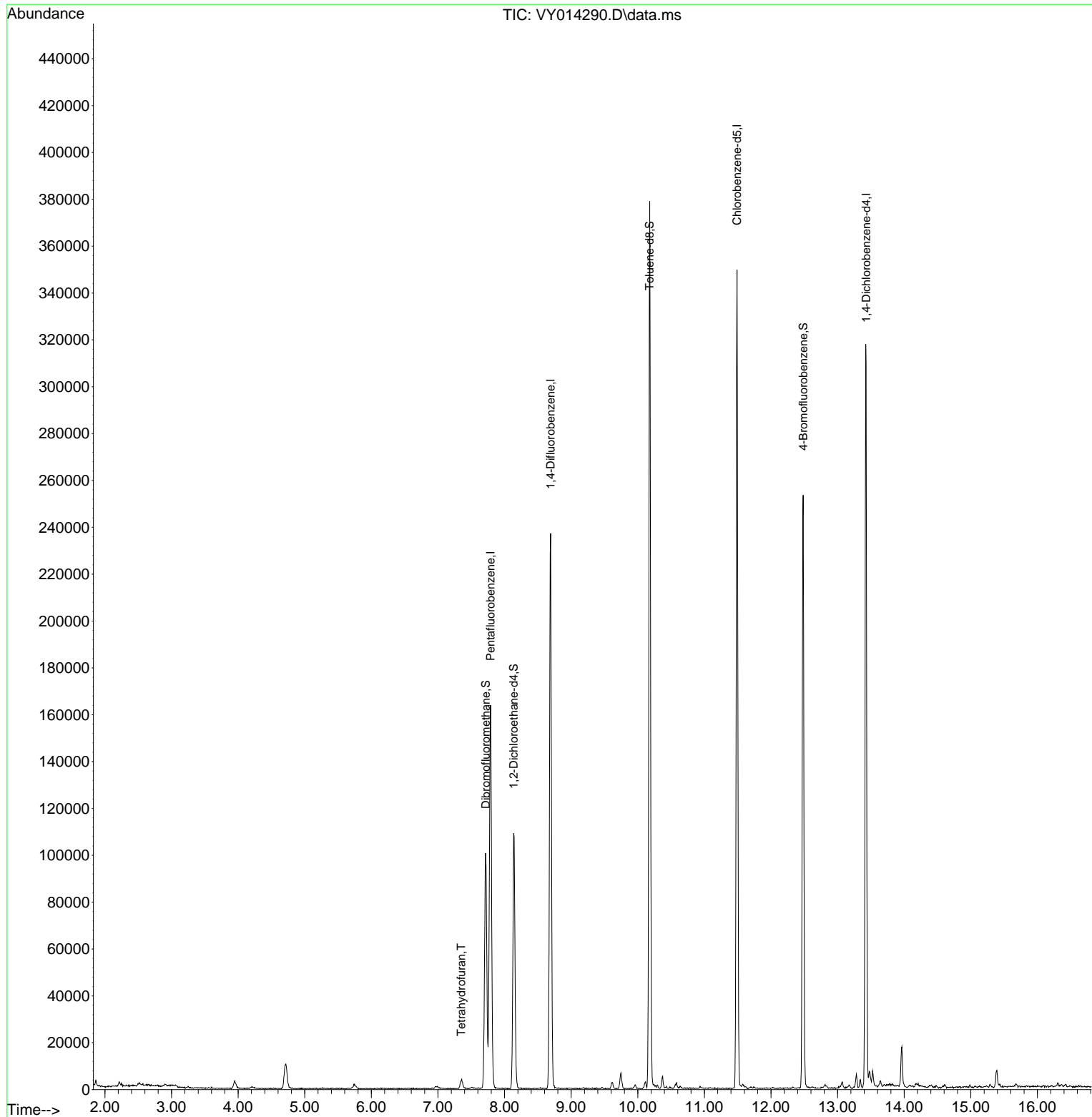
Compound	R.T.	QIon	Response	Conc	Units	Dev(Min)
Internal Standards						
1) Pentafluorobenzene	7.789	168	127039	50.000	ug/l	0.00
34) 1,4-Difluorobenzene	8.691	114	198528	50.000	ug/l	0.00
63) Chlorobenzene-d5	11.490	117	187367	50.000	ug/l	0.00
72) 1,4-Dichlorobenzene-d4	13.428	152	83719	50.000	ug/l	0.00
System Monitoring Compounds						
33) 1,2-Dichloroethane-d4	8.137	65	89416	50.545	ug/l	0.00
Spiked Amount	50.000	Range	50 - 163	Recovery	=	101.080%
35) Dibromofluoromethane	7.716	113	67965	48.273	ug/l	0.00
Spiked Amount	50.000	Range	54 - 147	Recovery	=	96.540%
50) Toluene-d8	10.179	98	245430	46.628	ug/l	0.00
Spiked Amount	50.000	Range	58 - 134	Recovery	=	93.260%
62) 4-Bromofluorobenzene	12.483	95	71188	38.073	ug/l	0.00
Spiked Amount	50.000	Range	30 - 143	Recovery	=	76.140%
Target Compounds						
29) Tetrahydrofuran	7.350	42	2984	7.169	ug/l #	53

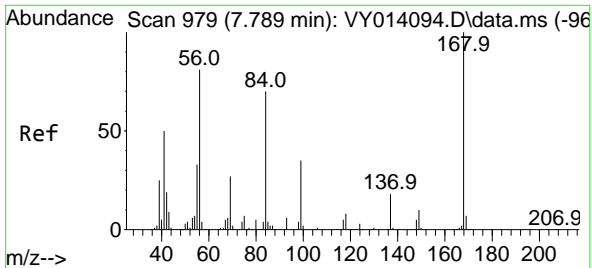
(#) = qualifier out of range (m) = manual integration (+) = signals summed

Data Path : Z:\voasrv\HPCHEM1\MSVOA_Y\Data\VY062023\
 Data File : VY014290.D
 Acq On : 20 Jun 2023 17:53
 Operator : KP/MD
 Sample : 03298-12
 Misc : 5.82g/5.0mL/MSVOA_Y/SOIL
 ALS Vial : 19 Sample Multiplier: 1

Instrument :
 MSVOA_Y
ClientSampleId :
 TOTAL-VOC-TW-05-GRAB-7

Quant Time: Jun 21 02:09:07 2023
 Quant Method : Z:\voasrv\HPCHEM1\MSVOA_Y\methods\82Y060923S.M
 Quant Title : SW846 8260
 QLast Update : Fri Jun 09 18:07:13 2023
 Response via : Initial Calibration

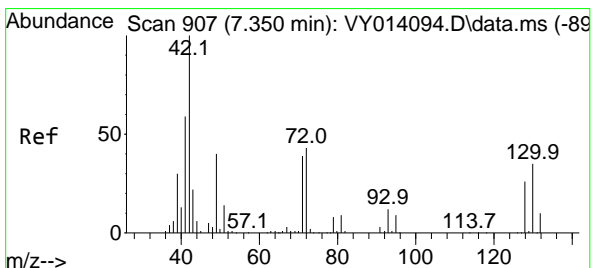
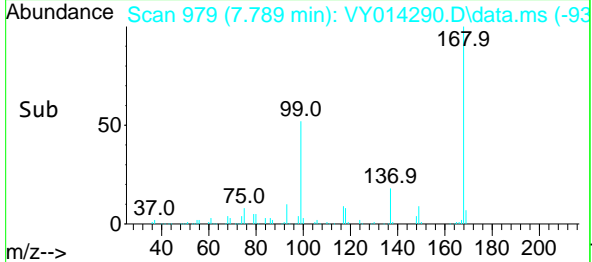
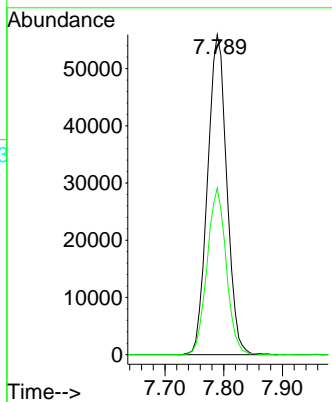
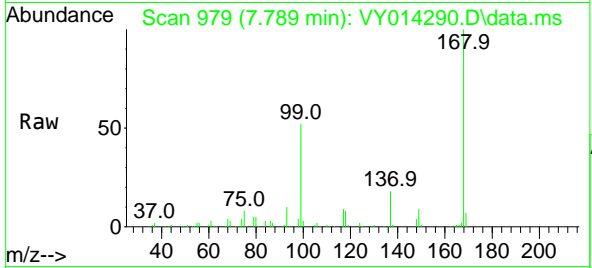




#1
 Pentafluorobenzene
 Concen: 50.000 ug/l
 RT: 7.789 min Scan# 91
 Delta R.T. 0.000 min
 Lab File: VY014290.D
 Acq: 20 Jun 2023 17:53

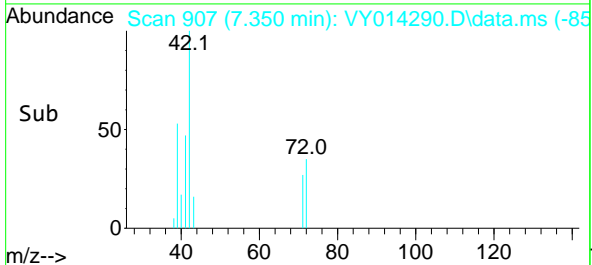
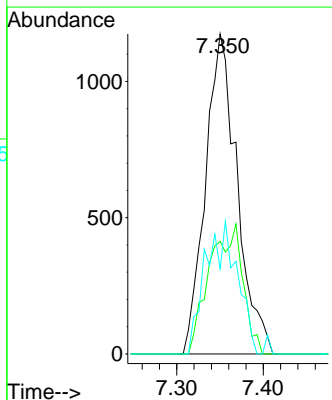
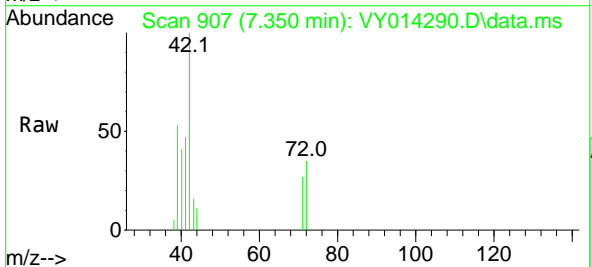
Instrument : MSVOA_Y
 ClientSampleId : TOTAL-VOC-TW-05-GRAB-7

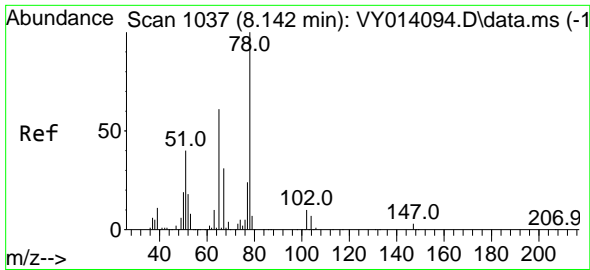
Tgt Ion:168 Resp: 127039
 Ion Ratio Lower Upper
 168 100
 99 52.0 43.4 65.0



#29
 Tetrahydrofuran
 Concen: 7.169 ug/l
 RT: 7.350 min Scan# 907
 Delta R.T. 0.000 min
 Lab File: VY014290.D
 Acq: 20 Jun 2023 17:53

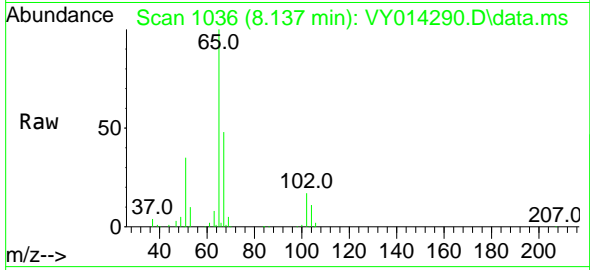
Tgt Ion: 42 Resp: 2984
 Ion Ratio Lower Upper
 42 100
 72 0.0 32.8 49.2#
 71 21.5 31.0 46.4#



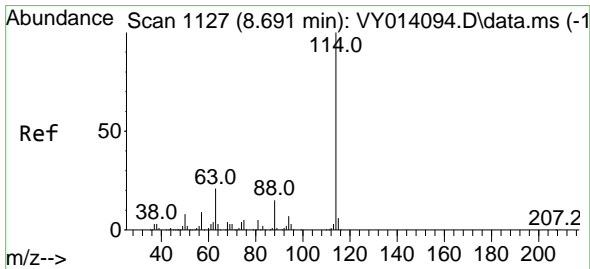
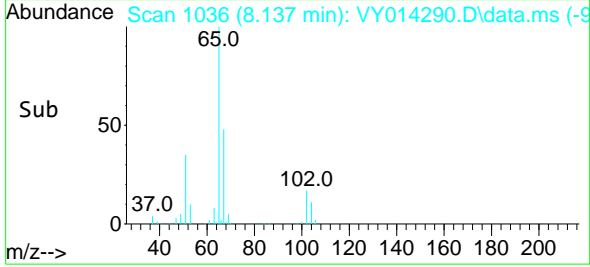
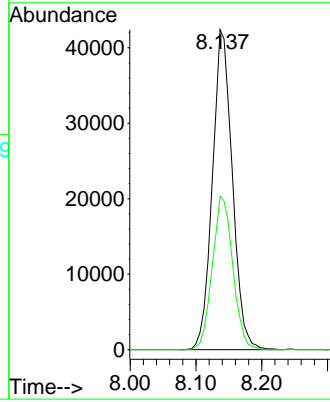


#33
 1,2-Dichloroethane-d4
 Concen: 50.545 ug/l
 RT: 8.137 min Scan# 1036
 Delta R.T. -0.005 min
 Lab File: VY014290.D
 Acq: 20 Jun 2023 17:53

Instrument : MSVOA_Y
 ClientSampleId : TOTAL-VOC-TW-05-GRAB-7

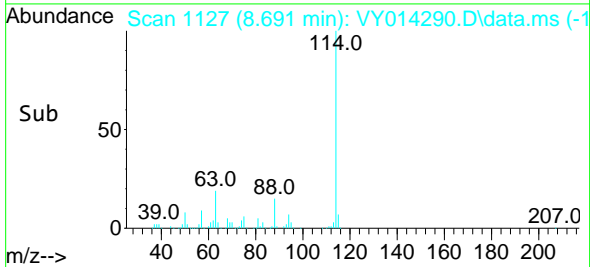
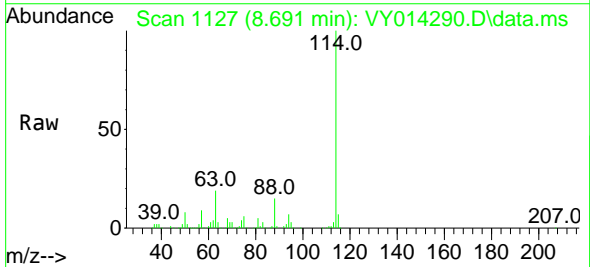
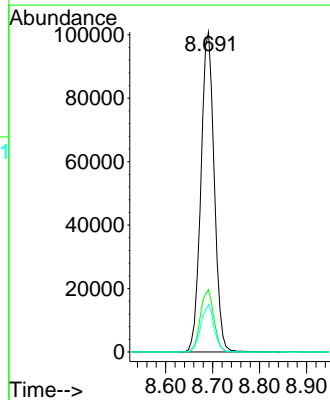


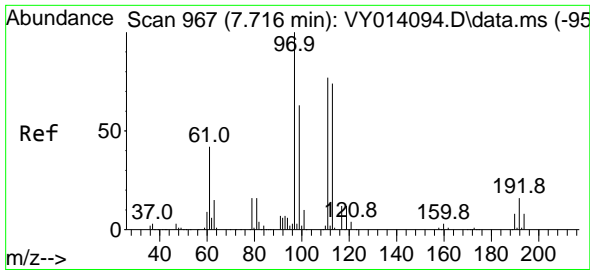
Tgt Ion: 65 Resp: 89416
 Ion Ratio Lower Upper
 65 100
 67 49.4 0.0 101.8



#34
 1,4-Difluorobenzene
 Concen: 50.000 ug/l
 RT: 8.691 min Scan# 1127
 Delta R.T. 0.000 min
 Lab File: VY014290.D
 Acq: 20 Jun 2023 17:53

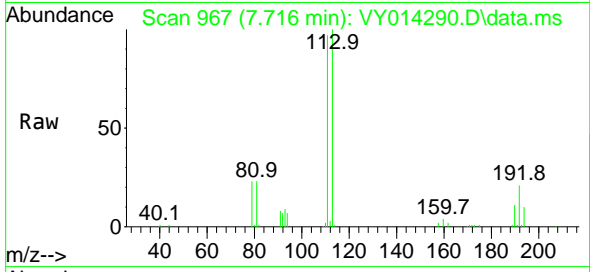
Tgt Ion: 114 Resp: 198528
 Ion Ratio Lower Upper
 114 100
 63 19.4 0.0 42.4
 88 14.8 0.0 30.6



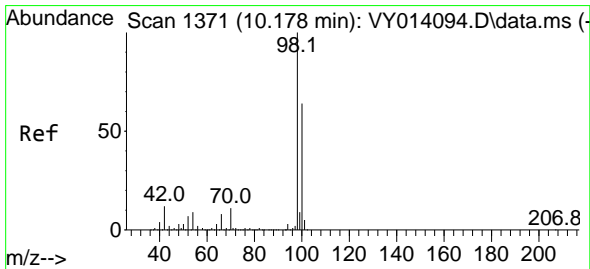
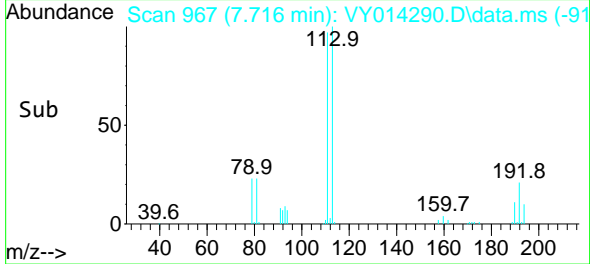
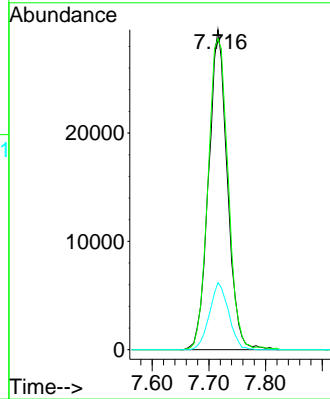


#35
 Dibromofluoromethane
 Concen: 48.273 ug/l
 RT: 7.716 min Scan# 967
 Delta R.T. -0.000 min
 Lab File: VY014290.D
 Acq: 20 Jun 2023 17:53

Instrument : MSVOA_Y
 ClientSampleId : TOTAL-VOC-TW-05-GRAB-7

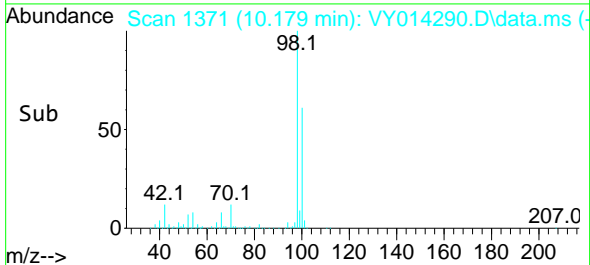
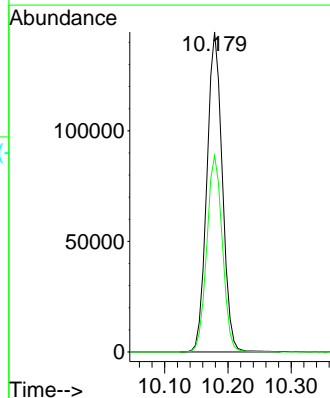
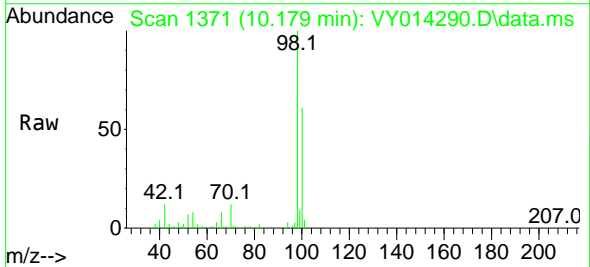


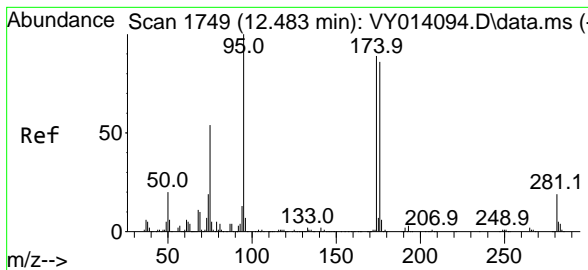
Tgt Ion:113 Resp: 67965
 Ion Ratio Lower Upper
 113 100
 111 103.9 81.3 121.9
 192 21.3 16.9 25.3



#50
 Toluene-d8
 Concen: 46.628 ug/l
 RT: 10.179 min Scan# 1371
 Delta R.T. 0.001 min
 Lab File: VY014290.D
 Acq: 20 Jun 2023 17:53

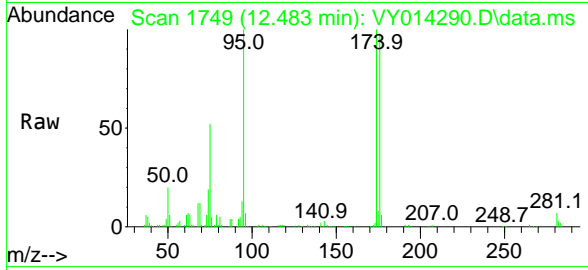
Tgt Ion: 98 Resp: 245430
 Ion Ratio Lower Upper
 98 100
 100 61.9 50.1 75.1





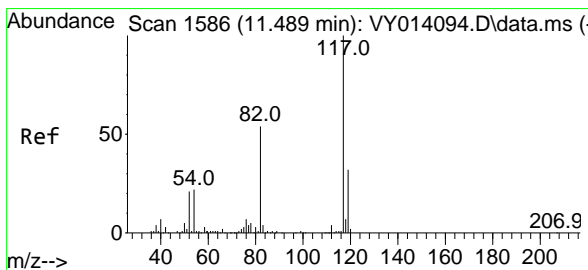
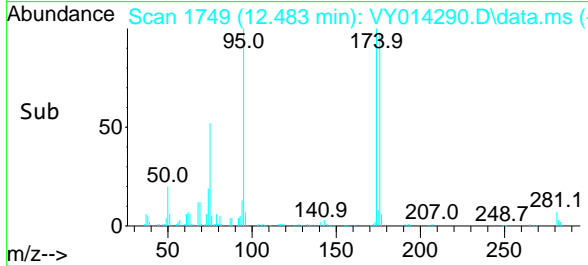
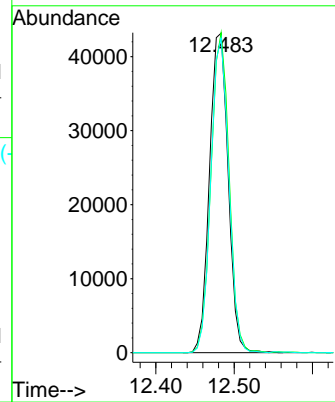
#62
 4-Bromofluorobenzene
 Concen: 38.073 ug/l
 RT: 12.483 min Scan# 1749
 Delta R.T. 0.000 min
 Lab File: VY014290.D
 Acq: 20 Jun 2023 17:53

Instrument : MSVOA_Y
 ClientSampleId : TOTAL-VOC-TW-05-GRAB-7

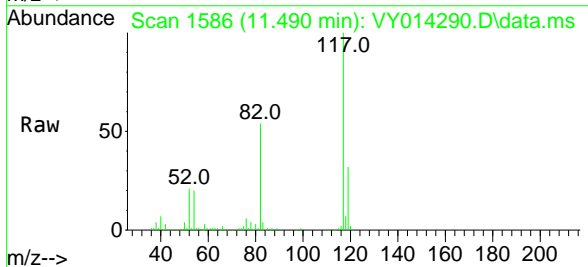


Tgt Ion: 95 Resp: 71188

Ion	Ratio	Lower	Upper
95	100		
174	97.1	0.0	178.2
176	94.8	0.0	173.8

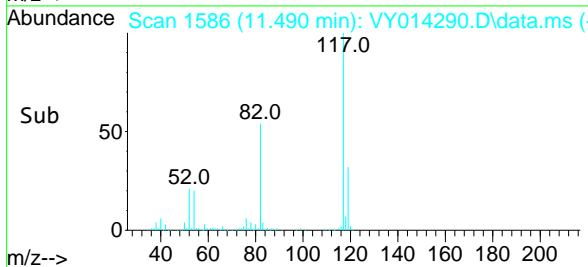
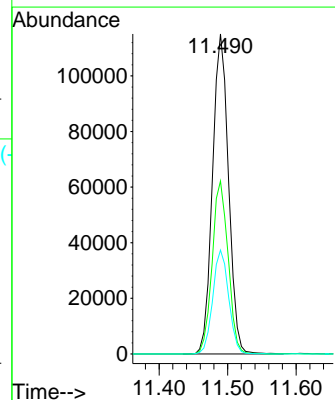


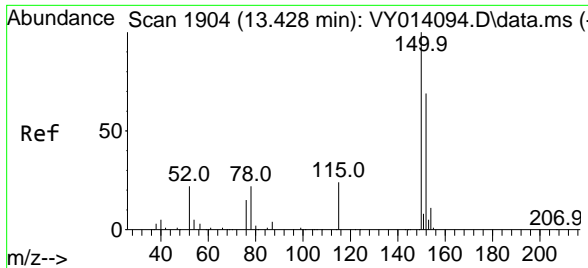
#63
 Chlorobenzene-d5
 Concen: 50.000 ug/l
 RT: 11.490 min Scan# 1586
 Delta R.T. 0.001 min
 Lab File: VY014290.D
 Acq: 20 Jun 2023 17:53



Tgt Ion: 117 Resp: 187367

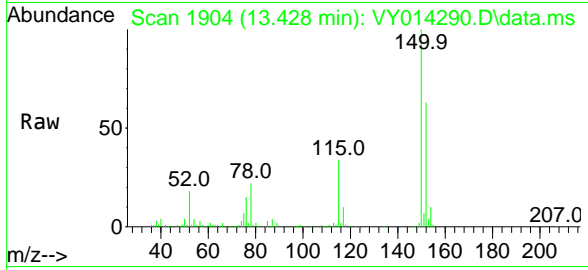
Ion	Ratio	Lower	Upper
117	100		
82	54.1	43.4	65.0
119	32.4	26.3	39.5





#72
 1,4-Dichlorobenzene-d4
 Concen: 50.000 ug/l
 RT: 13.428 min Scan# 1904
 Delta R.T. 0.000 min
 Lab File: VY014290.D
 Acq: 20 Jun 2023 17:53

Instrument : MSVOA_Y
 ClientSampleId : TOTAL-VOC-TW-05-GRAB-7



Tgt Ion	Resp	Lower	Upper
152	83719		
115	56.1	28.8	86.5
150	158.6	0.0	348.8

