

Data Path : Z:\voasrv\HPCHEM1\MSVOA\_Y\Data\VY062023\  
 Data File : VY014291.D  
 Acq On : 20 Jun 2023 18:17  
 Operator : KP/MD  
 Sample : 03298-13  
 Misc : 8.80g/5.0mL/MSVOA\_Y/SOIL  
 ALS Vial : 20 Sample Multiplier: 1

Instrument :  
 MSVOA\_Y  
 ClientSampleId :  
 TOTAL-VOC-TP6-07-5N-4

Integration Parameters: RTEINT.P

Integrator: RTE  
 Smoothing : ON  
 Sampling : 1  
 Start Thrs : 0.2  
 Stop Thrs : 0

Filtering: 5  
 Min Area: 3 % of largest Peak  
 Max Peaks: 100  
 Peak Location: TOP

If leading or trailing edge < 100 prefer < Baseline drop else tangent >  
 Peak separation: 5

Method : Z:\voasrv\HPCHEM1\MSVOA\_Y\methods\82Y060923S.M  
 Title : SW846 8260

Signal : TIC: VY014291.D\data.ms

peak #	R.T. min	first scan	max scan	last scan	PK TY	peak height	corr. area	corr. % max.	% of total
1	1.863	3	7	15	rVB2	29943	42347	4.78%	0.650%
2	2.217	60	65	76	rVB2	19101	42986	4.85%	0.659%
3	2.521	109	115	123	rBV9	3990	9971	1.13%	0.153%
4	2.692	136	143	148	rBV2	10959	20297	2.29%	0.311%
5	3.247	228	234	246	rVB5	5888	16965	1.92%	0.260%
6	3.692	299	307	314	rBV3	8609	22327	2.52%	0.343%
7	3.948	340	349	359	rBV	59190	165601	18.70%	2.540%
8	4.192	379	389	401	rBV2	13947	43685	4.93%	0.670%
9	4.710	464	474	485	rBV5	7821	27396	3.09%	0.420%
10	6.984	834	847	861	rBV2	21997	63439	7.16%	0.973%
11	7.344	896	906	919	rBV6	4914	17223	1.94%	0.264%
12	7.716	958	967	973	rBV	133652	317695	35.87%	4.874%
13	7.789	973	979	989	rVB	229506	510810	57.67%	7.836%
14	8.142	1027	1037	1047	rBV2	140950	323192	36.49%	4.958%
15	8.545	1095	1103	1112	rBV3	5174	12121	1.37%	0.186%
16	8.691	1118	1127	1137	rBV	330717	654145	73.86%	10.035%
17	8.929	1155	1166	1173	rBV7	4823	15311	1.73%	0.235%
18	9.185	1203	1208	1214	rVB6	7300	15476	1.75%	0.237%
19	9.983	1332	1339	1345	rVB6	3675	8925	1.01%	0.137%
20	10.179	1363	1371	1378	rBV	515792	885687	100.00%	13.587%
21	10.246	1378	1382	1388	rVB	19618	33849	3.82%	0.519%
22	11.093	1515	1521	1525	rVB3	5065	9240	1.04%	0.142%
23	11.489	1578	1586	1595	rBV	453991	726094	81.98%	11.139%
24	11.593	1597	1603	1612	rVB4	6996	15250	1.72%	0.234%
25	11.697	1612	1620	1624	rBV4	9332	23367	2.64%	0.358%
26	12.038	1671	1676	1682	rVV5	10166	21856	2.47%	0.335%
27	12.233	1696	1708	1715	rBV7	13778	32395	3.66%	0.497%
28	12.331	1717	1724	1729	rBV	74357	120156	13.57%	1.843%
29	12.392	1729	1734	1739	rVV	69320	107285	12.11%	1.646%
30	12.483	1743	1749	1755	rVV	329473	523606	59.12%	8.032%
31	12.581	1755	1765	1773	rVV3	63860	164492	18.57%	2.523%
32	12.678	1777	1781	1785	rVV2	13411	24073	2.72%	0.369%
33	12.739	1785	1791	1794	rVV6	6251	17475	1.97%	0.268%
34	12.788	1794	1799	1813	rVB2	131126	265623	29.99%	4.075%
35	12.910	1814	1819	1824	rBV2	28076	47208	5.33%	0.724%
36	13.044	1836	1841	1850	rVB4	10798	21204	2.39%	0.325%

Data Path : Z:\voasrv\HPCHEM1\MSVOA\_Y\Data\VY062023\  
 Data File : VY014291.D  
 Acq On : 20 Jun 2023 18:17  
 Operator : KP/MD  
 Sample : 03298-13  
 Misc : 8.80g/5.0mL/MSVOA\_Y/SOIL  
 ALS Vial : 20 Sample Multiplier: 1

Instrument :  
 MSVOA\_Y  
 ClientSampleId :  
 TOTAL-VOC-TP6-07-5N-4

Integration Parameters: RTEINT.P  
 Integrator: RTE  
 Smoothing : ON Filtering: 5  
 Sampling : 1 Min Area: 3 % of largest Peak  
 Start Thrs: 0.2 Max Peaks: 100  
 Stop Thrs : 0 Peak Location: TOP

If leading or trailing edge < 100 prefer < Baseline drop else tangent >  
 Peak separation: 5

Method : Z:\voasrv\HPCHEM1\MSVOA\_Y\methods\82Y060923S.M  
 Title : SW846 8260

37	13.123	1850	1854	1856	rBV	12834	18749	2.12%	0.288%
38	13.209	1865	1868	1871	rBV4	7007	9800	1.11%	0.150%
39	13.312	1880	1885	1890	rBV	47680	73727	8.32%	1.131%
40	13.367	1890	1894	1898	rVV	47172	67221	7.59%	1.031%
41	13.422	1898	1903	1916	rVB	349791	571083	64.48%	8.761%
42	13.526	1916	1920	1925	rVB2	12822	17401	1.96%	0.267%
43	13.629	1932	1937	1941	rBV	24384	39321	4.44%	0.603%
44	13.702	1945	1949	1953	rVV	32681	46724	5.28%	0.717%
45	13.745	1953	1956	1962	rVB6	7617	13028	1.47%	0.200%
46	13.964	1988	1992	2000	rVB2	10543	17303	1.95%	0.265%
47	14.080	2006	2011	2016	rBV2	12291	20500	2.31%	0.314%
48	14.190	2025	2029	2036	rBV6	5321	12079	1.36%	0.185%
49	14.306	2042	2048	2058	rVB4	20805	52993	5.98%	0.813%
50	14.678	2101	2109	2114	rBV6	13080	34366	3.88%	0.527%
51	14.739	2114	2119	2128	rVB5	12611	27248	3.08%	0.418%
52	14.940	2147	2152	2161	rVB3	20914	37647	4.25%	0.578%
53	15.239	2191	2201	2206	rBV	23323	44428	5.02%	0.682%
54	16.293	2368	2374	2381	rBV	8196	18035	2.04%	0.277%
55	16.488	2399	2406	2414	rVB3	14400	28282	3.19%	0.434%

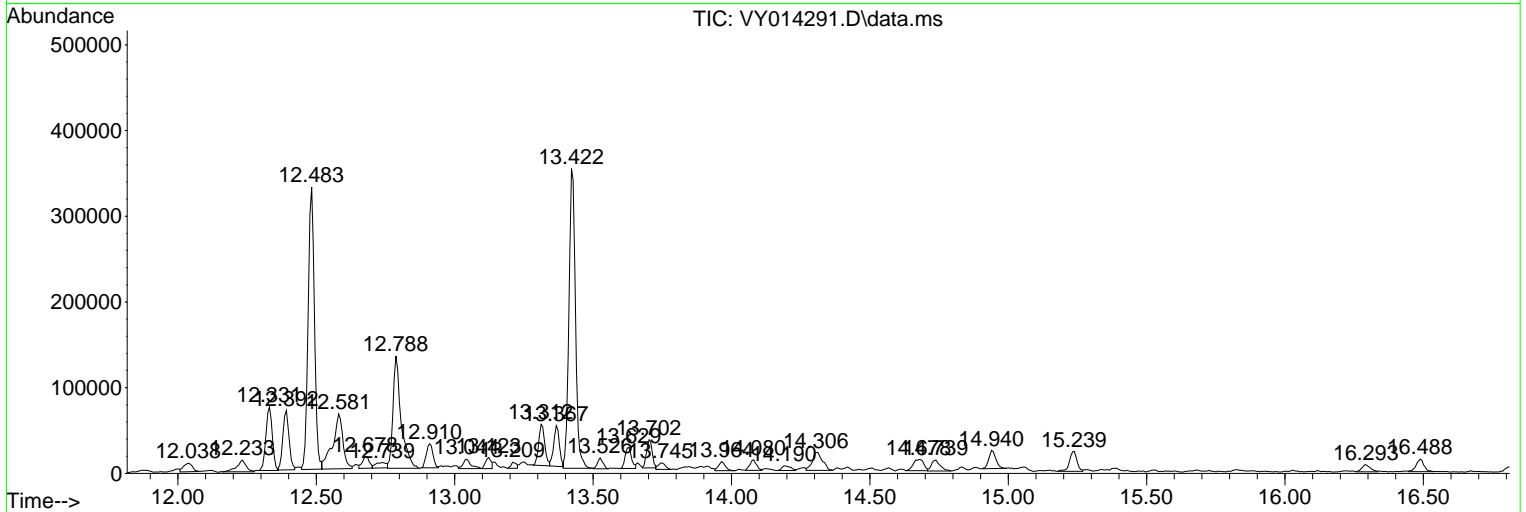
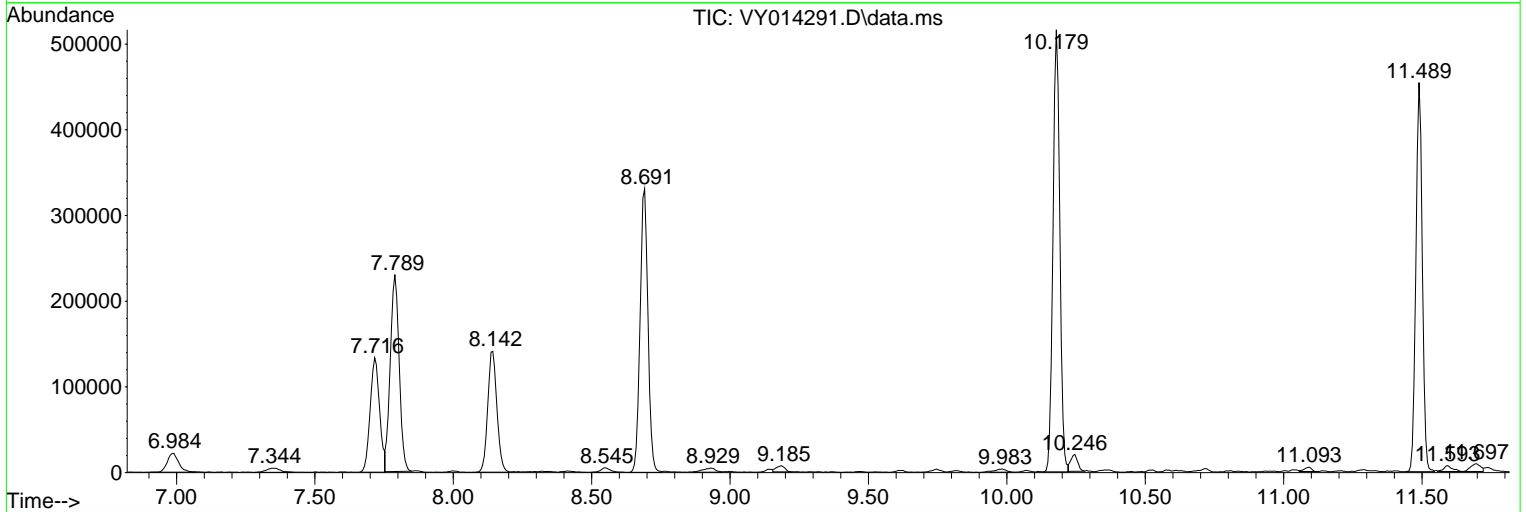
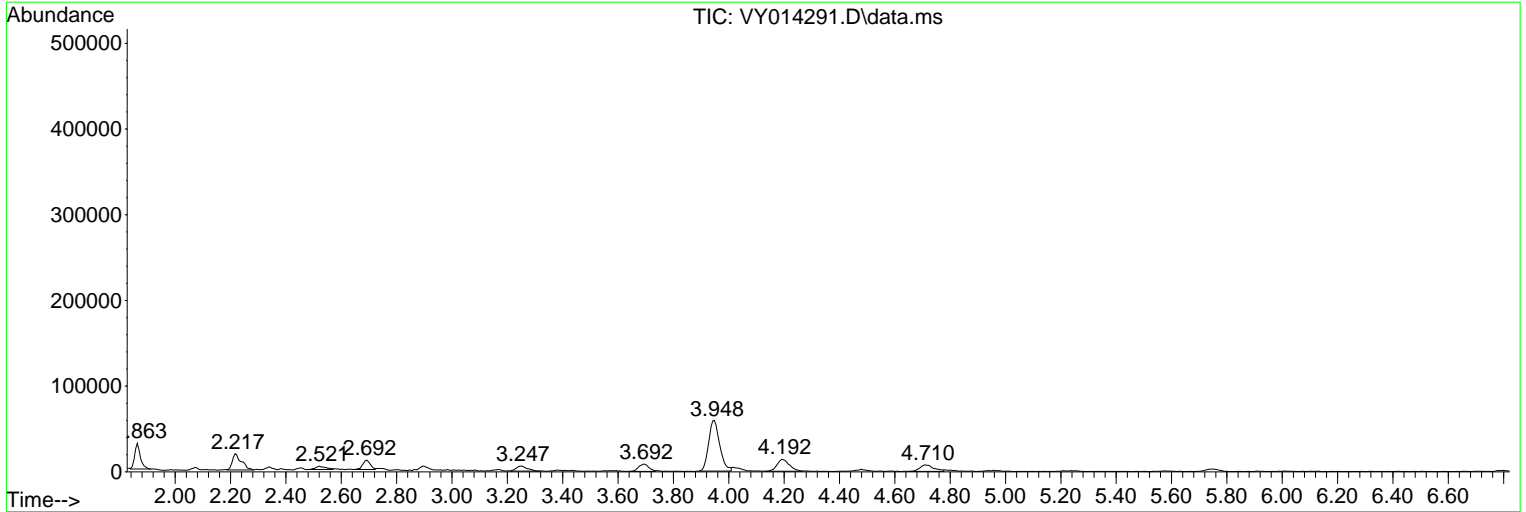
Sum of corrected areas: 6518707

Data Path : Z:\voasrv\HPCHEM1\MSVOA\_Y\Data\VY062023\  
 Data File : VY014291.D  
 Acq On : 20 Jun 2023 18:17  
 Operator : KP/MD  
 Sample : 03298-13  
 Misc : 8.80g/5.0mL/MSVOA\_Y/SOIL  
 ALS Vial : 20 Sample Multiplier: 1

**Instrument :**  
 MSVOA\_Y  
**ClientSampleId :**  
 TOTAL-VOC-TP6-07-5N-4

Quant Method : Z:\voasrv\HPCHEM1\MSVOA\_Y\methods\82Y060923S.M  
 Quant Title : SW846 8260

TIC Library : C:\Database\NIST20.L  
 TIC Integration Parameters: LSCINT.P



Data Path : Z:\voasrv\HPCHEM1\MSVOA\_Y\Data\VY062023\  
 Data File : VY014291.D  
 Acq On : 20 Jun 2023 18:17  
 Operator : KP/MD  
 Sample : 03298-13  
 Misc : 8.80g/5.0mL/MSVOA\_Y/SOIL  
 ALS Vial : 20 Sample Multiplier: 1

Instrument :  
 MSVOA\_Y  
 ClientSampleId :  
 TOTAL-VOC-TP6-07-5N-4

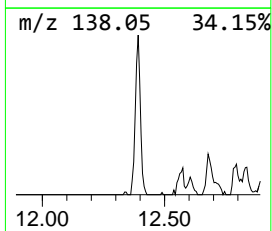
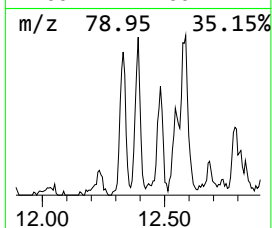
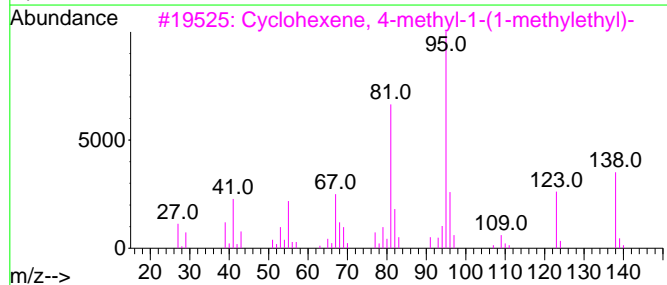
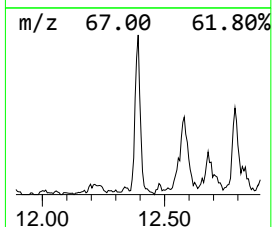
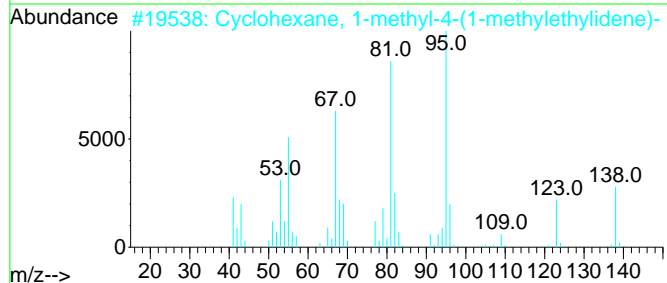
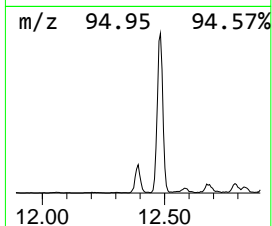
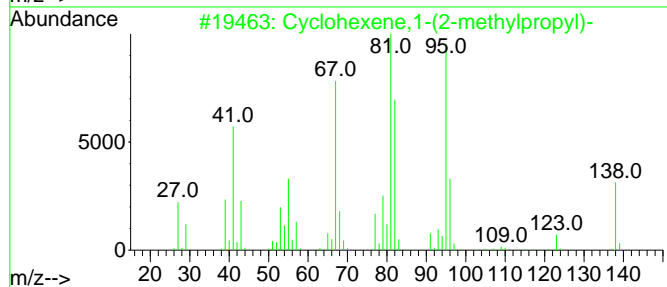
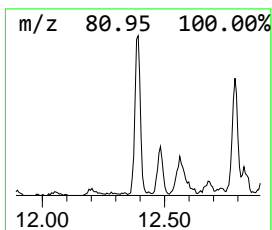
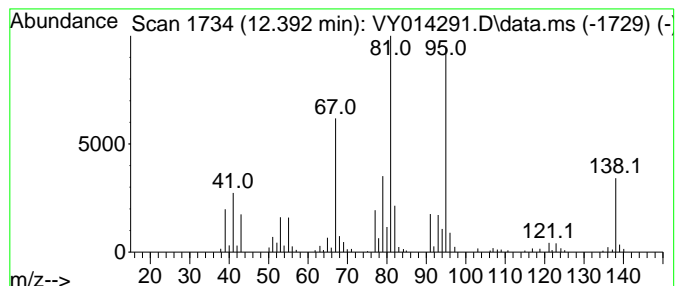
Quant Method : Z:\voasrv\HPCHEM1\MSVOA\_Y\methods\82Y060923S.M  
 Quant Title : SW846 8260

TIC Library : C:\Database\NIST20.L  
 TIC Integration Parameters: LSCINT.P

\*\*\*\*\*  
 Peak Number 1 Cyclohexene,1-(2-methylprop... Concentration Rank 2

R.T.	EstConc	Area	Relative to ISTD	R.T.
12.392	7.39 ug/l	107285	Chlorobenzene-d5	11.489

Hit#	of	5	Tentative ID	MW	MolForm	CAS#	Qual
1			Cyclohexene,1-(2-methylpropyl)-	138	C10H18	003983-03-7	87
2			Cyclohexane, 1-methyl-4-(1-methy...	138	C10H18	001124-27-2	86
3			Cyclohexene, 4-methyl-1-(1-methy...	138	C10H18	000500-00-5	86
4			Cyclohexane, 1-methyl-4-(1-methy...	138	C10H18	001124-25-0	72
5			Bicyclo[4.1.0]heptane, 3,7,7-tri...	138	C10H18	002778-68-9	49



Data Path : Z:\voasrv\HPCHEM1\MSVOA\_Y\Data\VY062023\  
 Data File : VY014291.D  
 Acq On : 20 Jun 2023 18:17  
 Operator : KP/MD  
 Sample : 03298-13  
 Misc : 8.80g/5.0mL/MSVOA\_Y/SOIL  
 ALS Vial : 20 Sample Multiplier: 1

Instrument :  
 MSVOA\_Y  
 ClientSampleId :  
 TOTAL-VOC-TP6-07-5N-4

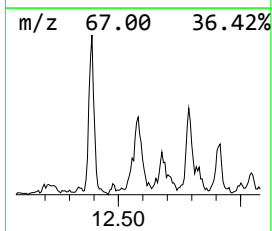
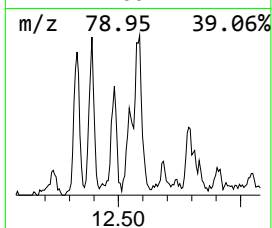
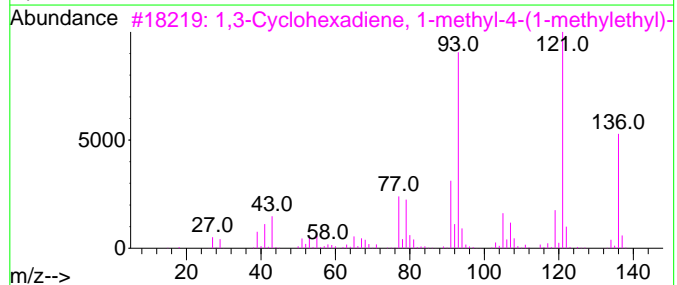
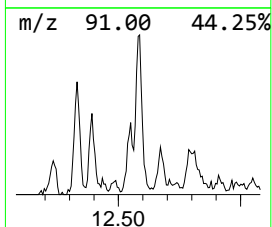
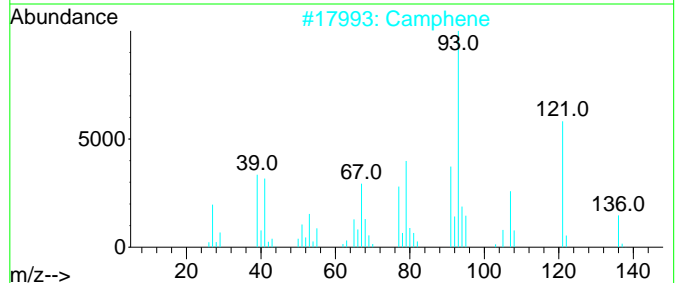
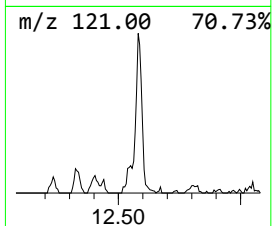
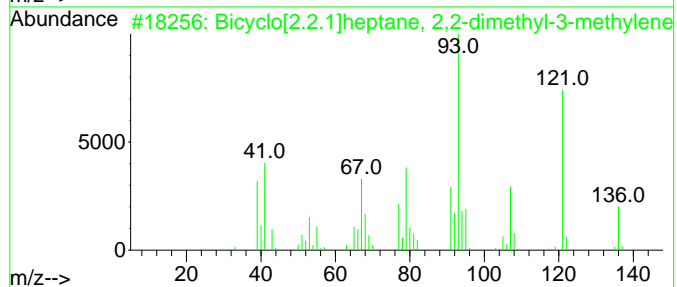
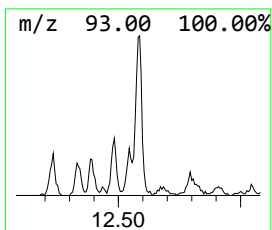
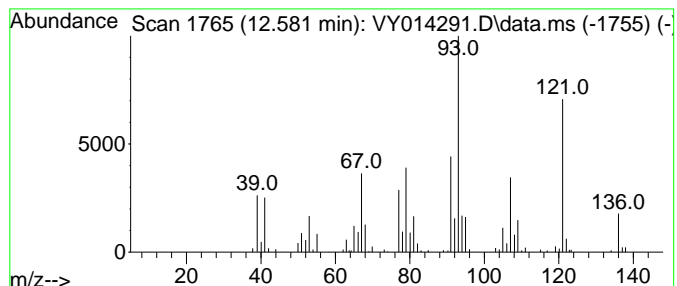
Quant Method : Z:\voasrv\HPCHEM1\MSVOA\_Y\methods\82Y060923S.M  
 Quant Title : SW846 8260

TIC Library : C:\Database\NIST20.L  
 TIC Integration Parameters: LSCINT.P

\*\*\*\*\*  
 Peak Number 2 Bicyclo[2.2.1]heptane, 2,2-... Concentration Rank 1

R.T.	EstConc	Area	Relative to ISTD	R.T.
12.581	14.40 ug/l	164492	1,4-Dichlorobenzene-d4	13.422

Hit#	of 5	Tentative ID	MW	MolForm	CAS#	Qual
1		Bicyclo[2.2.1]heptane, 2,2-dimet...	136	C10H16	005794-04-7	97
2		Camphene	136	C10H16	000079-92-5	97
3		1,3-Cyclohexadiene, 1-methyl-4-(...	136	C10H16	000099-86-5	81
4		Cyclohexene, 1-methyl-4-(1-methy...	136	C10H16	000586-62-9	74
5		Cyclohexene, 1-methyl-3-(1-methy...	136	C10H16	000499-03-6	72



Data Path : Z:\voasrv\HPCHEM1\MSVOA\_Y\Data\VY062023\  
 Data File : VY014291.D  
 Acq On : 20 Jun 2023 18:17  
 Operator : KP/MD  
 Sample : 03298-13  
 Misc : 8.80g/5.0mL/MSVOA\_Y/SOIL  
 ALS Vial : 20 Sample Multiplier: 1

Instrument :  
 MSVOA\_Y  
 ClientSampleId :  
 TOTAL-VOC-TP6-07-5N-4

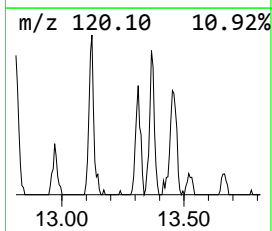
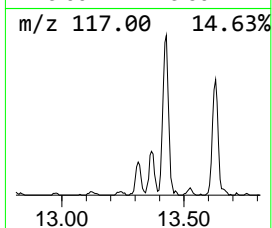
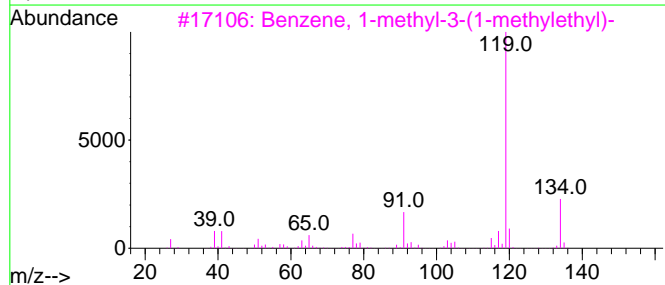
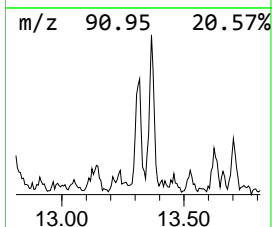
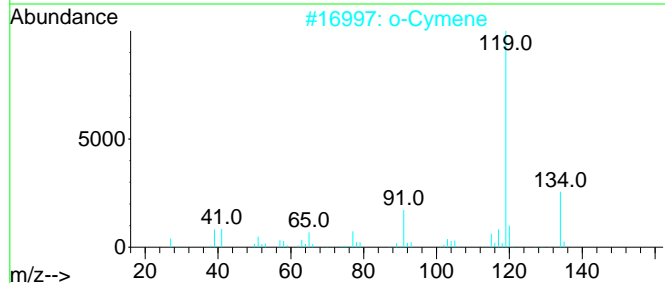
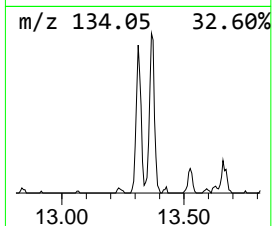
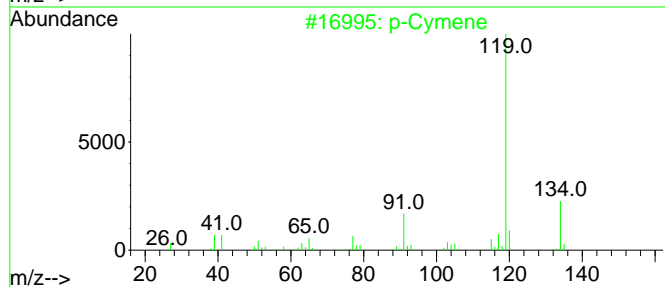
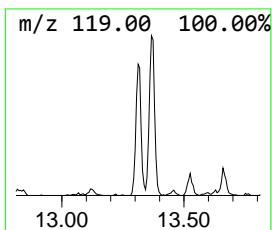
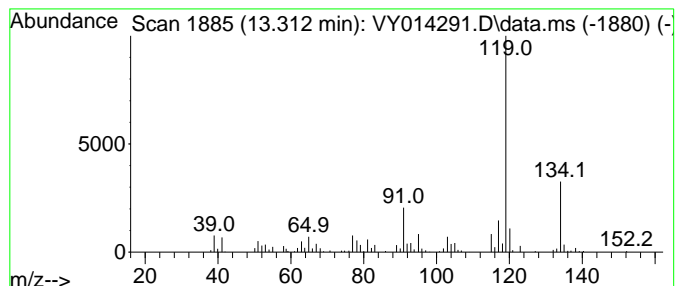
Quant Method : Z:\voasrv\HPCHEM1\MSVOA\_Y\methods\82Y060923S.M  
 Quant Title : SW846 8260

TIC Library : C:\Database\NIST20.L  
 TIC Integration Parameters: LSCINT.P

\*\*\*\*\*  
 Peak Number 3 p-Cymene Concentration Rank 3

R.T.	EstConc	Area	Relative to ISTD	R.T.
13.312	6.46 ug/l	73727	1,4-Dichlorobenzene-d4	13.422

Hit#	of	5	Tentative ID	MW	MolForm	CAS#	Qual
1			p-Cymene	134	C10H14	000099-87-6	97
2			o-Cymene	134	C10H14	000527-84-4	97
3			Benzene, 1-methyl-3-(1-methyleth...	134	C10H14	000535-77-3	95
4			Benzene, 1,2,4,5-tetramethyl-	134	C10H14	000095-93-2	91
5			Benzene, 1-ethyl-2,4-dimethyl-	134	C10H14	000874-41-9	90



Data Path : Z:\voasrv\HPCHEM1\MSVOA\_Y\Data\VY062023\  
Data File : VY014291.D  
Acq On : 20 Jun 2023 18:17  
Operator : KP/MD  
Sample : 03298-13  
Misc : 8.80g/5.0mL/MSVOA\_Y/SOIL  
ALS Vial : 20 Sample Multiplier: 1

Instrument :  
MSVOA\_Y  
ClientSampleId :  
TOTAL-VOC-TP6-07-5N-4

Quant Method : Z:\voasrv\HPCHEM1\MSVOA\_Y\methods\82Y060923S.M  
Quant Title : SW846 8260

TIC Library : C:\Database\NIST20.L  
TIC Integration Parameters: LSCINT.P

TIC Top Hit name	RT	EstConc	Units	Response	--Internal Standard--			
					#	RT	Resp	Conc
Cyclohexene,1-(...	12.392	7.4	ug/l	107285	3	11.489	726094	50.0
Bicyclo[2.2.1]h...	12.581	14.4	ug/l	164492	4	13.422	571083	50.0
p-Cymene	13.312	6.5	ug/l	73727	4	13.422	571083	50.0