

Data Path : Z:\voasrv\HPCHEM1\MSVOA_Y\Data\VY062023\
 Data File : VY014315.D
 Acq On : 21 Jun 2023 04:47
 Operator : KP/MD
 Sample : 03328-23
 Misc : 7.85g/5.0mL/MSVOA_Y/SOIL
 ALS Vial : 47 Sample Multiplier: 1

Instrument :
 MSVOA_Y
 ClientSampleId :
 TOTAL-VOC-SW04-8-15-GRAB-6

Integration Parameters: RTEINT.P
 Integrator: RTE
 Smoothing : ON Filtering: 5
 Sampling : 1 Min Area: 3 % of largest Peak
 Start Thrs: 0.2 Max Peaks: 100
 Stop Thrs : 0 Peak Location: TOP

If leading or trailing edge < 100 prefer < Baseline drop else tangent >
 Peak separation: 5

Method : Z:\voasrv\HPCHEM1\MSVOA_Y\methods\82Y060923S.M
 Title : SW846 8260

Signal : TIC: VY014315.D\data.ms

peak #	R.T. min	first scan	max scan	last scan	PK TY	peak height	corr. area	corr. % max.	% of total
1	3.265	228	237	247	rVB6	3478	9688	1.04%	0.190%
2	3.406	251	260	276	rBV	10736	37999	4.06%	0.746%
3	3.967	344	352	359	rBV2	3412	10428	1.11%	0.205%
4	4.735	467	478	492	rBV	14577	45278	4.84%	0.888%
5	5.765	638	647	659	rBV7	3702	11642	1.24%	0.228%
6	7.368	903	910	919	rBV3	4735	13336	1.43%	0.262%
7	7.728	957	969	975	rBV	140685	339618	36.30%	6.664%
8	7.801	975	981	996	rVB	232913	534149	57.10%	10.481%
9	8.155	1030	1039	1049	rBV	149755	330005	35.28%	6.475%
10	8.704	1118	1129	1139	rBV	343854	691327	73.90%	13.565%
11	10.191	1364	1373	1382	rBV	532581	935466	100.00%	18.356%
12	11.496	1580	1587	1598	rBV	509459	822291	87.90%	16.135%
13	12.489	1743	1750	1761	rBV	380233	594071	63.51%	11.657%
14	13.434	1896	1905	1911	rBV	430795	681705	72.87%	13.376%
15	13.965	1987	1992	2001	rVB	12276	20347	2.18%	0.399%
16	15.391	2219	2226	2234	rBV2	10206	18984	2.03%	0.373%

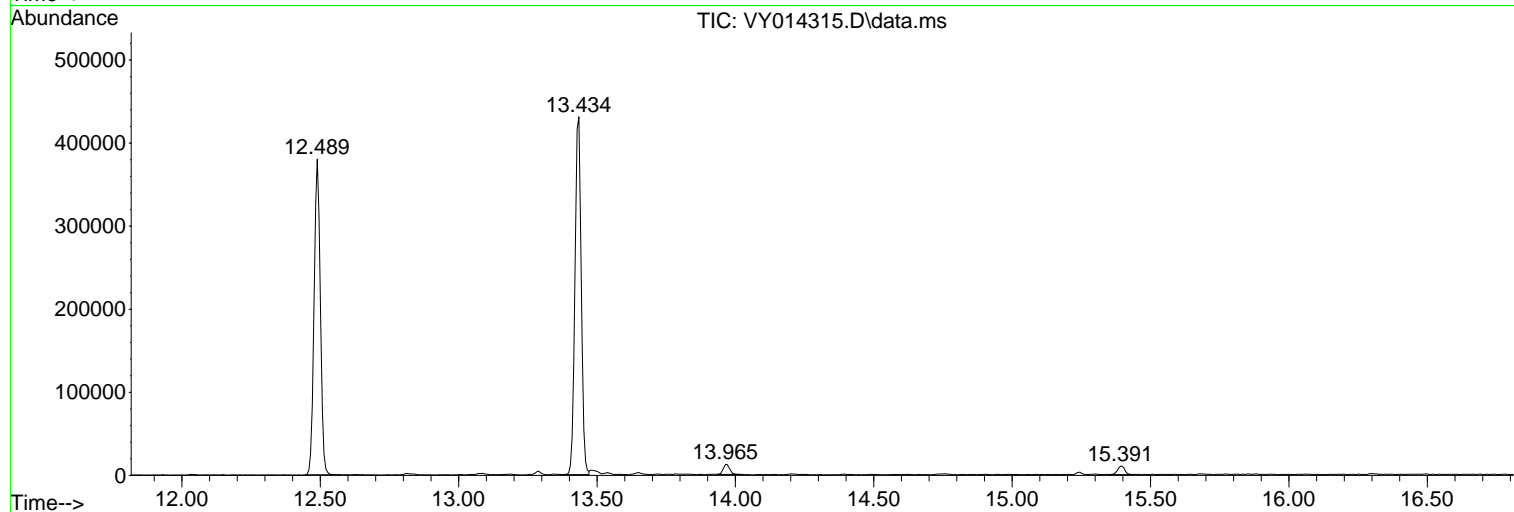
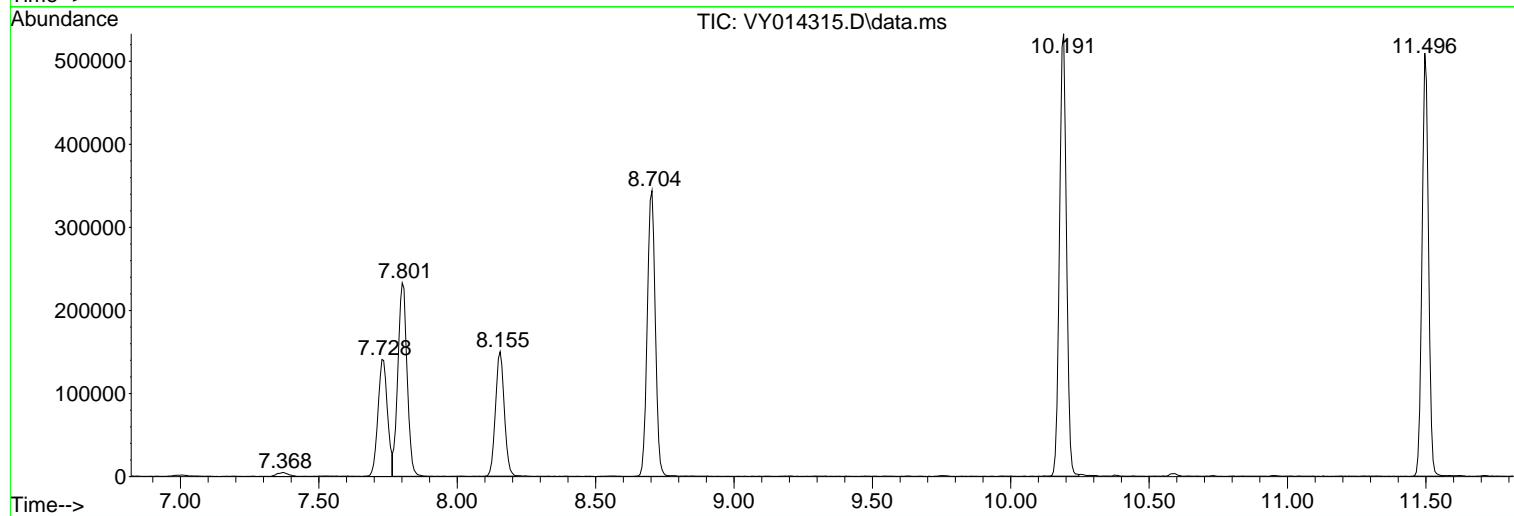
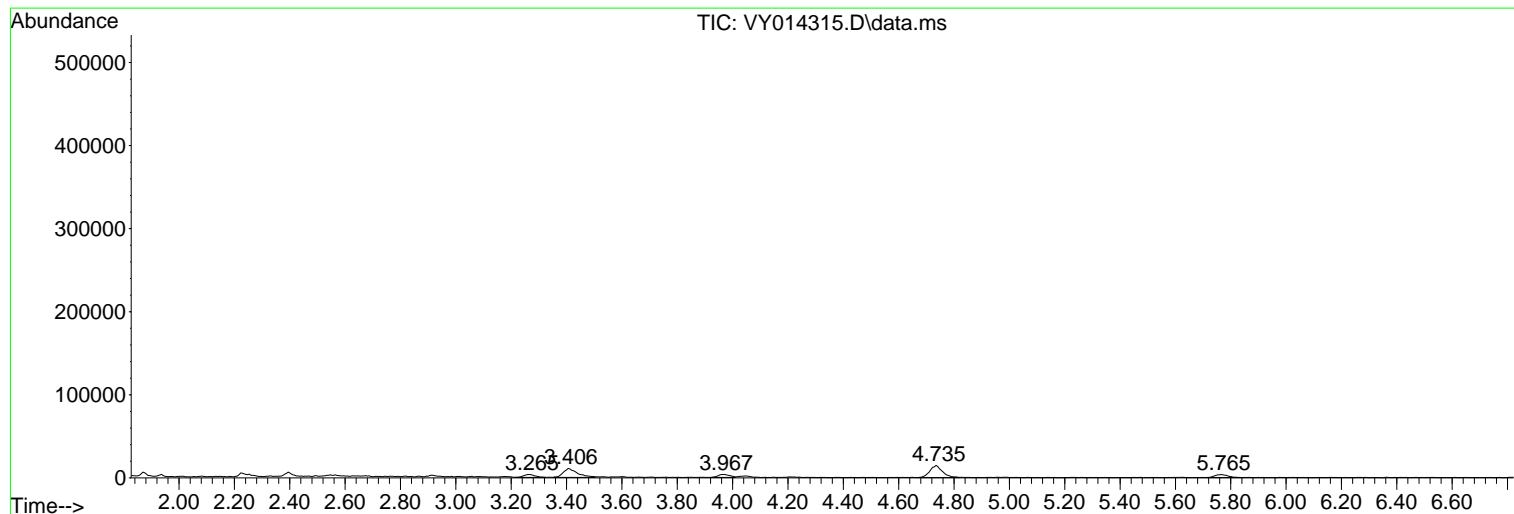
Sum of corrected areas: 5096334

Data Path : Z:\voasrv\HPCHEM1\MSVOA_Y\Data\VY062023\
Data File : VY014315.D
Acq On : 21 Jun 2023 04:47
Operator : KP/MD
Sample : 03328-23
Misc : 7.85g/5.0mL/MSVOA_Y/SOIL
ALS Vial : 47 Sample Multiplier: 1

Instrument :
MSVOA_Y
ClientSampleId :
TOTAL-VOC-SW04-8-15-GRAB-6

Quant Method : Z:\voasrv\HPCHEM1\MSVOA_Y\methods\82Y060923S.M
Quant Title : SW846 8260

TIC Library : C:\Database\NIST20.L
TIC Integration Parameters: LSCINT.P



Library Search Compound Report

Data Path : Z:\voasrv\HPCHEM1\MSVOA_Y\Data\VY062023\
Data File : VY014315.D
Acq On : 21 Jun 2023 04:47
Operator : KP/MD
Sample : 03328-23
Misc : 7.85g/5.0mL/MSVOA_Y/SOIL
ALS Vial : 47 Sample Multiplier: 1

Instrument :
MSVOA_Y
ClientSampleId :
TOTAL-VOC-SW04-8-15-GRAB-6

Quant Method : Z:\voasrv\HPCHEM1\MSVOA_Y\methods\82Y060923S.M
Quant Title : SW846 8260

TIC Library : C:\Database\NIST20.L
TIC Integration Parameters: LSCINT.P

No Library Search Compounds Detected

Data Path : Z:\voasrv\HPCHEM1\MSVOA_Y\Data\VY062023\
Data File : VY014315.D
Acq On : 21 Jun 2023 04:47
Operator : KP/MD
Sample : 03328-23
Misc : 7.85g/5.0mL/MSVOA_Y/SOIL
ALS Vial : 47 Sample Multiplier: 1

Instrument :
MSVOA_Y
ClientSampleId :
TOTAL-VOC-SW04-8-15-GRAB-6

Quant Method : Z:\voasrv\HPCHEM1\MSVOA_Y\methods\82Y060923S.M
Quant Title : SW846 8260

TIC Library : C:\Database\NIST0.L
TIC Integration Parameters: LSCINT.P

TIC Top Hit name	RT	EstConc	Units	Response	--Internal Standard--		
					#	RT	Resp Conc
