

Data Path : Z:\voasrv\HPCHEM1\MSVOA\_Y\Data\VY062722\  
 Data File : VY009353.D  
 Acq On : 27 Jun 2022 19:10  
 Operator : KP/MD  
 Sample : N3201-02  
 Misc : 7.14g/5.0mL/MSVOA\_Y/SOIL  
 ALS Vial : 17 Sample Multiplier: 1

Instrument :  
 MSVOA\_Y  
 ClientSampleId :  
 B2208-35

Quant Time: Jun 28 04:32:12 2022  
 Quant Method : Z:\voasrv\HPCHEM1\MSVOA\_Y\methods\82Y062422S.M  
 Quant Title : SW846 8260  
 QLast Update : Sat Jun 25 07:08:46 2022  
 Response via : Initial Calibration

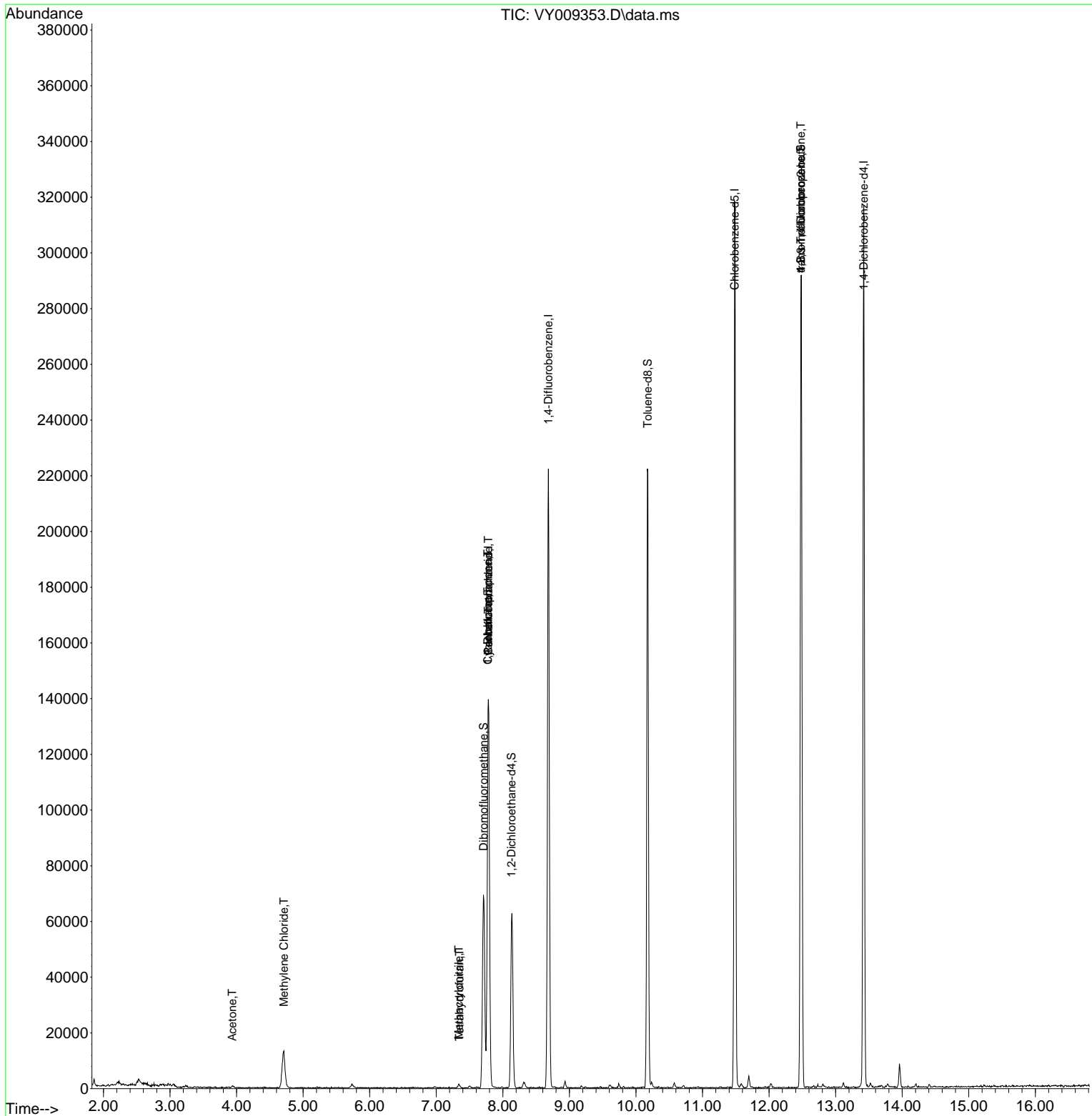
| Compound                      | R.T.   | QIon  | Response | Conc      | Units  | Dev(Min) |
|-------------------------------|--------|-------|----------|-----------|--------|----------|
| -----                         |        |       |          |           |        |          |
| Internal Standards            |        |       |          |           |        |          |
| 1) Pentafluorobenzene         | 7.783  | 168   | 110937   | 50.000    | ug/l   | 0.00     |
| 34) 1,4-Difluorobenzene       | 8.685  | 114   | 183153   | 50.000    | ug/l   | 0.00     |
| 63) Chlorobenzene-d5          | 11.483 | 117   | 168868   | 50.000    | ug/l   | 0.00     |
| 72) 1,4-Dichlorobenzene-d4    | 13.422 | 152   | 77708    | 50.000    | ug/l   | 0.00     |
| System Monitoring Compounds   |        |       |          |           |        |          |
| 33) 1,2-Dichloroethane-d4     | 8.130  | 65    | 48381    | 58.705    | ug/l   | 0.00     |
| Spiked Amount                 | 50.000 | Range | 50 - 163 | Recovery  | =      | 117.400% |
| 35) Dibromofluoromethane      | 7.710  | 113   | 49071    | 49.638    | ug/l   | 0.00     |
| Spiked Amount                 | 50.000 | Range | 54 - 147 | Recovery  | =      | 99.280%  |
| 50) Toluene-d8                | 10.179 | 98    | 144219   | 49.919    | ug/l   | 0.00     |
| Spiked Amount                 | 50.000 | Range | 49 - 140 | Recovery  | =      | 99.840%  |
| 62) 4-Bromofluorobenzene      | 12.477 | 95    | 65961    | 46.849    | ug/l   | 0.00     |
| Spiked Amount                 | 50.000 | Range | 25 - 144 | Recovery  | =      | 93.700%  |
| Target Compounds              |        |       |          |           |        |          |
|                               |        |       |          |           | Qvalue |          |
| 11) Tert butyl alcohol        | 4.972  | 59    | 42       | Below Cal | #      | 78       |
| 16) Acetone                   | 3.936  | 43    | 989      | 3.487     | ug/l # | 55       |
| 20) Methylene Chloride        | 4.710  | 84    | 9435     | 4.632     | ug/l   | 95       |
| 29) Tetrahydrofuran           | 7.350  | 42    | 727      | 2.656     | ug/l   | 95       |
| 31) Cyclohexane               | 7.777  | 56    | 2502     | 1.247     | ug/l # | 16       |
| 36) 1,1-Dichloropropene       | 7.777  | 75    | 8454     | 5.096     | ug/l # | 49       |
| 38) Carbon Tetrachloride      | 7.783  | 117   | 10863    | 6.367     | ug/l # | 16       |
| 41) Methacrylonitrile         | 7.338  | 41    | 548      | 1.080     | ug/l # | 100      |
| 76) 1,2,3-Trichloropropane    | 12.477 | 75    | 35478    | 47.047    | ug/l # | 100      |
| 81) trans-1,4-Dichloro-2-b... | 12.477 | 75    | 35478    | 93.132    | ug/l # | 14       |
| -----                         |        |       |          |           |        |          |

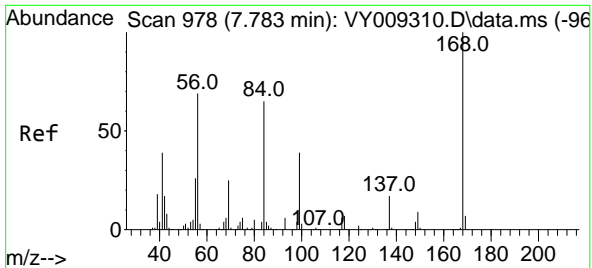
(#) = qualifier out of range (m) = manual integration (+) = signals summed

Data Path : Z:\voasrv\HPCHEM1\MSVOA\_Y\Data\VY062722\  
 Data File : VY009353.D  
 Acq On : 27 Jun 2022 19:10  
 Operator : KP/MD  
 Sample : N3201-02  
 Misc : 7.14g/5.0mL/MSVOA\_Y/SOIL  
 ALS Vial : 17 Sample Multiplier: 1

Instrument :  
 MSVOA\_Y  
 ClientSampleId :  
 B2208-35

Quant Time: Jun 28 04:32:12 2022  
 Quant Method : Z:\voasrv\HPCHEM1\MSVOA\_Y\methods\82Y062422S.M  
 Quant Title : SW846 8260  
 QLast Update : Sat Jun 25 07:08:46 2022  
 Response via : Initial Calibration

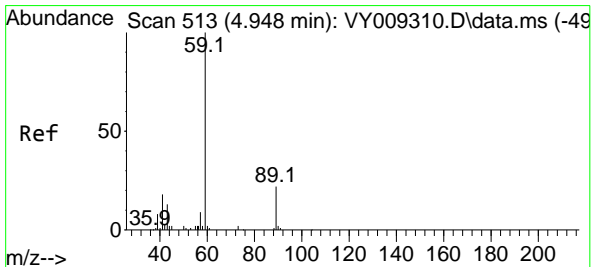
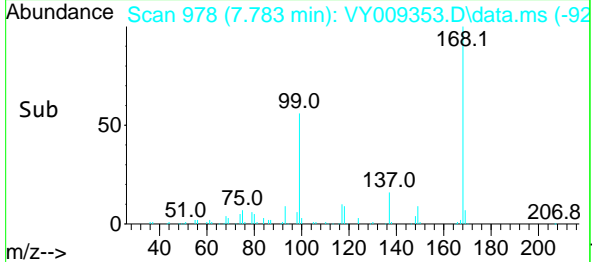
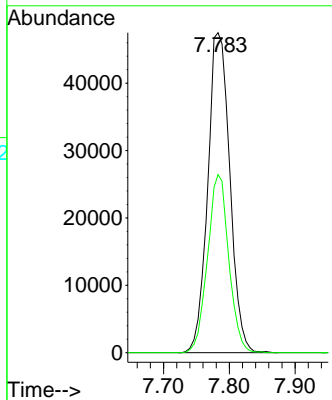
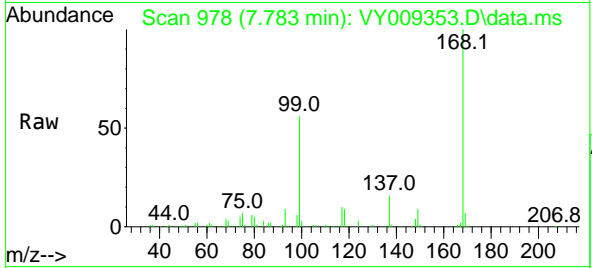




#1  
 Pentafluorobenzene  
 Concen: 50.000 ug/l  
 RT: 7.783 min Scan# 91  
 Delta R.T. -0.000 min  
 Lab File: VY009353.D  
 Acq: 27 Jun 2022 19:10

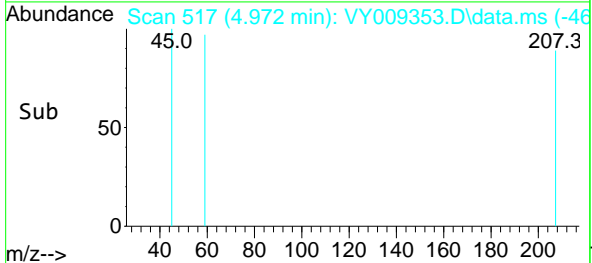
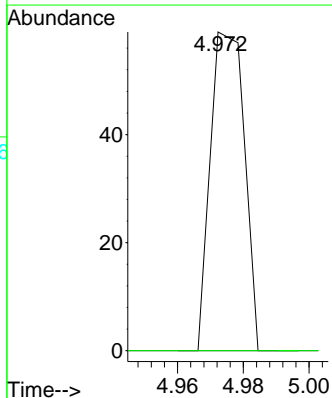
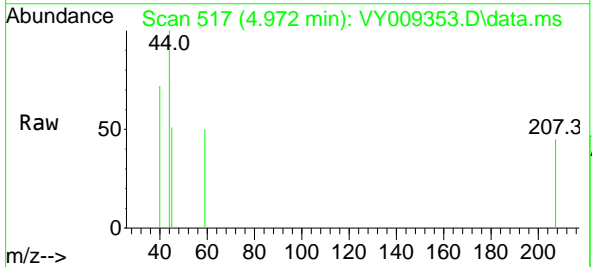
Instrument :  
 MSVOA\_Y  
 ClientSampleId :  
 B2208-35

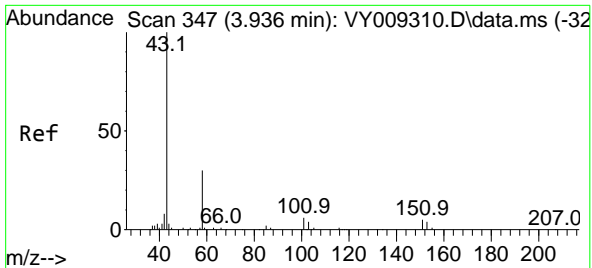
Tgt Ion:168 Resp: 110937  
 Ion Ratio Lower Upper  
 168 100  
 99 55.6 42.1 63.1



#11  
 Tert butyl alcohol  
 Concen: Below Cal  
 RT: 4.972 min Scan# 517  
 Delta R.T. 0.024 min  
 Lab File: VY009353.D  
 Acq: 27 Jun 2022 19:10

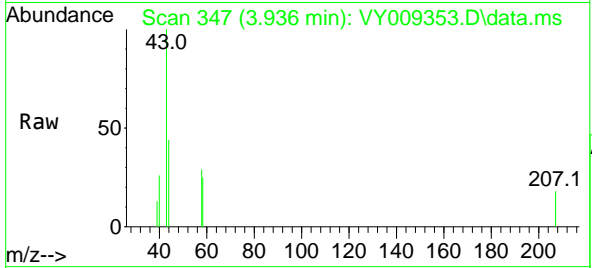
Tgt Ion: 59 Resp: 42  
 Ion Ratio Lower Upper  
 59 100  
 57 0.0 6.3 9.5#



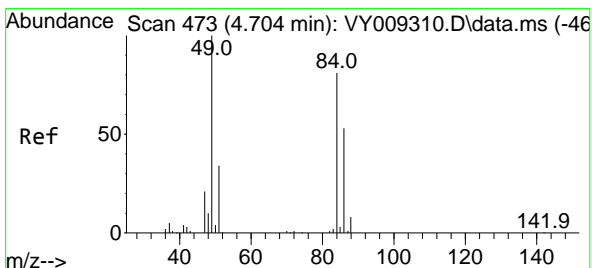
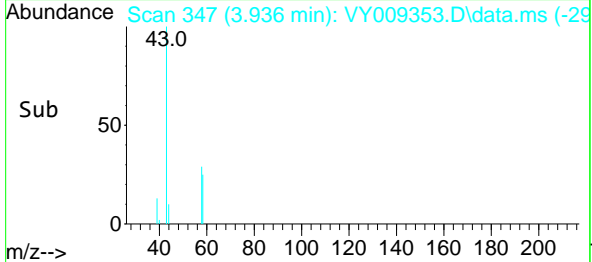
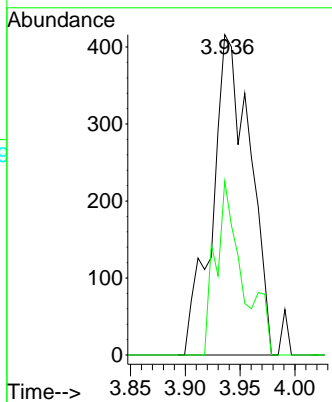


#16  
 Acetone  
 Concen: 3.487 ug/l  
 RT: 3.936 min Scan# 34  
 Delta R.T. 0.000 min  
 Lab File: VY009353.D  
 Acq: 27 Jun 2022 19:10

Instrument :  
 MSVOA\_Y  
 ClientSampleId :  
 B2208-35

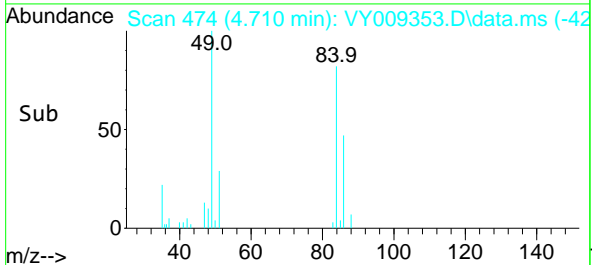
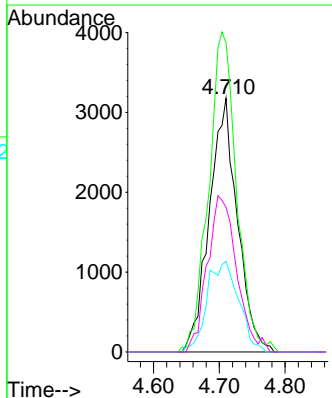
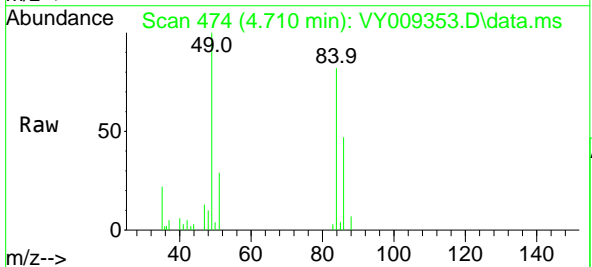


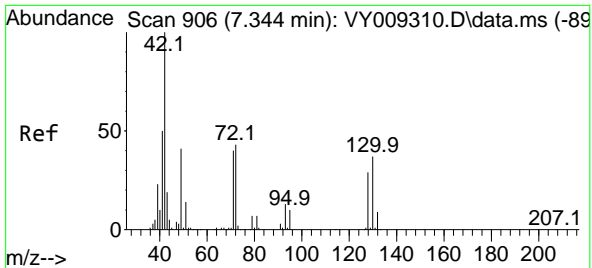
Tgt Ion: 43 Resp: 989  
 Ion Ratio Lower Upper  
 43 100  
 58 54.3 24.0 36.0#



#20  
 Methylene Chloride  
 Concen: 4.632 ug/l  
 RT: 4.710 min Scan# 474  
 Delta R.T. 0.006 min  
 Lab File: VY009353.D  
 Acq: 27 Jun 2022 19:10

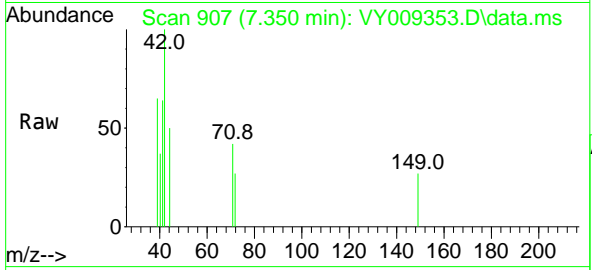
Tgt Ion: 84 Resp: 9435  
 Ion Ratio Lower Upper  
 84 100  
 49 121.9 98.2 147.4  
 51 35.8 33.4 50.0  
 86 57.0 52.3 78.5





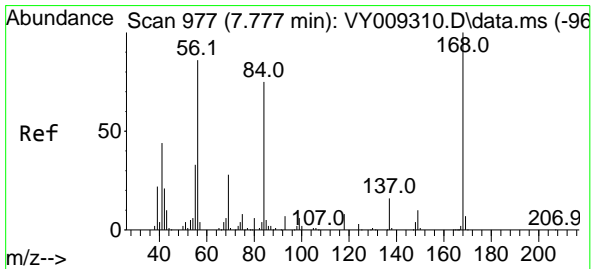
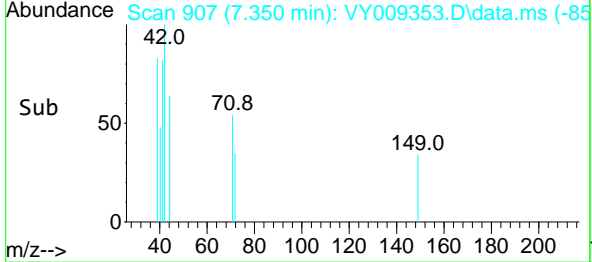
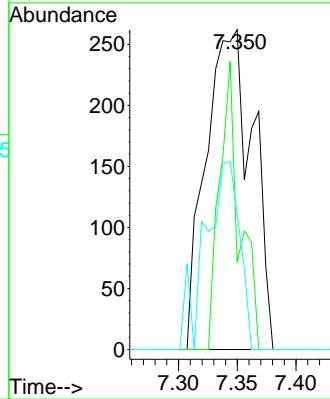
#29  
 Tetrahydrofuran  
 Concen: 2.656 ug/l  
 RT: 7.350 min Scan# 906  
 Delta R.T. 0.006 min  
 Lab File: VY009353.D  
 Acq: 27 Jun 2022 19:10

Instrument : MSVOA\_Y  
 ClientSampleId : B2208-35

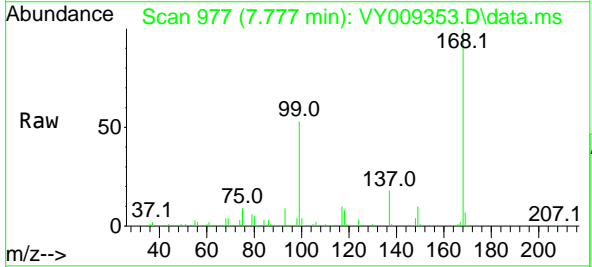


Tgt Ion: 42 Resp: 727

| Ion | Ratio | Lower | Upper |
|-----|-------|-------|-------|
| 42  | 100   |       |       |
| 72  | 38.7  | 34.6  | 52.0  |
| 71  | 43.1  | 32.7  | 49.1  |

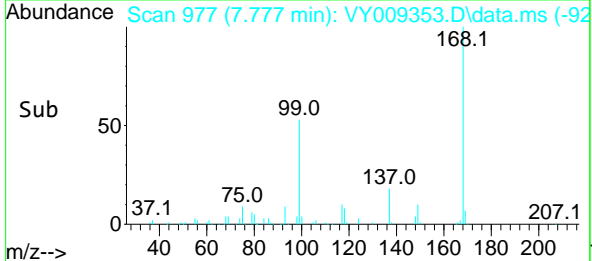
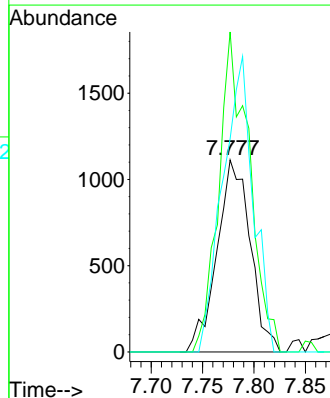


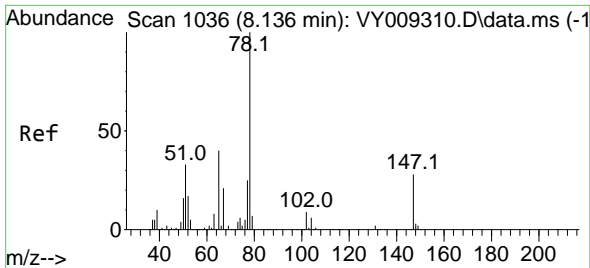
#31  
 Cyclohexane  
 Concen: 1.247 ug/l  
 RT: 7.777 min Scan# 977  
 Delta R.T. 0.000 min  
 Lab File: VY009353.D  
 Acq: 27 Jun 2022 19:10



Tgt Ion: 56 Resp: 2502

| Ion | Ratio | Lower | Upper  |
|-----|-------|-------|--------|
| 56  | 100   |       |        |
| 69  | 166.7 | 26.0  | 39.0#  |
| 84  | 111.0 | 69.5  | 104.3# |

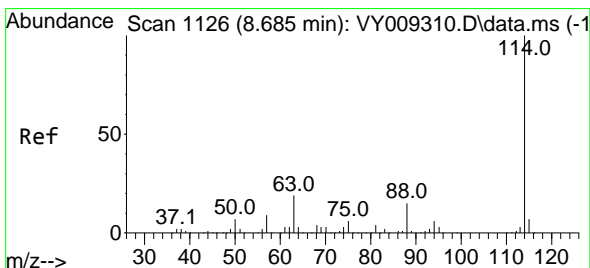
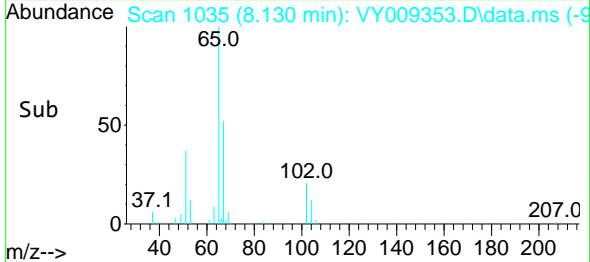
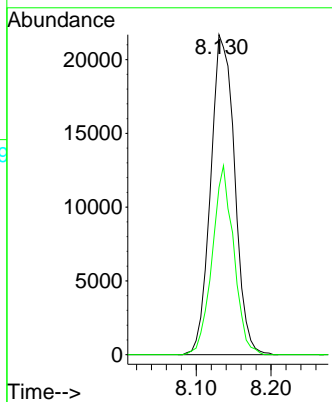
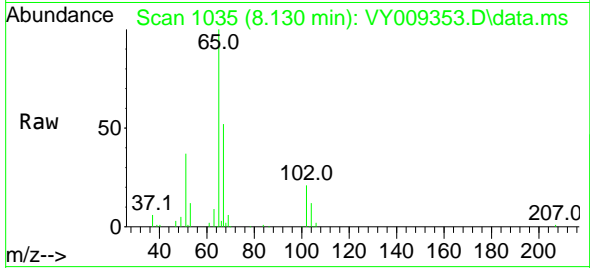




#33  
 1,2-Dichloroethane-d4  
 Concen: 58.705 ug/l  
 RT: 8.130 min Scan# 1036  
 Delta R.T. -0.006 min  
 Lab File: VY009353.D  
 Acq: 27 Jun 2022 19:10

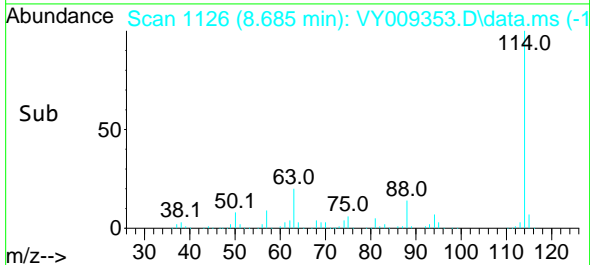
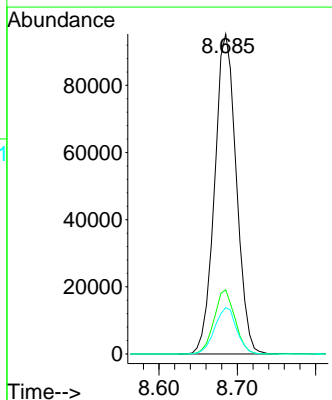
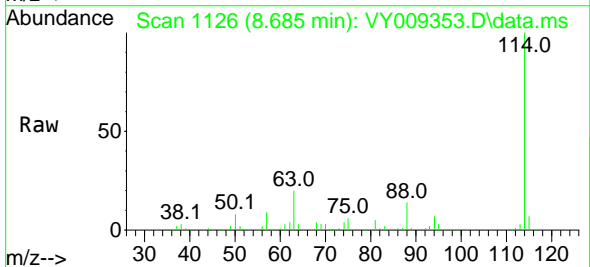
Instrument : MSVOA\_Y  
 ClientSampleId : B2208-35

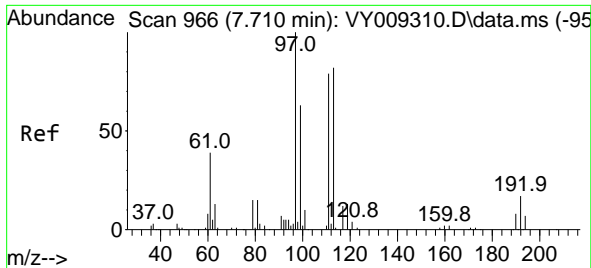
Tgt Ion: 65 Resp: 48381  
 Ion Ratio Lower Upper  
 65 100  
 67 53.1 0.0 108.4



#34  
 1,4-Difluorobenzene  
 Concen: 50.000 ug/l  
 RT: 8.685 min Scan# 1126  
 Delta R.T. 0.000 min  
 Lab File: VY009353.D  
 Acq: 27 Jun 2022 19:10

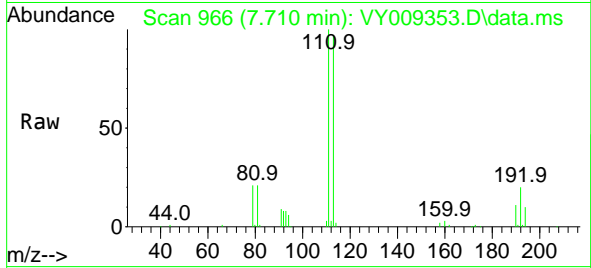
Tgt Ion:114 Resp: 183153  
 Ion Ratio Lower Upper  
 114 100  
 63 20.1 0.0 38.0  
 88 14.5 0.0 30.0



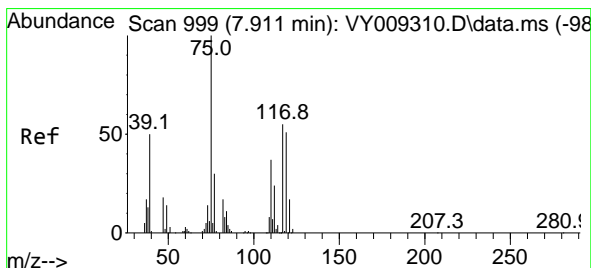
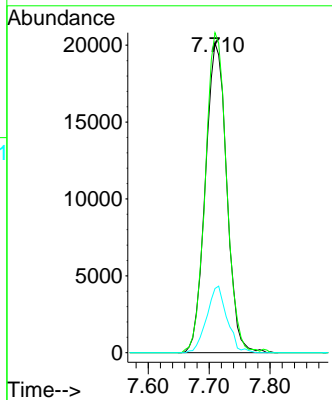
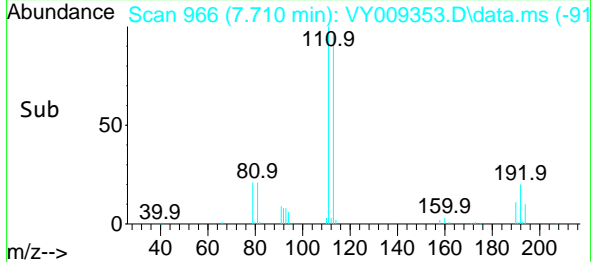


#35  
 Dibromofluoromethane  
 Concen: 49.638 ug/l  
 RT: 7.710 min Scan# 90  
 Delta R.T. 0.000 min  
 Lab File: VY009353.D  
 Acq: 27 Jun 2022 19:10

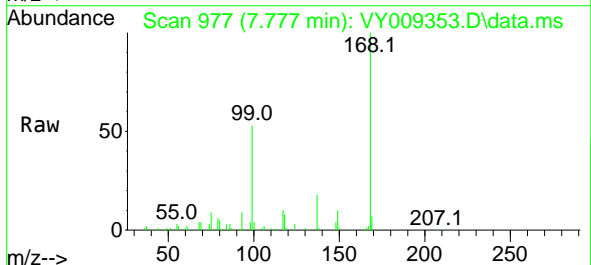
Instrument : MSVOA\_Y  
 ClientSampleId : B2208-35



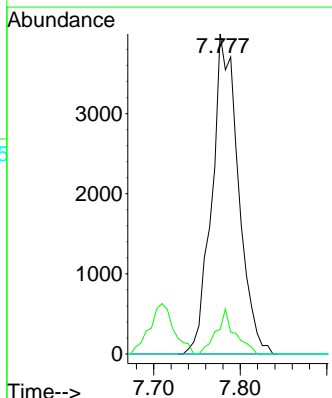
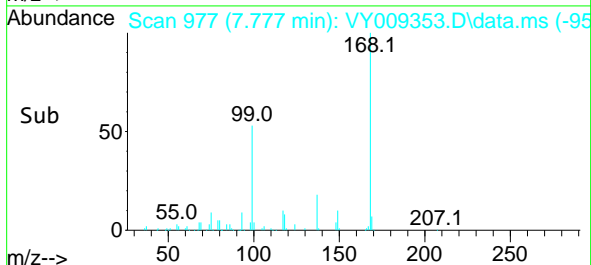
Tgt Ion: 113 Resp: 49071  
 Ion Ratio Lower Upper  
 113 100  
 111 102.5 80.6 120.8  
 192 20.5 16.2 24.4

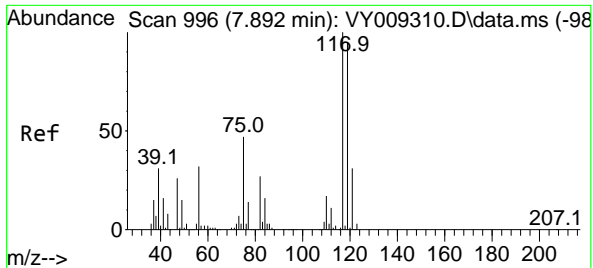


#36  
 1,1-Dichloropropene  
 Concen: 5.096 ug/l  
 RT: 7.777 min Scan# 977  
 Delta R.T. -0.134 min  
 Lab File: VY009353.D  
 Acq: 27 Jun 2022 19:10



Tgt Ion: 75 Resp: 8454  
 Ion Ratio Lower Upper  
 75 100  
 110 9.8 18.6 56.0#  
 77 0.0 25.0 37.4#



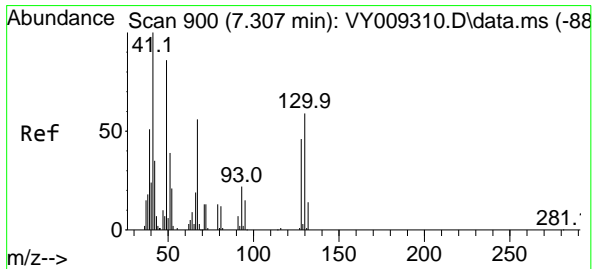
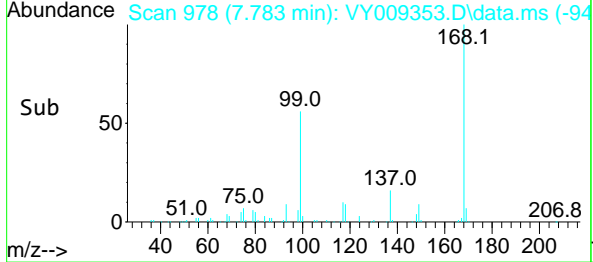
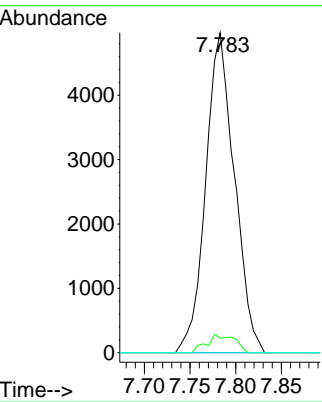
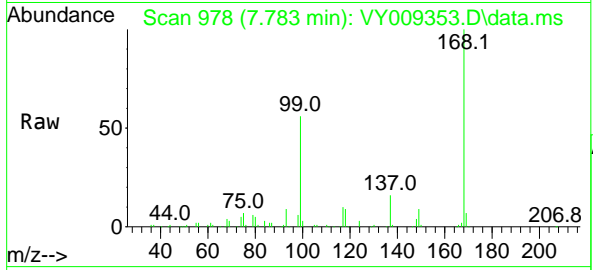


#38  
 Carbon Tetrachloride  
 Concen: 6.367 ug/l  
 RT: 7.783 min Scan# 911  
 Delta R.T. -0.110 min  
 Lab File: VY009353.D  
 Acq: 27 Jun 2022 19:10

Instrument : MSVOA\_Y  
 ClientSampleId : B2208-35

Tgt Ion:117 Resp: 10863

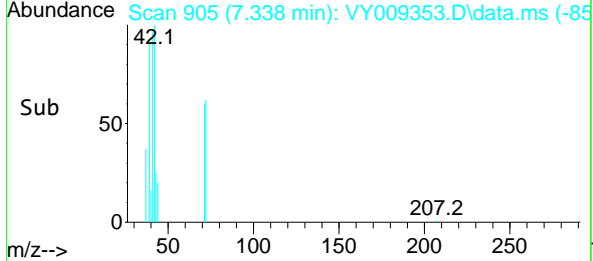
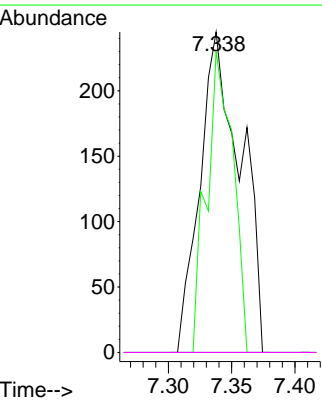
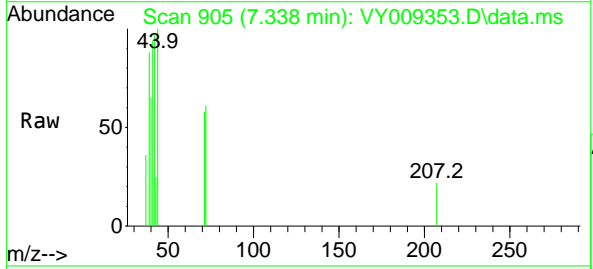
| Ion | Ratio | Lower | Upper  |
|-----|-------|-------|--------|
| 117 | 100   |       |        |
| 119 | 4.5   | 75.9  | 113.9# |
| 121 | 0.0   | 24.9  | 37.3#  |



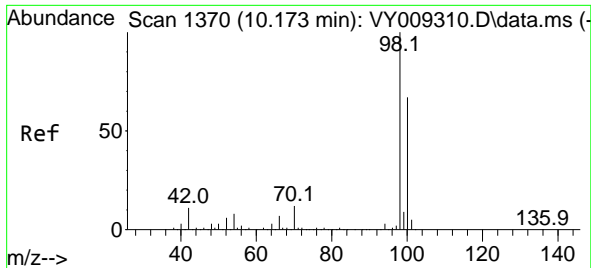
#41  
 Methacrylonitrile  
 Concen: 1.080 ug/l  
 RT: 7.338 min Scan# 905  
 Delta R.T. 0.031 min  
 Lab File: VY009353.D  
 Acq: 27 Jun 2022 19:10

Tgt Ion: 41 Resp: 548

| Ion | Ratio | Lower | Upper |
|-----|-------|-------|-------|
| 41  | 100   |       |       |
| 39  | 60.9  | 0.0   | 0.0#  |
| 67  | 0.0   | 0.0   | 0.0   |
| 52  | 0.0   | 0.0   | 0.0   |

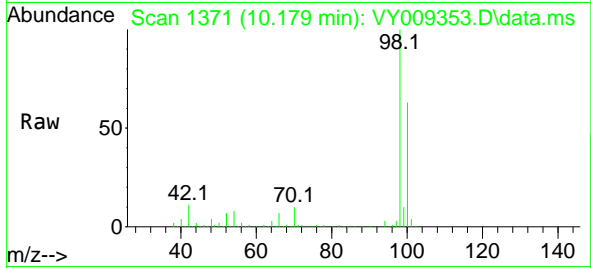




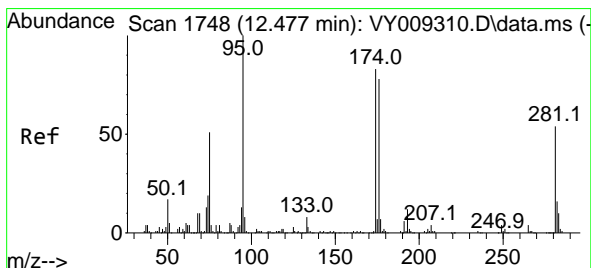
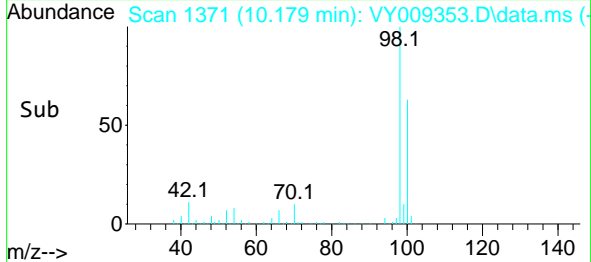
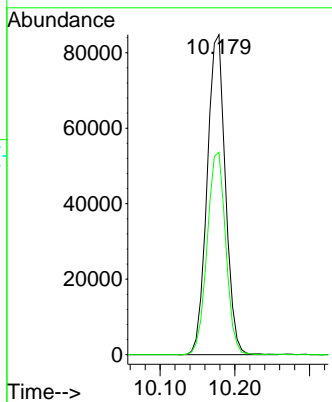


#50  
 Toluene-d8  
 Concen: 49.919 ug/l  
 RT: 10.179 min Scan# 11  
 Delta R.T. 0.006 min  
 Lab File: VY009353.D  
 Acq: 27 Jun 2022 19:10

Instrument :  
 MSVOA\_Y  
 ClientSampleId :  
 B2208-35

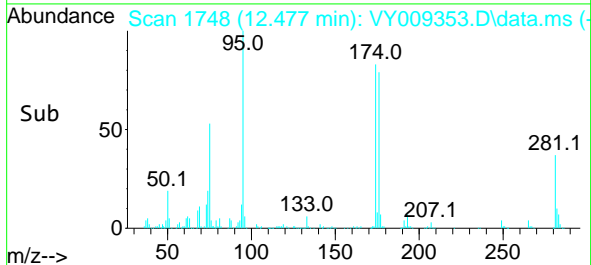
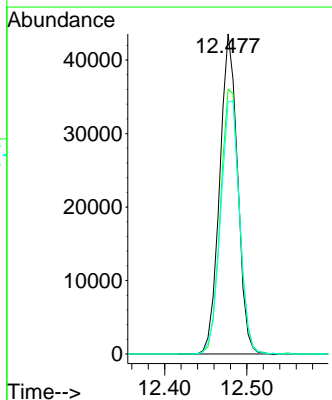
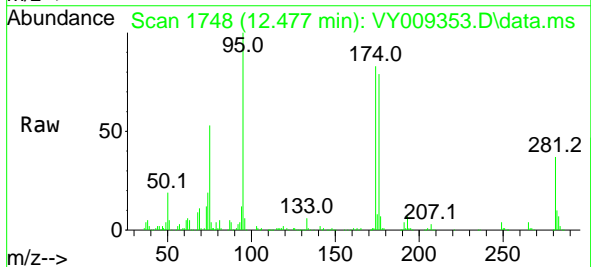


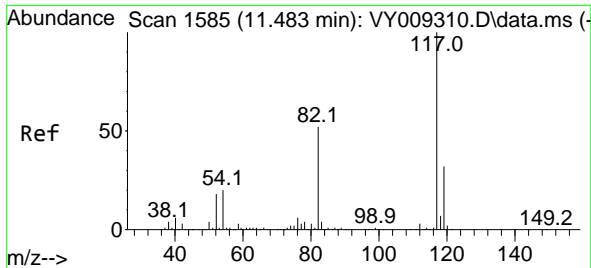
Tgt Ion: 98 Resp: 144219  
 Ion Ratio Lower Upper  
 98 100  
 100 64.3 52.9 79.3



#62  
 4-Bromofluorobenzene  
 Concen: 46.849 ug/l  
 RT: 12.477 min Scan# 1748  
 Delta R.T. 0.000 min  
 Lab File: VY009353.D  
 Acq: 27 Jun 2022 19:10

Tgt Ion: 95 Resp: 65961  
 Ion Ratio Lower Upper  
 95 100  
 174 86.9 0.0 173.8  
 176 84.2 0.0 167.0

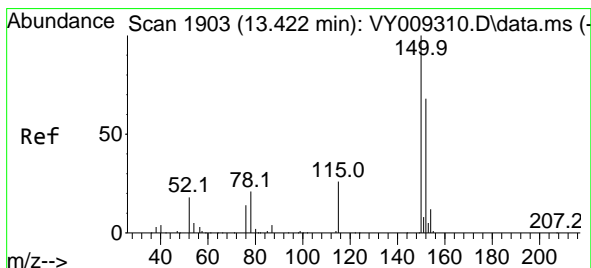
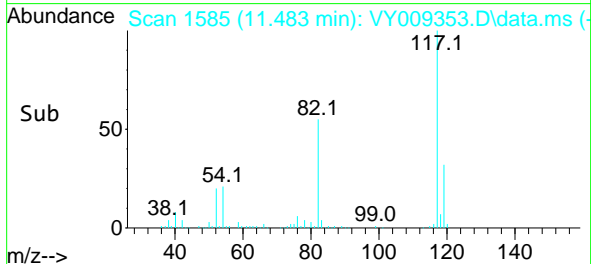
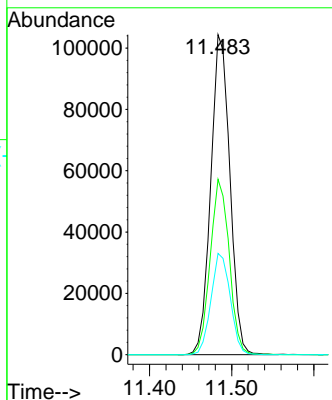
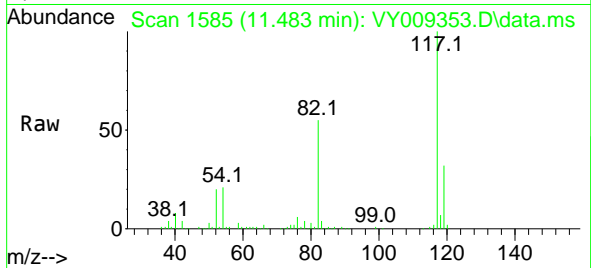




#63  
 Chlorobenzene-d5  
 Concen: 50.000 ug/l  
 RT: 11.483 min Scan# 117  
 Delta R.T. 0.000 min  
 Lab File: VY009353.D  
 Acq: 27 Jun 2022 19:10

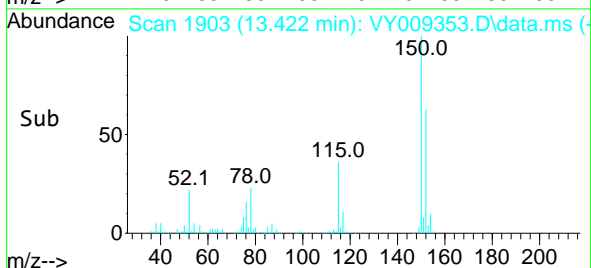
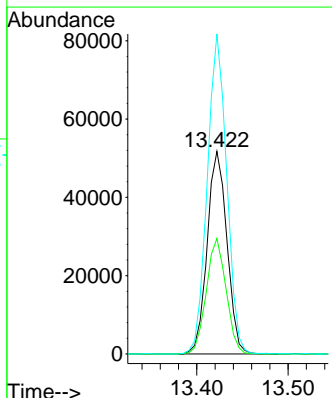
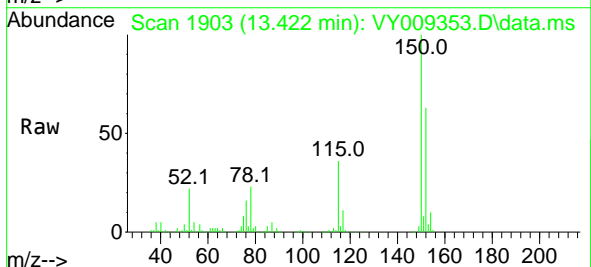
Instrument : MSVOA\_Y  
 ClientSampleId : B2208-35

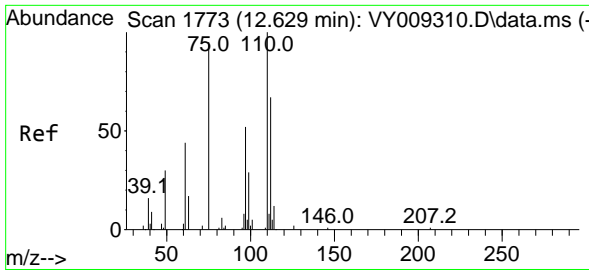
| Tgt Ion | Resp   | Lower | Upper |
|---------|--------|-------|-------|
| 117     | 168868 |       |       |
| 82      | 54.8   | 41.8  | 62.6  |
| 119     | 31.7   | 25.6  | 38.4  |



#72  
 1,4-Dichlorobenzene-d4  
 Concen: 50.000 ug/l  
 RT: 13.422 min Scan# 1903  
 Delta R.T. 0.000 min  
 Lab File: VY009353.D  
 Acq: 27 Jun 2022 19:10

| Tgt Ion | Resp  | Lower | Upper |
|---------|-------|-------|-------|
| 152     | 77708 |       |       |
| 115     | 57.0  | 28.6  | 85.9  |
| 150     | 155.3 | 0.0   | 349.8 |

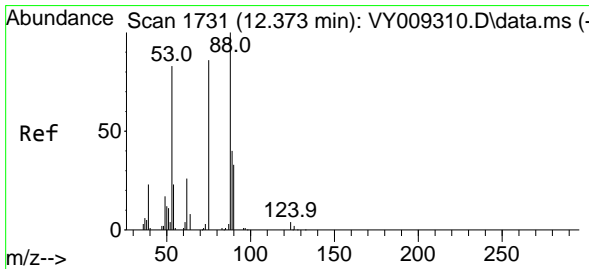
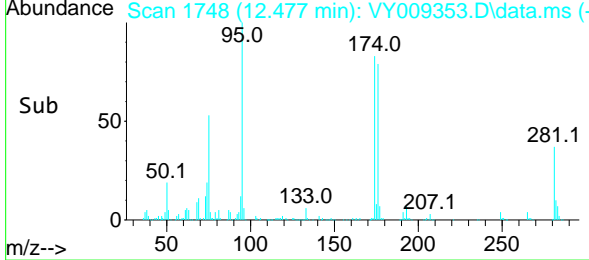
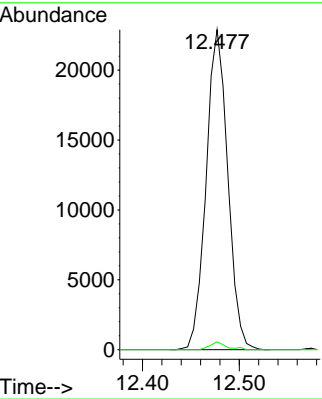
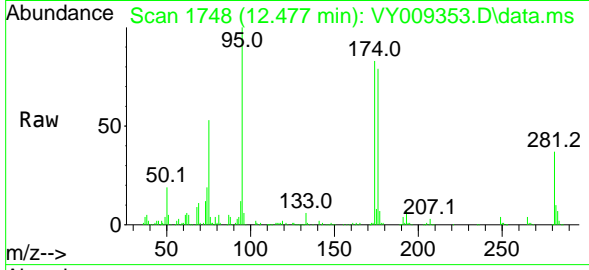




#76  
 1,2,3-Trichloropropane  
 Concen: 47.047 ug/l  
 RT: 12.477 min Scan# 1748  
 Delta R.T. -0.152 min  
 Lab File: VY009353.D  
 Acq: 27 Jun 2022 19:10

Instrument : MSVOA\_Y  
 ClientSampleId : B2208-35

Tgt Ion: 75 Resp: 35478  
 Ion Ratio Lower Upper  
 75 100  
 77 1.8 0.0 0.0#



#81  
 trans-1,4-Dichloro-2-butene  
 Concen: 93.132 ug/l  
 RT: 12.477 min Scan# 1748  
 Delta R.T. 0.104 min  
 Lab File: VY009353.D  
 Acq: 27 Jun 2022 19:10

Tgt Ion: 75 Resp: 35478  
 Ion Ratio Lower Upper  
 75 100  
 53 0.0 71.4 107.2#  
 89 0.9 38.1 57.1#

