

Data Path : Z:\VOASRV\HPCHEM1\MSVOA Y\DATA\VY062920\
 Data File : VY003014.D
 Acq On : 29 Jun 2020 18:18
 Operator : SY/MD
 Sample : L3148-02
 Misc : 7.24G/5ML/MSVOA Y/SOIL
 ALS Vial : 18 Sample Multiplier: 1

Instrument :
 MSVOA_Y
 ClientSampleId :
 EPEC-POLYMERS-02

Integration Parameters: RTEINT.P

Integrator: RTE
 Smoothing : ON Filtering: 5
 Sampling : 1 Min Area: 3 % of largest Peak
 Start Thrs: 0.2 Max Peaks: 100
 Stop Thrs : 0 Peak Location: TOP

If leading or trailing edge < 100 prefer < Baseline drop else tangent >
 Peak separation: 5

Method : Z:\VOASRV\HPCHEM1\MSVOA_Y\METHODS\82Y062920S.M
 Title : SW846 8260

Signal : TIC

peak #	R.T. min	first scan	max scan	last scan	PK TY	peak height	corr. area	corr. % max.	% of total
1	4.724	477	490	502	rBV2	100483	319191	1.02%	0.733%
2	7.724	971	982	988	rBV	273472	658774	2.10%	1.513%
3	7.797	988	994	1006	rVB	436939	994581	3.18%	2.284%
4	8.151	1042	1052	1061	rBV	268343	593312	1.89%	1.363%
5	8.693	1127	1141	1153	rVB	691683	1351952	4.32%	3.105%
6	10.181	1377	1385	1392	rBV	1076213	1852618	5.92%	4.255%
7	11.491	1592	1600	1612	rBV2	1043608	2157353	6.89%	4.955%
8	12.028	1681	1688	1695	rVB	593888	917301	2.93%	2.107%
9	12.479	1755	1762	1770	rBV	860349	1368606	4.37%	3.144%
10	12.760	1800	1808	1813	rBV	20175135	31315482	100.00%	71.930%
11	12.808	1813	1816	1820	rVB	232921	325544	1.04%	0.748%
12	13.424	1911	1917	1930	rVB	1087955	1681532	5.37%	3.862%

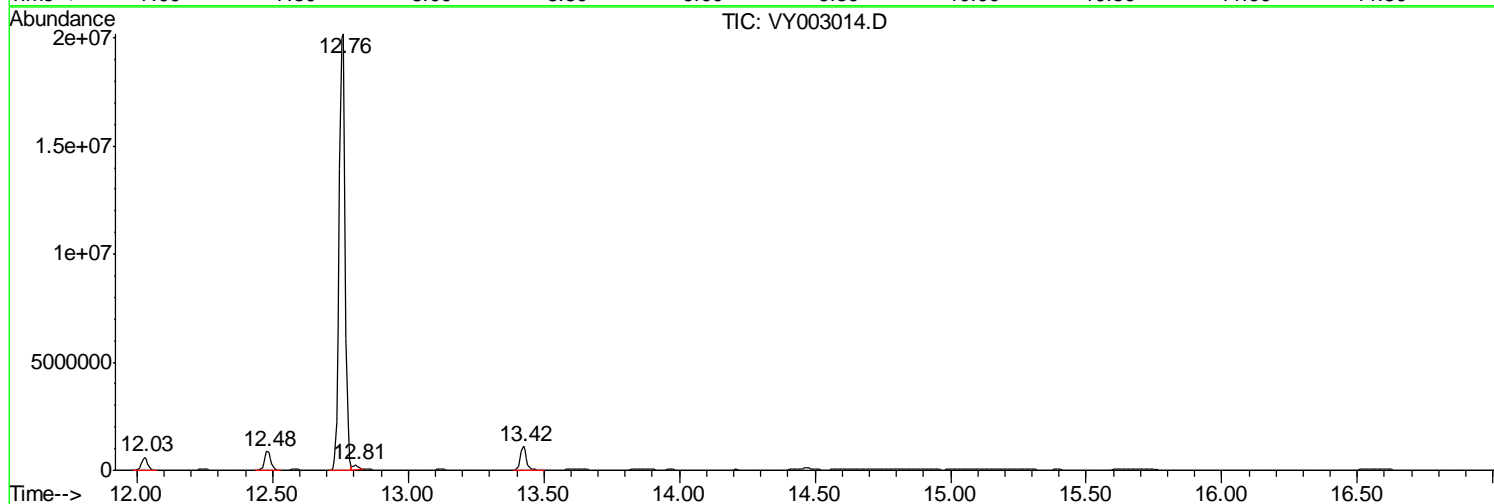
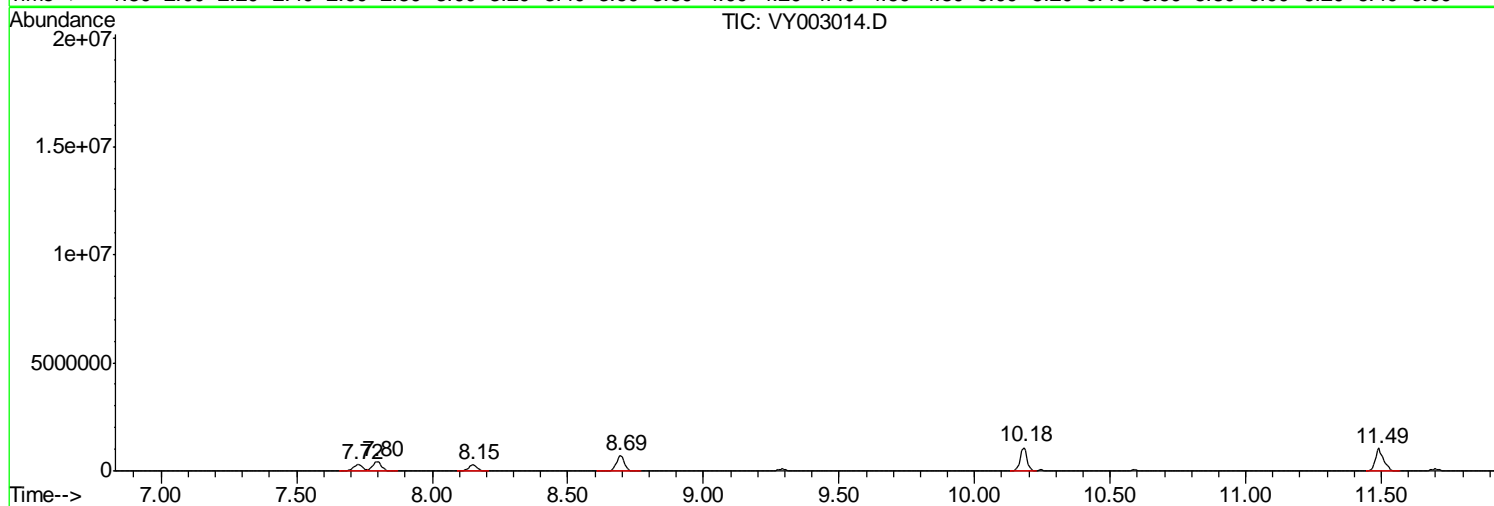
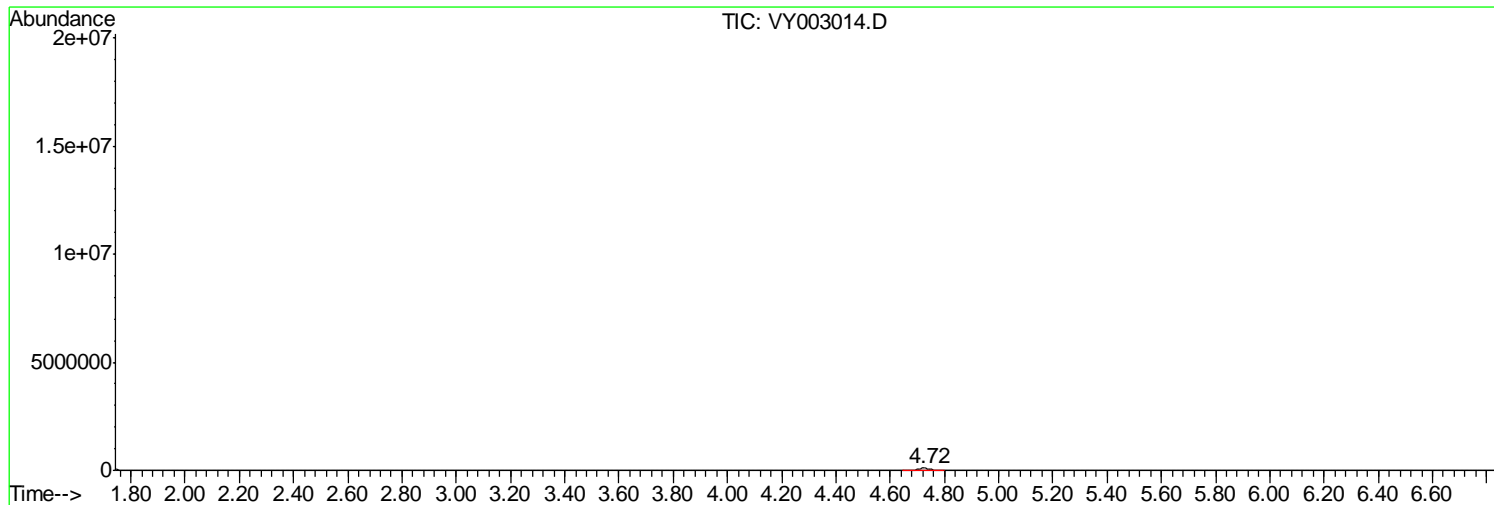
Sum of corrected areas: 43536246

Data Path : Z:\VOASRV\HPCHEM1\MSVOA Y\DATA\VY062920\
Data File : VY003014.D
Acq On : 29 Jun 2020 18:18
Operator : SY/MD
Sample : L3148-02
Misc : 7.24G/5ML/MSVOA Y/SOIL
ALS Vial : 18 Sample Multiplier: 1

Instrument :
MSVOA_Y
ClientSampleId :
EPEC-POLYMERS-02

Quant Method : Z:\VOASRV\HPCHEM1\MSVOA_Y\METHODS\82Y062920S.M
Quant Title : SW846 8260

TIC Library : C:\DATABASE\NIST11.L
TIC Integration Parameters: LSCINT.P



Data Path : Z:\VOASRV\HPCHEM1\MSVOA_Y\DATA\VY062920\
Data File : VY003014.D
Acq On : 29 Jun 2020 18:18
Operator : SY/MD
Sample : L3148-02
Misc : 7.24G/5ML/MSVOA_Y/SOIL
ALS Vial : 18 Sample Multiplier: 1

Instrument :
MSVOA_Y
ClientSampleId :
EPEC-POLYMERS-02

Quant Method : Z:\VOASRV\HPCHEM1\MSVOA_Y\METHODS\82Y062920S.M
Quant Title : SW846 8260

TIC Library : C:\DATABASE\NIST11.L
TIC Integration Parameters: LSCINT.P

No Library Search Compounds Detected

Data Path : Z:\VOASRV\HPCHEM1\MSVOA_Y\DATA\VY062920\
Data File : VY003014.D
Acq On : 29 Jun 2020 18:18
Operator : SY/MD
Sample : L3148-02
Misc : 7.24G/5ML/MSVOA_Y/SOIL
ALS Vial : 18 Sample Multiplier: 1

Instrument :
MSVOA_Y
ClientSampleId :
EPEC-POLYMERS-02

Quant Method : Z:\VOASRV\HPCHEM1\MSVOA_Y\METHODS\82Y062920S.M
Quant Title : SW846 8260

TIC Library : C:\DATABASE\NIST11.L
TIC Integration Parameters: LSCINT.P

TIC Top Hit name	RT	EstConc	Units	Response	--Internal Standard--			
					#	RT	Resp	Conc
