

Data Path : Z:\VOASRV\HPCHEM1\MSVOA Y\DATA\VY063020\  
 Data File : VY003039.D  
 Acq On : 30 Jun 2020 16:51  
 Operator : SY/MD  
 Sample : L3153-34  
 Misc : 6.74G/5ML/MSVOA Y/SOIL  
 ALS Vial : 15 Sample Multiplier: 1

Instrument :  
 MSVOA\_Y  
 ClientSampleId :

Quant Time: Jul 01 05:15:26 2020  
 Quant Method : Z:\VOASRV\HPCHEM1\MSVOA\_Y\METHODS\82Y062920S.M  
 Quant Title : SW846 8260  
 QLast Update : Tue Jun 30 04:11:35 2020  
 Response via : Initial Calibration

Internal Standards	R.T.	QIon	Response	Conc	Units	Dev(Min)
1) Pentafluorobenzene	7.80	168	369569	50.00	ug/l	0.00
34) 1,4-Difluorobenzene	8.69	114	591827	50.00	ug/l	0.00
63) Chlorobenzene-d5	11.49	117	550756	50.00	ug/l	0.00
72) 1,4-Dichlorobenzene-d4	13.42	152	254186	50.00	ug/l	0.00

## System Monitoring Compounds

33) 1,2-Dichloroethane-d4	8.14	65	198333	54.03	ug/l	0.00
Spiked Amount	50.000		Recovery	=	108.06%	
35) Dibromofluoromethane	7.72	113	193748	52.48	ug/l	0.00
Spiked Amount	50.000		Recovery	=	104.96%	
50) Toluene-d8	10.18	98	702484	51.07	ug/l	0.00
Spiked Amount	50.000		Recovery	=	102.14%	
62) 4-Bromofluorobenzene	12.48	95	241868	49.96	ug/l	0.00
Spiked Amount	50.000		Recovery	=	99.92%	

## Target Compounds

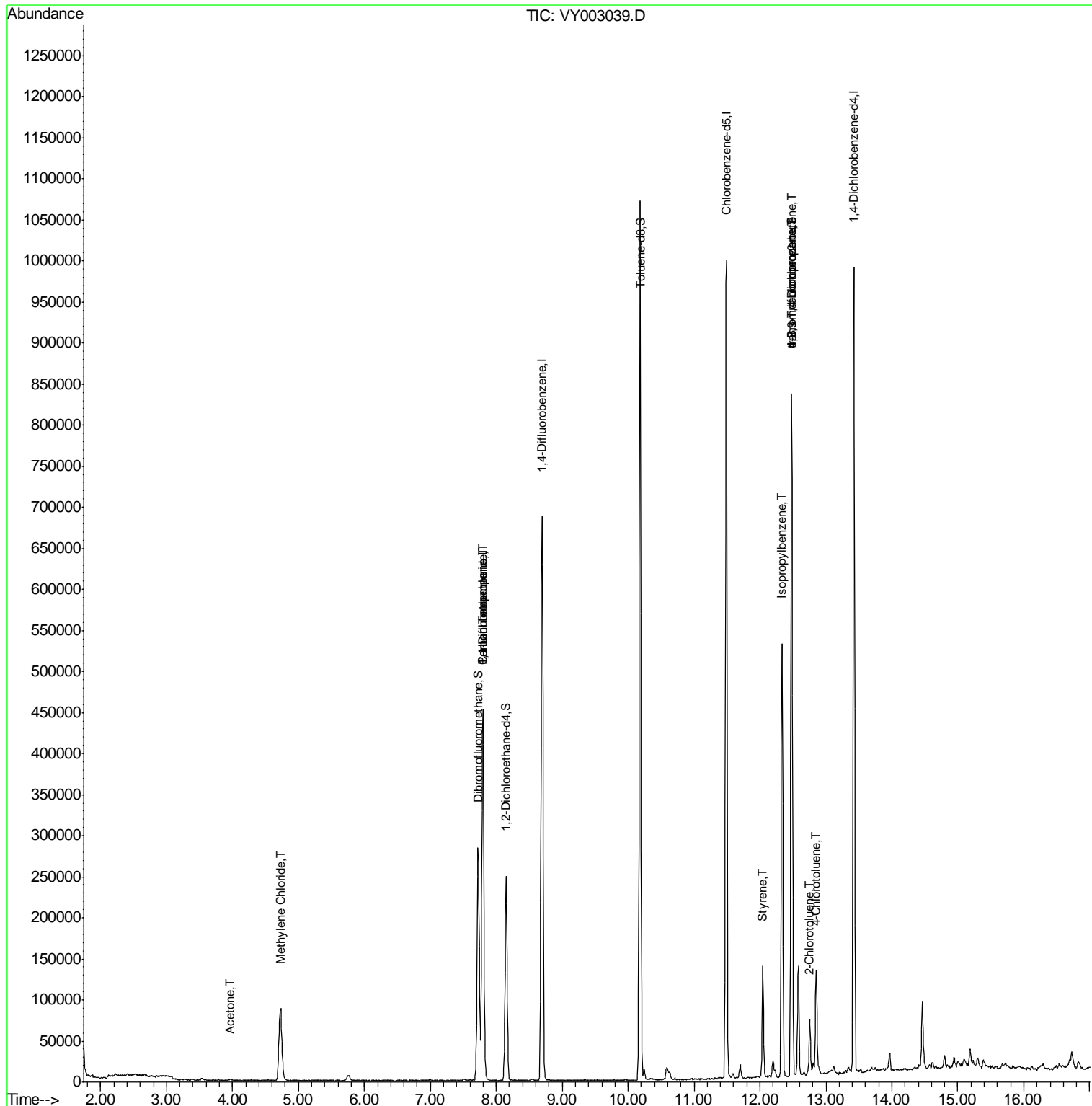
						Qvalue
16) Acetone	3.96	43	2465	2.847	ug/l #	61
20) Methylene Chloride	4.73	84	70320	13.052	ug/l	88
36) 1,1-Dichloropropene	7.80	75	23725	4.162	ug/l #	51
38) Carbon Tetrachloride	7.80	117	33046	5.572	ug/l #	17
70) Styrene	12.04	104	62470	5.248	ug/l	91
73) Isopropylbenzene	12.33	105	22849	1.374	ug/l #	60
76) 1,2,3-Trichloropropane	12.48	75	124288	49.406	ug/l #	100
79) 2-Chlorotoluene	12.75	91	34195	3.062	ug/l	96
81) trans-1,4-Dichloro-2-buten	12.48	75	124288	96.123	ug/l #	12
82) 4-Chlorotoluene	12.86	91	69489	5.977	ug/l	99

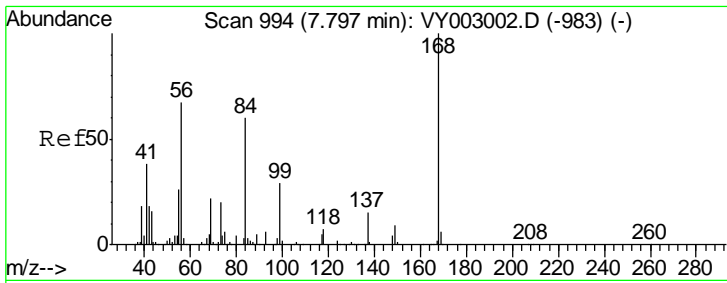
(#) = qualifier out of range (m) = manual integration (+) = signals summed

Data Path : Z:\VOASRV\HPCHEM1\MSVOA Y\DATA\VY063020\  
 Data File : VY003039.D  
 Acq On : 30 Jun 2020 16:51  
 Operator : SY/MD  
 Sample : L3153-34  
 Misc : 6.74G/5ML/MSVOA Y/SOIL  
 ALS Vial : 15 Sample Multiplier: 1

Instrument :  
 MSVOA\_Y  
 ClientSampled :

Quant Time: Jul 01 05:15:26 2020  
 Quant Method : Z:\VOASRV\HPCHEM1\MSVOA\_Y\METHODS\82Y062920S.M  
 Quant Title : SW846 8260  
 QLast Update : Tue Jun 30 04:11:35 2020  
 Response via : Initial Calibration

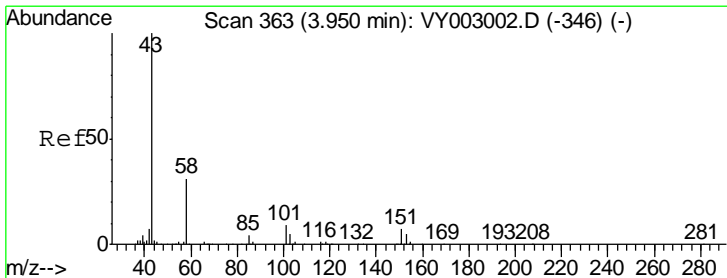
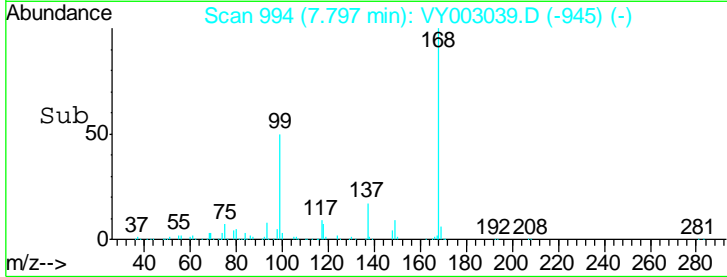
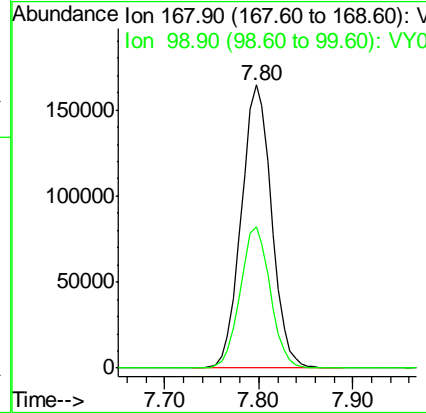
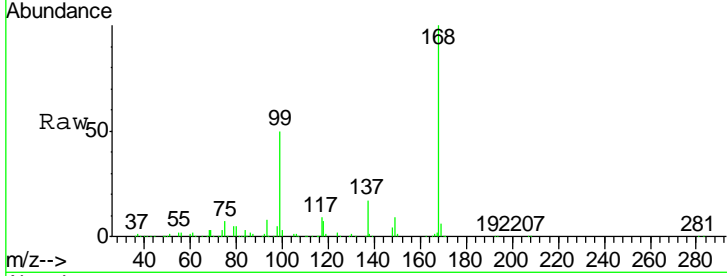




#1  
 Pentafluorobenzene  
 Concen: 50.000 ug/l  
 RT: 7.80 min Scan# 994  
 Delta R.T. -0.00 min  
 Lab File: VY003039.D  
 Acq: 30 Jun 2020 16:51

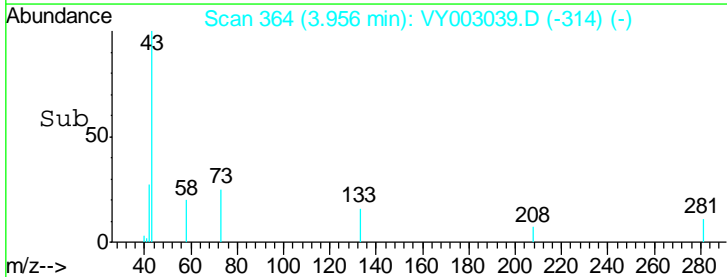
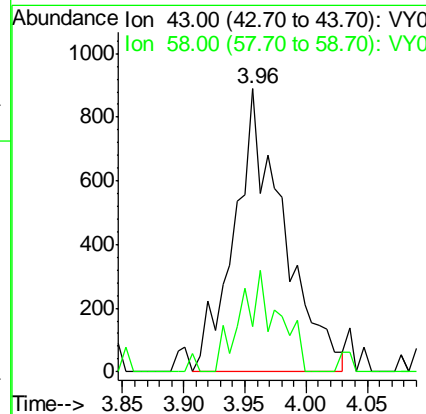
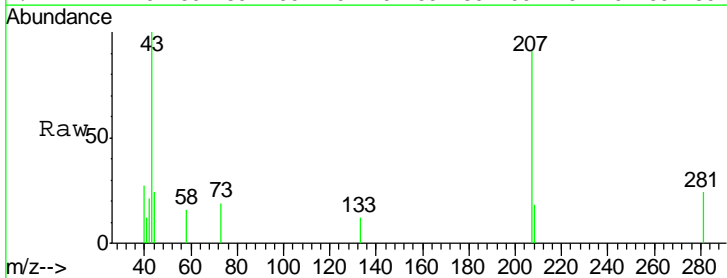
Instrument :  
 MSVOA\_Y  
 ClientSampled :

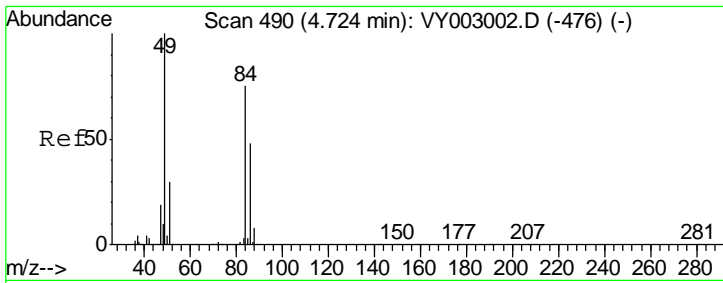
Tgt Ion	Resp	Lower	Upper
168	100		
99	49.7	39.2	58.8



#16  
 Acetone  
 Concen: 2.847 ug/l  
 RT: 3.96 min Scan# 364  
 Delta R.T. 0.01 min  
 Lab File: VY003039.D  
 Acq: 30 Jun 2020 16:51

Tgt Ion	Resp	Lower	Upper
43	100		
58	9.6	24.7	37.1#

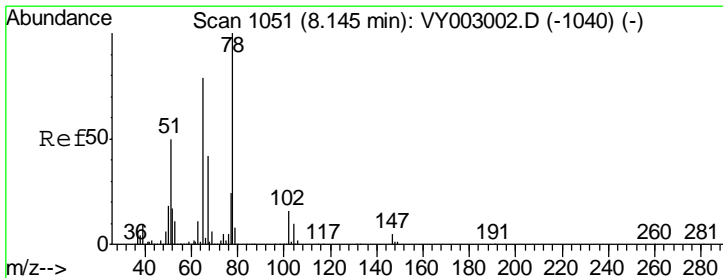
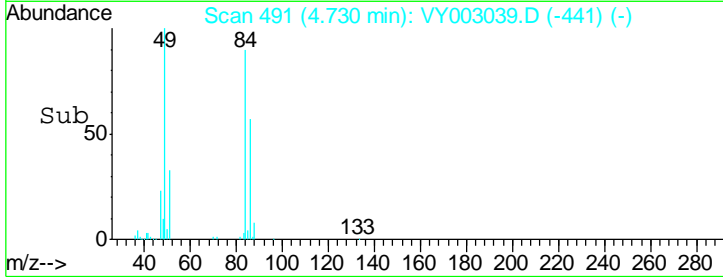
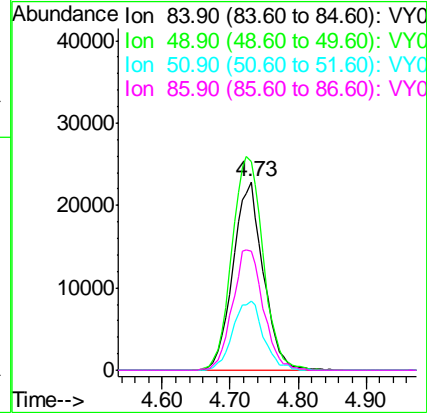
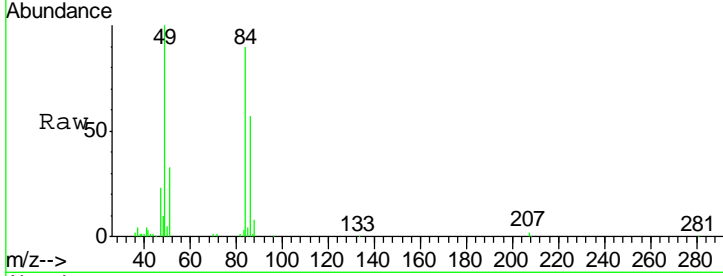




#20  
 Methylene Chloride  
 Concen: 13.052 ug/l  
 RT: 4.73 min Scan# 491  
 Delta R.T. 0.01 min  
 Lab File: VY003039.D  
 Acq: 30 Jun 2020 16:51

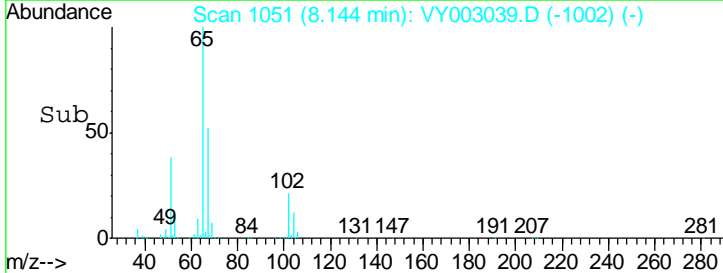
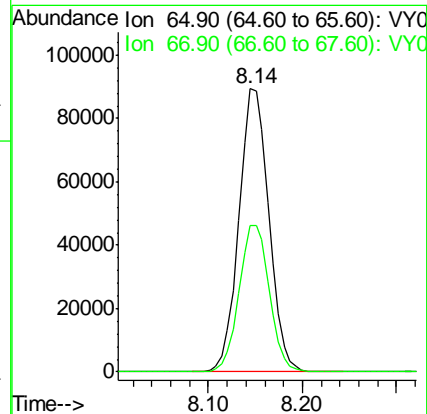
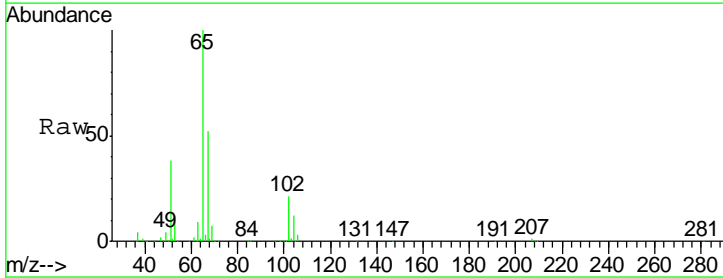
Instrument :  
 MSVOA\_Y  
 ClientSampled :

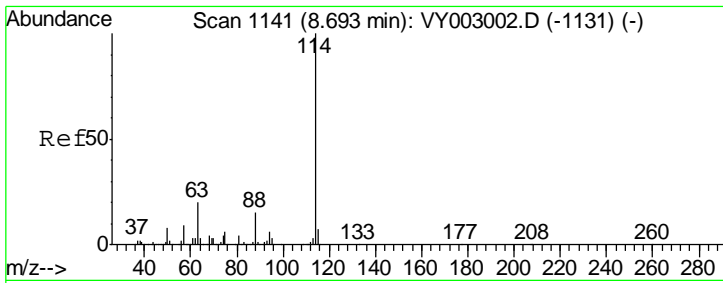
Tgt Ion	Resp	Lower	Upper
84	100		
49	110.6	106.8	160.2
51	36.5	32.0	48.0
86	63.4	51.4	77.2



#33  
 1,2-Dichloroethane-d4  
 Concen: 54.033 ug/l  
 RT: 8.14 min Scan# 1051  
 Delta R.T. -0.00 min  
 Lab File: VY003039.D  
 Acq: 30 Jun 2020 16:51

Tgt Ion	Resp	Lower	Upper
65	100		
67	52.3	0.0	105.6

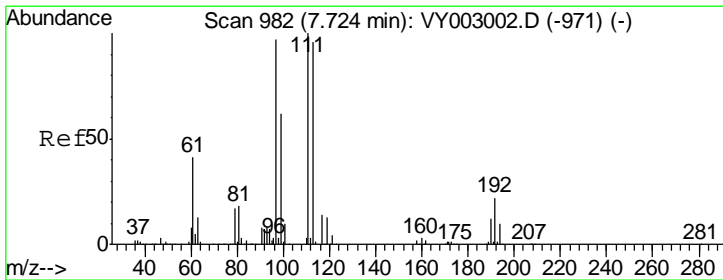
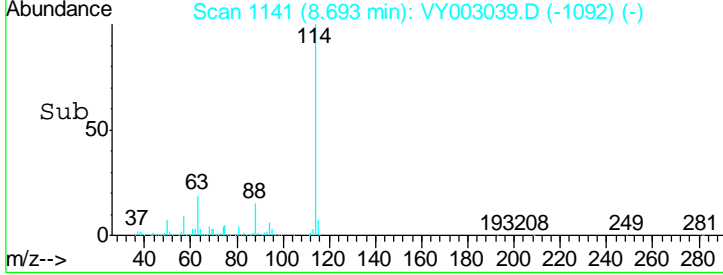
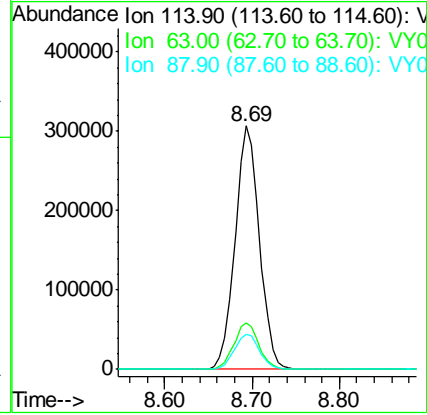
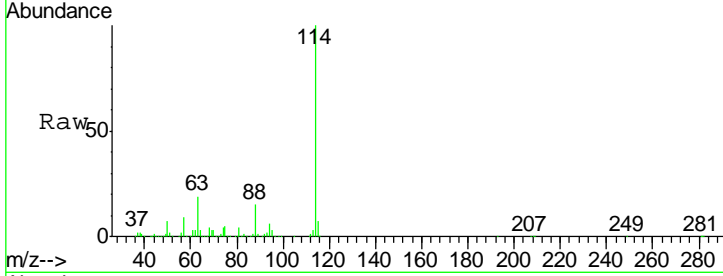




#34  
 1,4-Difluorobenzene  
 Concen: 50.000 ug/l  
 RT: 8.69 min Scan# 1141  
 Delta R.T. -0.00 min  
 Lab File: VY003039.D  
 Acq: 30 Jun 2020 16:51

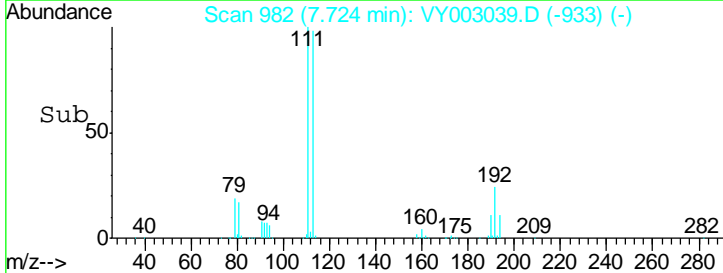
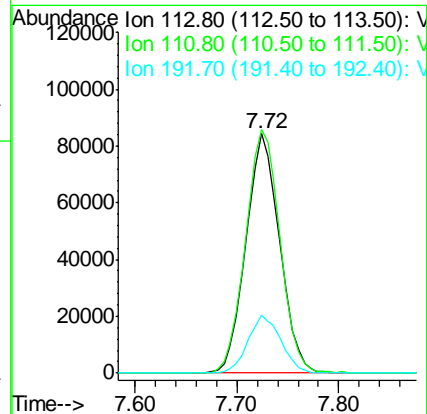
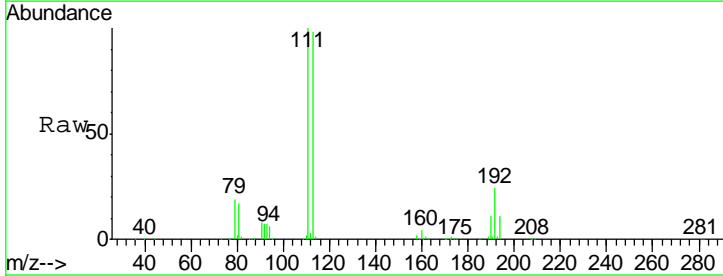
Instrument :  
 MSVOA\_Y  
 ClientSampled :

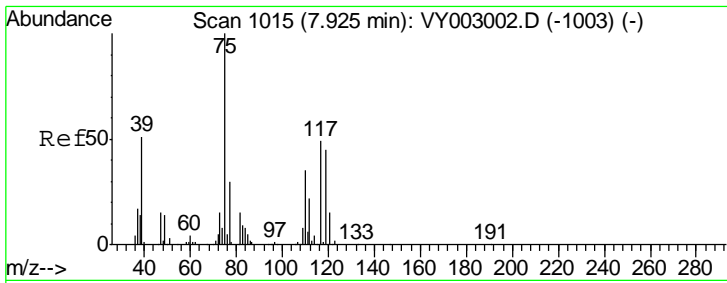
Tgt Ion	Resp	Lower	Upper
114	591827		
63	19.1	0.0	40.6
88	14.6	0.0	30.0



#35  
 Dibromofluoromethane  
 Concen: 52.479 ug/l  
 RT: 7.72 min Scan# 982  
 Delta R.T. -0.00 min  
 Lab File: VY003039.D  
 Acq: 30 Jun 2020 16:51

Tgt Ion	Resp	Lower	Upper
113	193748		
111	104.4	82.6	123.8
192	23.7	18.1	27.1

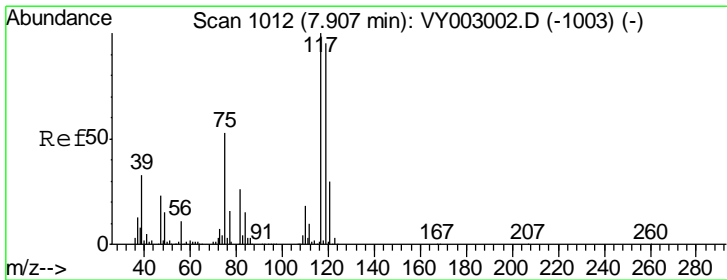
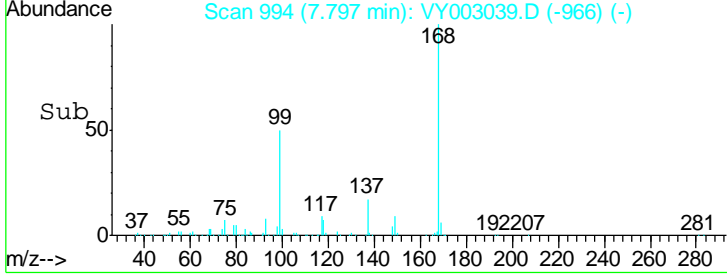
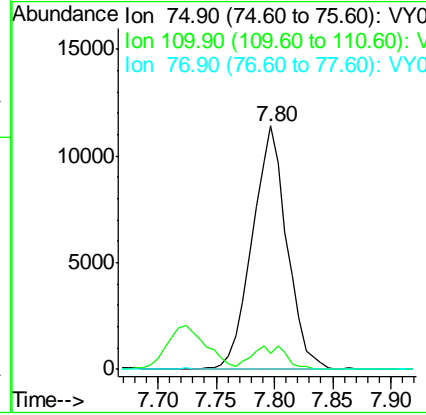
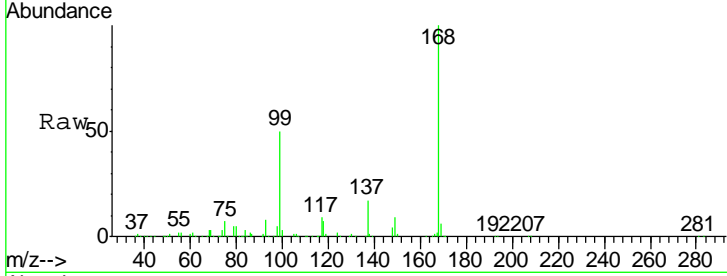




#36  
 1,1-Dichloropropene  
 Concen: 4.162 ug/l  
 RT: 7.80 min Scan# 994  
 Delta R.T. -0.13 min  
 Lab File: VY003039.D  
 Acq: 30 Jun 2020 16:51

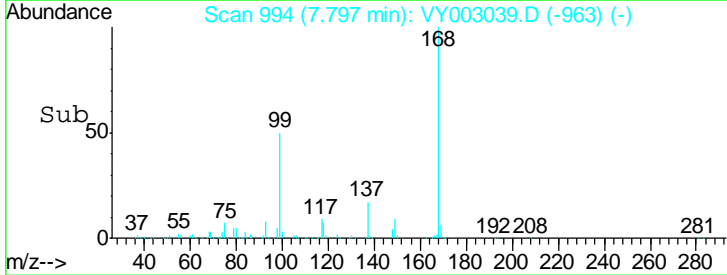
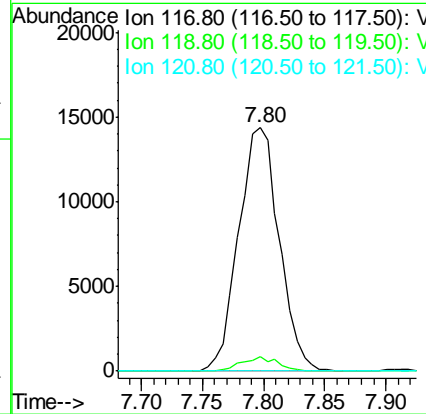
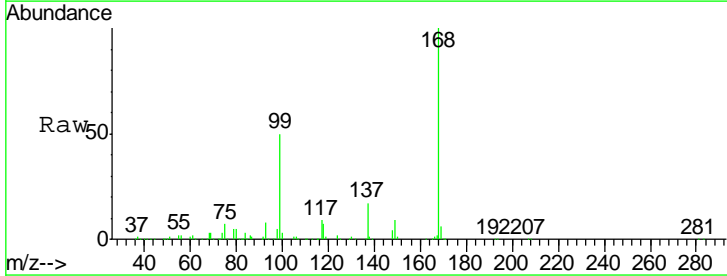
Instrument :  
 MSVOA\_Y  
 ClientSampled :

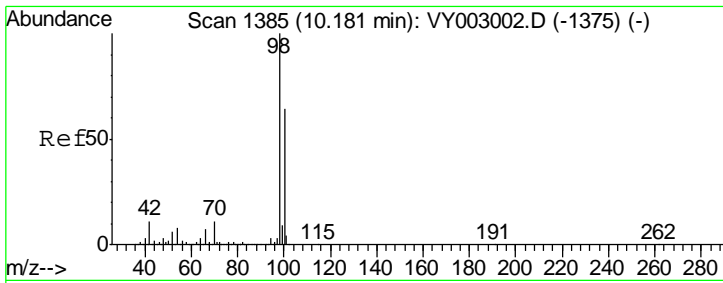
Tgt Ion	Resp	Lower	Upper
75	100		
110	9.4	17.1	51.2#
77	0.0	24.9	37.3#



#38  
 Carbon Tetrachloride  
 Concen: 5.572 ug/l  
 RT: 7.80 min Scan# 994  
 Delta R.T. -0.11 min  
 Lab File: VY003039.D  
 Acq: 30 Jun 2020 16:51

Tgt Ion	Resp	Lower	Upper
117	100		
119	5.7	75.7	113.5#
121	0.0	23.9	35.9#

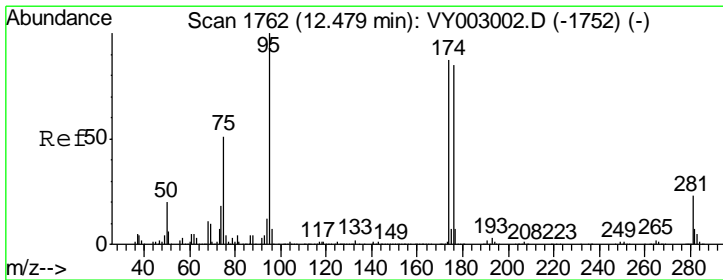
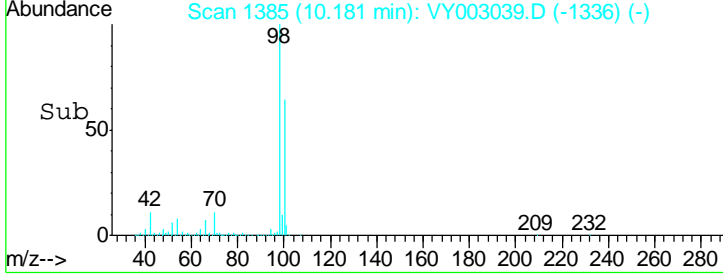
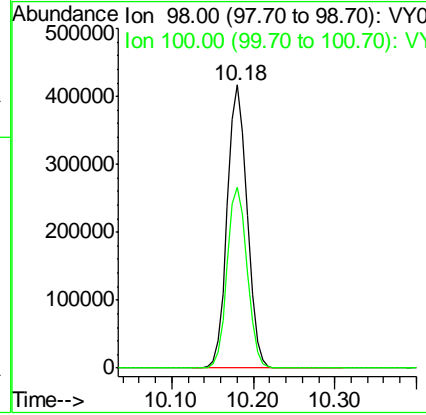
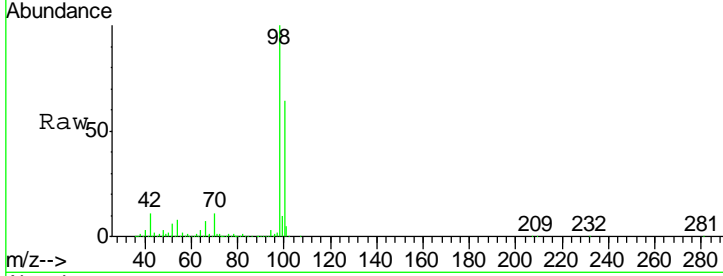




#50  
 Toluene-d8  
 Concen: 51.075 ug/l  
 RT: 10.18 min Scan# 1385  
 Delta R.T. -0.00 min  
 Lab File: VY003039.D  
 Acq: 30 Jun 2020 16:51

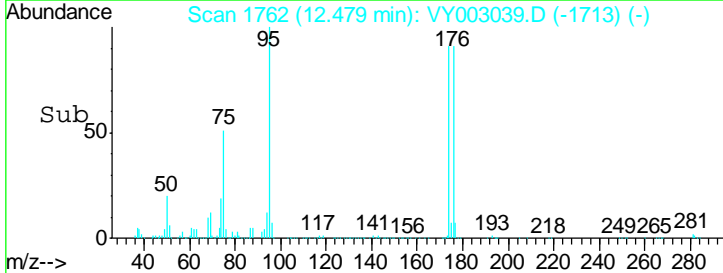
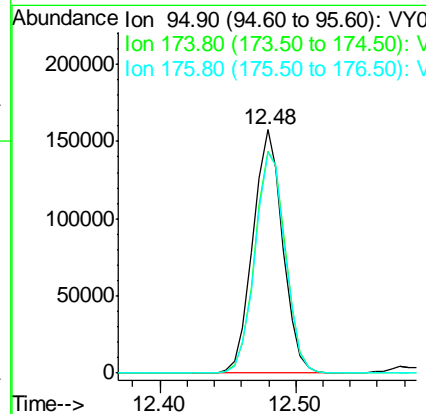
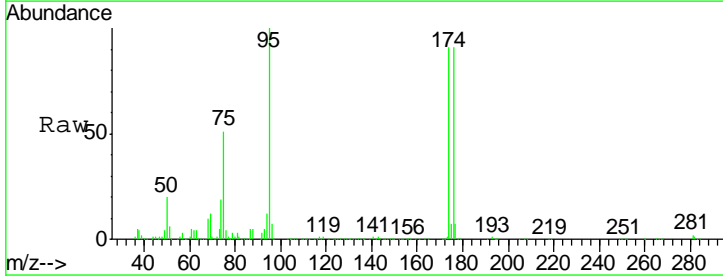
Instrument :  
 MSVOA\_Y  
 ClientSampled :

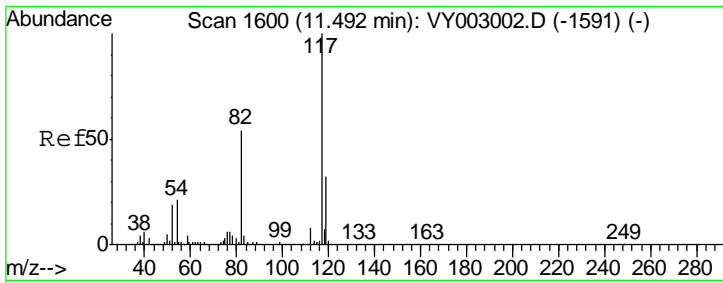
Tgt Ion	Resp	Lower	Upper
98	100		
100	64.3	51.1	76.7



#62  
 4-Bromofluorobenzene  
 Concen: 49.958 ug/l  
 RT: 12.48 min Scan# 1762  
 Delta R.T. -0.00 min  
 Lab File: VY003039.D  
 Acq: 30 Jun 2020 16:51

Tgt Ion	Resp	Lower	Upper
95	100		
174	93.7	0.0	184.8
176	92.2	0.0	183.0

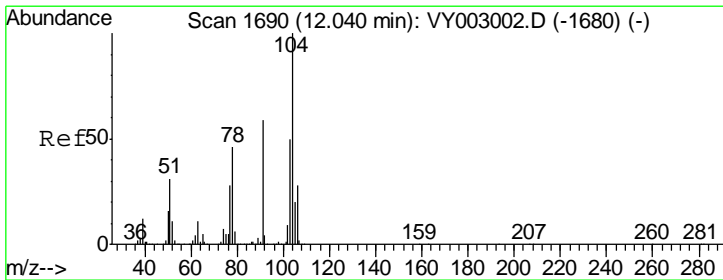
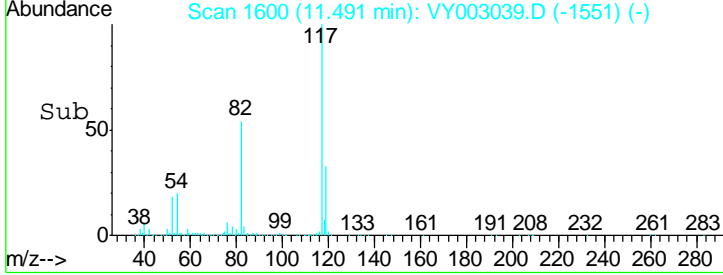
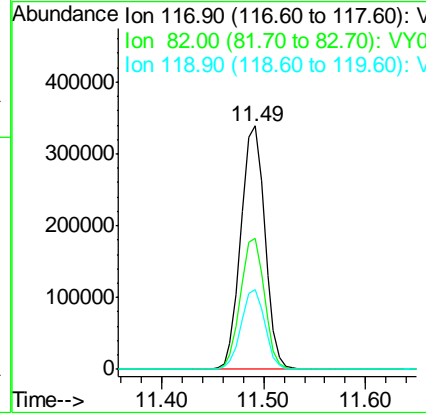
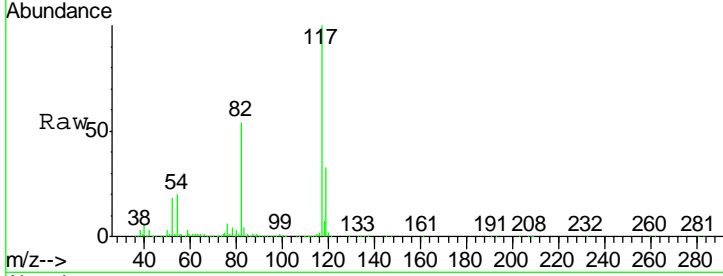




#63  
 Chlorobenzene-d5  
 Concen: 50.000 ug/l  
 RT: 11.49 min Scan# 1600  
 Delta R.T. -0.00 min  
 Lab File: VY003039.D  
 Acq: 30 Jun 2020 16:51

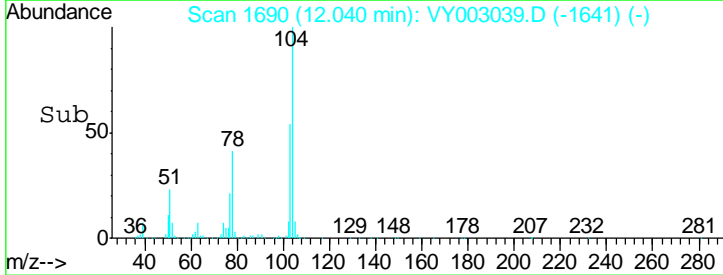
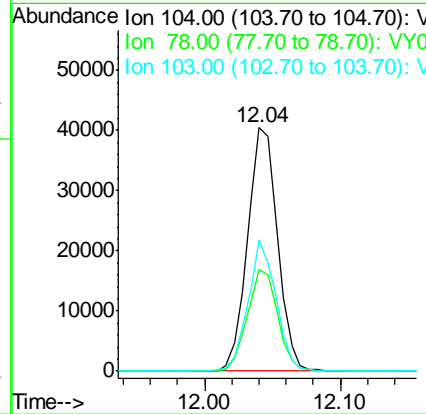
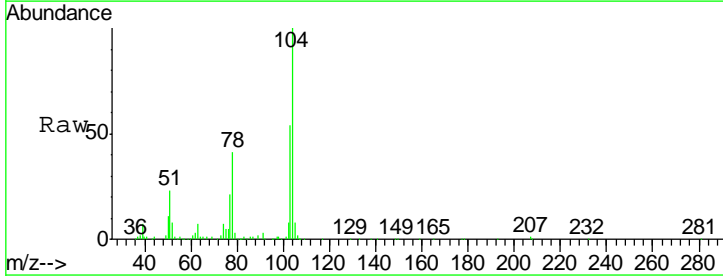
Instrument :  
 MSVOA\_Y  
 ClientSampled :

Tgt Ion	Resp	Lower	Upper
117	100		
82	53.8	43.0	64.6
119	32.8	25.8	38.8

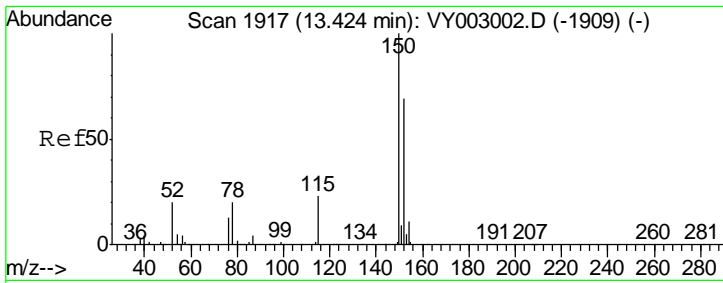


#70  
 Styrene  
 Concen: 5.248 ug/l  
 RT: 12.04 min Scan# 1690  
 Delta R.T. -0.00 min  
 Lab File: VY003039.D  
 Acq: 30 Jun 2020 16:51

Tgt Ion	Resp	Lower	Upper
104	100		
78	42.2	40.4	60.6
103	50.1	44.1	66.1



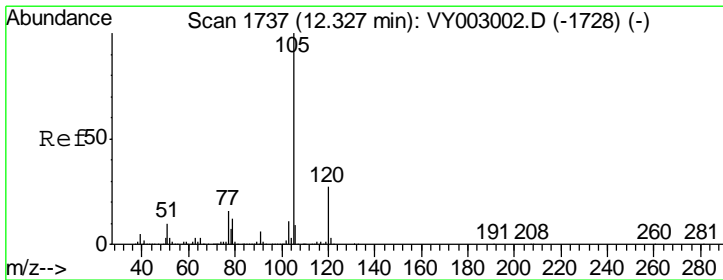
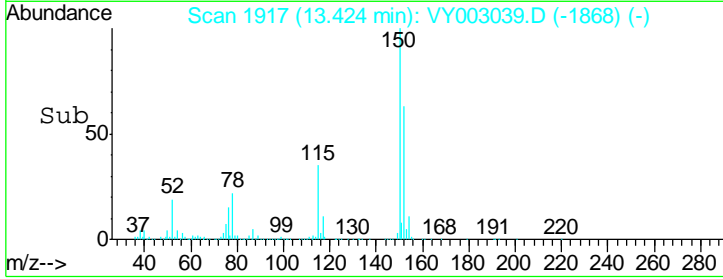
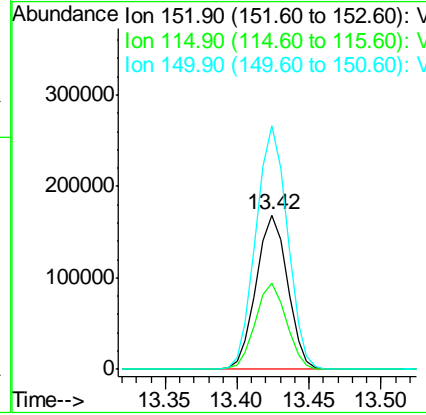
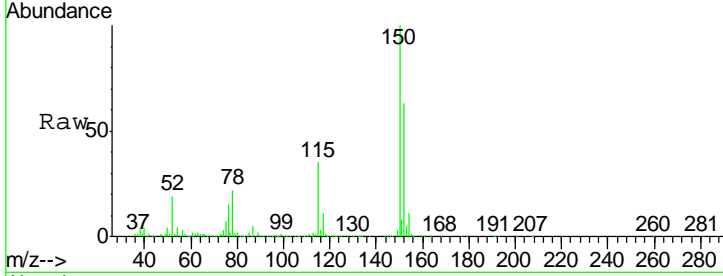




#72  
 1,4-Dichlorobenzene-d4  
 Concen: 50.000 ug/l  
 RT: 13.42 min Scan# 1917  
 Delta R.T. -0.00 min  
 Lab File: VY003039.D  
 Acq: 30 Jun 2020 16:51

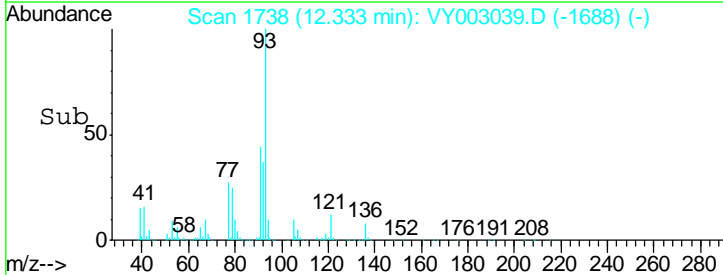
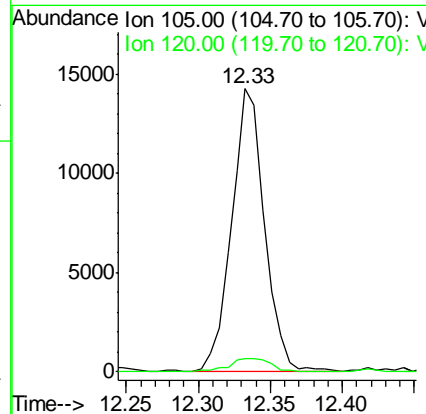
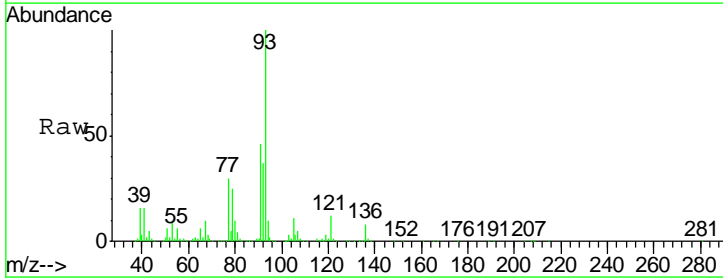
Instrument :  
 MSVOA\_Y  
 ClientSampled :

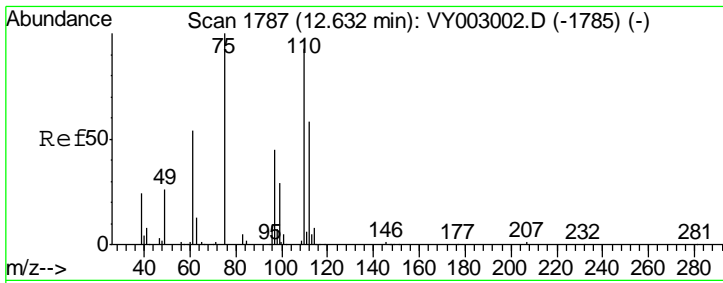
Tgt Ion	Resp	Lower	Upper
152	100		
115	55.1	27.3	81.9
150	158.5	0.0	343.4



#73  
 Isopropylbenzene  
 Concen: 1.374 ug/l  
 RT: 12.33 min Scan# 1738  
 Delta R.T. 0.01 min  
 Lab File: VY003039.D  
 Acq: 30 Jun 2020 16:51

Tgt Ion	Resp	Lower	Upper
105	100		
120	6.0	13.4	40.1#

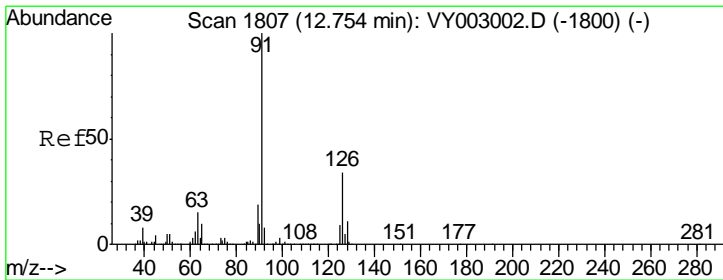
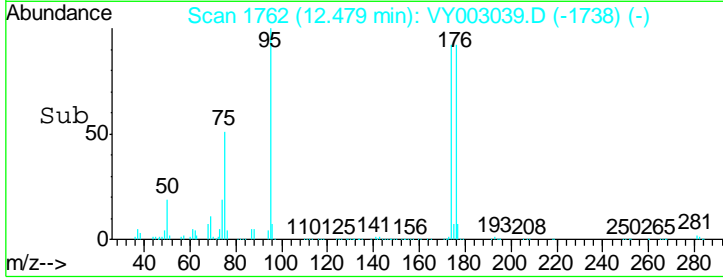
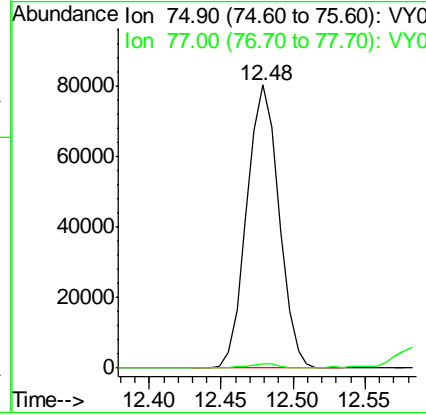
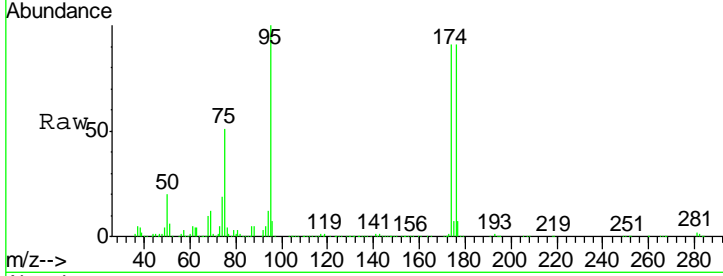




#76  
 1,2,3-Trichloropropane  
 Concen: 49.406 ug/l  
 RT: 12.48 min Scan# 1762  
 Delta R.T. -0.15 min  
 Lab File: VY003039.D  
 Acq: 30 Jun 2020 16:51

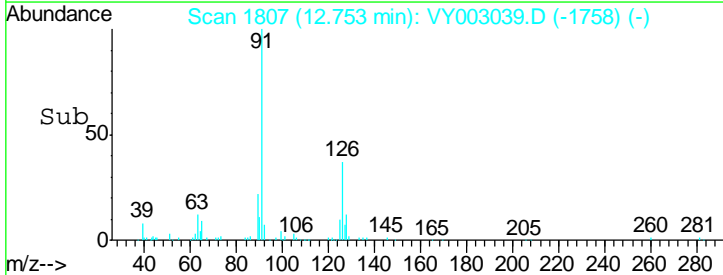
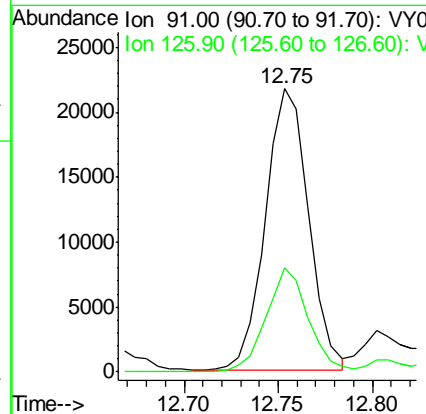
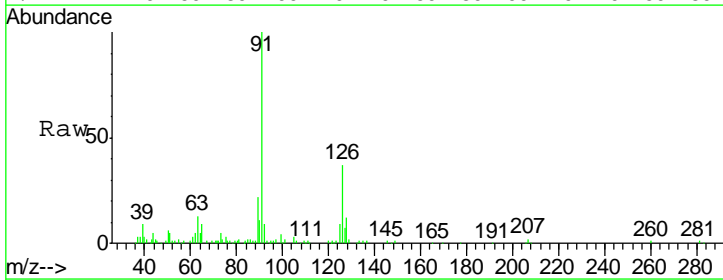
Instrument :  
 MSVOA\_Y  
 ClientSampled :

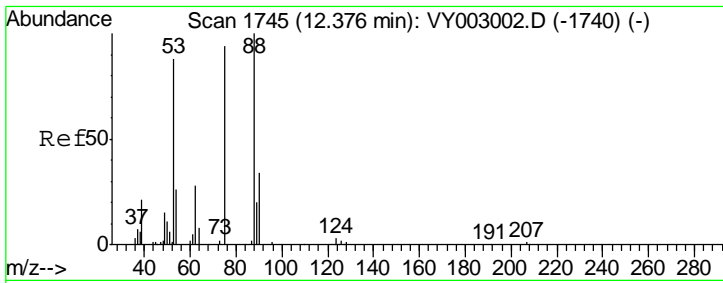
Tgt Ion	Resp	Lower	Upper
75	100		
77	1.4	0.0	0.0#



#79  
 2-Chlorotoluene  
 Concen: 3.062 ug/l  
 RT: 12.75 min Scan# 1807  
 Delta R.T. -0.00 min  
 Lab File: VY003039.D  
 Acq: 30 Jun 2020 16:51

Tgt Ion	Resp	Lower	Upper
91	100		
126	36.3	17.1	51.3

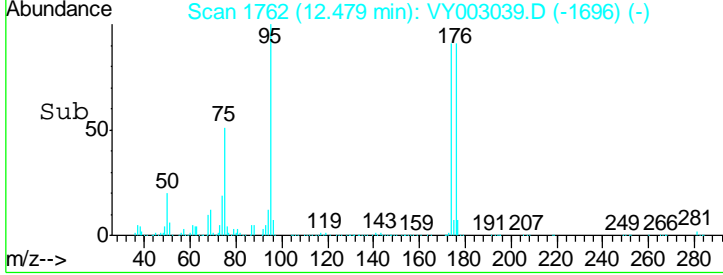
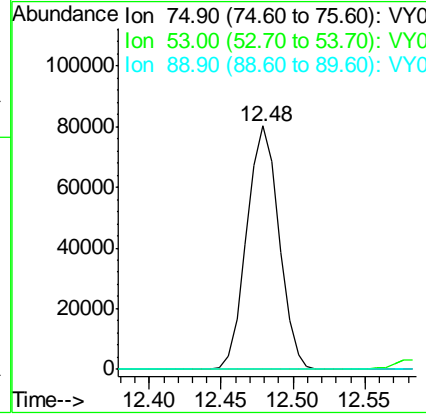
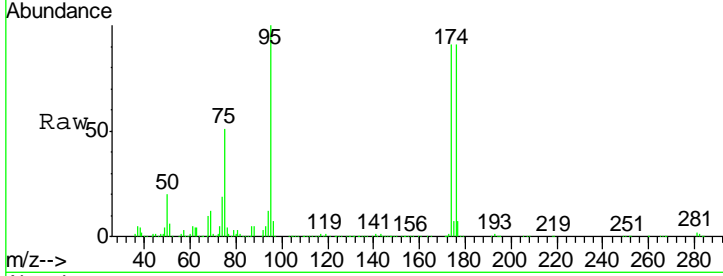




#81  
 trans-1,4-Dichloro-2-butene  
 Concen: 96.123 ug/l  
 RT: 12.48 min Scan# 1762  
 Delta R.T. 0.10 min  
 Lab File: VY003039.D  
 Acq: 30 Jun 2020 16:51

Instrument : MSVOA\_Y  
 ClientSampled :

Tgt Ion	Resp	Lower	Upper
75	100		
53	0.0	73.9	110.9#
89	0.0	37.5	56.3#



#82  
 4-Chlorotoluene  
 Concen: 5.977 ug/l  
 RT: 12.86 min Scan# 1824  
 Delta R.T. 0.01 min  
 Lab File: VY003039.D  
 Acq: 30 Jun 2020 16:51

Tgt Ion	Resp	Lower	Upper
91	100		
126	35.3	17.4	52.3

