

Data Path : Z:\voasrv\HPCHEM1\MSVOA_Y\Data\VY063022\
 Data File : VY009406.D
 Acq On : 30 Jun 2022 20:17
 Operator : KP/MD
 Sample : N3549-01
 Misc : 5.05g/5.0mL/MSVOA_Y/SOIL
 ALS Vial : 17 Sample Multiplier: 1

Instrument :
 MSVOA_Y
 ClientSampleId :

Quant Time: Jul 01 03:49:20 2022
 Quant Method : Z:\voasrv\HPCHEM1\MSVOA_Y\methods\82Y062822S.M
 Quant Title : SW846 8260
 QLast Update : Wed Jun 29 17:35:34 2022
 Response via : Initial Calibration

Compound	R.T.	QIon	Response	Conc	Units	Dev(Min)

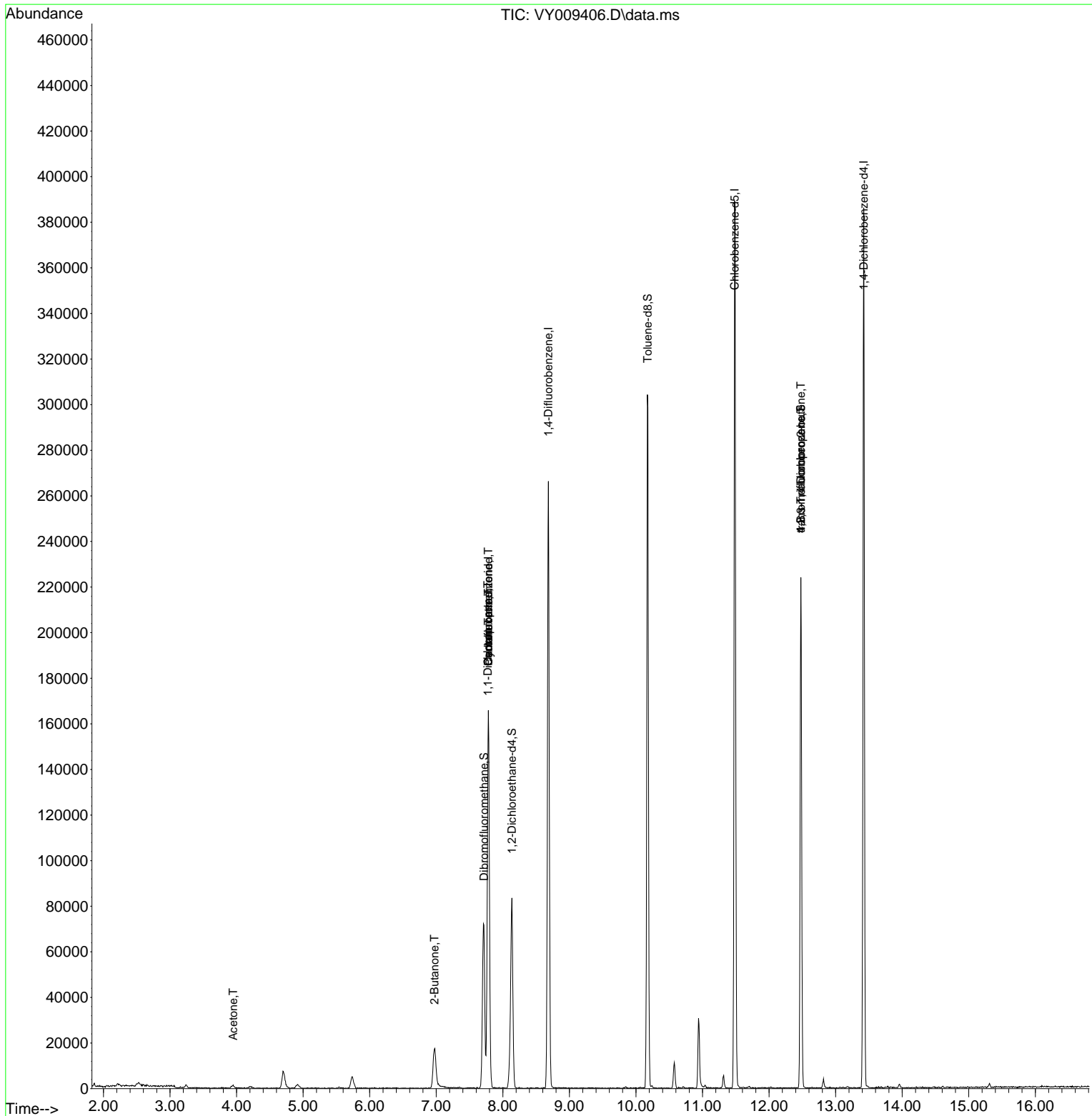
Internal Standards						
1) Pentafluorobenzene	7.783	168	128345	50.000	ug/l	0.00
34) 1,4-Difluorobenzene	8.685	114	217192	50.000	ug/l	0.00
63) Chlorobenzene-d5	11.483	117	205862	50.000	ug/l	0.00
72) 1,4-Dichlorobenzene-d4	13.422	152	94114	50.000	ug/l	0.00
System Monitoring Compounds						
33) 1,2-Dichloroethane-d4	8.136	65	57035	55.482	ug/l	0.00
Spiked Amount	50.000	Range	50 - 163	Recovery	=	110.960%
35) Dibromofluoromethane	7.716	113	50856	42.544	ug/l	0.00
Spiked Amount	50.000	Range	54 - 147	Recovery	=	85.080%
50) Toluene-d8	10.179	98	192285	52.465	ug/l	0.00
Spiked Amount	50.000	Range	49 - 140	Recovery	=	104.920%
62) 4-Bromofluorobenzene	12.477	95	61082	35.141	ug/l	0.00
Spiked Amount	50.000	Range	25 - 144	Recovery	=	70.280%
Target Compounds						
					Qvalue	
11) Tert butyl alcohol	4.911	59	942	Below Cal	#	77
16) Acetone	3.948	43	1918	5.681	ug/l	95
18) Methyl Acetate	4.454	43	51	Below Cal	#	56
20) Methylene Chloride	4.698	84	5134	Below Cal	#	79
25) 2-Butanone	6.972	43	795	1.485	ug/l	# 54
31) Cyclohexane	7.783	56	2531	1.095	ug/l	# 23
36) 1,1-Dichloropropene	7.777	75	9633	4.609	ug/l	# 45
38) Carbon Tetrachloride	7.783	117	12120	5.548	ug/l	# 15
76) 1,2,3-Trichloropropane	12.477	75	32286	29.294	ug/l	# 100
81) trans-1,4-Dichloro-2-b...	12.477	75	32286	65.222	ug/l	# 7

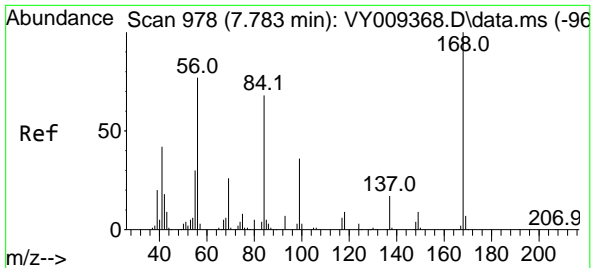
(#) = qualifier out of range (m) = manual integration (+) = signals summed

Data Path : Z:\voasrv\HPCHEM1\MSVOA_Y\Data\VY063022\
 Data File : VY009406.D
 Acq On : 30 Jun 2022 20:17
 Operator : KP/MD
 Sample : N3549-01
 Misc : 5.05g/5.0mL/MSVOA_Y/SOIL
 ALS Vial : 17 Sample Multiplier: 1

Instrument :
 MSVOA_Y
 ClientSampleId :

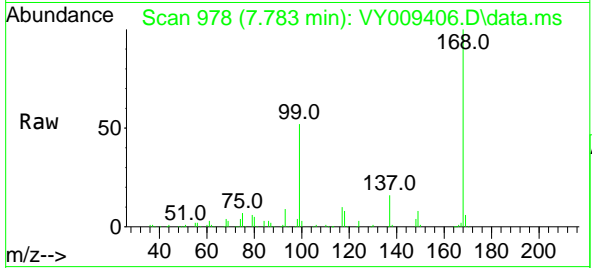
Quant Time: Jul 01 03:49:20 2022
 Quant Method : Z:\voasrv\HPCHEM1\MSVOA_Y\methods\82Y062822S.M
 Quant Title : SW846 8260
 QLast Update : Wed Jun 29 17:35:34 2022
 Response via : Initial Calibration



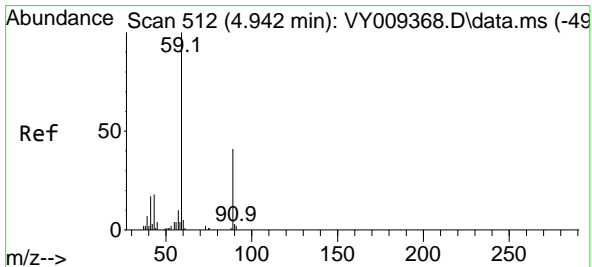
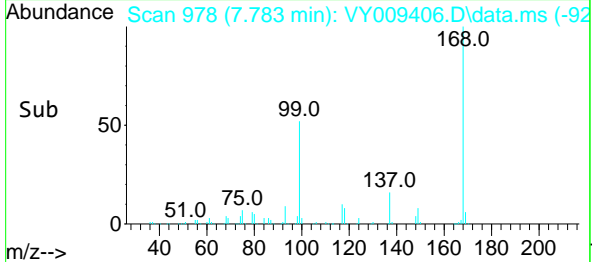
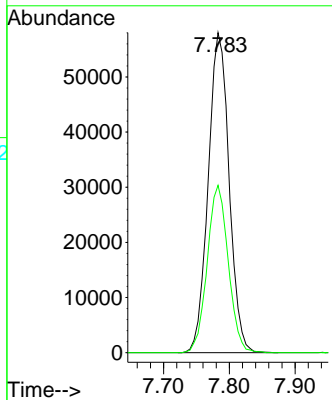


#1
 Pentafluorobenzene
 Concen: 50.000 ug/l
 RT: 7.783 min Scan# 91
 Delta R.T. -0.000 min
 Lab File: VY009406.D
 Acq: 30 Jun 2022 20:17

Instrument :
 MSVOA_Y
 ClientSampleId :

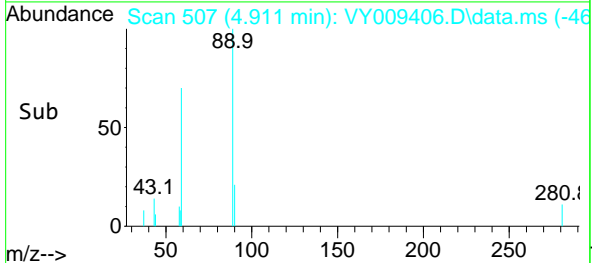
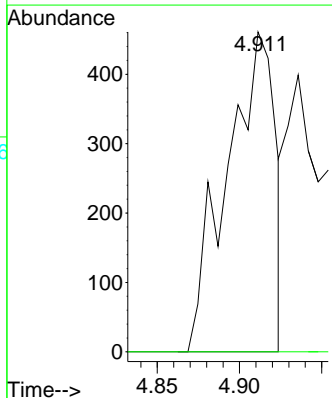
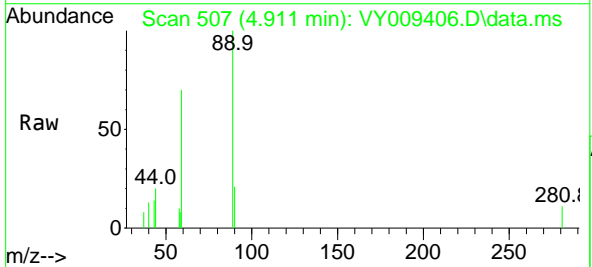


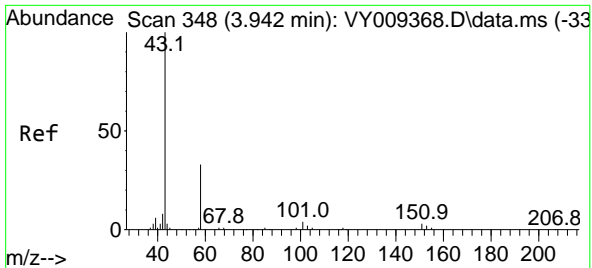
Tgt Ion:168 Resp: 128345
 Ion Ratio Lower Upper
 168 100
 99 52.3 46.9 70.3



#11
 Tert butyl alcohol
 Concen: Below Cal
 RT: 4.911 min Scan# 507
 Delta R.T. -0.031 min
 Lab File: VY009406.D
 Acq: 30 Jun 2022 20:17

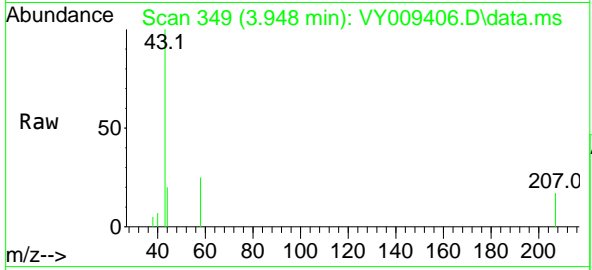
Tgt Ion: 59 Resp: 942
 Ion Ratio Lower Upper
 59 100
 57 0.0 6.4 9.6#



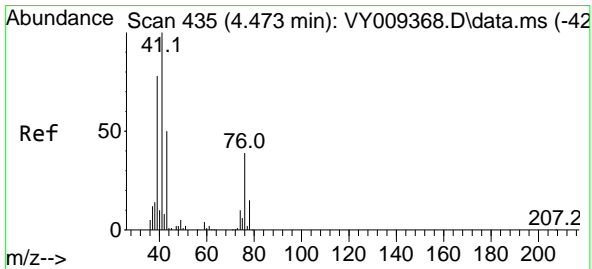
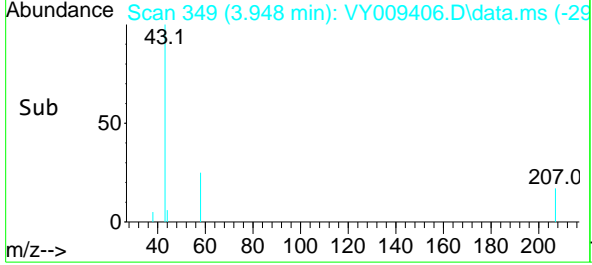
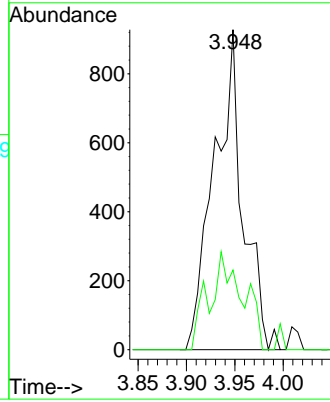


#16
 Acetone
 Concen: 5.681 ug/l
 RT: 3.948 min Scan# 34
 Delta R.T. 0.006 min
 Lab File: VY009406.D
 Acq: 30 Jun 2022 20:17

Instrument :
 MSVOA_Y
 ClientSampleId :

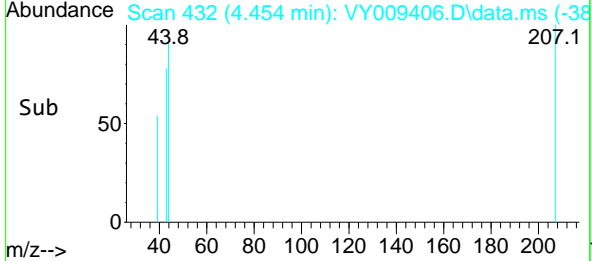
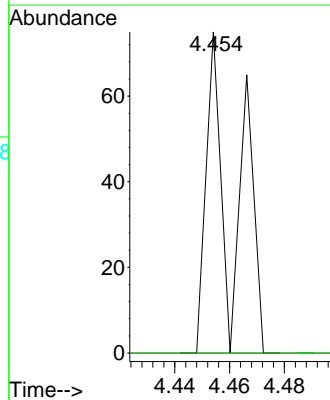
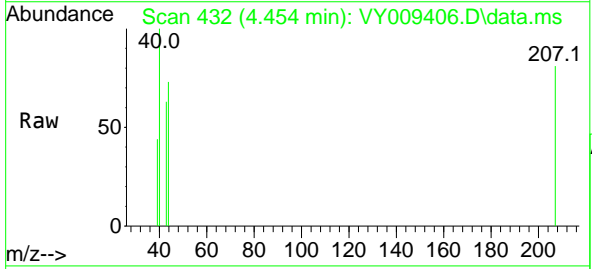


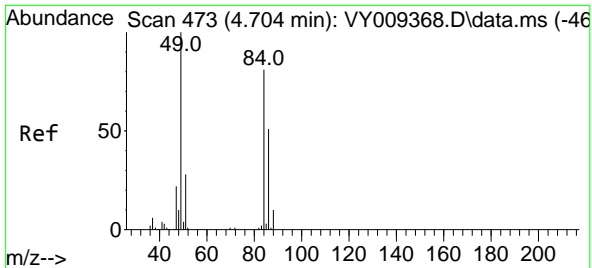
Tgt Ion: 43 Resp: 1918
 Ion Ratio Lower Upper
 43 100
 58 24.9 22.0 33.0



#18
 Methyl Acetate
 Concen: Below Cal
 RT: 4.454 min Scan# 432
 Delta R.T. -0.019 min
 Lab File: VY009406.D
 Acq: 30 Jun 2022 20:17

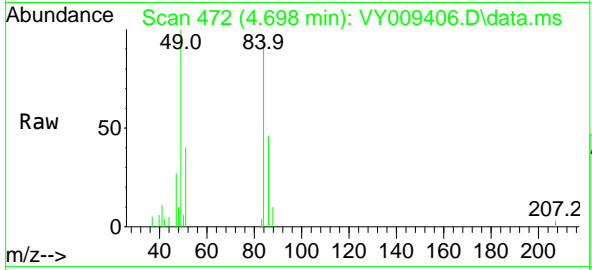
Tgt Ion: 43 Resp: 51
 Ion Ratio Lower Upper
 43 100
 74 0.0 16.6 24.8#





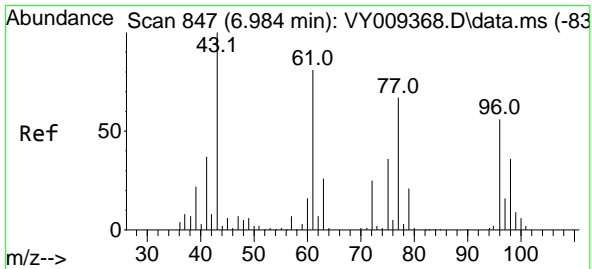
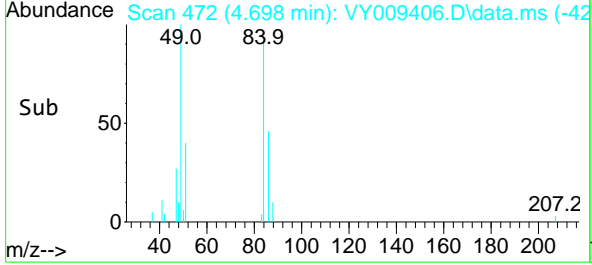
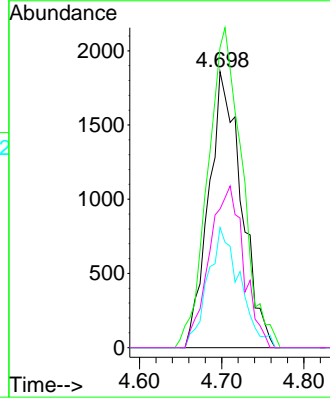
#20
 Methylene Chloride
 Concen: Below Cal
 RT: 4.698 min Scan# 41
 Delta R.T. -0.012 min
 Lab File: VY009406.D
 Acq: 30 Jun 2022 20:17

Instrument :
 MSVOA_Y
 ClientSampleId :



Tgt Ion: 84 Resp: 5134

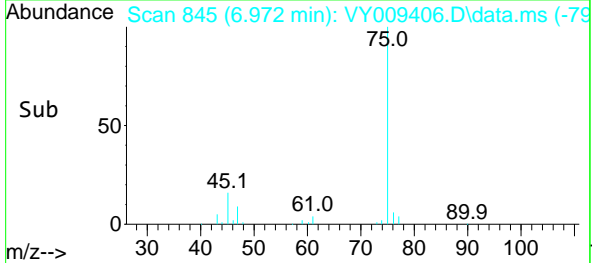
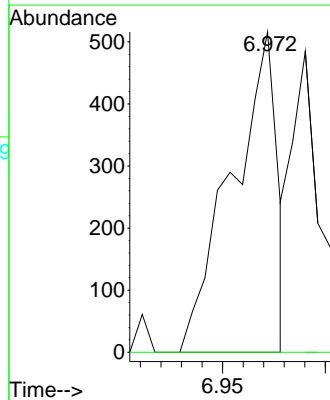
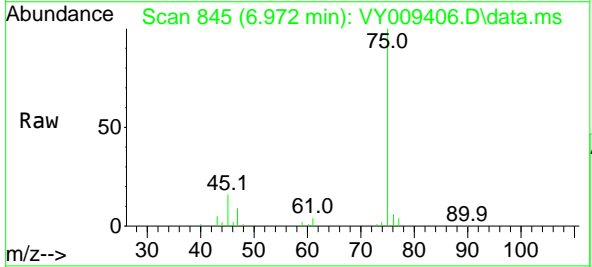
Ion	Ratio	Lower	Upper
84	100		
49	108.8	114.4	171.6#
51	43.5	35.3	52.9
86	50.3	53.7	80.5#

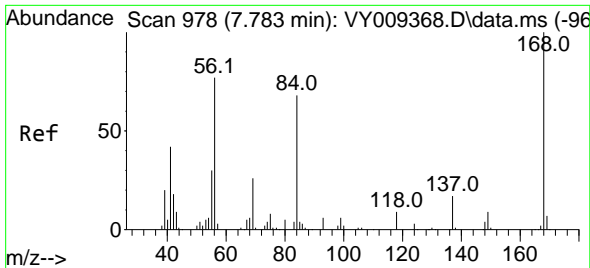


#25
 2-Butanone
 Concen: 1.485 ug/l
 RT: 6.972 min Scan# 845
 Delta R.T. -0.006 min
 Lab File: VY009406.D
 Acq: 30 Jun 2022 20:17

Tgt Ion: 43 Resp: 795

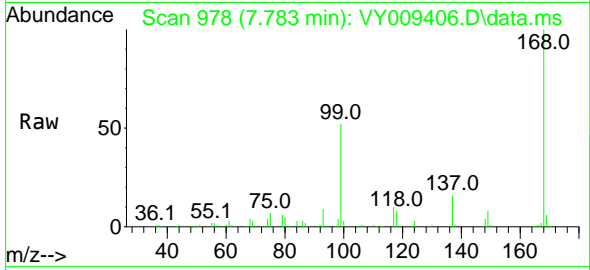
Ion	Ratio	Lower	Upper
43	100		
72	0.0	17.7	26.5#



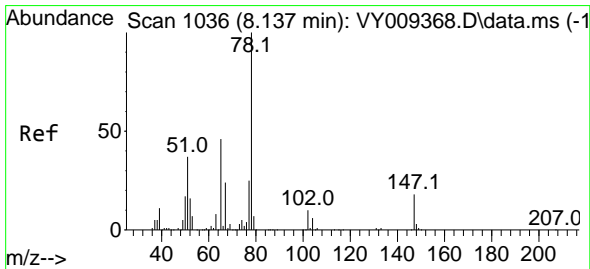
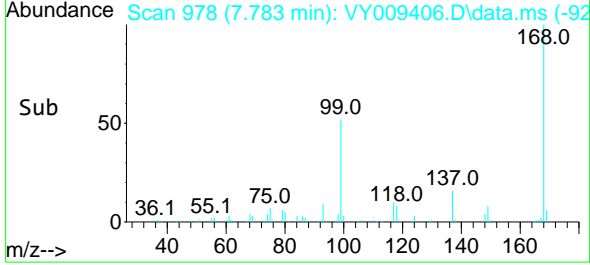
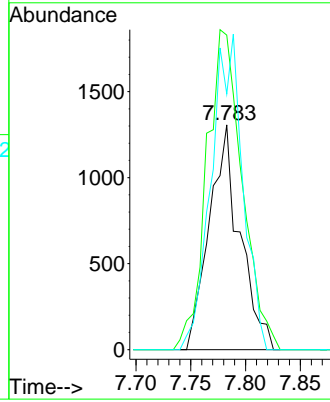


#31
 Cyclohexane
 Concen: 1.095 ug/l
 RT: 7.783 min Scan# 91
 Delta R.T. -0.000 min
 Lab File: VY009406.D
 Acq: 30 Jun 2022 20:17

Instrument :
 MSVOA_Y
 ClientSampleId :

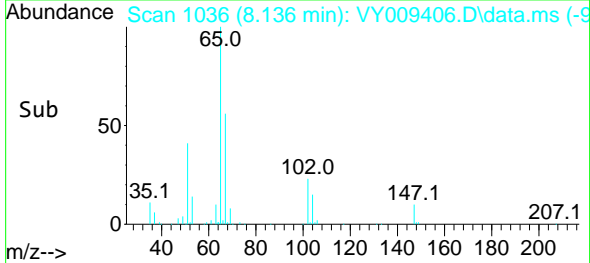
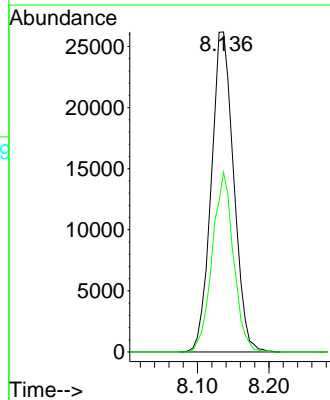
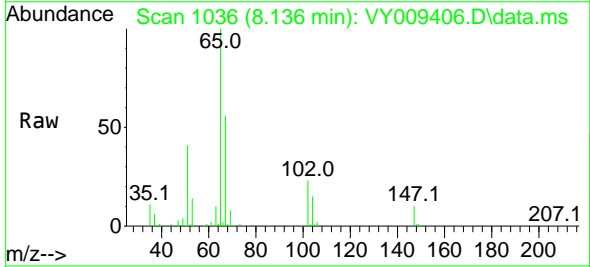


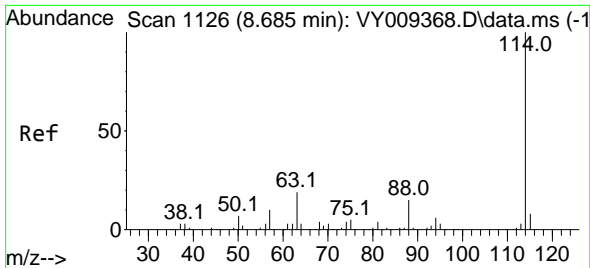
Tgt Ion: 56 Resp: 2531
 Ion Ratio Lower Upper
 56 100
 69 139.9 26.7 40.1#
 84 113.7 67.2 100.8#



#33
 1,2-Dichloroethane-d4
 Concen: 55.482 ug/l
 RT: 8.136 min Scan# 1036
 Delta R.T. 0.000 min
 Lab File: VY009406.D
 Acq: 30 Jun 2022 20:17

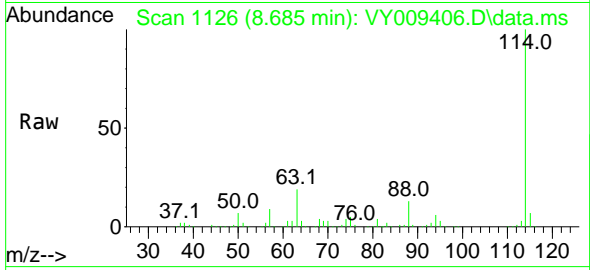
Tgt Ion: 65 Resp: 57035
 Ion Ratio Lower Upper
 65 100
 67 53.1 0.0 99.4



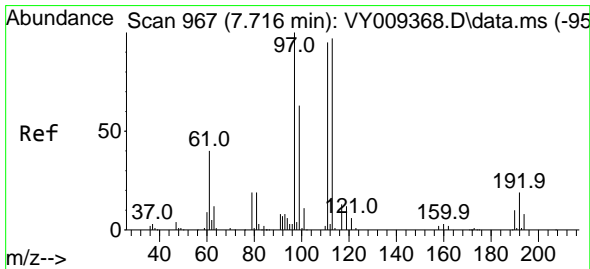
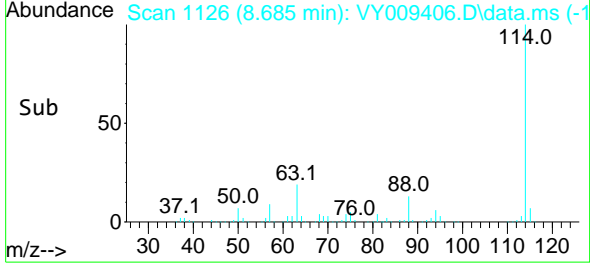
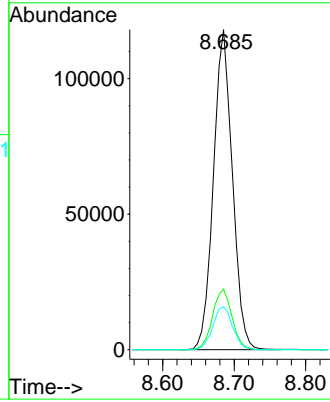


#34
 1,4-Difluorobenzene
 Concen: 50.000 ug/l
 RT: 8.685 min Scan# 1126
 Delta R.T. 0.000 min
 Lab File: VY009406.D
 Acq: 30 Jun 2022 20:17

Instrument :
 MSVOA_Y
 ClientSampleId :

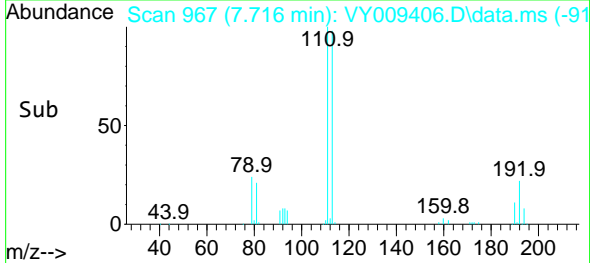
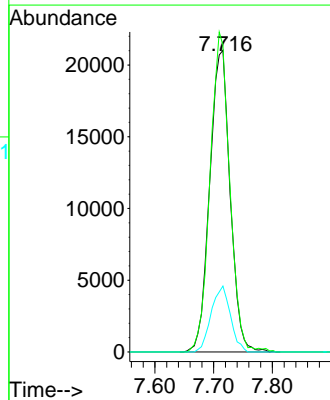
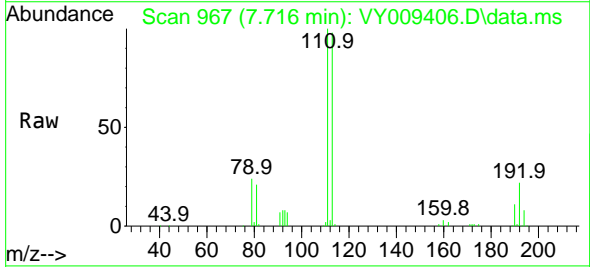


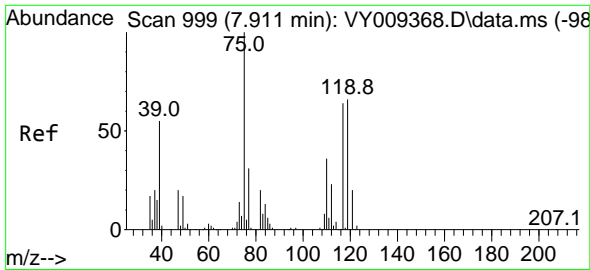
Tgt Ion:114 Resp: 217192
 Ion Ratio Lower Upper
 114 100
 63 18.9 0.0 43.2
 88 13.4 0.0 31.8



#35
 Dibromofluoromethane
 Concen: 42.544 ug/l
 RT: 7.716 min Scan# 967
 Delta R.T. 0.006 min
 Lab File: VY009406.D
 Acq: 30 Jun 2022 20:17

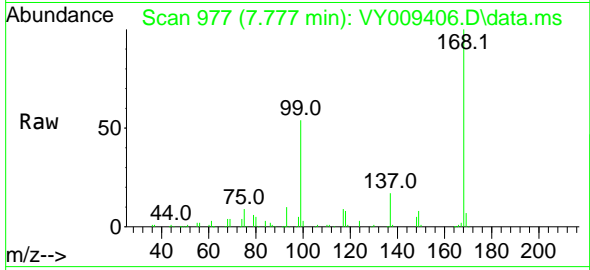
Tgt Ion:113 Resp: 50856
 Ion Ratio Lower Upper
 113 100
 111 101.9 82.6 124.0
 192 20.5 17.6 26.4



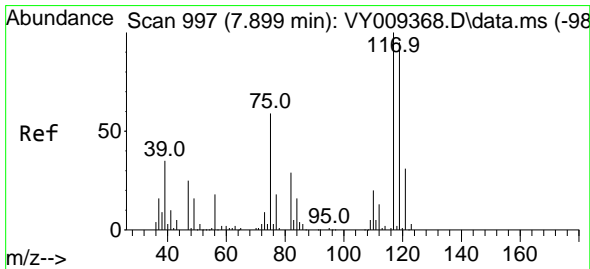
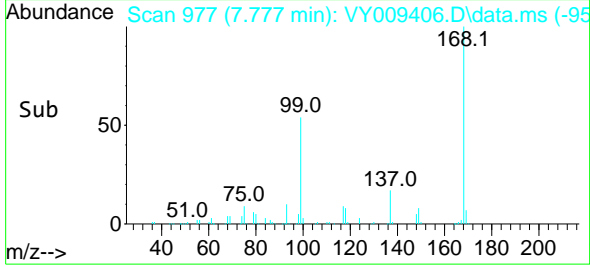
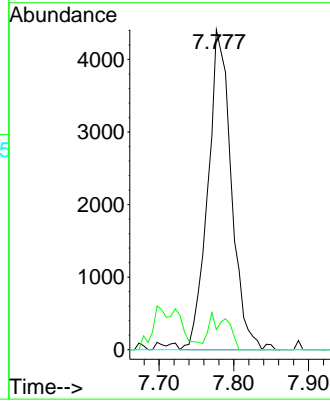


#36
 1,1-Dichloropropene
 Concen: 4.609 ug/l
 RT: 7.777 min Scan# 91
 Delta R.T. -0.134 min
 Lab File: VY009406.D
 Acq: 30 Jun 2022 20:17

Instrument :
 MSVOA_Y
 ClientSampleId :

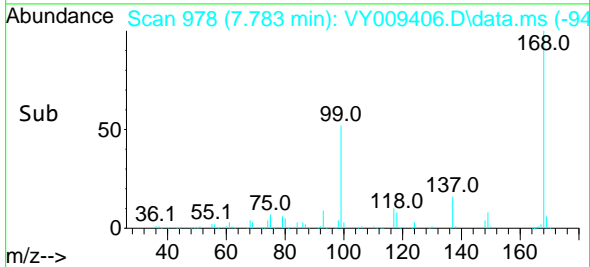
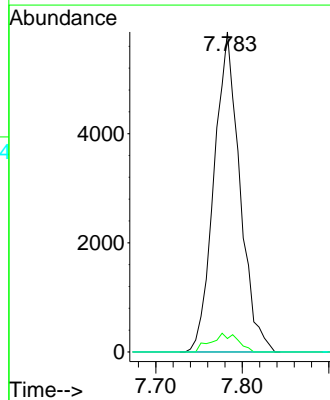
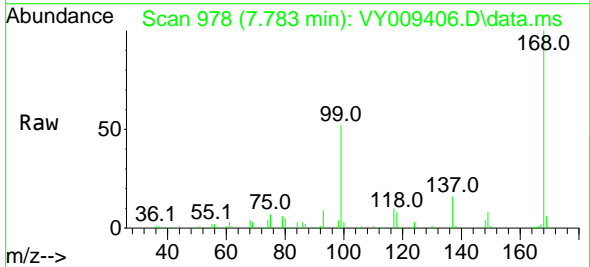


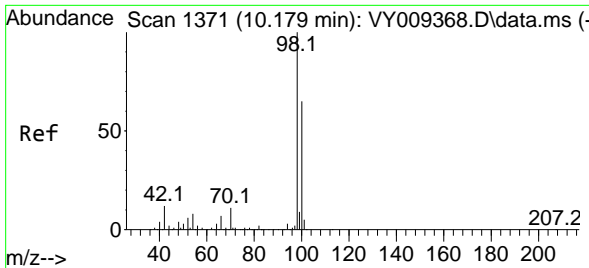
Tgt Ion: 75 Resp: 9633
 Ion Ratio Lower Upper
 75 100
 110 2.9 17.1 51.2#
 77 0.0 24.4 36.6#



#38
 Carbon Tetrachloride
 Concen: 5.548 ug/l
 RT: 7.783 min Scan# 978
 Delta R.T. -0.110 min
 Lab File: VY009406.D
 Acq: 30 Jun 2022 20:17

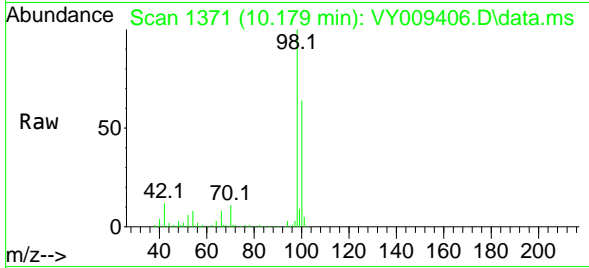
Tgt Ion: 117 Resp: 12120
 Ion Ratio Lower Upper
 117 100
 119 4.2 77.9 116.9#
 121 0.0 24.8 37.2#



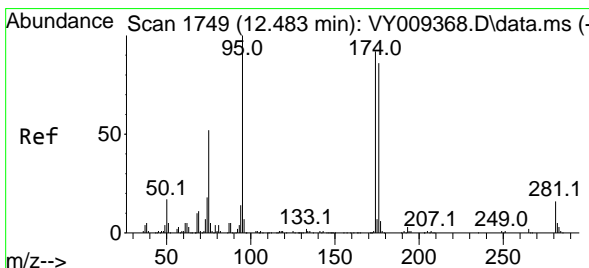
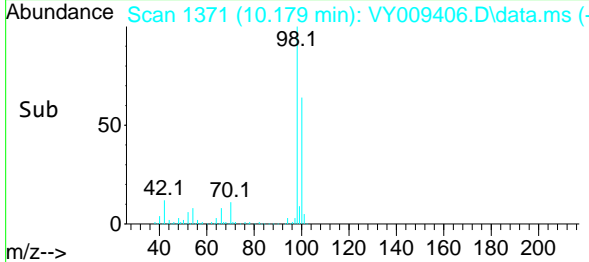
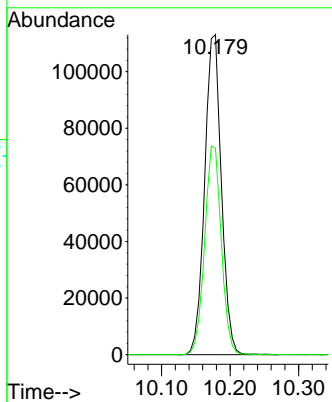


#50
 Toluene-d8
 Concen: 52.465 ug/l
 RT: 10.179 min Scan# 11
 Delta R.T. -0.000 min
 Lab File: VY009406.D
 Acq: 30 Jun 2022 20:17

Instrument :
 MSVOA_Y
 ClientSampleId :

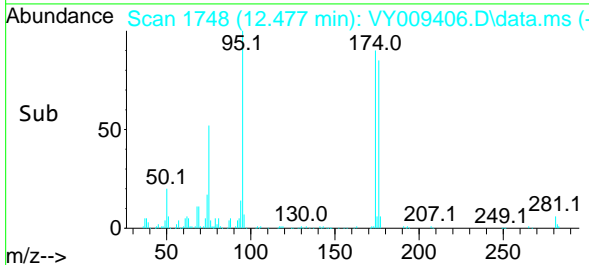
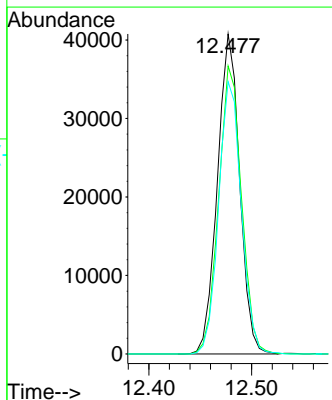
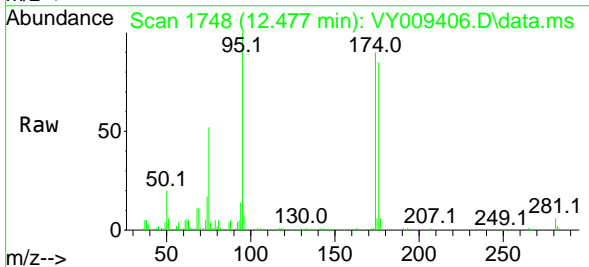


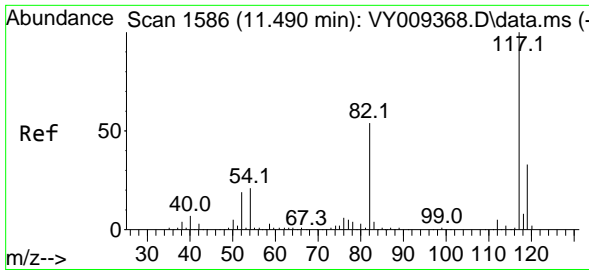
Tgt Ion: 98 Resp: 192285
 Ion Ratio Lower Upper
 98 100
 100 65.1 50.2 75.2



#62
 4-Bromofluorobenzene
 Concen: 35.141 ug/l
 RT: 12.477 min Scan# 1748
 Delta R.T. 0.000 min
 Lab File: VY009406.D
 Acq: 30 Jun 2022 20:17

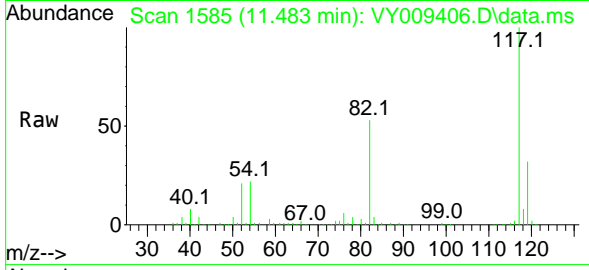
Tgt Ion: 95 Resp: 61082
 Ion Ratio Lower Upper
 95 100
 174 92.4 0.0 177.0
 176 86.8 0.0 175.8



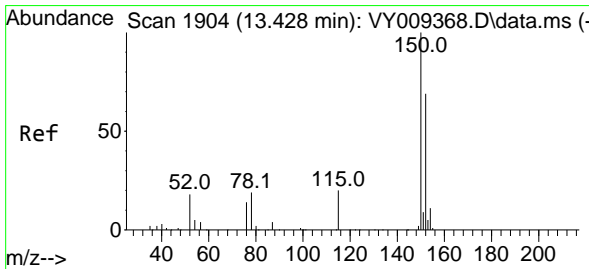
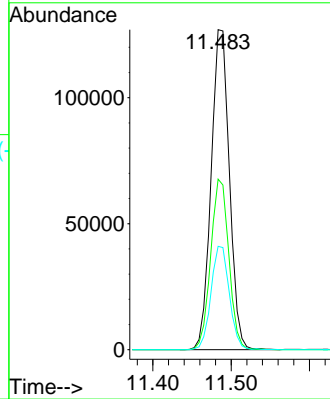
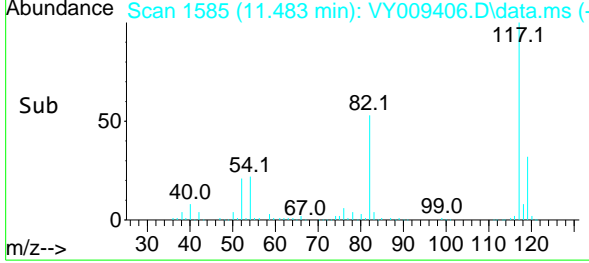


#63
 Chlorobenzene-d5
 Concen: 50.000 ug/l
 RT: 11.483 min Scan# 11
 Delta R.T. -0.007 min
 Lab File: VY009406.D
 Acq: 30 Jun 2022 20:17

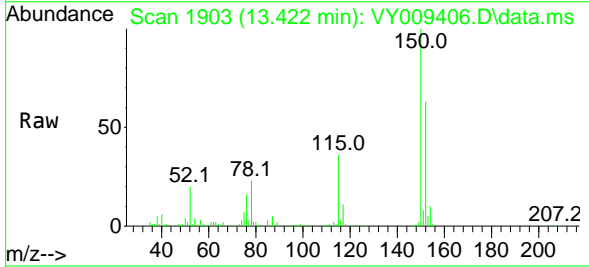
Instrument :
 MSVOA_Y
 ClientSampleId :



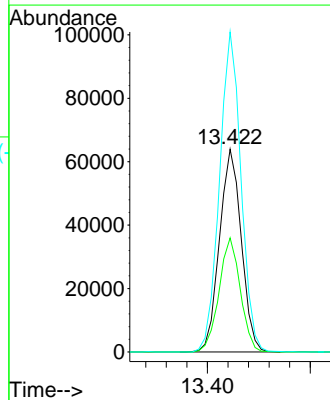
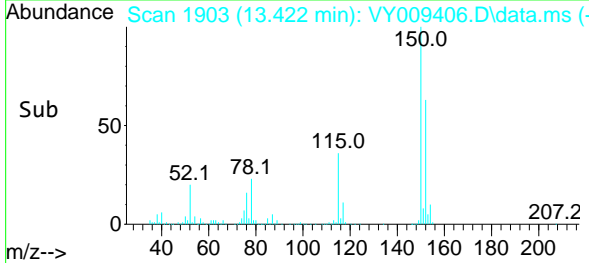
Tgt Ion:117 Resp: 205862
 Ion Ratio Lower Upper
 117 100
 82 53.3 43.0 64.4
 119 32.3 25.4 38.0

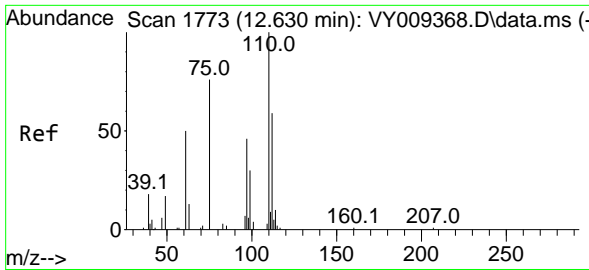


#72
 1,4-Dichlorobenzene-d4
 Concen: 50.000 ug/l
 RT: 13.422 min Scan# 1903
 Delta R.T. -0.000 min
 Lab File: VY009406.D
 Acq: 30 Jun 2022 20:17



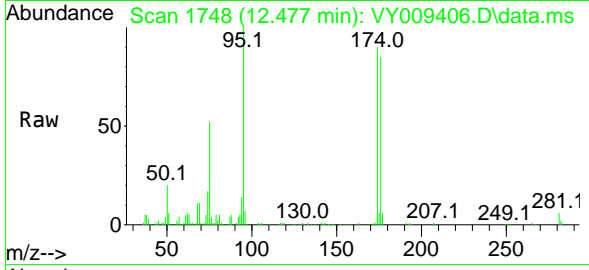
Tgt Ion:152 Resp: 94114
 Ion Ratio Lower Upper
 152 100
 115 54.8 28.2 84.7
 150 155.3 0.0 347.6



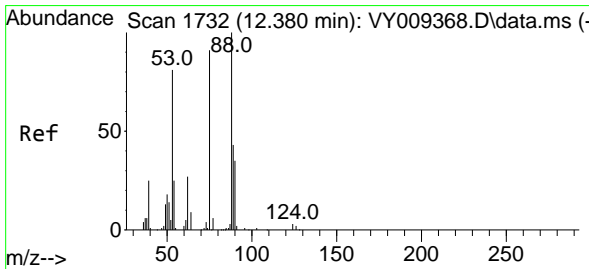
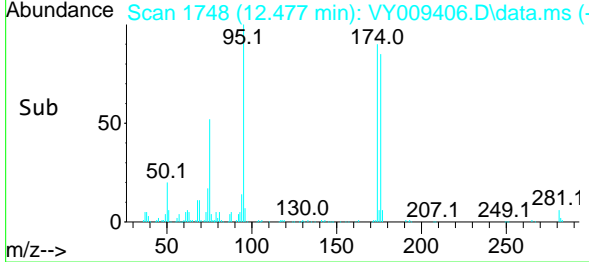
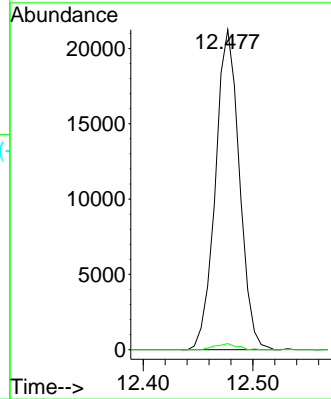


#76
 1,2,3-Trichloropropane
 Concen: 29.294 ug/l
 RT: 12.477 min Scan# 1748
 Delta R.T. -0.153 min
 Lab File: VY009406.D
 Acq: 30 Jun 2022 20:17

Instrument : MSVOA_Y
 ClientSampleId :



Tgt Ion: 75 Resp: 32286
 Ion Ratio Lower Upper
 75 100
 77 1.8 0.0 0.0#



#81
 trans-1,4-Dichloro-2-butene
 Concen: 65.222 ug/l
 RT: 12.477 min Scan# 1748
 Delta R.T. 0.103 min
 Lab File: VY009406.D
 Acq: 30 Jun 2022 20:17

Tgt Ion: 75 Resp: 32286
 Ion Ratio Lower Upper
 75 100
 53 0.1 85.3 127.9#
 89 0.0 37.0 55.4#

