

Data Path : Z:\voasrv\HPCHEM1\MSVOA\_Y\Data\VY070121\  
 Data File : VY005329.D  
 Acq On : 01 Jul 2021 21:04  
 Operator : SY/MD  
 Sample : M2793-06RE  
 Misc : 5.02G/5ML/MSVOA\_Y/SOIL  
 ALS Vial : 24 Sample Multiplier: 1

Instrument :  
 MSVOA\_Y  
 ClientSampleId :  
 SB-6RE

Quant Time: Jul 02 05:20:31 2021  
 Quant Method : Z:\voasrv\HPCHEM1\MSVOA\_Y\methods\82Y062221S.M  
 Quant Title : SW846 8260  
 QLast Update : Wed Jun 23 07:57:52 2021  
 Response via : Initial Calibration

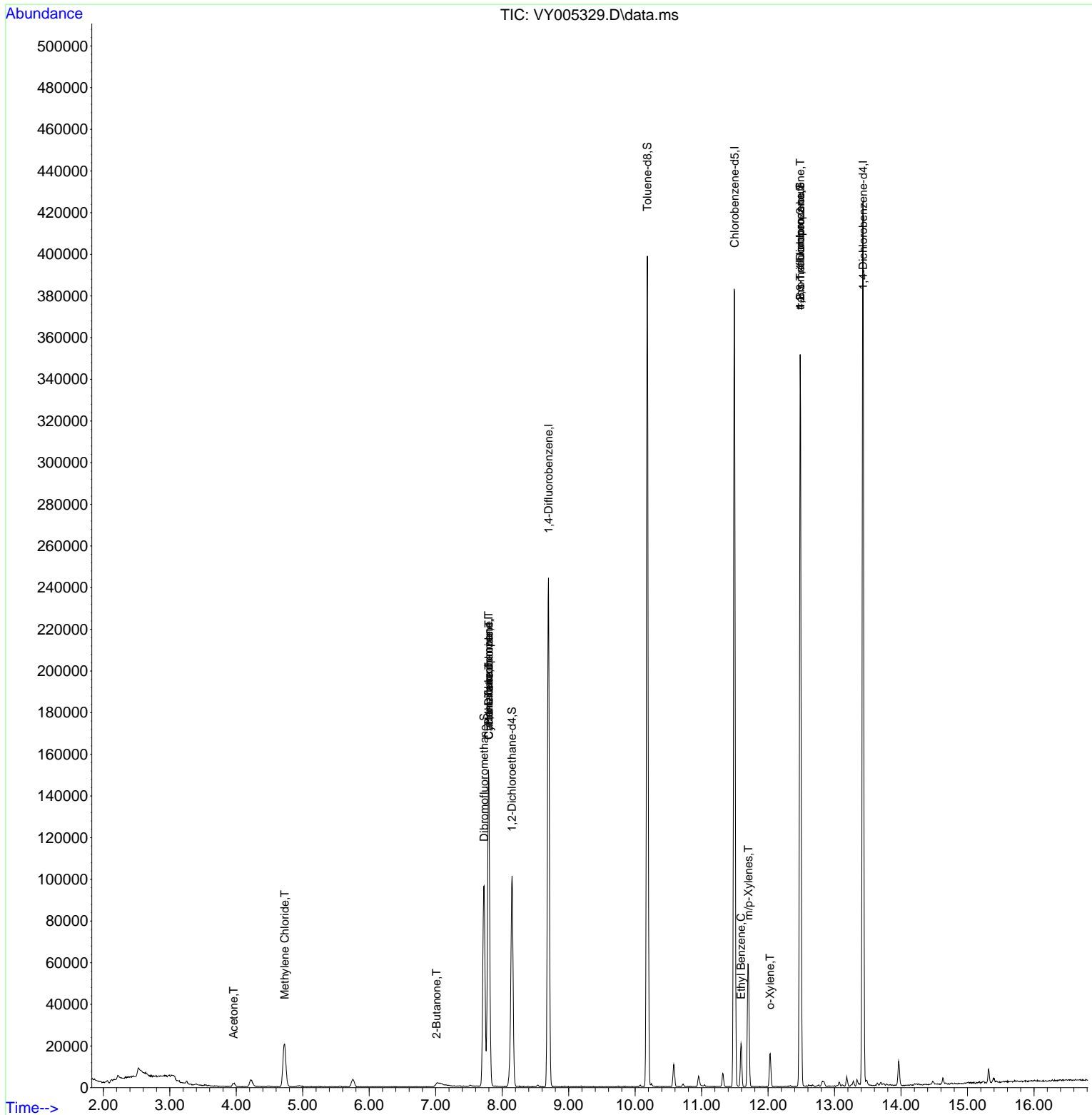
Compound	R.T.	QIon	Response	Conc	Units	Dev(Min)
-----						
Internal Standards						
1) Pentafluorobenzene	7.795	168	130502	50.000	ug/l	0.00
34) 1,4-Difluorobenzene	8.697	114	210978	50.000	ug/l	0.00
63) Chlorobenzene-d5	11.495	117	221518	50.000	ug/l	0.00
72) 1,4-Dichlorobenzene-d4	13.428	152	116509	50.000	ug/l	0.00
System Monitoring Compounds						
33) 1,2-Dichloroethane-d4	8.149	65	76634	70.762	ug/l	0.00
Spiked Amount	50.000	Range 50 - 163	Recovery	=	141.520%	
35) Dibromofluoromethane	7.728	113	67853	54.533	ug/l	0.00
Spiked Amount	50.000	Range 54 - 147	Recovery	=	109.060%	
50) Toluene-d8	10.185	98	264603	53.177	ug/l	0.00
Spiked Amount	50.000	Range 49 - 140	Recovery	=	106.360%	
62) 4-Bromofluorobenzene	12.483	95	96275	58.063	ug/l	0.00
Spiked Amount	50.000	Range 25 - 144	Recovery	=	116.120%	
Target Compounds						
					Qvalue	
11) Tert butyl alcohol	4.960	59	976	Below Cal	#	77
16) Acetone	3.960	43	3034	12.127	ug/l	95
20) Methylene Chloride	4.728	84	16010	4.006	ug/l	93
25) 2-Butanone	7.015	43	372	1.020	ug/l	# 43
31) Cyclohexane	7.801	56	2396	1.239	ug/l	# 1
36) 1,1-Dichloropropene	7.795	75	8404	4.524	ug/l	# 48
38) Carbon Tetrachloride	7.801	117	11031	5.672	ug/l	# 15
67) Ethyl Benzene	11.593	91	13646	1.802	ug/l	99
68) m/p-Xylenes	11.703	106	19304	6.364	ug/l	99
69) o-Xylene	12.032	106	4336	1.510	ug/l	94
76) 1,2,3-Trichloropropane	12.483	75	47251	45.728	ug/l	# 100
81) trans-1,4-Dichloro-2-b...	12.483	75	47251	85.318	ug/l	# 17
-----						

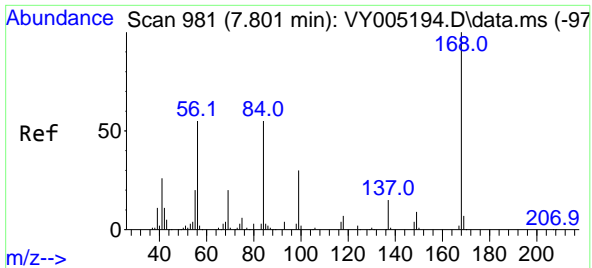
(#) = qualifier out of range (m) = manual integration (+) = signals summed

Data Path : Z:\voasrv\HPCHEM1\MSVOA\_Y\Data\VY070121\  
 Data File : VY005329.D  
 Acq On : 01 Jul 2021 21:04  
 Operator : SY/MD  
 Sample : M2793-06RE  
 Misc : 5.02G/5ML/MSVOA\_Y/SOIL  
 ALS Vial : 24 Sample Multiplier: 1

Instrument :  
 MSVOA\_Y  
 ClientSampled :  
 SB-6RE

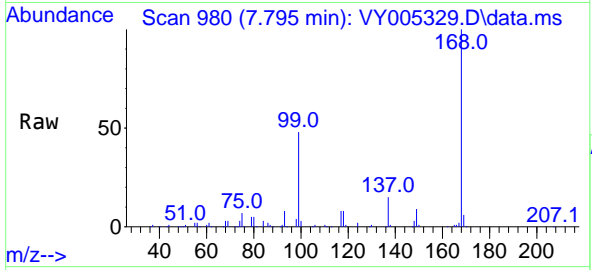
Quant Time: Jul 02 05:20:31 2021  
 Quant Method : Z:\voasrv\HPCHEM1\MSVOA\_Y\methods\82Y062221S.M  
 Quant Title : SW846 8260  
 QLast Update : Wed Jun 23 07:57:52 2021  
 Response via : Initial Calibration



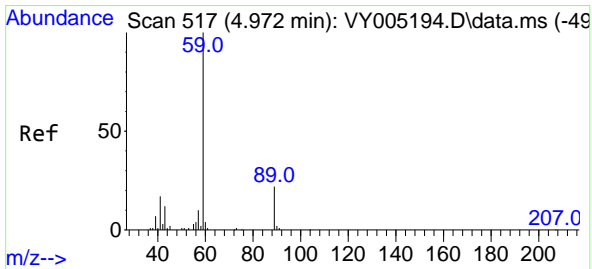
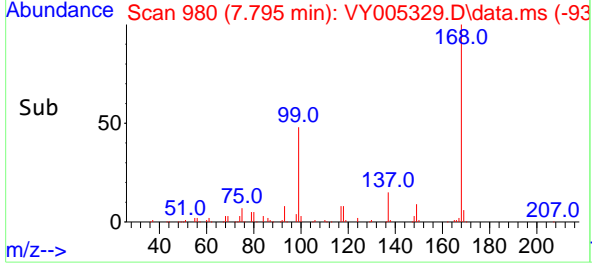
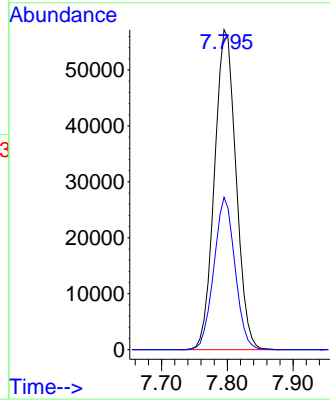


#1  
 Pentafluorobenzene  
 Concen: 50.000 ug/l  
 RT: 7.795 min Scan# 980  
 Delta R.T. -0.006 min  
 Lab File: VY005329.D  
 Acq: 01 Jul 2021 21:04

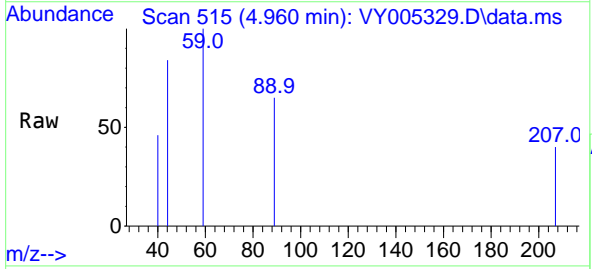
Instrument :  
 MSVOA\_Y  
 ClientSampled :  
 SB-6RE



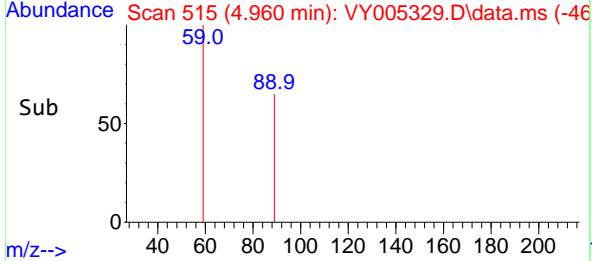
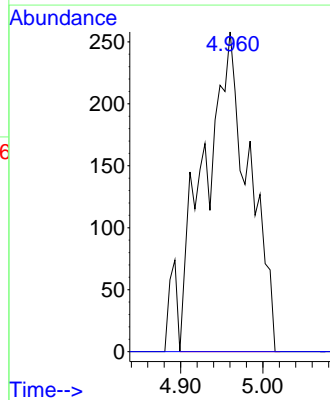
Tgt Ion:168 Resp: 130502  
 Ion Ratio Lower Upper  
 168 100  
 99 47.6 36.2 54.4

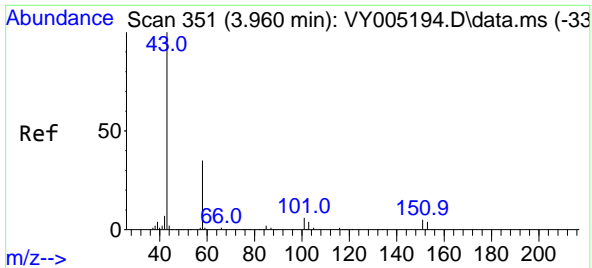


#11  
 Tert butyl alcohol  
 Concen: Below Cal  
 RT: 4.960 min Scan# 515  
 Delta R.T. -0.012 min  
 Lab File: VY005329.D  
 Acq: 01 Jul 2021 21:04



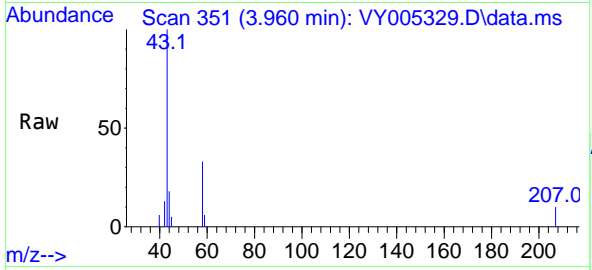
Tgt Ion: 59 Resp: 976  
 Ion Ratio Lower Upper  
 59 100  
 57 0.0 6.5 9.7#



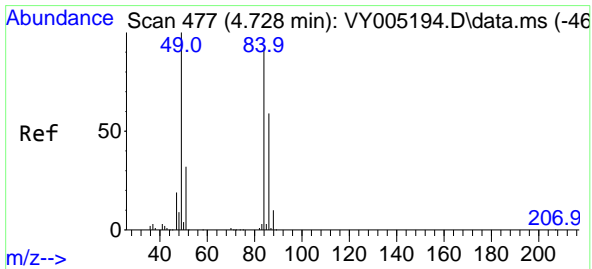
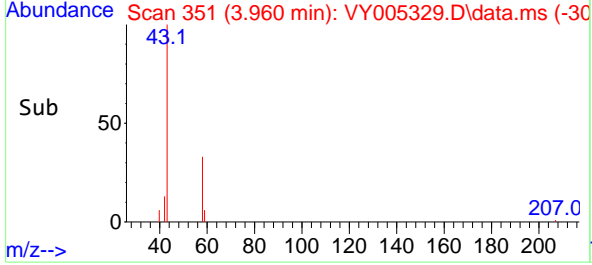
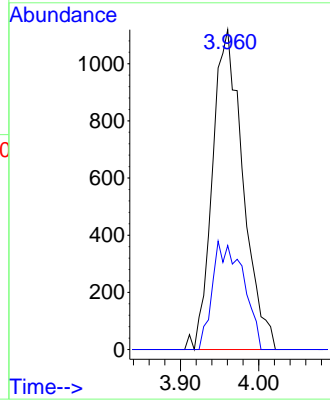


#16  
 Acetone  
 Concen: 12.127 ug/l  
 RT: 3.960 min Scan# 351  
 Delta R.T. -0.000 min  
 Lab File: VY005329.D  
 Acq: 01 Jul 2021 21:04

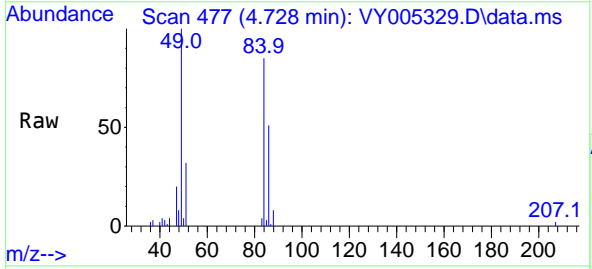
Instrument :  
 MSVOA\_Y  
 ClientSampled :  
 SB-6RE



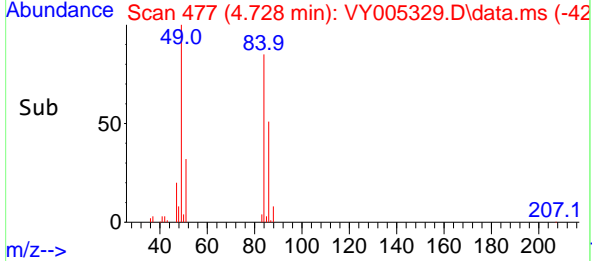
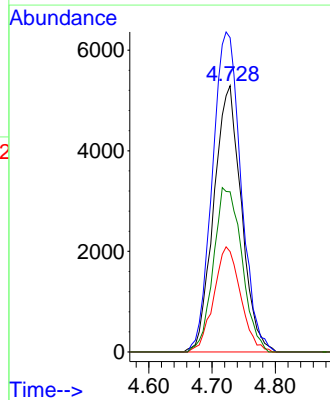
Tgt Ion: 43 Resp: 3034  
 Ion Ratio Lower Upper  
 43 100  
 58 32.5 28.2 42.2

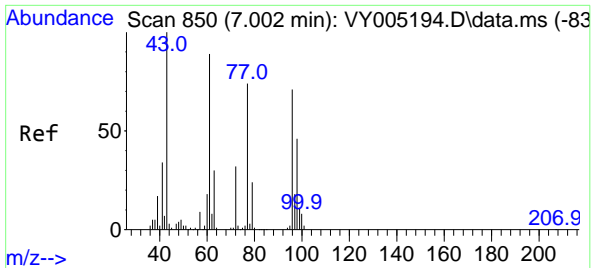


#20  
 Methylene Chloride  
 Concen: 4.006 ug/l  
 RT: 4.728 min Scan# 477  
 Delta R.T. 0.000 min  
 Lab File: VY005329.D  
 Acq: 01 Jul 2021 21:04



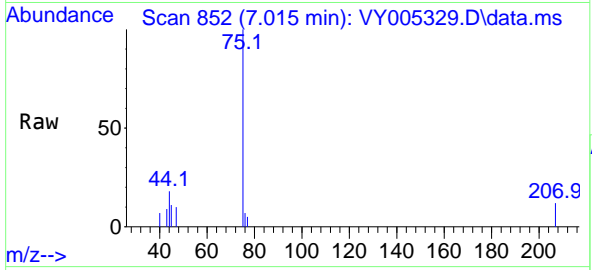
Tgt Ion: 84 Resp: 16010  
 Ion Ratio Lower Upper  
 84 100  
 49 118.0 86.9 130.3  
 51 37.7 27.4 41.2  
 86 60.2 51.0 76.6



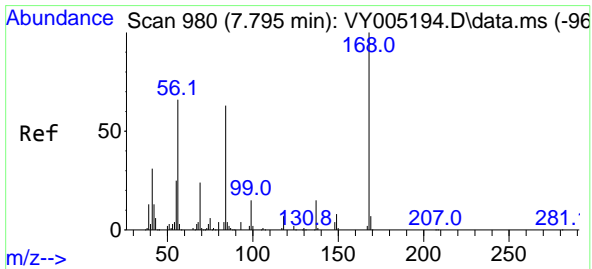
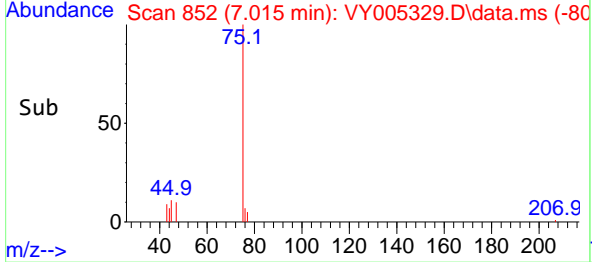
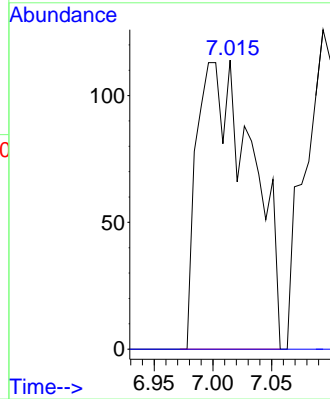


#25  
 2-Butanone  
 Concen: 1.020 ug/l  
 RT: 7.015 min Scan# 852  
 Delta R.T. 0.012 min  
 Lab File: VY005329.D  
 Acq: 01 Jul 2021 21:04

Instrument :  
 MSVOA\_Y  
 ClientSampled :  
 SB-6RE

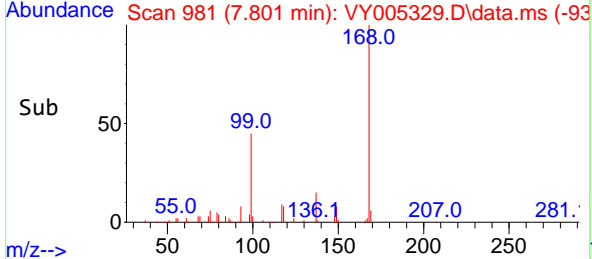
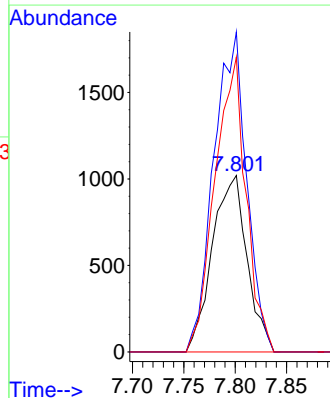
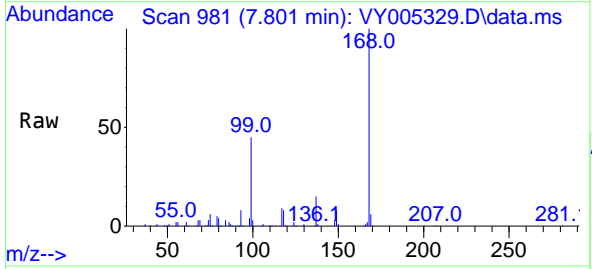


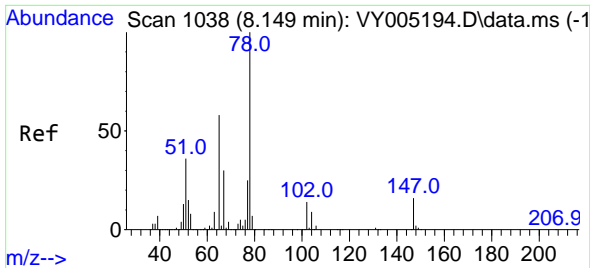
Tgt Ion: 43 Resp: 372  
 Ion Ratio Lower Upper  
 43 100  
 72 0.0 25.3 37.9#



#31  
 Cyclohexane  
 Concen: 1.239 ug/l  
 RT: 7.801 min Scan# 981  
 Delta R.T. 0.006 min  
 Lab File: VY005329.D  
 Acq: 01 Jul 2021 21:04

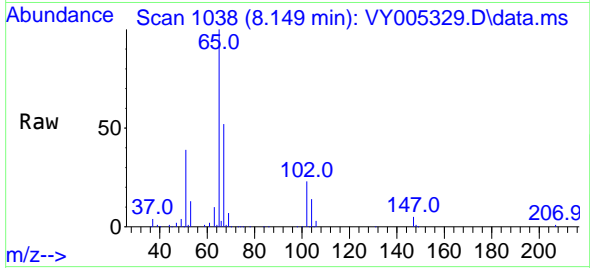
Tgt Ion: 56 Resp: 2396  
 Ion Ratio Lower Upper  
 56 100  
 69 181.4 29.6 44.4#  
 84 167.2 76.4 114.6#



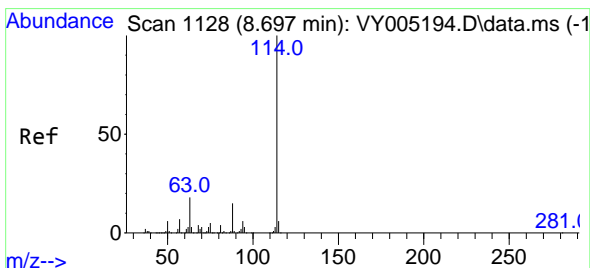
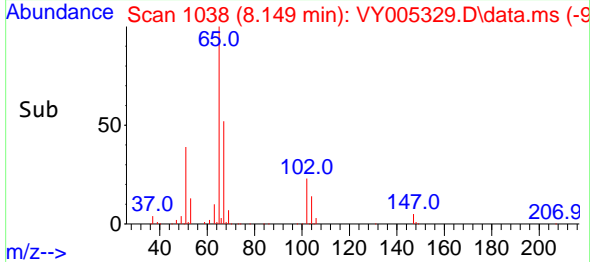
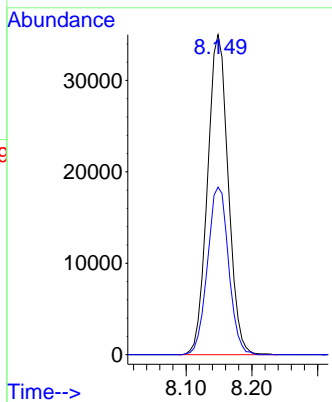


#33  
 1,2-Dichloroethane-d4  
 Concen: 70.762 ug/l  
 RT: 8.149 min Scan# 1038  
 Delta R.T. -0.000 min  
 Lab File: VY005329.D  
 Acq: 01 Jul 2021 21:04

Instrument :  
 MSVOA\_Y  
 ClientSampled :  
 SB-6RE

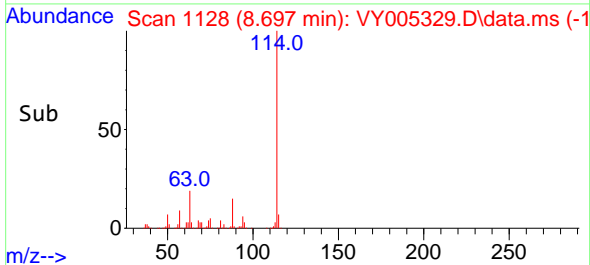
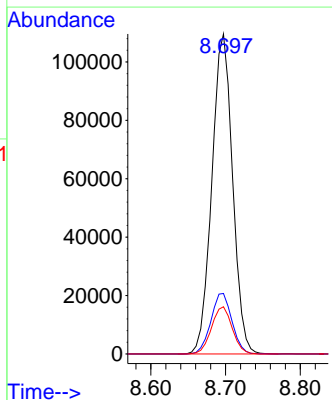
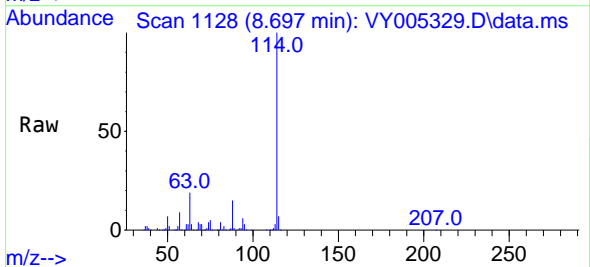


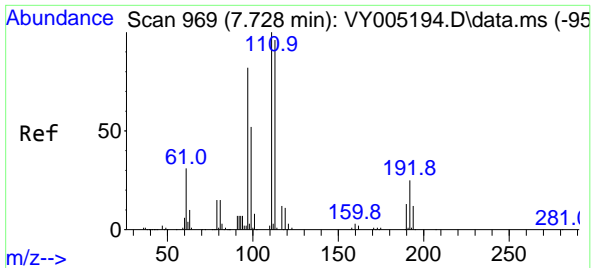
Tgt Ion: 65 Resp: 76634  
 Ion Ratio Lower Upper  
 65 100  
 67 53.4 0.0 110.6



#34  
 1,4-Difluorobenzene  
 Concen: 50.000 ug/l  
 RT: 8.697 min Scan# 1128  
 Delta R.T. -0.000 min  
 Lab File: VY005329.D  
 Acq: 01 Jul 2021 21:04

Tgt Ion: 114 Resp: 210978  
 Ion Ratio Lower Upper  
 114 100  
 63 18.9 0.0 35.2  
 88 14.8 0.0 29.4



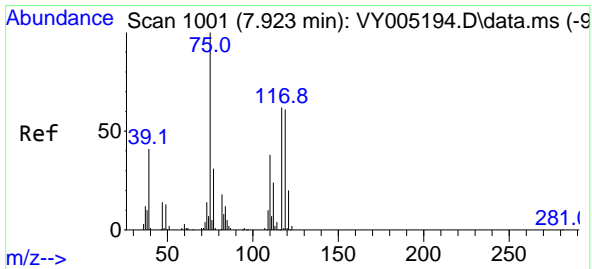
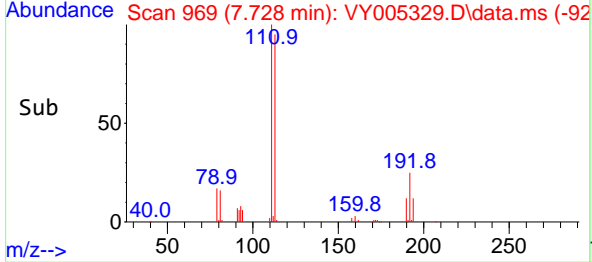
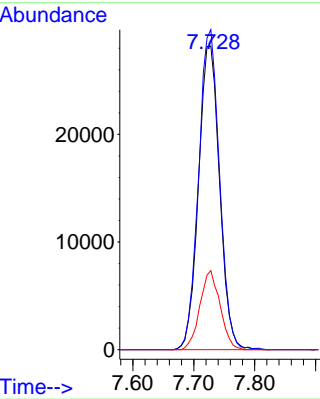
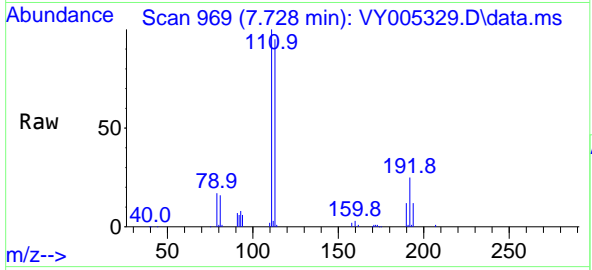


#35  
 Dibromofluoromethane  
 Concen: 54.533 ug/l  
 RT: 7.728 min Scan# 969  
 Delta R.T. -0.000 min  
 Lab File: VY005329.D  
 Acq: 01 Jul 2021 21:04

Instrument :  
 MSVOA\_Y  
 ClientSampled :  
 SB-6RE

Tgt Ion:113 Resp: 67853

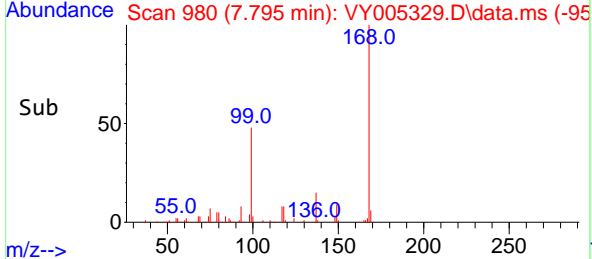
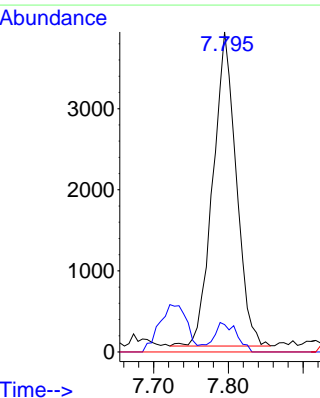
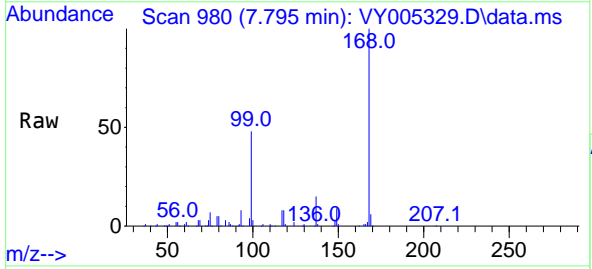
Ion	Ratio	Lower	Upper
113	100		
111	104.7	82.6	124.0
192	24.9	20.2	30.2

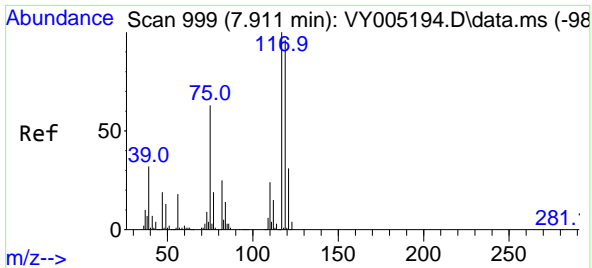


#36  
 1,1-Dichloropropene  
 Concen: 4.524 ug/l  
 RT: 7.795 min Scan# 980  
 Delta R.T. -0.128 min  
 Lab File: VY005329.D  
 Acq: 01 Jul 2021 21:04

Tgt Ion: 75 Resp: 8404

Ion	Ratio	Lower	Upper
75	100		
110	8.7	19.1	57.5#
77	0.0	25.2	37.8#



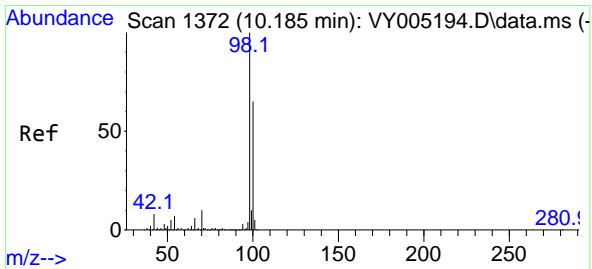
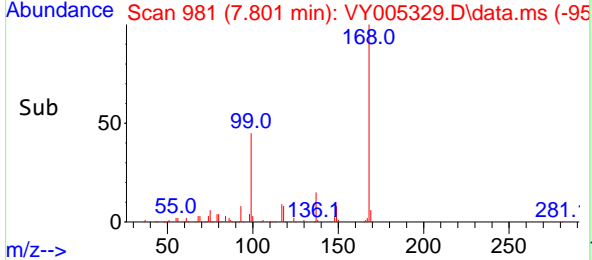
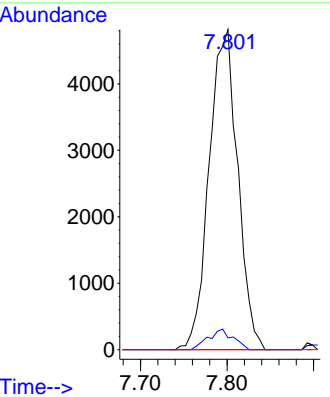
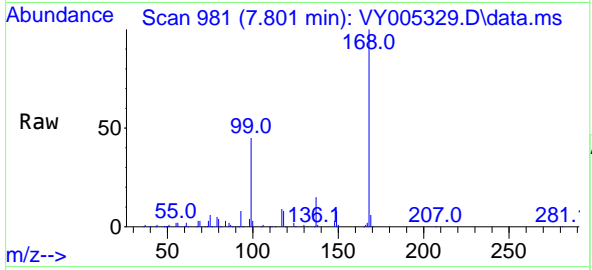


#38  
 Carbon Tetrachloride  
 Concen: 5.672 ug/l  
 RT: 7.801 min Scan# 981  
 Delta R.T. -0.110 min  
 Lab File: VY005329.D  
 Acq: 01 Jul 2021 21:04

**Instrument :**  
 MSVOA\_Y  
**ClientSampled :**  
 SB-6RE

Tgt Ion:117 Resp: 11031

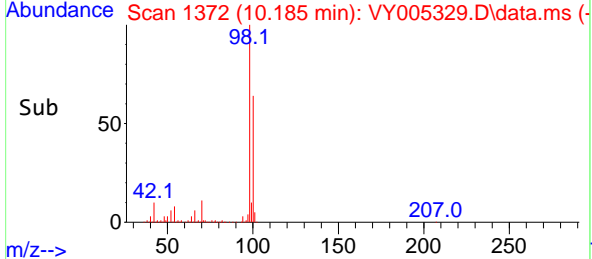
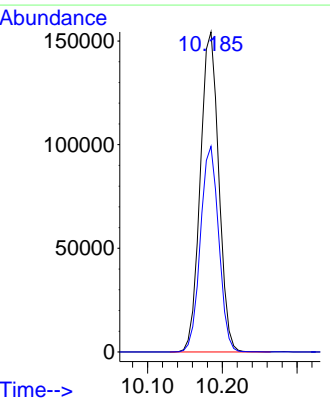
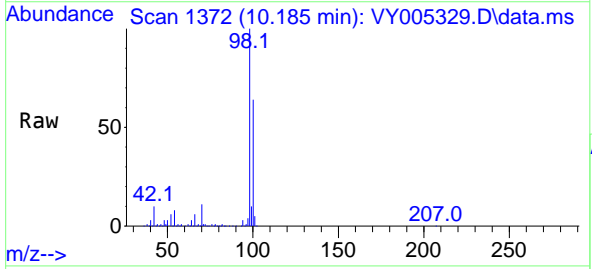
Ion	Ratio	Lower	Upper
117	100		
119	3.7	76.2	114.4#
121	0.0	24.7	37.1#



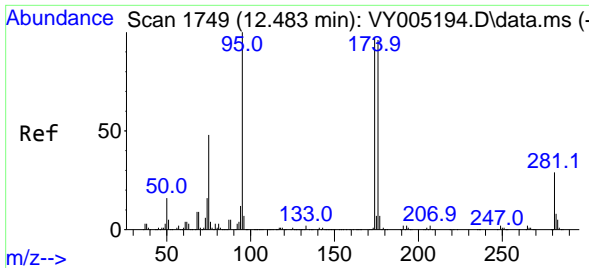
#50  
 Toluene-d8  
 Concen: 53.177 ug/l  
 RT: 10.185 min Scan# 1372  
 Delta R.T. -0.000 min  
 Lab File: VY005329.D  
 Acq: 01 Jul 2021 21:04

Tgt Ion: 98 Resp: 264603

Ion	Ratio	Lower	Upper
98	100		
100	63.7	51.9	77.9

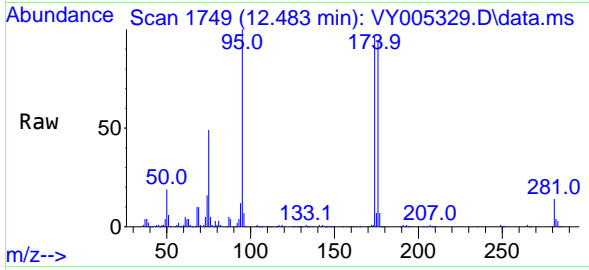






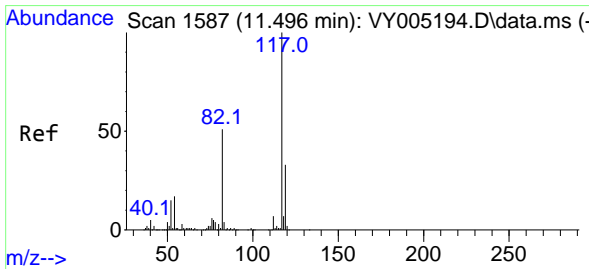
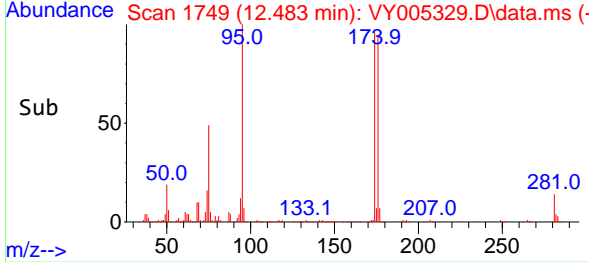
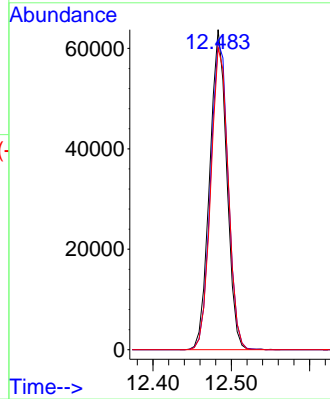
#62  
 4-Bromofluorobenzene  
 Concen: 58.063 ug/l  
 RT: 12.483 min Scan# 1749  
 Delta R.T. -0.000 min  
 Lab File: VY005329.D  
 Acq: 01 Jul 2021 21:04

**Instrument :**  
 MSVOA\_Y  
**ClientSampleId :**  
 SB-6RE

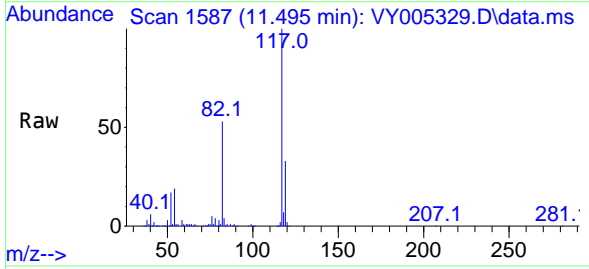


Tgt Ion: 95 Resp: 96275

Ion	Ratio	Lower	Upper
95	100		
174	99.0	0.0	201.6
176	96.3	0.0	197.4

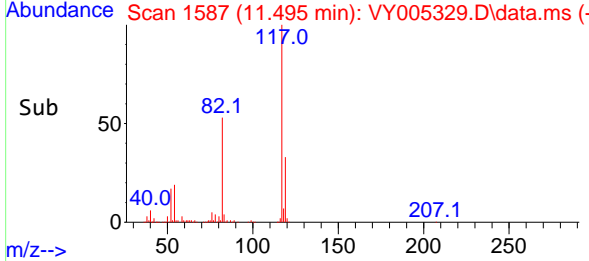
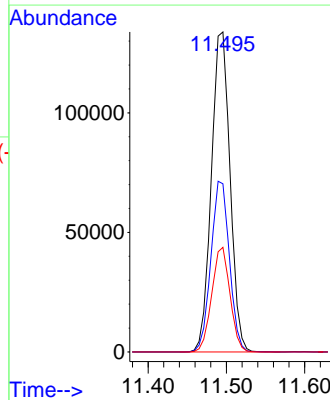


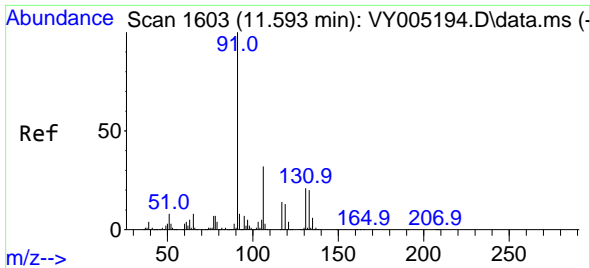
#63  
 Chlorobenzene-d5  
 Concen: 50.000 ug/l  
 RT: 11.495 min Scan# 1587  
 Delta R.T. -0.000 min  
 Lab File: VY005329.D  
 Acq: 01 Jul 2021 21:04



Tgt Ion: 117 Resp: 221518

Ion	Ratio	Lower	Upper
117	100		
82	52.6	40.6	60.8
119	32.7	26.1	39.1

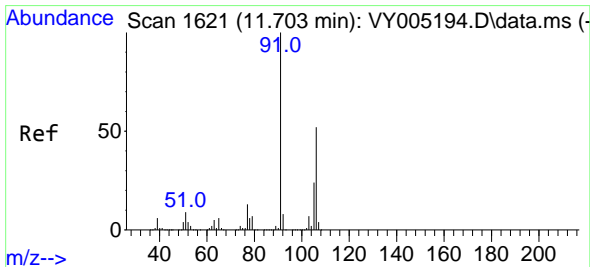
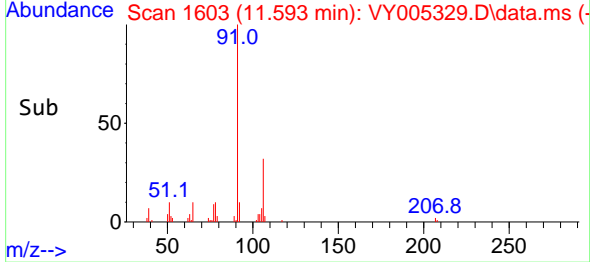
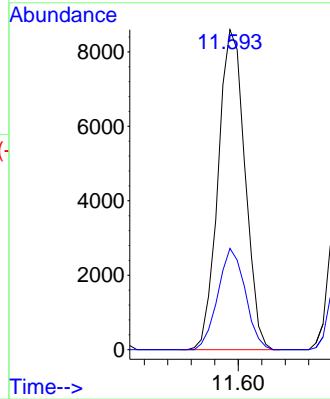
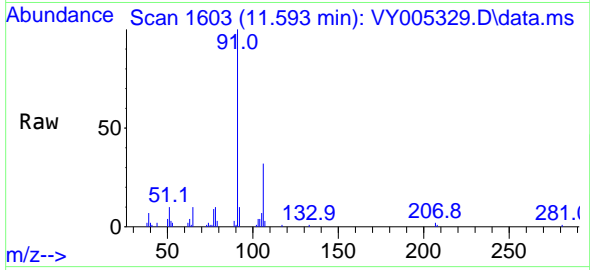




#67  
 Ethyl Benzene  
 Concen: 1.802 ug/l  
 RT: 11.593 min Scan# 1603  
 Delta R.T. -0.000 min  
 Lab File: VY005329.D  
 Acq: 01 Jul 2021 21:04

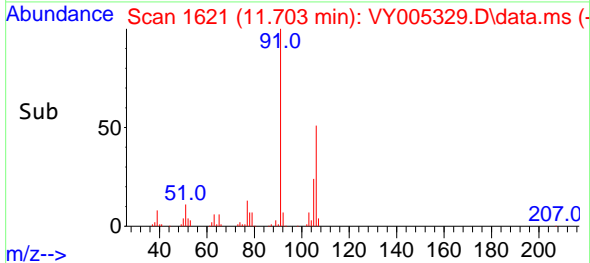
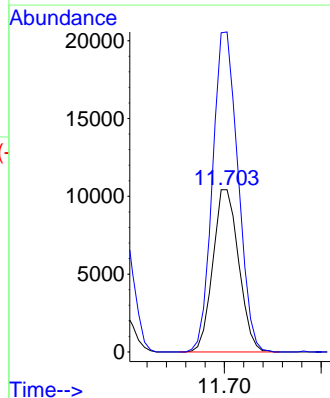
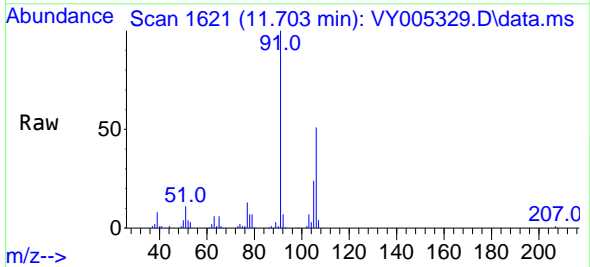
Instrument :  
 MSVOA\_Y  
 ClientSampled :  
 SB-6RE

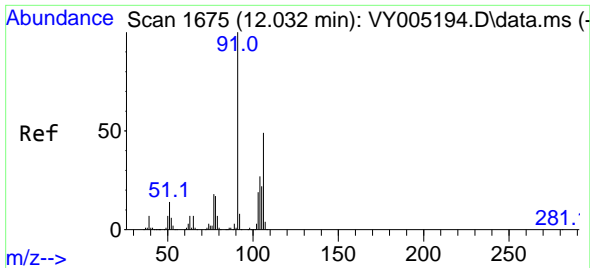
Tgt Ion: 91 Resp: 13646  
 Ion Ratio Lower Upper  
 91 100  
 106 31.7 25.8 38.6



#68  
 m/p-Xylenes  
 Concen: 6.364 ug/l  
 RT: 11.703 min Scan# 1621  
 Delta R.T. -0.000 min  
 Lab File: VY005329.D  
 Acq: 01 Jul 2021 21:04

Tgt Ion: 106 Resp: 19304  
 Ion Ratio Lower Upper  
 106 100  
 91 194.5 154.8 232.2

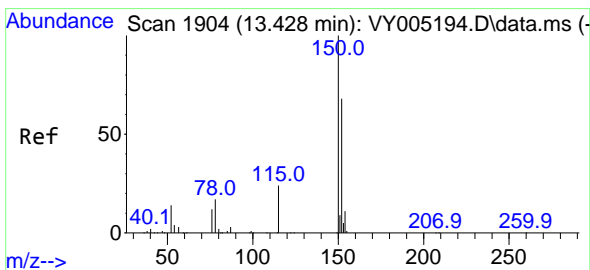
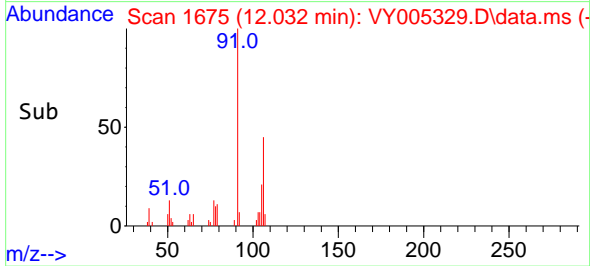
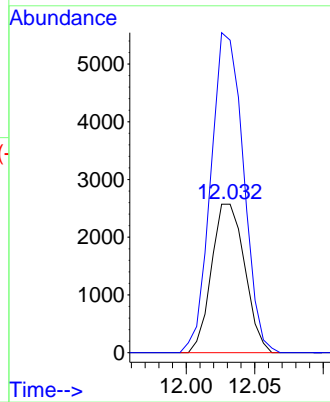
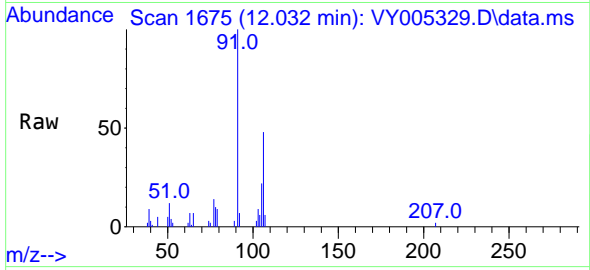




#69  
 o-Xylene  
 Concen: 1.510 ug/l  
 RT: 12.032 min Scan# 1675  
 Delta R.T. -0.000 min  
 Lab File: VY005329.D  
 Acq: 01 Jul 2021 21:04

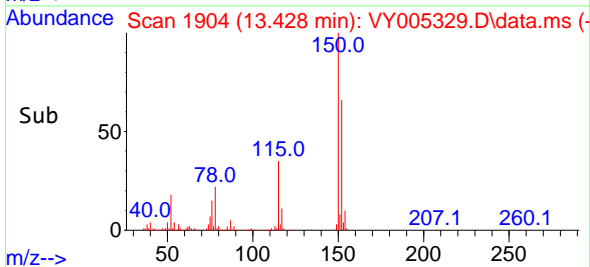
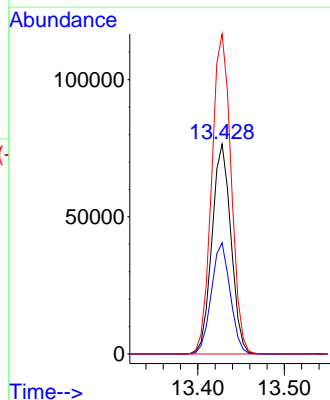
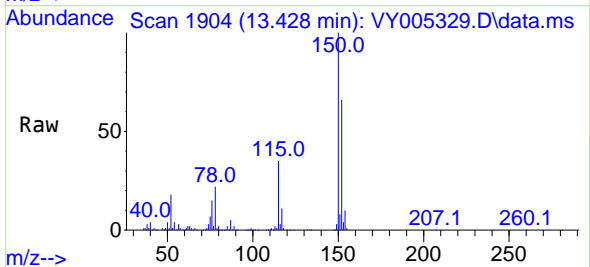
Instrument :  
 MSVOA\_Y  
 ClientSampled :  
 SB-6RE

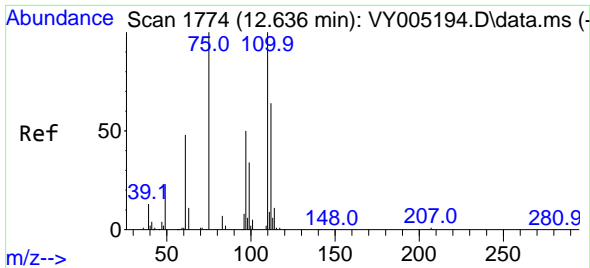
Tgt Ion:106 Resp: 4336  
 Ion Ratio Lower Upper  
 106 100  
 91 211.6 101.6 304.8



#72  
 1,4-Dichlorobenzene-d4  
 Concen: 50.000 ug/l  
 RT: 13.428 min Scan# 1904  
 Delta R.T. -0.000 min  
 Lab File: VY005329.D  
 Acq: 01 Jul 2021 21:04

Tgt Ion:152 Resp: 116509  
 Ion Ratio Lower Upper  
 152 100  
 115 52.7 26.3 78.8  
 150 156.1 0.0 344.2

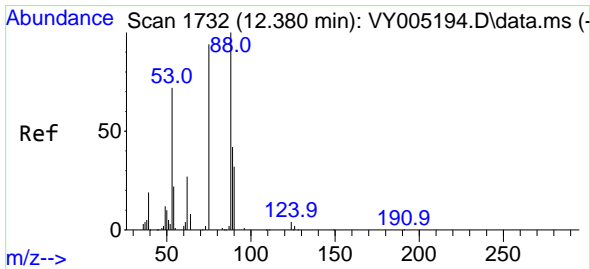
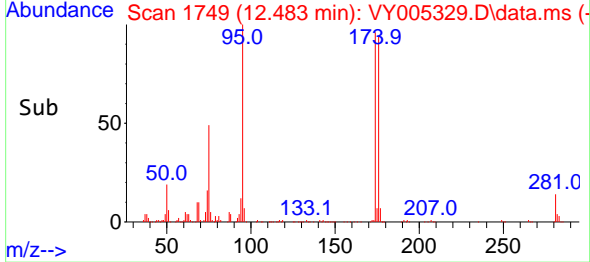
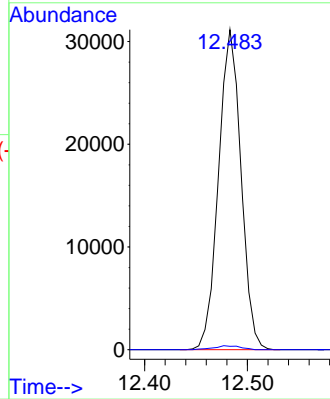
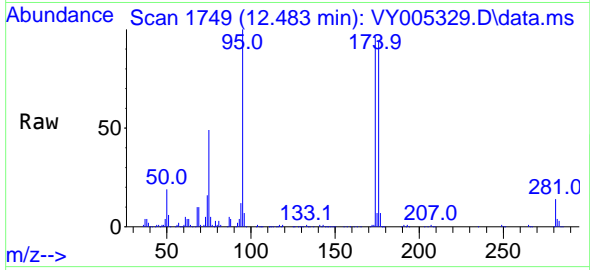




#76  
 1,2,3-Trichloropropane  
 Concen: 45.728 ug/l  
 RT: 12.483 min Scan# 1749  
 Delta R.T. -0.152 min  
 Lab File: VY005329.D  
 Acq: 01 Jul 2021 21:04

Instrument :  
 MSVOA\_Y  
 ClientSampled :  
 SB-6RE

Tgt Ion: 75 Resp: 47251  
 Ion Ratio Lower Upper  
 75 100  
 77 1.4 0.0 0.0#



#81  
 trans-1,4-Dichloro-2-butene  
 Concen: 85.318 ug/l  
 RT: 12.483 min Scan# 1749  
 Delta R.T. 0.104 min  
 Lab File: VY005329.D  
 Acq: 01 Jul 2021 21:04

Tgt Ion: 75 Resp: 47251  
 Ion Ratio Lower Upper  
 75 100  
 53 0.0 63.0 94.4#  
 89 0.1 38.0 57.0#

