

Data Path : Z:\voasrv\HPCHEM1\MSVOA_Y\Data\VY070121\
 Data File : VY005319.D
 Acq On : 01 Jul 2021 17:12
 Operator : SY/MD
 Sample : M2904-04
 Misc : 5.41G/5ML/MSVOA_Y/SOIL
 ALS Vial : 14 Sample Multiplier: 1

Instrument :
 MSVOA_Y
 ClientSampleId :
 COMP-3

Integration Parameters: RTEINT.P

Integrator: RTE
 Smoothing : ON Filtering: 5
 Sampling : 1 Min Area: 3 % of largest Peak
 Start Thrs: 0.2 Max Peaks: 100
 Stop Thrs : 0 Peak Location: TOP

If leading or trailing edge < 100 prefer < Baseline drop else tangent >
 Peak separation: 5

Method : Z:\voasrv\HPCHEM1\MSVOA_Y\methods\82Y062221S.M
 Title : SW846 8260

Signal : TIC: VY005319.D\data.ms

peak #	R.T. min	first scan	max scan	last scan	PK TY	peak height	corr. area	corr. % max.	% of total
1	4.222	385	394	407	rBV2	5827	20157	1.72%	0.290%
2	4.728	465	477	491	rBV2	36360	116754	9.94%	1.681%
3	5.753	636	645	658	rVB3	4617	14975	1.27%	0.216%
4	7.033	843	855	857	rBV3	4417	12897	1.10%	0.186%
5	7.728	955	969	974	rBV	162185	382918	32.59%	5.512%
6	7.795	974	980	993	rVB	270704	597568	50.86%	8.602%
7	8.149	1023	1038	1050	rVB2	176746	472706	40.23%	6.805%
8	8.697	1119	1128	1143	rBV	414708	818765	69.68%	11.786%
9	10.185	1364	1372	1380	rBV	696890	1174962	100.00%	16.913%
10	10.581	1429	1437	1445	rVB	22795	41449	3.53%	0.597%
11	10.953	1493	1498	1508	rBV	8314	17449	1.49%	0.251%
12	11.319	1553	1558	1565	rVB2	13824	23187	1.97%	0.334%
13	11.496	1579	1587	1598	rVB	656349	1076673	91.63%	15.499%
14	12.483	1741	1749	1757	rBV2	601879	958830	81.61%	13.802%
15	12.837	1798	1807	1813	rBV6	4915	12059	1.03%	0.174%
16	13.184	1858	1864	1871	rBV2	7723	12682	1.08%	0.183%
17	13.282	1871	1880	1885	rBV2	8913	16164	1.38%	0.233%
18	13.343	1885	1890	1895	rVB2	9367	14893	1.27%	0.214%
19	13.428	1895	1904	1910	rBV	748898	1121504	95.45%	16.144%
20	13.483	1910	1913	1920	rVB3	7948	15823	1.35%	0.228%
21	13.965	1987	1992	2000	rVB	14577	24520	2.09%	0.353%

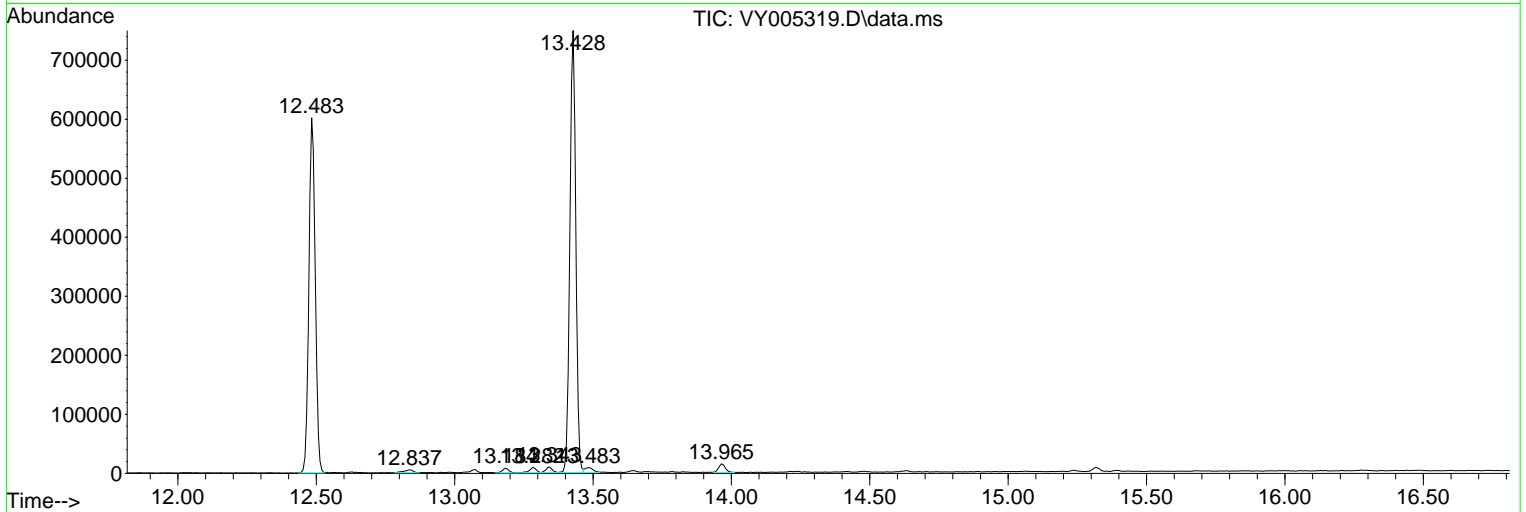
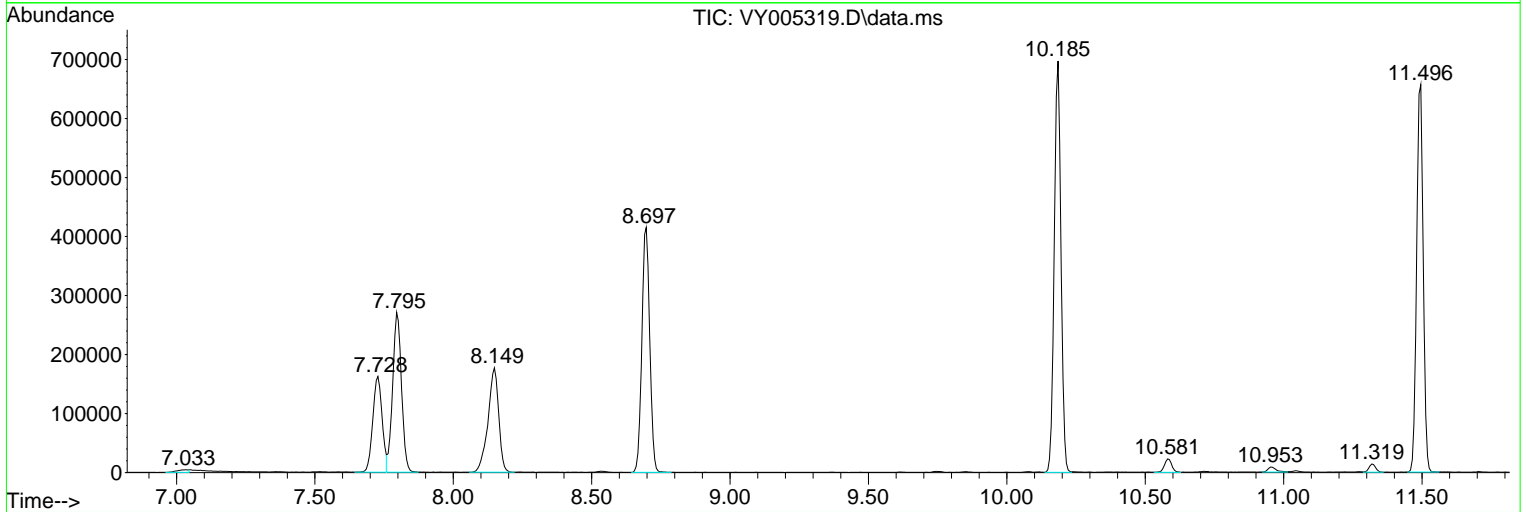
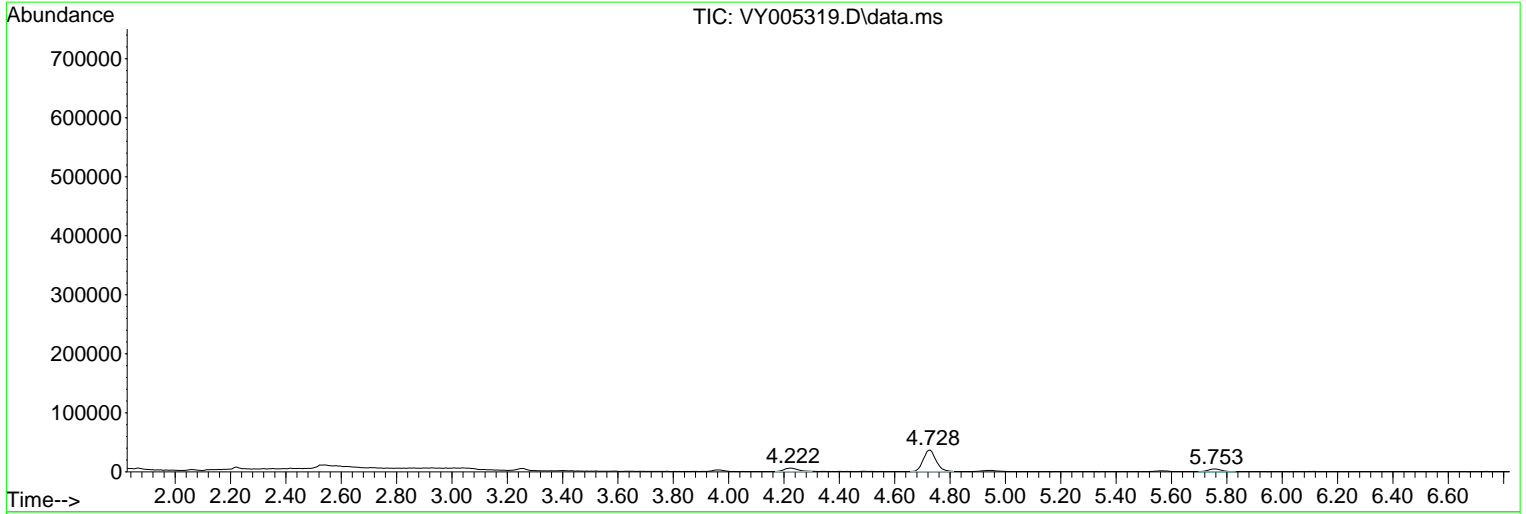
Sum of corrected areas: 6946935

Data Path : Z:\voasrv\HPCHEM1\MSVOA_Y\Data\VY070121\
 Data File : VY005319.D
 Acq On : 01 Jul 2021 17:12
 Operator : SY/MD
 Sample : M2904-04
 Misc : 5.41G/5ML/MSVOA_Y/SOIL
 ALS Vial : 14 Sample Multiplier: 1

Instrument :
 MSVOA_Y
 ClientSampleId :
 COMP-3

Quant Method : Z:\voasrv\HPCHEM1\MSVOA_Y\methods\82Y062221S.M
 Quant Title : SW846 8260

TIC Library : C:\DATABASE\NIST11.L
 TIC Integration Parameters: LSCINT.P



Data Path : Z:\voasrv\HPCHEM1\MSVOA_Y\Data\VY070121\
Data File : VY005319.D
Acq On : 01 Jul 2021 17:12
Operator : SY/MD
Sample : M2904-04
Misc : 5.41G/5ML/MSVOA_Y/SOIL
ALS Vial : 14 Sample Multiplier: 1

Instrument :
MSVOA_Y
ClientSampled :
COMP-3

Quant Method : Z:\voasrv\HPCHEM1\MSVOA_Y\methods\82Y062221S.M
Quant Title : SW846 8260

TIC Library : C:\DATABASE\NIST11.L
TIC Integration Parameters: LSCINT.P

No Library Search Compounds Detected

Data Path : Z:\voasrv\HPCHEM1\MSVOA_Y\Data\VY070121\
Data File : VY005319.D
Acq On : 01 Jul 2021 17:12
Operator : SY/MD
Sample : M2904-04
Misc : 5.41G/5ML/MSVOA_Y/SOIL
ALS Vial : 14 Sample Multiplier: 1

Instrument :
MSVOA_Y
ClientSampleId :
COMP-3

Quant Method : Z:\voasrv\HPCHEM1\MSVOA_Y\methods\82Y062221S.M
Quant Title : SW846 8260

TIC Library : C:\DATABASE\NIST11.L
TIC Integration Parameters: LSCINT.P

TIC Top Hit name	RT	EstConc	Units	Response	--Internal Standard--			
					#	RT	Resp	Conc
