

Data Path : Z:\voasrv\HPCHEM1\MSVOA_Y\Data\VY070623\
 Data File : VY014587.D
 Acq On : 06 Jul 2023 14:42
 Operator : KP/MD
 Sample : 03522-02
 Misc : 5.01g/5.0mL/MSVOA_Y/SOIL
 ALS Vial : 14 Sample Multiplier: 1

Instrument :
 MSVOA_Y
 ClientSampleId :
 VOC

Integration Parameters: RTEINT.P
 Integrator: RTE
 Smoothing : ON Filtering: 5
 Sampling : 1 Min Area: 3 % of largest Peak
 Start Thrs: 0.2 Max Peaks: 100
 Stop Thrs : 0 Peak Location: TOP

If leading or trailing edge < 100 prefer < Baseline drop else tangent >
 Peak separation: 5

Method : Z:\voasrv\HPCHEM1\MSVOA_Y\methods\82Y063023S.M
 Title : SW846 8260

Signal : TIC: VY014587.D\data.ms

| peak # | R.T. min | first scan | max scan | last scan | PK TY | peak height | corr. area | corr. % max. | % of total |
|--------|----------|------------|----------|-----------|-------|-------------|------------|--------------|------------|
| 1 | 4.204 | 382 | 391 | 403 | rBV3 | 4218 | 12315 | 1.19% | 0.189% |
| 2 | 4.704 | 462 | 473 | 484 | rBV2 | 19932 | 57160 | 5.54% | 0.879% |
| 3 | 6.972 | 831 | 845 | 868 | rBV | 101024 | 314238 | 30.43% | 4.835% |
| 4 | 7.710 | 956 | 966 | 972 | rBV | 162814 | 386547 | 37.43% | 5.947% |
| 5 | 7.783 | 972 | 978 | 990 | rVB | 251392 | 569750 | 55.18% | 8.766% |
| 6 | 8.137 | 1022 | 1036 | 1047 | rBV | 166968 | 379028 | 36.71% | 5.831% |
| 7 | 8.685 | 1117 | 1126 | 1139 | rBV | 388530 | 760351 | 73.63% | 11.698% |
| 8 | 10.173 | 1361 | 1370 | 1380 | rBV | 587203 | 1032604 | 100.00% | 15.887% |
| 9 | 10.575 | 1428 | 1436 | 1447 | rVB | 57061 | 105485 | 10.22% | 1.623% |
| 10 | 10.941 | 1487 | 1496 | 1507 | rBV | 117140 | 199937 | 19.36% | 3.076% |
| 11 | 11.313 | 1551 | 1557 | 1564 | rVB | 14686 | 26355 | 2.55% | 0.405% |
| 12 | 11.490 | 1578 | 1586 | 1595 | rBV | 563060 | 945025 | 91.52% | 14.539% |
| 13 | 12.483 | 1739 | 1749 | 1762 | rBV2 | 469176 | 785845 | 76.10% | 12.090% |
| 14 | 12.819 | 1797 | 1804 | 1811 | rBV | 13417 | 21728 | 2.10% | 0.334% |
| 15 | 13.422 | 1896 | 1903 | 1910 | rBV | 553533 | 856435 | 82.94% | 13.176% |
| 16 | 13.959 | 1983 | 1991 | 1996 | rBV | 9142 | 15056 | 1.46% | 0.232% |
| 17 | 15.312 | 2205 | 2213 | 2218 | rBV | 19610 | 31955 | 3.09% | 0.492% |

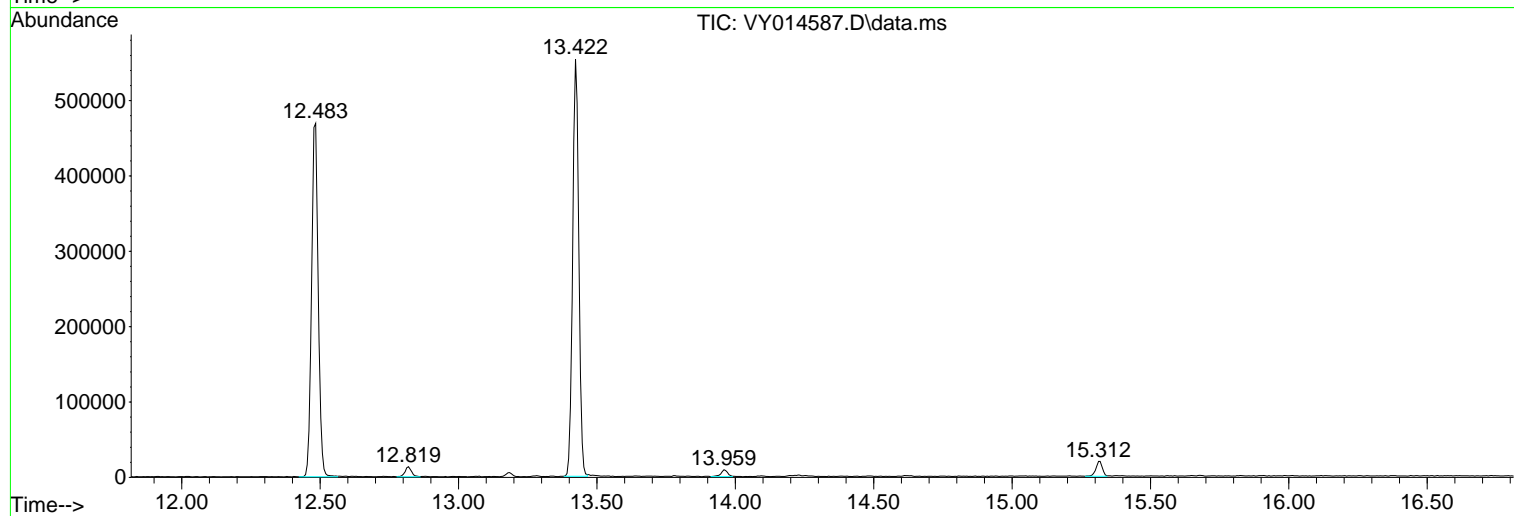
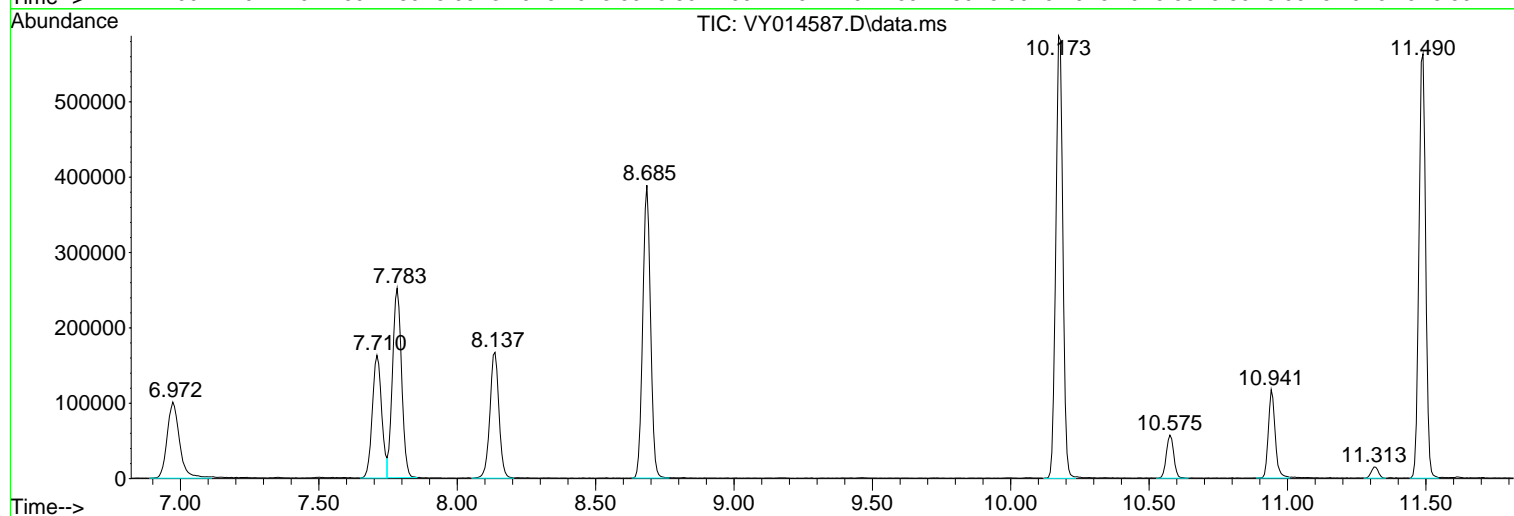
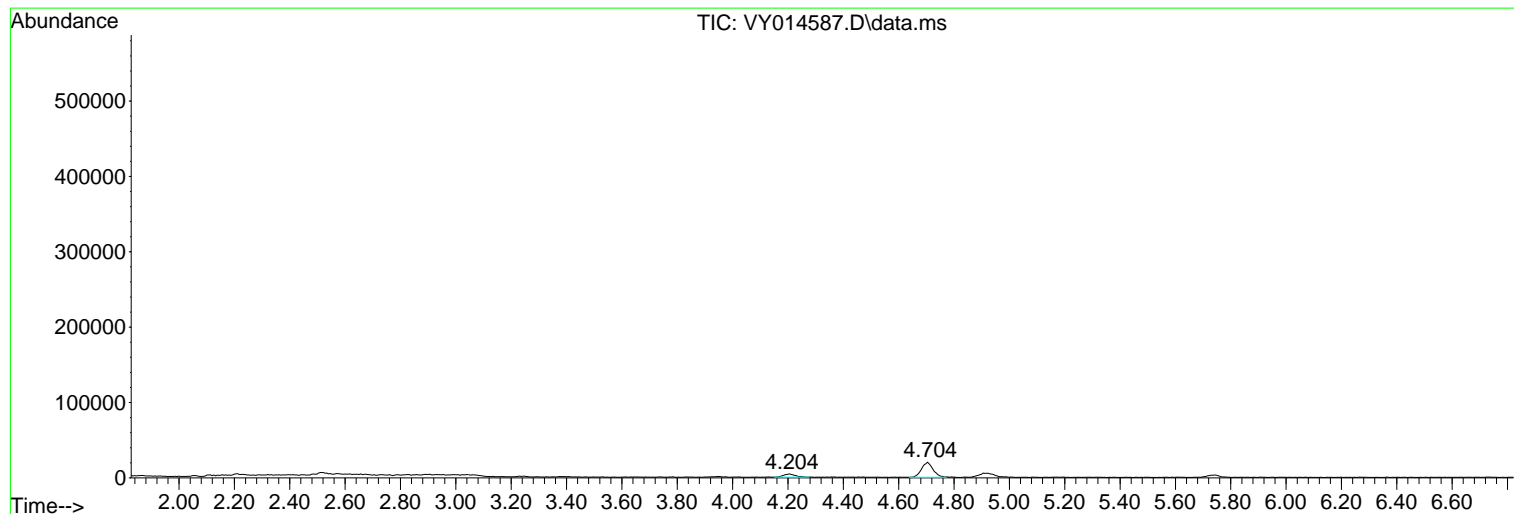
Sum of corrected areas: 6499814

Data Path : Z:\voasrv\HPCHEM1\MSVOA_Y\Data\VY070623\
Data File : VY014587.D
Acq On : 06 Jul 2023 14:42
Operator : KP/MD
Sample : 03522-02
Misc : 5.01g/5.0mL/MSVOA_Y/SOIL
ALS Vial : 14 Sample Multiplier: 1

Instrument :
MSVOA_Y
ClientSampleId :
VOC

Quant Method : Z:\voasrv\HPCHEM1\MSVOA_Y\methods\82Y063023S.M
Quant Title : SW846 8260

TIC Library : C:\Database\NIST0.L
TIC Integration Parameters: LSCINT.P



Data Path : Z:\voasrv\HPCHEM1\MSVOA_Y\Data\VY070623\
 Data File : VY014587.D
 Acq On : 06 Jul 2023 14:42
 Operator : KP/MD
 Sample : 03522-02
 Misc : 5.01g/5.0mL/MSVOA_Y/SOIL
 ALS Vial : 14 Sample Multiplier: 1

Instrument :
 MSVOA_Y
 ClientSampleId :
 VOC

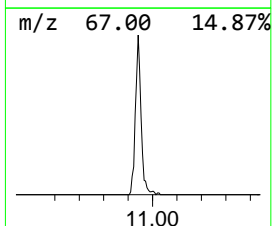
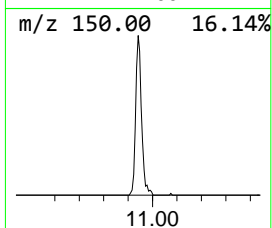
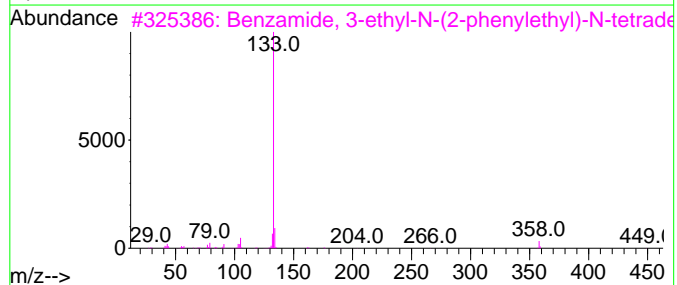
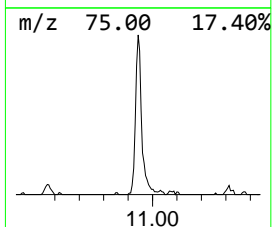
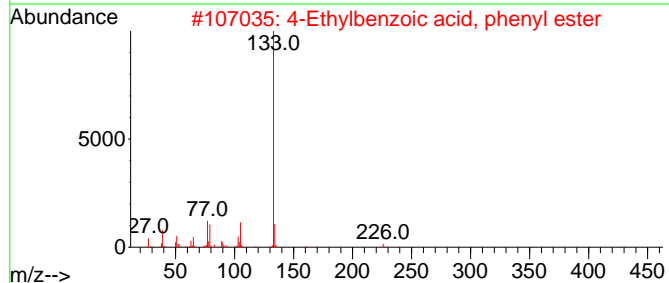
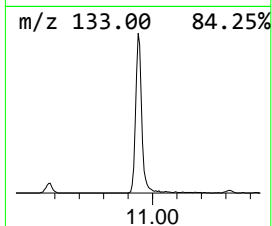
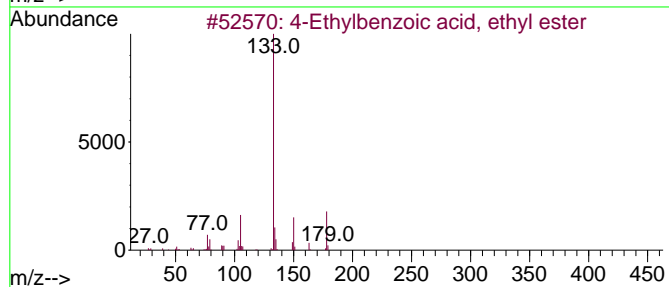
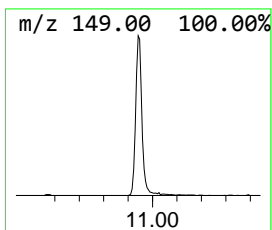
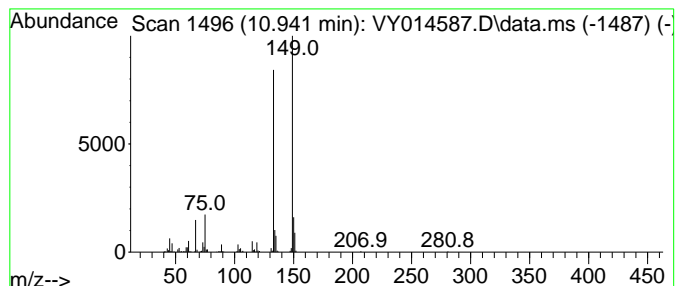
Quant Method : Z:\voasrv\HPCHEM1\MSVOA_Y\methods\82Y063023S.M
 Quant Title : SW846 8260

TIC Library : C:\Database\NIST20.L
 TIC Integration Parameters: LSCINT.P

 Peak Number 4 unknown10.941 Concentration Rank 2

| R.T. | EstConc | Area | Relative to ISTD | R.T. |
|--------|------------|--------|------------------|--------|
| 10.941 | 10.58 ug/l | 199937 | Chlorobenzene-d5 | 11.490 |

| Hit# | of | 5 | Tentative ID | MW | MolForm | CAS# | Qual |
|------|----|---|-------------------------------------|-----|-----------|--------------|------|
| 1 | | | 4-Ethylbenzoic acid, ethyl ester | 178 | C11H14O2 | 036207-13-3 | 43 |
| 2 | | | 4-Ethylbenzoic acid, phenyl ester | 226 | C15H14O2 | 118388-89-9 | 25 |
| 3 | | | Benzamide, 3-ethyl-N-(2-phenylet... | 449 | C31H47NO | 1000451-43-2 | 25 |
| 4 | | | 4-Ethylbenzoic acid, 3,5-dimethy... | 254 | C17H18O2 | 1000307-12-3 | 25 |
| 5 | | | 5-(2-Bromoethyl)-2,3-dihydro-1-b... | 226 | C10H11BrO | 127264-14-6 | 25 |



Data Path : Z:\voasrv\HPCHEM1\MSVOA_Y\Data\VY070623\
Data File : VY014587.D
Acq On : 06 Jul 2023 14:42
Operator : KP/MD
Sample : 03522-02
Misc : 5.01g/5.0mL/MSVOA_Y/SOIL
ALS Vial : 14 Sample Multiplier: 1

Instrument :
MSVOA_Y
ClientSampleId :
VOC

Quant Method : Z:\voasrv\HPCHEM1\MSVOA_Y\methods\82Y063023S.M
Quant Title : SW846 8260

TIC Library : C:\Database\NIST20.L
TIC Integration Parameters: LSCINT.P

| TIC Top Hit name | RT | EstConc | Units | Response | --Internal Standard-- | | | |
|------------------|--------|---------|-------|----------|-----------------------|--------|--------|------|
| | | | | | # | RT | Resp | Conc |
| unknown | 10.941 | 10.6 | ug/l | 199937 | 3 | 11.490 | 945025 | 50.0 |